



Pioneer Energy Services

# Microresistivity Log

15-193-20,887-00-00

API No.

Company Brito Oil Company, Inc.

Well Johnson-Robben Unit #1-2

Field Wildcat

County Thomas State Kansas

Location 1,950' FNL & 880' FEL (SE NW SE NE)

Sec: 2 Twp: 10S Rge: 32W

Permanent Datum Ground Level Elevation 3075

Log Measured From Kelly Bushing 5 Ft. Above Perm. Datum

Drilling Measured From Kelly Bushing

Other Services  
CNL/CDL  
DIL  
Elevation  
K.B. 3080  
D.F. 3075  
G.L. 3075

Date	5/18/2013
Run Number	Two
Depth Driller	4760
Depth Logger	4760
Bottom Logged Interval	4759
Top Log Interval	3700
Casing Driller	8.625 @ 258
Casing Logger	257
Bit Size	7.875
Type Fluid in Hole	Chemical
Salinity, ppm CL	2600
Density / Viscosity	9.2 51
pH / Fluid Loss	10.5 7.2
Source of Sample	Flowline
Rm @ Meas. Temp	.65 @ 76
Rmf @ Meas. Temp	.49 @ 76
Rmc @ Meas. Temp	.88 @ 76
Source of Rmf / Rmc	Charts
Rm @ BHT	.40 @ 124
Operating Rig Time	4 Hours
Max Rec. Temp. F	124
Equipment Number	108
Location	Hays
Recorded By	J. Long
Witnessed By	Derek Patterson

<<< Fold Here >>>

All interpretations are opinions based on inferences from electrical or other measurements and we cannot and do not guarantee the accuracy or correctness of any interpretation, and we shall not, except in the case of gross or willful negligence on our part, be liable or responsible for any loss, costs, damages, or expenses incurred or sustained by anyone resulting from any interpretation made by any of our officers, agents or employees. These interpretations are also subject to our general terms and conditions set out in our current Price Schedule.

### Comments

Thank you for using Pioneer Energy Services  
www.pioneerres.com  
785 625 3858

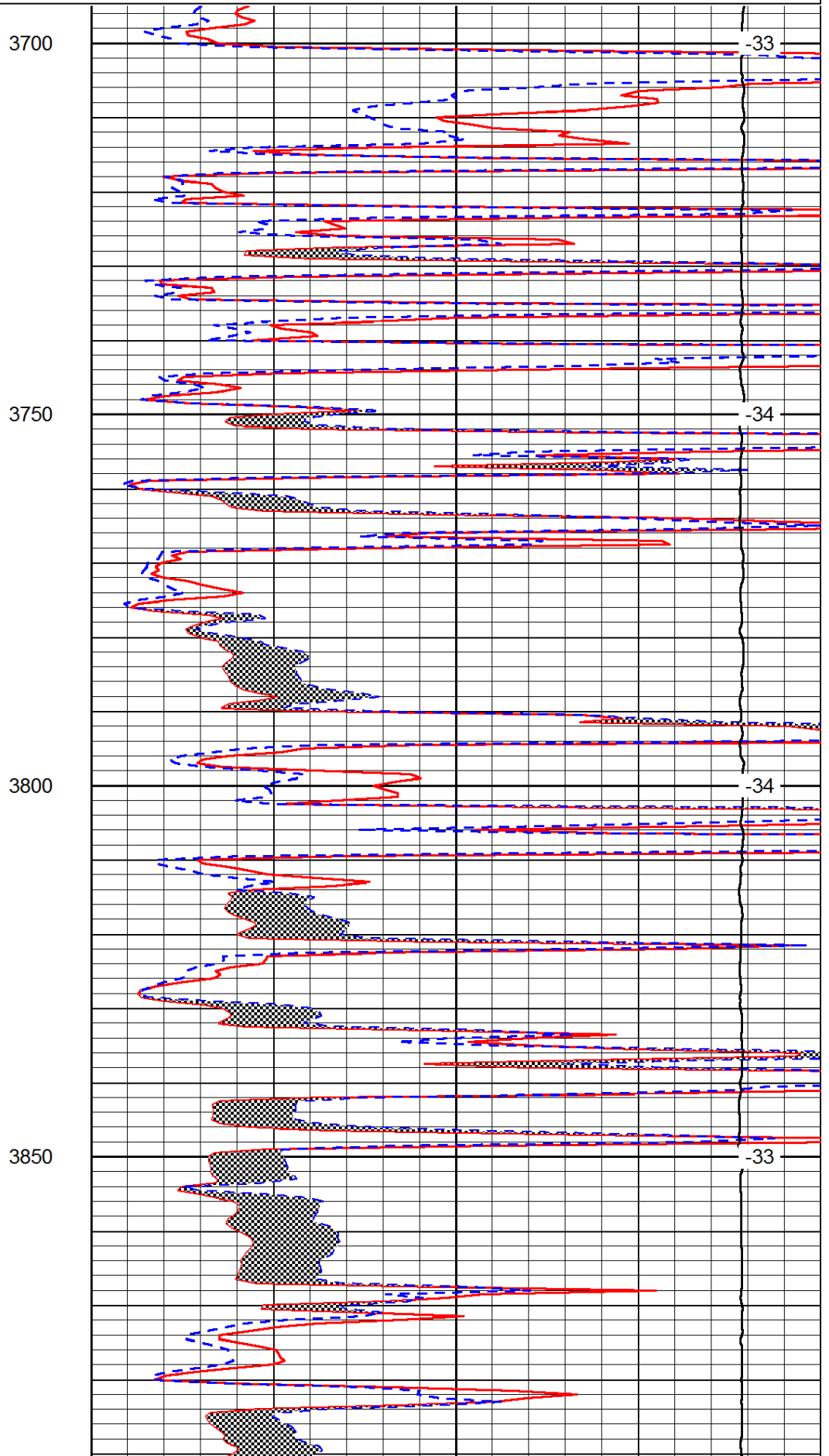
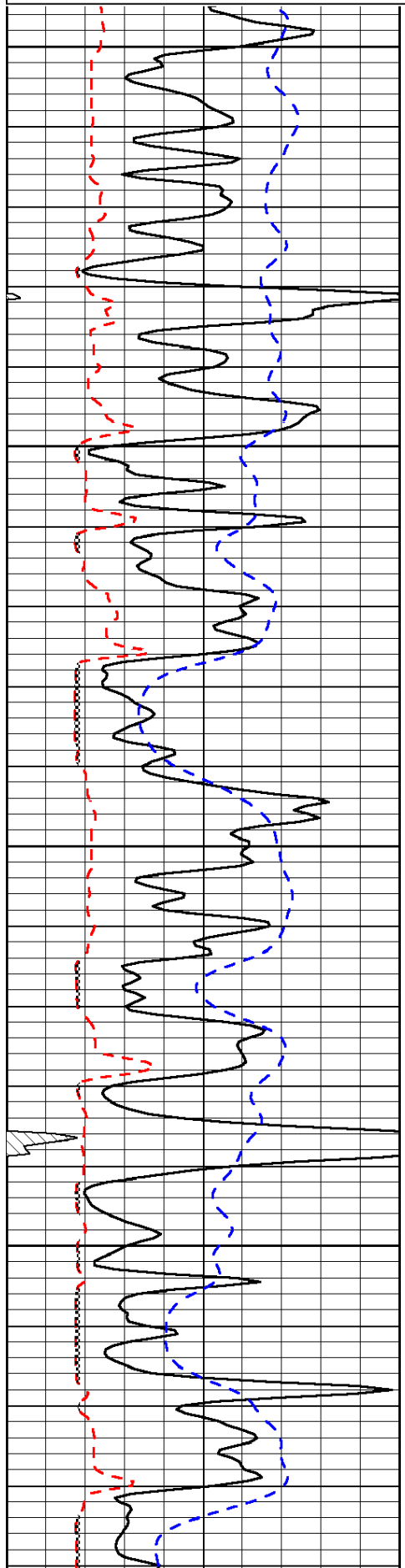
Oakley (Rexford Exit) 1 North to F Road, 1 East to 30 Road, 1/2 North, West Into

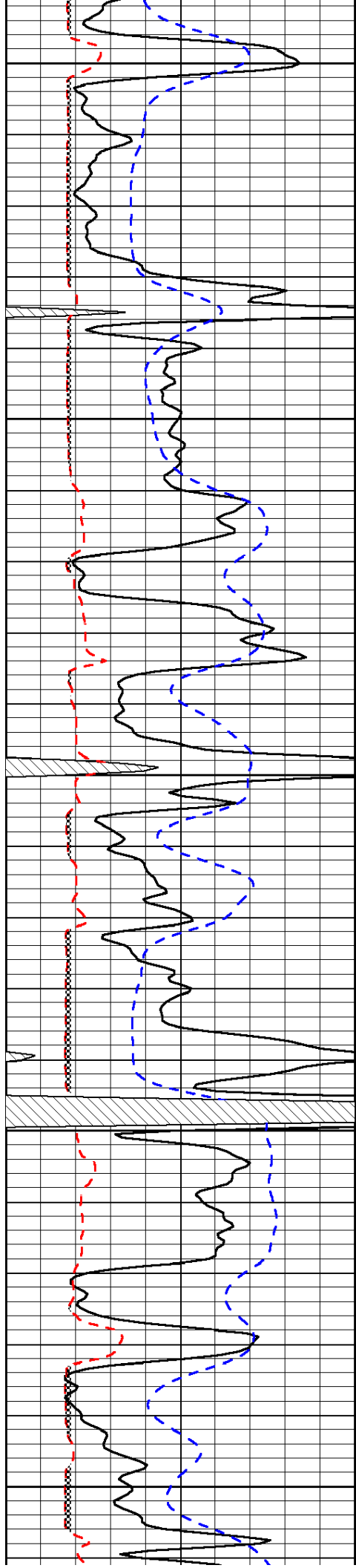
Database File: c:\warrior\data\brito\_johnson-robben unit #1-2\brito\_johnson-robben\_1-2hd.db  
 Dataset Pathname: dil/britstck  
 Presentation Format: micro  
 Dataset Creation: Sat May 18 23:04:03 2013  
 Charted by: Depth in Feet scaled 1:240

0	Gamma Ray	150
6	Micro Log Caliper (GAPI)	16
-200	SP (mV)	0

0	Micro Inverse 1 X 1	40
0	Micro Normal 2"	40
15000	Line Weight	0

LSPD





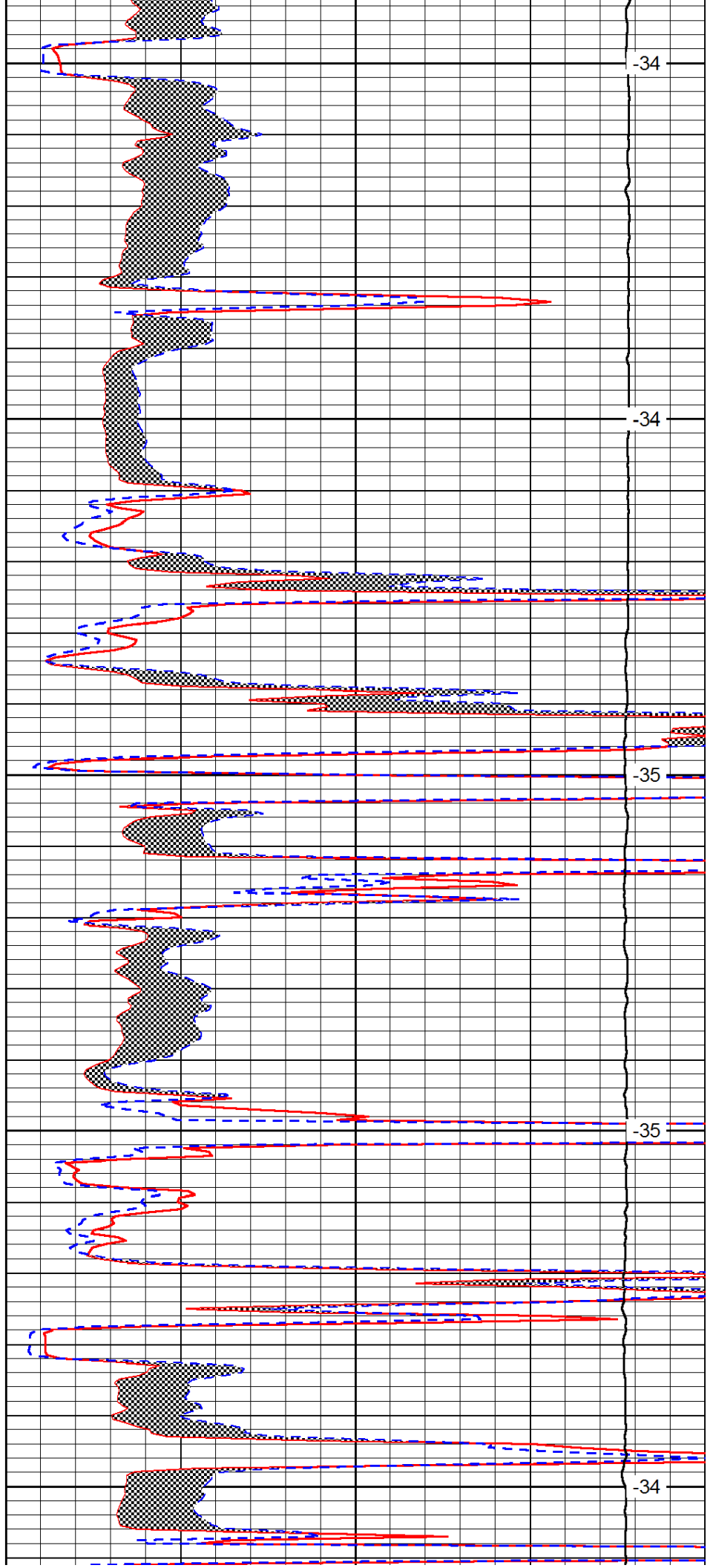
3900

3950

4000

4050

4100



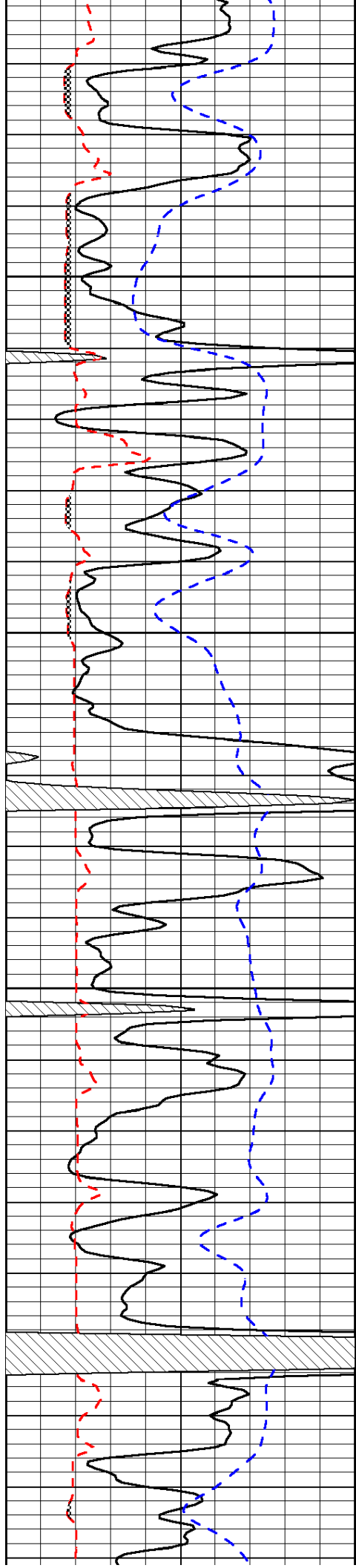
-34

-34

-35

-35

-34

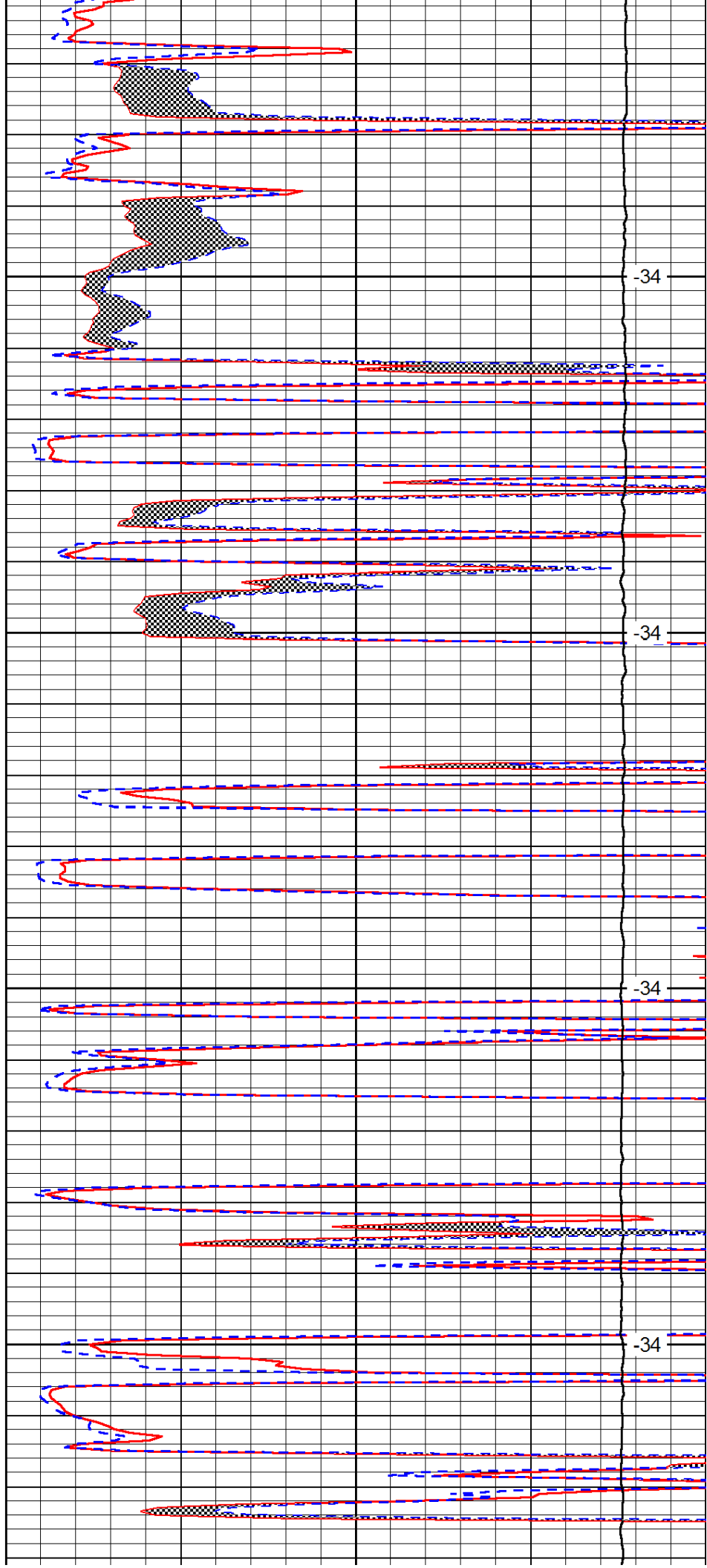


4150

4200

4250

4300

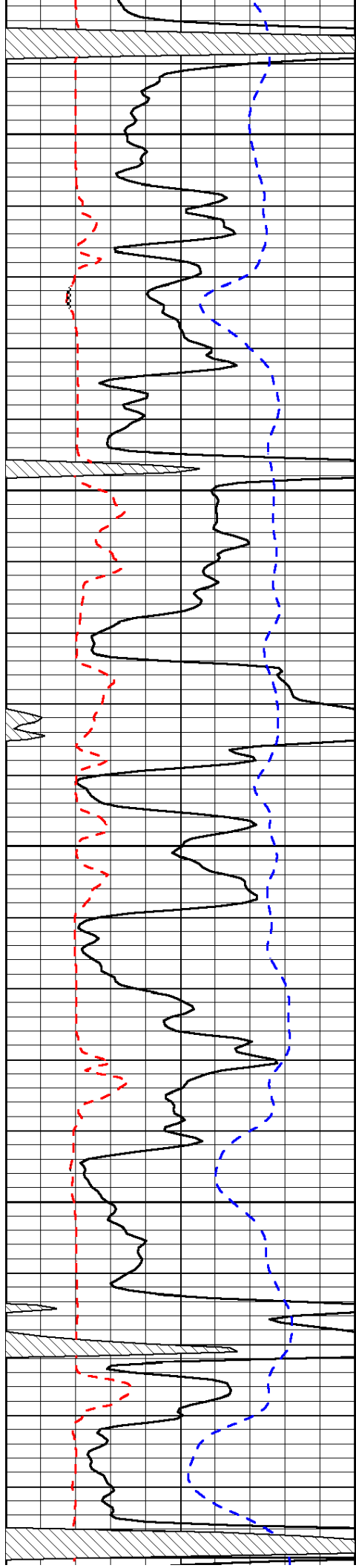


-34

-34

-34

-34



4350

-34

4400

-34

4450

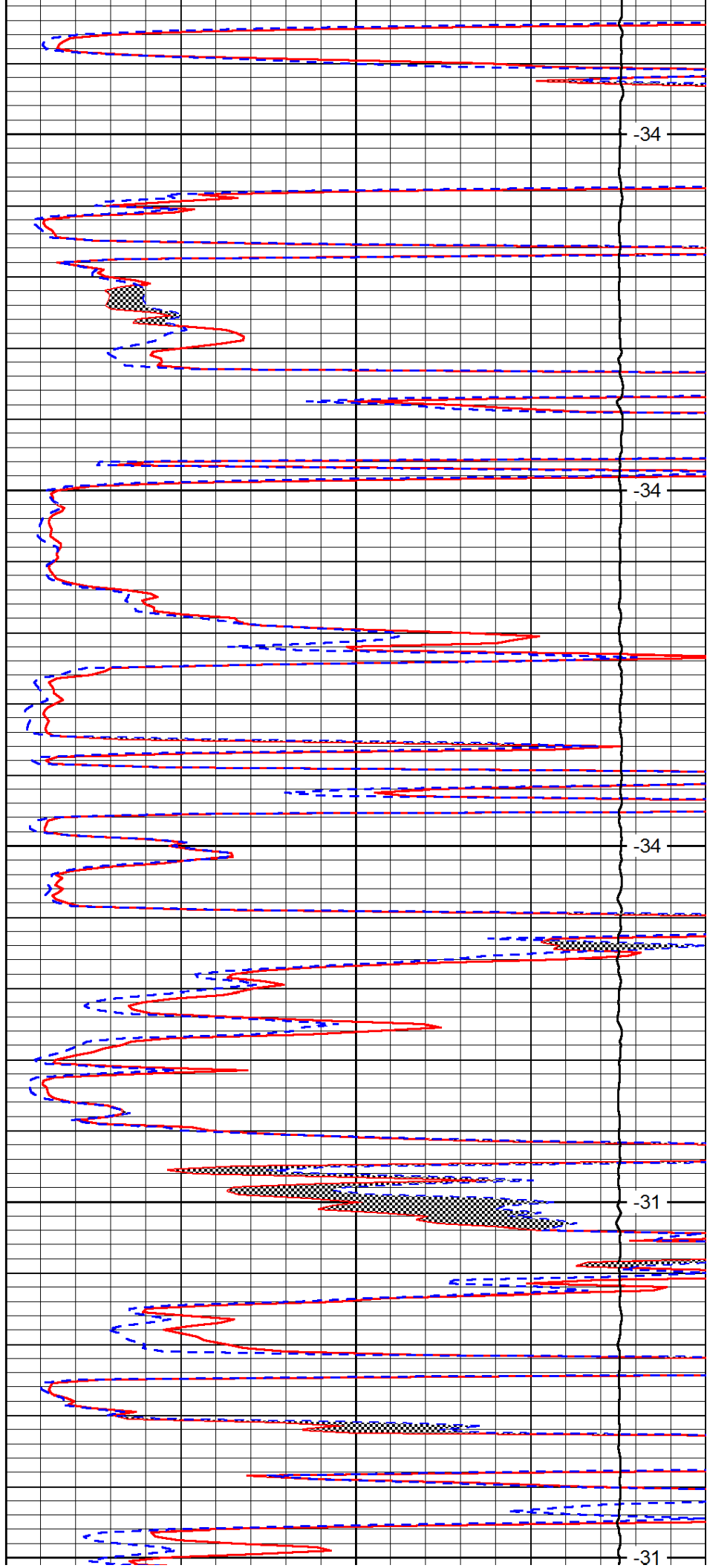
-34

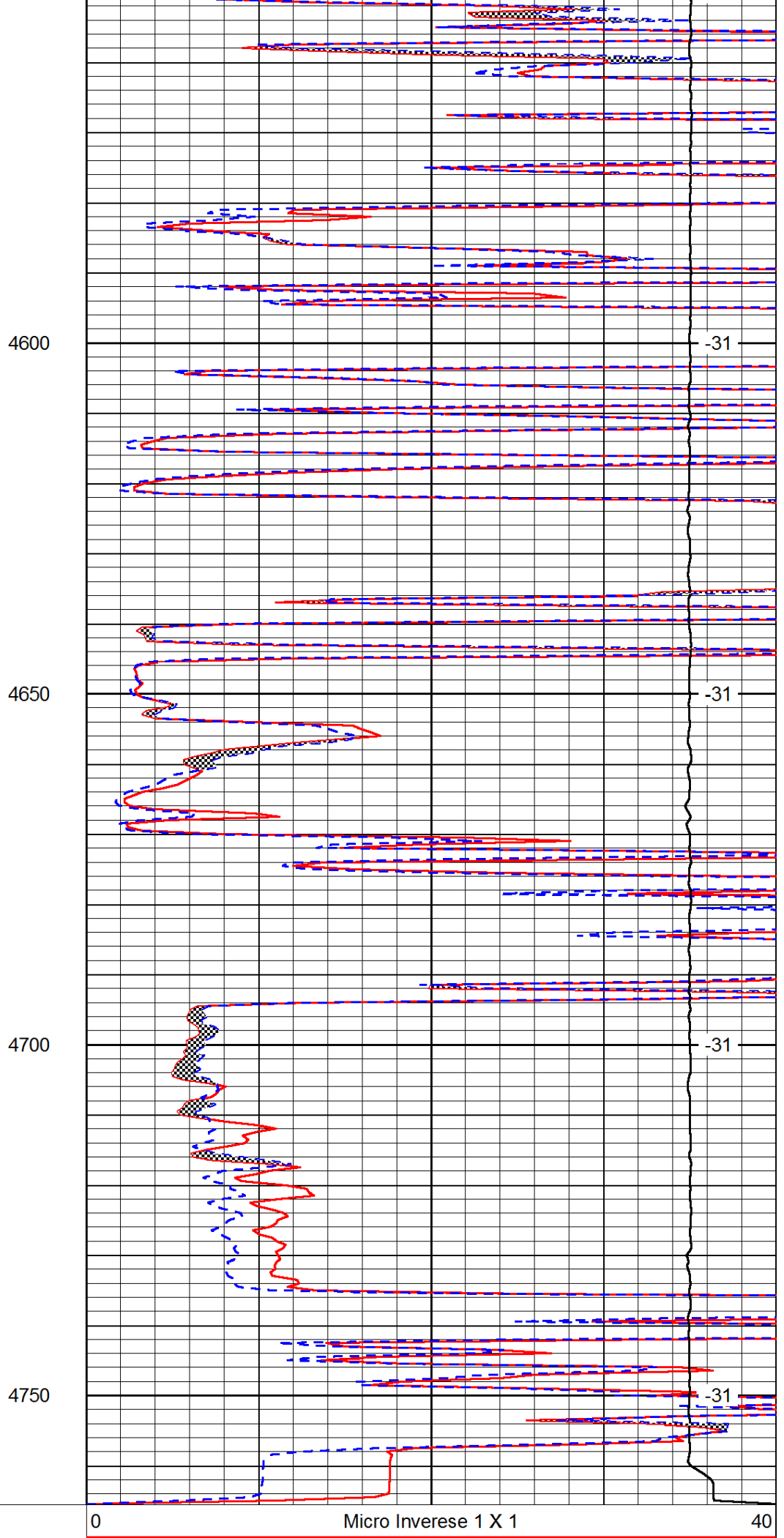
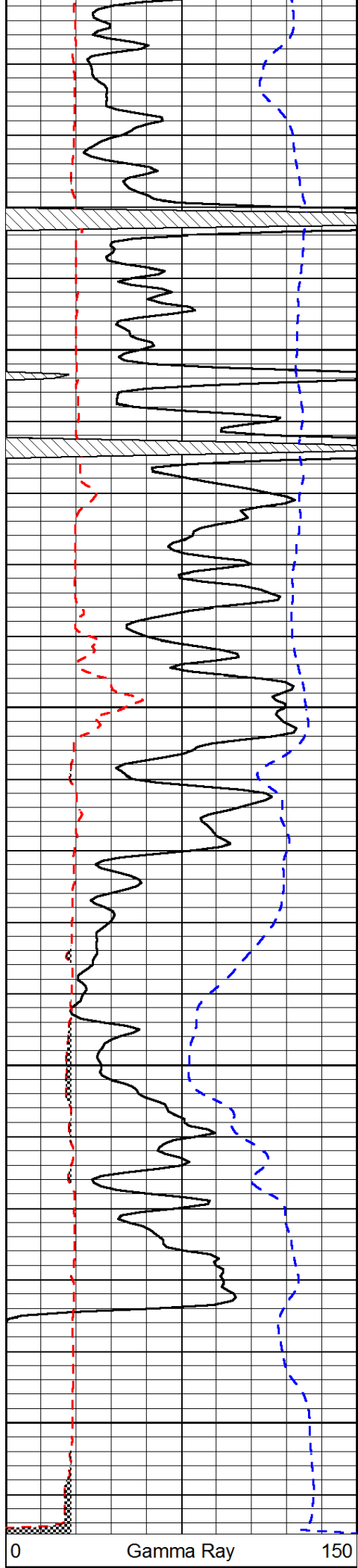
4500

-31

4550

-31





6	Micro Log Caliper (GAPI)	16
-200	SP (mV)	0

0	Micro Normal 2"	40
15000	Line Weight	0

LSPD
------