

Company: OMIMEX PETROLEUM INC.

Well: CLARK 6-21

Field: FRUIT NORTH

County: KIOWA State: KANSAS

BOREHOLE PROFILE

IHV / ICV

GAMMA RAY

County: KIOWA
 Field: FRUIT NORTH
 Location:
 Well: CLARK 6-21
 Company: OMIMEX PETROLEUM INC.

Location:		SHL: 2278' FNL AND 2248' FWL	Elev.:	K.B. 2106.10 ft
Permanent Datum:	Ground Level		G.L. 2095.10 ft	
Log Measured From:	Kelly Bushing		D.F. 2104.10 ft	
Drilling Measured From:	Kelly Bushing			
API Serial No. 15-097-21812	Section: 21	Township: 27	Range: 16	

Logging Date	30-Oct-2014
Run Number	ONE
Depth Driller	5022.00 ft
Schlumberger Depth	5022.00 ft
Bottom Log Interval	5022.00 ft
Top Log Interval	608.00 ft
Casing Driller Size @ Depth	8.625 in @ 610.00 ft
Casing Schlumberger	608 ft
Bit Size	7.875 in
Type Fluid In Hole	Fresh WBM
Density	9.4 lbm/gal
Fluid Loss	10 cm3
PH	9
Source of Sample	Active Tank
RM @ Meas Temp	0.5 ohm.m @ 75 degF
RMF @ Meas Temp	0.43 ohm.m @ 75 degF
RMC @ Meas Temp	0.58 ohm.m @ 68 degF
Source RMF	Calculated
RM @ BHT	0.33 @ 118
RMF @ BHT	0.28 @ 118
Max Recorded Temperatures	118
Circulation Stopped	30-Oct-2014 10:00:00
Logger on Bottom	30-Oct-2014 14:20:39
Unit Number	2367
Recorded By	DERYK REQUE
Witnessed By	JARED LOUP

Disclaimer

THE USE OF AND RELIANCE UPON THIS RECORDED-DATA BY THE HEREIN NAMED COMPANY (AND ANY OF ITS AFFILIATES, PARTNERS, REPRESENTATIVES, AGENTS, CONSULTANTS AND EMPLOYEES) IS SUBJECT TO THE TERMS AND CONDITIONS AGREED UPON BETWEEN SCHLUMBERGER AND THE COMPANY, INCLUDING: (a) RESTRICTIONS ON USE OF THE RECORDED-DATA; (b) DISCLAIMERS AND WAIVERS OF WARRANTIES AND REPRESENTATIONS REGARDING COMPANY'S USE AND RELIANCE UPON THE RECORDED-DATA; AND (c) CUSTOMER'S FULL AND SOLE RESPONSIBILITY FOR ANY INFERENCE DRAWN OR DECISION MADE IN CONNECTION WITH THE USE OF THIS RECORDED-DATA.

Contents

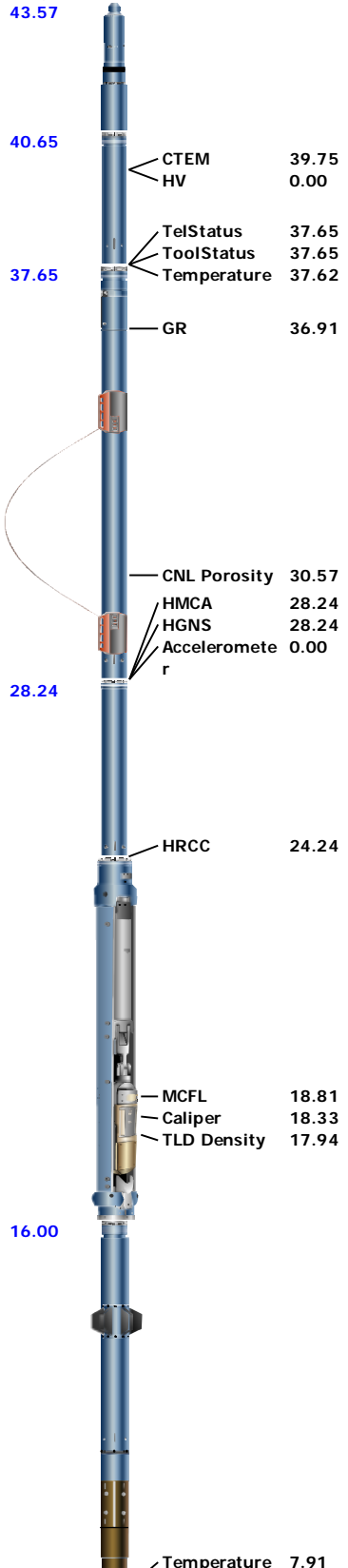
1. Header
2. Disclaimer
3. Contents
4. Remarks and Equipment Summary
5. Depth Summary
6. ONE Caliper Log 2" = 100'
 - 6.1 Integration Summary
 - 6.2 Composite Summary
 - 6.3 Log (Skinny Caliper 2in_Elk City)
 - 6.4 Parameter Listing
7. Tail

Remarks and Equipment Summary

ONE: Toolstring

ONE: Remarks

Equip name	Length	MP name	Offset	
LEH-QT LEH-QT	43.57			Thanks for choosing Schlumberger of Elk City, OK - - (580) 225-4300 - - Your crew today was Deryk, Wayne and Chase.
				All logs are computed on a Limestone matrix. MDEN =- 2.71 g/cc
DTC-H ECH-KC DTC-H	40.65	CTEM HV	39.75 0.00	Data is presented using standard Elk City presentations.
		TelStatus ToolStatus Temperature	37.65 37.65 37.62	A mud sample was obtained. Rm was measured to be 0.55 at 75°F. Rmc and Rmf were calculated.
HGNS-H HGNH NSR-F:5010 NPV-N HGNS-H HMCA-H HACCZ-H:4166	37.65	GR	36.91	Main pass was pulled from TD to CSG. Client requested High Res pass from TD to 4000'.
				Tool response is adversely affected by washout and borehole rugosity.
				SP anomaly is observed on main pass. Downlog SP presented per client request.
		CNL Porosity HMCA HGNS Acceleromete r	30.57 28.24 28.24 0.00	
HDRS-H ECH-MEB HRCC-H HRMS-H Short Spacing GSR-J:5350 GPV-Q HRGD-H:3832 Backscatter Long Spacing	28.24	HRCC	24.24	
		MCFL Caliper TLD Density	18.81 18.33 17.94	
AIT-M:154 AMIS:154 AMRM	16.00			
		Temperature Power Supply Induction	7.91 7.91 7.91	





SP 0.08
 Mud Resistivity 0.00
 Head Tension
 TOOL_ZERO

Lengths are in ft
 Maximum Outer Diameter = 9.000 in
 Line: Sensor Location, Value: Gating Offset
 All measurements are relative to TOOL_ZERO

Depth Summary

ONE

Depth Measuring Device

Type IDW-JA
 Serial Number 5997
 Calibration Date 15-MAY-2014
 Calibrator Serial Number 33
 Calibration Cable Type 7-46 PXS
 Wheel Correction 1 -5
 Wheel Correction 2 -2

Tension Device

Type CMTD-B/A
 Serial Number 2852
 Calibration Date 20-AUG-2014
 Calibrator Serial Number 1018
 Number of Calibration Points 10
 Calibration Root Mean Square Error 15
 Calibration Peak Error 29

Logging Cable

Type 7-46P-XS
 Serial Number U712049
 Length 18250.00 ft
 Conveyance Type Wireline
 Rig Type LAND, DOUBLE, KELLY

ONE:Depth Control Parameters

Log Sequence First Log In the Well
 Rig Up Length At Surface
 Rig Up Length At Bottom
 Rig Up Length Correction
 Stretch Correction
 Tool Zero Check At Surface

Depth Control Remarks

ONE

Caliper Log 2" = 100'

Integration Summary

Output Channel(s)	Output Description	Input Parameter	Output Value	Unit
ICV	Integrated Cement Volume	GCSE_UP_PASS, FCD	1378.79	ft3
IHV	Integrated Hole Volume	GCSE_UP_PASS	2108.94	ft3

Pass Summary

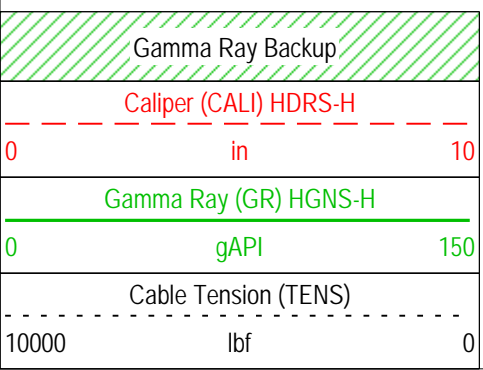
Run Name	Pass Objective	Direction	Top	Bottom	Start	Stop	DSC Mode	Depth Shift	Include Parallel Data
ONE	Main[3]:Up	Up	202.45 ft	5035.51 ft	30-Oct-2014 3:59:51 PM	30-Oct-2014 5:21:39 PM	ON	3.24 ft	No

All depths are referenced to toolstring zero

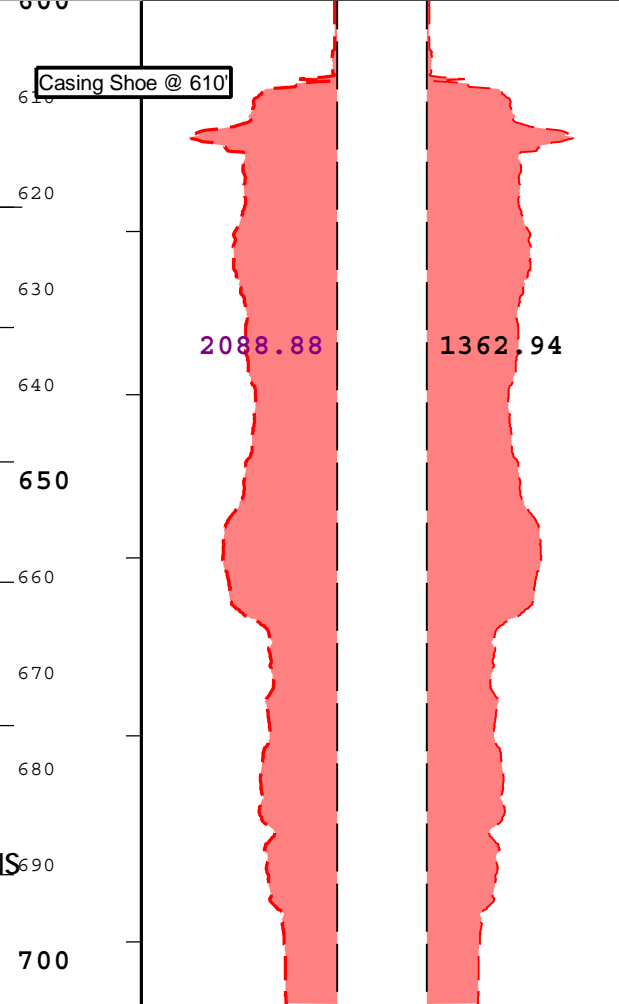
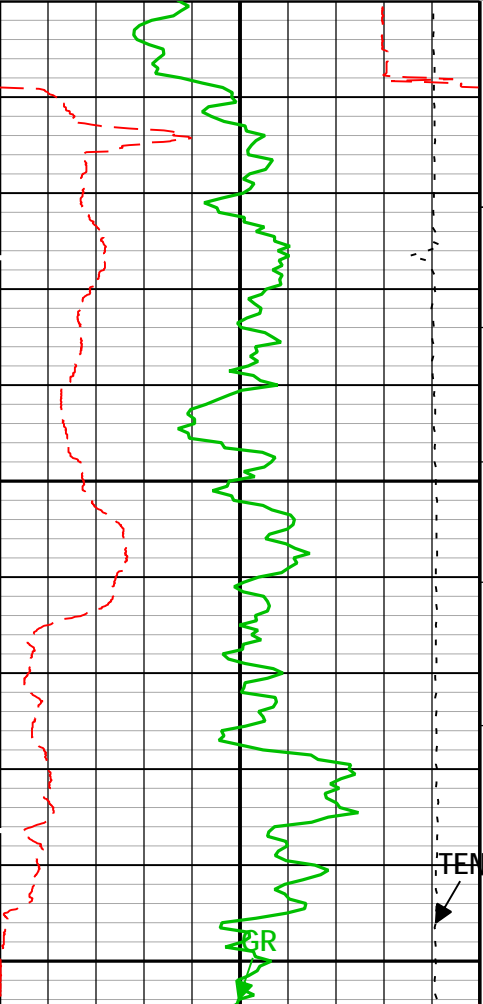
Log	Company: OMIMEX PETROLEUM INC. Well: CLARK 6-21
	ONE: Main[3]:Up:S004

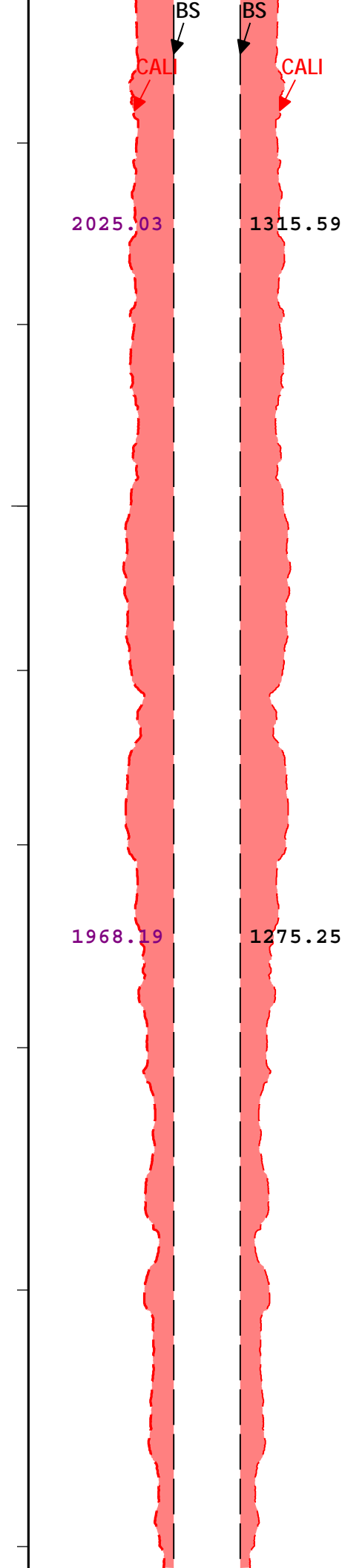
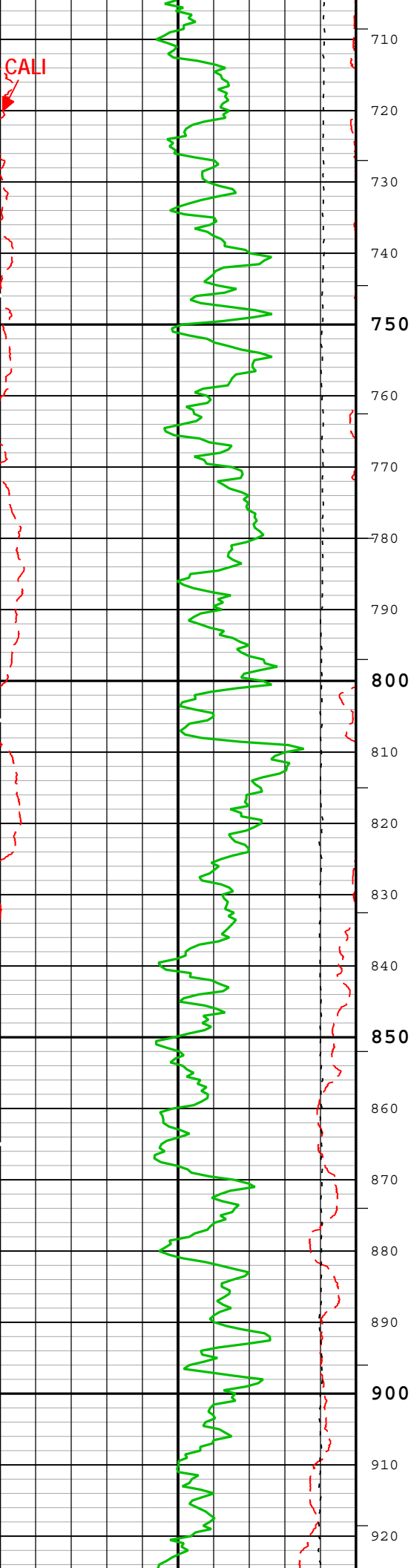
Description: HGNS standard resolution porosities for Platform Express Format: Log (Skinny Caliper 2in_Elk City) Index Scale: 5 in per 100 ft Index Unit: ft
 Index Type: Measured Depth Creation Date: 30-Oct-2014 17:49:30

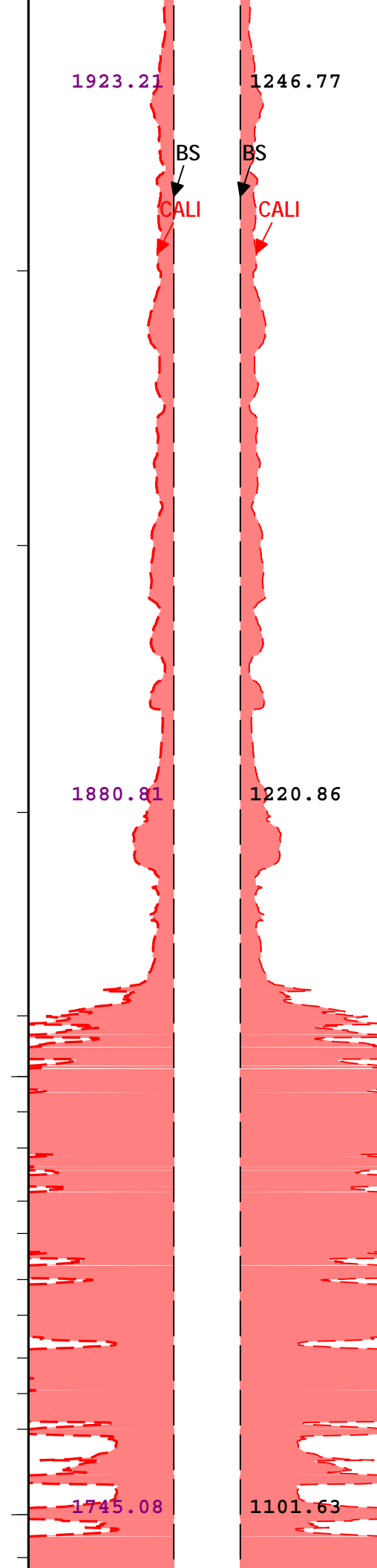
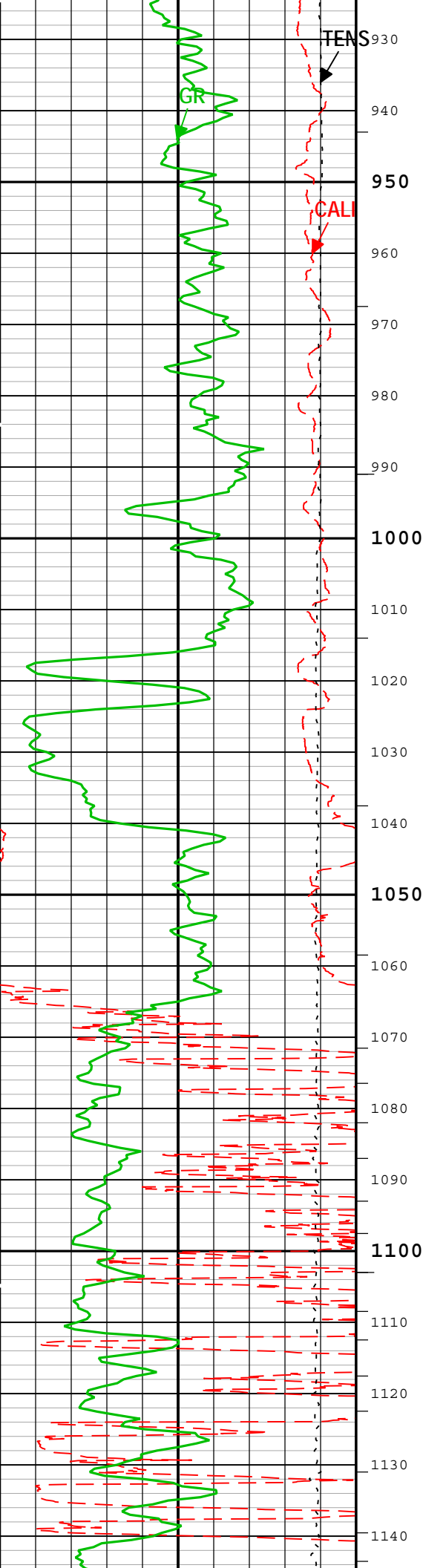
- | IHV - Integrated Hole Volume every 100.00 (ft3)
- TIME_1900 - Time Marked every 60.00 (s)
- | IHV - Integrated Hole Volume every 10.00 (ft3)
- | ICV - Integrated Cement Volume every 10.00 (ft3)
- | ICV - Integrated Cement Volume every 100.00 (ft3)

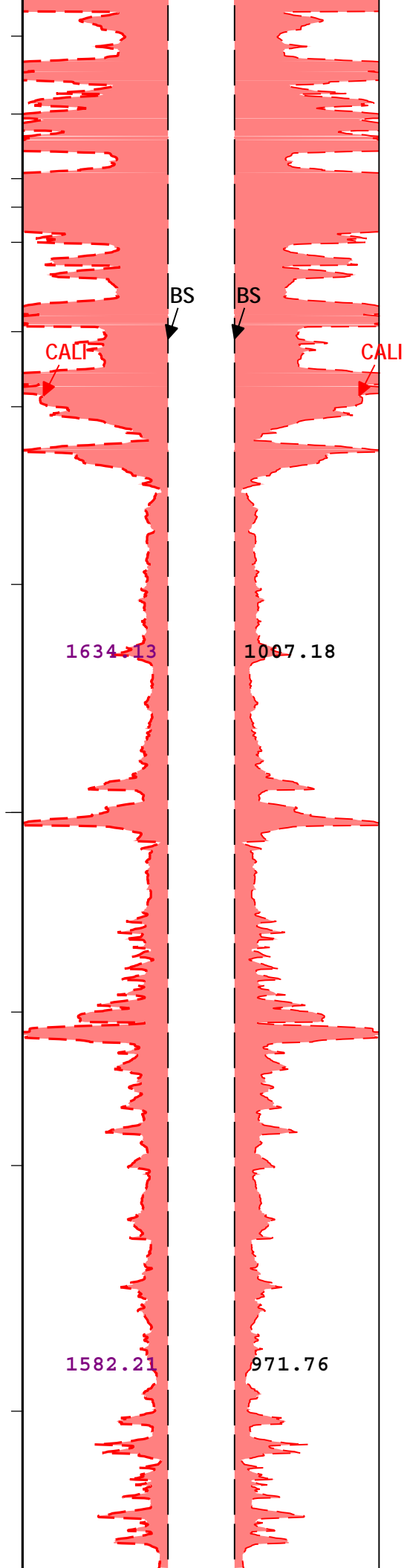
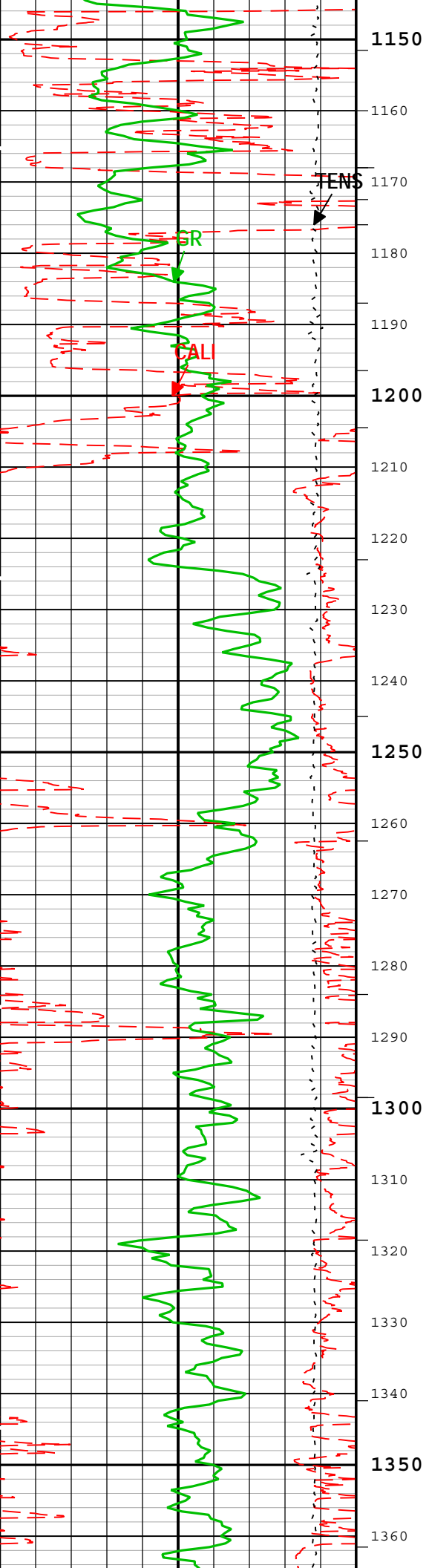


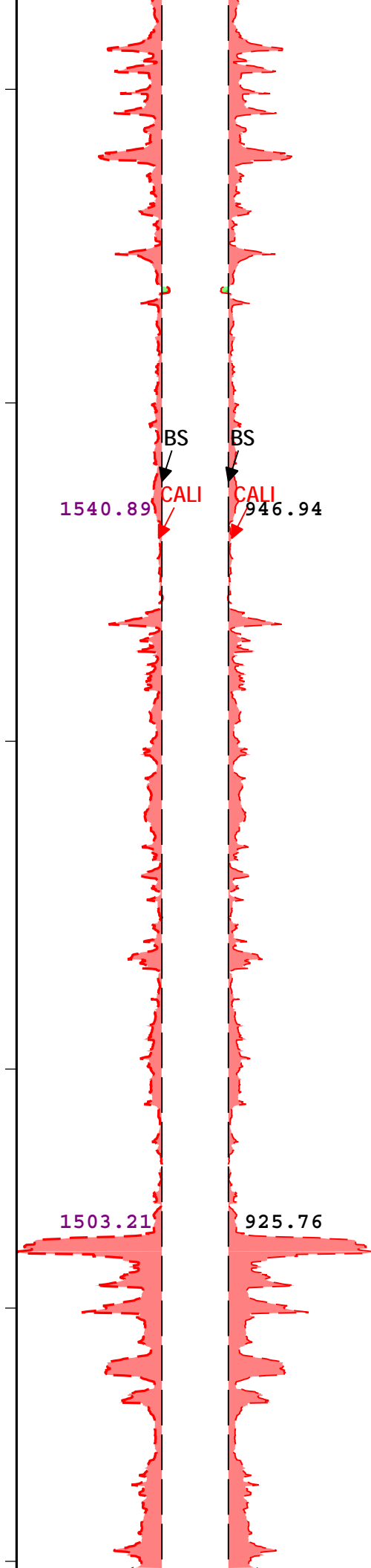
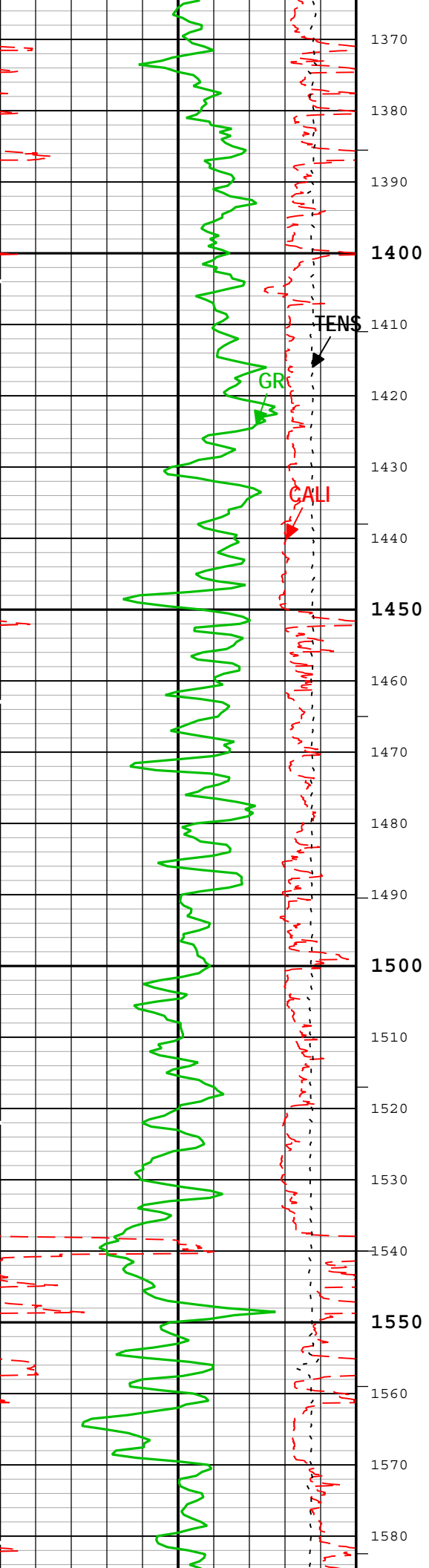
Washout		Washout	
Mudcake		Mudcake	
Caliper (CALI) HDRS-H		Caliper (CALI) HDRS-H	
16 in	6 6	16 in	6 6
Bit Size (BS)		Bit Size (BS)	
16 in	6 6	16 in	6 6
Integrated Hole Volume (IHV) ft3		Integrated Cement Volume (ICV) ft3	

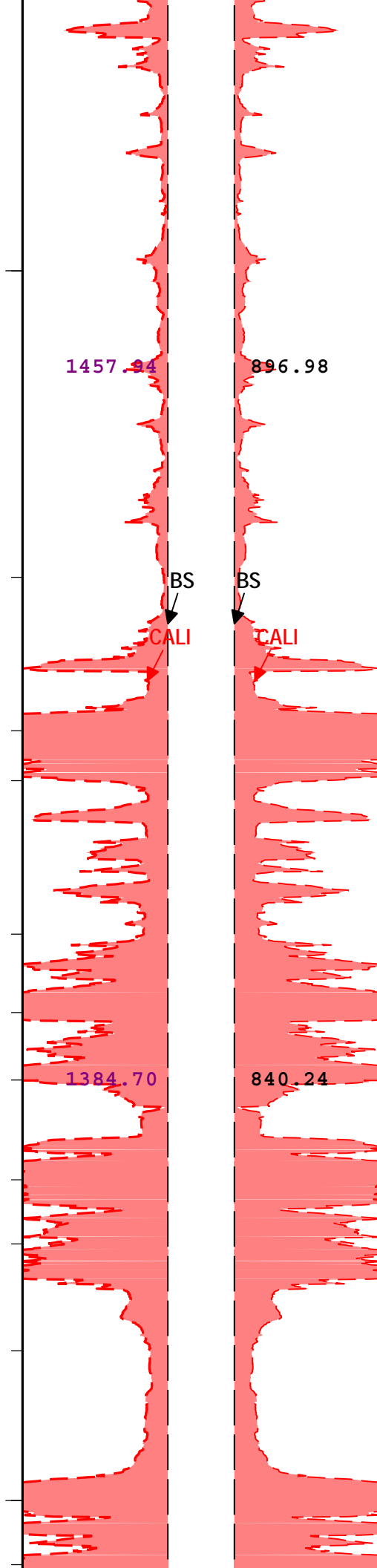
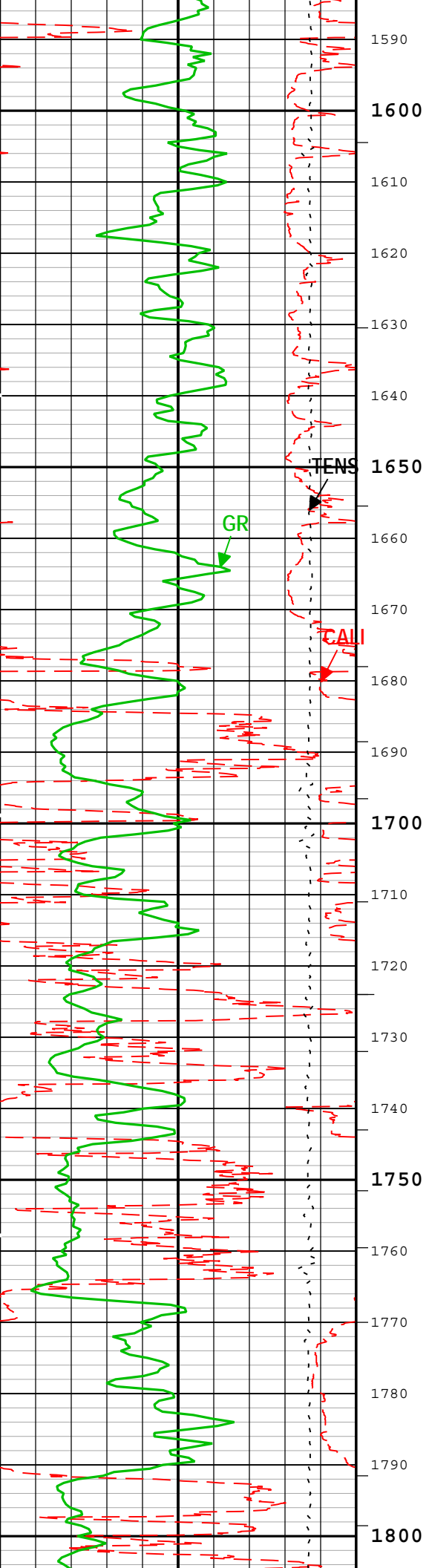


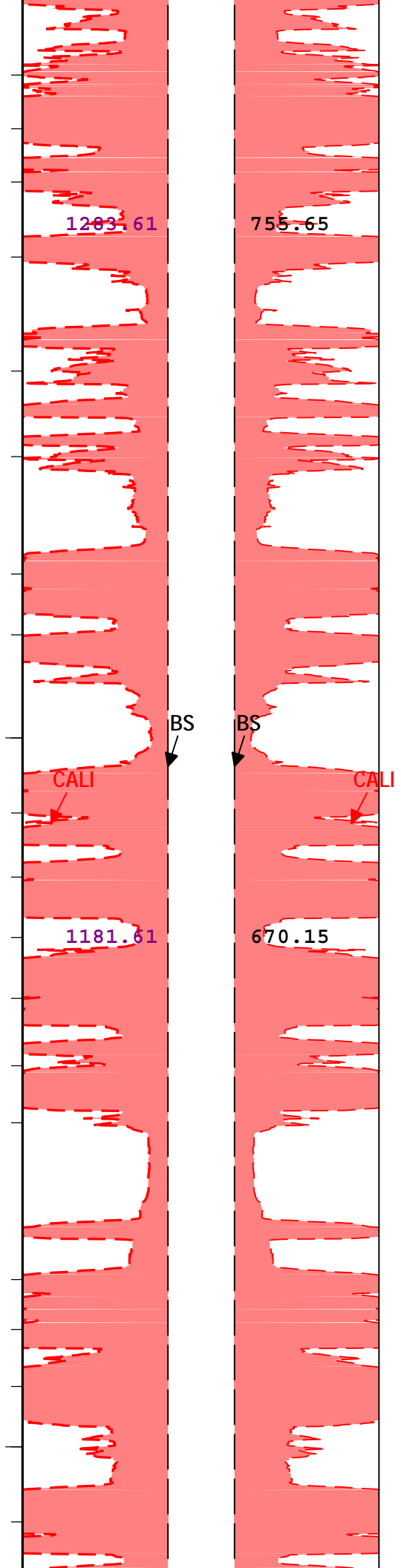
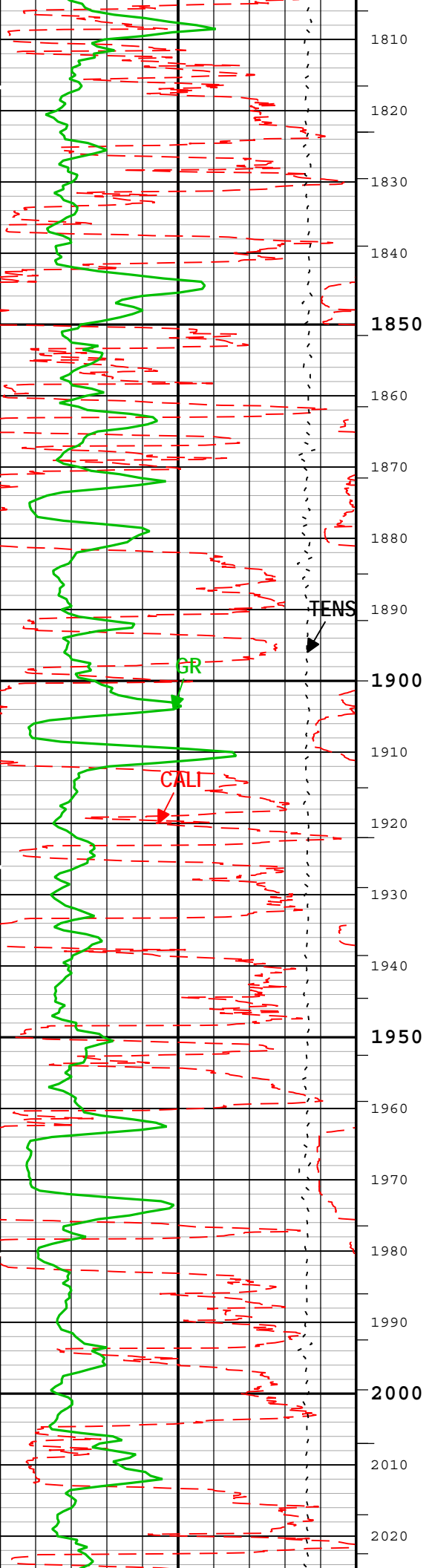


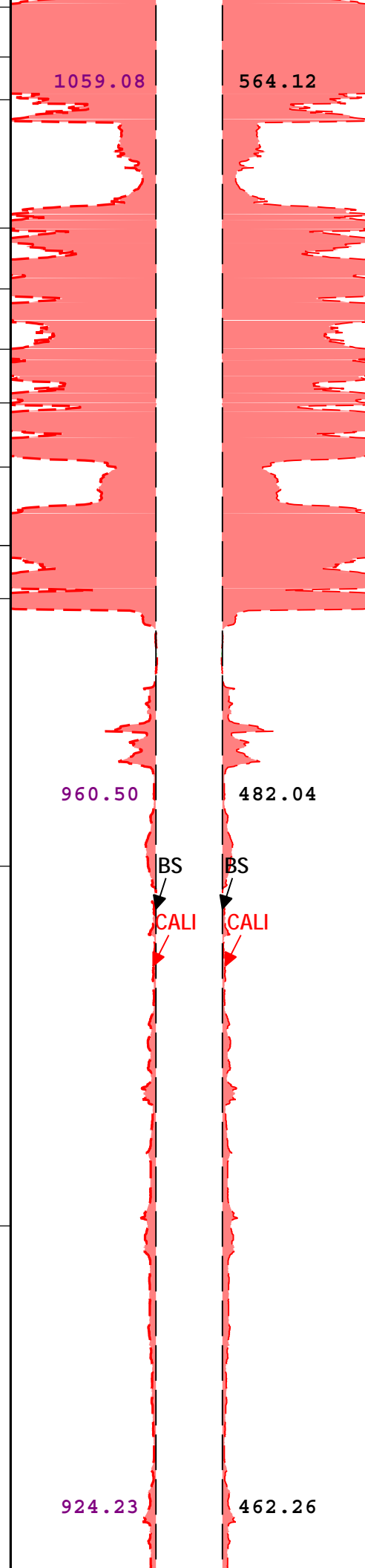
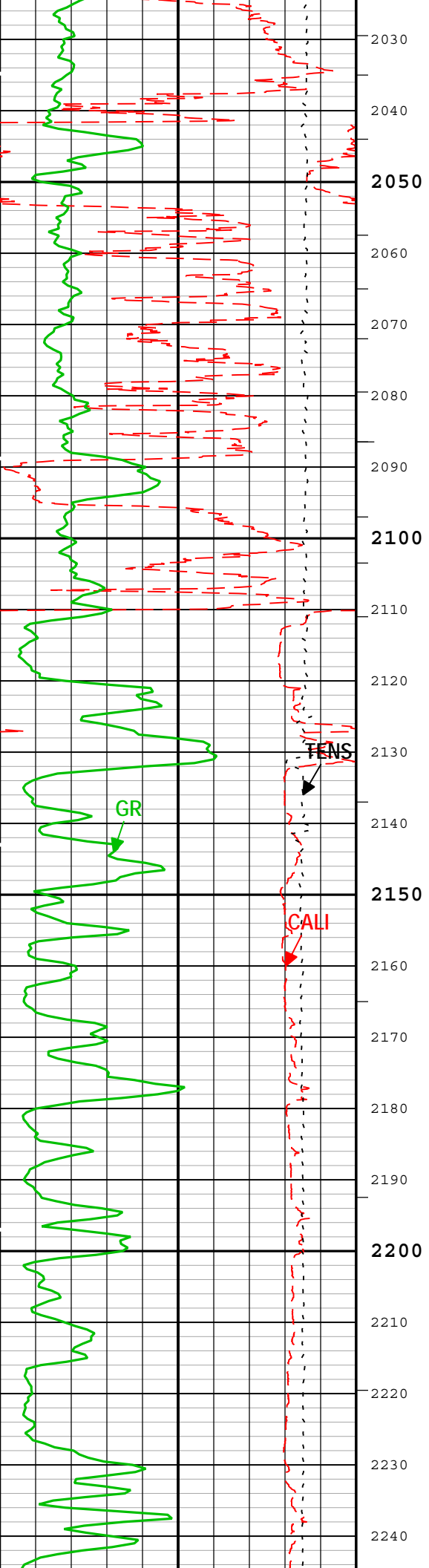


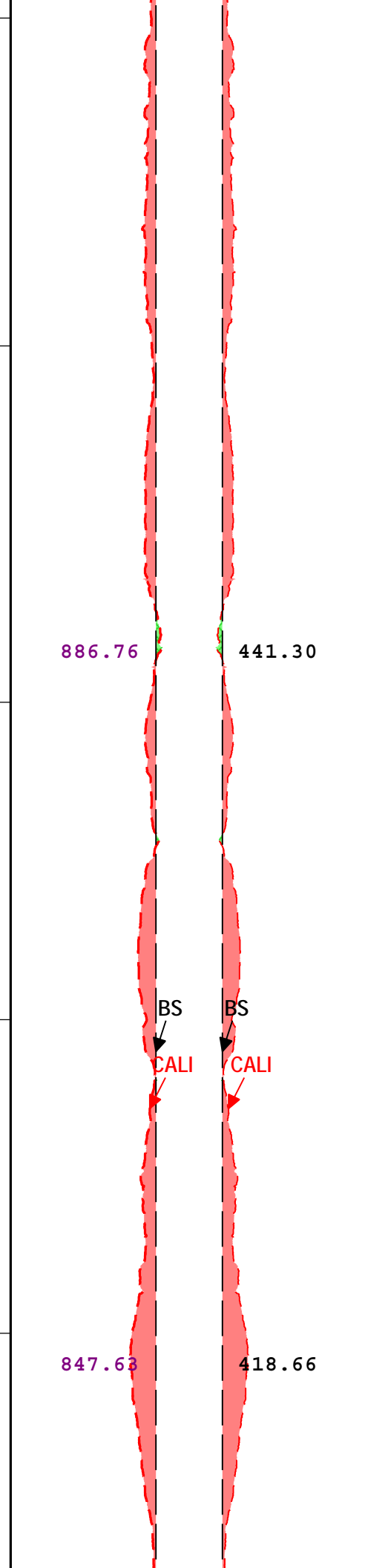
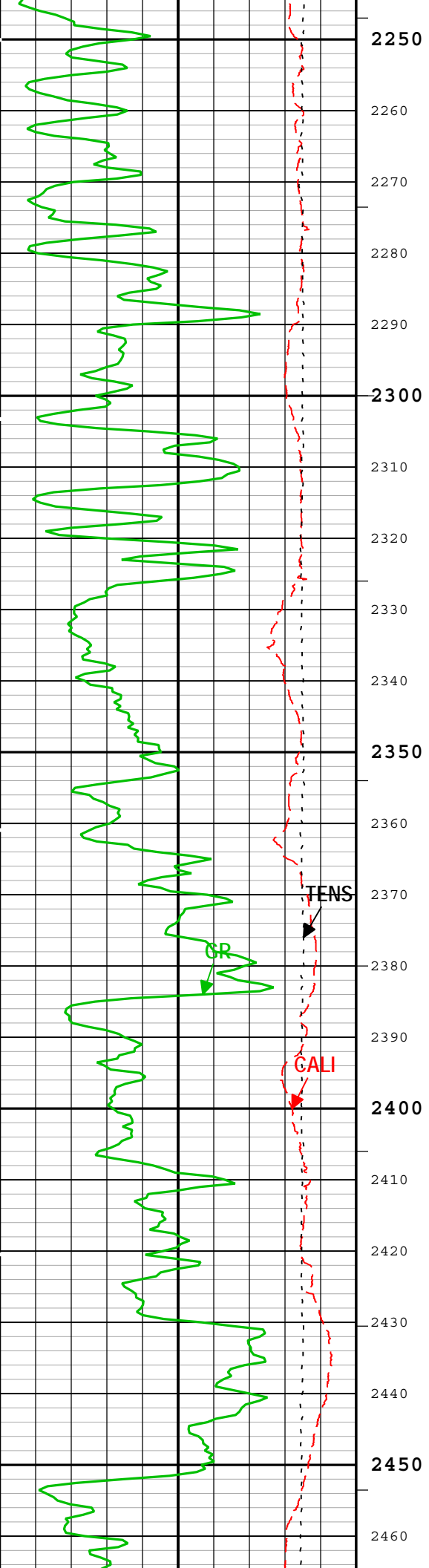


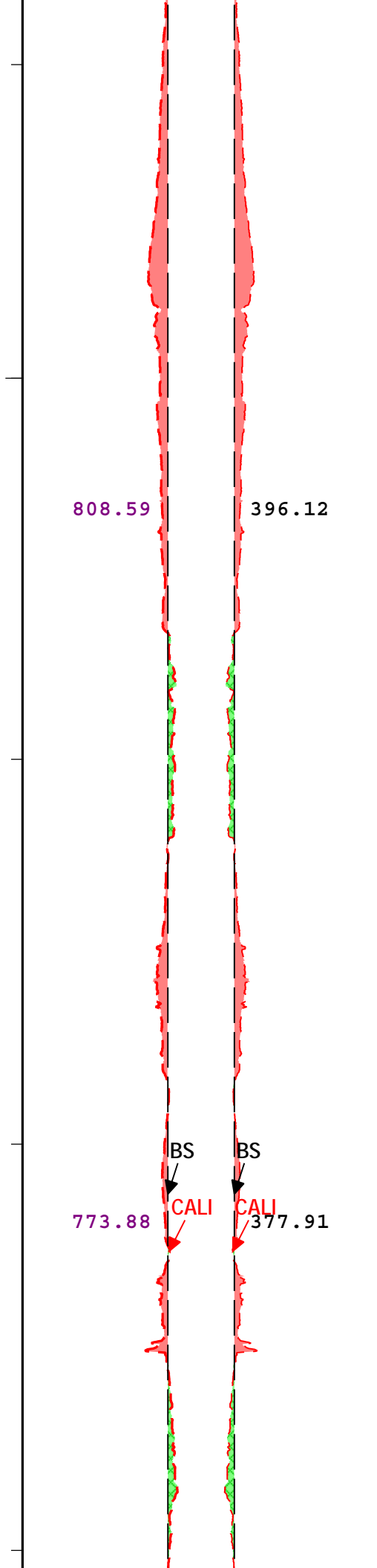
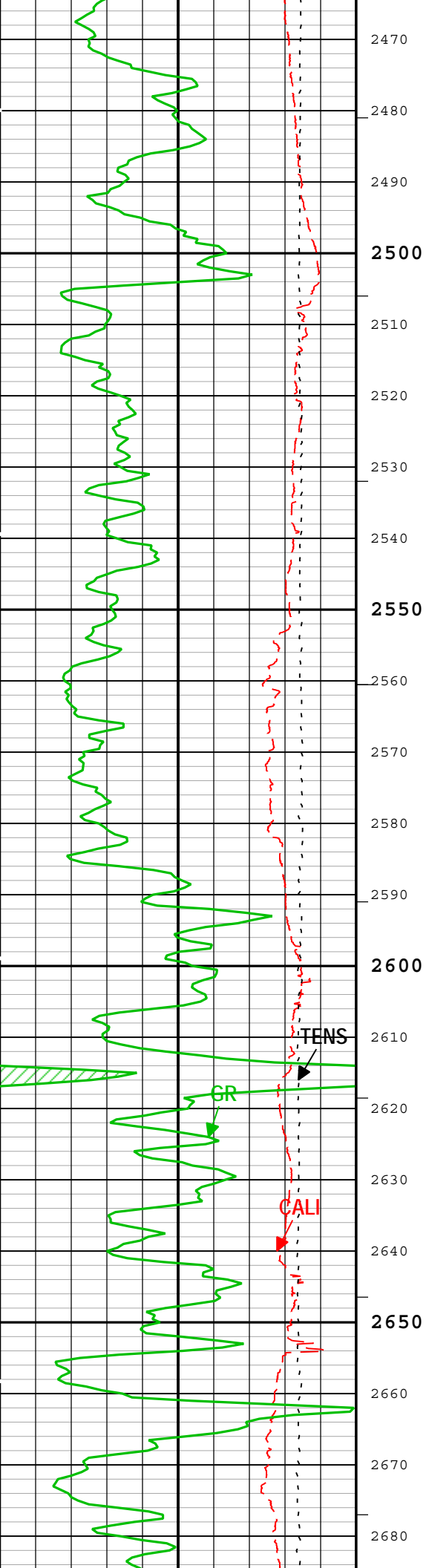


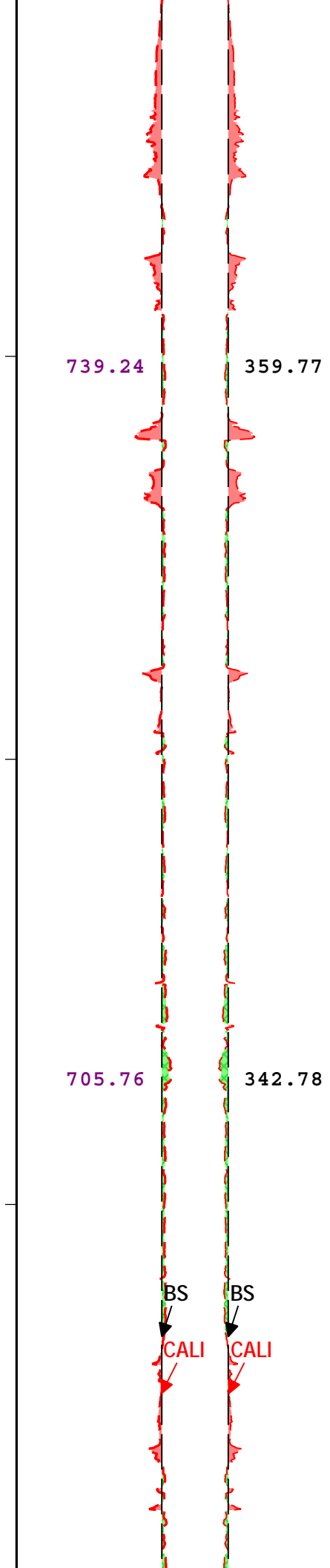
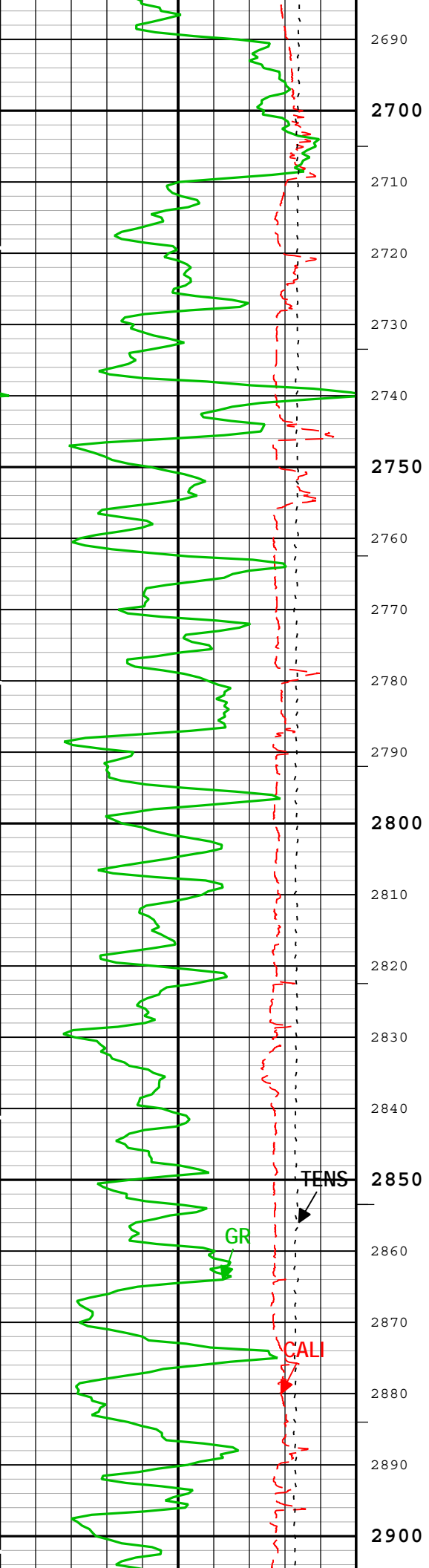


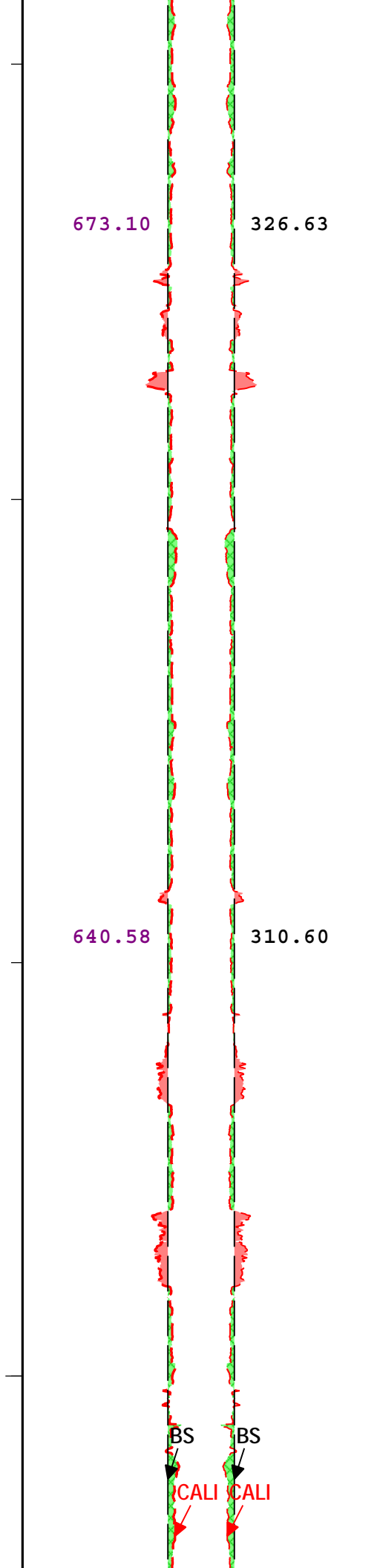
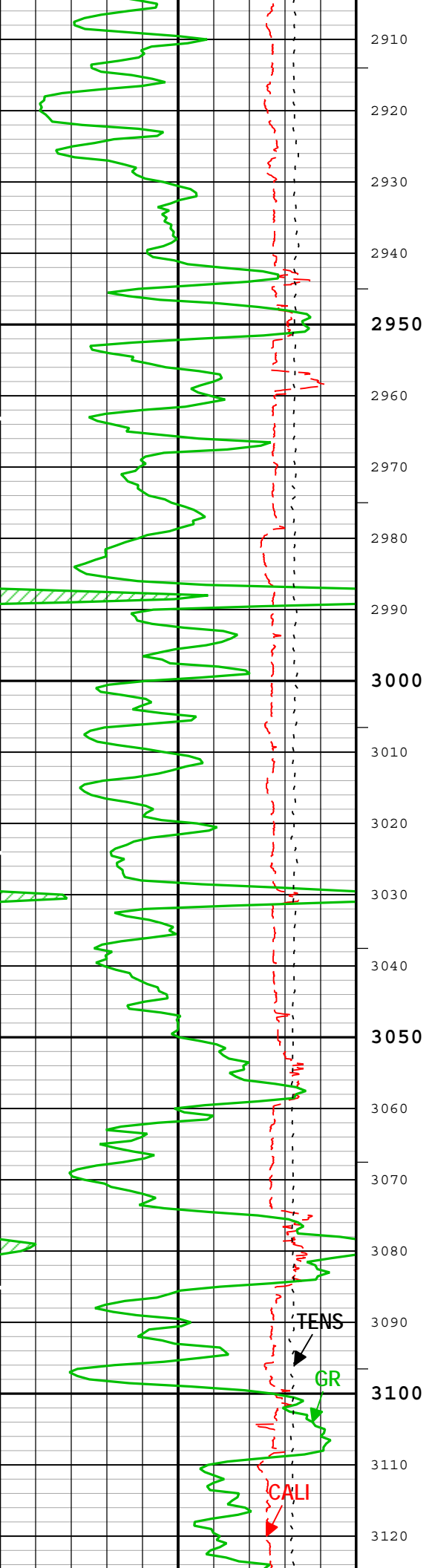


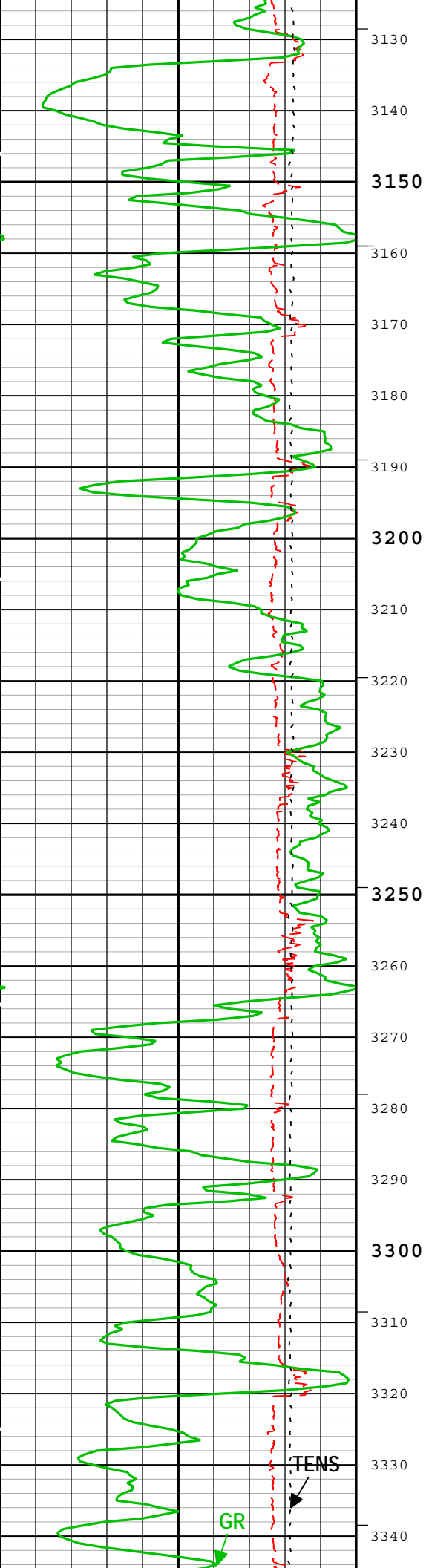












607.45

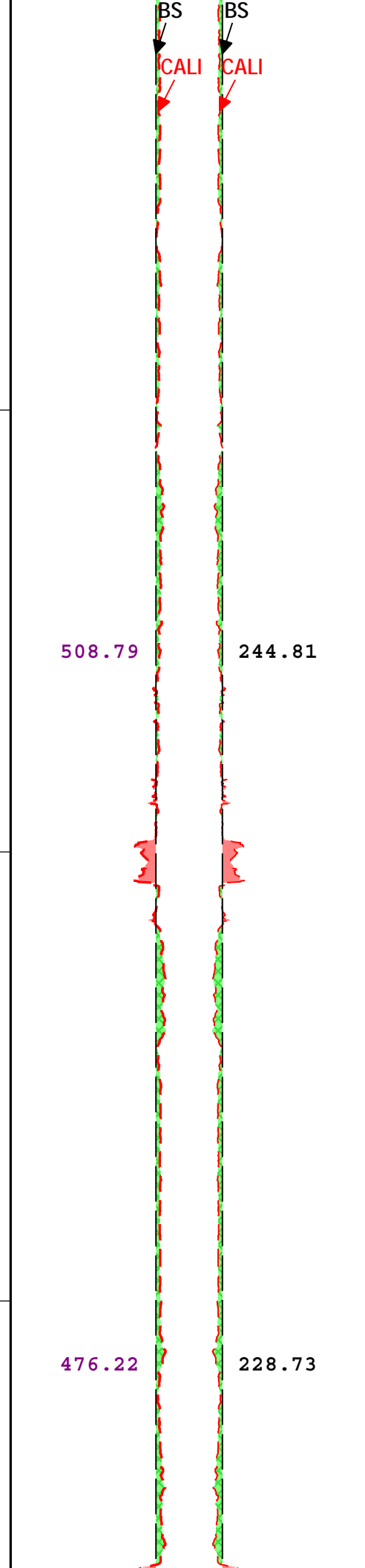
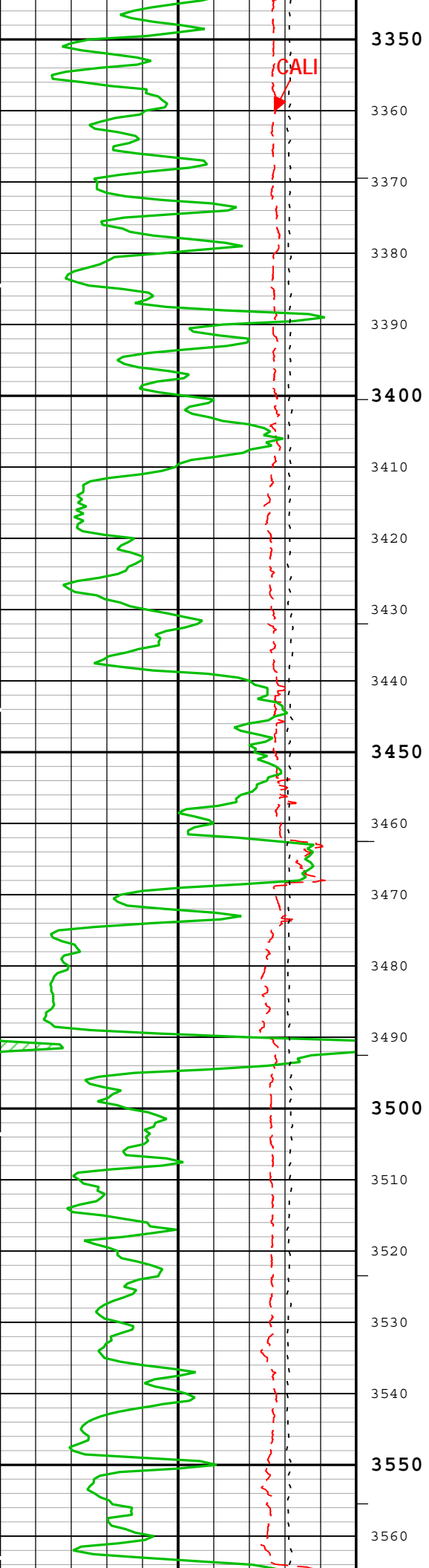
293.97

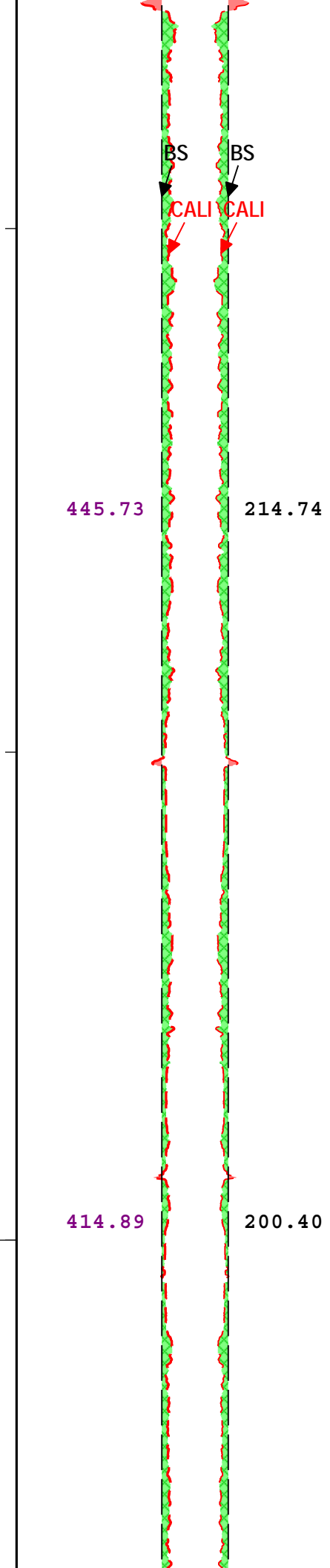
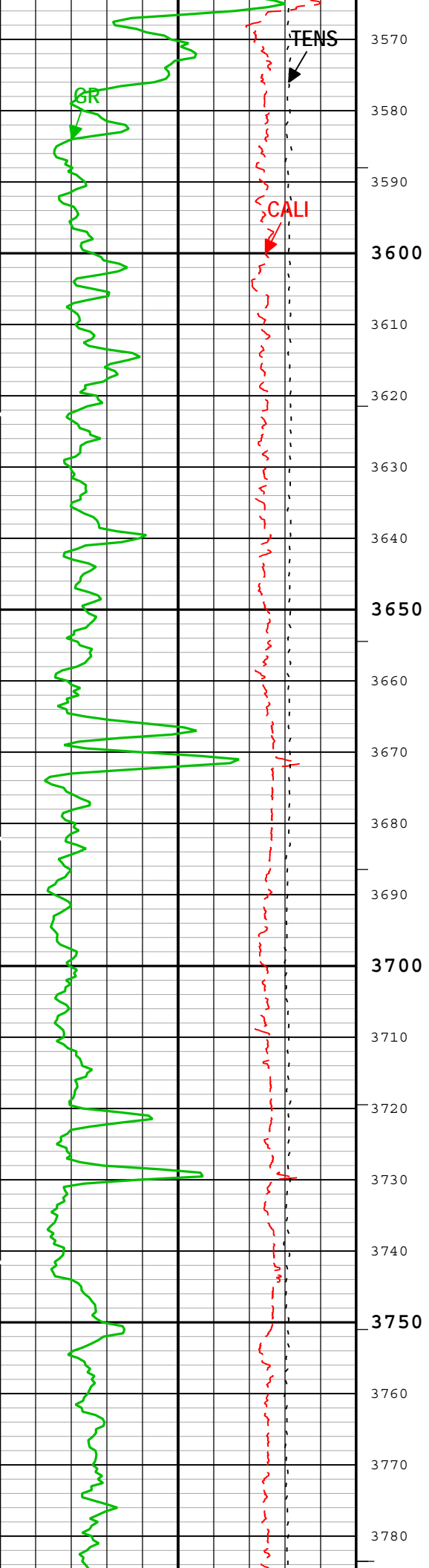
574.40

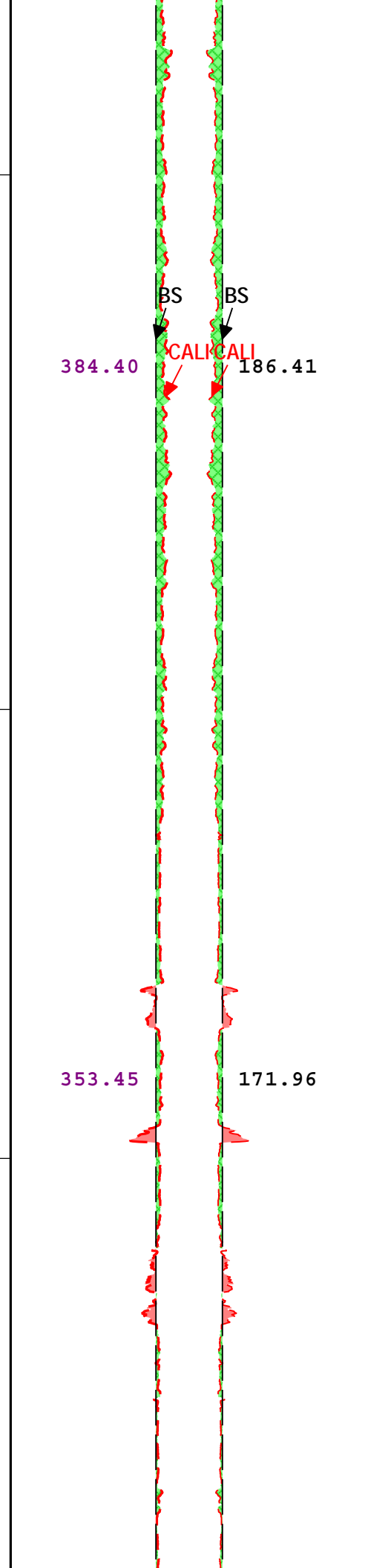
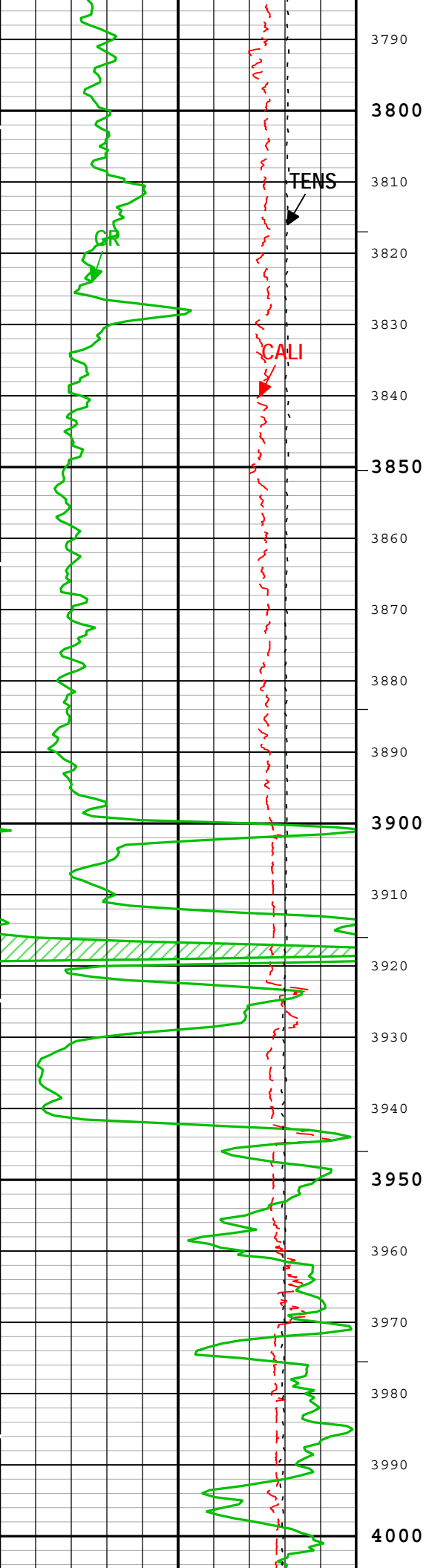
277.42

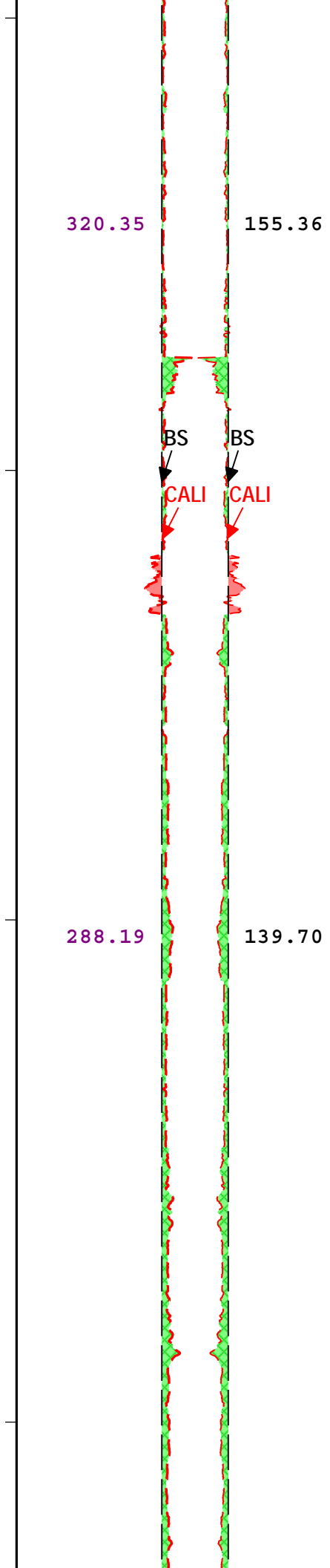
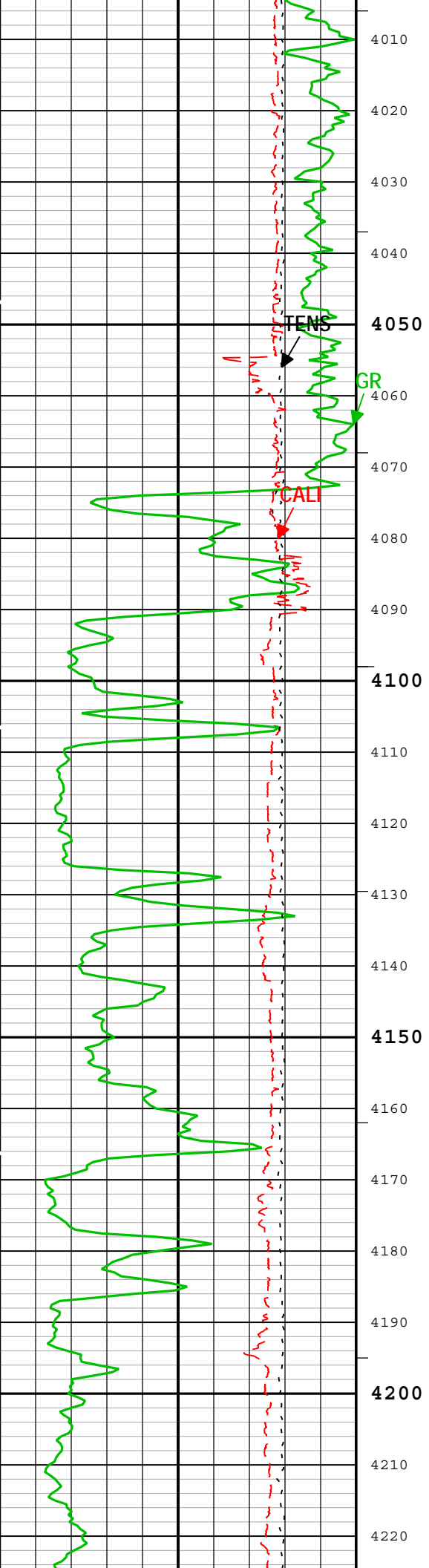
540.91

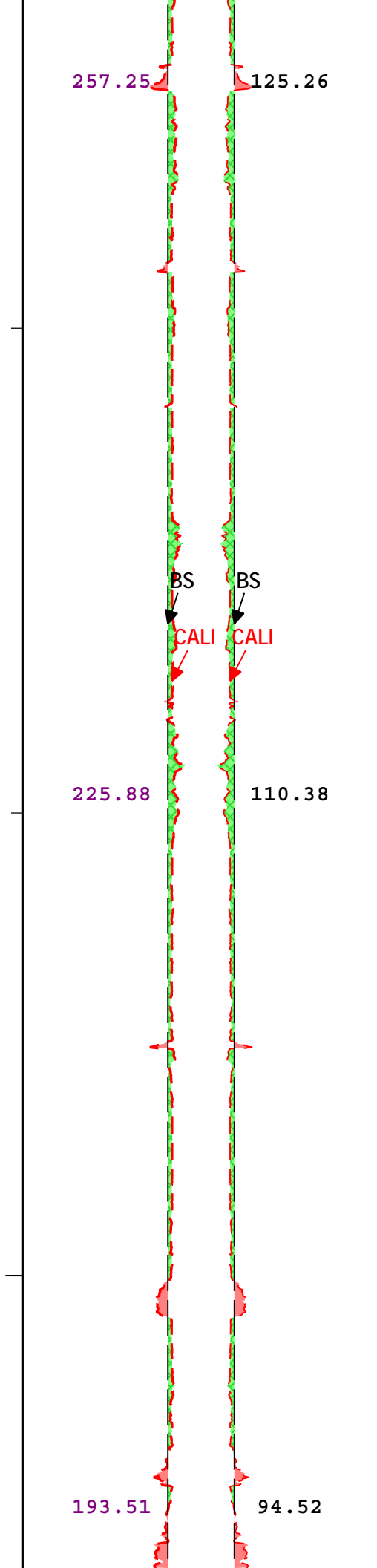
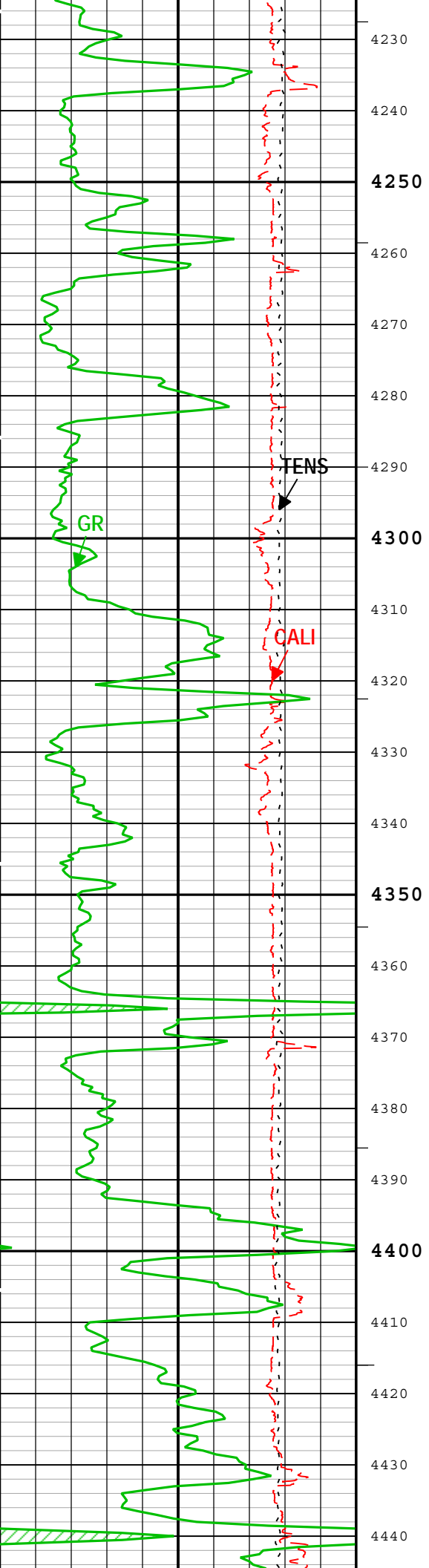
260.42

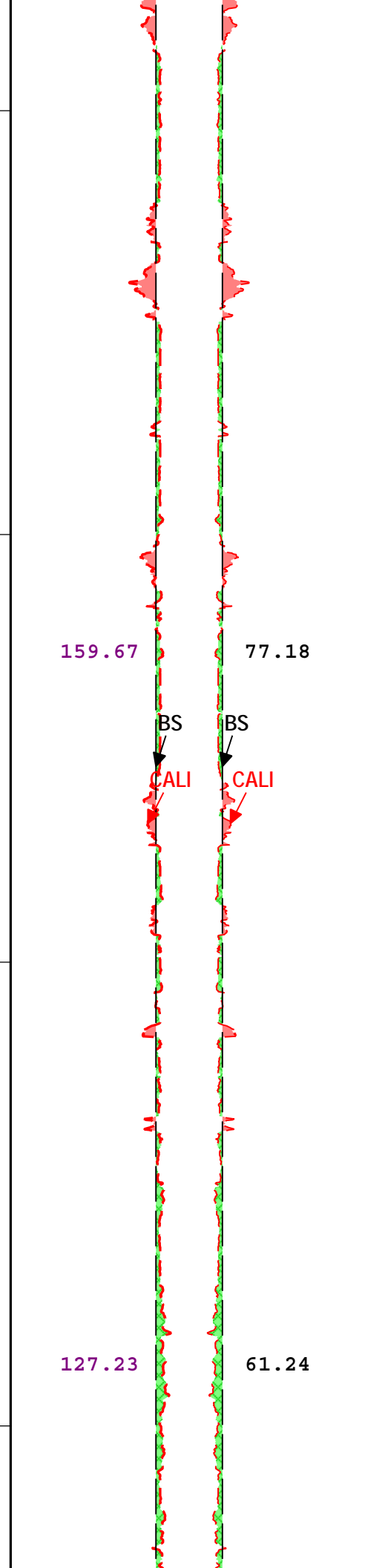
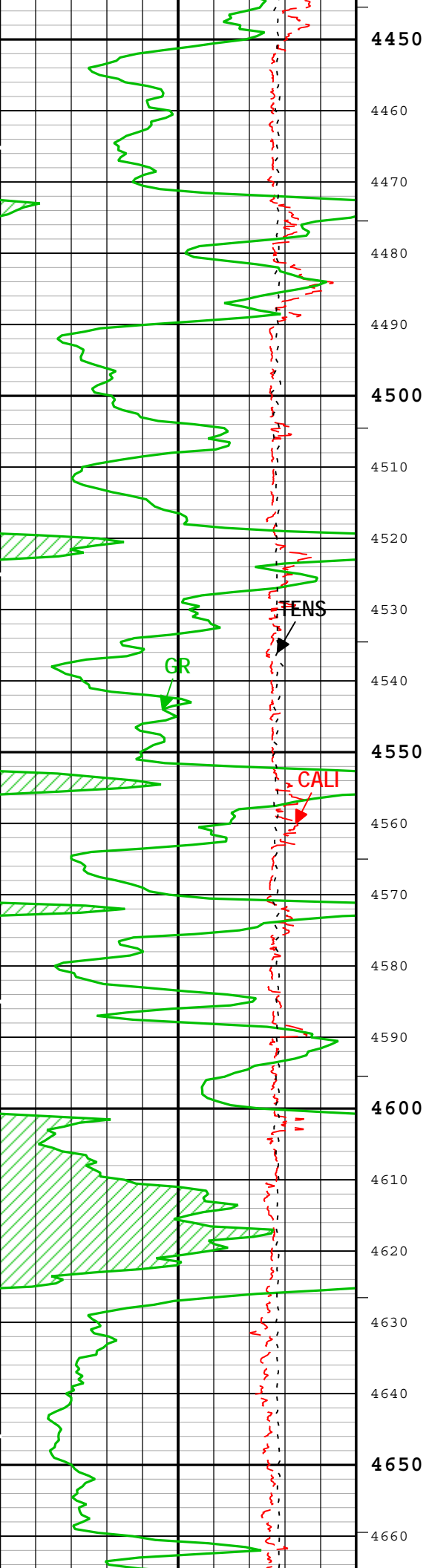


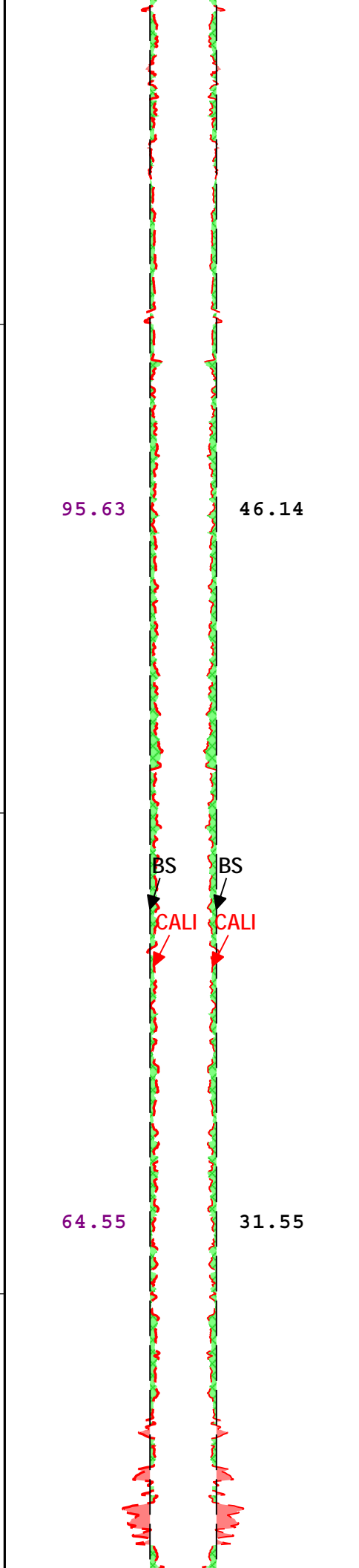
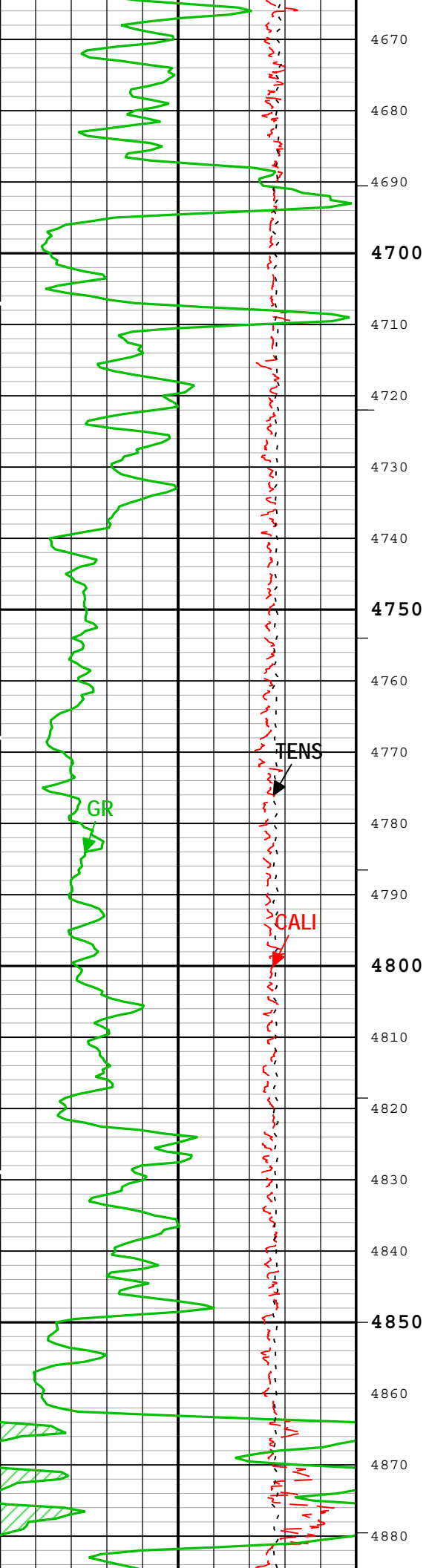


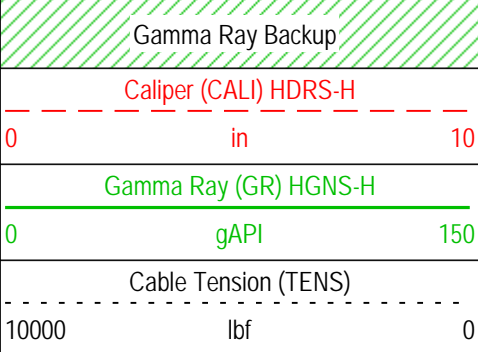
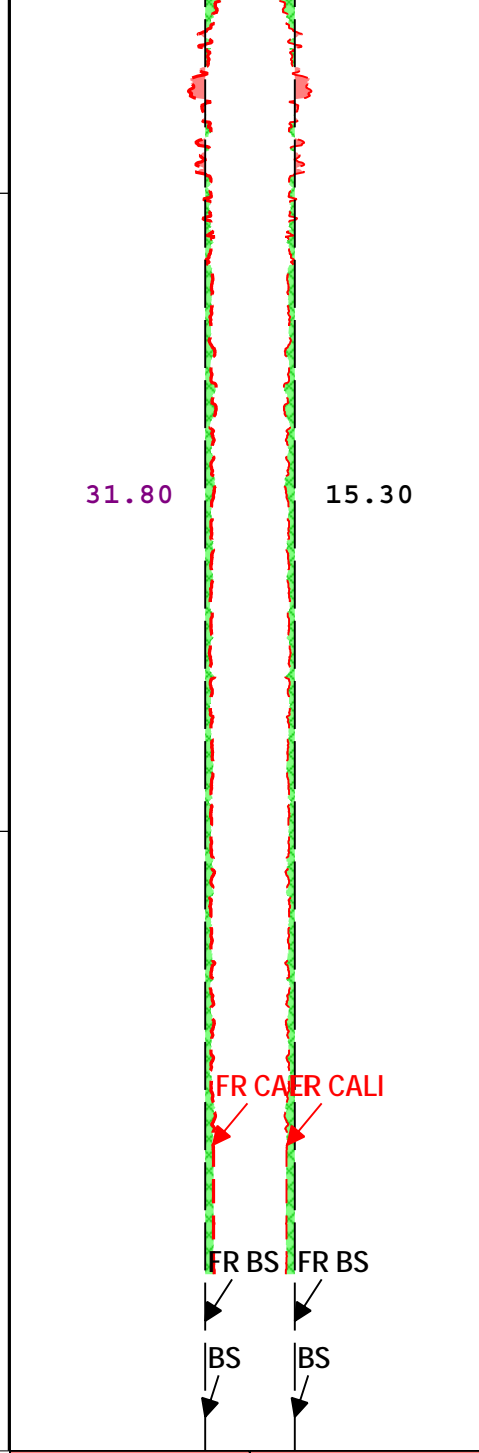
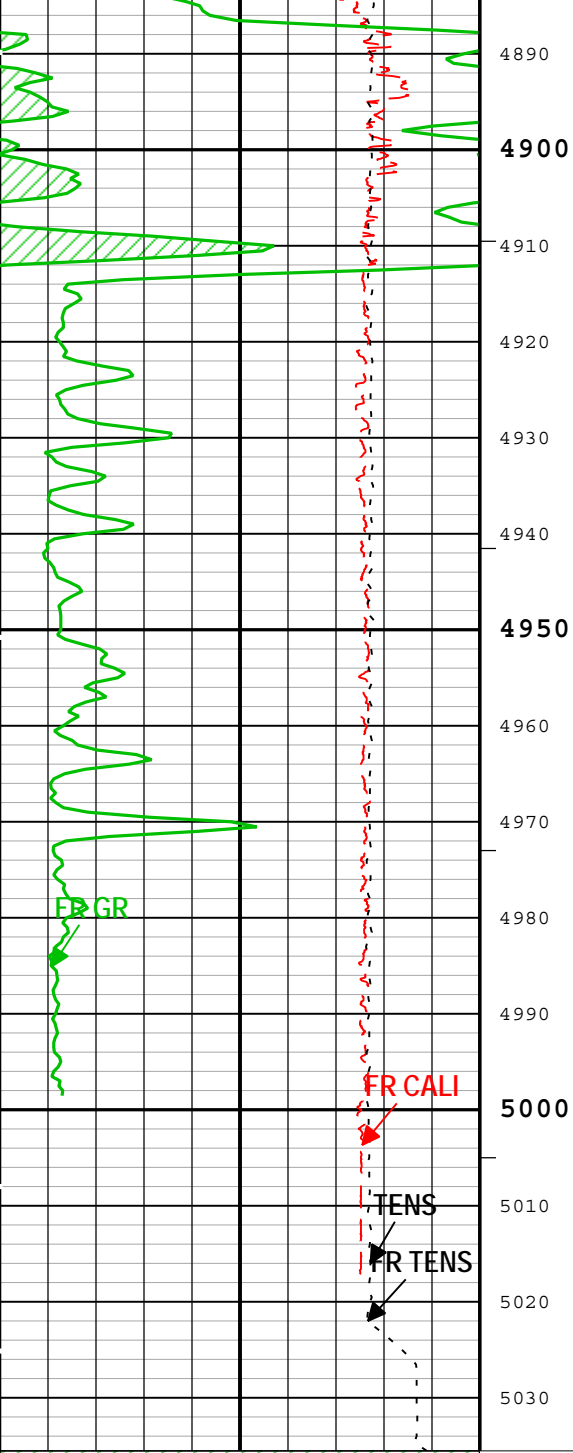












Washout		Washout	
Mudcake		Mudcake	
Caliper (CALI) HDRS-H		Caliper (CALI) HDRS-H	
16 in	6 in	6 in	16 in
Bit Size (BS)		Bit Size (BS)	
16 in	6 in	6 in	16 in
Integrated Hole Volume (IHV) ft3		Integrated Cement Volume (ICV) ft3	

— ICV - Integrated Cement Volume every 100.00 (ft3)

— ICV - Integrated Cement Volume every 10.00 (ft3)

— IHV - Integrated Hole Volume every 10.00 (ft3)

Description: HGNS standard resolution porosities for Platform Express Format: Log (Skinny Caliper 2in_Elk City) Index Scale: 5 in per 100 ft Index Unit: ft
 Index Type: Measured Depth Creation Date: 30-Oct-2014 17:49:30

Channel Processing Parameters

Parameter	Description	Tool	Value	Unit
BARI	Barite Mud Presence Flag	Borehole	No	
BHS	Borehole Status (Open or Cased Hole)	Borehole	Open	
BS	Bit Size	WLSESSION	7.875	in
CALI_SHIFT	CALI Supplementary Offset	HDRS-H	0	in
CBLO	Casing Bottom (Logger)	WLSESSION	608	ft
CDEN	Cement Density	HGNS-H	2	g/cm3
CSODDRL	Casing Outer Diameter - Zoned along driller depths	WLSESSION	8.625	in
DFD	Drilling Fluid Density	Borehole	9.4	lbm/gal
FCD	Future Casing (Outer) Diameter	WLSESSION	5.5	in
GCSE_DOWN_PASS	Generalized Caliper Selection for WL Log Down Passes	Borehole	BS	
GCSE_UP_PASS	Generalized Caliper Selection for WL Log Up Passes	Borehole	CALI	
SOCO	Standoff Correction Option	HGNS-H	Yes	

Tool Control Parameters

Parameter	Description	Tool	Value	Unit
MAX_LOG_SPEED	Toolstring Maximum Logging Speed	WLSESSION	3600	ft/h

Company: OMIMEX PETROLEUM INC.

Schlumberger

Well: CLARK 6-21

Field: FRUIT NORTH

County: KIOWA

State: KANSAS

BOREHOLE PROFILE

IHV / ICV

GAMMA RAY