



**COMPLETION
& PRODUCTION
SERVICES CO.**

**DUAL
INDUCTION
LOG**

Company MUSTANG ENERGY CORPORATION
Well WERTH #1-5
Field BIG TIMBER
County RUSH State KANSAS

Company MUSTANG ENERGY CORPORATION
Well WERTH #1-5
Field BIG TIMBER
County RUSH
State KANSAS

Location: API #: 15-165-22023-00-00
1980' FSL & 330' FWL
W2 - NW - SW
SEC 5 TWP 16S RGE 18W
Permanent Datum GROUND LEVEL Elevation 2026
Log Measured From KELLY BUSHING 8' A.G.L.
Drilling Measured From KELLY BUSHING
Other Services
CNL/CDL
MEL
Elevation
K.B. 2034
D.F. 2032
G.L. 2026

Date	5/5/13		
Run Number	ONE		
Depth Driller	3675		
Depth Logger	3675		
Bottom Logged Interval	3673		
Top Log Interval	00		
Casing Driller	1203		
Casing Logger	1200		
Bit Size	7.875		
Type Fluid in Hole	CHEMICAL MUD	CHLORIDES 5.000	
Density / Viscosity	9.20 / 52		
pH / Fluid Loss	9.00 / 8.8		
Source of Sample	FLOWLINE		
Rim @ Meas. Temp	0.65 @ 70F		
Rmf @ Meas. Temp	0.49 @ 70F		
Rmc @ Meas. Temp	0.78 @ 70F		
Source of Rmf / Rmc	MEASURED		
Rim @ BHT	0.40 @ 113F		
Time Circulation Stopped	2 HOURS		
Time Logger on Bottom			
Maximum Recorded Temperature	113F		
Equipment Number	860		
Location	HAYS, KS.		
Recorded By	IAN MABB		
Witnessed By	HERB DEINES		

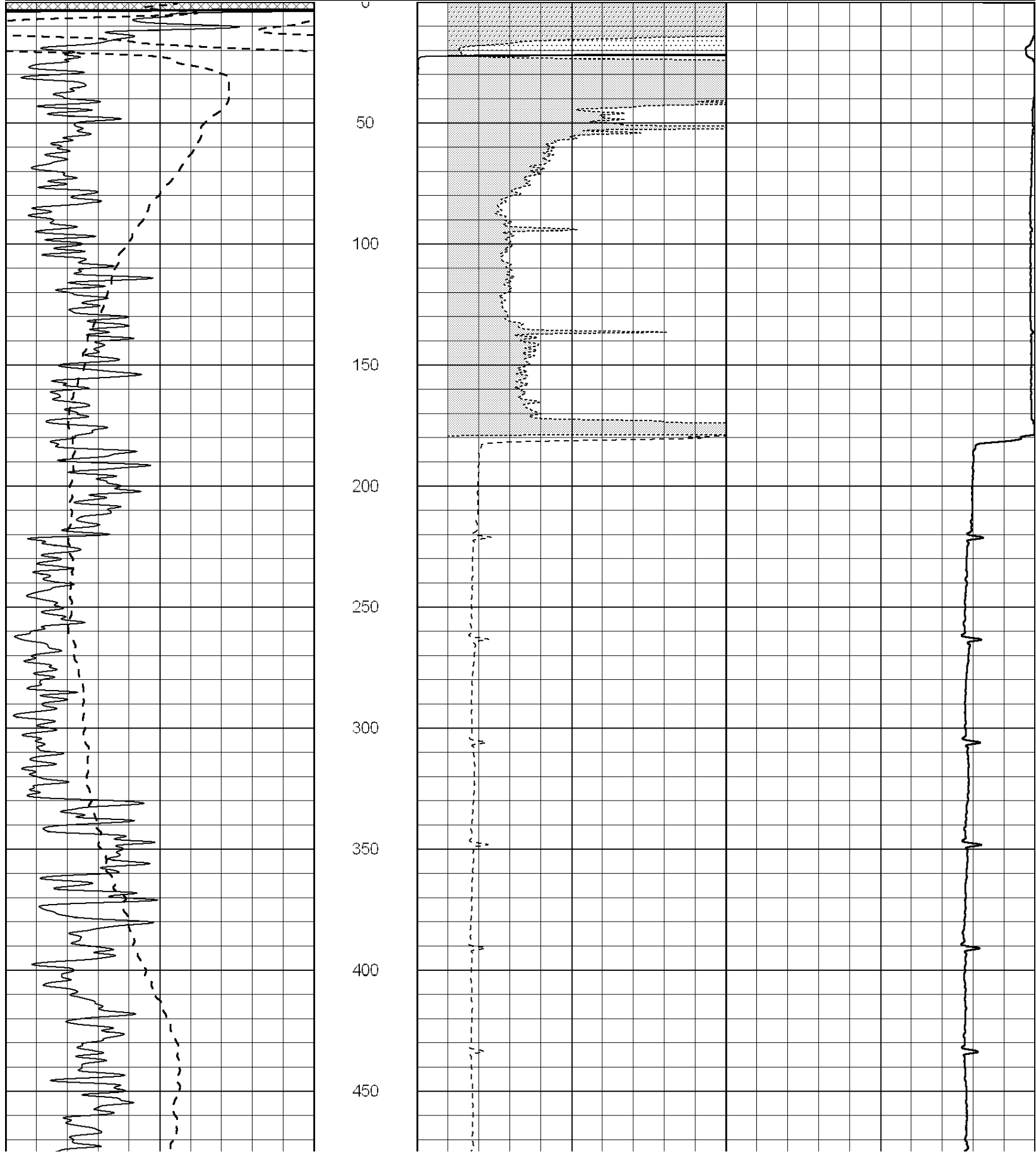
<<< Fold Here >>>

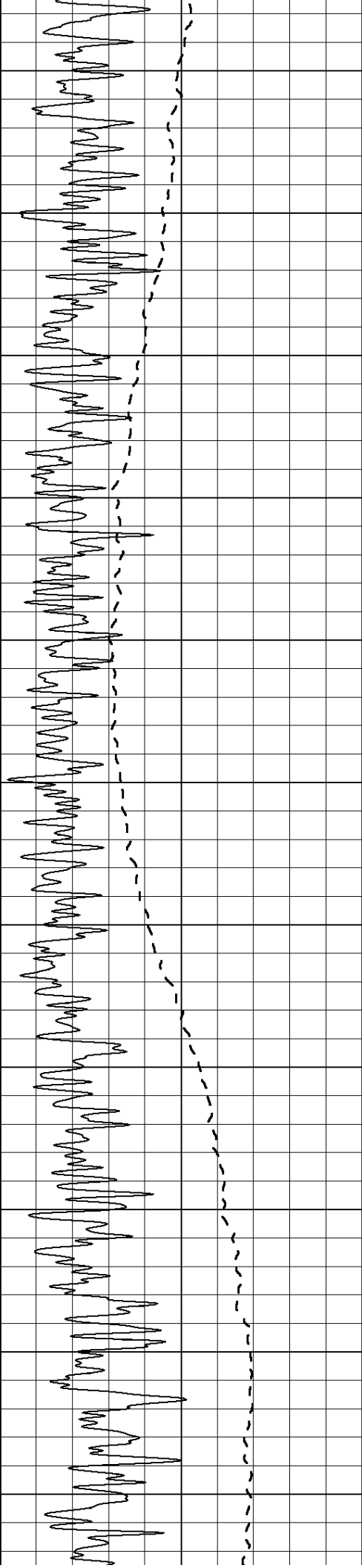
All interpretations are opinions based on inferences from electrical or other measurements and we cannot and do not guarantee the accuracy or correctness of any interpretation, and we shall not, except in the case of gross or willful negligence on our part, be liable or responsible for any loss, costs, damages, or expenses incurred or sustained by anyone resulting from any interpretation made by any of our officers, agents or employees. These interpretations are also subject to our general terms and conditions set out in our current Price Schedule.

Comments

NABORS COMPLETION & PRODUCTION SERVICES
785-628-6395
THANK YOU FOR YOUR BUSINESS
DIRECTIONS: SCHOENCHEN, KS. - SOUTH TO AVE A. - 1 WEST - 1/2 SOUTH EAST INTO

0	Gamma Ray (GAPI)	150	0	RLL3 (Ohm-m)	50	
			0	Deep Induction (Ohm-m)	50	
			1000		CILD (mmho/m)	0
			50	RILD X10 (Ohm-m)	500	
			50	RLL3 X10 (Ohm-m)	500	





500

550

600

650

700

750

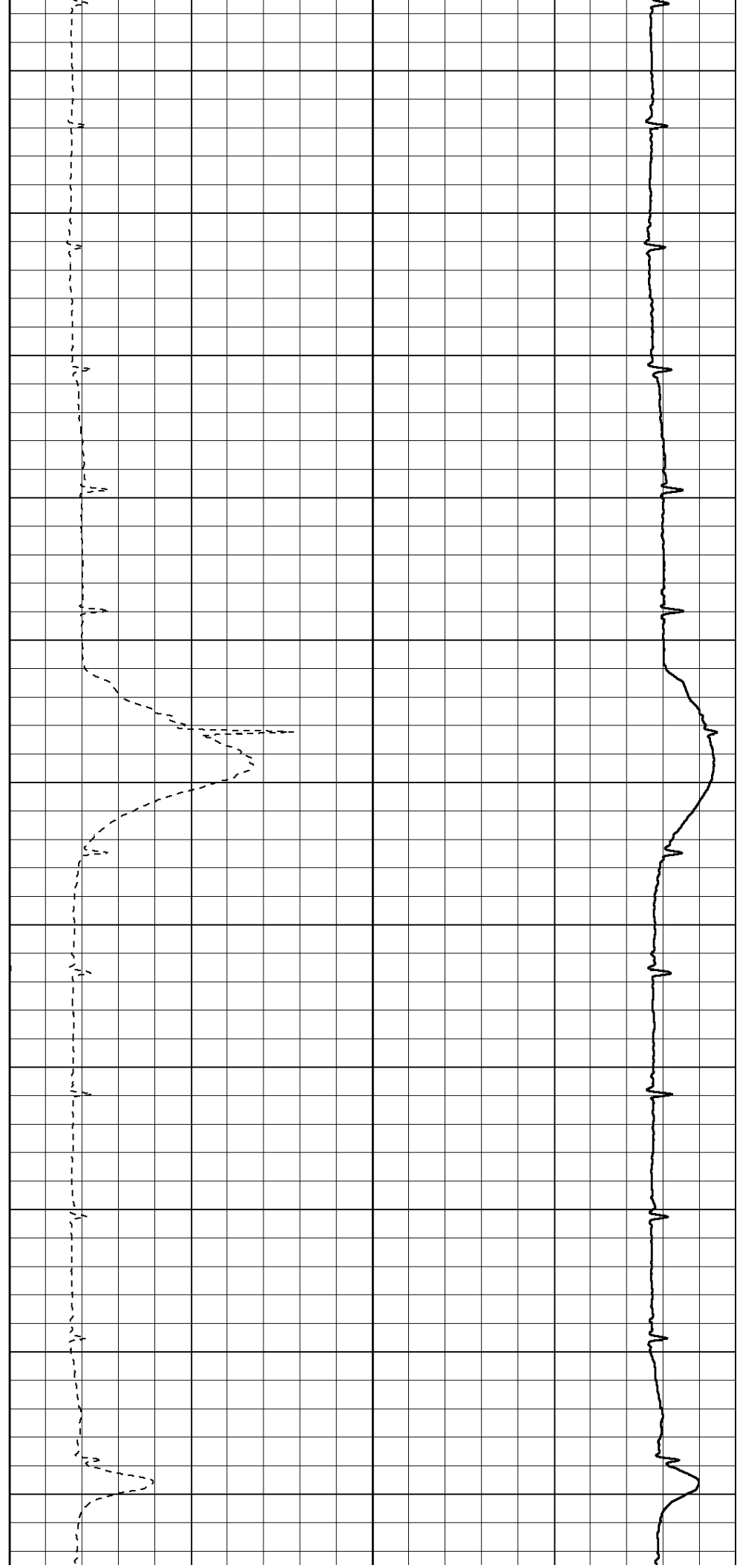
800

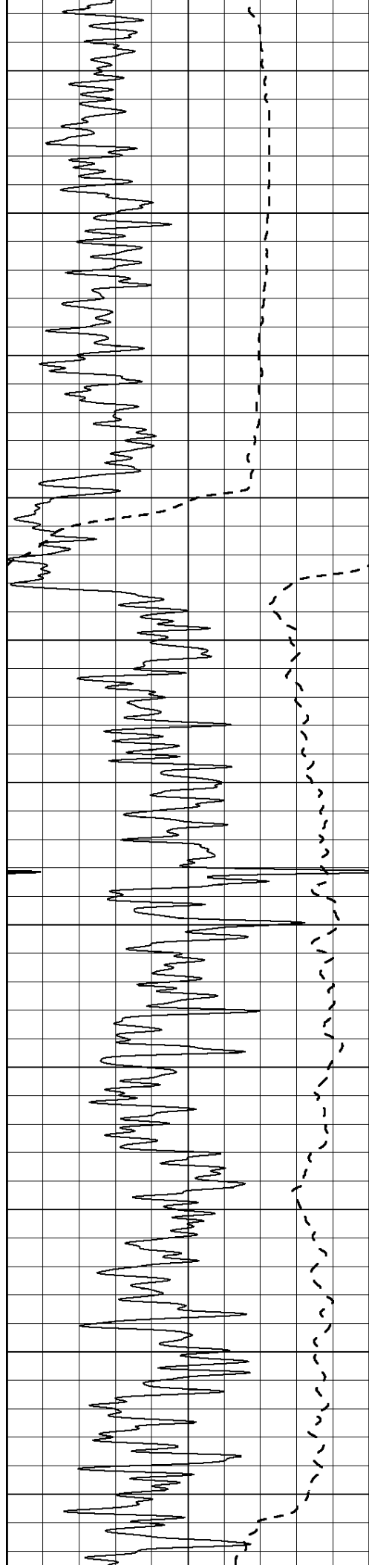
850

900

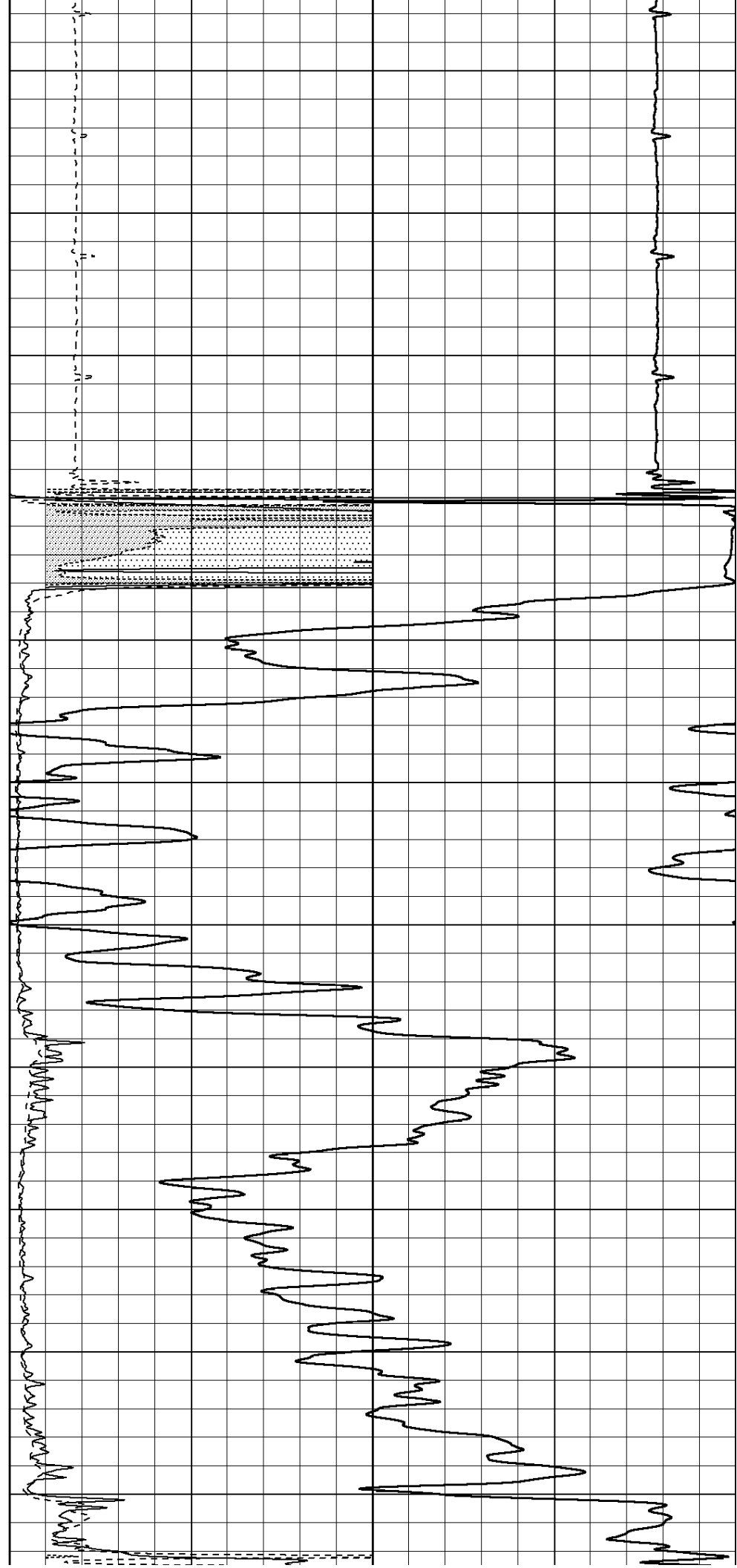
950

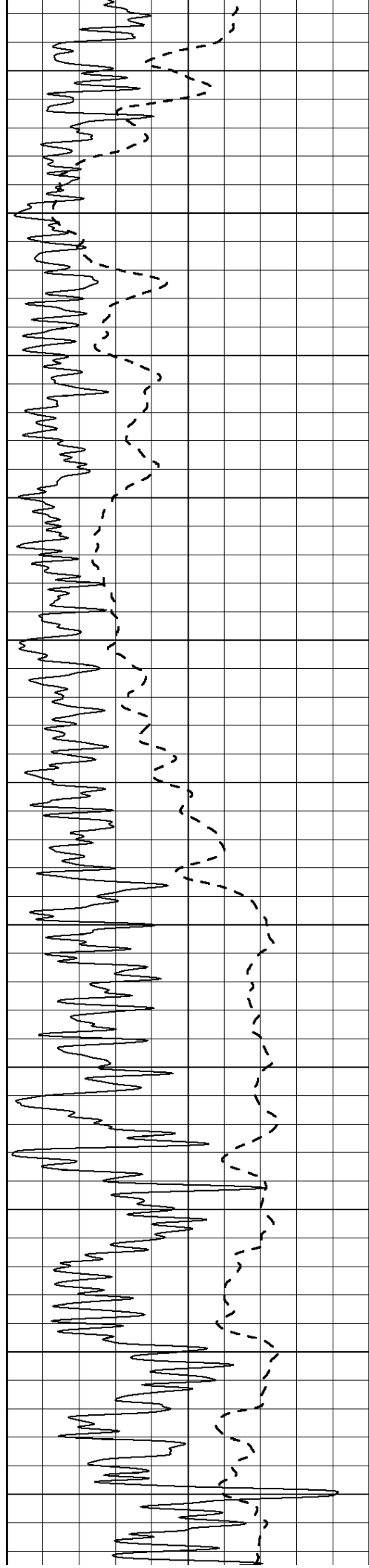
1000



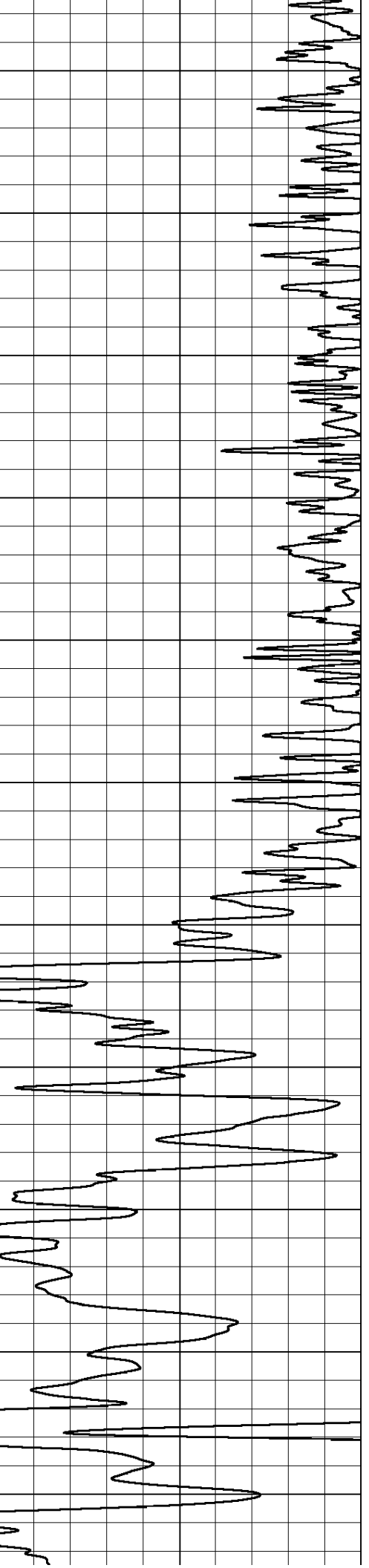
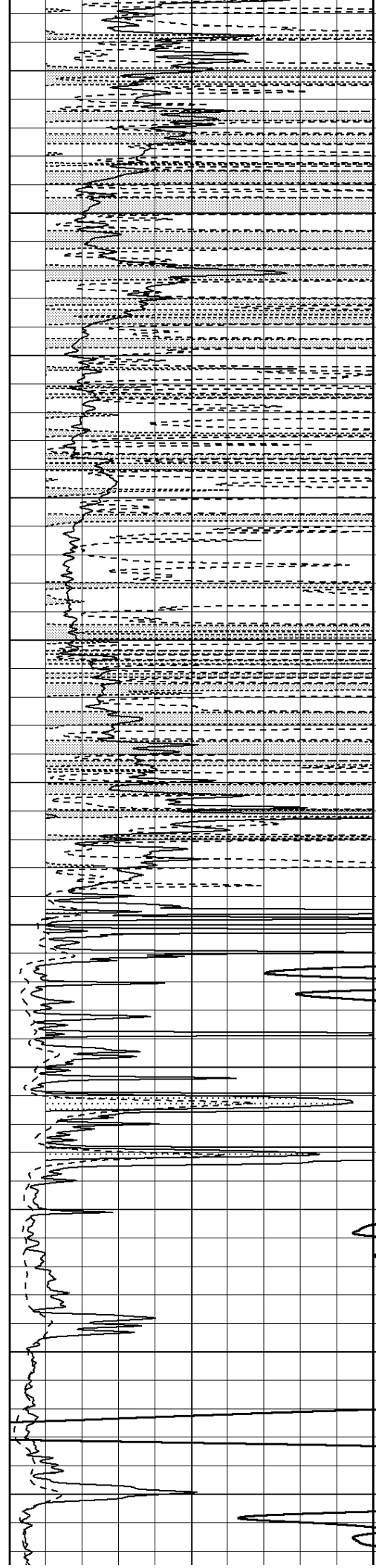


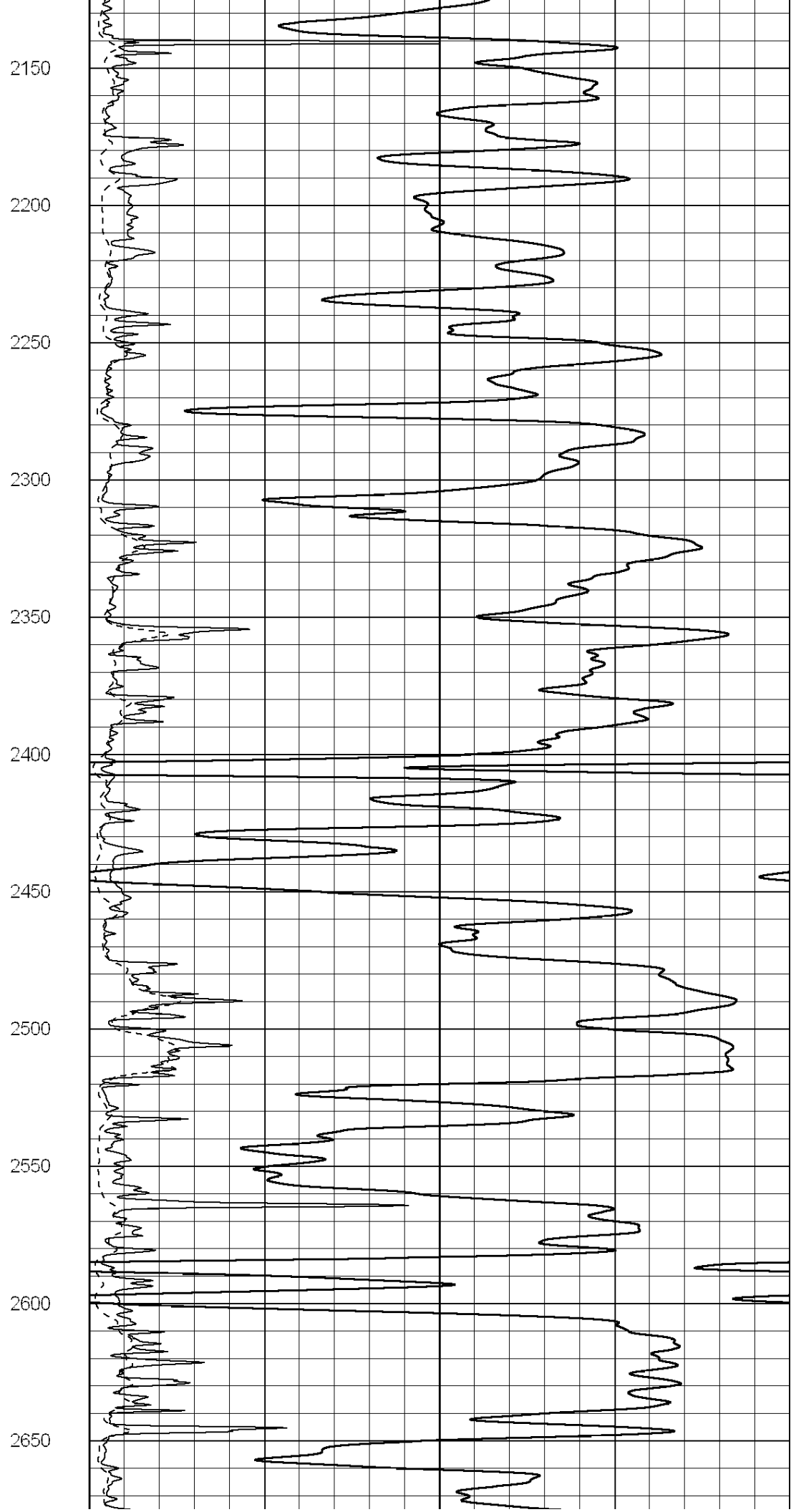
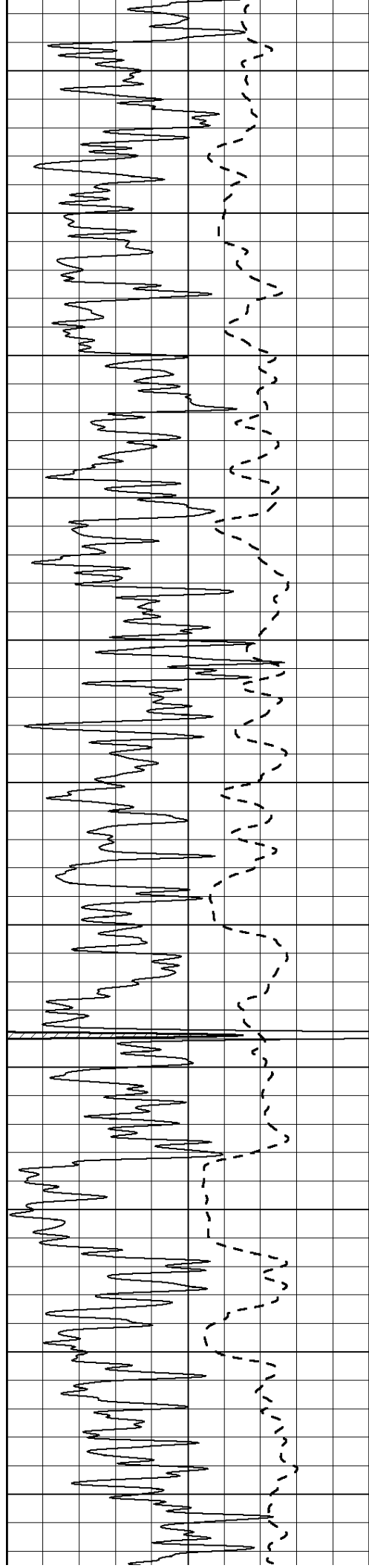
1050
1100
1150
1200
1250
1300
1350
1400
1450
1500
1550

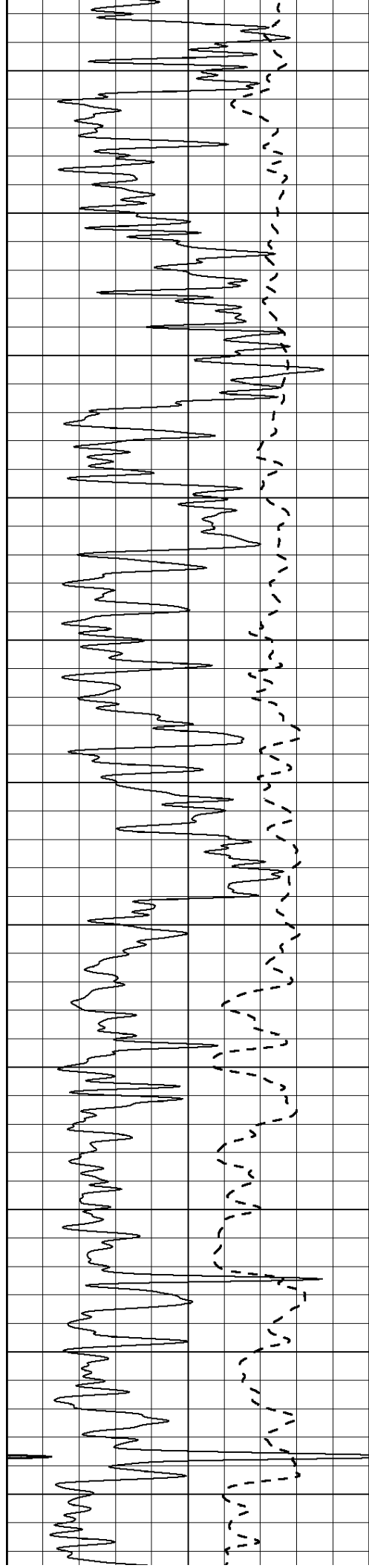




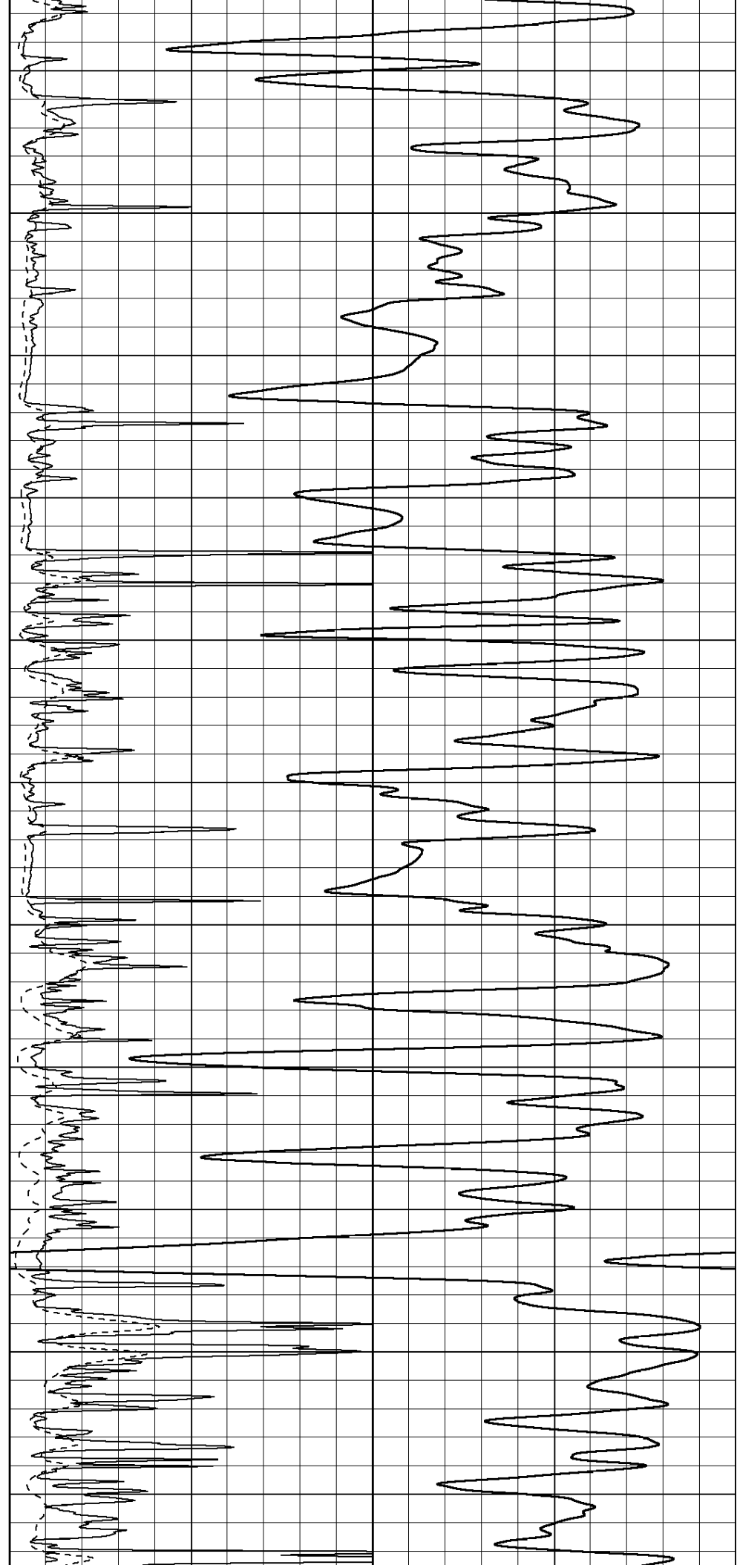
1600
1650
1700
1750
1800
1850
1900
1950
2000
2050
2100

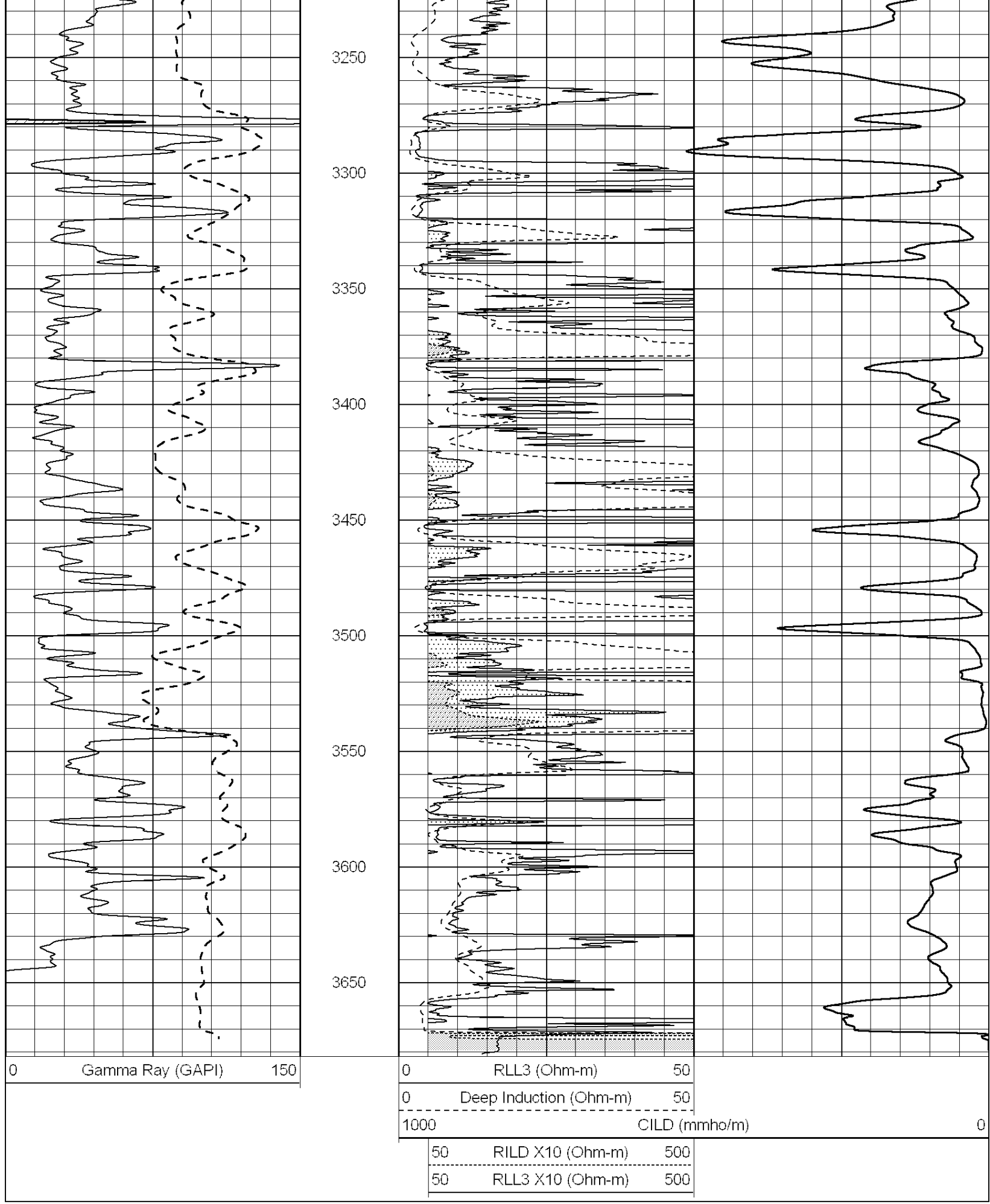






2700
2750
2800
2850
2900
2950
3000
3050
3100
3150
3200

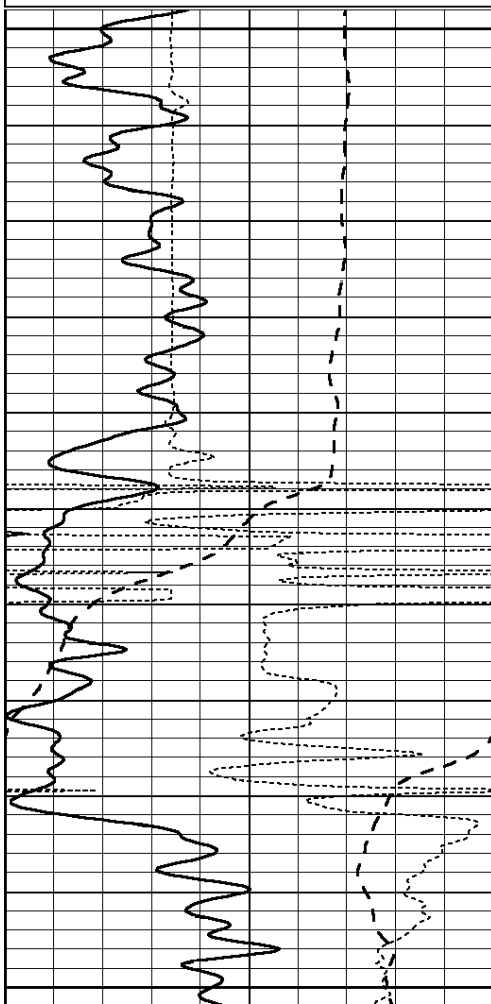




Dataset Pathname: pass3.2
 Presentation Format: _dil
 Dataset Creation: Sun May 05 19:31:39 2013 by Calc Open-Cased 090629
 Charted by: Depth in Feet scaled 1:240

0	GAMMA RAY (GAPI)	150
-100	SP (mV)	100
-250	RxoRt	50
0	MINMK	20

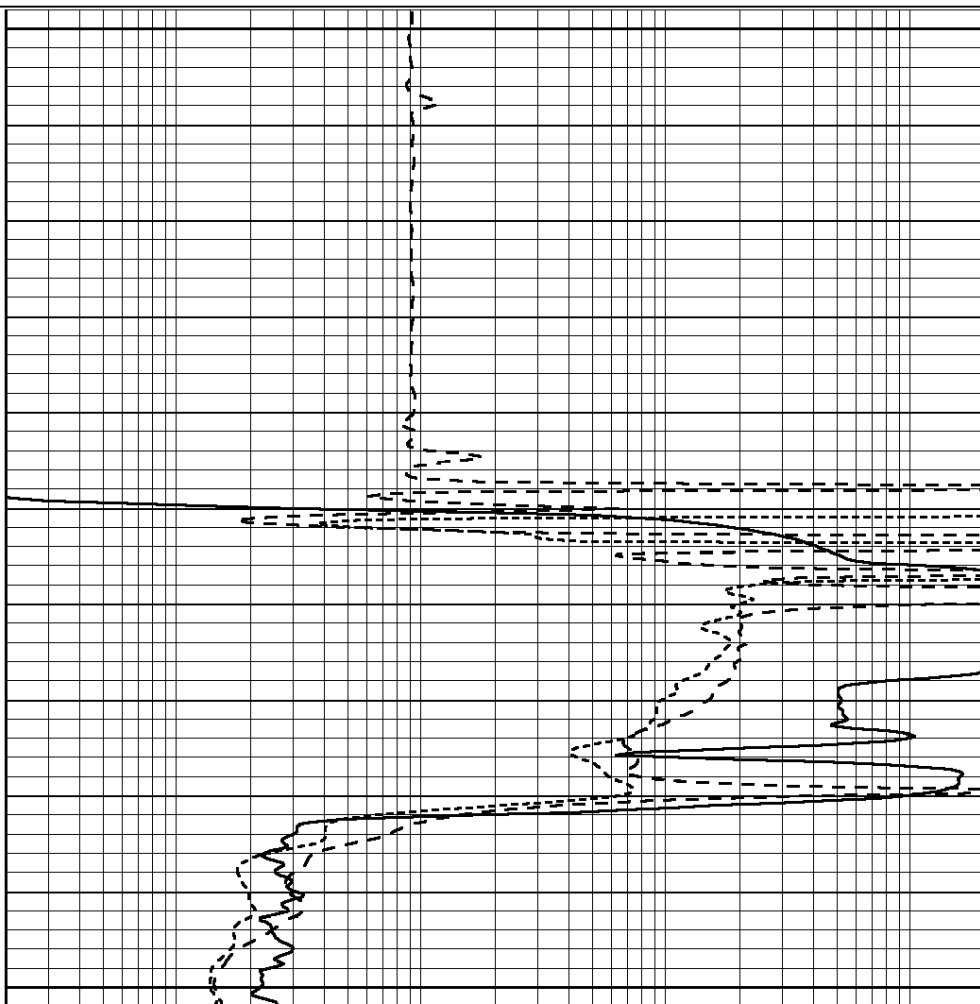
0.2	RLL3 (Ohm-m)	2000
0.2	DEEP INDUCTION (Ohm-m)	2000
0.2	MEDIUM INDUCTION (Ohm-m)	2000



1150

1200

1250



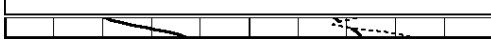
0	GAMMA RAY (GAPI)	150
-100	SP (mV)	100
-250	RxoRt	50
0	MINMK	20

0.2	RLL3 (Ohm-m)	2000
0.2	DEEP INDUCTION (Ohm-m)	2000
0.2	MEDIUM INDUCTION (Ohm-m)	2000

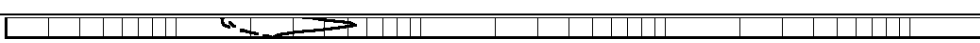
Database File: 010997ddn.db
 Dataset Pathname: pass3.2
 Presentation Format: _dil
 Dataset Creation: Sun May 05 19:05:53 2013 by Calc Open-Cased 090629
 Charted by: Depth in Feet scaled 1:240

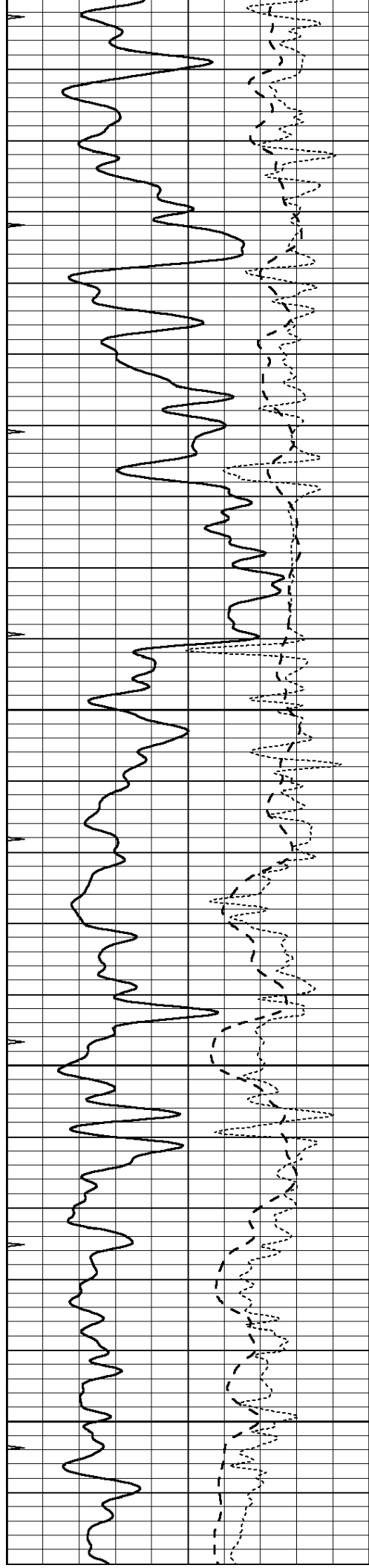
0	GAMMA RAY (GAPI)	150
-100	SP (mV)	100
-250	RxoRt	50
0	MINMK	20

0.2	RLL3 (Ohm-m)	2000
0.2	DEEP INDUCTION (Ohm-m)	2000
0.2	MEDIUM INDUCTION (Ohm-m)	2000



2000





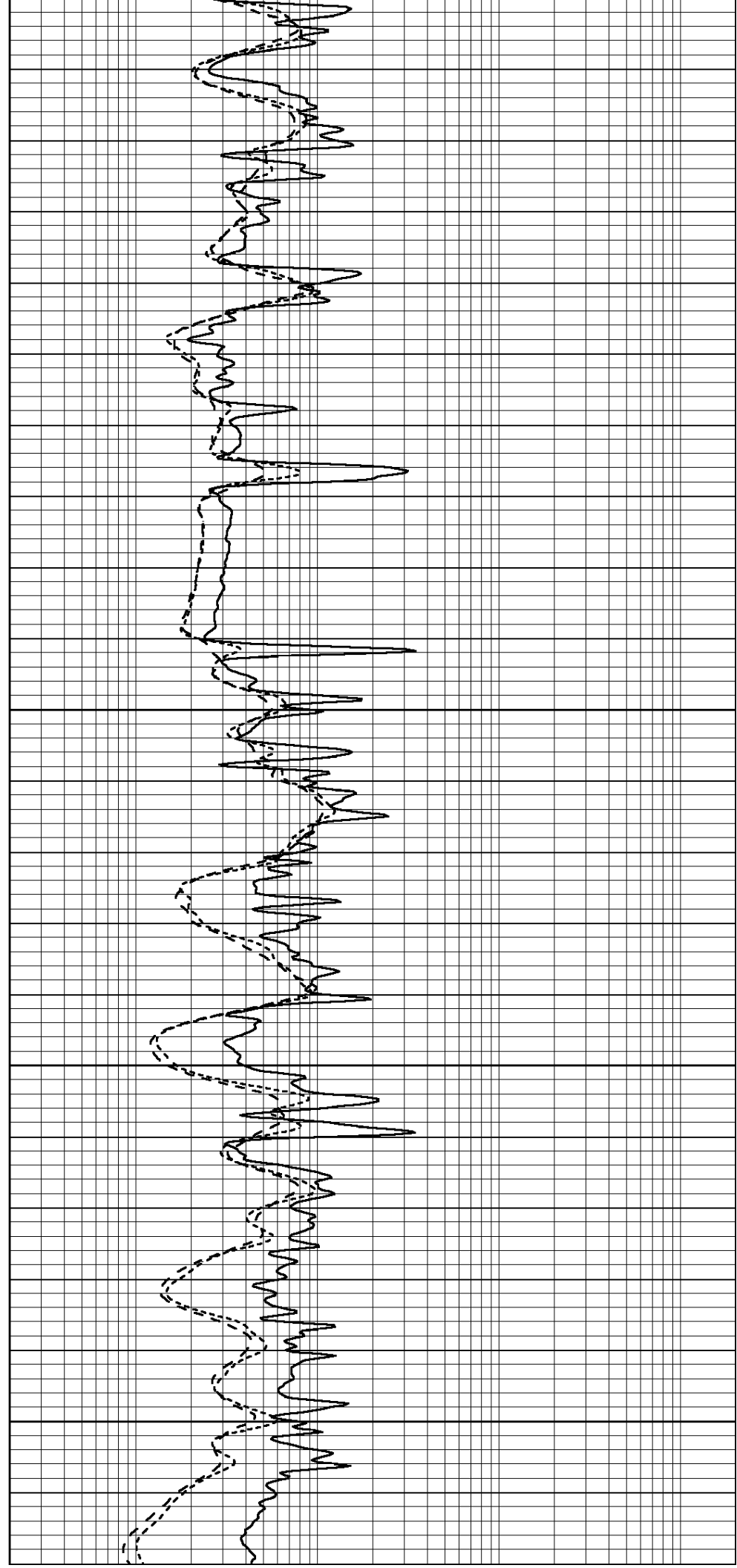
2900

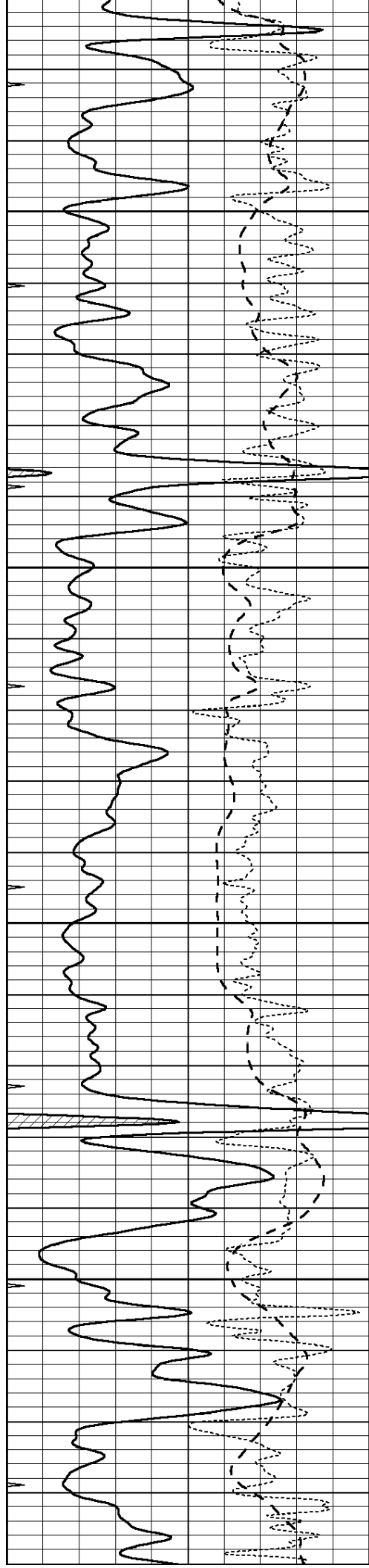
2950

3000

3050

3100



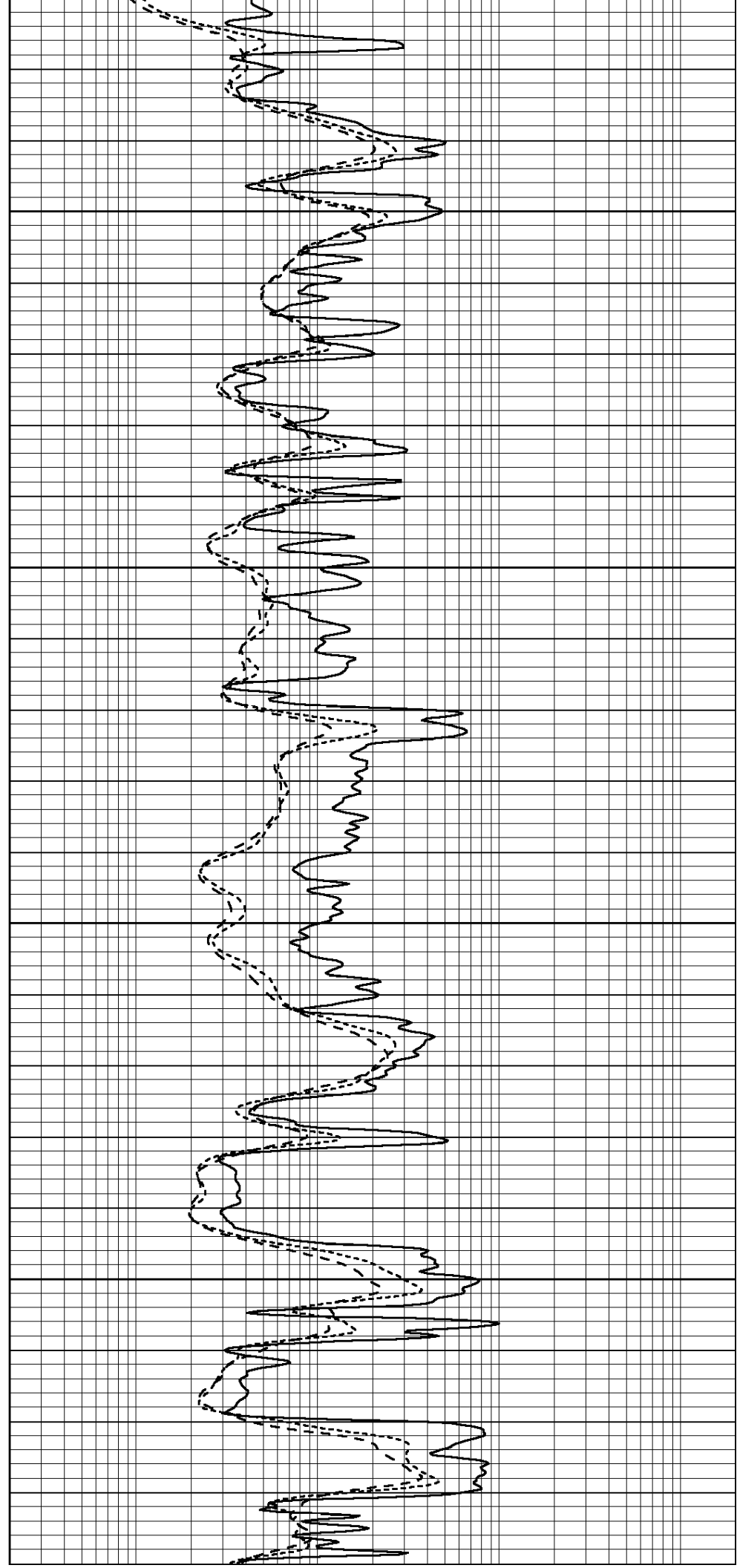


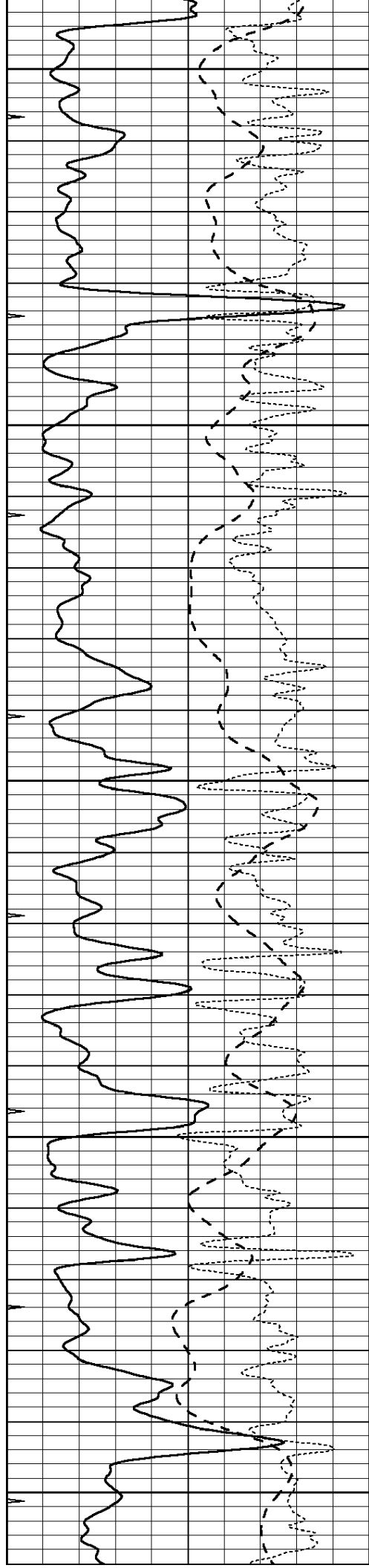
3150

3200

3250

3300





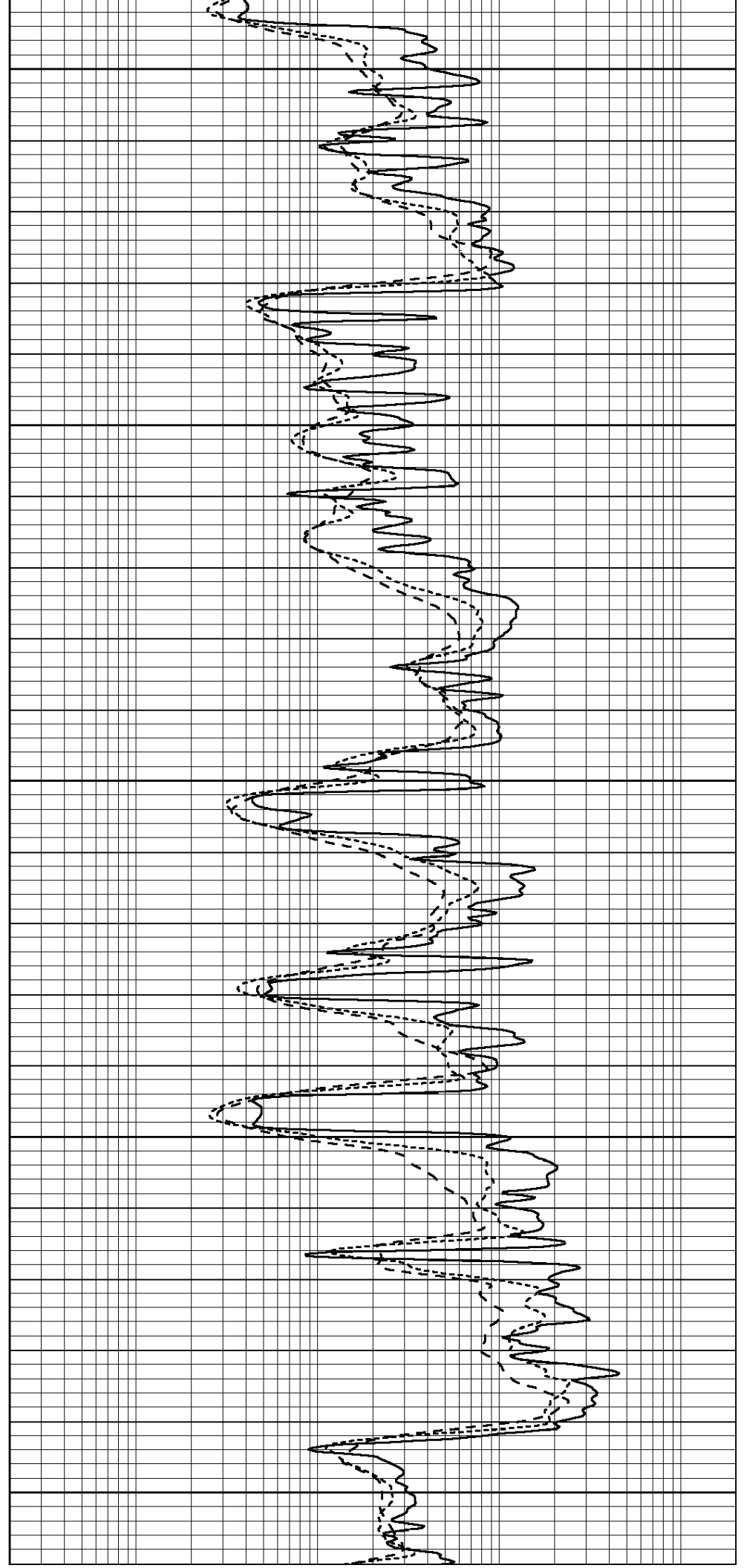
3350

3400

3450

3500

3550



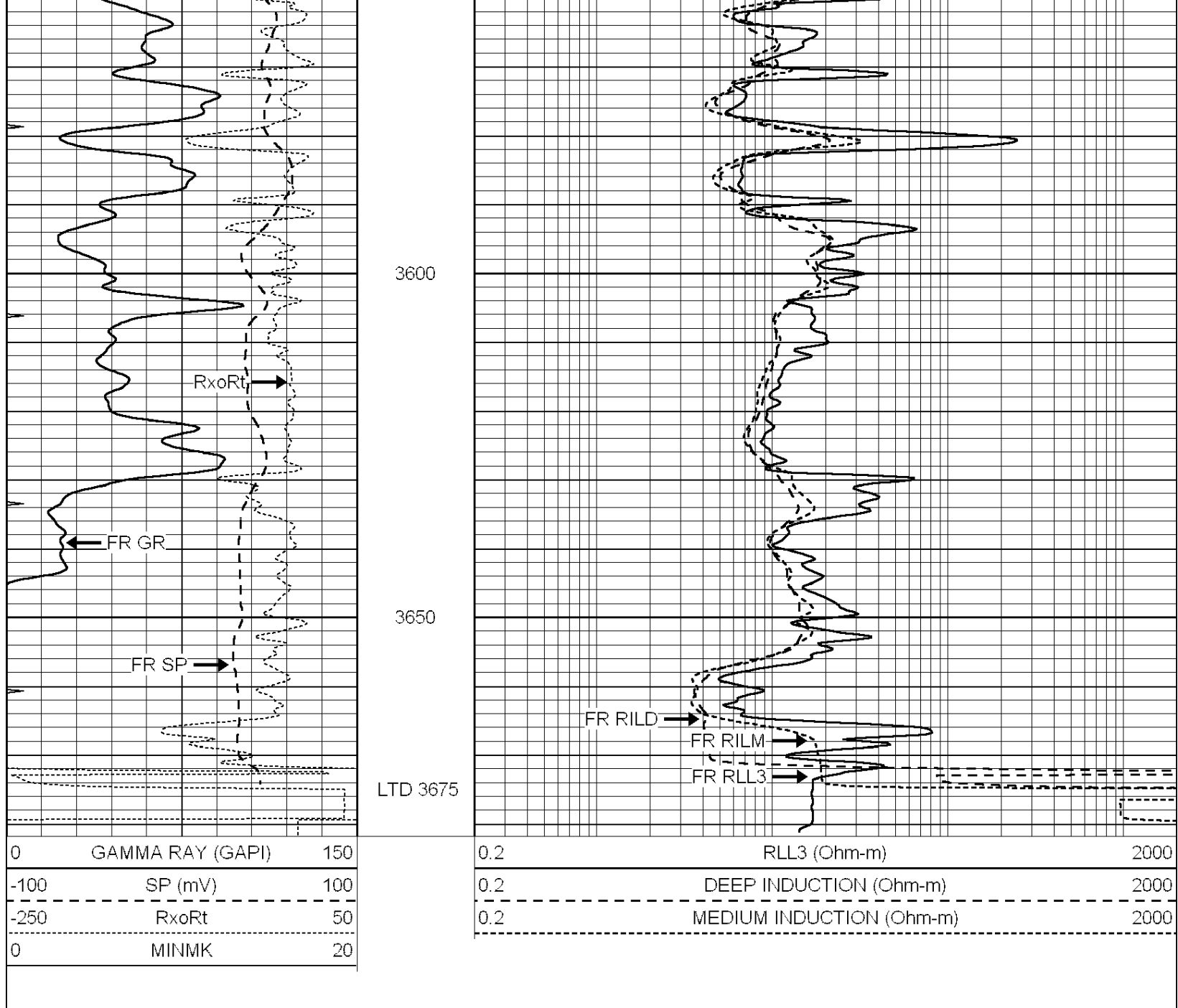
3350

3400

3450

3500

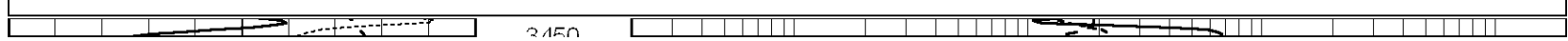
3550

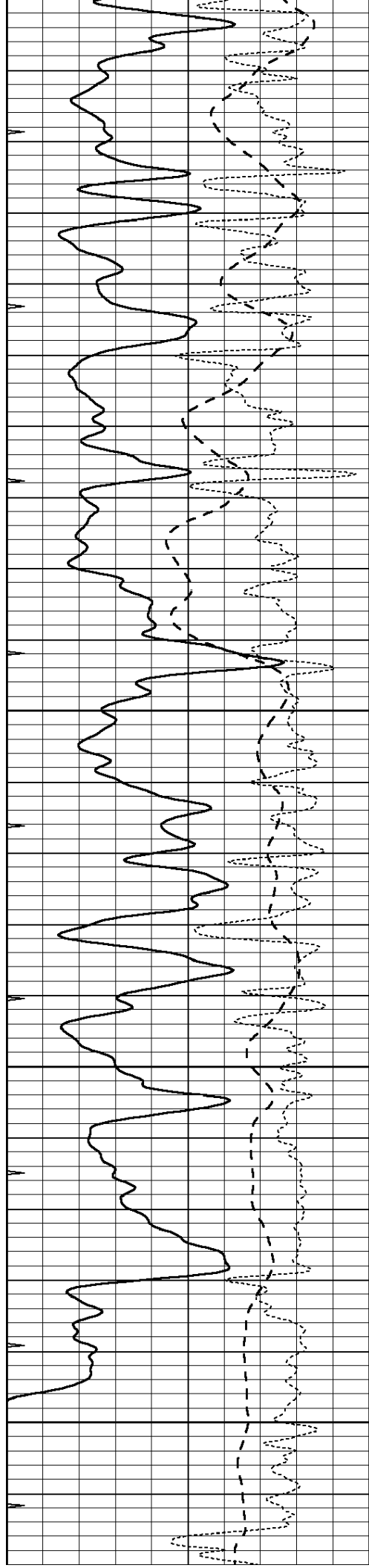


REPEAT SECTION

Database File: 010997ddn.db
 Dataset Pathname: pass2.5
 Presentation Format: _dil
 Dataset Creation: Sun May 05 18:42:36 2013 by Calc Open-Cased 090629
 Charted by: Depth in Feet scaled 1:240

0	GAMMA RAY (GAPI)	150	0.2	RLL3 (Ohm-m)	2000
-100	SP (mV)	100	0.2	DEEP INDUCTION (Ohm-m)	2000
-250	RxoRt	50	0.2	MEDIUM INDUCTION (Ohm-m)	2000
0	MINMK	20			





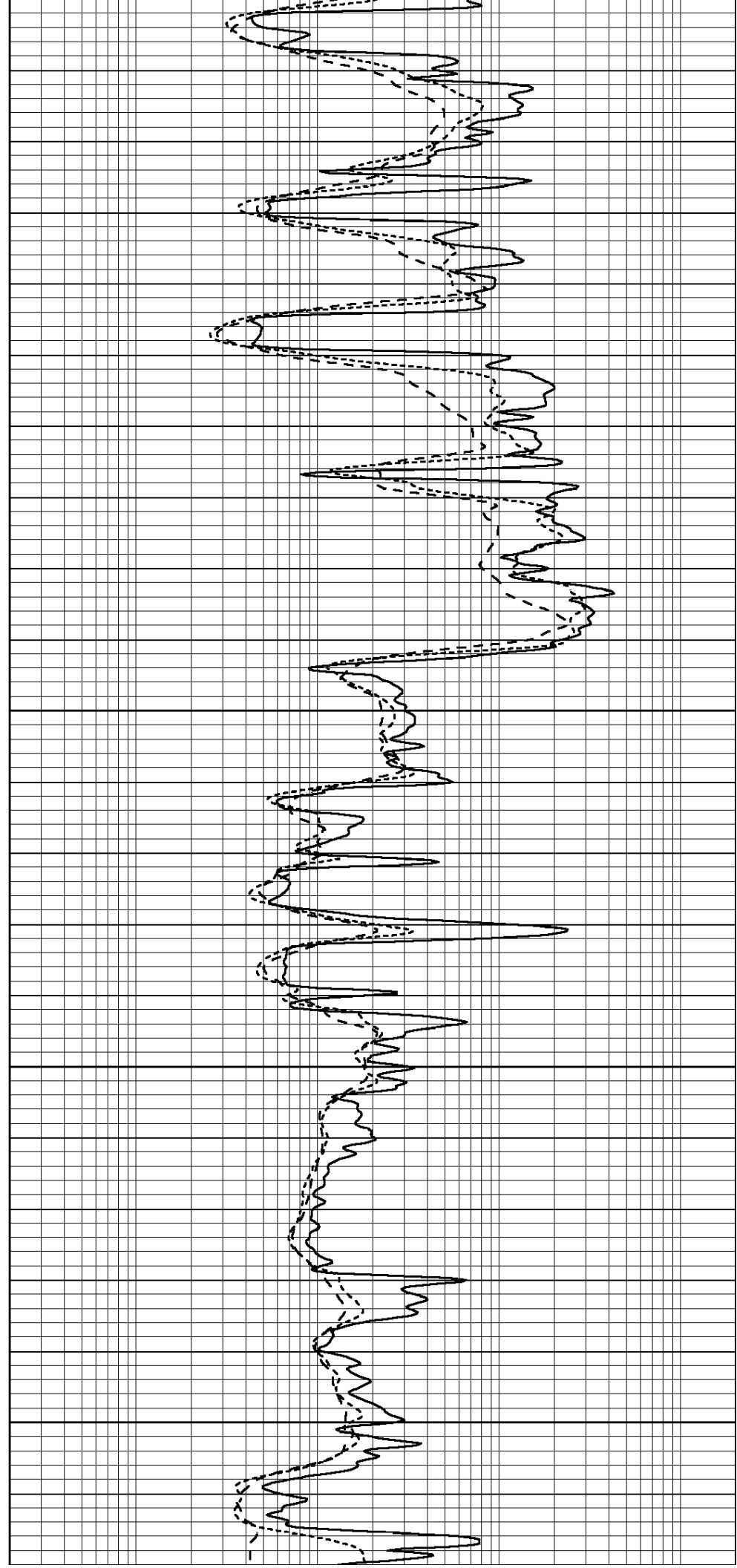
3450

3500

3550

3600

3650



0	GAMMA RAY (GAPI)	150	0.2	RLL3 (Ohm-m)	2000
-100	SP (mV)	100	0.2	DEEP INDUCTION (Ohm-m)	2000
-250	RxoRt	50	0.2	MEDIUM INDUCTION (Ohm-m)	2000
0	MINMK	20			

Calibration Report

Database File: 010997ddn.db
 Dataset Pathname: pass3.3
 Dataset Creation: Sun May 05 19:31:39 2013 by Calc Open-Cased 090629

Dual Induction Calibration Report

Serial-Model: PROBE7-DILG
 Surface Cal Performed: Thu Apr 25 07:54:19 2013
 Downhole Cal Performed: Sat Jan 19 19:51:38 2013
 After Survey Verification Performed: Sat Jan 19 19:51:38 2013

Surface Calibration

Loop:	Readings			References			Results	
	Air	Loop		Air	Loop		m	b
Deep	0.793	0.790	V	0.000	400.000	mmho/m	620.000	4.000
Medium	0.992	1.002	V	0.000	464.000	mmho/m	680.000	-42.000
Internal:	Zero	Cal		Zero	Cal		m	b
Deep	0.041	0.642	V	0.000	400.000	mmho/m	664.874	-27.011
Medium	0.035	0.802	V	0.000	464.000	mmho/m	604.936	-21.367

Downhole Calibration

	Readings			References			Results	
	Zero	Cal		Zero	Cal		m'	b'
Deep	135384.000	27094.500	mmho/m	135400.000	27082.400	mmho/m	1.000	-19.259
Medium	-47330.100	-9381.740	mmho/m	-47327.100	-9389.280	mmho/m	1.000	-10.154
LL3		7.322	V		1400.000	Ohm-m		
		0.038	V		20.000	Ohm-m		
		-7.273	V		4000.000	mmho-m		

After Survey Verification

	Readings			Targets			Results	
	Zero	Cal		Zero	Cal		m'	b'
Deep	0.000	0.000	mmho/m	135384.000	27094.500	mmho/m	1.000	0.000
Medium	0.000	0.000	mmho/m	-47330.100	-9381.740	mmho/m	1.000	0.000
LL3		0.000	Ohm-m		1400.000	Ohm-m		
		0.000	Ohm-m		20.000	Ohm-m		
		0.000	mmho-m		4000.000	mmho-m		

Compensated Density Calibration Report

Serial-Model: GEAR1-GEARHART
 Source / Verifier: 147 / 147
 Master Calibration Performed: Thu Apr 25 08:46:02 2013

Master Calibration

	Density		Far Detector	Near Detector	
Magnesium	1.710	g/cc	1205.77	610.74	cps
Aluminum	2.600	g/cc	271.21	419.72	cps
Spine Angle = 75.89			Density/Spine Ratio = 0.579		
	Size		Reading		
Small Ring	7.60	in	4.69	V	
Large Ring	14.00	in	6.52	V	

Compensated Neutron Calibration Report

Serial Number: NEU_4I
Tool Model: G

CALIBRATION

Detector	Readings		Target		Normalization
Short Space	1.00	cps	1.00	cps	1.0000
Long Space	1.00	cps	1.00	cps	1.0000

Gamma Ray Calibration Report

Serial Number: GR5
Tool Model: OPEN
Performed: Sat May 04 20:42:48 2013

Calibrator Value: 1.0 GAPI

Background Reading: 0.0 cps
Calibrator Reading: 1.0 cps

Sensitivity: 2.9000 GAPI/cps