



**COMPLETION  
& PRODUCTION  
SERVICES CO.**

**MICRO  
LOG**

Company MUSTANG ENERGY CORPORATION  
Well WERTH #1-5  
Field BIG TIMBER  
County RUSH State KANSAS

Location: API #: 15-165-22023-00-00

Other Services

SEC 5 TWP 16S RGE 18W  
1980' FSL & 330' FWL  
W2 - NW - SW

MEL

Permanent Datum GROUND LEVEL Elevation 2026  
Log Measured From KELLY BUSHING 8' A.G.L.  
Drilling Measured From KELLY BUSHING

Elevation  
K.B. 2034  
D.F. 2032  
G.L. 2026

Date	5/5/13		
Run Number	TW0		
Depth Driller	3675		
Depth Logger	3675		
Bottom Logged Interval	3673		
Top Log Interval	2900		
Casing Driller	1203		
Casing Logger	1200		
Bit Size	7.875		
Type Fluid in Hole	CHEMICAL MUD	CHLORIDES 5.000	
Density / Viscosity	9.20 / 52		
pH / Fluid Loss	9.00 / 8.8		
Source of Sample	FLOWLINE		
Rim @ Meas. Temp	0.65 @ 70F		
Rmf @ Meas. Temp	0.49 @ 70F		
Rmc @ Meas. Temp	0.78 @ 70F		
Source of Rmf / Rmc	MEASURED		
Rim @ BHT	0.40 @ 113F		
Time Circulation Stopped	2 HOURS		
Time Logger on Bottom			
Maximum Recorded Temperature	113F		
Equipment Number	860		
Location	HAYS, KS.		
Recorded By	IAN MABB		
Witnessed By	HERB DEINES		

<<< Fold Here >>>

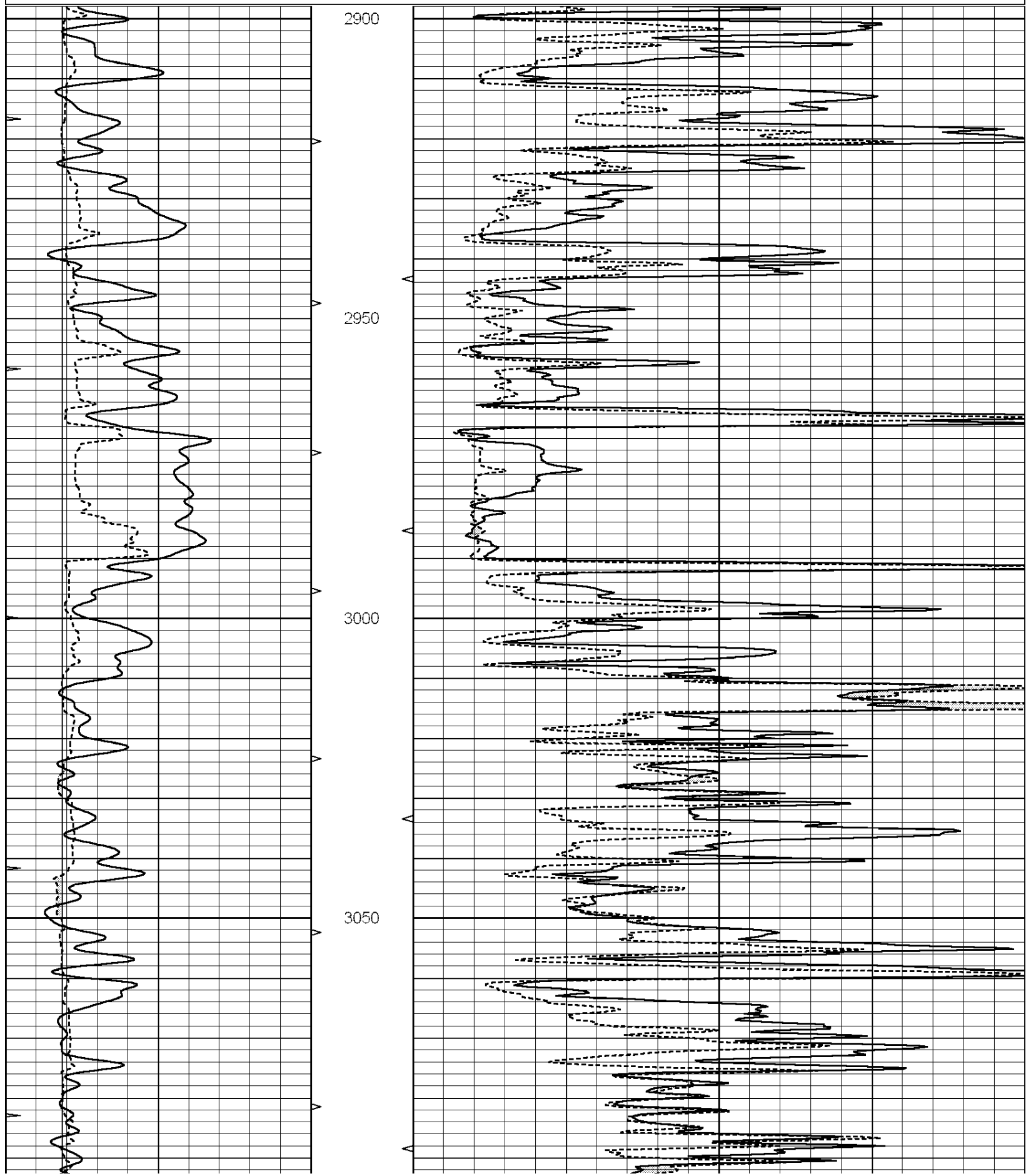
All interpretations are opinions based on inferences from electrical or other measurements and we cannot and do not guarantee the accuracy or correctness of any interpretation, and we shall not, except in the case of gross or willful negligence on our part, be liable or responsible for any loss, costs, damages, or expenses incurred or sustained by anyone resulting from any interpretation made by any of our officers, agents or employees. These interpretations are also subject to our general terms and conditions set out in our current Price Schedule.

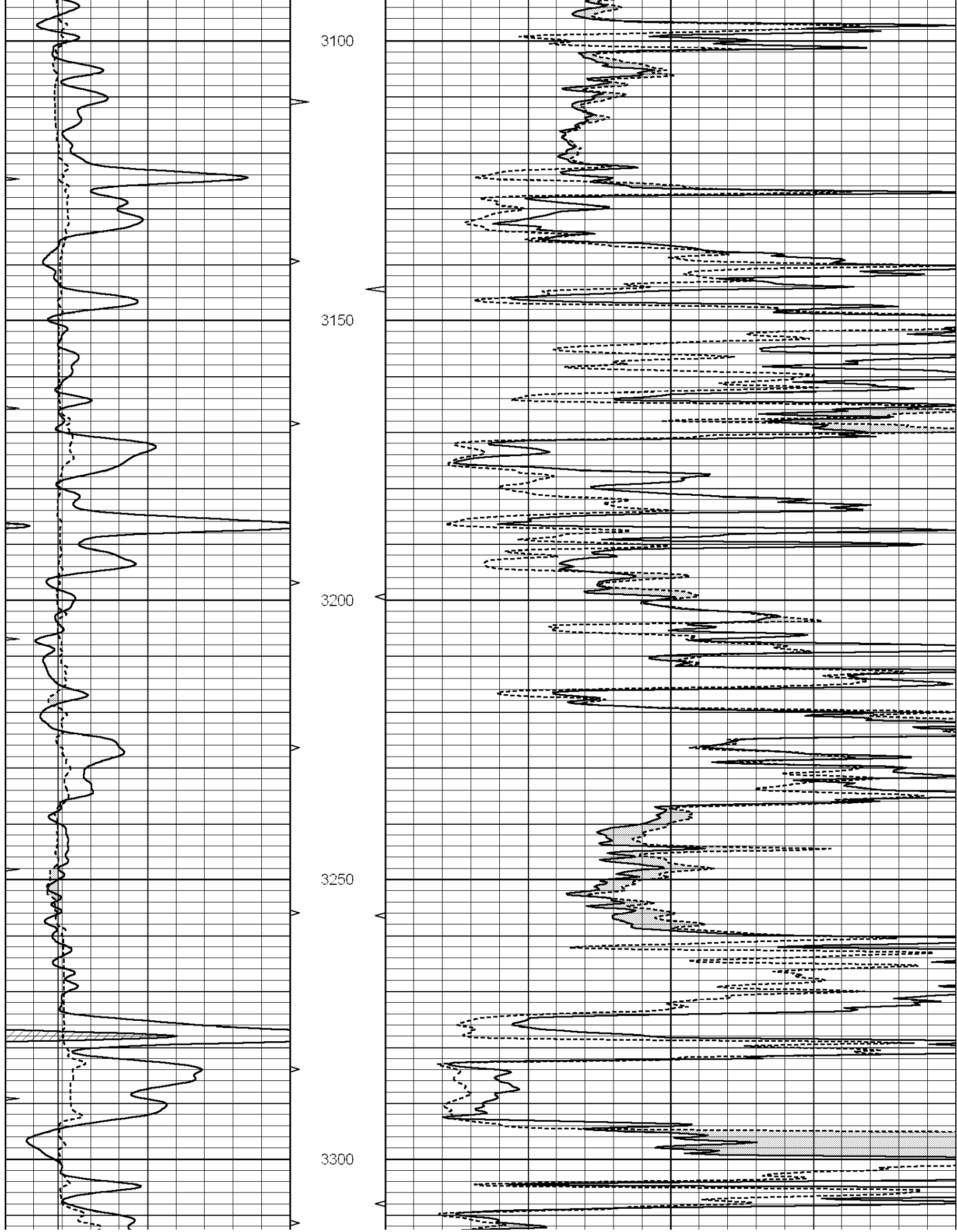
Comments

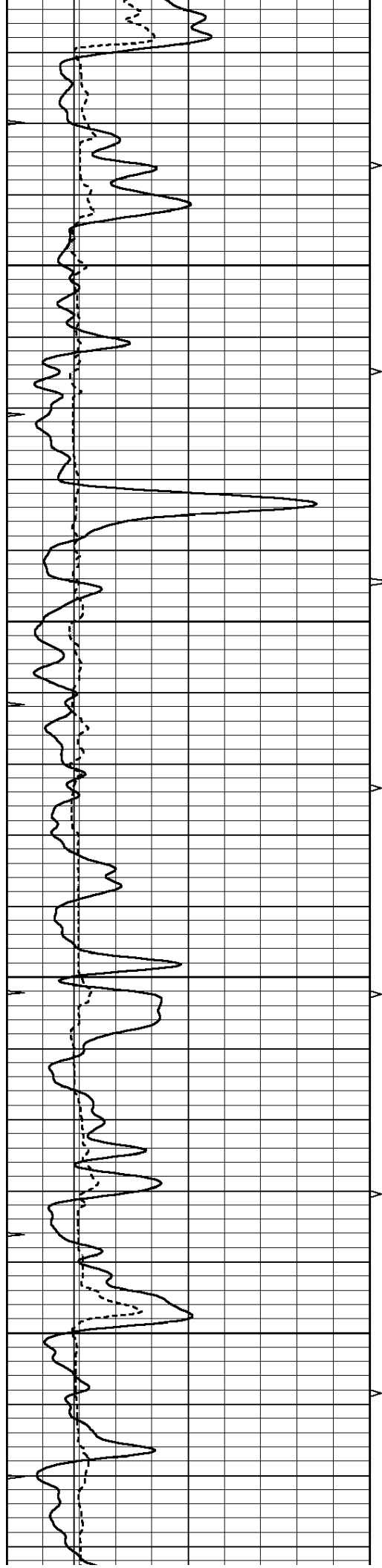
NABORS COMPLETION & PRODUCTION SERVICES  
785-628-6395  
THANK YOU FOR YOUR BUSINESS  
DIRECTIONS: SCHOENCHEN, KS. - SOUTH TO AVE A. - 1 WEST - 1/2 SOUTH EAST INTO

0	GAMMA RAY (GAPI)	150
6	MELCAL (in)	16
0	MINMK	20

0	MEL1.5 (Ohm-m)	40
0	MEL2.0 (Ohm-m)	40





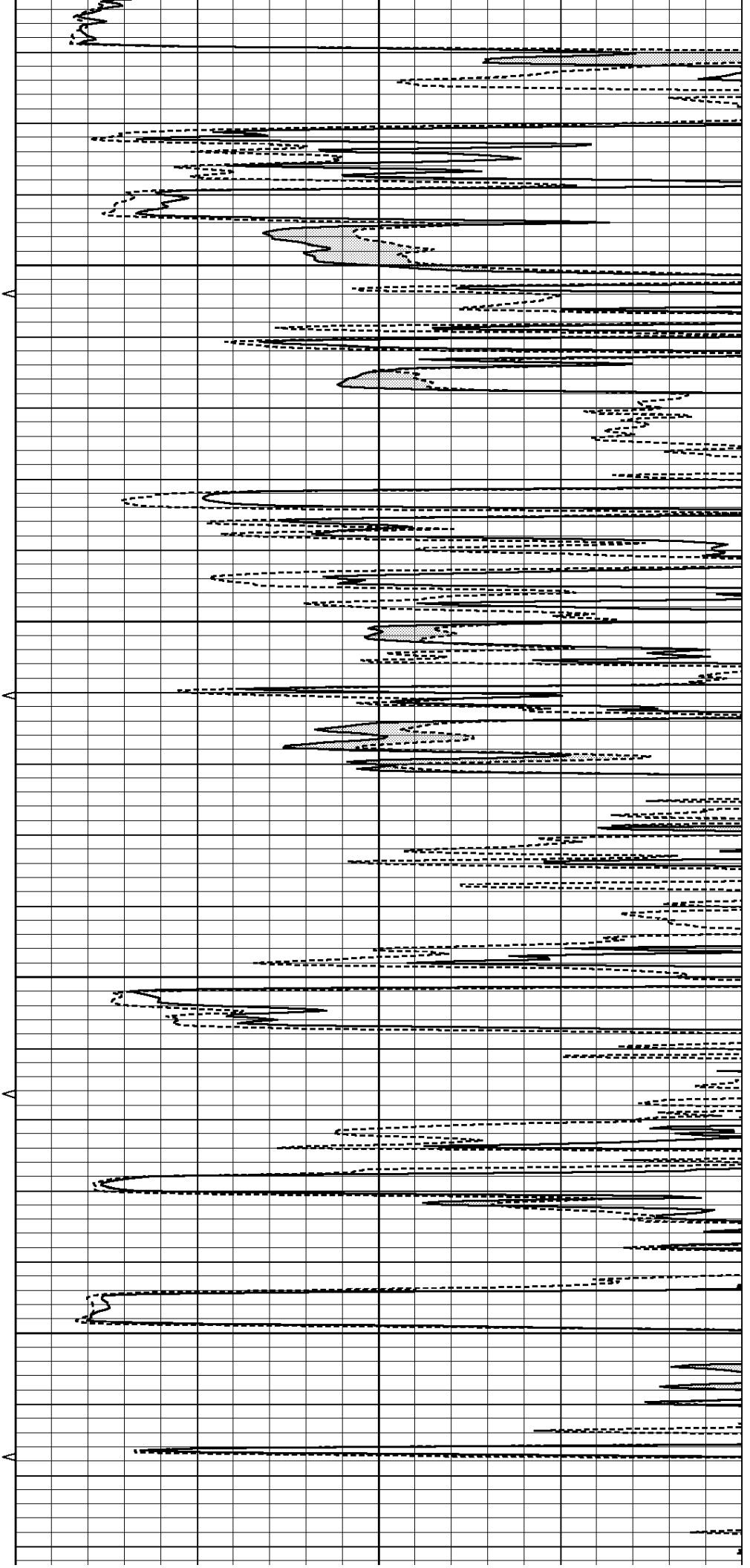


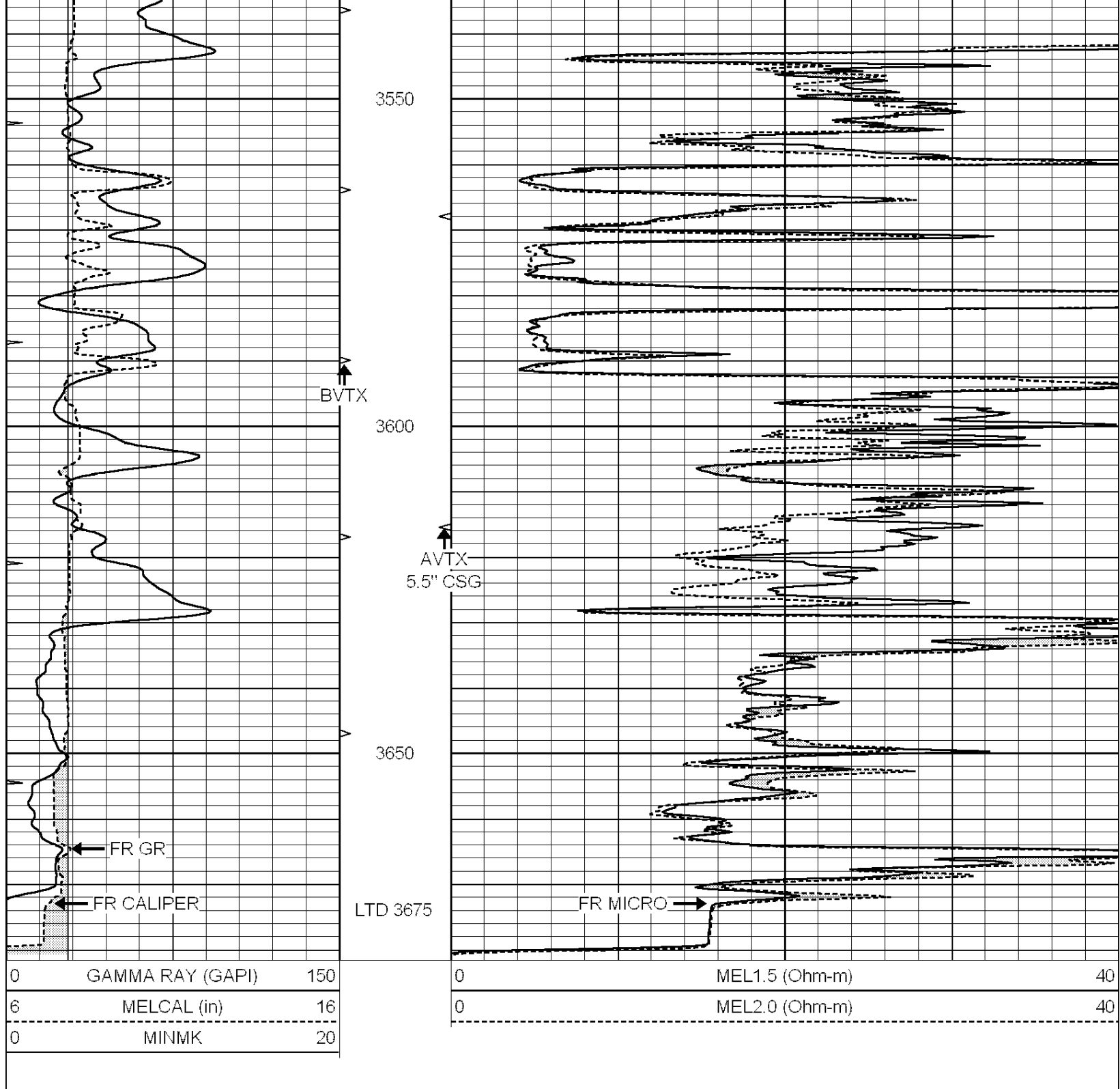
3350

3400

3450

3500





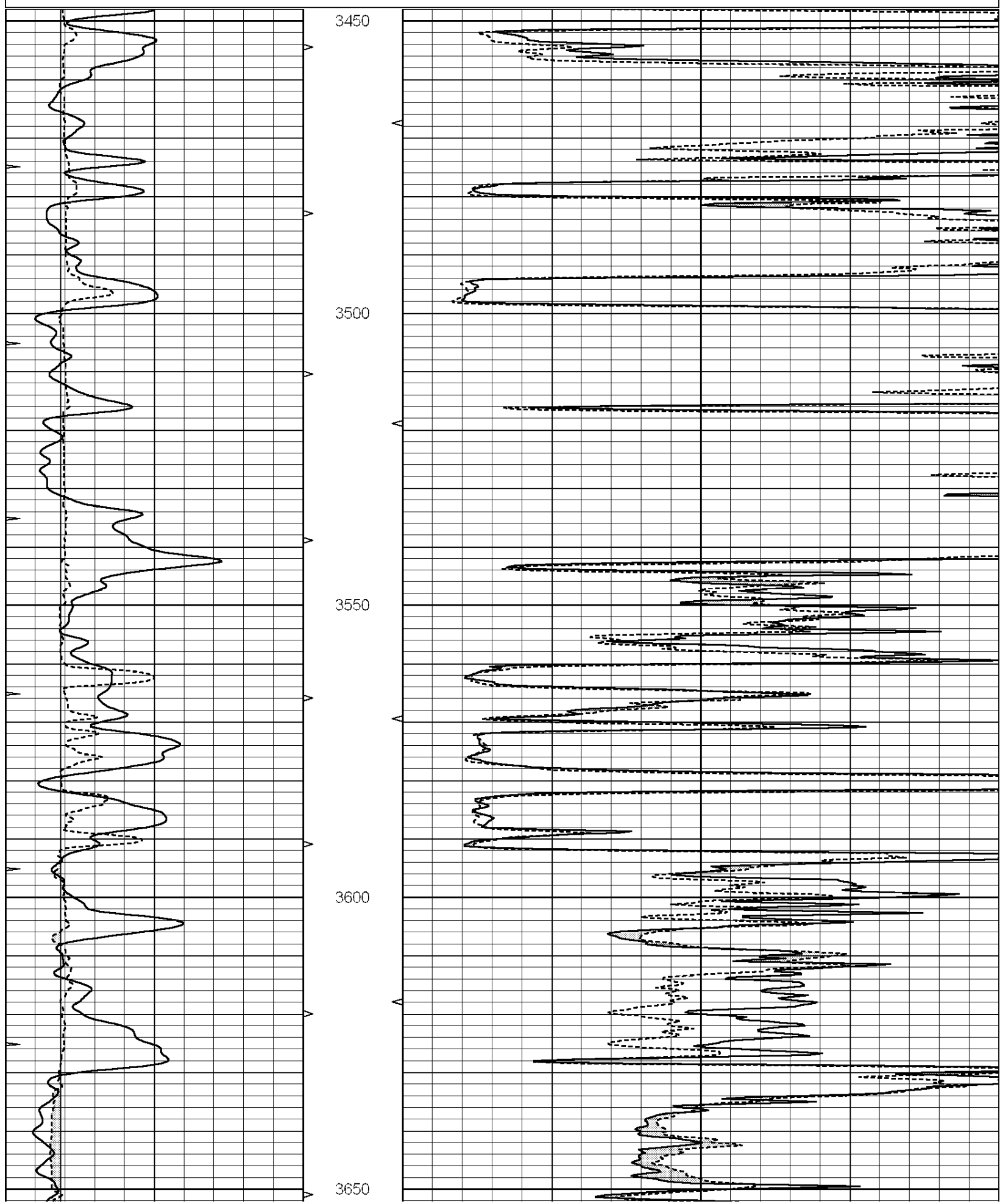
# REPEAT SECTION

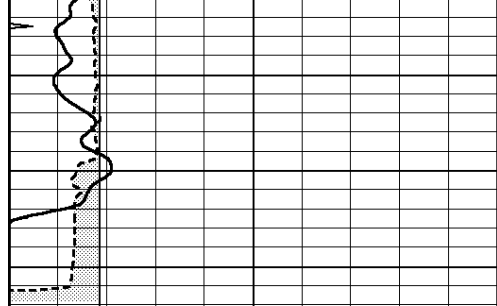
Database File: 010997ddn.db  
 Dataset Pathname: pass5.1  
 Presentation Format: \_micro  
 Dataset Creation: Sun May 05 20:19:06 2013 by Calc Open-Cased 090629  
 Charted by: Depth in Feet scaled 1:240

0	GAMMA RAY (GAPI)	150	0	MEL1.5 (Ohm-m)	40
---	------------------	-----	---	----------------	----

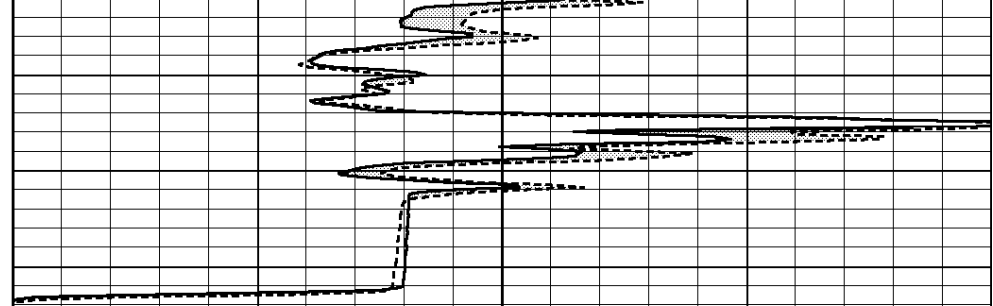
6 MELCAL (in) 16  
0 MINMK 20

0 MEL2.0 (Ohm-m) 40





0	GAMMA RAY (GAPI)	150
6	MELCAL (in)	16
0	MINMK	20



0	MEL1.5 (Ohm-m)	40
0	MEL2.0 (Ohm-m)	40

### Calibration Report

Database File: 010997ddn.db  
 Dataset Pathname: pass6.1  
 Dataset Creation: Sun May 05 20:43:15 2013 by Calc Open-Cased 090629

#### MICRO Calibration Report

Serial Number:	MICRO4	
Tool Model:	PROBE	
Performed:	Tue Apr 23 16:01:43 2013	
Caliper Calibration:	Gain=2.725	Offset=-6.914
References	Low Cal 8.500	High Cal 14.000
Readings	5.584	7.602
1.5" Calibration:	Gain=40.000	Offset=0.000
References	Low Cal 0.000	High Cal 20.000
Readings	0.009	1.541
2" Calibration:	Gain=45.000	Offset=0.000
References	Low Cal 0.000	High Cal 20.000
Readings	0.004	1.198

#### Gamma Ray Calibration Report

Serial Number:	GR5	
Tool Model:	OPEN	
Performed:	Sat May 04 20:42:48 2013	
Calibrator Value:	1.0	GAPI
Background Reading:	0.0	cps
Calibrator Reading:	1.0	cps
Sensitivity:	1.3000	GAPI/cps