



Sector Bond / Gamma Ray  
CCL Log

15-159-19248-00-01

API No.

Company Gilbert & Stewart Operating, LLC.  
Well Purcell 'A' No. 1 'OWWO'  
Field Chase-Silica  
County Rice State Kansas

Location 330' FNL & 2350' FEL  
NW-NW-NE

Sec: 28 Twp: 19S Rge: 9W

Permanent Datum Ground Level Elevation 1709  
Log Measured From Kelly Bushing 8 Ft. Above Perm. Datum  
Drilling Measured From Kelly Bushing

Other Services  
Mast Trailer  
Elevation  
K.B. 1717  
D.F.  
G.L. 1709

Run Number	One
Date Survey	7/25/2012
Date Cementing	8/10/2012
Type Cementing Operation	Primary
Depth Driller	3806
Depth Logger	3311
Logged Interval	3309 to 0
Casing Driller	5.5 @ T.D.
Float Collar -- D.V. Tool	@
Squeeze Depth	
Amount & Type Cement	
Amount & Type Admix	
Type Fluid In Hole	Water
Fluid Level	Full
Salinity PPM CL	
Weight lb/gal -- Vis.	
Approx. Logged Cement Top	970
Calculated Cement Top	
Max. Hole Temperature	114
Tool No.	R-1
Spacing Recorded	3-5
Equipment -- Location	72 Hays
Recorded By	K. Ladrigan
Witnessed By	Kelly Branum

<<< Fold Here >>>

All interpretations are opinions based on inferences from electrical or other measurements and we cannot and do not guarantee the accuracy or correctness of any interpretation, and we shall not, except in the case of gross or willful negligence on our part, be liable or responsible for any loss, costs, damages, or expenses incurred or sustained by anyone resulting from any interpretation made by any of our officers, agents or employees. These interpretations are also subject to our general terms and conditions set out in our current Price Schedule.

Comments

Thank you for using LOG TECH, INC. 785.625.3858

Chase, KS., 2 North to K Road,  
1.5 East, South Into.



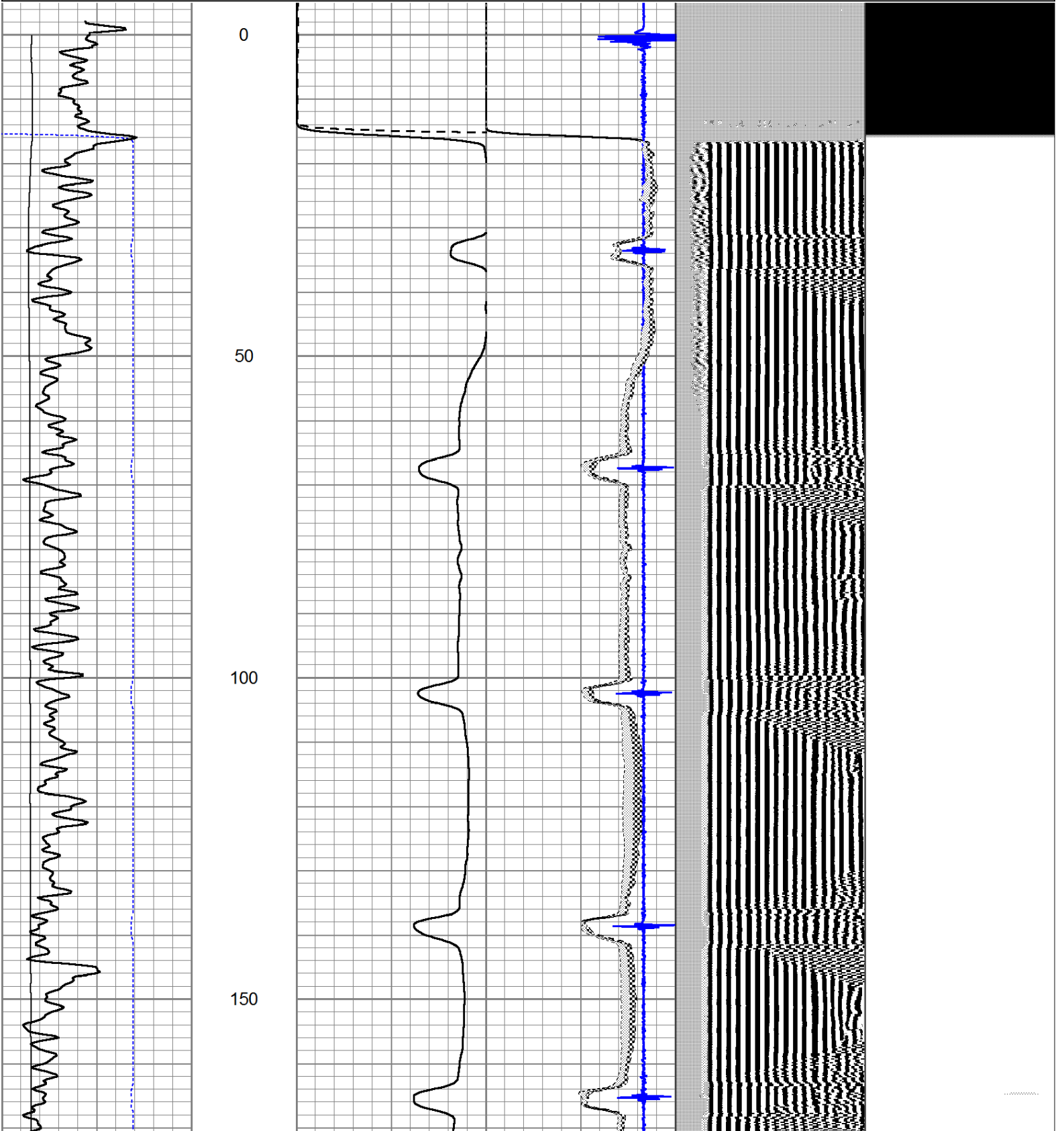
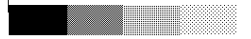
Main Pass

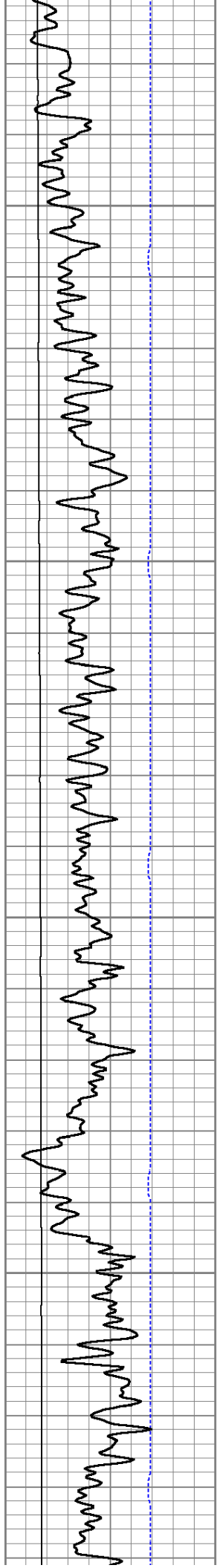
Database File: gilbert-stewart-purcella1owwo.db  
 Dataset Pathname: PurcellA1/sgrcbl/pass3.1  
 Presentation Format: scbl02  
 Dataset Creation: Fri Aug 10 12:27:20 2012  
 Charted by: Depth in Feet scaled 1:240

750	TT (usec)	70
0	GR	150
0	LTEN (lb)	2000

0	AMP (mV)	100	0	AMPAVG	150
0	AMPx5 (mV)	20	0	AMPMAX	150
0			0	AMPMIN	150
5	CCL				-1

200 VDL 1200 1 Cement Map 8  
 25 75



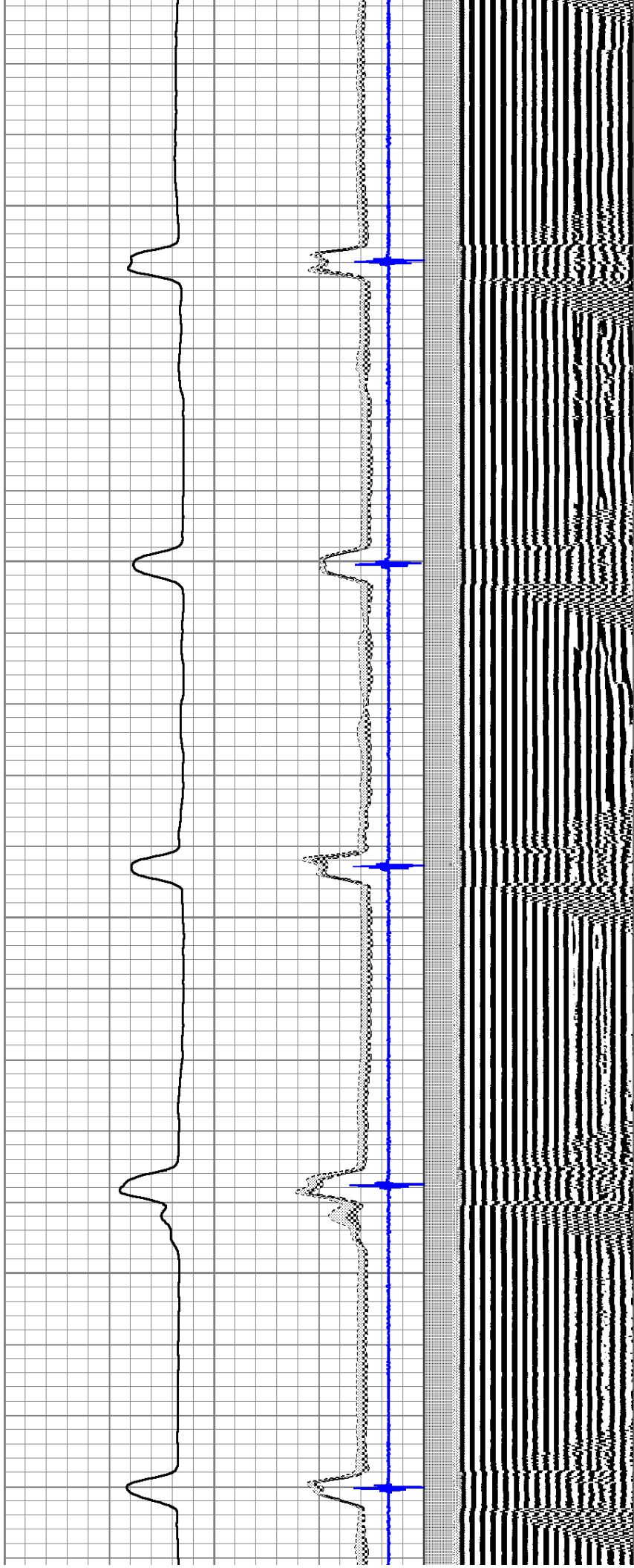


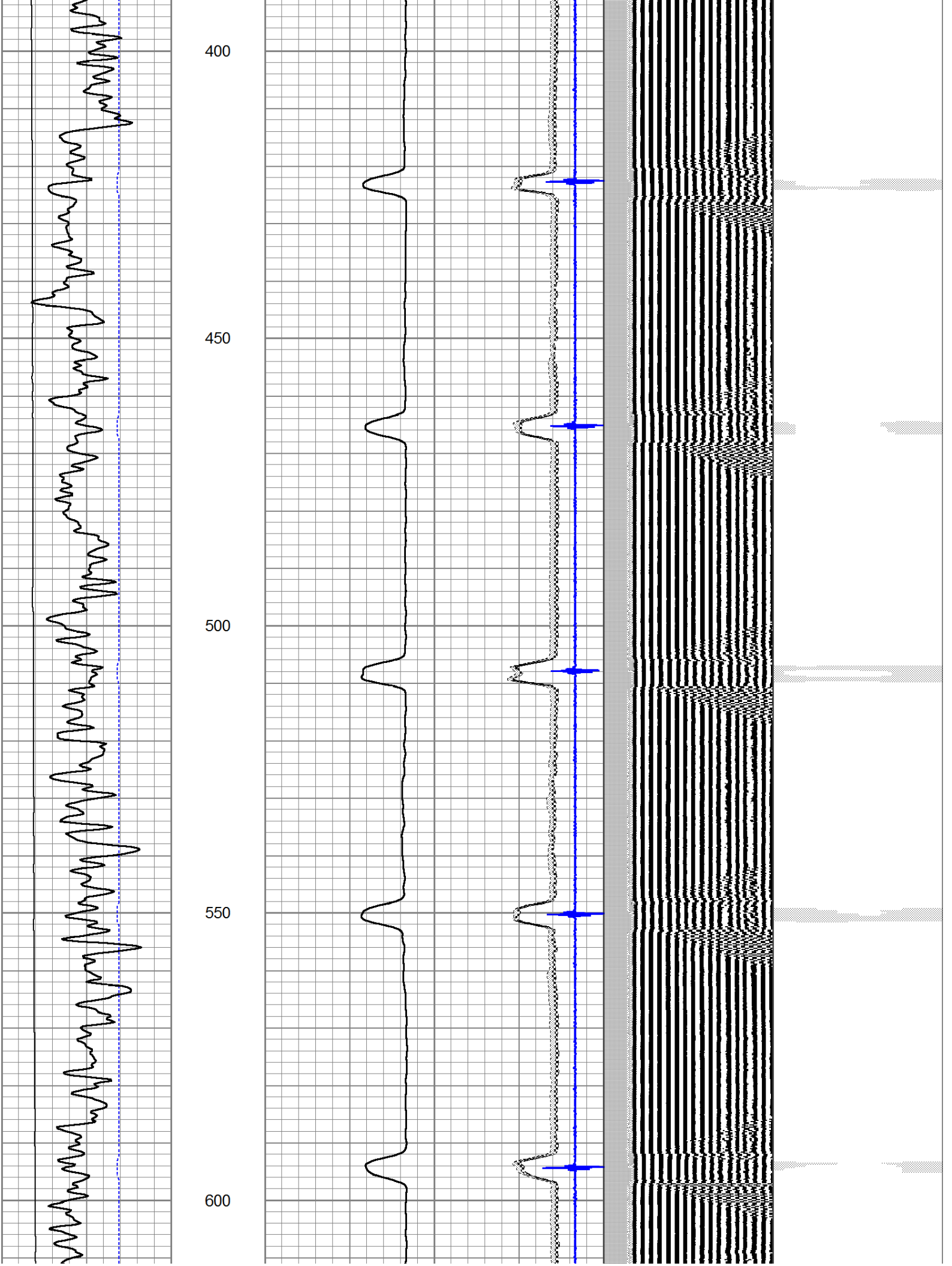
200

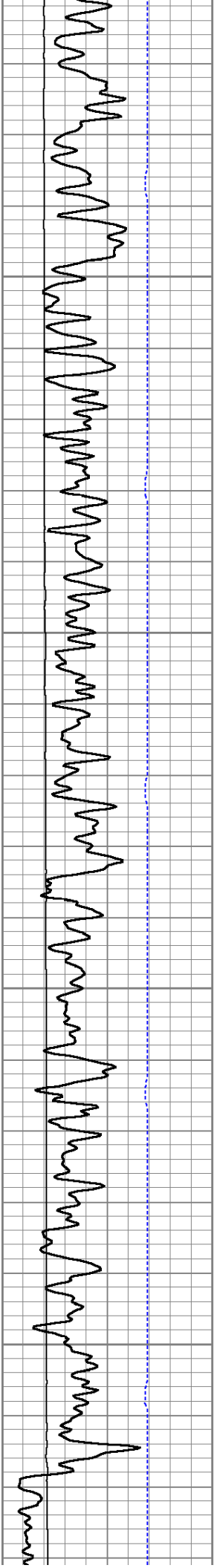
250

300

350





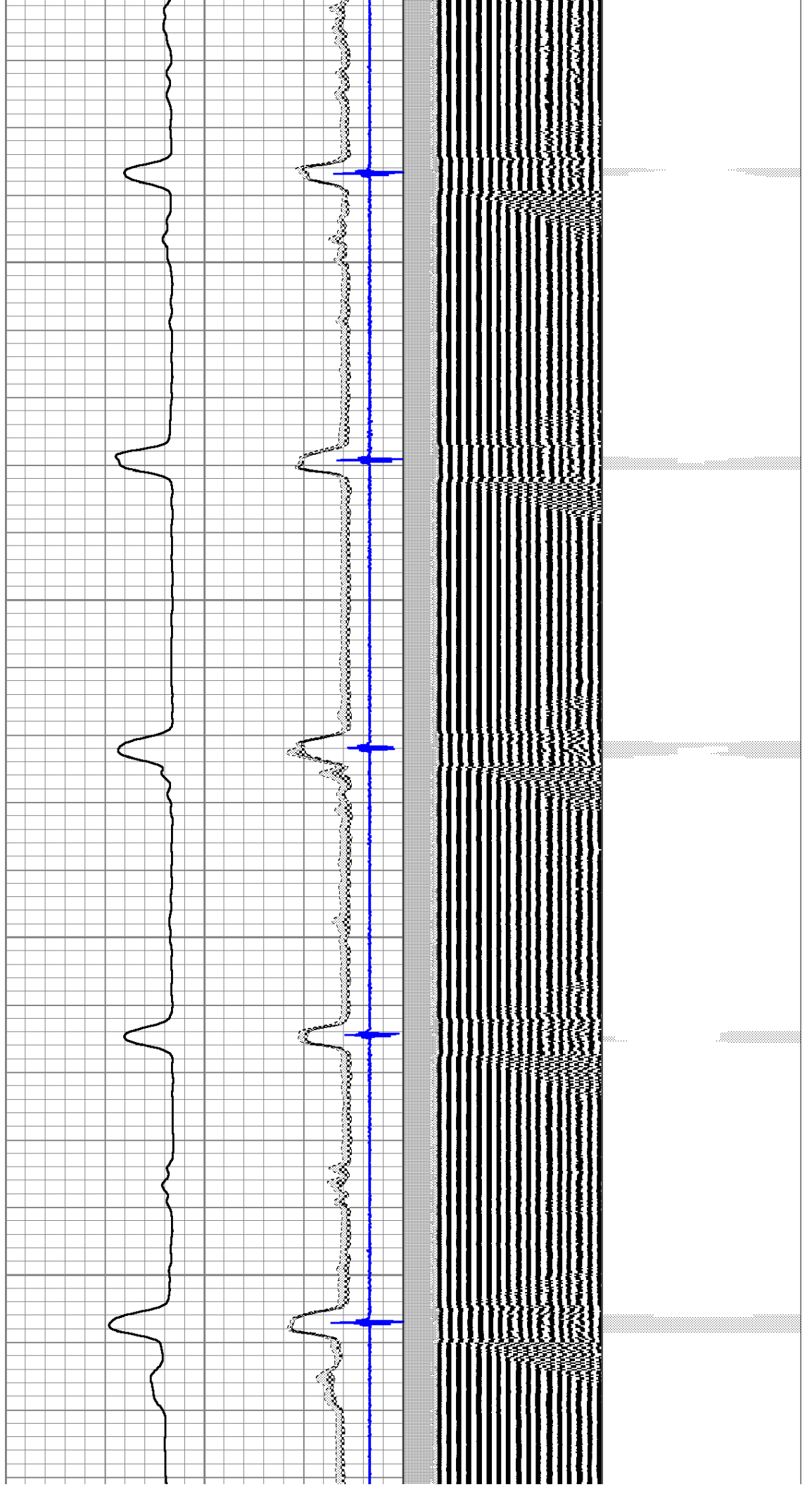


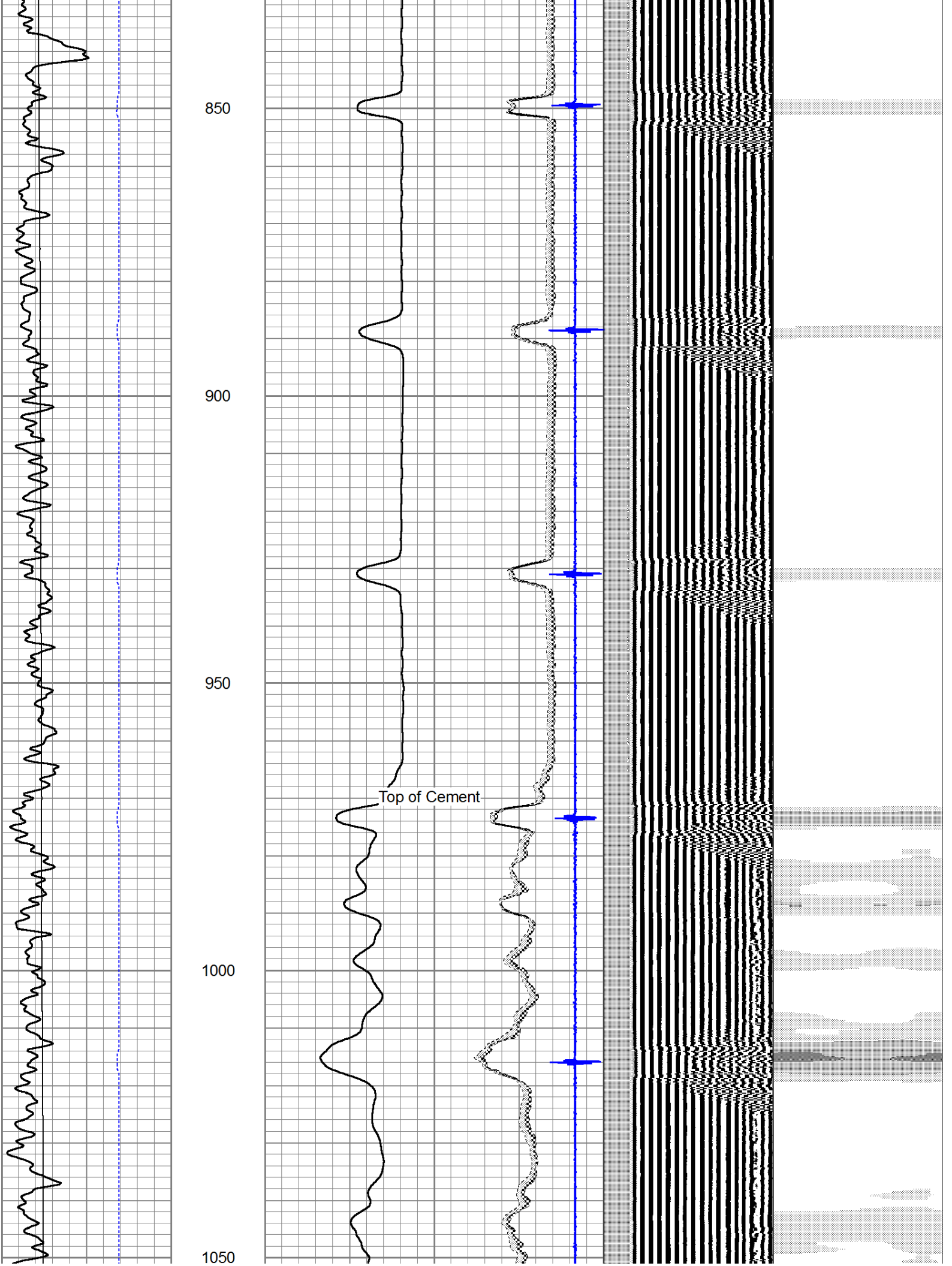
650

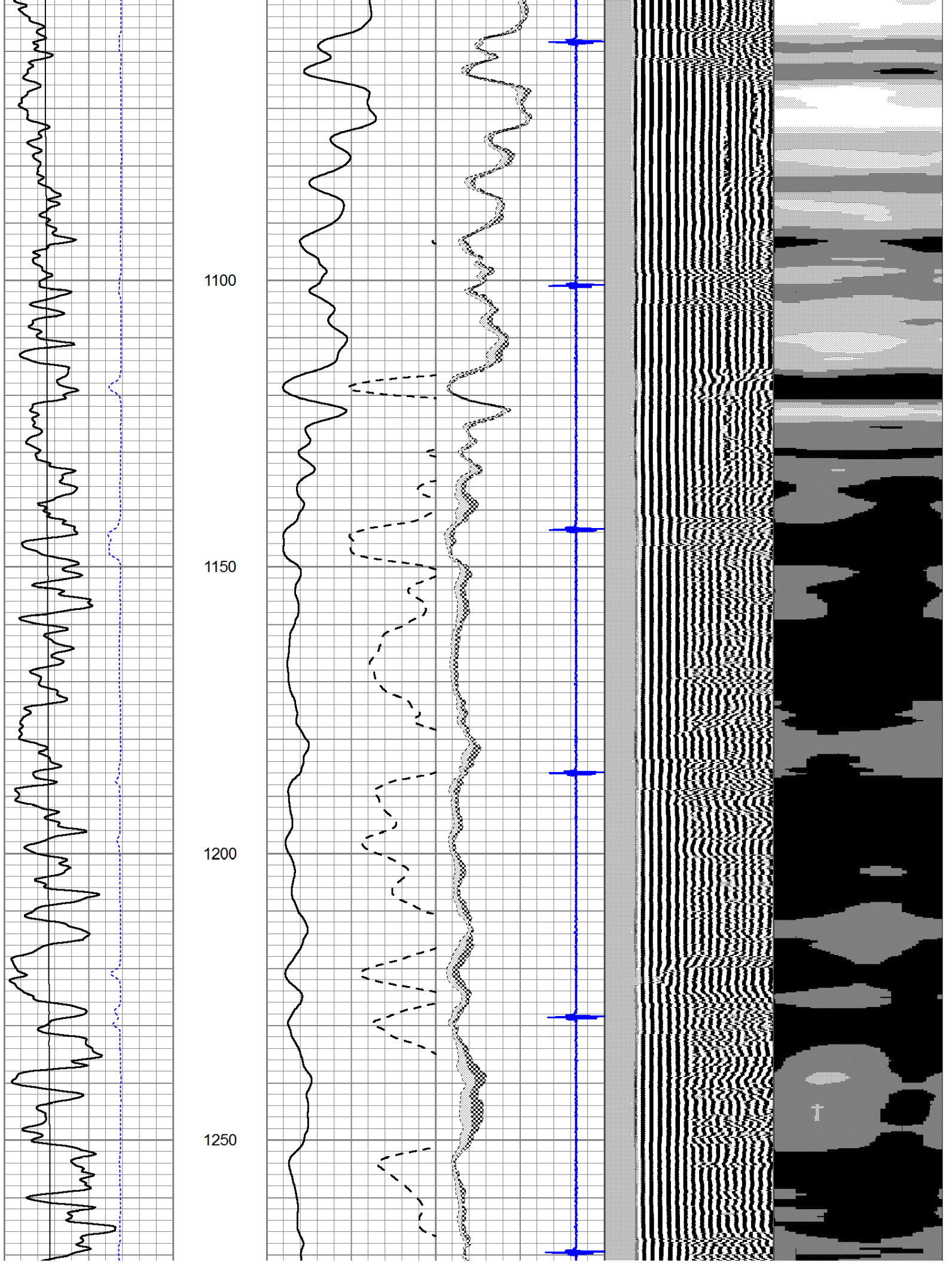
700

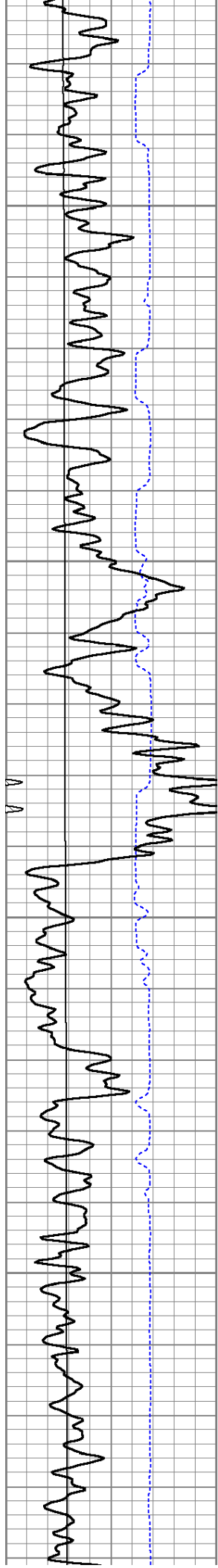
750

800







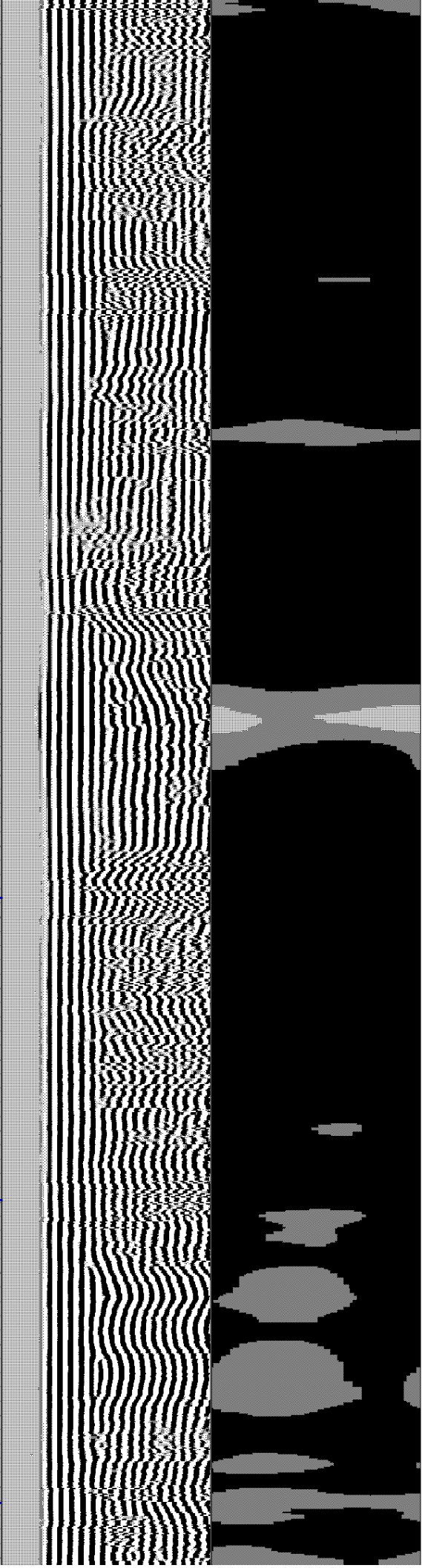
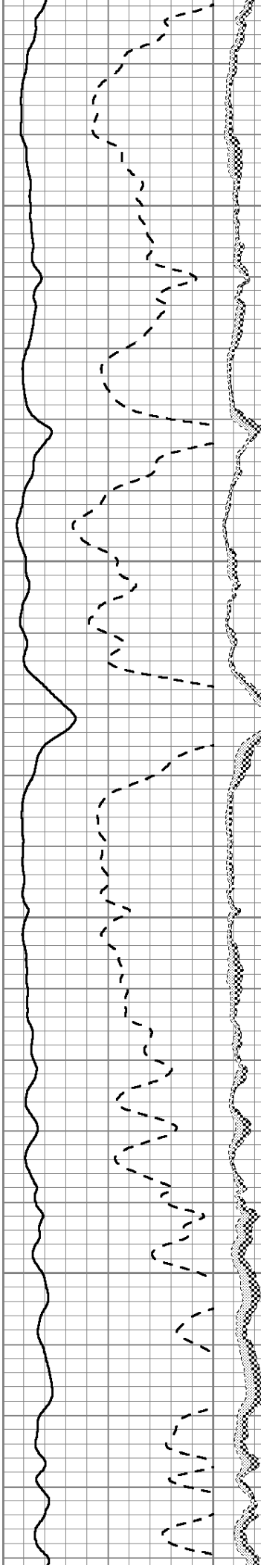


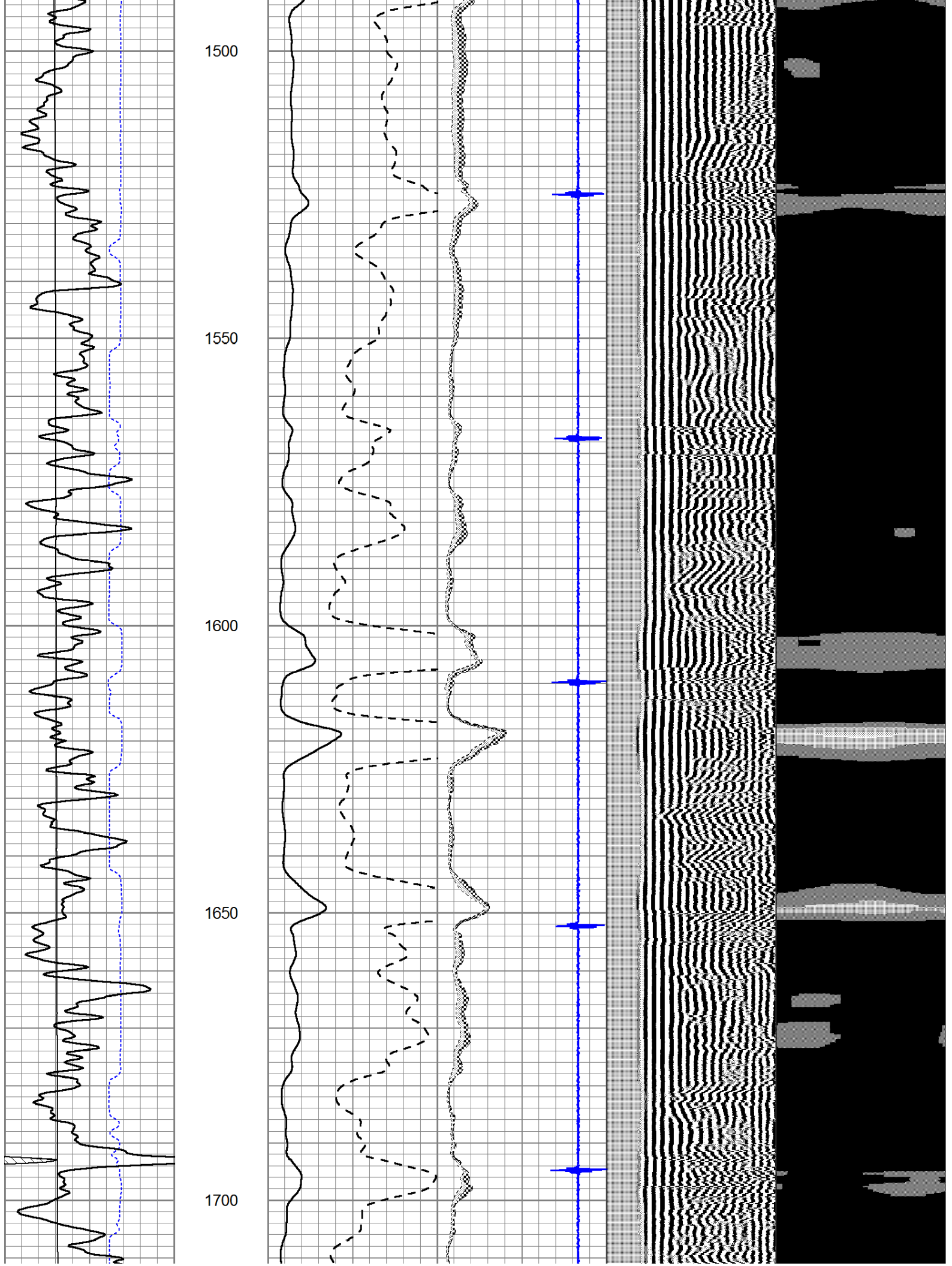
1300

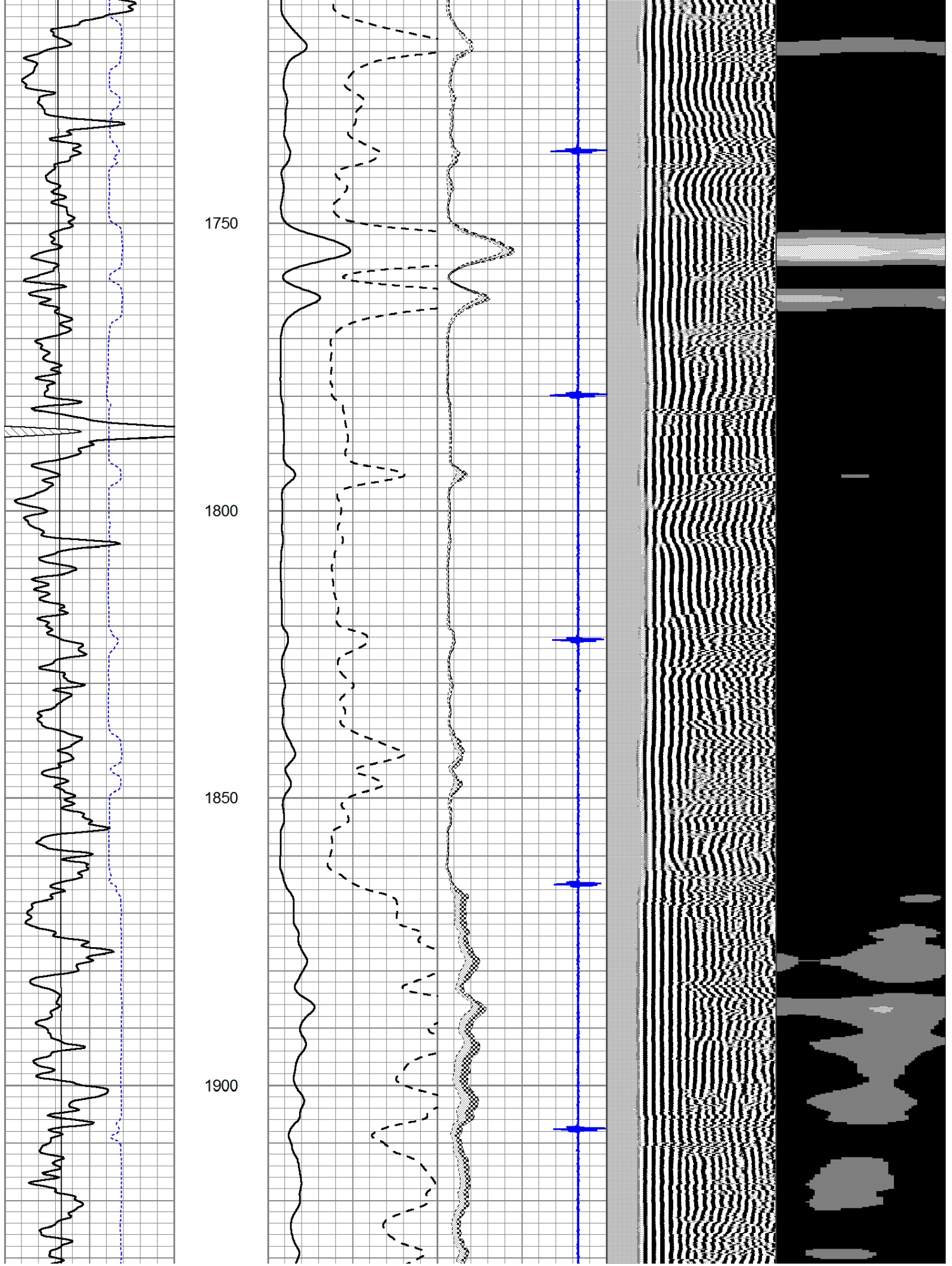
1350

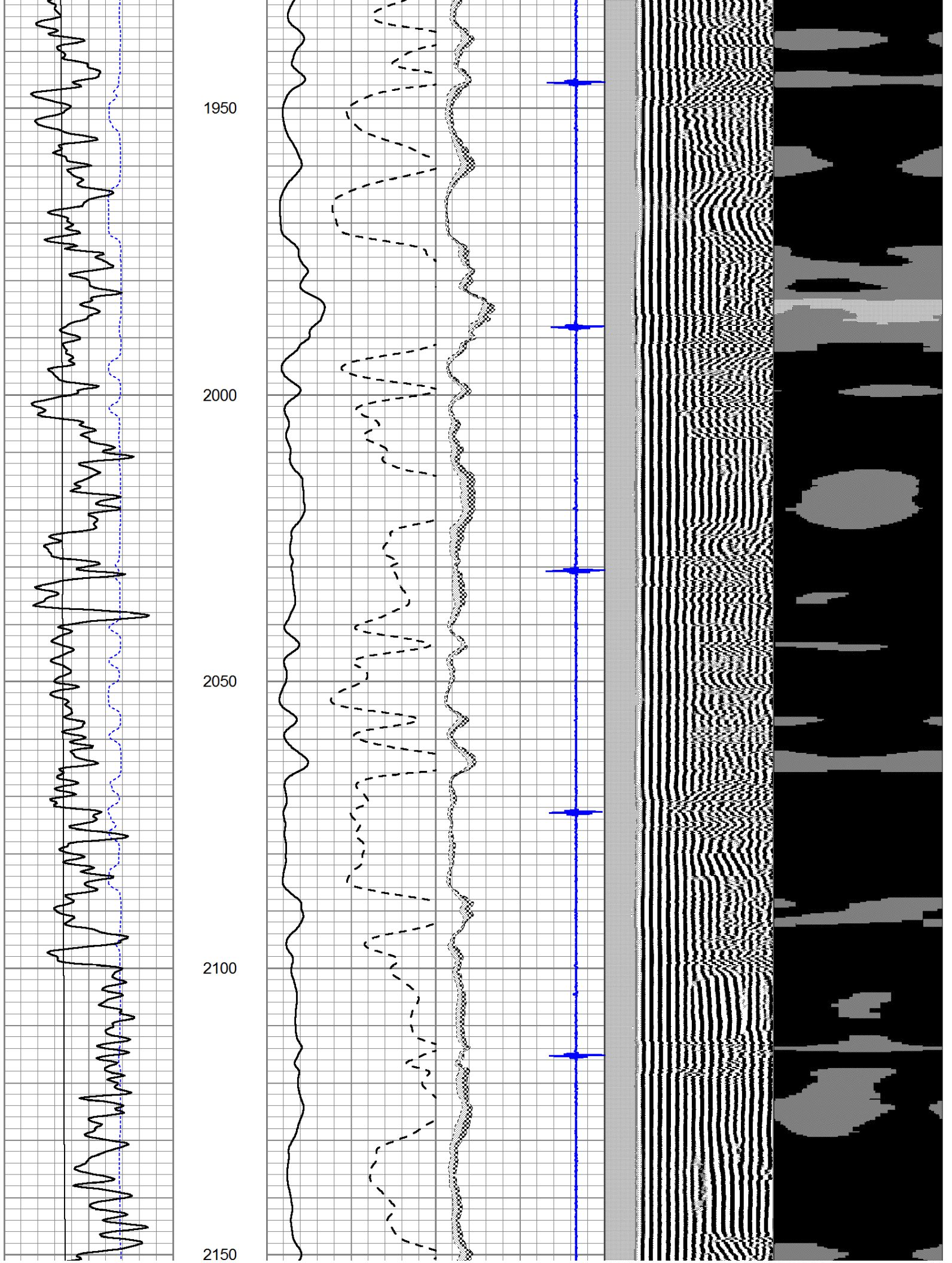
1400

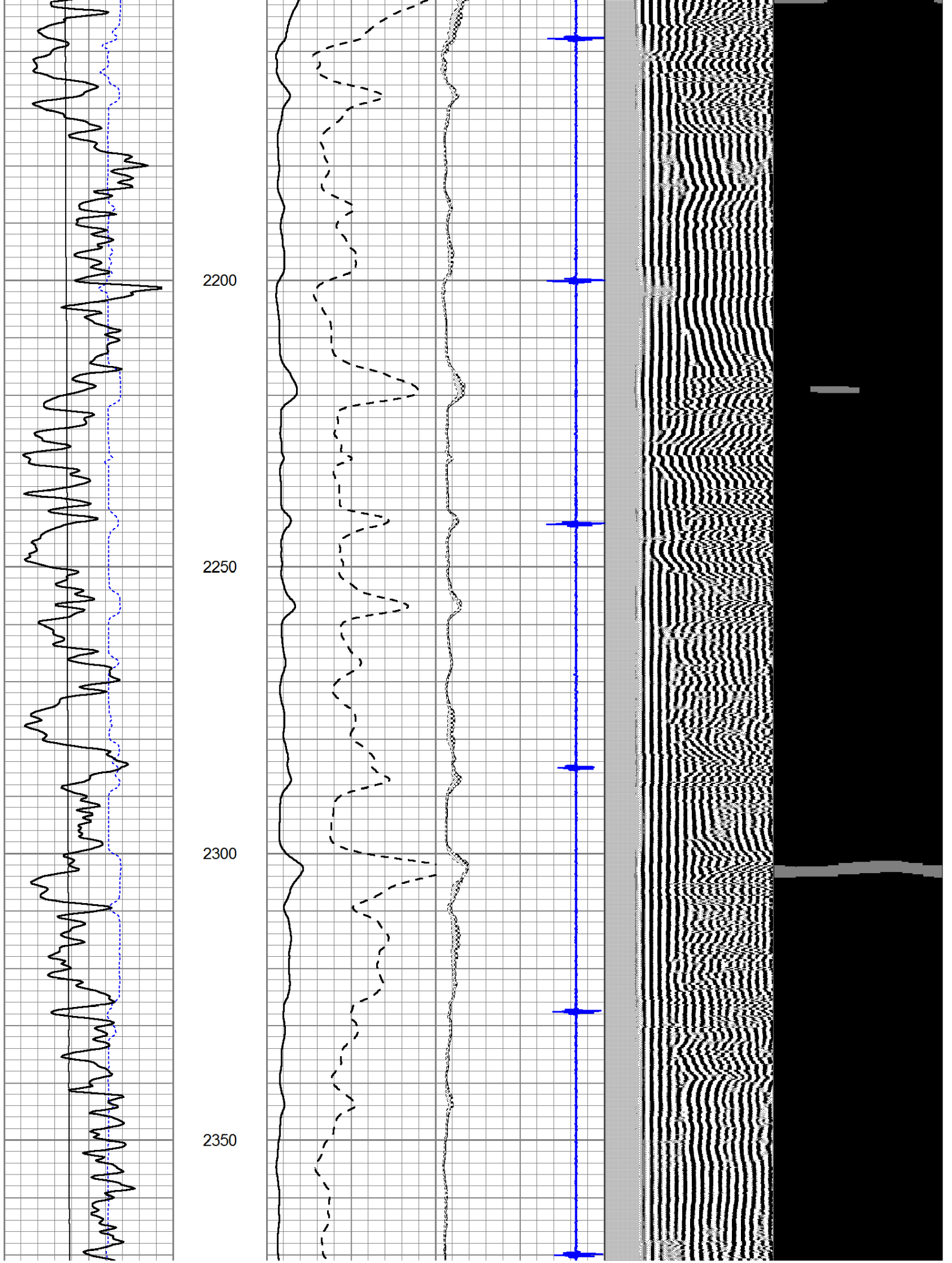
1450

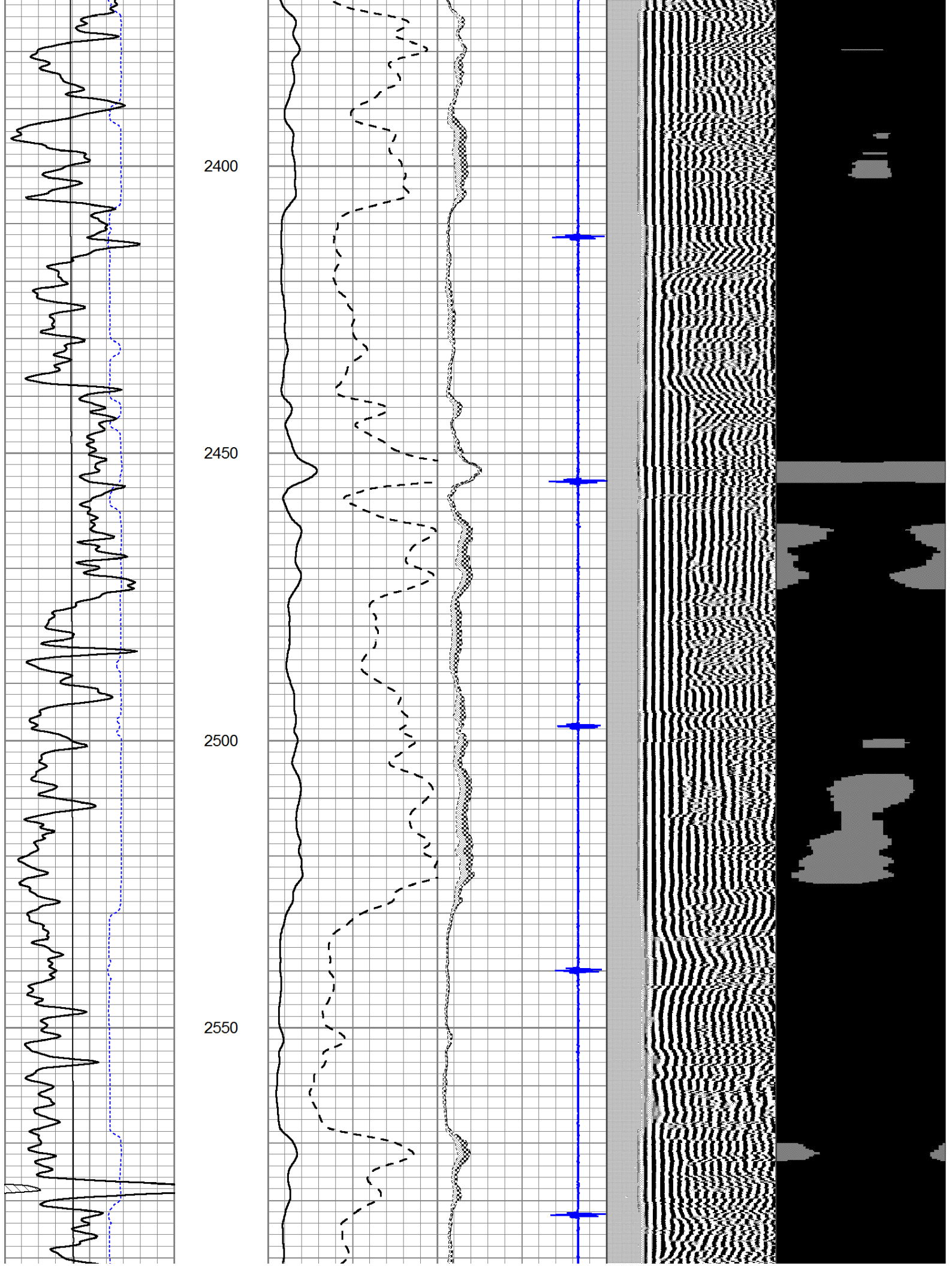


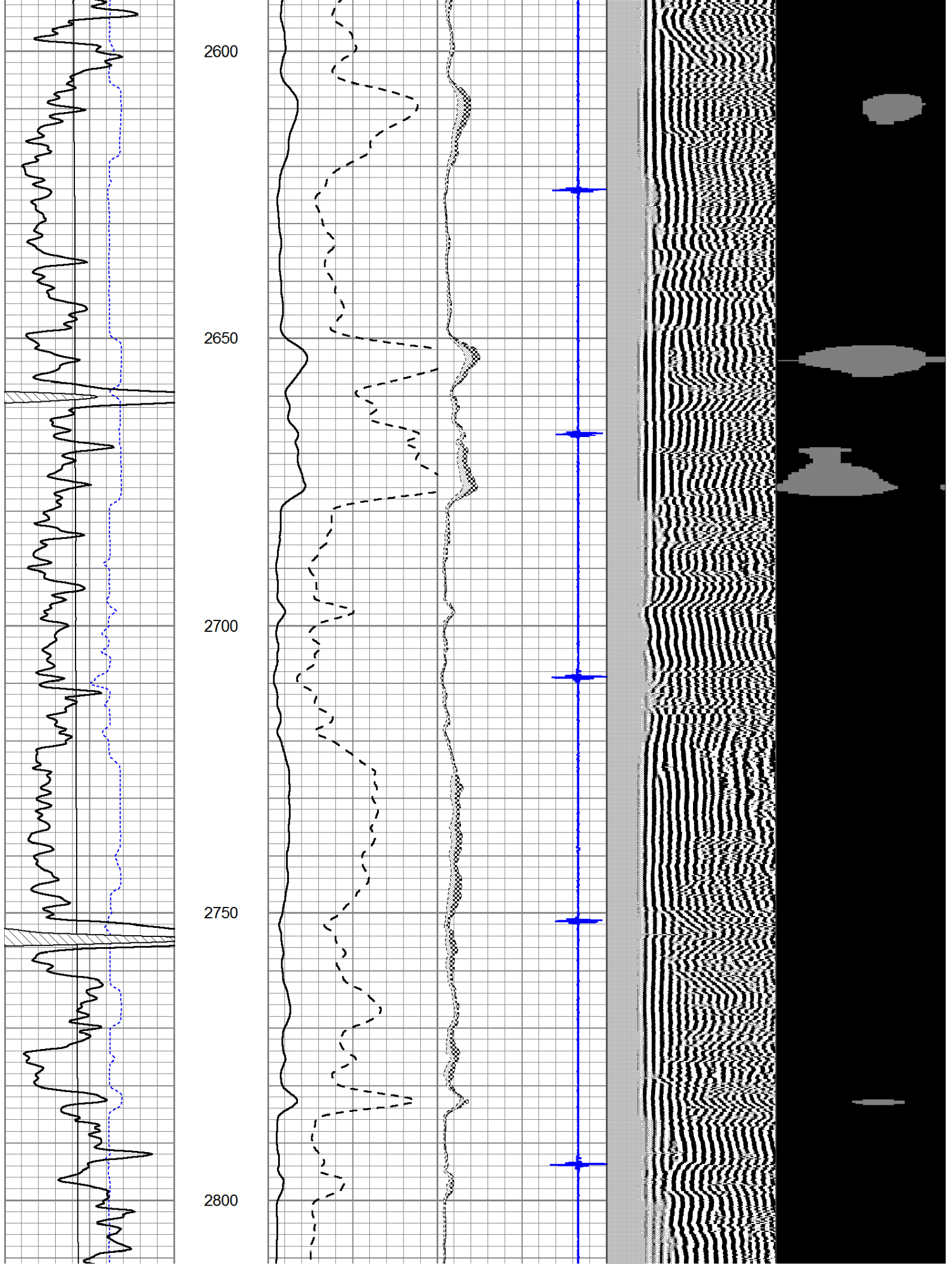


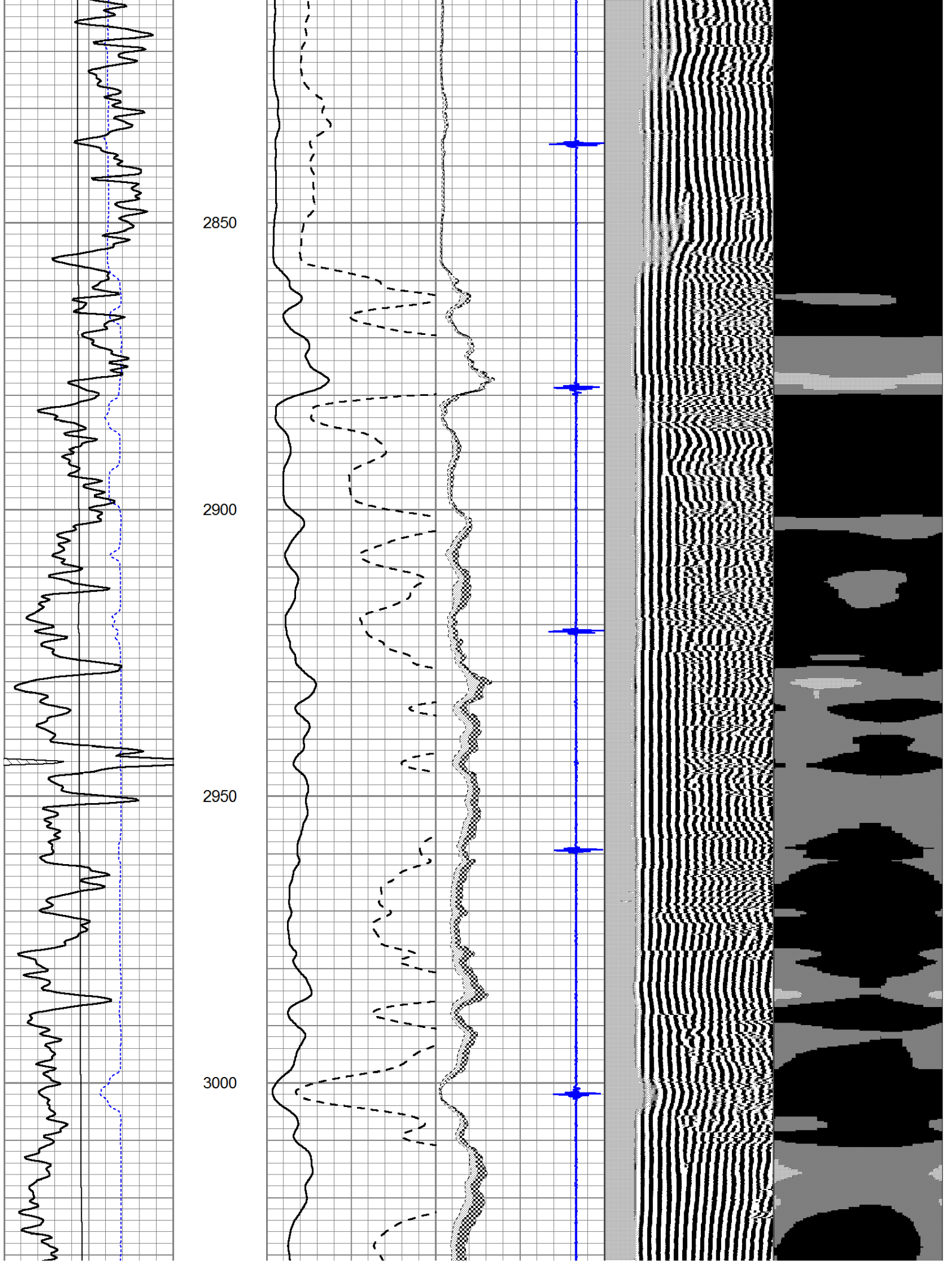


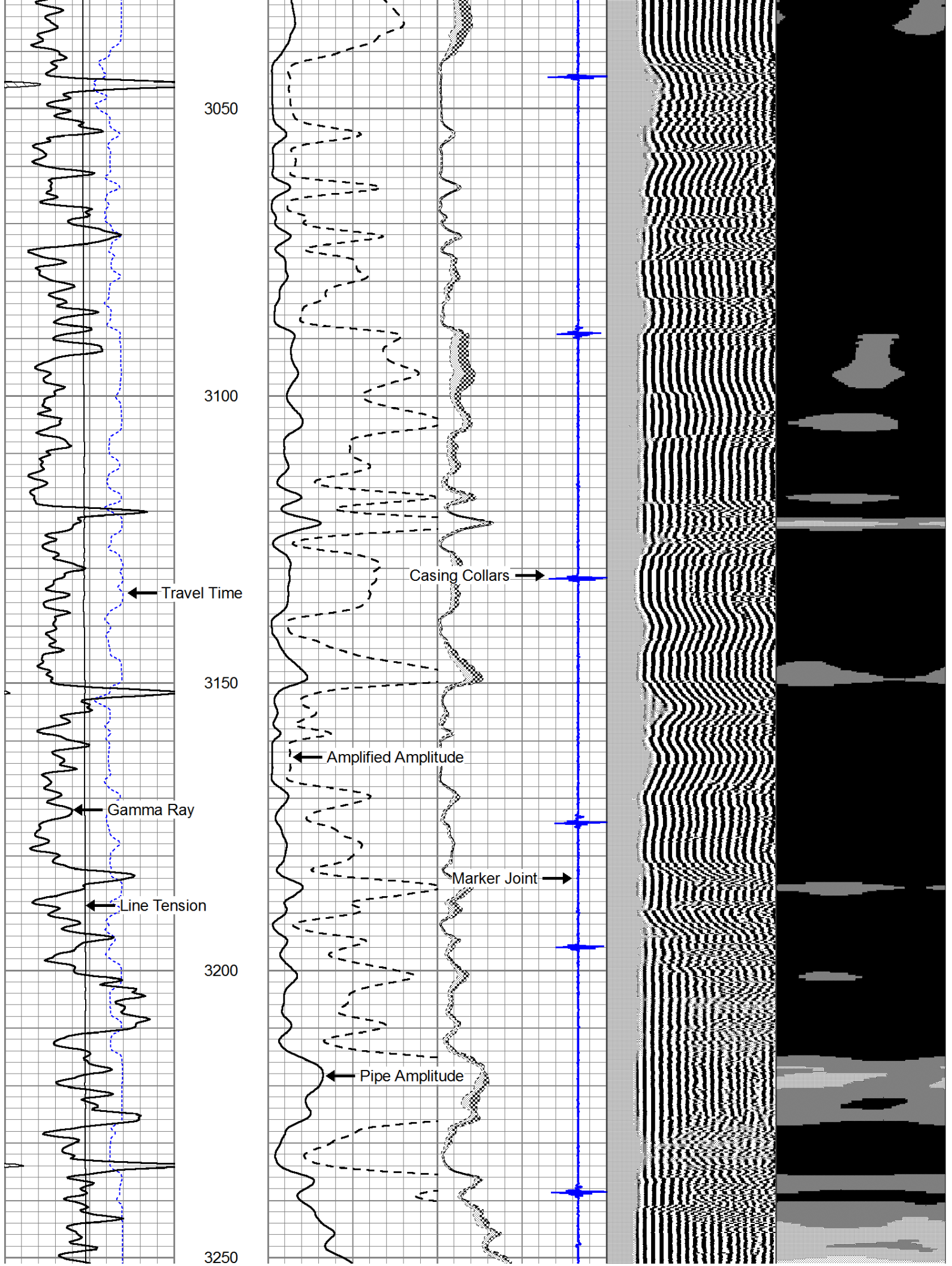


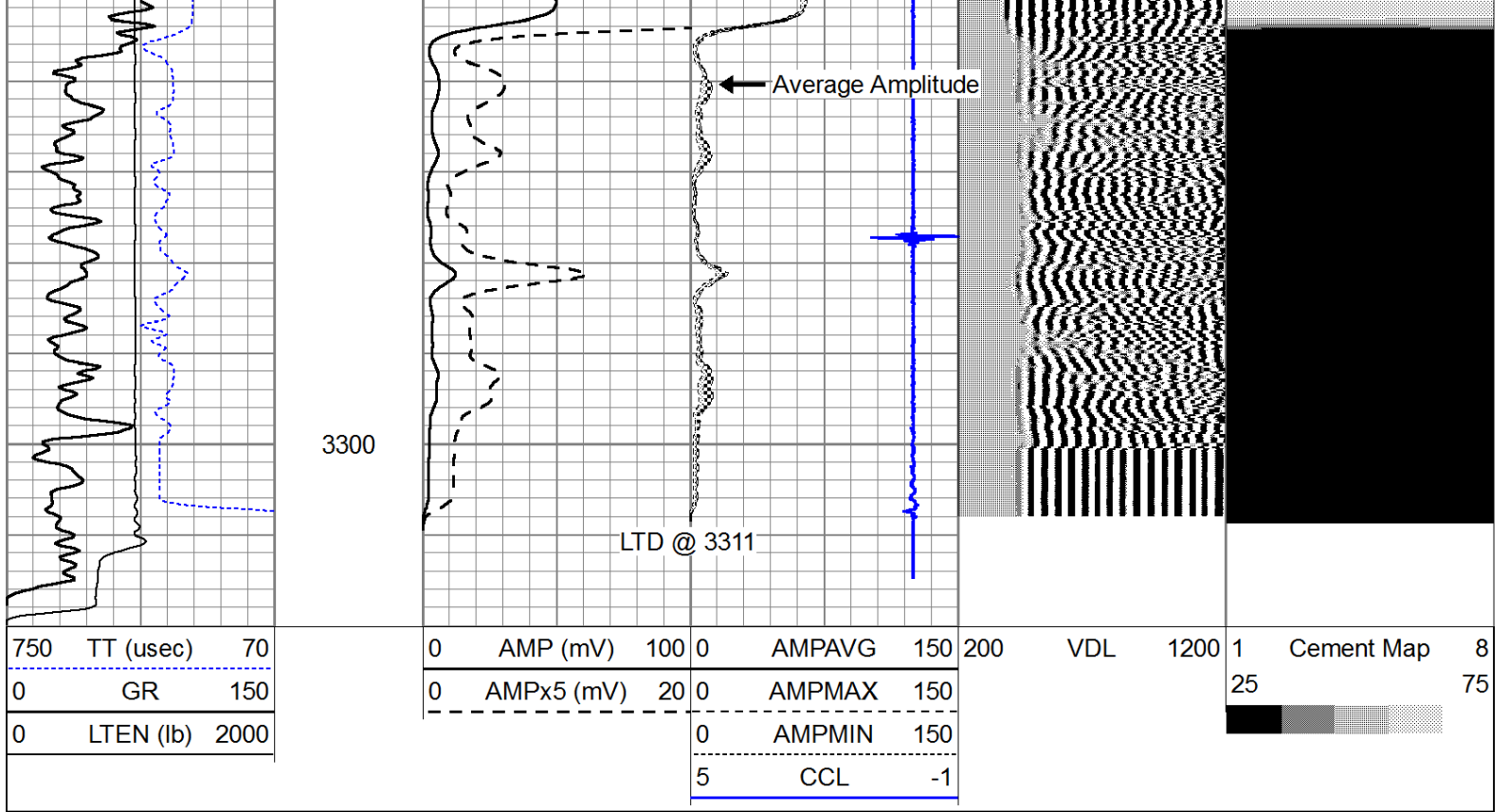












# Repeat Section

Database File: gilbert-stewart-purcella1owwo.db  
 Dataset Pathname: PurcellA1/sgrcbl/pass2  
 Presentation Format: scbl02  
 Dataset Creation: Fri Aug 10 11:31:03 2012 by Log SCH 111116  
 Charted by: Depth in Feet scaled 1:240

