



DIGITAL LOG (785) 625-3858

Radiation Guard
Log

15-159-19248-00-01

API No.

Company **Gilbert-Stewart Operating, LLC**
 Well **Purcell 'A' No.1 'OWWO'**
 Field **Chase-Silica**
 County **Rice** State **Kansas**

Location **NW/NW/NE
330' FNL & 2350' FEL**

Other Services
NONE

Sec: **28** Twp: **19S** Rge: **9W**

Permanent Datum **Ground Level** Elevation **1709**
 Log Measured From **Kelly Bushing** **8** Ft. Above Perm. Datum
 Drilling Measured From **Kelly Bushing**

Elevation
K.B. 1717
D.F. 1709
G.L. 1709

Date	7/25/2012
Run Number	One
Depth Driller	3806
Depth Logger	3805
Bottom Logged Interval	3804
Top Log Interval	200
Casing Driller	8.625 @ 230
Casing Logger	227
Bit Size	7.875
Type Fluid in Hole	Chemical
Salinity,ppm CL	48,000
Density / Viscosity	9.4 61
pH / Fluid Loss	7.0 6.3
Source of Sample	Flowline
Rm @ Meas. Temp	.09 @ 91
Rmf @ Meas. Temp	.07 @ 91
Rmc @ Meas. Temp	.12 @ 91
Source of Rmf / Rmc	Charts
Rm @ BHT	.07 @ 114
Operating Rig Time	2 Hours
Max Rec. Temp. F	114
Equipment Number	17
Location	Hays
Recorded By	C. Desaire
Witnessed By	Derek Patterson

<<< Fold Here >>>

All interpretations are opinions based on inferences from electrical or other measurements and we cannot and do not guarantee the accuracy or correctness of any interpretation, and we shall not, except in the case of gross or willful negligence on our part, be liable or responsible for any loss, costs, damages, or expenses incurred or sustained by anyone resulting from any interpretation made by any of our officers, agents or employees. These interpretations are also subject to our general terms and conditions set out in our current Price Schedule.

Comments

Thank you for using Log-Tech, Inc.
(785) 625-3858

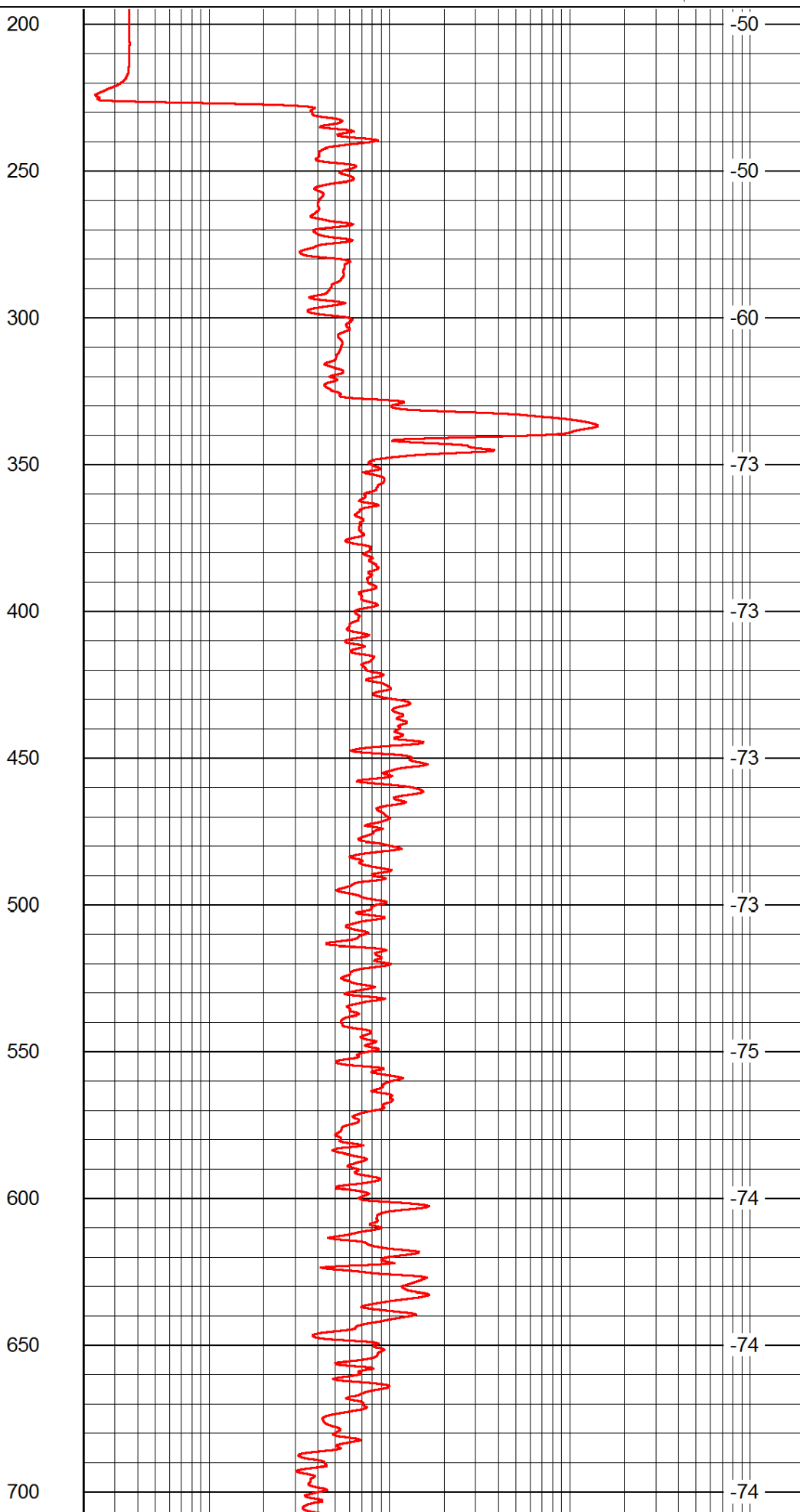
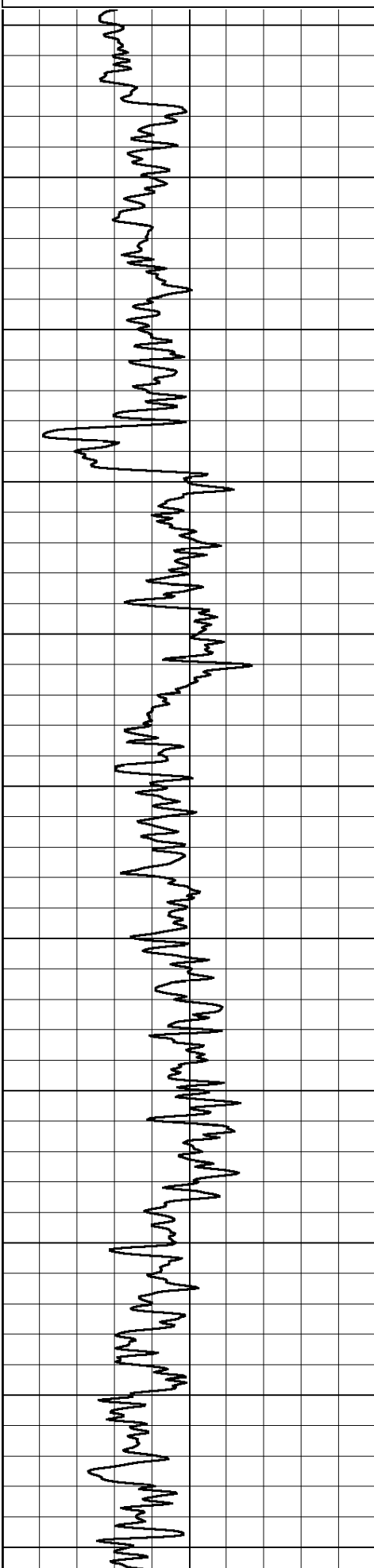
Chase KS, 2 N to K Rd,
1 1/2 E, S Into

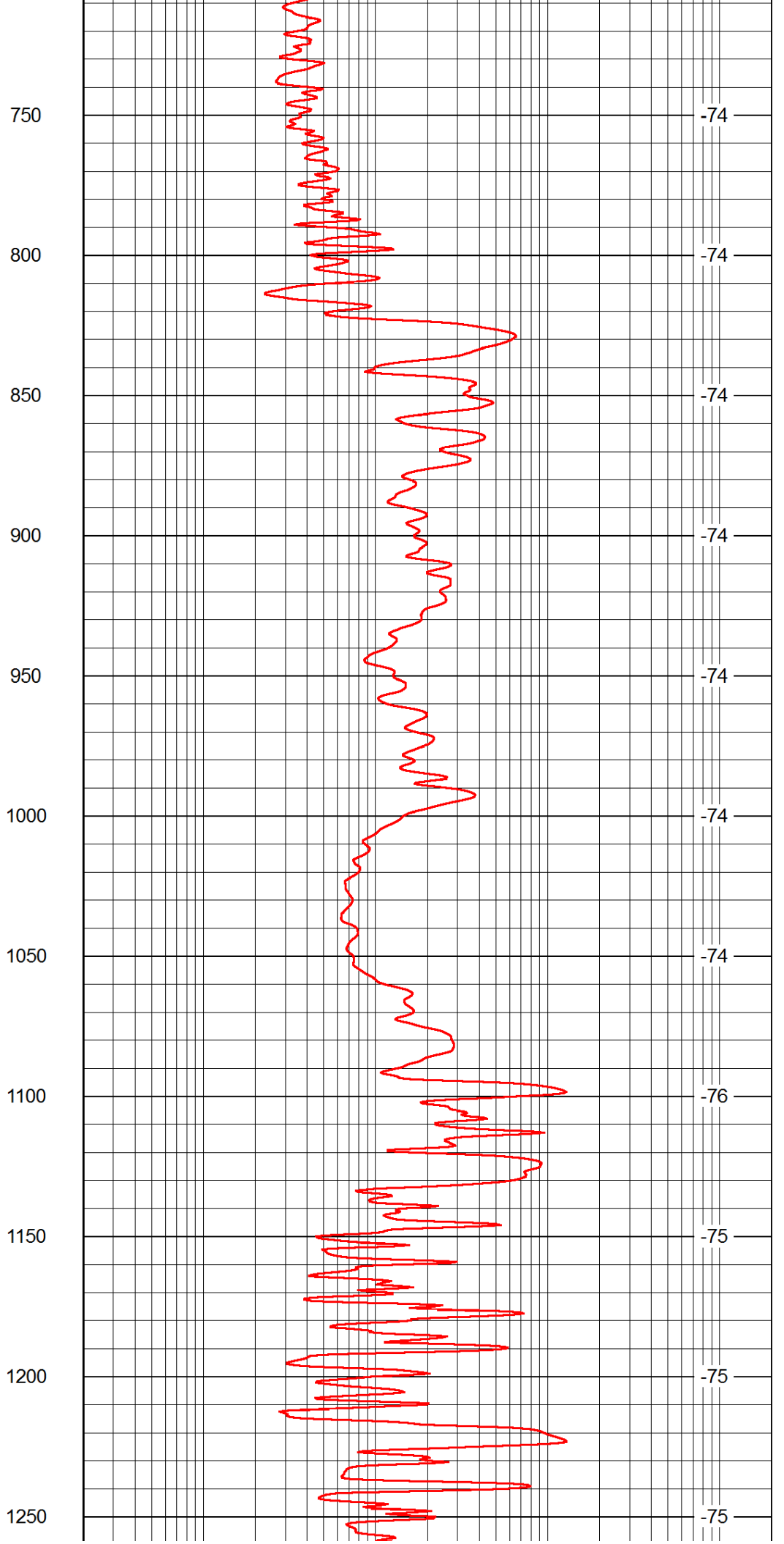
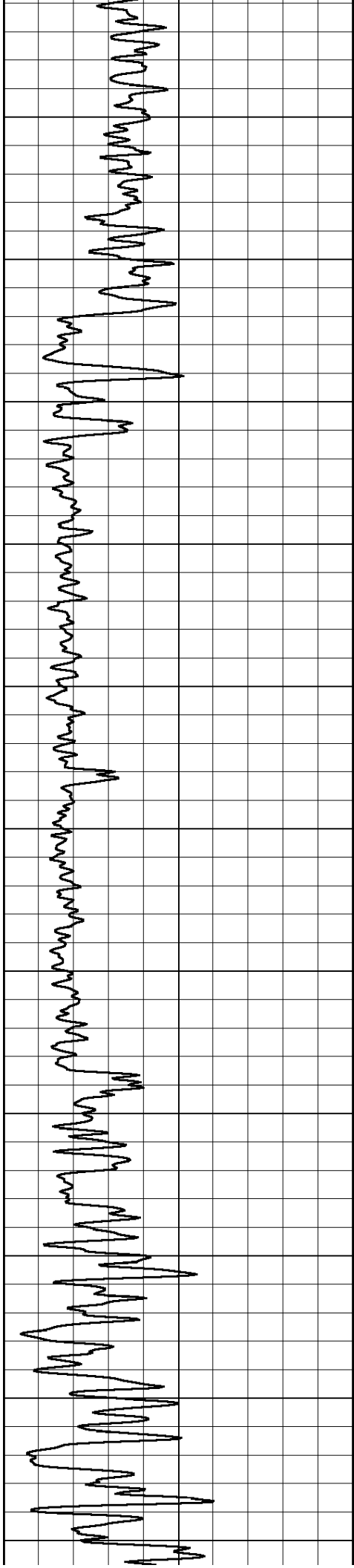
Database File: c:\warrior\data\gil-stew_purcell 'a' no.1 'owwo'\gshd.db
 Dataset Pathname: rag/gsrage
 Presentation Format: rag2in
 Dataset Creation: Thu Jul 26 09:47:30 2012
 Charted by: Depth in Feet scaled 1:600

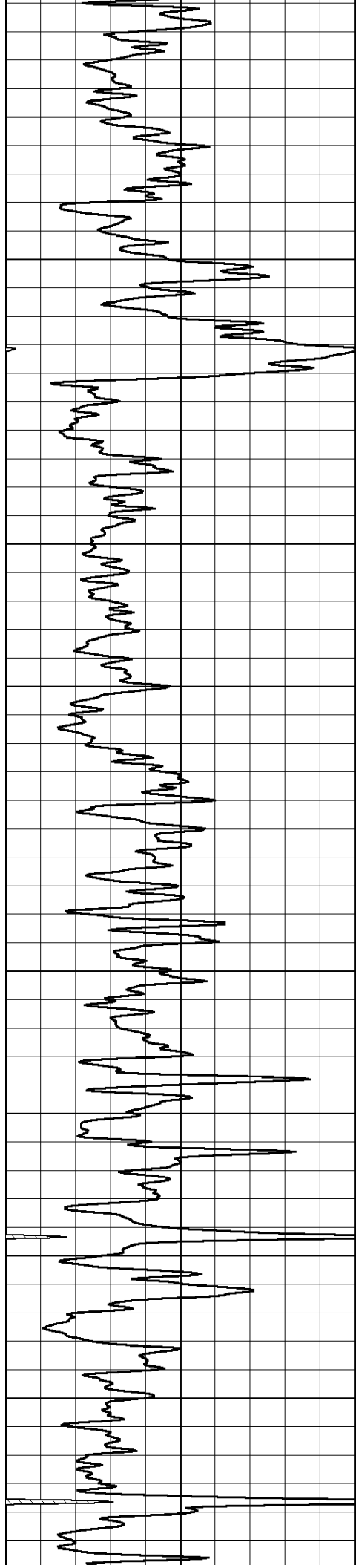
0 Gamma Ray 150

0.2 lgrd 2000

LSPD







1300

1350

1400

1450

1500

1550

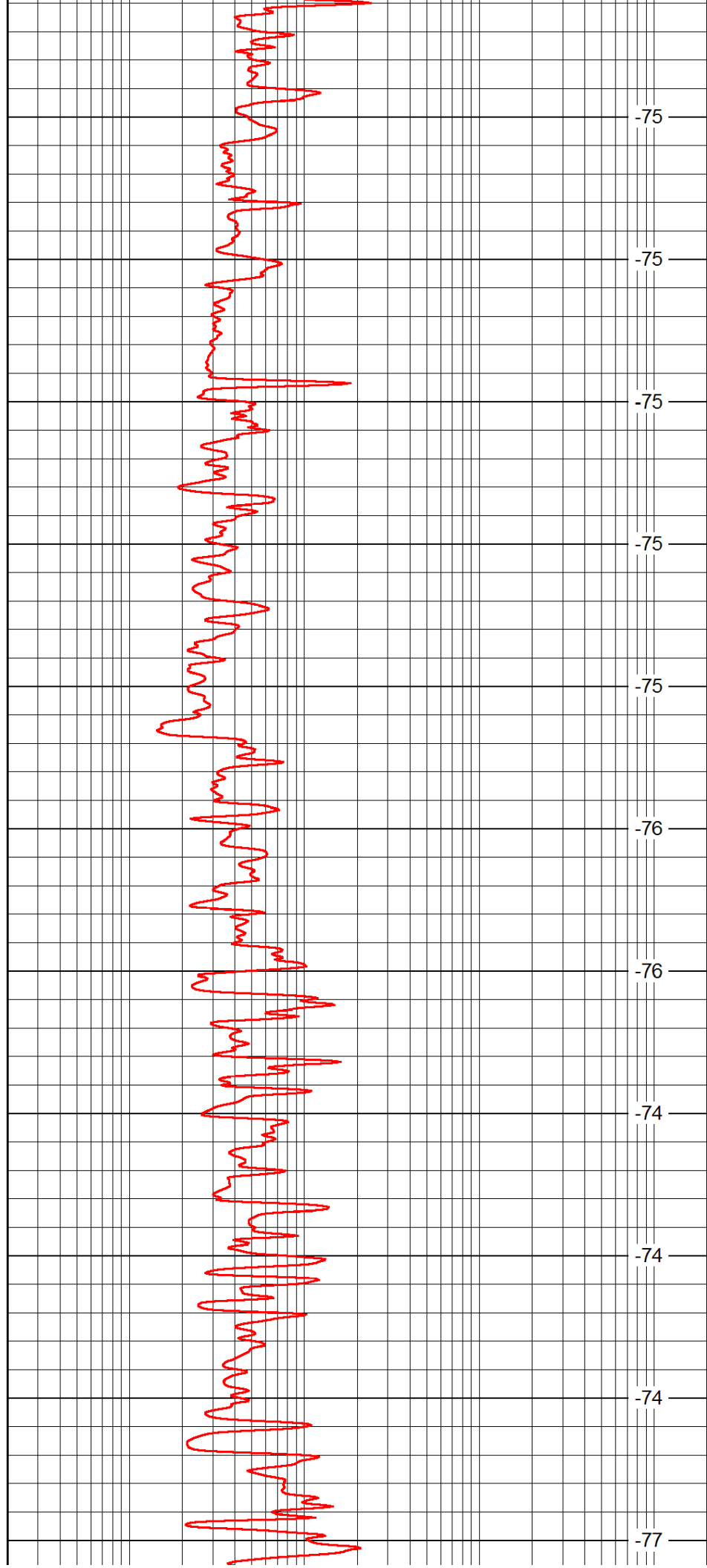
1600

1650

1700

1750

1800



-75

-75

-75

-75

-75

-76

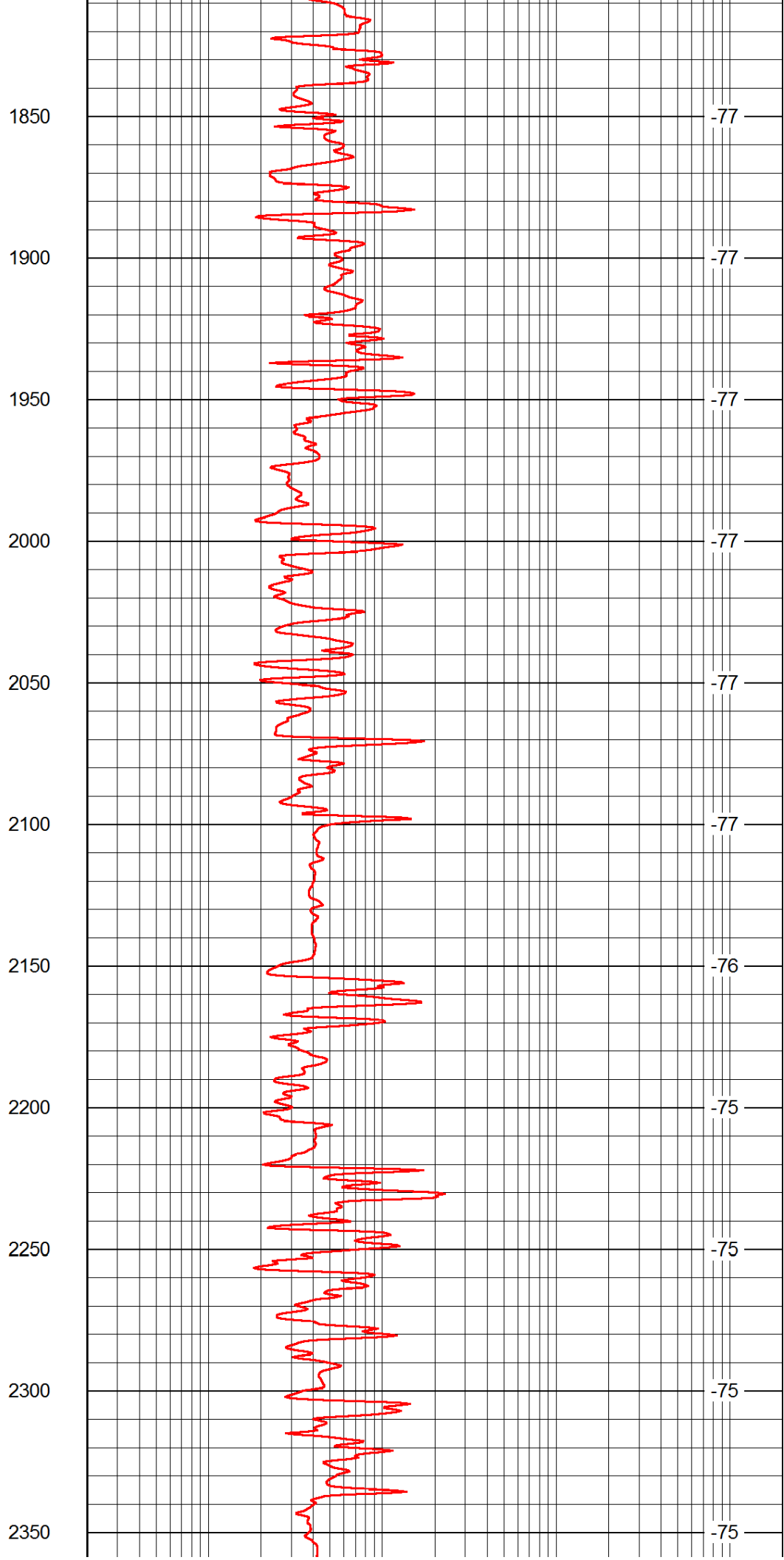
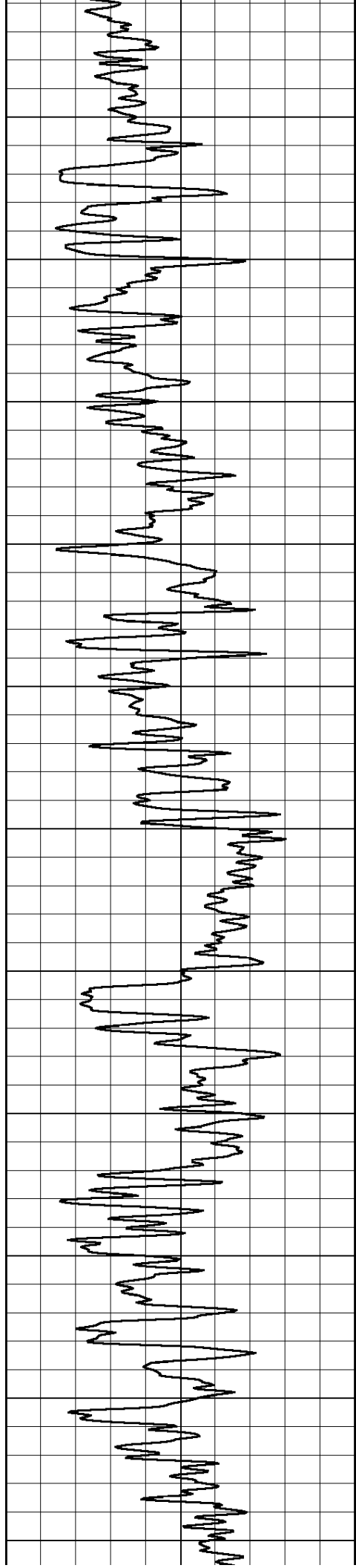
-76

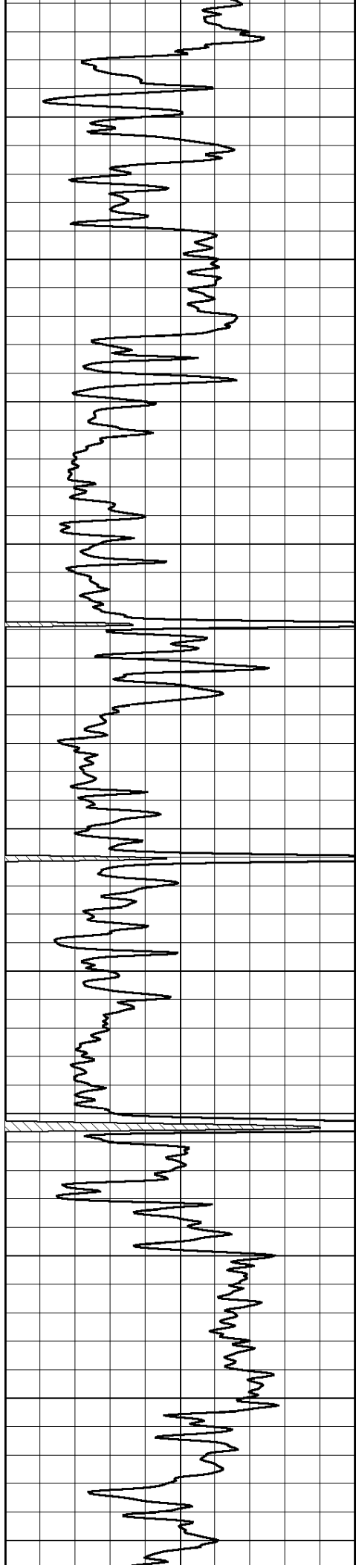
-74

-74

-74

-77





2400

2450

2500

2550

2600

2650

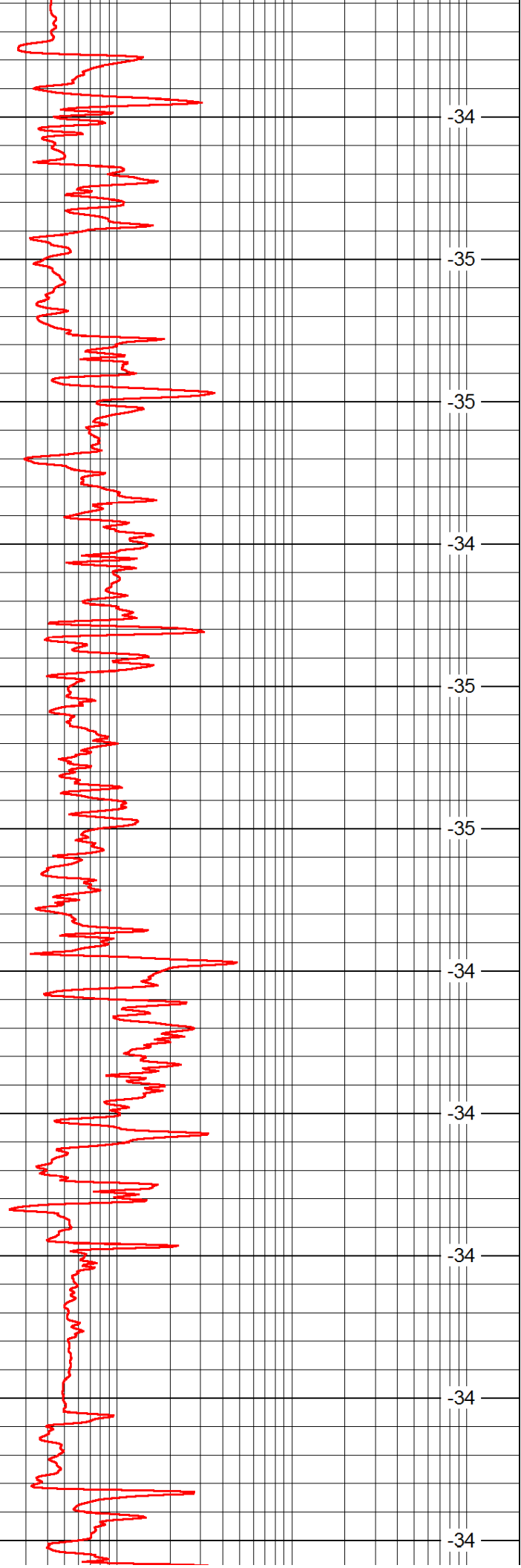
2700

2750

2800

2850

2900



-34

-35

-35

-34

-35

-35

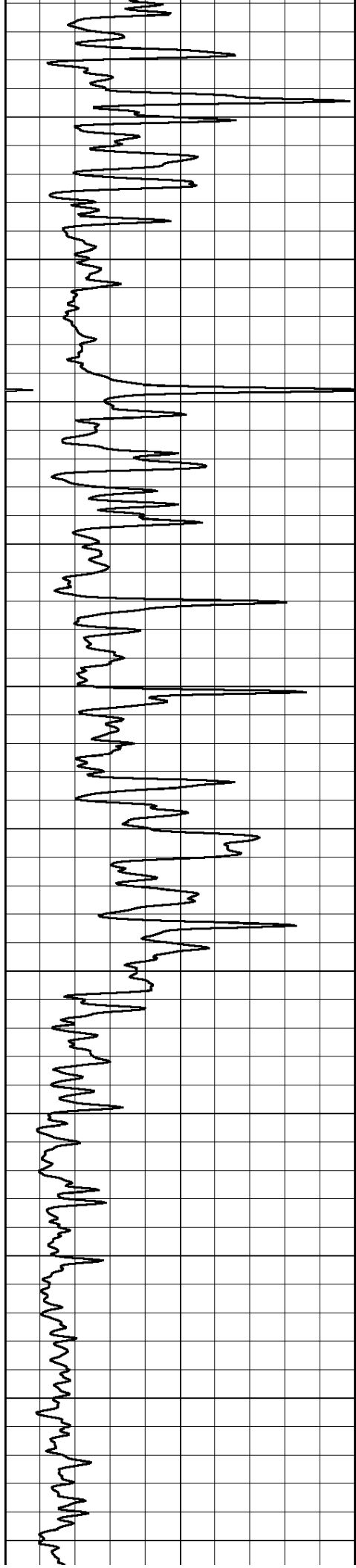
-34

-34

-34

-34

-34



2950

3000

3050

3100

3150

3200

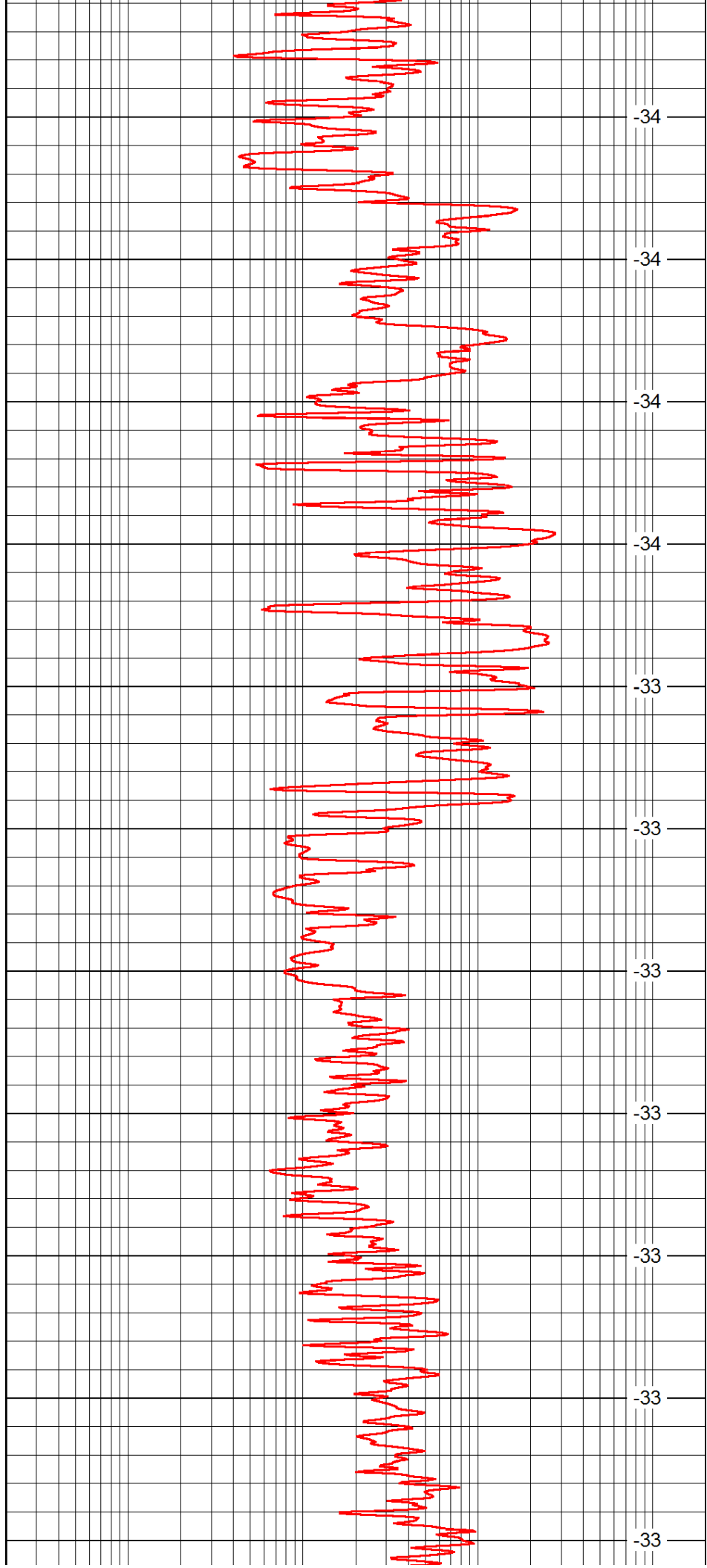
3250

3300

3350

3400

3450



-34

-34

-34

-34

-33

-33

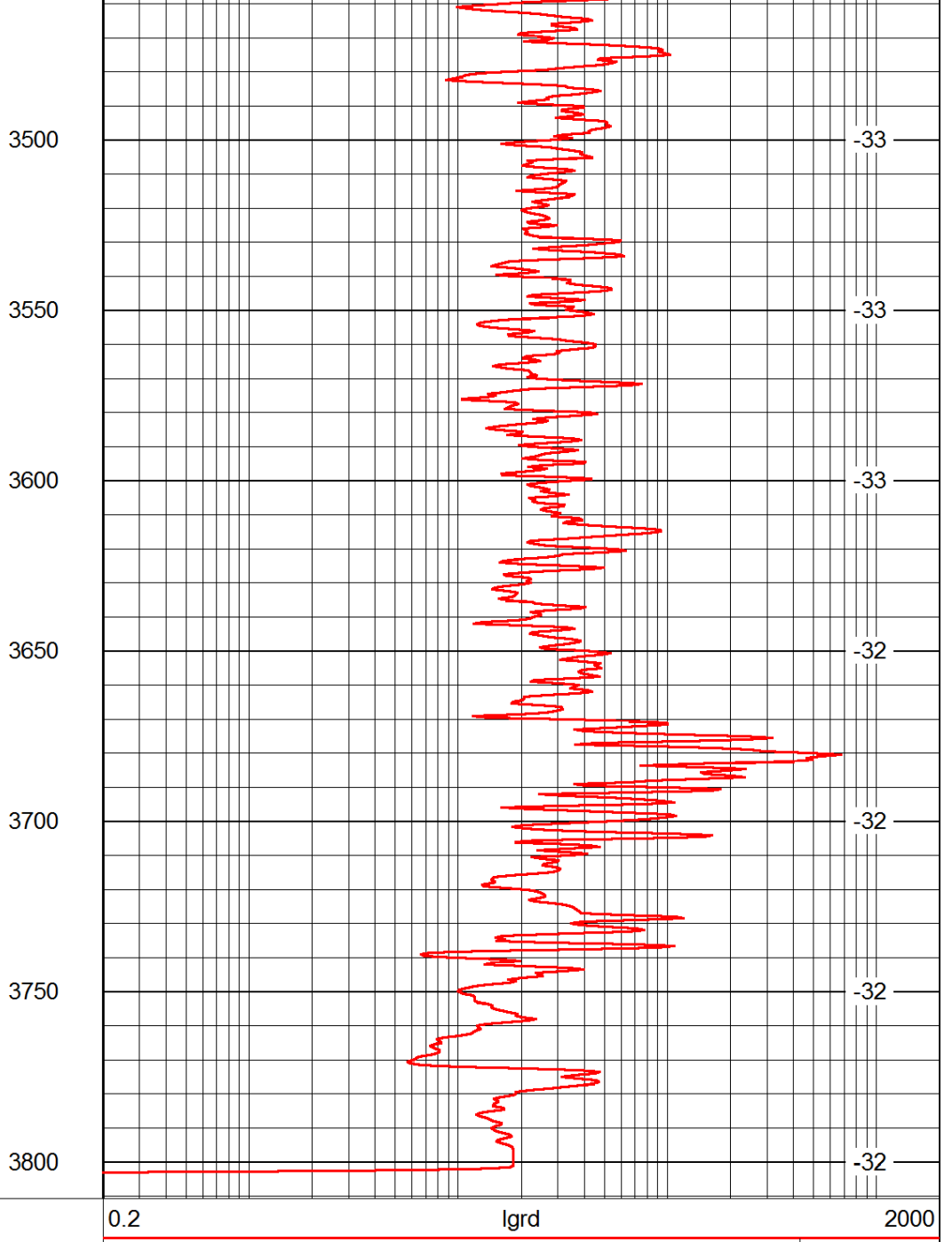
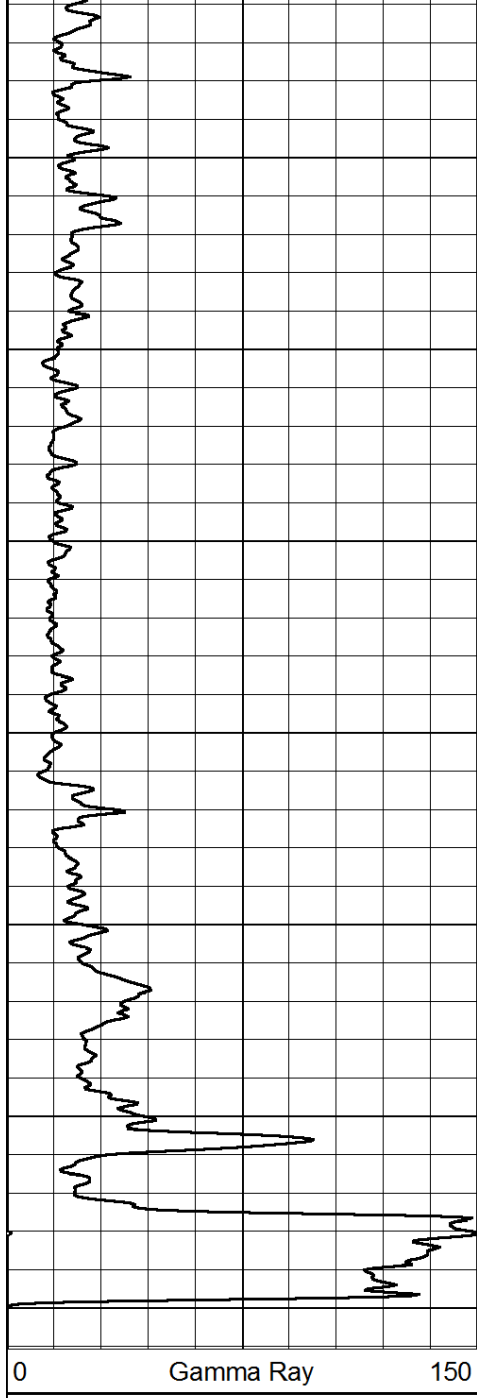
-33

-33

-33

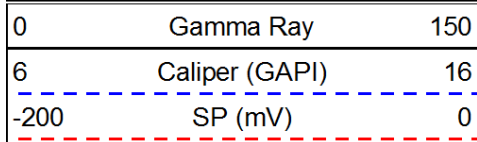
-33

-33

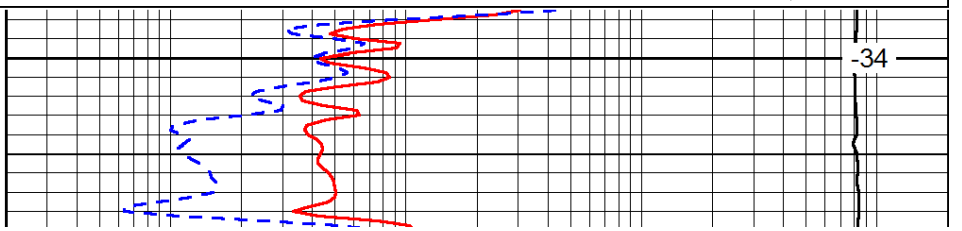
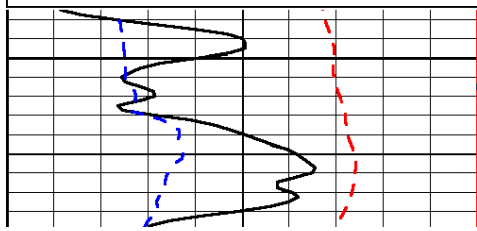


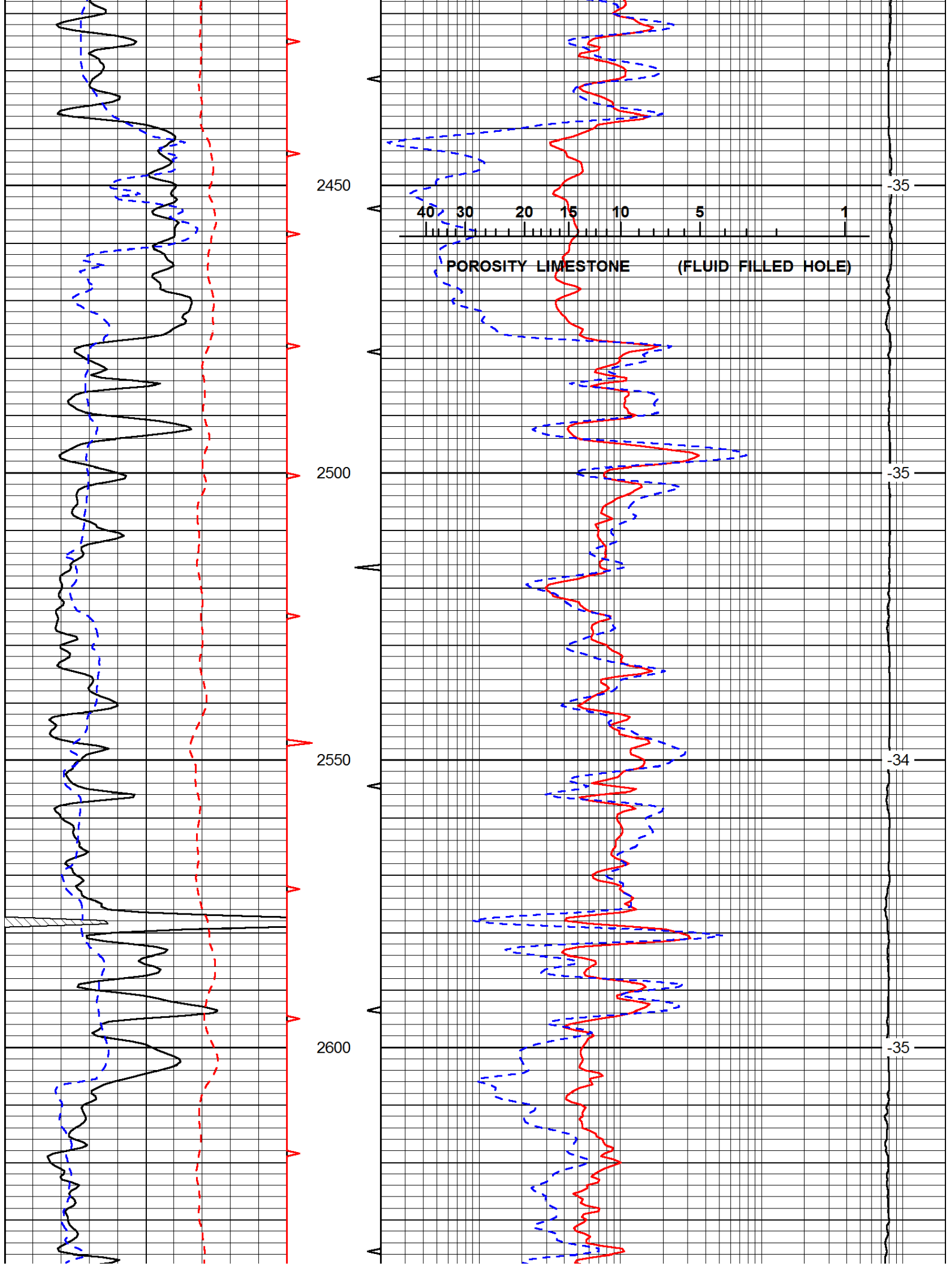
LSPD

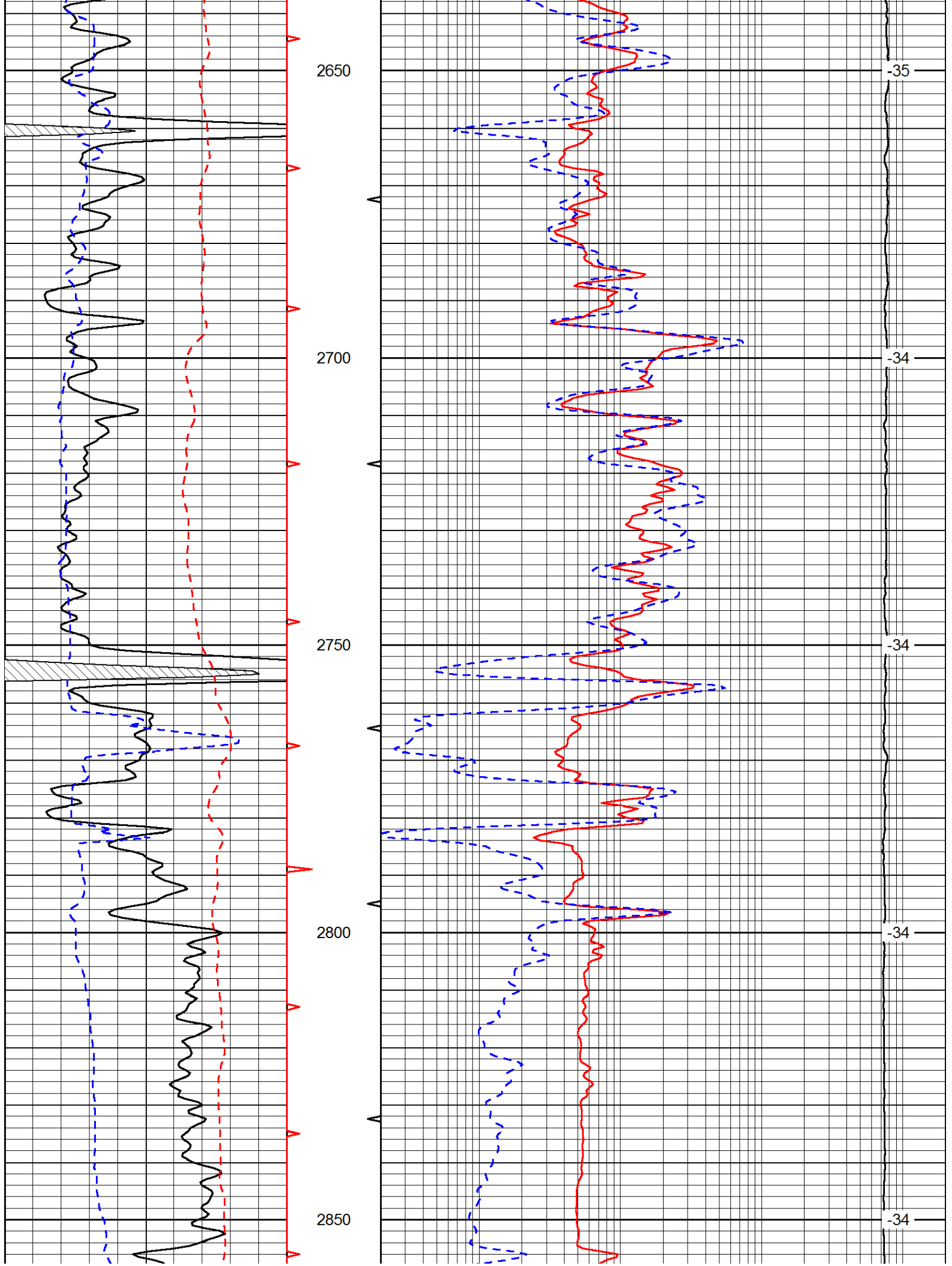
Database File: c:\warrior\data\gil-stew_purcell 'a' no.1 'owwo'\gshd.db
 Dataset Pathname: rag/gsrage
 Presentation Format: rag
 Dataset Creation: Thu Jul 26 09:47:30 2012
 Charted by: Depth in Feet scaled 1:240

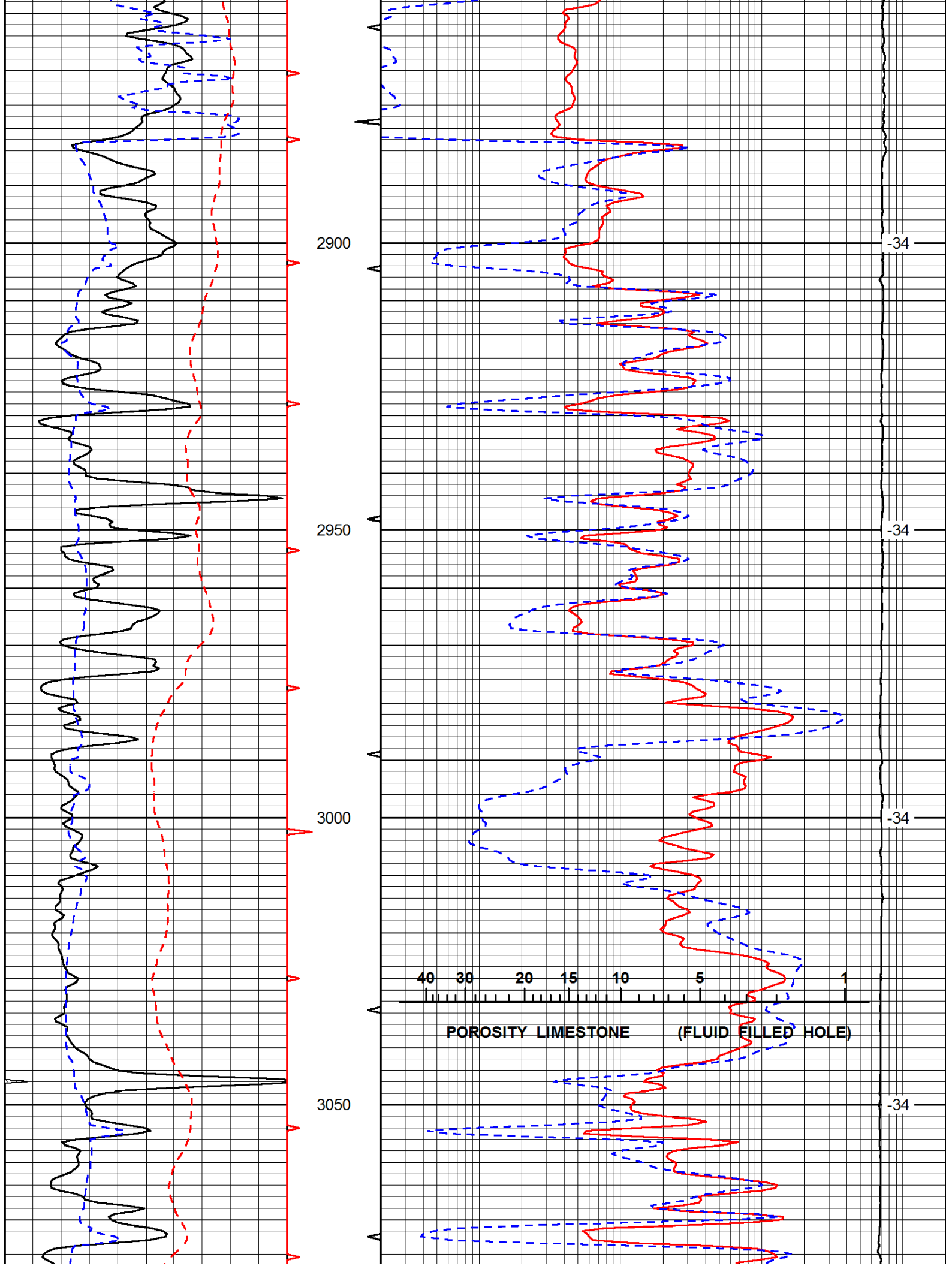


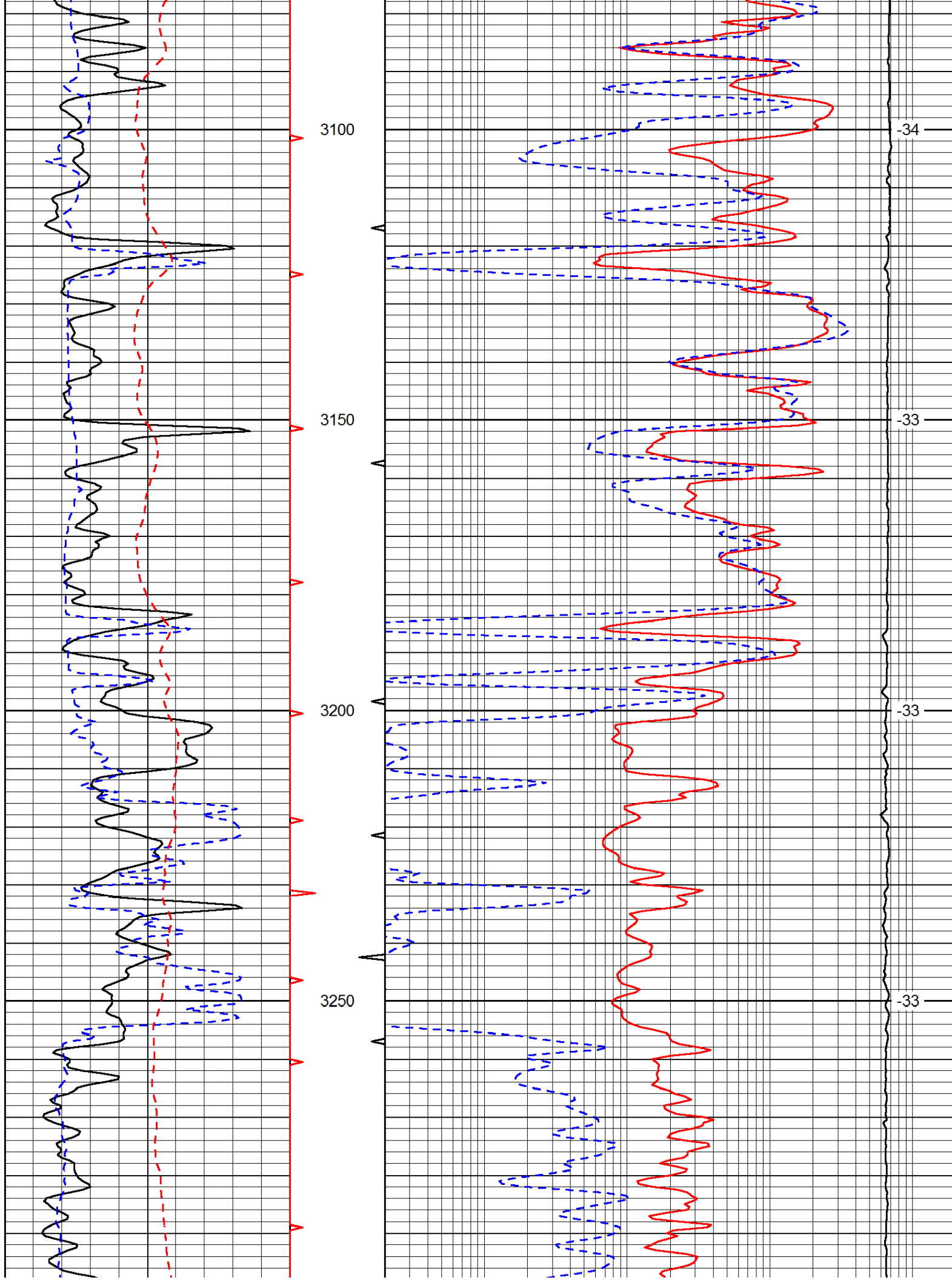
LSPD

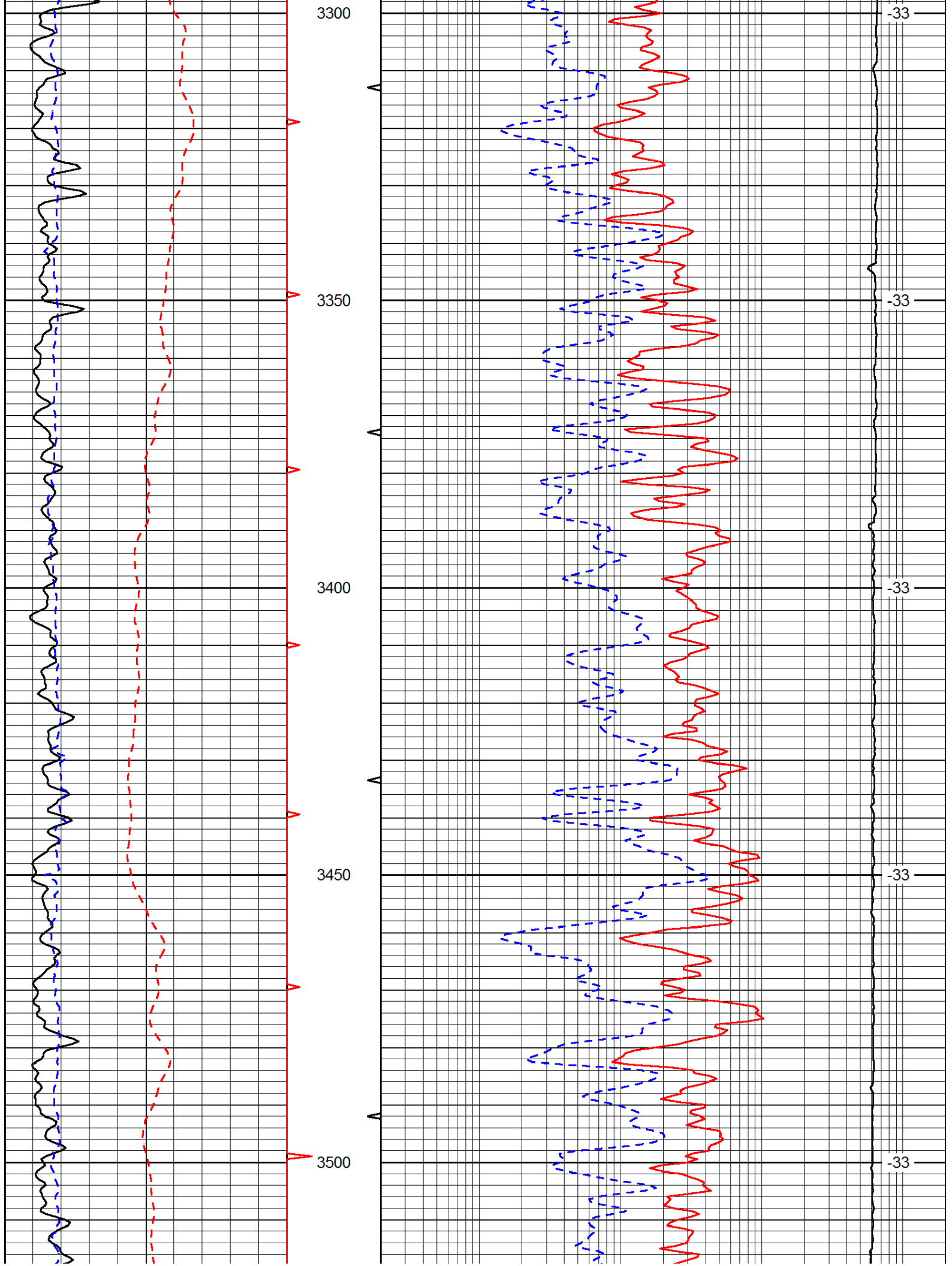


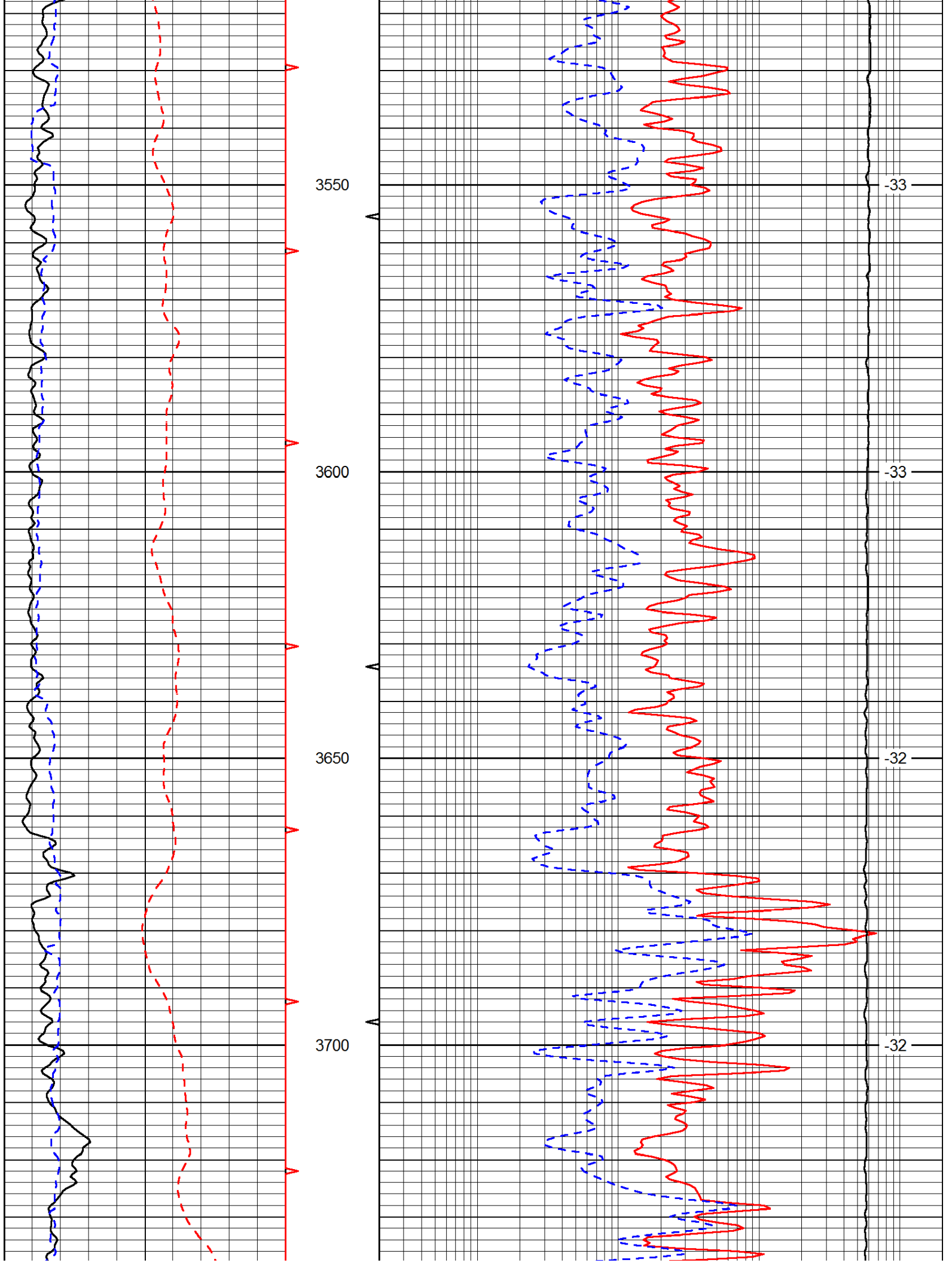


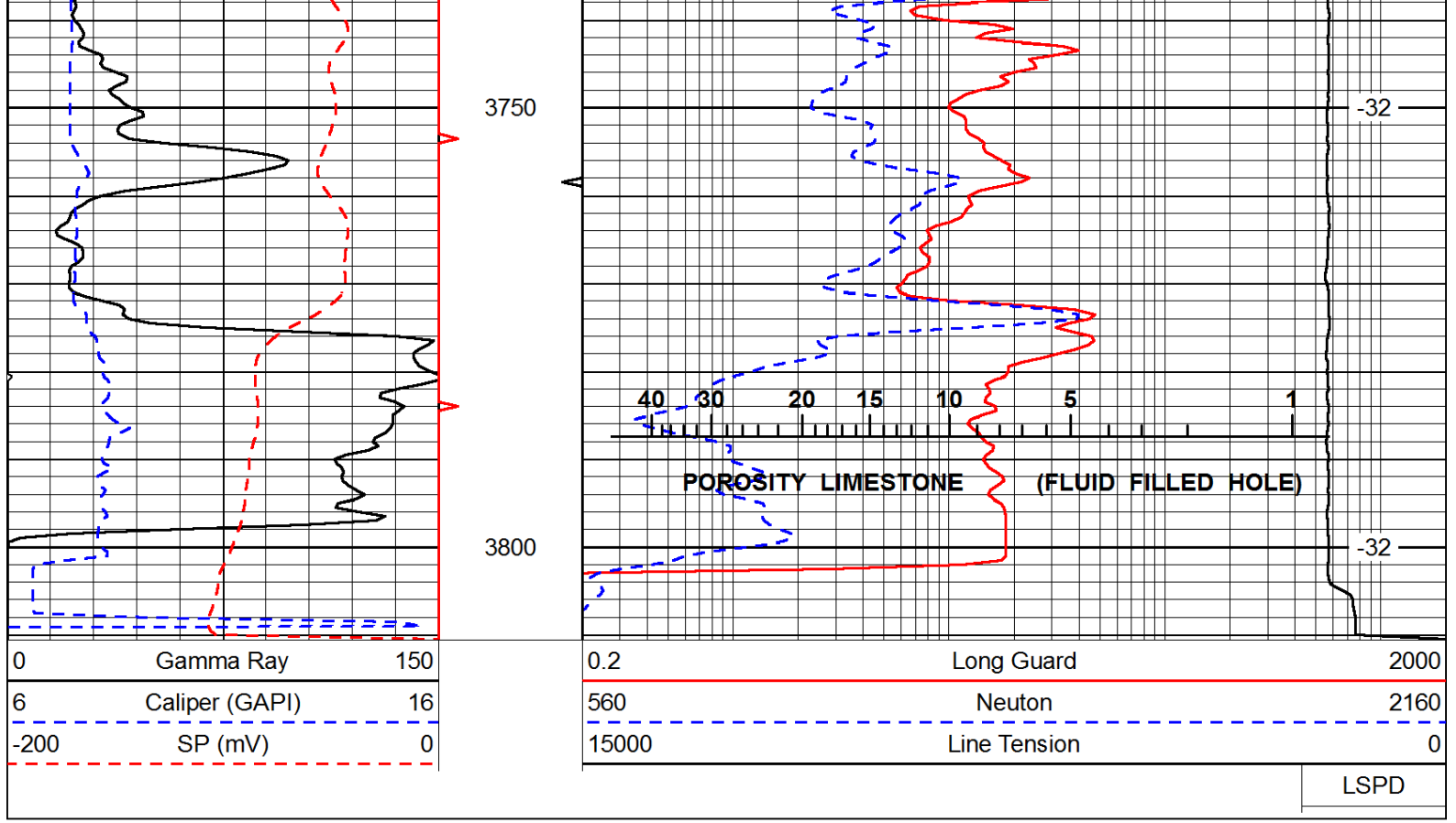












0	Gamma Ray	150
6	Caliper (GAPI)	16
-200	SP (mV)	0

0.2	Long Guard	2000
560	Neutron	2160
15000	Line Tension	0