



Pioneer Energy Services

Dual Induction Log

API No.	15-135-25,706-00-00		
Company	American Warrior, Inc.		
Well	RDT Unit No. 1		
Field	Wildcat		
County	Ness	State	Kansas
Location	2,640' FSL & 2,070' FWL		
Sec: 21	Twp: 18S	Rge: 22W	Other Services CNL/CDL

Permanent Datum	Ground Level	Elevation 2241	K.B. 2247 D.F. 2241 G.L. 2241
Log Measured From	Kelly Bushing	6 Ft. Above Perm. Datum	
Drilling Measured From	Kelly Bushing		
Date	12/17/2013		
Run Number	One		
Depth Driller	4420		
Depth Logger	4419		
Bottom Logged Interval	4418		
Top Log Interval	200		
Casing Driller	8.625 @ 225		
Casing Logger	218		
Bit Size	7.875		
Type Fluid in Hole	Chemical		
Salinity, ppm CL	4900		
Density / Viscosity	9.4	50	
pH / Fluid Loss	10.5	9.6	
Source of Sample	Flowline		
Rm @ Meas. Temp	.50	@ 68	
Rmf @ Meas. Temp	.38	@ 68	
Rmc @ Meas. Temp	.68	@ 68	
Source of Rmf / Rmc	Charts		
Rm @ BHT	.28	@ 120	
Operating Rig Time	2 1/2 Hours		
Max Rec. Temp. F	120		
Equipment Number	108		
Location	Hays		
Recorded By	J. Long		
Witnessed By	Jason Alm		

<<< Fold Here >>>

All interpretations are opinions based on inferences from electrical or other measurements and we cannot and do not guarantee the accuracy or correctness of any interpretation, and we shall not, except in the case of gross or willful negligence on our part, be liable or responsible for any loss, costs, damages, or expenses incurred or sustained by anyone resulting from any interpretation made by any of our officers, agents or employees. These interpretations are also subject to our general terms and conditions set out in our current Price Schedule.

Comments

Thank you for using Log-Tech, Inc.
(785) 625-3858

Bazine, 3 West to AA Road, 1 North, 1/2 West, 1/2 North, West Into

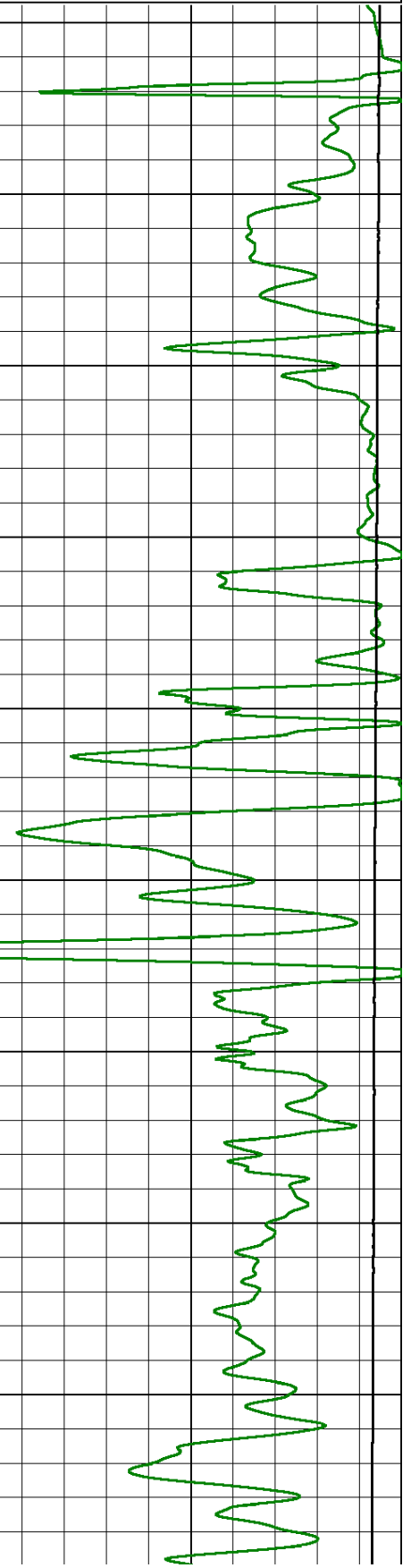
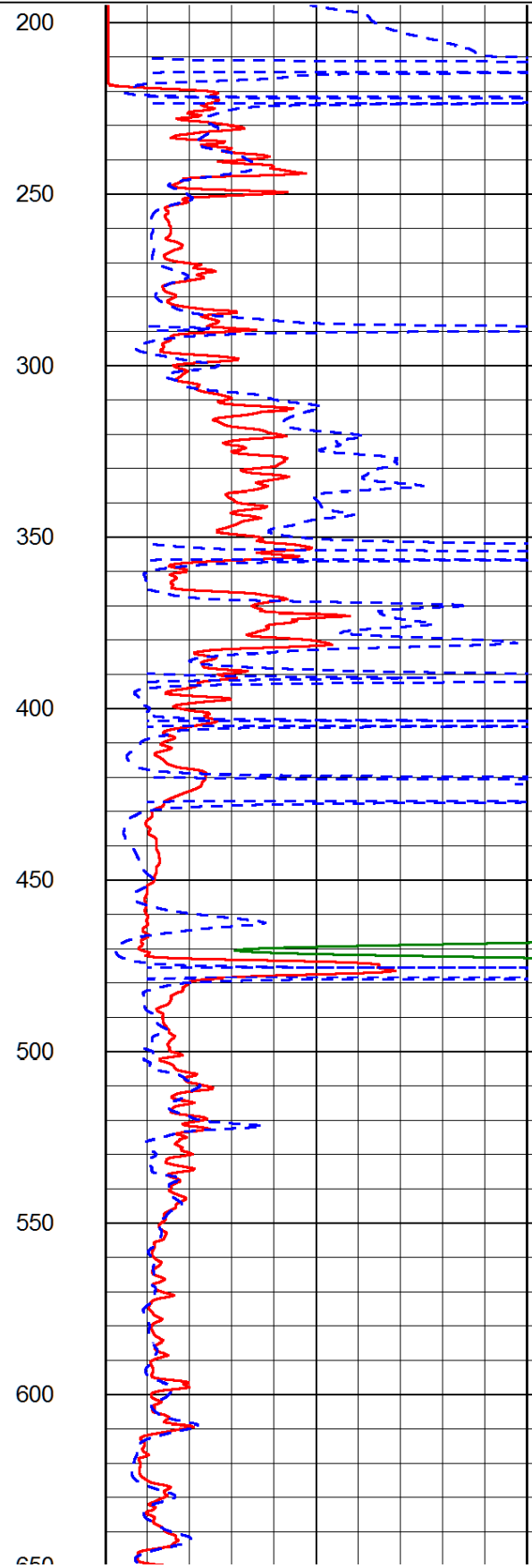
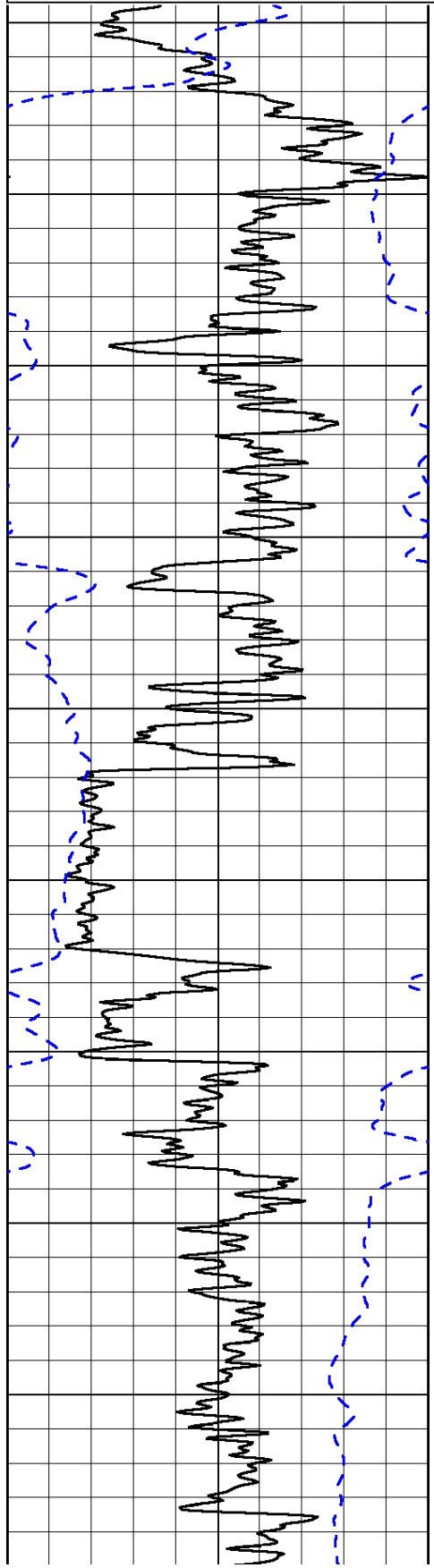
Database File: amwarrior_rdt_unit_1hd.db
 Dataset Pathname: dil/awstck
 Presentation Format: dil2in
 Dataset Creation: Wed Dec 18 00:54:54 2013
 Charted by: Depth in Feet scaled 1:600

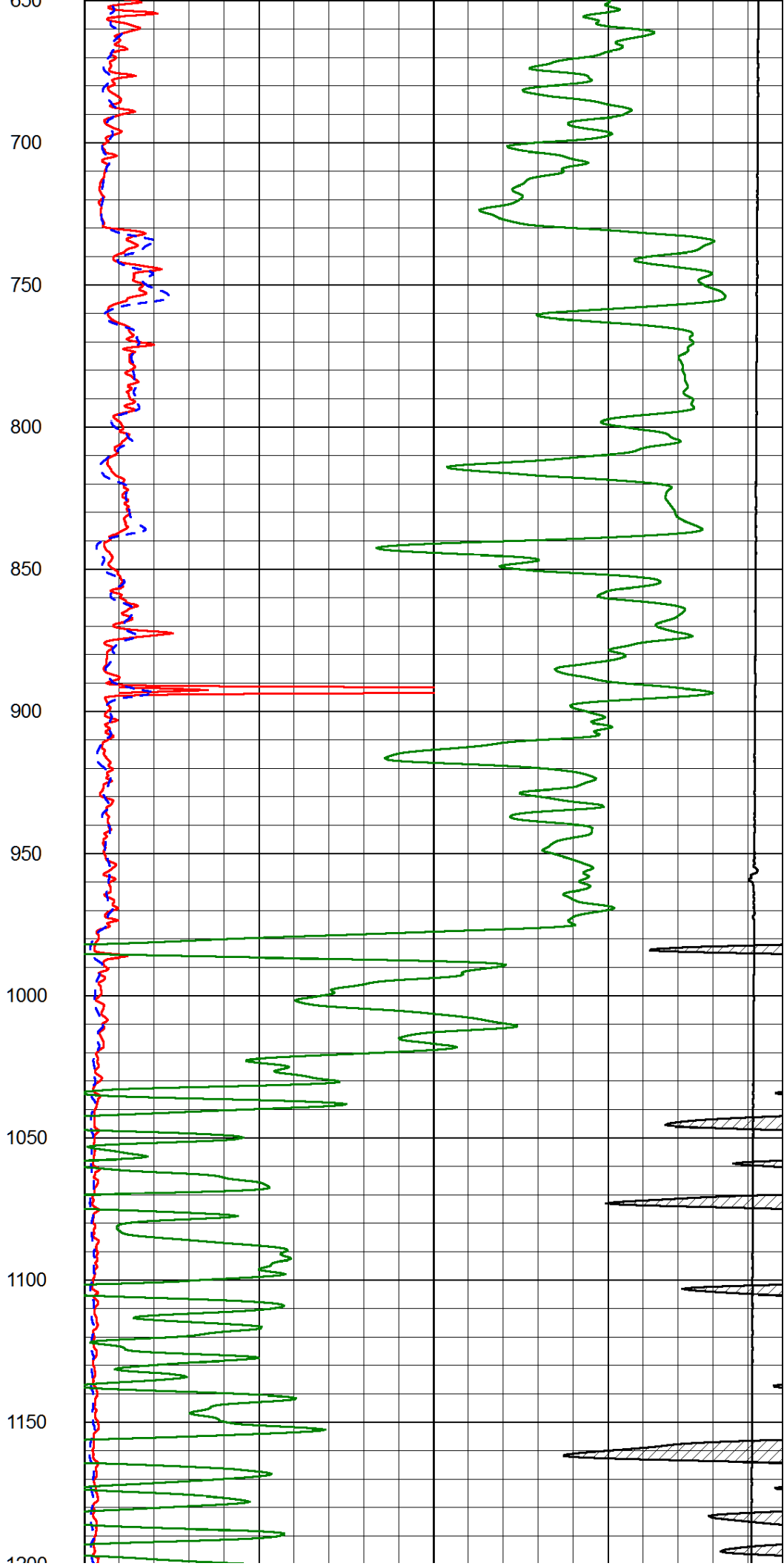
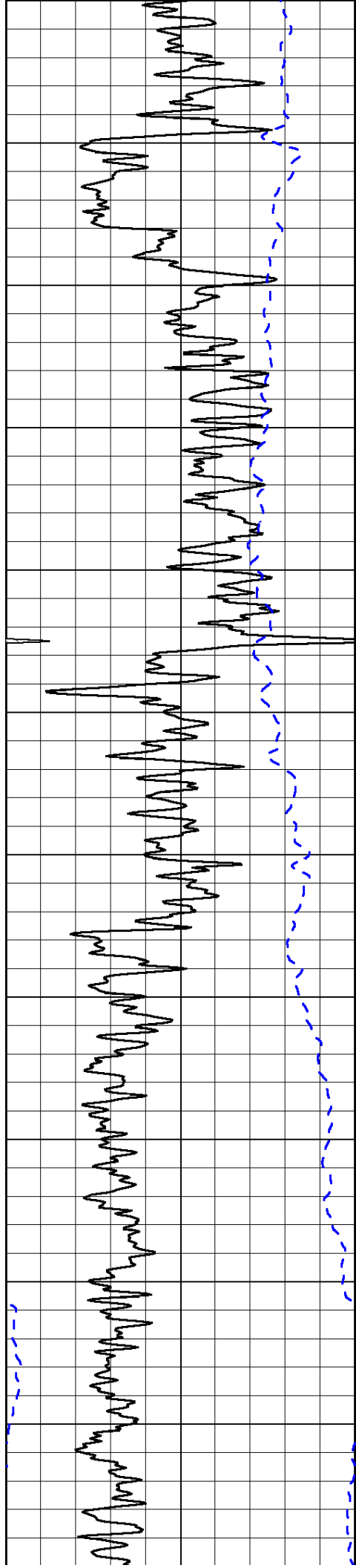
0	Gamma Ray (GAPI)	150
-200	SP (mV)	0

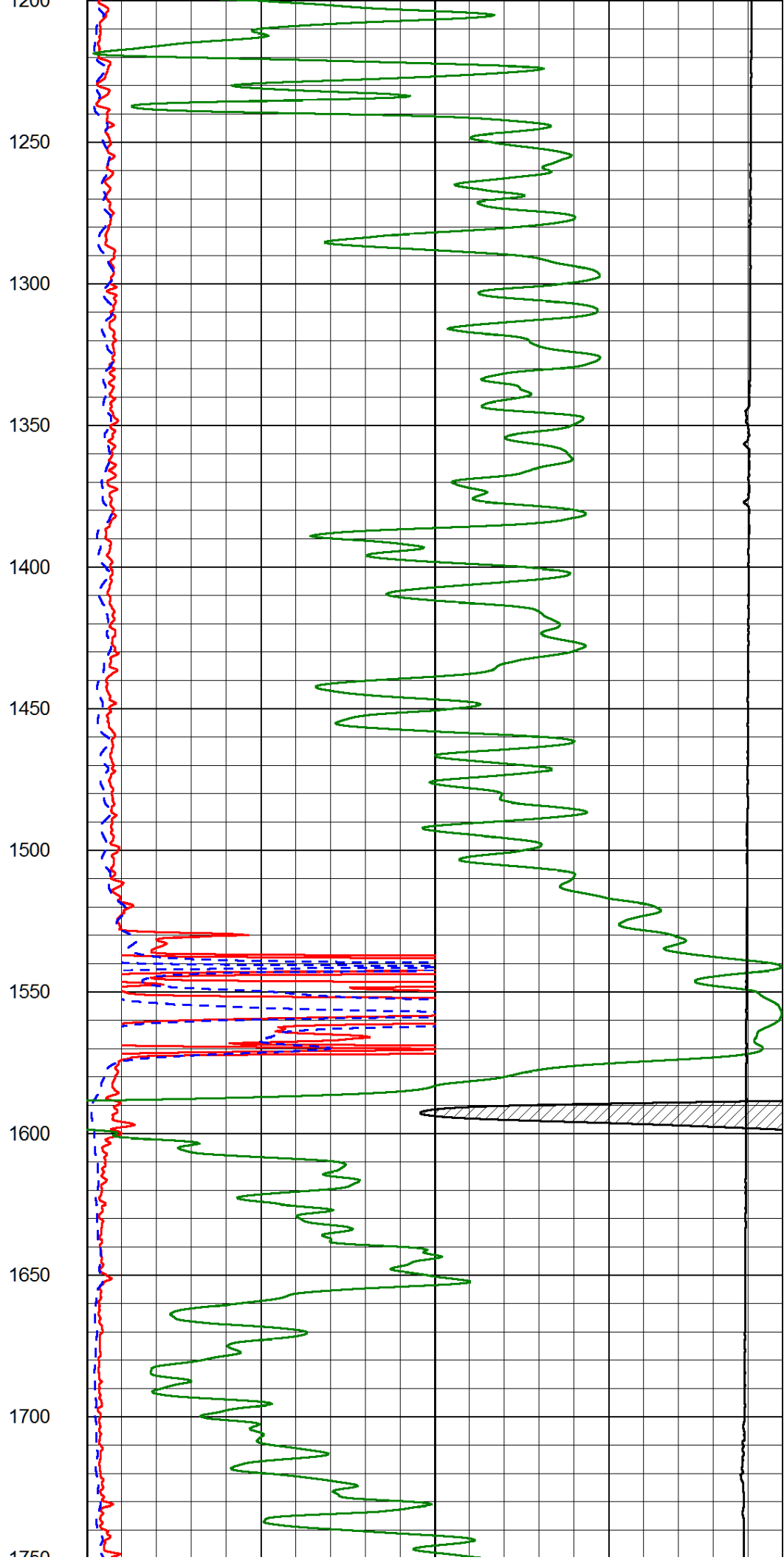
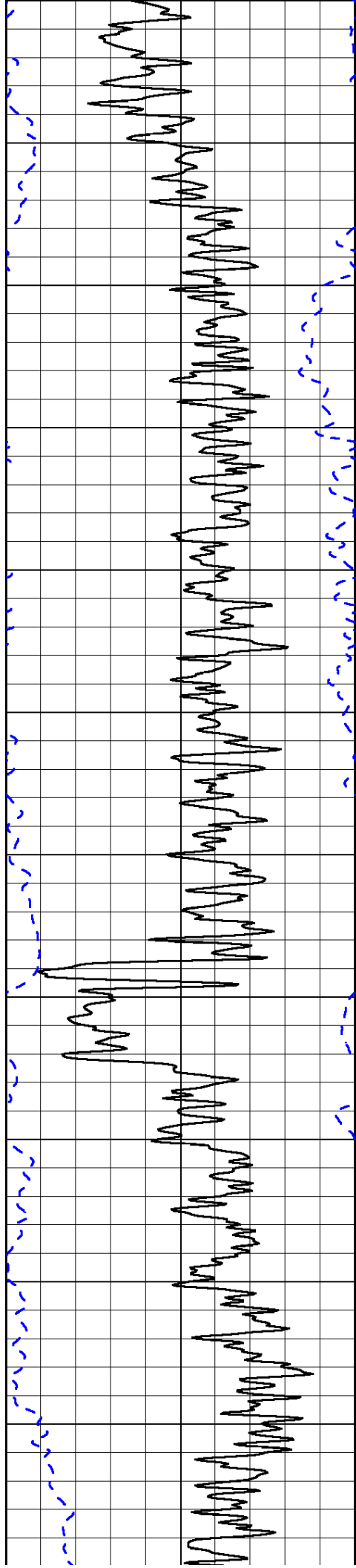
0	Shallow Resistivity (Ohm-m)	50
0	Deep Resistivity (Ohm-m)	50

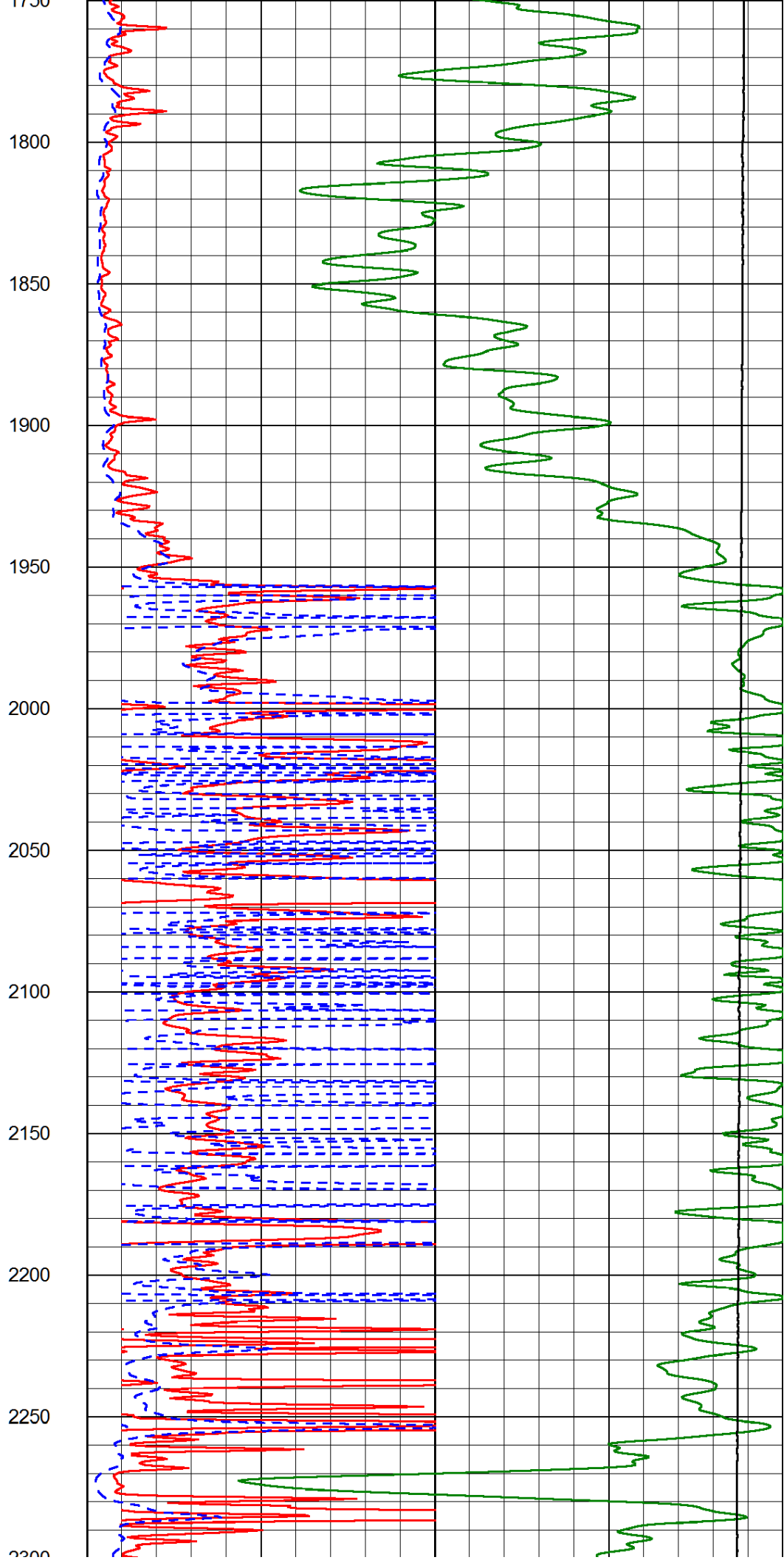
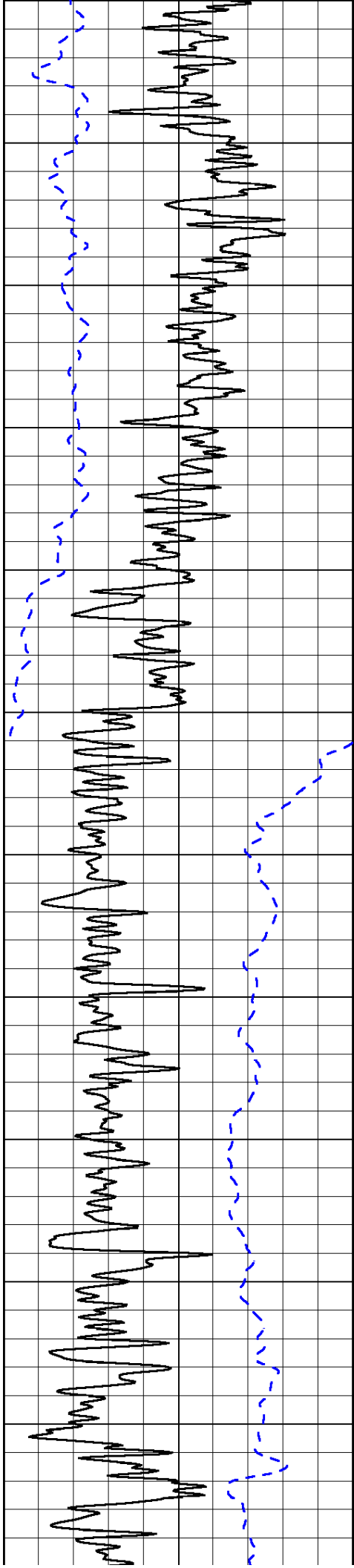
1000	Conductivity (Ohm-m)	0
15000	Line Tension (lb)	0

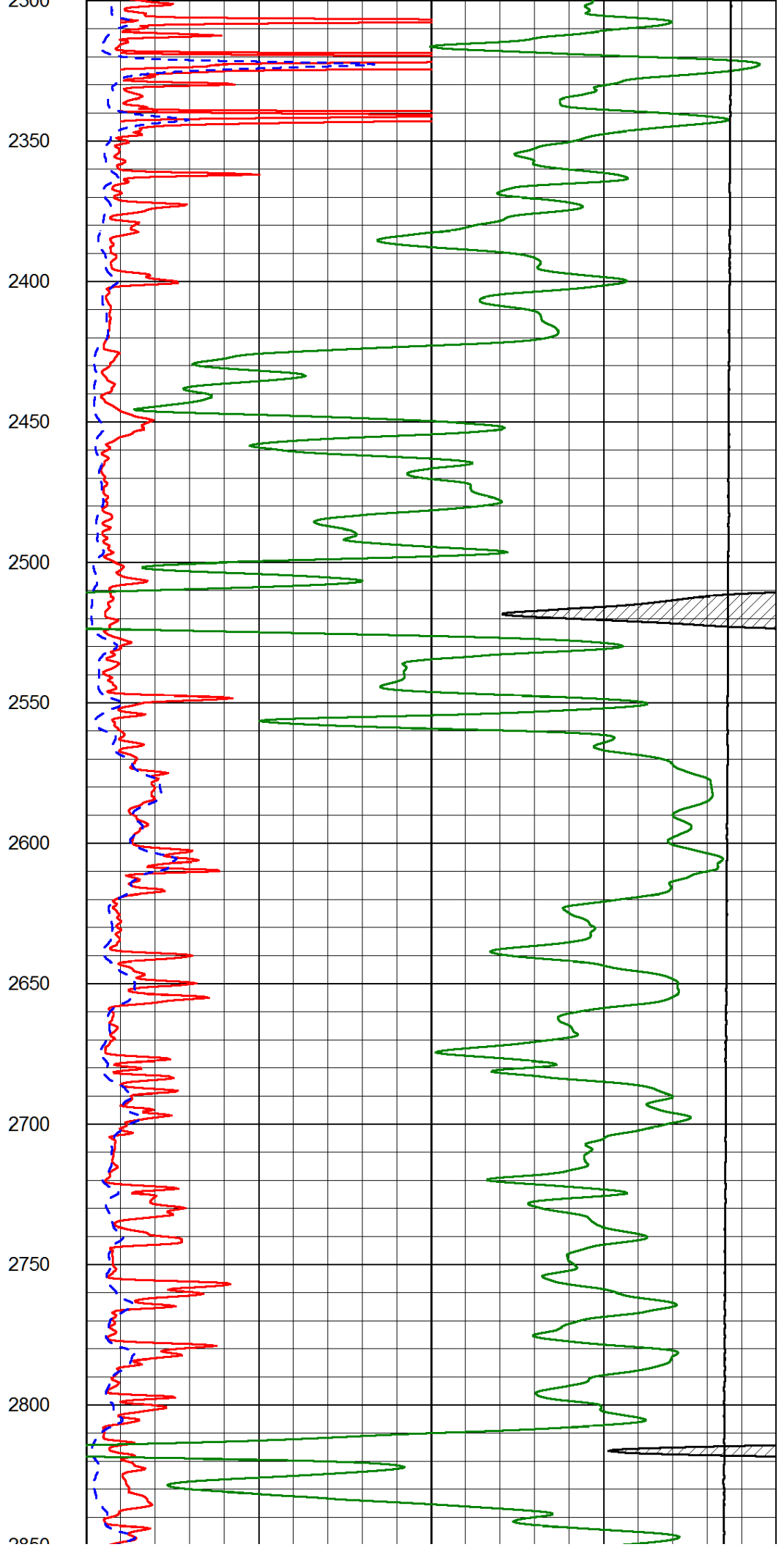
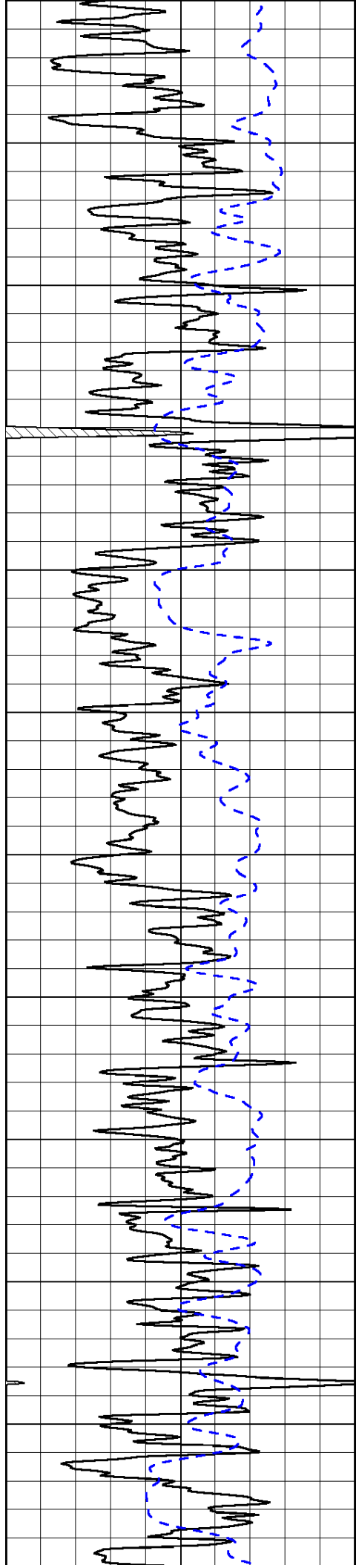
Shallow Resistivity		
50	(Ohm-m)	500
50	Deep Resistivity (Ohm-m)	500

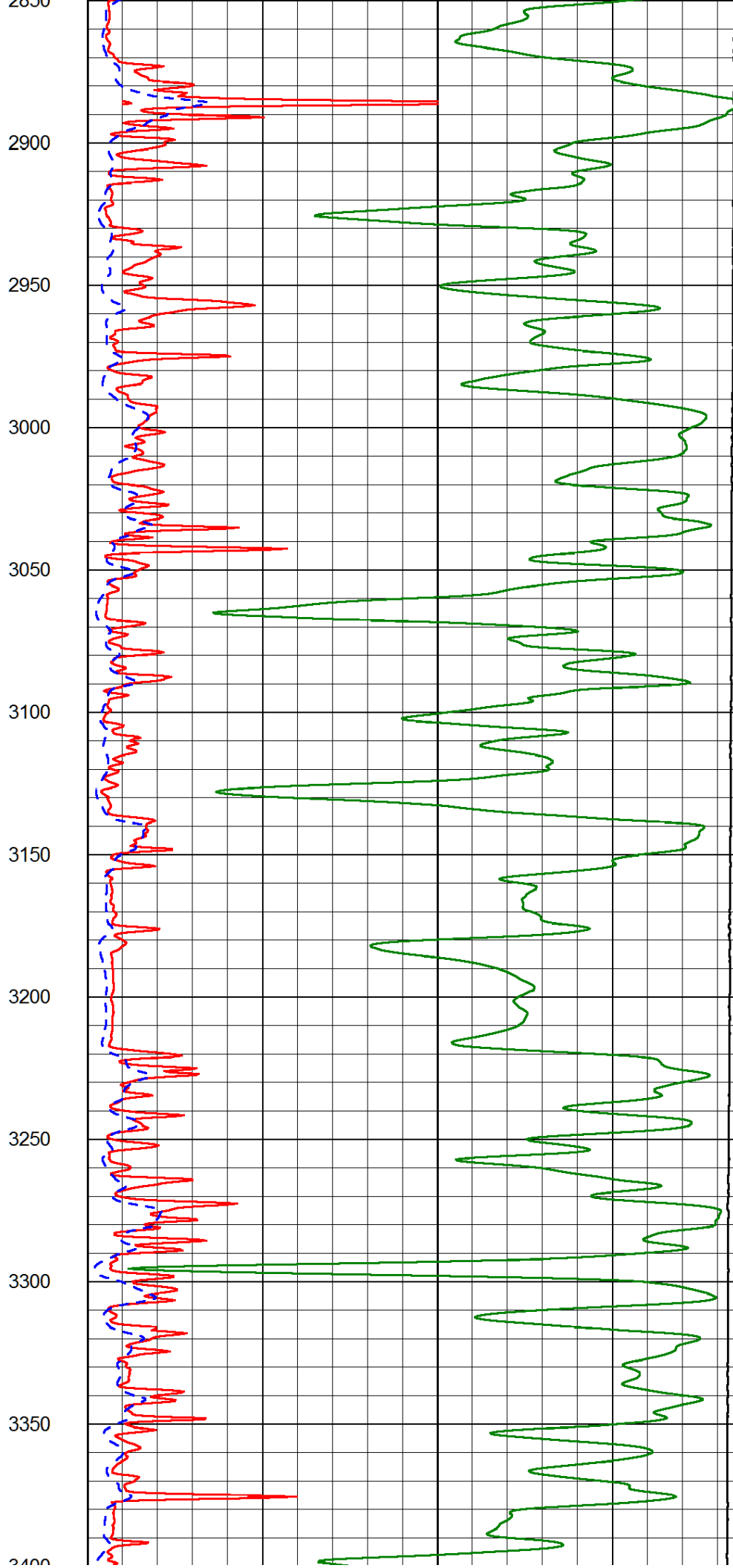
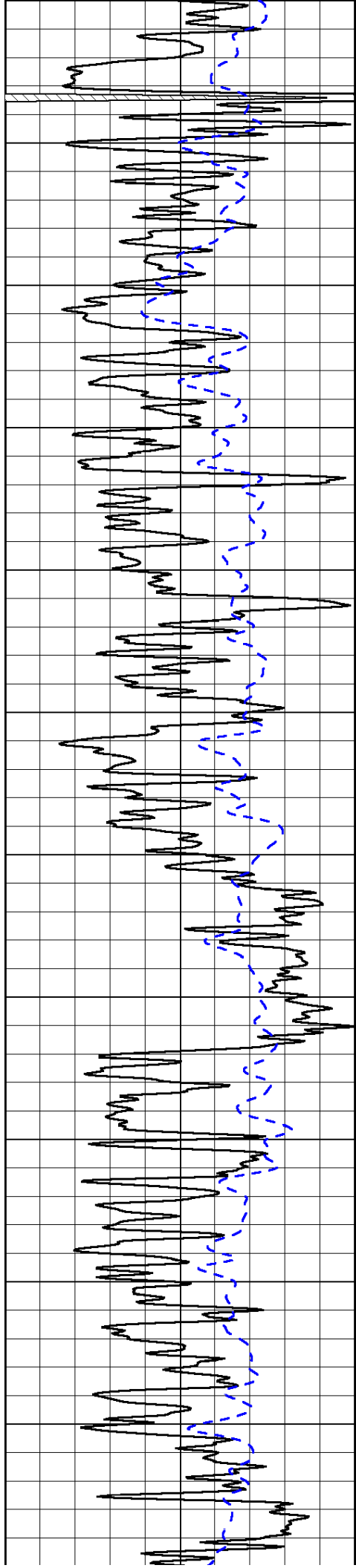


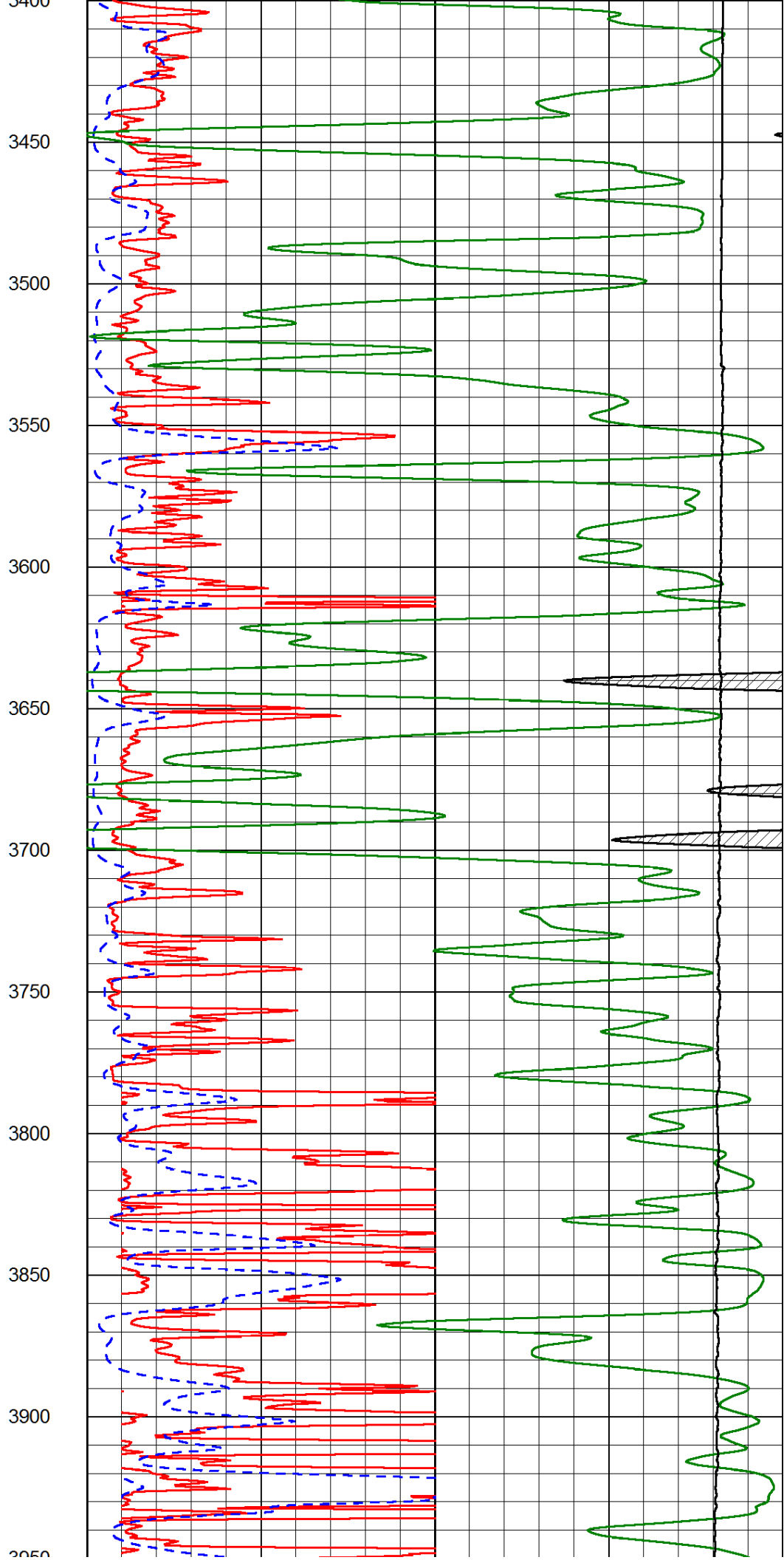
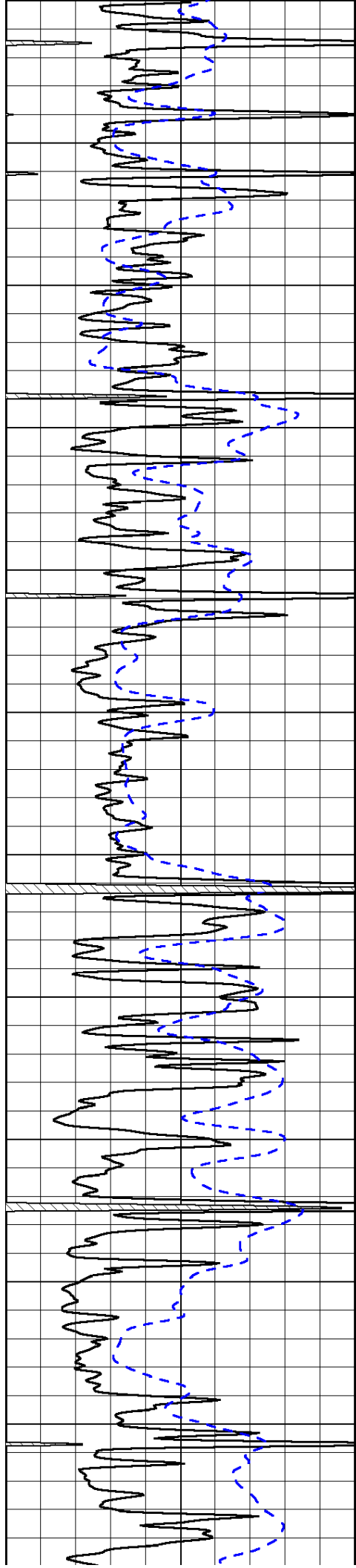


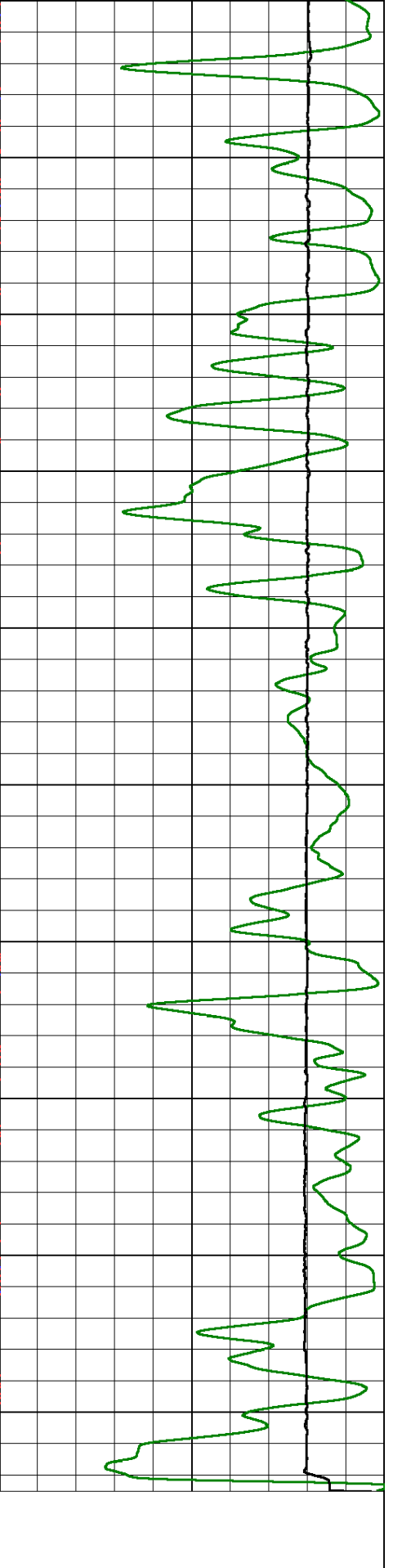
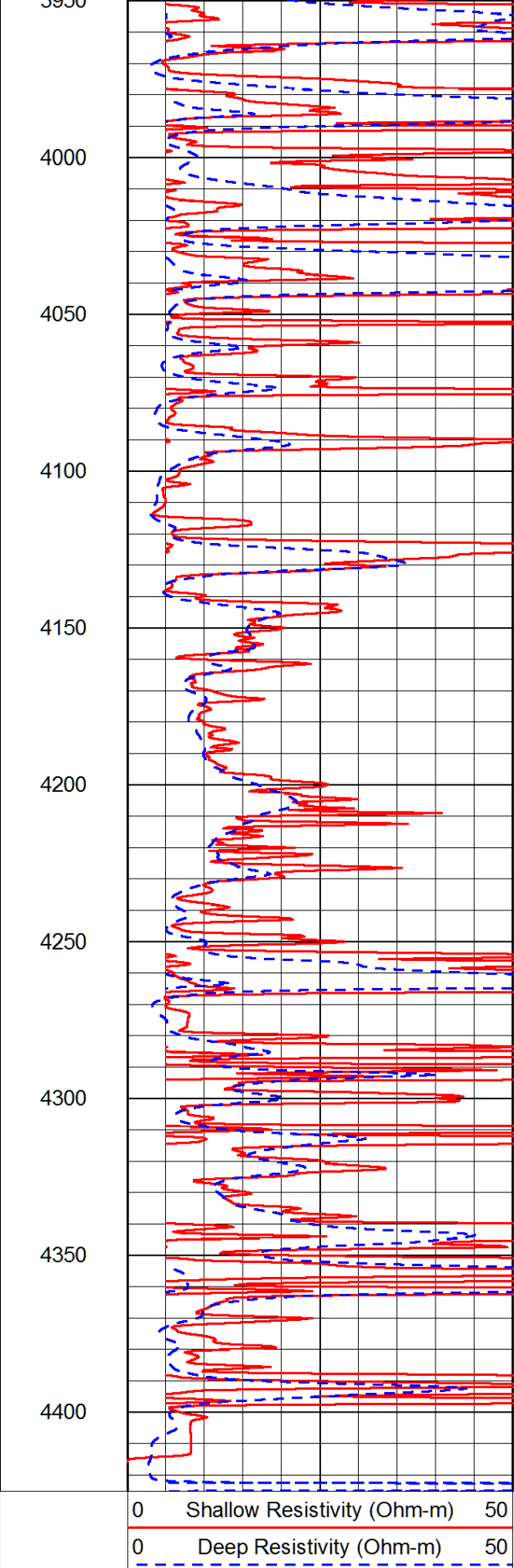
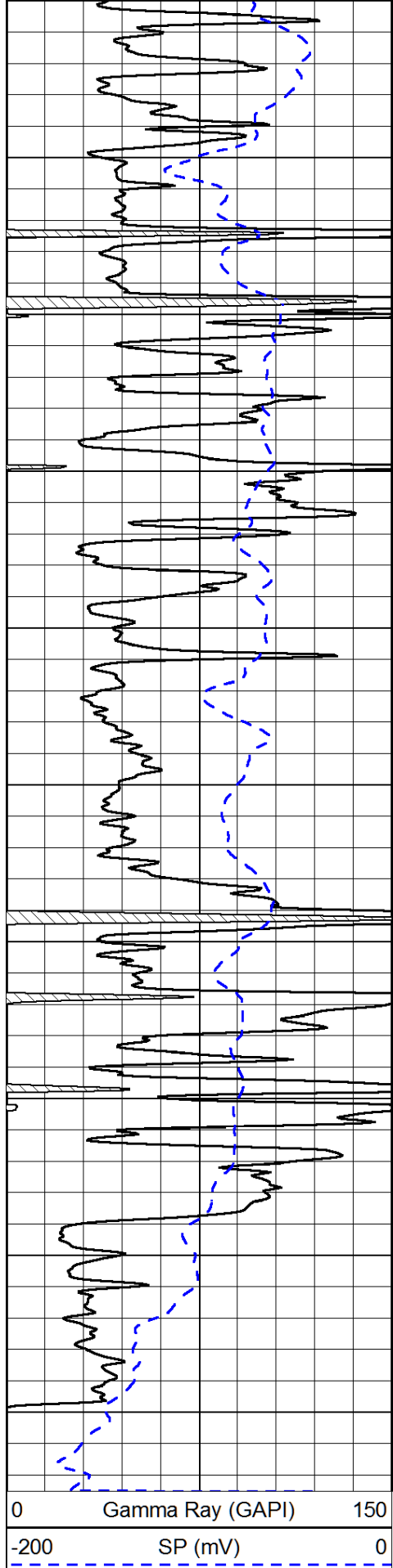












0 Gamma Ray (GAPI) 150
-200 SP (mV) 0

0 Shallow Resistivity (Ohm-m) 50
0 Deep Resistivity (Ohm-m) 50

1000 Conductivity (Ohm-m) 0
15000 Line Tension (lb) 0

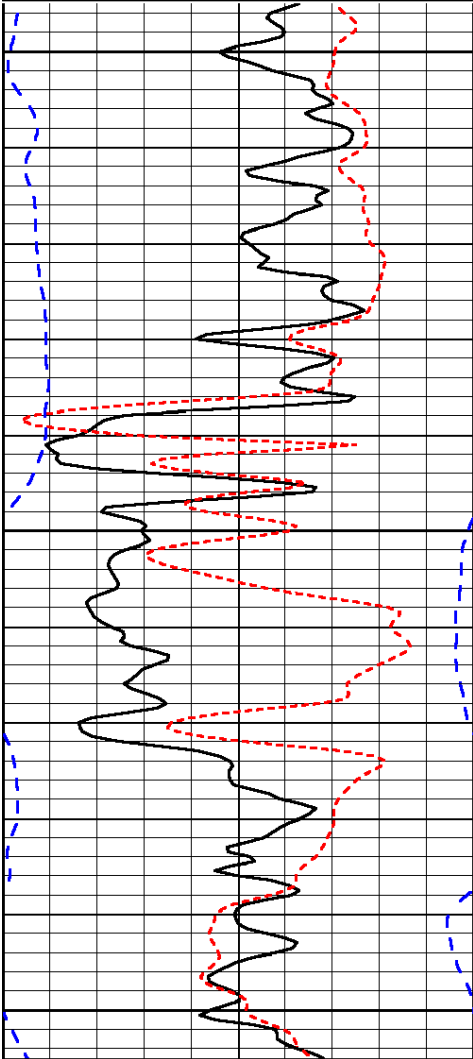
Shallow Resistivity
(Ohm-m) 50 500

Database File: amwarrior_rdt_unit_1hd.db
 Dataset Pathname: dil/awstck
 Presentation Format: dil
 Dataset Creation: Wed Dec 18 00:54:54 2013
 Charted by: Depth in Feet scaled 1:240

0	Gamma Ray (GAPI)	150
-160	RXO/RT	40
-200	SP (mV)	0

0.2	Deep Resistivity (Ohm-m)	2000
0.2	Medium Resistivity (Ohm-m)	2000
0.2	Shallow Resistivity (Ohm-m)	2000
10000	Line Tension (lb)	0

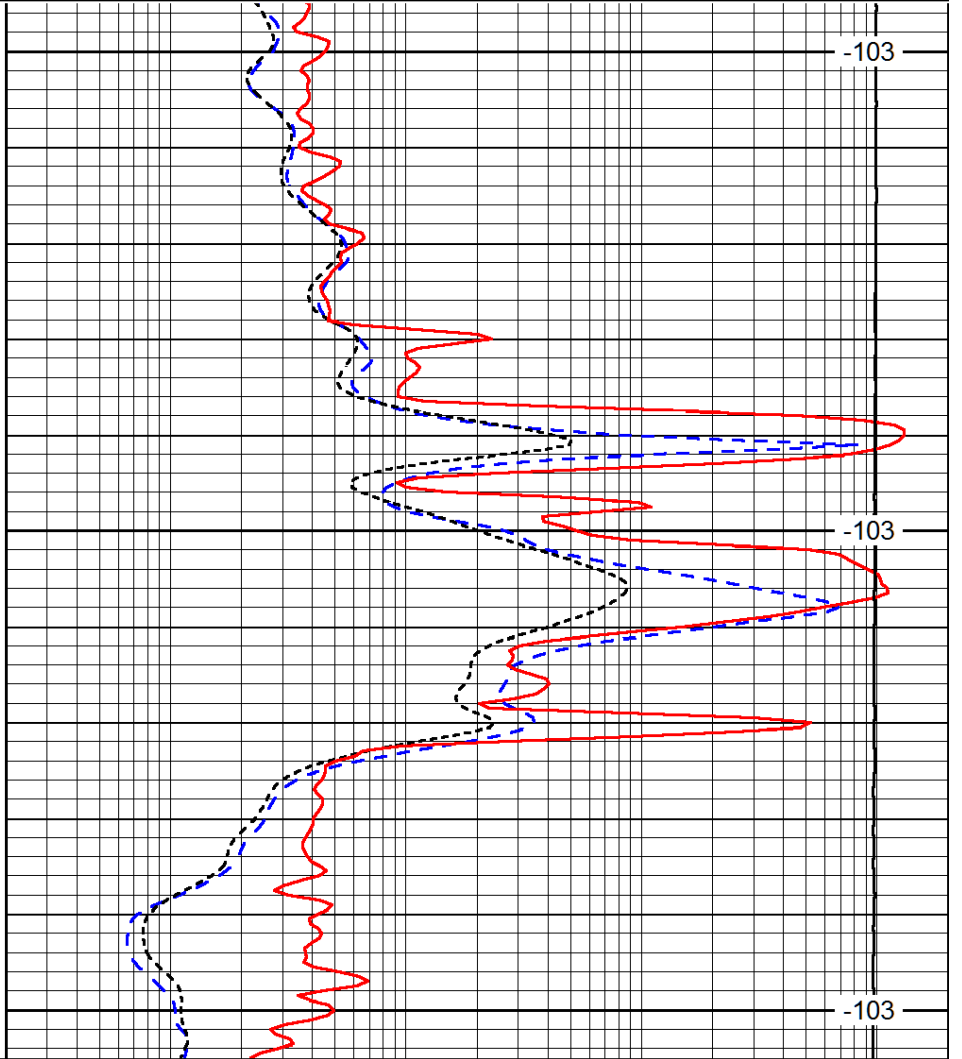
LSPD
(ft/min)



1500

1550

1600



-103

-103

-103

0	Gamma Ray (GAPI)	150
-160	RXO/RT	40
-200	SP (mV)	0

0.2	Deep Resistivity (Ohm-m)	2000
0.2	Medium Resistivity (Ohm-m)	2000
0.2	Shallow Resistivity (Ohm-m)	2000
10000	Line Tension (lb)	0

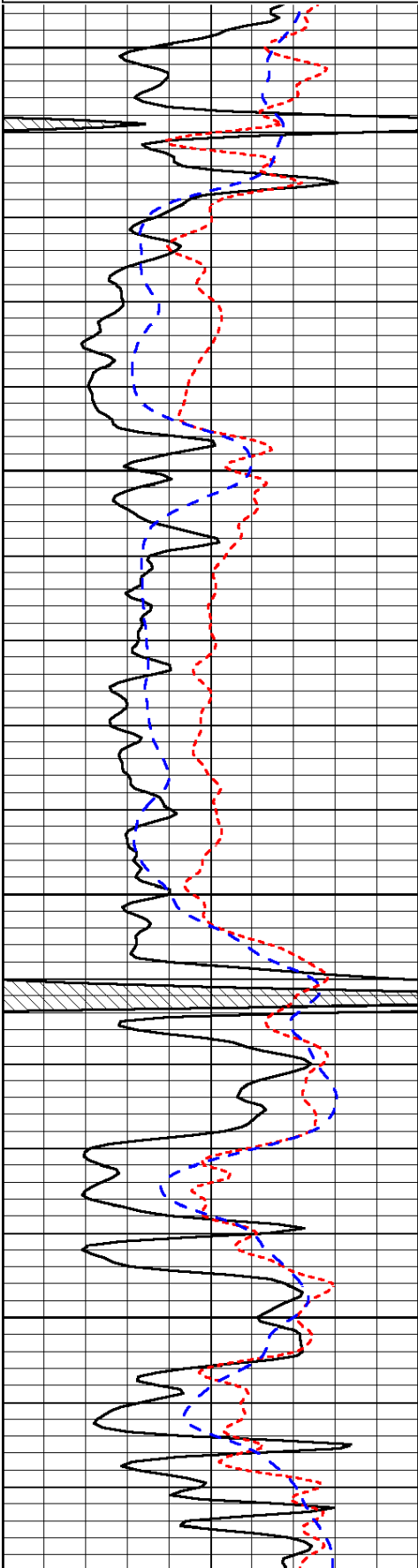
LSPD
(ft/min)

Database File: amwarrior_rdt_unit_1hd.db
 Dataset Pathname: dil/awstck
 Presentation Format: dil
 Dataset Creation: Wed Dec 18 00:54:54 2013

0	Gamma Ray (GAPI)	150
-160	RXO/RT	40
-200	SP (mV)	0

0.2	Deep Resistivity (Ohm-m)	2000
0.2	Medium Resistivity (Ohm-m)	2000
0.2	Shallow Resistivity (Ohm-m)	2000
10000	Line Tension (lb)	0

LSPD
(ft/min)

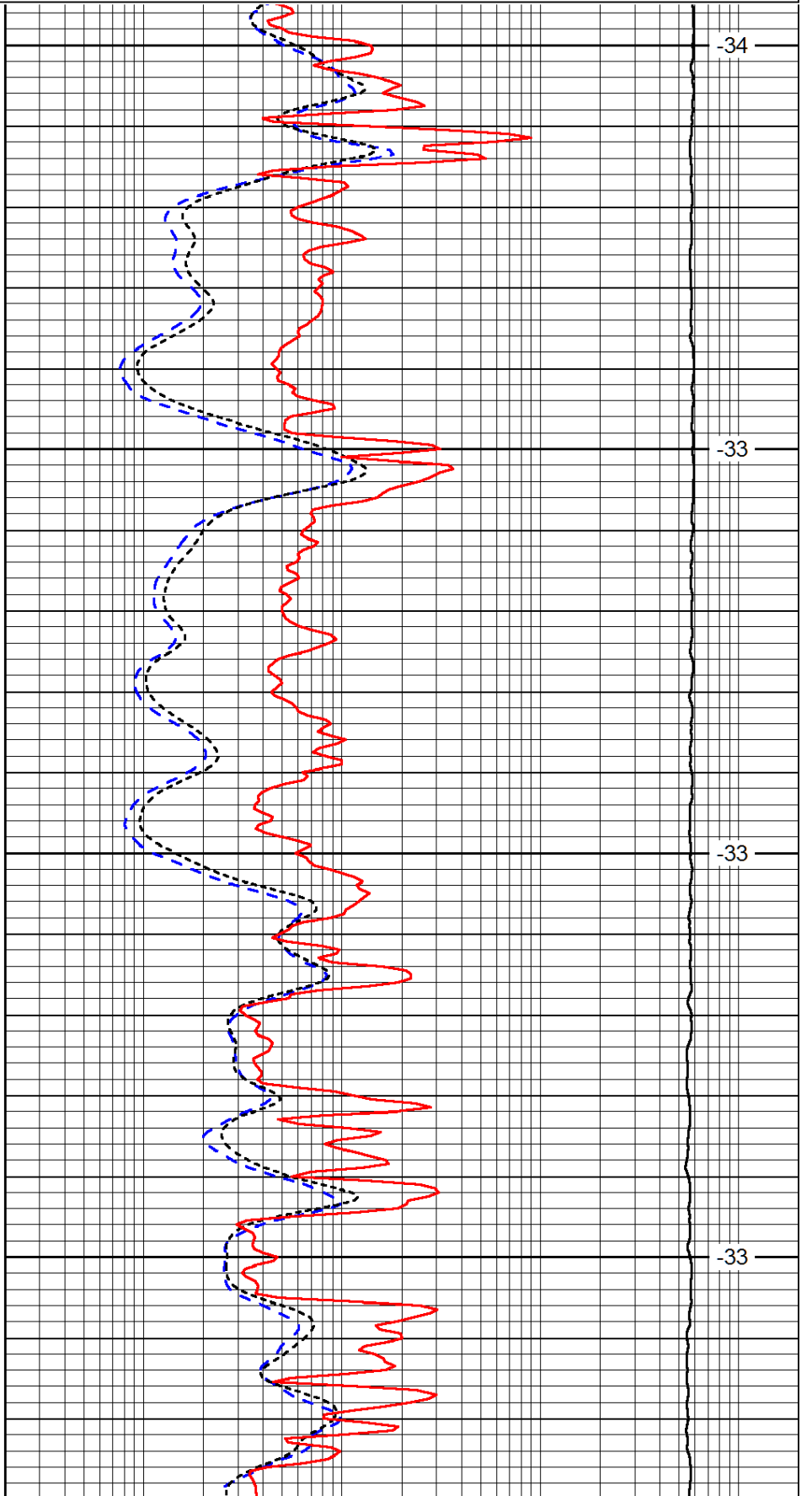


3600

3650

3700

3750

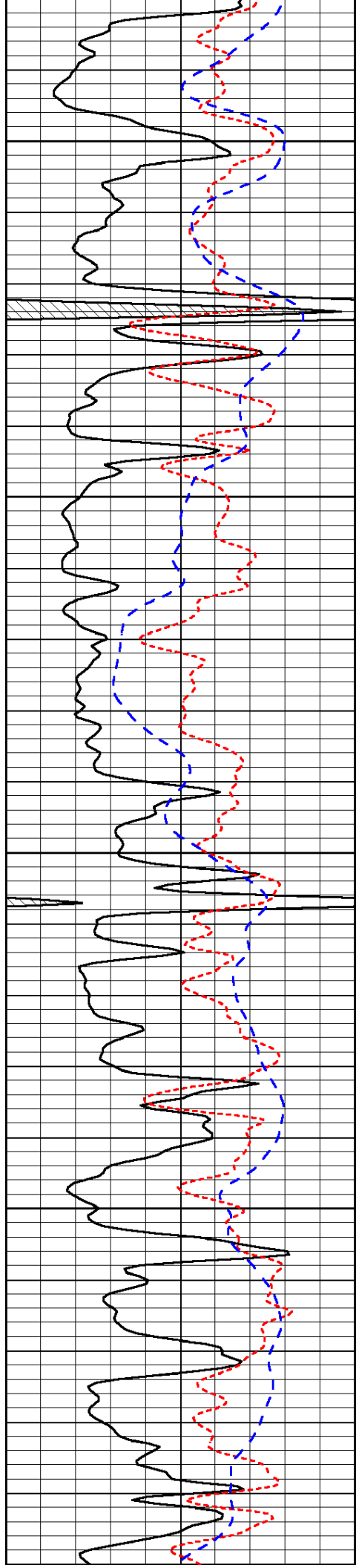


-34

-33

-33

-33



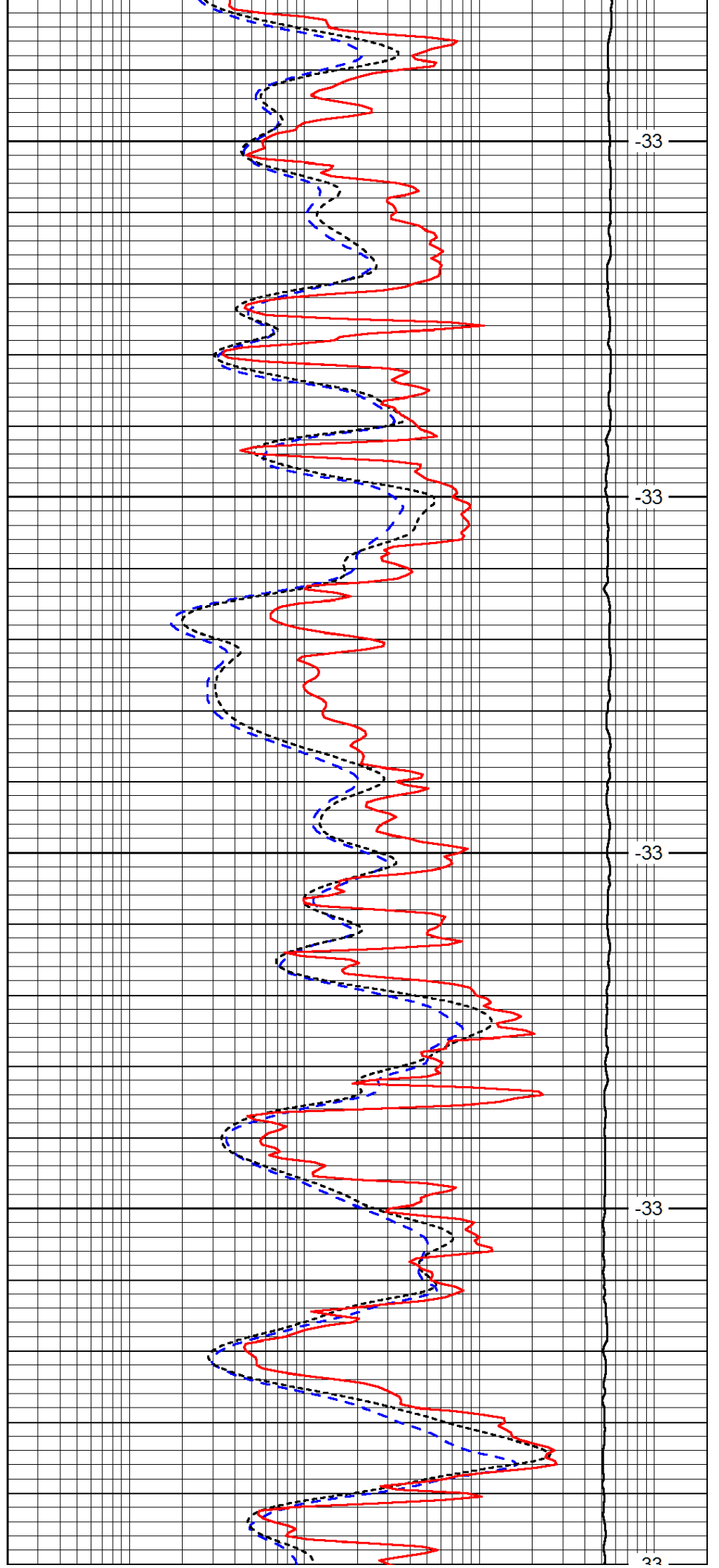
3800

3850

3900

3950

4000



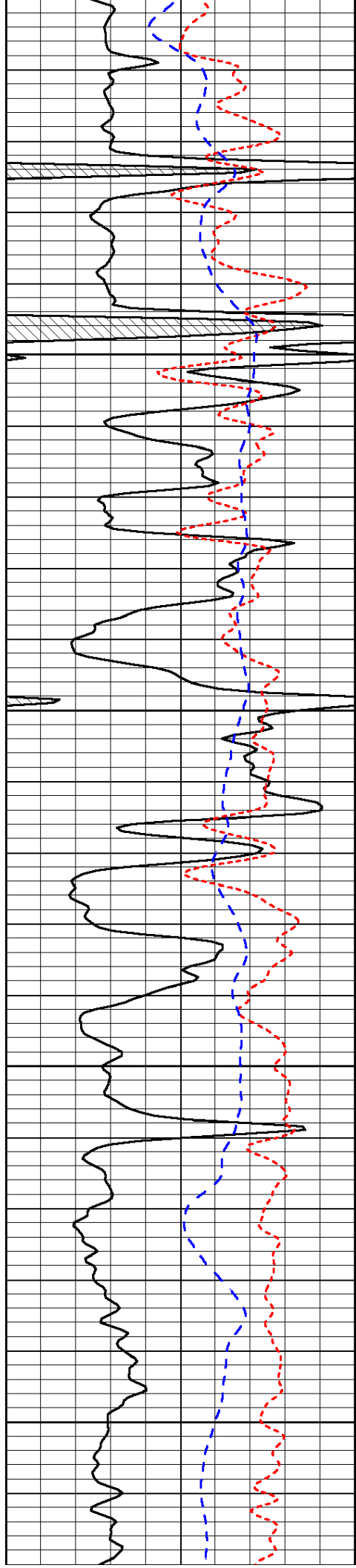
-33

-33

-33

-33

-33



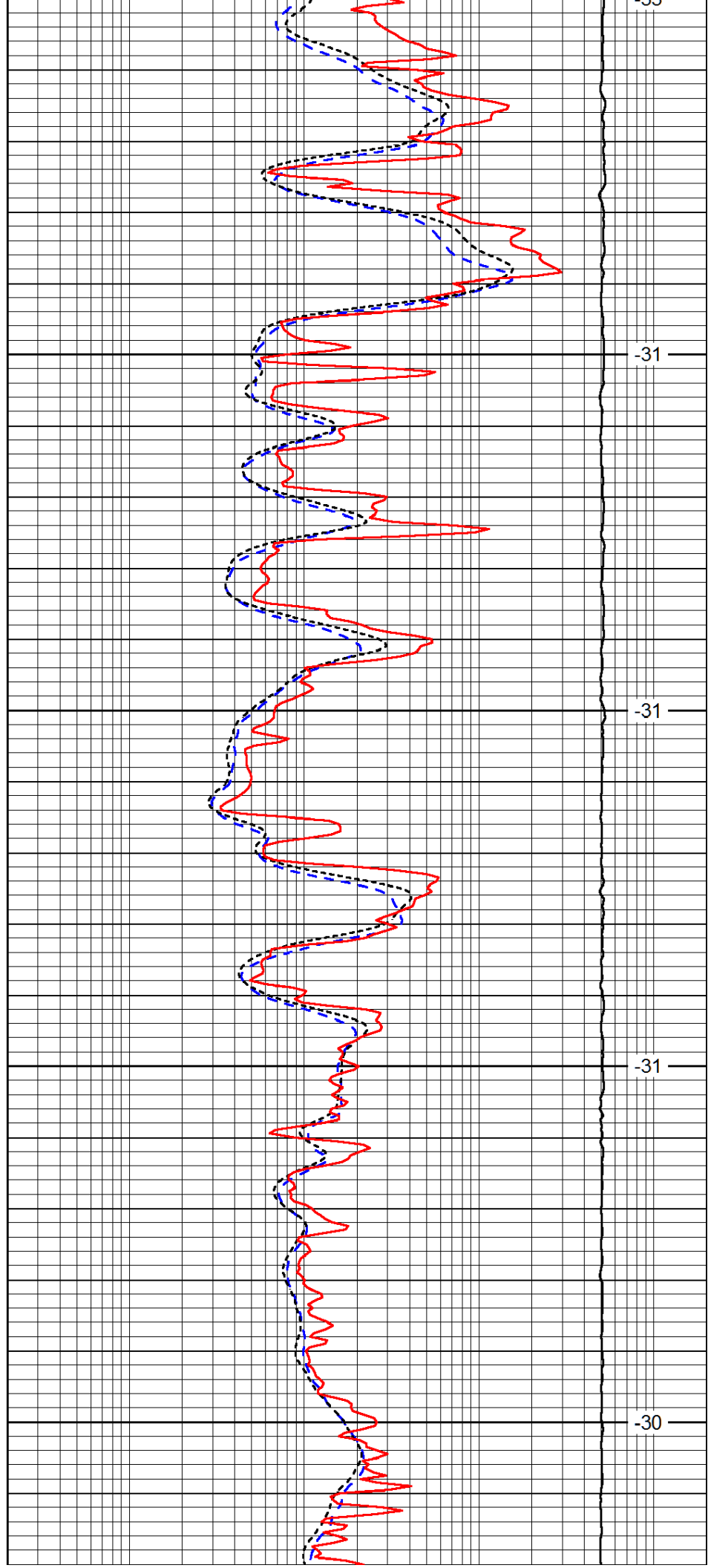
4000

4050

4100

4150

4200



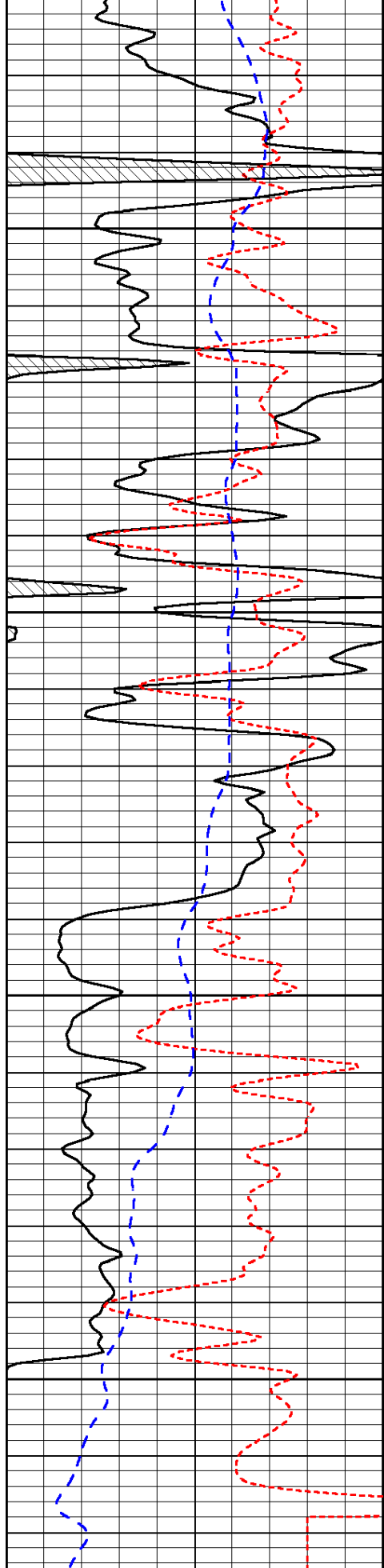
-33

-31

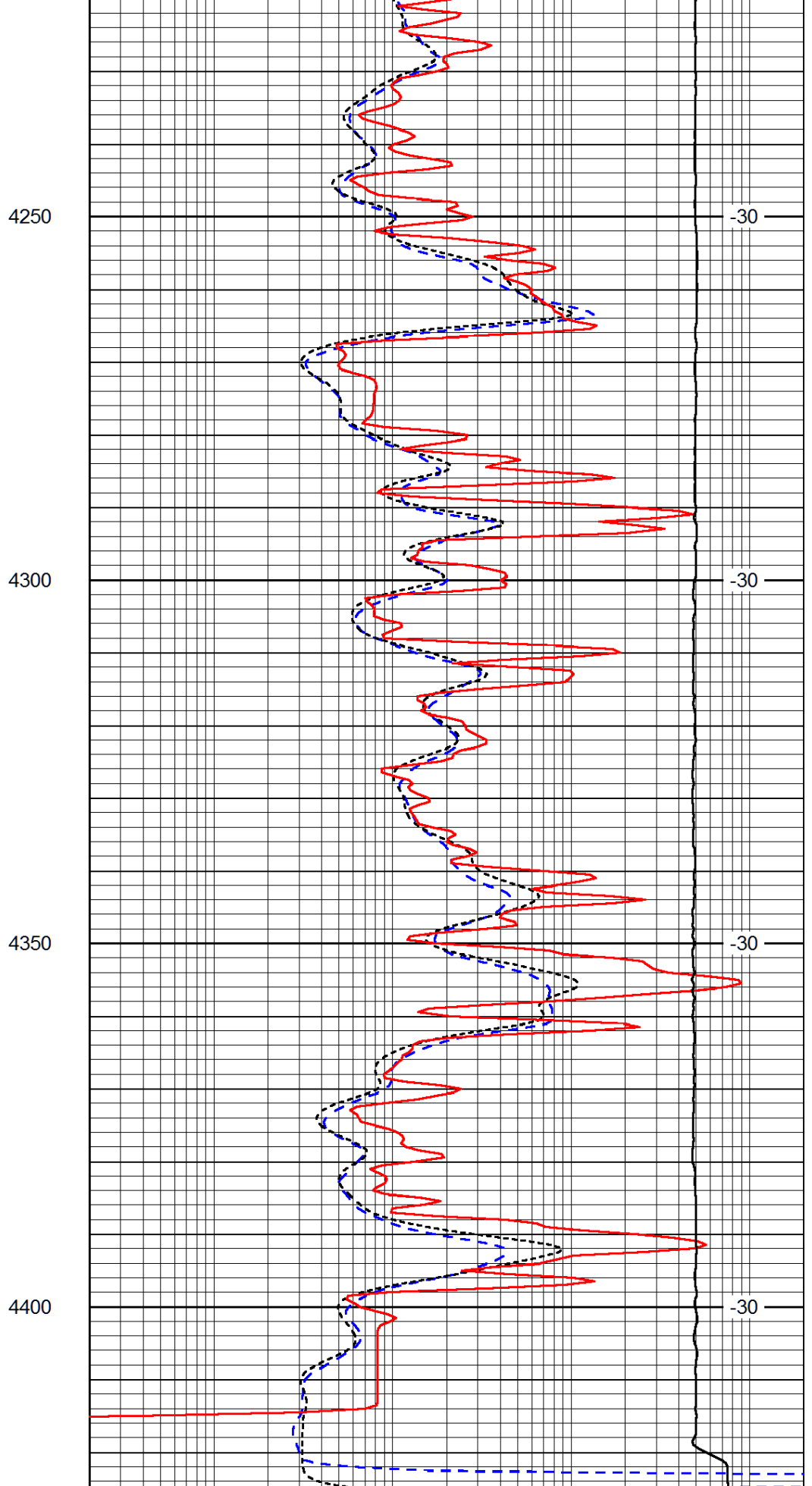
-31

-31

-30



0	Gamma Ray (GAPI)	150
-160	RXO/RT	40
-200	SP (mV)	0



0.2	Deep Resistivity (Ohm-m)	2000
0.2	Medium Resistivity (Ohm-m)	2000
0.2	Shallow Resistivity (Ohm-m)	2000

10000

Line Tension (lb)

0

LSPD
(ft/min)