



CHAUWTE, KANSAS

**GAMMA RAY
NEUTRON
COMPLETION LOG**

Company	A X & P, INC.	Well	UNIT 1 - ROGERS ROG #2C
Field	NEODESHA	County	WILSON
State	KANSAS	Location:	485' FUL & 4560' FEL SW NE NW NW
Company	A X & P, INC.	Well	UNIT 1 - ROGERS ROG #2C
Field	NEODESHA	County	WILSON
State	KANSAS	Location:	AP# : 15-205-28215-00-00
Permanent Datum	SEC 29 TWP 30S RGE 16E	Elevation	80' TEST
Log Measured From	GL	Elevation	80' TEST
Drilling Measured From	GL	K.B. Elevation	D.F. 80' TEST
Date	9-6-13	Other Services	
Run Number	1 NW		
Depth Driller	855'		
Depth Logger	846.9'		
Top Log Interval	0		
Bottom Logged Interval	846.9'		
Fluid Level	FULL		
Production Casing	WATER		
Max. Recorded Temp.	2 7/8" @ TD		
Estimated Cement Top			
Amount & Type Cement			
Drilling Contractor	103		
Equipment Number			
Location	SCOMON, B		
Recorded By	HANKE, JI		
Witnessed By			

<<< Fold Here >>>

All interpretations are opinions based on inferences from electrical or other measurements and we cannot and do not guarantee the accuracy or correctness of any interpretation, and we shall not, except in the case of gross or willful negligence on our part, be liable or responsible for any loss, costs, damages, or expenses incurred or sustained by anyone resulting from any interpretation made by any of our officers, agents or employees. These interpretations are also subject to our general terms and conditions set out in our current Price Schedule.

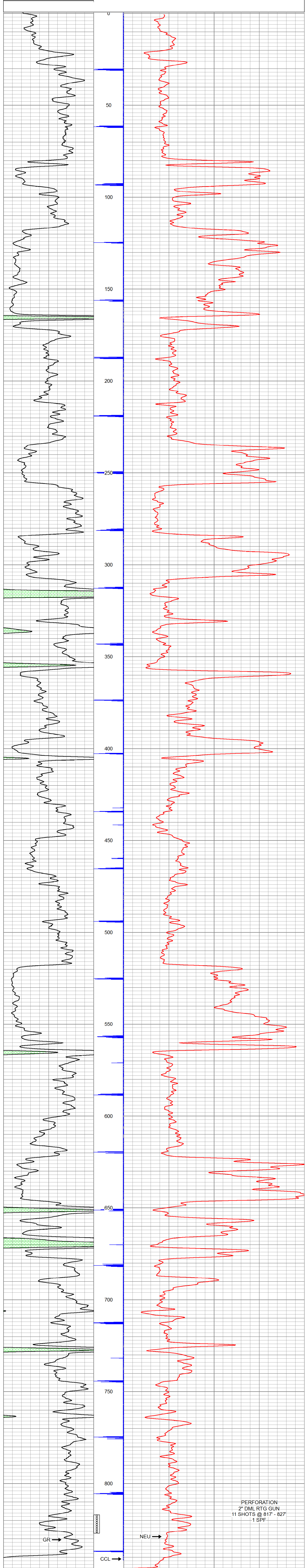
Comments

THANK YOU

Sensor	Offset (ft)	Schematic	Description	Len (ft)	OD (in)	Wt (lb)
GR	7.59		GR-TITAN_169 (TIT169_001) Titan 1 11/16" Gamma Ray	4.75	1.69	20.00
CCL	5.05		CCL-TITAN_169 (TIT169) Titan 1 11/16" Logging CCL	1.83	1.69	7.50
NEU	0.63		NEU-TITAN (TIT801) TITAN 1 11/16" Neutron	4.33	1.69	25.00

Dataset: UNIT 1 - ROGERS ROG # 2C.db: field/well/run/1/pass1
 Total Length: 10.92 ft
 Total Weight: 52.50 lb
 O.D.: 1.69 in

Database File: f:\unit 1 - rogers rog # 2c.db
 Dataset Pathname: pass1
 Presentation Format: gr-n-ccl
 Dataset Creation: Fri Sep 06 13:19:02 2013 by Log Std Casedhole 09061
 Charted by: Depth in Feet scaled 1:240



PERFORATION
 2" DML RTG GUN
 11 SHOTS @ 817' - 827'
 1 SPF

Company	A X & P, INC.	Date	9-6-13
Well	UNIT 1 - ROGERS ROG #2C		
Field	NEODESHA		
County	WILSON SEC 29 TWP 30S RGE 16E		
State	KANSAS		

