

MIDWEST SURVEYS
 LOGGING - PERFORATING - CONSULTING SERVICES
 P.O. Box 68, Osawatomie, KS 68064
 913.735.2128

GAMMA RAY / NEUTRON / CCL

File No. _____

Company **Altavista Energy, Inc.**

Well **Thomas NO - 9**

Field **Wildcat**

County **Coffey**

State **Kansas**

Location **4125' FSL & 4455' FEL
SM-SE-NM-NW**

Other Services
Perforate

Sec. **23** Twp. **22s** Rge. **16e** Elevation **1036'**

Permanent Datum **GL** Elevation **1036'** Elevation **KB NA**

Log Measured From **GL** D.F. **NA**

Drilling Measured From **GL** G.L. **1036'**

Date **12-16-2013**

Run Number **One**

Depth Driller **1111.0**

Bottom Logged Interval **1068.8**

Top Log Interval **1067.8**

Fluid Level **200.0**

Fluid Level **Fill**

Type Fluid **Water**

Density / Viscosity **NA**

Salinity - PPM Cl **NA**

Max Recorded Temp **NA**

Estimated Cement Top **0.0**

Equipment No. **102** Location **Osawatomie**

Recorded By **Garj Wundisch**

Witnessed By **Doug Evans**

BORE-HOLE RECORD

RUN No. **BIT** **FROM** **TO** **SIZE** **WGT** **FROM** **TO**

One **12.25"** **0.0** **47.15** **7.00"** **19.0#** **0.0** **47.15**

Two **5.575"** **47.15** **1111.0** **2.875"** **6.5#** **0.0** **1101.46**

Battle **Set** **At** **1070.06**

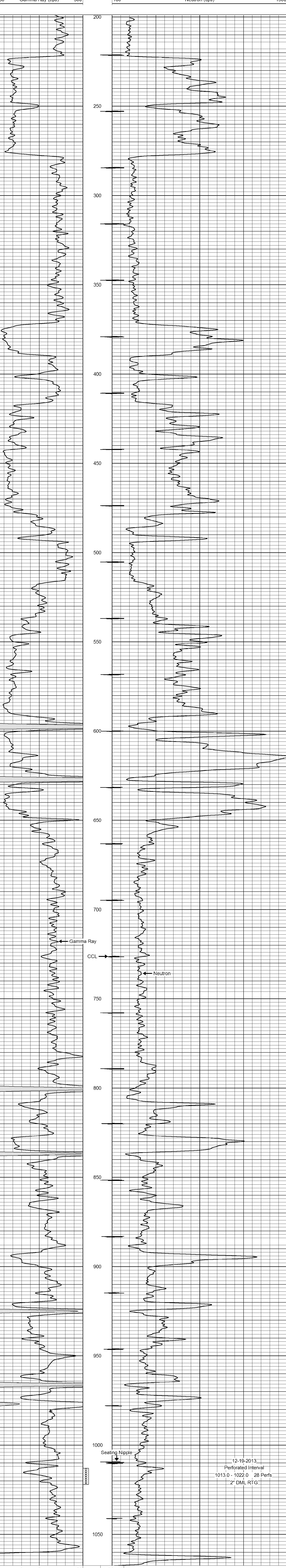
<<< Fold Here >>>

All interpretations are opinions based on inferences from electrical or other measurements and we cannot and do not guarantee the accuracy or correctness of any interpretation, and we shall not, except in the case of gross or willful negligence on our part, be liable or responsible for any loss, costs, damages, or expenses incurred or sustained by anyone resulting from any interpretation made by any of our officers, agents or employees. These interpretations are also subject to our general terms and conditions set out in our current Price Schedule.

Comments

Drilling Contractor :
Finney Drilling, Company

Database File: thomas9m.db
 Dataset Pathname: pass1
 Presentation Format: gr-n-ccl
 Dataset Creation: Mon Dec 16 11:21:24 2013 by Log SCH 111116
 Charted by: Depth in Feet scaled 1:240



12-19-2013
 Perforated Interval
 1013.0 - 1022.0 28 Perfs
 2" DML RTG

0 Gamma Ray (cps) 150
 150 Gamma Ray (cps) 300
 -1 CCL 1
 100 Neutron (cps) 1900