



**COMPLETION  
& PRODUCTION  
SERVICES CO.**

**SONIC  
LOG**

Company PELICAN HILL OIL & GAS, INC.  
Well T-NELSON #2-30  
Field WILDCAT  
County GOVE State KANSAS

Company PELICAN HILL OIL & GAS, INC.  
Well T-NELSON #2-30  
Field WILDCAT  
County GOVE  
State KANSAS

Location: API #: 15-063-22161.00.00  
335' FNL & 2075' FEL  
SE - NW - NW - NE/4  
SEC 30 TWP 14S RGE 31W  
Permanent Datum GROUND LEVEL Elevation 2778  
Log Measured From KELLY BUSHING 10' A.G.L.  
Drilling Measured From KELLY BUSHING  
Other Services  
CNL/CDL/DIL  
MEL/FRAC  
Elevation  
K.B. 2788  
D.F. 2786  
G.L. 2778

Date	11-29-13		
Run Number	TW0		
Depth Driller	4544		
Depth Logger	4554		
Bottom Logged Interval	4553		
Top Log Interval	3650		
Casing Driller	8 5/8 @ 256'		
Casing Logger	258'		
Bit Size	7.875		
Type Fluid in Hole	CHEMICAL MUD	CHLORIDES 3.000	
Density / Viscosity	9.3 / 55		
pH / Fluid Loss	10.5 / 6.4		
Source of Sample	FLOWLINE		
Rim @ Meas. Temp	0.95 @ 69F		
Rmf @ Meas. Temp	0.71 @ 69F		
Rmc @ Meas. Temp	1.14 @ 69F		
Source of Rmf / Rmc	MEASURED		
Rim @ BHT	0.50 @ 129F		
Time Circulation Stopped	2 HOURS		
Time Logger on Bottom			
Maximum Recorded Temperature	129F		
Equipment Number	860		
Location	HAYS, KS.		
Recorded By	IAN MABB		
Witnessed By	ROGER FISHER		

<<< Fold Here >>>

All interpretations are opinions based on inferences from electrical or other measurements and we cannot and do not guarantee the accuracy or correctness of any interpretation, and we shall not, except in the case of gross or willful negligence on our part, be liable or responsible for any loss, costs, damages, or expenses incurred or sustained by anyone resulting from any interpretation made by any of our officers, agents or employees. These interpretations are also subject to our general terms and conditions set out in our current Price Schedule.

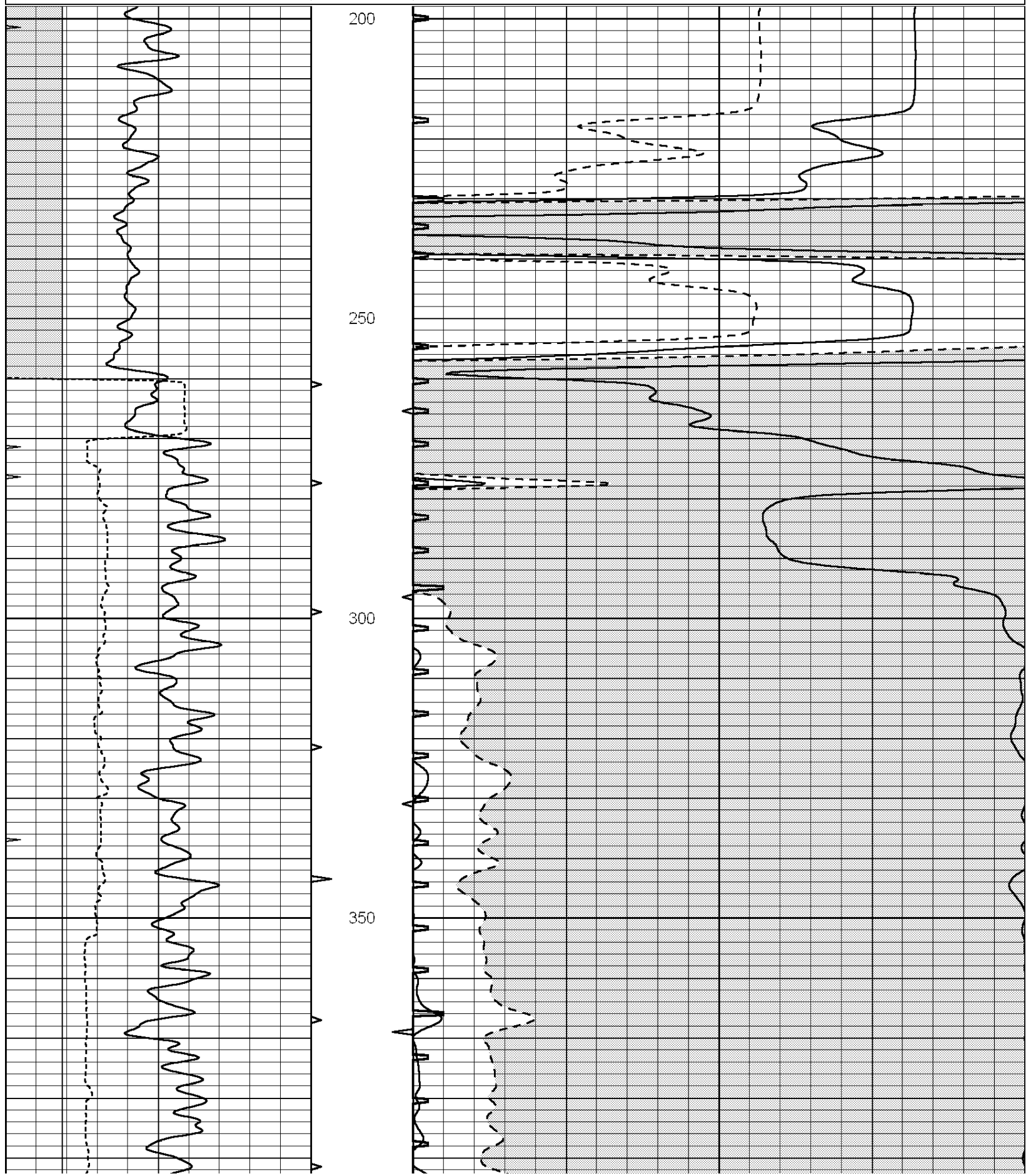
**Comments**

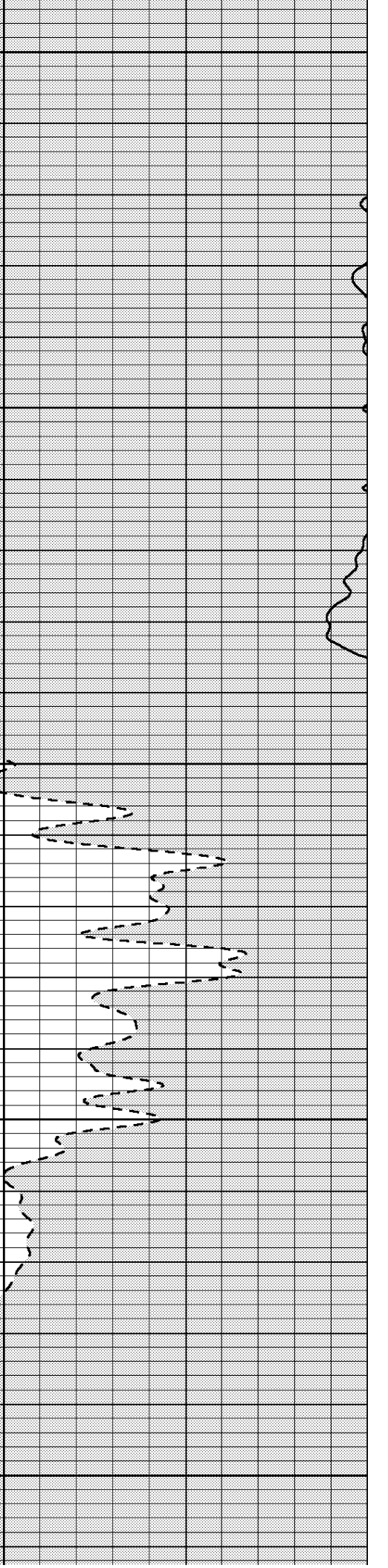
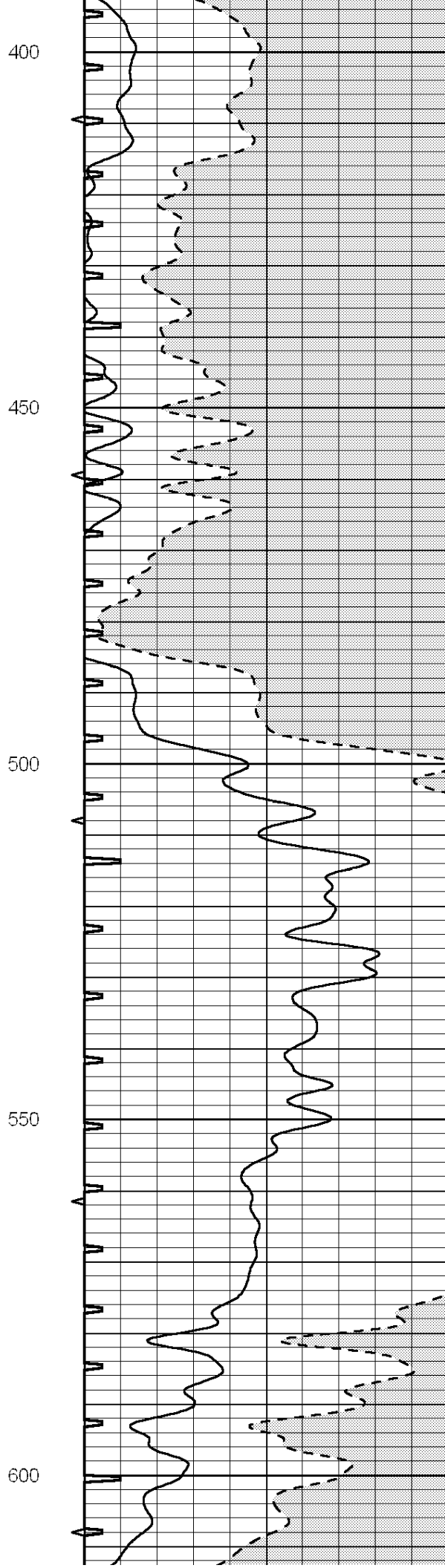
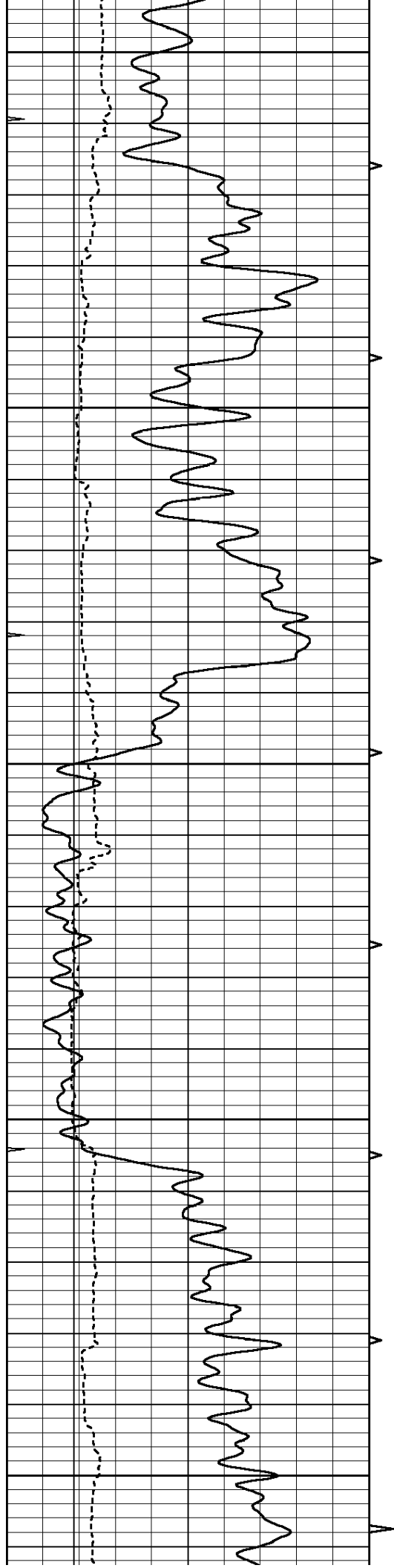
**NABORS COMPLETION & PRODUCTION SERVICES  
785-628-6395**

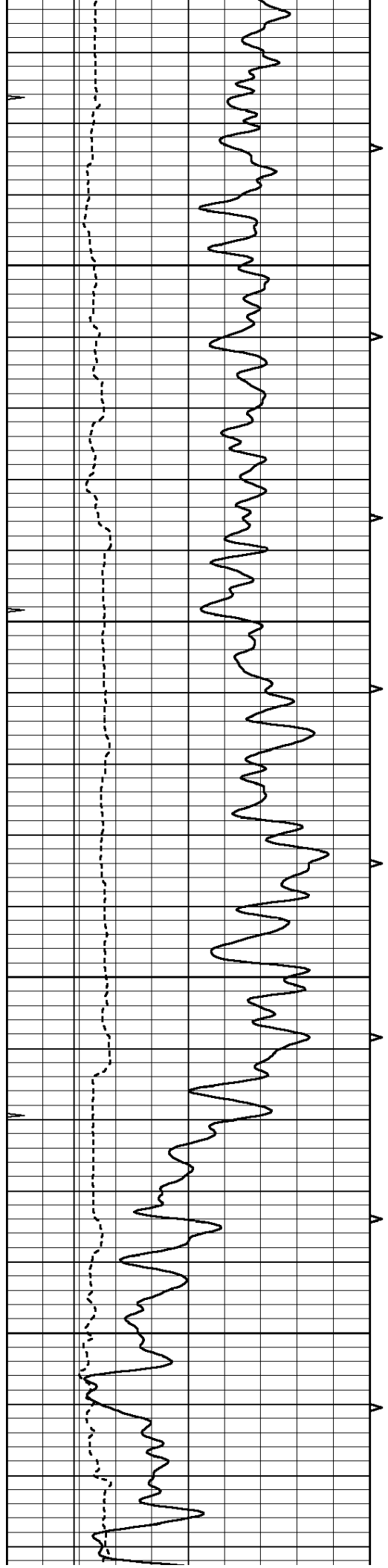
**THANK YOU FOR YOUR BUSINESS**

**DIRECTIONS: OAKLEY, KS. - 20 MILES SOUTH TO JAYHAWK RD. - 3 MILES EAST TO GOVE 14  
AFTER THE SECOND CATTLE GUARD WEST INTO**

0	GAMMA RAY (GAPI)	150	ABHV	140	DELTA TIME (usec/ft)	40
6	MELCAL (in)	16	10 (ft3)	0 30	SONIC POROSITY (pu)	-10
0	MINMK	20	TBHV	0	ITT (msec)	20
			0 (ft3)	10		





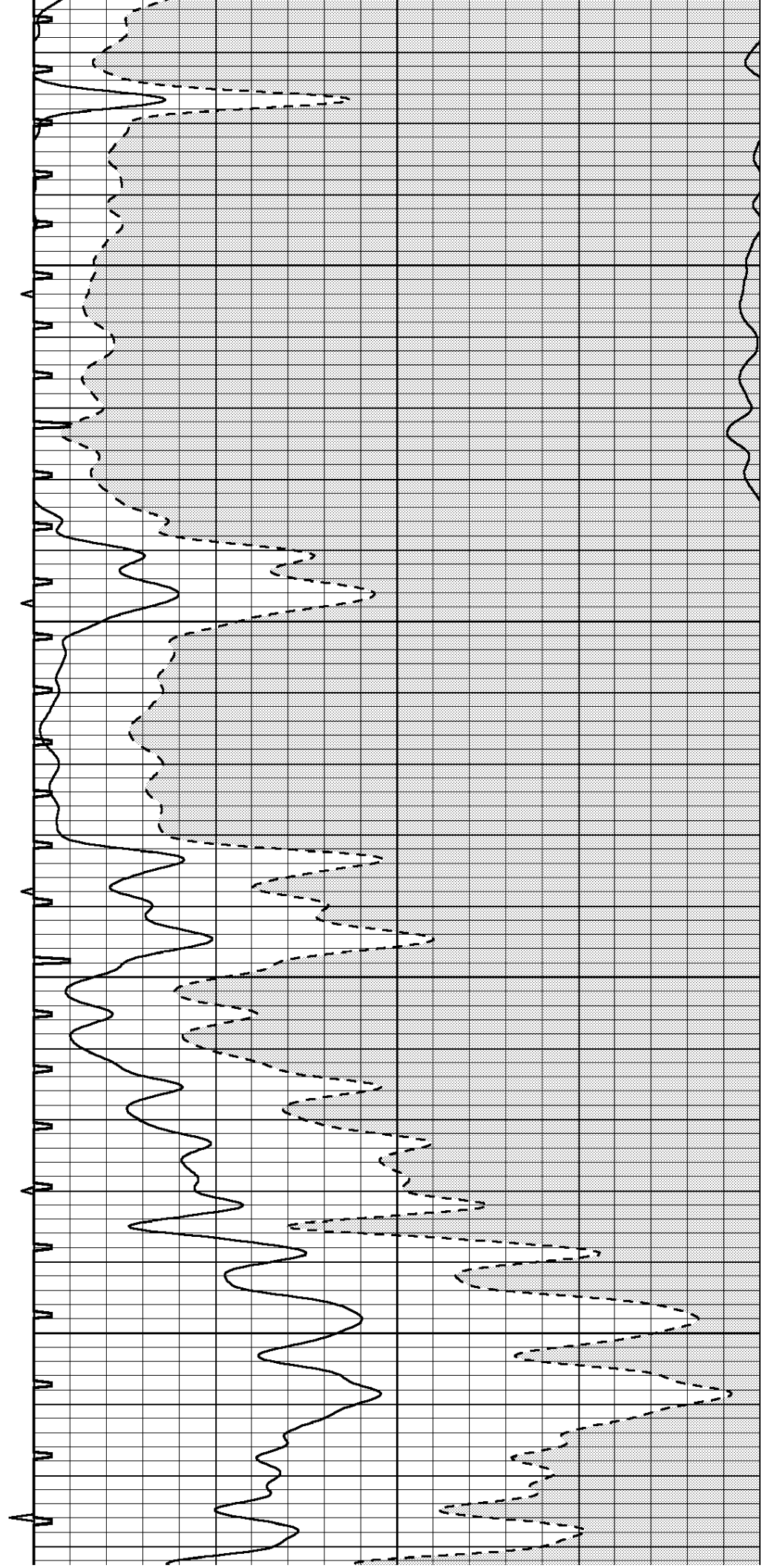


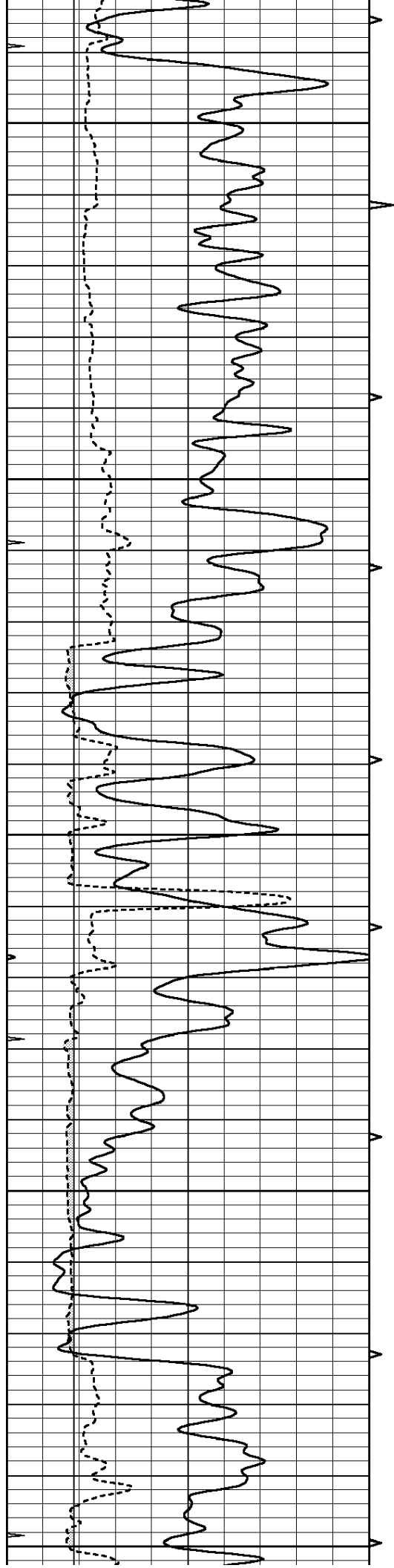
650

700

750

800





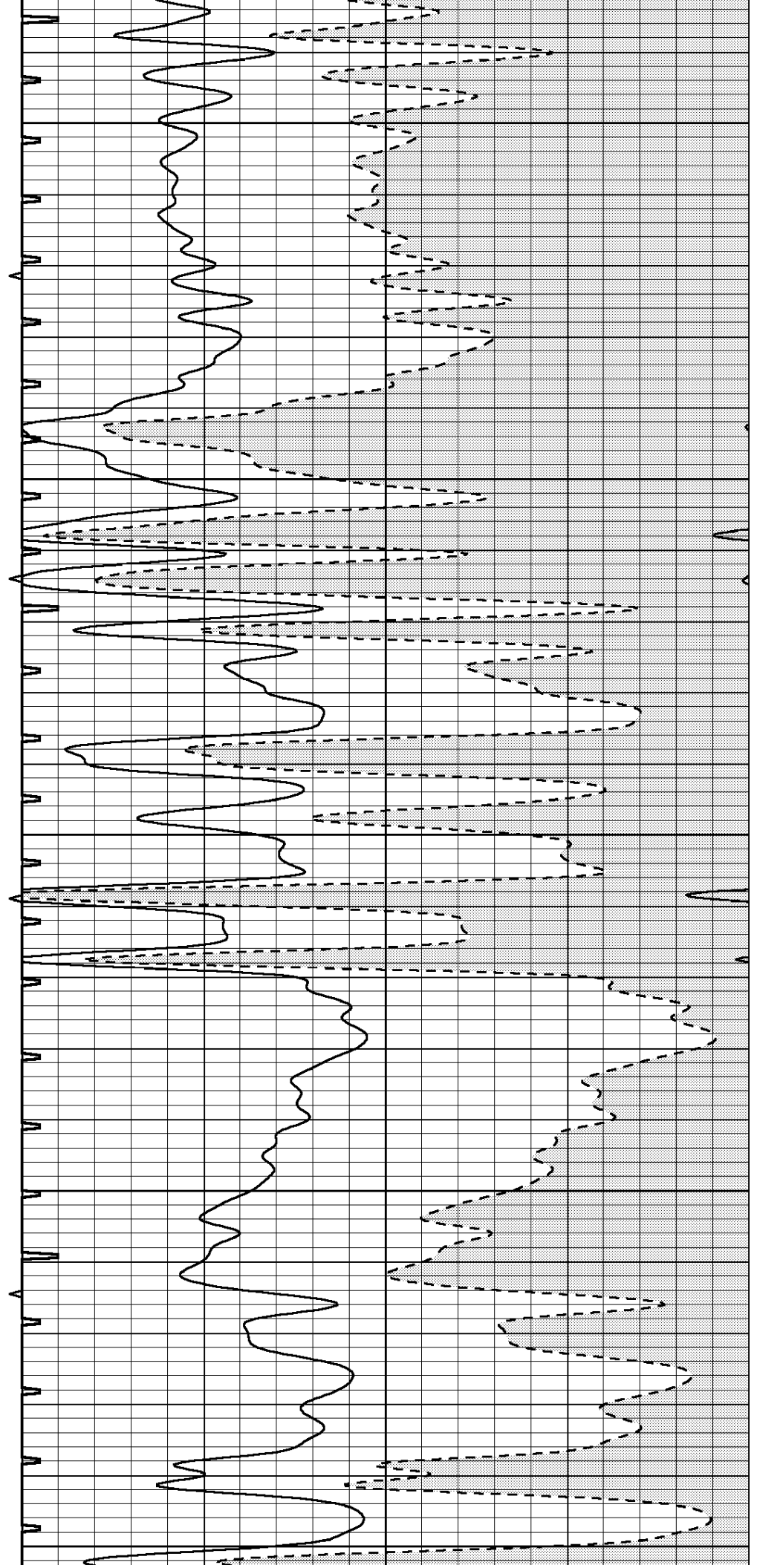
850

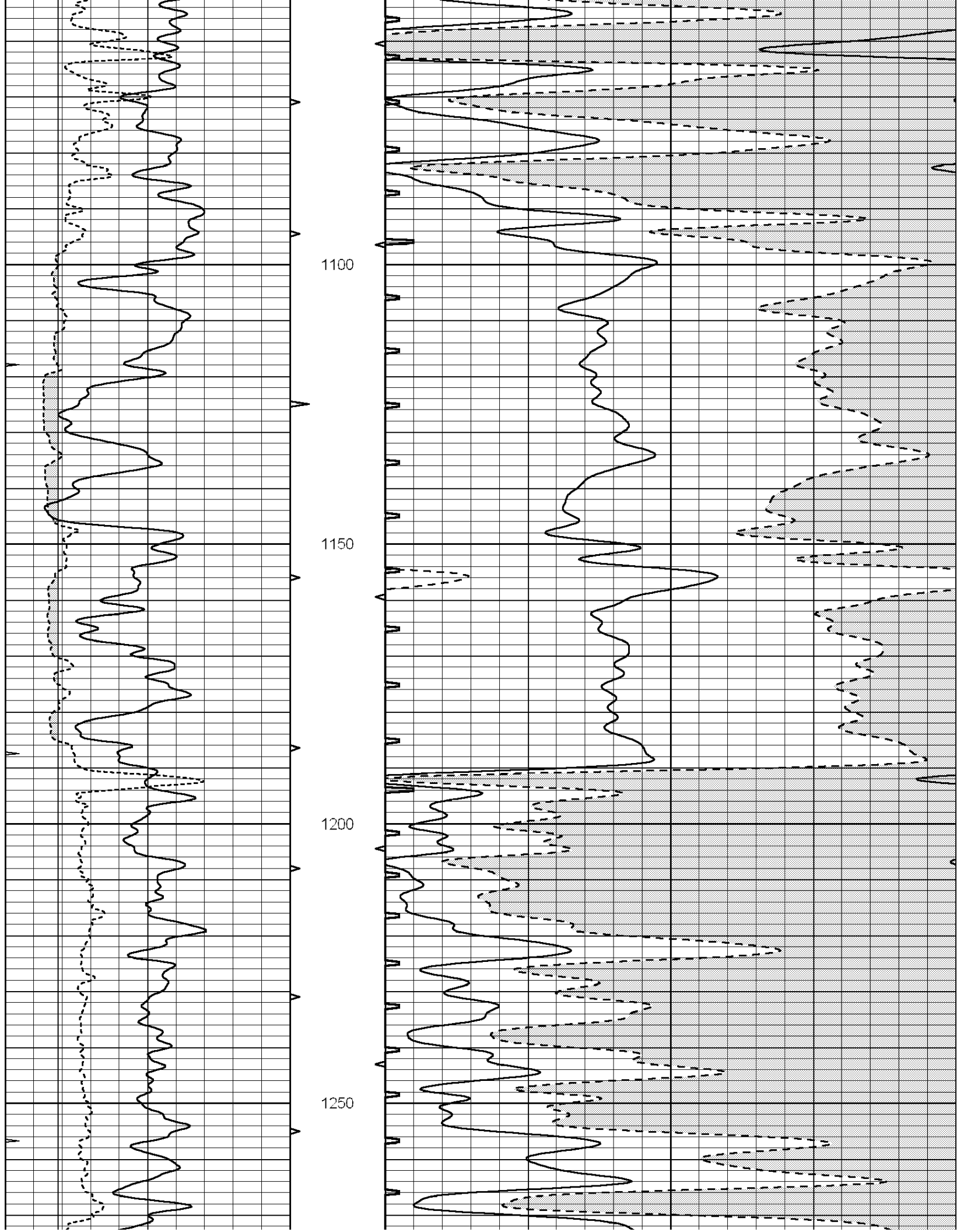
900

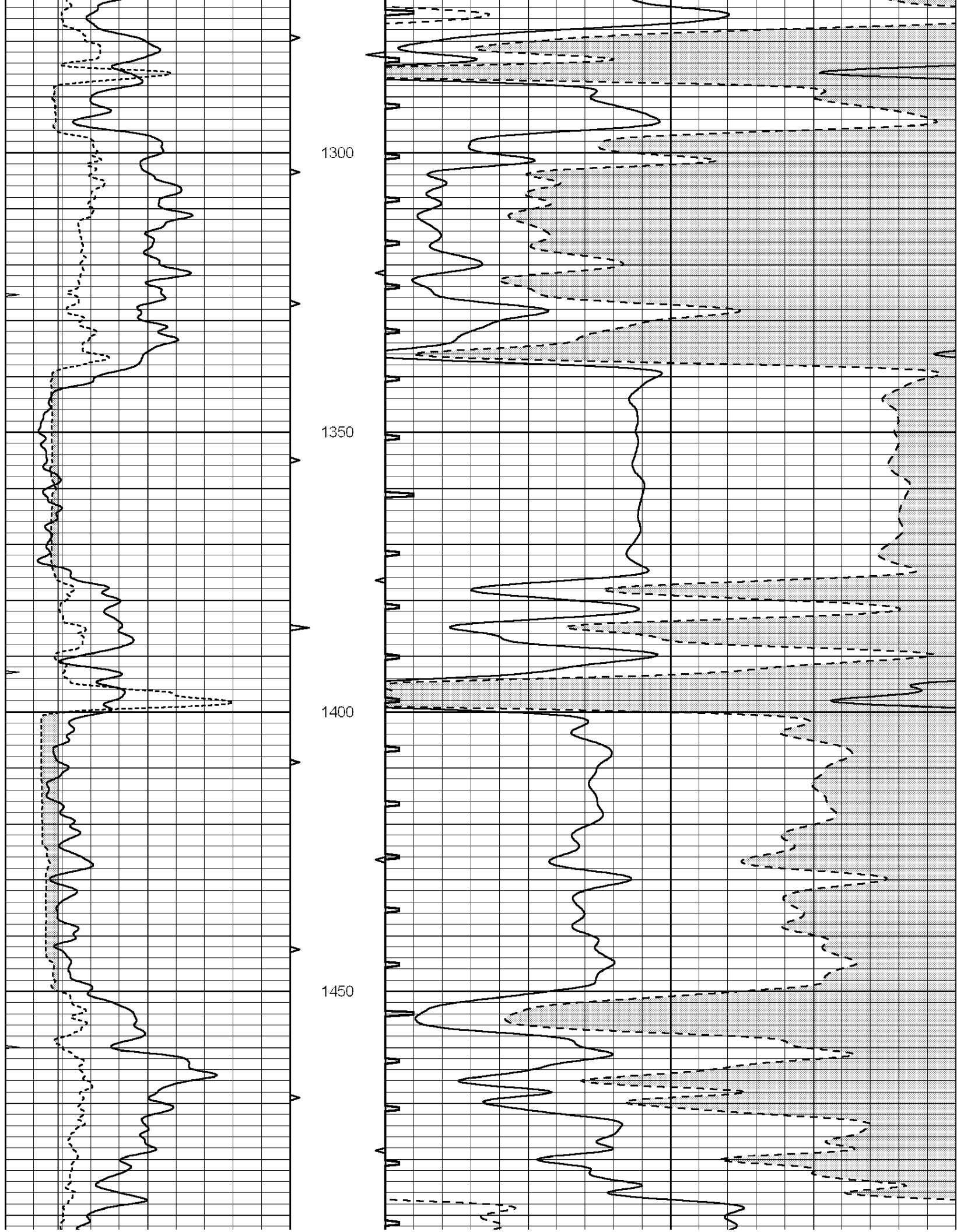
950

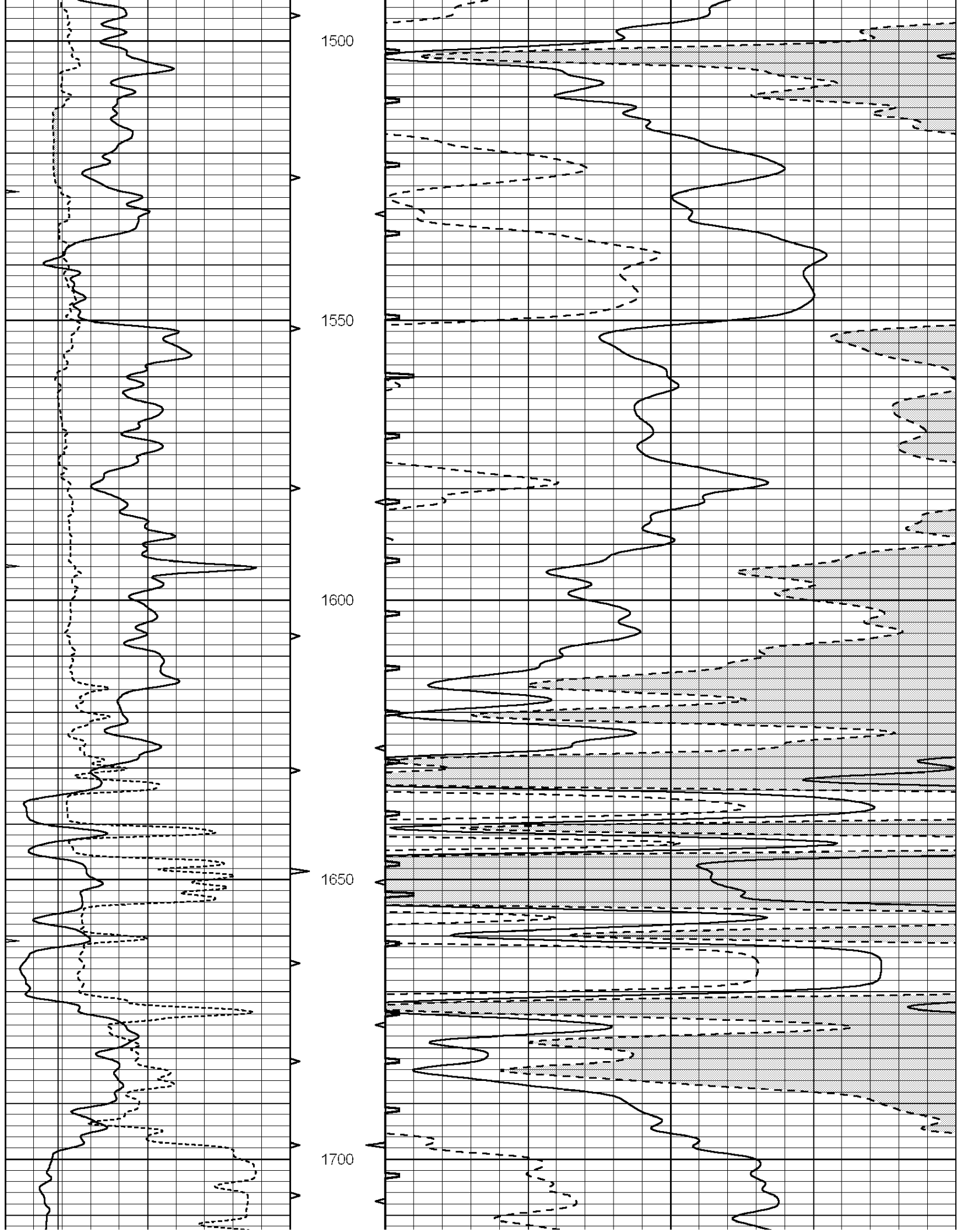
1000

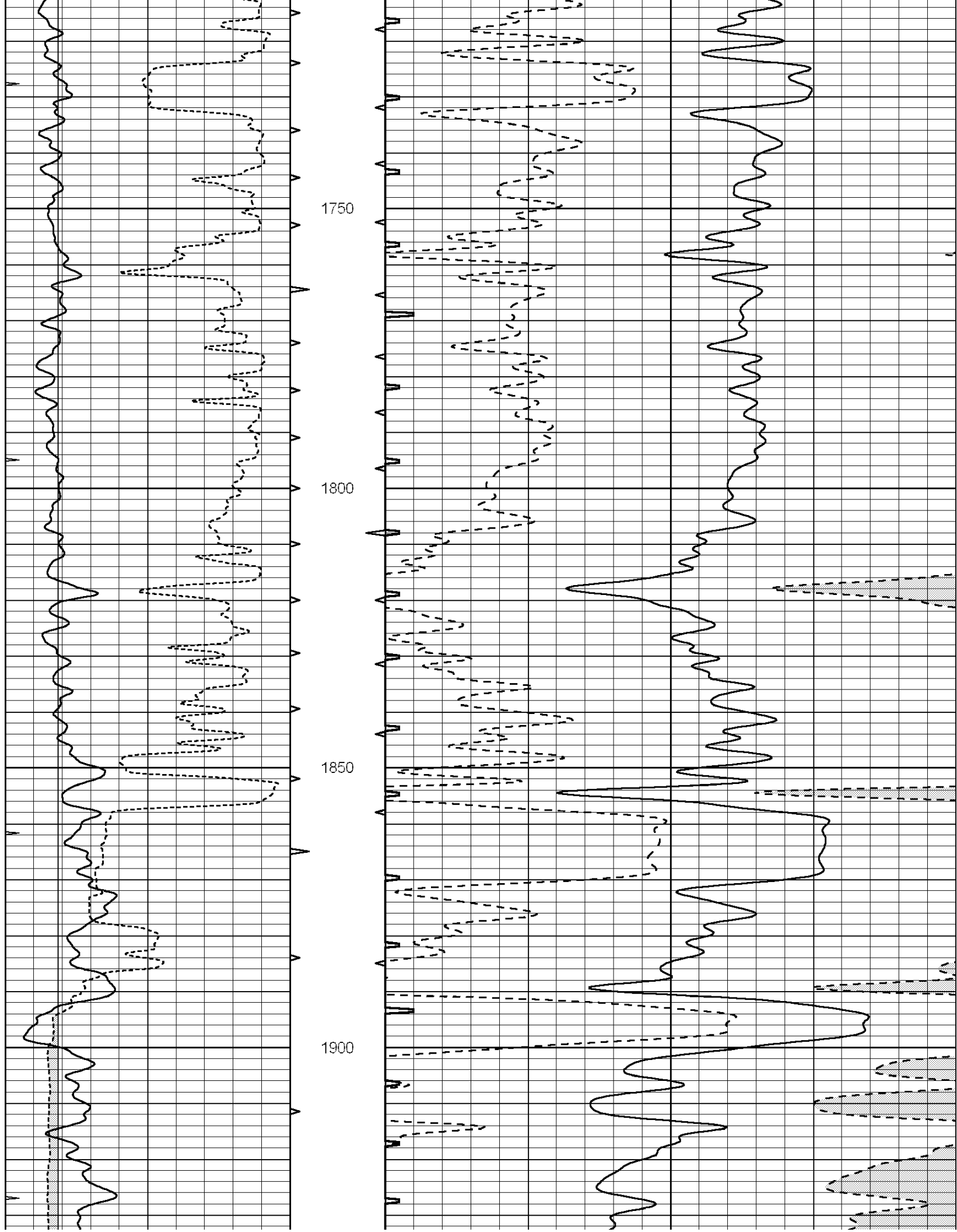
1050

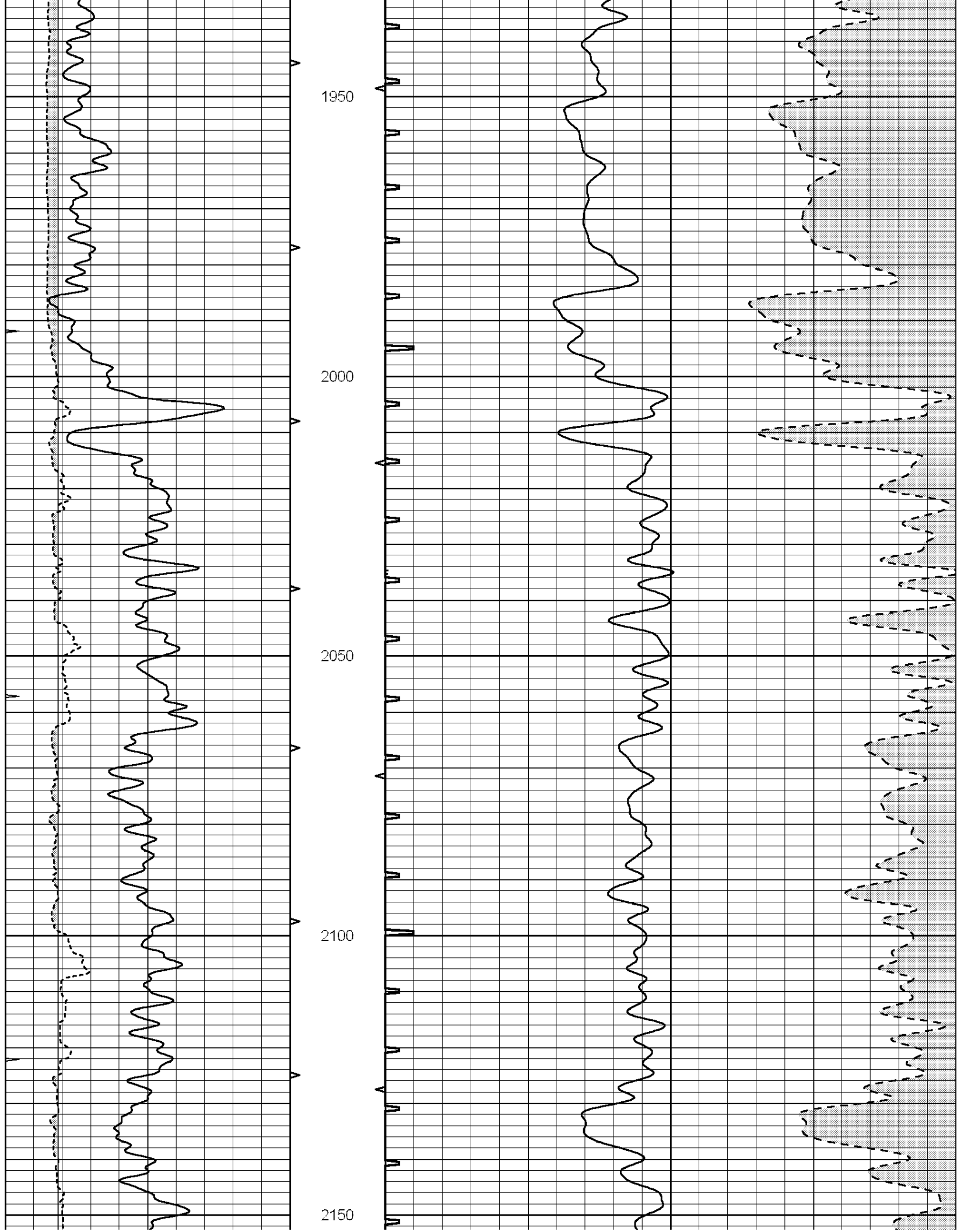


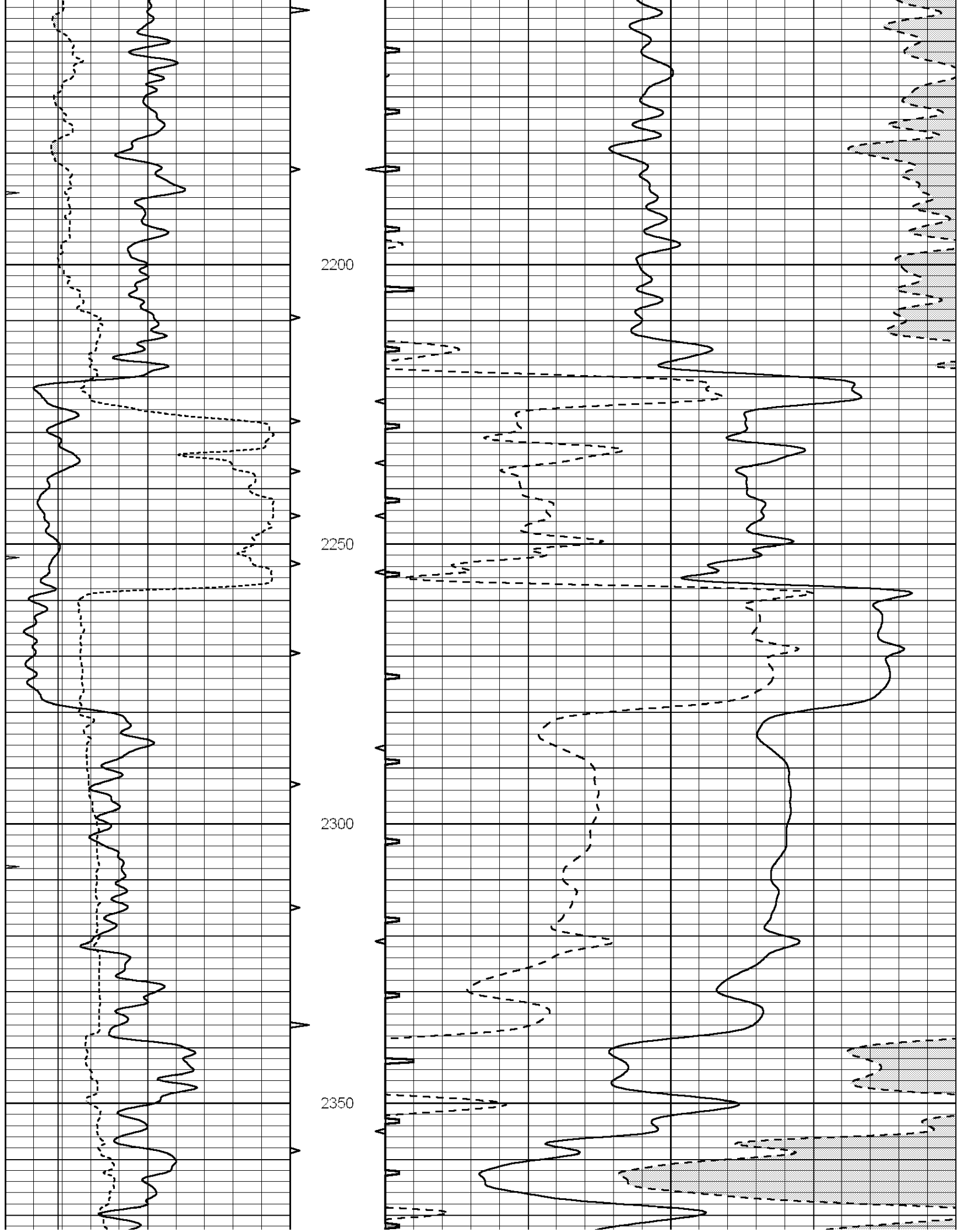


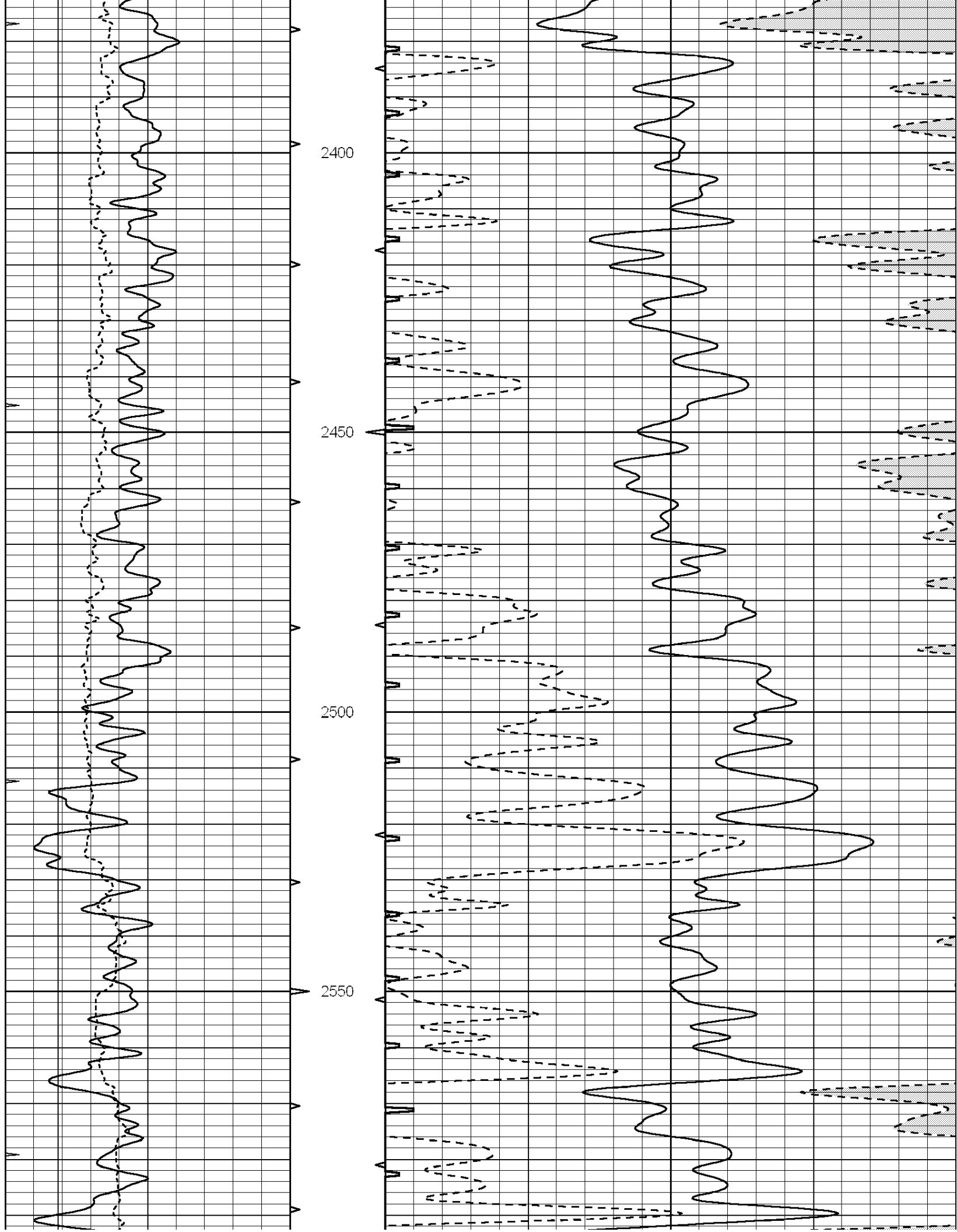


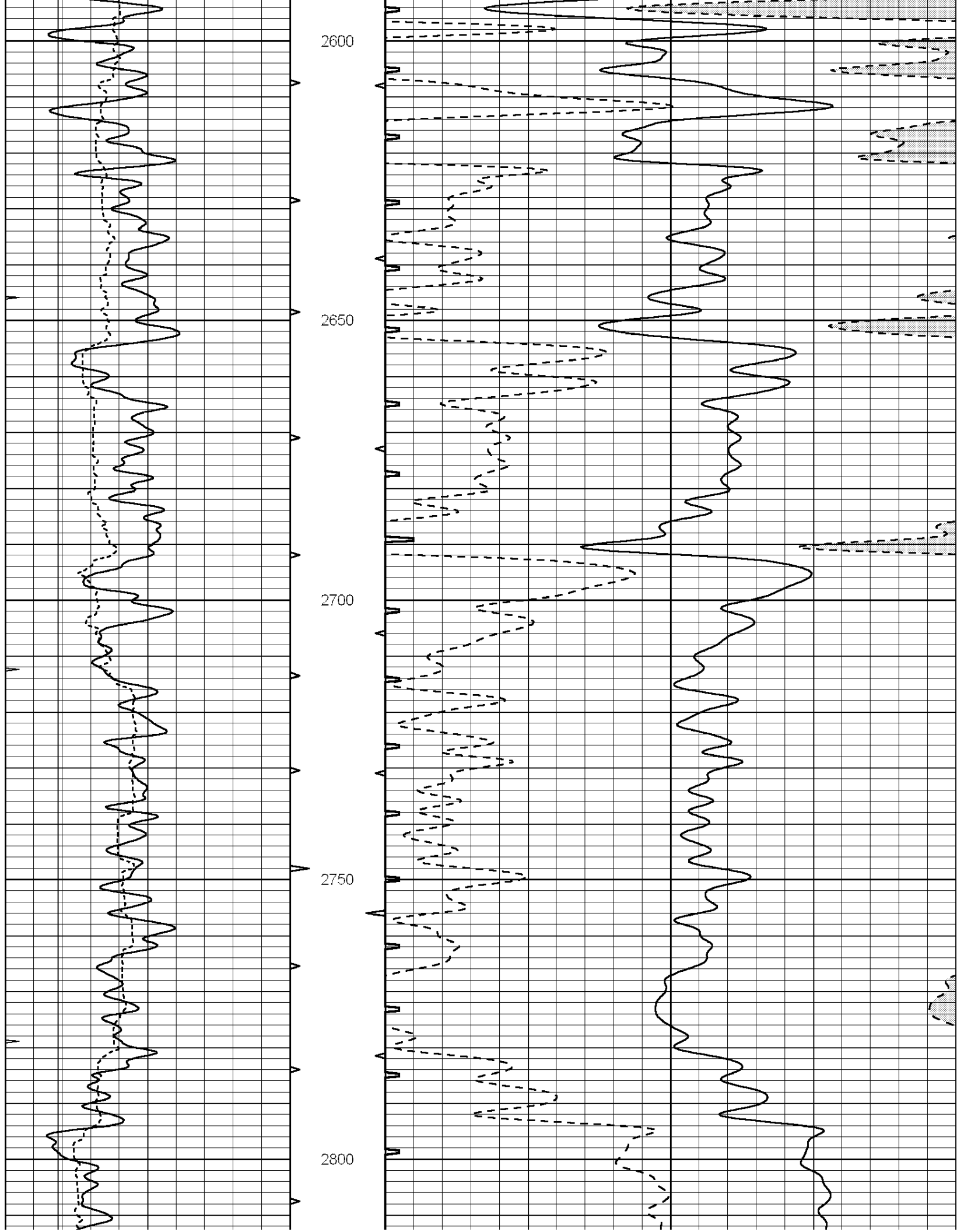


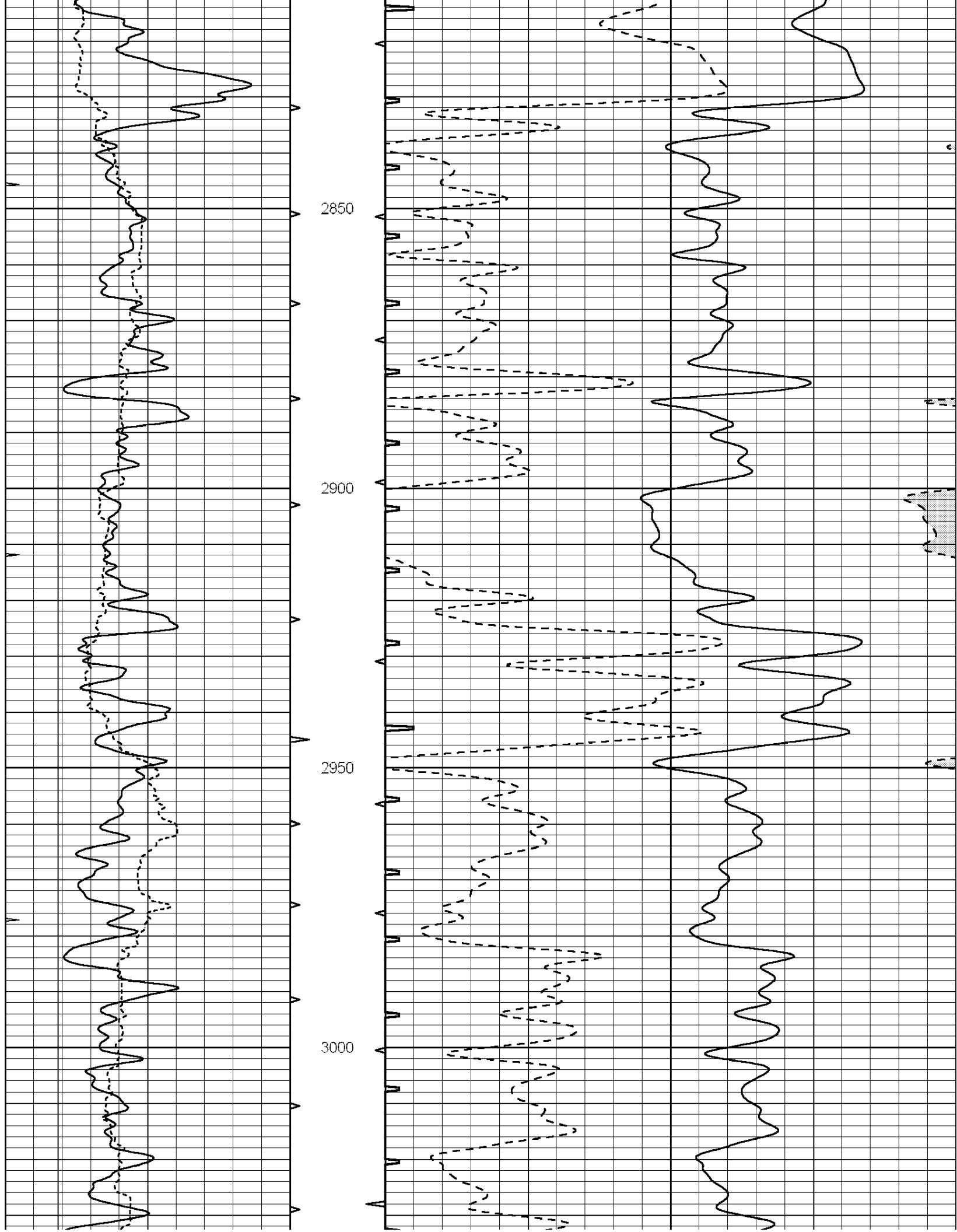


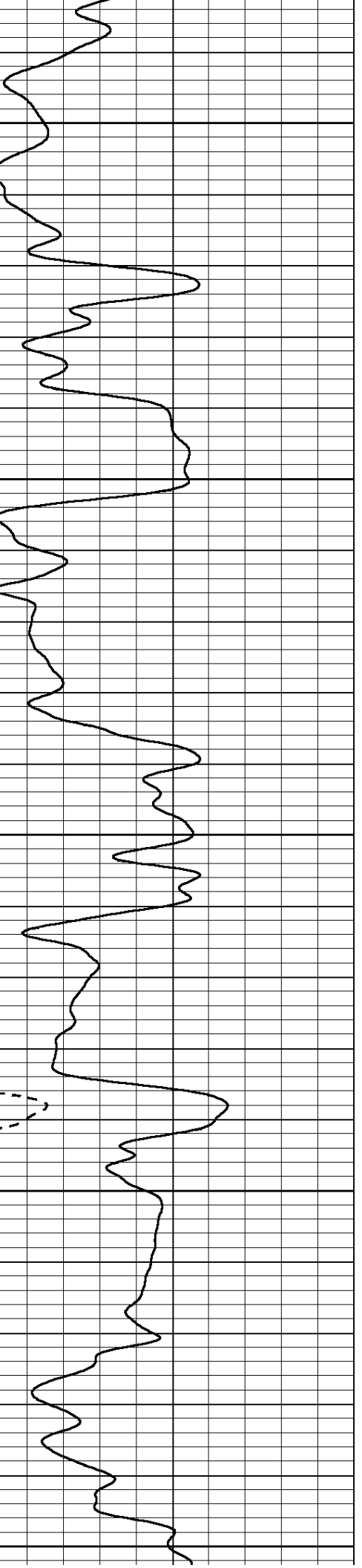
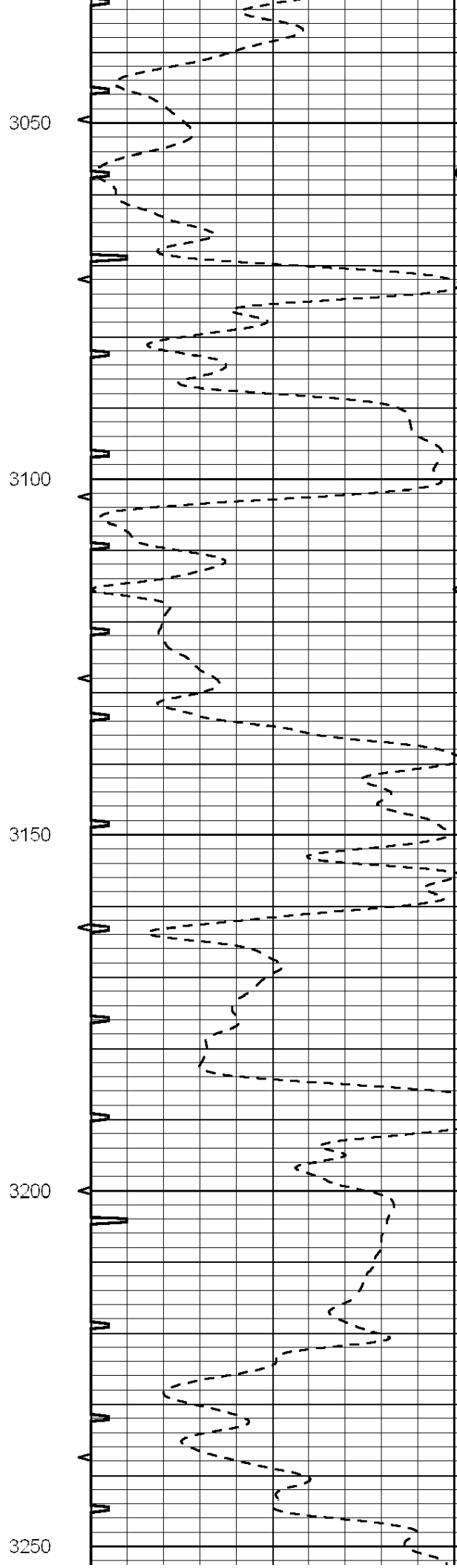
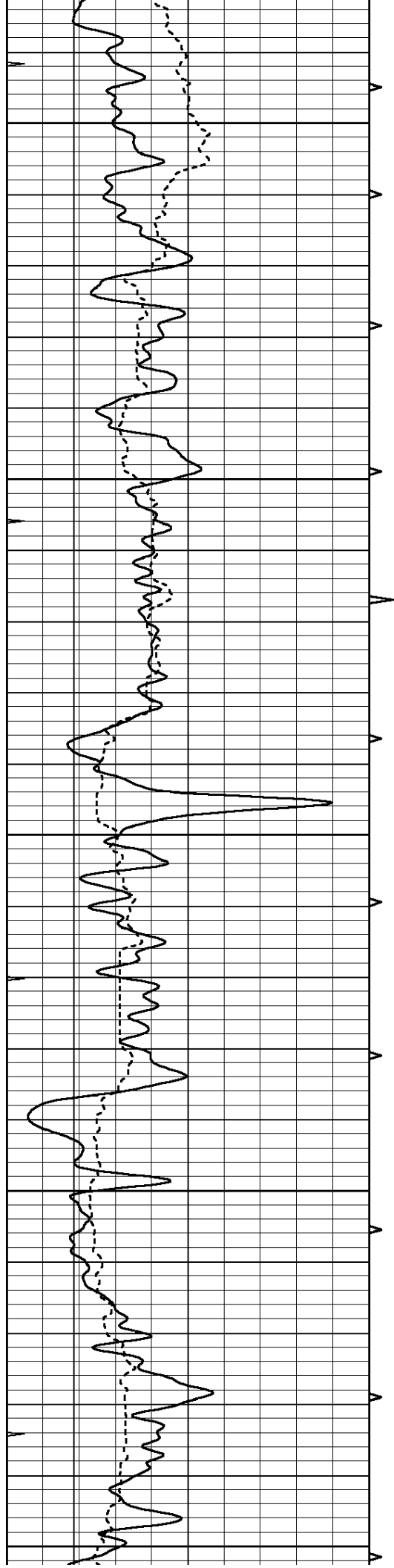


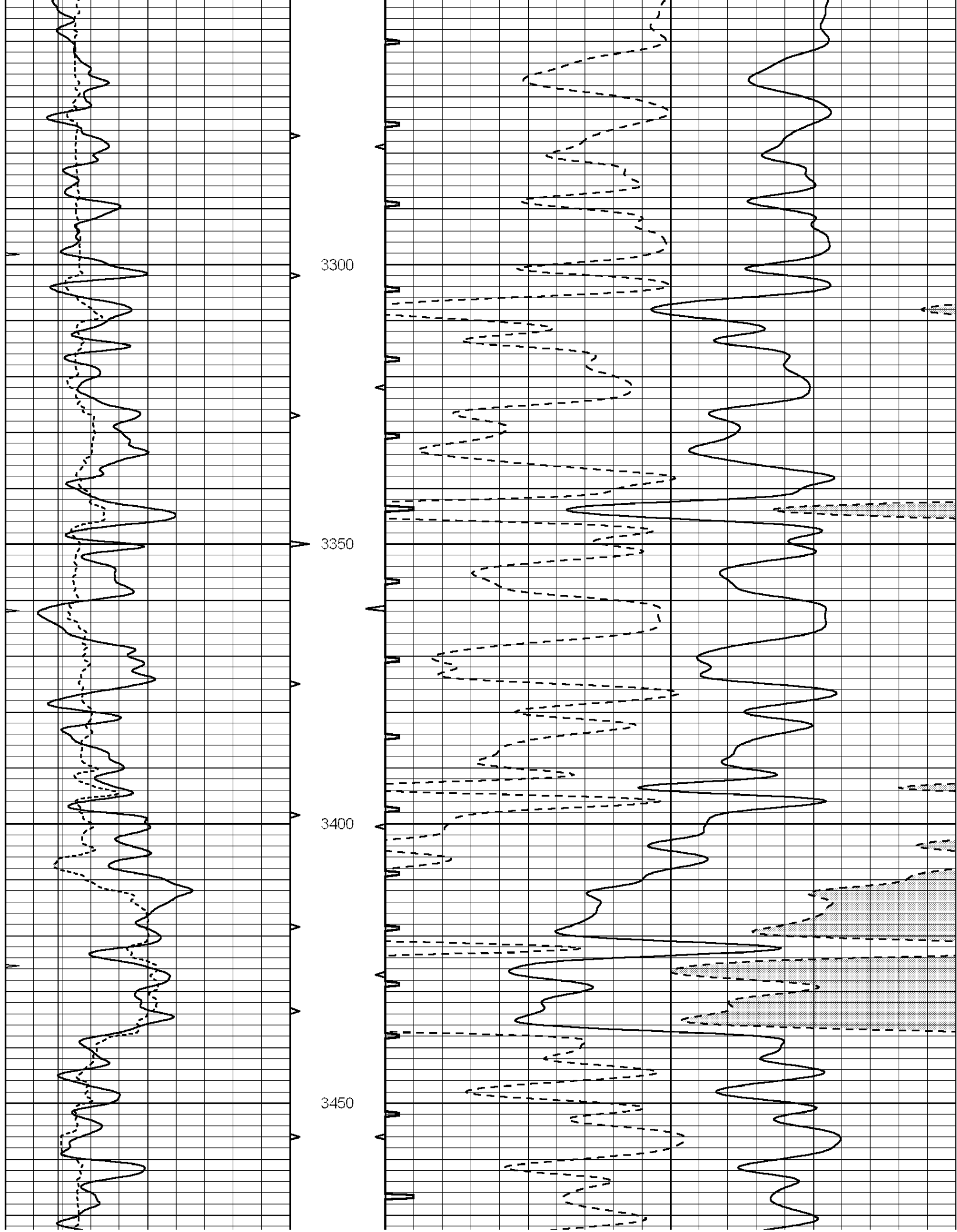


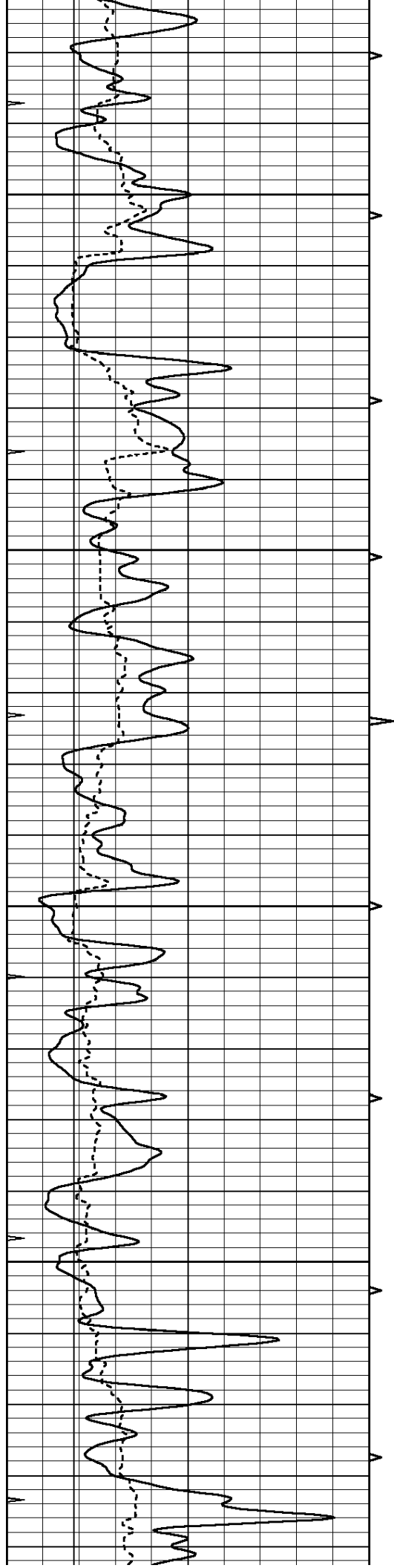










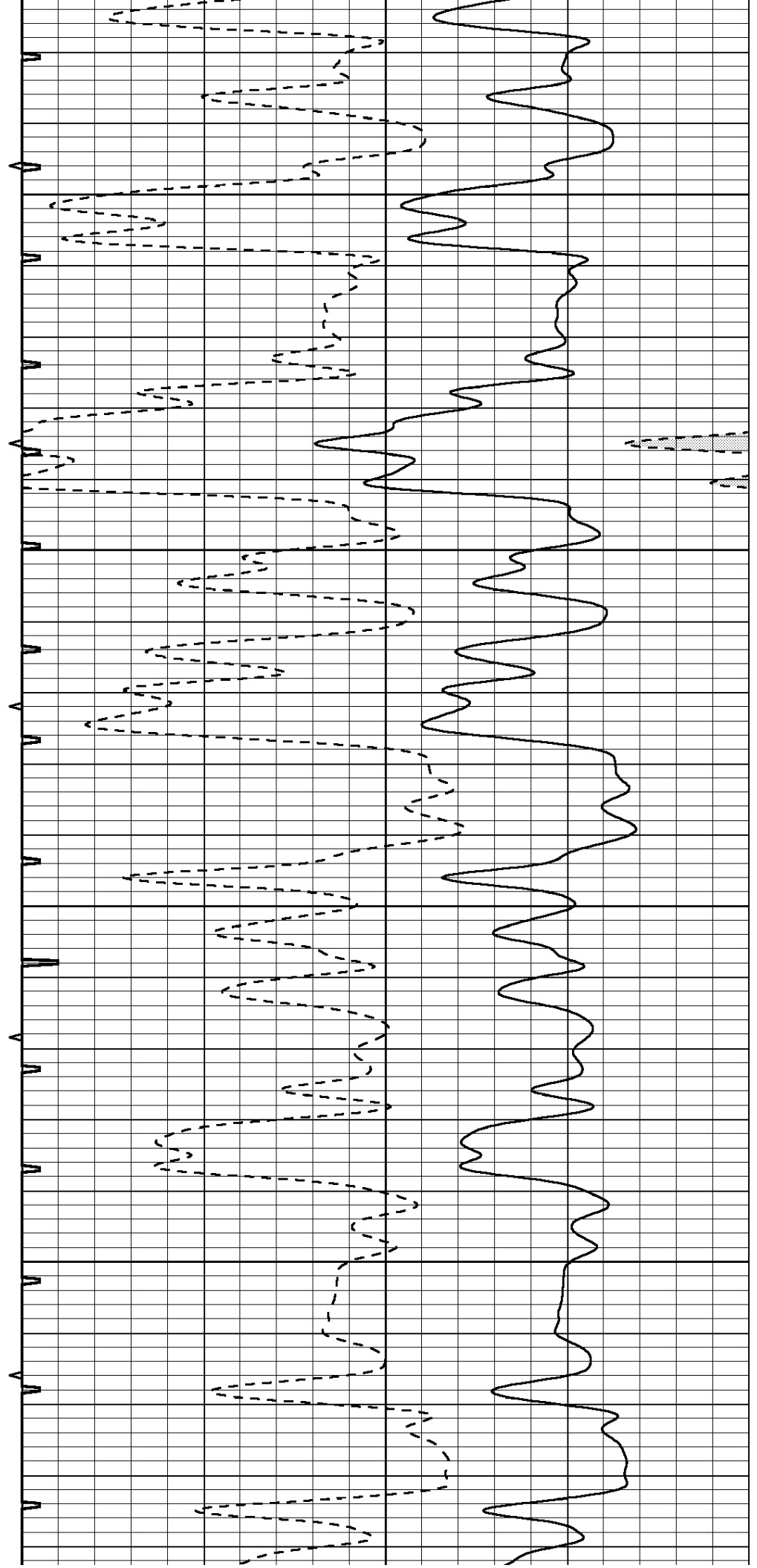


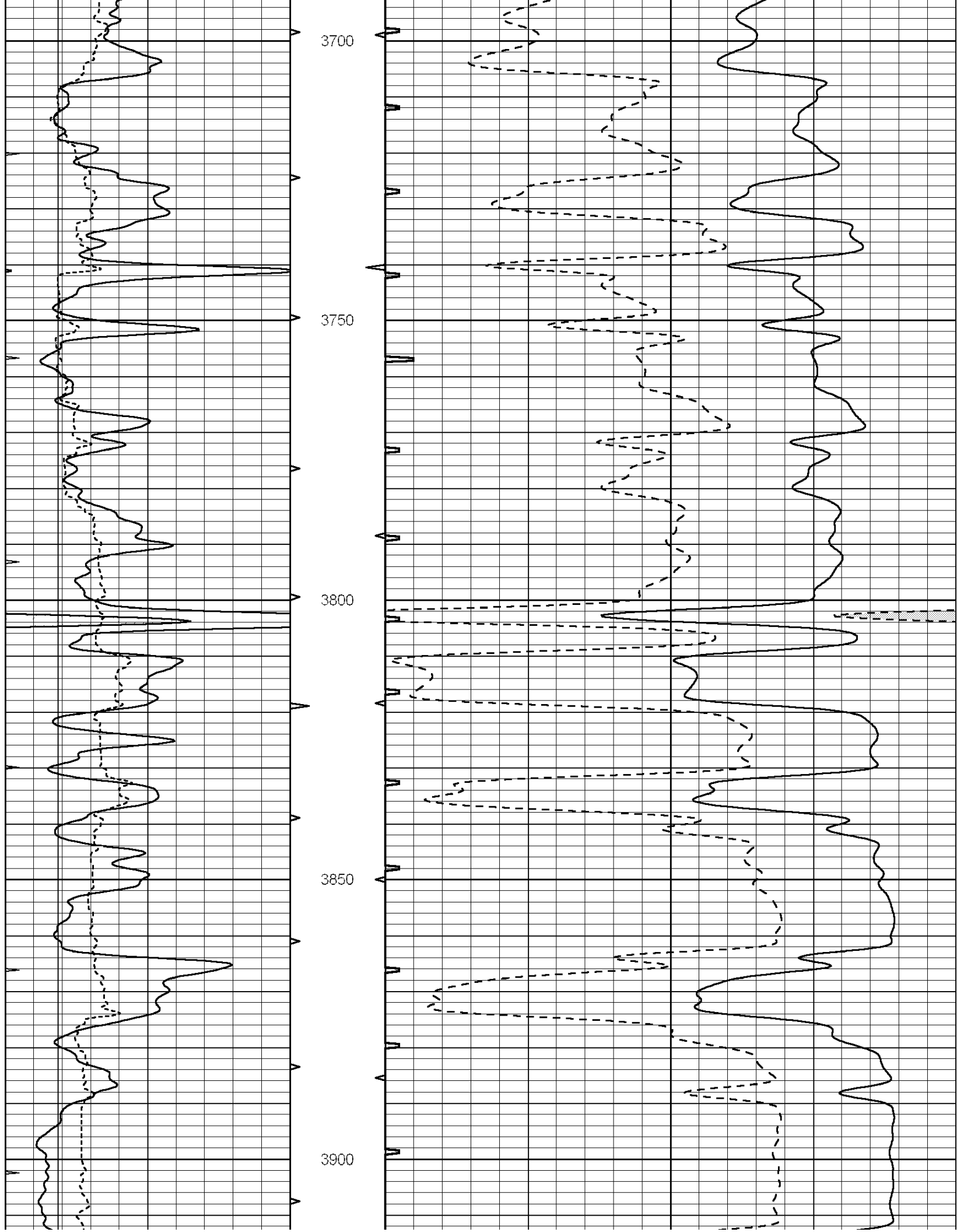
3500

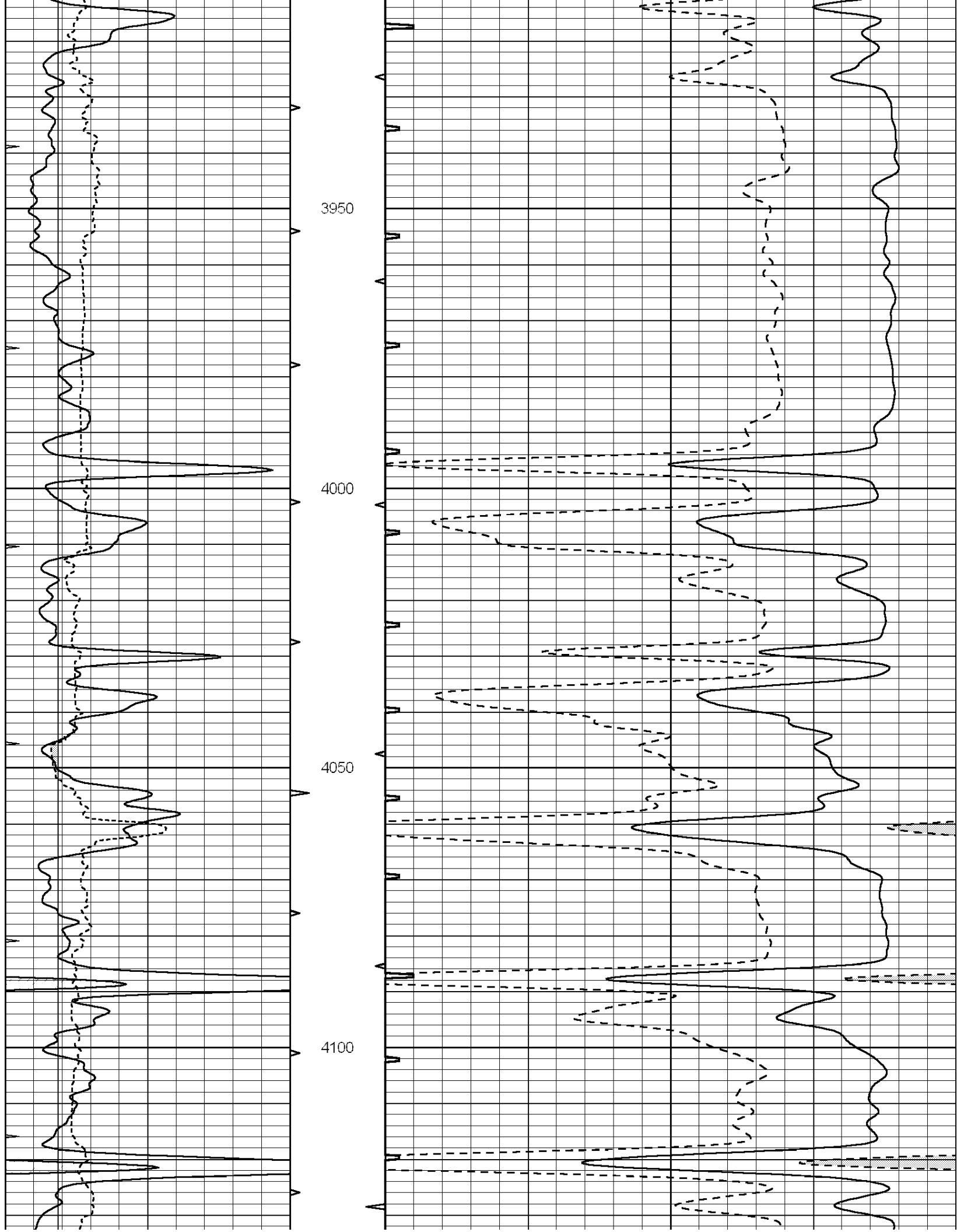
3550

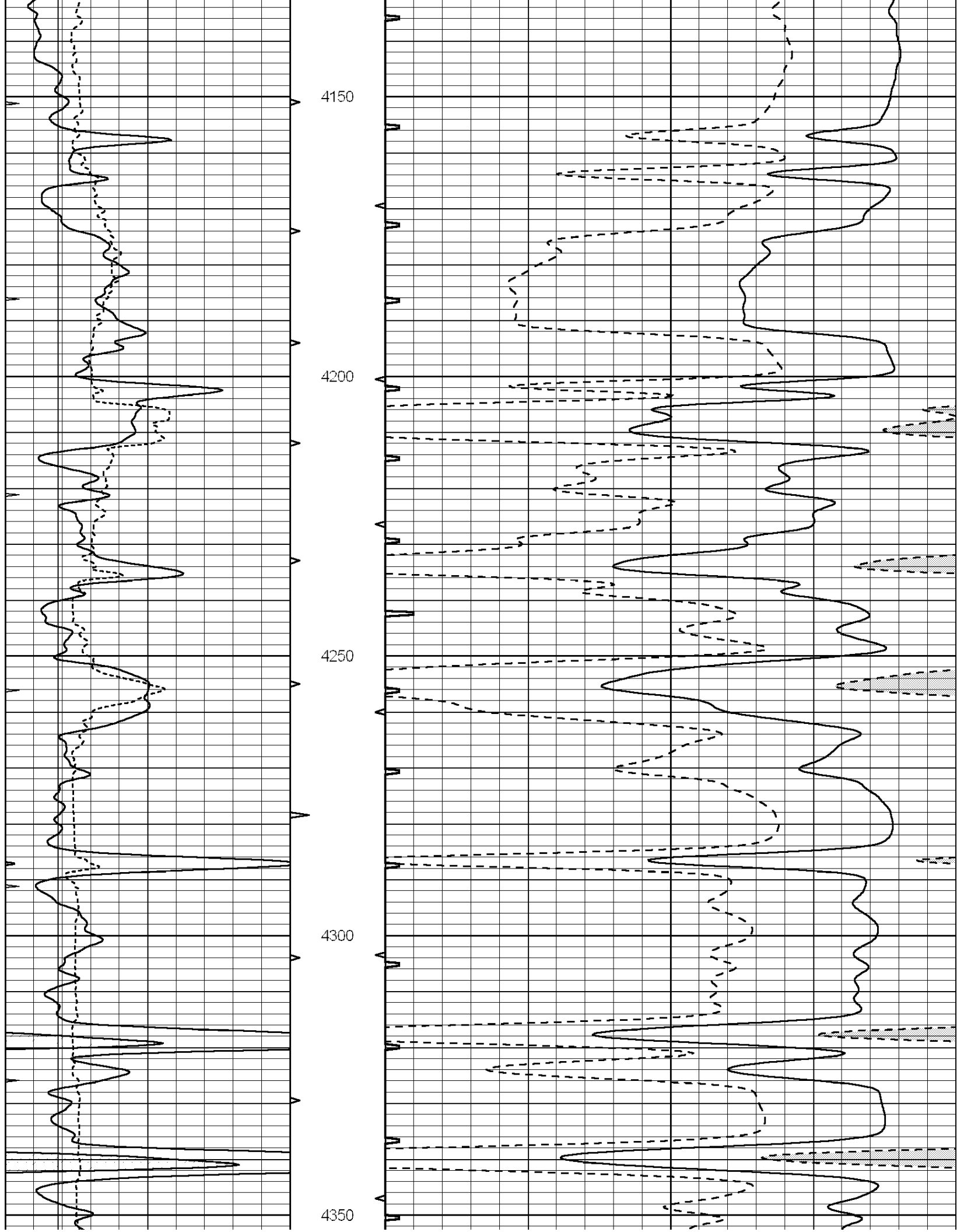
3600

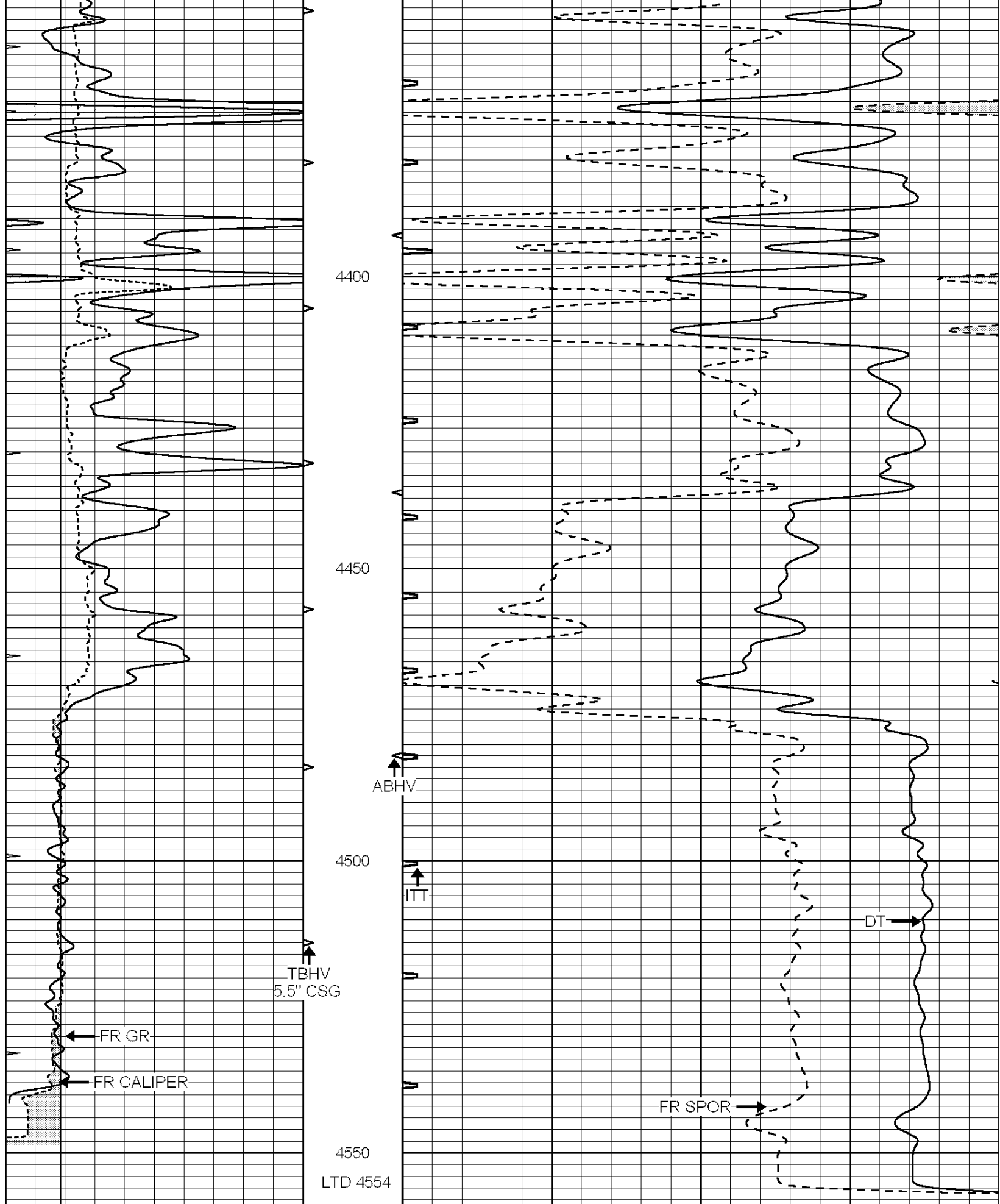
3650











0	GAMMA RAY (GAPI)	150	ABHV	140	DELTA TIME (usec/ft)	40
6	MELCAL (in)	16	10 (ft3)	0 30	SONIC POROSITY (pu)	-10

MINMK 20

TBHV 0

ITT (msec) 20

0 (ft3) 10

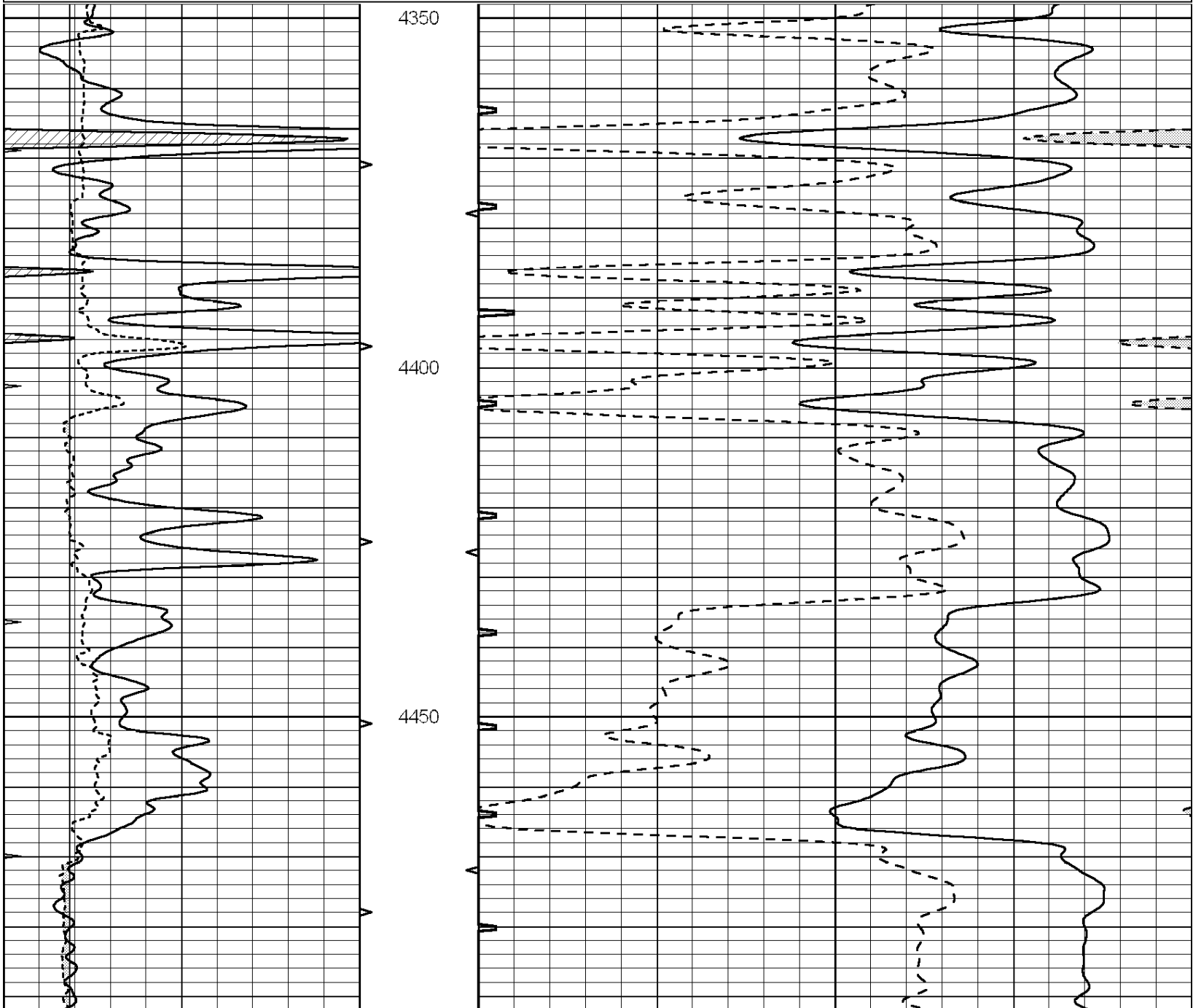


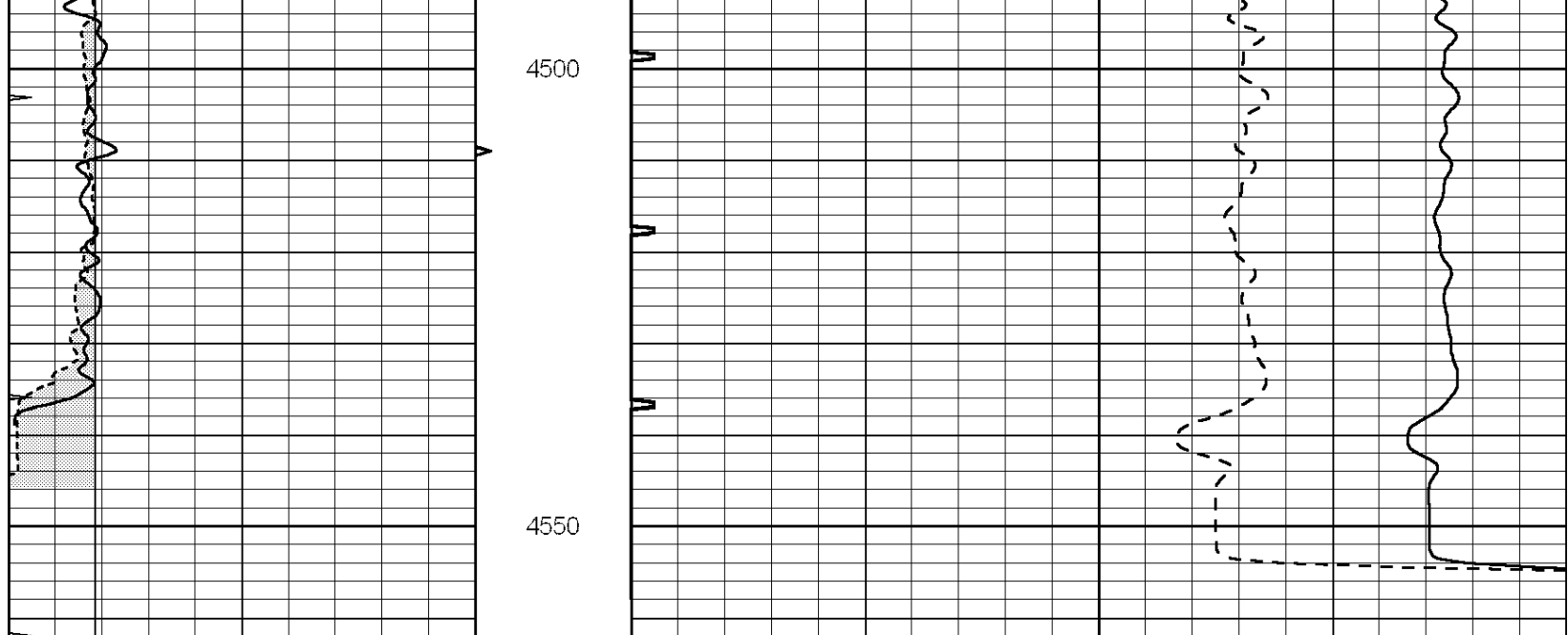
COMPLETION & PRODUCTION SERVICES CO.

# REPEAT SECTION

Database File: 012046ddn.db  
 Dataset Pathname: pass6.4  
 Presentation Format: \_slt  
 Dataset Creation: Fri Nov 29 08:44:38 2013 by Calc Open-Cased 090629  
 Charted by: Depth in Feet scaled 1:240

0	GAMMA RAY (GAPI)	150	ABHV	140	DELTA TIME (usec/ft)	40
6	MELCAL (in)	16	10 (ft3) 0	30	SONIC POROSITY (pu)	-10
0	MINMK	20	TBHV	0	ITT (msec)	20
			0 (ft3) 10			





0	GAMMA RAY (GAPI)	150	ABHV	140	DELTA TIME (usec/ft)	40
6	MELCAL (in)	16	10 (ft3) 0	30	SONIC POROSITY (pu)	-10
0	MINMK	20	TBHV	0	ITT (msec)	20
			0 (ft3) 10			