



**COMPLETION
& PRODUCTION
SERVICES CO.**

**DUAL
INDUCTION
LOG**

Company PELICAN HILL OIL & GAS, INC.
Well T-NELSON #2-30
Field WILDCAT
County GOVE State KANSAS

Company PELICAN HILL OIL & GAS, INC.
Well T-NELSON #2-30
Field WILDCAT
County GOVE
State KANSAS

Location: API #: 15-063-22161.00.00
335' FNL & 2075' FEL
SE - NW - NW - NE/4
SEC 30 TWP 14S RGE 31W
Permanent Datum GROUND LEVEL Elevation 2778
Log Measured From KELLY BUSHING 10' A.G.L.
Drilling Measured From KELLY BUSHING
Other Services
CNL/CDL/MEL
SON/FRAC
Elevation
K.B. 2788
D.F. 2786
G.L. 2778

Date	11-29-13		
Run Number	ONE		
Depth Driller	4544		
Depth Logger	4554		
Bottom Logged Interval	4552		
Top Log Interval	00		
Casing Driller	8 5/8 @ 256'		
Casing Logger	258'		
Bit Size	7.875		
Type Fluid in Hole	CHEMICAL MUD	CHLORIDES 3.000	
Density / Viscosity	9.3 / 55		
pH / Fluid Loss	10.5 / 6.4		
Source of Sample	FLOWLINE		
Rim @ Meas. Temp	0.95 @ 69F		
Rmf @ Meas. Temp	0.71 @ 69F		
Rmc @ Meas. Temp	1.14 @ 69F		
Source of Rmf / Rmc	MEASURED		
Rim @ BHT	0.50 @ 129F		
Time Circulation Stopped	2 HOURS		
Time Logger on Bottom			
Maximum Recorded Temperature	129F		
Equipment Number	860		
Location	HAYS, KS.		
Recorded By	IAN MABB		
Witnessed By	ROGER FISHER		

<<< Fold Here >>>

All interpretations are opinions based on inferences from electrical or other measurements and we cannot and do not guarantee the accuracy or correctness of any interpretation, and we shall not, except in the case of gross or willful negligence on our part, be liable or responsible for any loss, costs, damages, or expenses incurred or sustained by anyone resulting from any interpretation made by any of our officers, agents or employees. These interpretations are also subject to our general terms and conditions set out in our current Price Schedule.

Comments

NABORS COMPLETION & PRODUCTION SERVICES
785-628-6395
THANK YOU FOR YOUR BUSINESS
DIRECTIONS: OAKLEY, KS. - 20 MILES SOUTH TO JAYHAWK RD. - 3 MILES EAST TO GOVE 14
AFTER THE SECOND CATTLE GUARD WEST INTO

0 Gamma Ray (GAPI) 150

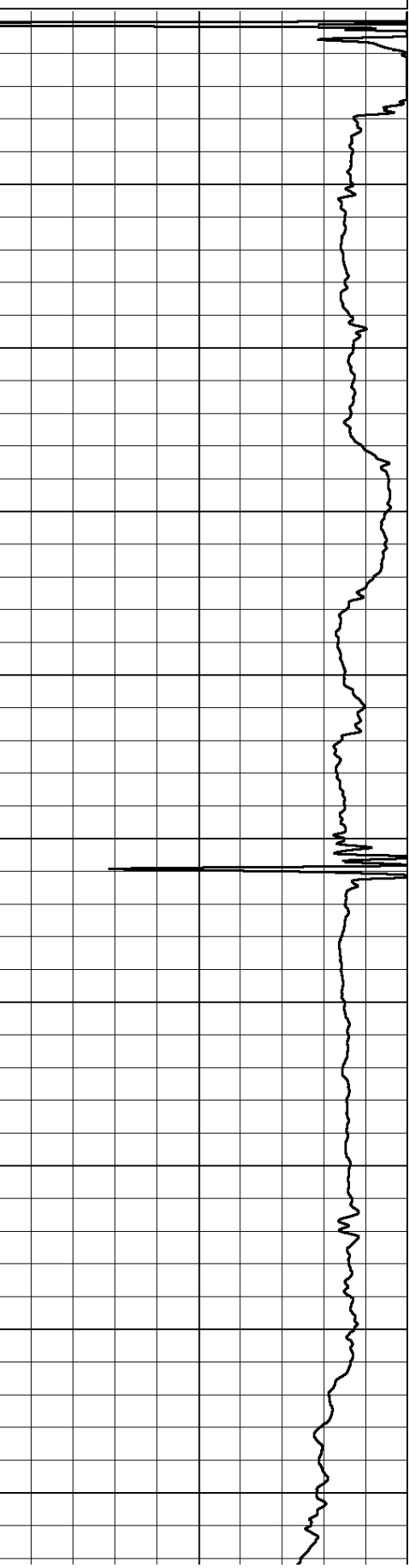
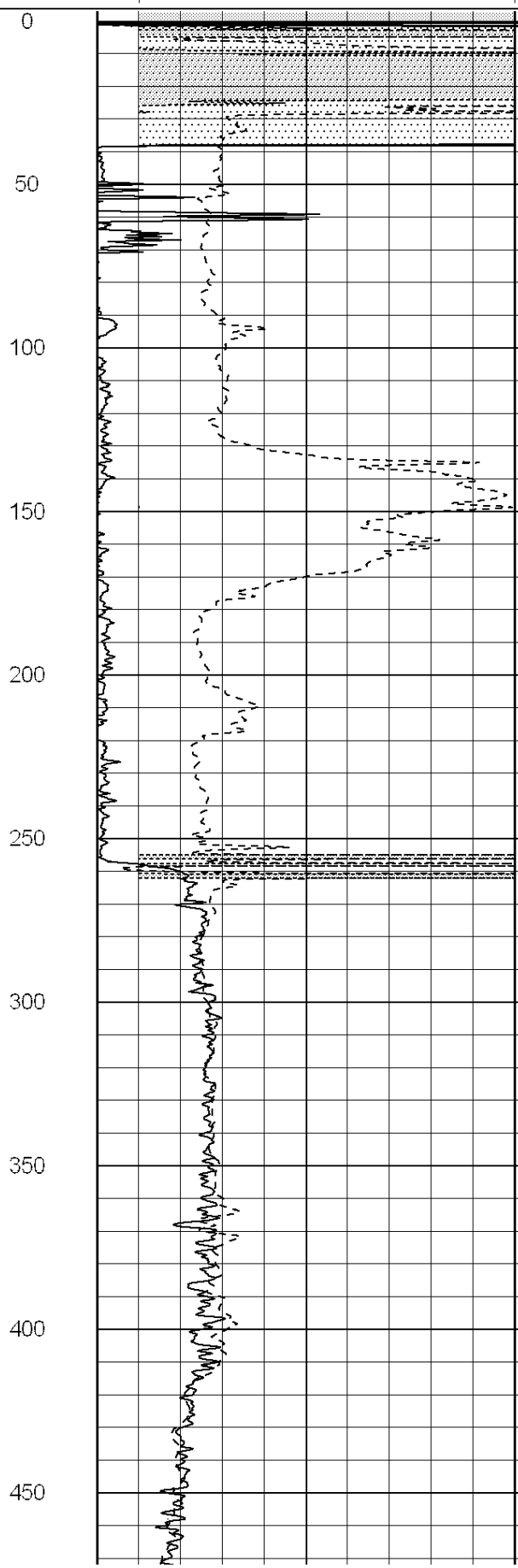
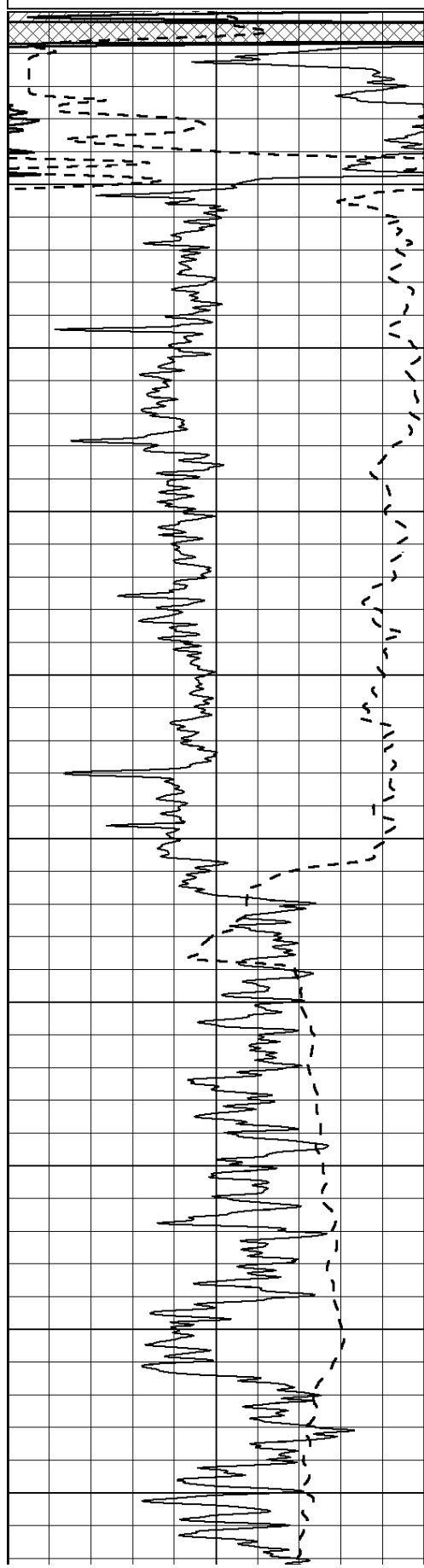
0 RLL3 (Ohm-m) 50

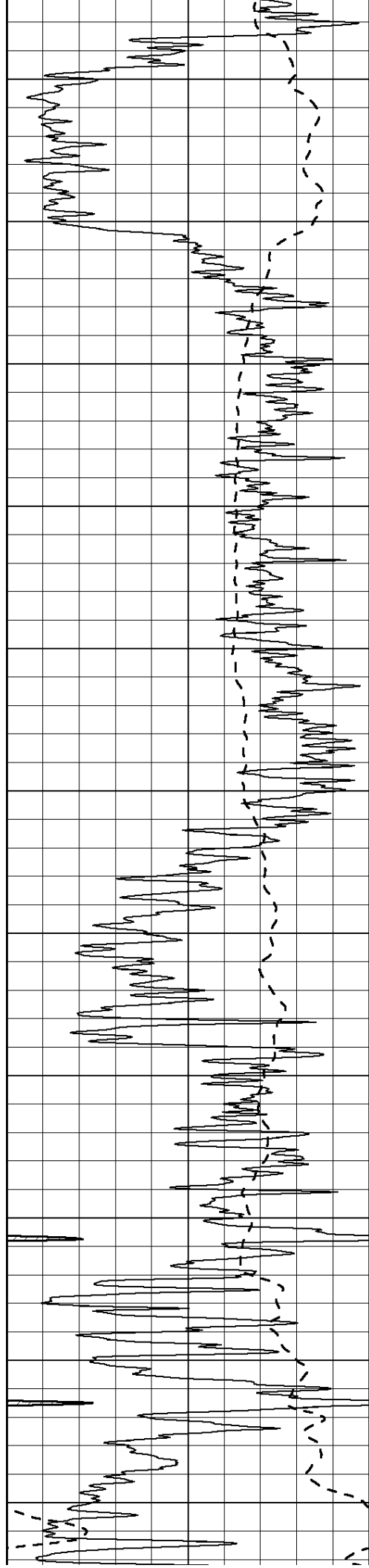
0 Deep Induction (Ohm-m) 50

1000 CILD (mmho/m) 0

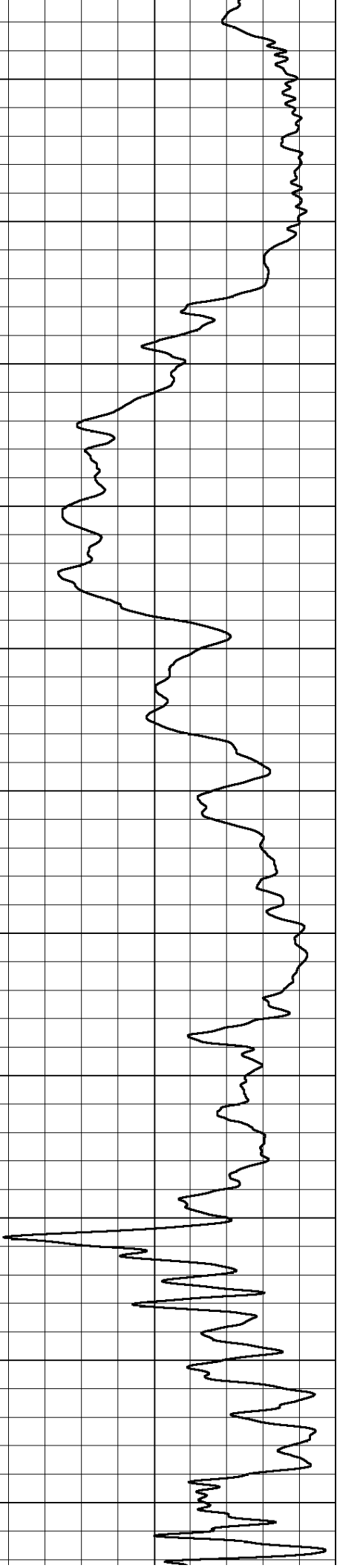
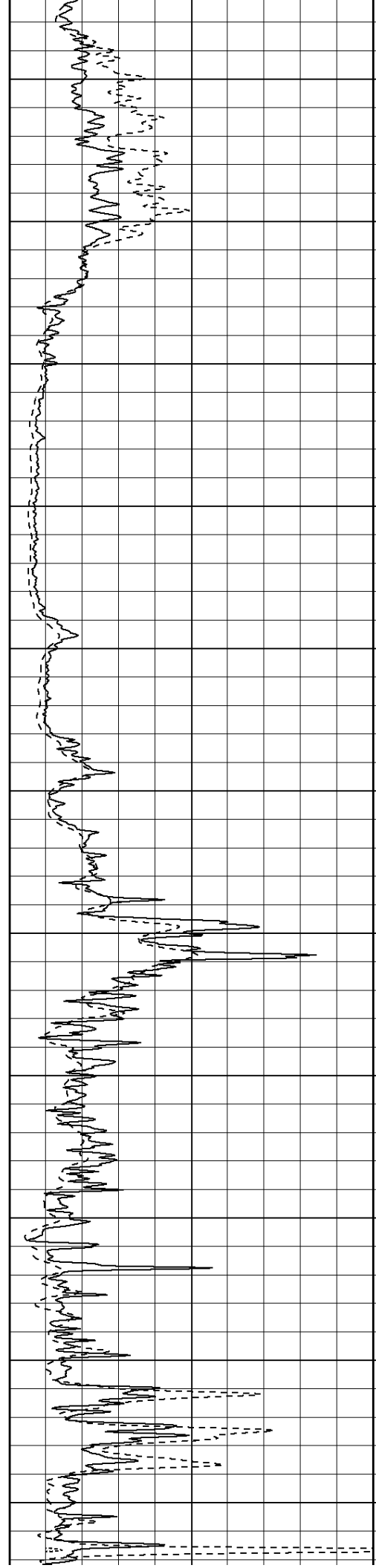
50 RILD X10 (Ohm-m) 500

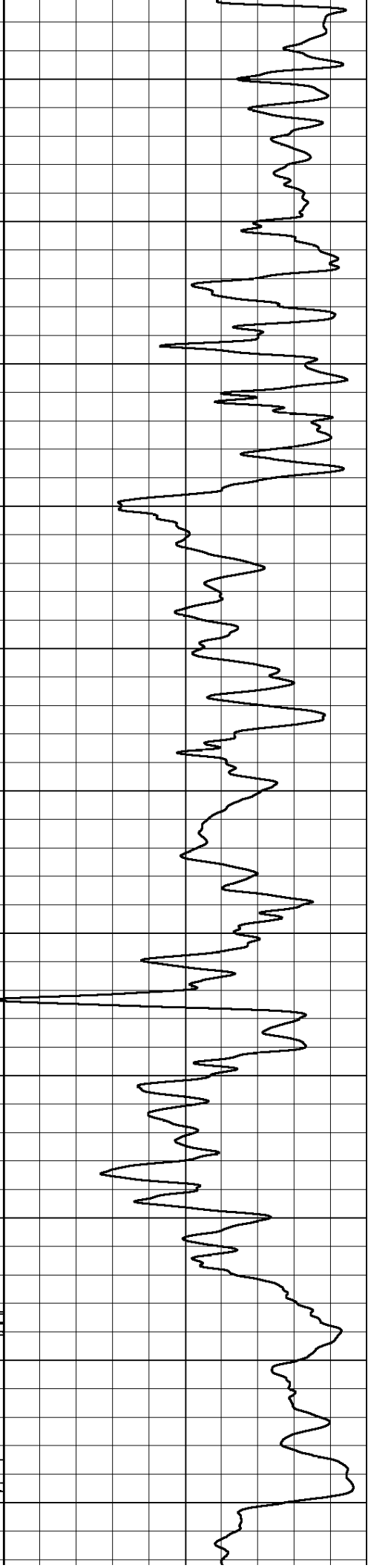
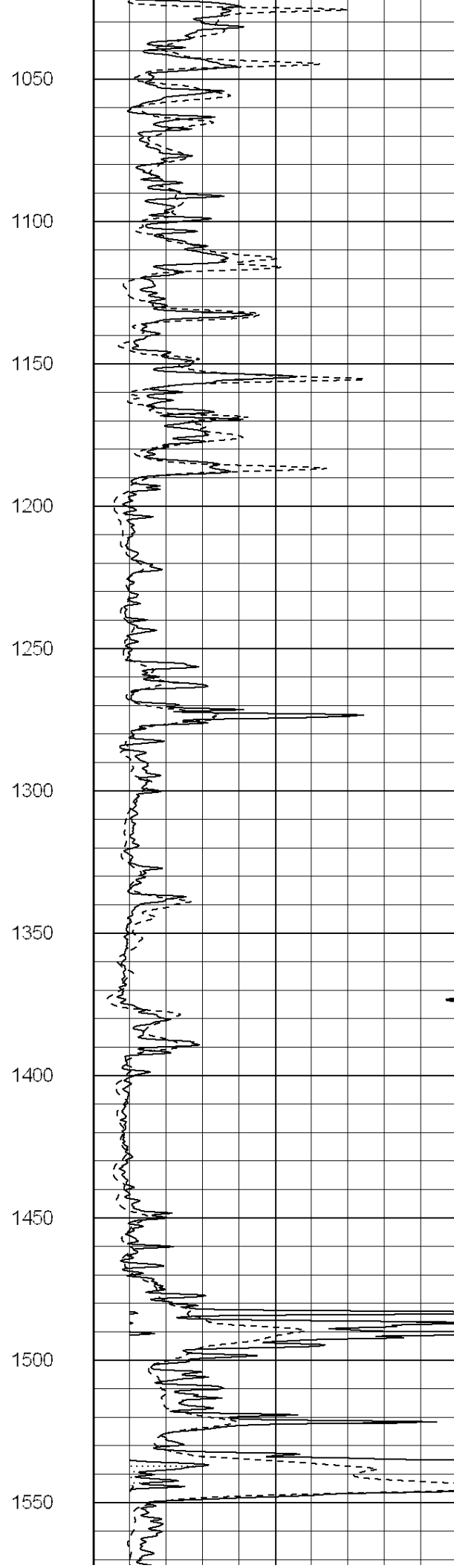
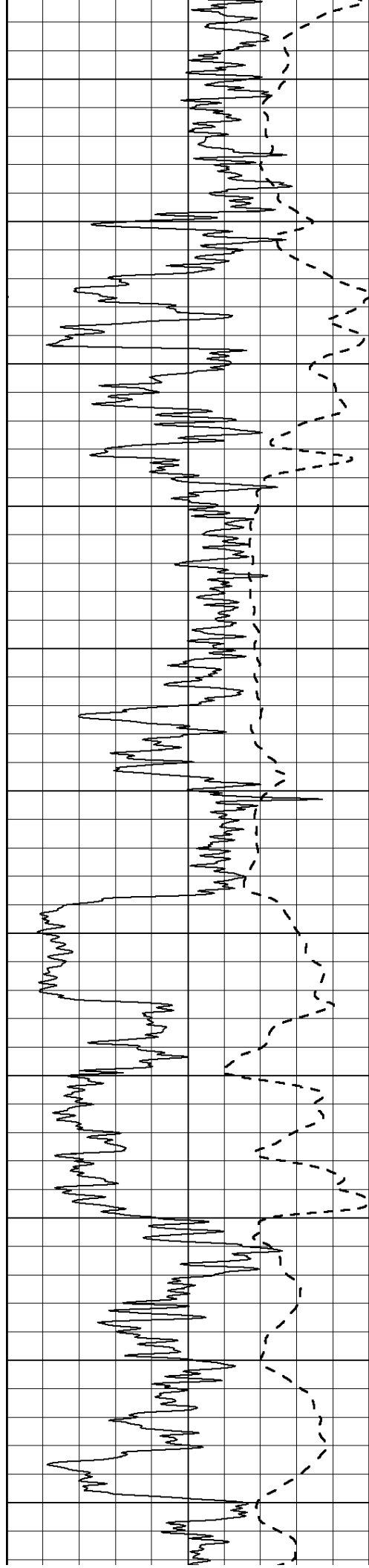
50 RLL3 X10 (Ohm-m) 500

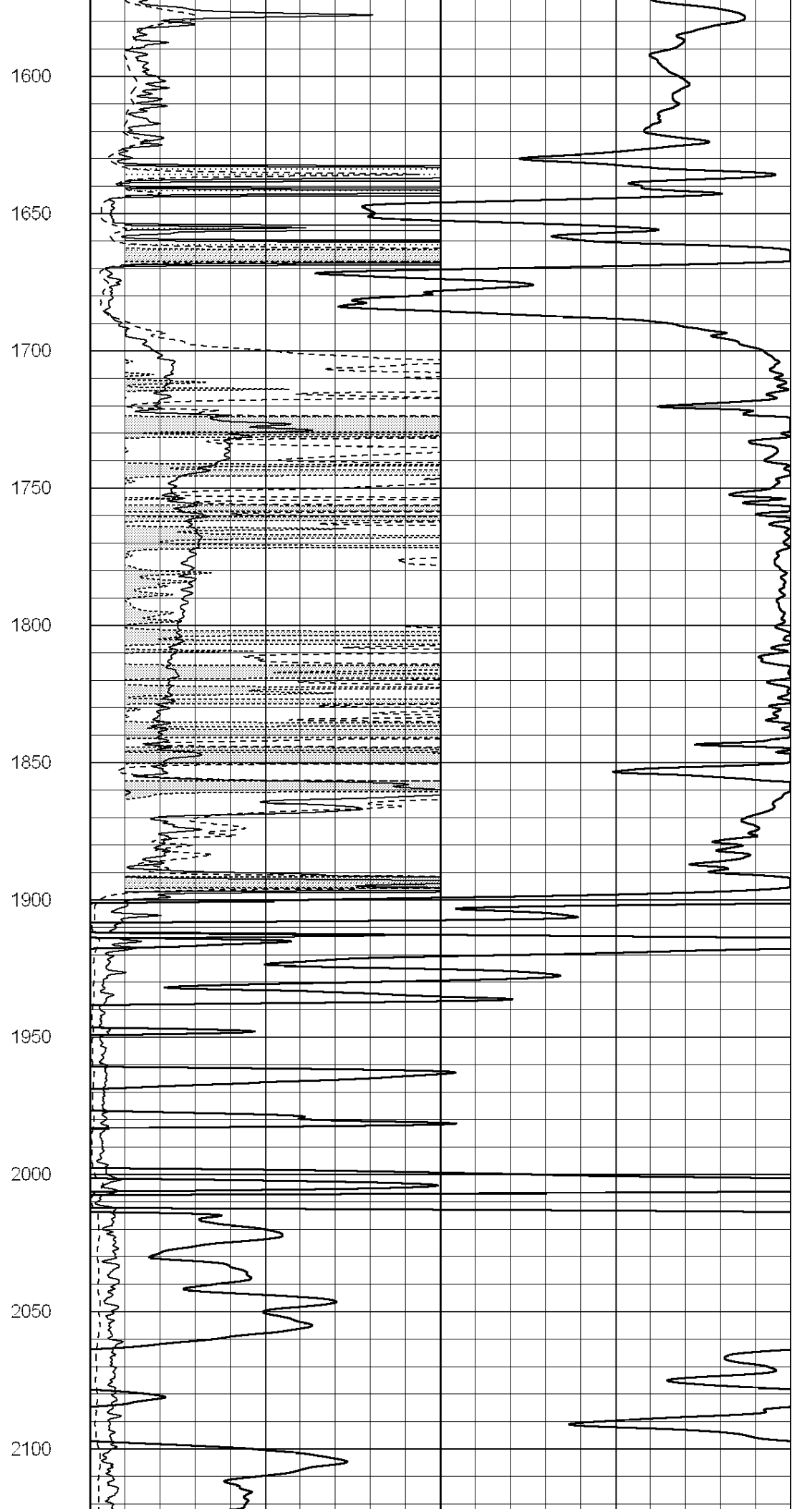
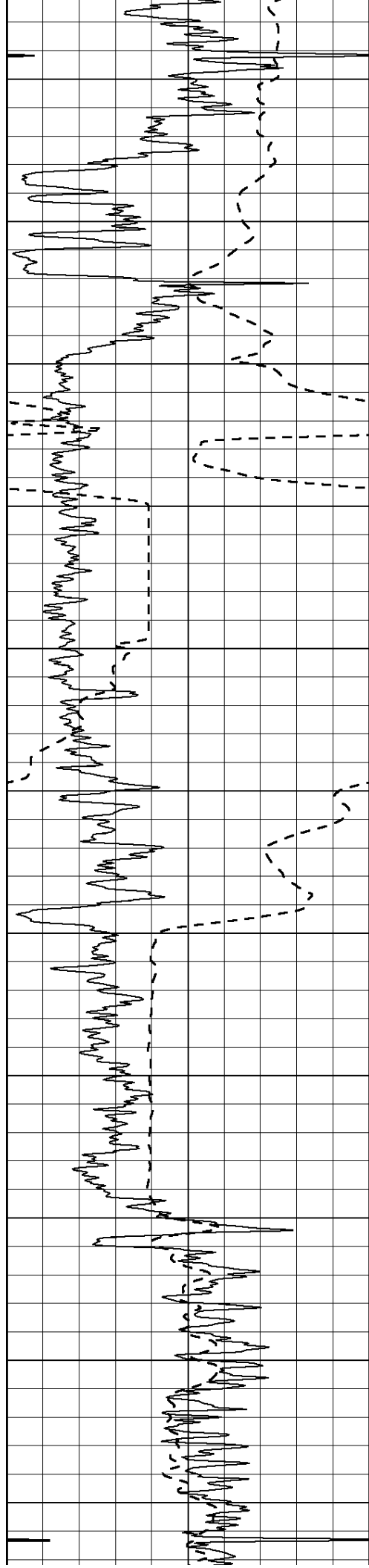


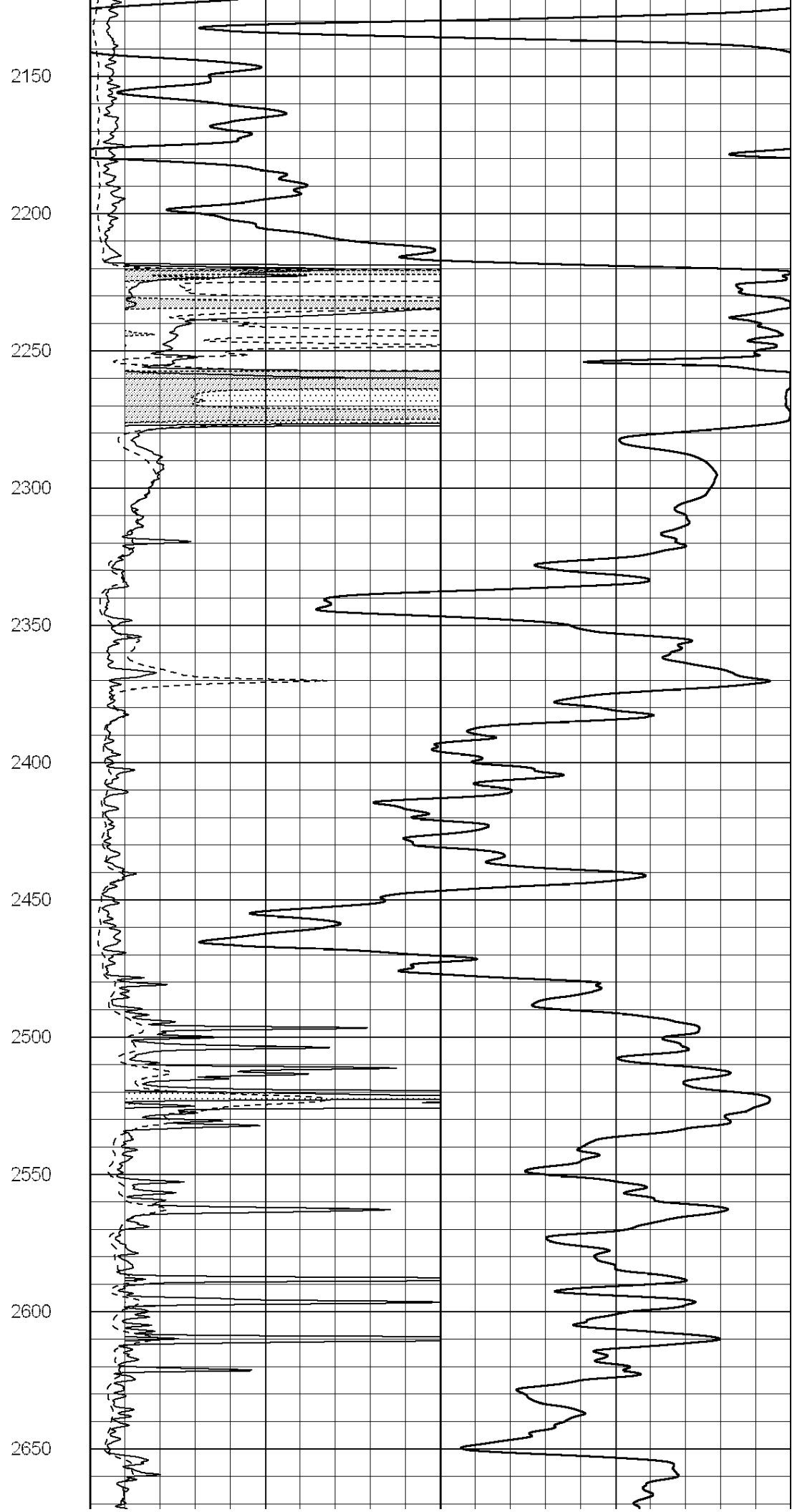
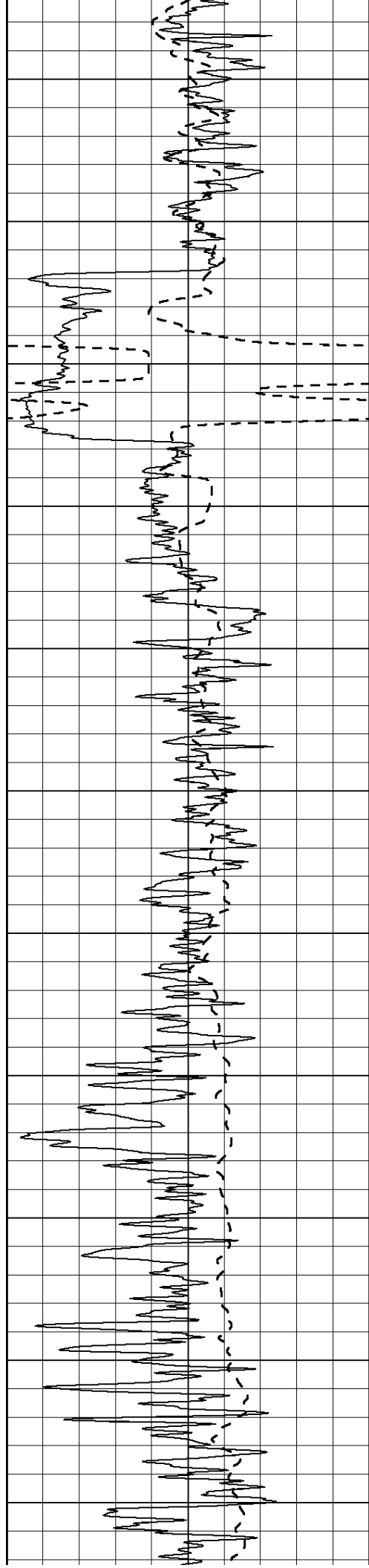


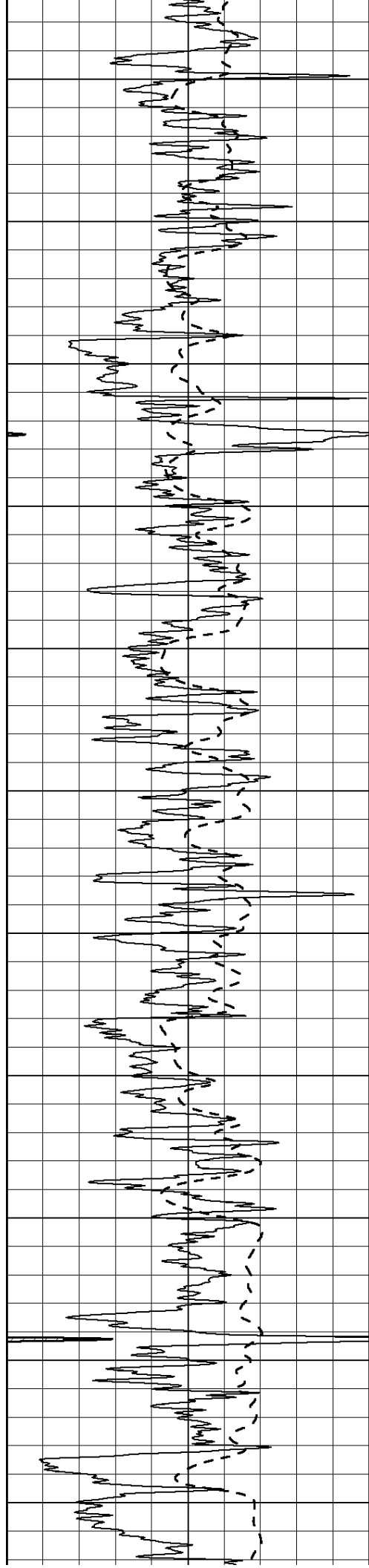
500
550
600
650
700
750
800
850
900
950
1000



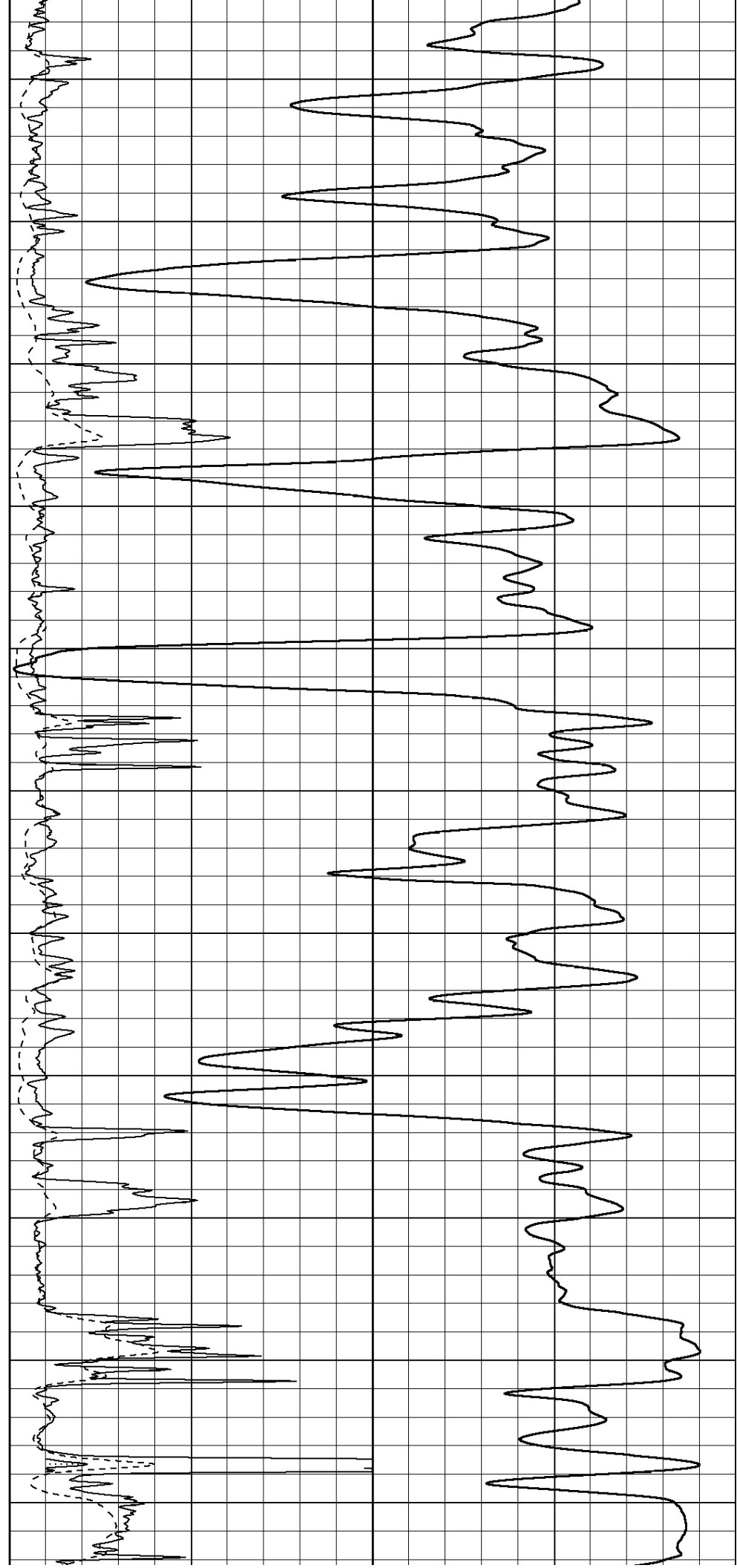


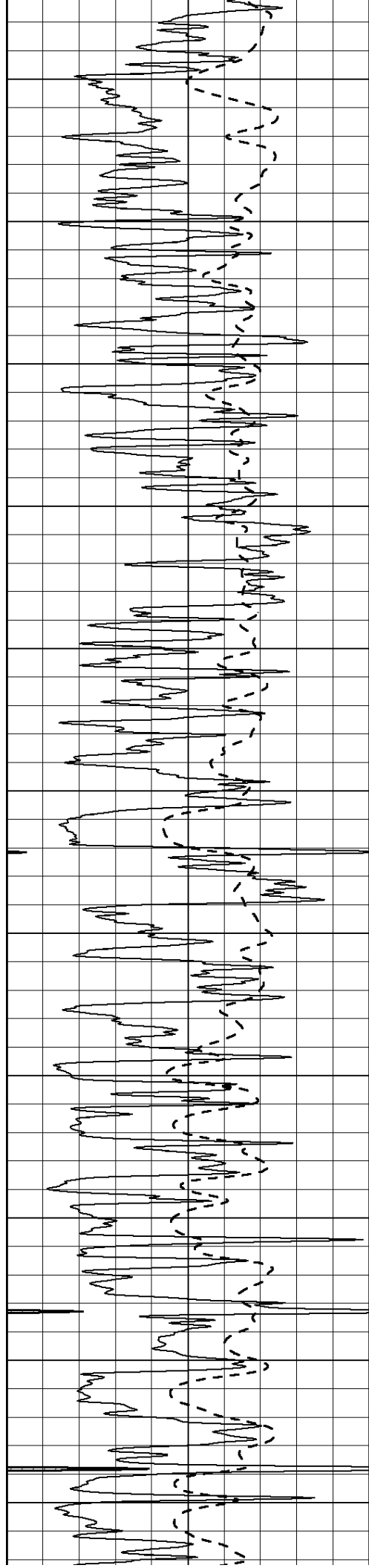






2700
2750
2800
2850
2900
2950
3000
3050
3100
3150
3200





3250

3300

3350

3400

3450

3500

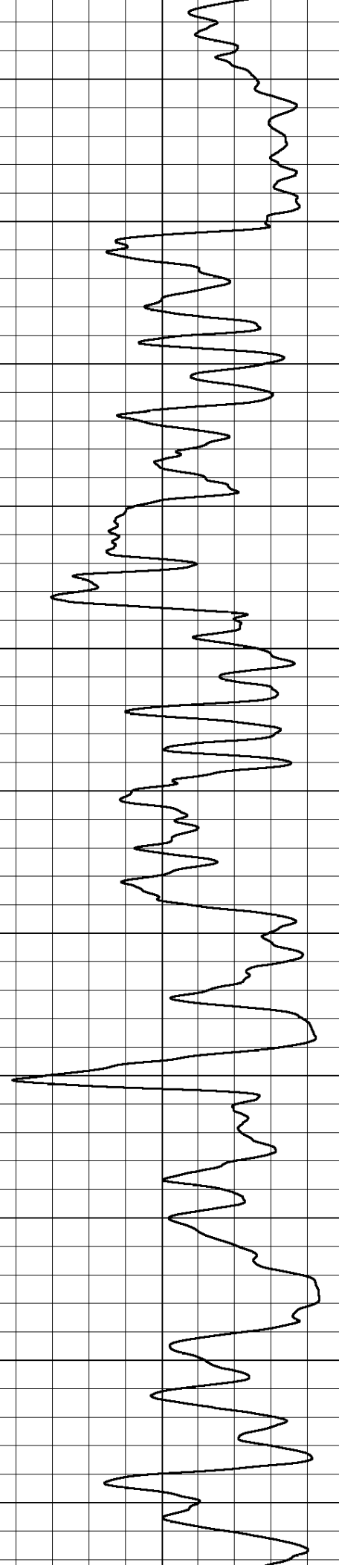
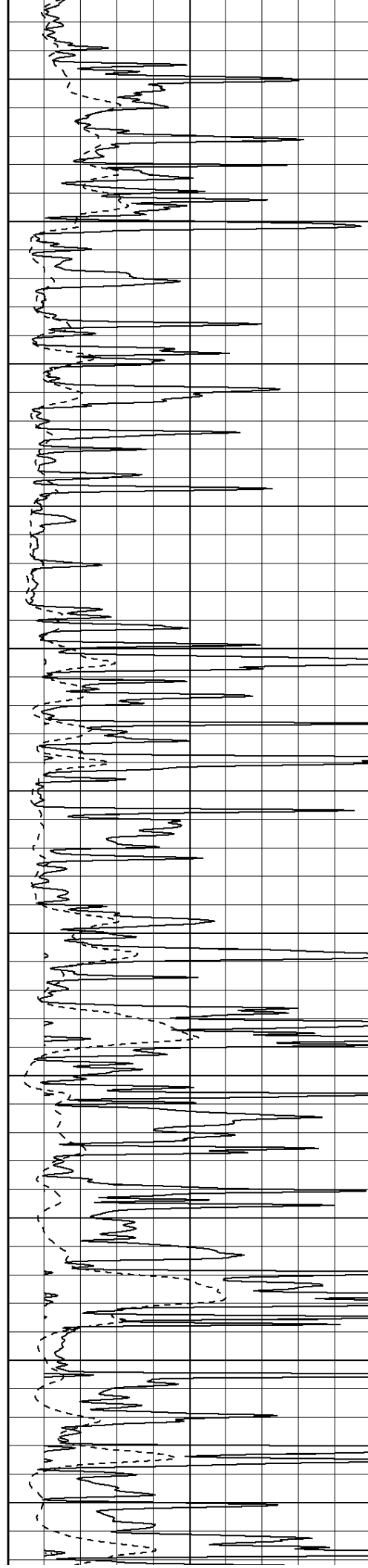
3550

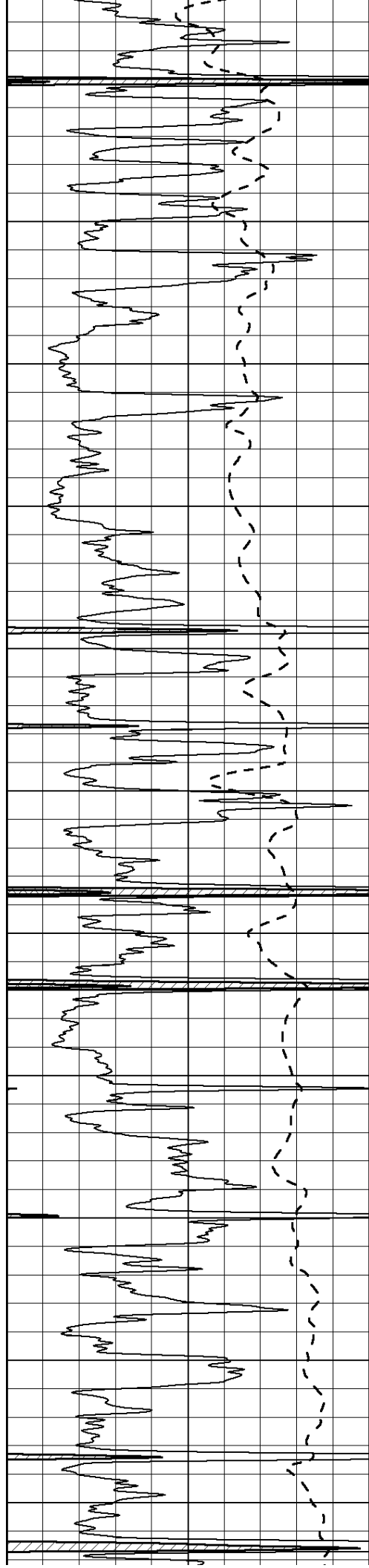
3600

3650

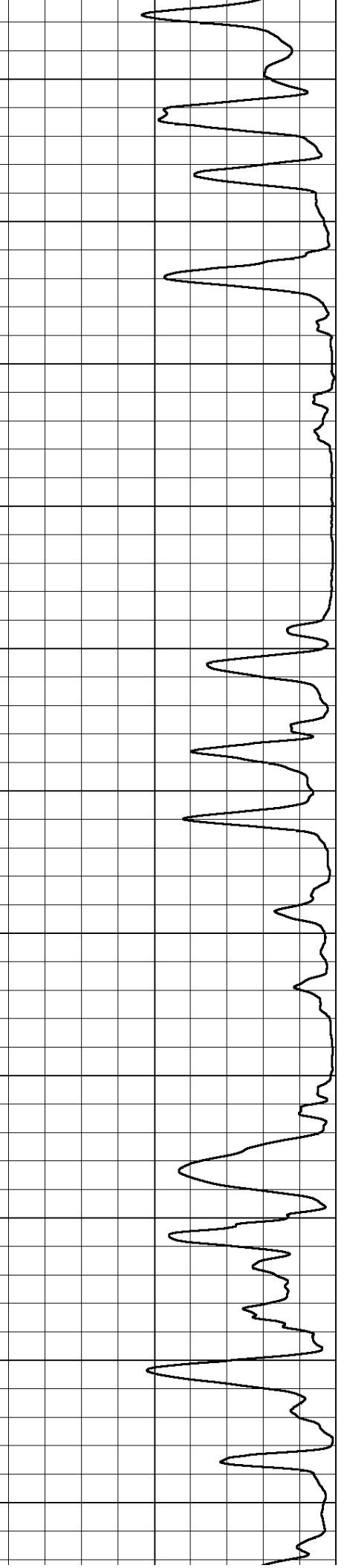
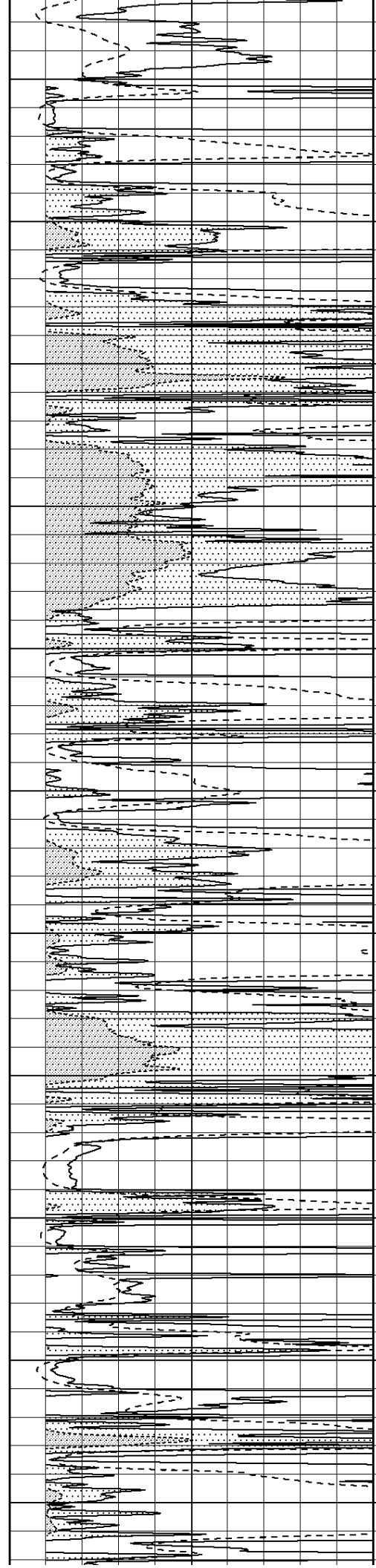
3700

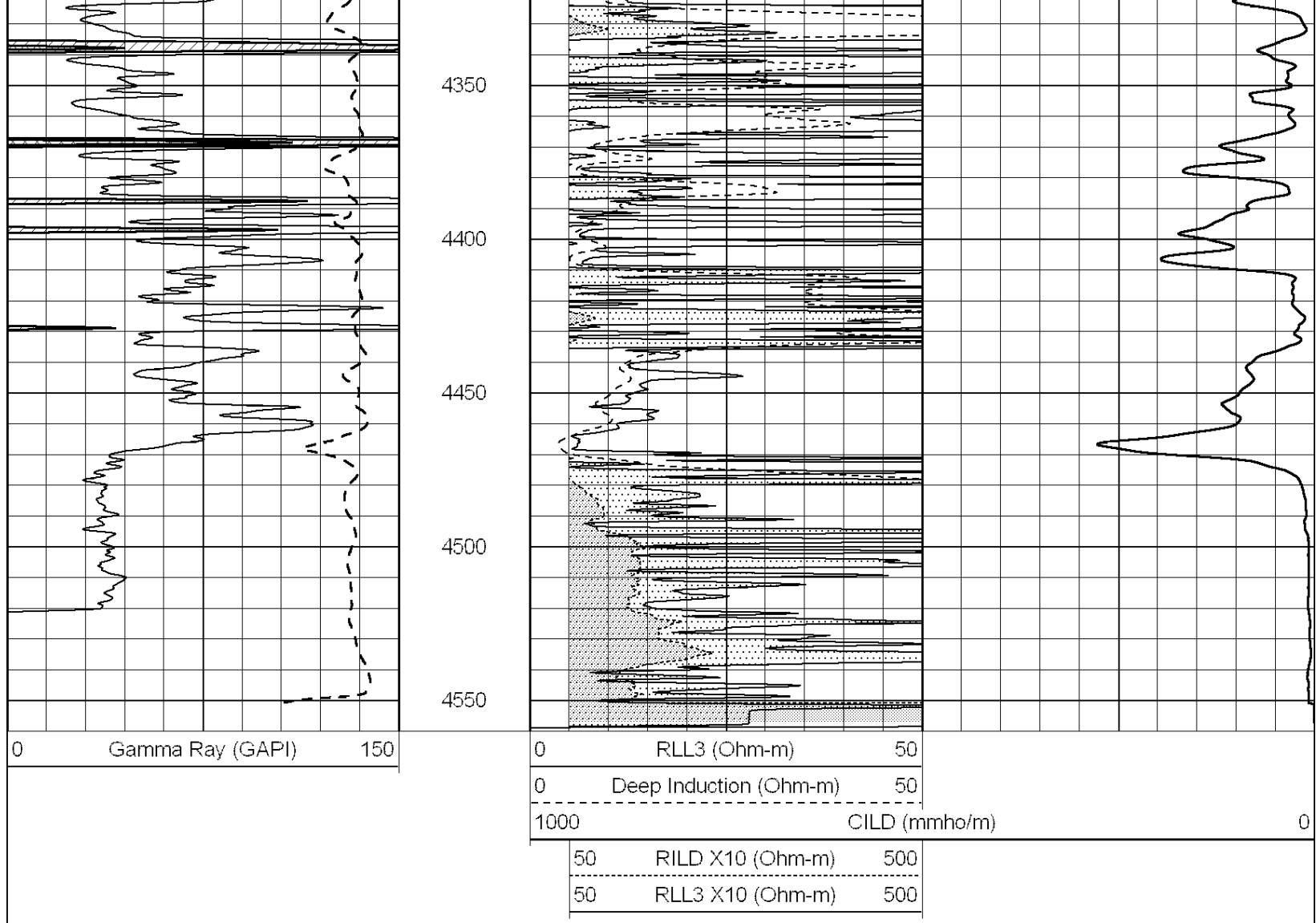
3750





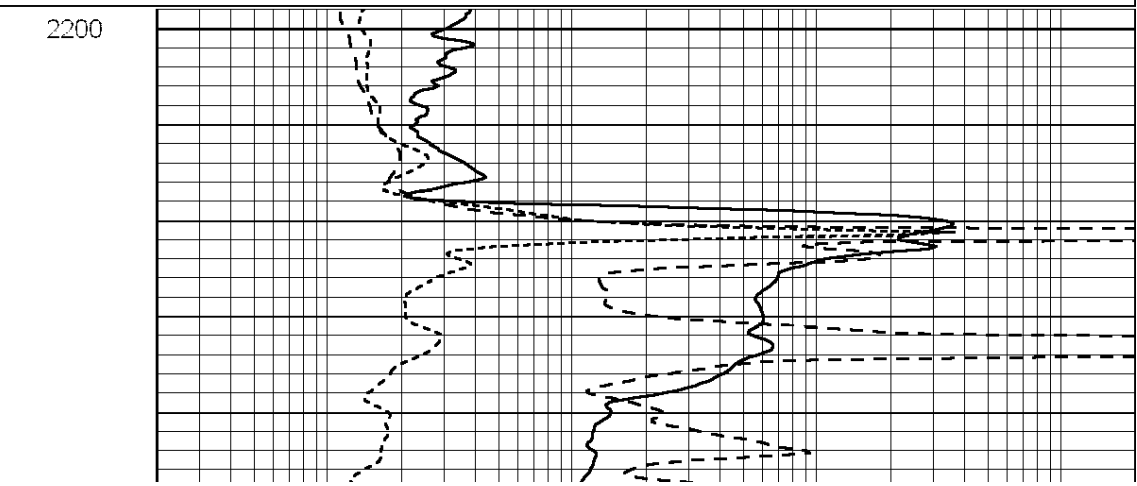
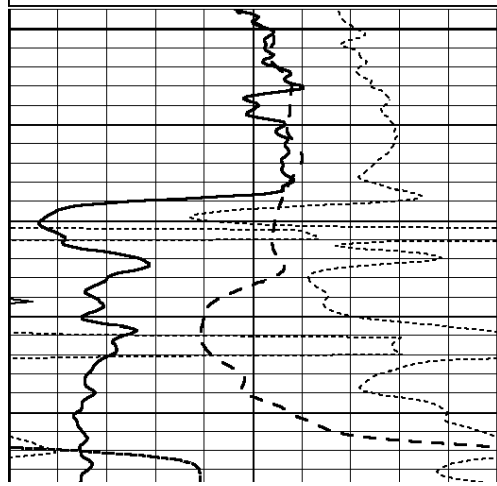
3800
3850
3900
3950
4000
4050
4100
4150
4200
4250
4300

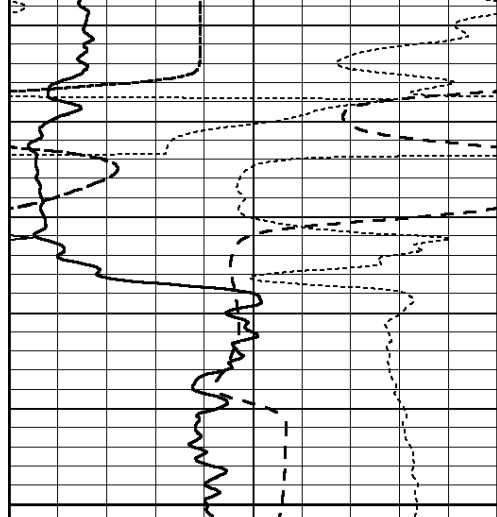




Database File: 012046ddn.db
 Dataset Pathname: pass4.7
 Presentation Format: _dil
 Dataset Creation: Fri Nov 29 09:35:05 2013 by Calc Open-Cased 090629
 Charted by: Depth in Feet scaled 1:240

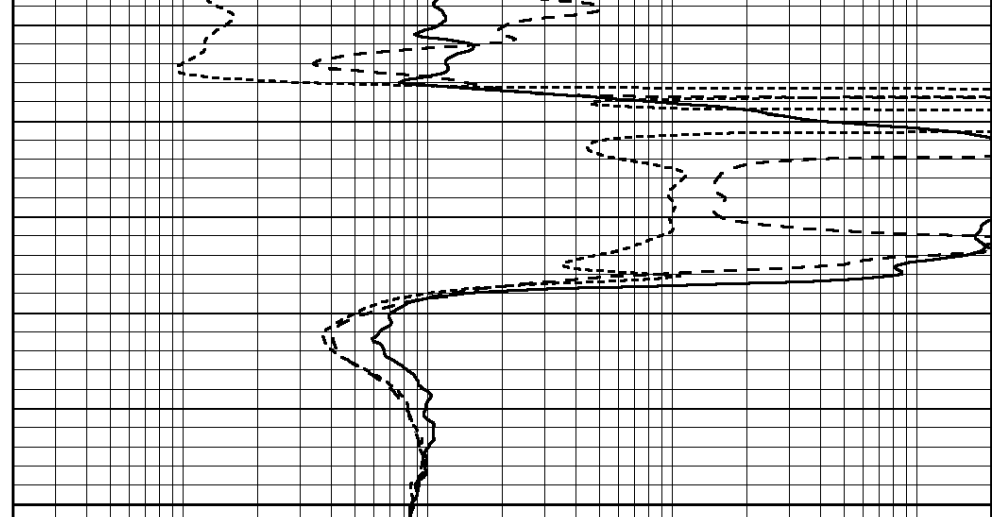
0	GAMMA RAY (GAPI)	150	0.2	RLL3 (Ohm-m)	2000
-100	SP (mV)	100	0.2	DEEP INDUCTION (Ohm-m)	2000
-250	RxoRt	50	0.2	MEDIUM INDUCTION (Ohm-m)	2000
0	MINMK	20			





2250
2300

0	GAMMA RAY (GAPI)	150
-100	SP (mV)	100
-250	RxoRt	50
0	MINMK	20

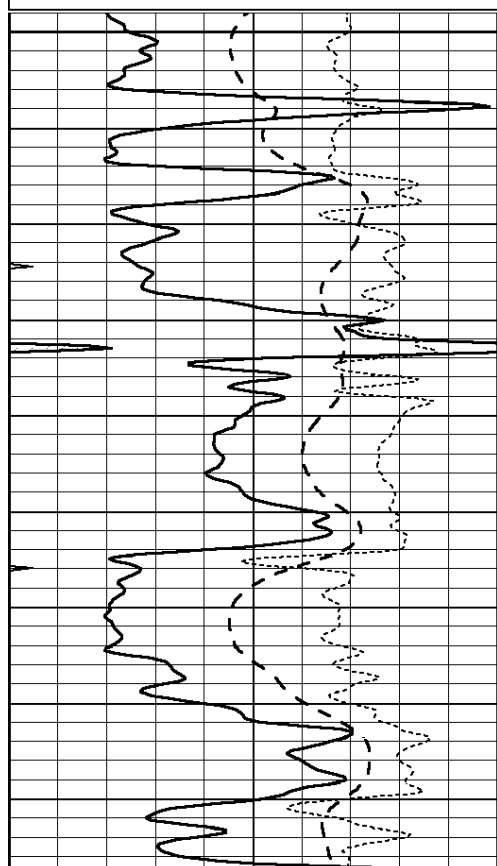


0.2	RLL3 (Ohm-m)	2000
0.2	DEEP INDUCTION (Ohm-m)	2000
0.2	MEDIUM INDUCTION (Ohm-m)	2000

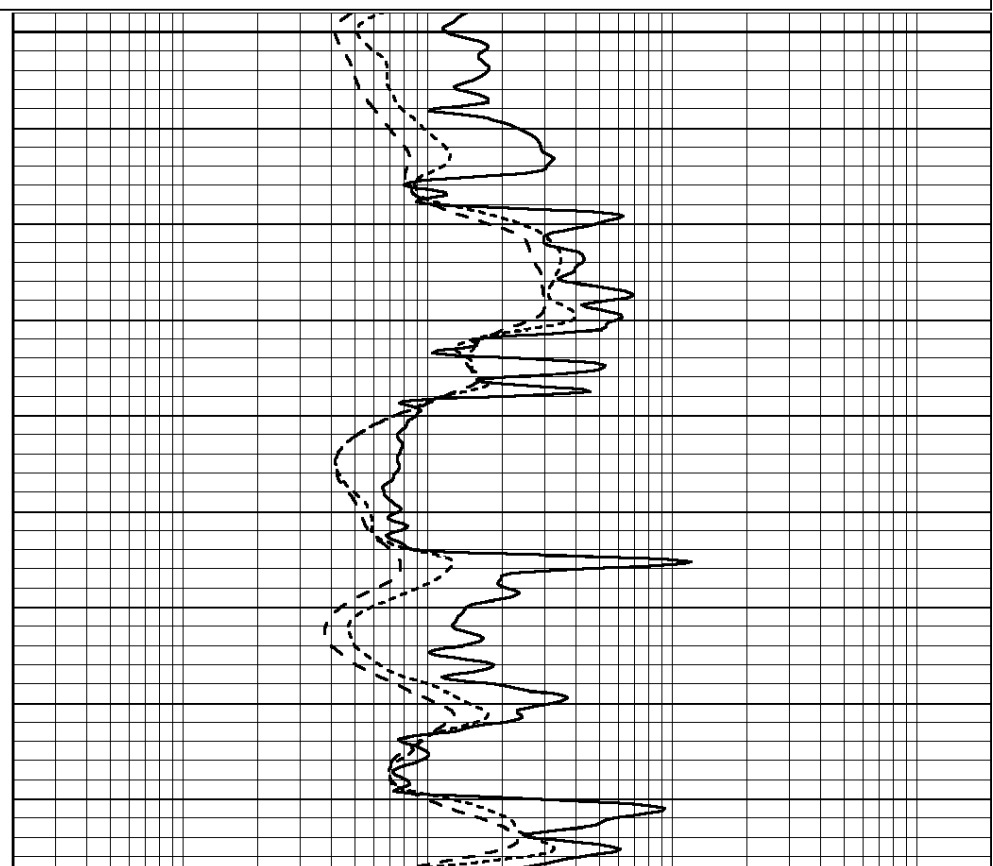
Database File: 012046ddn.db
 Dataset Pathname: pass4.7
 Presentation Format: _dil
 Dataset Creation: Fri Nov 29 09:35:05 2013 by Calc Open-Cased 090629
 Charted by: Depth in Feet scaled 1:240

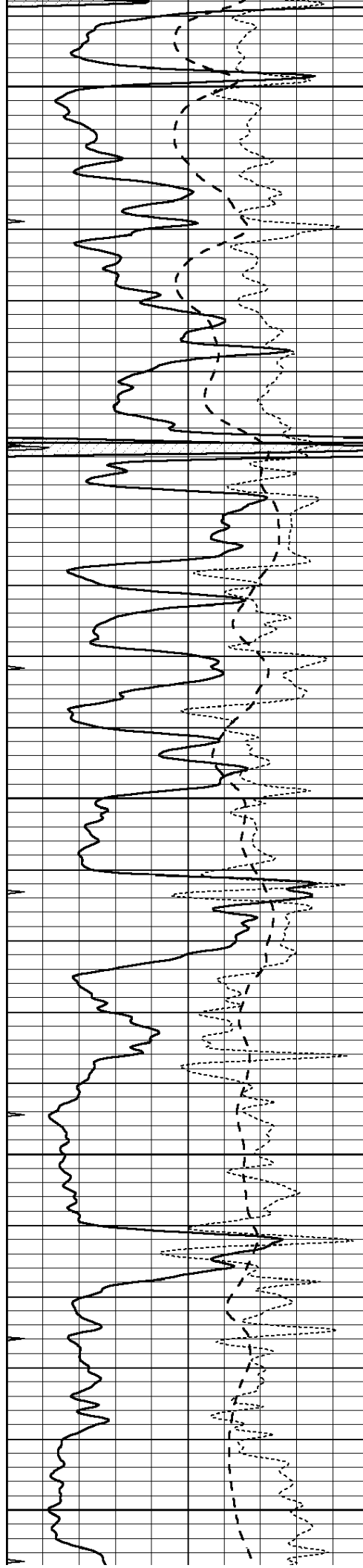
0	GAMMA RAY (GAPI)	150
-100	SP (mV)	100
-250	RxoRt	50
0	MINMK	20

0.2	RLL3 (Ohm-m)	2000
0.2	DEEP INDUCTION (Ohm-m)	2000
0.2	MEDIUM INDUCTION (Ohm-m)	2000



3650
3700





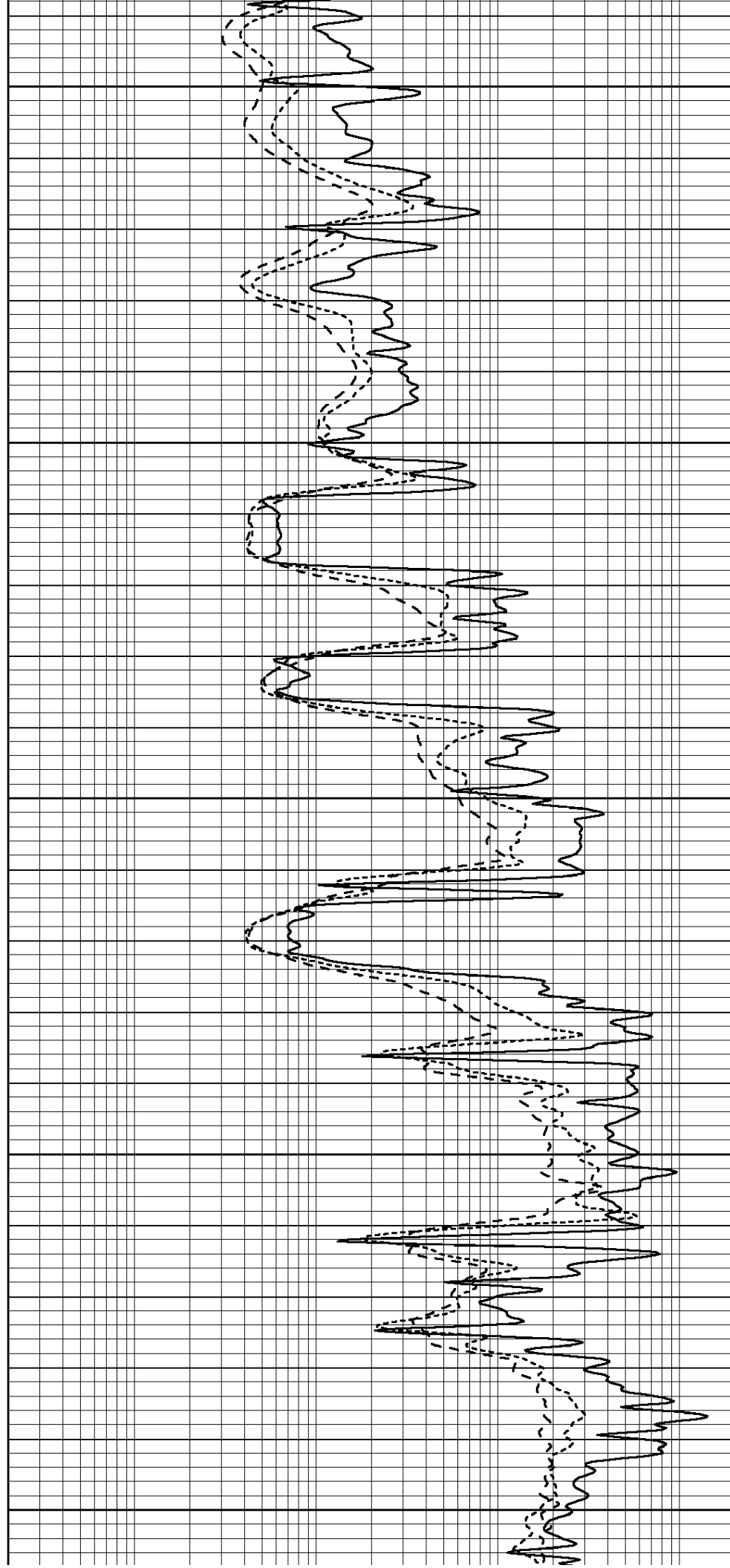
3750

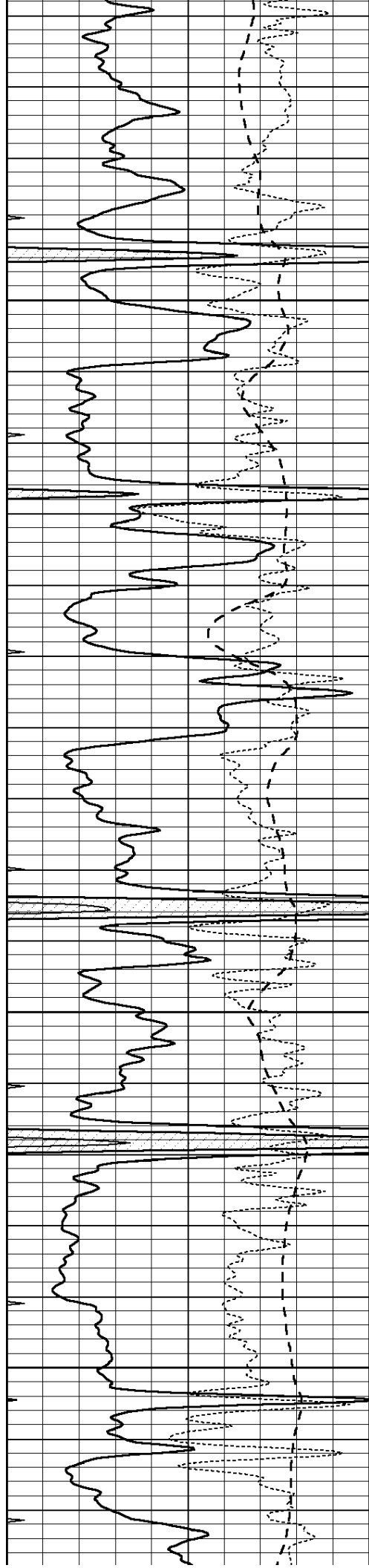
3800

3850

3900

3950



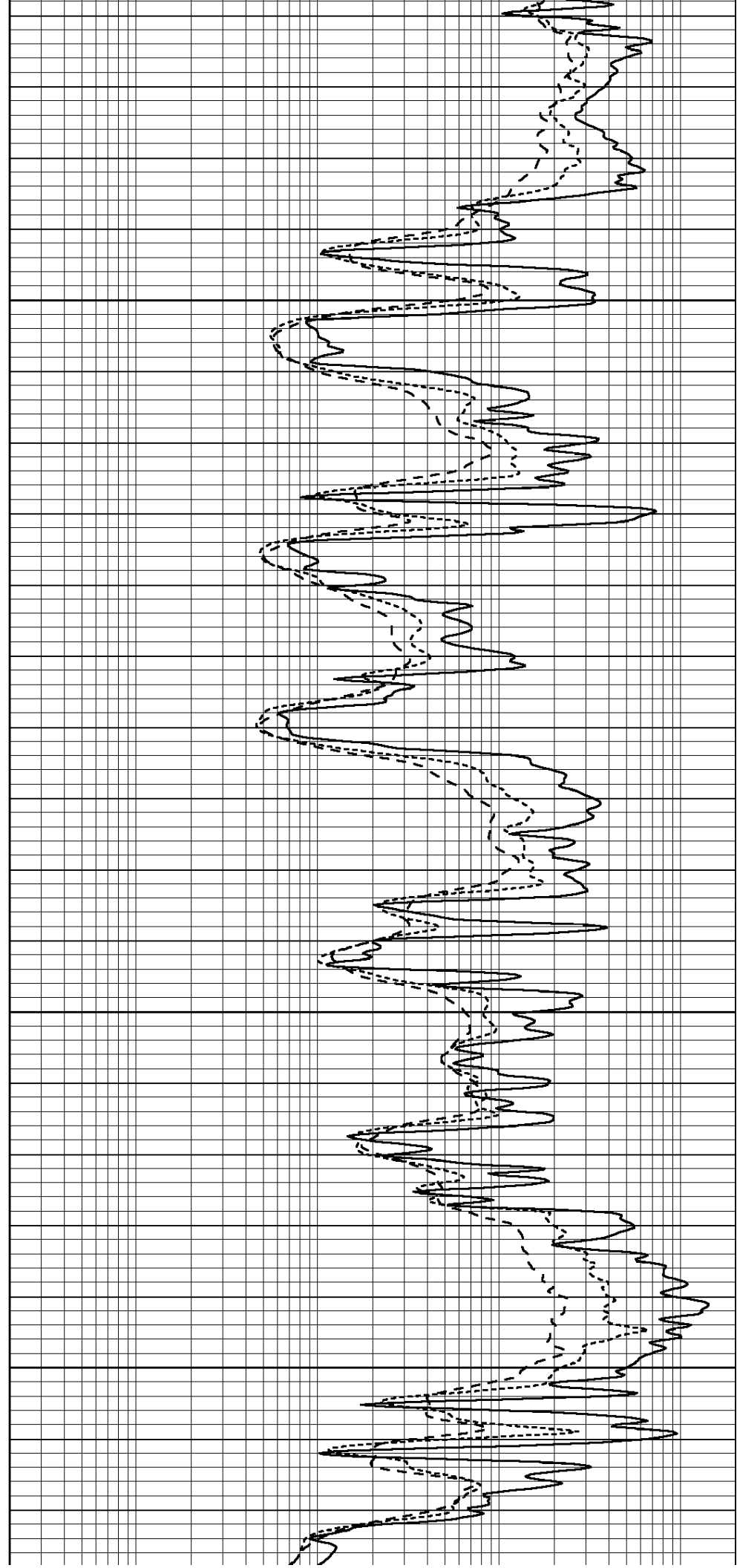


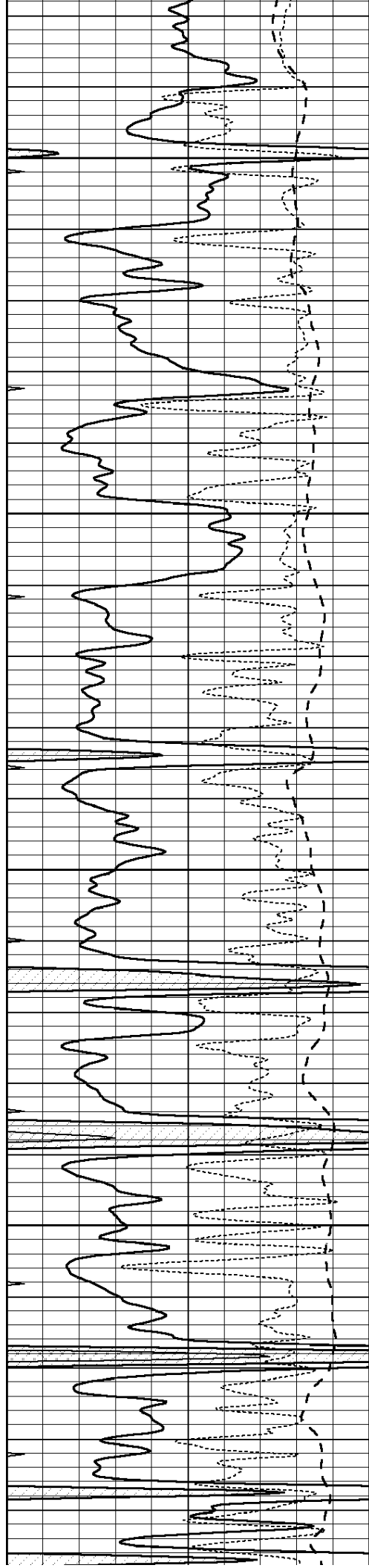
4000

4050

4100

4150



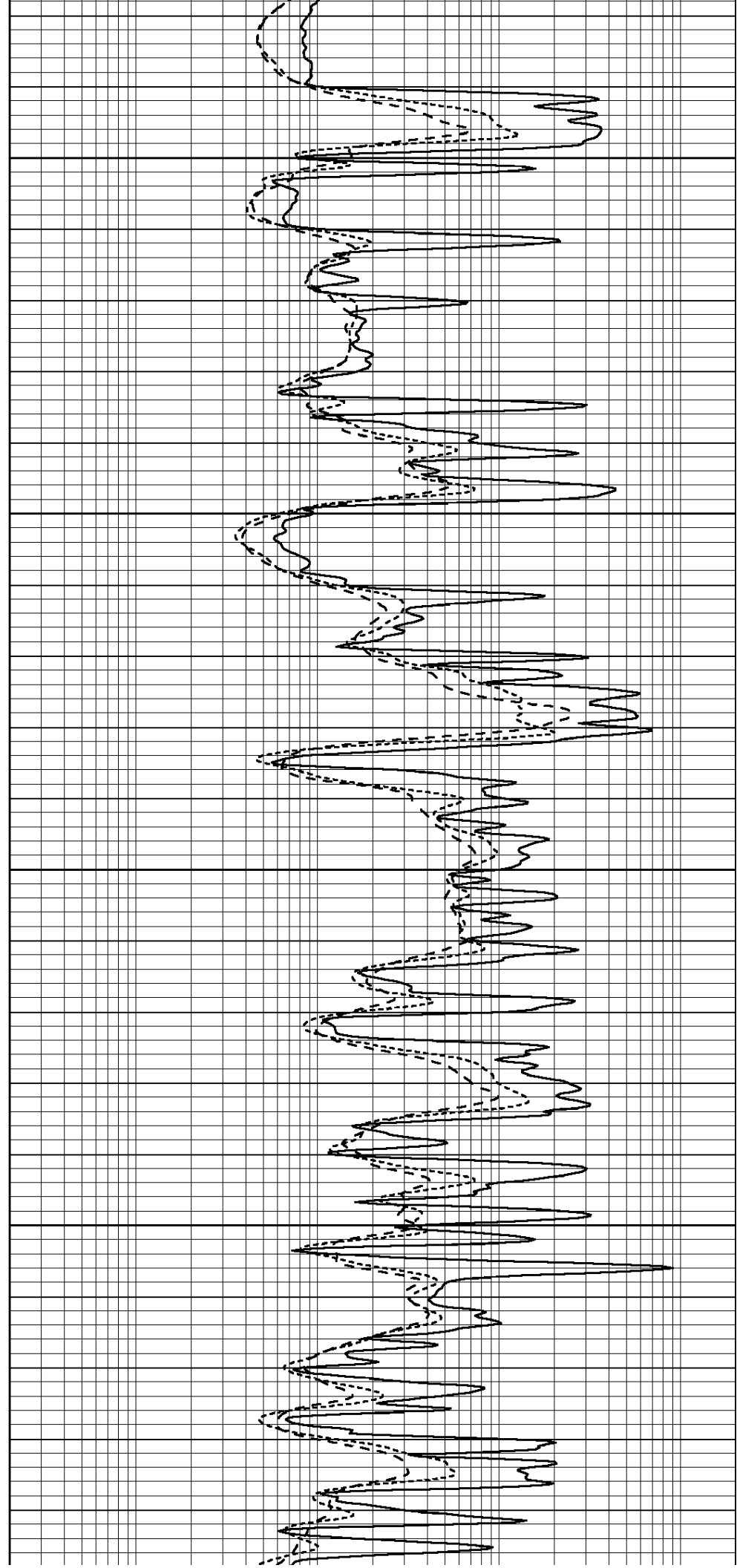


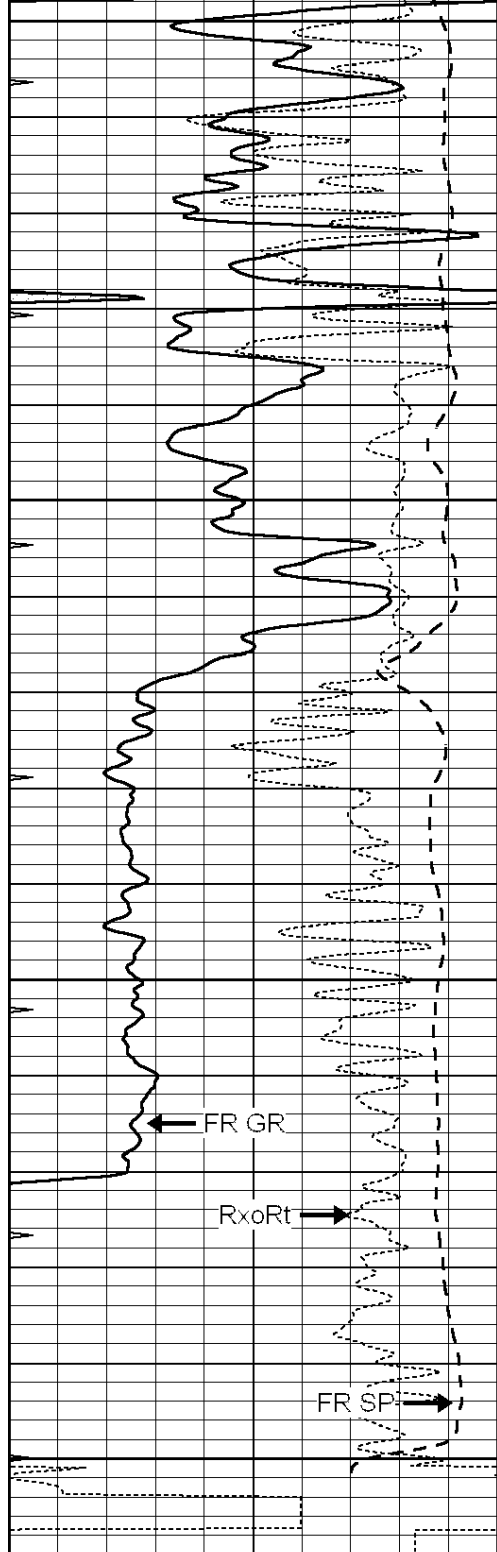
4200

4250

4300

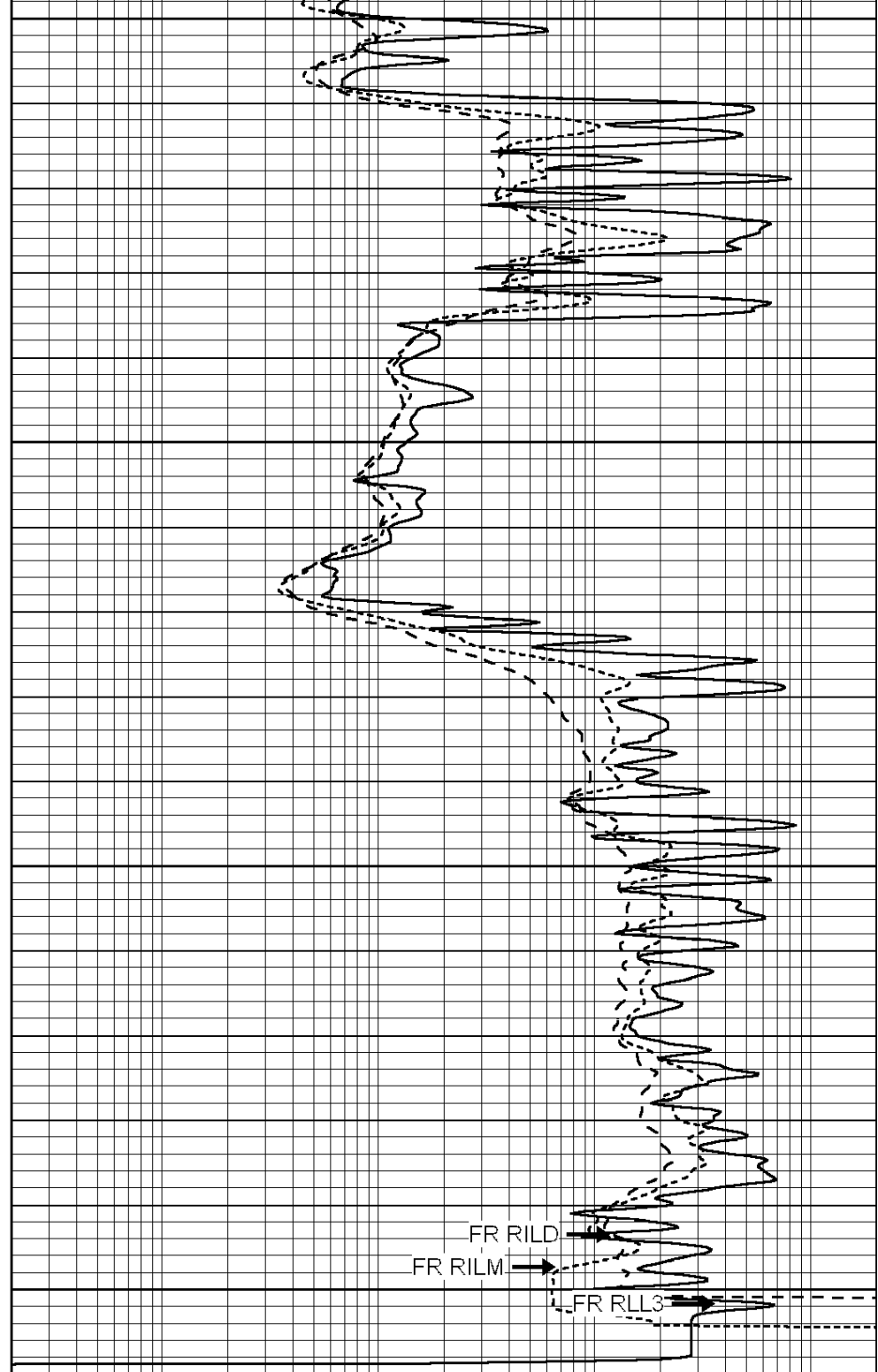
4350





4400
4450
4500
4550
LTD 4554

0	GAMMA RAY (GAPI)	150
-100	SP (mV)	100
-250	RxoRt	50
0	MINMK	20

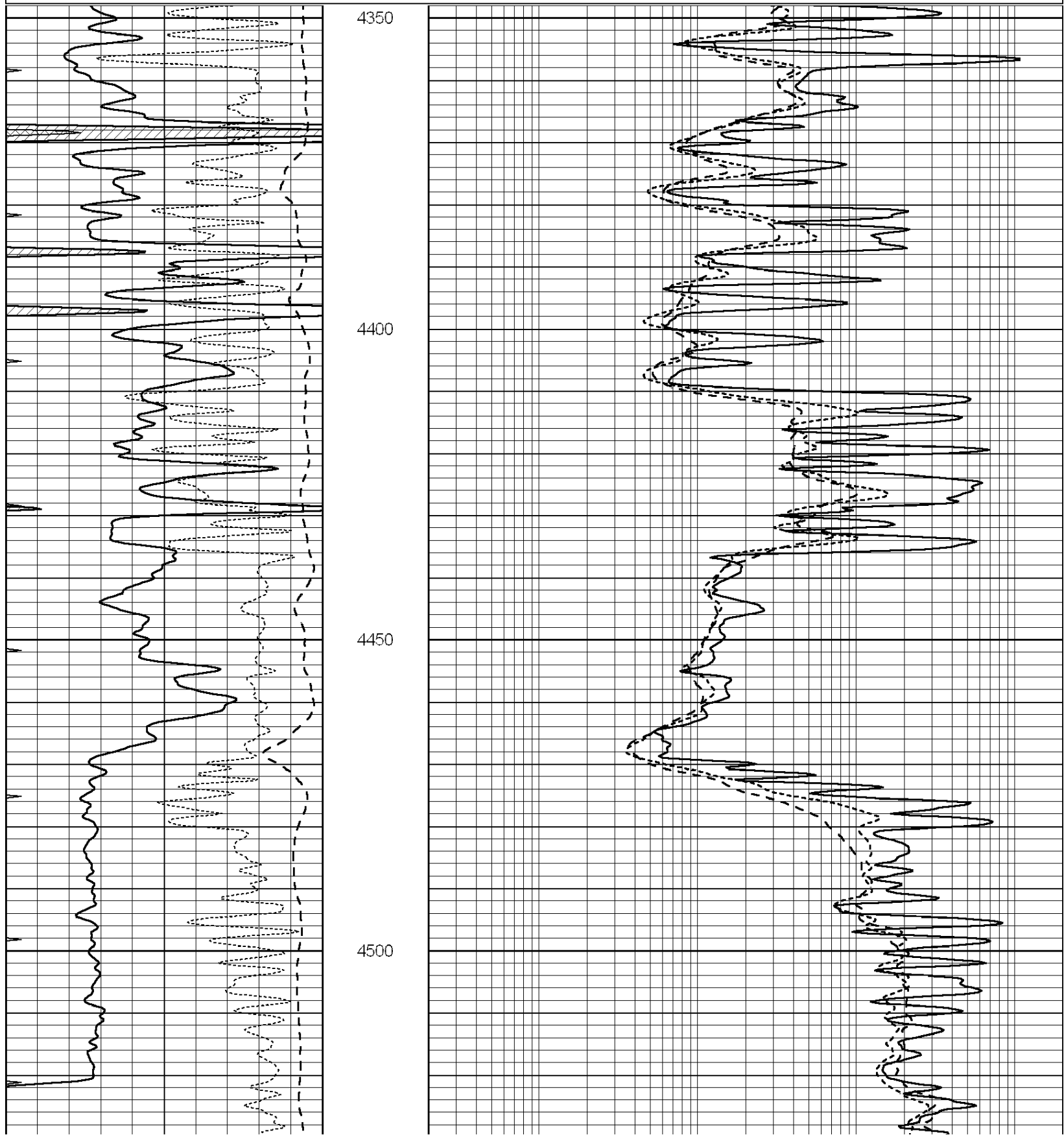


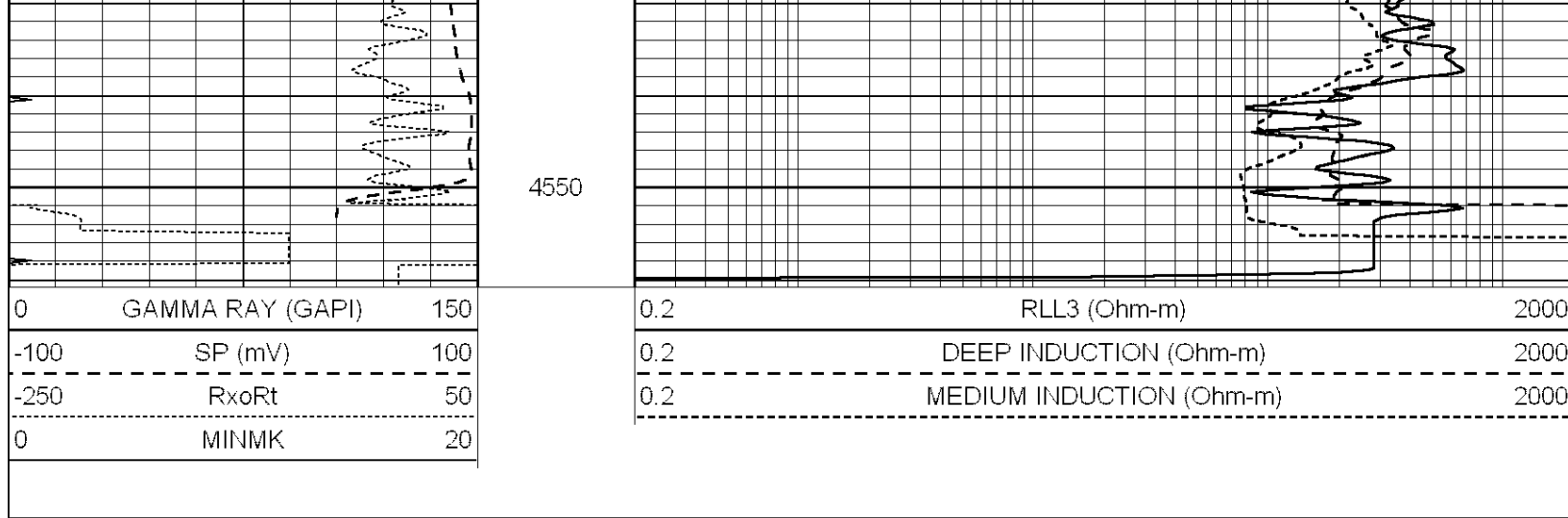
0.2	RLL3 (Ohm-m)	2000
0.2	DEEP INDUCTION (Ohm-m)	2000
0.2	MEDIUM INDUCTION (Ohm-m)	2000



REPEAT SECTION

0	GAMMA RAY (GAPI)	150	0.2	RLL3 (Ohm-m)	2000
-100	SP (mV)	100	0.2	DEEP INDUCTION (Ohm-m)	2000
-250	RxoRt	50	0.2	MEDIUM INDUCTION (Ohm-m)	2000
0	MINMK	20			





Calibration Report

Database File: 012046ddn.db
 Dataset Pathname: pass4.7
 Dataset Creation: Fri Nov 29 09:35:05 2013 by Calc Open-Cased 090629

Dual Induction Calibration Report

Serial-Model: DIL3-GEAR
 Performed: Sun Nov 24 23:25:37 2013

Loop:	Readings				References		Results	
	Air	Loop	V		Air	Loop	m	b
Deep	0.011	0.656	V	0.000	400.000	mmho/m	500.000	5.000
Medium	0.013	0.740	V	0.000	462.500	mmho/m	580.000	5.000
Internal:	Zero	Cal		Zero	Cal		m	b
Deep	0.002	0.645	V	0.000	400.000	mmho/m	560.000	-1.071
Medium	0.007	0.740	V	0.000	462.500	mmho/m	540.000	-4.000

Compensated Density Calibration Report

Serial-Model: GEAR1-GEARHART
 Source / Verifier: 147 / 147
 Master Calibration Performed: Sun Nov 24 21:22:19 2013

Master Calibration

	Density		Far Detector	Near Detector
Magnesium	1.710	g/cc	1205.77	610.74 cps
Aluminum	2.580	g/cc	271.21	419.72 cps
Spine Angle = 75.89		Density/Spine Ratio = 0.566		
	Size		Reading	
Small Ring	8.20	in	4.83	V
Large Ring	14.00	in	7.01	V

Compensated Neutron Calibration Report

Serial Number: 080620
 Tool Model: Probe

PRE-SURVEY VERIFICATION

Detector	Readings	Measured	Target
----------	----------	----------	--------

Detector	Readings	Measured	Target
Short Space	cps		
Long Space	cps	pu	pu

POST-SURVEY VERIFICATION

Detector	Readings	Measured	Target
Short Space	cps		
Long Space	cps	pu	pu

Gamma Ray Calibration Report

Serial Number:	7	
Tool Model:	Probe1	
Performed:	Tue Apr 16 01:45:59 2013	
Calibrator Value:	1.0	GAPI
Background Reading:	0.0	cps
Calibrator Reading:	1.0	cps
Sensitivity:	0.5000	GAPI/cps