



**COMPLETION
& PRODUCTION
SERVICES CO.**

**MICRO
LOG**

Company PELICAN HILL OIL & GAS, INC.
Well T-NELSON #2-30
Field WILDCAT
County GOVE State KANSAS

Company PELICAN HILL OIL & GAS, INC.
Well T-NELSON #2-30
Field WILDCAT
County GOVE
State KANSAS

Location: API #: 15-063-22161.00.00
335' FNL & 2075' FEL
SE - NW - NW - NE/4
SEC 30 TWP 14S RGE 31W
Permanent Datum GROUND LEVEL Elevation 2778
Log Measured From KELLY BUSHING 10' A.G.L.
Drilling Measured From KELLY BUSHING
Other Services
CNL/CDL/DIL
SON/FRAC
Elevation
K.B. 2788
D.F. 2786
G.L. 2778

Date	11-29-13		
Run Number	TWVO		
Depth Driller	4544		
Depth Logger	4554		
Bottom Logged Interval	4536		
Top Log Interval	3650		
Casing Driller	8 5/8 @ 256'		
Casing Logger	258'		
Bit Size	7.875		
Type Fluid in Hole	CHEMICAL MUD	CHLORIDES 3.000	
Density / Viscosity	9.3 / 55		
pH / Fluid Loss	10.5 / 6.4		
Source of Sample	FLOWLINE		
Rim @ Meas. Temp	0.95 @ 69F		
Rmf @ Meas. Temp	0.71 @ 69F		
Rmc @ Meas. Temp	1.14 @ 69F		
Source of Rmf / Rmc	MEASURED		
Rim @ BHT	0.50 @ 129F		
Time Circulation Stopped	2 HOURS		
Time Logger on Bottom			
Maximum Recorded Temperature	129F		
Equipment Number	860		
Location	HAYS, KS.		
Recorded By	IAN MABB		
Witnessed By	ROGER FISHER		

<<< Fold Here >>>

All interpretations are opinions based on inferences from electrical or other measurements and we cannot and do not guarantee the accuracy or correctness of any interpretation, and we shall not, except in the case of gross or willful negligence on our part, be liable or responsible for any loss, costs, damages, or expenses incurred or sustained by anyone resulting from any interpretation made by any of our officers, agents or employees. These interpretations are also subject to our general terms and conditions set out in our current Price Schedule.

Comments

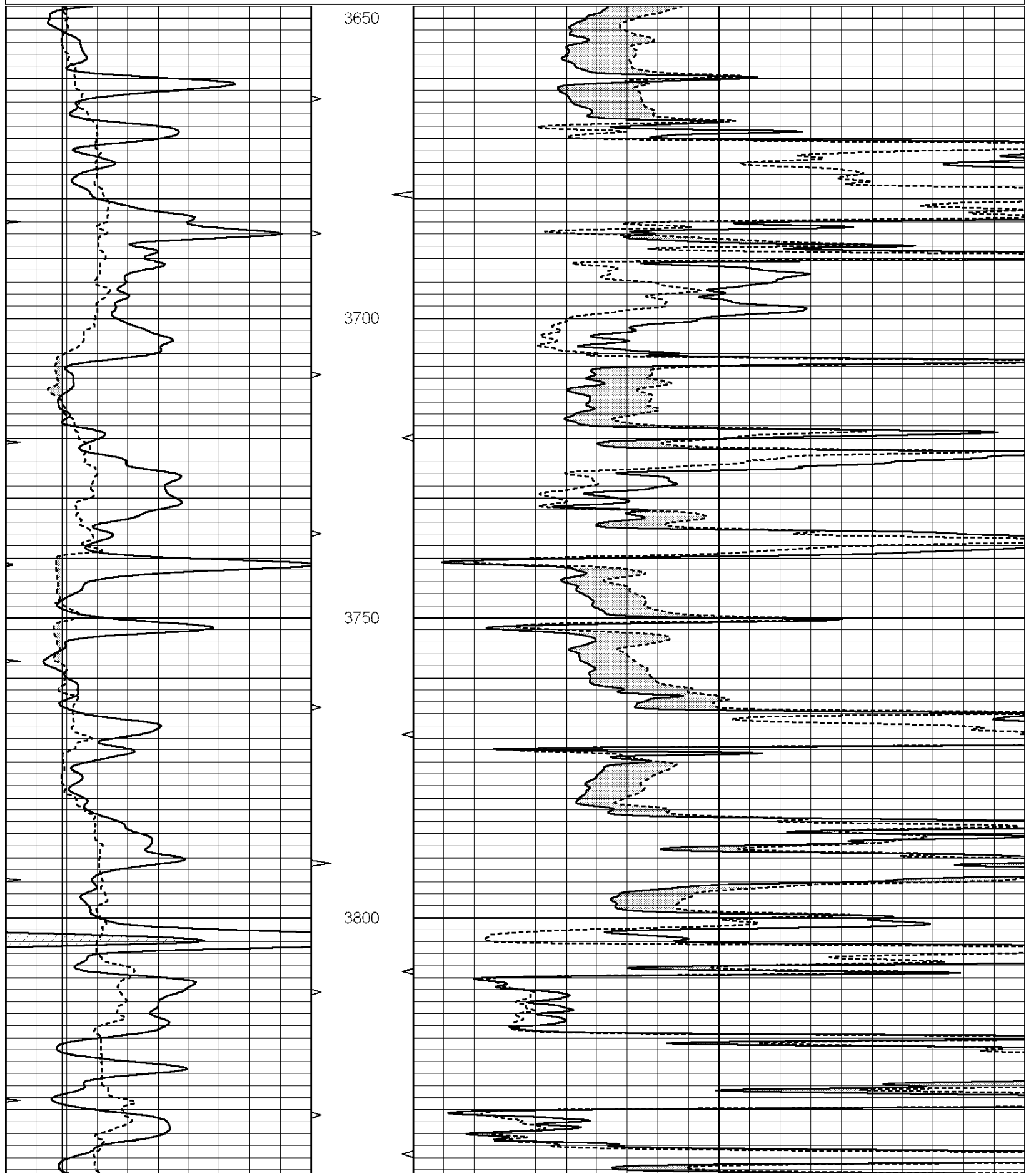
NABORS COMPLETION & PRODUCTION SERVICES
785-628-6395
THANK YOU FOR YOUR BUSINESS
DIRECTIONS: OAKLEY, KS. - 20 MILES SOUTH TO JAYHAWK RD. - 3 MILES EAST TO GOVE 14
AFTER THE SECOND CATTLE GUARD WEST INTO

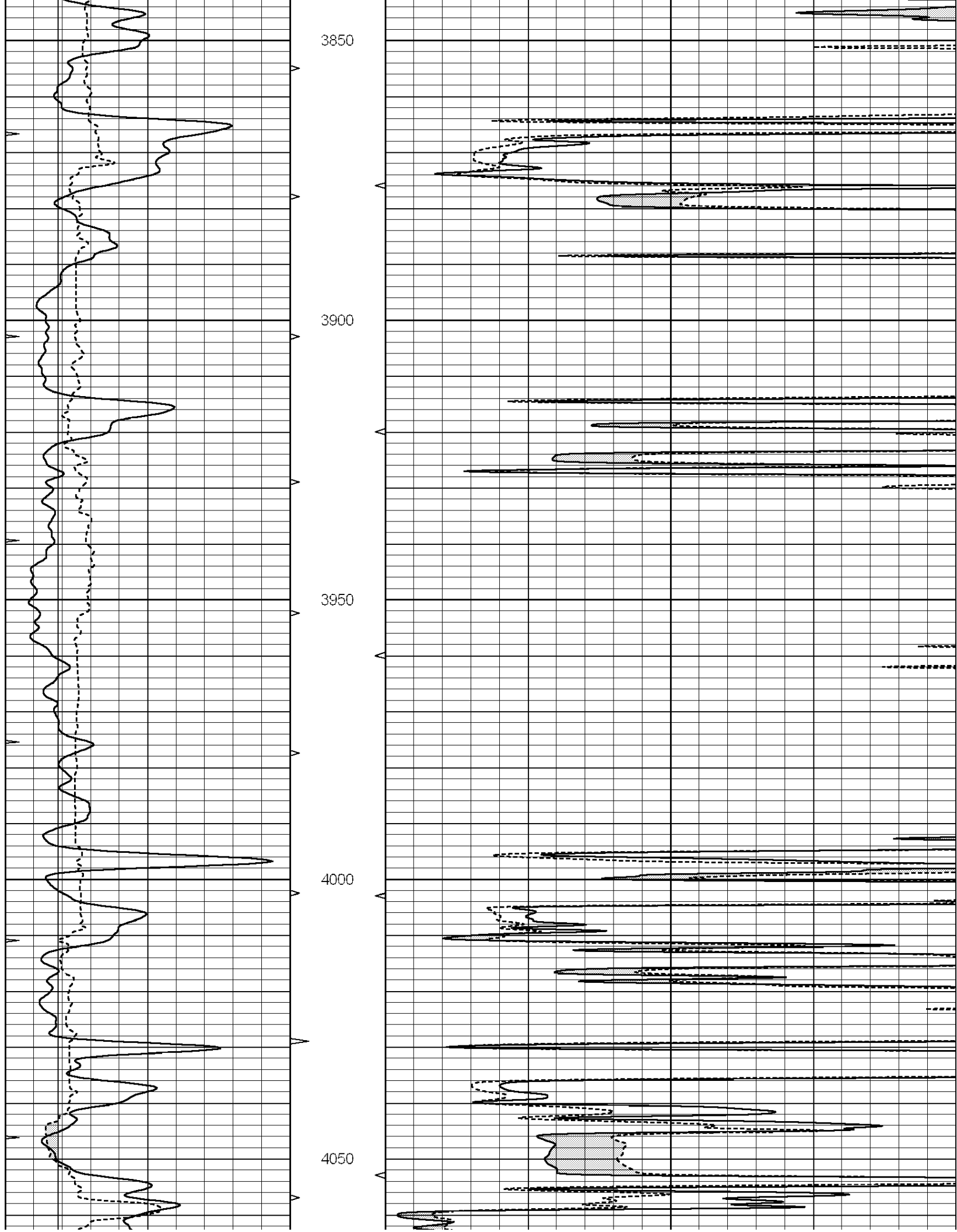
Charted by:

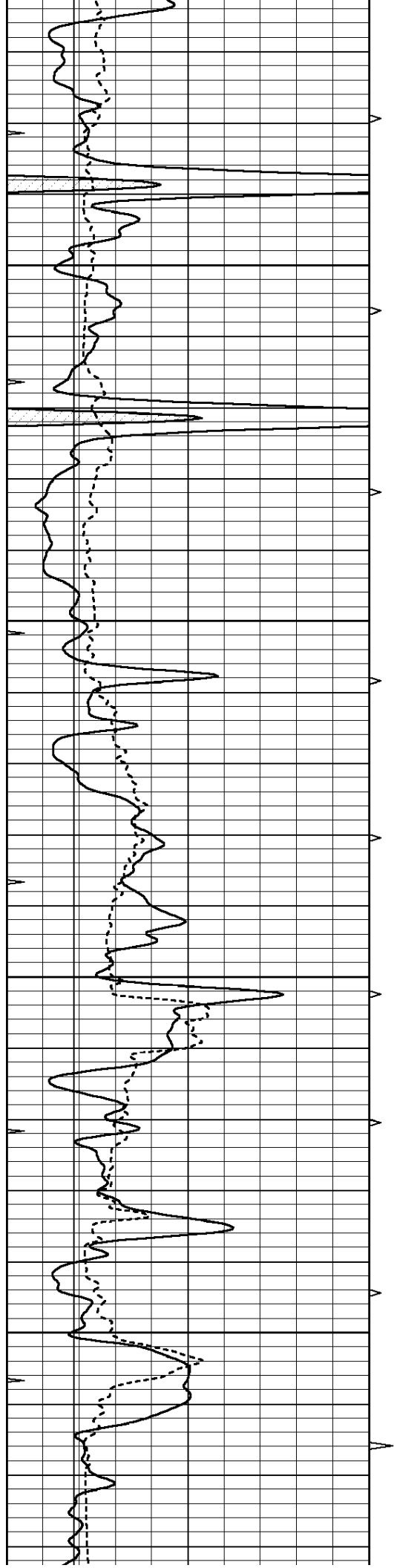
Depth in Feet scaled 1:240

0	GAMMA RAY (GAPI)	150
6	MELCAL (in)	16
0	MINMK	20

0	MEL1.5 (Ohm-m)	40
0	MEL2.0 (Ohm-m)	40





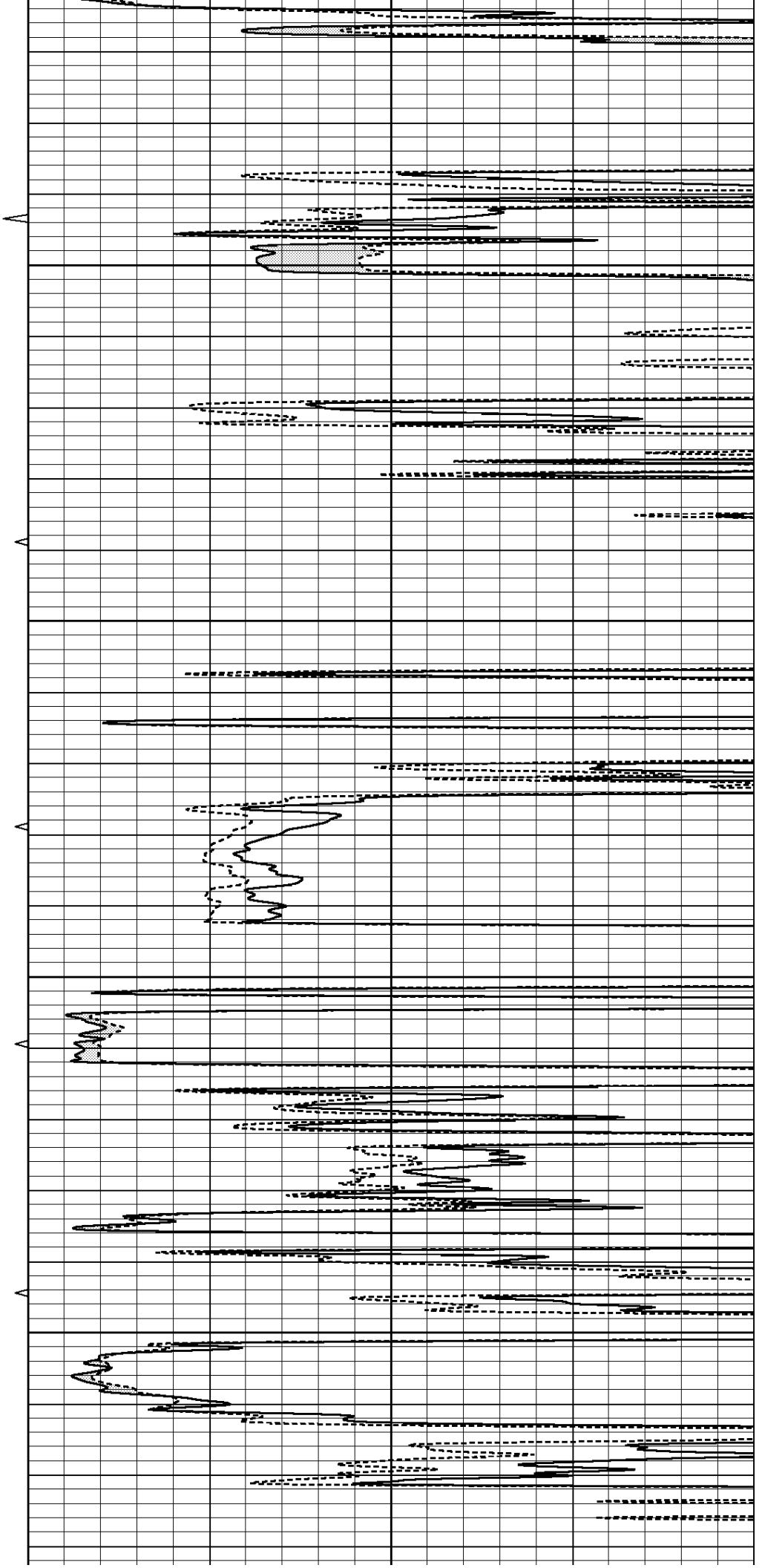


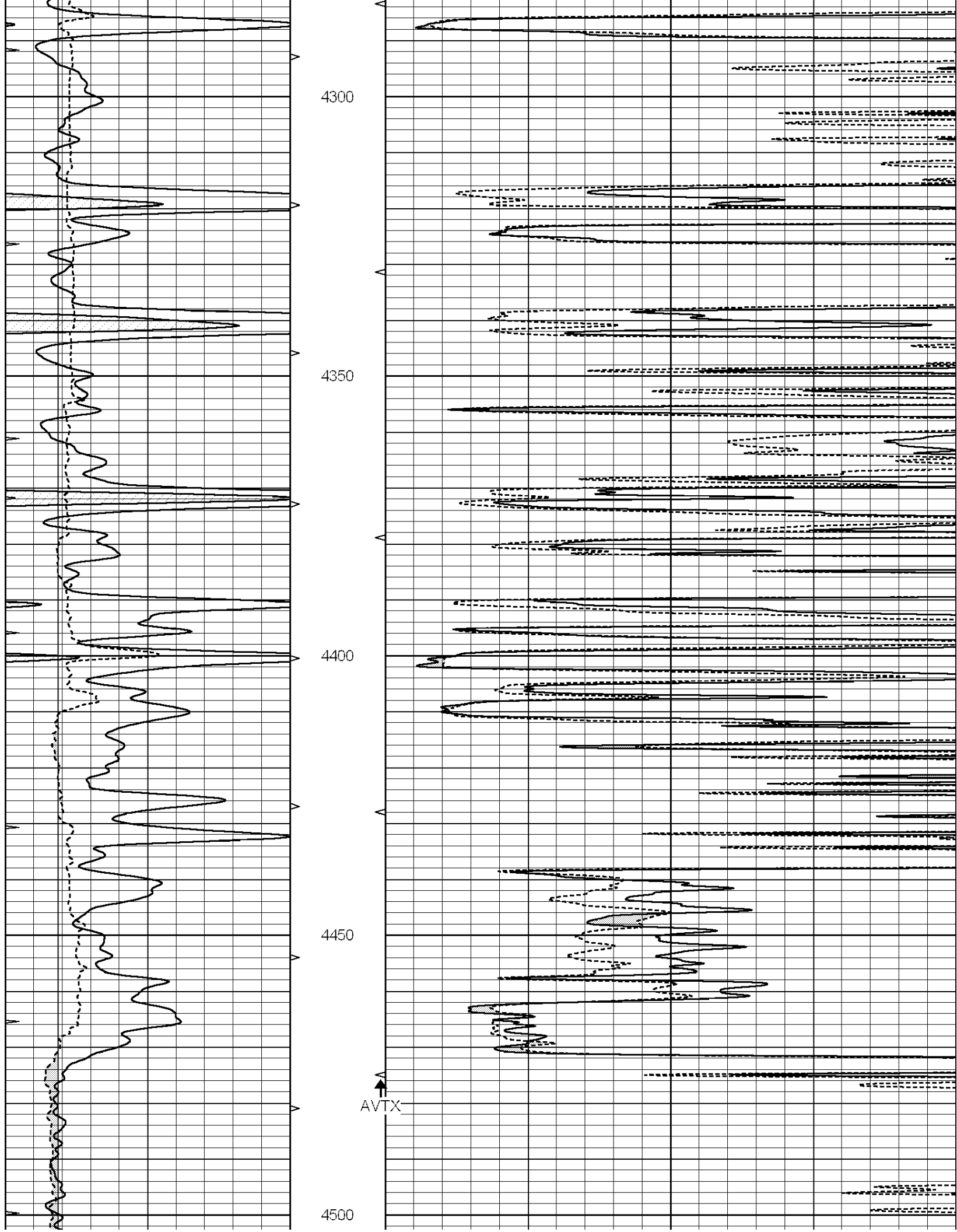
4100

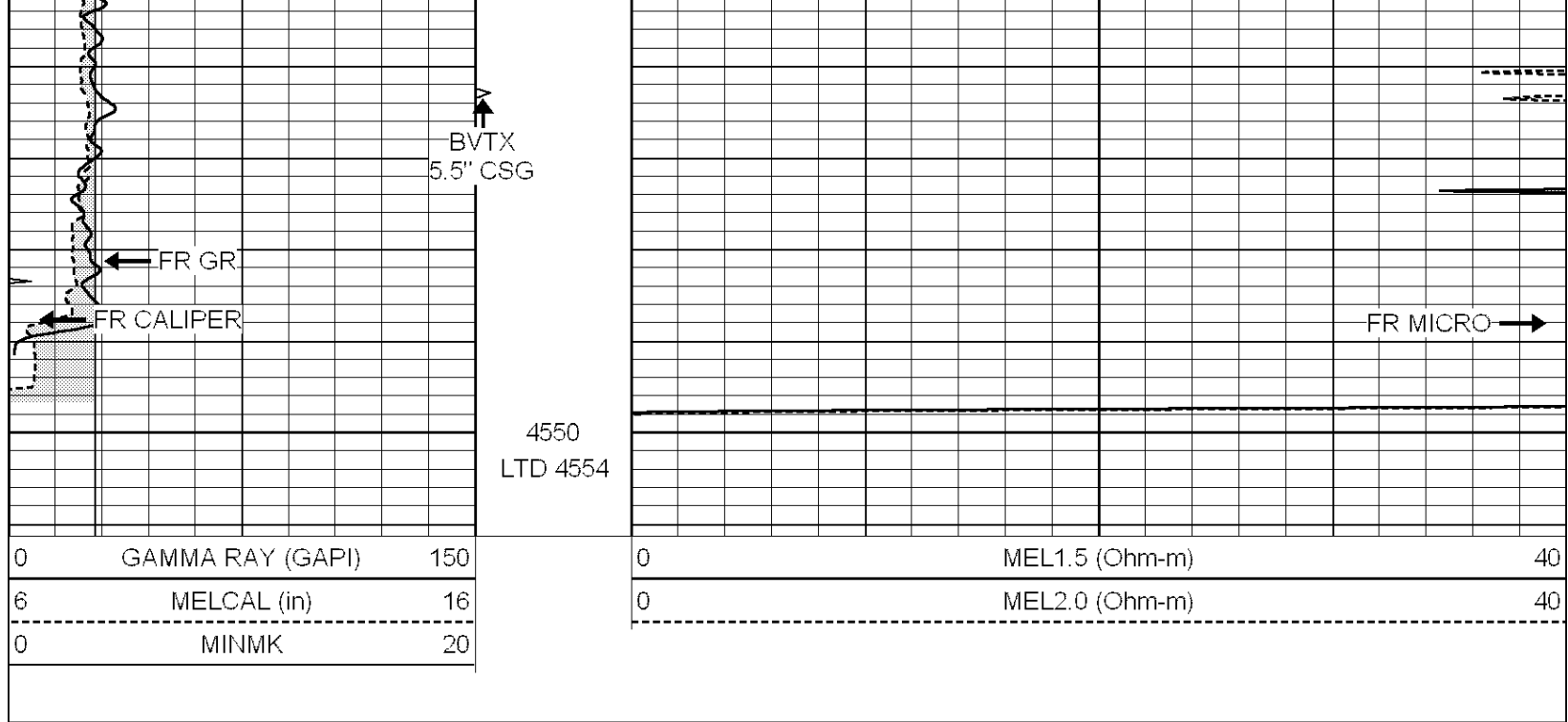
4150

4200

4250



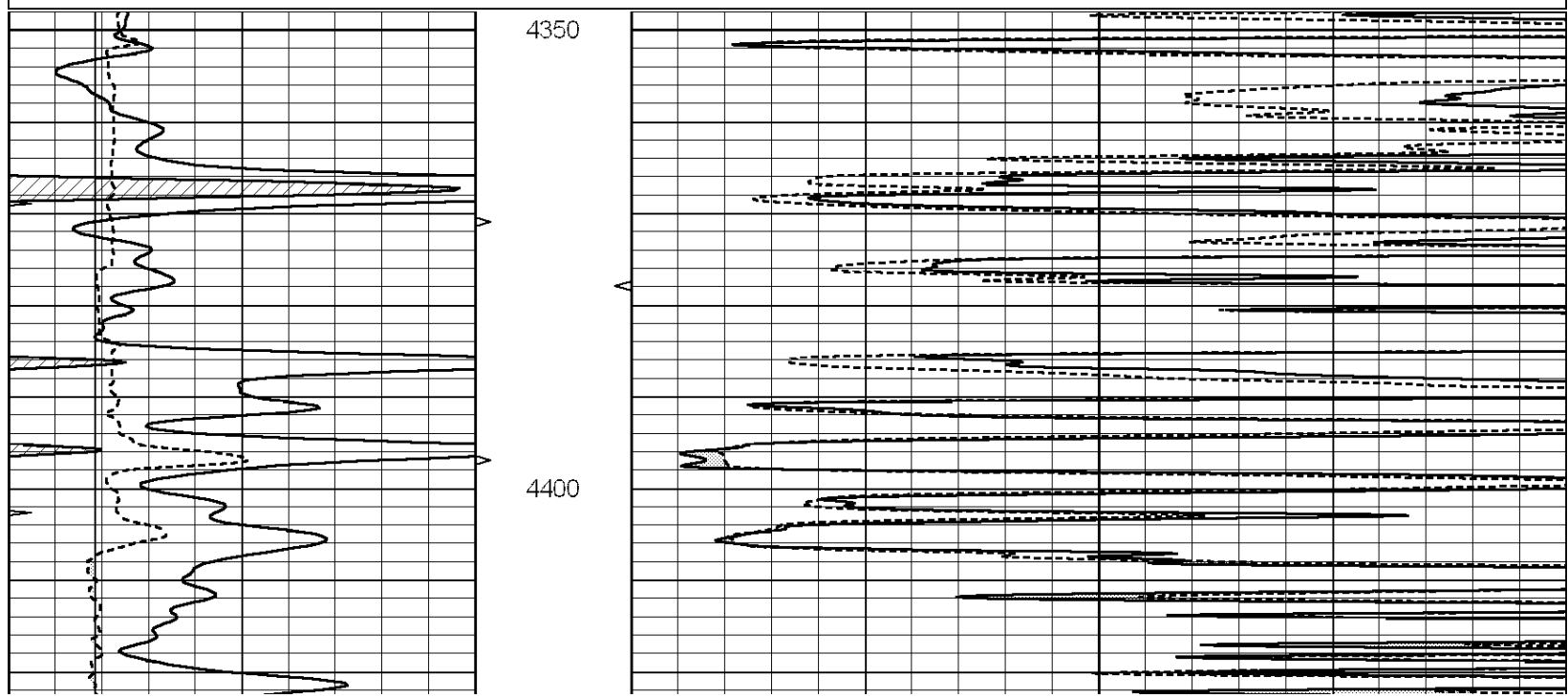


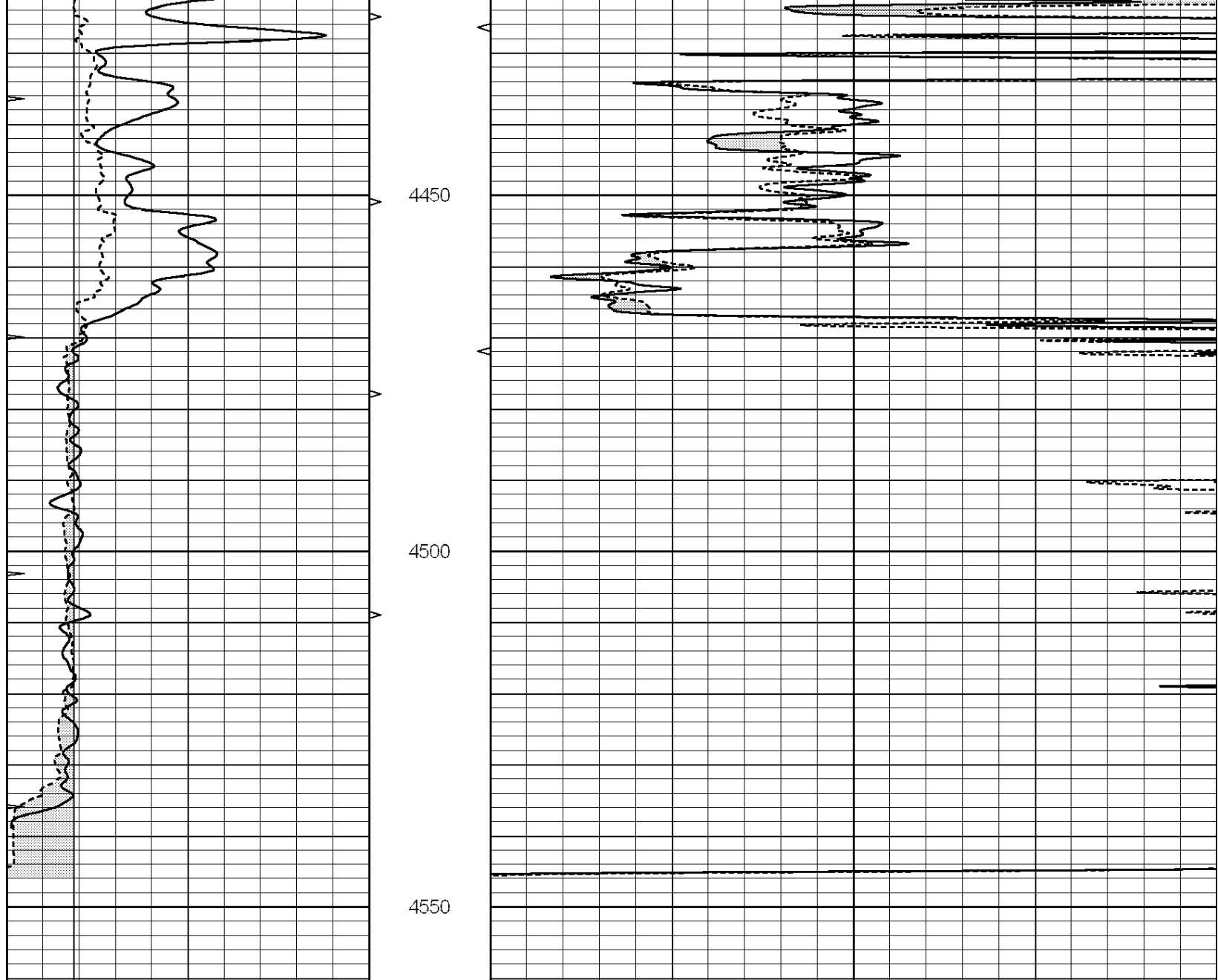


REPEAT SECTION

Database File: 012046ddn.db
 Dataset Pathname: pass6.4
 Presentation Format: _micro
 Dataset Creation: Fri Nov 29 08:44:38 2013 by Calc Open-Cased 090629
 Charted by: Depth in Feet scaled 1:240

0	GAMMA RAY (GAPI)	150	0	MEL1.5 (Ohm-m)	40
6	MELCAL (in)	16	0	MEL2.0 (Ohm-m)	40
0	MINMK	20			





0	GAMMA RAY (GAPI)	150
6	MELCAL (in)	16
0	MINMK	20

0	MEL1.5 (Ohm-m)	40
0	MEL2.0 (Ohm-m)	40

Calibration Report

Database File: 012046ddn.db
 Dataset Pathname: pass7.5.1
 Dataset Creation: Fri Nov 29 08:46:25 2013 by Calc Open-Cased 090629

MICRO Calibration Report

Serial Number:	MICRO4	
Tool Model:	PROBE	
Performed:	Sat Nov 23 07:48:00 2013	
Caliper Calibration:	Gain=2.947	Offset=-9.900
References	Low Cal	High Cal
Readings	8.600	14.000
	5.934	7.767

1.5" Calibration:	Gain=50.000	Offset=-2.200
References	Low Cal	High Cal
Readings	0.000	20.000
	0.009	1.541

2" Calibration:	Gain=55.000	Offset=-0.600
References	Low Cal	High Cal
Readings	0.000	20.000
	0.004	1.198

Gamma Ray Calibration Report

Serial Number:	GR5	
Tool Model:	OPEN	
Performed:	Mon Nov 25 00:29:00 2013	
Calibrator Value:	1.0	GAPI
Background Reading:	0.0	cps
Calibrator Reading:	1.0	cps
Sensitivity:	0.7800	GAPI/cps