



**COMPLETION
& PRODUCTION
SERVICES CO.**

**FRAC
FINDER
LOG**

Company PELICAN HILL OIL & GAS, INC.
Well T-NELSON #2-30
Field WILDCAT
County GOVE State KANSAS

Company PELICAN HILL OIL & GAS, INC.
Well T-NELSON #2-30
Field WILDCAT
County GOVE
State KANSAS

Location: API #: 15-063-22161.00.00
335' FNL & 2075' FEL
SE - NW - NW - NE/4
SEC 30 TWP 14S RGE 31W
Permanent Datum GROUND LEVEL Elevation 2778
Log Measured From KELLY BUSHING 10' A.G.L.
Drilling Measured From KELLY BUSHING
Other Services
CNL/CDL/DIL
MEL/SON
Elevation
K.B. 2788
D.F. 2786
G.L. 2778

Date	11-29-13		
Run Number	TWVO		
Depth Driller	4544		
Depth Logger	4554		
Bottom Logged Interval	4553		
Top Log Interval	3650		
Casing Driller	8 5/8 @ 256'		
Casing Logger	258'		
Bit Size	7.875		
Type Fluid in Hole	CHEMICAL MUD	CHLORIDES 3.000	
Density / Viscosity	9.3 / 55		
pH / Fluid Loss	10.5 / 6.4		
Source of Sample	FLOWLINE		
Rim @ Meas. Temp	0.95 @ 69F		
Rmf @ Meas. Temp	0.71 @ 69F		
Rmc @ Meas. Temp	1.14 @ 69F		
Source of Rmf / Rmc	MEASURED		
Rim @ BHT	0.50 @ 129F		
Time Circulation Stopped	2 HOURS		
Time Logger on Bottom			
Maximum Recorded Temperature	129F		
Equipment Number	860		
Location	HAYS, KS.		
Recorded By	IAN MABB		
Witnessed By	ROGER FISHER		

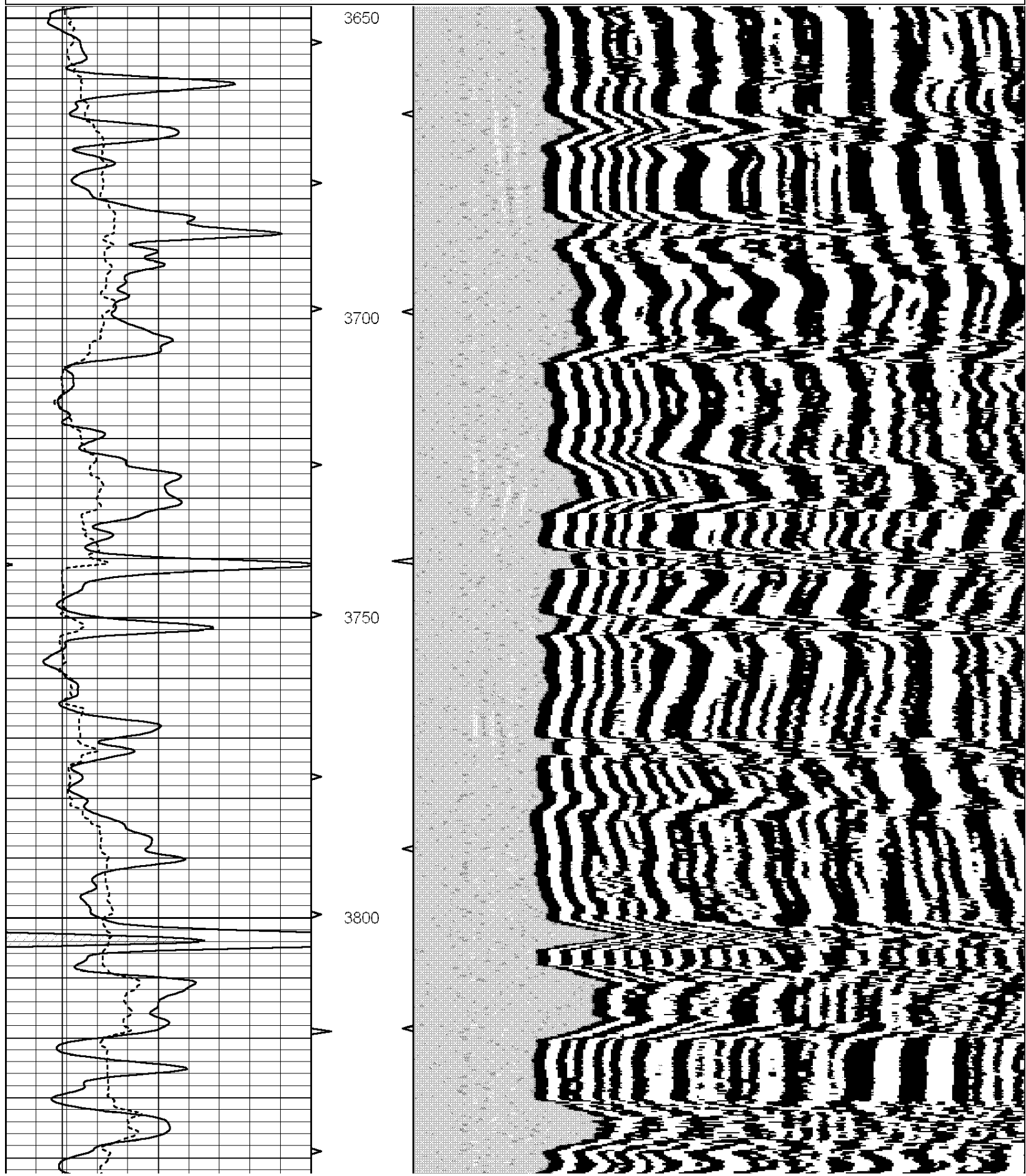
<<< Fold Here >>>

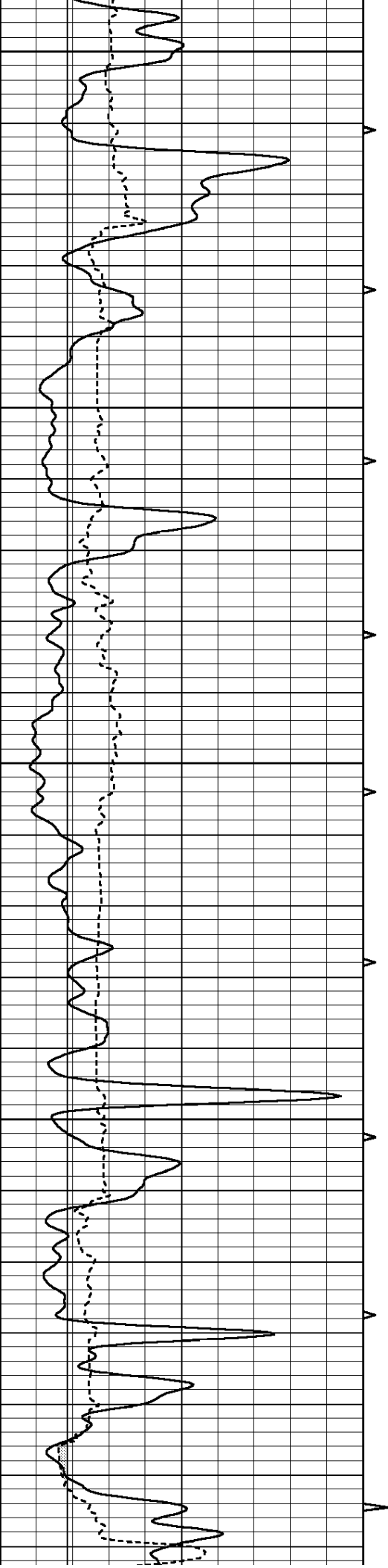
All interpretations are opinions based on inferences from electrical or other measurements and we cannot and do not guarantee the accuracy or correctness of any interpretation, and we shall not, except in the case of gross or willful negligence on our part, be liable or responsible for any loss, costs, damages, or expenses incurred or sustained by anyone resulting from any interpretation made by any of our officers, agents or employees. These interpretations are also subject to our general terms and conditions set out in our current Price Schedule.

Comments

NABORS COMPLETION & PRODUCTION SERVICES
785-628-6395
THANK YOU FOR YOUR BUSINESS
DIRECTIONS: OAKLEY, KS. - 20 MILES SOUTH TO JAYHAWK RD. - 3 MILES EAST TO GOVE 14
AFTER THE SECOND CATTLE GUARD WEST INTO

0	GR (GAPI)	150	AVTX	200	WVF1	1200
6	BOREID (in)	16	10 (ft3)	0		
6	CALIPER (in)	16	BVTX			
			0 (ft3)	10		





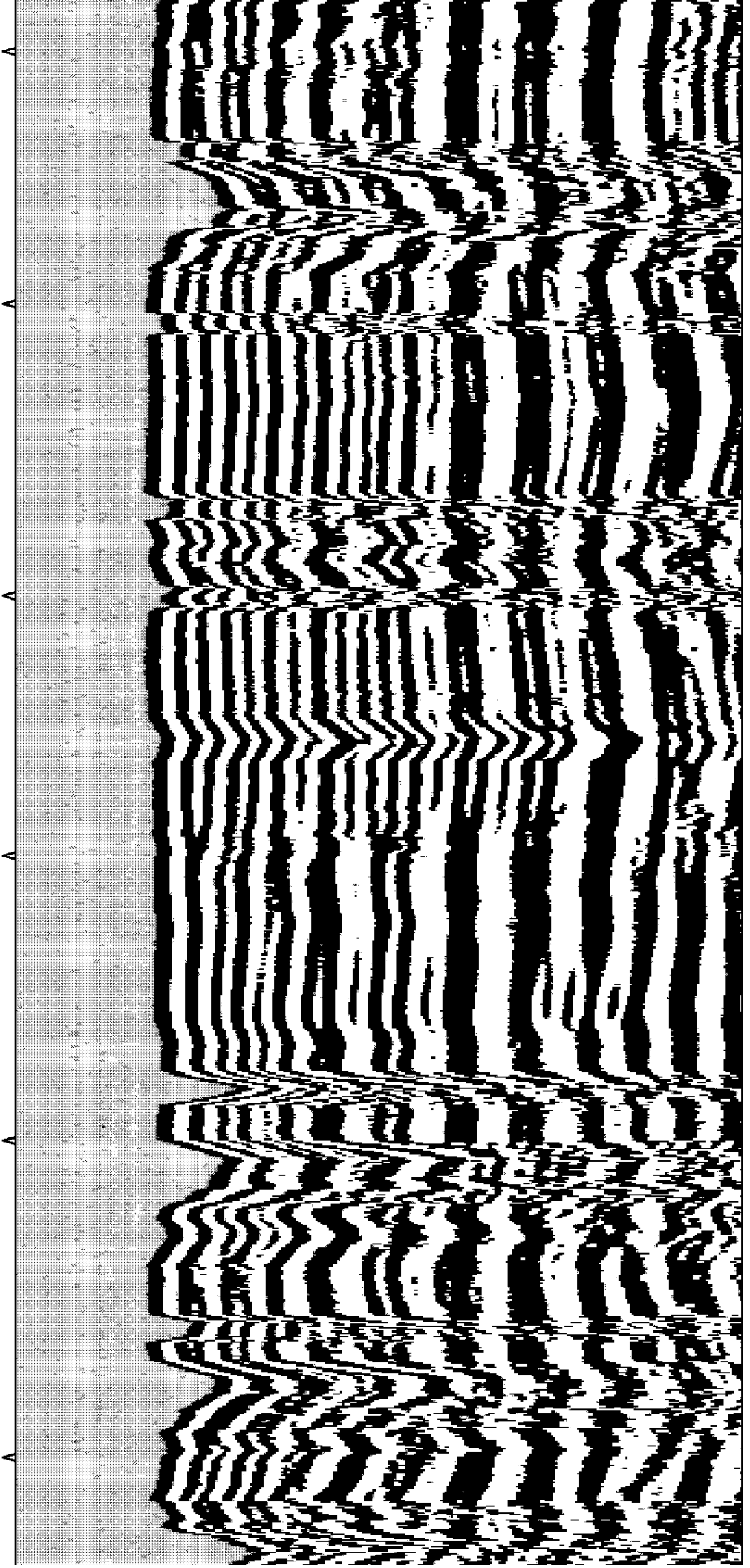
3850

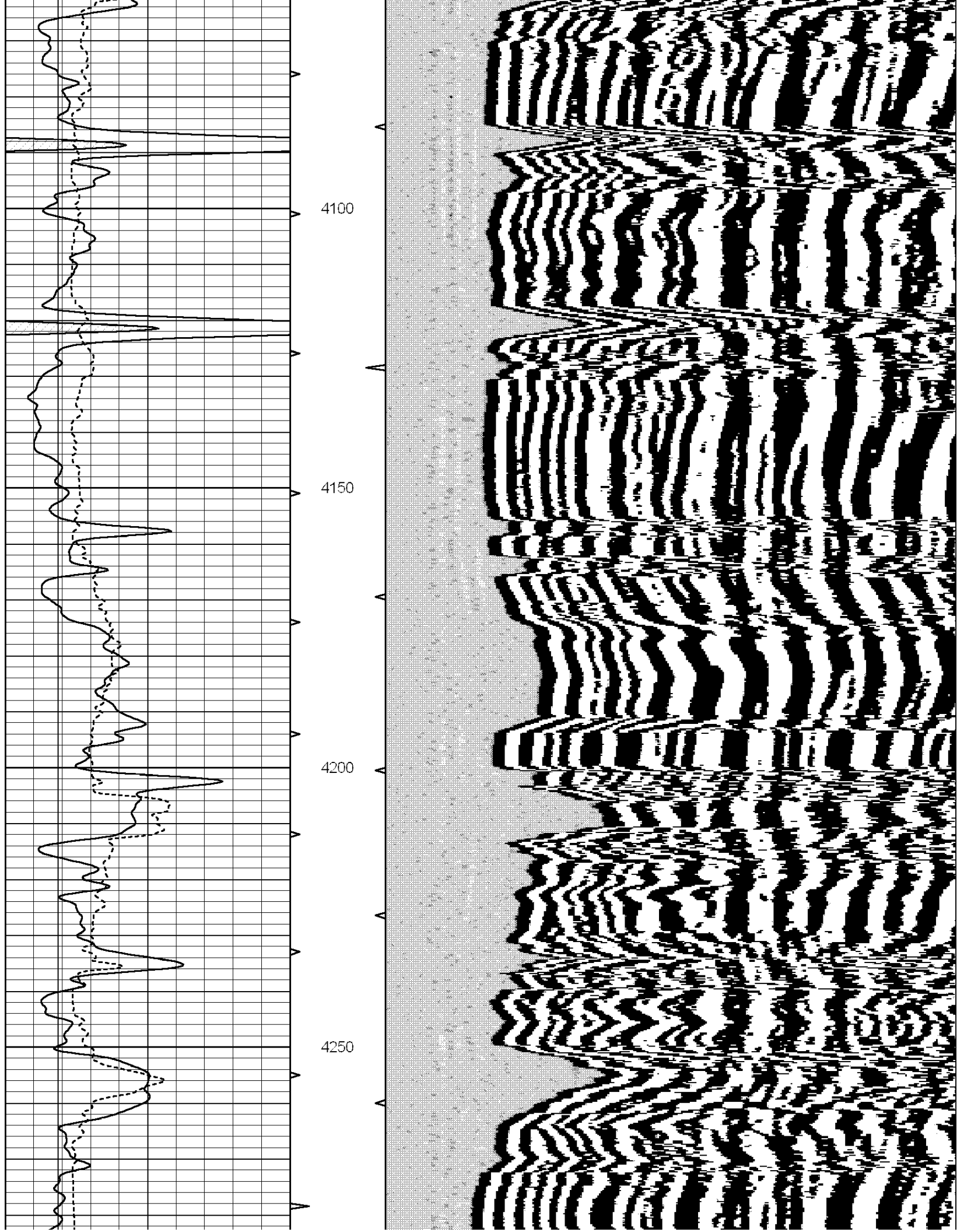
3900

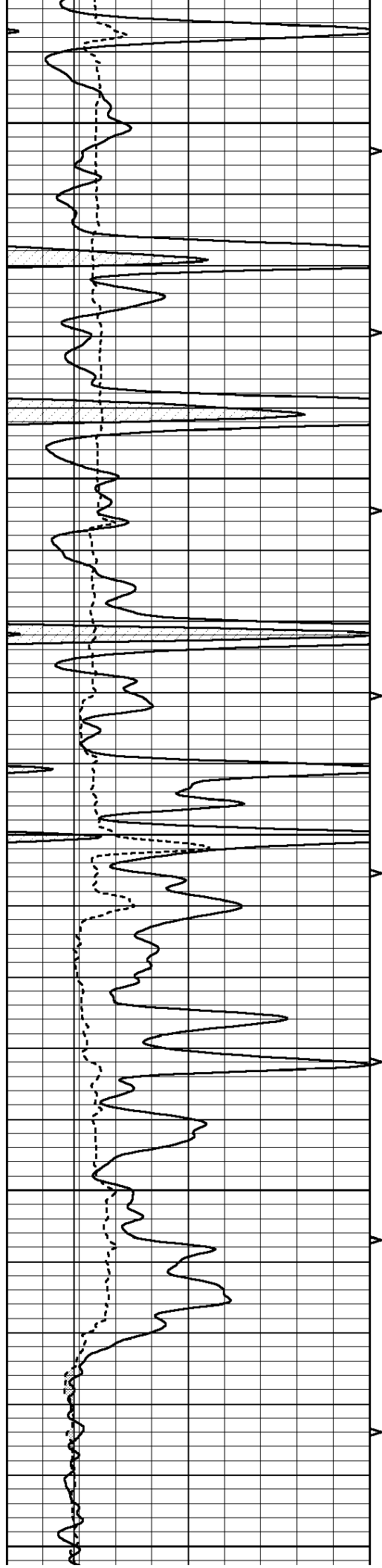
3950

4000

4050







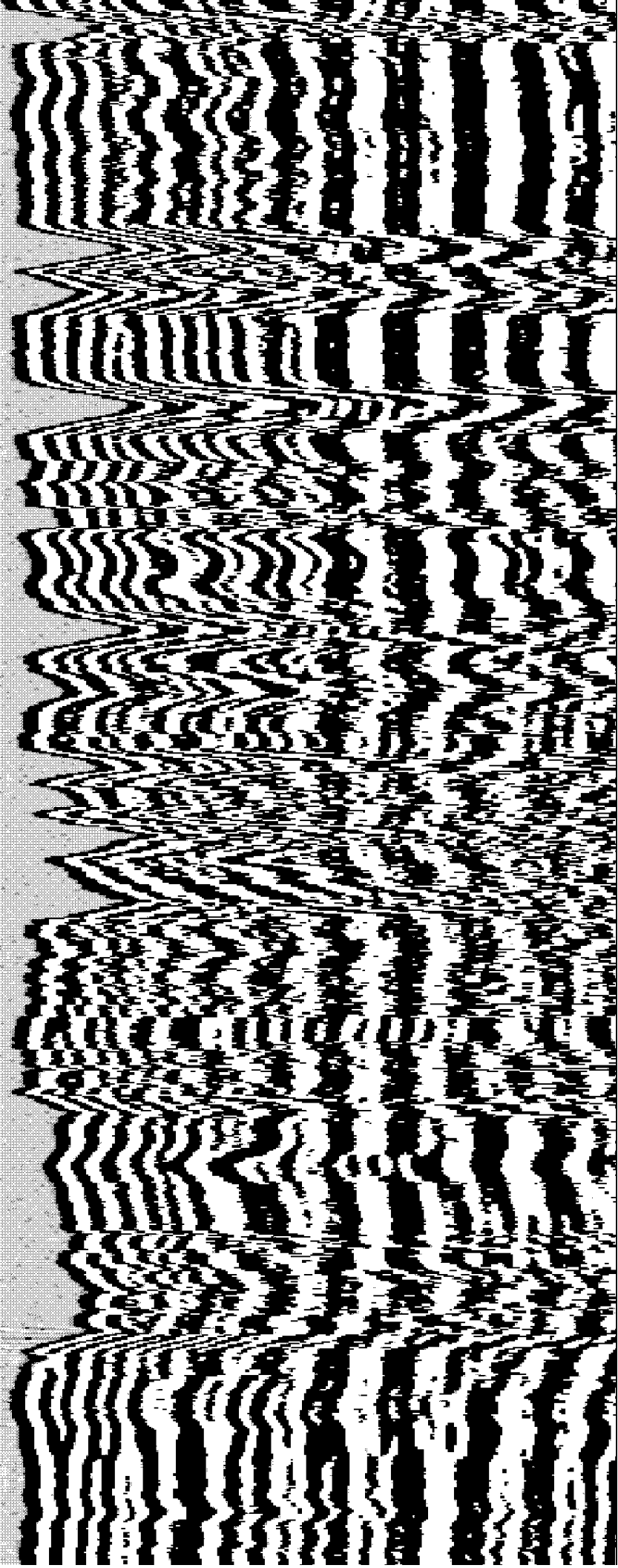
4300

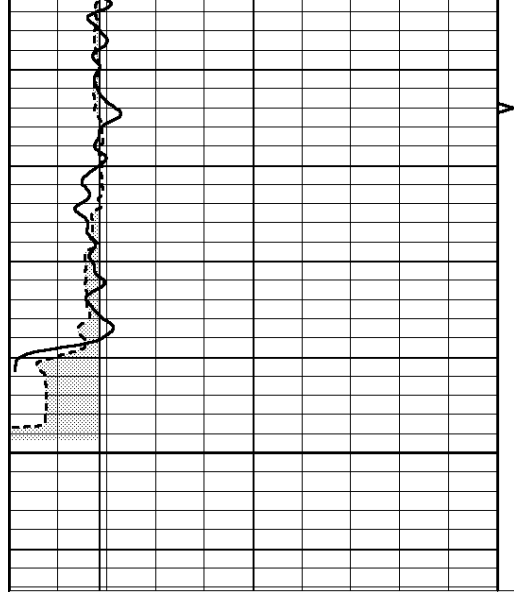
4350

4400

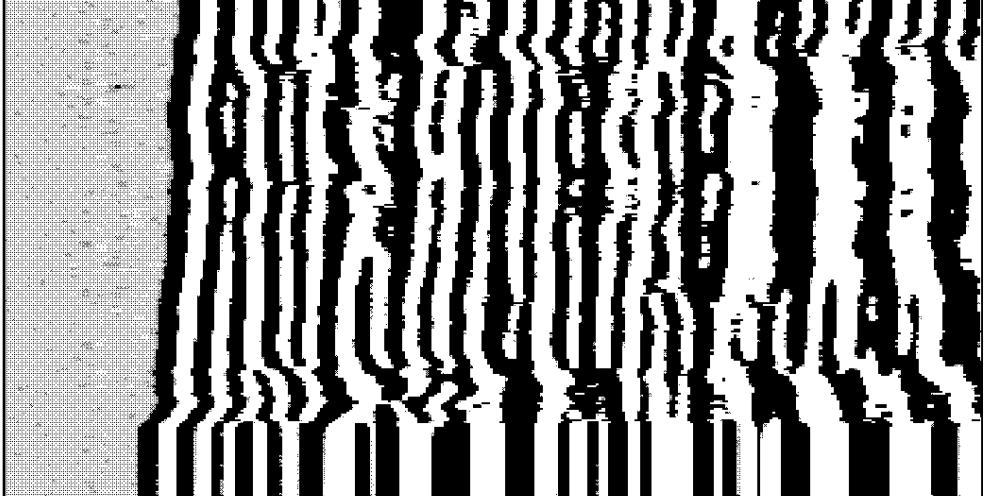
4450

4500





4550



0	GR (GAPI)	150	AVTX	200	WVF1	1200
6	BOREID (in)	16	10 (ft3)	0		
6	CALIPER (in)	16	BVTX			
			0 (ft3)	10		