



**COMPLETION
& PRODUCTION
SERVICES CO.**

**COMPENSATED
DENSITY/ NEUTRON
LOG**

Company PELICAN HILL OIL & GAS , INC.
Well T-NELSON #2-30
Field WILDCAT
County GOVE State KANSAS

Company PELICAN HILL OIL & GAS , INC.
Well T-NELSON #2-30
Field WILDCAT
County GOVE
State KANSAS

Location: API # : 15-063-22161.00.00
335' FNL & 2075' FEL
SE - NW - NW - NE/4
SEC 30 TWP 14S RGE 31W
Permanent Datum GROUND LEVEL Elevation 2778
Log Measured From KELLY BUSHING 10' A.G.L.
Drilling Measured From KELLY BUSHING
Other Services
DIL/MEL
SON/FRAC
Elevation
K.B. 2788
D.F. 2786
G.L. 2778

Date	11-29-13		
Run Number	ONE		
Depth Driller	4544		
Depth Logger	4554		
Bottom Logged Interval	4530		
Top Log Interval	3650		
Casing Driller	8 5/8 @ 256'		
Casing Logger	258'		
Bit Size	7.875		
Type Fluid in Hole	CHEMICAL MUD	CHLORIDES 3.000	
Density / Viscosity	9.3 / 55		
pH / Fluid Loss	10.5 / 6.4		
Source of Sample	FLOWLINE		
Rim @ Meas. Temp	0.95 @ 69F		
Rmf @ Meas. Temp	0.71 @ 69F		
Rmc @ Meas. Temp	1.14 @ 69F		
Source of Rmf / Rmc	MEASURED		
Rim @ BHT	0.50 @ 129F		
Time Circulation Stopped	2 HOURS		
Time Logger on Bottom			
Maximum Recorded Temperature	129F		
Equipment Number	860		
Location	HAYS, KS.		
Recorded By	IAN MABB		
Witnessed By	ROGER FISHER		

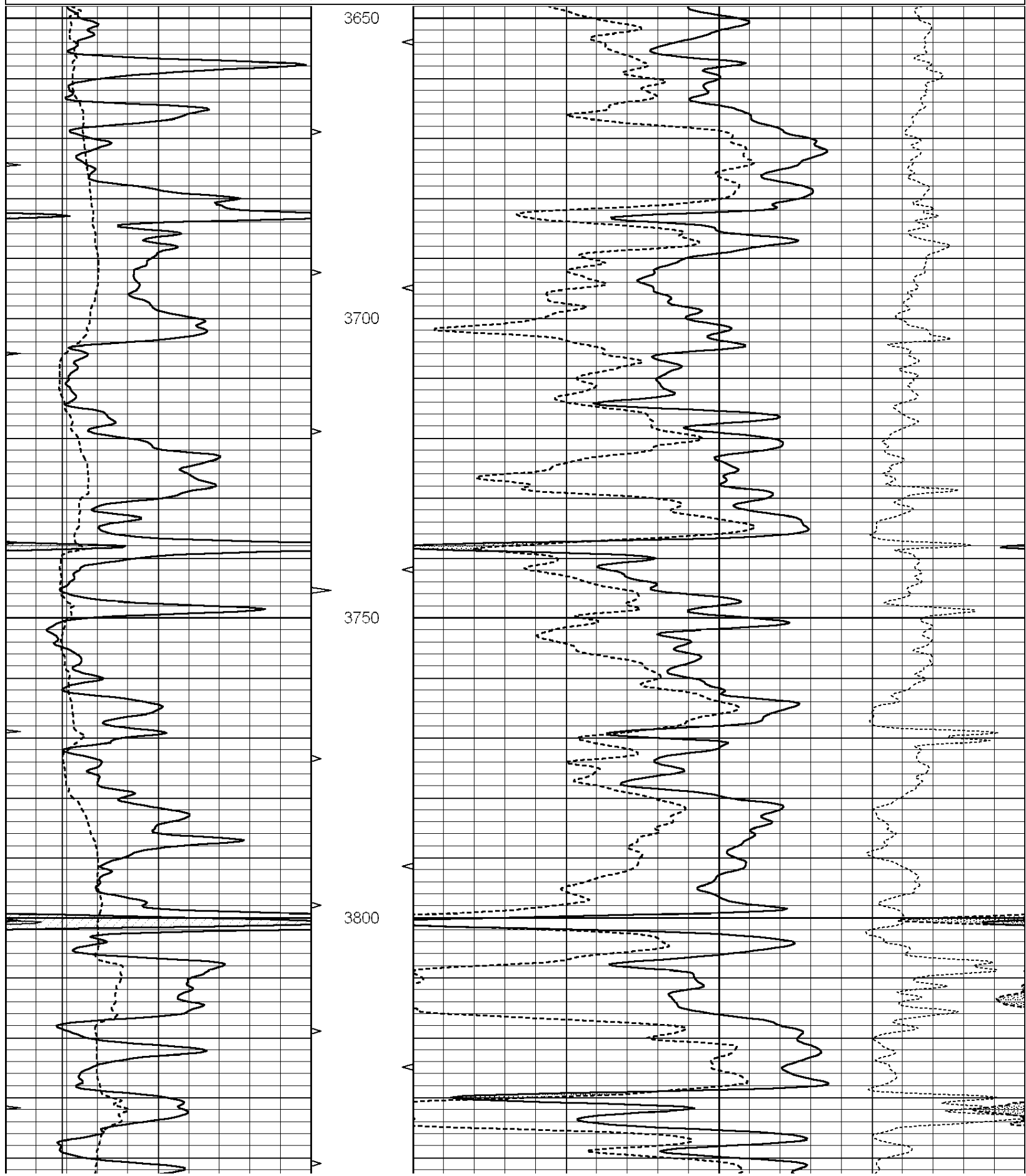
<<< Fold Here >>>

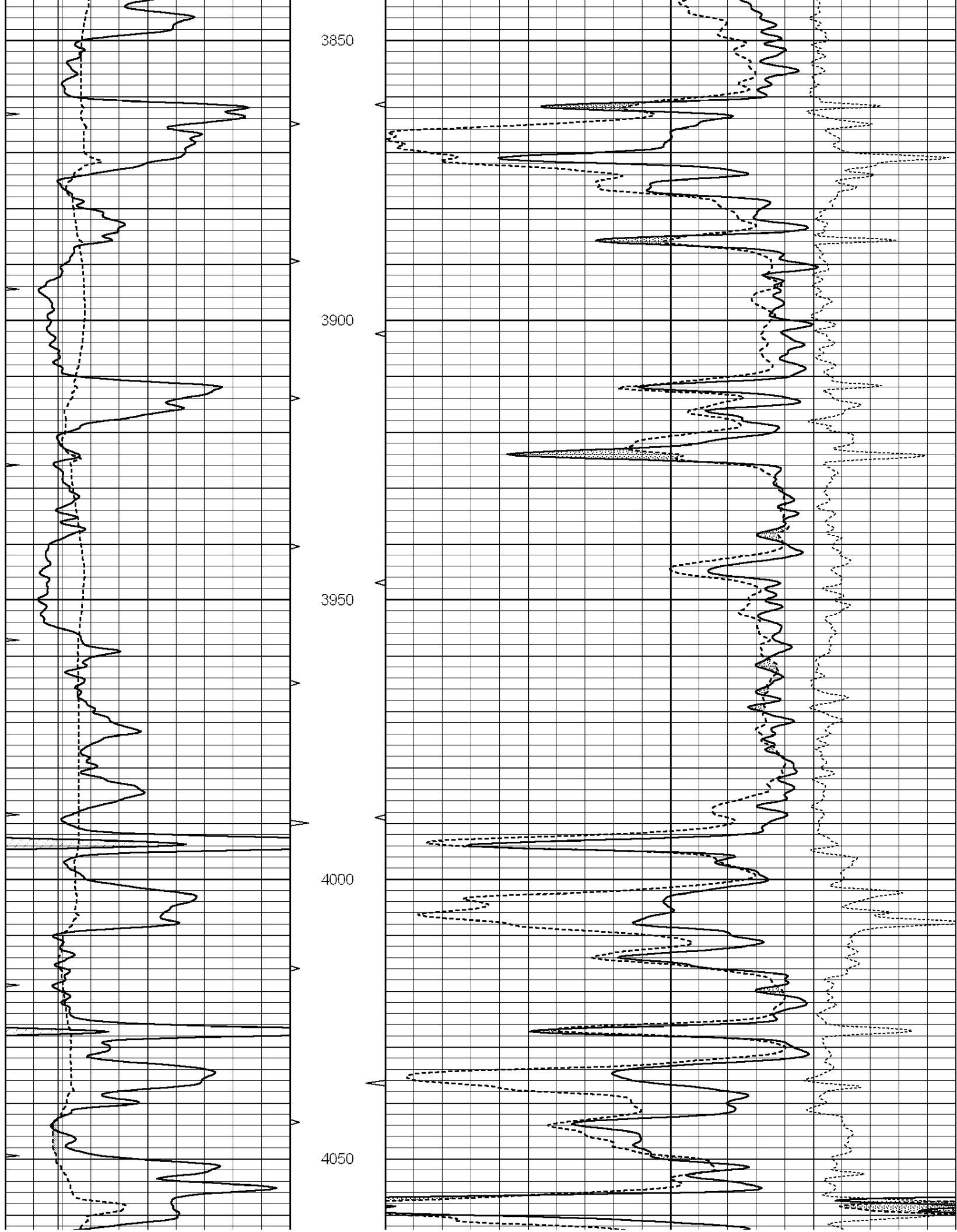
All interpretations are opinions based on inferences from electrical or other measurements and we cannot and do not guarantee the accuracy or correctness of any interpretation, and we shall not, except in the case of gross or willful negligence on our part, be liable or responsible for any loss, costs, damages, or expenses incurred or sustained by anyone resulting from any interpretation made by any of our officers, agents or employees. These interpretations are also subject to our general terms and conditions set out in our current Price Schedule.

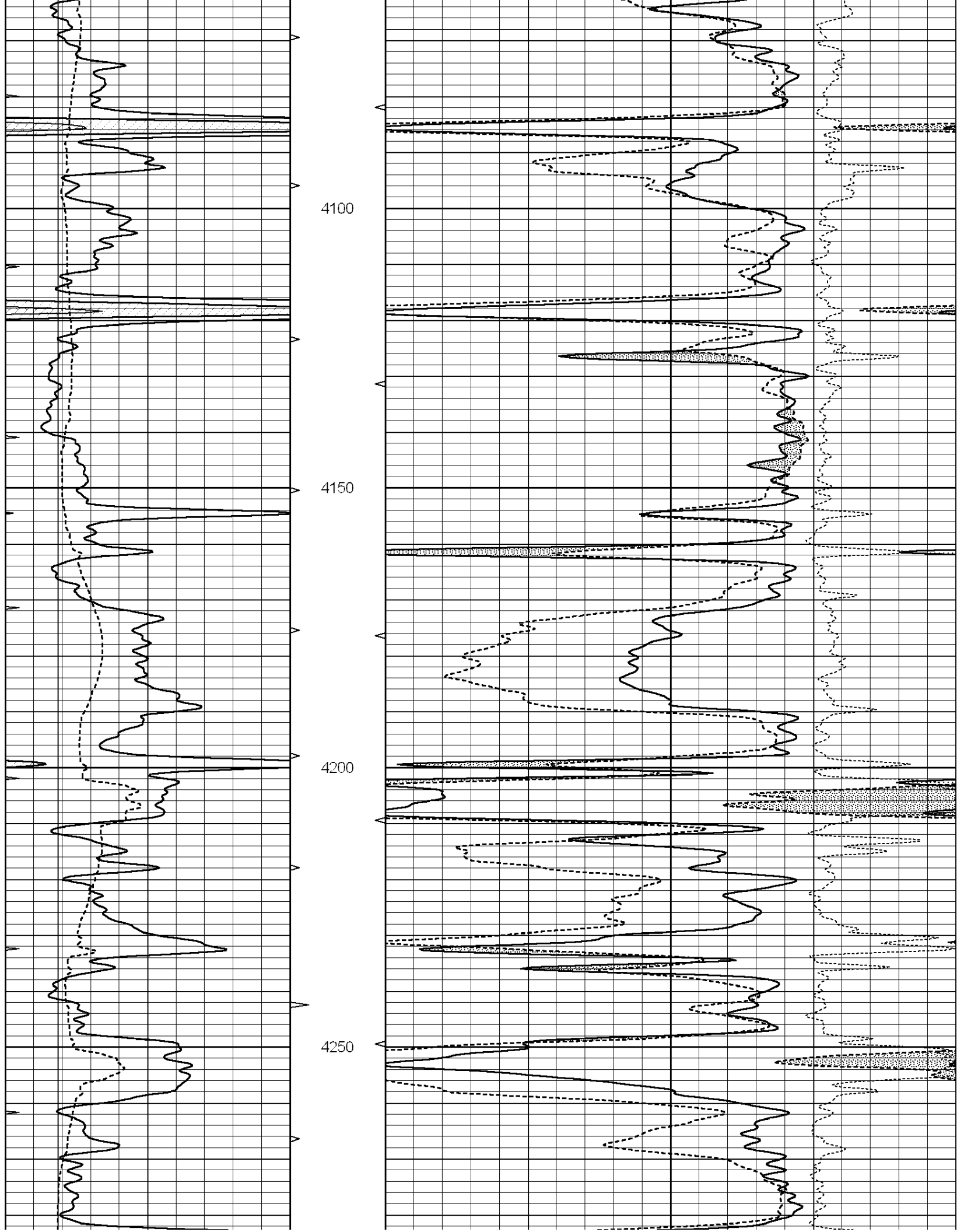
Comments

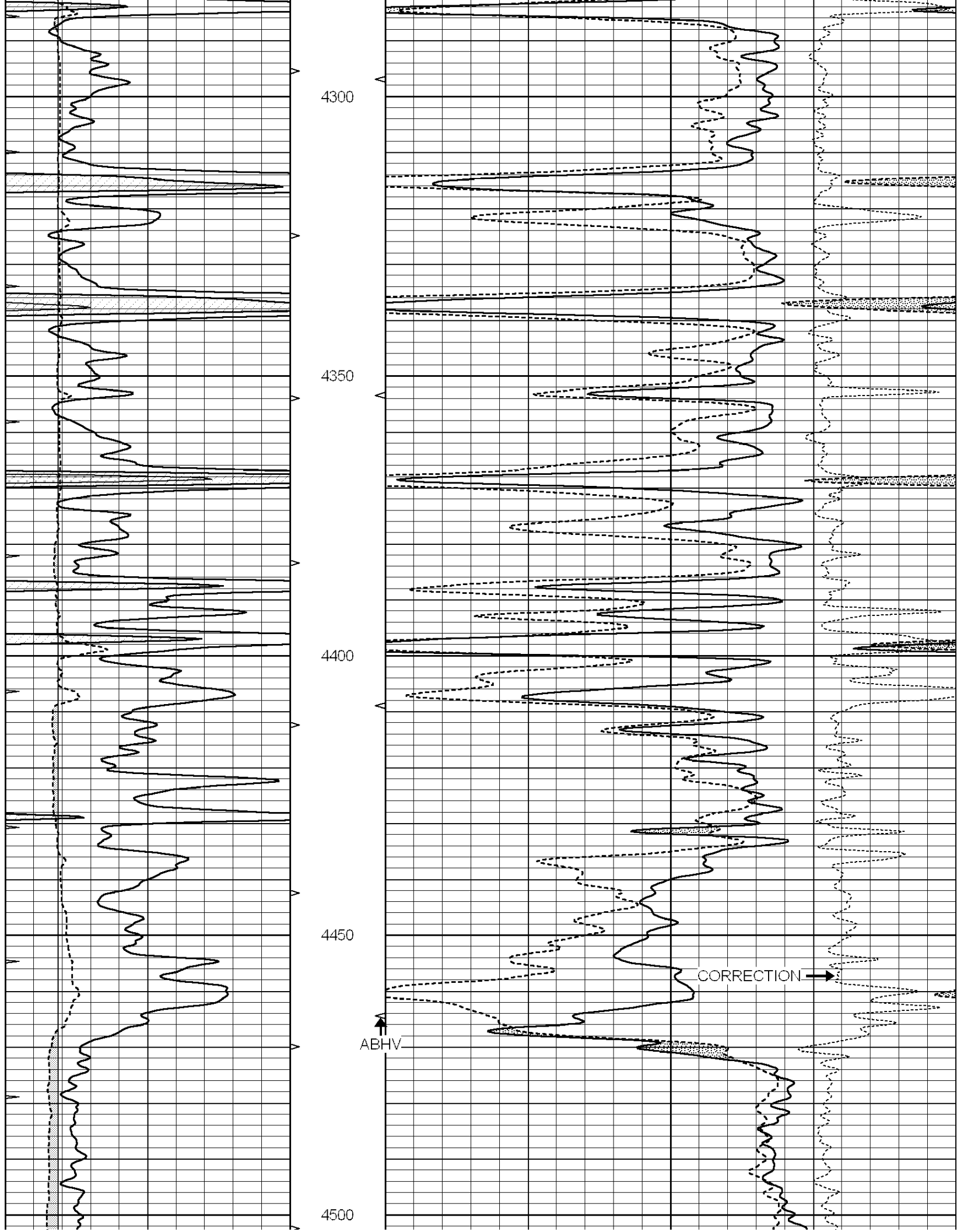
NABORS COMPLETION & PRODUCTION SERVICES
785-628-6395
THANK YOU FOR YOUR BUSINESS
DIRECTIONS: OAKLEY, KS. - 20 MILES SOUTH TO JAYHAWK RD. - 3 MILES EAST TO GOVE 14
AFTER THE SECOND CATTLE GUARD WEST INTO

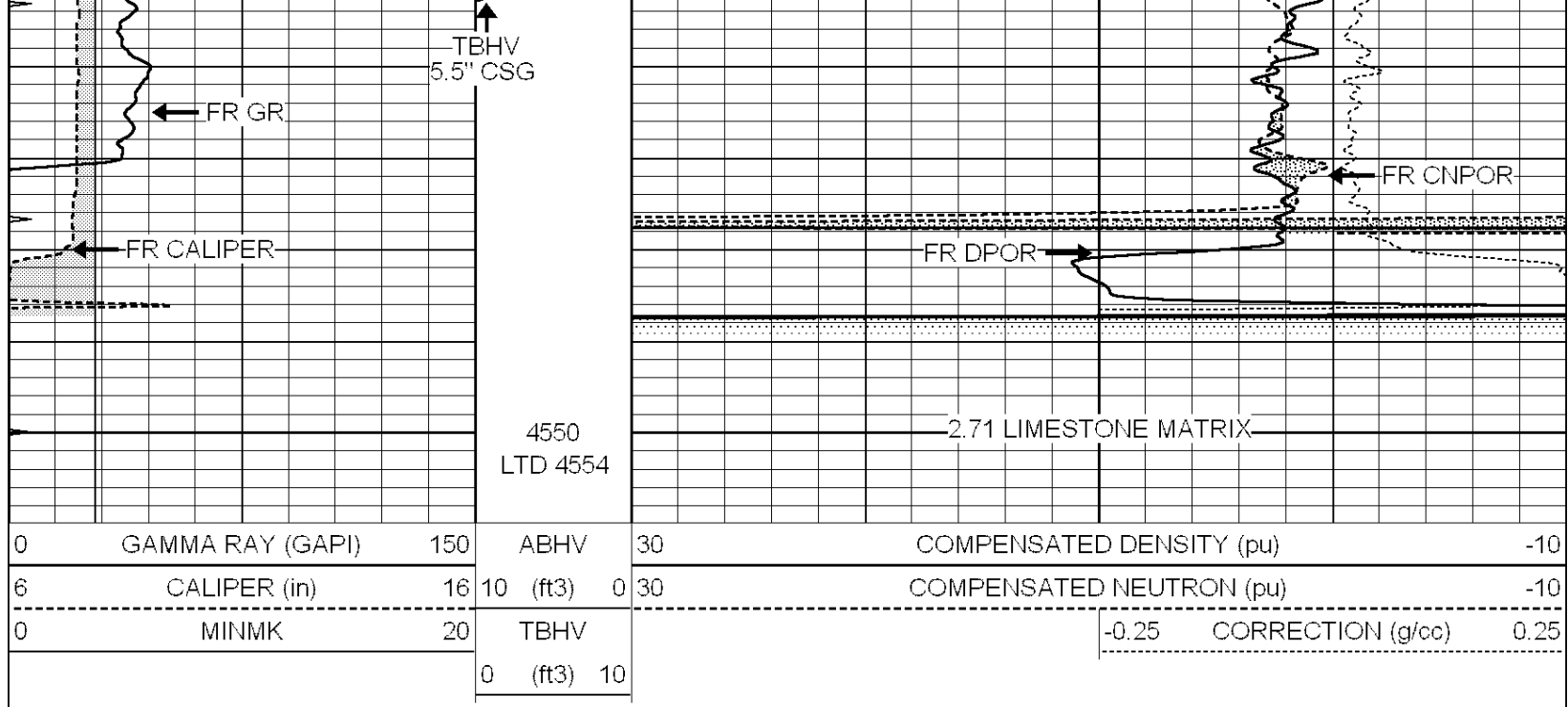
0	GAMMA RAY (GAPI)	150	ABHV	30	COMPENSATED DENSITY (pu)	-10
6	CALIPER (in)	16	10 (ft3)	0 30	COMPENSATED NEUTRON (pu)	-10
0	MINMK	20	TBHV		-0.25 CORRECTION (g/cc)	0.25
			0 (ft3)	10		







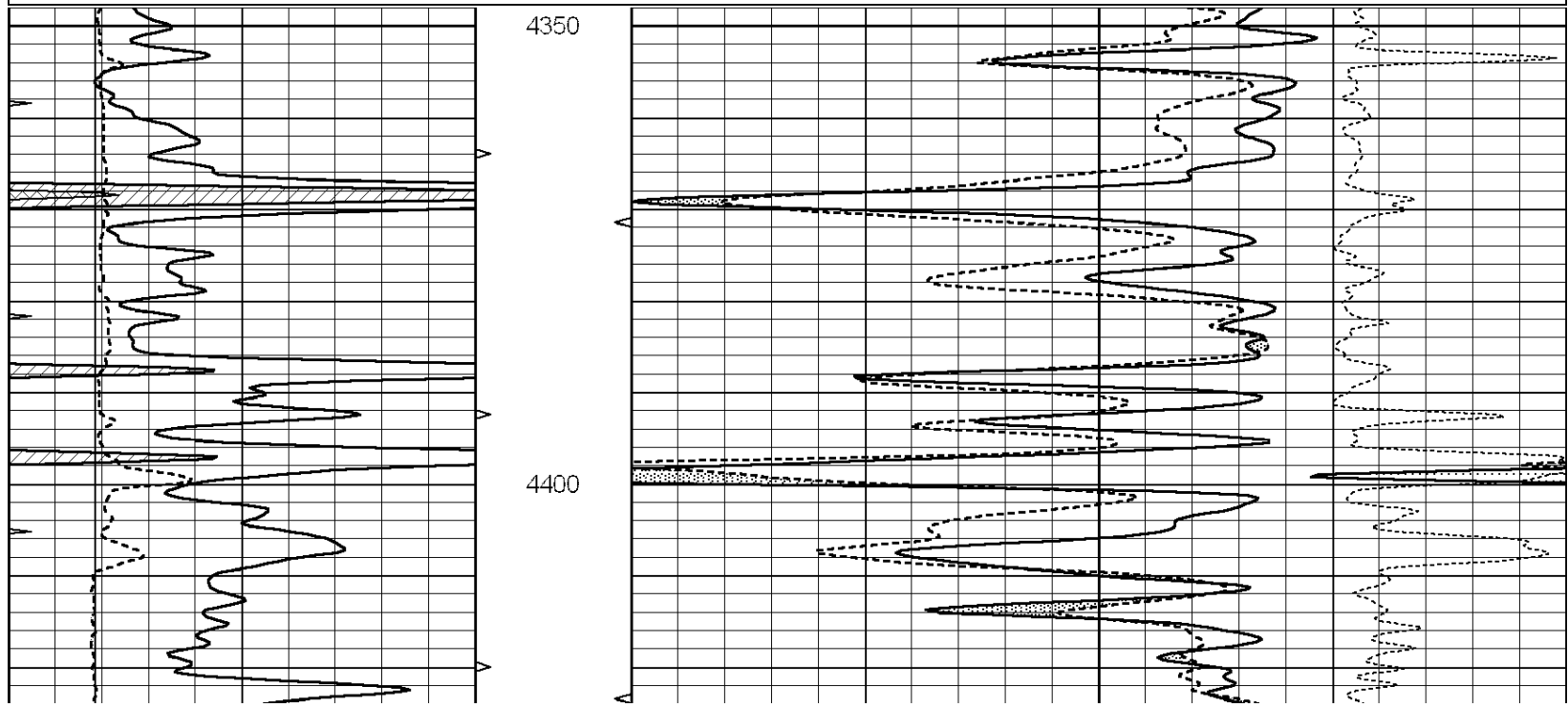


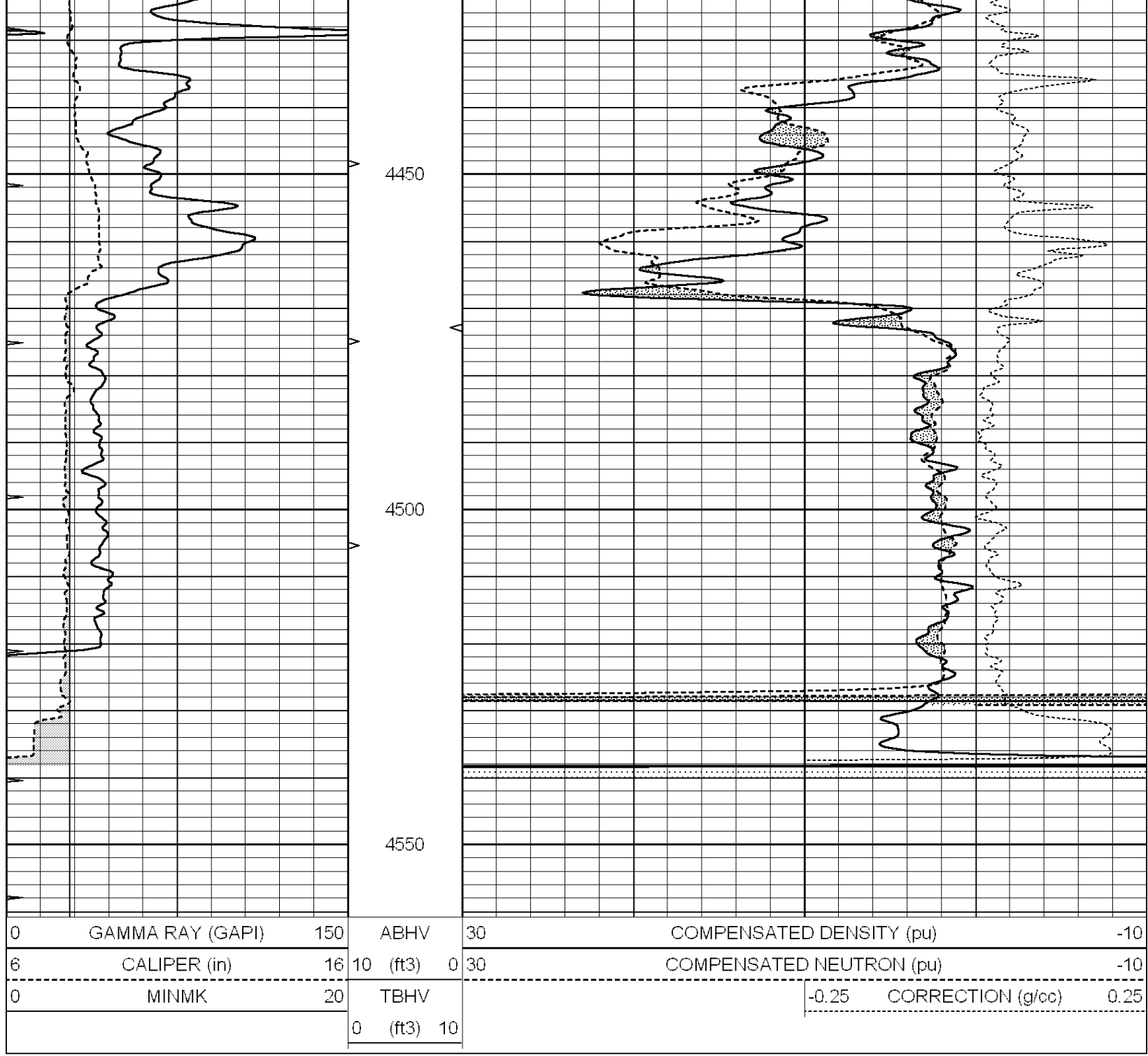


REPEAT SECTION

Database File: 012046ddn.db
 Dataset Pathname: pass2.5
 Presentation Format: _den_neu
 Dataset Creation: Fri Nov 29 06:14:49 2013 by Calc Open-Cased 090629
 Charted by: Depth in Feet scaled 1:240

0	GAMMA RAY (GAPI)	150	ABHV	30	COMPENSATED DENSITY (pu)	-10
6	CALIPER (in)	16	10 (ft3)	0 30	COMPENSATED NEUTRON (pu)	-10
0	MINMK	20	TBHV		-0.25 CORRECTION (g/cc)	0.25
			0 (ft3)	10		





Calibration Report

Database File: 012046ddn.db
 Dataset Pathname: pass4.2
 Dataset Creation: Fri Nov 29 06:14:10 2013 by Calc Open-Cased 090629

Dual Induction Calibration Report

Serial-Model: DIL3-GEAR
 Performed: Sun Nov 24 23:25:37 2013

Loop:	Readings			References			Results	
	Air	Loop		Air	Loop		m	b
Deep	0.011	0.656	V	0.000	400.000	mmho/m	500.000	5.000
Medium	0.013	0.740	V	0.000	462.500	mmho/m	580.000	5.000
Internal:	Zero	Cal		Zero	Cal		m	b

Deep	0.002	0.645	V	0.000	400.000	mmho/m	560.000	-1.071
Medium	0.007	0.740	V	0.000	462.500	mmho/m	540.000	-4.000

Compensated Density Calibration Report

Serial-Model: GEAR1-GEARHART
Source / Verifier: 147 / 147
Master Calibration Performed: Sun Nov 24 21:22:19 2013

Master Calibration

	Density		Far Detector	Near Detector	
Magnesium	1.710	g/cc	1205.77	610.74	cps
Aluminum	2.580	g/cc	271.21	419.72	cps
Spine Angle = 75.89			Density/Spine Ratio = 0.566		
	Size		Reading		
Small Ring	8.20	in	4.83	V	
Large Ring	14.00	in	7.01	V	

Compensated Neutron Calibration Report

Serial Number: 080620
Tool Model: Probe

PRE-SURVEY VERIFICATION

Detector	Readings	Measured	Target
Short Space	cps		
Long Space	cps	pu	pu

POST-SURVEY VERIFICATION

Detector	Readings	Measured	Target
Short Space	cps		
Long Space	cps	pu	pu

Gamma Ray Calibration Report

Serial Number: 7
Tool Model: Probe1
Performed: Tue Apr 16 01:45:59 2013

Calibrator Value: 1.0 GAPI

Background Reading: 0.0 cps
Calibrator Reading: 1.0 cps

Sensitivity: 0.4000 GAPI/cps