



Pioneer Energy Services

Microresistivity Log

API No.	15-163-24,141-00-00		
Company	The Bill Bowman Oil Company		
Well	Hrabe 'A' No. 5		
Field	Westhusin		
County	Rooks	State	Kansas
Location	4134' FSL & 2172' FEL		
Sec: 1	Twp: 9S	Rge: 17W	Other Services CNL/CDL DIL
Permanent Datum	Ground Level	Elevation 1944	Elevation
Log Measured From	Kelly Bushing	5 Ft. Above Perm. Datum	K.B. 1949
Drilling Measured From	Kelly Bushing		D.F. 1944

Date	10/12/13
Run Number	Two
Depth Driller	3478
Depth Logger	3480
Bottom Logged Interval	3479
Top Log Interval	2800
Casing Driller	8.625 @ 222
Casing Logger	218
Bit Size	7.875
Type Fluid in Hole	Chemical
Salinity, ppm Cl	3,000
Density / Viscosity	9.1 56
pH / Fluid Loss	9.5 8.0
Source of Sample	Flowline
Rm @ Meas. Temp	.50 @ 62
Rmf @ Meas. Temp	.38 @ 62
Rmc @ Meas. Temp	.68 @ 62
Source of Rmf / Rmc	Charts
Rm @ BHT	.28 @ 111
Operating Rig Time	3 1/2 Hours
Max Rec. Temp. F	111
Equipment Number	108
Location	Hays
Recorded By	J. Henrickson
Witnessed By	Ed Glassman

<<< Fold Here >>>

All interpretations are opinions based on inferences from electrical or other measurements and we cannot and do not guarantee the accuracy or correctness of any interpretation, and we shall not, except in the case of gross or willful negligence on our part, be liable or responsible for any loss, costs, damages, or expenses incurred or sustained by anyone resulting from any interpretation made by any of our officers, agents or employees. These interpretations are also subject to our general terms and conditions set out in our current Price Schedule.

Comments

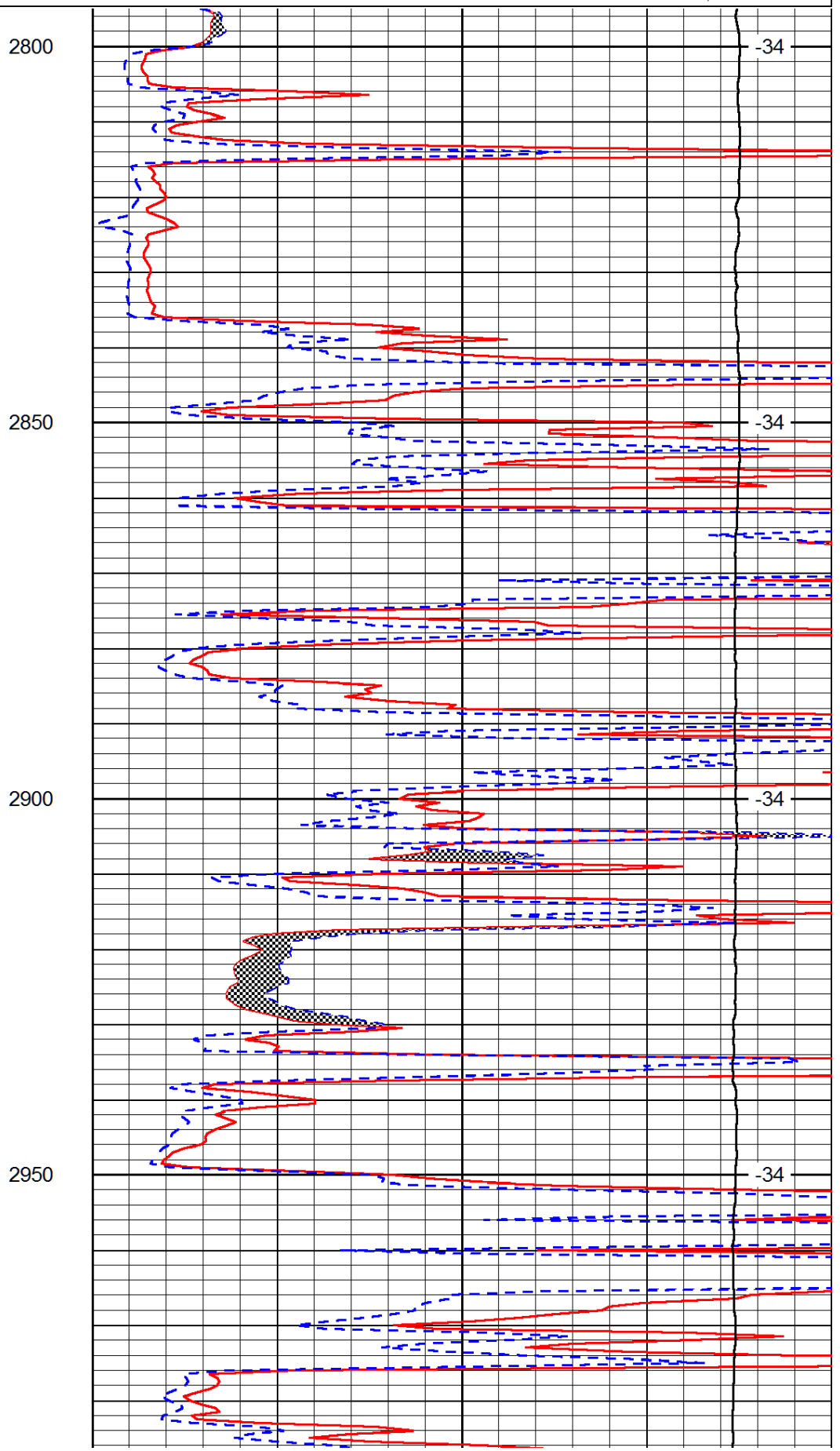
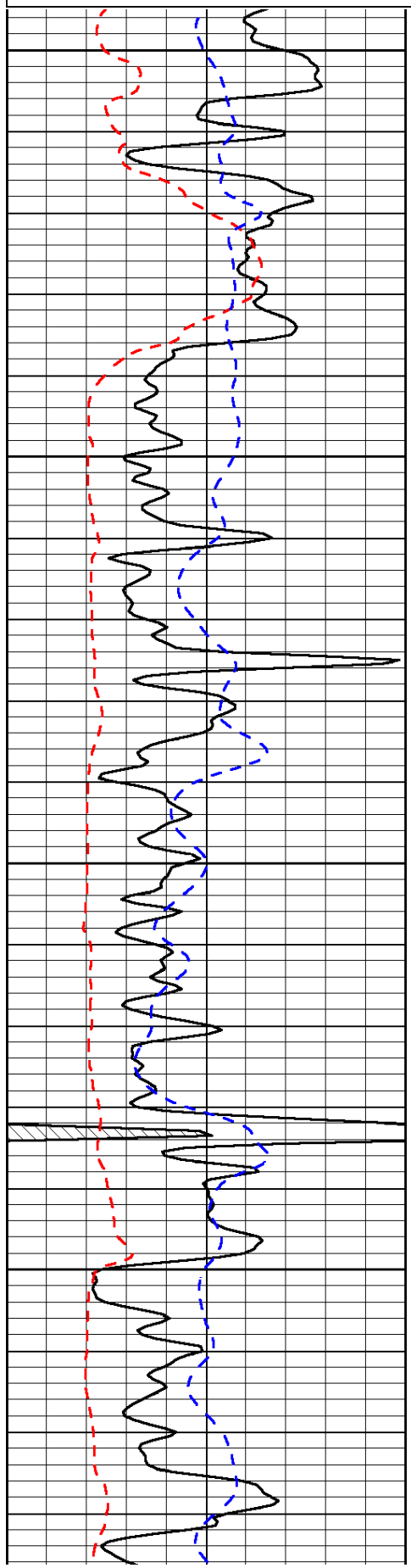
Thank you for using Log-Tech, Inc.
(785) 625-3858

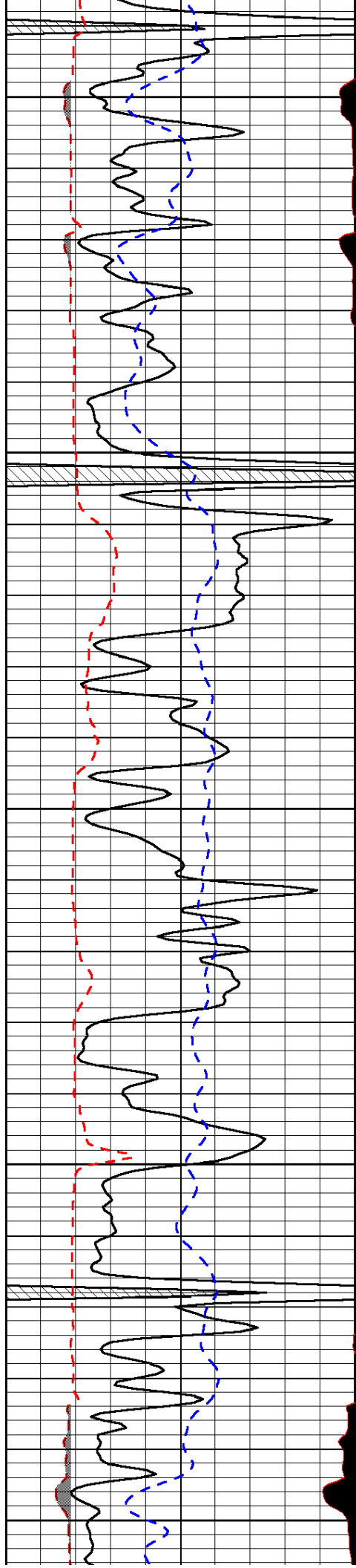
Plainville Kansas
North to S Rd, 7 1/2 East, South Into

Database File: bowman_hrabe_a_5hd.db
 Dataset Pathname: DIL/bowstk
 Presentation Format: micro
 Dataset Creation: Sat Oct 12 23:19:54 2013
 Charted by: Depth in Feet scaled 1:240

0	Gamma Ray (GAPI)	150
6	MCAL (in)	16
2.875	Mud Cake (in)	7.875
-200	SP (mV)	0

0	Micro Inverse 1 X 1 (Ohm-m)	40
0	Micro Normal 2" (Ohm-m)	40
10000	Line Weight (lb)	0
		LSPD (ft/min)





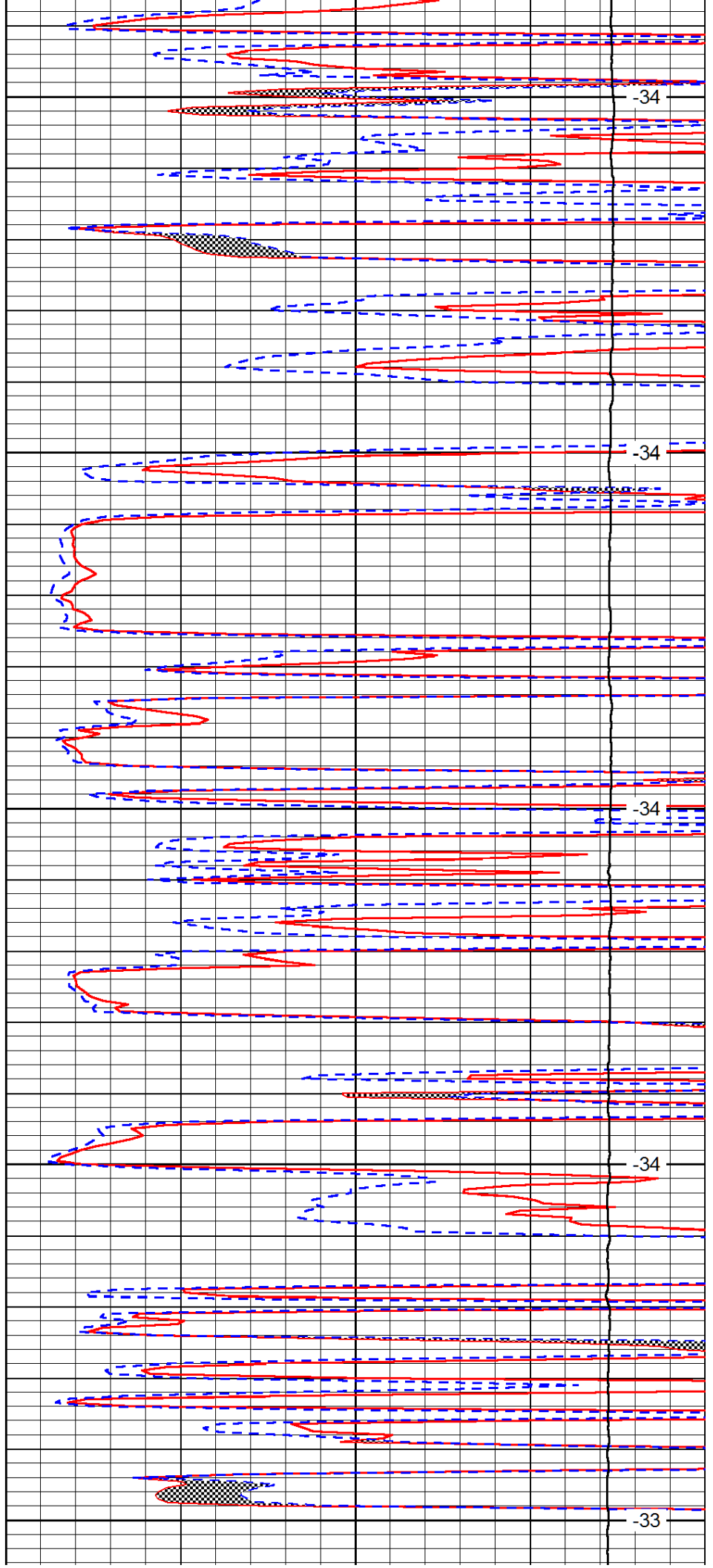
3000

3050

3100

3150

3200



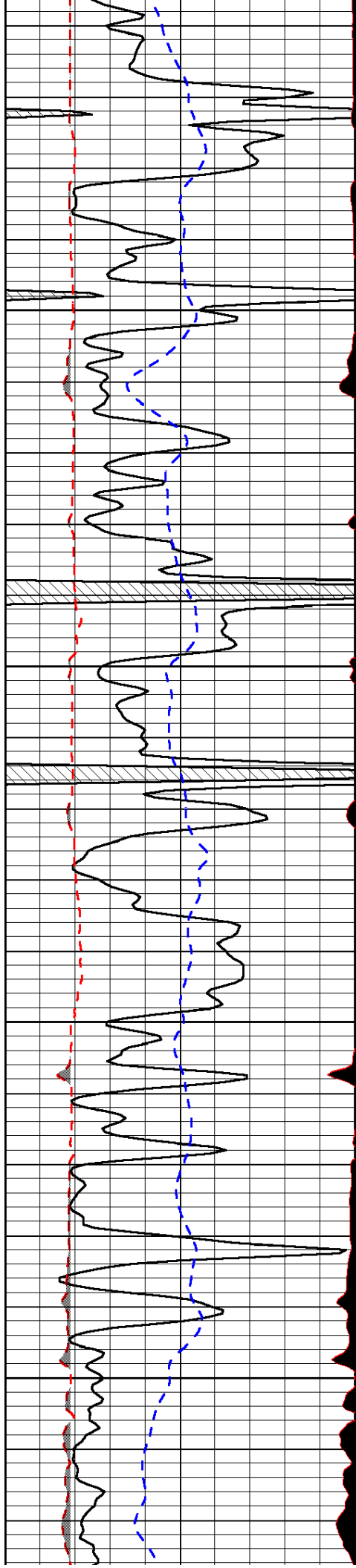
-34

-34

-34

-34

-33

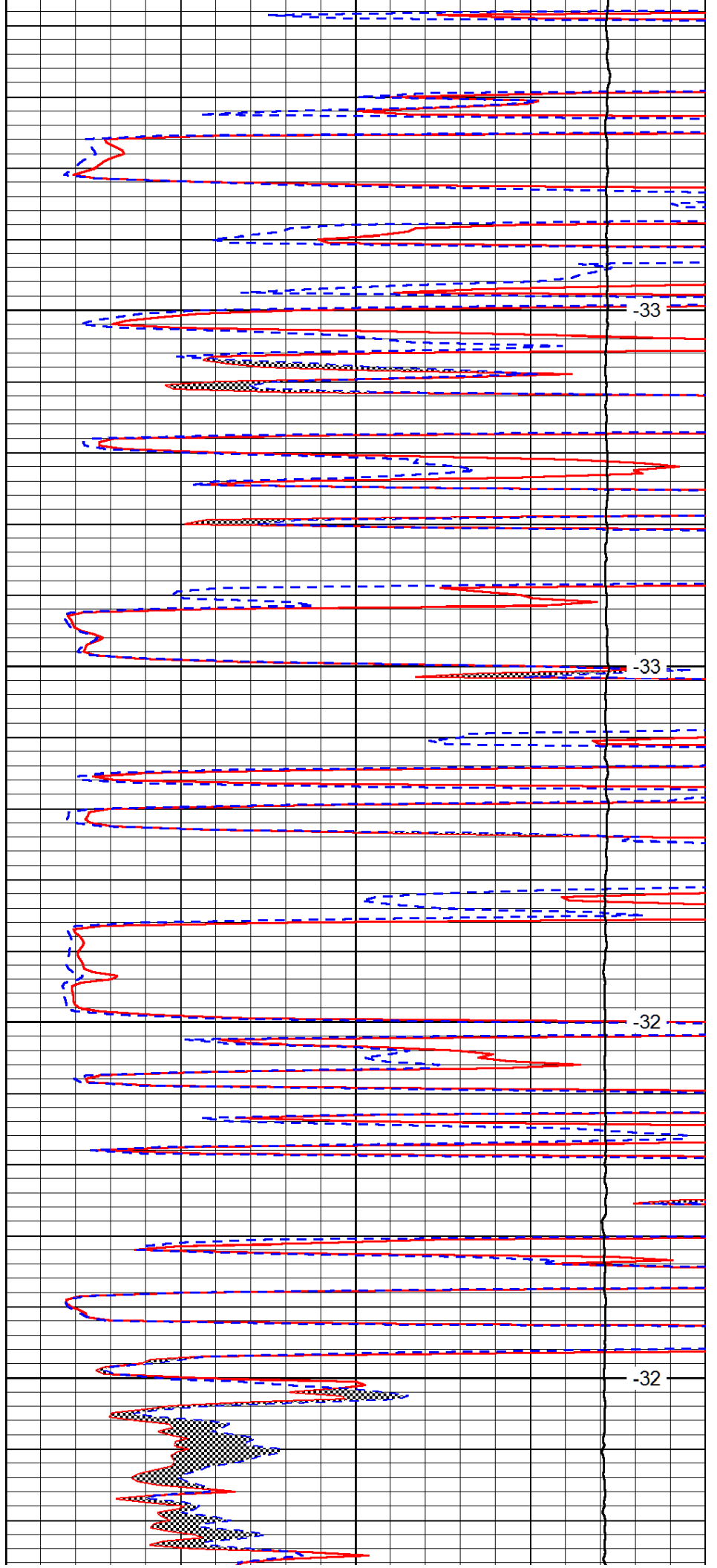


3250

3300

3350

3400

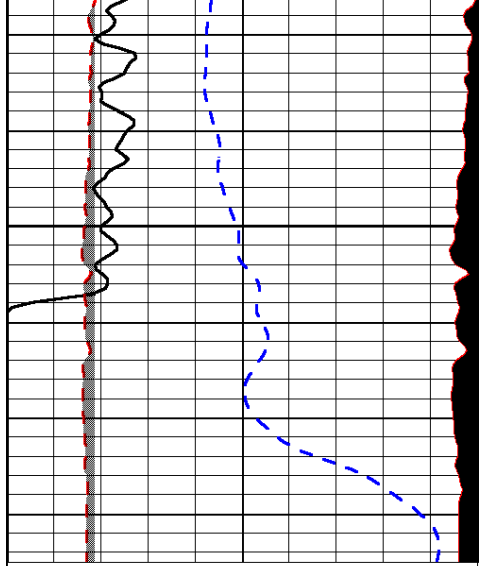


-33

-33

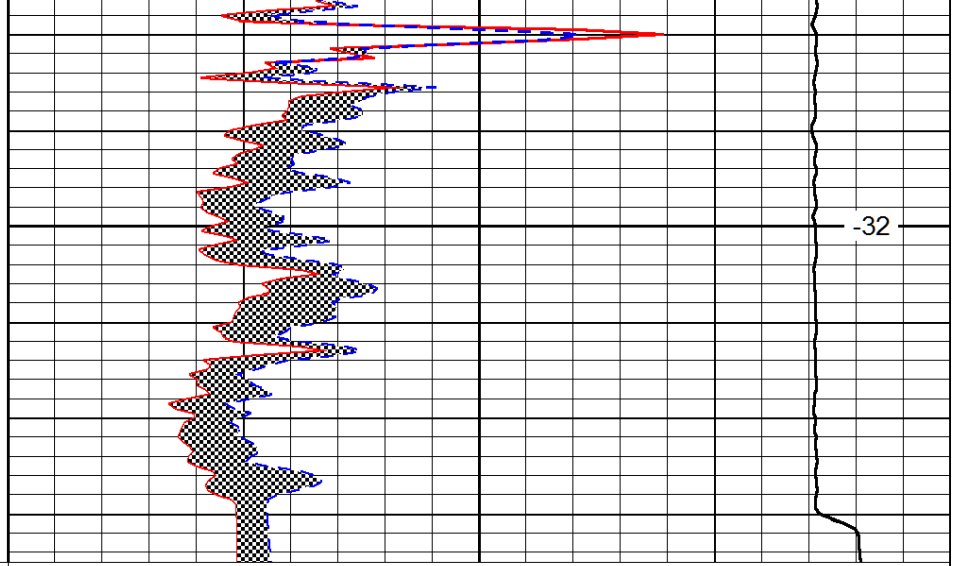
-32

-32



0	Gamma Ray (GAPI)	150
6	MCAL (in)	16
2.875	Mud Cake (in)	7.875
-200	SP (mV)	0

3450



0	Micro Inverse 1 X 1 (Ohm-m)	40
0	Micro Normal 2" (Ohm-m)	40
10000	Line Weight (lb)	0

LSPD
(ft/min)

-32