



Pioneer Energy Services

Sonic Cement
Bond Log

15-101-20100-00-01

Company Larson Engineering Inc.

Well Hineman P. No. 1 SWD

Field

County Lane

State Kansas

Location

1955' FSL & 650' FWL

Other Services
Mast Trailer

Sec: 20 Twp: 19 S Rge: 28 W

Elevation

Permanent Datum Ground Level Elevation 2786

Log Measured From Kelly Bushing 5 Ft. Above Perm. Datum

Drilling Measured From Kelly Bushing K.B. 2791
D.F. G.L. 2786

Run Number One

Date Survey 06/03/2013

Date Cementing 05/2013

Type Cementing Operation Primary

Depth Driller 4706

Depth Logger 2118

Logged Interval 2117 to 0

Casing Driller 4.5 @ TD @

Float Collar -- D.V. Tool // // //

Squeeze Depth // // //

Amount & Type Cement // // //

Amount & Type Admix // // //

Type Fluid In Hole Water

Fluid Level Full

Salinity PPM CL // // //

Weight lb/gal -- Vis. // // //

Approx. Logged Cement Top

Calculated Cement Top

Max. Hole Temperature 97

Tool No. D2

Spacing Recorded 3-5

Equipment -- Location 71 Hays

Recorded By Scott Clemons

Witnessed By Tom Larson

<<< Fold Here >>>

All interpretations are opinions based on inferences from electrical or other measurements and we cannot and do not guarantee the accuracy or correctness of any interpretation, and we shall not, except in the case of gross or willful negligence on our part, be liable or responsible for any loss, costs, damages, or expenses incurred or sustained by anyone resulting from any interpretation made by any of our officers, agents or employees. These interpretations are also subject to our general terms and conditions set out in our current Price Schedule.

Comments

Thank you for using Pioneer Energy Services
(785) 625-3858

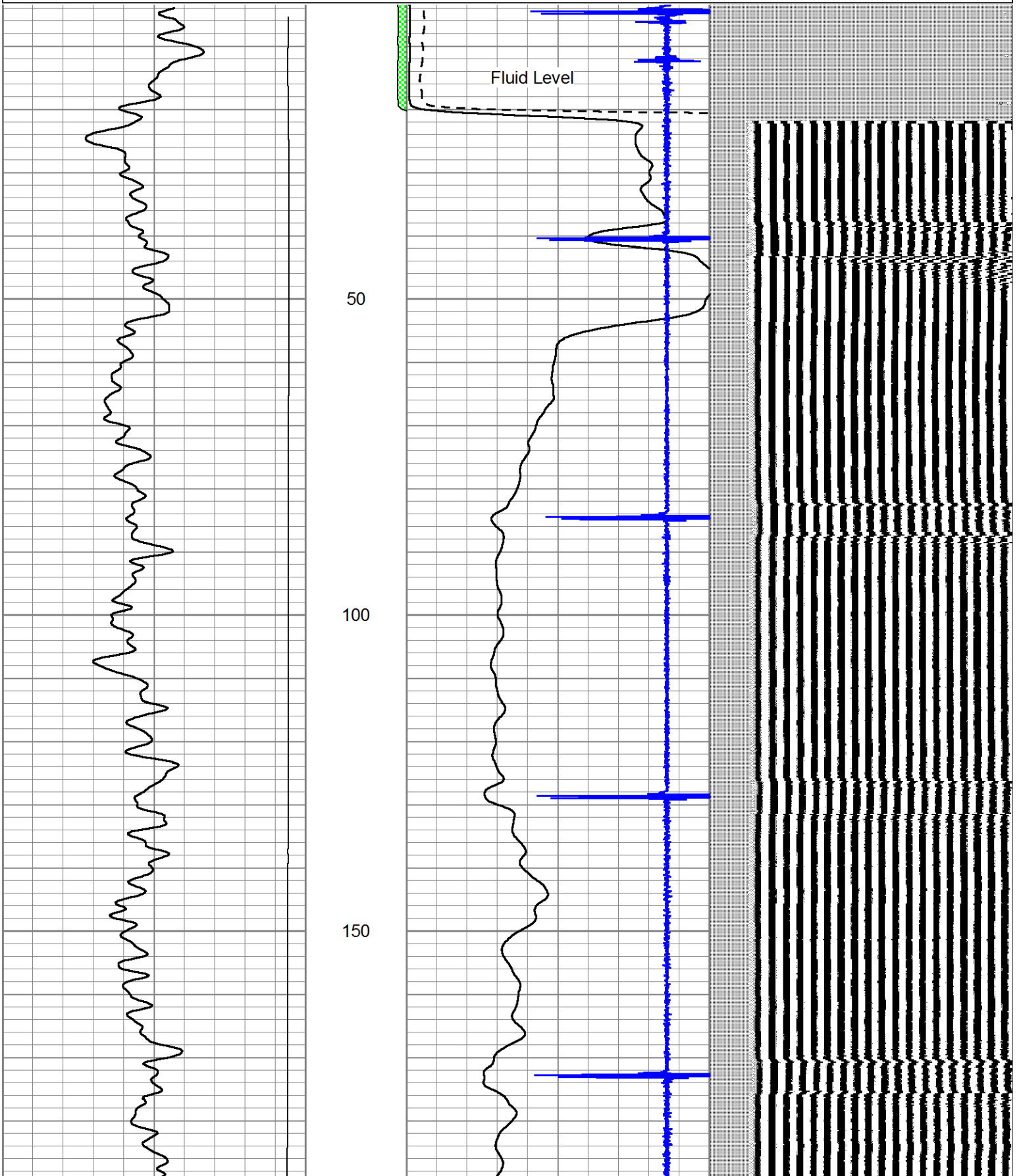
Dighton Ks., South to Rd. 90,
1 East, 1/2 South, East Into

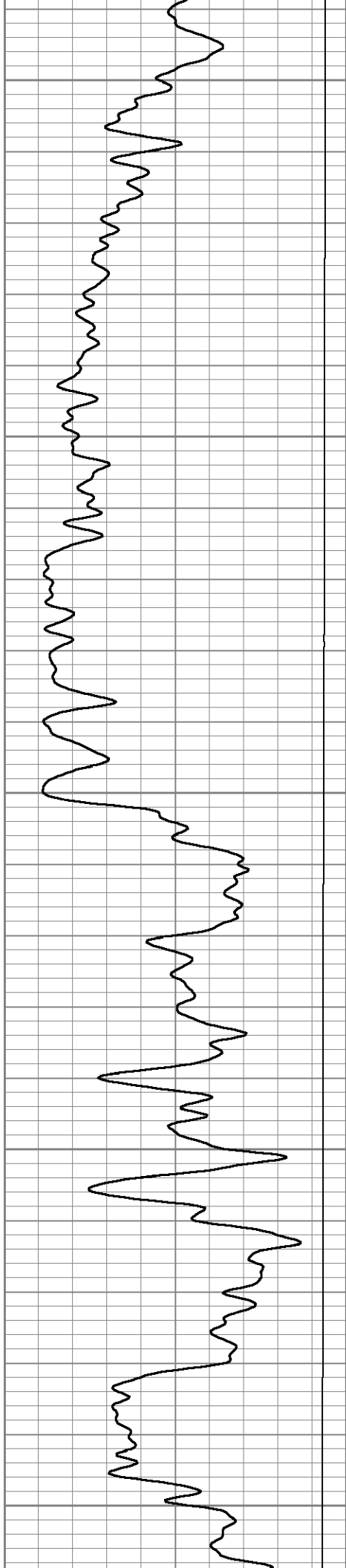


Main Pass

Database File: laron_hineman_#1swd.db
 Dataset Pathname: grcb/pass5
 Presentation Format: cbldig
 Dataset Creation: Mon Jun 03 10:22:46 2013 by Log SCH 111116
 Charted by: Depth in Feet scaled 1:240

0	GR (GAPI)	150	AMP3	0	Amplitude (mV)	100	200	Variable Density	1200
5000	LTEN (lb)	0	(mV)	0	Amplified Amplitude (mV)	20			
			-100	10	5	Collar Locator	-0.8		





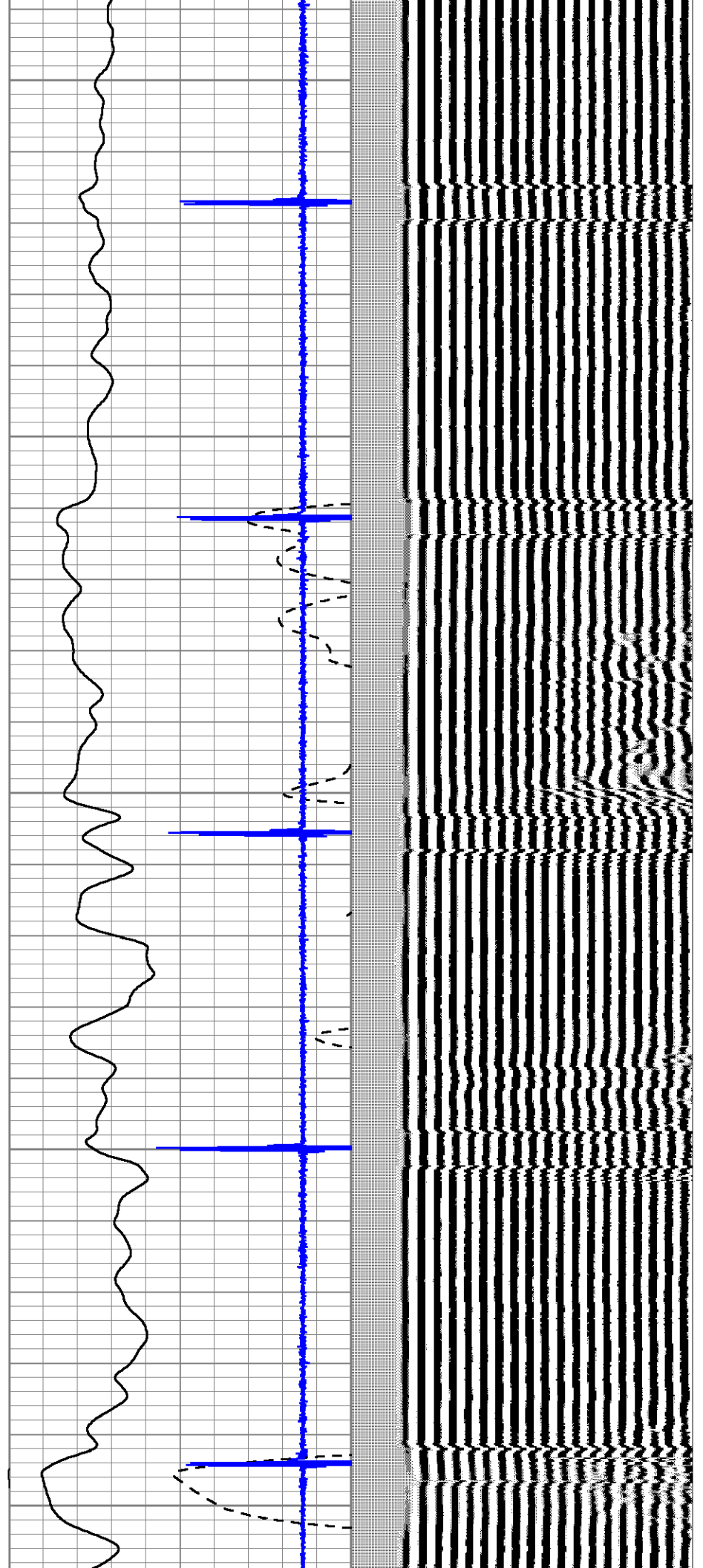
200

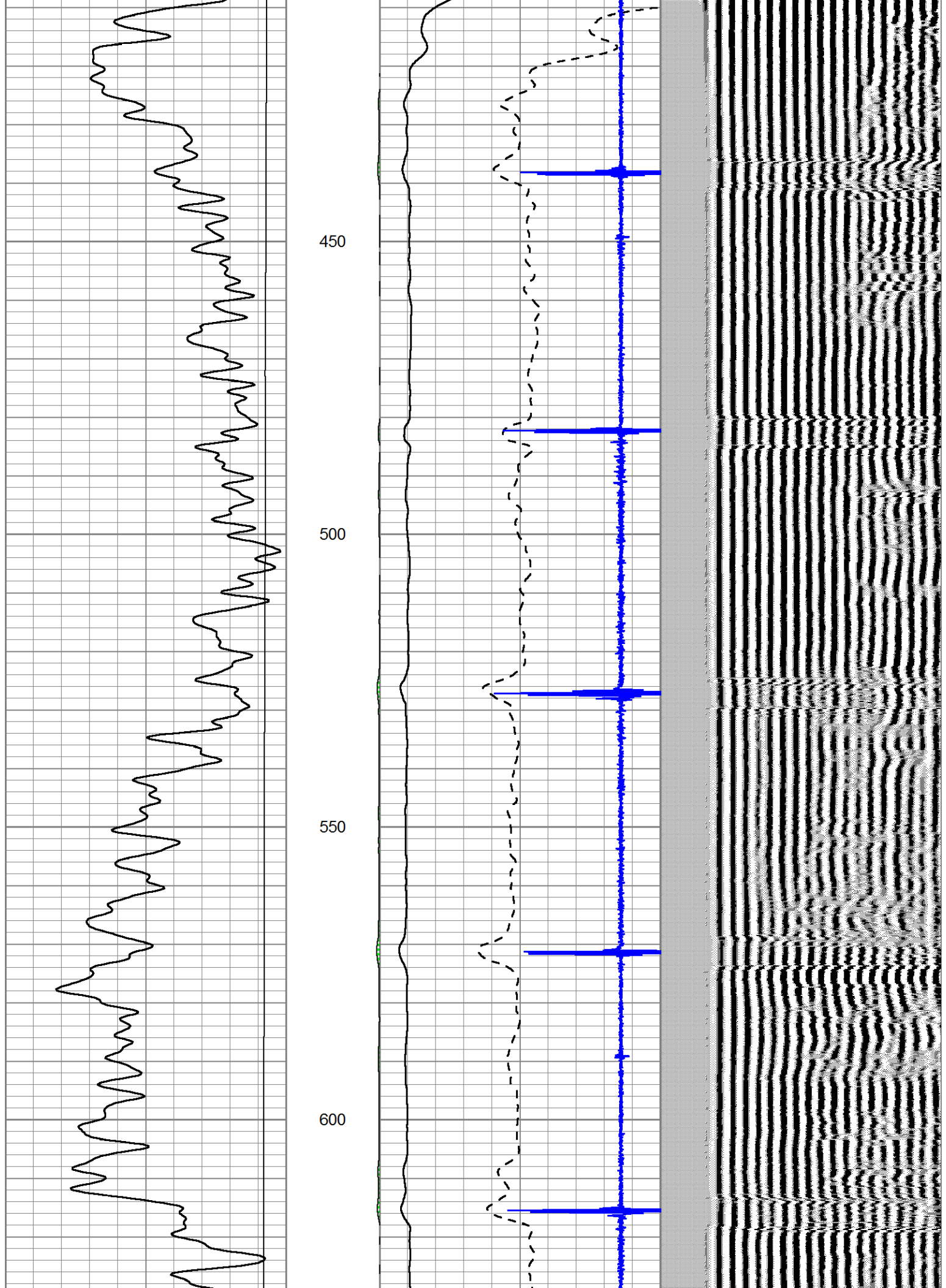
250

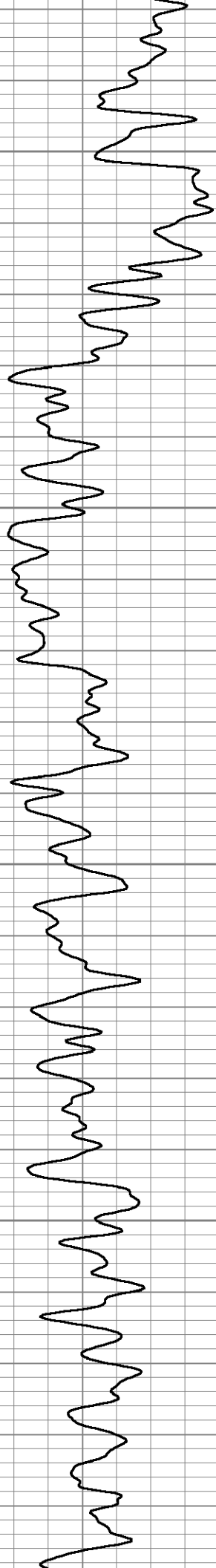
300

350

400





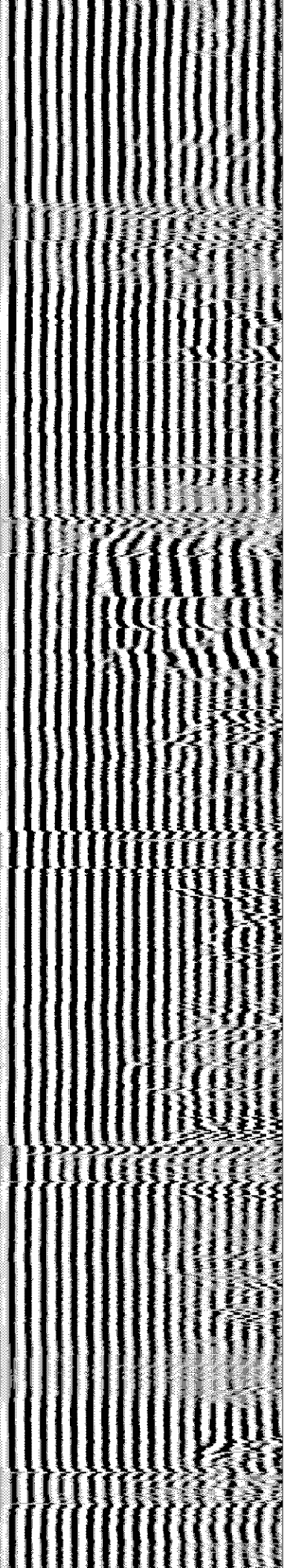
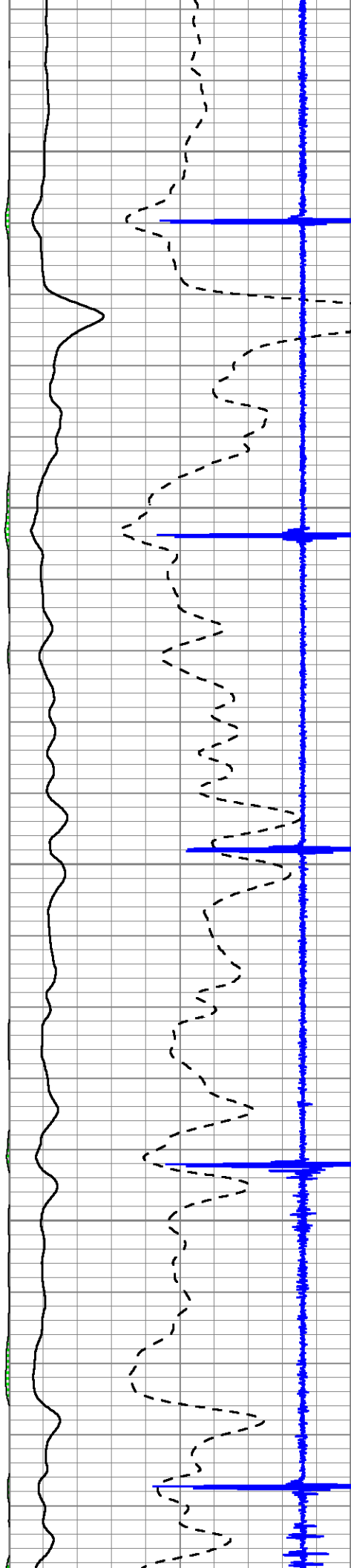


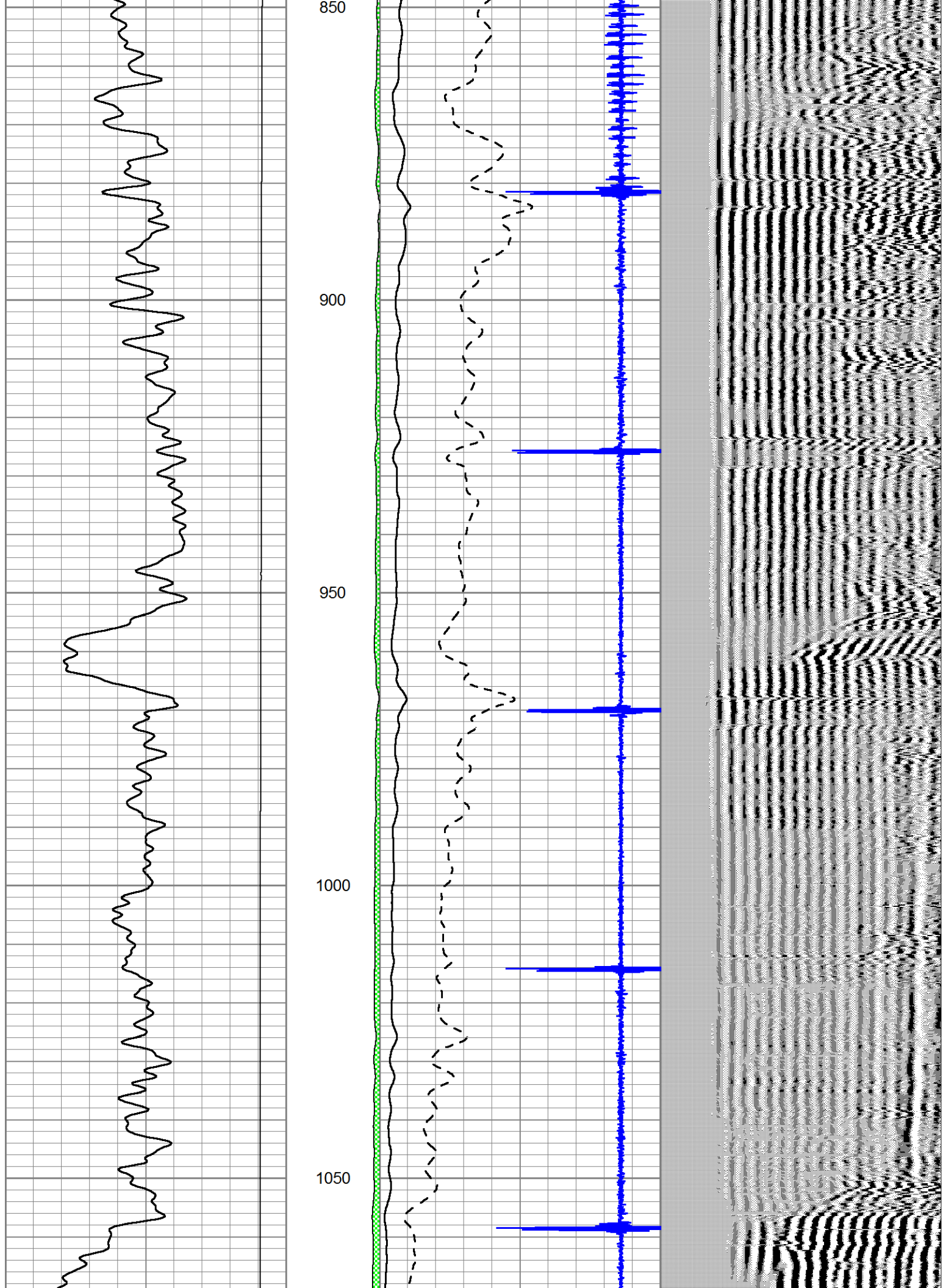
650

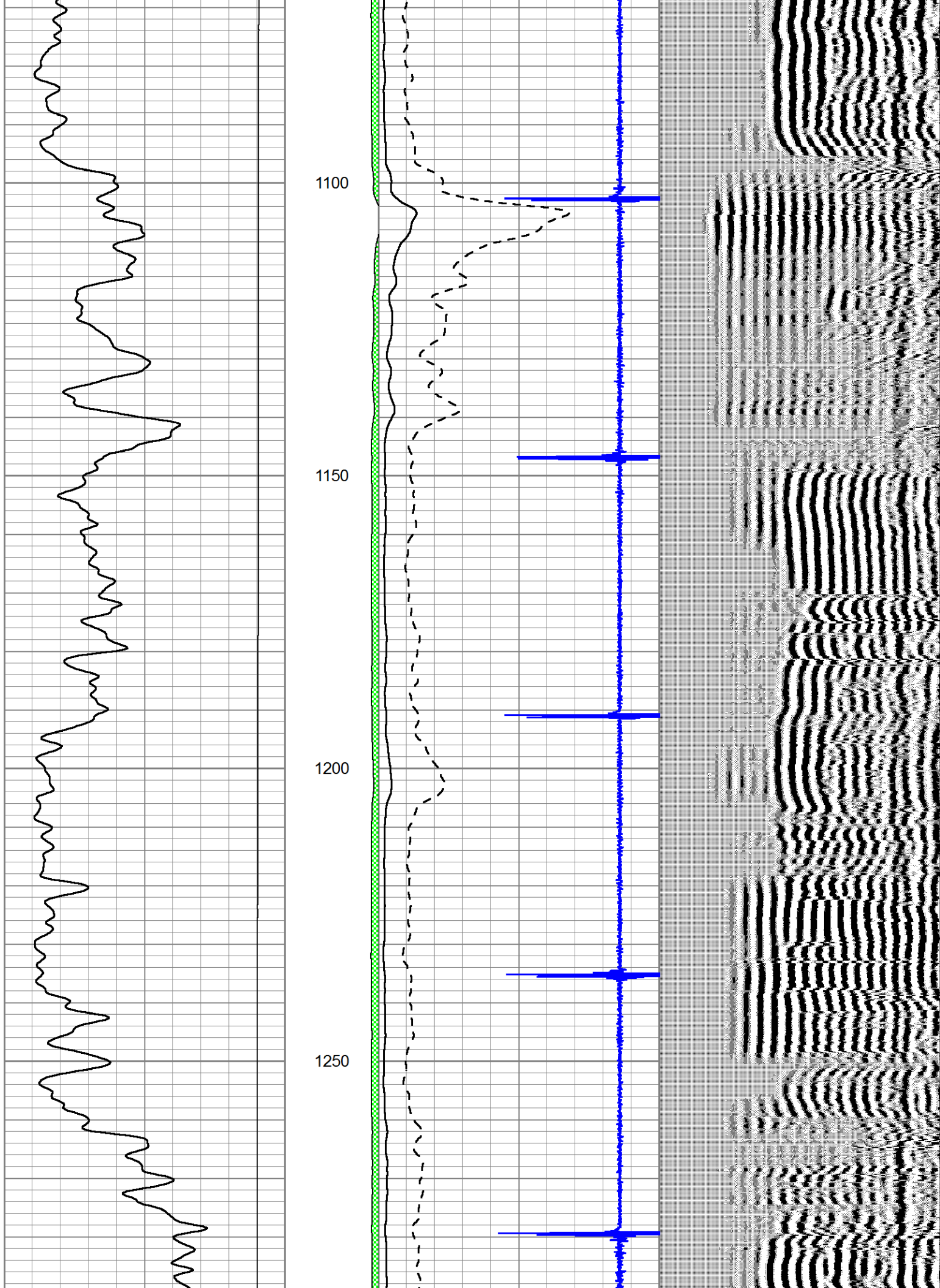
700

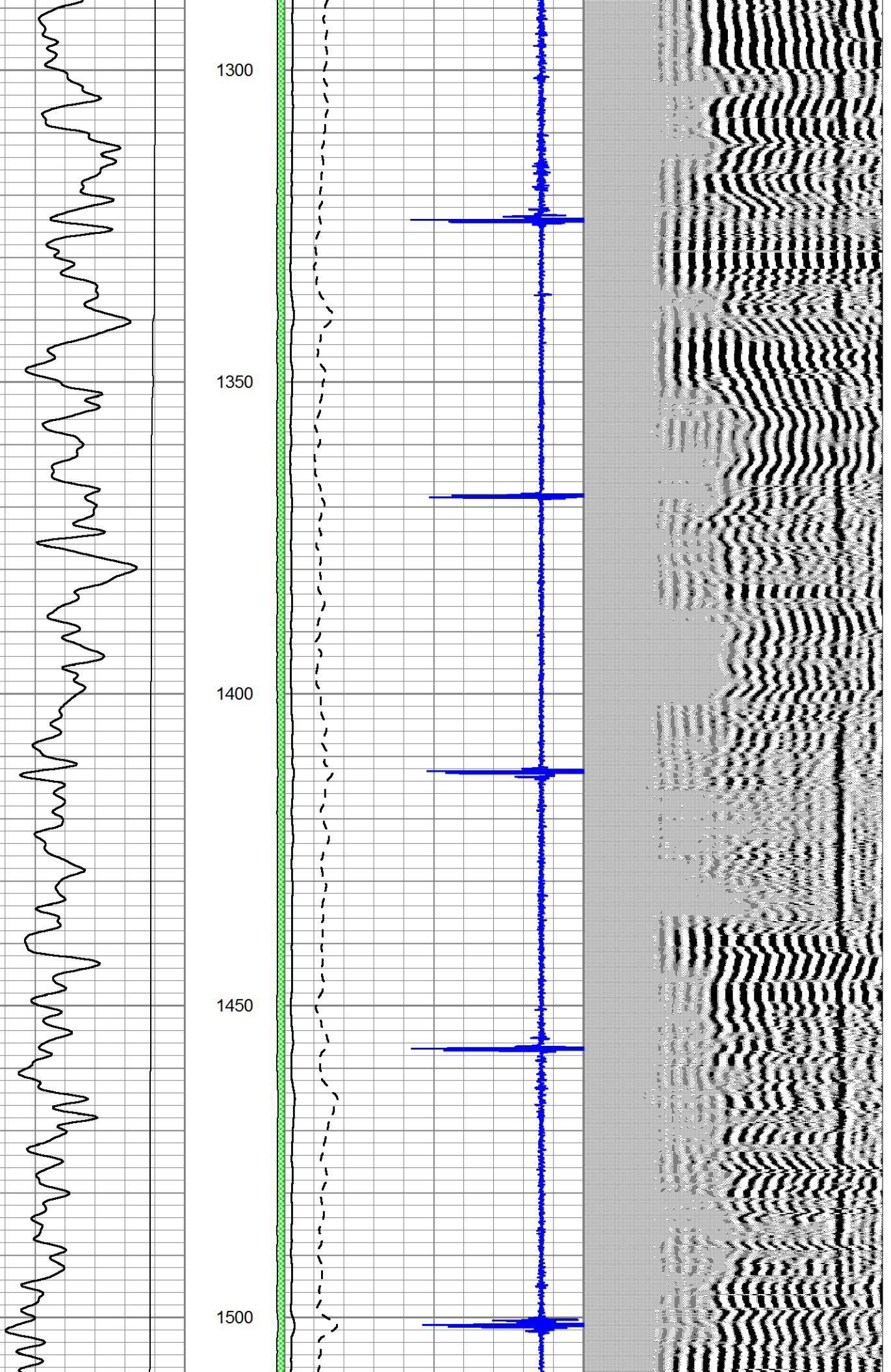
750

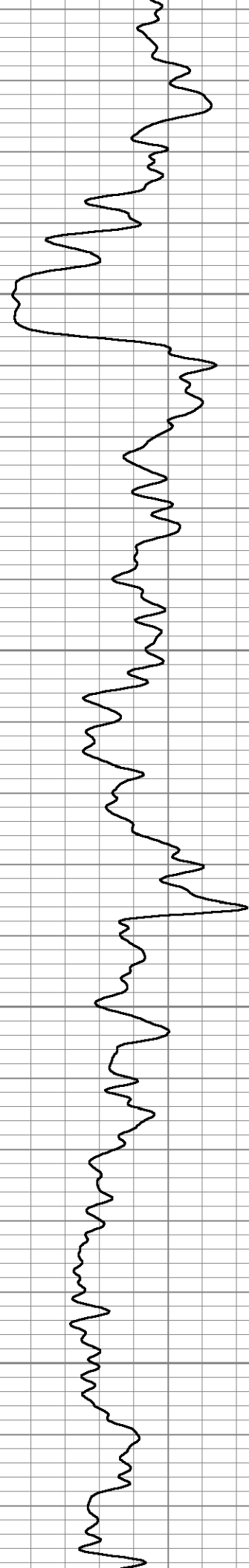
800









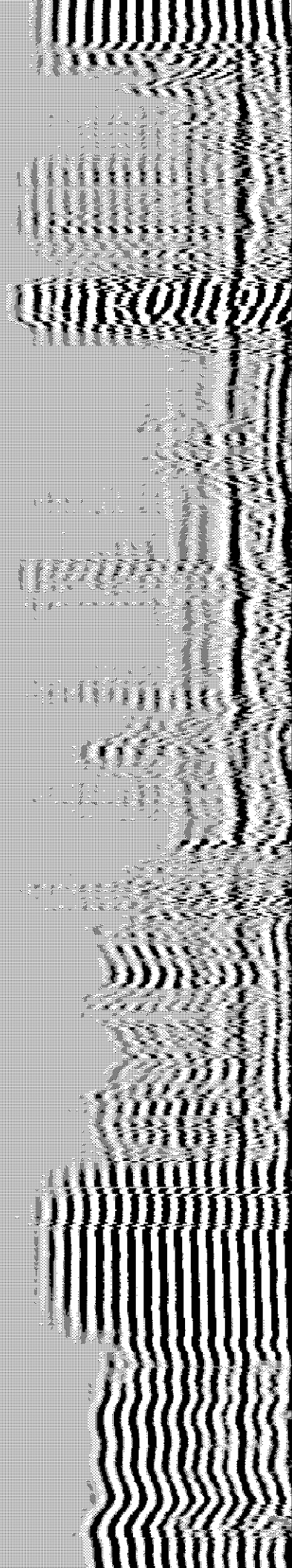


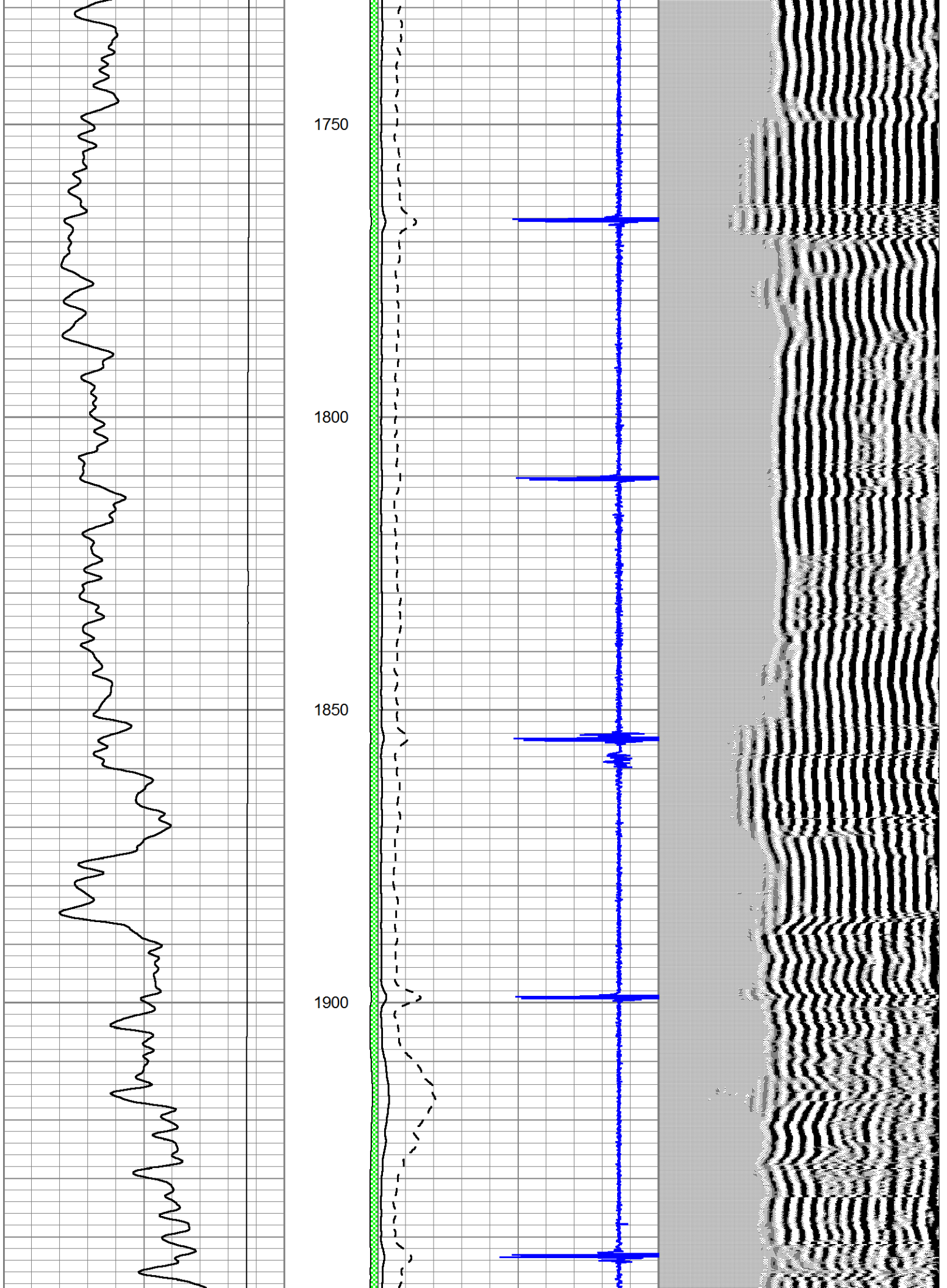
1550

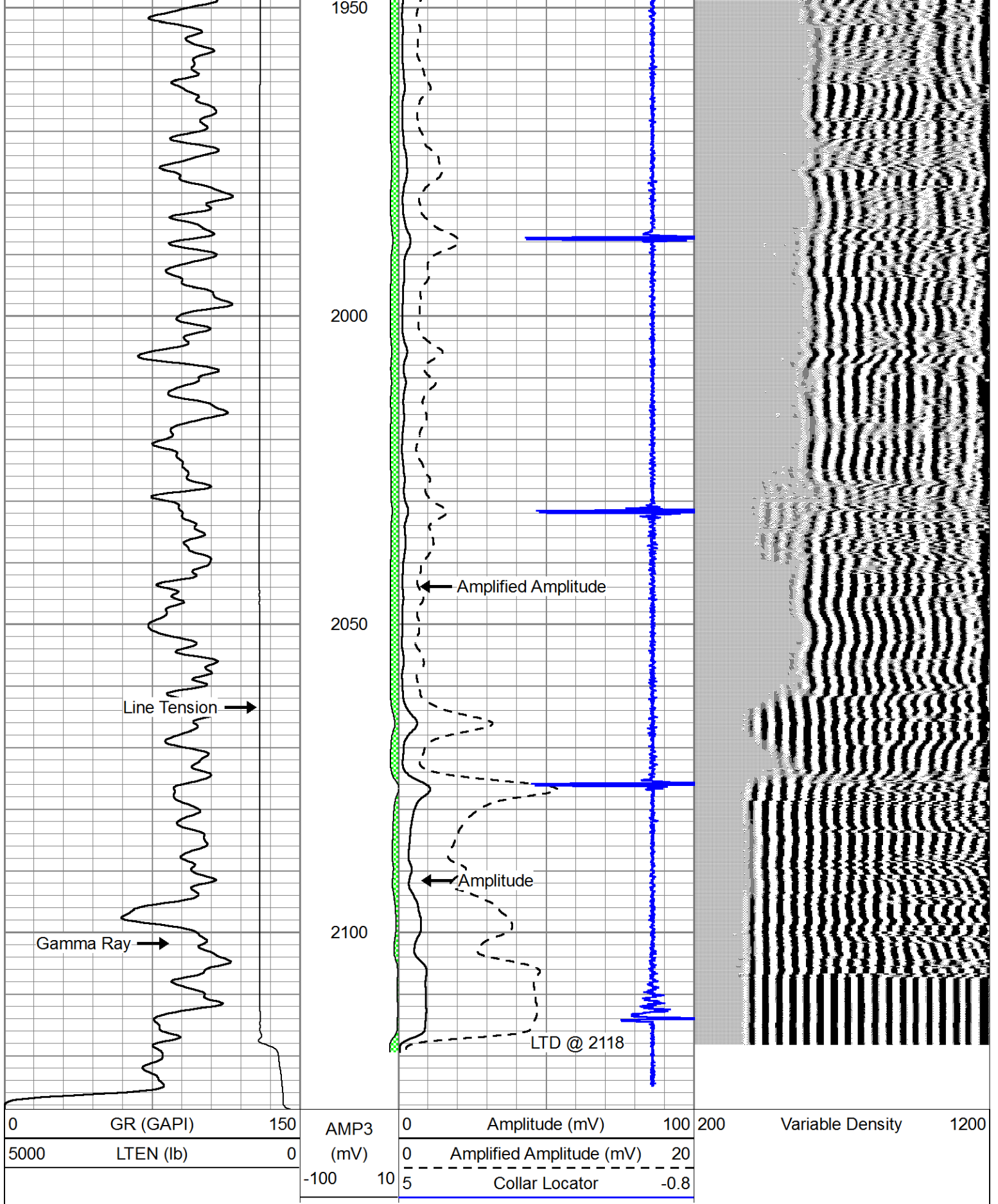
1600

1650

1700

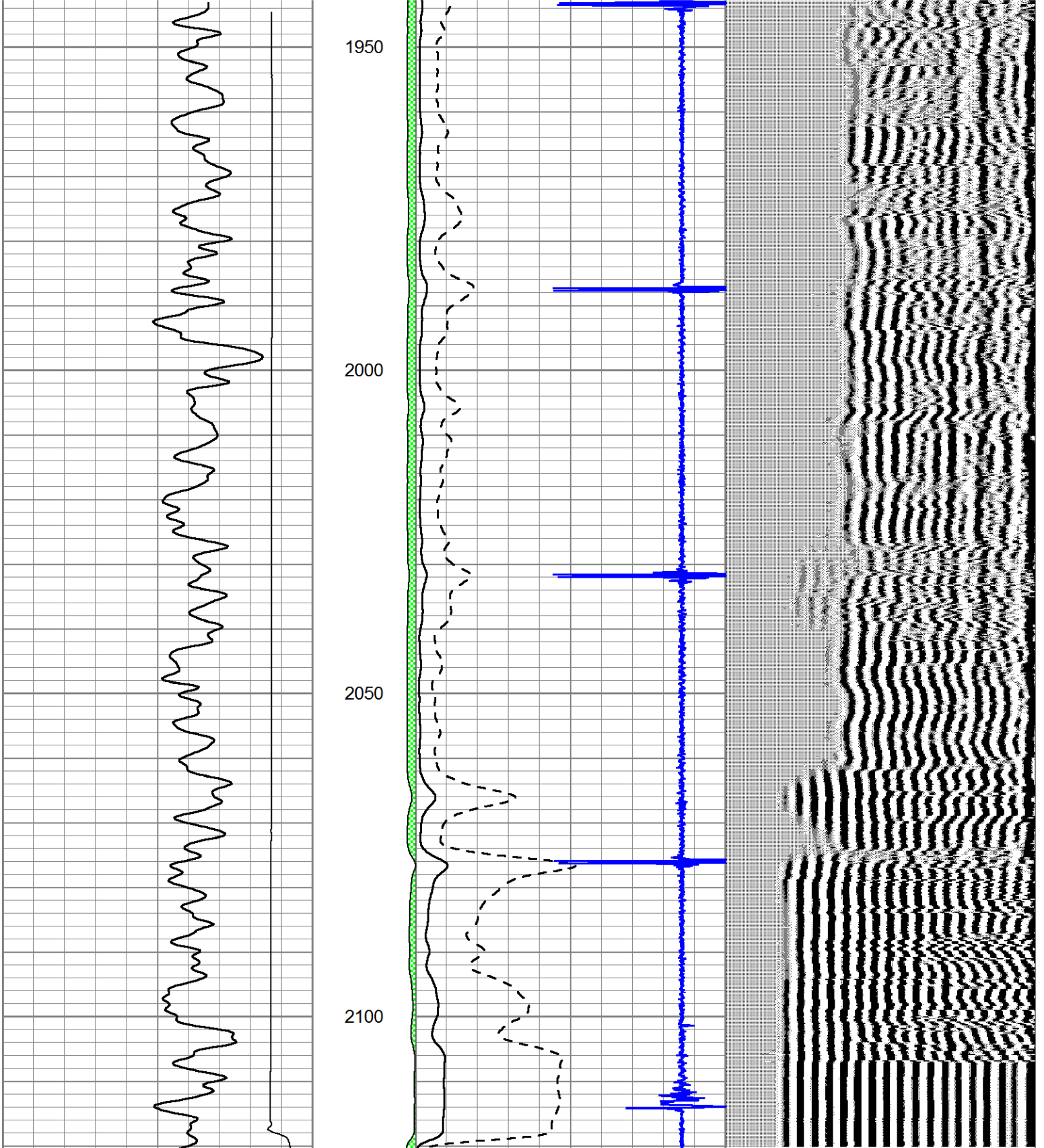






Database File: laron_hineman_#1swd.db
 Dataset Pathname: grcbl/pass4
 Presentation Format: cbl dig
 Dataset Creation: Mon Jun 03 10:16:44 2013 by Log SCH 111116
 Charted by: Depth in Feet scaled 1:240

0	GR (GAPI)	150	AMP3	0	Amplitude (mV)	100	200	Variable Density	1200
5000	LTEN (lb)	0	(mV)	0	Amplified Amplitude (mV)	20			
			-100 10	5	Collar Locator	-0.8			



0	GR (GAPI)	150	AMP3	0	Amplitude (mV)	100	200	Variable Density	1200
5000	LTEN (lb)	0	(mV)	0	Amplified Amplitude (mV)	20			
			-100 10	5	Collar Locator	-0.8			