



**GAMMA RAY  
CEMENT BOND  
COMPLETION LOG**

Company	POSTROCK ENERGY CORP.	Location	WILSON	State	KANSAS
Well	GRADY, JAMES #5-15	API #	1720 FNL & 2415 FNL	Other Services	OPEN HOLE
Field	CHEROKEE BASIN CBM	SE	SE NW	Date	4-18-2013
County	WILSON	Permian Datum	GL	Elevation	1002'
City	WILSON	Log Measured From	GL	D.L.	1002'
State	KANSAS	Dilling Measured From	GL		
Section	SEC 5 TWP 28S RGE 17E	Date	4-22-2013		
Run Number	21W	Depth Driver	1107'		
Top Log Interval	0	Depth Logger	1100.4'		
Bottom Logged Interval	1085.4'				
Fluid Level	WATER				
Production Testing	5" @ TD				
Max. Recorded Temp.					
Estimated Cement Top					
Amount & Type Cement					
Dilling Contractor	105				
Equipment Number					
Location	GORRILEY, R				
Recorded By	HAYS, R				

All interpretations are opinions based on inferences from electrical or other measurements and we cannot and do not guarantee the accuracy or correctness of any interpretation, and we shall not, except in the case of gross or willful negligence on our part, be liable or responsible for any loss, costs, damages, or expenses incurred or sustained by anyone resulting from any interpretation made by any of our officers, agents or employees. These interpretations are also subject to our general terms and conditions set out in our current Price Schedule.

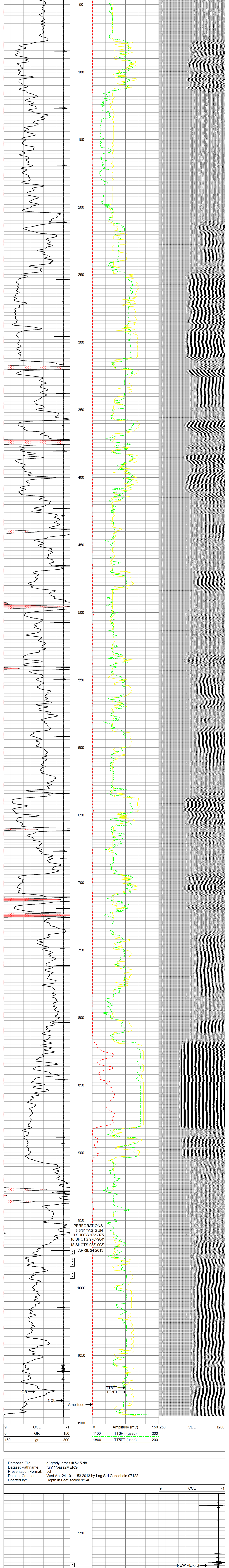
Comments

THANK YOU

Sensor	Offset (ft)	Schematic	Description	Len (ft)	OD (in)	Wt (lb)
			tekco tekco cont.	2.17	1.69	5.00
WVF3FT	6.58		CBLTEKCO-TEKCO2RCVR (TEKCO169) 1 11/16" TEKCO 2 RCVR DELWARE	9.75	1.69	50.00
WVF5FT	5.58					
WVFCAL	2.17		tekco tekco cont.	2.17	1.69	5.00
WVFSYNC	2.17					

Dataset: grady james # 5-15.db: field/well/run1/pass2MERGE  
 Total Length: 14.08 ft  
 Total Weight: 60.00 lb  
 O.D.: 1.69 in

Database File:	e:\grady james # 5-15.db
Dataset Pathname:	pass2MERGE
Presentation Format:	scbl_dr
Dataset Creation:	Mon Apr 22 14:48:44 2013
Charted by:	Depth in Feet scaled 1:240



Database File:	e:\grady james # 5-15.db
Dataset Pathname:	run11/pass2MERG
Dataset Creation:	Wed Apr 24 10:11:53 2013 by Log Std Caseload 07122
Charted by:	Depth in Feet scaled 1:240

