



Pioneer Energy Services

Microresistivity Log

API No.	15-035-24541-00-00		
Company	Val Energy, Inc.		
Well	Watt #1-3		
Field	David		
County	Cowley	State	Kansas
Location	N2 SE SE 990' FSL / 660' FEL		
Sec: 3	Twp: 31S	Rge: 4E	Other Services CNL/CDL DIL/BHCS

Permanent Datum	Ground Level	Elevation 1258	K.B. 1268
Log Measured From	Kelly Bushing	10 Ft. Above Perm. Datum	D.F. 1258
Drilling Measured From	Kelly Bushing		G.L. 1258
Date	7/21/2013		
Run Number	Two		
Depth Driller	3525		
Depth Logger	3519		
Bottom Logged Interval	3518		
Top Log Interval	1600		
Casing Driller	8.625 @ 220		
Casing Logger	218		
Bit Size	7.875		
Type Fluid in Hole	Chemical		
Salinity, ppm CL	2000		
Density / Viscosity	9.4	48	
pH / Fluid Loss	10.5	8.0	
Source of Sample	Flowline		
Rm @ Meas. Temp	0.65 @ 80		
Rmf @ Meas. Temp	0.49 @ 80		
Rmc @ Meas. Temp	0.88 @ 80		
Source of Rmf / Rmc	Charts		
Rm @ BHT	0.47 @ 111		
Operating Rig Time	4 Hours		
Max Rec. Temp. F	111		
Equipment Number	17		
Location	Hays		
Recorded By	R. Barnhart		
Witnessed By	Joe Baker		

<<< Fold Here >>>

All interpretations are opinions based on inferences from electrical or other measurements and we cannot and do not guarantee the accuracy or correctness of any interpretation, and we shall not, except in the case of gross or willful negligence on our part, be liable or responsible for any loss, costs, damages, or expenses incurred or sustained by anyone resulting from any interpretation made by any of our officers, agents or employees. These interpretations are also subject to our general terms and conditions set out in our current Price Schedule.

Comments

Thank you for using Log-Tech, Inc.
(785) 625-3858

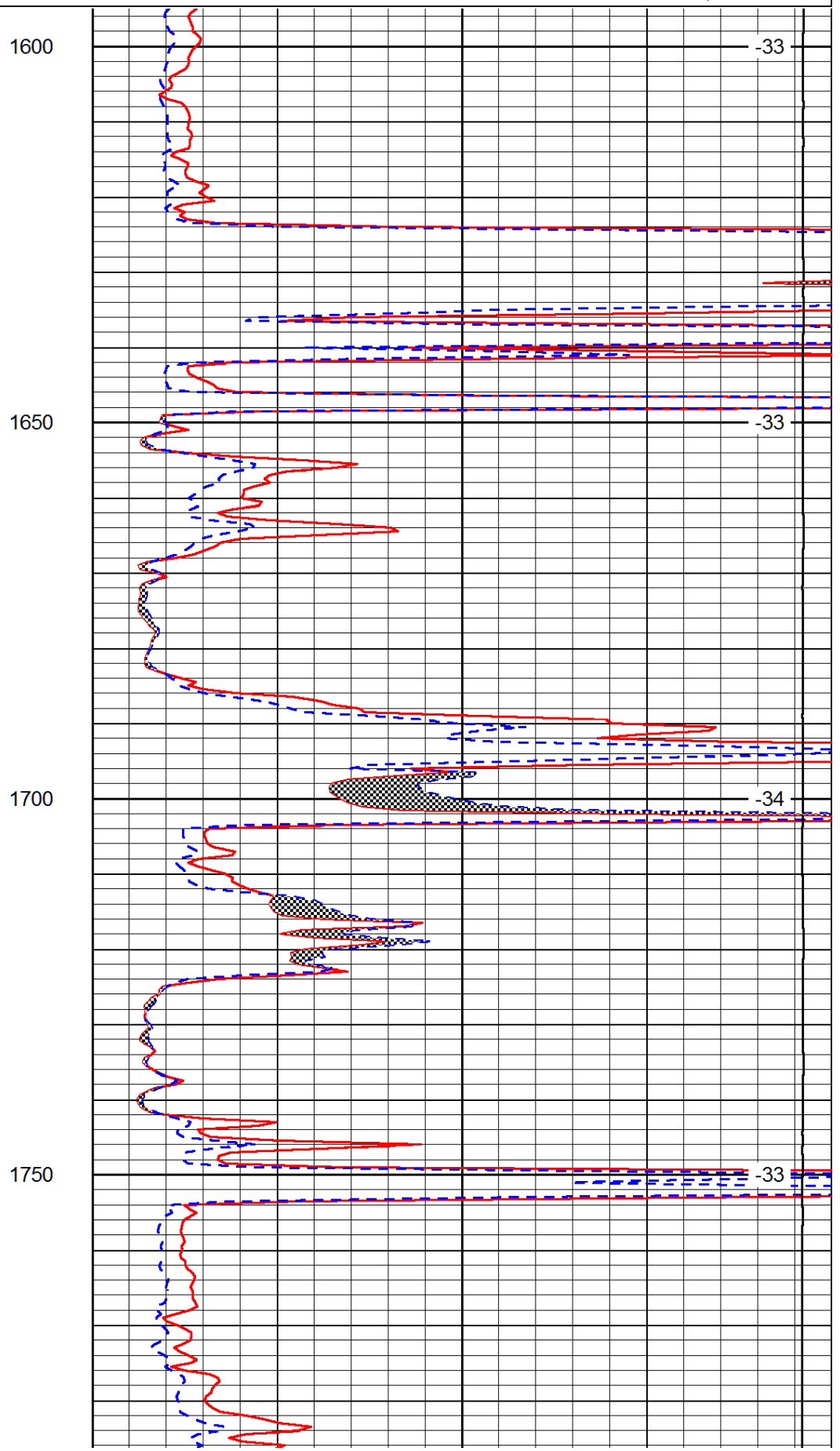
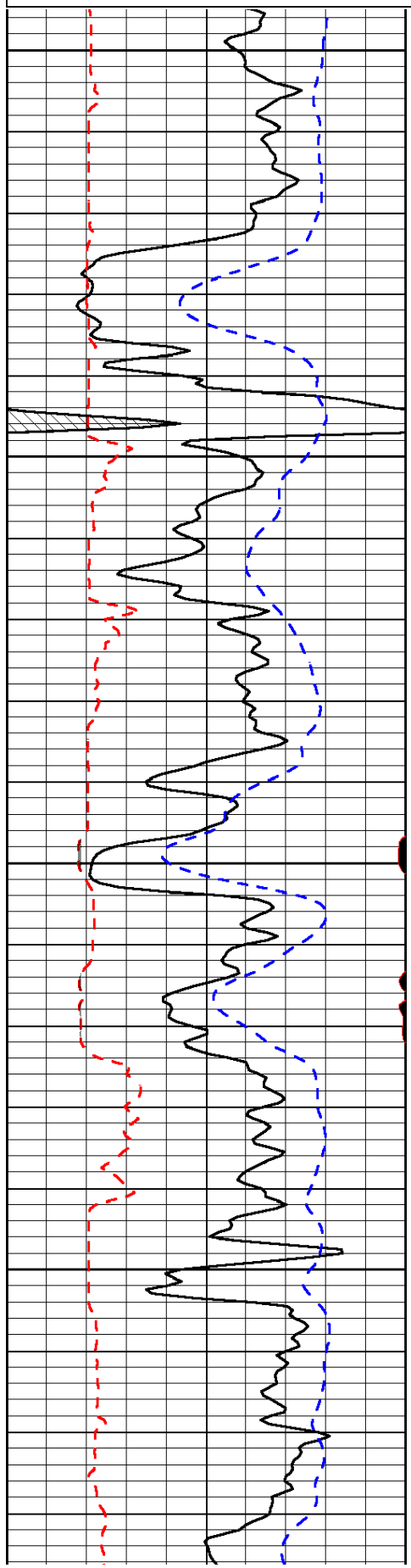
Augusta, KS:
S to Hwy. 77 & Hwy 15: 2E, 1/2S, W into

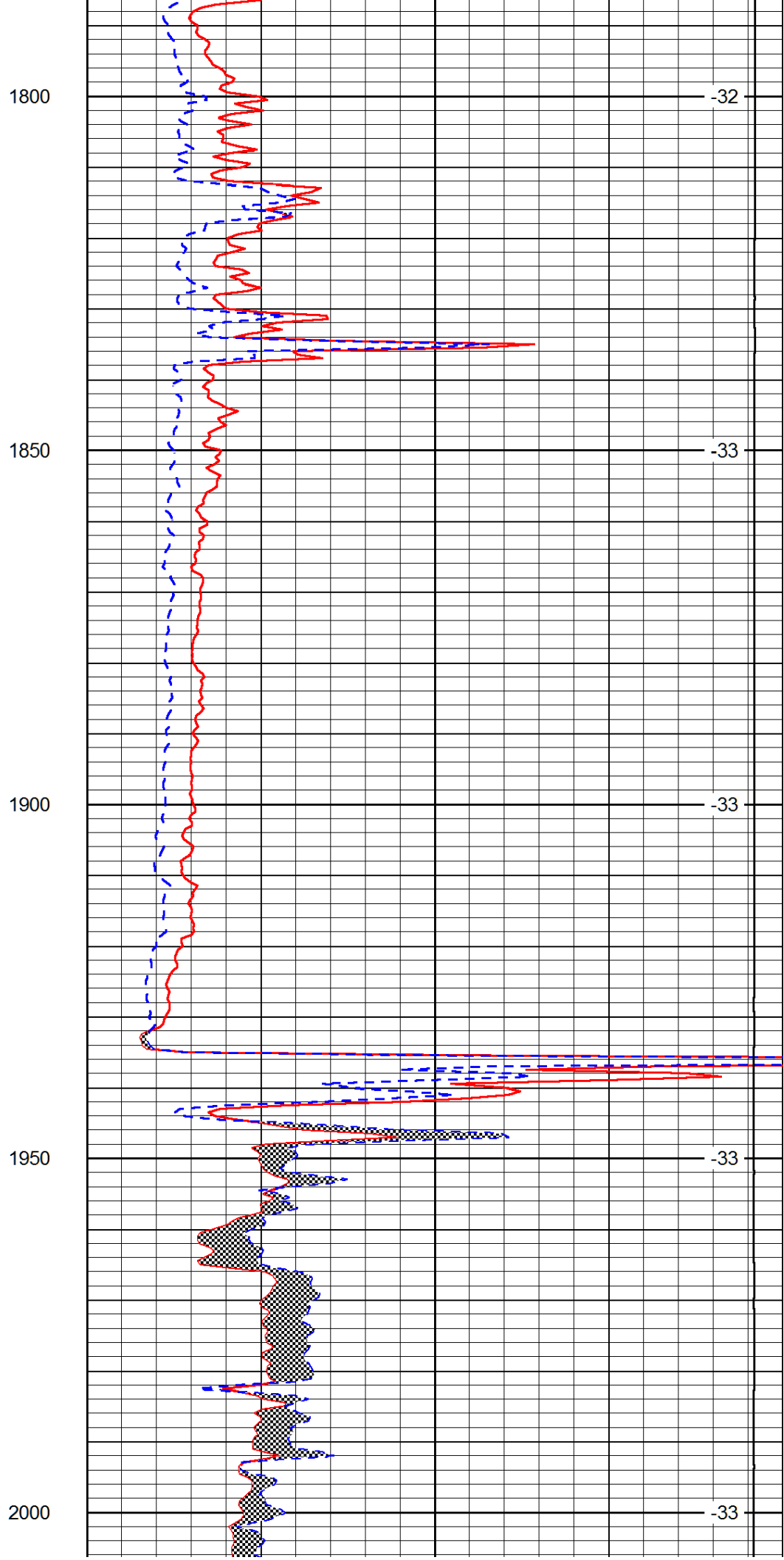
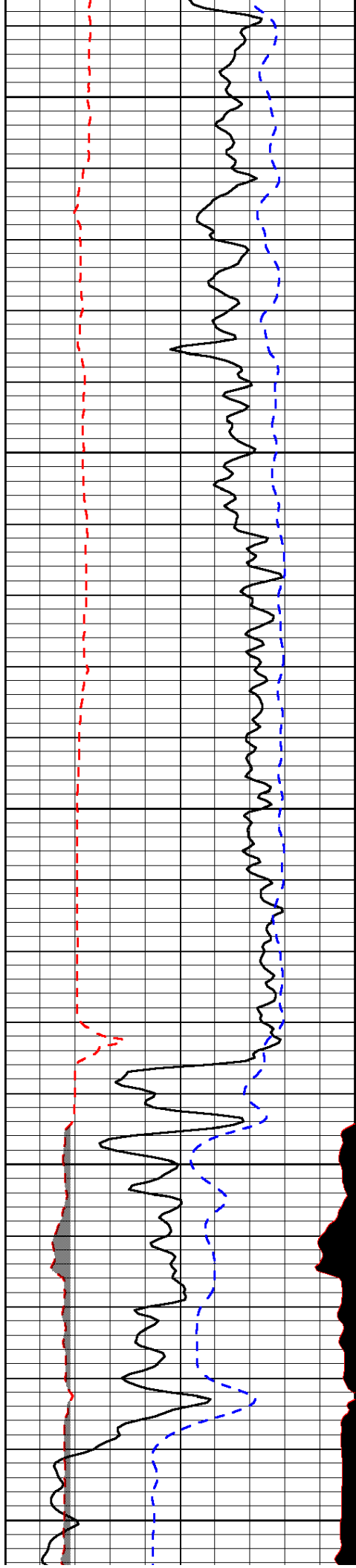
Database File: val_hd.db
 Dataset Pathname: dil/valmain
 Presentation Format: micro
 Dataset Creation: Mon Jul 22 00:04:46 2013
 Charted by: Depth in Feet scaled 1:240

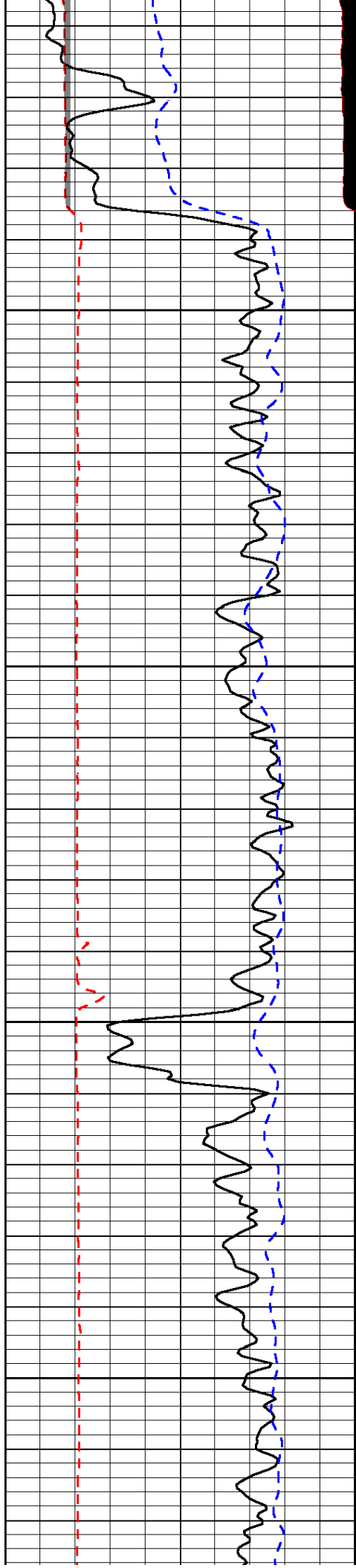
0	Gamma Ray (GAPI)	150
6	MCAL (in)	16
2.875	Mud Cake (in)	7.875
-200	SP (mV)	0

0	Micro Inverse 1 X 1 (Ohm-m)	40
0	Micro Normal 2" (Ohm-m)	40
10000	Line Weight (lb)	0

LSPD
(ft/min)





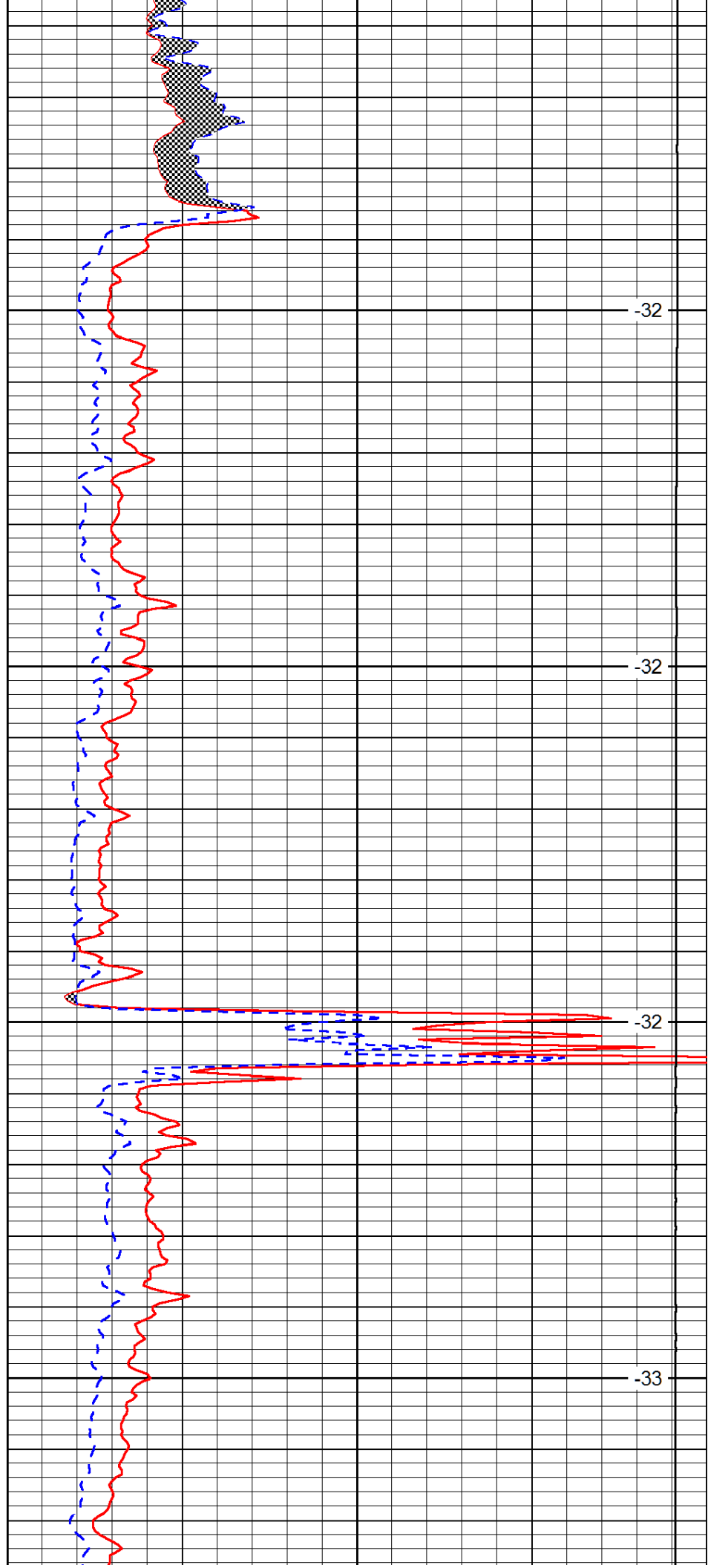


2050

2100

2150

2200

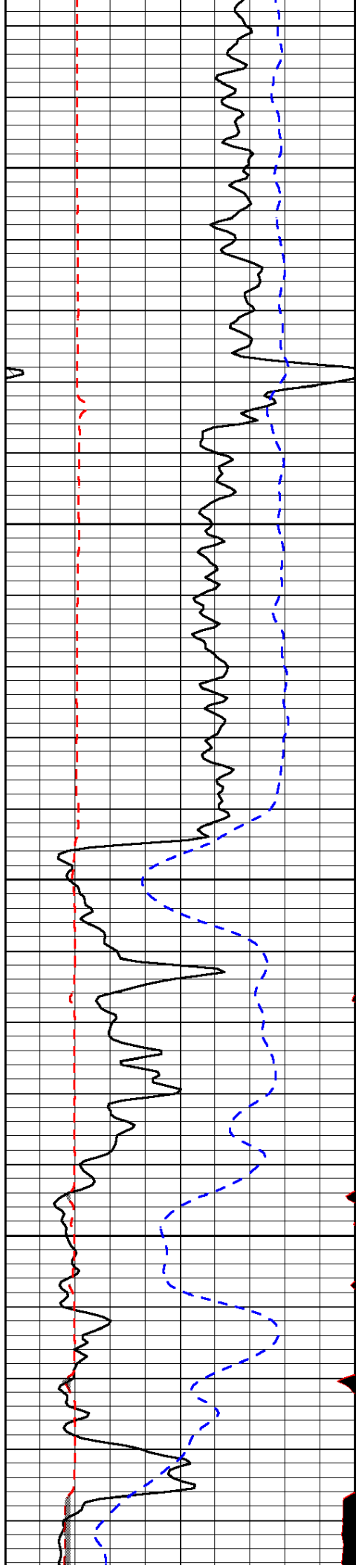


-32

-32

-32

-33



2250

-32

2300

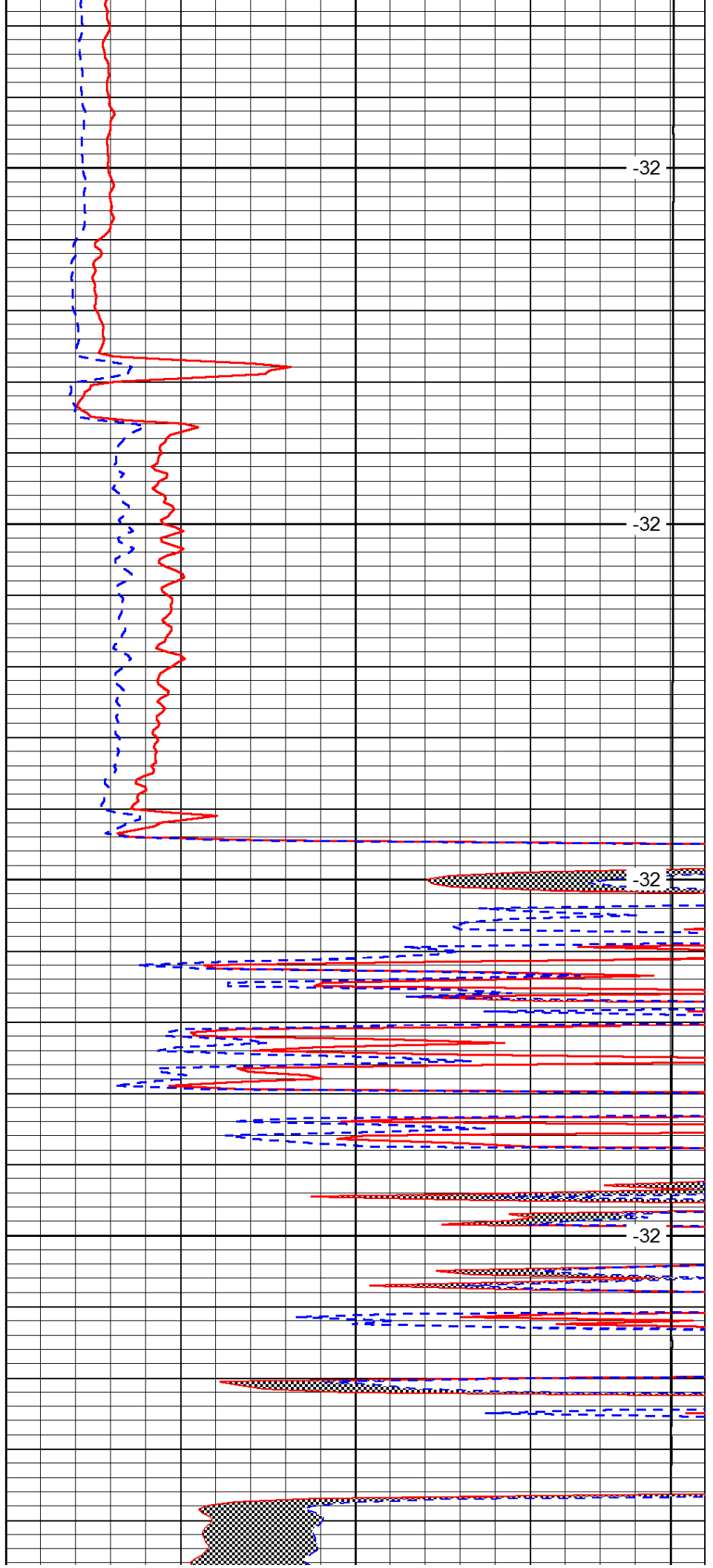
-32

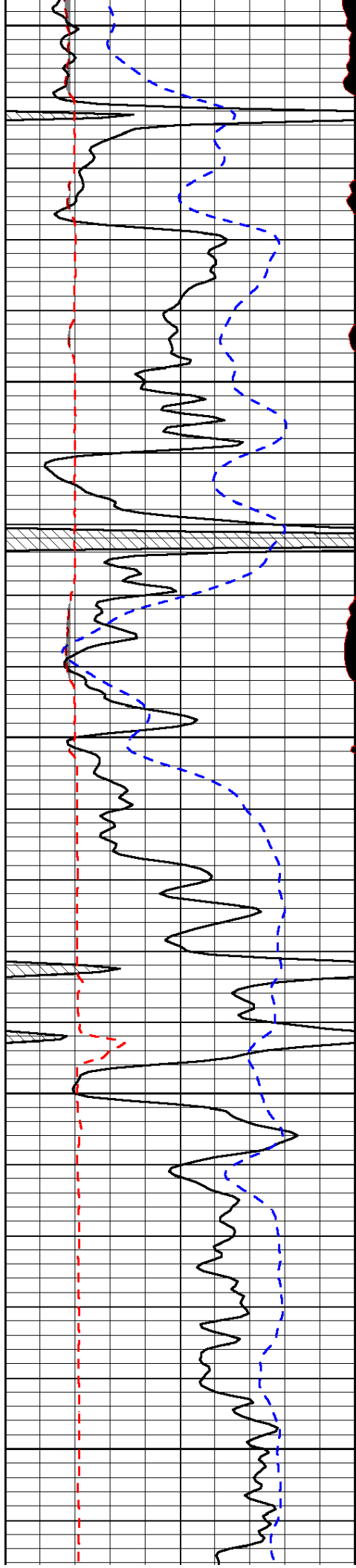
2350

-32

2400

-32





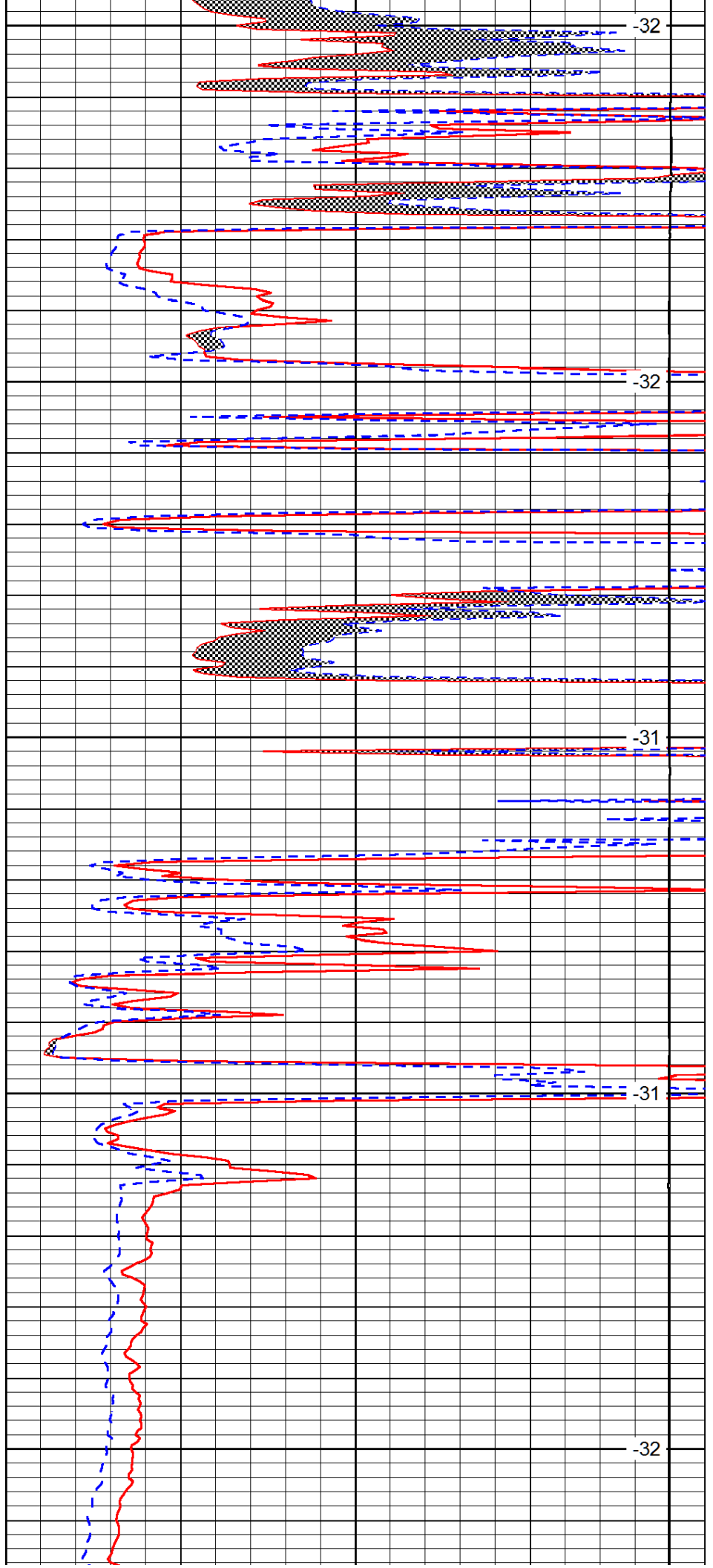
2450

2500

2550

2600

2650



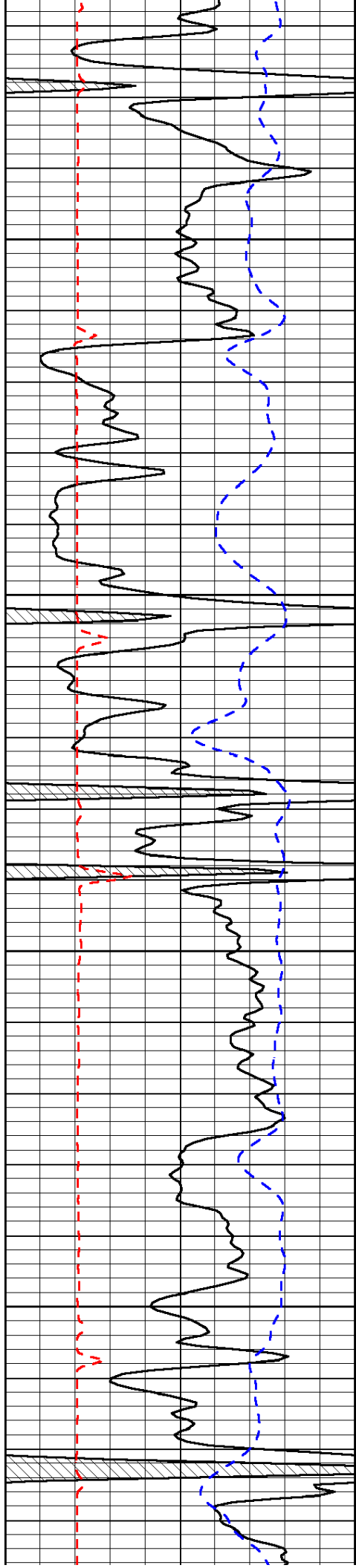
-32

-32

-31

-31

-32

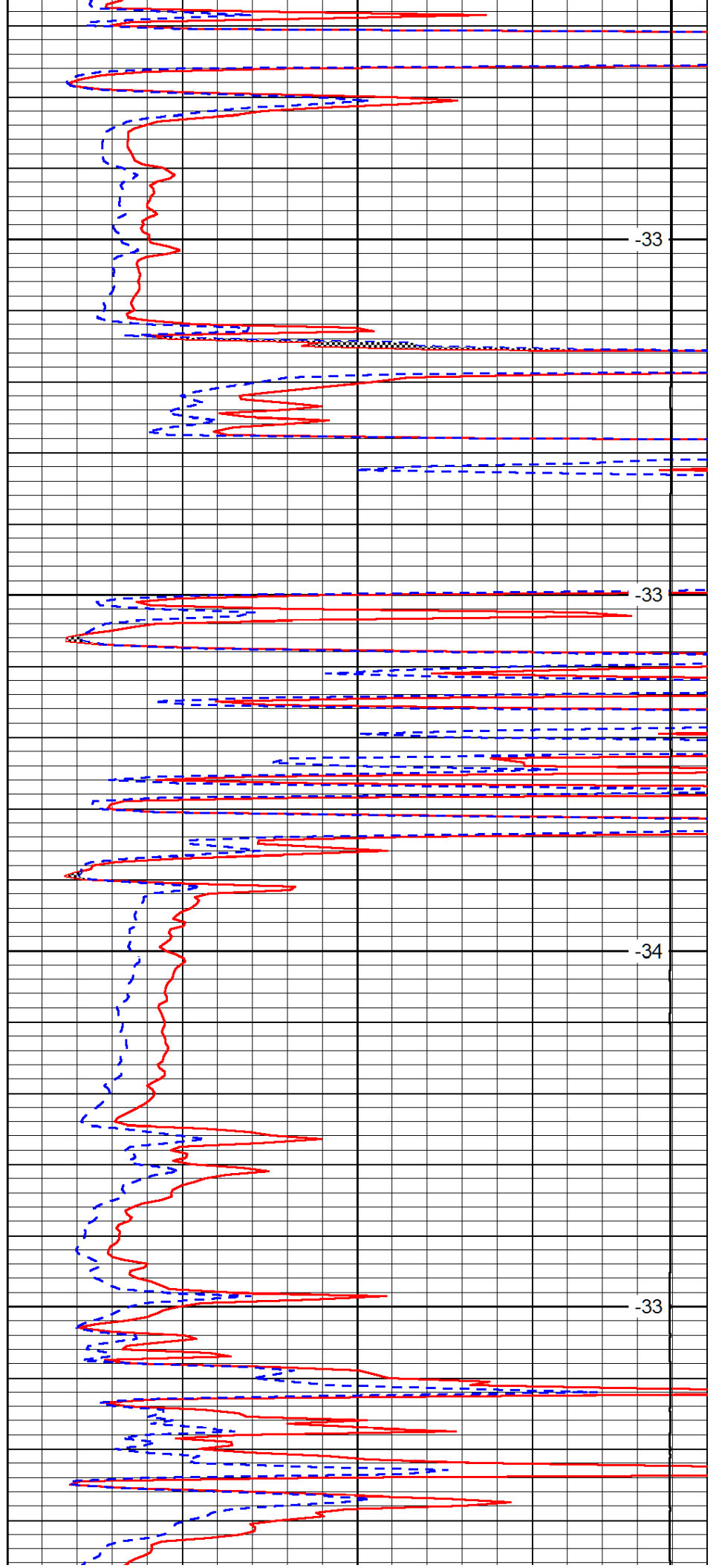


2700

2750

2800

2850

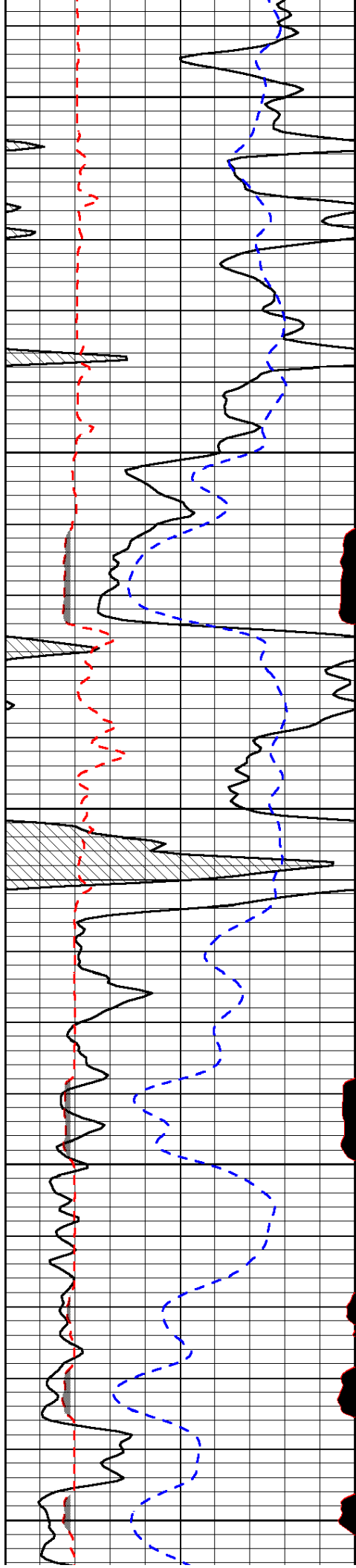


-33

-33

-34

-33



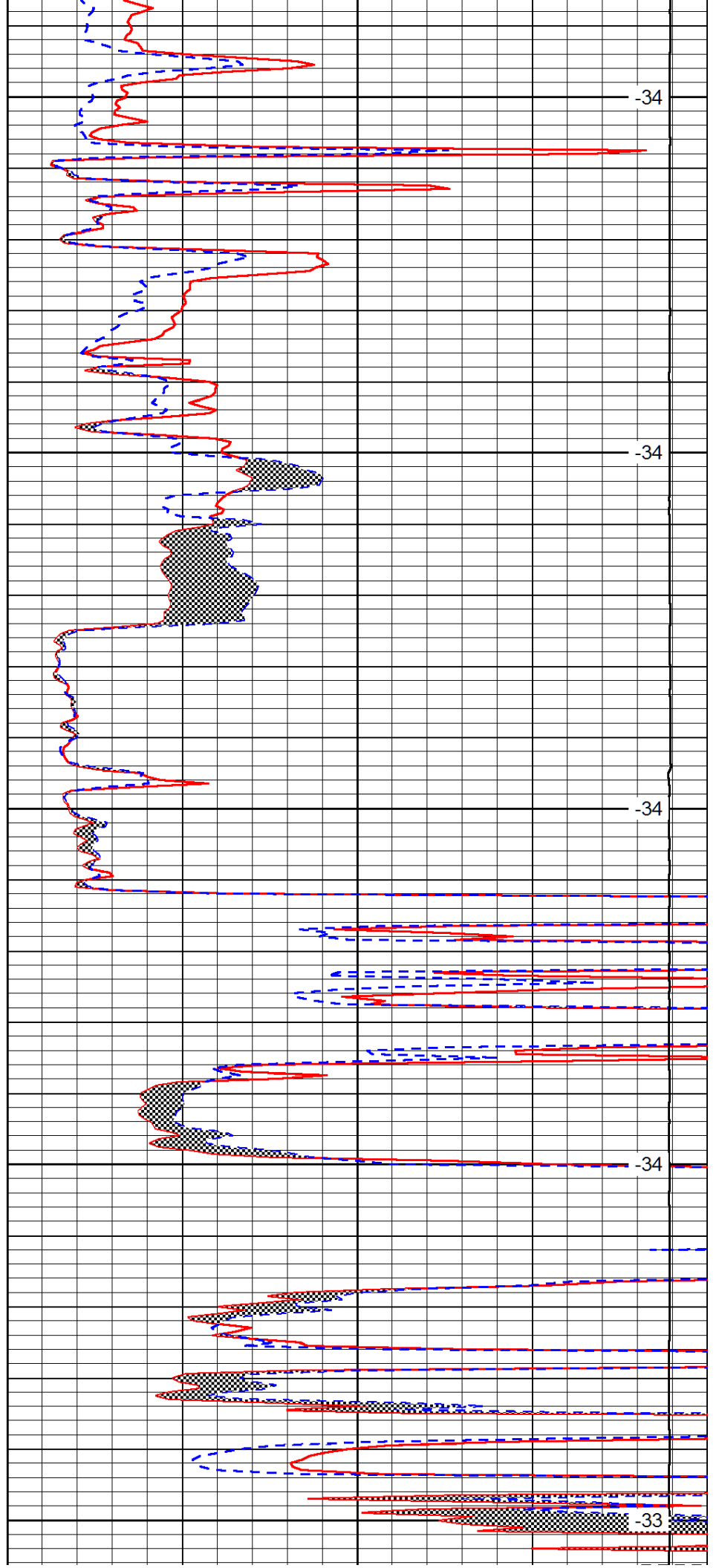
2900

2950

3000

3050

3100



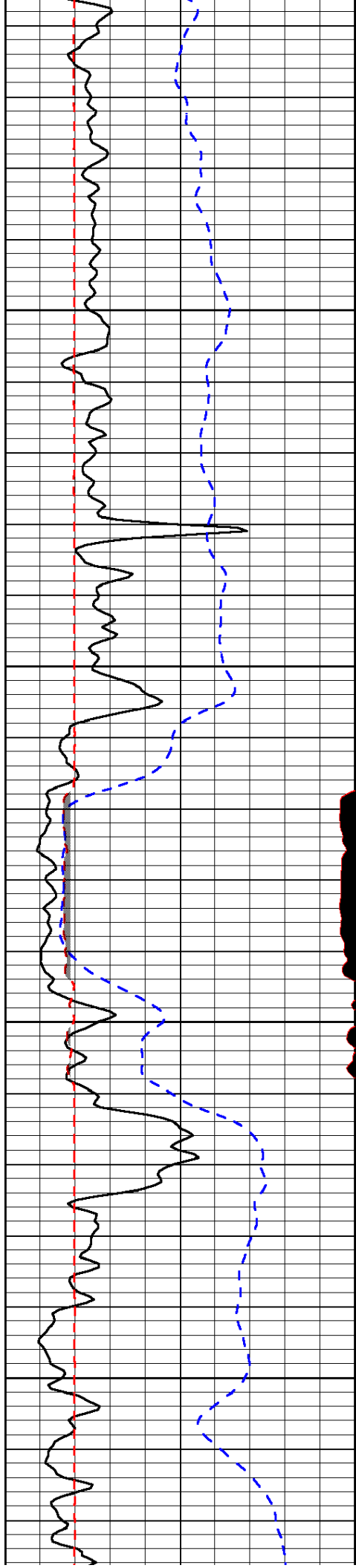
-34

-34

-34

-34

-33

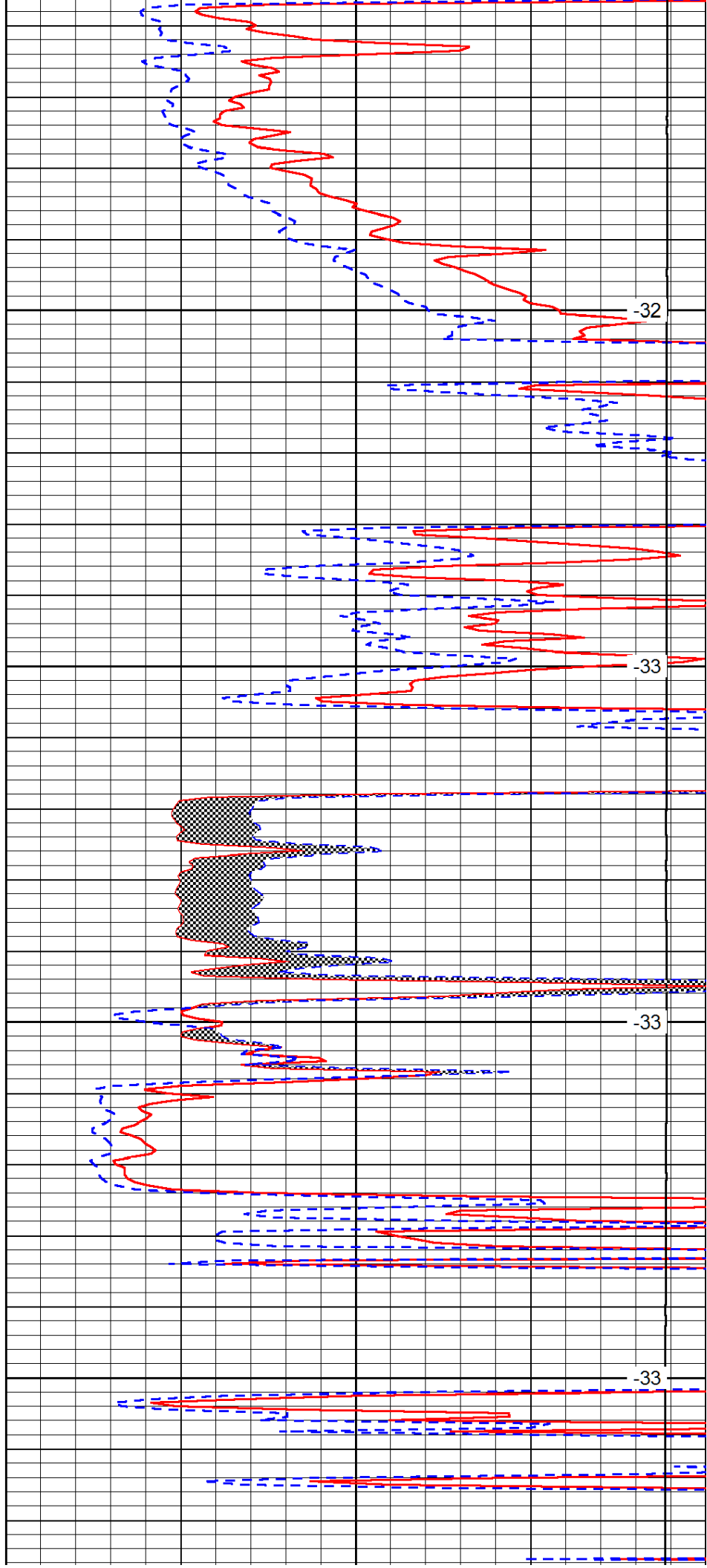


3150

3200

3250

3300

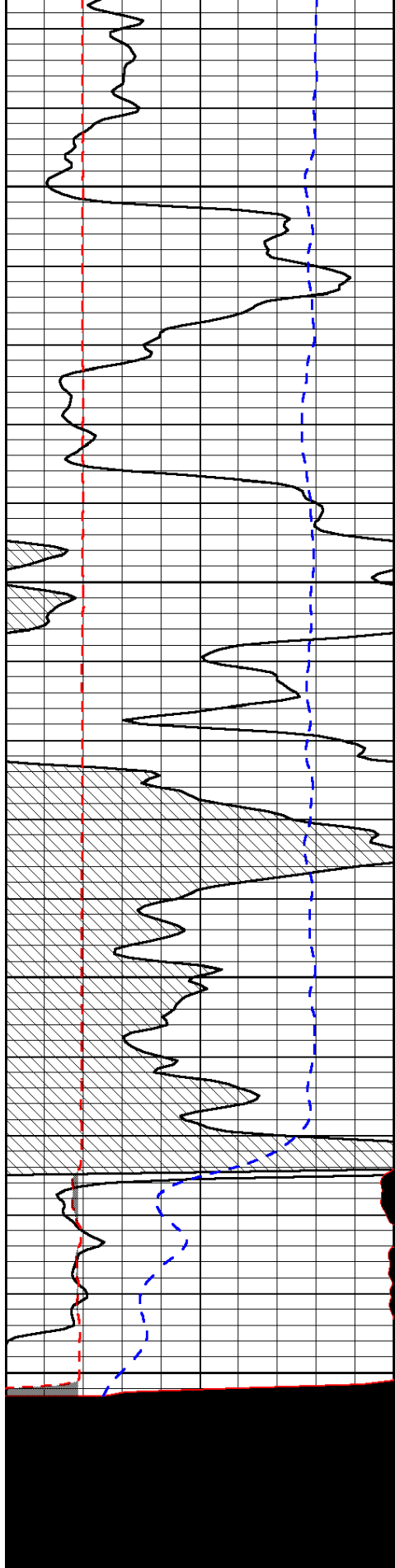


-32

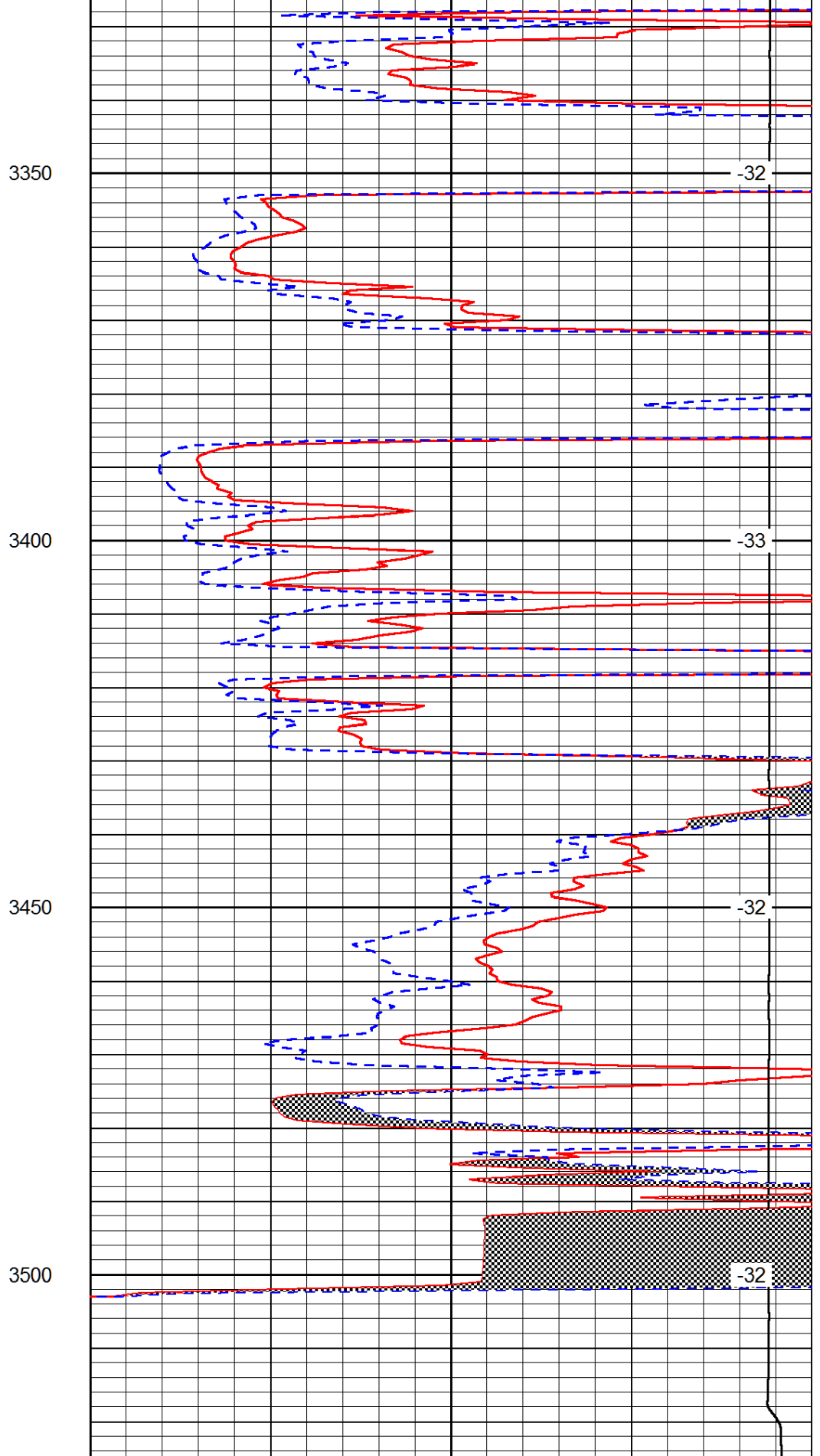
-33

-33

-33



0	Gamma Ray (GAPI)	150
6	MCAL (in)	16
2.875	Mud Cake (in)	7.875
-200	SP (mV)	0



0	Micro Inverse 1 X 1 (Ohm-m)	40
0	Micro Normal 2" (Ohm-m)	40
10000	Line Weight (lb)	0
	LSPD	(#/min)

