



MIDWEST SURVEYS
 LOGGING - PERFORATING - CONSULTING SERVICES
 P.O. Box 68, Osawatomie, KS 66064
 913 / 755 - 2128

GAMMA RAY / NEUTRON / CCL

File No. Company **Hoehn Oil, LLC**

Well **Fleming No. - 1**

Field **Paola - Rantoul**

County **Franklin** State **Kansas**

Location **2440' FSL & 2465' FEL**

Other Services **Perforate**

Sec. 20 Twp. 16S Rge. 21E
 Permian Basin Log Measured From GL
 Drilling Measured From GL
 Elevation K.B. NA D.F. NA G.L. NA

API # 15-059-26.396

Date	05-28-2013
Run Number	One
Depth Difer	745.0
Depth Logger	727.3
Bottom Logged Interval	726.3
Top Log Interval	20.0
Fluid Level	Full
Type Fluid	Water
Density / Viscosity	NA
Salinity - PPM Cl	NA
Max Recorded Temp	NA
Estimated Cement Top	0.0
Equipment No	107
Recorded By	Steve Windisch
Witnessed By	Jim Hoehn

BORE-HOLE RECORD			
RUN	BIT	FROM	TO
One	9.875"	0.0	22.0
Two	5.625"	22.0	745.0

CASING RECORD			
SIZE	WT.	FROM	TO
7.00"	17.0 #	0.0	22.2
2.875"	6.5 #	0.0	735.0

<<< Fold Here >>>

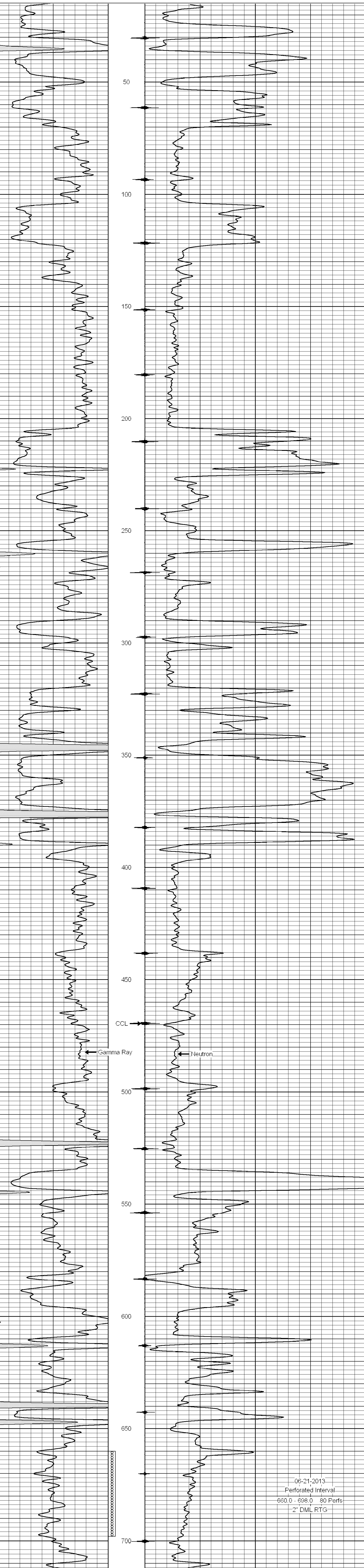
All interpretations are opinions based on inferences from electrical or other measurements and we cannot and do not guarantee the accuracy or correctness of any interpretation, and we shall not, except in the case of gross or willful negligence on our part, be liable or responsible for any loss, costs, damages, or expenses incurred or sustained by anyone resulting from any interpretation made by any of our officers, agents or employees. These interpretations are also subject to our general terms and conditions set out in our current Price Schedule.

Comments

Drilling Contractor :
Evans Energy & Development, Inc

Database File: fleming1.db
 Dataset Pathname: pass1
 Presentation Format: gr-n-ccl
 Dataset Creation: Tue May 28 13:01:00 2013 by Log SCH 111116
 Charted by: Depth in Feet scaled 1:240

0	Gamma Ray (cps)	150	-1 CCL 1	10	Neutron (cps)	2100
150	Gamma Ray (cps)	300				



06-21-2013
 Perforated Interval
 660.0 - 698.0 80 Perfs
 2" DML RTG

0	Gamma Ray (cps)	150	-1 CCL 1	10	Neutron (cps)	2100
150	Gamma Ray (cps)	300				