



**COMPLETION
& PRODUCTION
SERVICES CO.**

**SONIC
LOG**

Company MULL DRILLING COMPANY, INC.
Well #2-8 BEAMER
Field BEAMER
County NESS
State KANSAS

Company MULL DRILLING COMPANY, INC.
Well #2-8 BEAMER
Field BEAMER
County NESS
State KANSAS

Location: API # : 15-135-25583-0000
1550' FSL & 1101' FWL
SE - SE - NW - SW
SEC 8 TWP 16S RGE 23W
Permanent Datum GROUND LEVEL Elevation 2498
Log Measured From KELLY BUSHING 5' A.G.L.
Drilling Measured From KELLY BUSHING
Other Services
CDL/CNL/PE
DIL/MEL
Elevation
K.B. 2503
D.F. 2501
G.L. 2498

Date	5/1/13
Run Number	TWO
Depth Driller	4600
Depth Logger	4600
Bottom Logged Interval	4588
Top Log Interval	200
Casing Driller	8 5/8"@222'
Casing Logger	222
Bit Size	7 7/8"
Type Fluid in Hole	CHEMICAL MUD
Density / Viscosity	9.3/47
pH / Fluid Loss	10.5/6.8
Source of Sample	FLOWLINE
Rim @ Meas. Temp	.750@80F
Rmf @ Meas. Temp	.563@80F
Rmc @ Meas. Temp	.900@80F
Source of Rmf / Rmc	MEASUREMENT
Rim @ BHT	.496@121F
Time Circulation Stopped	4.5 HOURS
Time Logger on Bottom	7:00 A.M.
Maximum Recorded Temperature	121F
Equipment Number	4854
Location	HAYS, KANSAS
Recorded By	JEFF LUEBBERS
Witnessed By	KEVIN KESSLER

<<< Fold Here >>>

All interpretations are opinions based on inferences from electrical or other measurements and we cannot and do not guarantee the accuracy or correctness of any interpretation, and we shall not, except in the case of gross or willful negligence on our part, be liable or responsible for any loss, costs, damages, or expenses incurred or sustained by anyone resulting from any interpretation made by any of our officers, agents or employees. These interpretations are also subject to our general terms and conditions set out in our current Price Schedule.

Comments

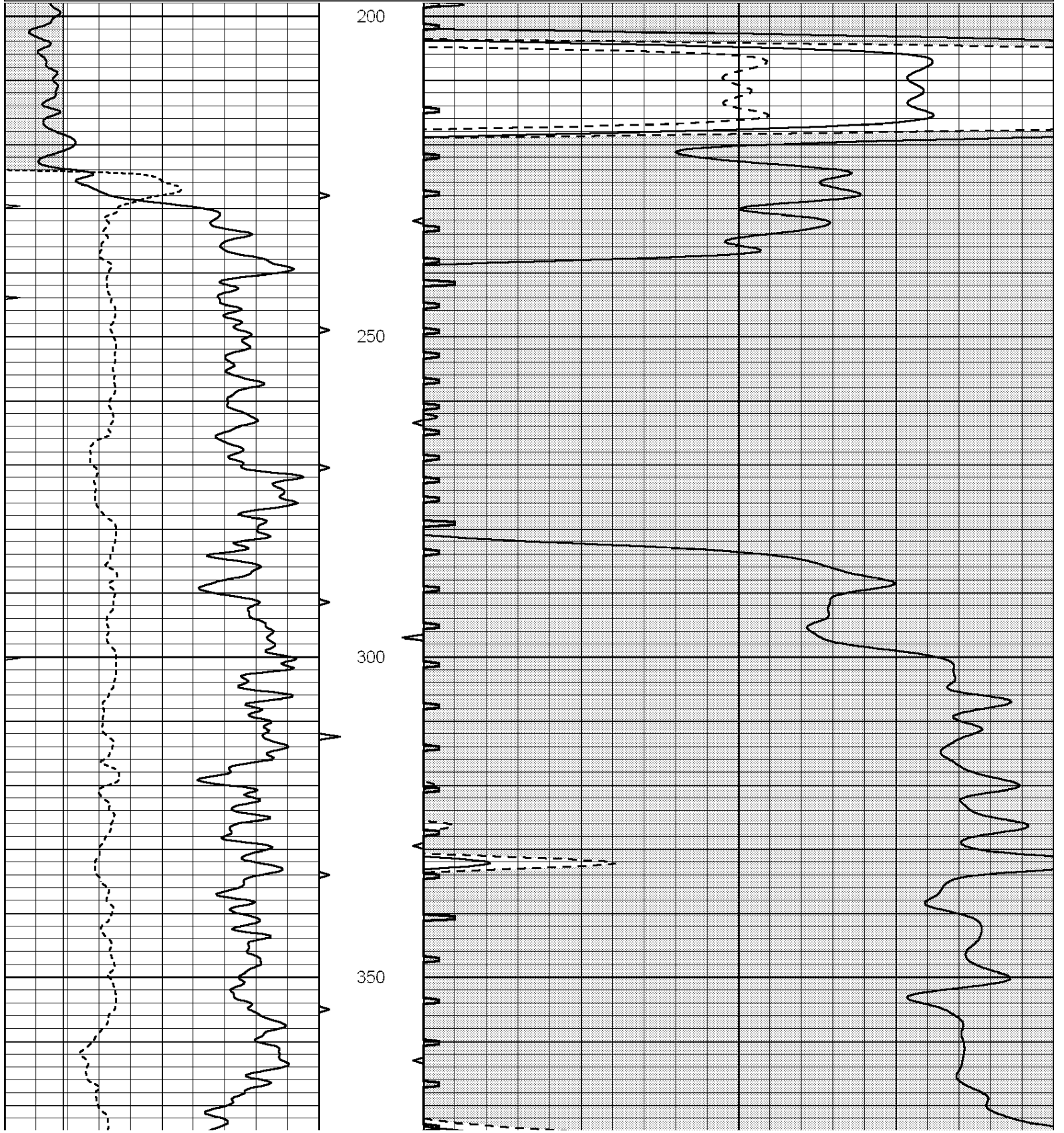
THANK YOU FOR USING "NABORS" HAYS, KANSAS (785)B 628-6395
DIRECTIONS
RANSON, KS. E. TO (HWY 4 & 283) 3N. TO "RD. 285", 1/2E., S. INTO

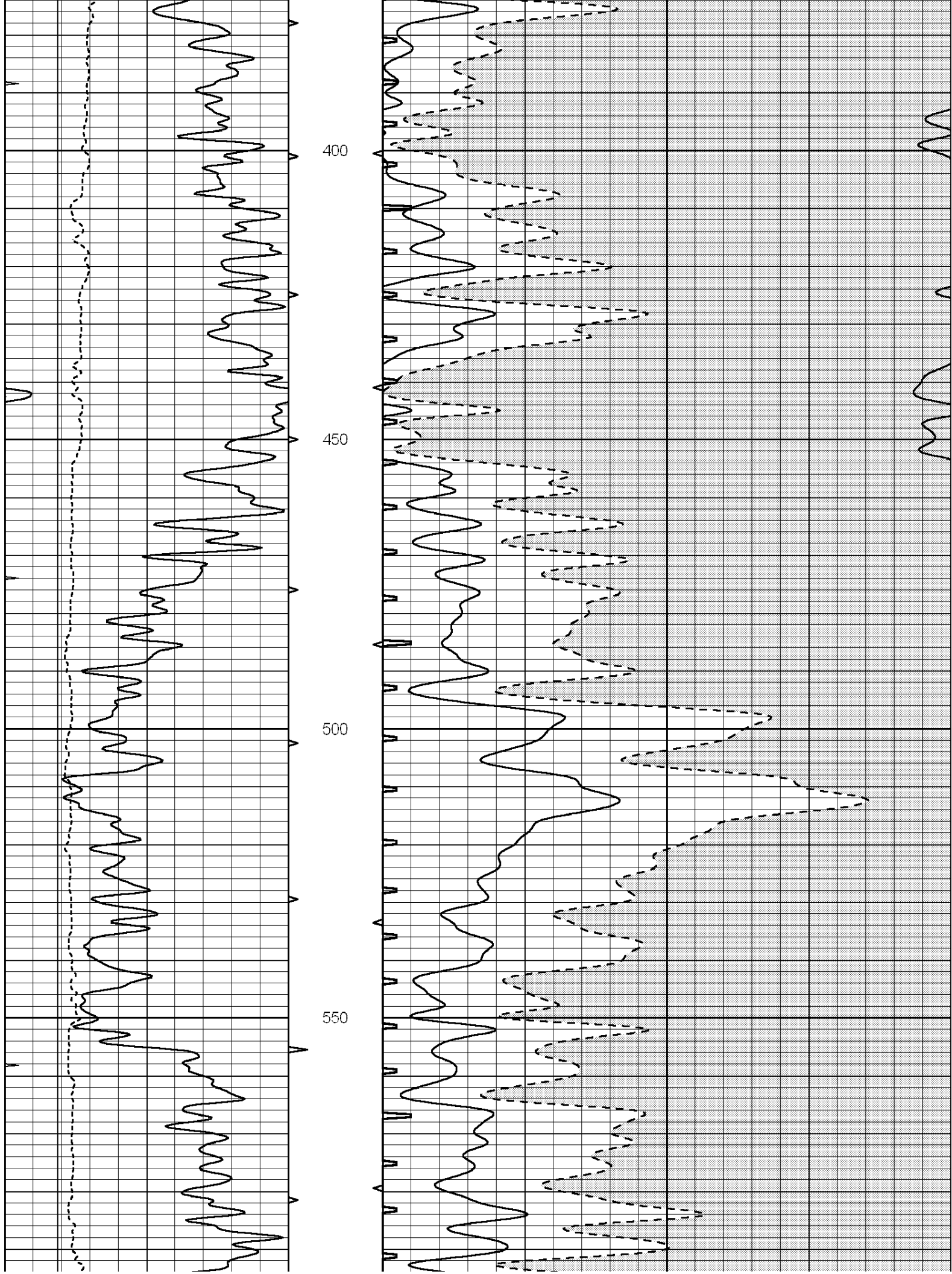


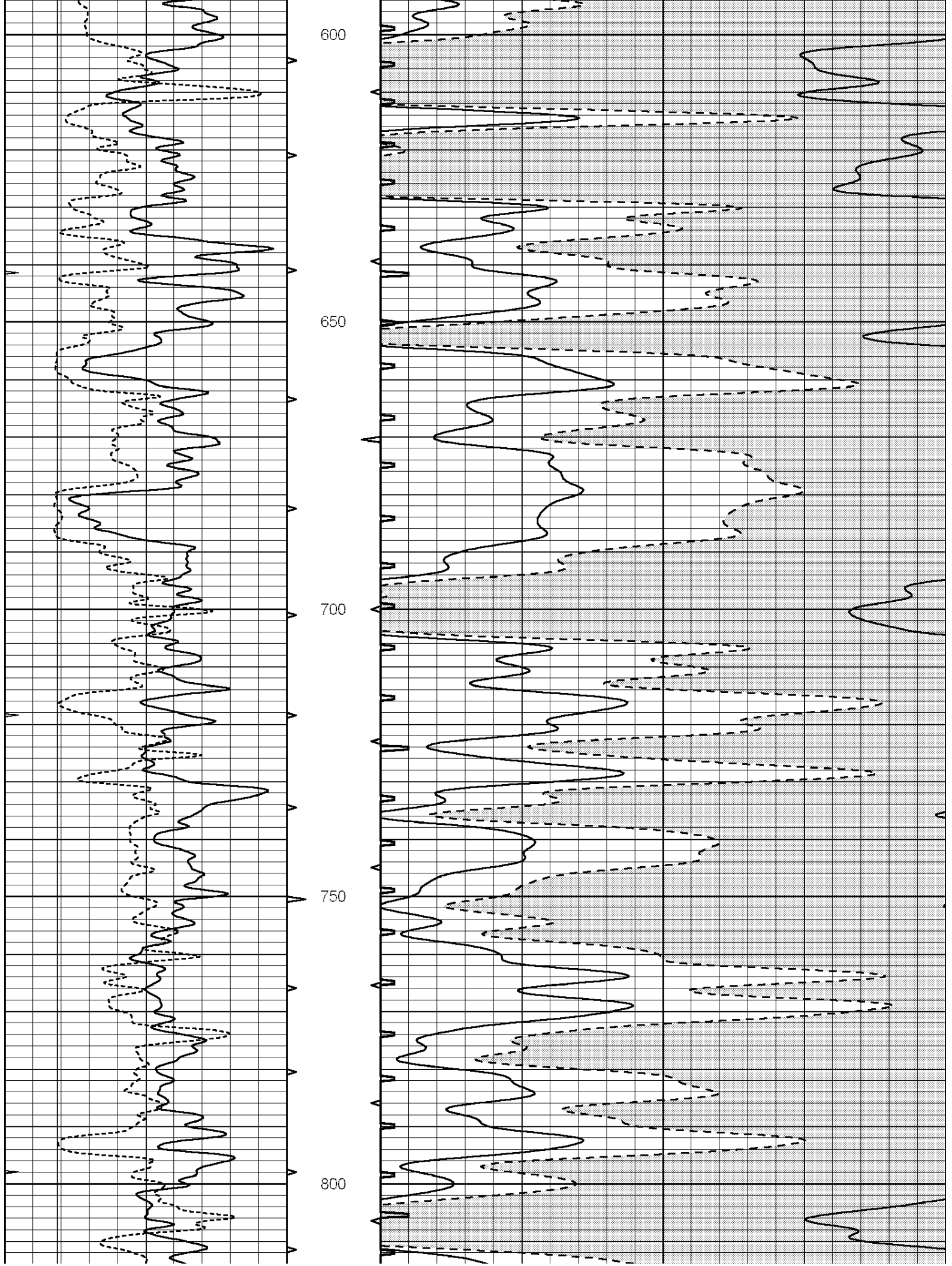
MAIN SECTION

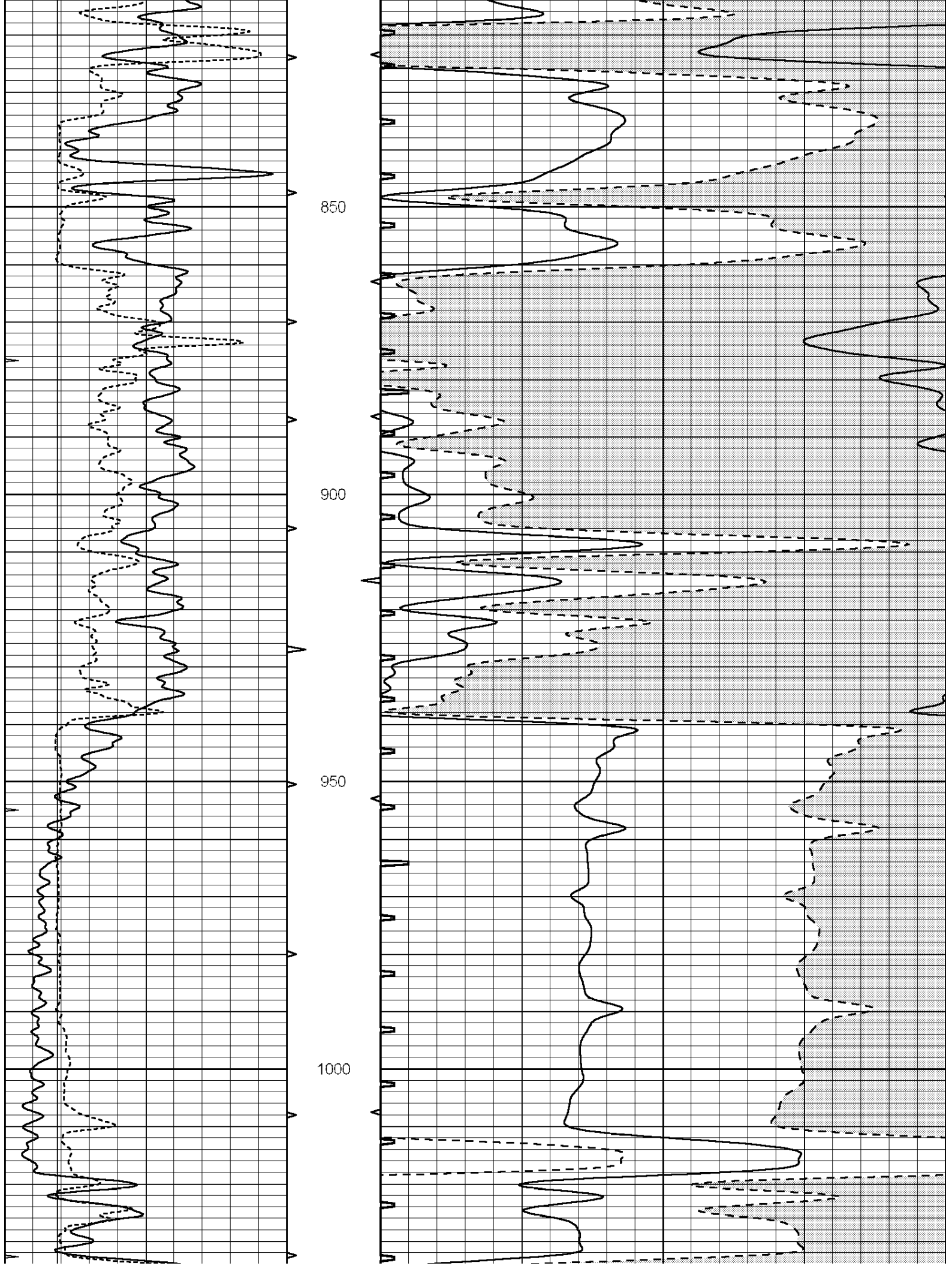
Database File: 010748pe.db
 Dataset Pathname: pass6.6
 Presentation Format: slt
 Dataset Creation: Wed May 01 10:42:27 2013
 Charted by: Depth in Feet scaled 1:240

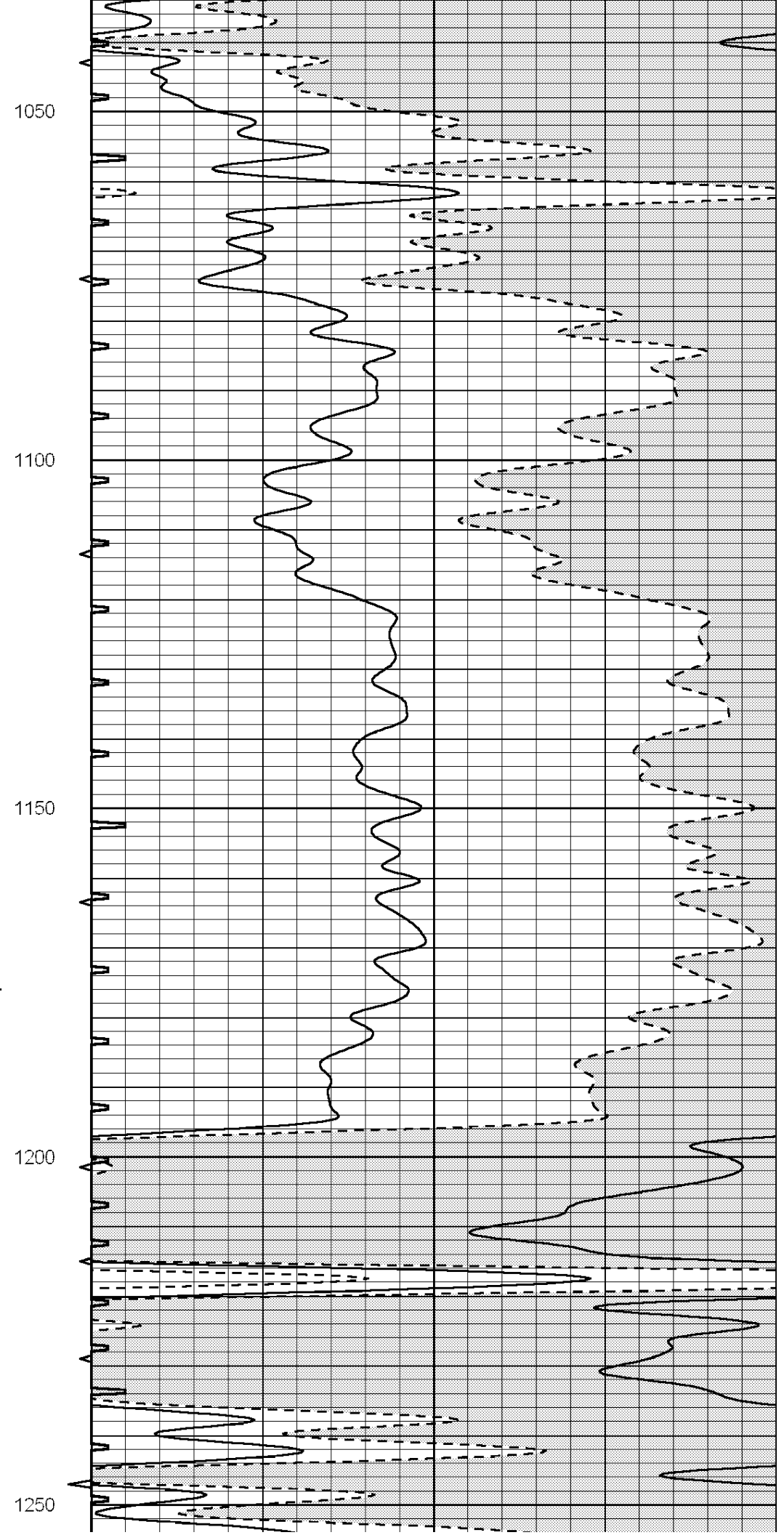
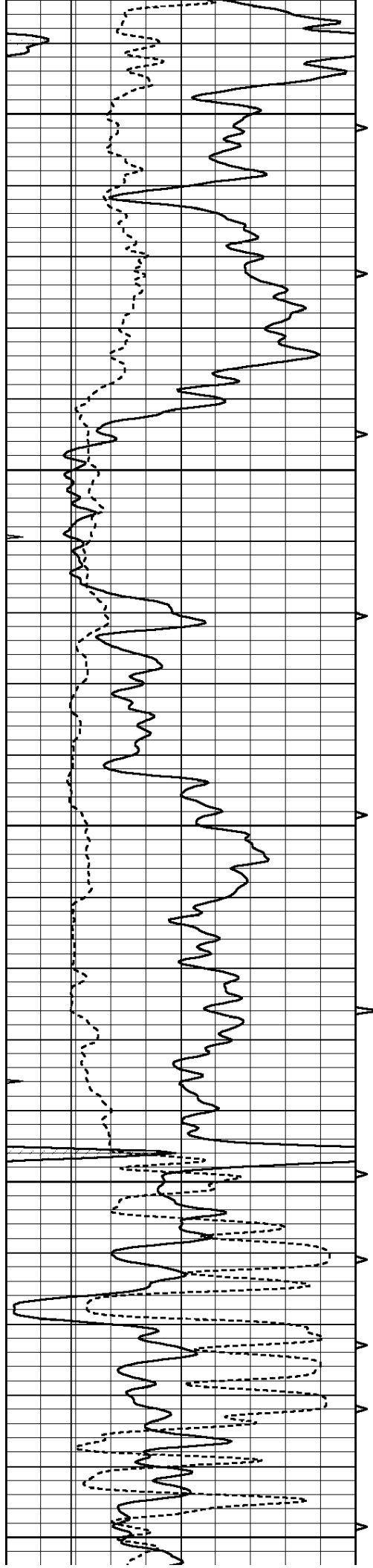
0	GAMMA RAY (GAPI)	150	ABHV	140	DELTA TIME (usec/ft)	40
6	CALIPER (in)	16	10 (ft3)	0	30	SONIC POROSITY (pu)
0	MINMK	20	TBHV	0	ITT (msec)	20
			0 (ft3)	10		

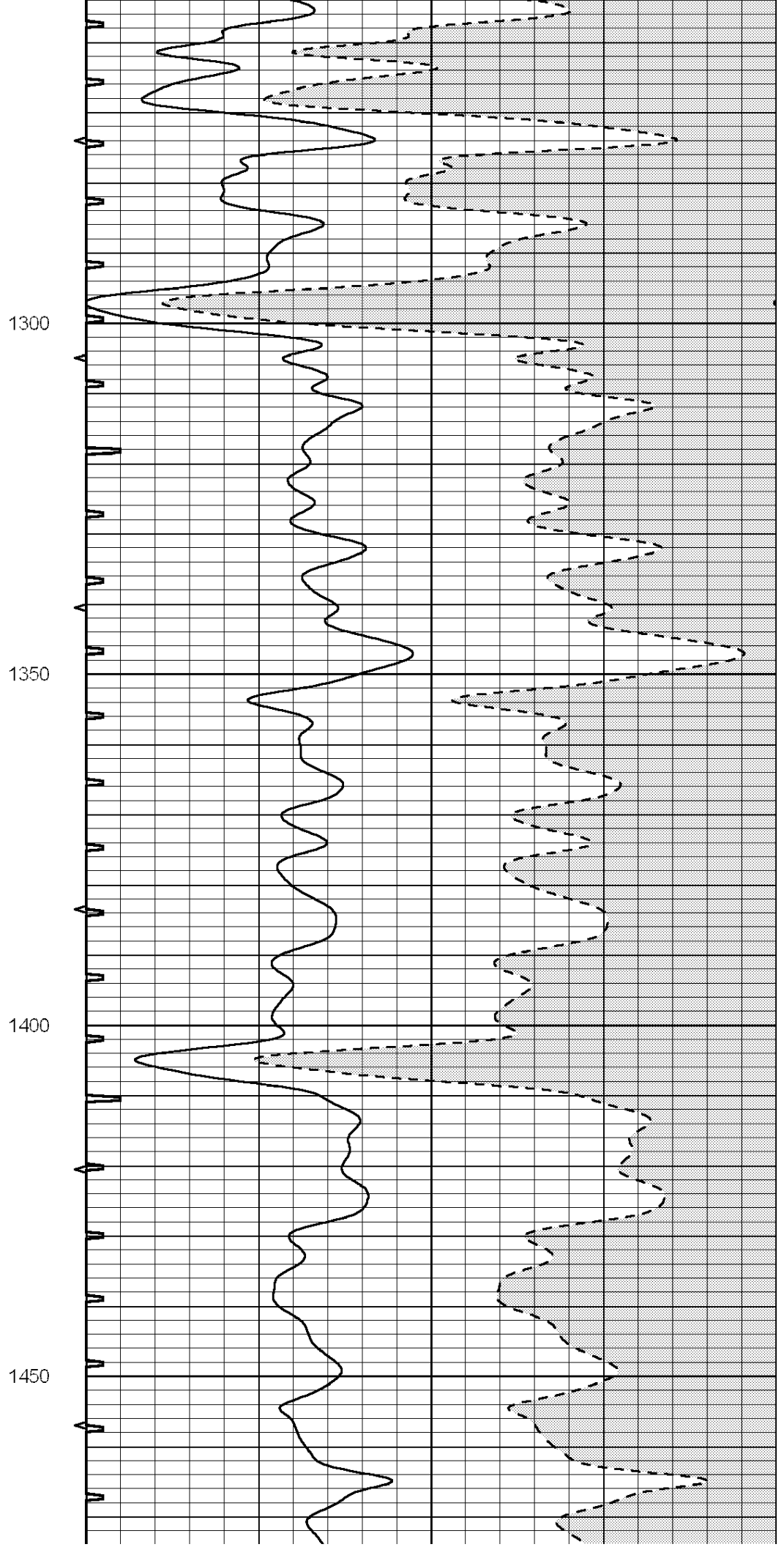
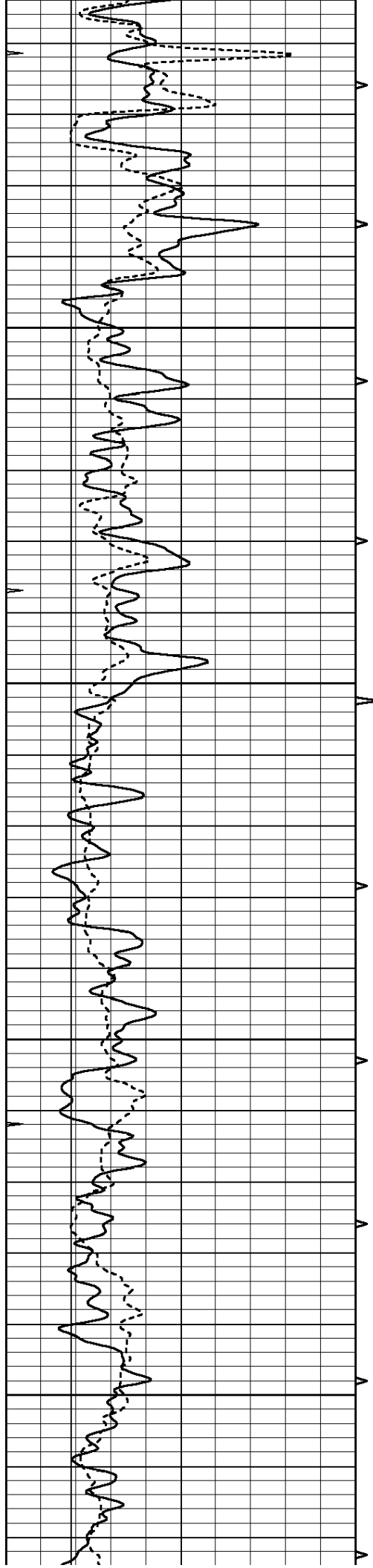


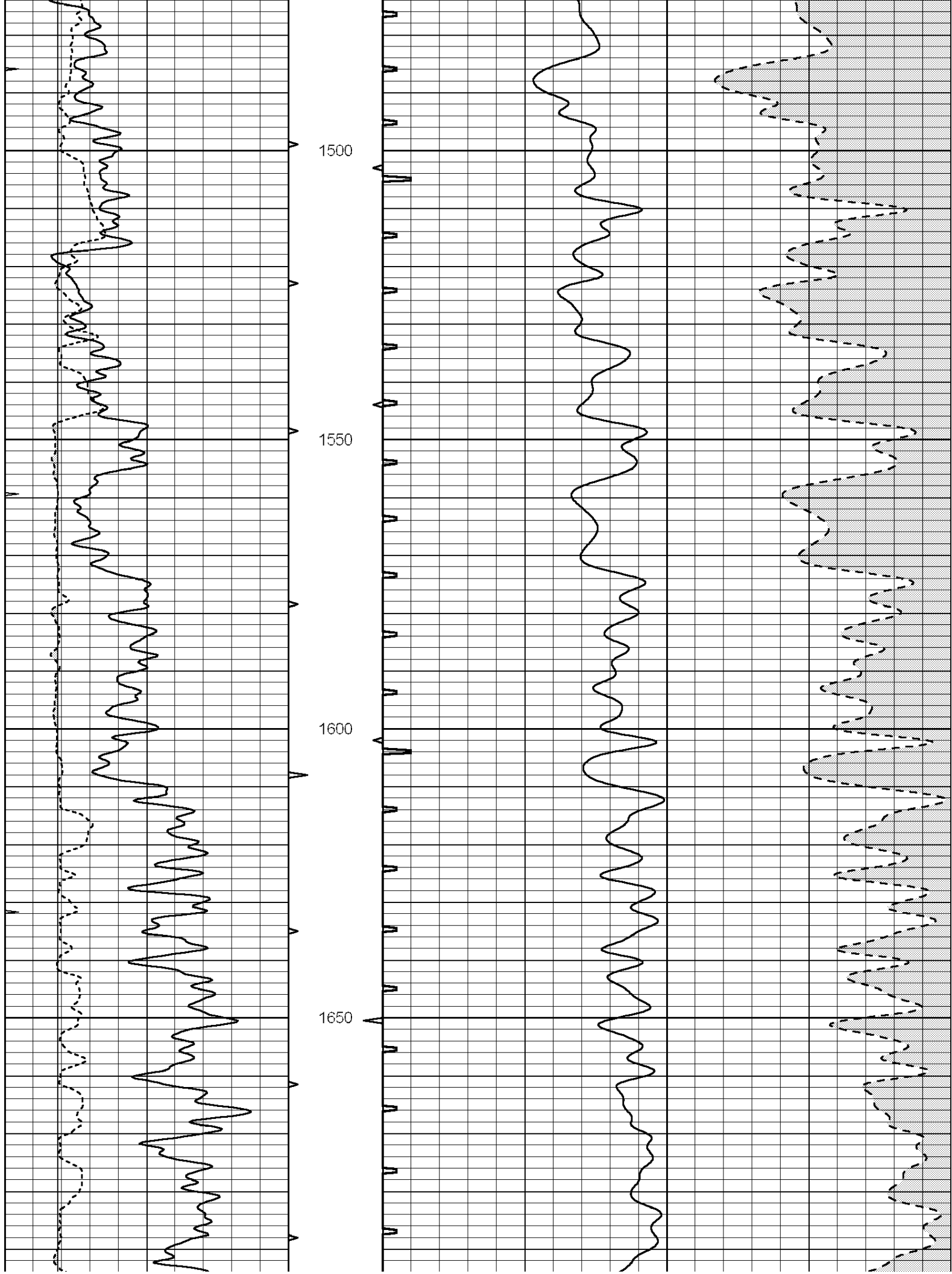


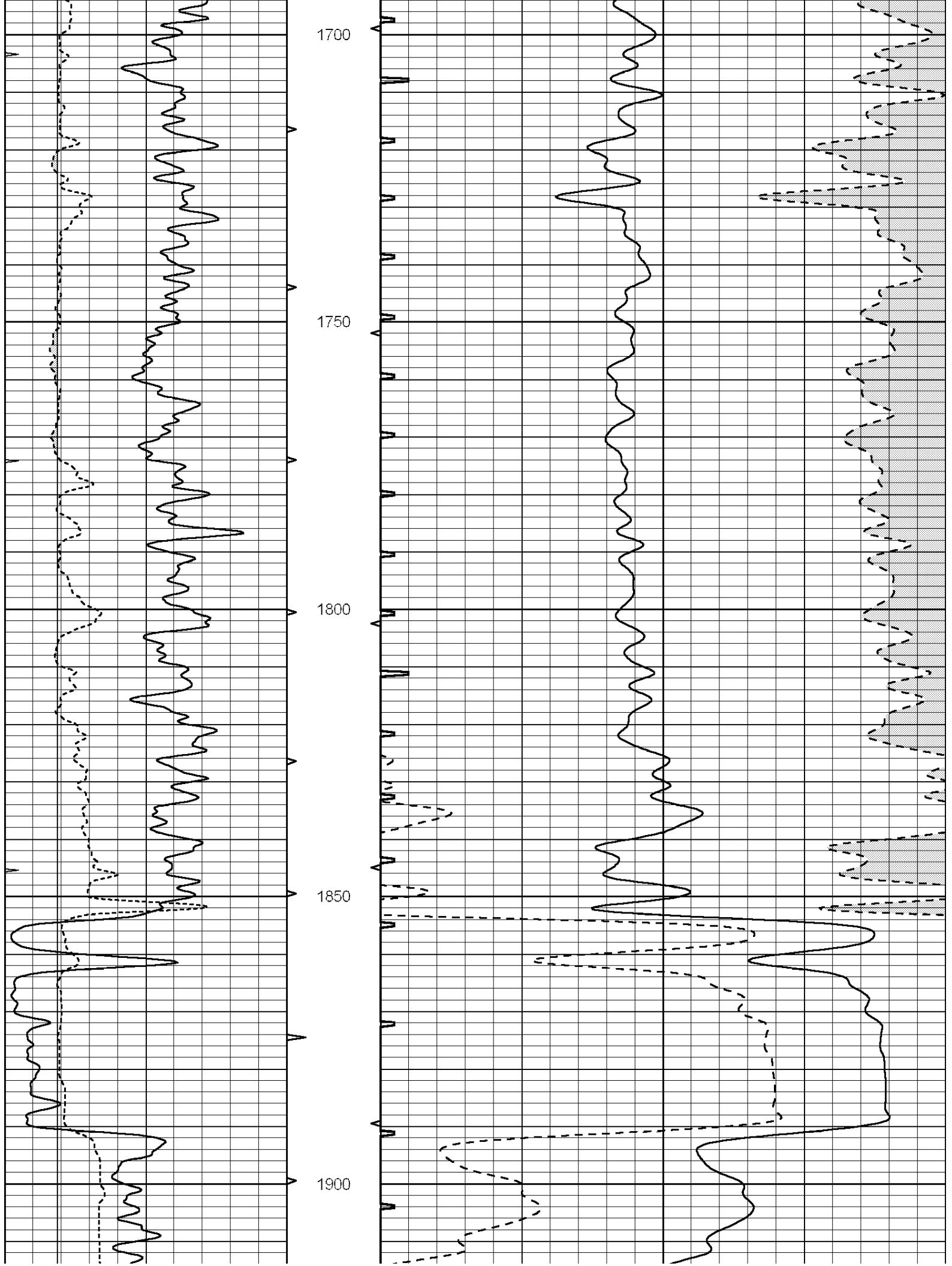


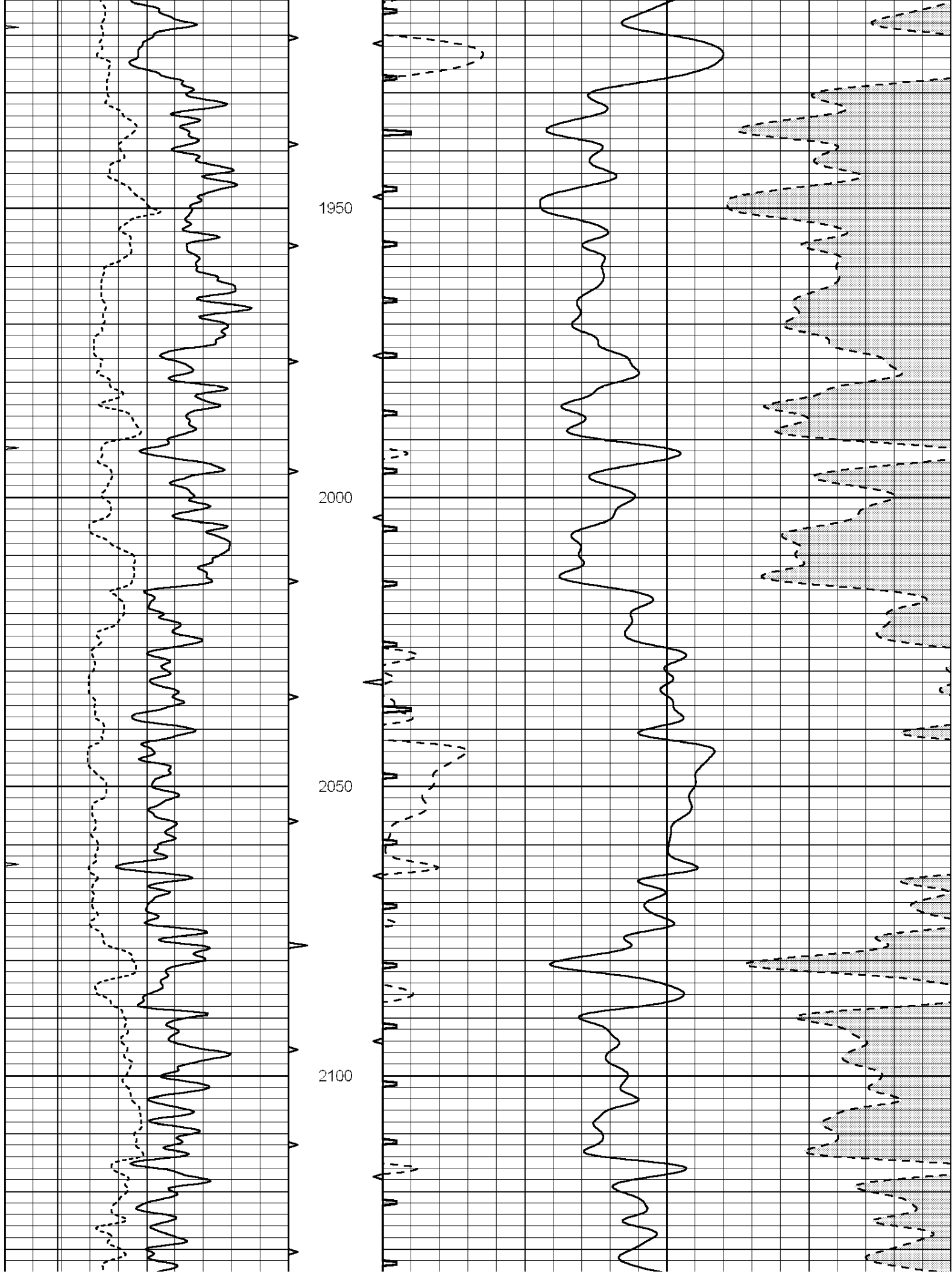


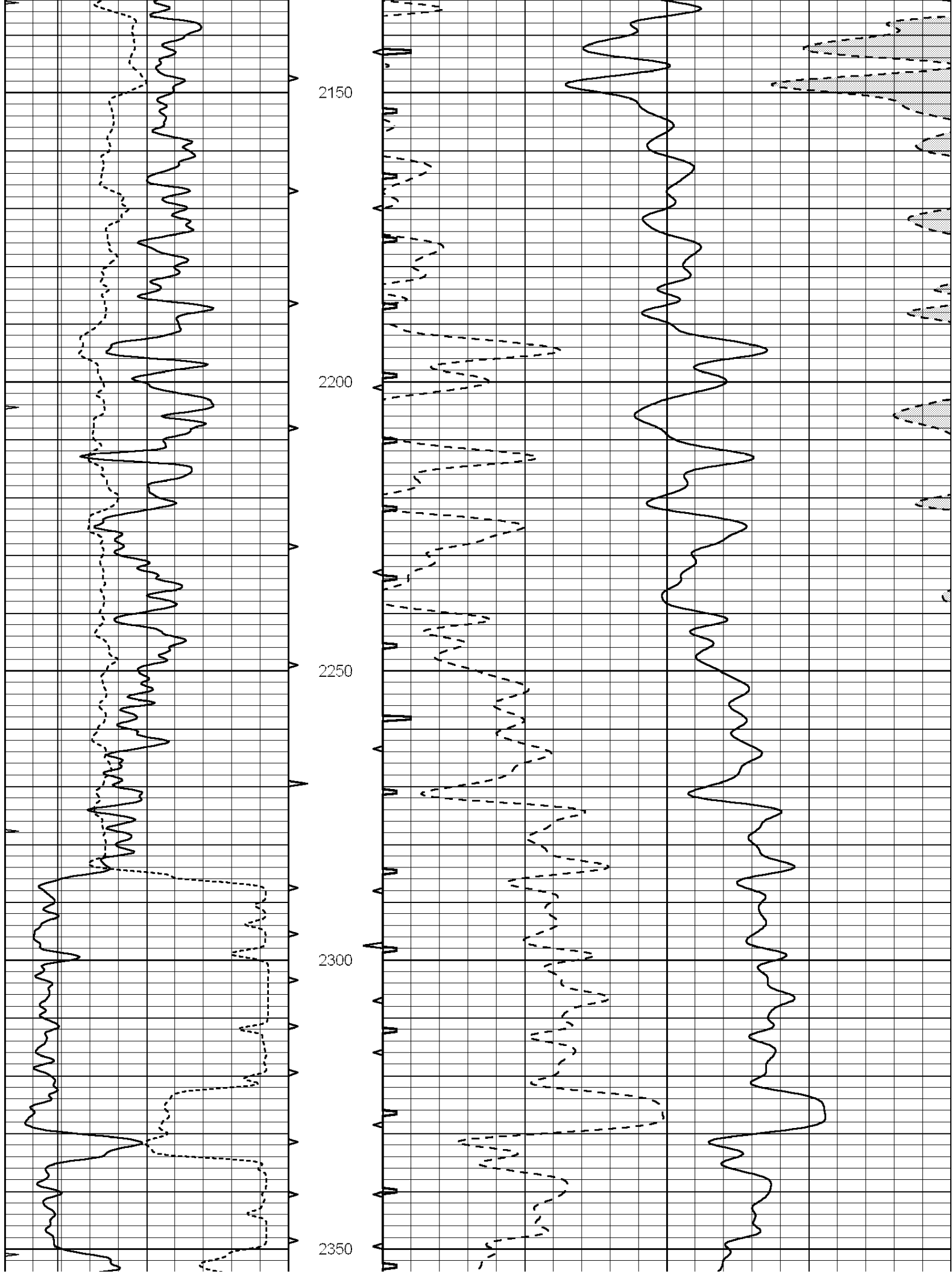


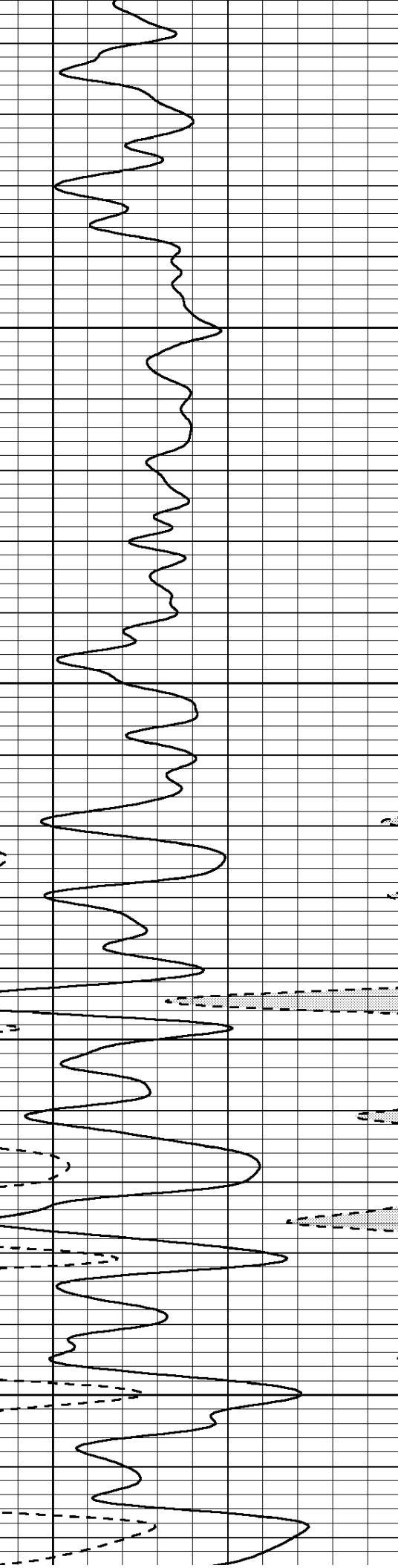
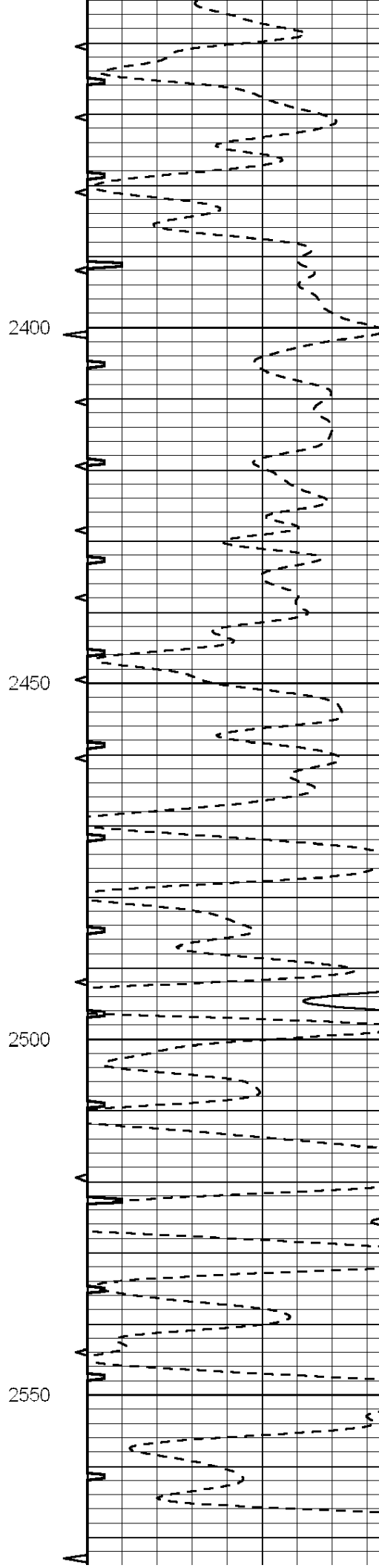
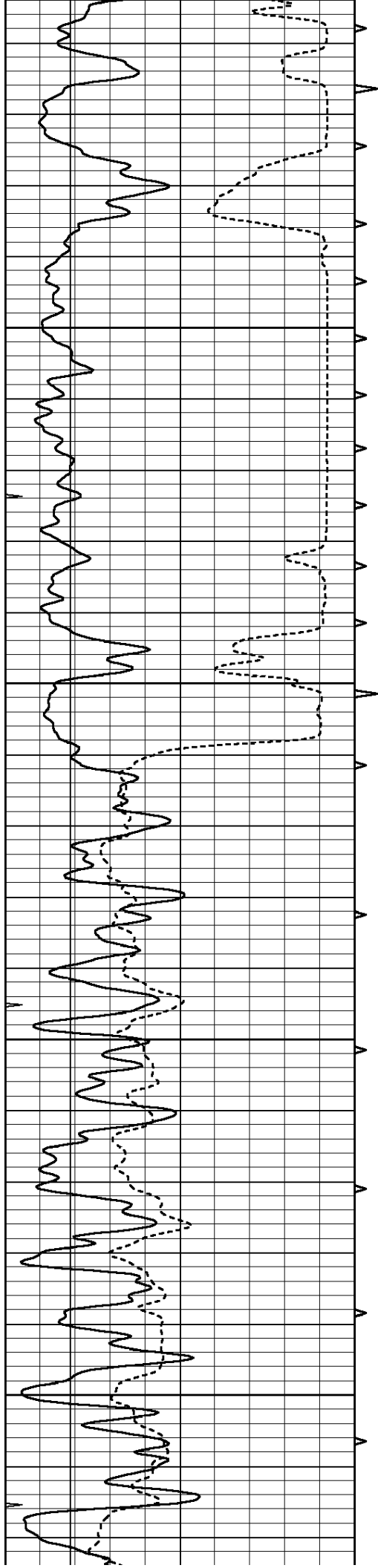


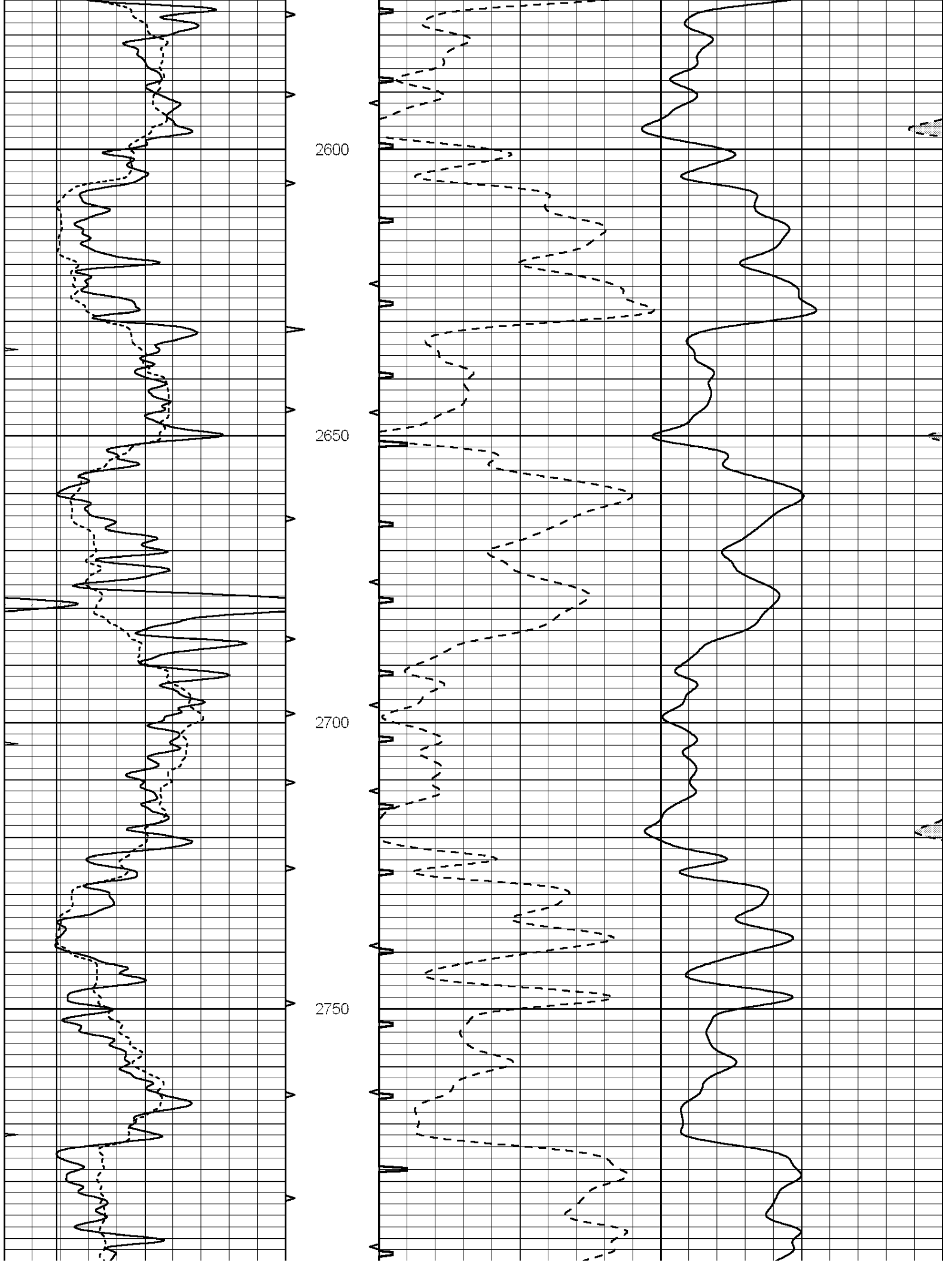


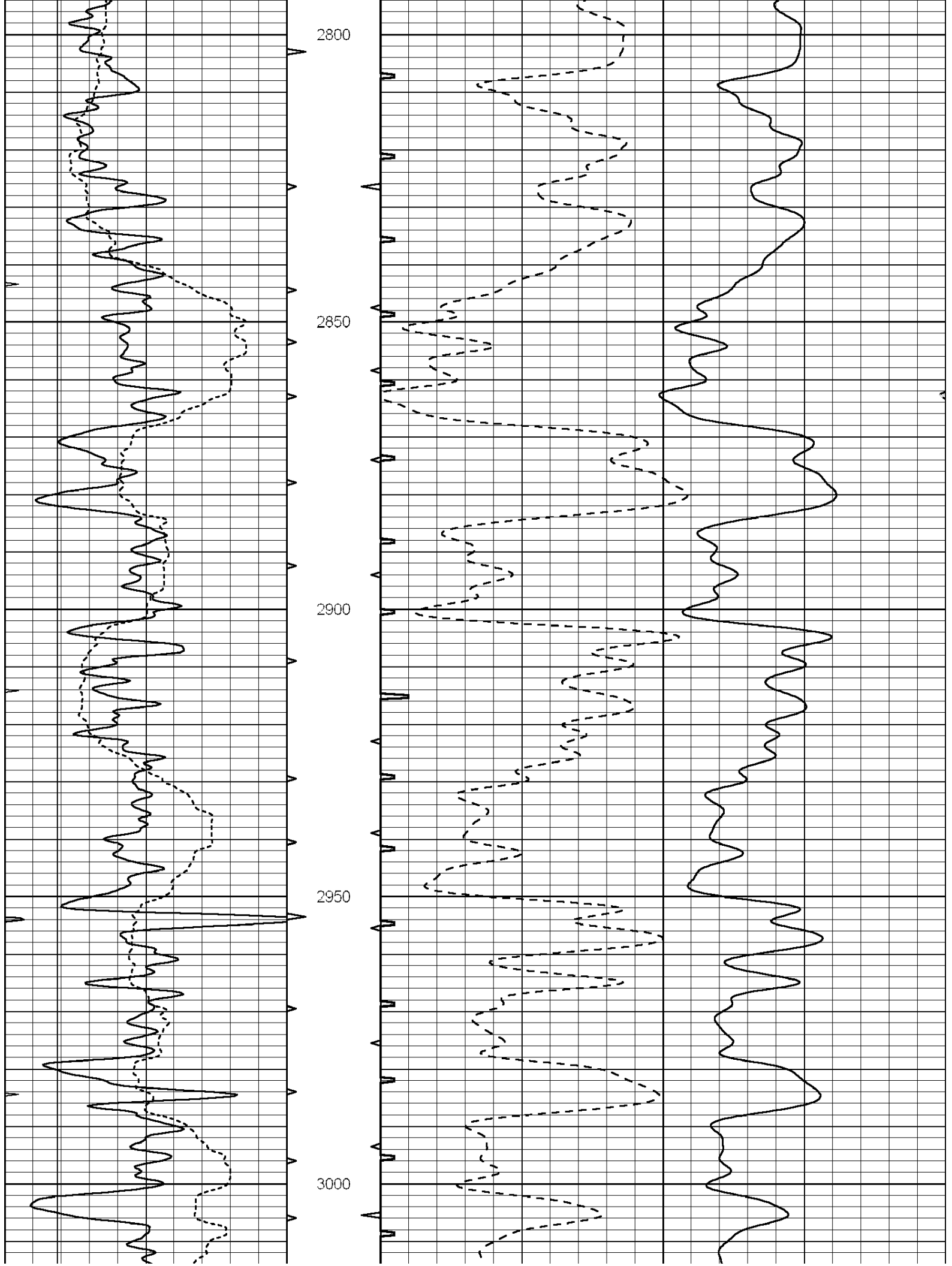


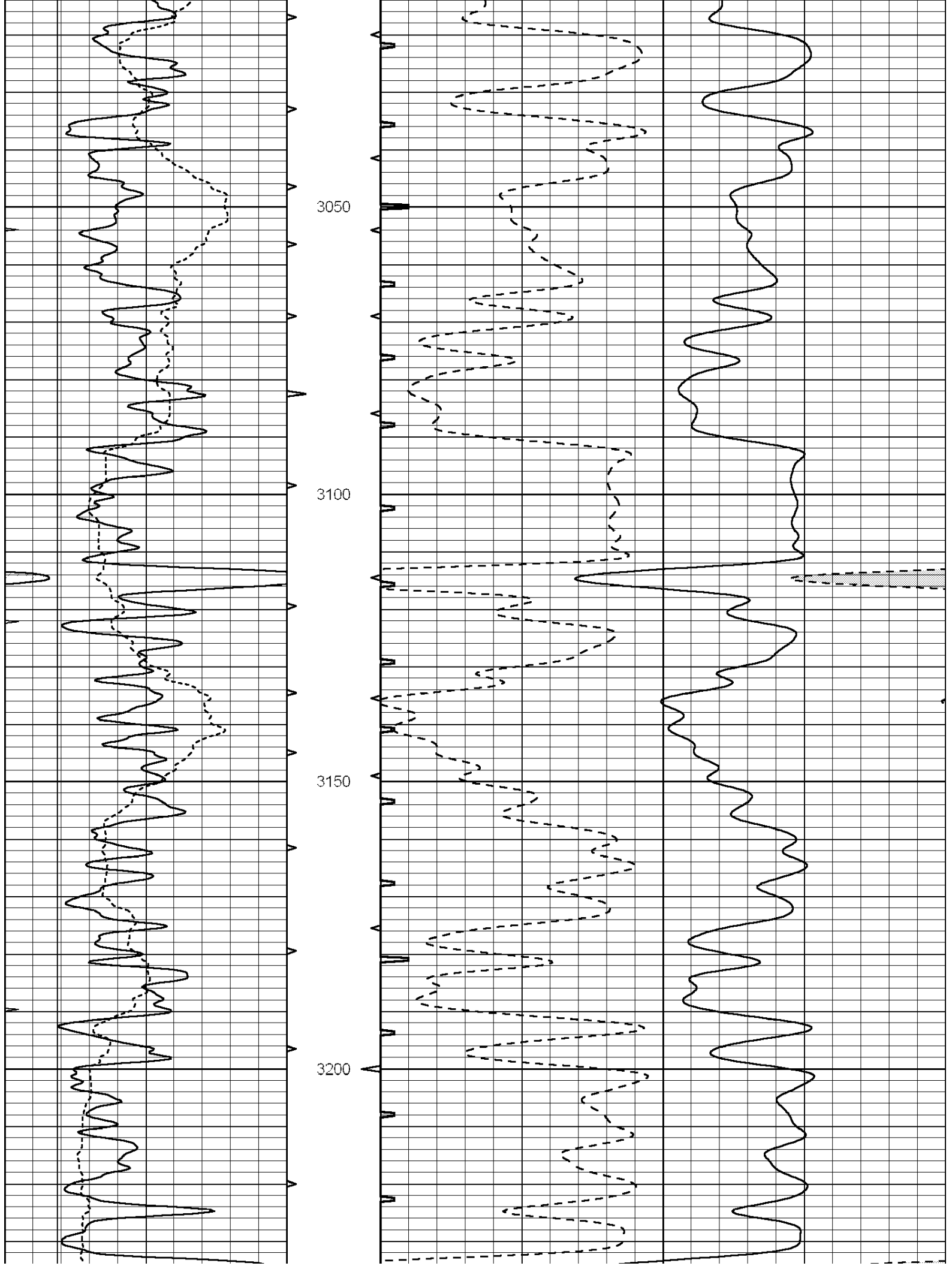


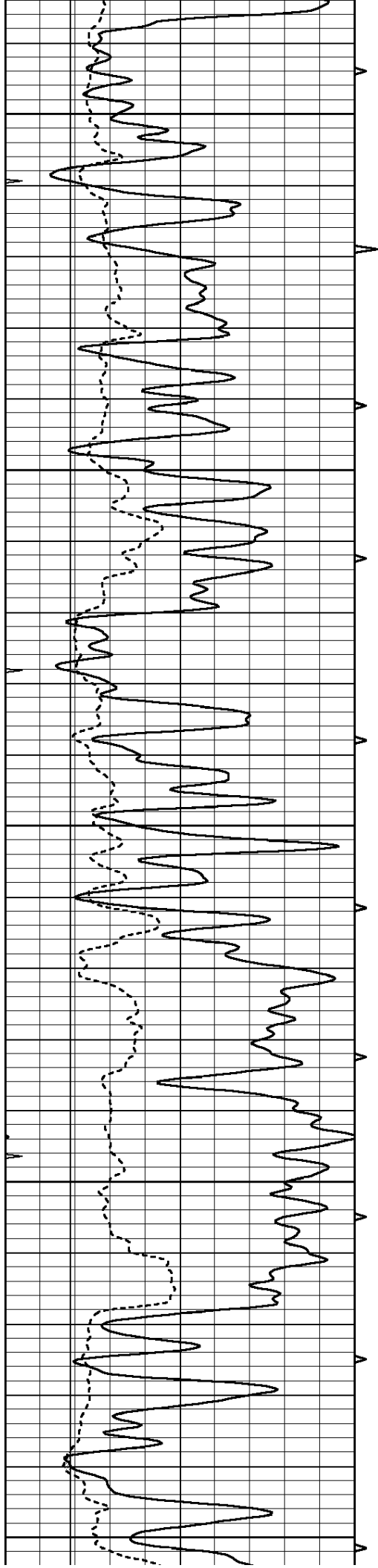












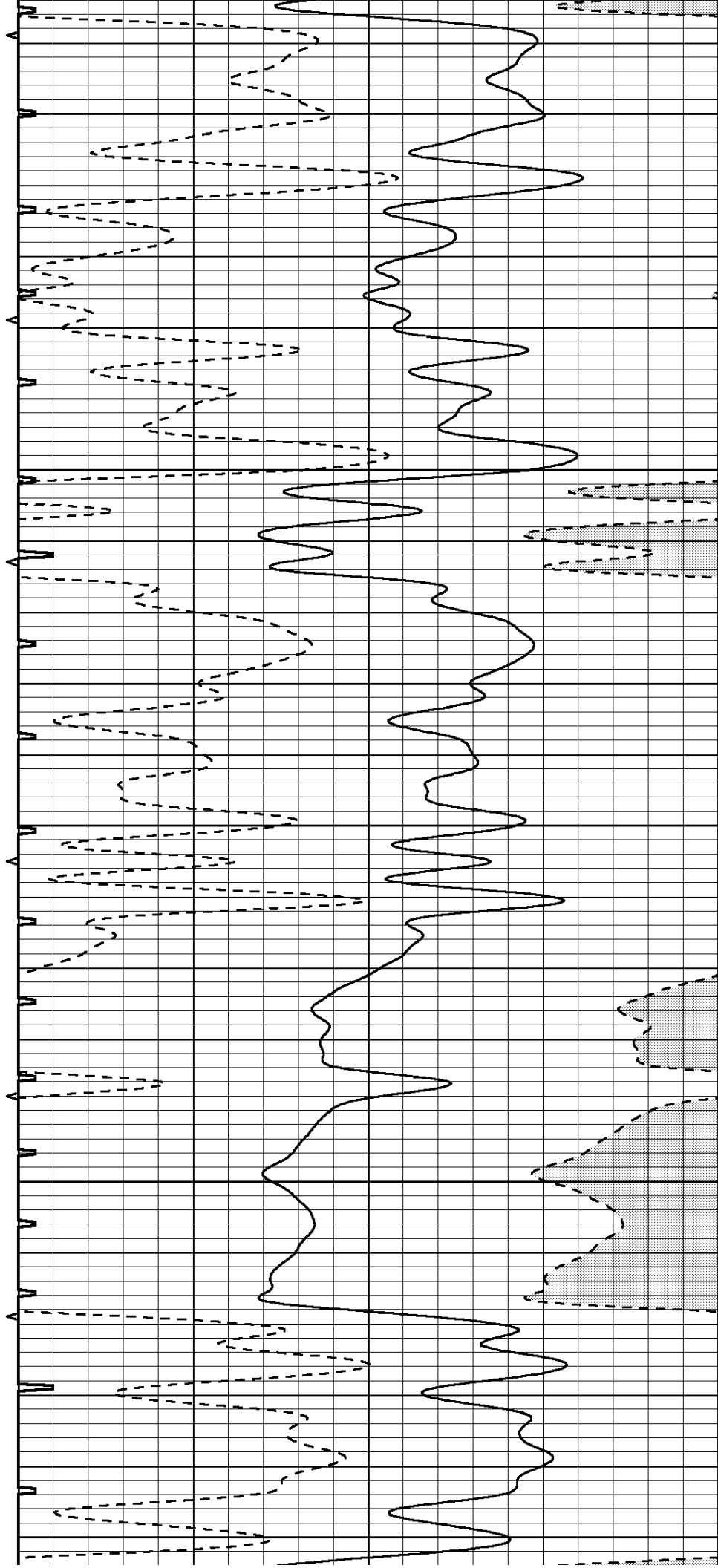
3250

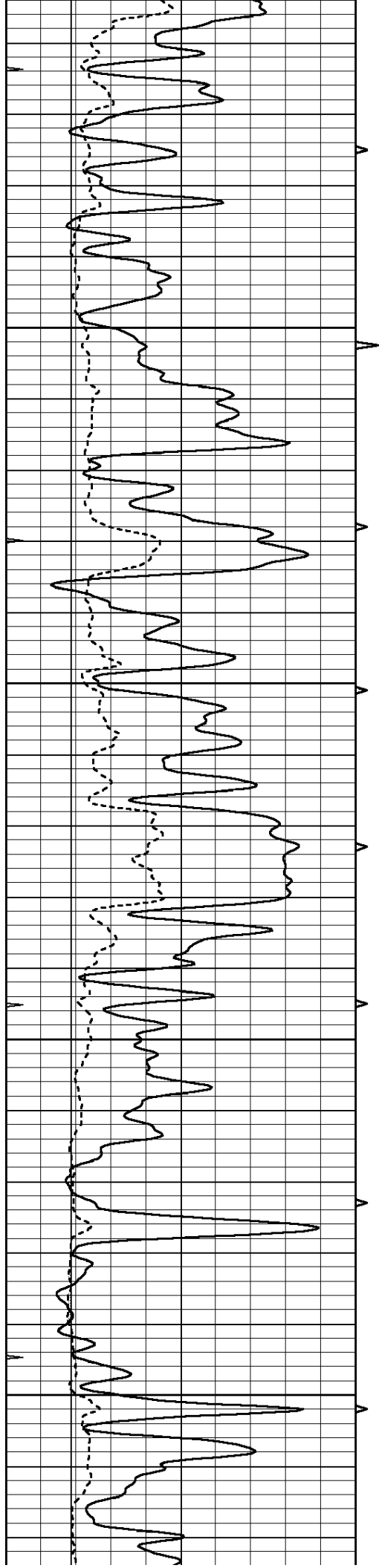
3300

3350

3400

3450



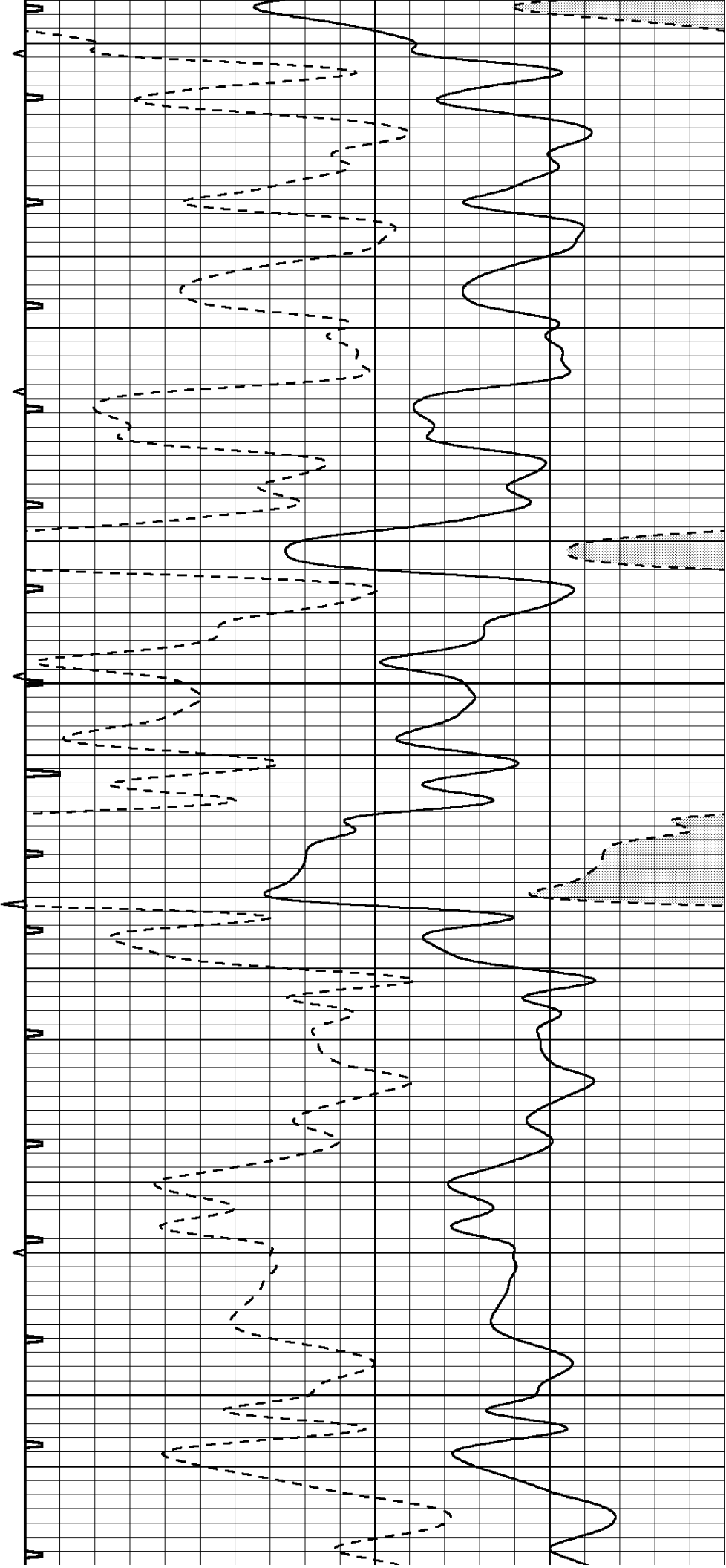


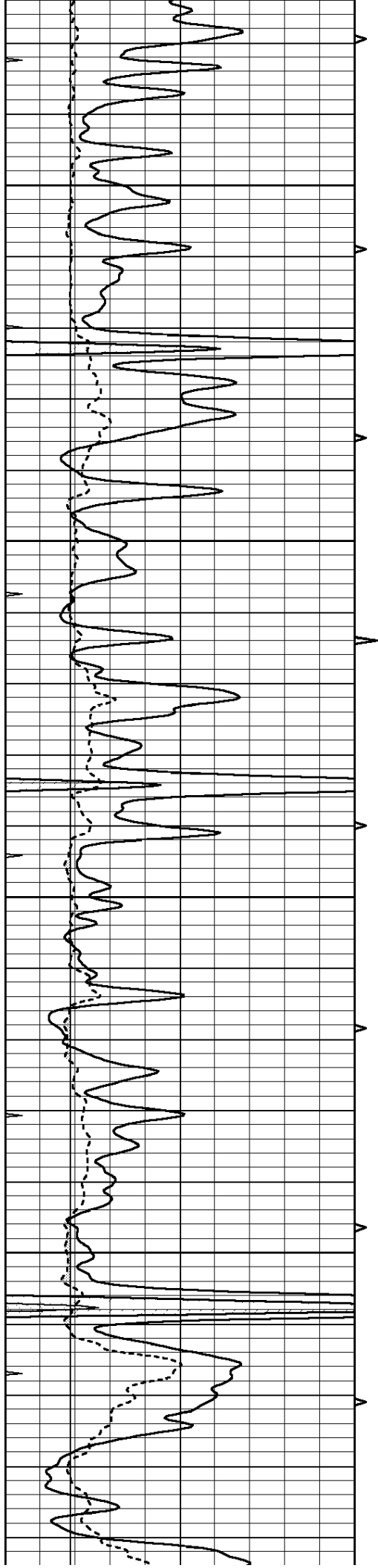
3500

3550

3600

3650



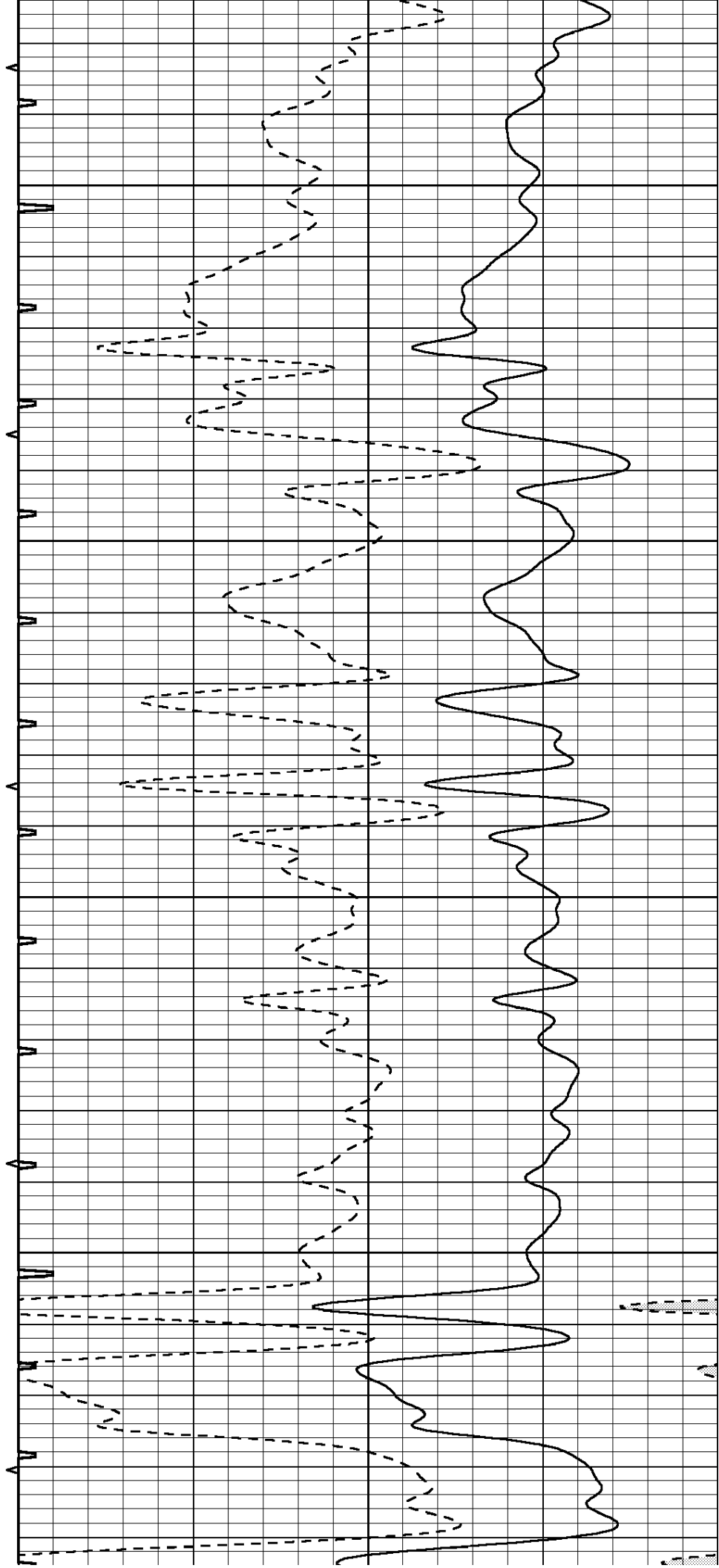


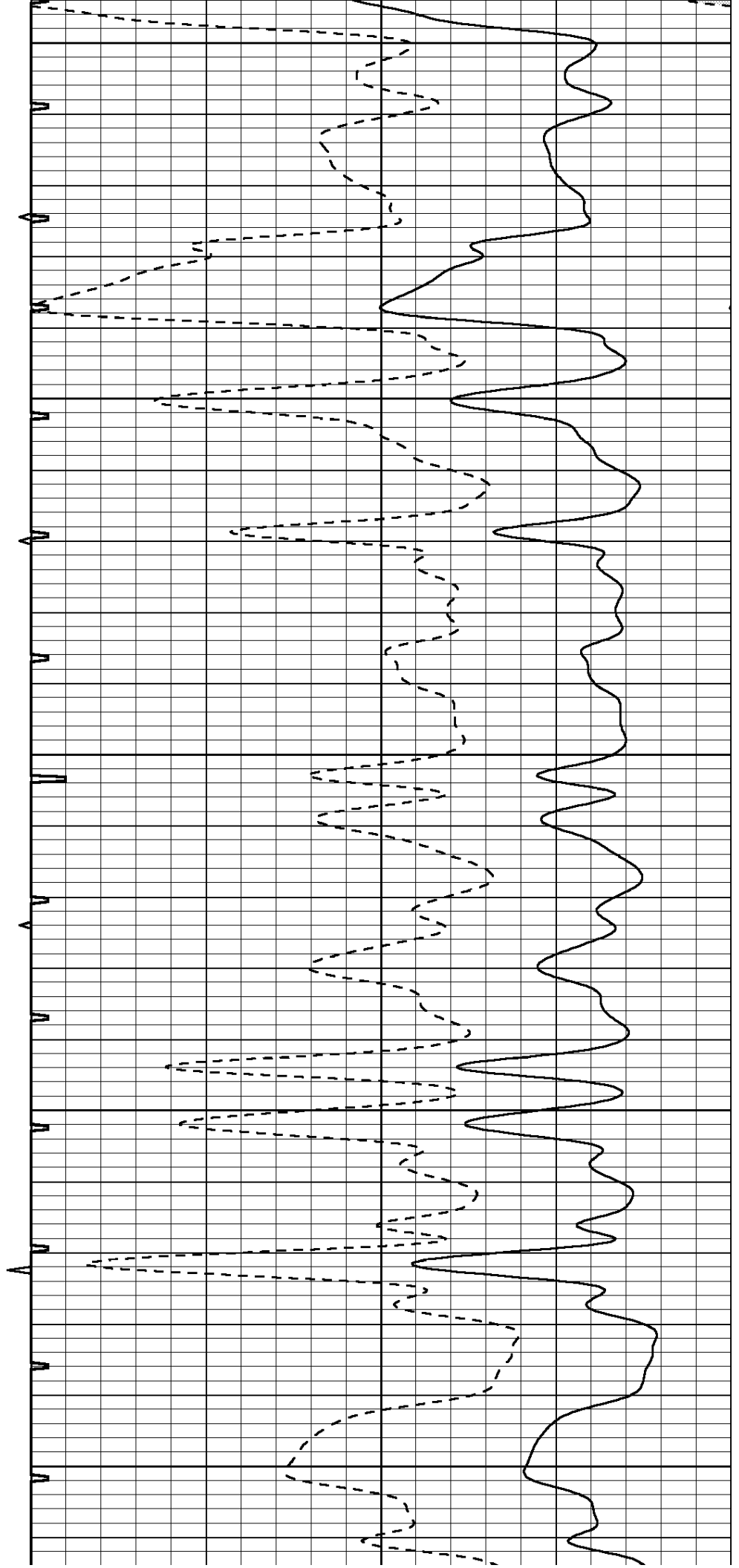
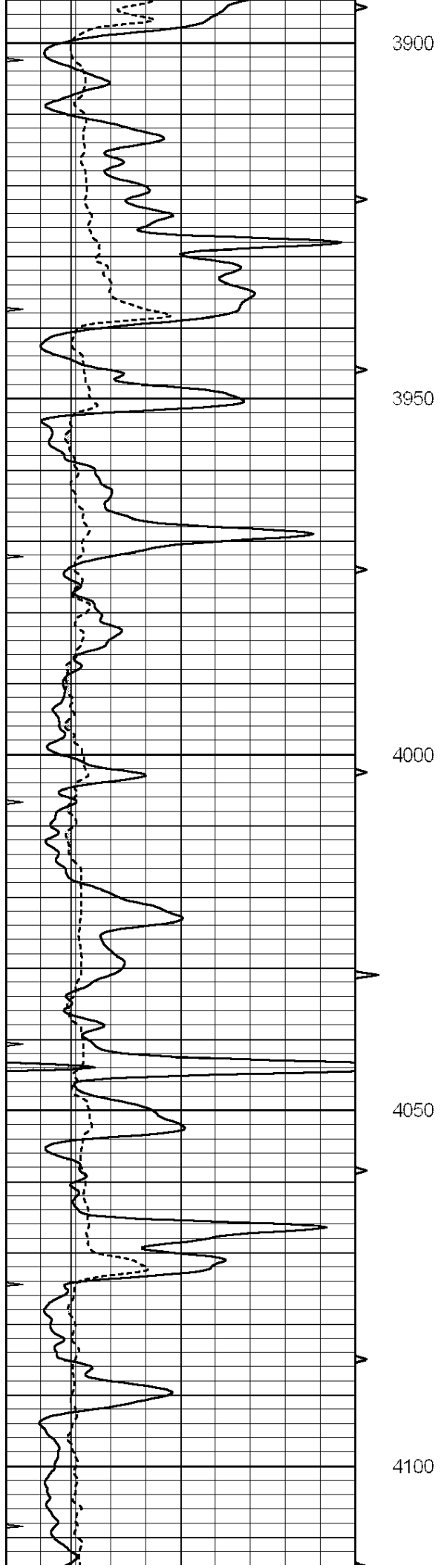
3700

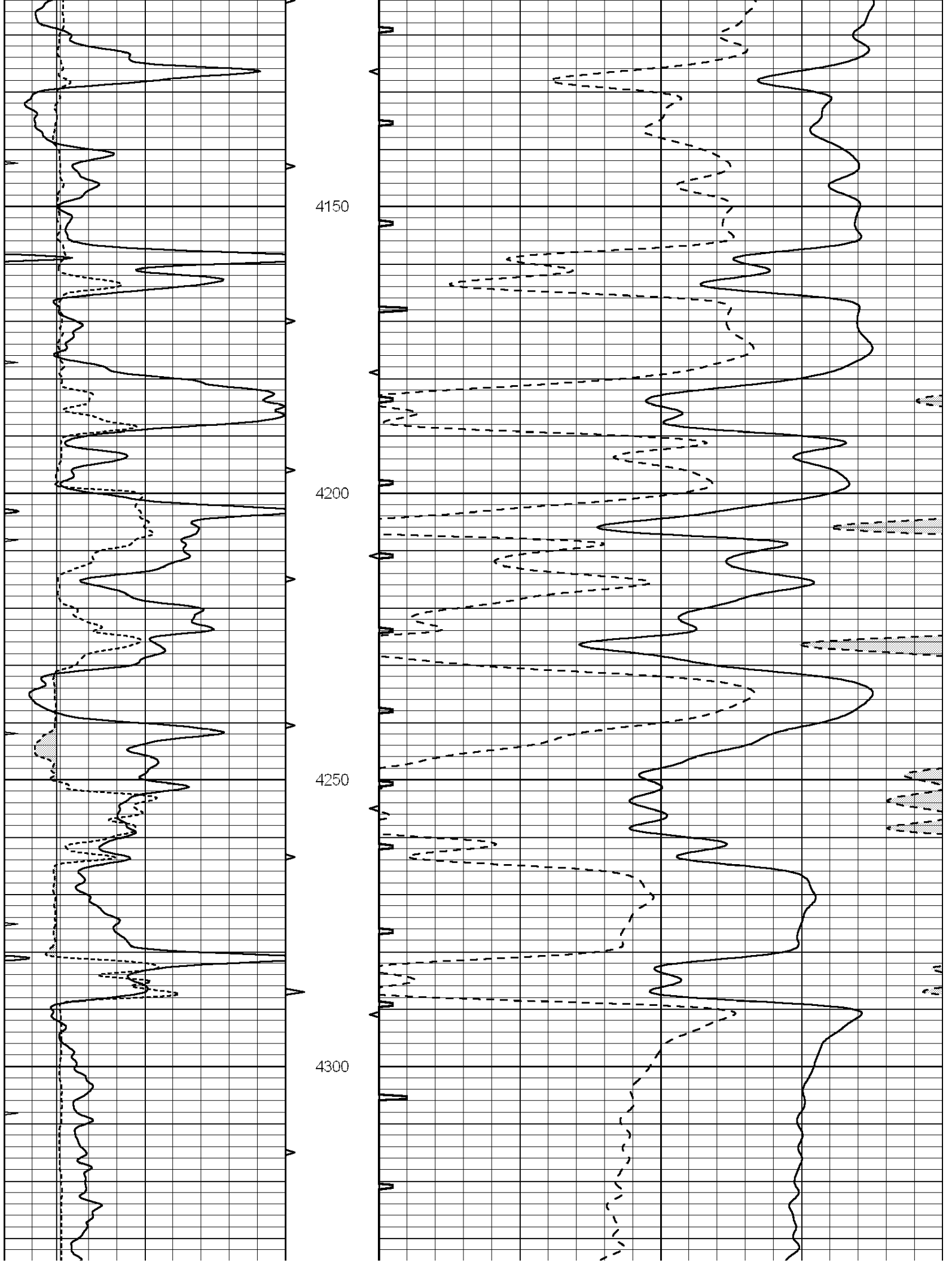
3750

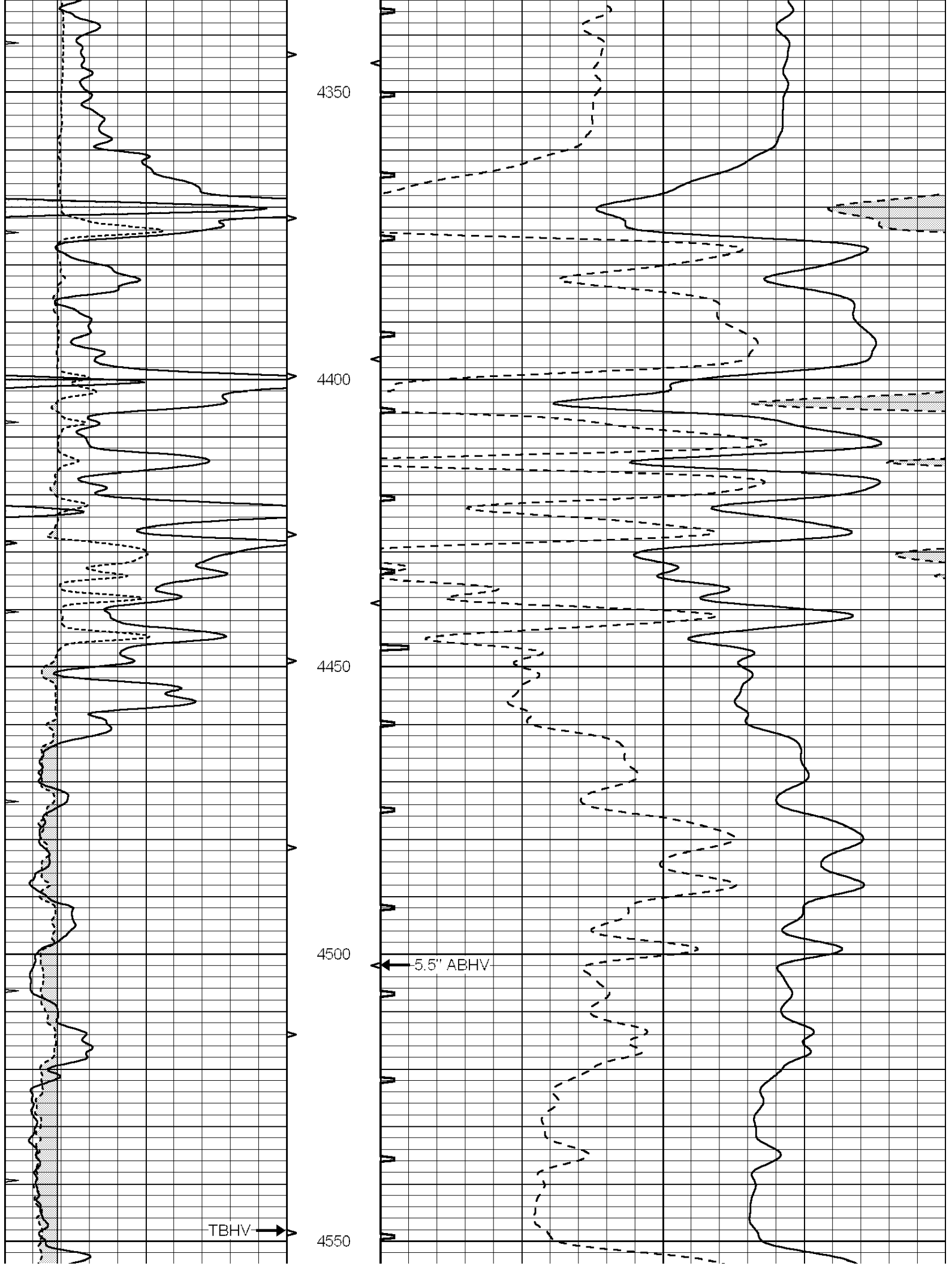
3800

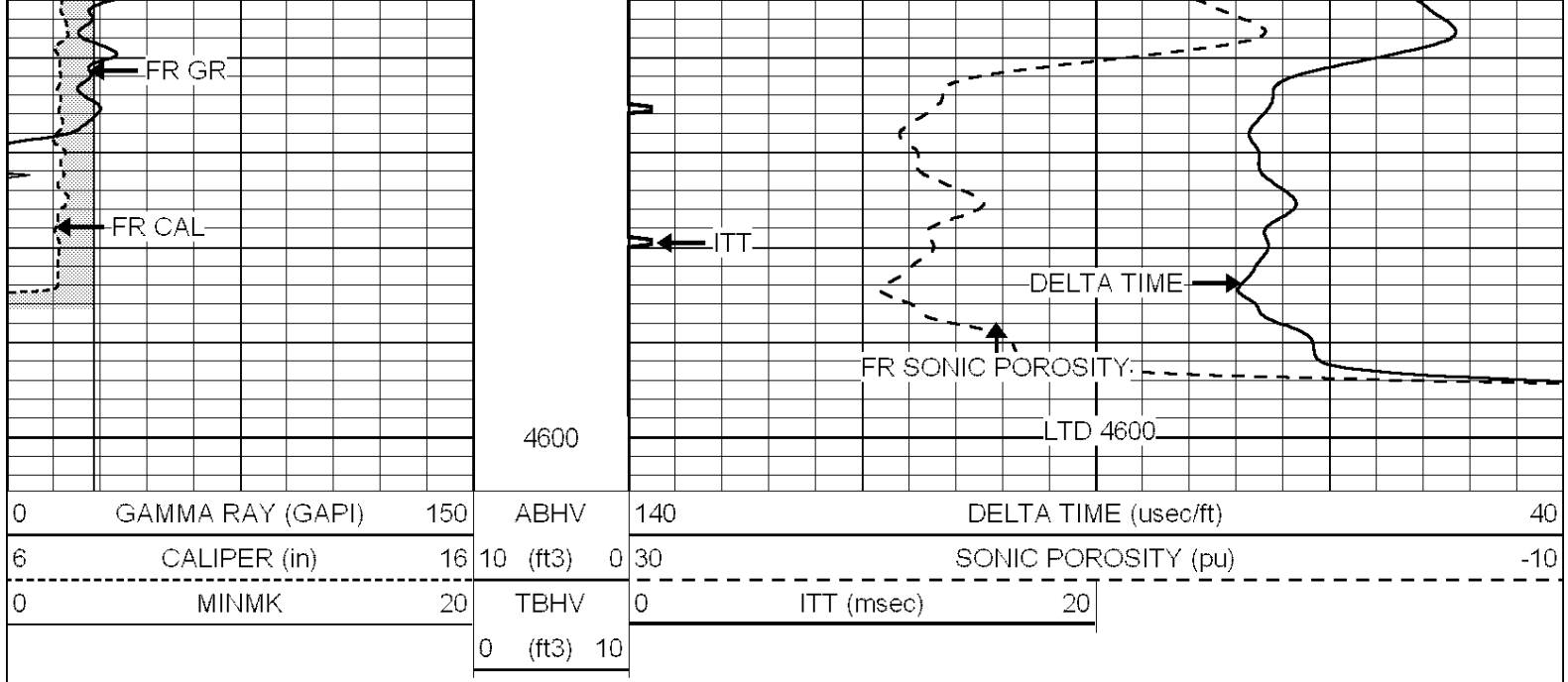
3850





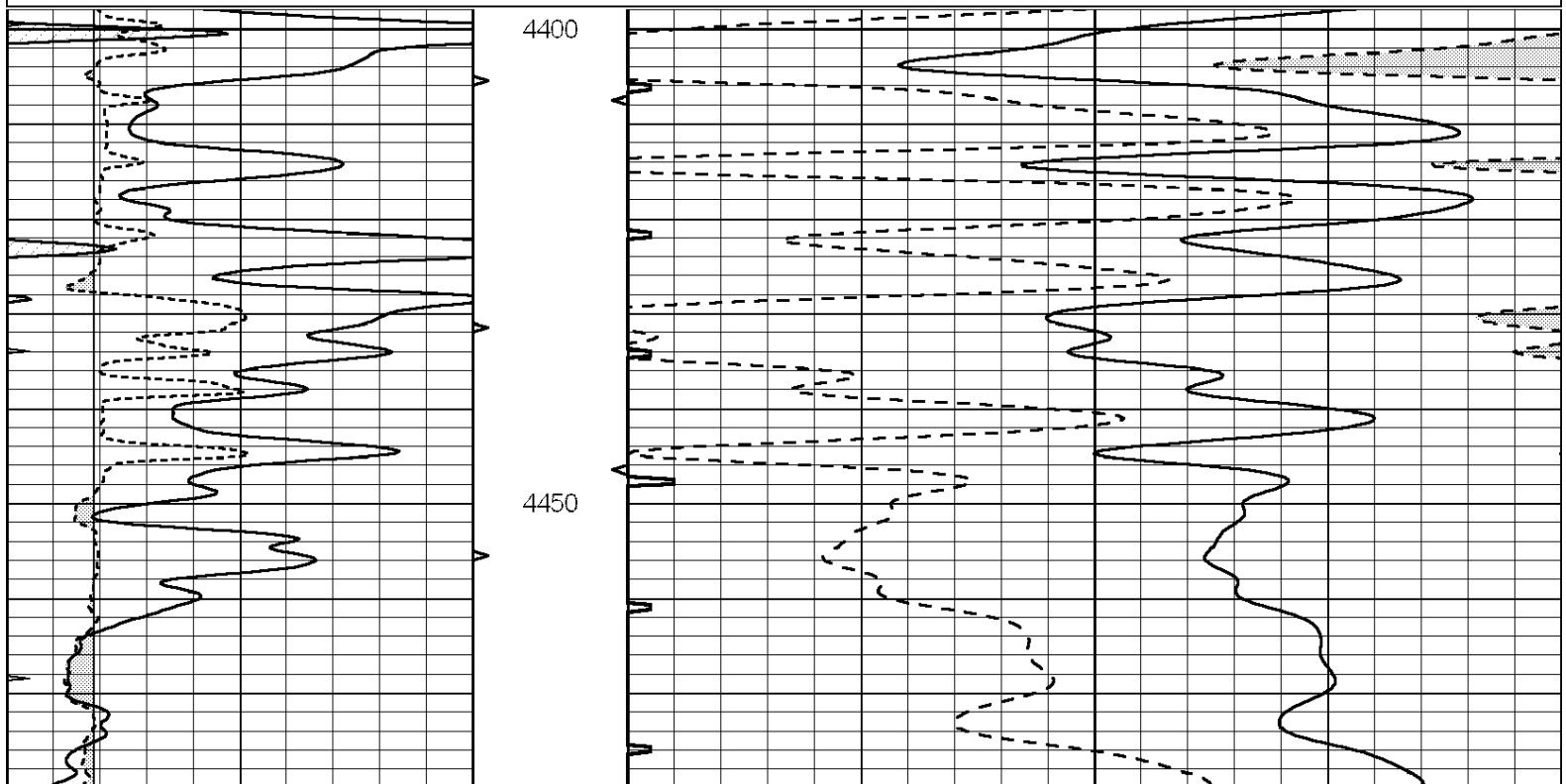
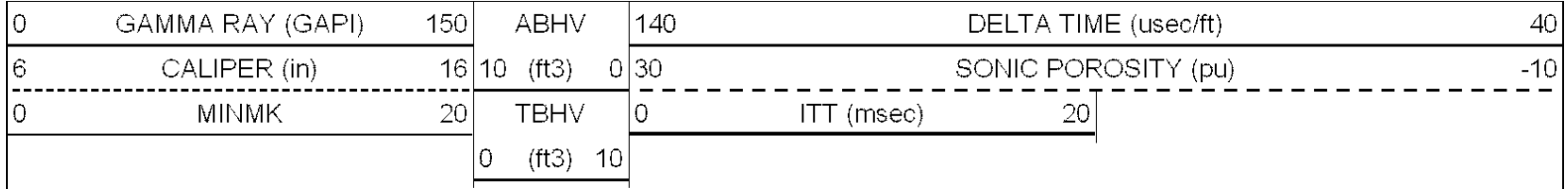


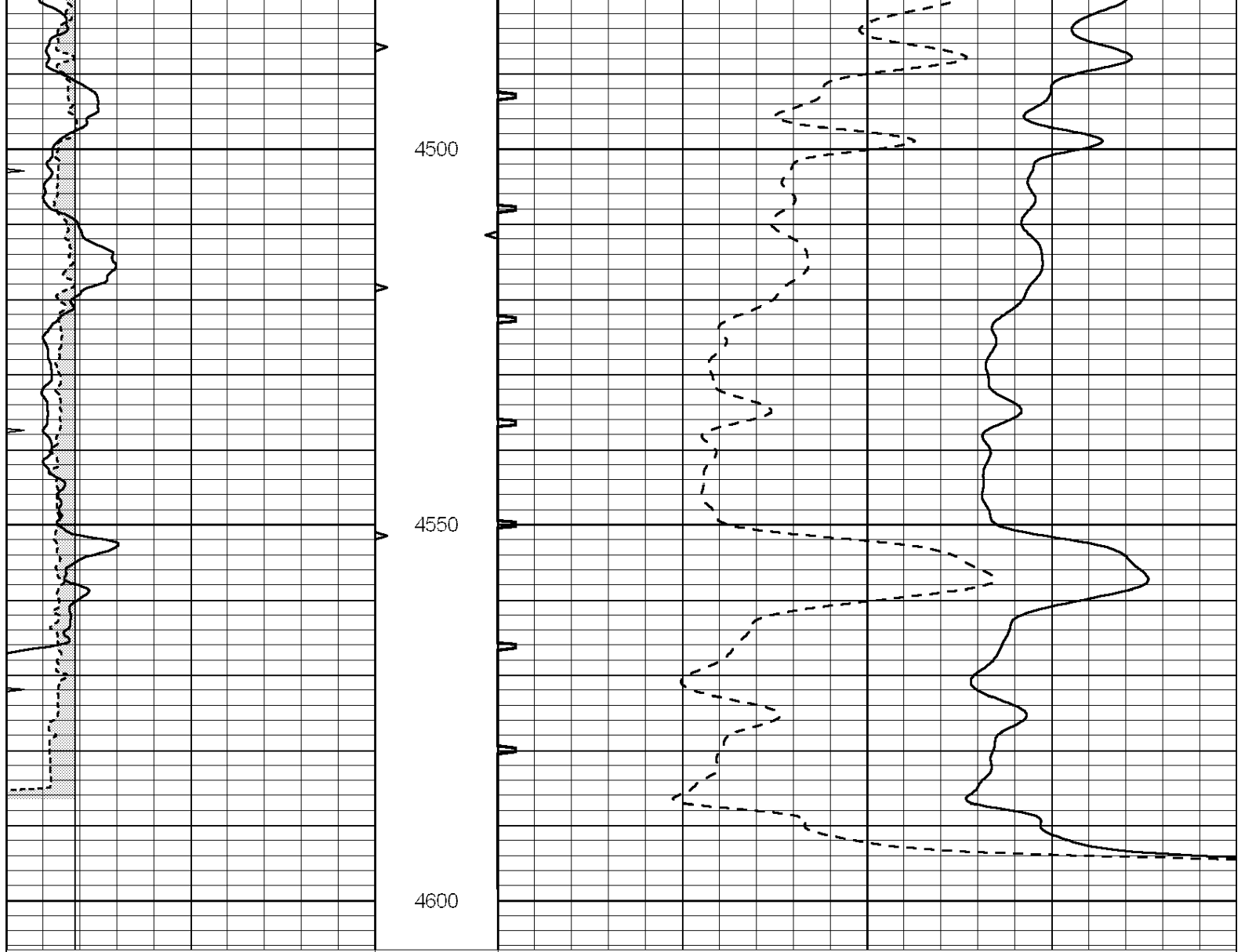




REPEAT SECTION

Database File: 010748pe.db
 Dataset Pathname: pass5.3
 Presentation Format: slt
 Dataset Creation: Wed May 01 09:38:10 2013
 Charted by: Depth in Feet scaled 1:240





0	GAMMA RAY (GAPI)	150	ABHV	140	DELTA TIME (usec/ft)	40	
6	CALIPER (in)	16	10 (ft3)	0	30	SONIC POROSITY (pu)	-10
0	MINMK	20	TBHV	0	ITT (msec)	20	
			0 (ft3)	10			