



Pioneer Energy Services

Microresistivity Log

API No.	15-063-22, 121-00-00		
Company	Prospect Oil & Gas Corporation		
Well	Ottley No. 2		
Field			
County	Gove	State	Kansas
Location	1,548' FSL & 1,654' FEL		
	Sec: 16	Twp: 13S	Rge: 30W
			Other Services RAG

Permanent Datum	Ground Level	Elevation 2894
Log Measured From	Kelly Bushing	5 Ft. Above Perm. Datum
Drilling Measured From	Kelly Bushing	
Date	8/1/2013	

Run Number	Two
Depth Driller	4507
Depth Logger	4505
Bottom Logged Interval	4504
Top Log Interval	3600
Casing Driller	8.625 @ 218
Casing Logger	216
Bit Size	7.875
Type Fluid in Hole	Chemical
Salinity, ppm CL	2600
Density / Viscosity	9.4 52
pH / Fluid Loss	8.0 11.2
Source of Sample	Flowline
Rm @ Meas. Temp	.64 @ 76
Rmf @ Meas. Temp	.48 @ 76
Rmc @ Meas. Temp	.86 @ 76
Source of Rmf / Rmc	Charts
Rm @ BHT	.40 @ 121
Operating Rig Time	4 Hours
Max Rec. Temp. F	121
Equipment Number	108
Location	Hays
Recorded By	J. Long
Witnessed By	Bob Hopkins

<<< Fold Here >>>

All interpretations are opinions based on inferences from electrical or other measurements and we cannot and do not guarantee the accuracy or correctness of any interpretation, and we shall not, except in the case of gross or willful negligence on our part, be liable or responsible for any loss, costs, damages, or expenses incurred or sustained by anyone resulting from any interpretation made by any of our officers, agents or employees. These interpretations are also subject to our general terms and conditions set out in our current Price Schedule.

Comments

Thank you for using Log-Tech, Inc.
(785) 625-3858

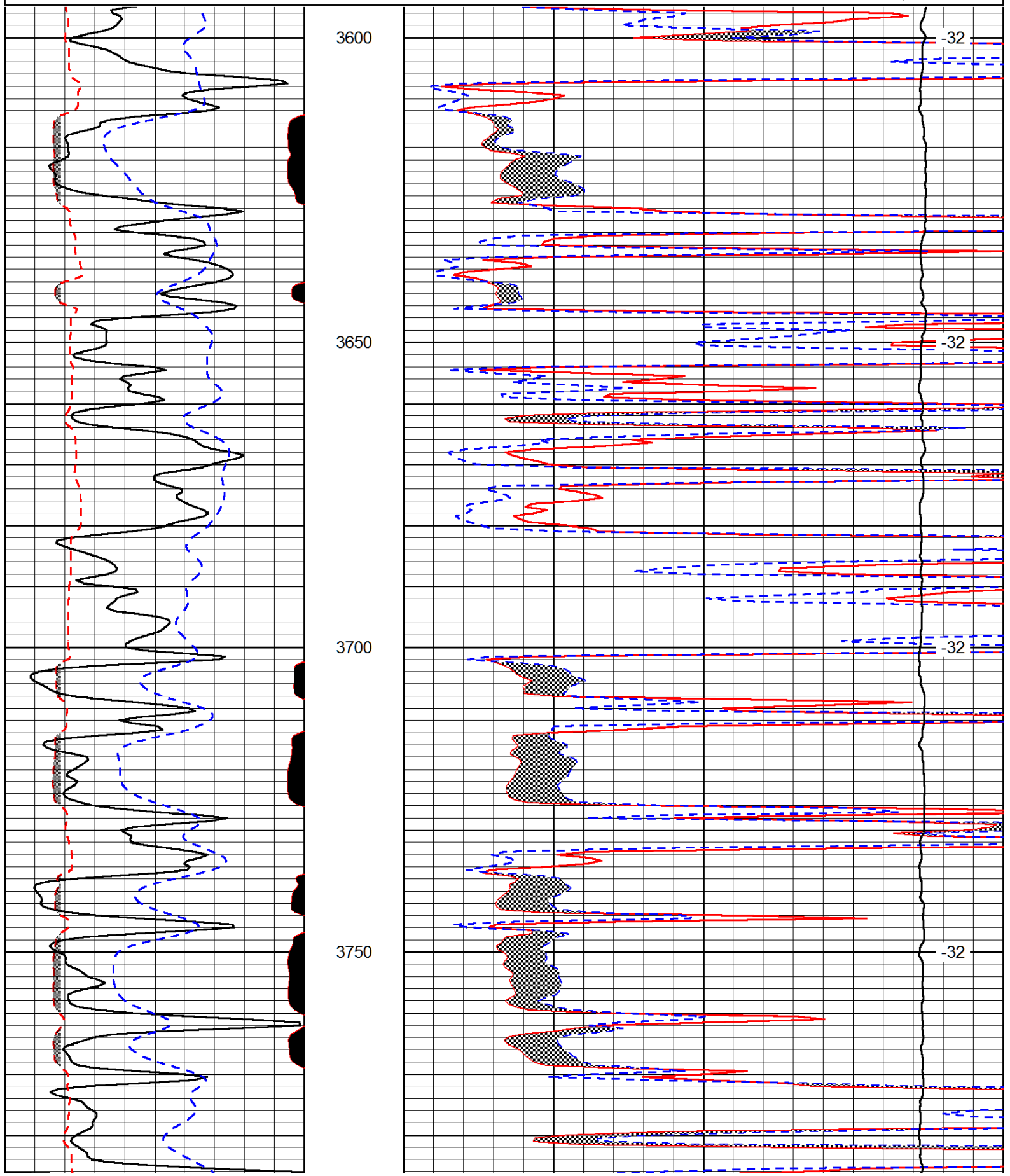
Gove, 9 3/4 West on S Road, to 26 Road, 3 South, 1/2 East, North Into

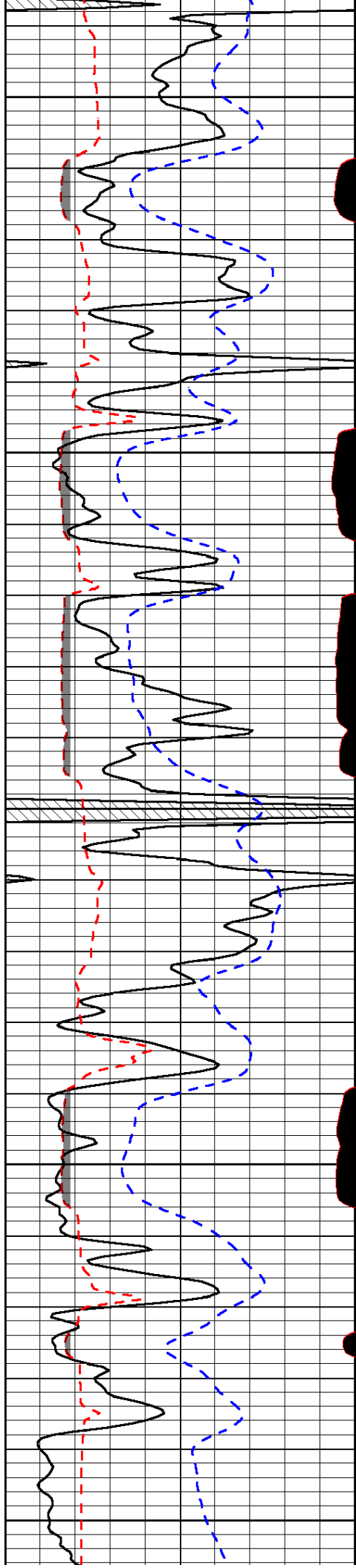
Database File: prospect_ottley_2hd.db
 Dataset Pathname: rag/prosrag
 Presentation Format: micro
 Dataset Creation: Thu Aug 01 07:46:29 2013
 Charted by: Depth in Feet scaled 1:240

0	Gamma Ray (GAPI)	150
6	MCAL (in)	16
2.875	Mud Cake (in)	7.875
-200	SP (mV)	0

0	Micro Inverse 1 X 1 (Ohm-m)	40
0	Micro Normal 2" (Ohm-m)	40
10000	Line Weight (lb)	0

LSPD
(ft/min)





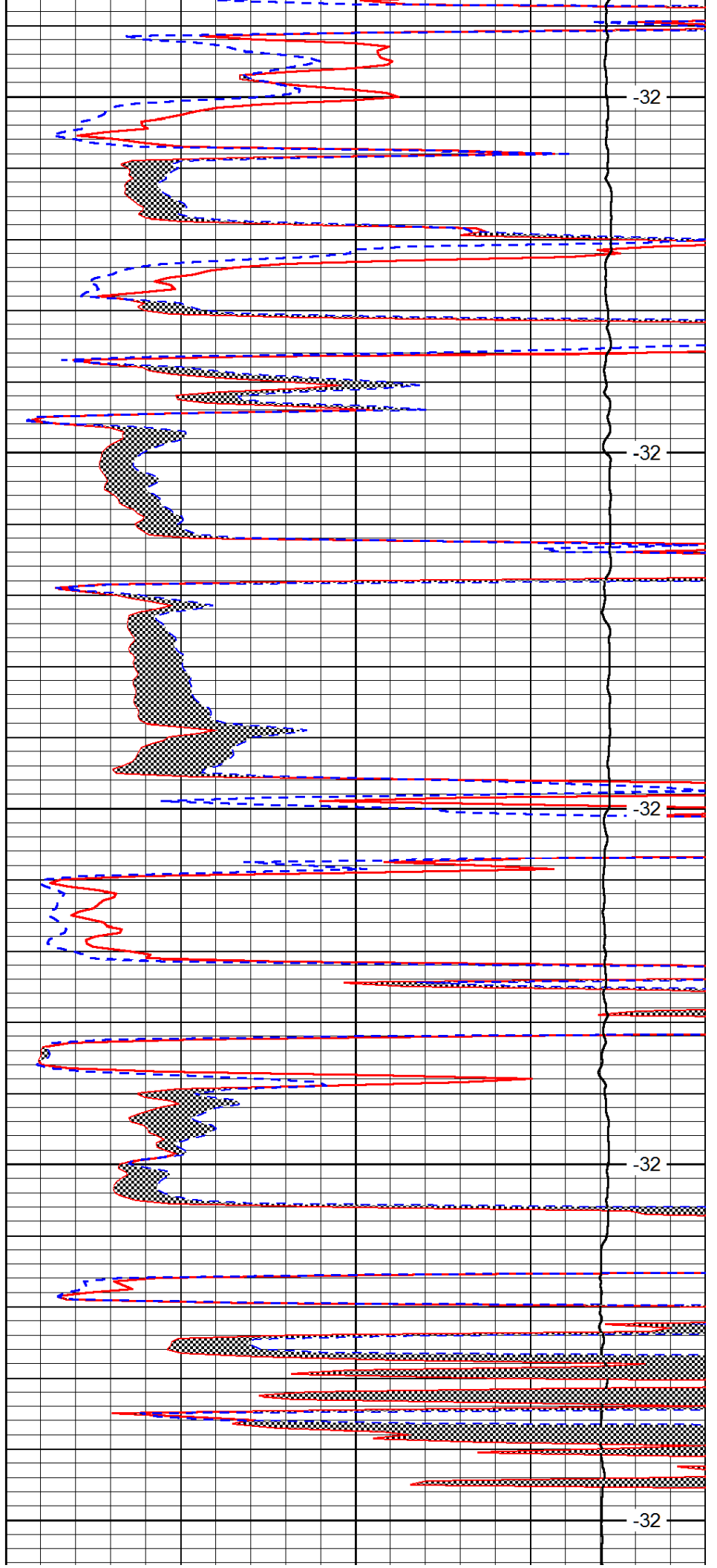
3800

3850

3900

3950

4000



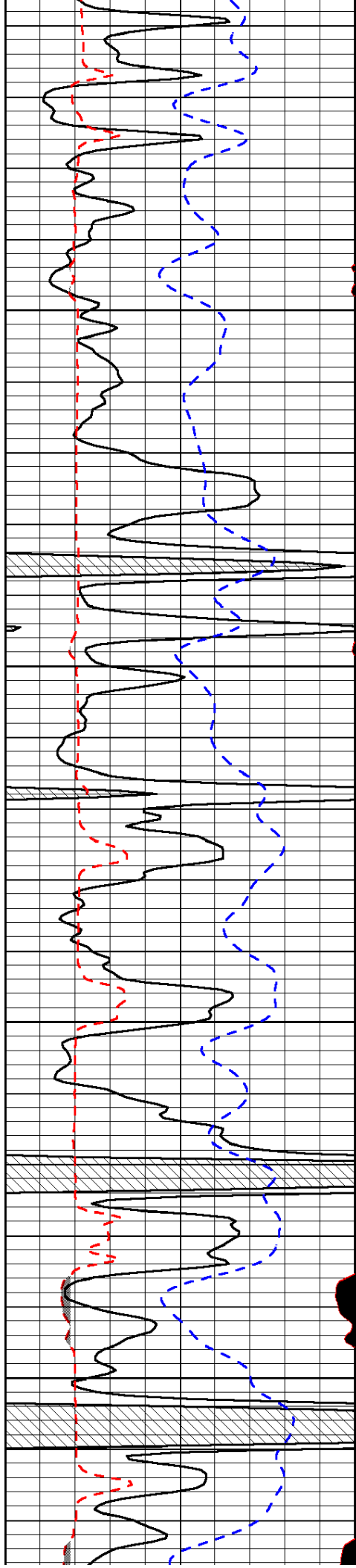
-32

-32

-32

-32

-32

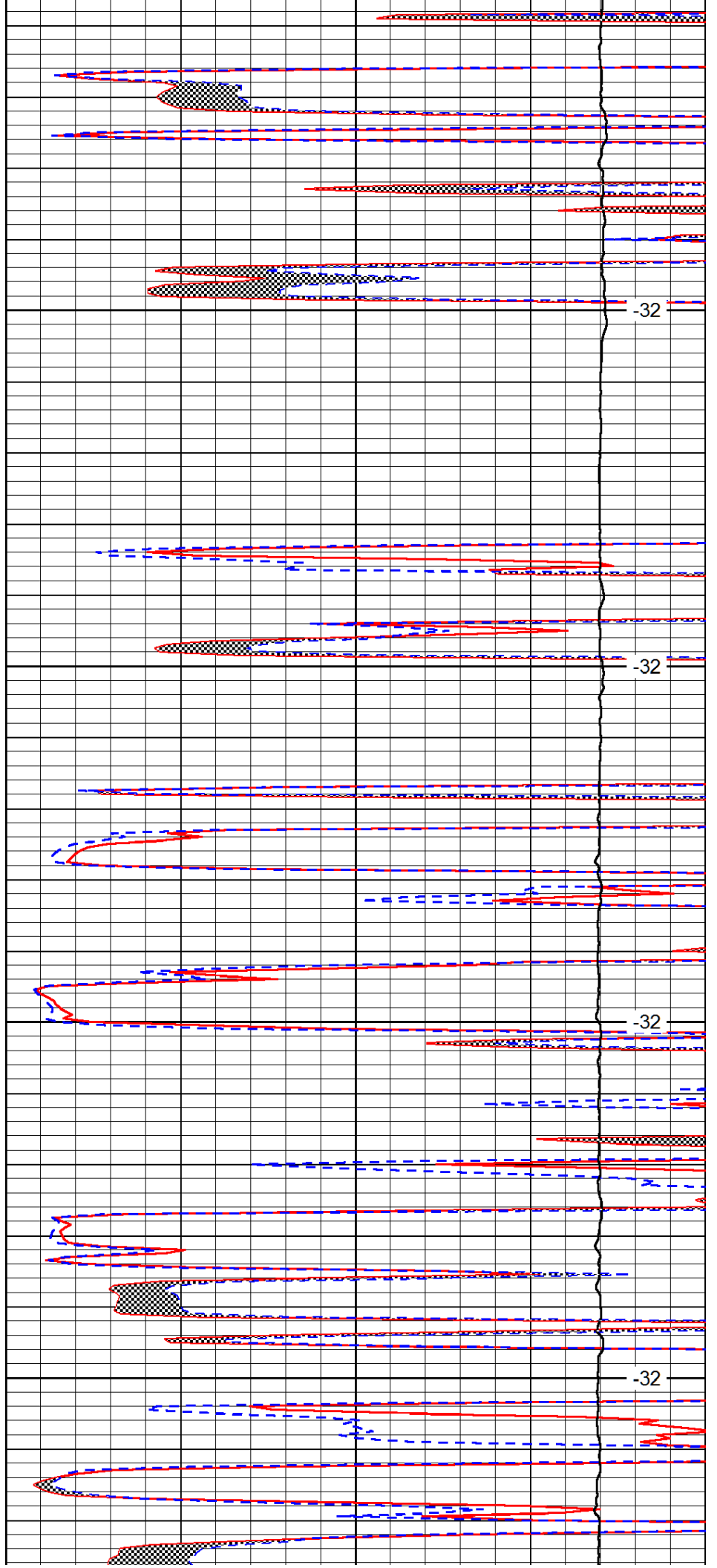


4050

4100

4150

4200

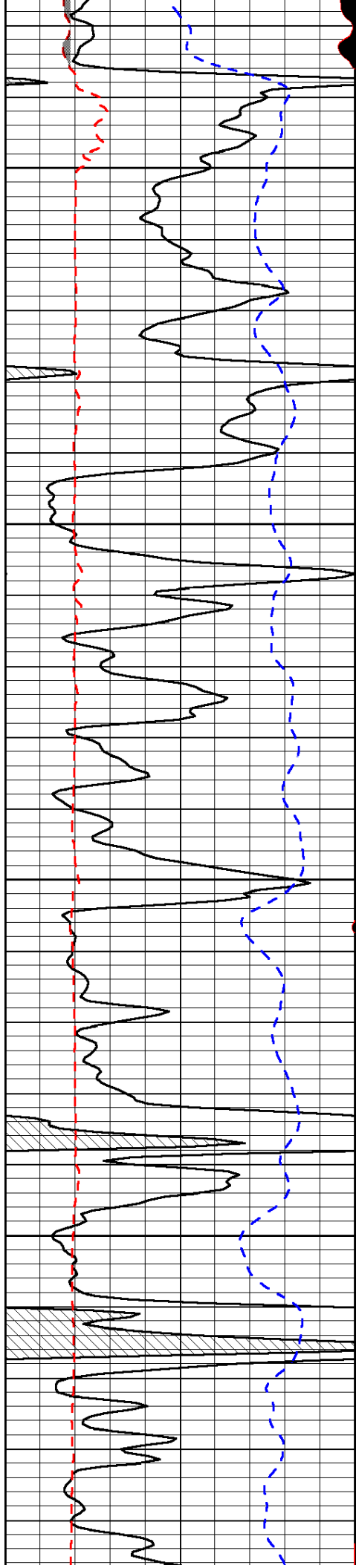


-32

-32

-32

-32

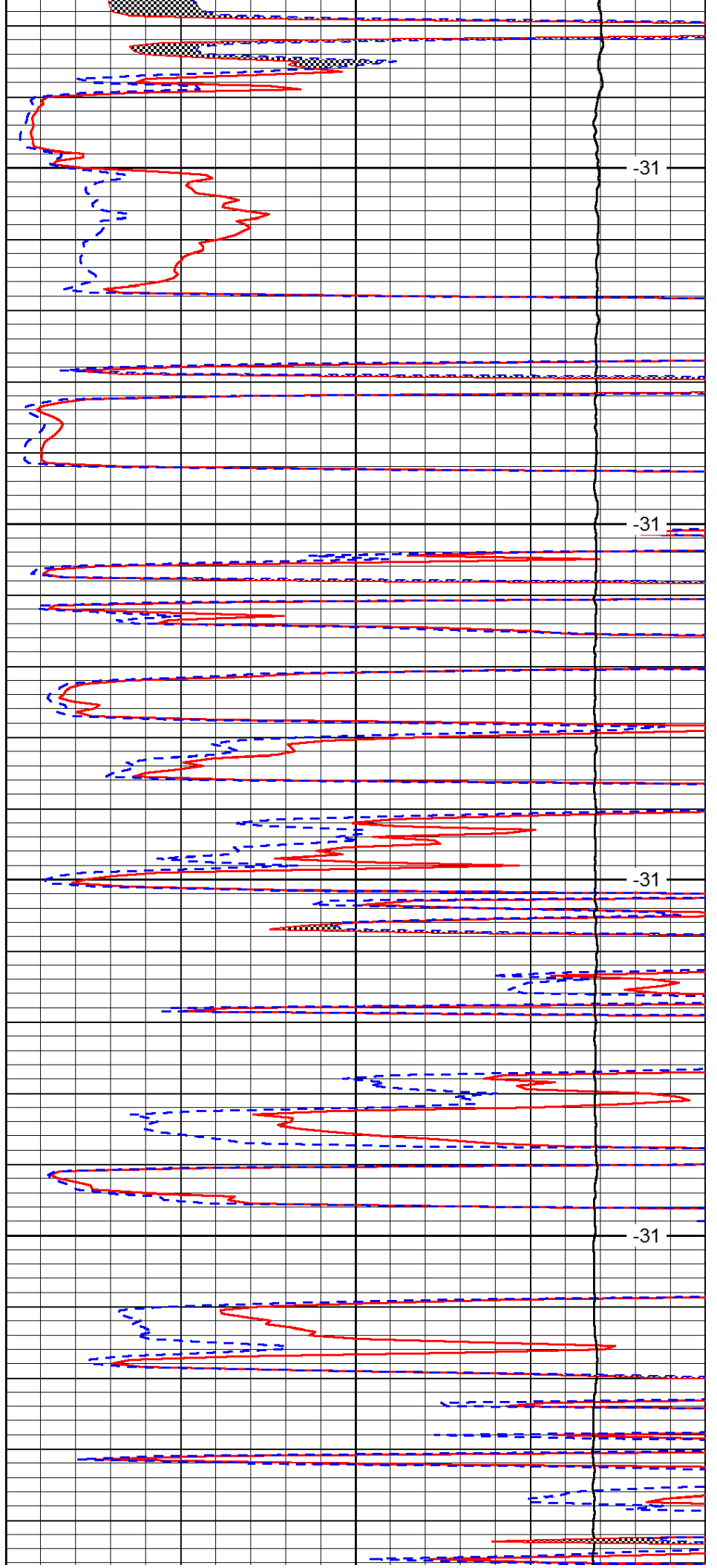


4250

4300

4350

4400

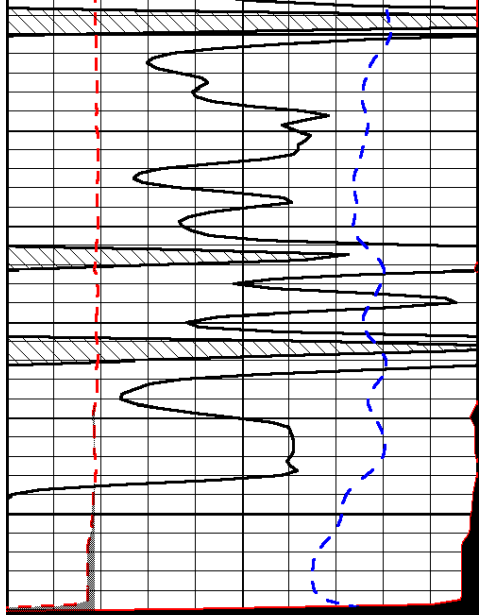


-31

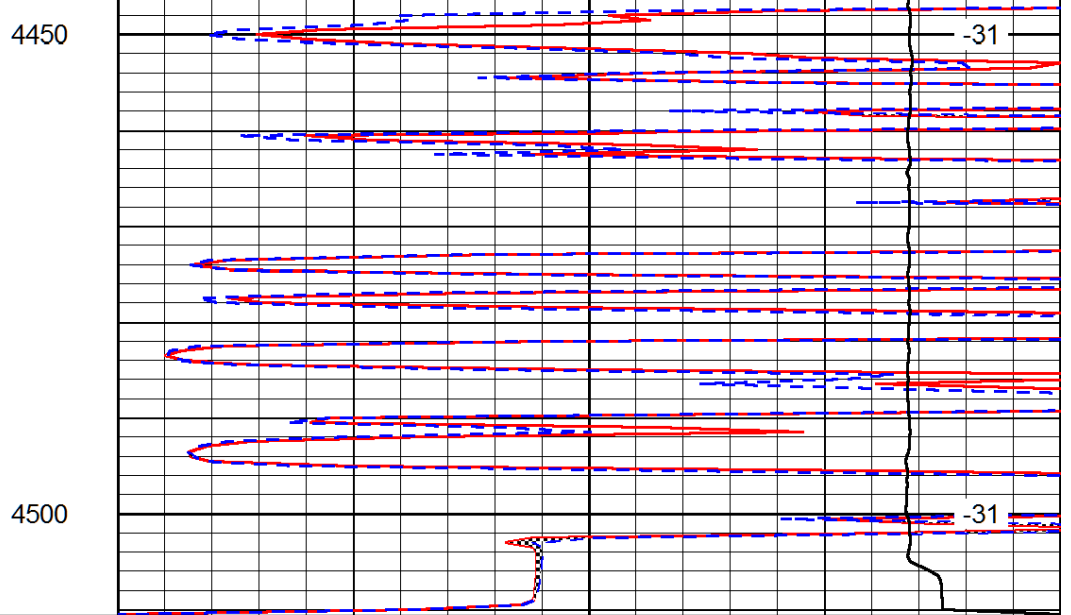
-31

-31

-31



0	Gamma Ray (GAPI)	150
6	MCAL (in)	16
2.875	Mud Cake (in)	7.875
-200	SP (mV)	0



0	Micro Inverse 1 X 1 (Ohm-m)	40
0	Micro Normal 2" (Ohm-m)	40
10000	Line Weight (lb)	0

LSPD
(ft/min)