



Pioneer Energy Services

Radiation Guard Log

15-063-22,121-00-00

API No.

Company **Prospect Oil & Gas Corporation**

Well **Ottley No. 2**

Field

County **Gove** State **Kansas**

Location **1,548' FSL & 1,654' FEL**

Other Services
MEL

Sec: **16** Twp: **13S** Rge: **30W**

Permanent Datum **Ground Level** Elevation **2894**

Log Measured From **Kelly Bushing** 5 Ft. Above Perm. Datum

Elevation
K.B. 2899
D.F. 2899
G.L. 2894

Date **8/1/2013**

Run Number **One**

Depth Driller **4507**

Depth Logger **4505**

Bottom Logged Interval **4504**

Top Log Interval **200**

Casing Driller **8,625 @ 218**

Casing Logger **216**

Bit Size **7.875**

Type Fluid in Hole **Chemical**

Salinity, ppm CL **2600**

Density / Viscosity **9.4 52**

pH / Fluid Loss **8.0 11.2**

Source of Sample **Flowline**

Rm @ Meas. Temp **.64 @ 76**

Rmf @ Meas. Temp **.48 @ 76**

Rmc @ Meas. Temp **.86 @ 76**

Source of Rmf / Rmc **Charts**

Rm @ BHT **.40 @ 121**

Operating Rig Time **4 Hours**

Max Rec. Temp. F **121**

Equipment Number **108**

Location **Hays**

Recorded By **J. Long**

Witnessed By **Bob Hopkins**

<<< Fold Here >>>

All interpretations are opinions based on inferences from electrical or other measurements and we cannot and do not guarantee the accuracy or correctness of any interpretation, and we shall not, except in the case of gross or willful negligence on our part, be liable or responsible for any loss, costs, damages, or expenses incurred or sustained by anyone resulting from any interpretation made by any of our officers, agents or employees. These interpretations are also subject to our general terms and conditions set out in our current Price Schedule.

Comments

Thank you for using Log-Tech, Inc.
(785) 625-3858

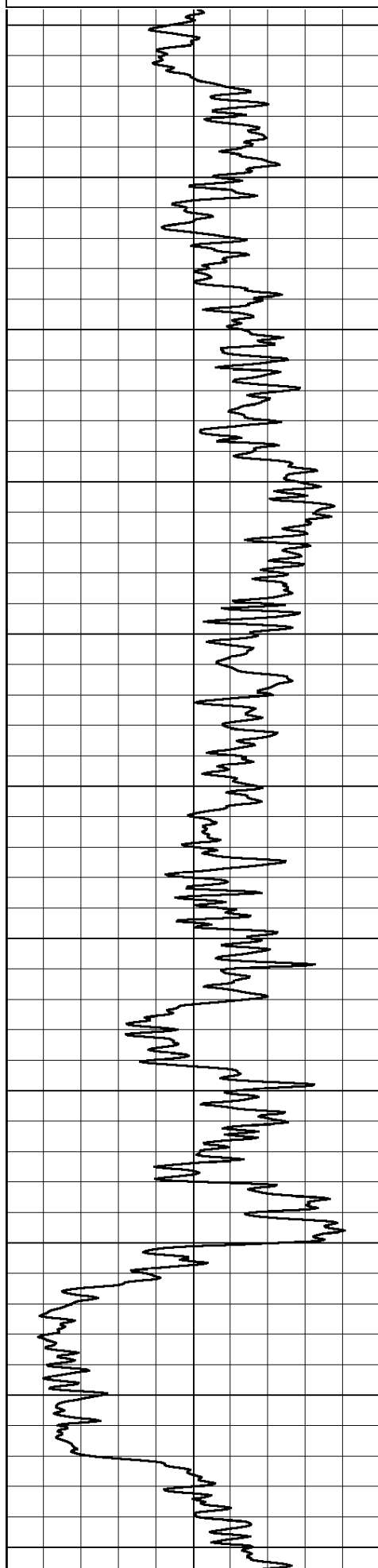
Gove, 9 3/4 West on S Road, to 26 Road, 3 South, 1/2 East, North Into

Database File: prospect_ottley_2hd.db
 Dataset Pathname: rag/prosrag
 Presentation Format: rag2in
 Dataset Creation: Thu Aug 01 07:46:29 2013
 Charted by: Depth in Feet scaled 1:600

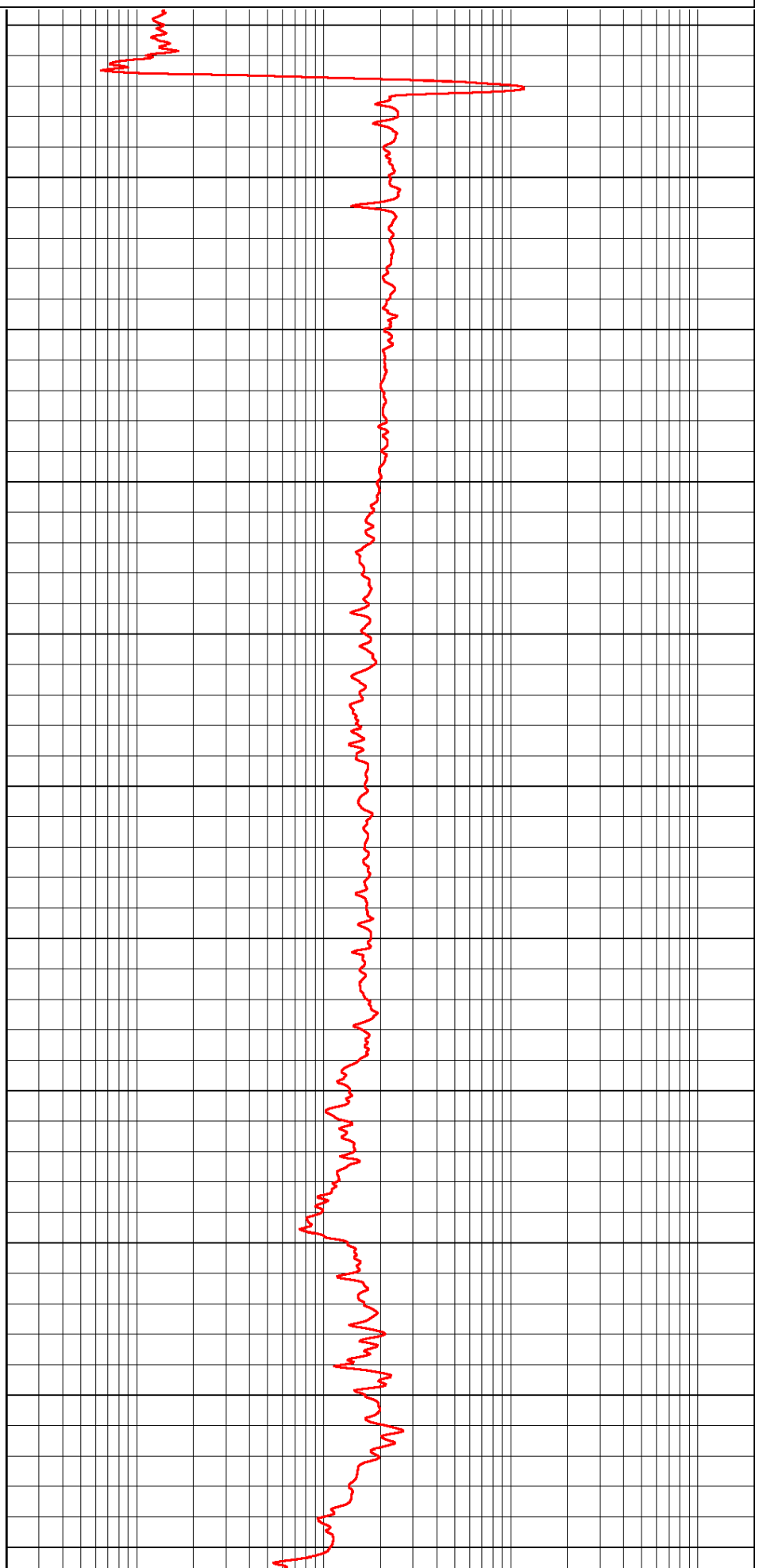
0 Gamma Ray (GAPI) 150

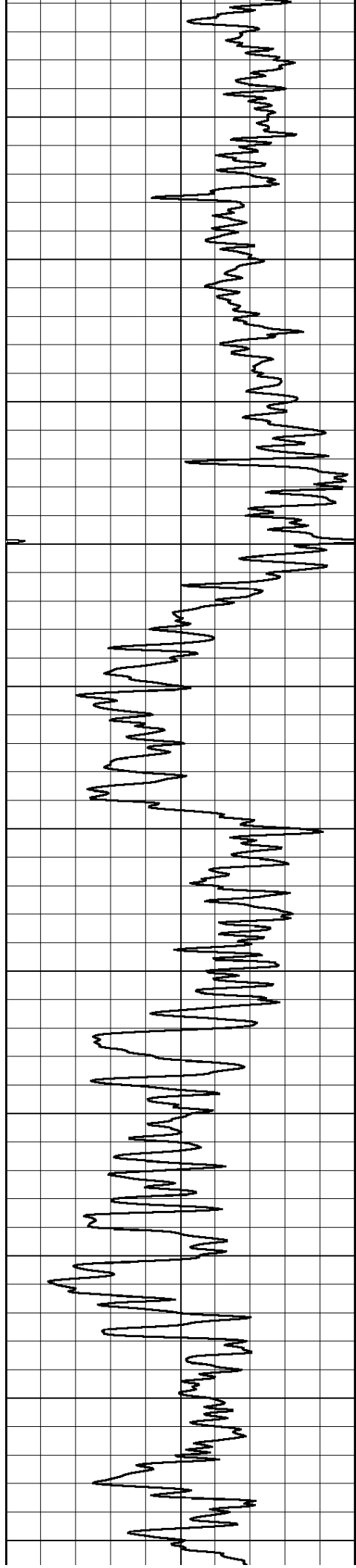
0.2 Igrd (Ohm-m)

2000



200
250
300
350
400
450
500
550
600
650
700





750

800

850

900

950

1000

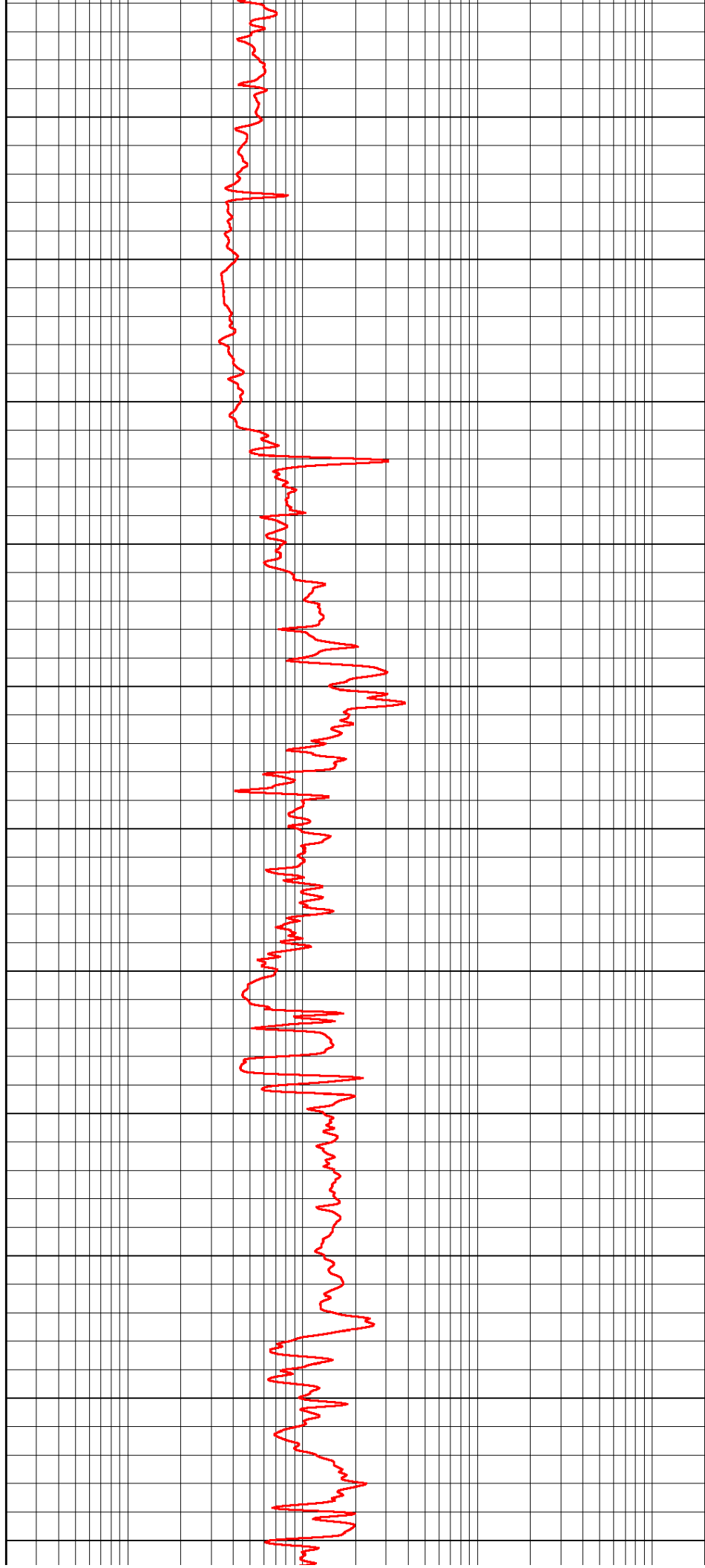
1050

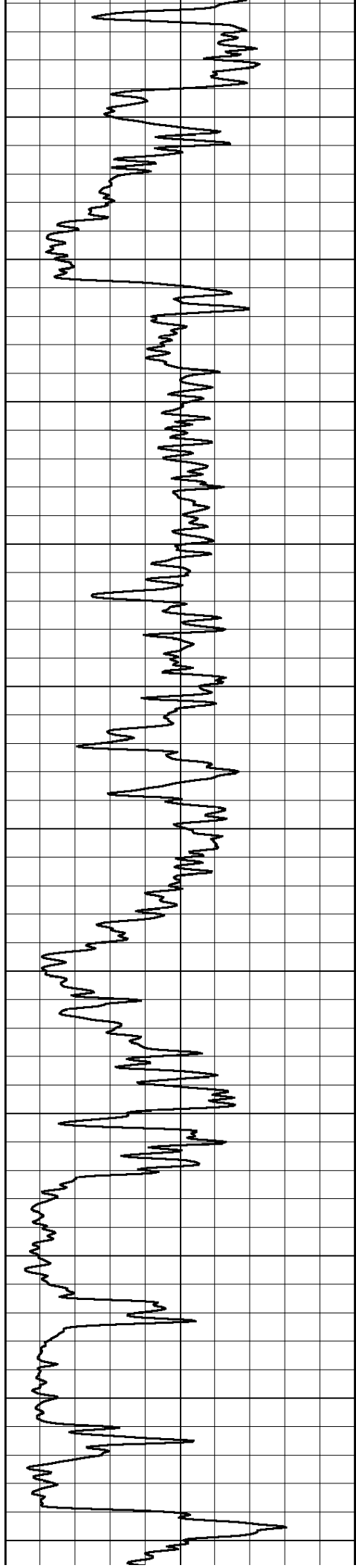
1100

1150

1200

1250





1300

1350

1400

1450

1500

1550

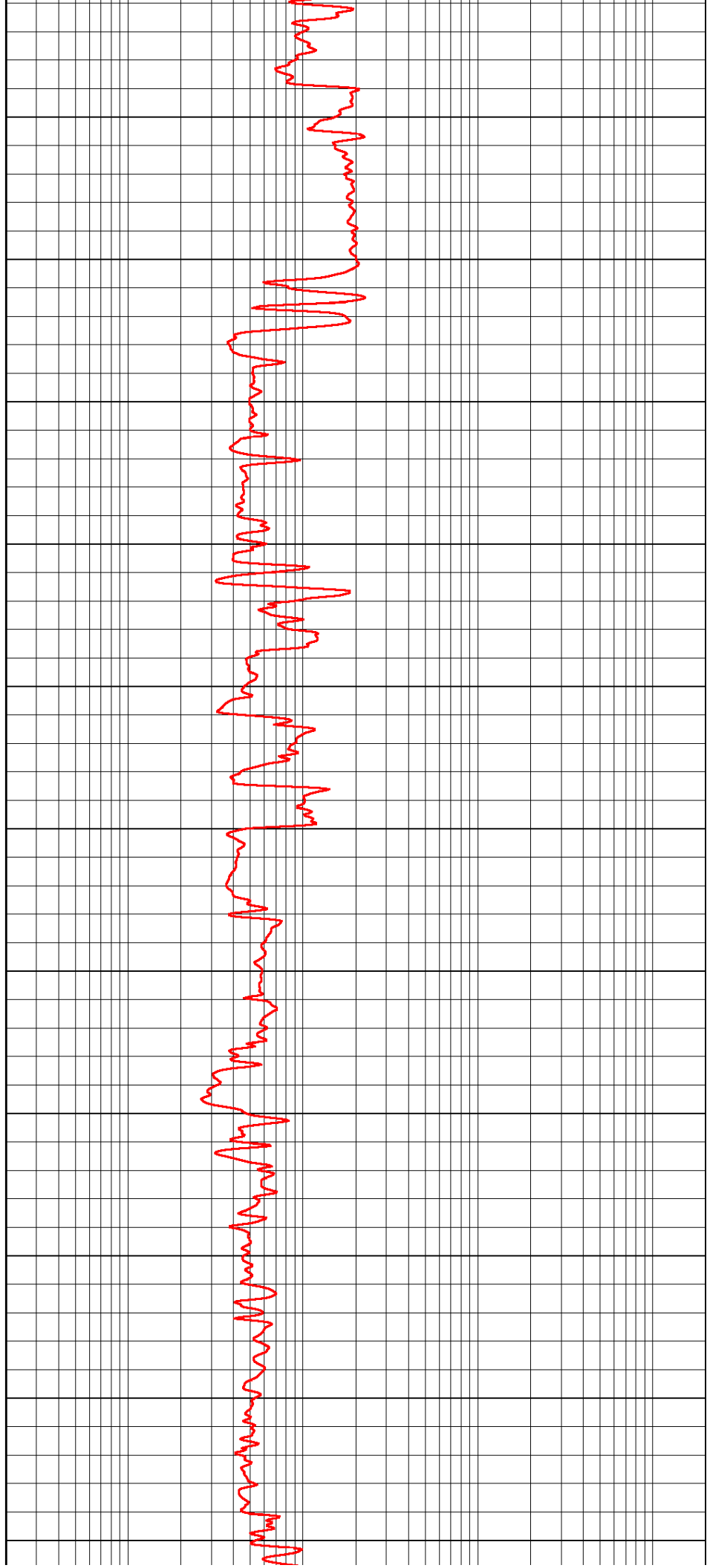
1600

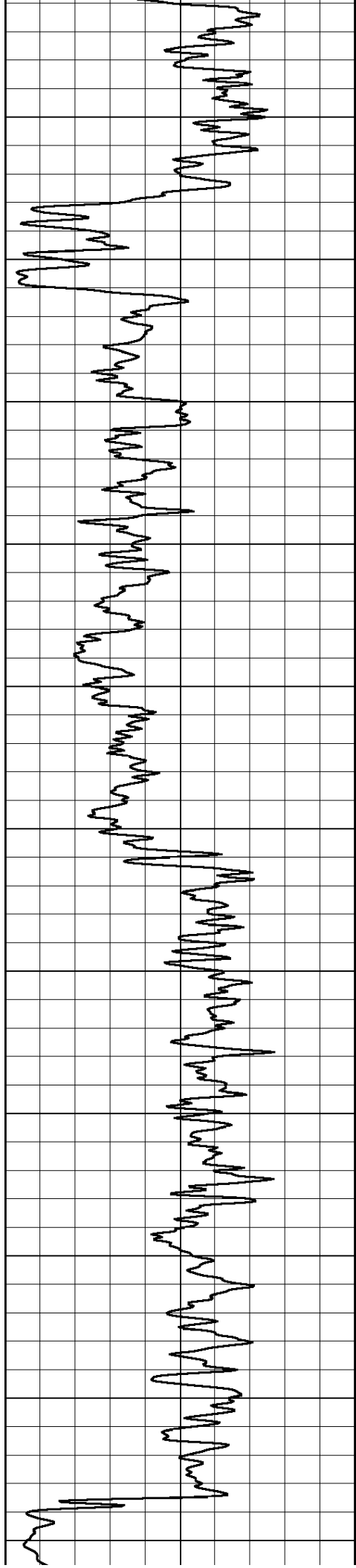
1650

1700

1750

1800





1850

1900

1950

2000

2050

2100

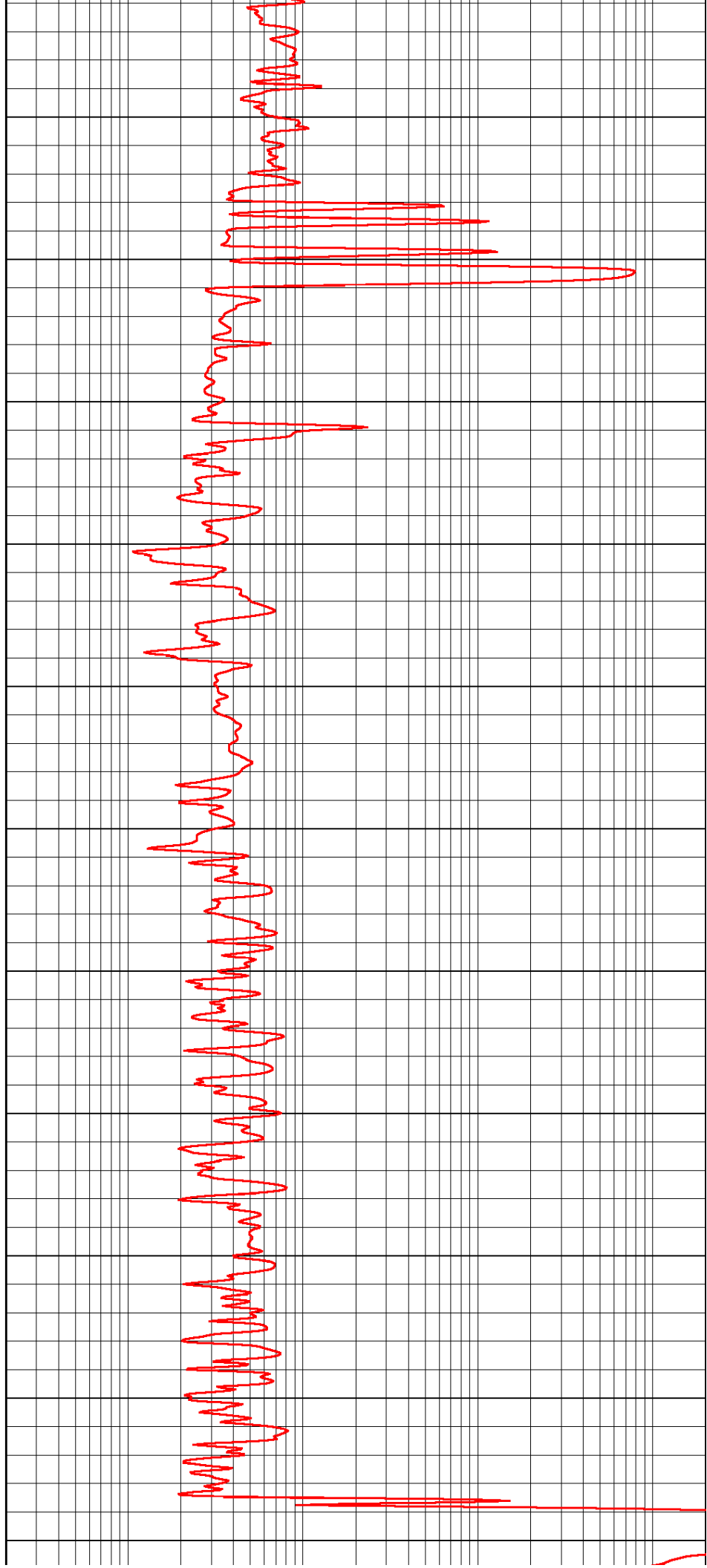
2150

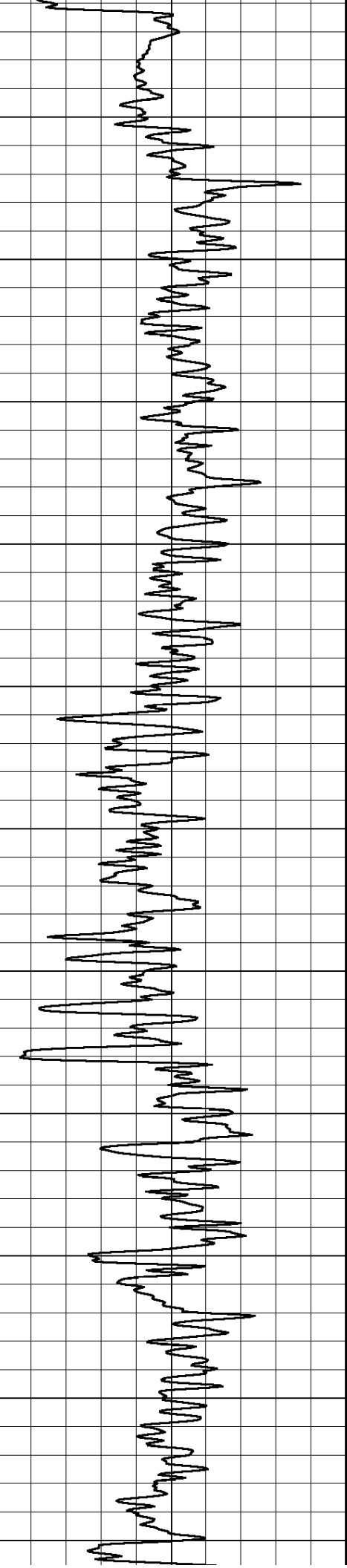
2200

2250

2300

2350





2400

2450

2500

2550

2600

2650

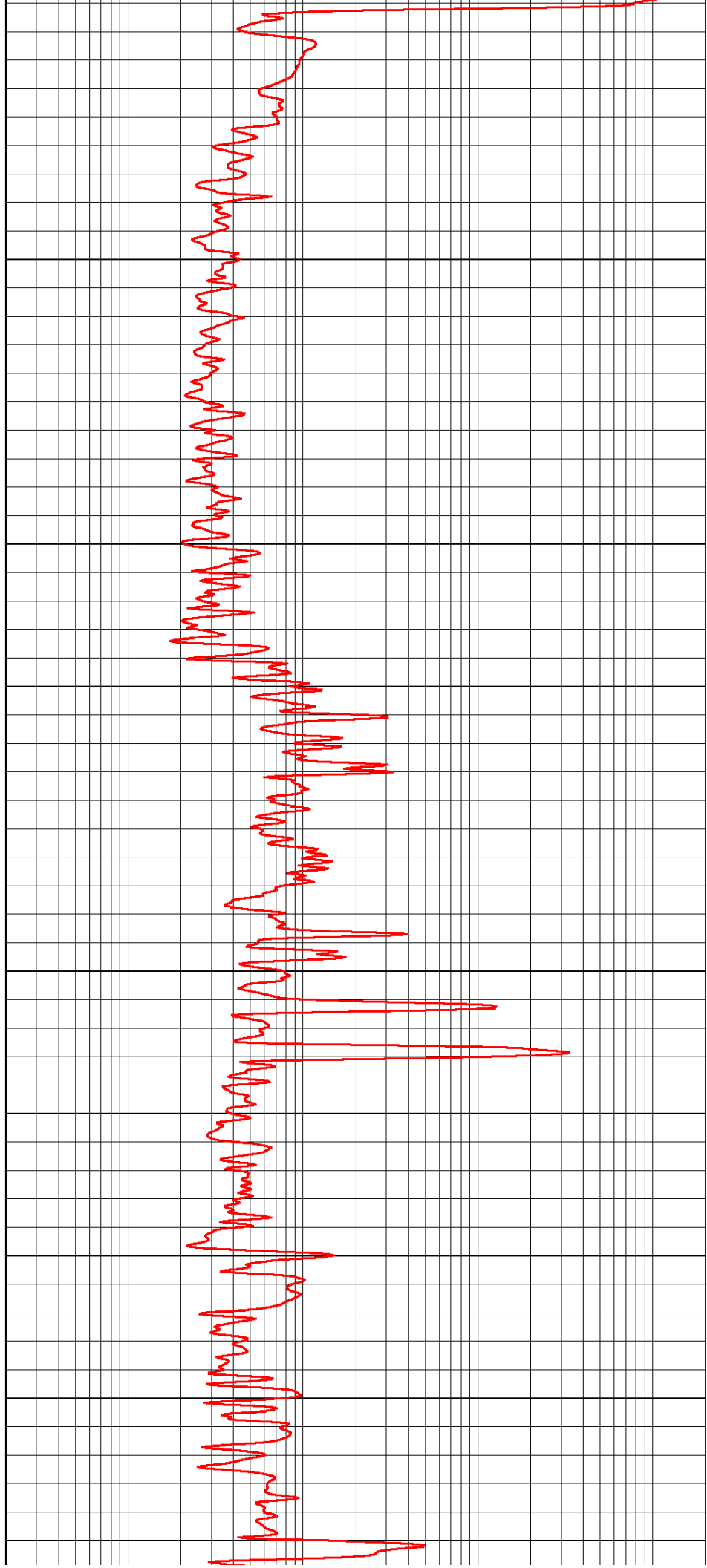
2700

2750

2800

2850

2900



2400

2450

2500

2550

2600

2650

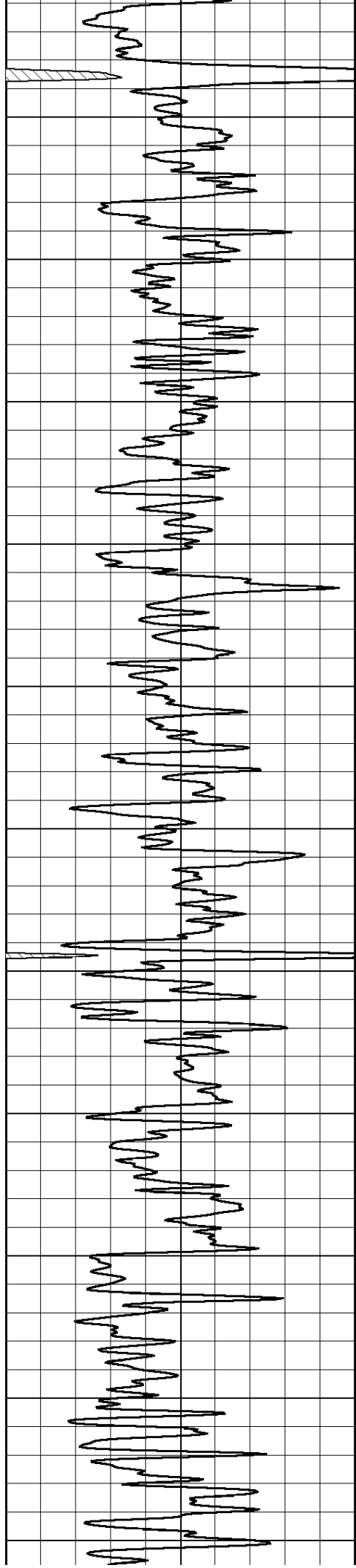
2700

2750

2800

2850

2900



2950

3000

3050

3100

3150

3200

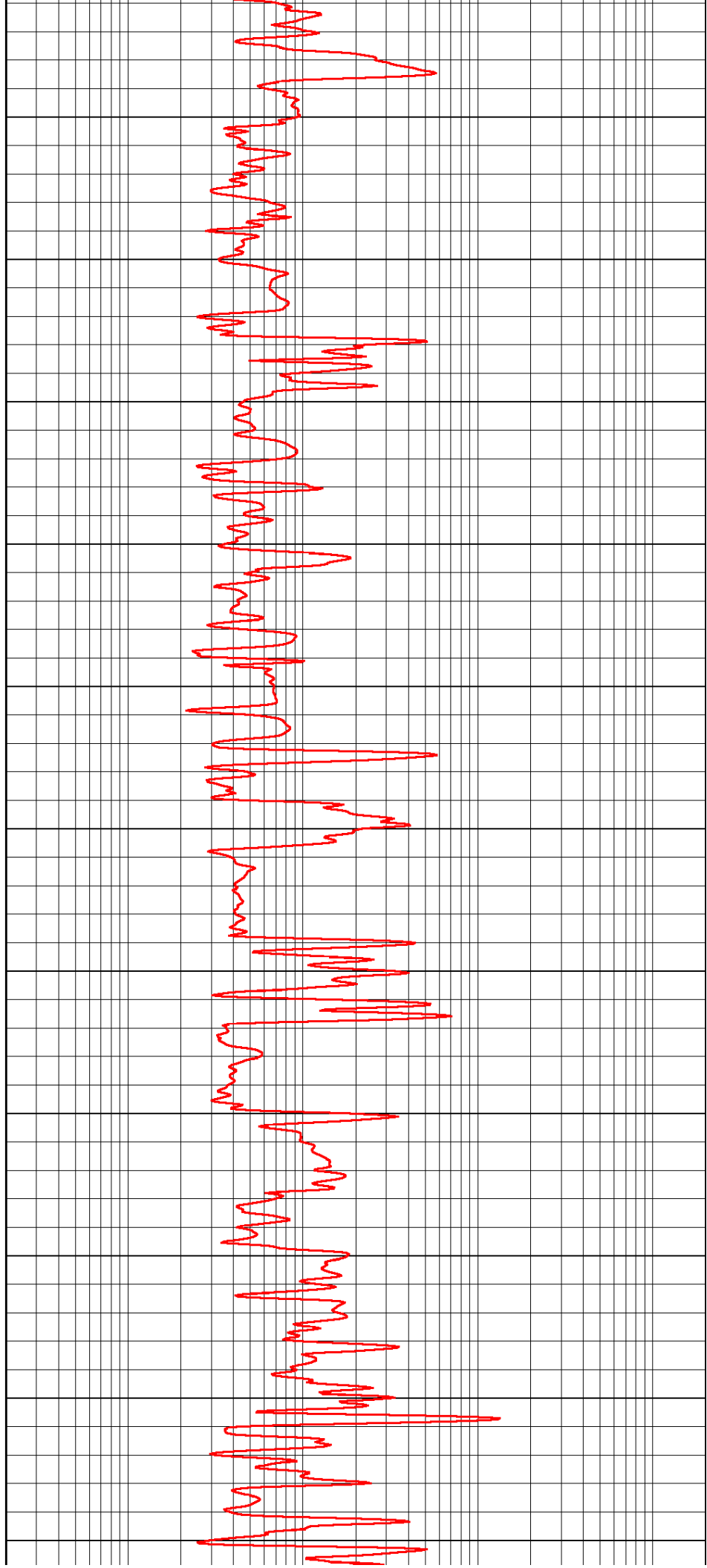
3250

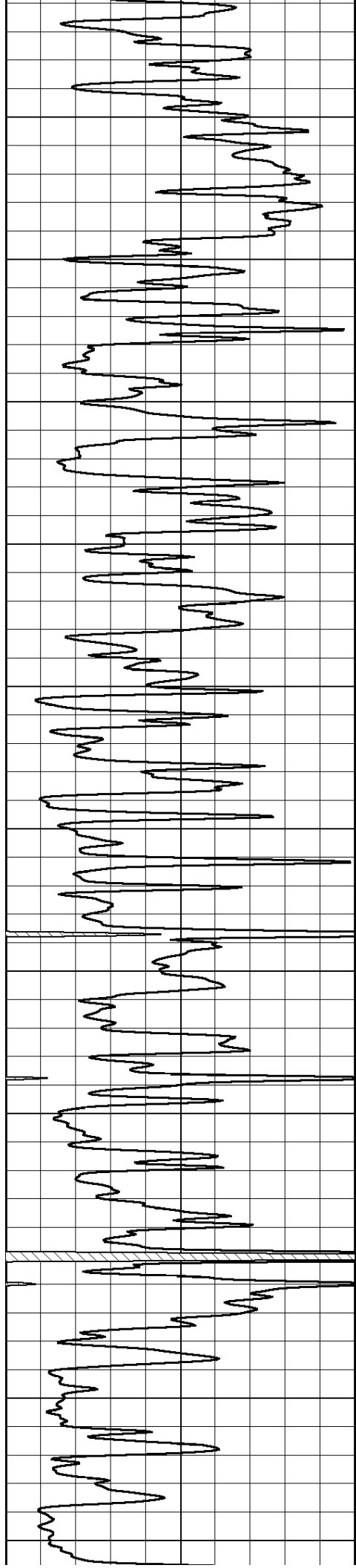
3300

3350

3400

3450





3500

3550

3600

3650

3700

3750

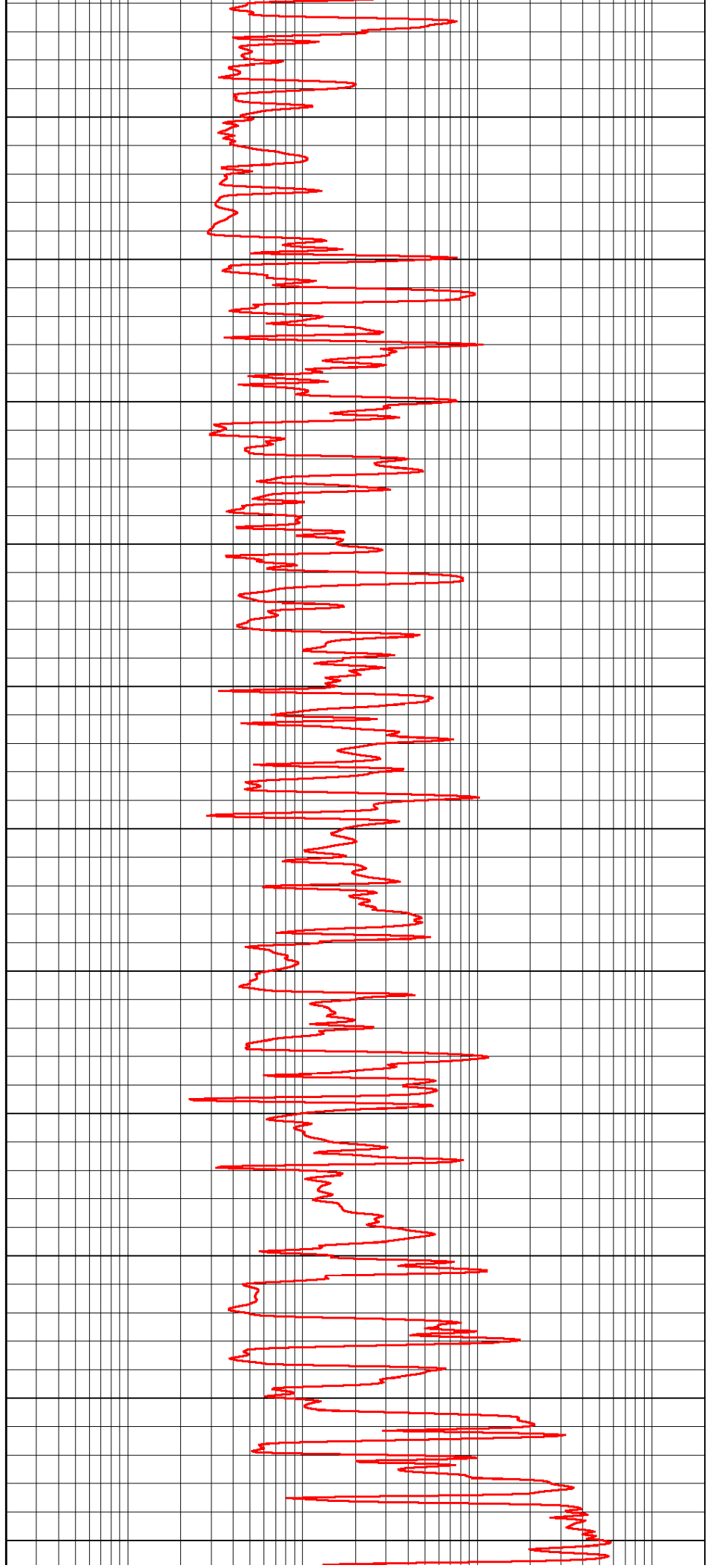
3800

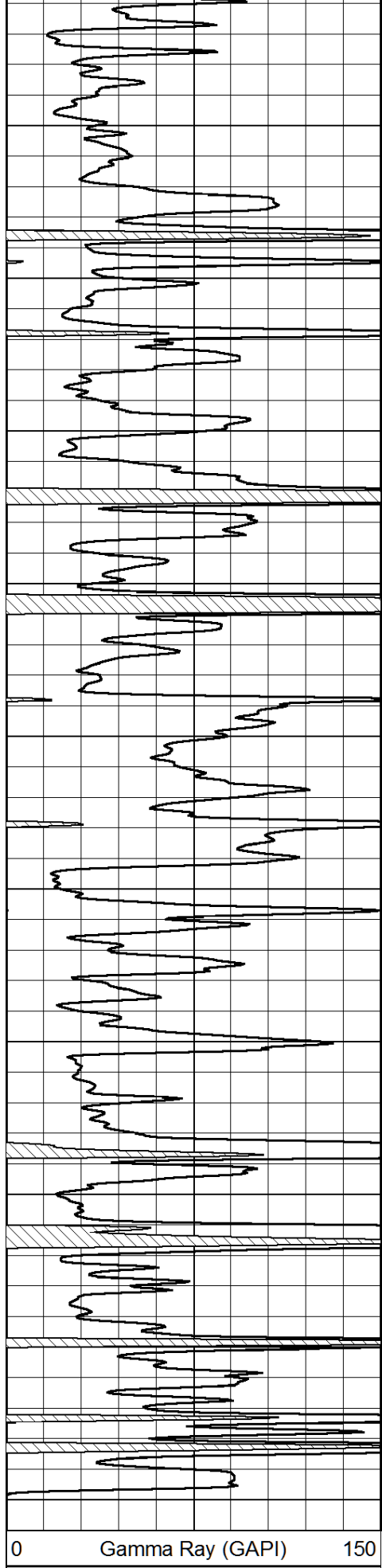
3850

3900

3950

4000





4050

4100

4150

4200

4250

4300

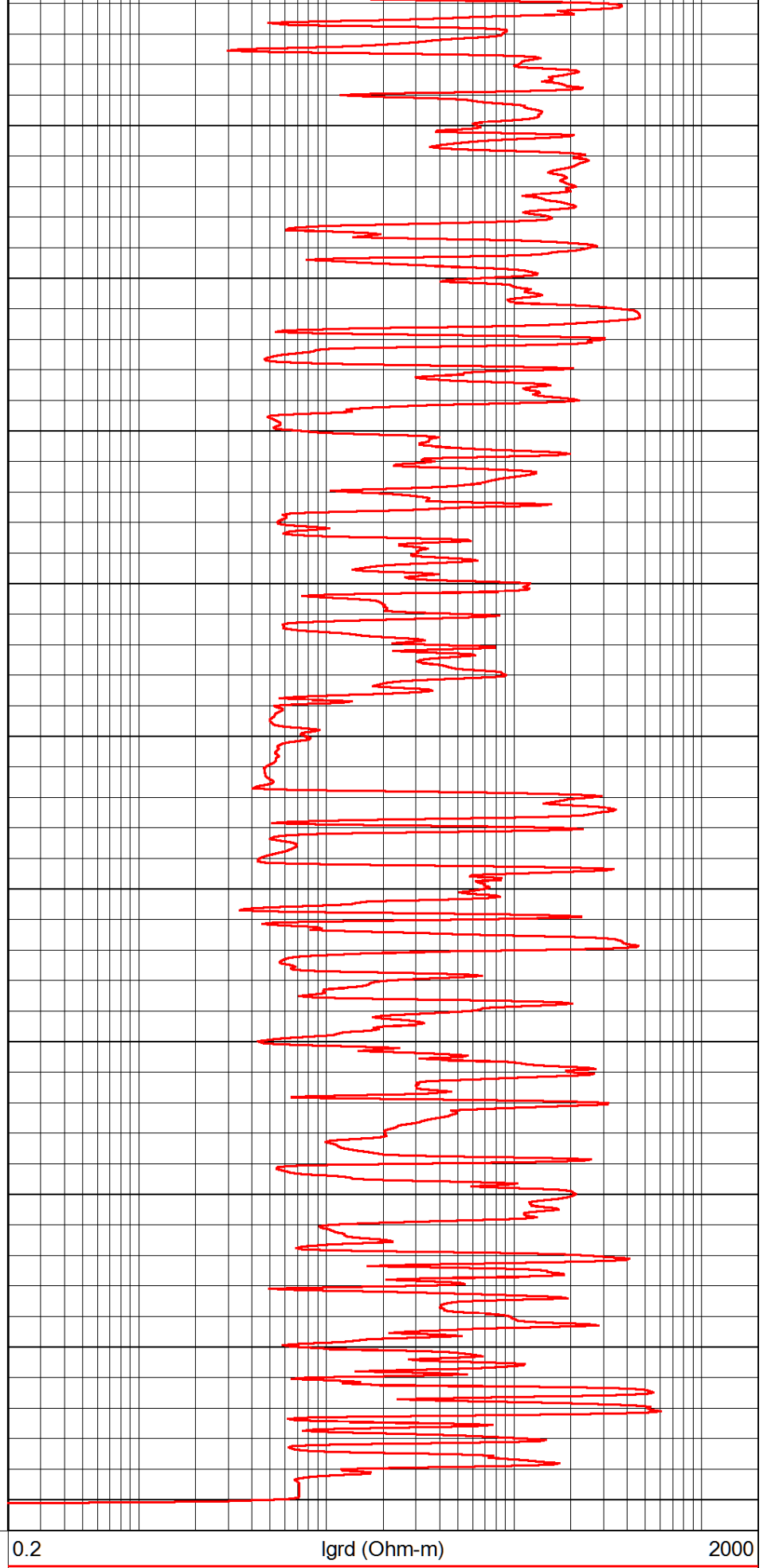
4350

4400

4450

4500

0 Gamma Ray (GAPI) 150



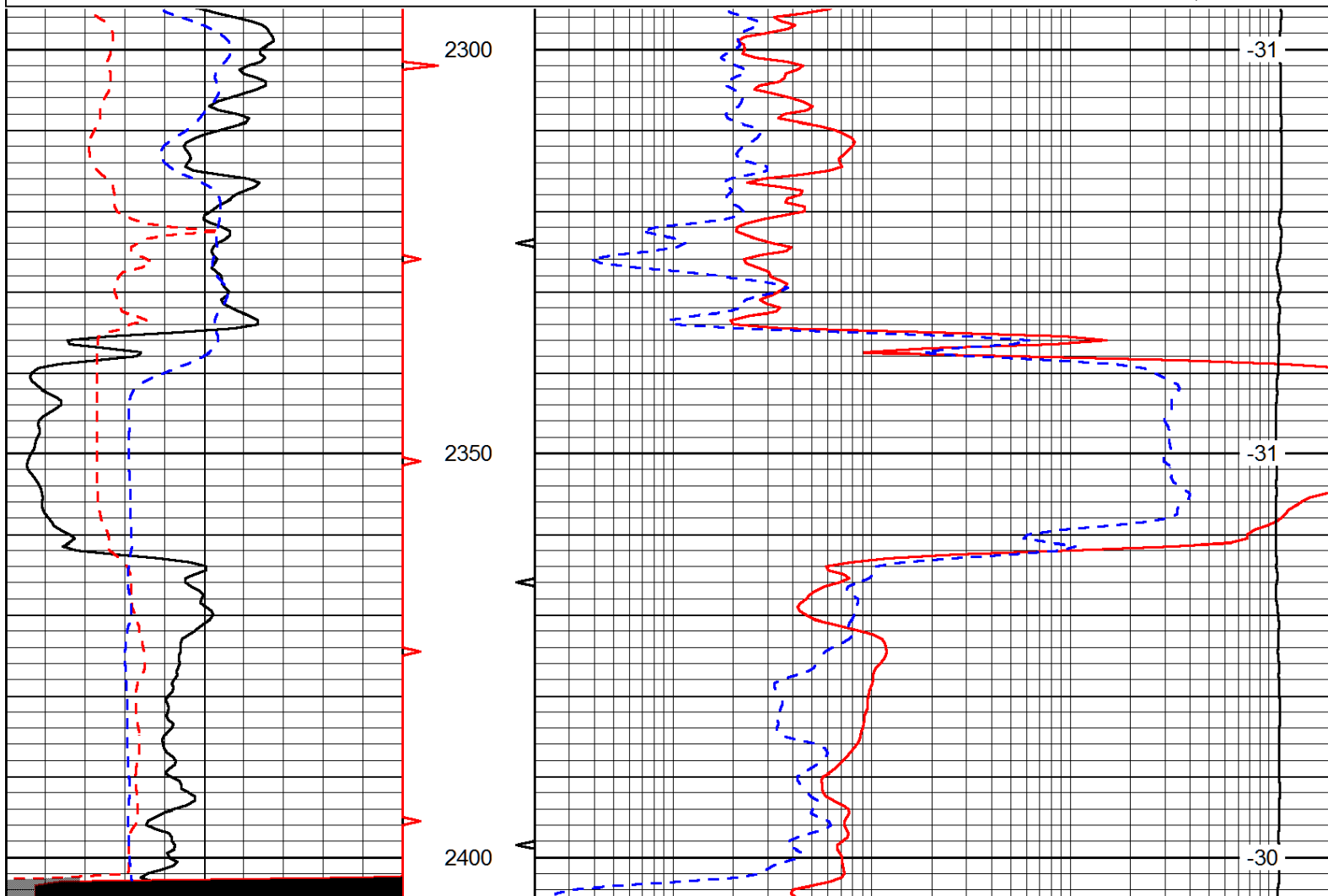
0.2 Igrd (Ohm-m) 2000

Database File: prospect_otitley_2hd.db
 Dataset Pathname: rag/prosrag
 Presentation Format: rag
 Dataset Creation: Thu Aug 01 07:46:29 2013
 Charted by: Depth in Feet scaled 1:240

0	Gamma Ray (GAPI)	150
6	SCAL (in)	16
-200	sp (mV)	0

0.2	LGRD (Ohm-m)	2000
560	SWNC (NAPI)	2160
15000	Line Tension (lb)	0

LSPD
(ft/min)



0	Gamma Ray (GAPI)	150
6	SCAL (in)	16
-200	sp (mV)	0

0.2	LGRD (Ohm-m)	2000
560	SWNC (NAPI)	2160
15000	Line Tension (lb)	0

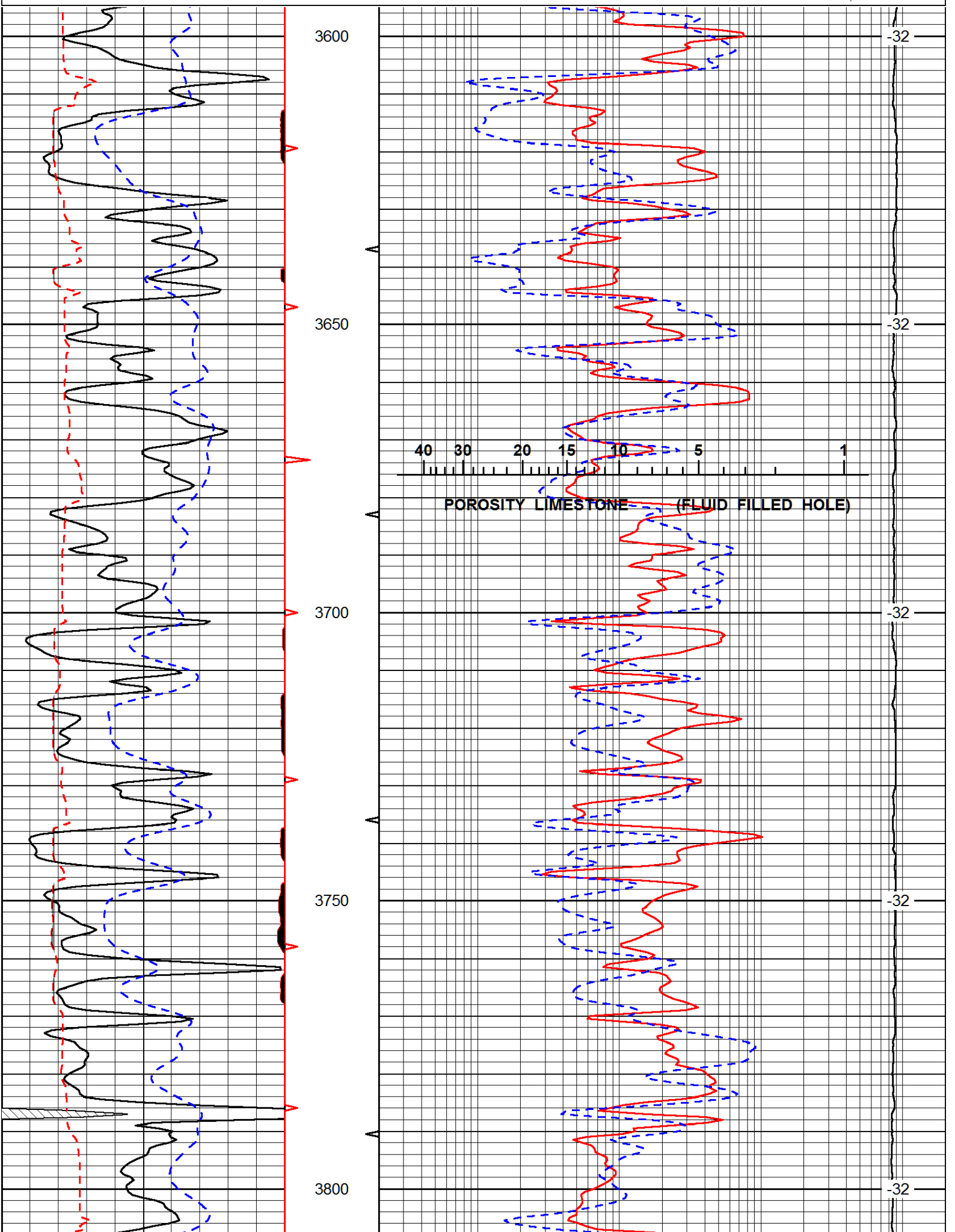
LSPD
(ft/min)

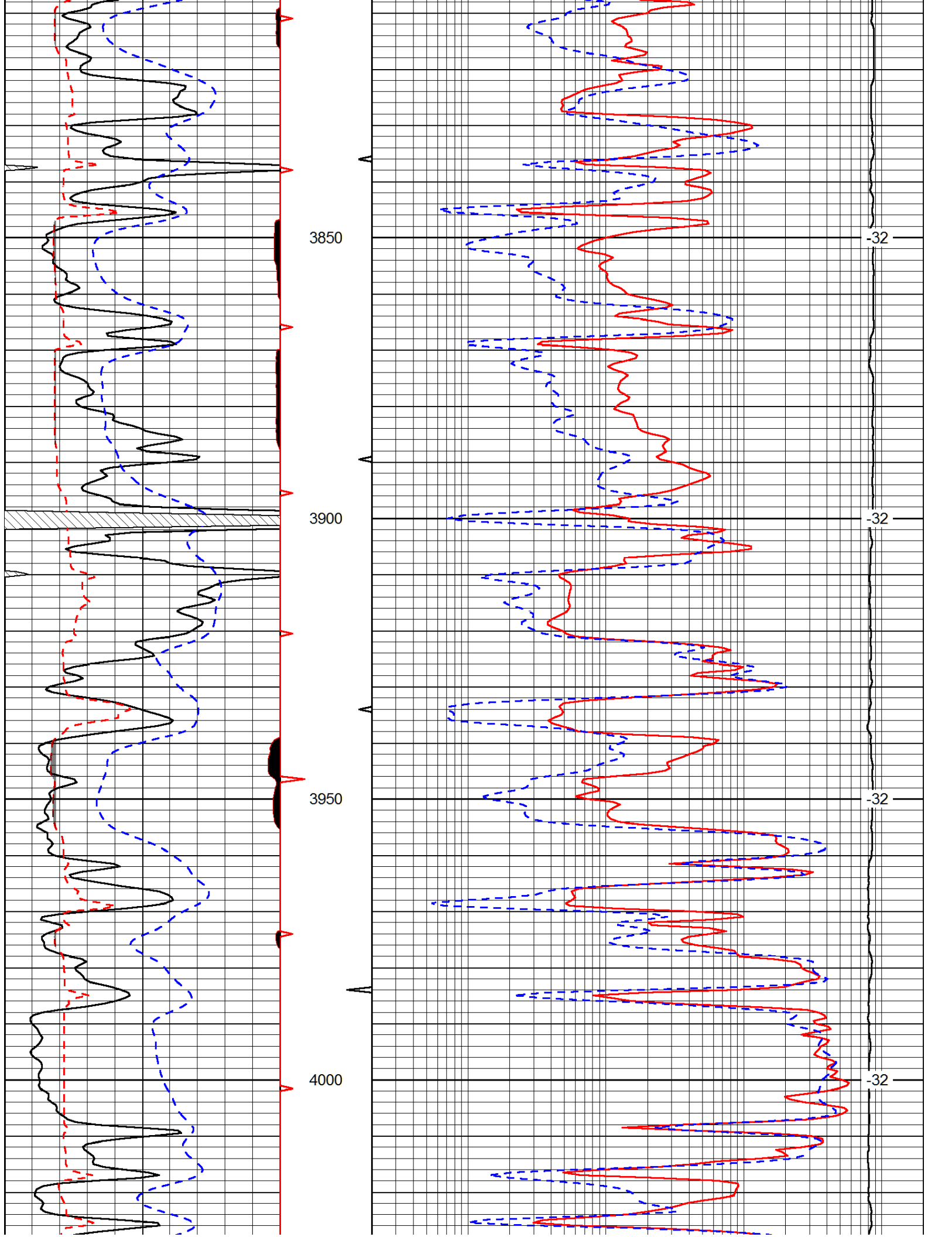
Database File: prospect_otitley_2hd.db
 Dataset Pathname: rag/prosrag
 Presentation Format: rag
 Dataset Creation: Thu Aug 01 07:46:29 2013
 Charted by: Depth in Feet scaled 1:240

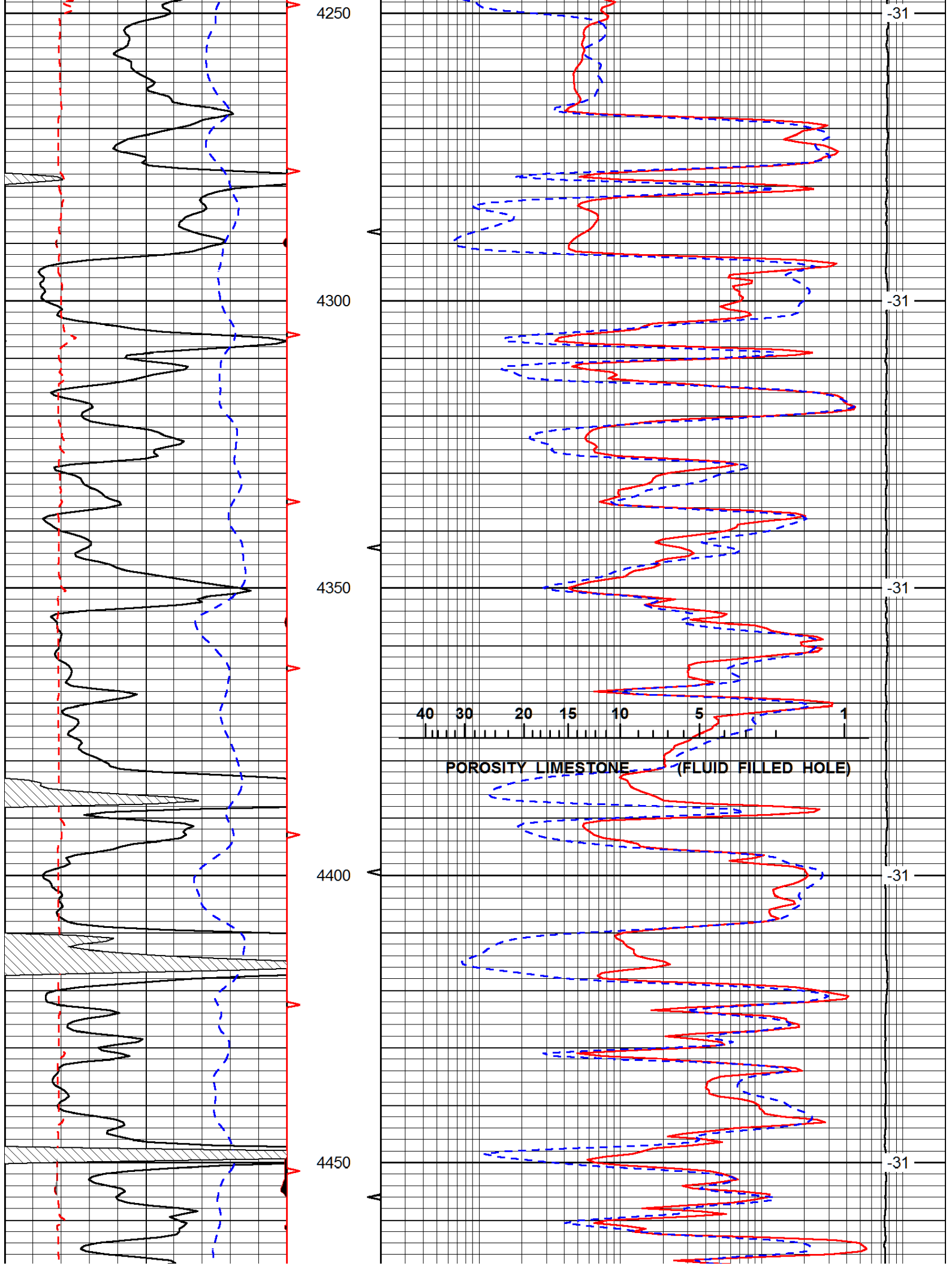
0	Gamma Ray (GAPI)	150
6	SCAL (in)	16
-200	sp (mV)	0

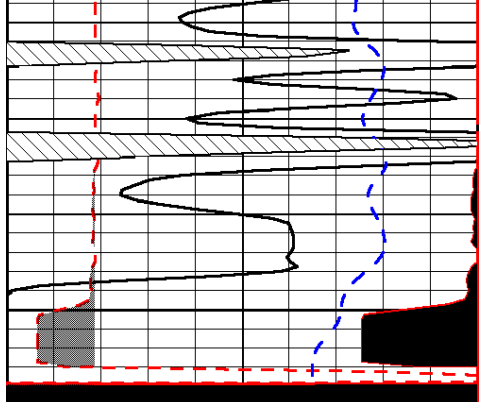
0.2	LGRD (Ohm-m)	2000
560	SWNC (NAPI)	2160
15000	Line Tension (lb)	0

LSPD

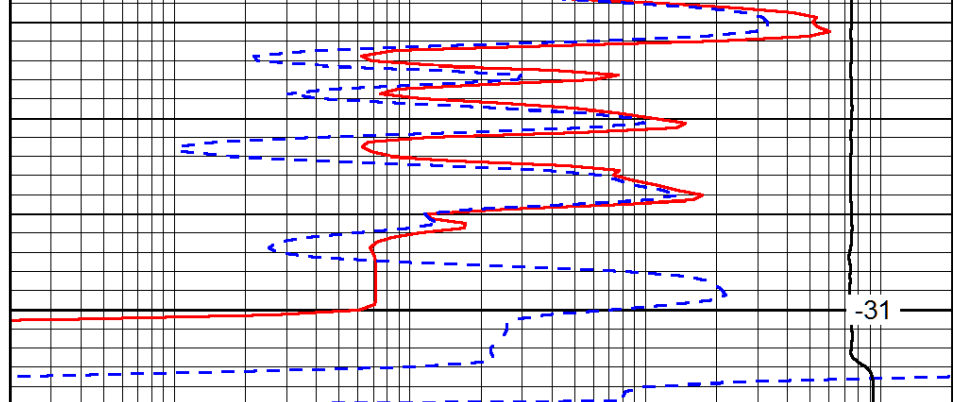








4500



-31

0	Gamma Ray (GAPI)	150
6	SCAL (in)	16
-200	sp (mV)	0

0.2	LGRD (Ohm-m)	2000
560	SWNC (NAPI)	2160
15000	Line Tension (lb)	0

LSPD
(ft/min)