



Pioneer Energy Services

Borehole Compensated Sonic Log

API No.	15-035-24541-00-00		
Company	Val Energy, Inc.		
Well	Watt #1-3		
Field	David		
County	Cowley		
Location	N2 SE SE 990' FSL / 660' FEL		
State	Kansas		
Other Services	CNL/CDL DIL/MEI		

Permanent Datum	Ground Level	Elevation	1258
Log Measured From	Kelly Bushing	10 Ft. Above Perm. Datum	
Drilling Measured From	Kelly Bushing		
Date	7/21/2013		

Run Number	Two
Type Log	BHC Sonic
Depth Driller	3525
Depth Logger	3519
Bottom Logged Interval	3508
Top Logged Interval	200
Type Fluid In Hole	Chemical
Salinity, PPM CL	2000
Density	9.4
Level	Full
Max. Rec. Temp. F	111
Operating Rig Time	4 Hours
Equipment -- Location	17 Days
Recorded By	R. Barnhart
Witnessed By	Joe Baker

Borehole Record				Casing Record			
Run No.	Bit	From	To	Size	Wgt.	From	To
One	12.25	00	220	8.625	23#	00	220
Two	7.875	220	TD				

<<< Fold Here >>>

All interpretations are opinions based on inferences from electrical or other measurements and we cannot and do not guarantee the accuracy or correctness of any interpretation, and we shall not, except in the case of gross or willful negligence on our part, be liable or responsible for any loss, costs, damages, or expenses incurred or sustained by anyone resulting from any interpretation made by any of our officers, agents or employees. These interpretations are also subject to our general terms and conditions set out in our current Price Schedule.

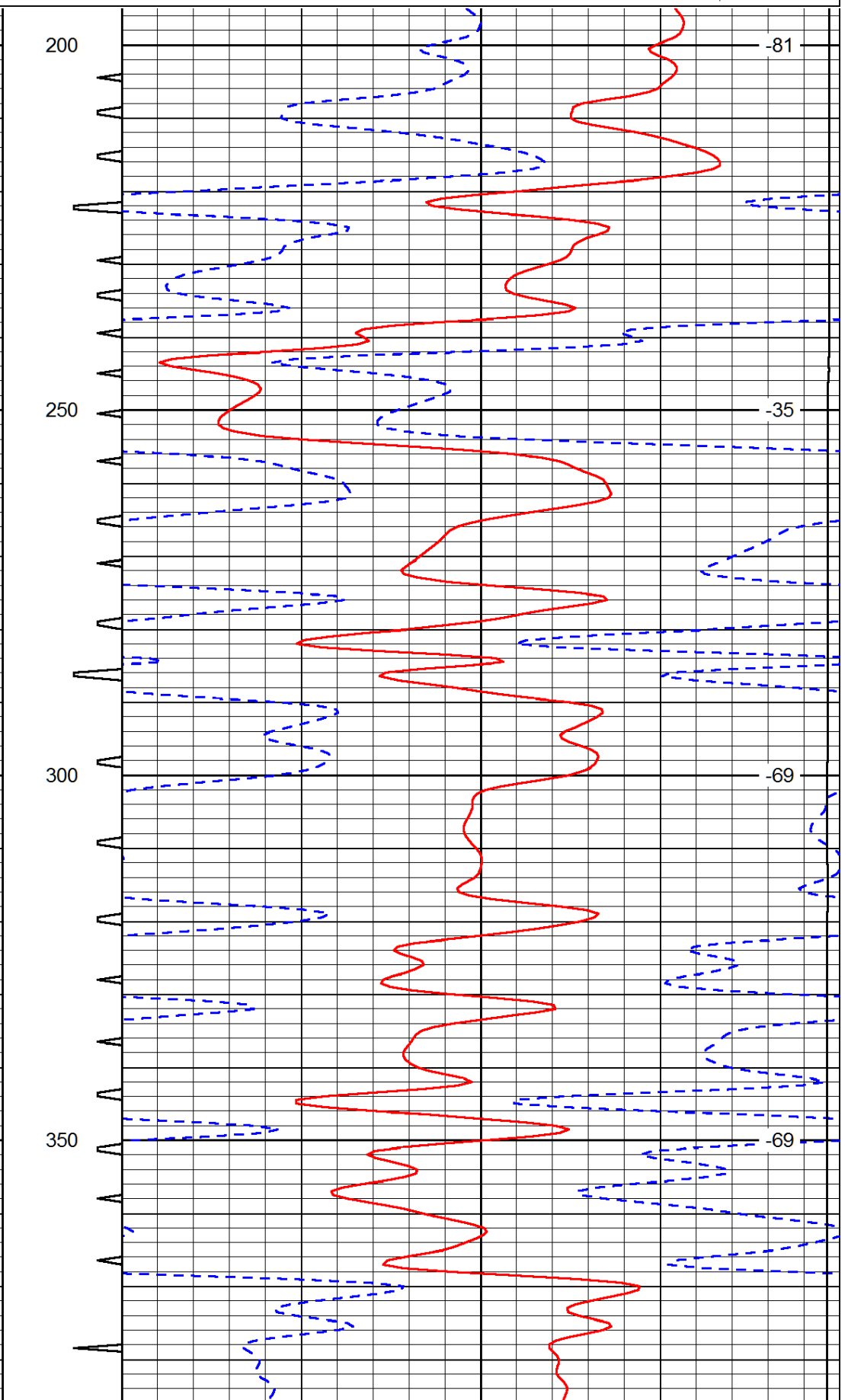
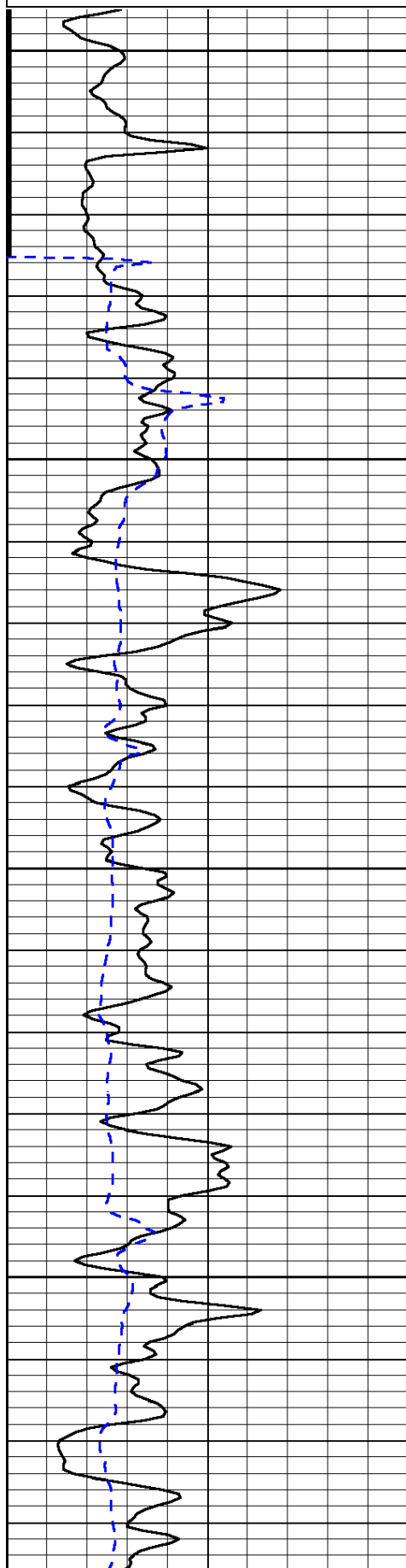
Comments

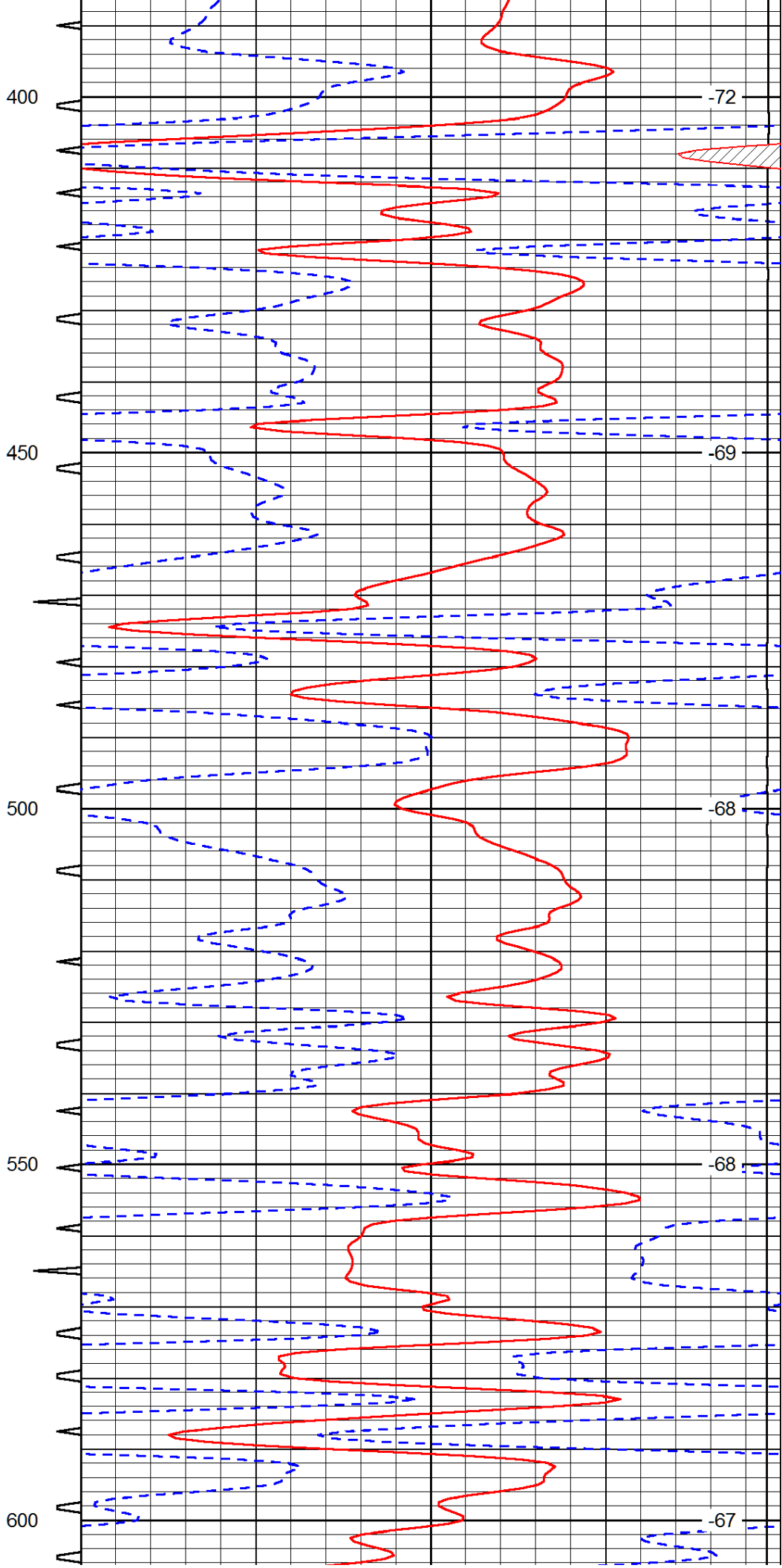
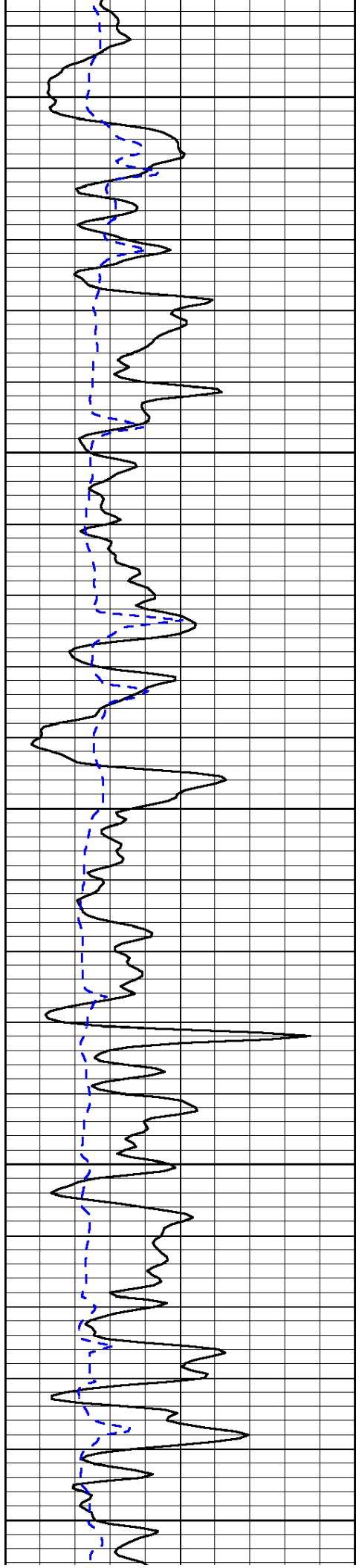
Thank you for using Log-Tech, Inc.
(785) 625-3858

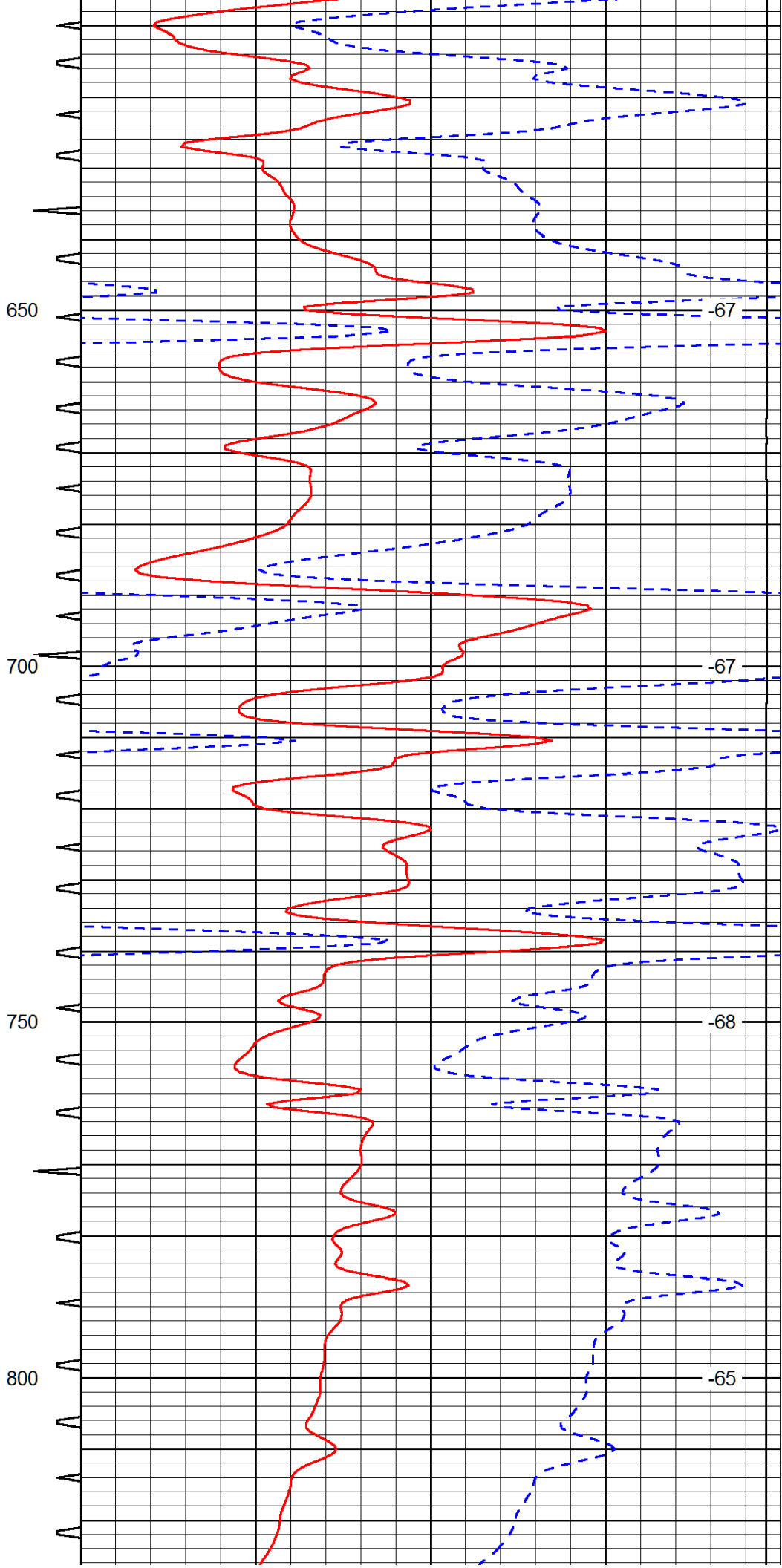
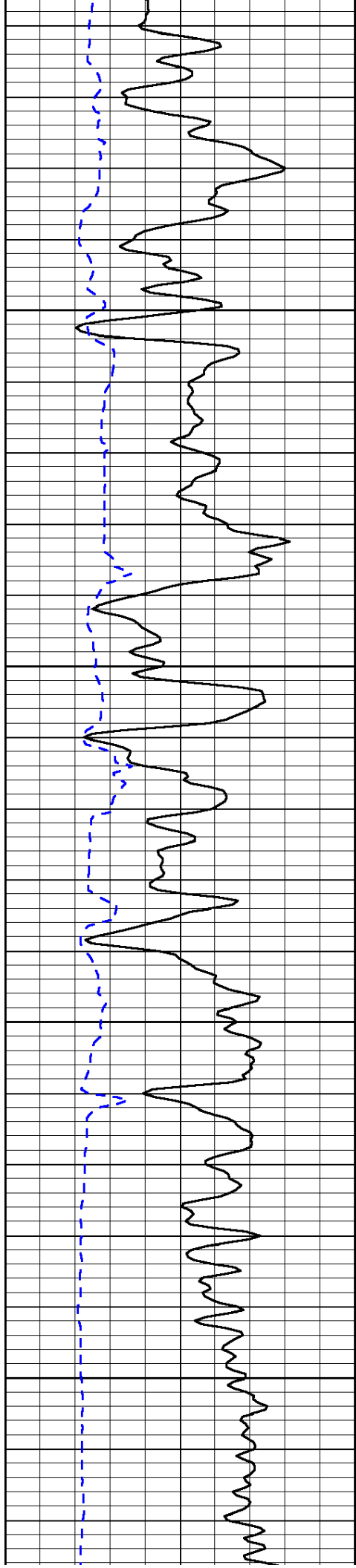
Augusta, KS:
S to Hwy. 77 & Hwy 15: 2E, 1/2S, W into

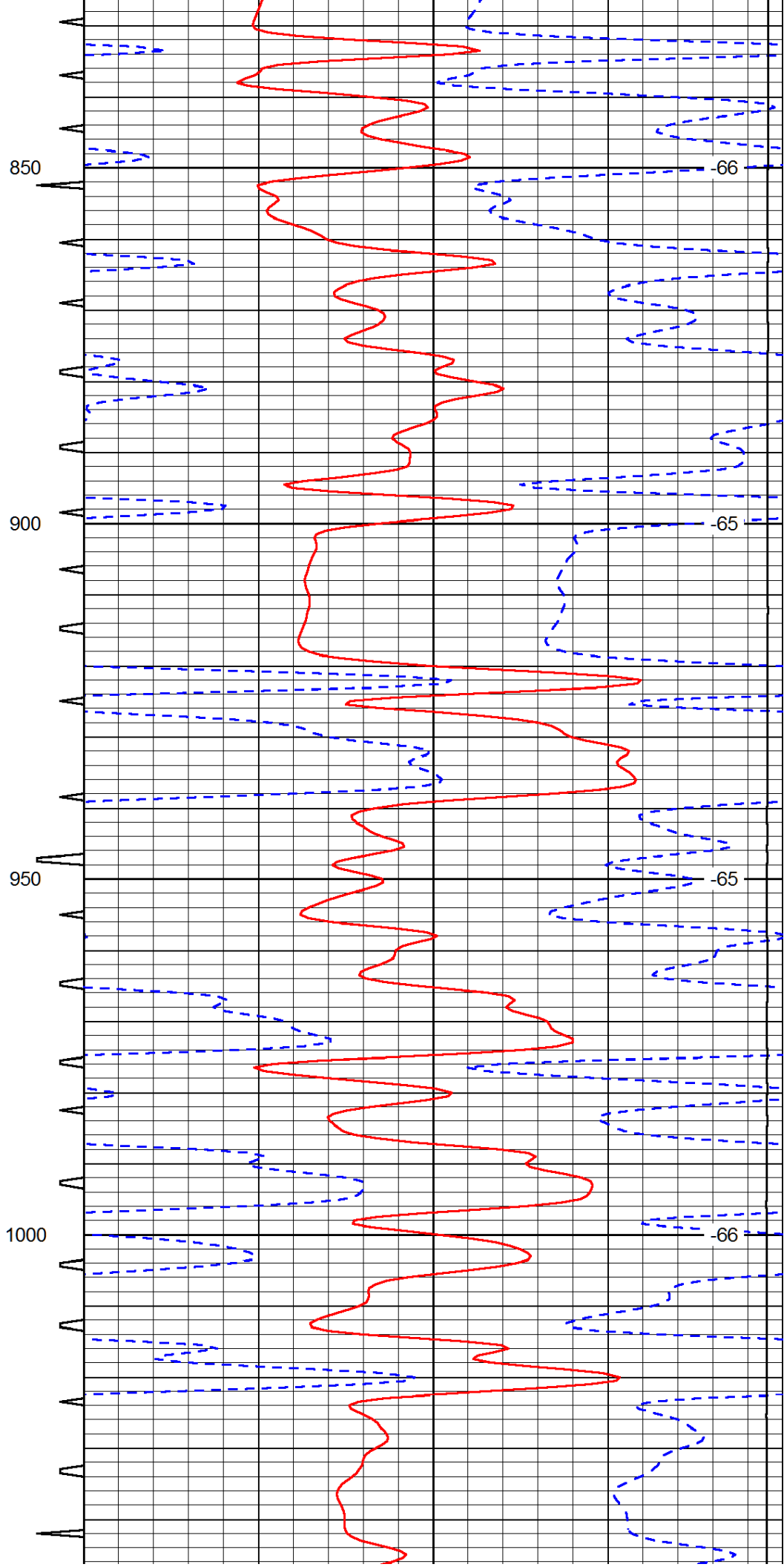
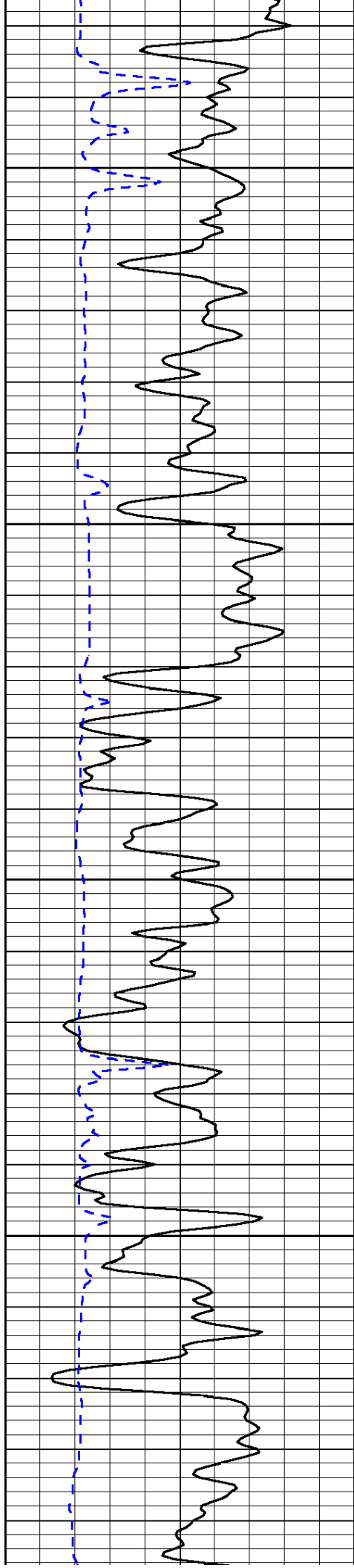
Database File: val_hd.db
 Dataset Pathname: dil/valmain
 Presentation Format: sonic
 Dataset Creation: Mon Jul 22 00:04:46 2013
 Charted by: Depth in Feet scaled 1:240

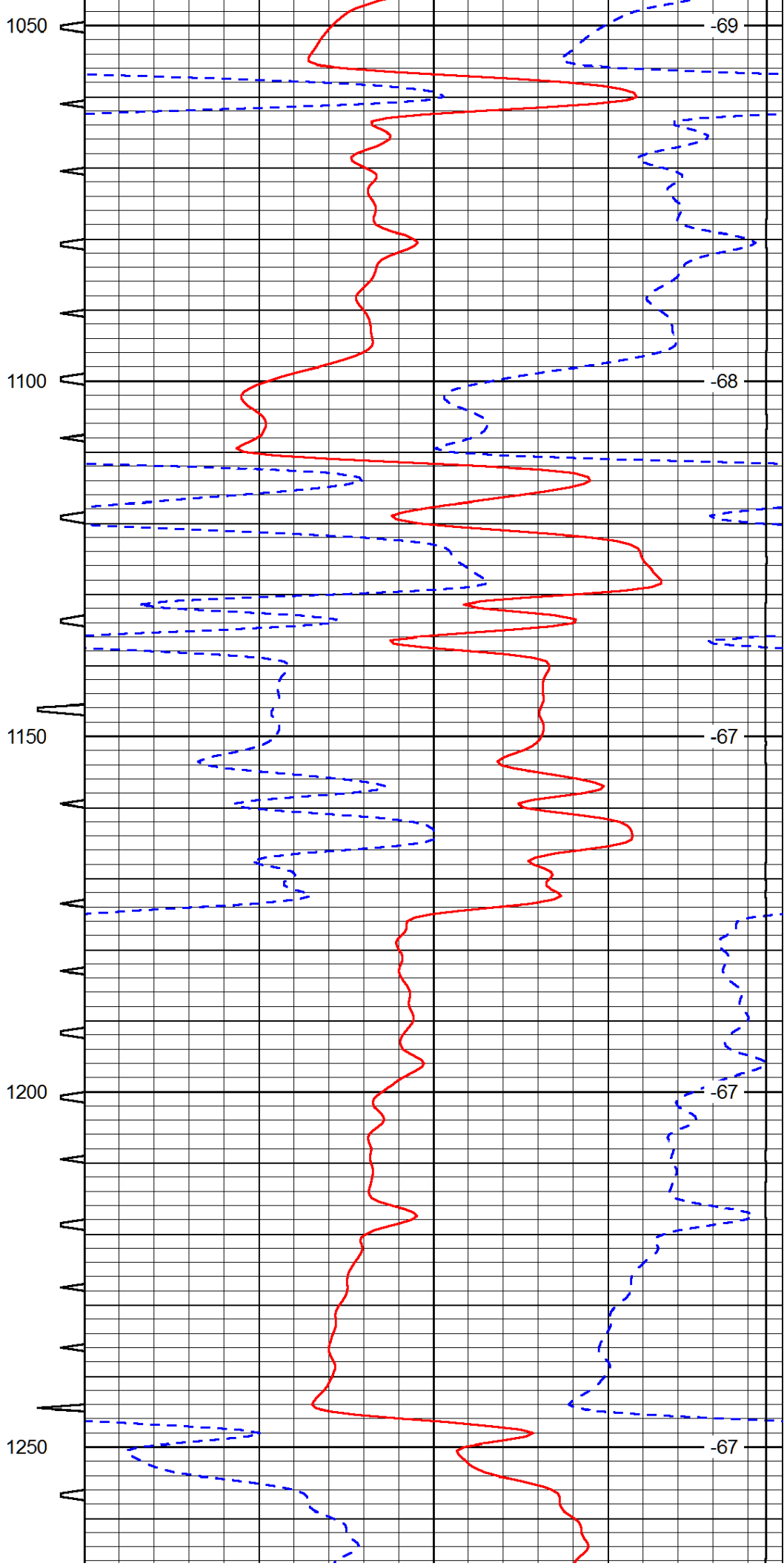
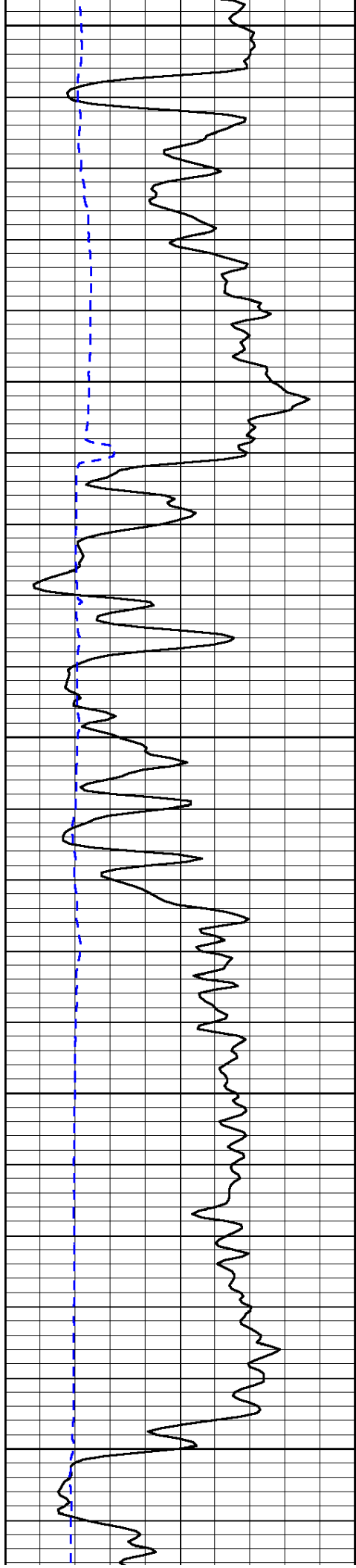
0	Gamma Ray (GAPI)	150	Sonic Int	140	Delta Time (usec/ft) (usec/ft)	40
150	Gamma Ray (GAPI)	300	5 (msec) 0	30	Sonic Porosity (pu)	-10
6	dCAL (in)	16		15000	LTEN (lb) (lb)	0
						LSPD (ft/min)

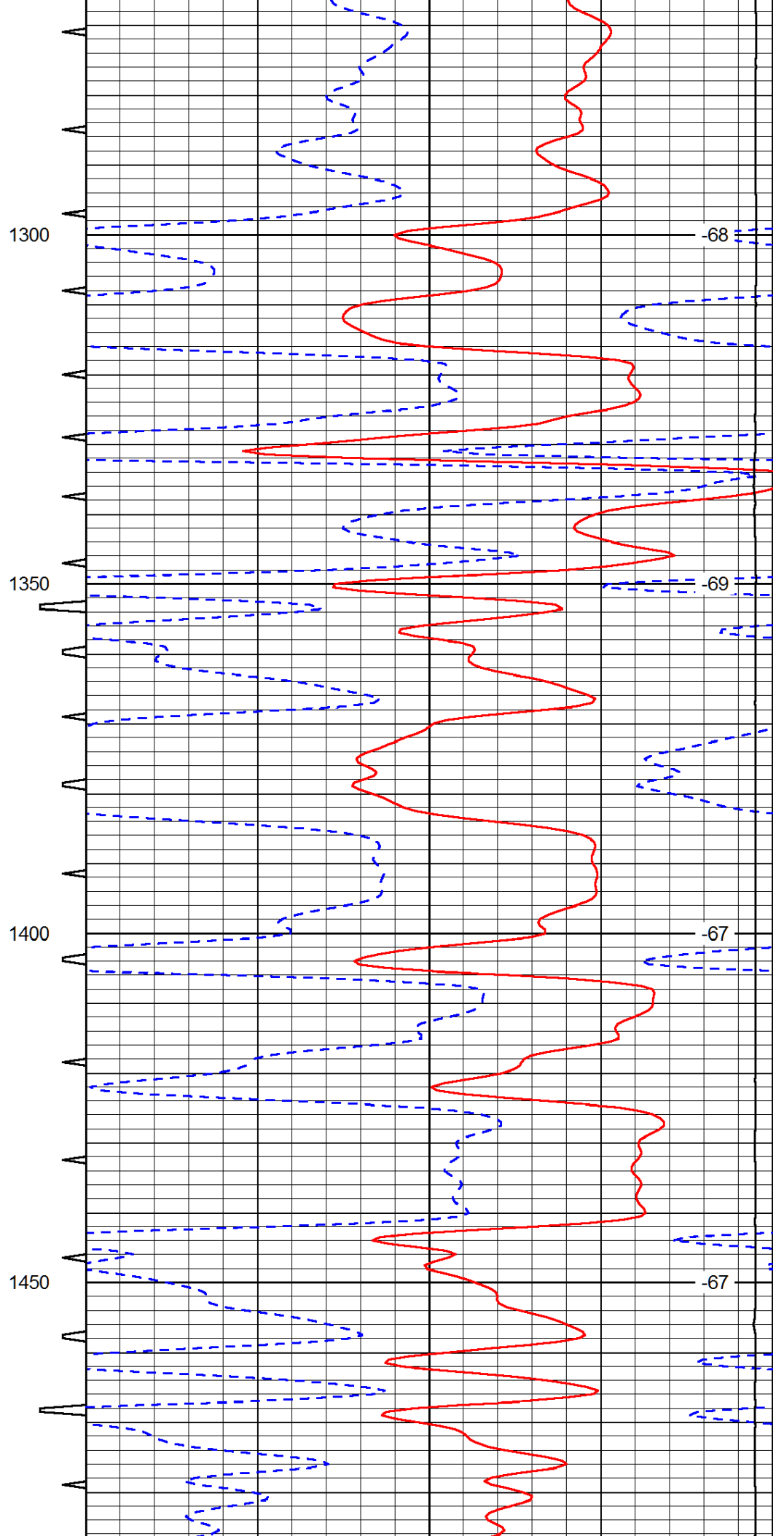
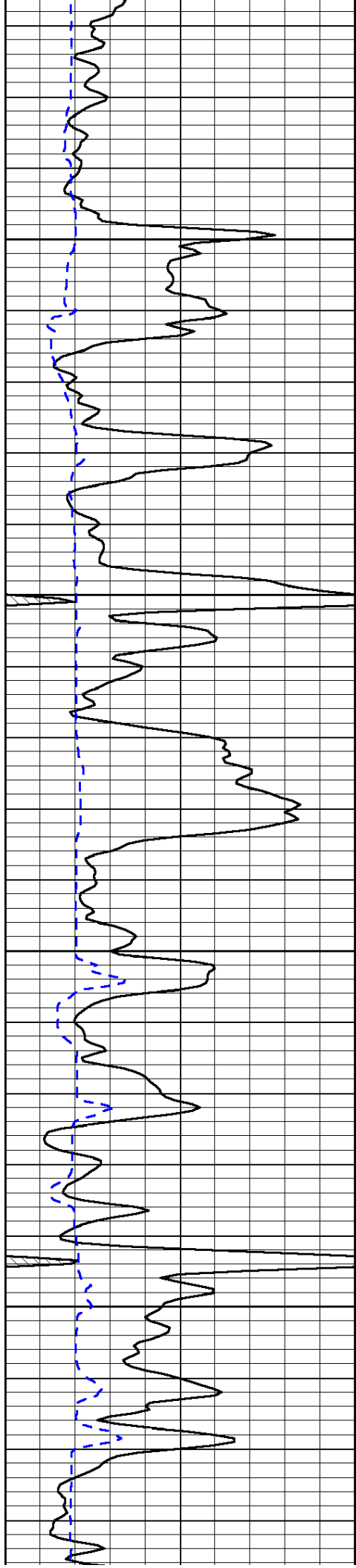


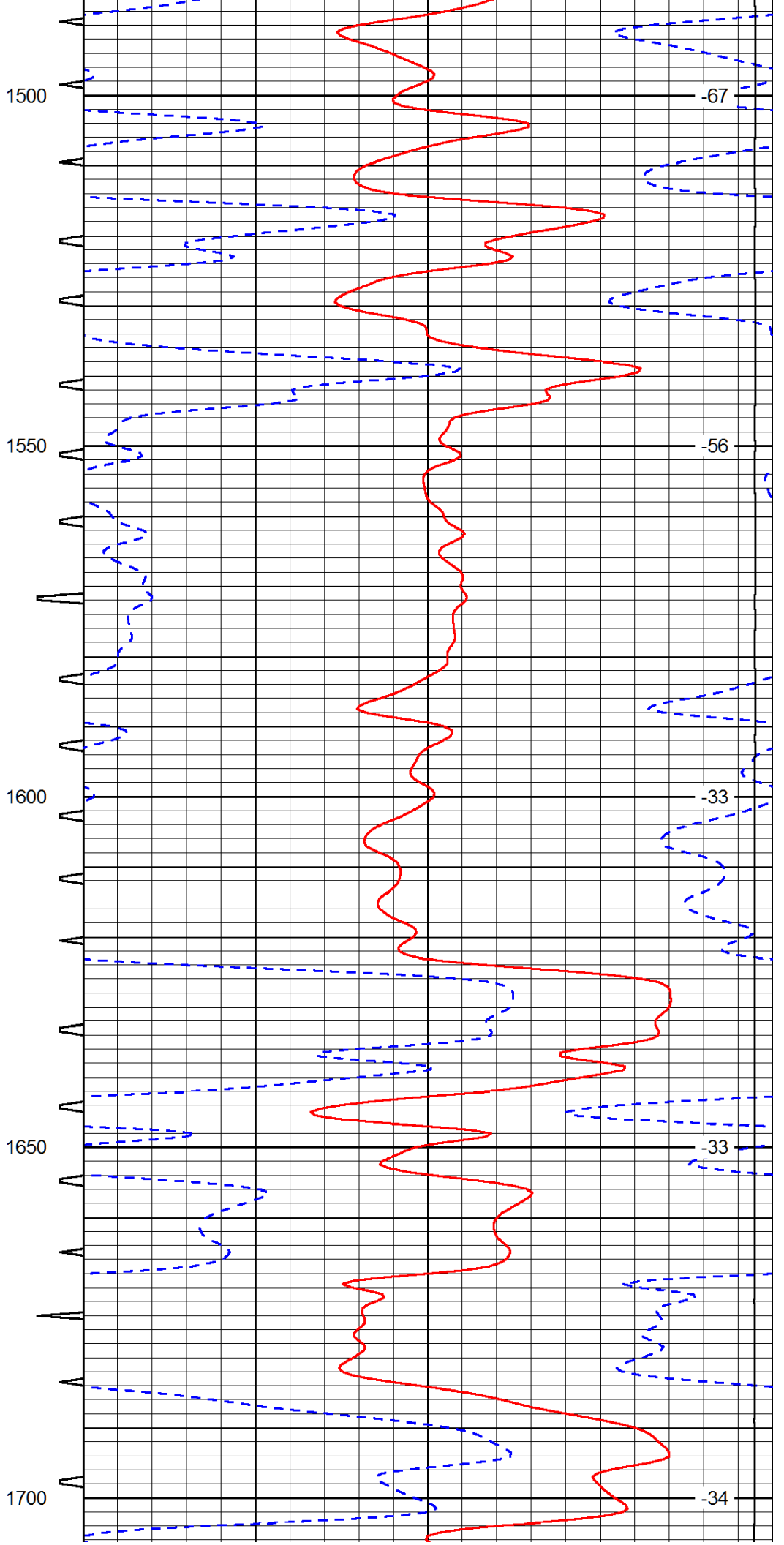
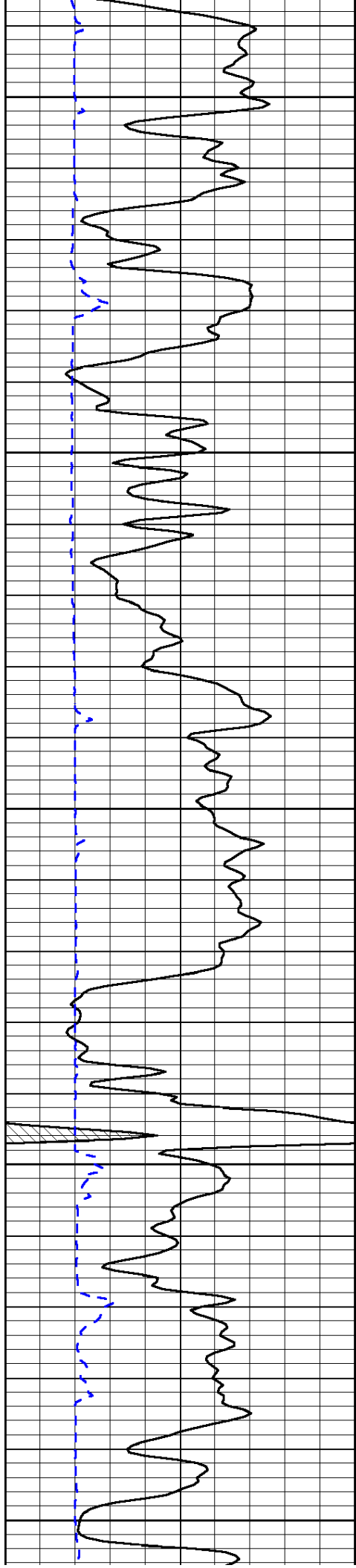


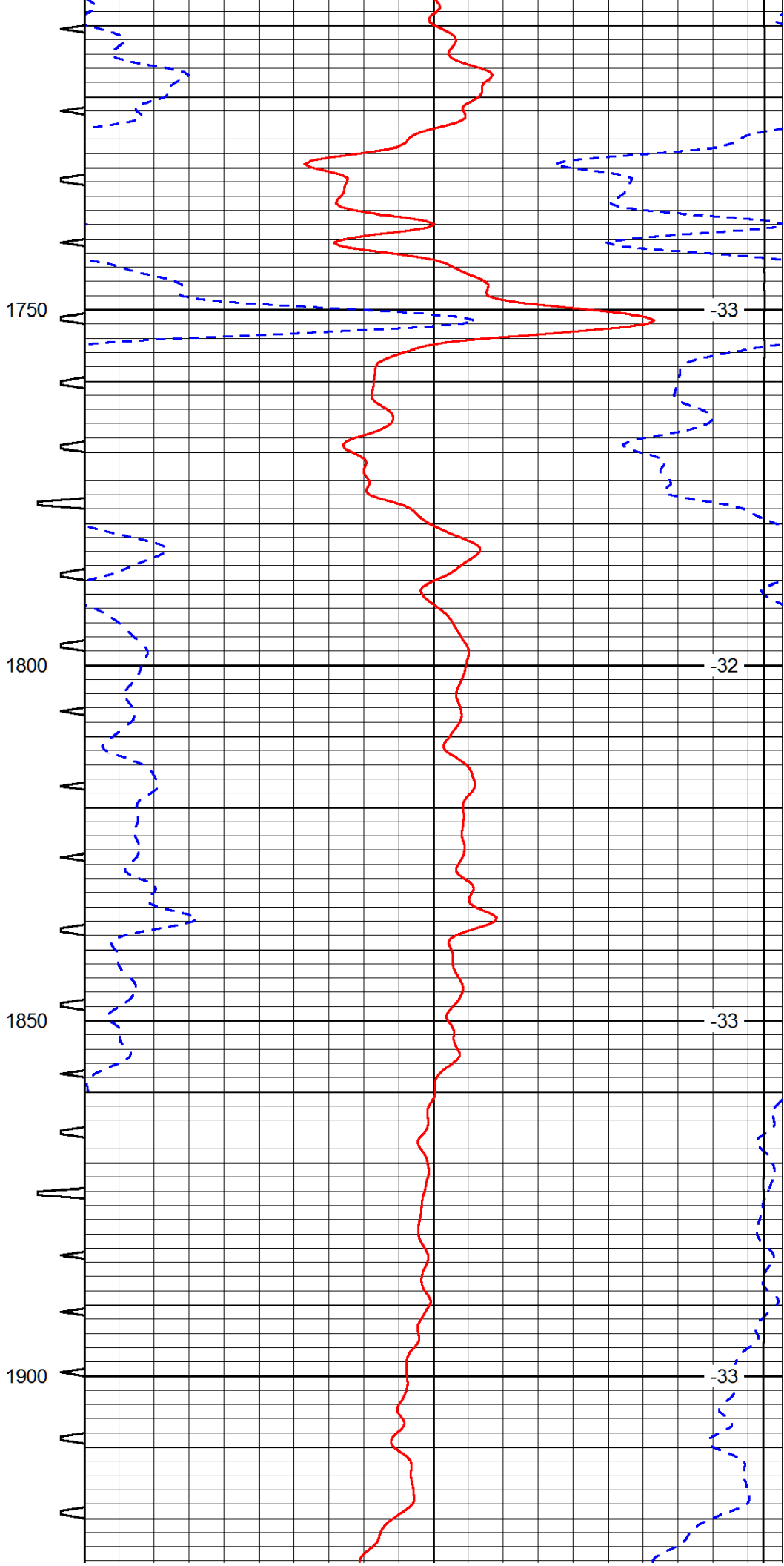
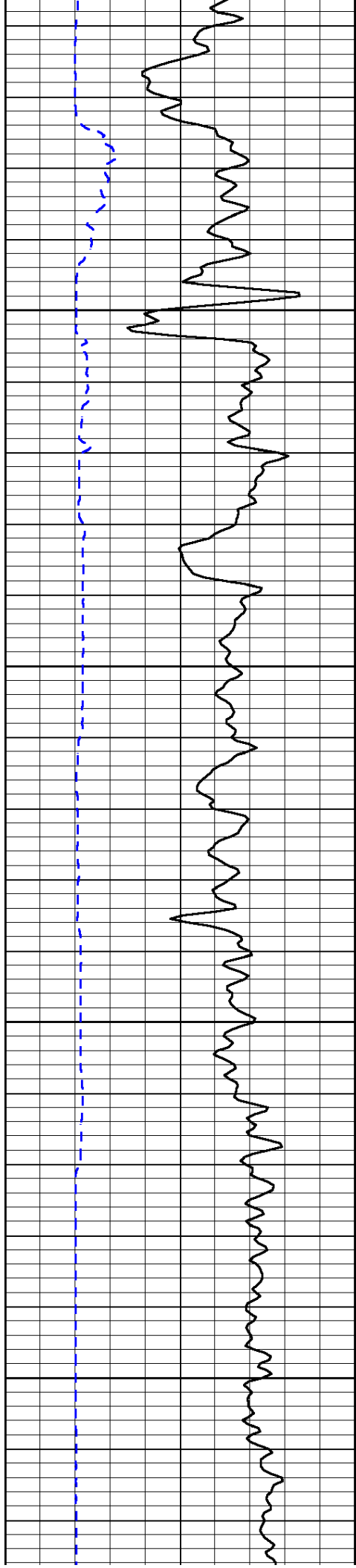


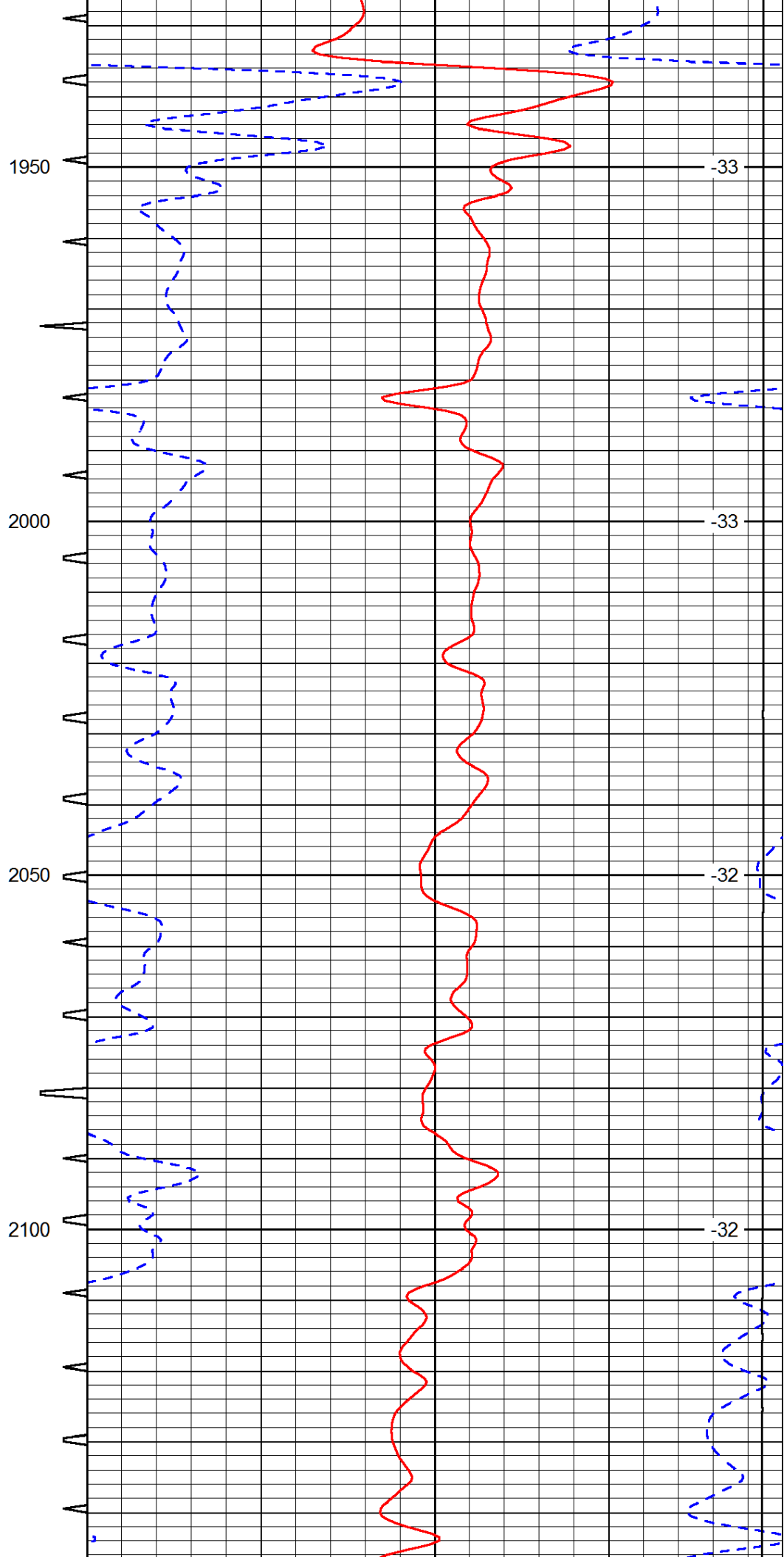
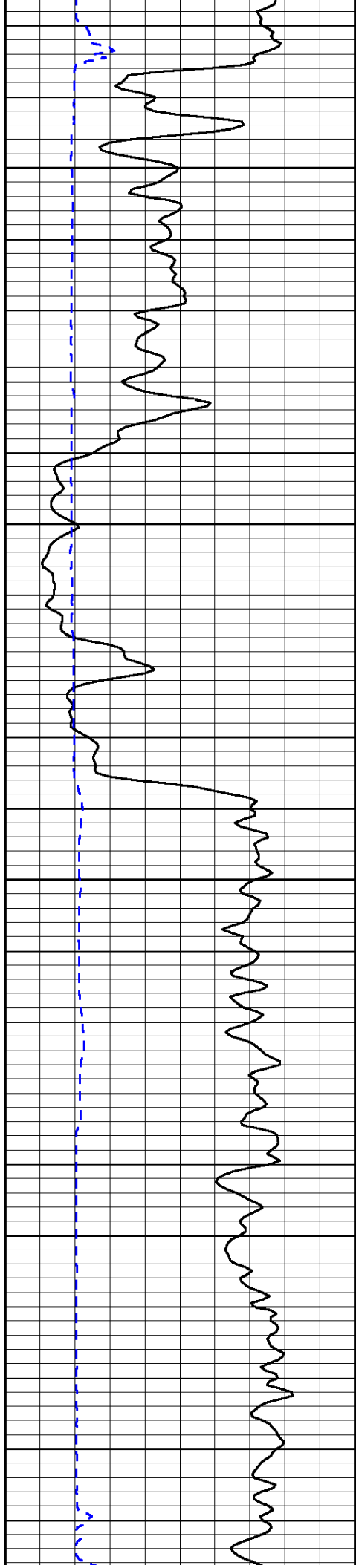


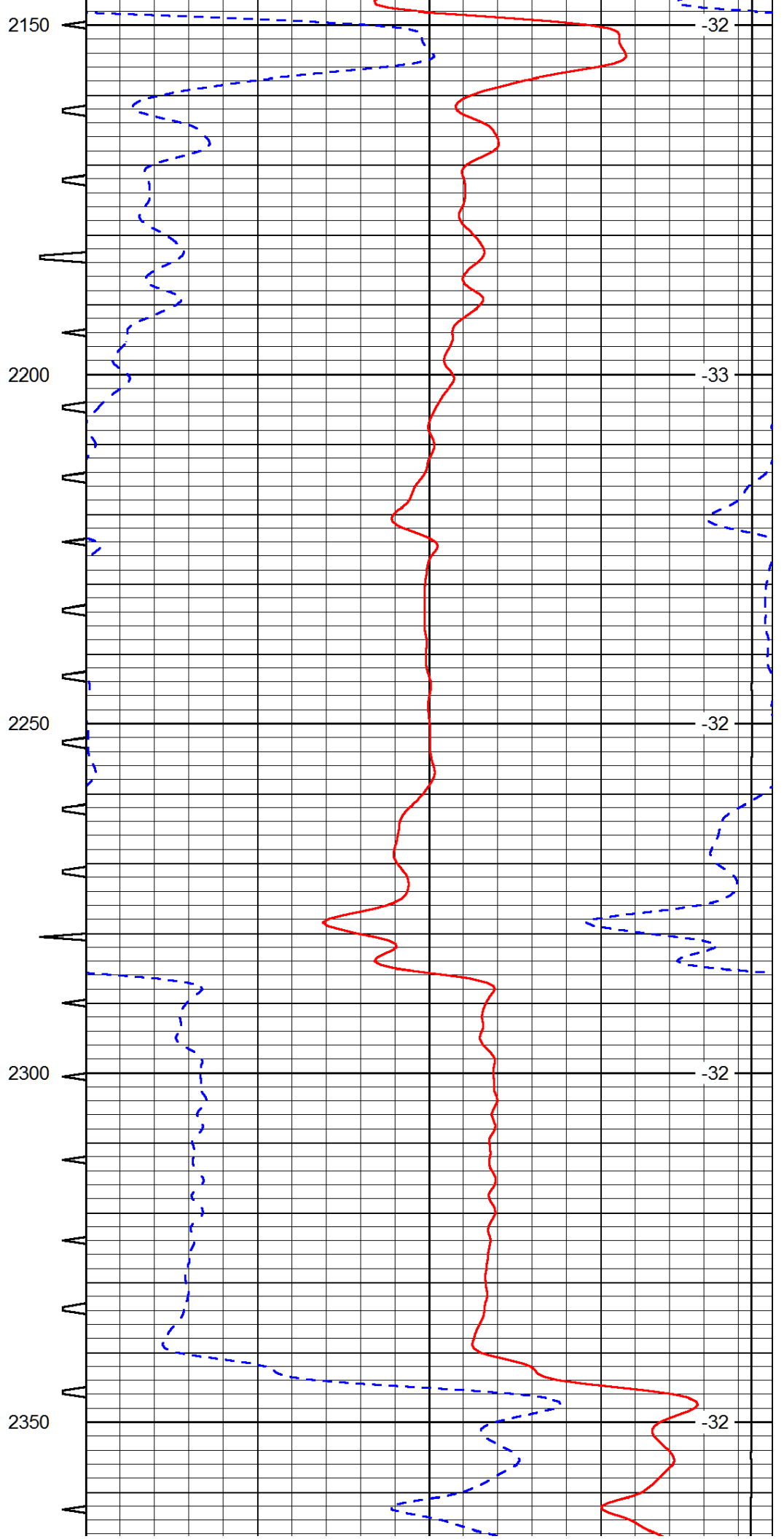
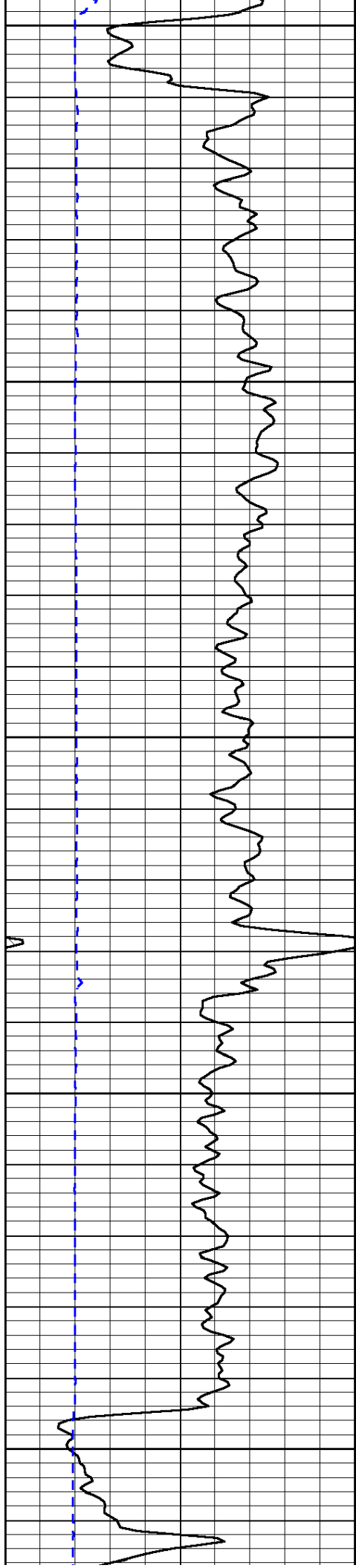


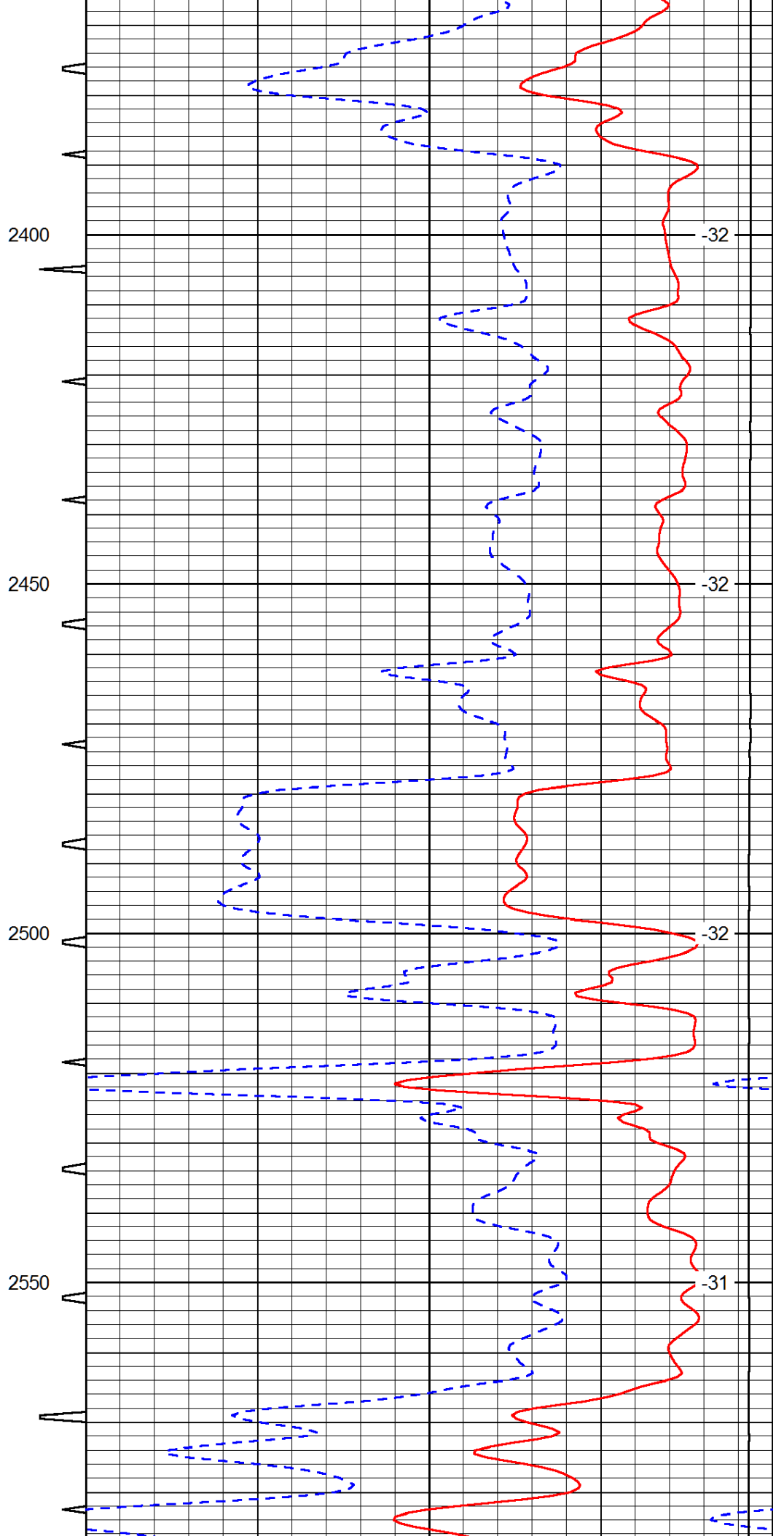
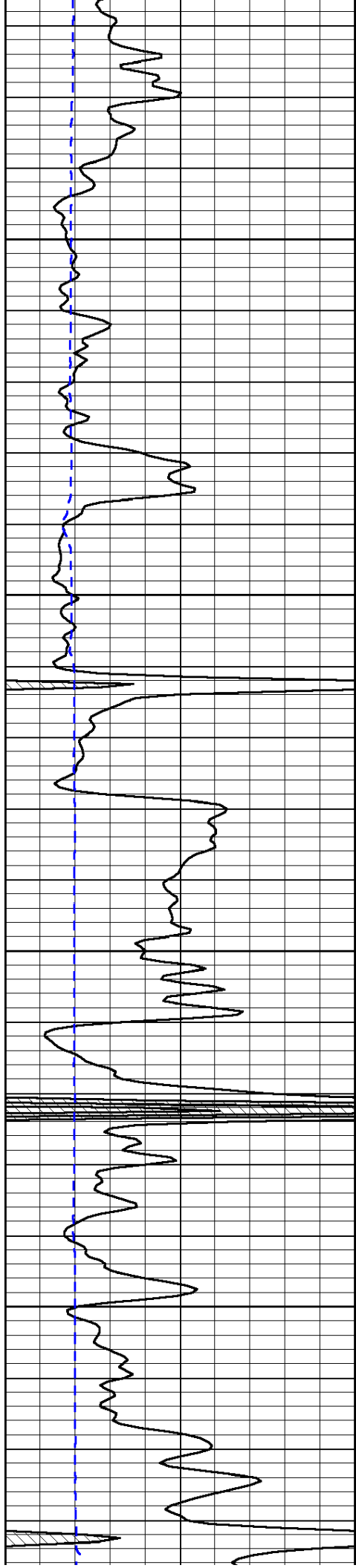


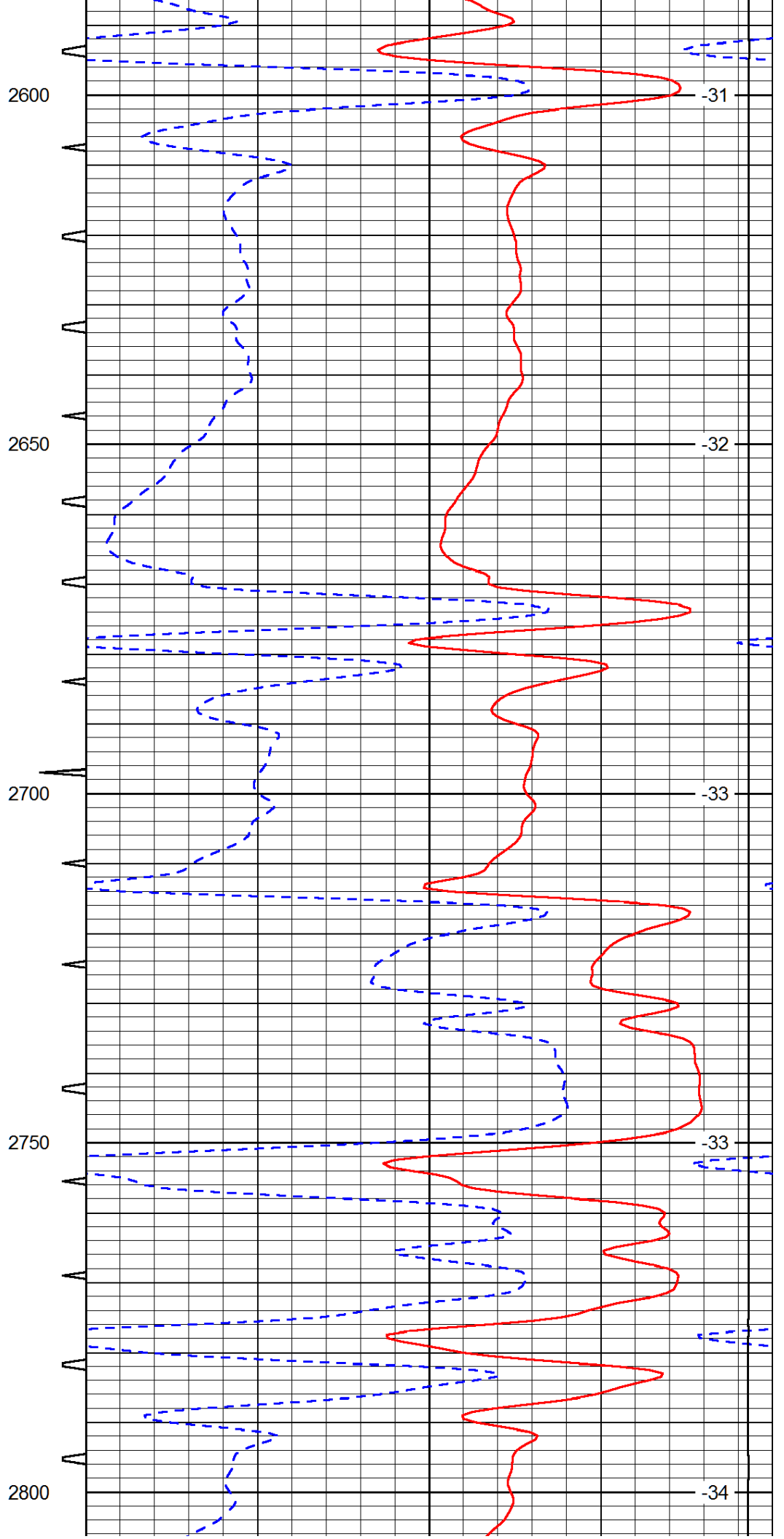
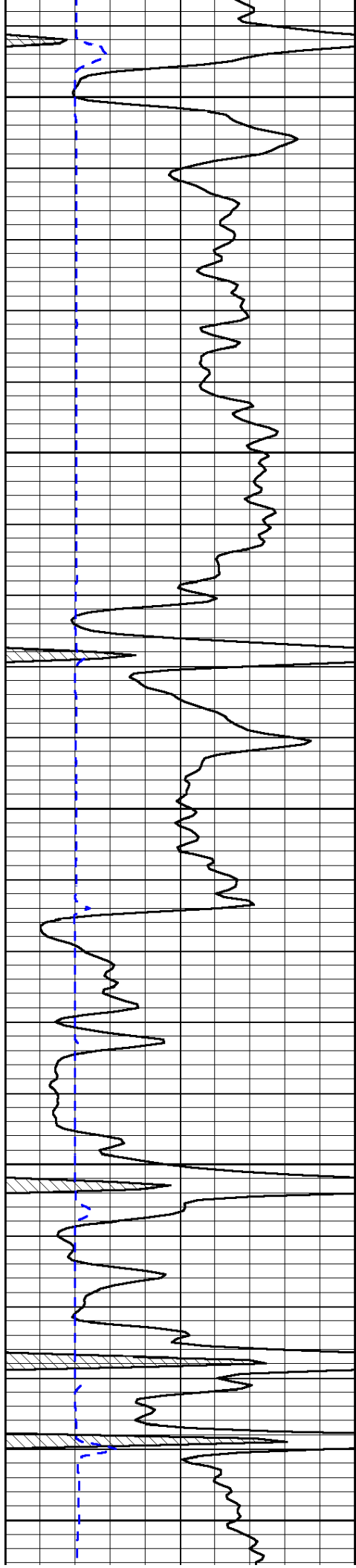


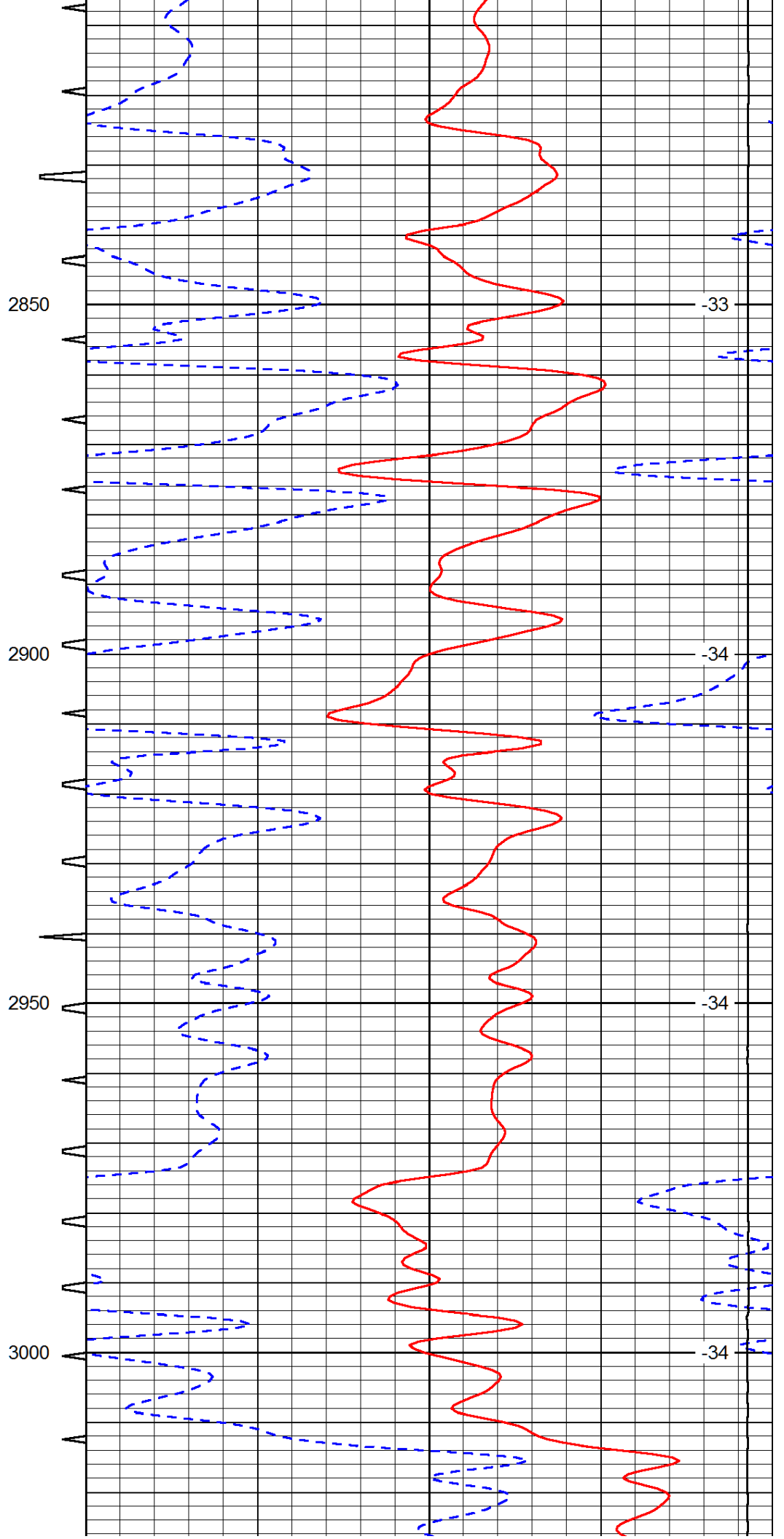
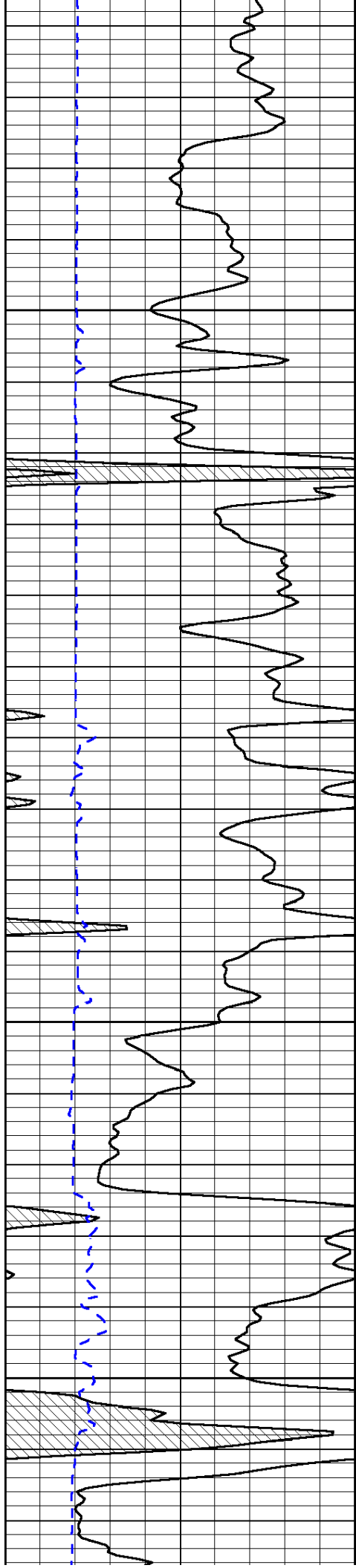


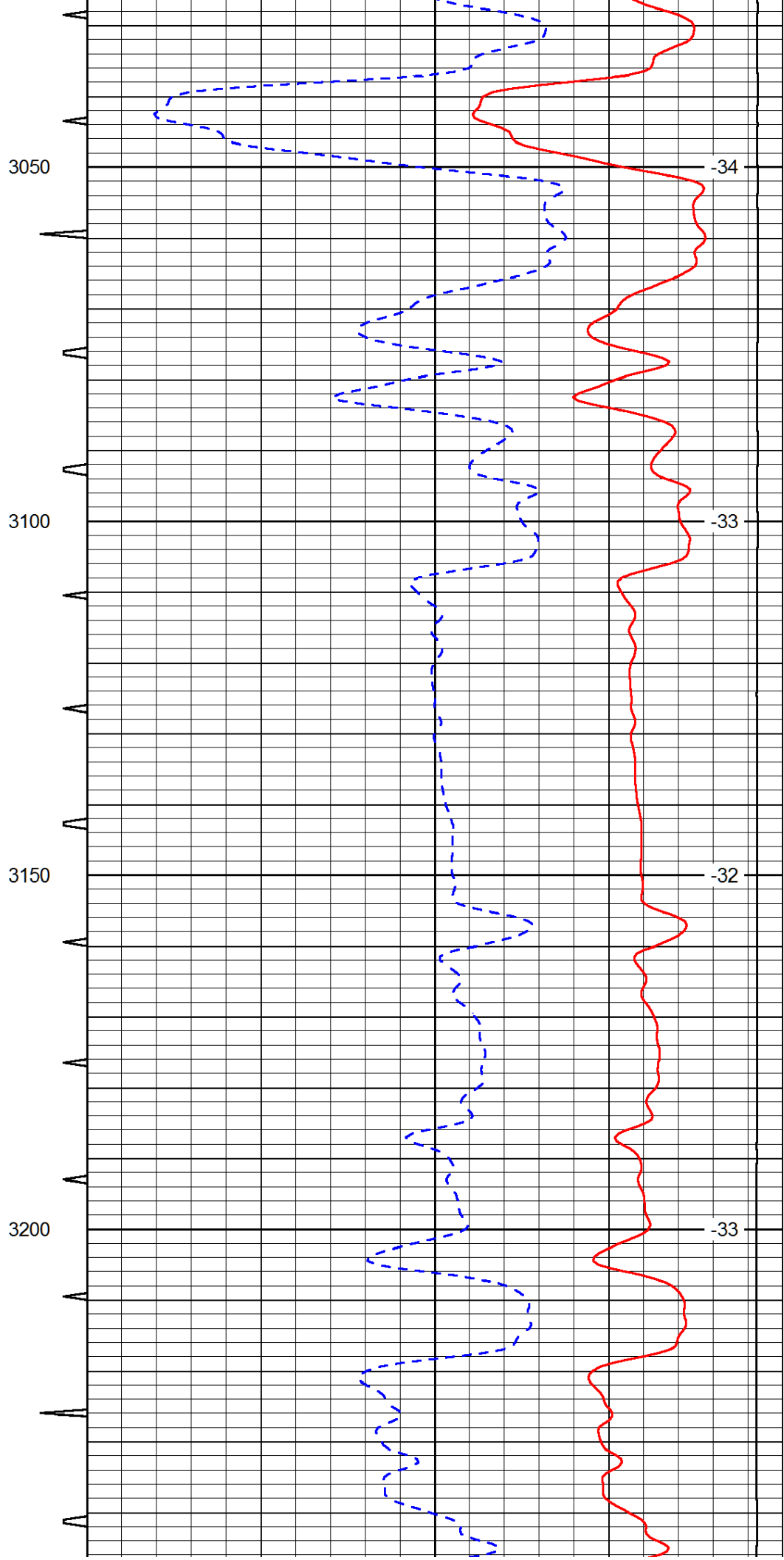
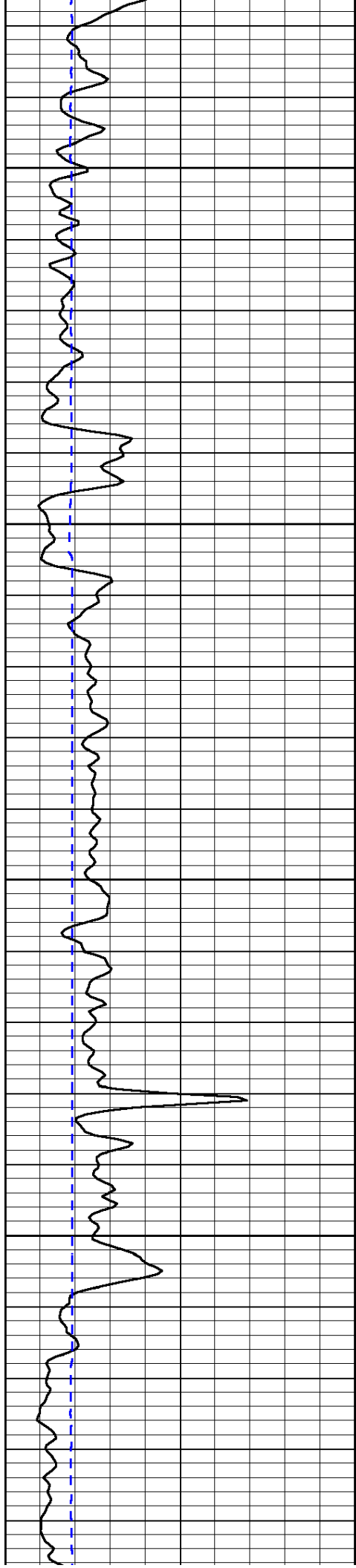


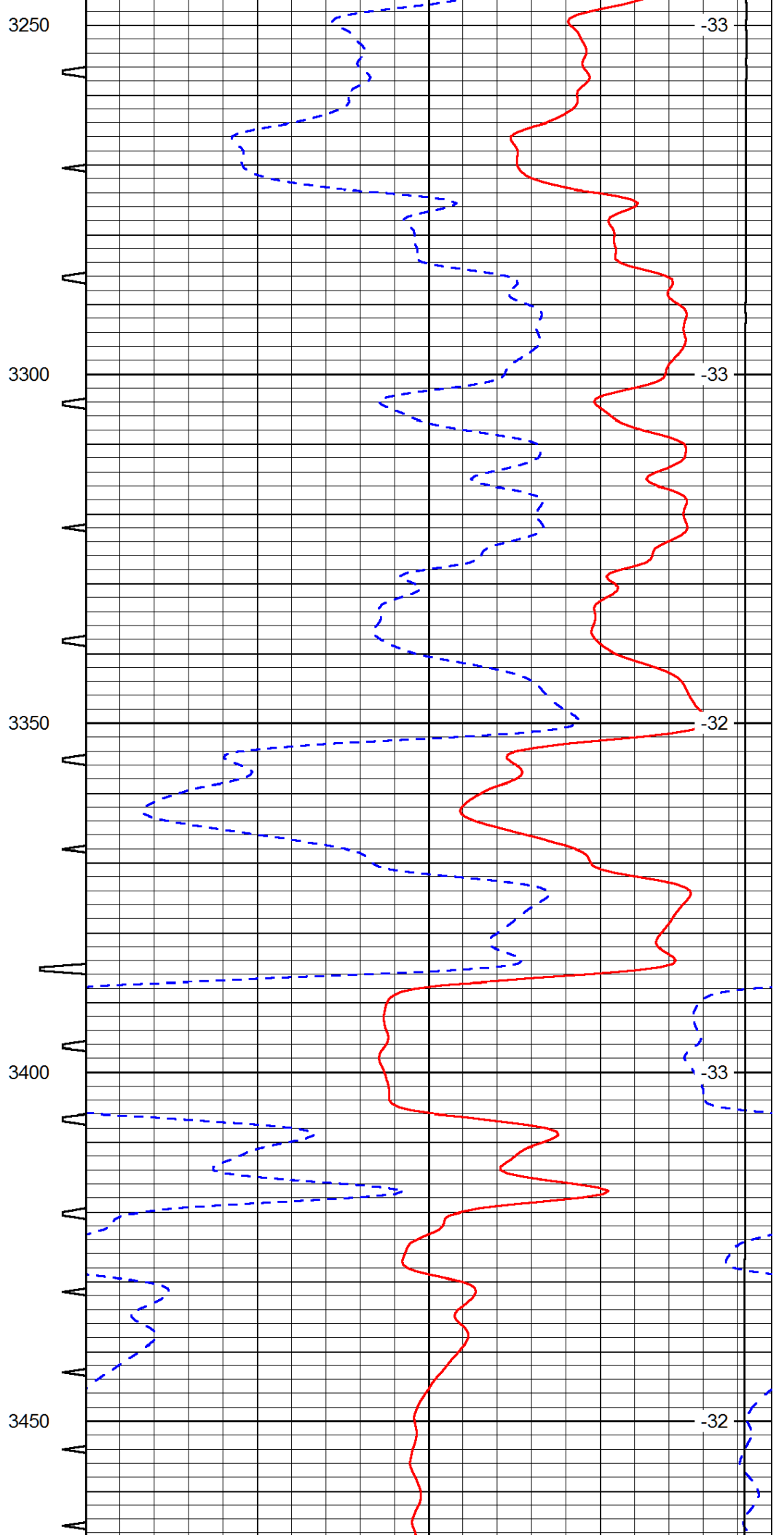
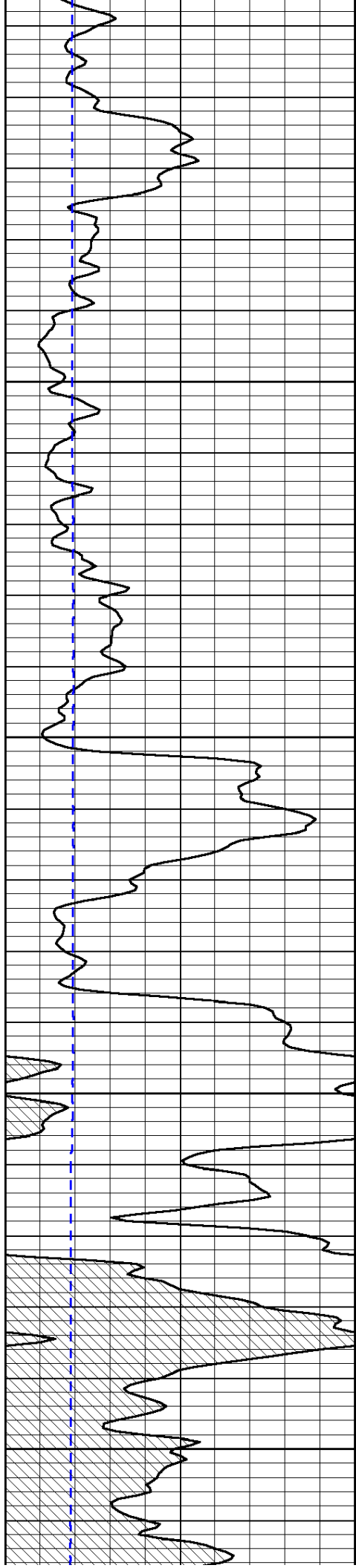


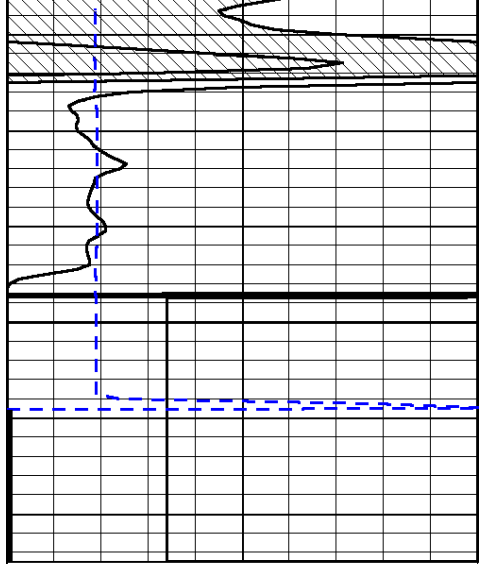




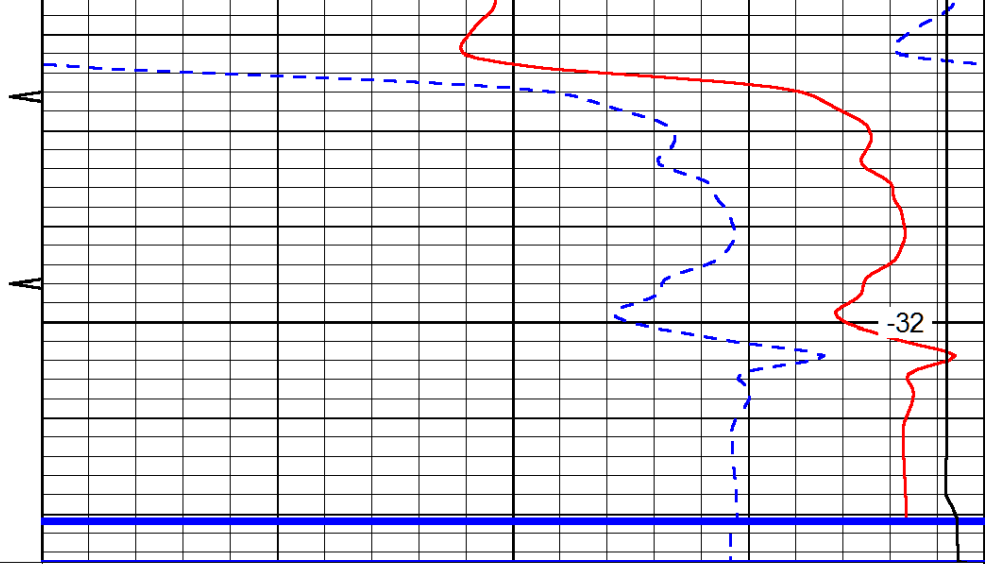








3500



0	Gamma Ray (GAPI)	150	Sonic Int	140	Delta Time (usec/ft) (usec/ft)	40
150	Gamma Ray (GAPI)	300	5 (msec) 0	30	Sonic Porosity (pu)	-10
6	dCAL (in)	16		15000	LTEN (lb) (lb)	0

LSPD
(ft/min)