



Pioneer Energy Services

Dual Compensated Porosity Log

Company Val Energy, Inc.
Well Watt #1-3
Field David
County Cowley **State** Kansas
Location N2 SE SE
 990' FSL / 660' FEL
 Sec: 3 Twp: 31S Rge: 4E
Other Services
 DIL/MEL
 BHCS

Permanent Datum Ground Level Elevation 1258
 Log Measured From Kelly Bushing 10 Ft. Above Perm. Datum
 Drilling Measured From Kelly Bushing
 Date 7/21/2013
 Elevation
 K.B. 1268
 D.F. 1258
 G.L. 1258

Run Number	One
Type Log	CNL / CDL
Depth Driller	3525
Depth Logger	3519
Bottom Logged Interval	3498
Top Logged Interval	1600
Type Fluid In Hole	Chemical
Salinity, PPM CL	2000
Density	9.4
Level	Full
Max. Rec. Temp. F	111
Operating Rig Time	4 Hours
Equipment -- Location	17 Days
Recorded By	R. Barnhart
Witnessed By	Joe Baker

Borehole Record		Casing Record	
Run No.	Bit From To	Size	Wgt. Wgt.#
One	12.25 00	8.625	23#
Two	7.875 220	TD	

<<< Fold Here >>>

All interpretations are opinions based on inferences from electrical or other measurements and we cannot and do not guarantee the accuracy or correctness of any interpretation, and we shall not, except in the case of gross or willful negligence on our part, be liable or responsible for any loss, costs, damages, or expenses incurred or sustained by anyone resulting from any interpretation made by any of our officers, agents or employees. These interpretations are also subject to our general terms and conditions set out in our current Price Schedule.

Comments

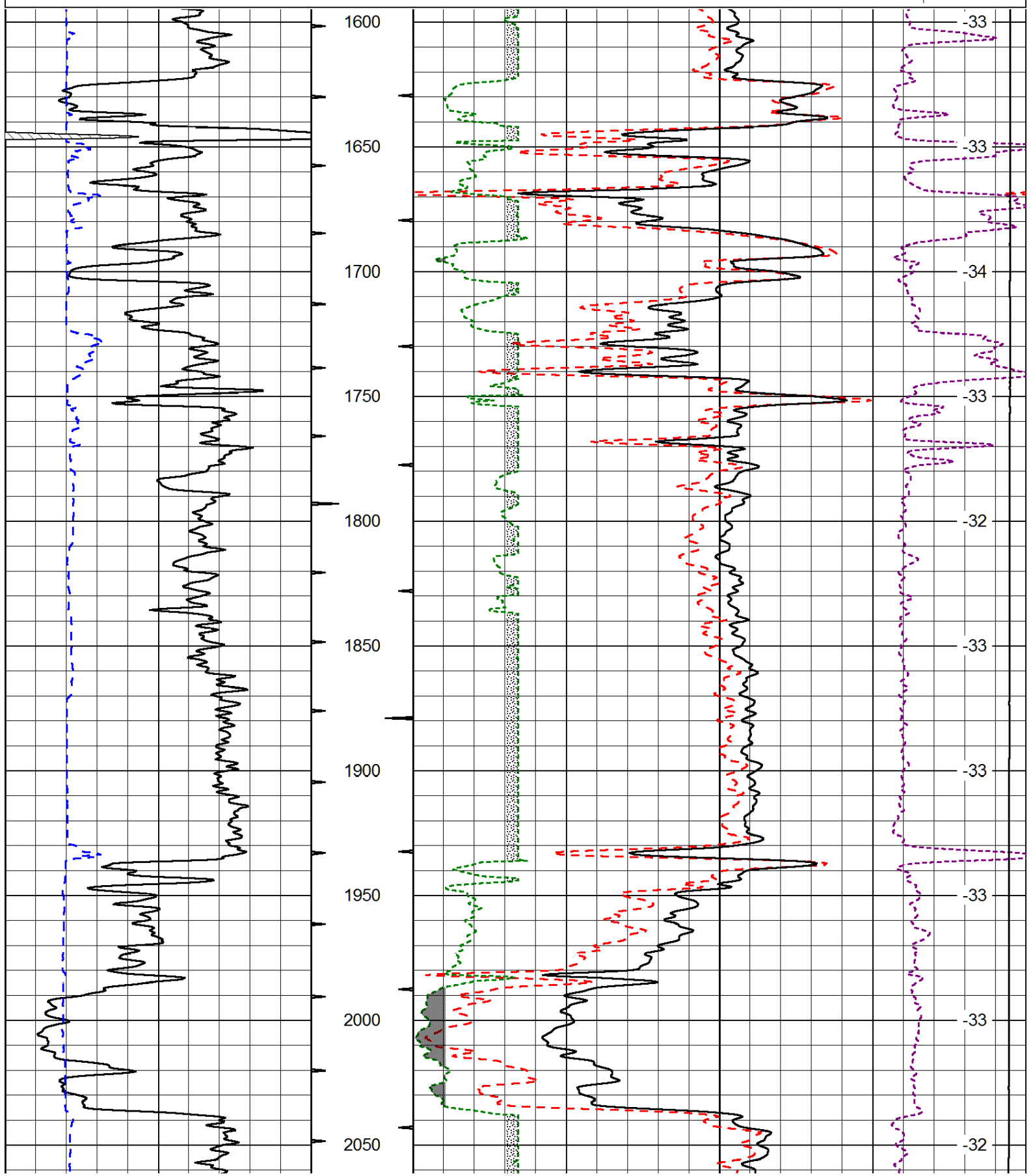
Thank you for using Log-Tech, Inc.
 (785) 625-3858

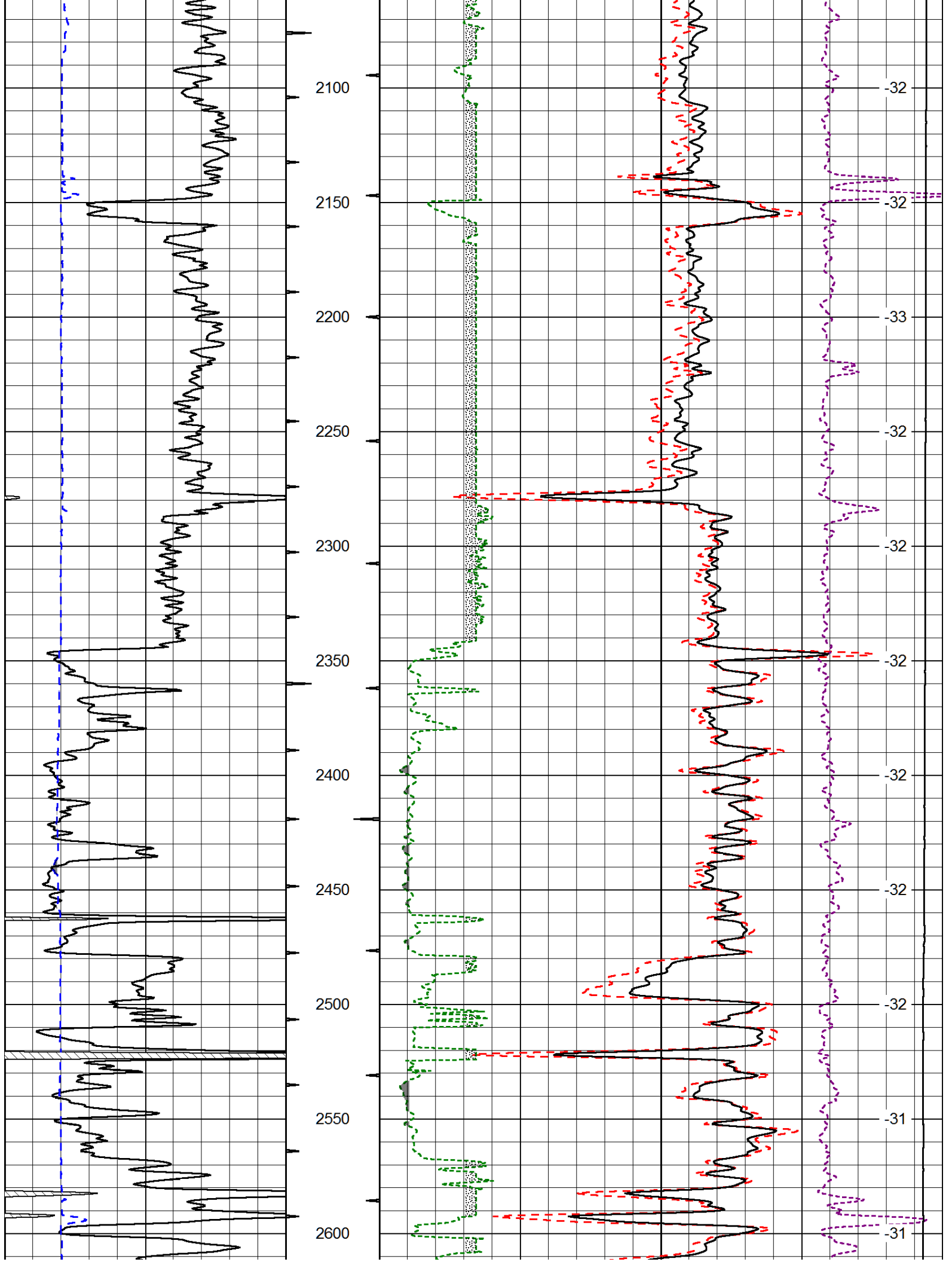
 Augusta, KS:
 S to Hwy. 77 & Hwy 15: 2E, 1/2S, W into

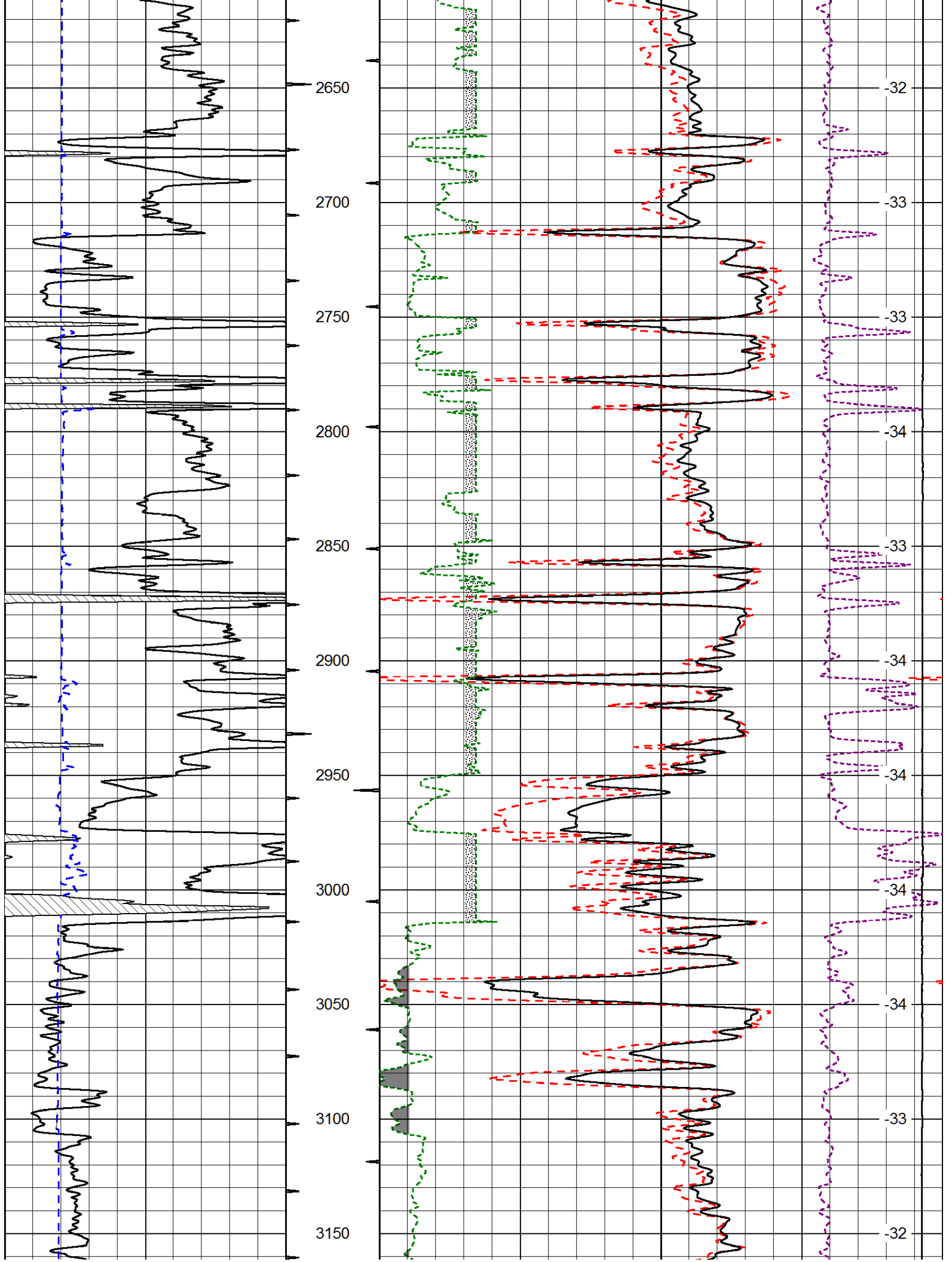
Database File: val_hd.db
 Dataset Pathname: dil/valmain
 Presentation Format: cdl
 Dataset Creation: Mon Jul 22 00:04:46 2013
 Charted by: Depth in Feet scaled 1:600

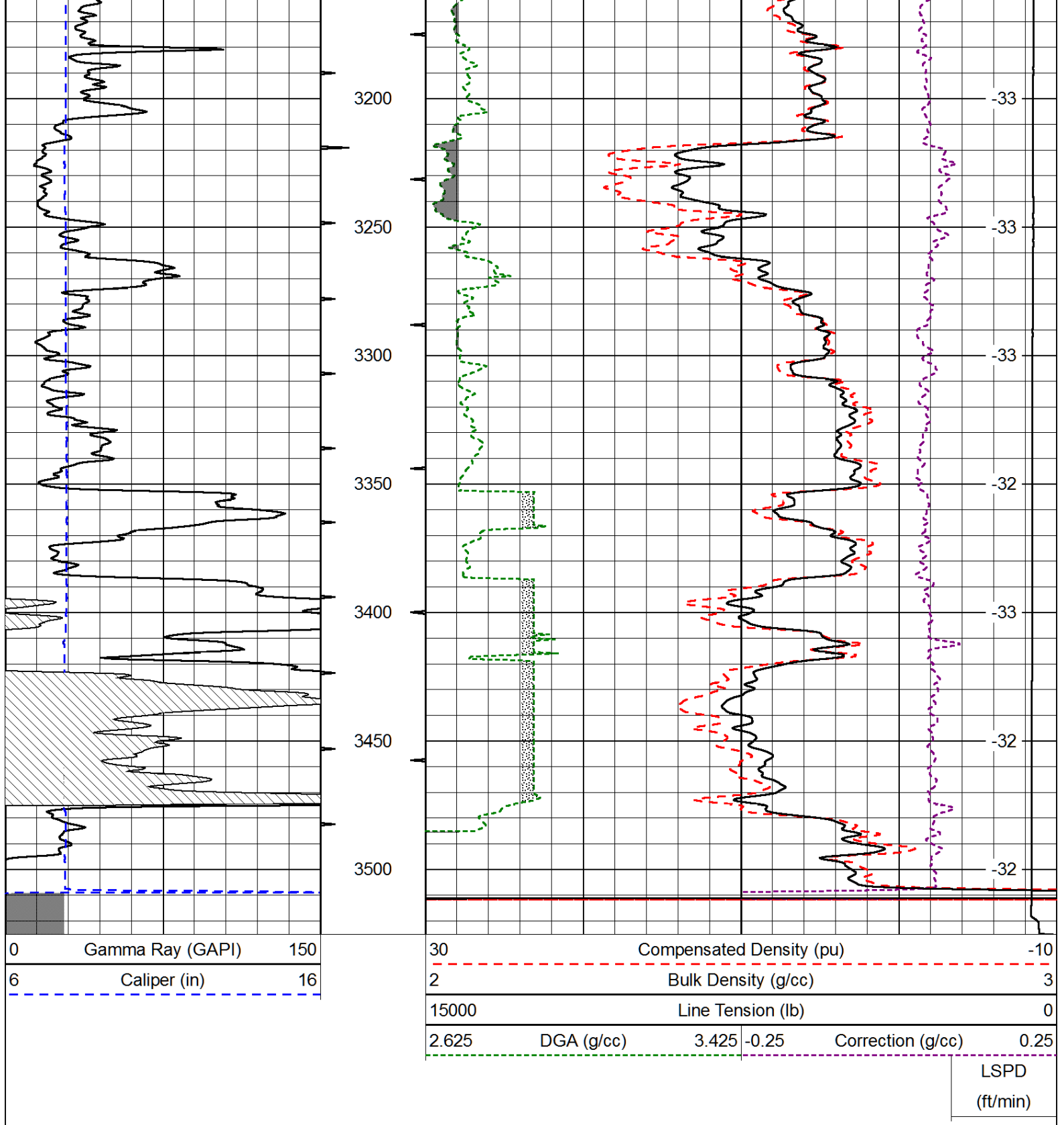
0	Gamma Ray (GAPI)	150
6	Caliper (in)	16

30	Compensated Density (pu)		-10
2	Bulk Density (g/cc)		3
15000	Line Tension (lb)		0
2.625	DGA (g/cc)	3.425	-0.25
	Correction (g/cc)		0.25
	LSPD (ft/min)		

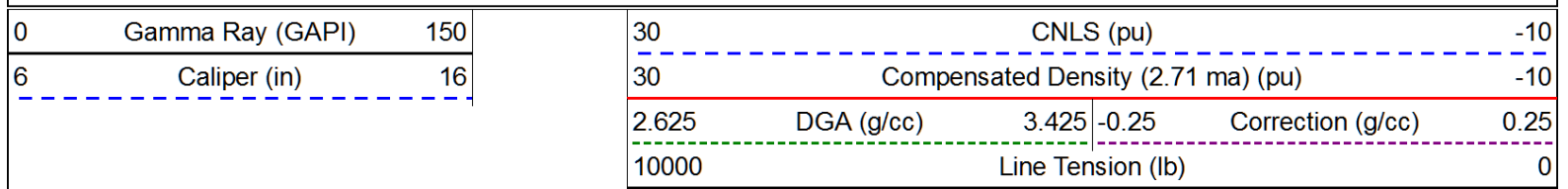








Database File: val_hd.db
 Dataset Pathname: dil/valmain
 Presentation Format: cndlspec
 Dataset Creation: Mon Jul 22 00:04:46 2013
 Charted by: Depth in Feet scaled 1:240



LSPD
(ft/min)

