



Pioneer Energy Services

Dual Induction Log

15-035-24541-00-00

API No.	Company Val Energy, Inc.		Location N2 SE SE 990' FSL / 660' FEL	Other Services CNL/CDL MEL/BHCS
	Well Watt #1-3	State Kansas		
	Field David			
	County Cowley			
	Sec: 3	Twp: 31S	Rge: 4E	
Permanent Datum	Ground Level	Elevation	1258	
Log Measured From	Kelly Bushing	10 Ft. Above Perm. Datum		
Drilling Measured From	Kelly Bushing			
Date	7/21/2013			
Run Number	One			
Depth Driller	3525			
Depth Logger	3519			
Bottom Logged Interval	3518			
Top Log Interval	200			
Casing Driller	8.625 @ 220			
Casing Logger	218			
Bit Size	7.875			
Type Fluid in Hole	Chemical			
Salinity, ppm Cl	2000			
Density / Viscosity	9.4	48		
pH / Fluid Loss	10.5	8.0		
Source of Sample	Flowline			
Rm @ Meas. Temp	0.65 @ 80			
Rmf @ Meas. Temp	0.49 @ 80			
Rmc @ Meas. Temp	0.88 @ 80			
Source of Rmf / Rmc	Charts			
Rm @ BHT	0.47 @ 111			
Operating Rig Time	4 Hours			
Max Rec. Temp. F	111			
Equipment Number	17			
Location	Hays			
Recorded By	R. Barnhart			
Witnessed By	Joe Baker			

<<< Fold Here >>>

All interpretations are opinions based on inferences from electrical or other measurements and we cannot and do not guarantee the accuracy or correctness of any interpretation, and we shall not, except in the case of gross or willful negligence on our part, be liable or responsible for any loss, costs, damages, or expenses incurred or sustained by anyone resulting from any interpretation made by any of our officers, agents or employees. These interpretations are also subject to our general terms and conditions set out in our current Price Schedule.

Comments

Thank you for using Log-Tech, Inc.
(785) 625-3858

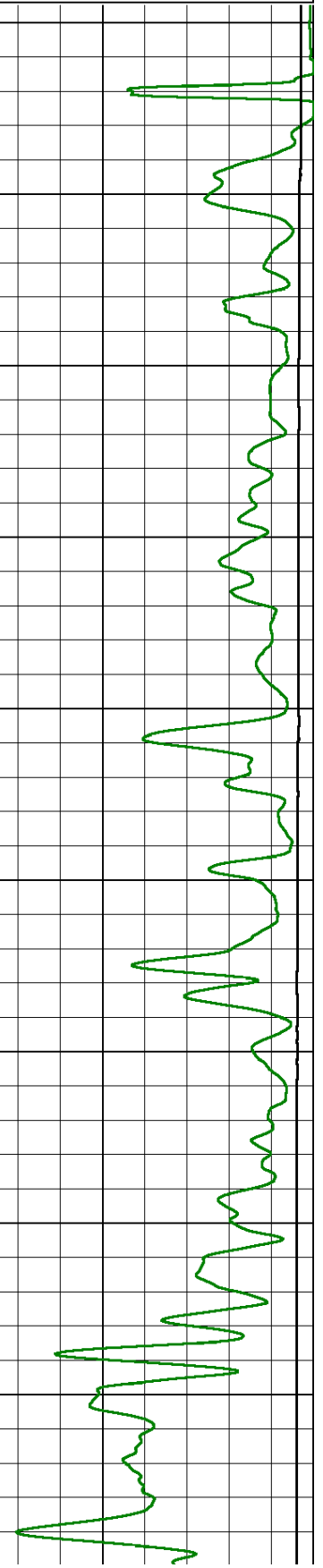
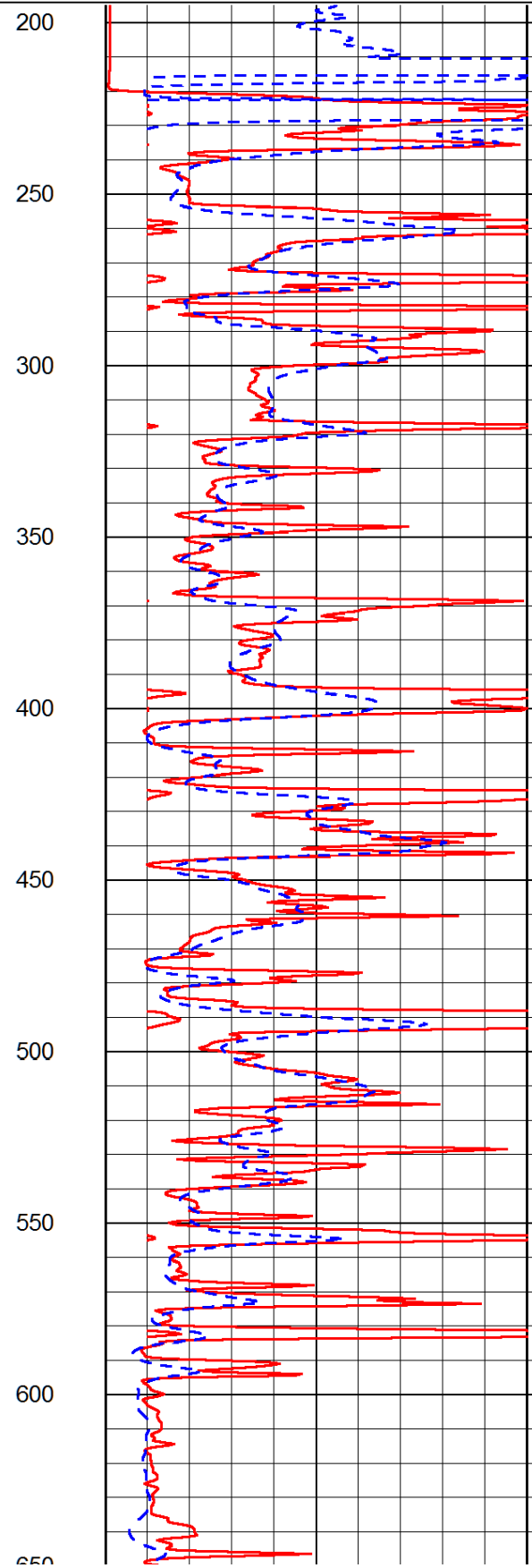
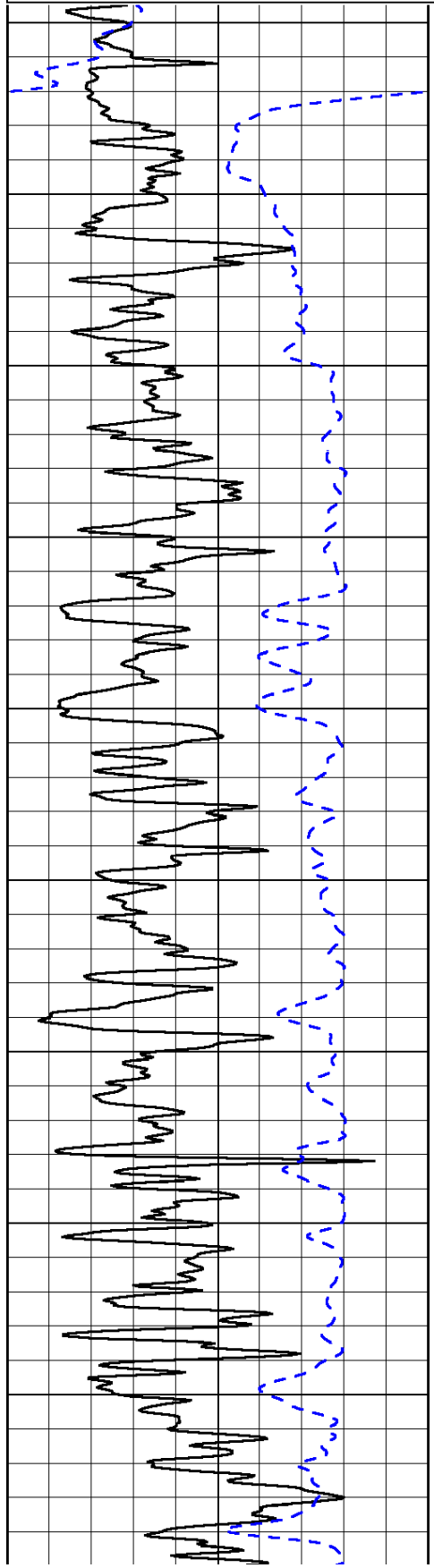
Augusta, KS:
S to Hwy. 77 & Hwy 15: 2E, 1/2S, W into

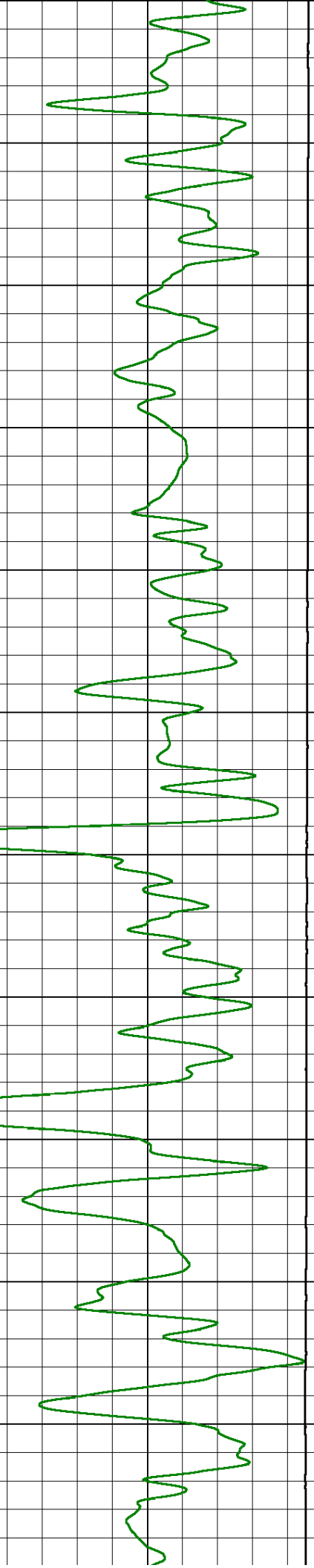
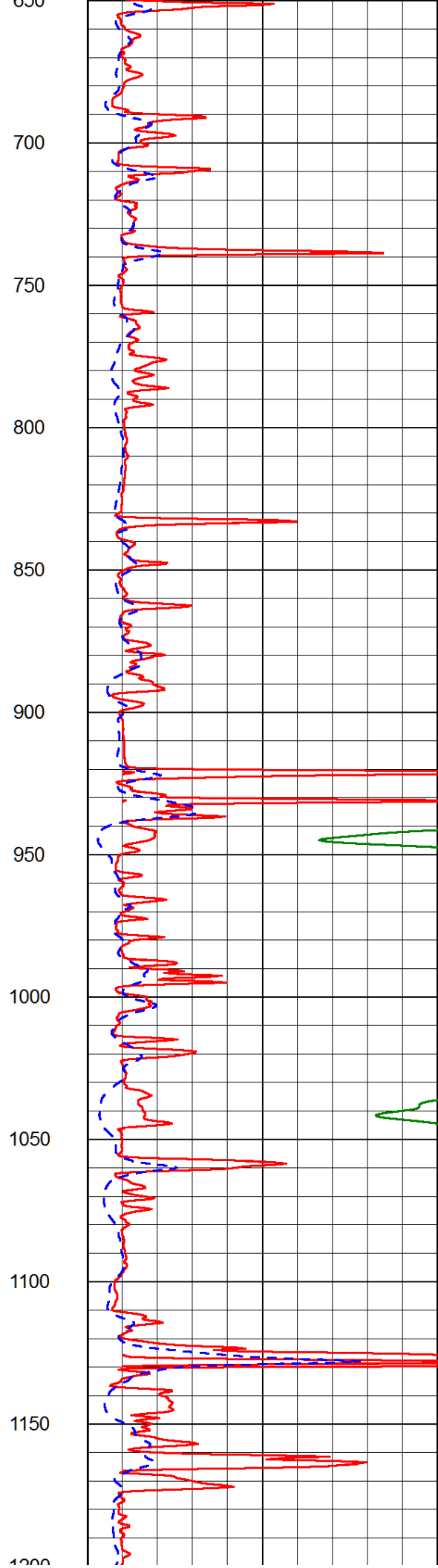
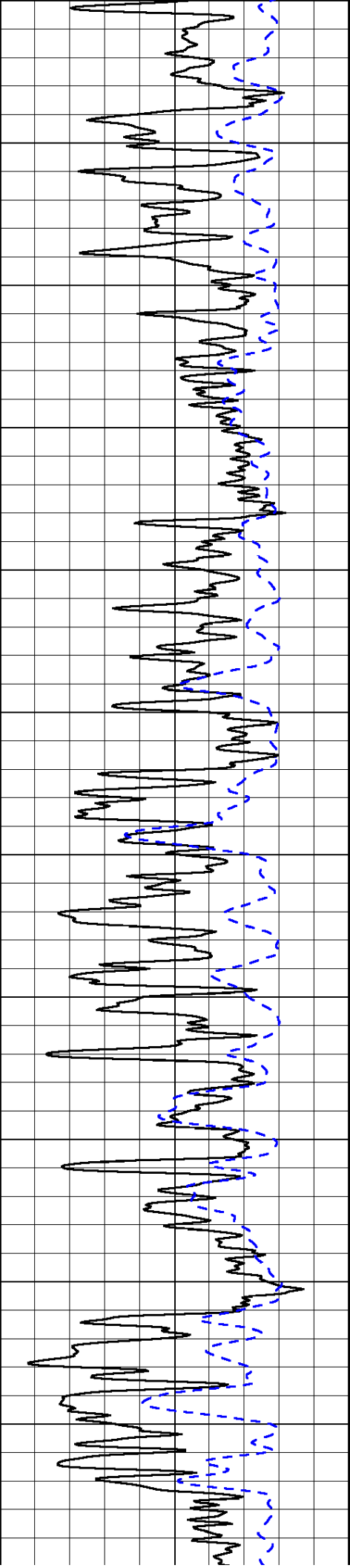
Database File: val_hd.db
 Dataset Pathname: dil/valmain
 Presentation Format: dil2in
 Dataset Creation: Mon Jul 22 00:04:46 2013
 Charted by: Depth in Feet scaled 1:600

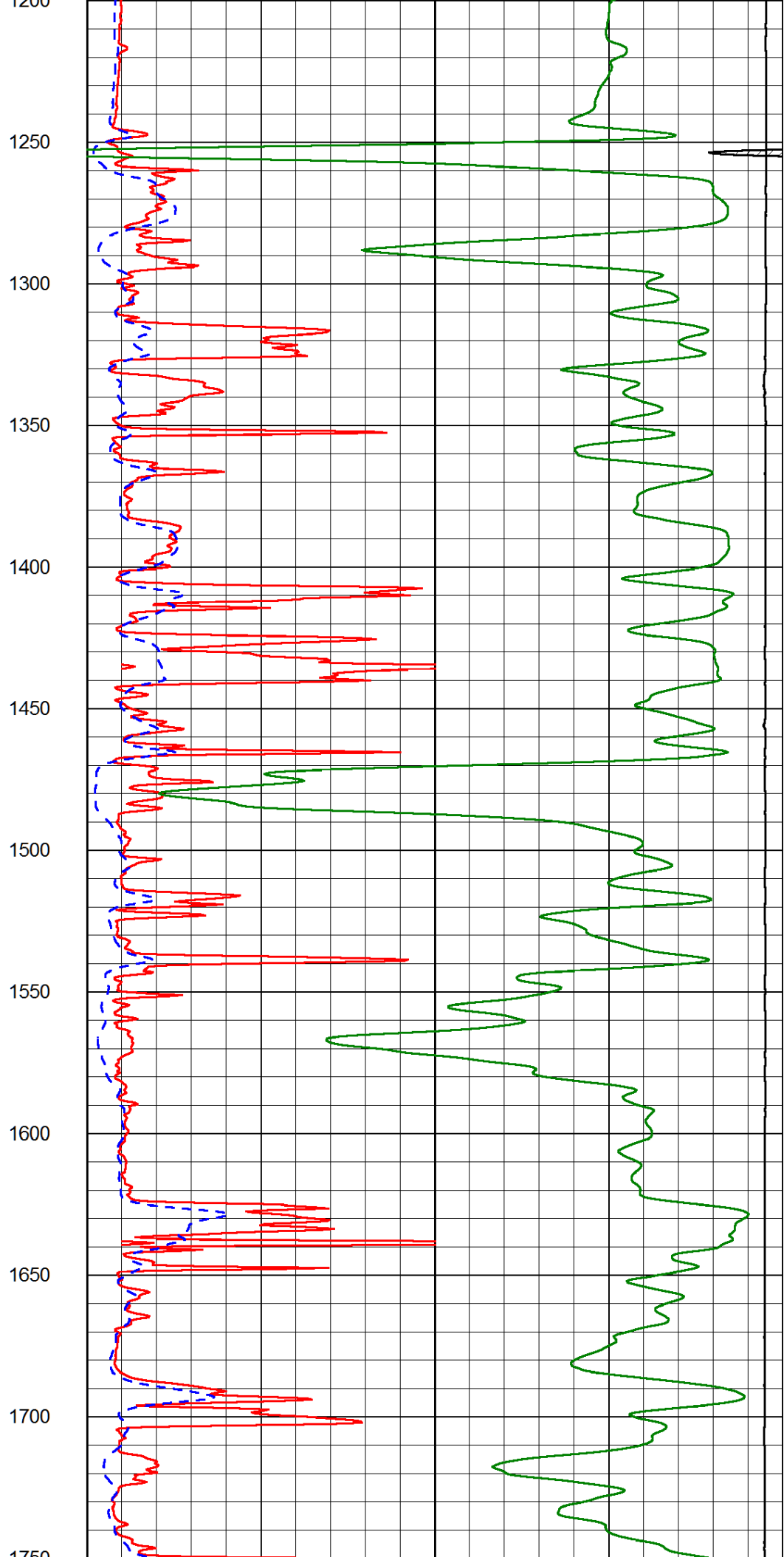
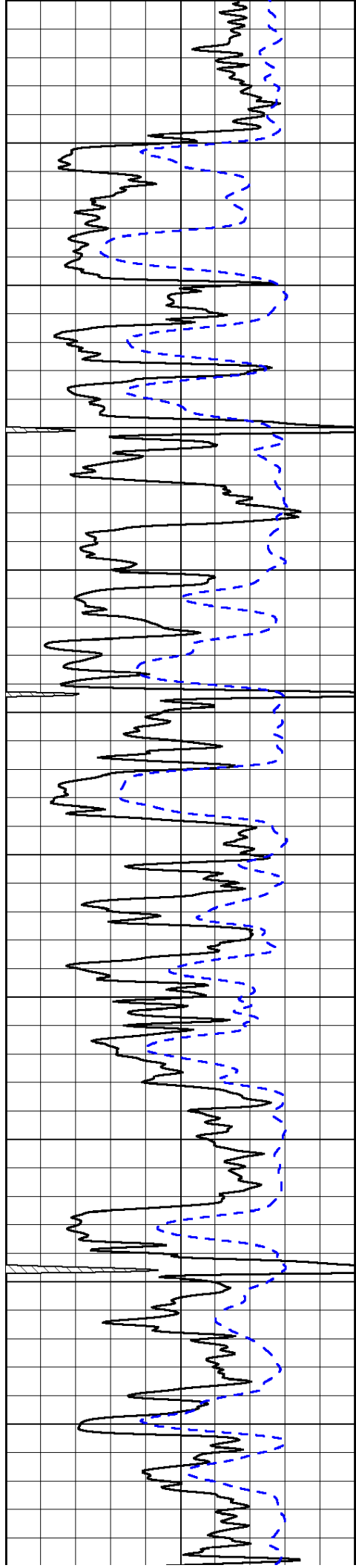
0	Gamma Ray (GAPI)	150
-200	SP (mV)	0

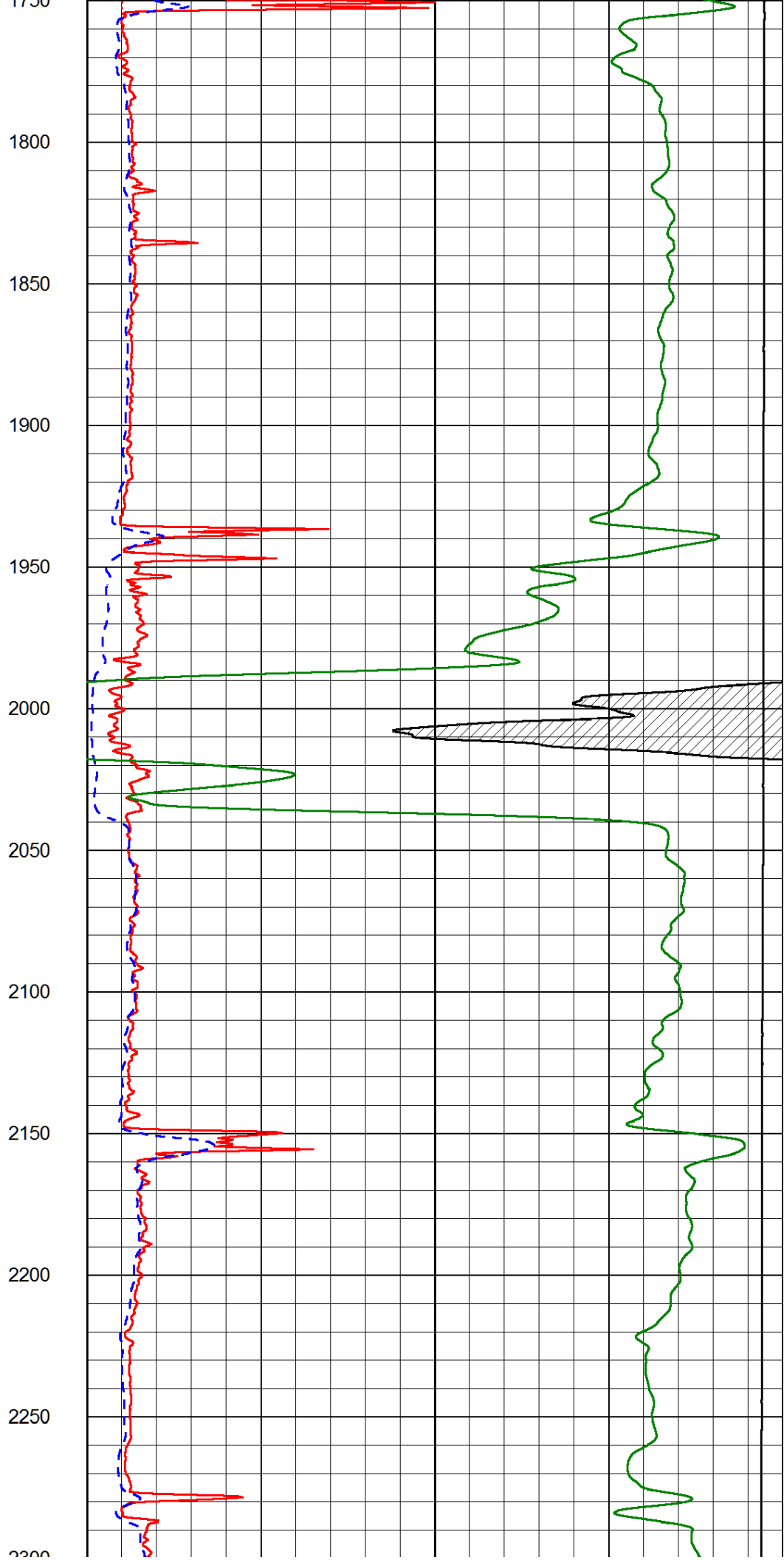
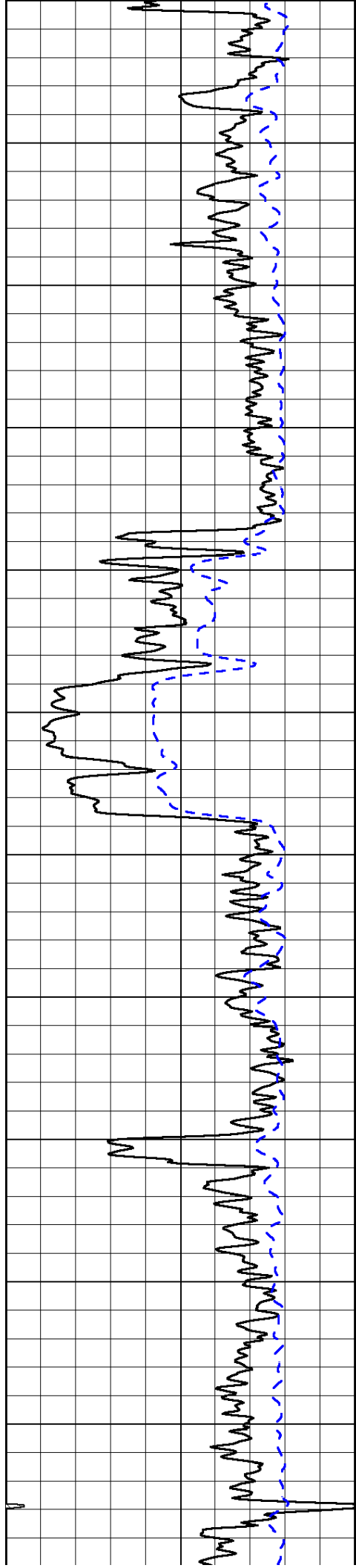
0	Shallow Resistivity (Ohm-m)	50
0	Deep Resistivity (Ohm-m)	50
1000	Conductivity (Ohm-m)	0
15000	Line Tension (lb)	0

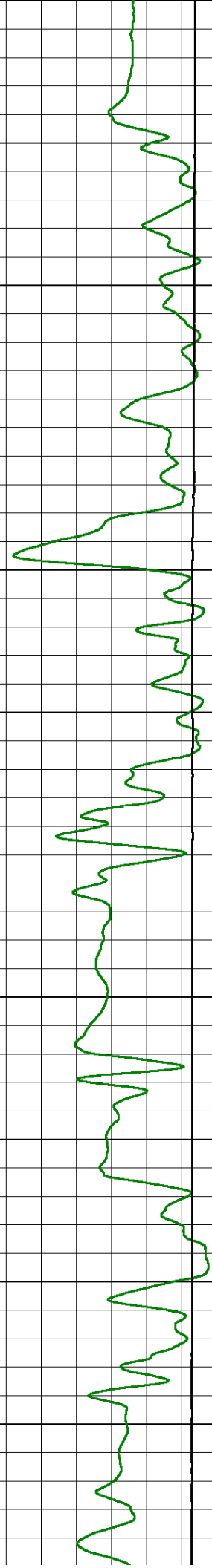
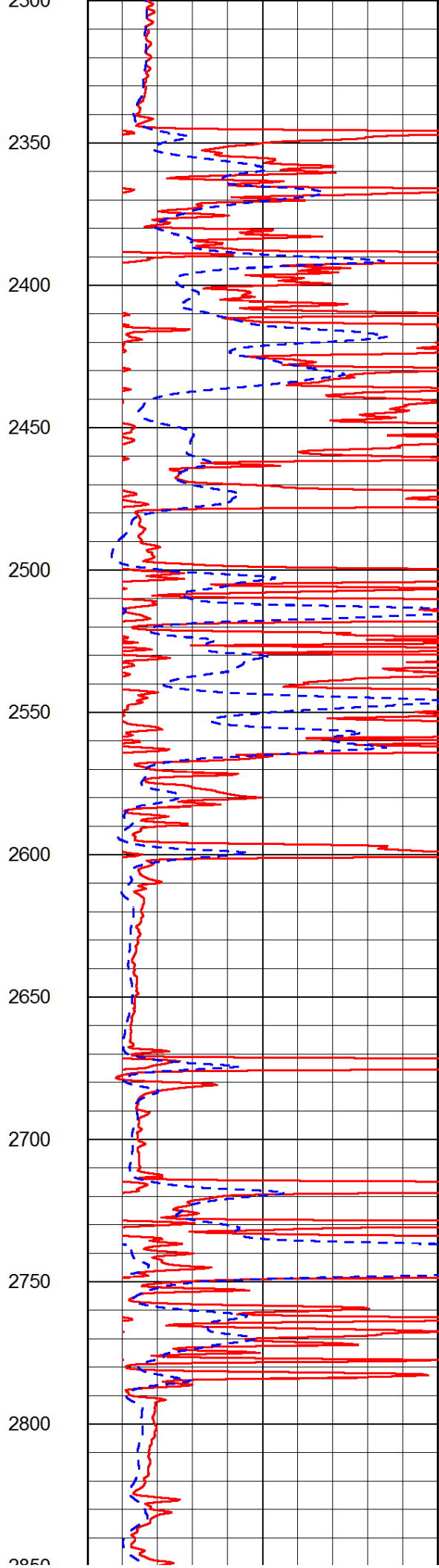
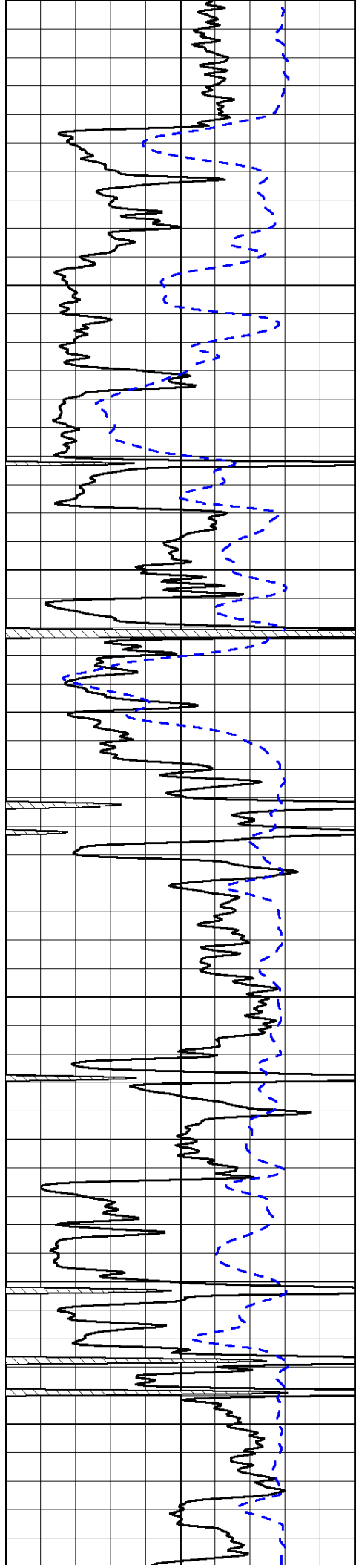
Shallow Resistivity		
50	(Ohm-m)	500
50	Deep Resistivity (Ohm-m)	500

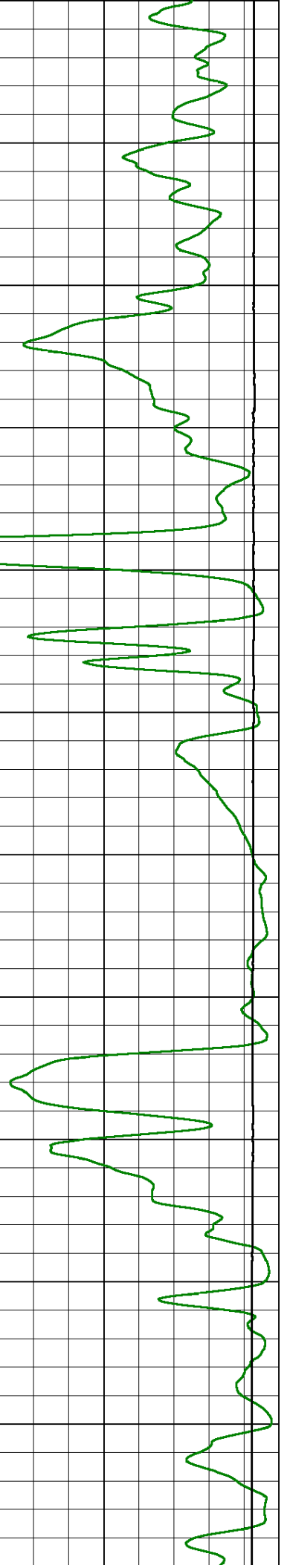
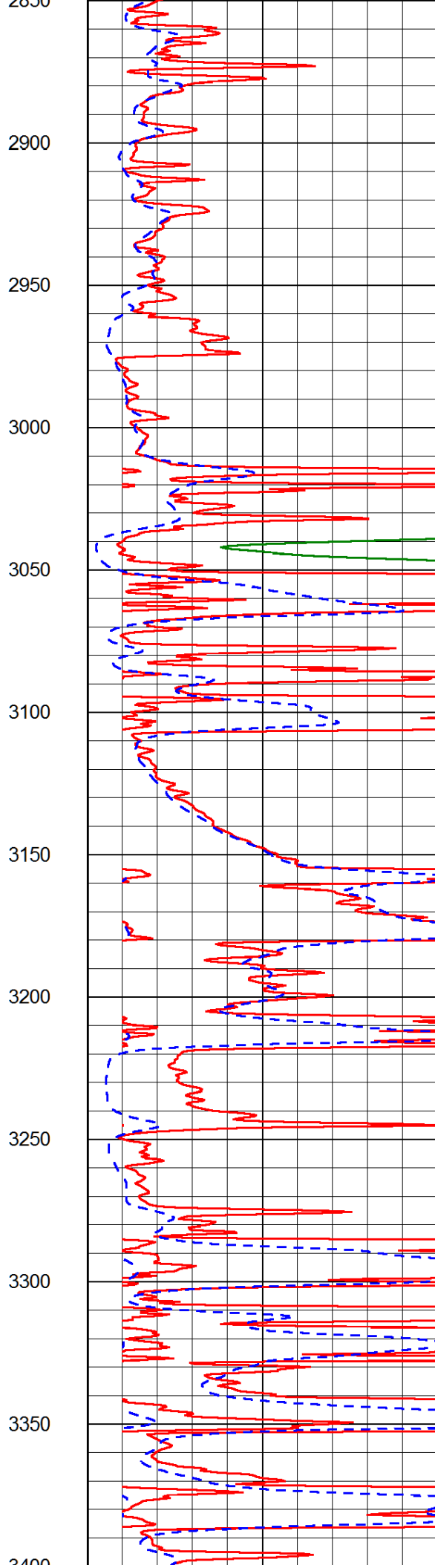
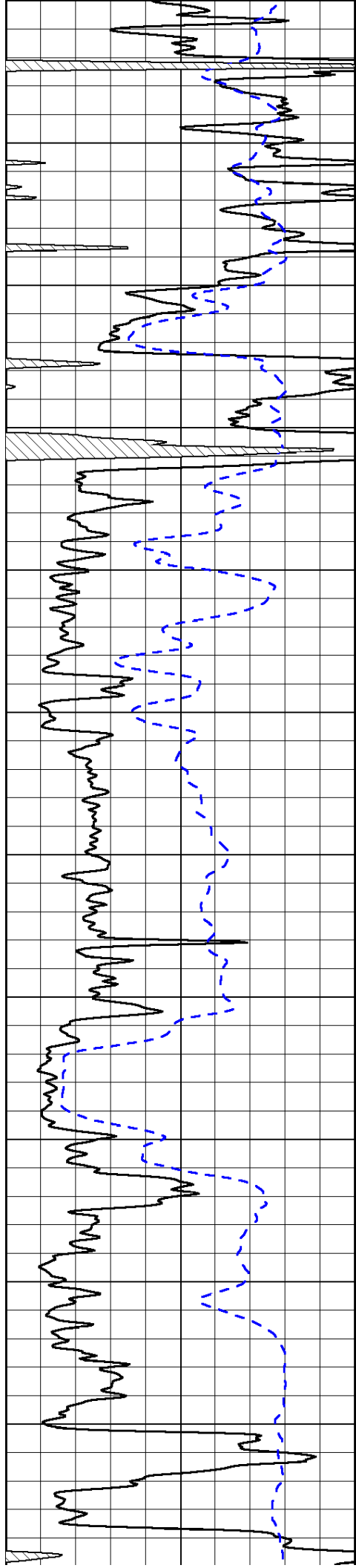


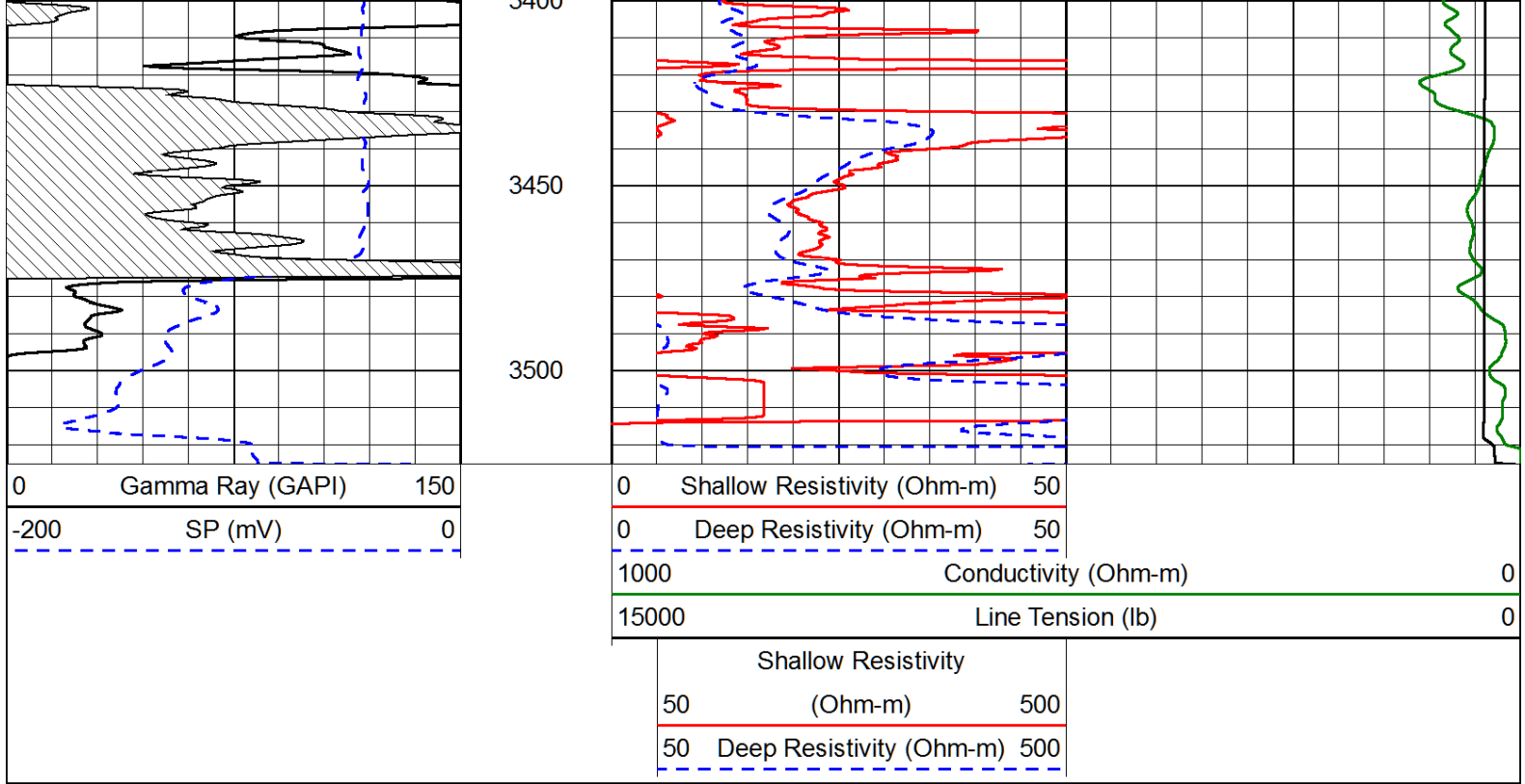




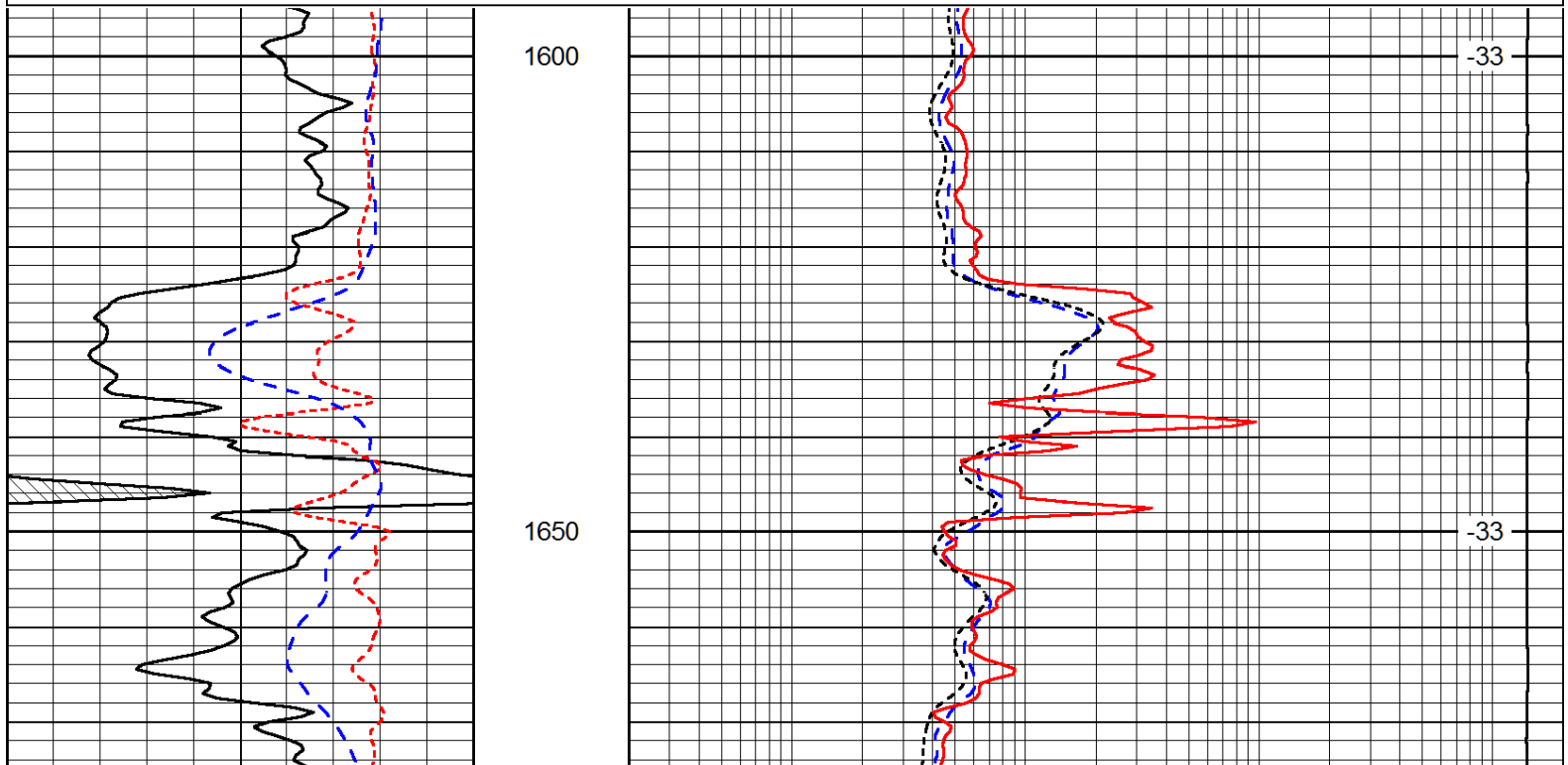
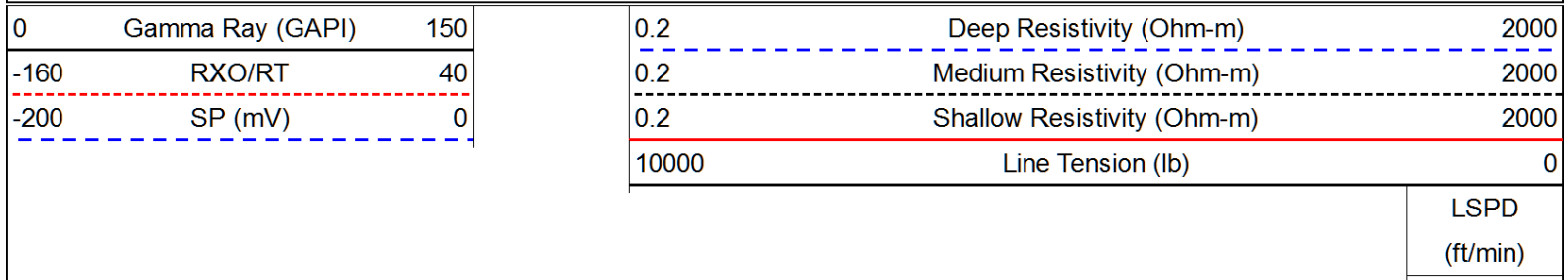


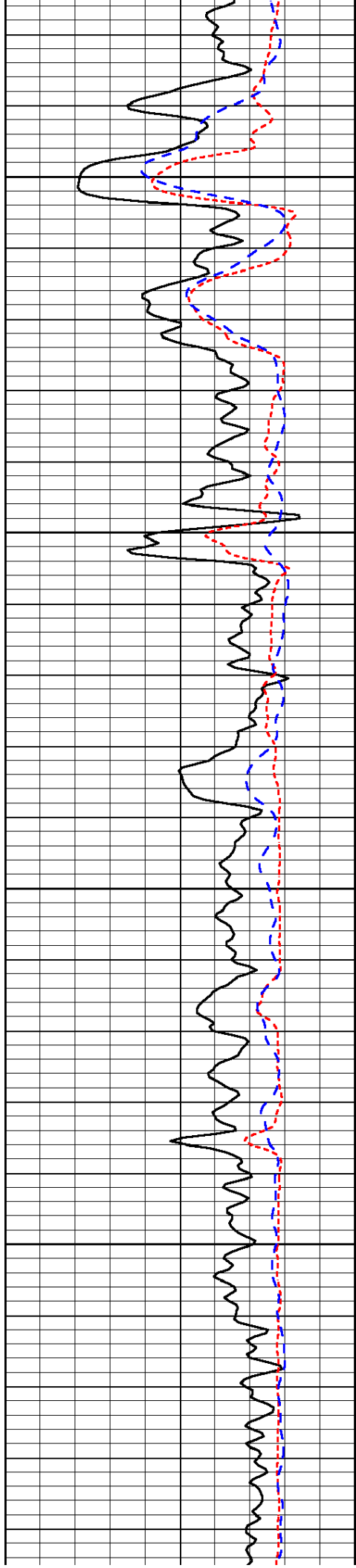






Database File: val_hd.db
 Dataset Pathname: dil/valmain
 Presentation Format: dil
 Dataset Creation: Mon Jul 22 00:04:46 2013
 Charted by: Depth in Feet scaled 1:240



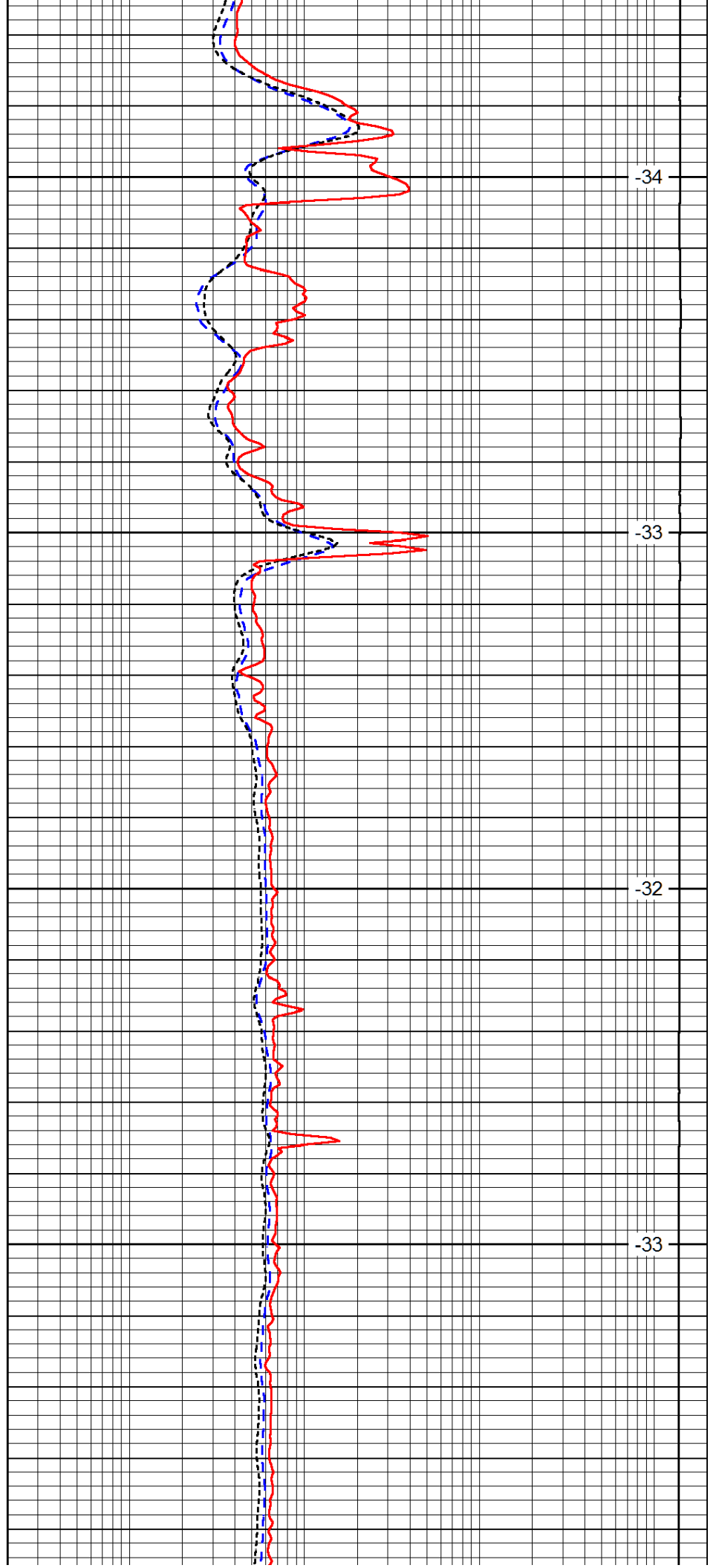


1700

1750

1800

1850

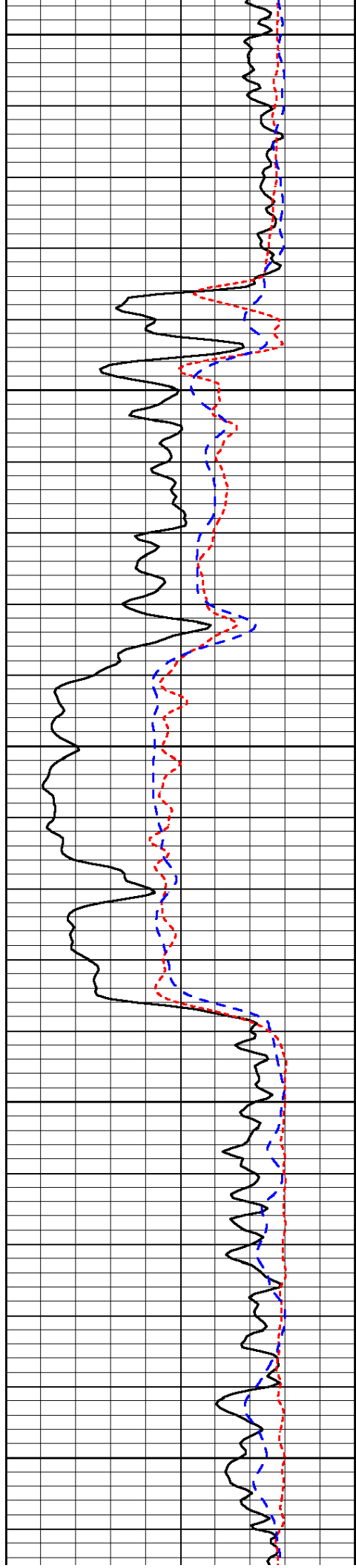


-34

-33

-32

-33



1900

1950

2000

2050

2100

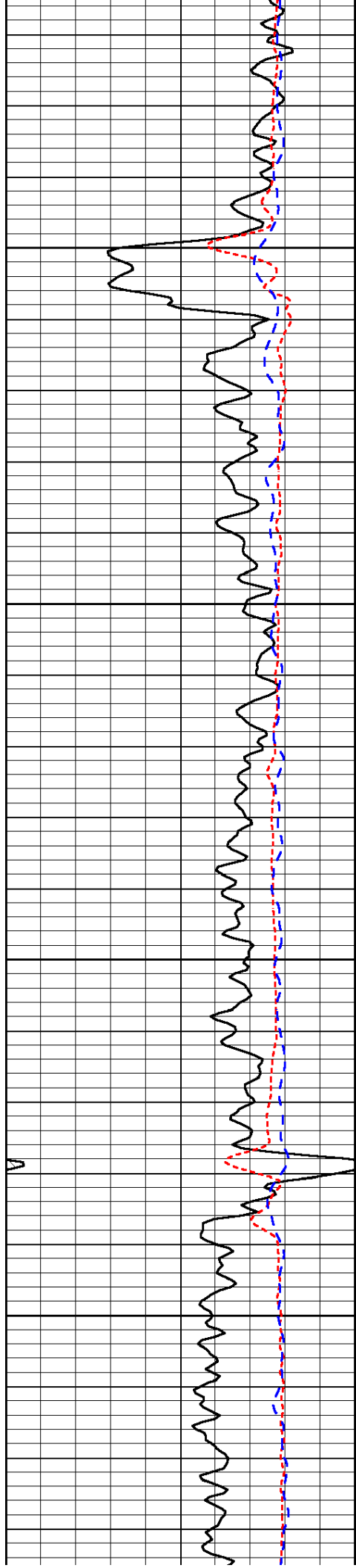
-33

-33

-33

-32

-32

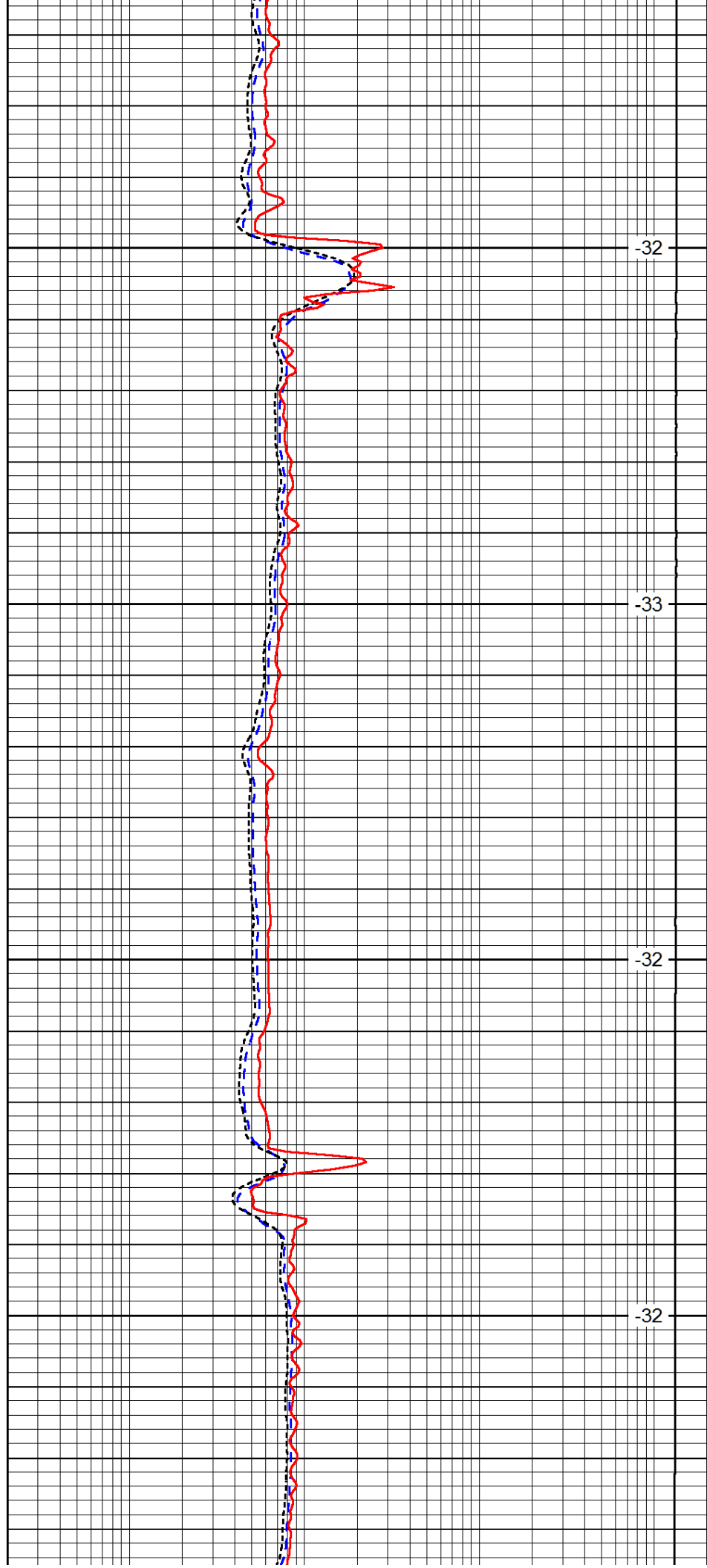


2150

2200

2250

2300

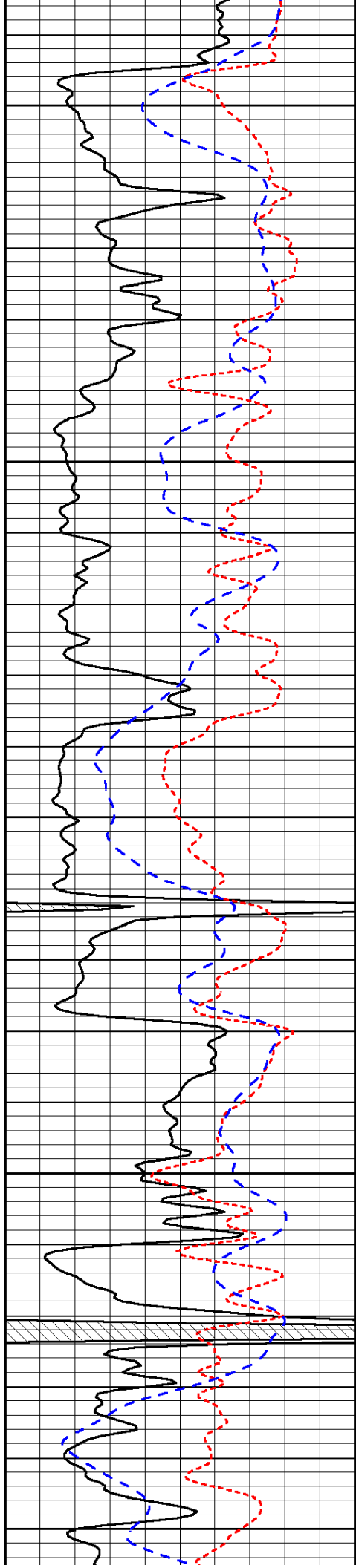


-32

-33

-32

-32



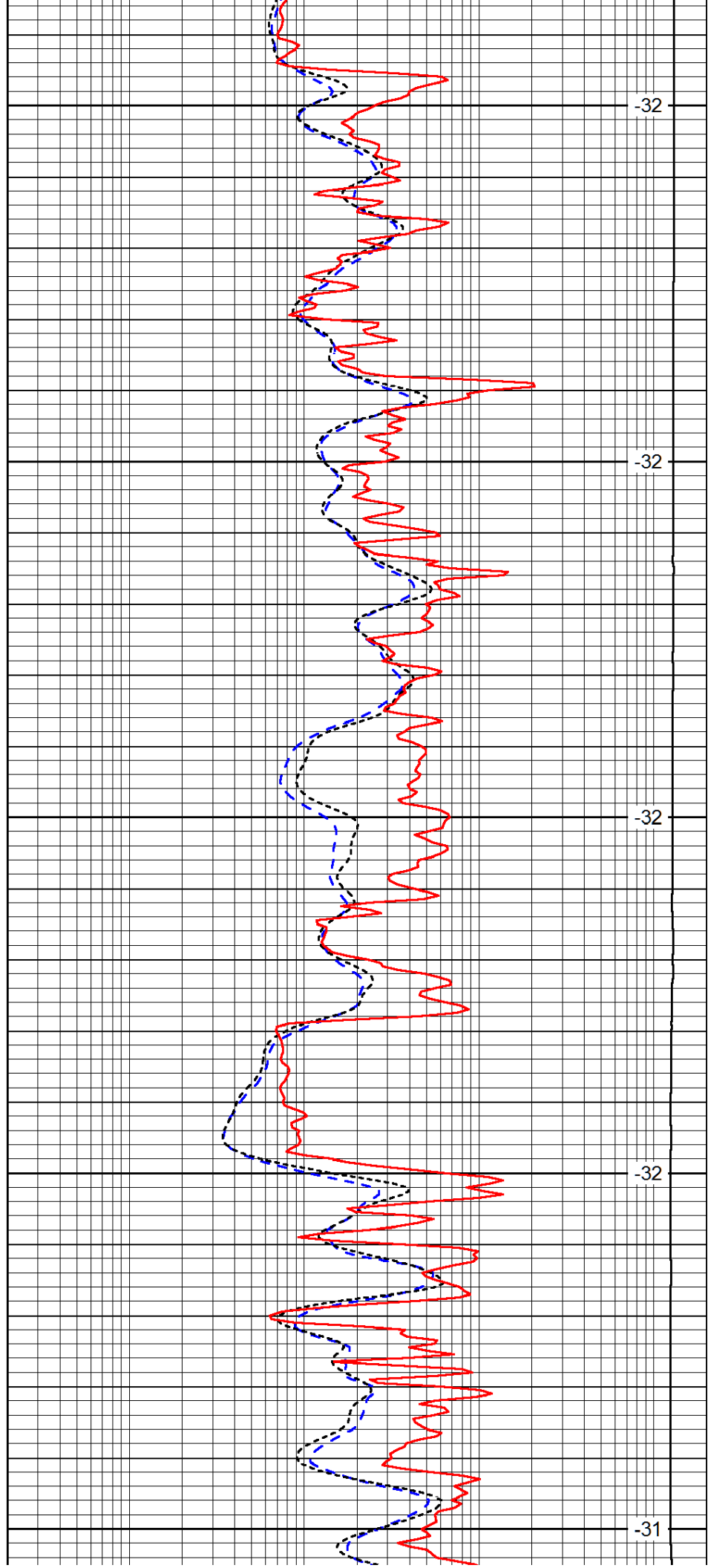
2350

2400

2450

2500

2550



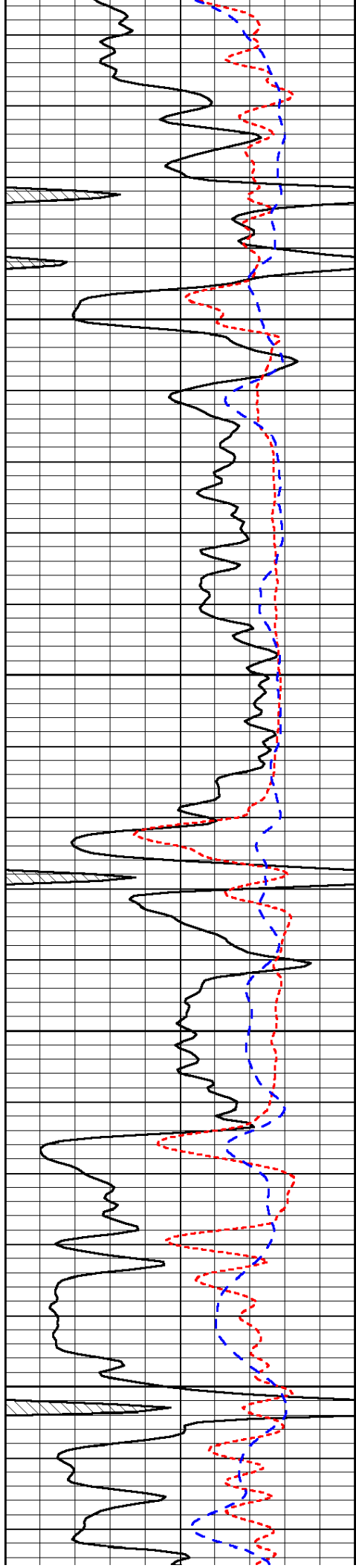
-32

-32

-32

-32

-31

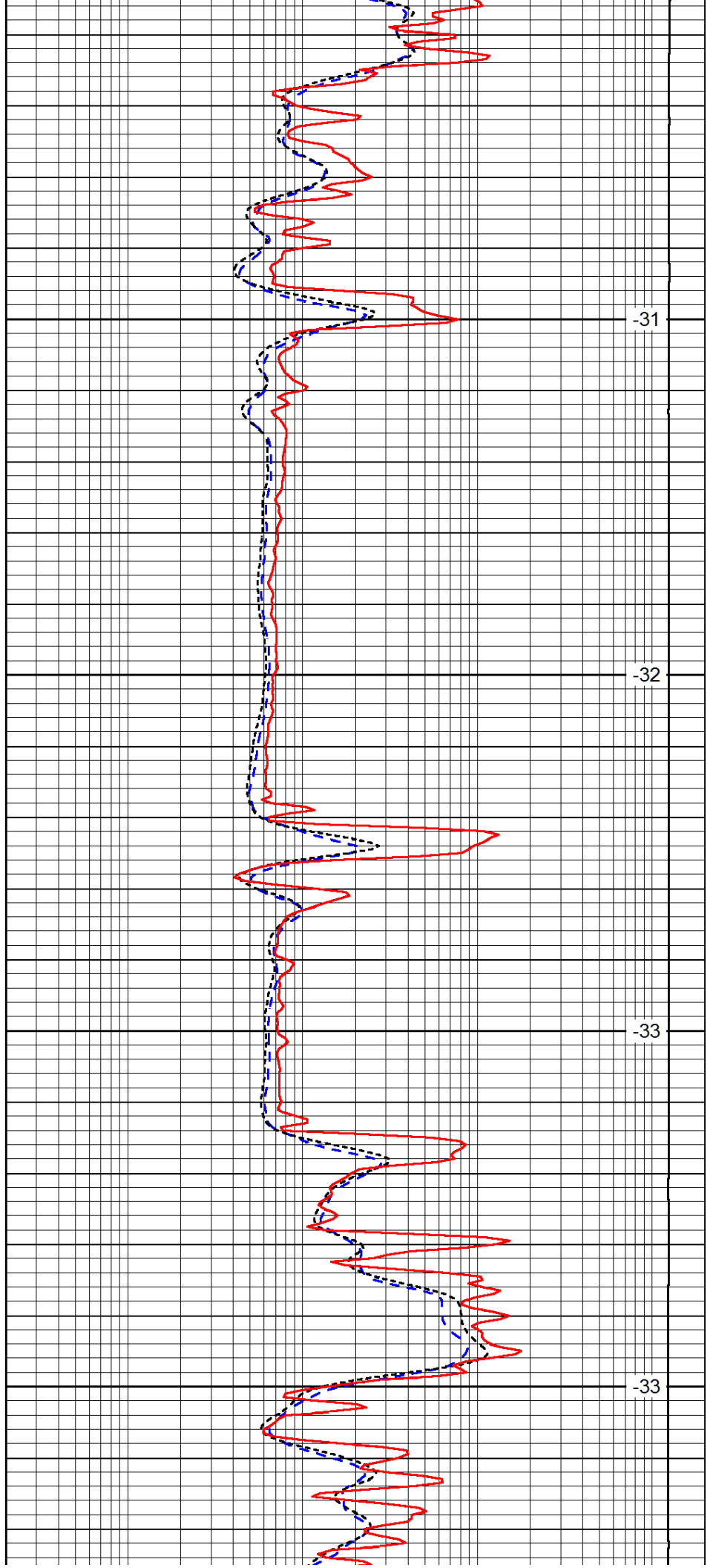


2600

2650

2700

2750

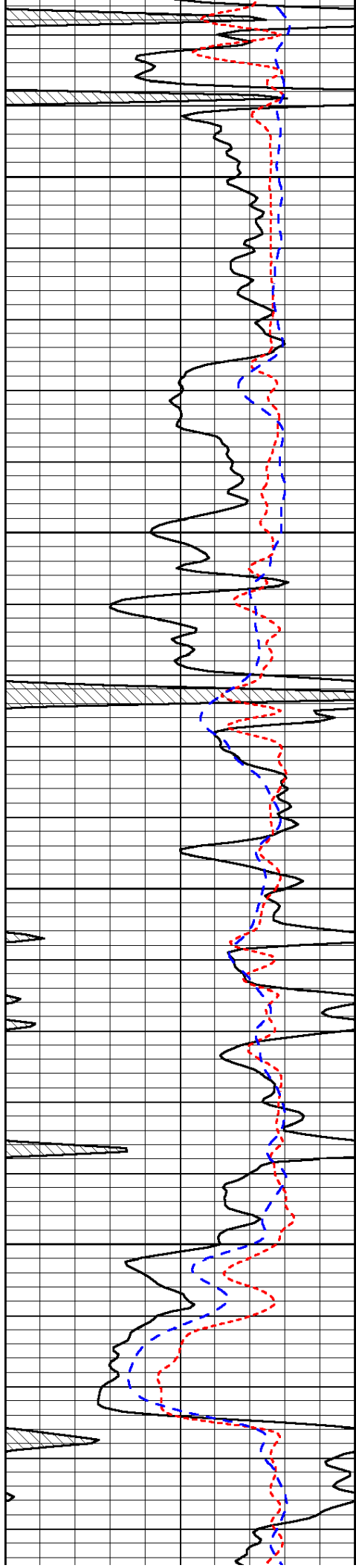


-31

-32

-33

-33

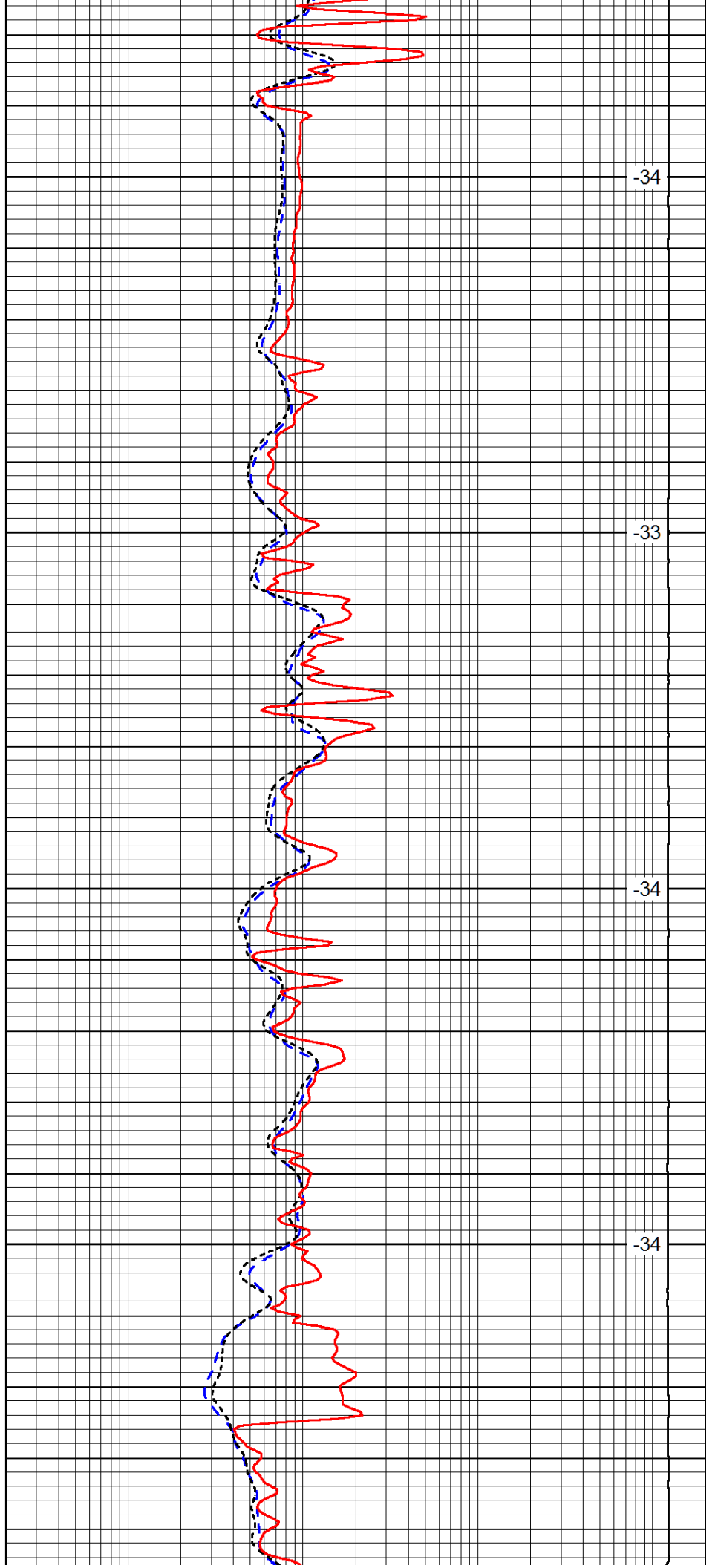


2800

2850

2900

2950

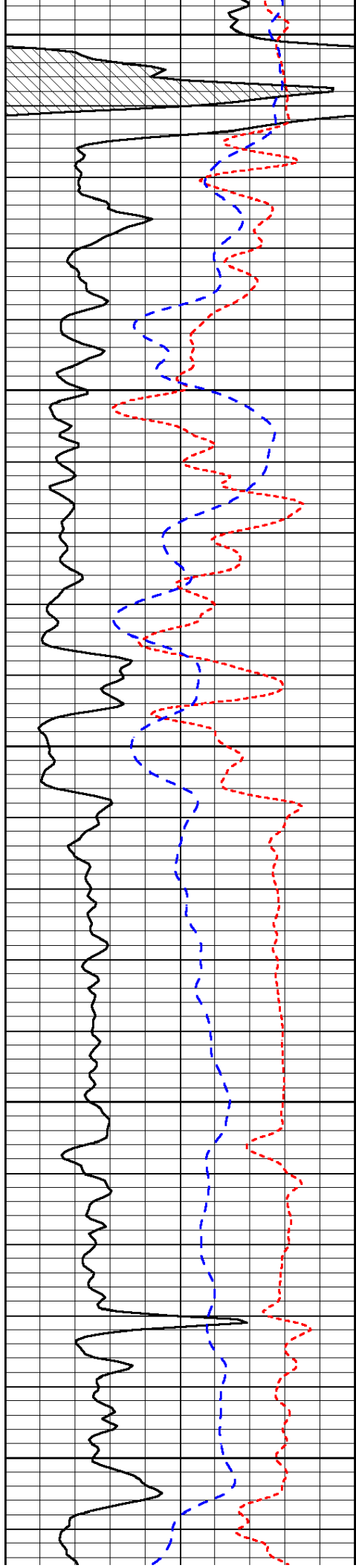


-34

-33

-34

-34



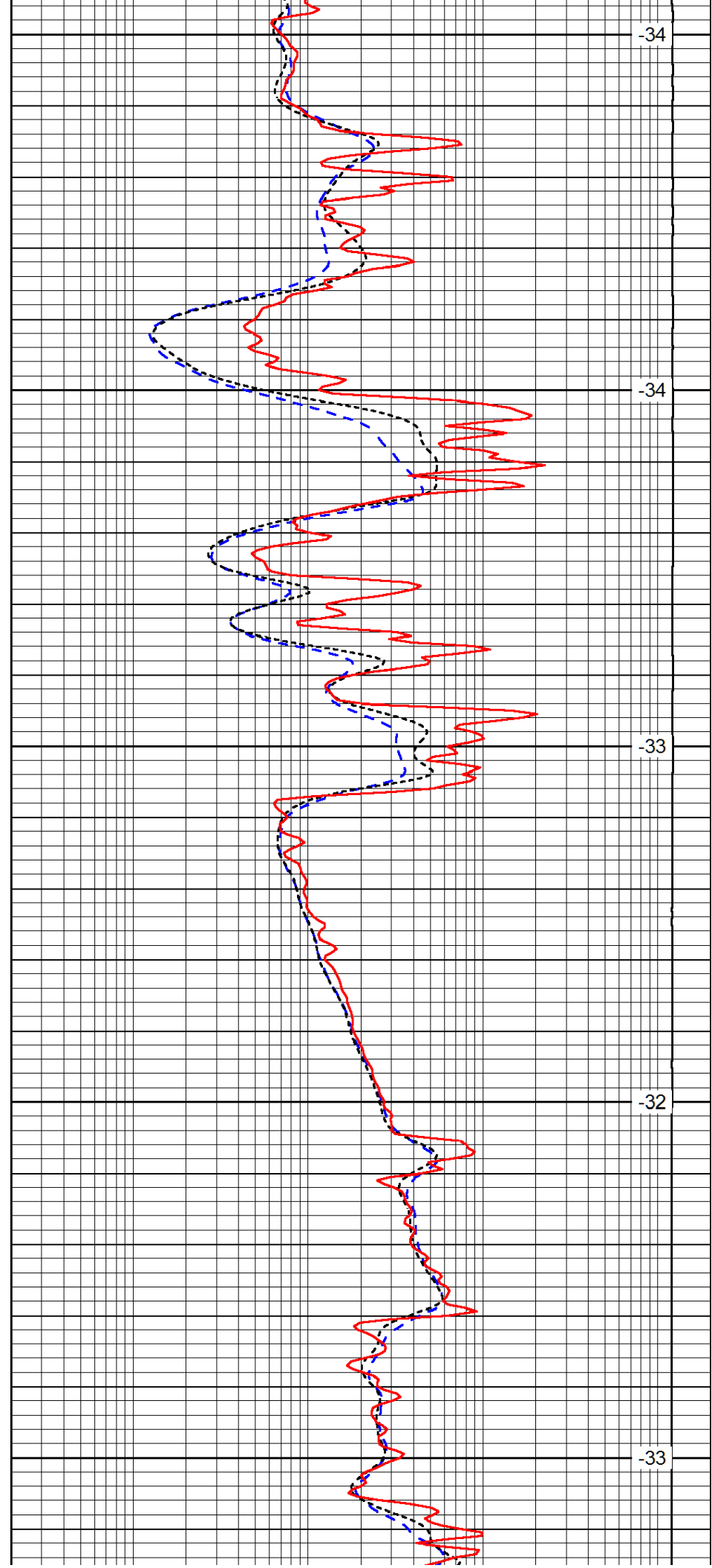
3000

3050

3100

3150

3200



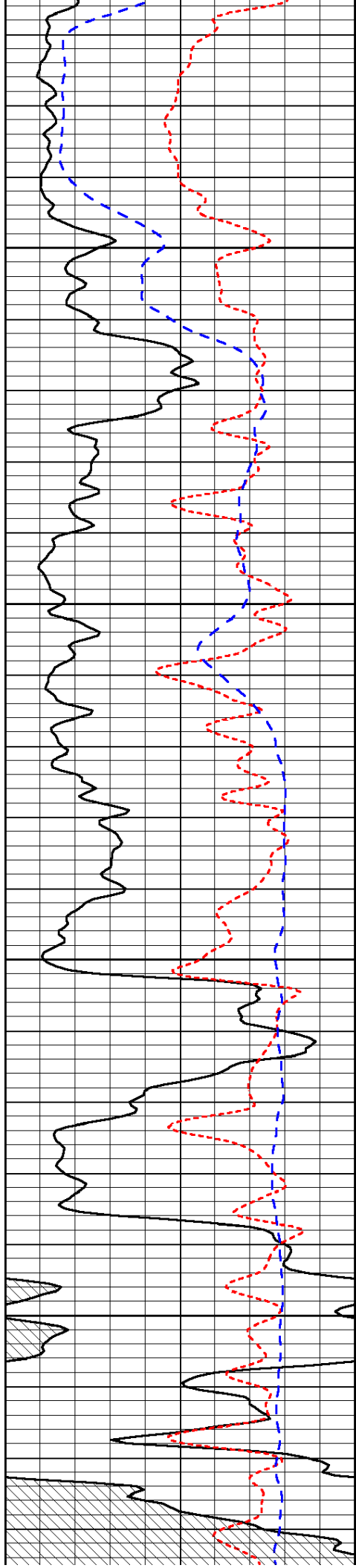
-34

-34

-33

-32

-33

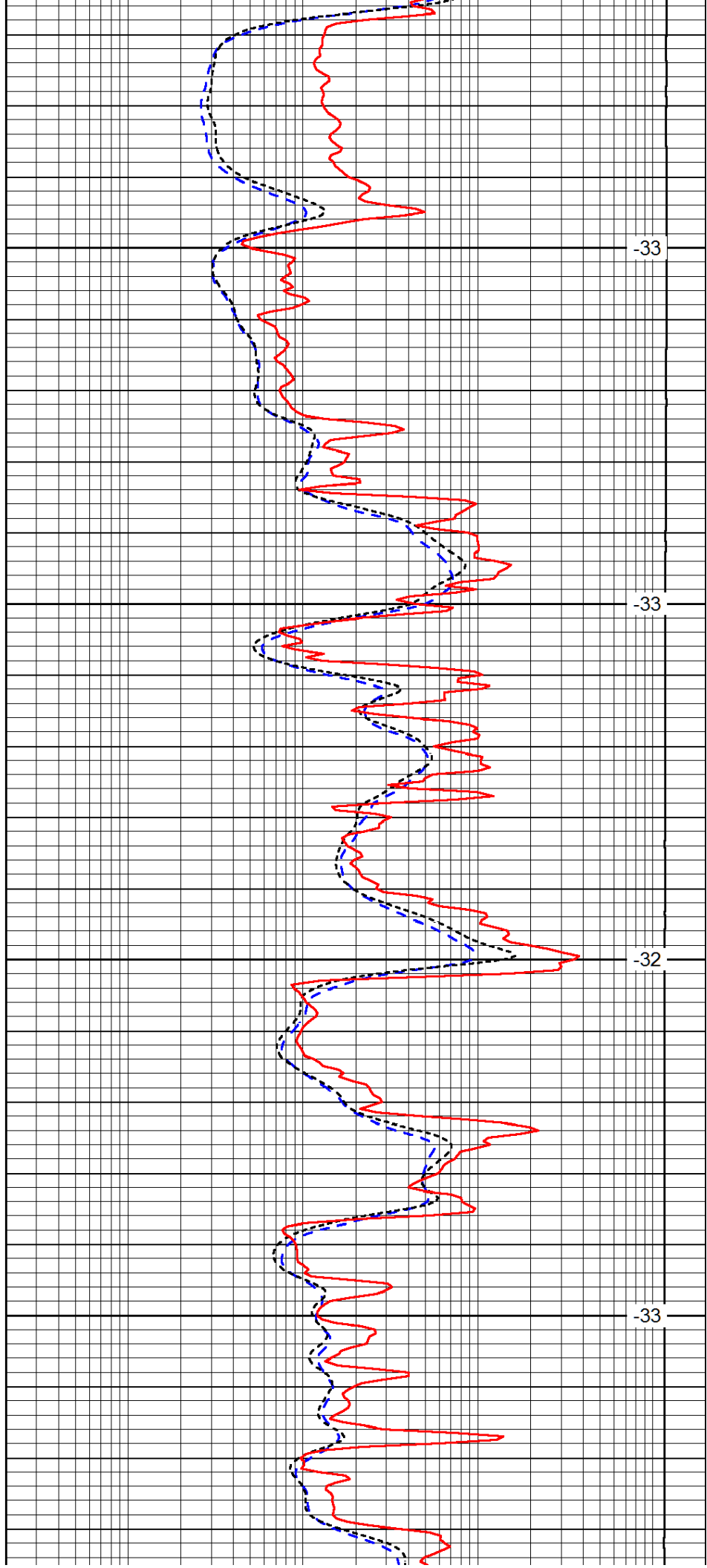


3250

3300

3350

3400

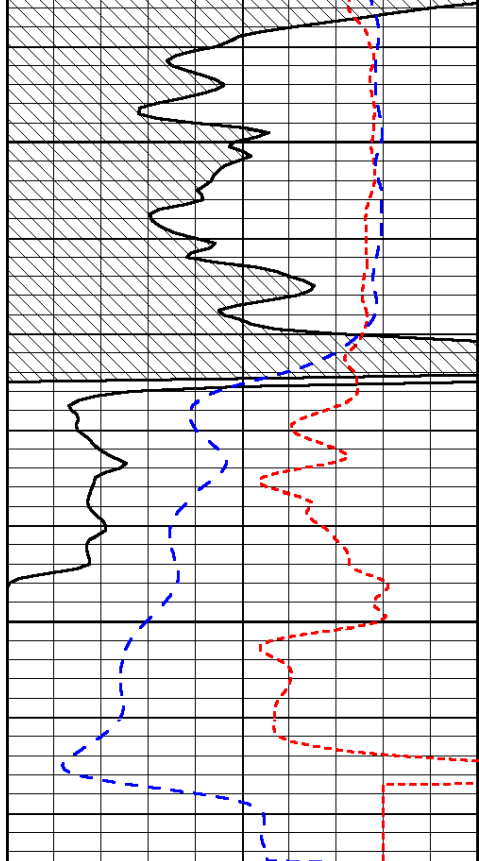


-33

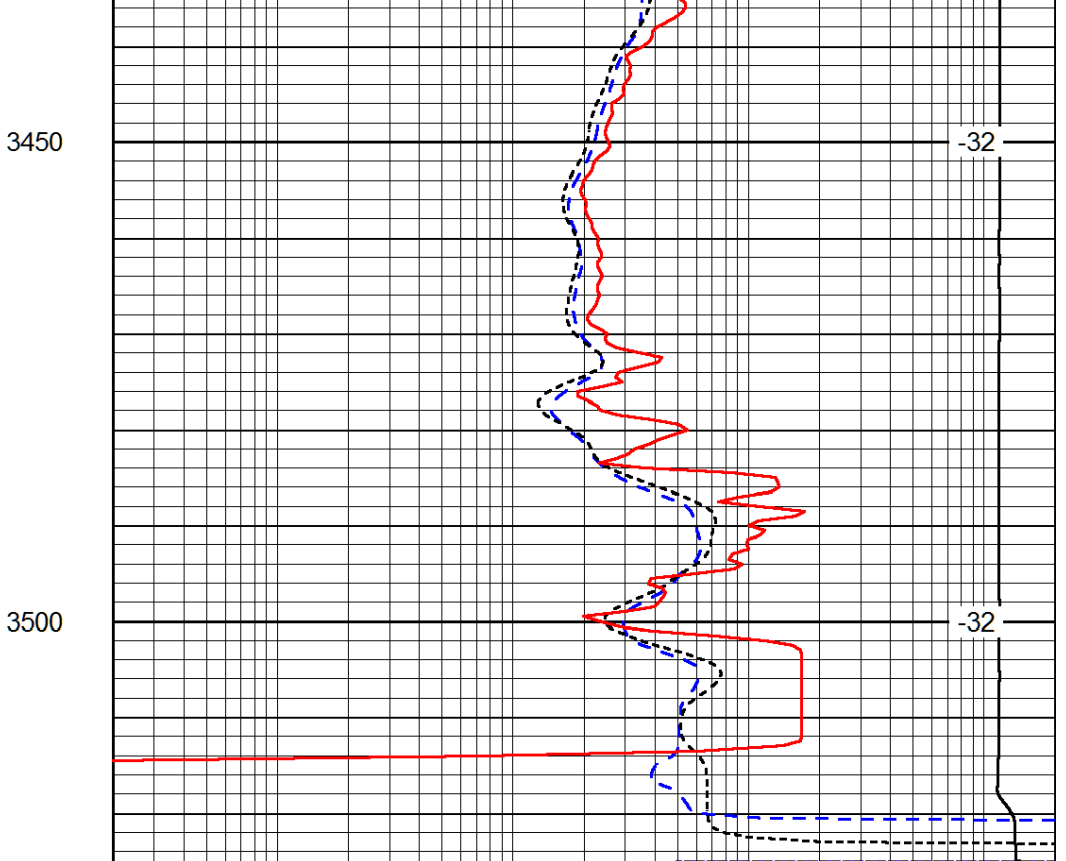
-33

-32

-33



0	Gamma Ray (GAPI)	150
-160	RXO/RT	40
-200	SP (mV)	0



0.2	Deep Resistivity (Ohm-m)	2000
0.2	Medium Resistivity (Ohm-m)	2000
0.2	Shallow Resistivity (Ohm-m)	2000
10000	Line Tension (lb)	0

LSPD (ft/min)
