



Pioneer Energy Services

Dual Compensated Porosity Log

API No.	15-065-23,957-00-00		
Company	H&C Oil Operating, Inc.		
Well	North Fork Farms No.25-2		
Field	Graham		
County	Graham		
State	Kansas		
Location	800' FNL & 1150' FEL		
Sec: 25	Twp: 9S	Rge: 25W	Elevation DILMEL

Permanent Datum	Ground Level	Elevation 2582	K.B. 2587
Log Measured From	Kelly Bushing	5 Ft. Above Perm. Datum	D.F. 2582
Drilling Measured From	Kelly Bushing		G.L. 2582
Date	8/12/2013		
Run Number	One		
Type Log	CNL / CDL		
Depth Driller	4190		
Depth Logger	4193		
Bottom Logged Interval	4172		
Top Logged Interval	3550		
Type Fluid In Hole	Chemical		
Salinity, PPM CL	1,600		
Density	9.2		
Level	Full		
Max. Rec. Temp. F	118		
Operating Rig Time	3 1/2 Hours		
Equipment -- Location	17 Days		
Recorded By	C. Desaire		
Witnessed By	Marc Downing		

Borehole Record				Casing Record			
Run No.	Bit	From	To	Size	Wgt.	From	To
One	12.25	00	263	8.625	23#	00	263
Two	7.875	263	TD				

<<< Fold Here >>>

All interpretations are opinions based on inferences from electrical or other measurements and we cannot and do not guarantee the accuracy or correctness of any interpretation, and we shall not, except in the case of gross or willful negligence on our part, be liable or responsible for any loss, costs, damages, or expenses incurred or sustained by anyone resulting from any interpretation made by any of our officers, agents or employees. These interpretations are also subject to our general terms and conditions set out in our current Price Schedule.

Comments

Thank you for using Log-Tech, Inc.
(785) 625-3858

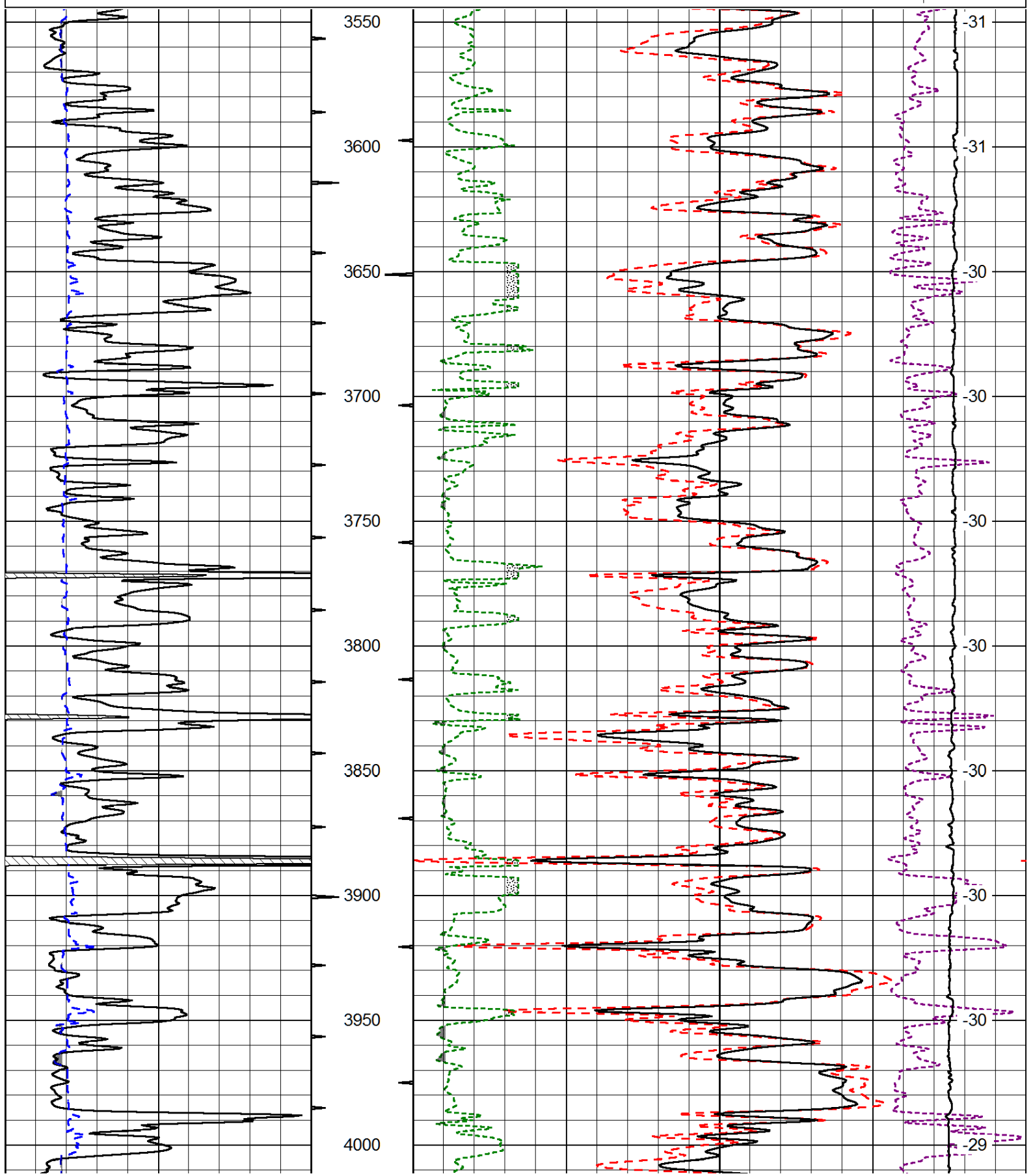
Wakeeney KS, N to Red Line Rd,
W to 160 Rd, 3/4 N, 1/4 W(2nd Tank Battery),
N Into

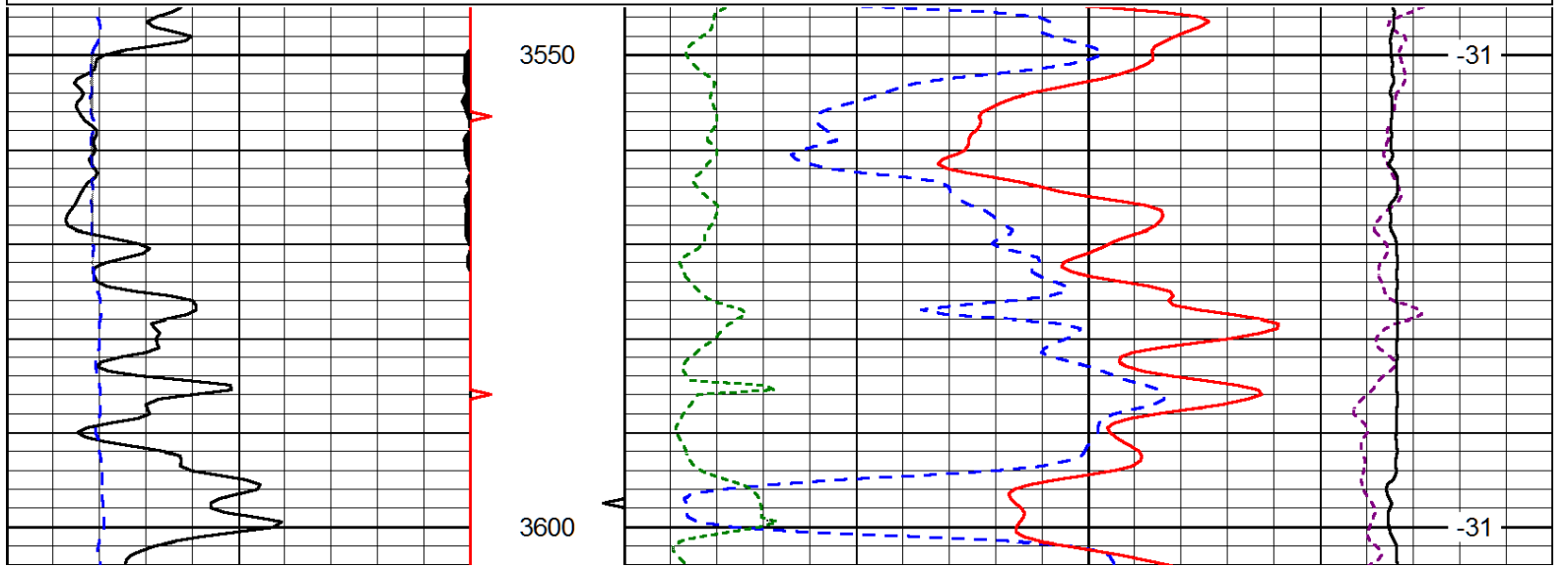
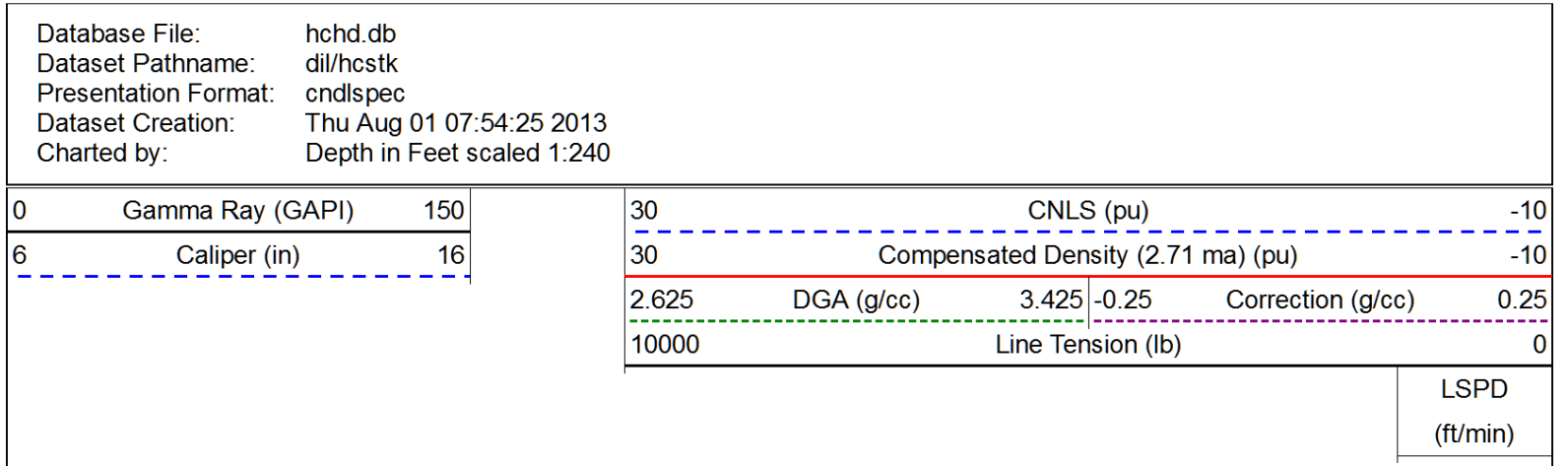
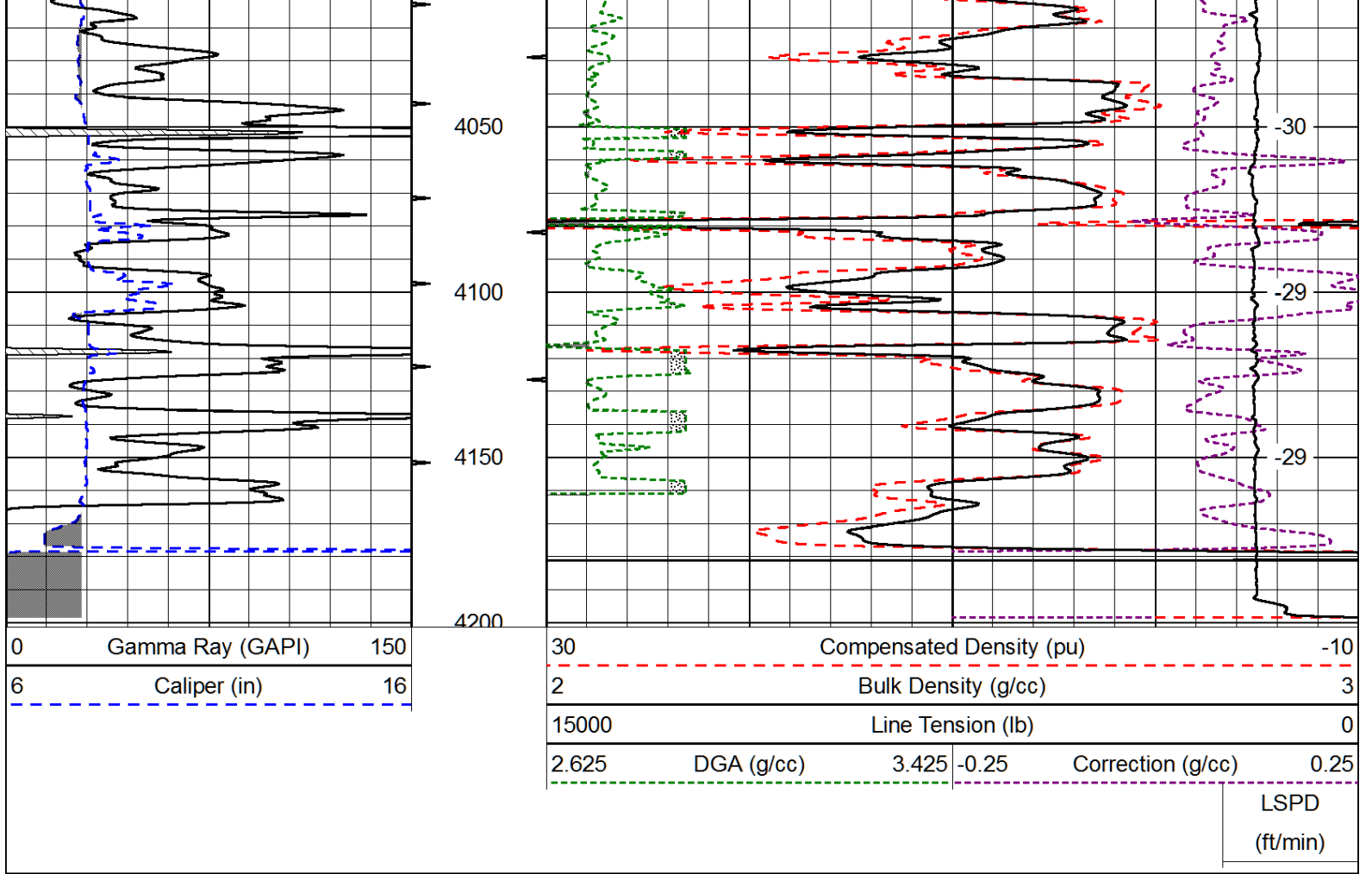
Database File: hchd.db
 Dataset Pathname: dil/hcstk
 Presentation Format: cdl
 Dataset Creation: Thu Aug 01 07:54:25 2013
 Charted by: Depth in Feet scaled 1:600

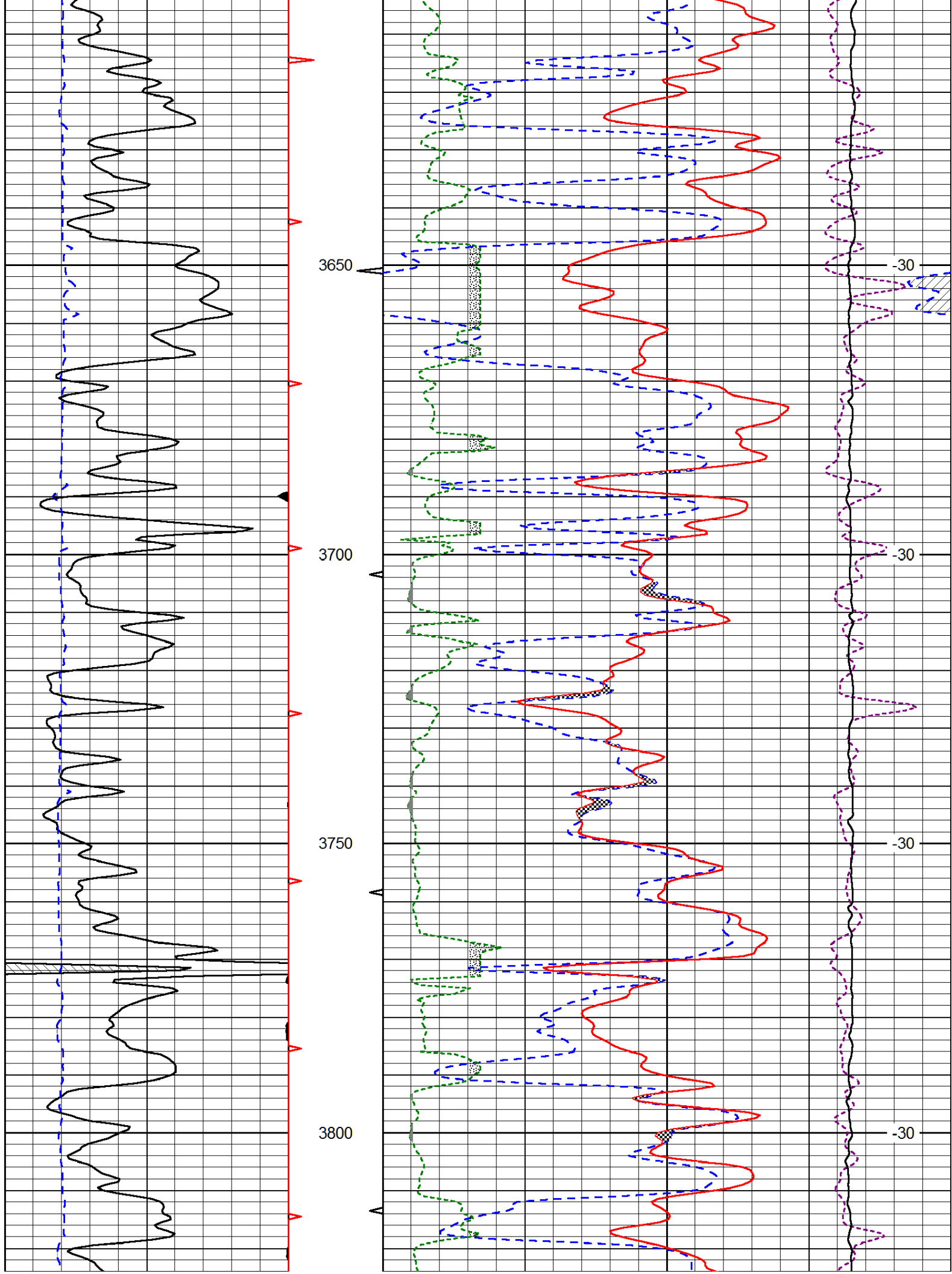
0	Gamma Ray (GAPI)	150
6	Caliper (in)	16

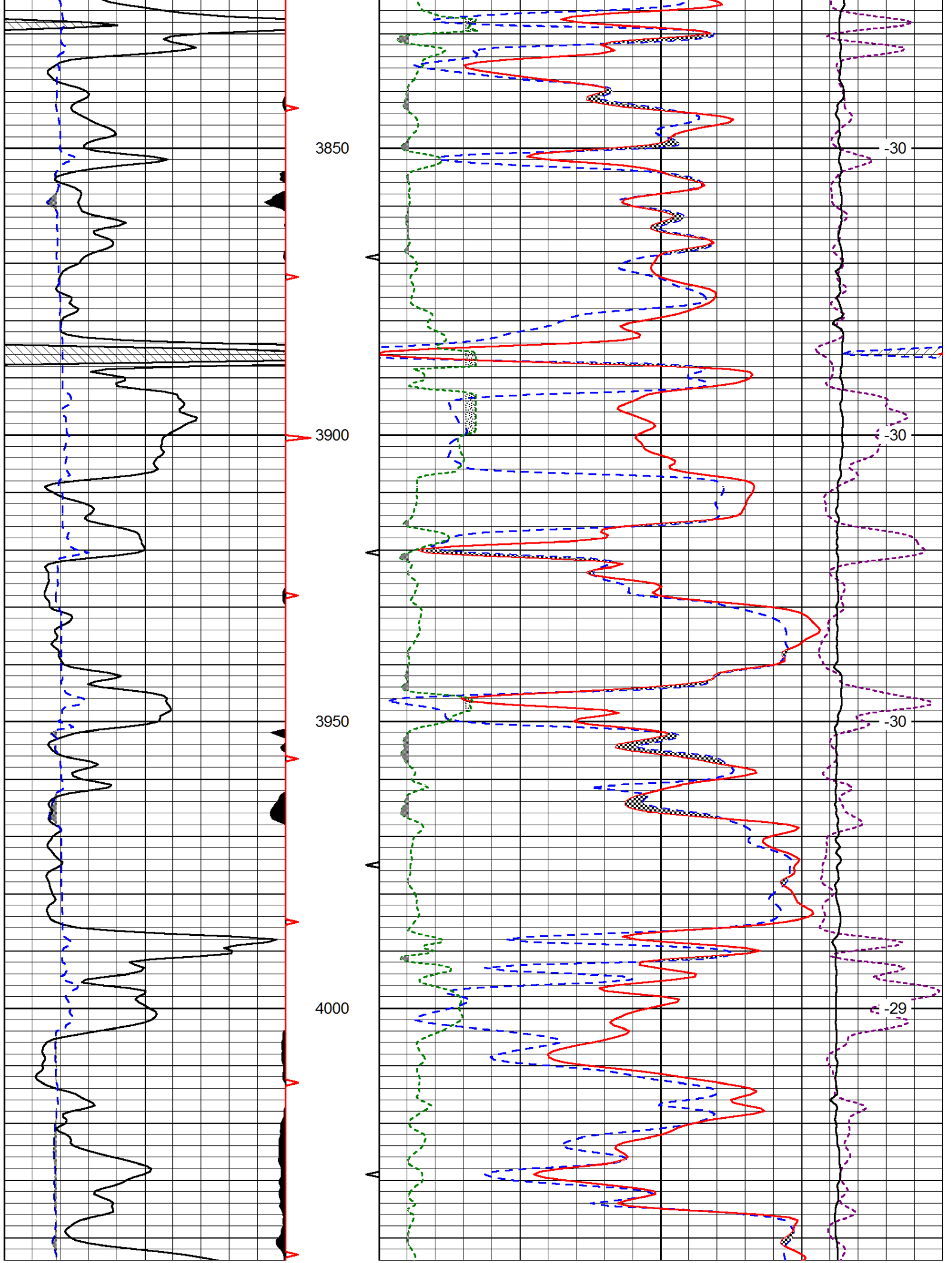
30	Compensated Density (pu)		-10
2	Bulk Density (g/cc)		3
15000	Line Tension (lb)		0
2.625	DGA (g/cc)	3.425	-0.25
		Correction (g/cc)	0.25

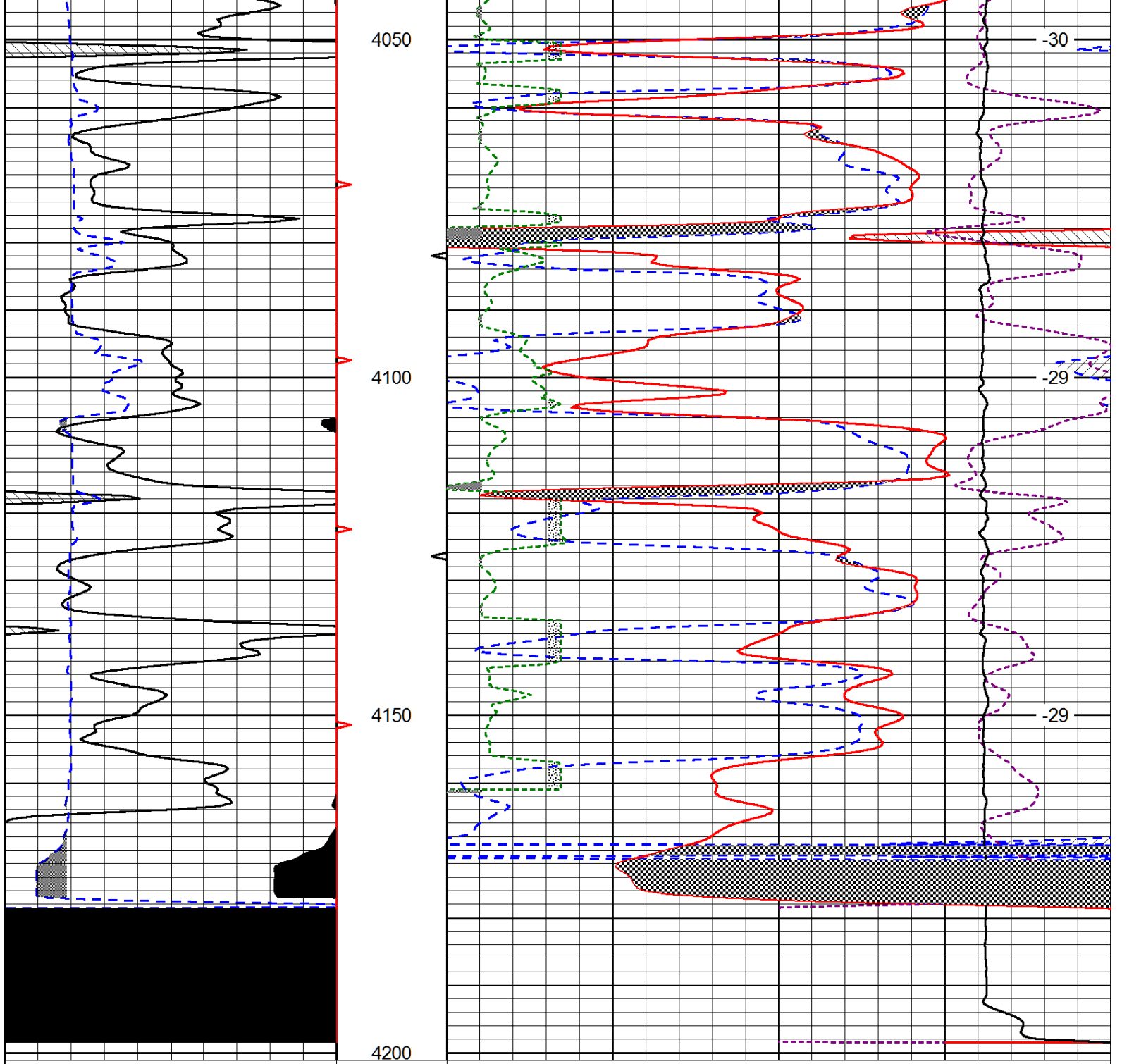
LSPD
(ft/min)











0	Gamma Ray (GAPI)	150
6	Caliper (in)	16

30	CNLS (pu)			-10	
30	Compensated Density (2.71 ma) (pu)			-10	
2.625	DGA (g/cc)	3.425	-0.25	Correction (g/cc)	0.25
10000	Line Tension (lb)			0	

LSPD
(ft/min)