



Pioneer Energy Services

Microresistivity Log

API No.	15-065-23,957-00-00		
Company	H&C Oil Operating, Inc.		
Well	North Fork Farms No.25-2		
Field			
County	Graham	State	Kansas
Location	800' FNL & 1150' FEL		
Sec: 25	Twp: 9S	Rge: 25W	Other Services CNL/CDL DIL

Permanent Datum	Ground Level	Elevation 2582	K.B. 2587
Log Measured From	Kelly Bushing	5 Ft. Above Perm. Datum	D.F. 2582
Drilling Measured From	Kelly Bushing		G.L. 2582
Date	8/1/2013		
Run Number	Two		
Depth Driller	4190		
Depth Logger	4193		
Bottom Logged Interval	4192		
Top Log Interval	3550		
Casing Driller	8.625 @ 263		
Casing Logger	264		
Bit Size	7.875		
Type Fluid in Hole	Chemical		
Salinity,ppm CL	1,600		
Density / Viscosity	9.2	60	
pH / Fluid Loss	10.0	7.6	
Source of Sample	Flowline		
Rm @ Meas. Temp	.88	@ 70	
Rmf @ Meas. Temp	.66	@ 70	
Rmc @ Meas. Temp	1.19	@ 70	
Source of Rmf / Rmc	Charts		
Rm @ BHT	.52	@ 118	
Operating Rig Time	3 1/2 Hours		
Max Rec. Temp. F	118		
Equipment Number	17		
Location	Hays		
Recorded By	C. Desaire		
Witnessed By	Marc Downing		

<<< Fold Here >>>

All interpretations are opinions based on inferences from electrical or other measurements and we cannot and do not guarantee the accuracy or correctness of any interpretation, and we shall not, except in the case of gross or willful negligence on our part, be liable or responsible for any loss, costs, damages, or expenses incurred or sustained by anyone resulting from any interpretation made by any of our officers, agents or employees. These interpretations are also subject to our general terms and conditions set out in our current Price Schedule.

Comments

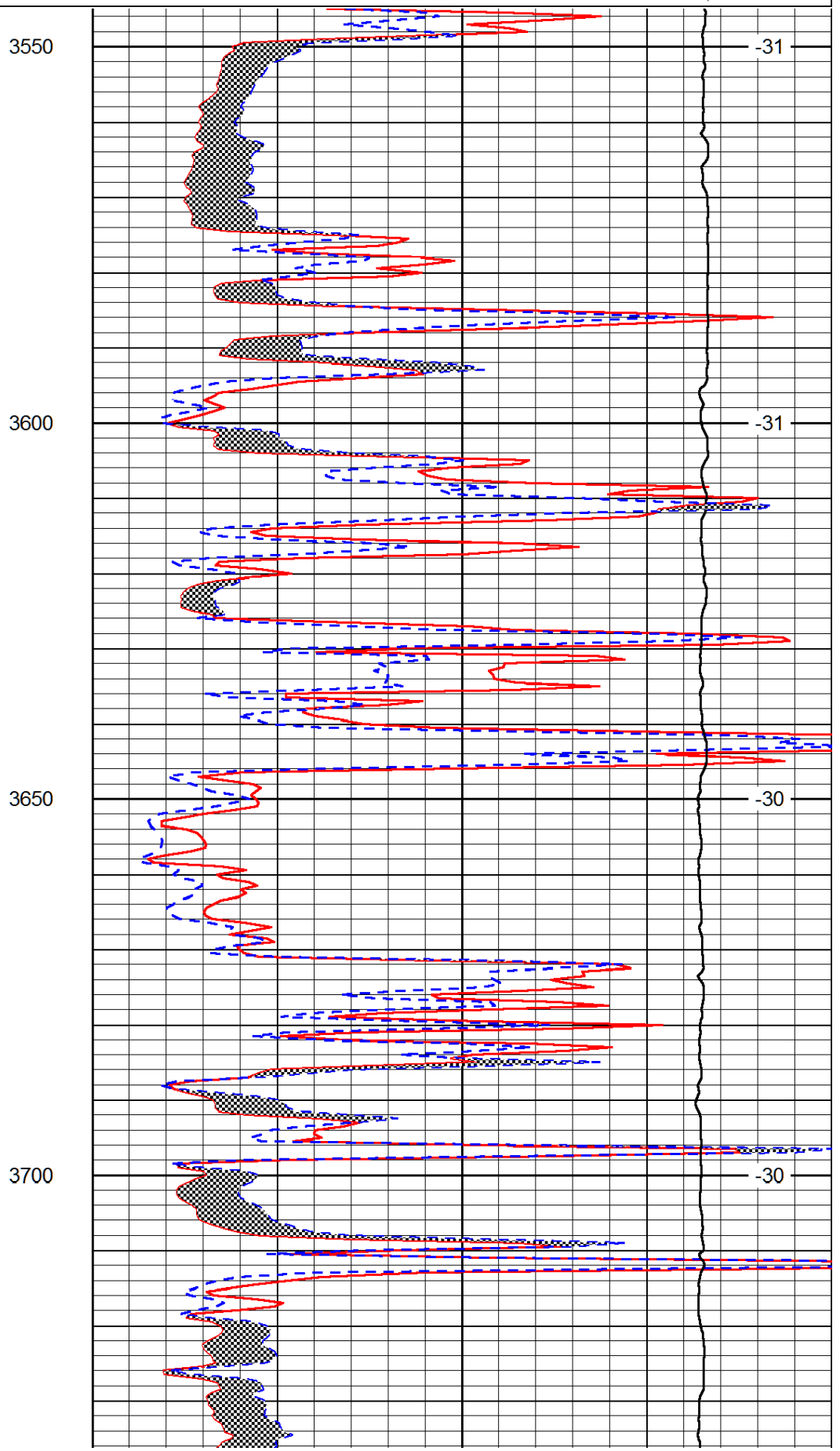
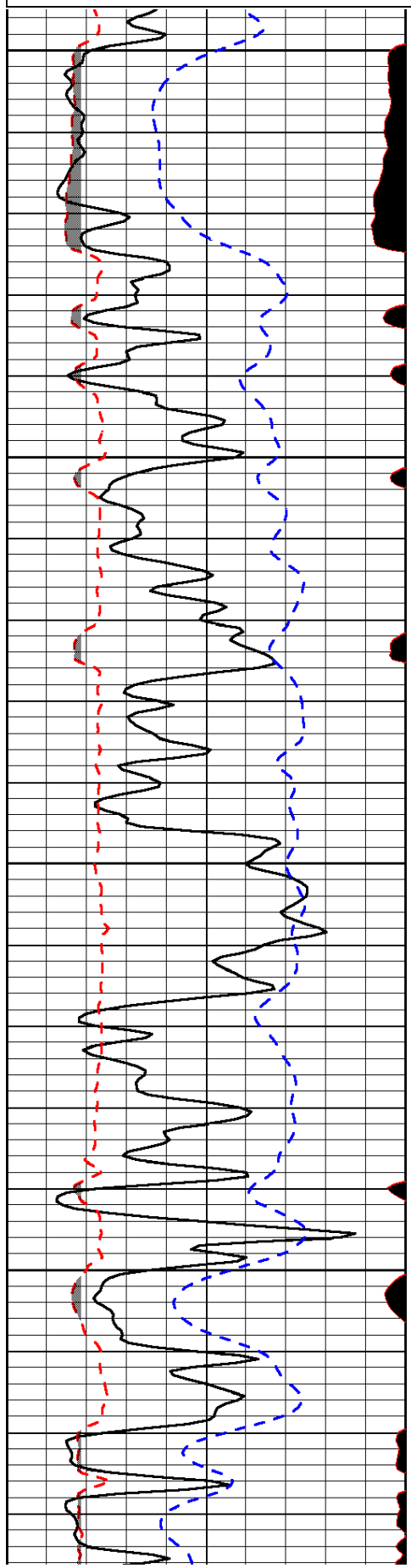
Thank you for using Log-Tech, Inc.
 (785) 625-3858
 Wakeeney KS, N to Red Line Rd,
 W to 160 Rd, 3/4 N, 1/4 W(2nd Tank Battery),
 N Into

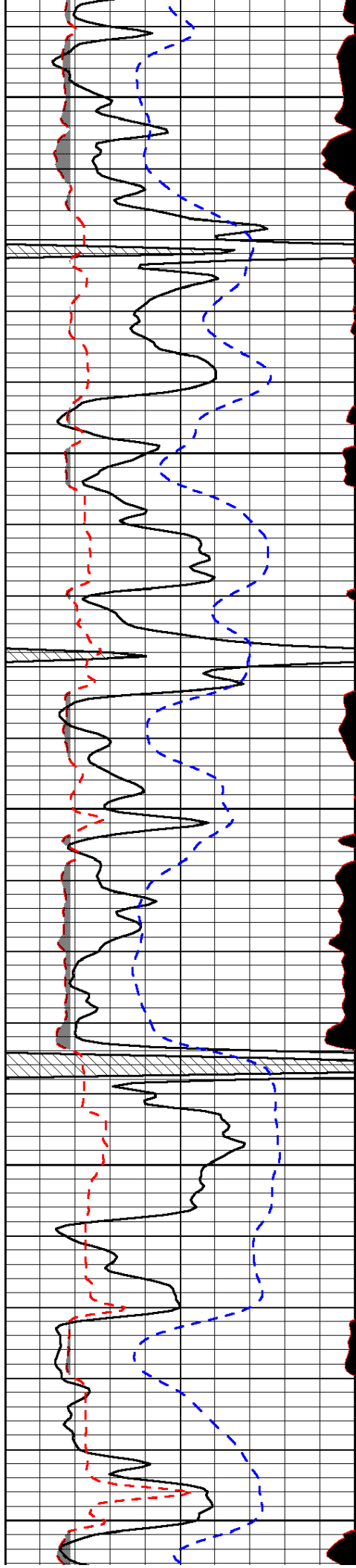
Database File: hchd.db
 Dataset Pathname: dil/hcstk
 Presentation Format: micro
 Dataset Creation: Thu Aug 01 07:54:25 2013
 Charted by: Depth in Feet scaled 1:240

0	Gamma Ray (GAPI)	150
6	MCAL (in)	16
2.875	Mud Cake (in)	7.875
-200	SP (mV)	0

0	Micro Inverse 1 X 1 (Ohm-m)	40
0	Micro Normal 2" (Ohm-m)	40
10000	Line Weight (lb)	0

LSPD
(ft/min)





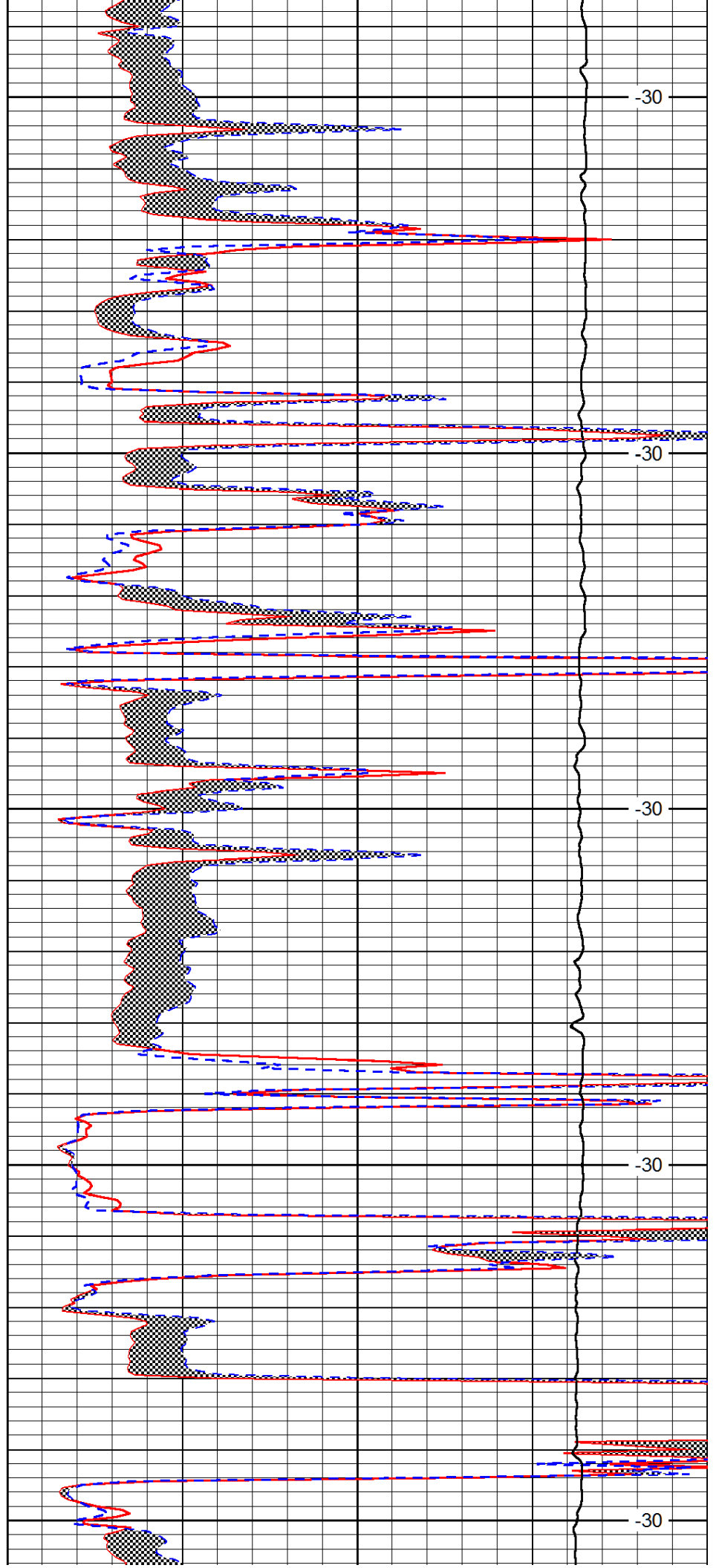
3750

3800

3850

3900

3950



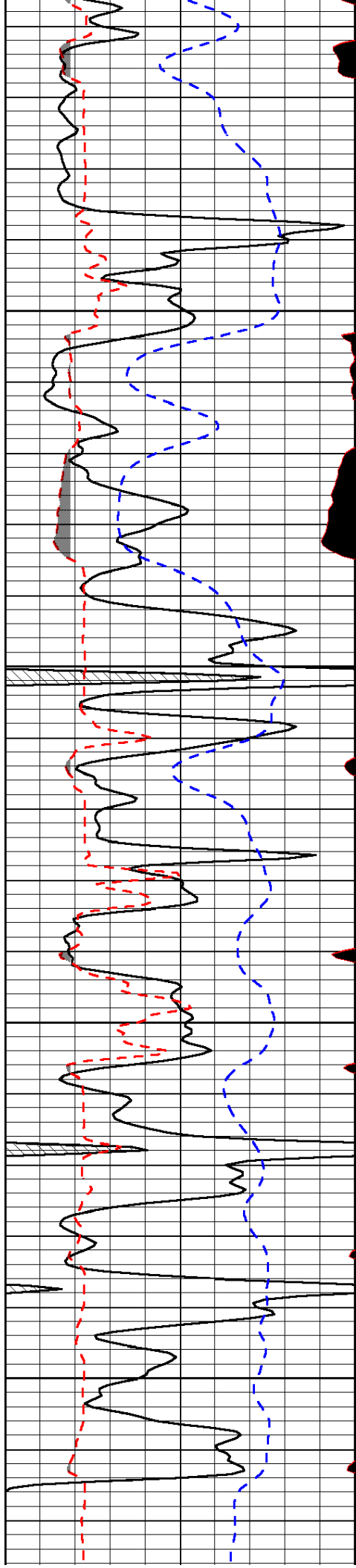
-30

-30

-30

-30

-30

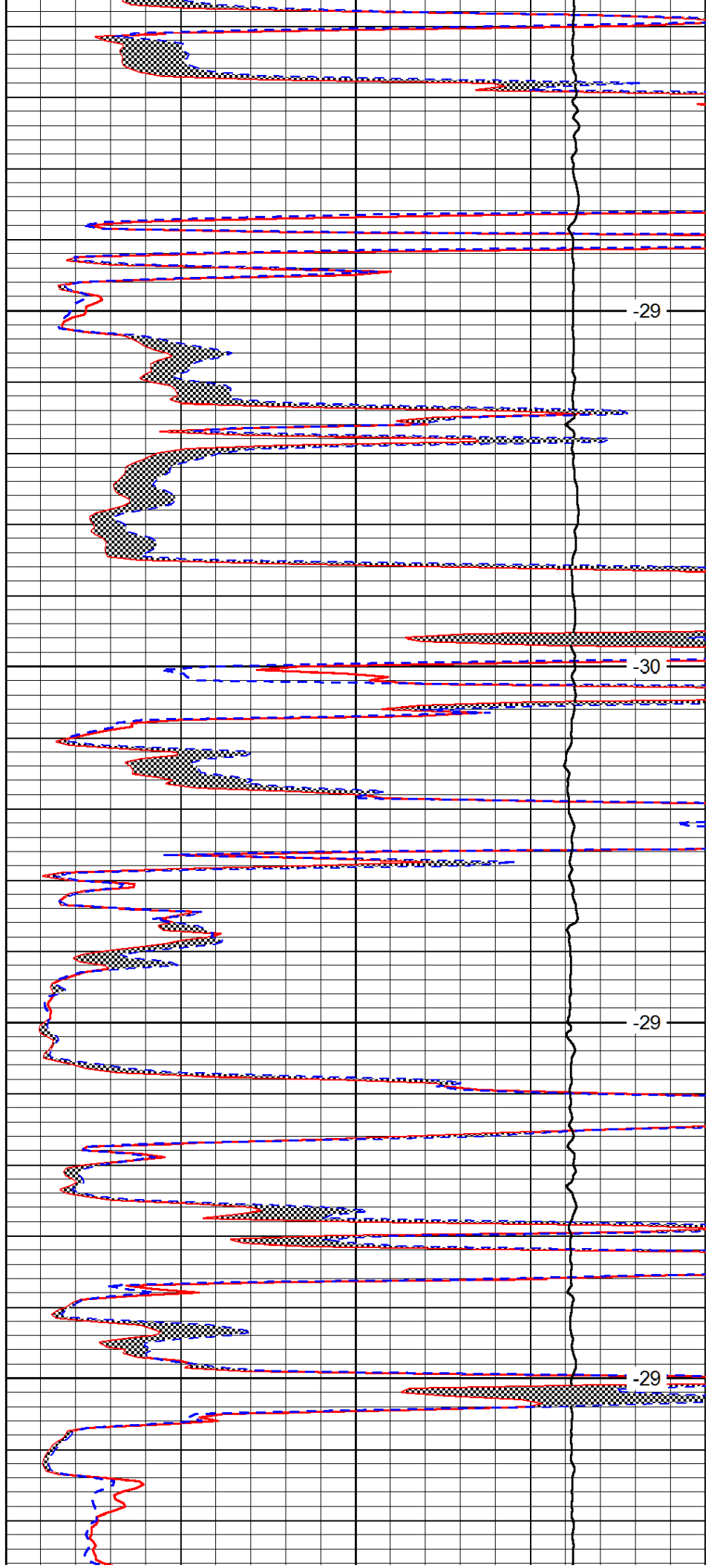


4000

4050

4100

4150

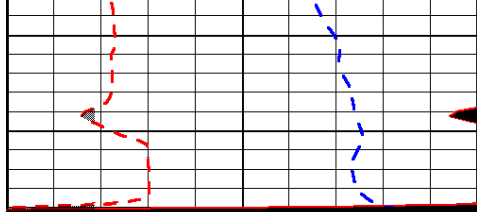


-29

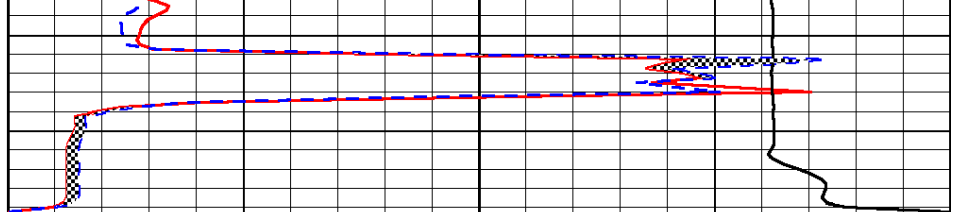
-30

-29

-29



0	Gamma Ray (GAPI)	150
6	MCAL (in)	16
2.875	Mud Cake (in)	7.875
-200	SP (mV)	0



0	Micro Inverse 1 X 1 (Ohm-m)	40
0	Micro Normal 2" (Ohm-m)	40
10000	Line Weight (lb)	0

LSPD
(ft/min)