



**COMPLETION
& PRODUCTION
SERVICES CO.**

**COMPENSATED
DENSITY / NEUTRON
PE LOG**

Company VINCENT OIL CORP.
Well FORD CO L&C #1-16
Field WILD CAT
County FORD
State KANSAS

Company VINCENT OIL CORPORATION
Well FORD CO L&C #1-16
Field WILD CAT
County FORD State KANSAS

Location: API # : 15-057-20883-0000
455' FNL& 2055' FVL
SW - NE - NE - NW
SEC 16 TWP 29S RGE 24W
Permanent Datum GROUND LEVEL Elevation 2536
Log Measured From KELLY BUSHING 12' A.G.L.
Drilling Measured From KELLY BUSHING
Other Services
DIL
MEL/SON
Elevation
K.B. 2548
D.F. 2546
G.L. 2536

Date	4/14/13		
Run Number	ONE		
Depth Driller	5360		
Depth Logger	5360		
Bottom Logged Interval	5336		
Top Log Interval	4150		
Casing Driller	8 5/8" @ 646'		
Casing Logger	646'		
Bit Size	7 7/8"		
Type Fluid in Hole	CHEMICAL MUD	CHLORIDES 10,400 PPM	
Density / Viscosity	9.3/50		
pH / Fluid Loss	11.0/10.8		
Source of Sample	FLOWLINE		
Rim @ Meas. Temp	0.40 @ 79F		
Rmf @ Meas. Temp	0.30 @ 79F		
Rmc @ Meas. Temp	0.48 @ 79F		
Source of Rmf / Rmc	MEASUREMENT		
Rim @ BHT	0.25 @ 128F		
Time Circulation Stopped	2 HOURS		
Time Logger on Bottom			
Maximum Recorded Temperature	128F		
Equipment Number	4854		
Location	HAYS, KANSAS		
Recorded By	JEFF GRONEMEG		
Witnessed By	JIM HALL		

<<< Fold Here >>>

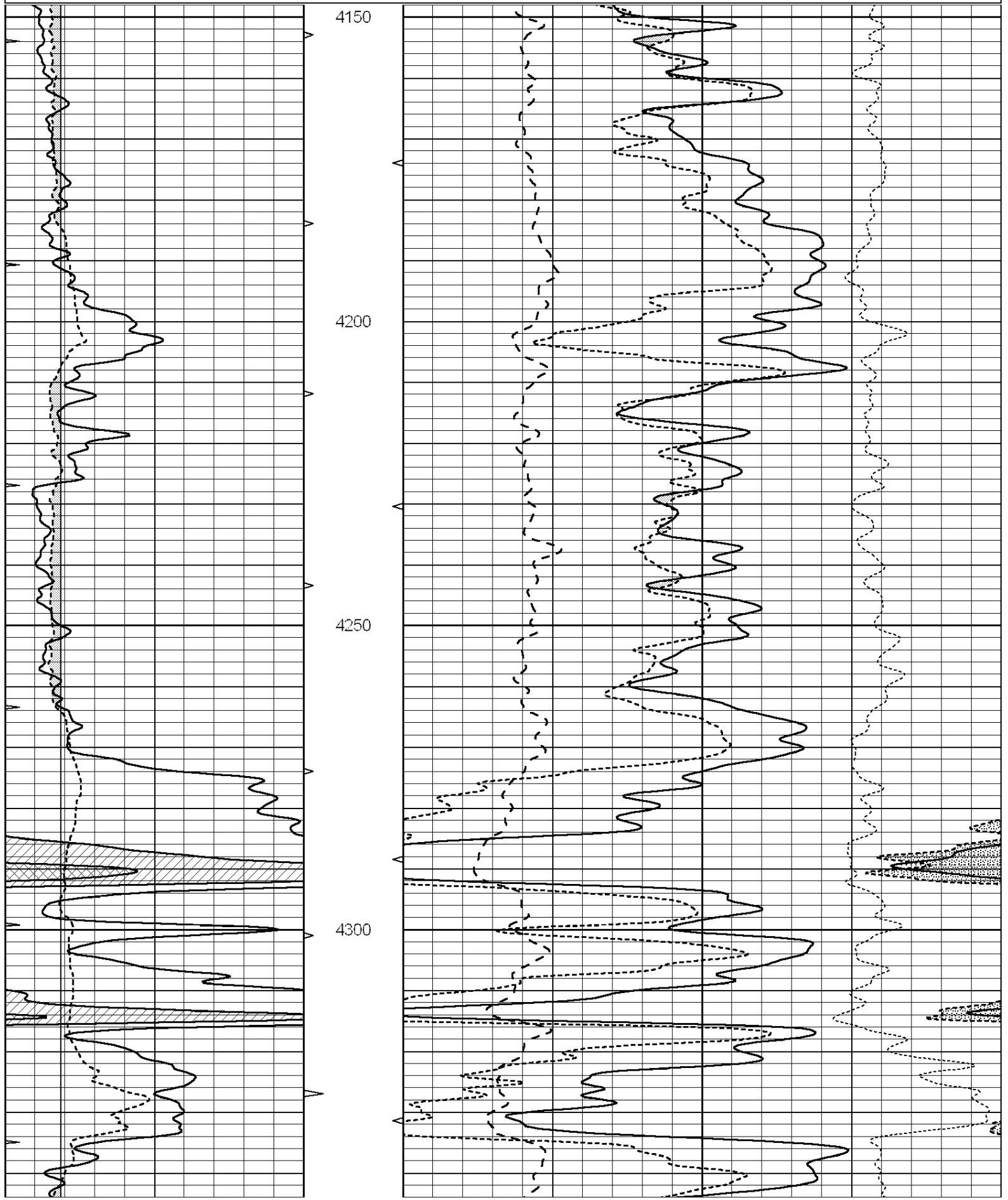
All interpretations are opinions based on inferences from electrical or other measurements and we cannot and do not guarantee the accuracy or correctness of any interpretation, and we shall not, except in the case of gross or willful negligence on our part, be liable or responsible for any loss, costs, damages, or expenses incurred or sustained by anyone resulting from any interpretation made by any of our officers, agents or employees. These interpretations are also subject to our general terms and conditions set out in our current Price Schedule.

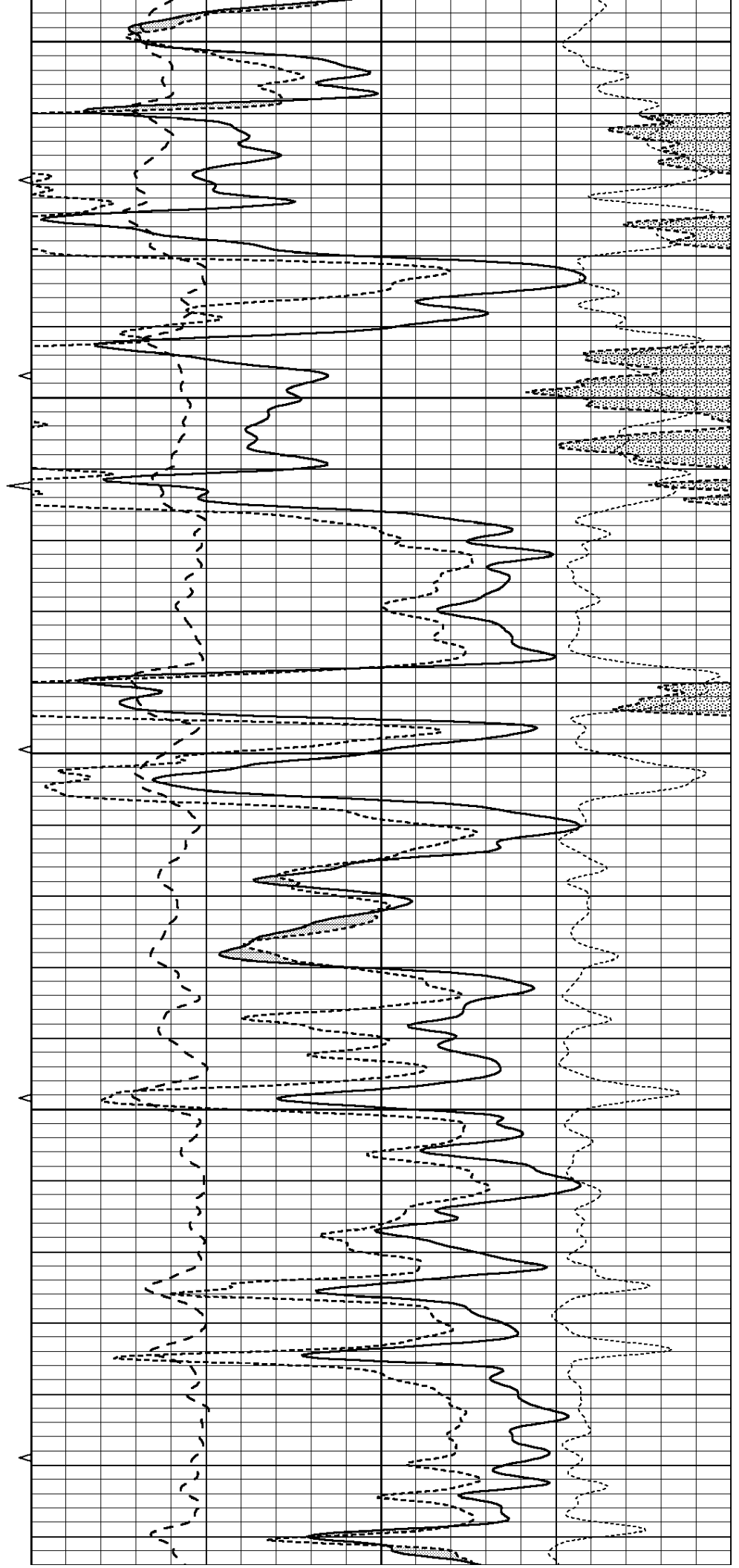
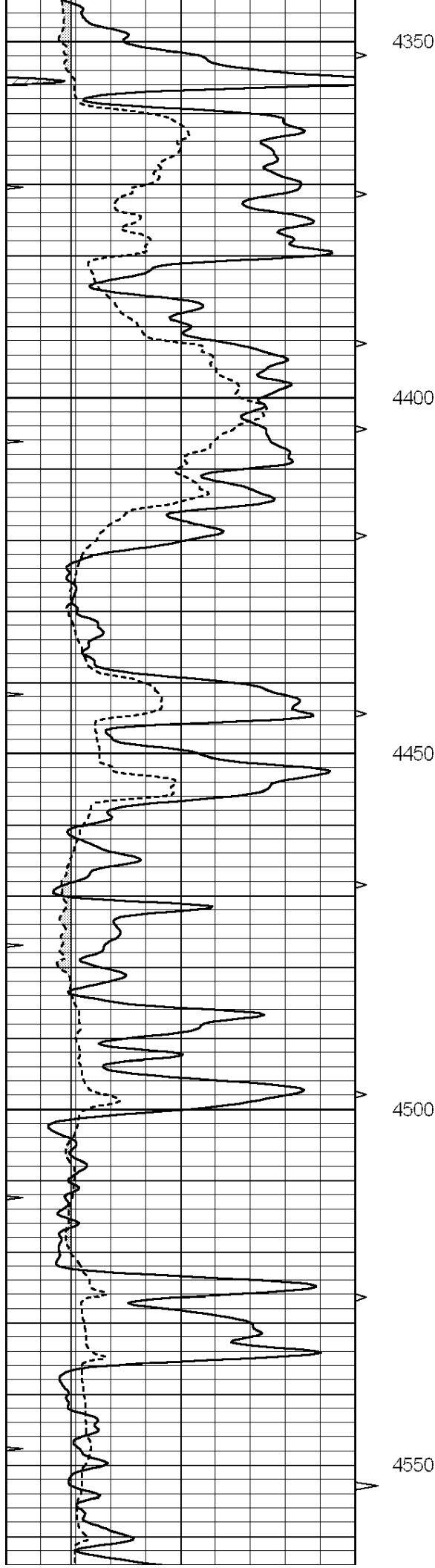
Comments

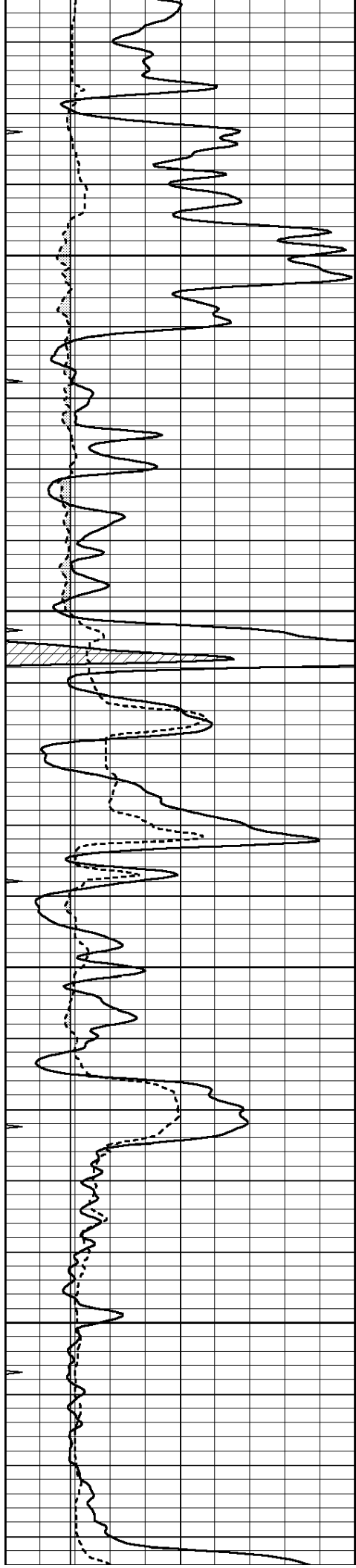
THANK YOU FOR USING "NABORS" HAYS, KANSAS (785) 628-6395
DIRECTIONS
DODGE CITY, KS - SOUTH TO WINDY RD - 3 1/2 MILES EAST
SOUTH INTO

Database File: 010738pe.db
Dataset Pathname: pass3.2
Presentation Format: _ldt_neu
Dataset Creation: Sun Apr 14 21:14:32 2013 by Calc SOC 120430
Charted by: Depth in Feet scaled 1:240

0	GAMMA RAY (GAPI)	150	ABHV	30	COMPENSATED DENSITY (pu)	-10		
6	CALIPER (in)	16	10 (ft3)	0	30	COMPENSATED NEUTRON (pu)	-10	
0	MINMK	20	TBHV	0	PE	10 -0.25	CORRECTION (g/cc)	0.25
			0 (ft3)	10				





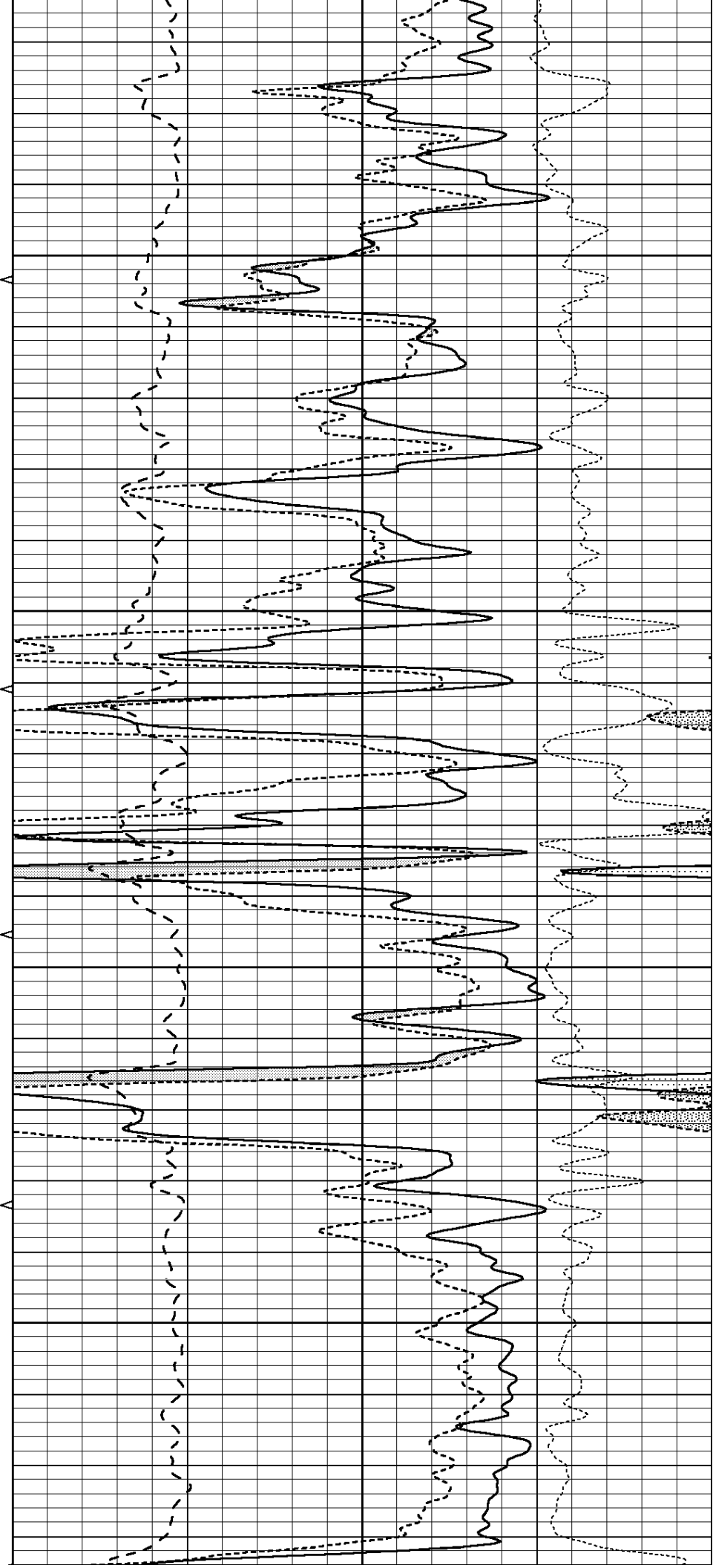


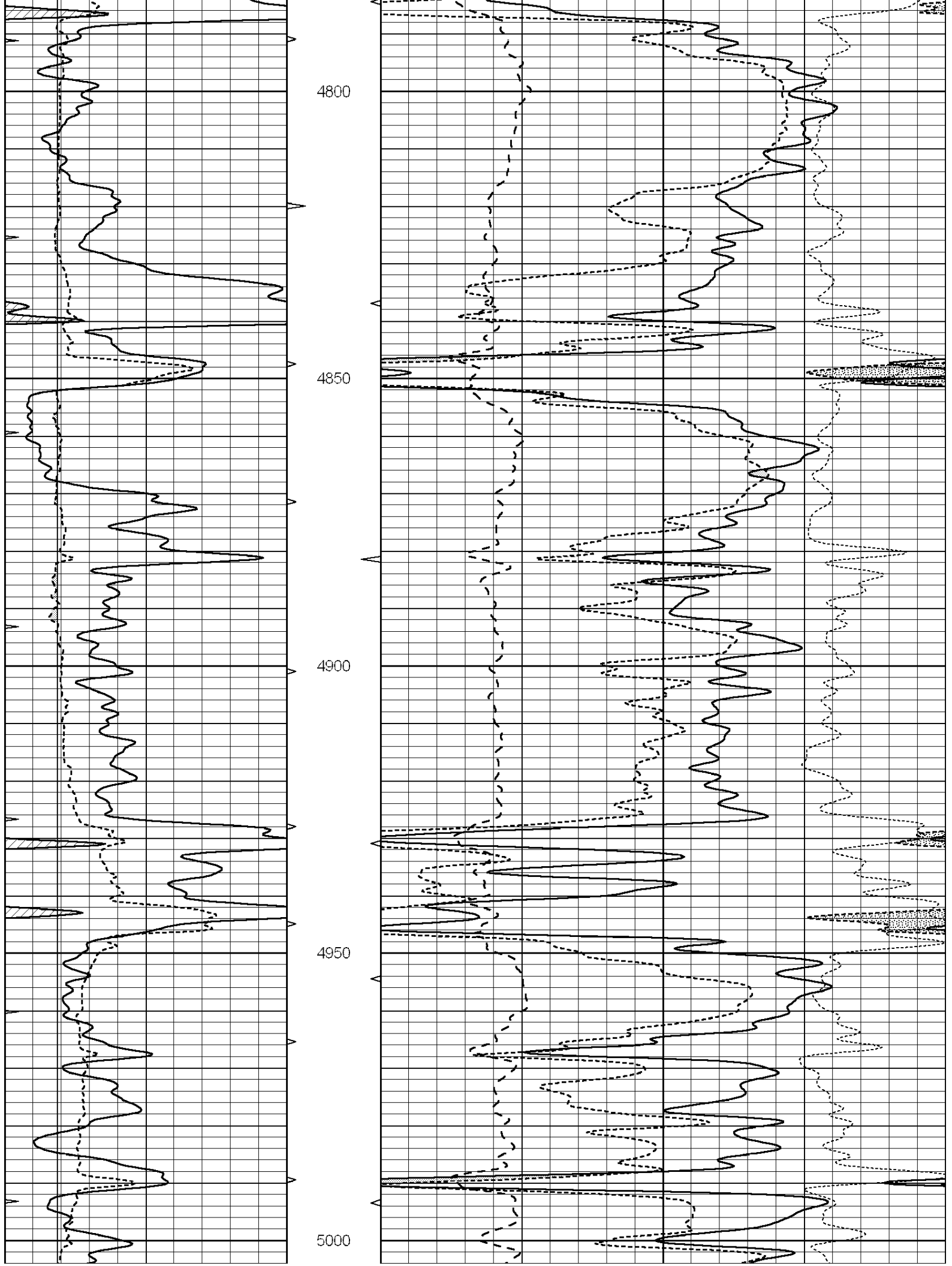
4600

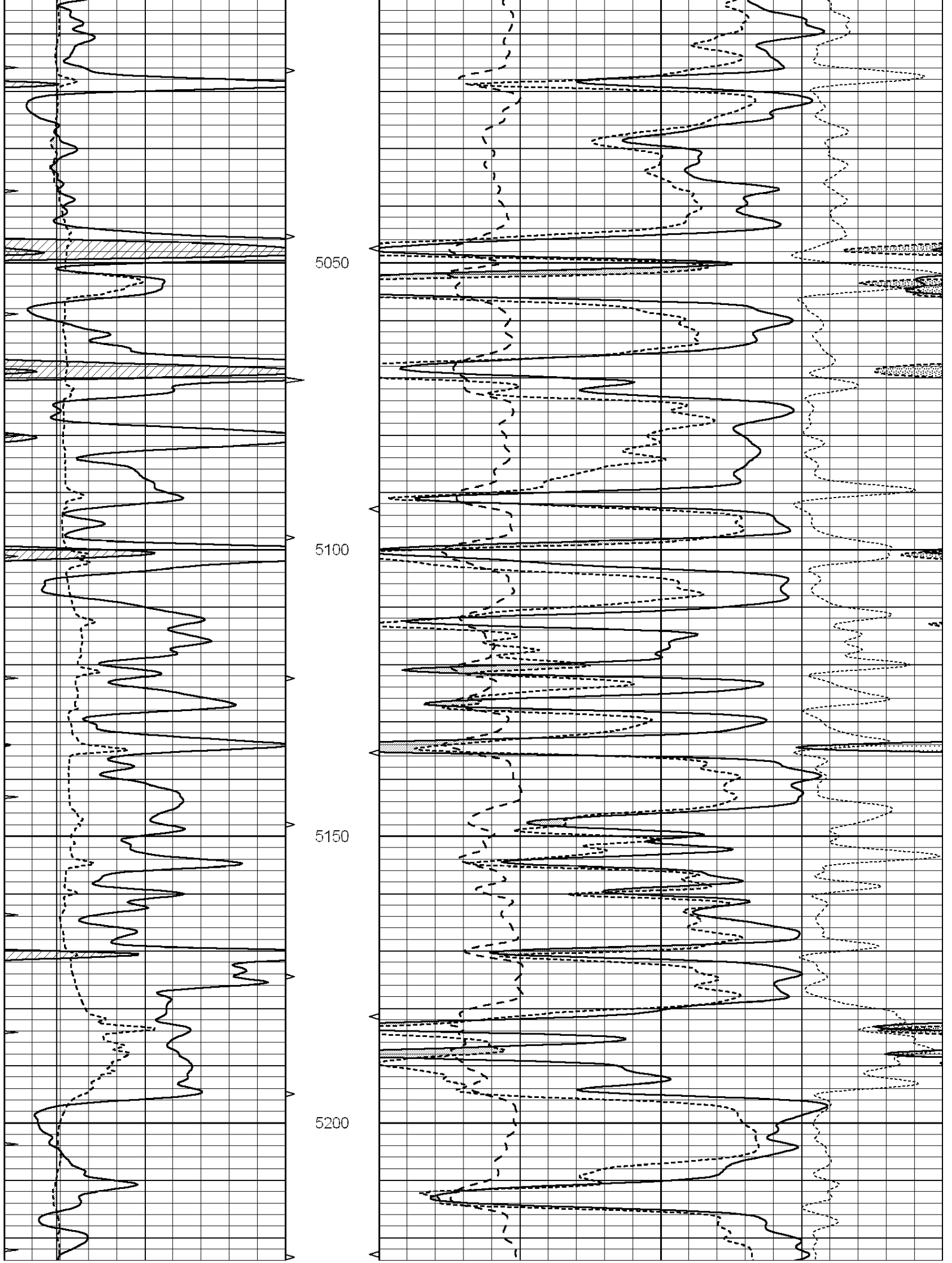
4650

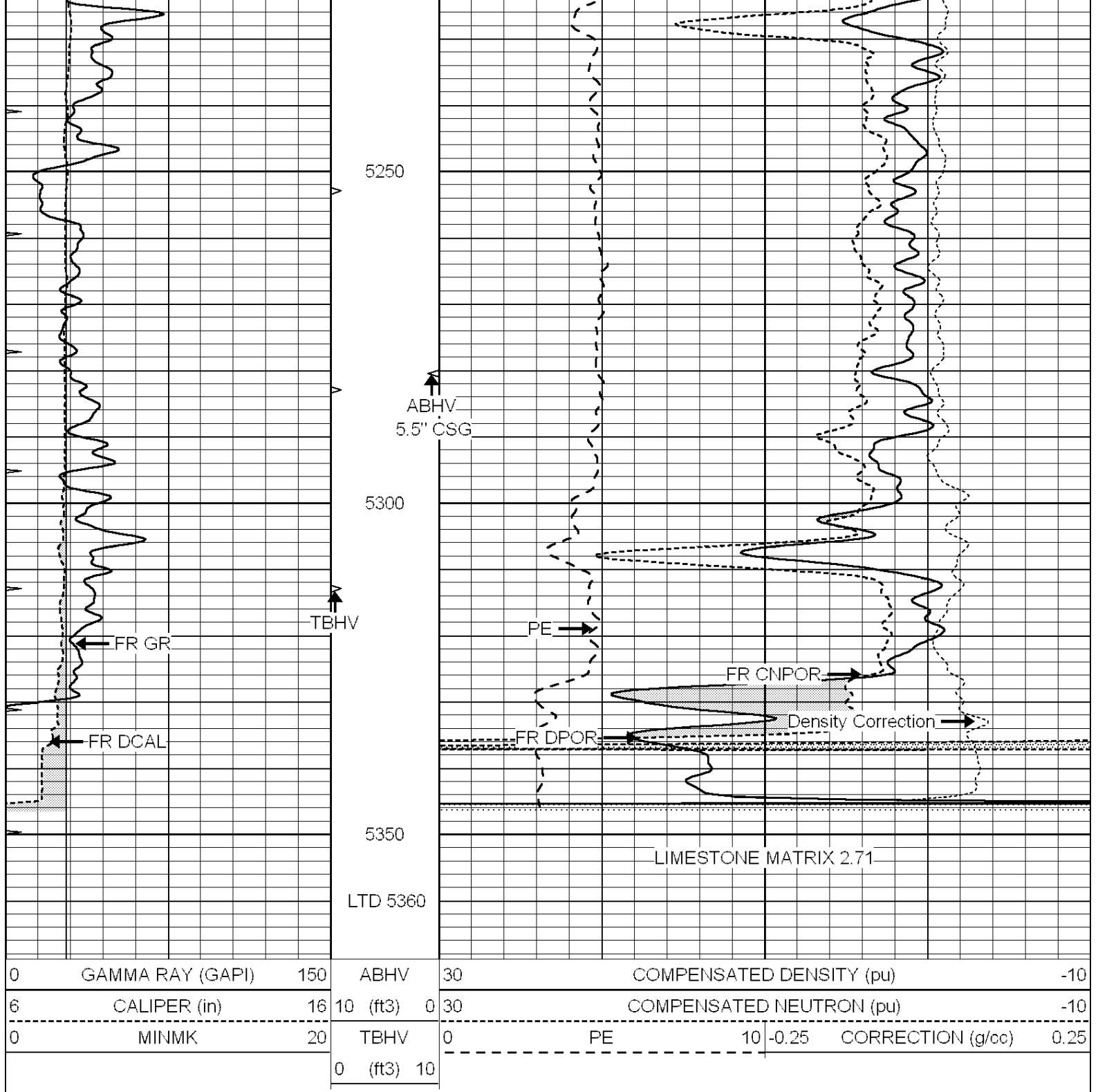
4700

4750





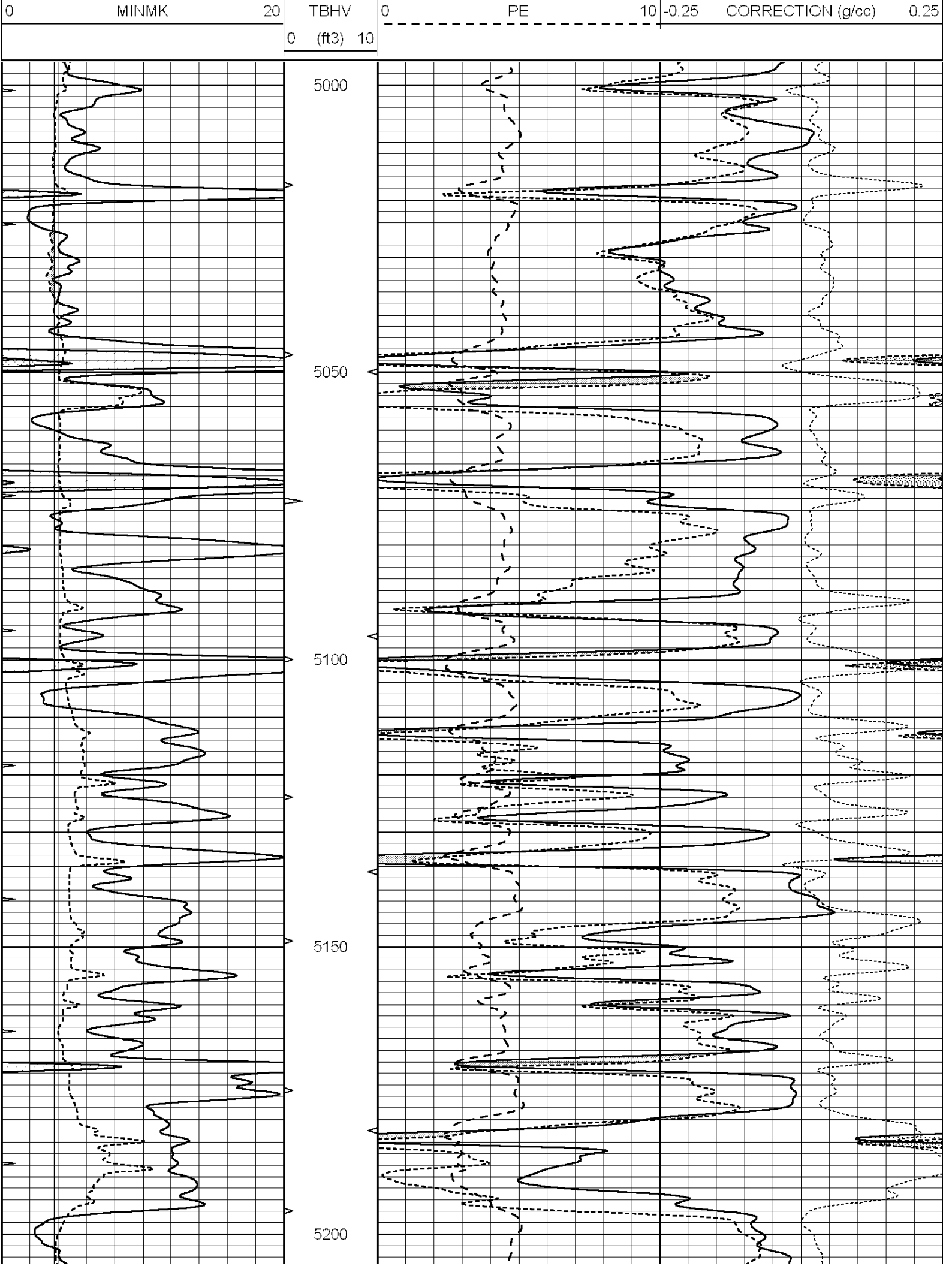


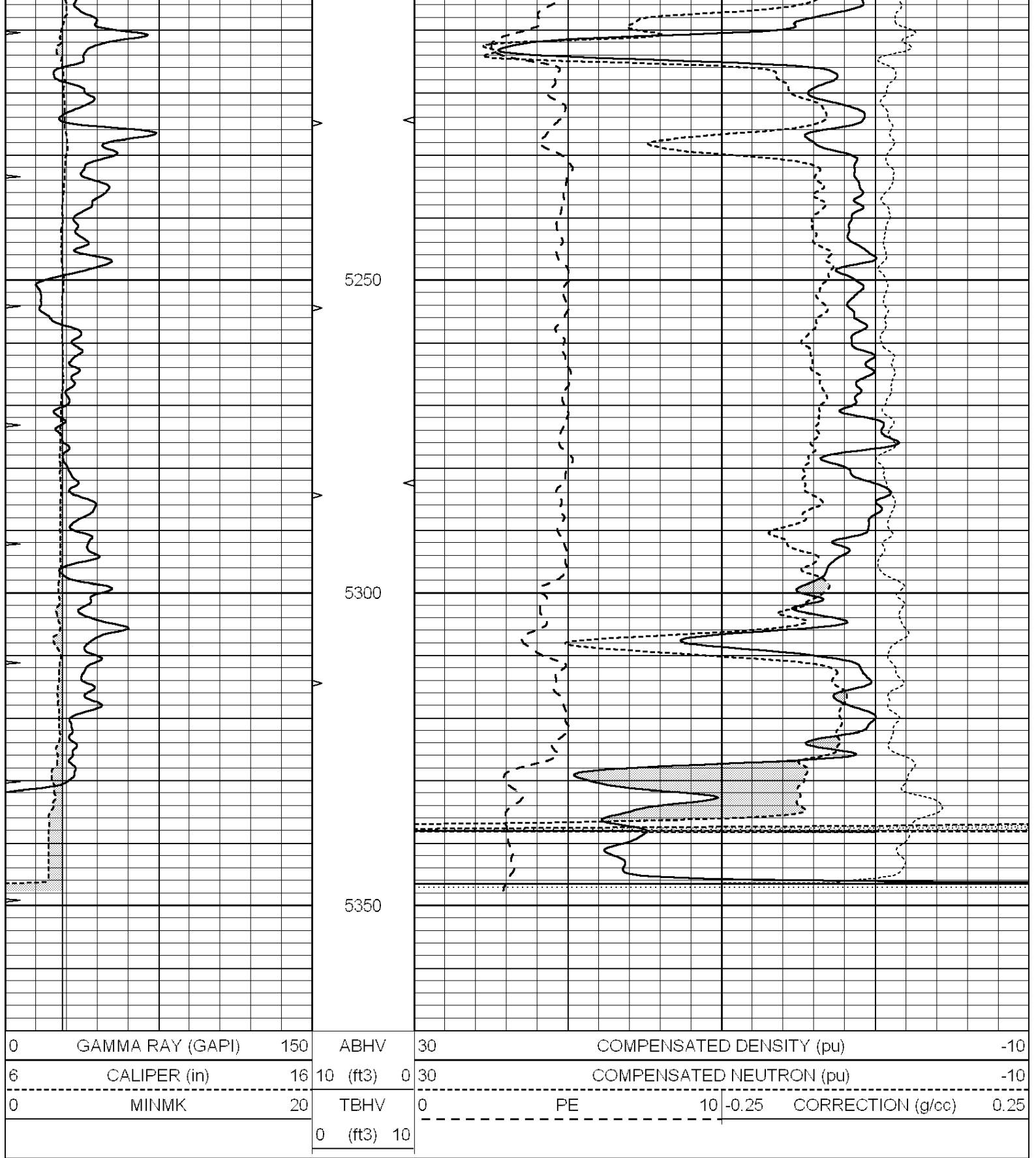


REPEAT SECTION

Database File: 010738pe.db
 Dataset Pathname: pass2.1
 Presentation Format: _ldt_neu
 Dataset Creation: Sun Apr 14 20:25:24 2013 by Calc SOC 120430
 Charted by: Depth in Feet scaled 1:240

0	GAMMA RAY (GAPI)	150	ABHV	30	COMPENSATED DENSITY (pu)	-10	
6	CALIPER (in)	16	10 (ft3)	0	30	COMPENSATED NEUTRON (pu)	-10





Calibration Report

Database File: 010738pe.db
 Dataset Pathname: pass3.2
 Dataset Creation: Sun Apr 14 21:14:32 2013 by Calc SOC 120430

Dual Induction Calibration Report

Serial-Model: PROBE9-DILG
 Surface Cal Performed: Sun Mar 10 00:44:14 2013

Surface Calibration								
Loop:	Readings			References			Results	
	Air	Loop		Air	Loop		m	b
Deep	-0.014	0.629	V	0.000	400.000	mmho/m	621.923	-11.000
Medium	0.039	0.728	V	0.000	464.000	mmho/m	640.000	-19.000
Internal:	Zero	Cal		Zero	Cal		m	b
Deep	0.011	0.610	V	0.000	400.000	mmho/m	667.135	-7.256
Medium	0.005	0.712	V	0.000	464.000	mmho/m	655.677	-3.102

Downhole Calibration								
	Readings			References			Results	
	Zero	Cal		Zero	Cal		m'	b'
Deep	0.000	0.000	mmho/m	14.508	388.384	mmho/m	1.000	0.000
Medium	0.000	0.000	mmho/m	166.367	504.400	mmho/m	1.000	0.000
LL3		7.500	V		1400.000	Ohm-m		
		0.000	V		20.000	Ohm-m		
		-7.200	V		4000.000	mmho-m		

After Survey Verification								
	Readings			Targets			Results	
	Zero	Cal		Zero	Cal		m'	b'
Deep	0.000	0.000	mmho/m	0.000	0.000	mmho/m	0.000	0.000
Medium	0.000	0.000	mmho/m	0.000	0.000	mmho/m	0.000	0.000
LL3		1.000	Ohm-m		1.000	Ohm-m		
		0.000	Ohm-m		0.000	Ohm-m		
		1.000	mmho-m		1.000	mmho-m		

Litho Density Calibration Report
Serial: 006 Model: PRB

Master Calibration								
Performed Sun Aug 15 09:48:41 2010								
	Background	Magnesium	Aluminum	Sandstone				
Window 1	1686.6	11612.8	3932.0	12718.8				cps
Window 2	1531.4	9204.7	3267.8	9851.9				cps
Window 3	1198.3	4733.6	1952.5	4920.6				cps
Window 4	317.3	321.2	325.9	303.6				cps
Long Space	0.0	7673.3	1736.4	8320.4				cps
Short Space	1.7	2548.5	1657.2	2628.8				cps
Rho		1.7100	2.5900	1.3800				g/cc
Pe		0.0000	2.5700	1.5500				
Rib Angle	: 43.8	Rib Slope	: 0.961	Density/Spine Ratio			: 0.569	
Spine Angle	: 73.8	Spine Slope	: 3.453	Spine Intercept			: -18.1	

Before Survey Verification								
Performed Wed Dec 31 18:00:00 1969								
	Background	Magnesium	Aluminum	Sandstone				
Window 1	0.0	0.0	0.0	0.0				cps
Window 2	0.0	0.0	0.0	0.0				cps
Window 3	0.0	0.0	0.0	0.0				cps
Window 4	0.0	0.0	0.0	0.0				cps
Long Space	0.0	0.0	0.0	0.0				cps
Short Space	0.0	0.0	0.0	0.0				cps
Measured Rho		0.0000	0.0000	0.0000				g/cc
Measured Correction		0.0000	0.0000	0.0000				g/cc

Measured Correction	0.0000	0.0000	0.0000	g/cc
Measured Pe		0.0000	0.0000	

After Survey Verification

Performed Wed Dec 31 18:00:00 1969

Window 1	0.0	0.0	0.0	0.0	cps
Window 2	0.0	0.0	0.0	0.0	cps
Window 3	0.0	0.0	0.0	0.0	cps
Window 4	0.0	0.0	0.0	0.0	cps
Long Space	0.0	0.0	0.0	0.0	cps
Short Space	0.0	0.0	0.0	0.0	cps
Measured Rho		0.0000	0.0000	0.0000	g/cc
Measured Correction		0.0000	0.0000	0.0000	g/cc
Measured Pe			0.0000	0.0000	

Compensated Neutron Calibration Report

Serial Number: 070808
 Tool Model: Probe

PRE-SURVEY VERIFICATION

Detector	Readings	Measured	Target
Short Space	cps		
Long Space	cps	pu	pu

POST-SURVEY VERIFICATION

Detector	Readings	Measured	Target
Short Space	cps		
Long Space	cps	pu	pu

Gamma Ray Calibration Report

Serial Number: 070559
 Tool Model: OPEN_GR
 Performed: Sun Apr 07 04:15:47 2013

Calibrator Value: 1.0 GAPI

Background Reading: 0.0 cps
 Calibrator Reading: 1.0 cps

Sensitivity: 0.3500 GAPI/cps