



**COMPLETION
& PRODUCTION
SERVICES CO.**

**MICRO
LOG**

Company VINCENT OIL CORP.
Well FORD CO L&C #1-16
Field WILDCAT
County FORD
State KANSAS

Company VINCENT OIL CORPORATION
Well FORD CO L&C #1-16
Field WILDCAT
County FORD State KANSAS

Location: API # : 15-057-20883-0000
455' FNL& 2055' FWL
SW - NE - NE - NW
SEC 16 TWP 29S RGE 24W
Permanent Datum GROUND LEVEL Elevation 2536
Log Measured From KELLY BUSHING 12' A.G.L.
Drilling Measured From KELLY BUSHING
Other Services
CDL/CNL/PE
DIL/SON
Elevation
K.B. 2548
D.F. 2546
G.L. 2536

Date	4/14/13
Run Number	TWO
Depth Driller	5360
Depth Logger	5360
Bottom Logged Interval	5338
Top Log Interval	4150
Casing Driller	8 5/8" @ 646'
Casing Logger	646'
Bit Size	7 7/8"
Type Fluid in Hole	CHEMICAL MUD
Density / Viscosity	9.3/50
pH / Fluid Loss	11.0/10.8
Source of Sample	FLOWLINE
Rim @ Meas. Temp	0.40 @ 79F
Rmf @ Meas. Temp	0.30 @ 79F
Rmc @ Meas. Temp	0.48 @ 79F
Source of Rmf / Rmc	MEASUREMENT
Rim @ BHT	0.25 @ 128F
Time Circulation Stopped	2 HOURS
Time Logger on Bottom	
Maximum Recorded Temperature	128F
Equipment Number	4854
Location	HAYS, KANSAS
Recorded By	JEFF GRONEMEG
Witnessed By	JIM HALL

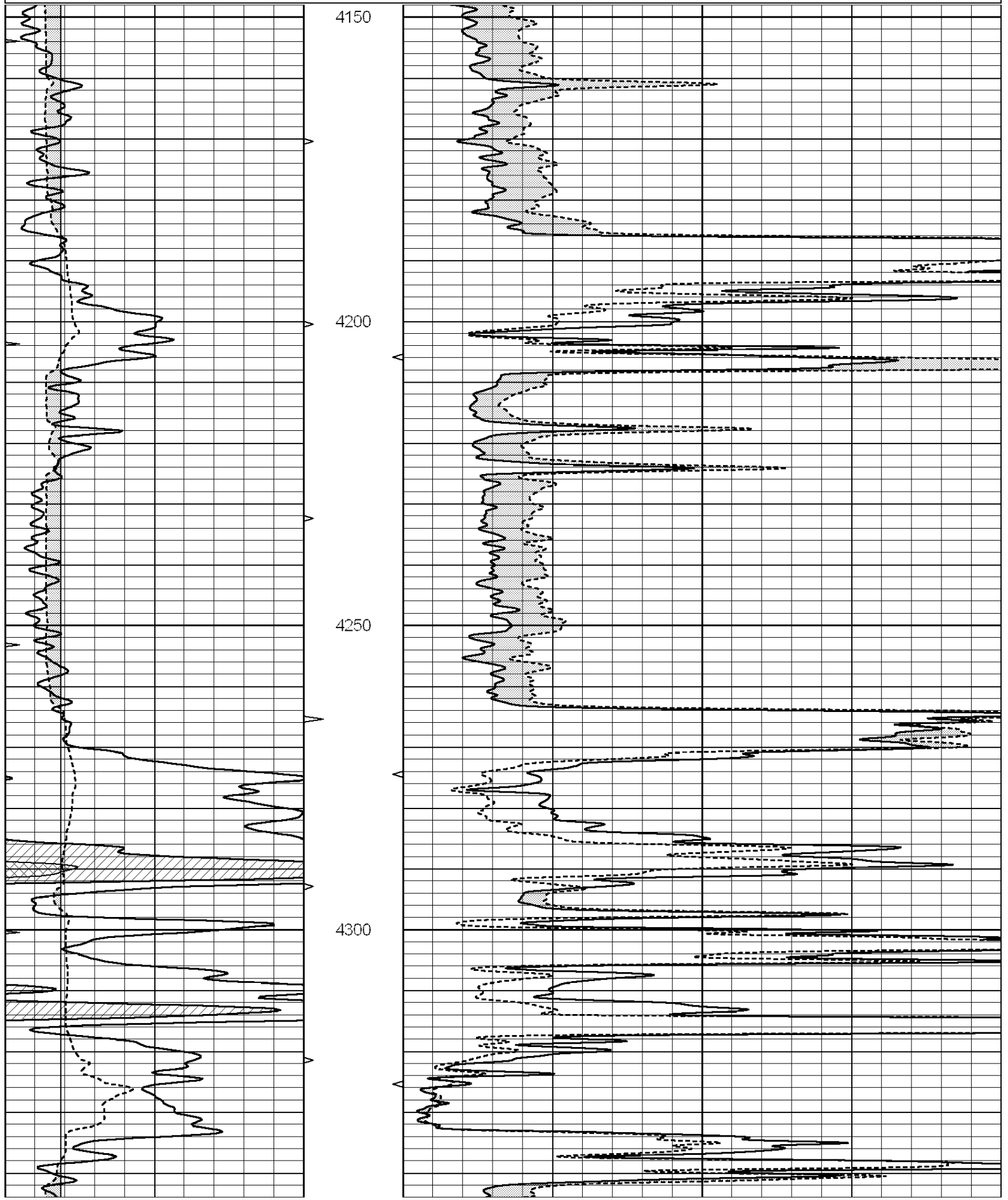
<<< Fold Here >>>

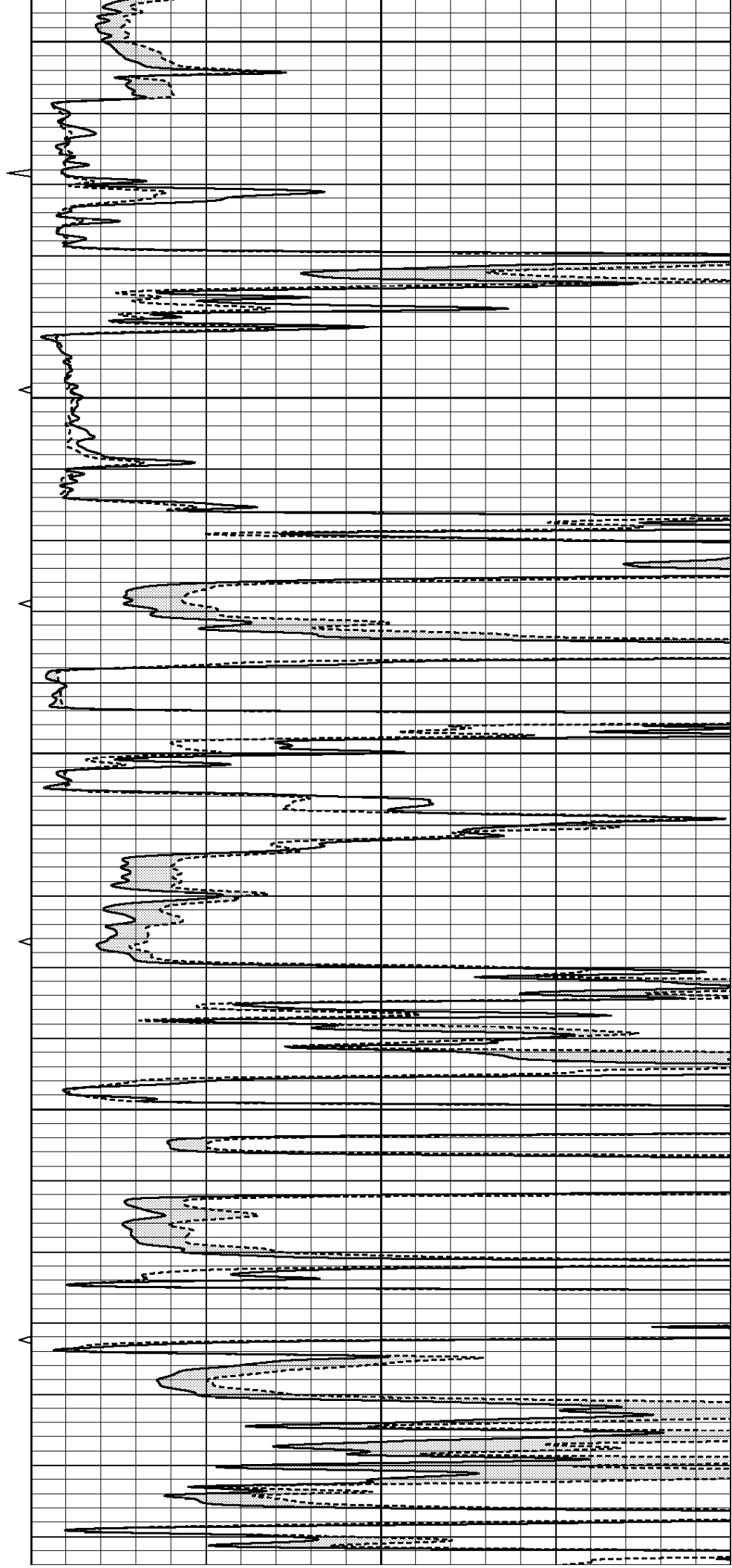
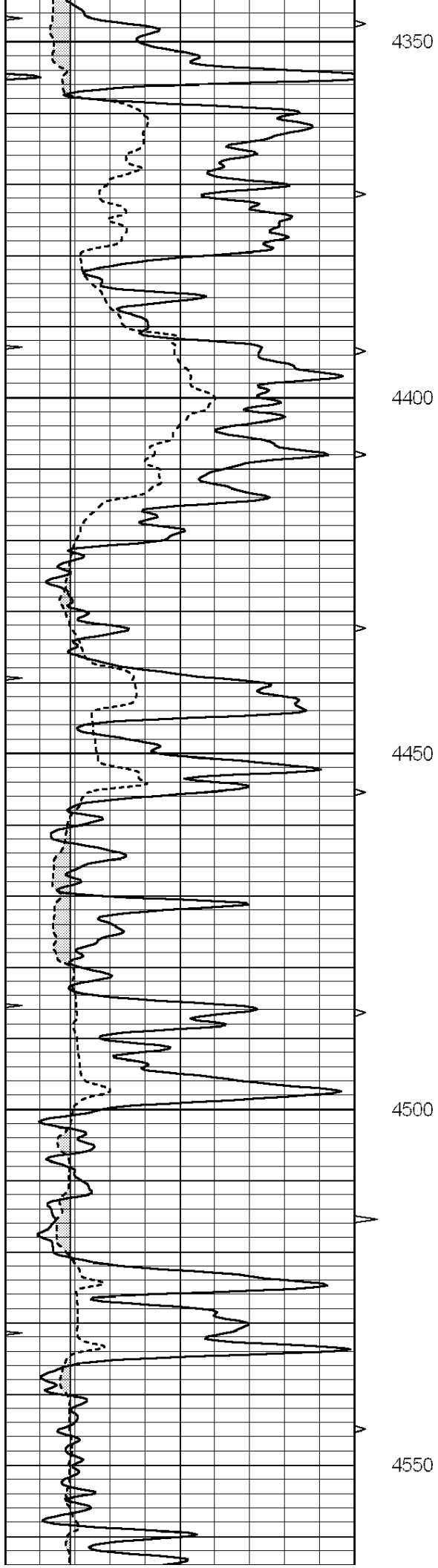
All interpretations are opinions based on inferences from electrical or other measurements and we cannot and do not guarantee the accuracy or correctness of any interpretation, and we shall not, except in the case of gross or willful negligence on our part, be liable or responsible for any loss, costs, damages, or expenses incurred or sustained by anyone resulting from any interpretation made by any of our officers, agents or employees. These interpretations are also subject to our general terms and conditions set out in our current Price Schedule.

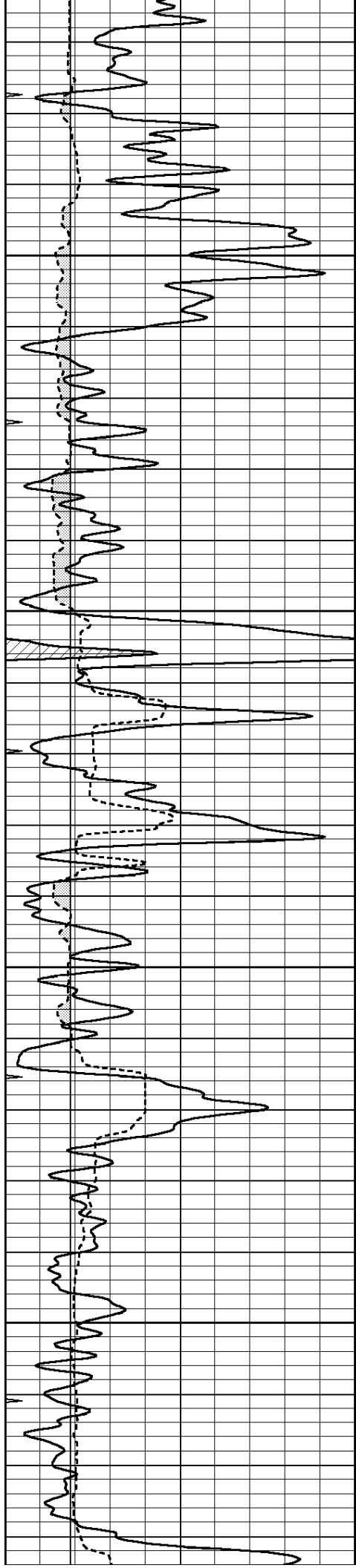
Comments

THANK YOU FOR USING "NABORS" HAYS, KANSAS (785) 628-6395
DIRECTIONS
DODGE CITY, KS - SOUTH TO WINDY RD - 3 1/2 MILES EAST
SOUTH INTO

0	GAMMA RAY (GAPI)	150	ABHV	0	MEL1.5 (Ohm-m)	40
6	CALIPER (in)	16	10 (ft3)	0	MEL2.0 (Ohm-m)	40
0	MINMK	20	TBHV			
			0 (ft3)	10		





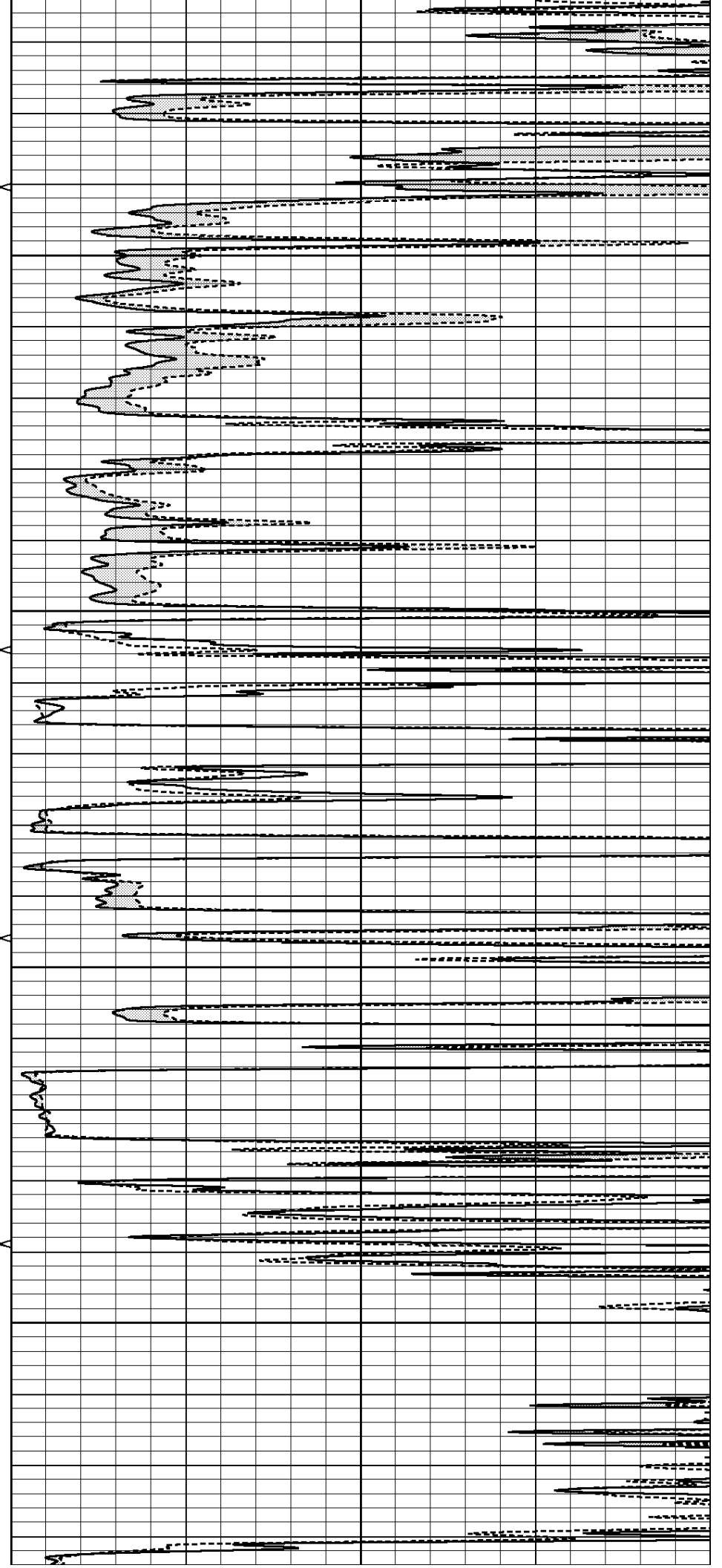


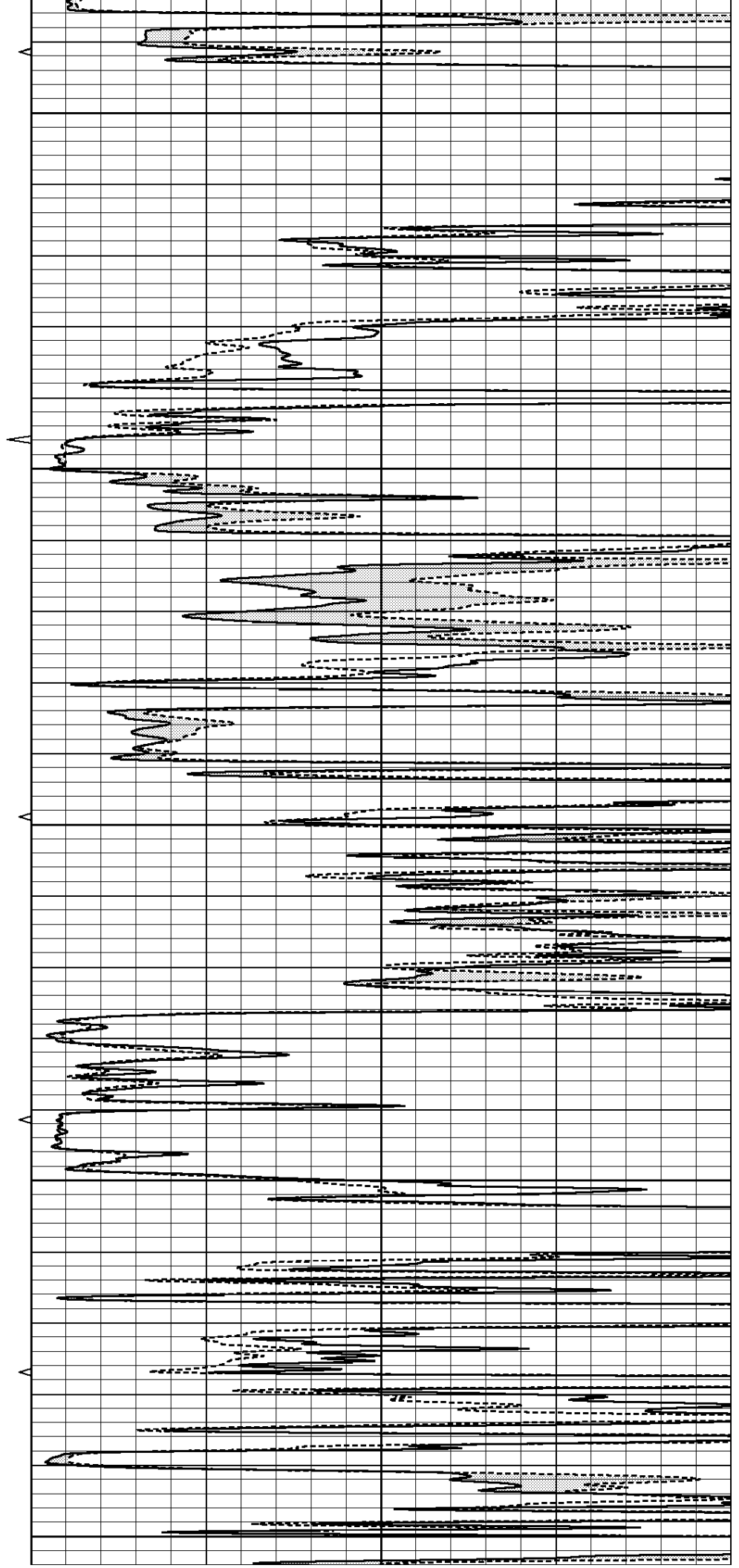
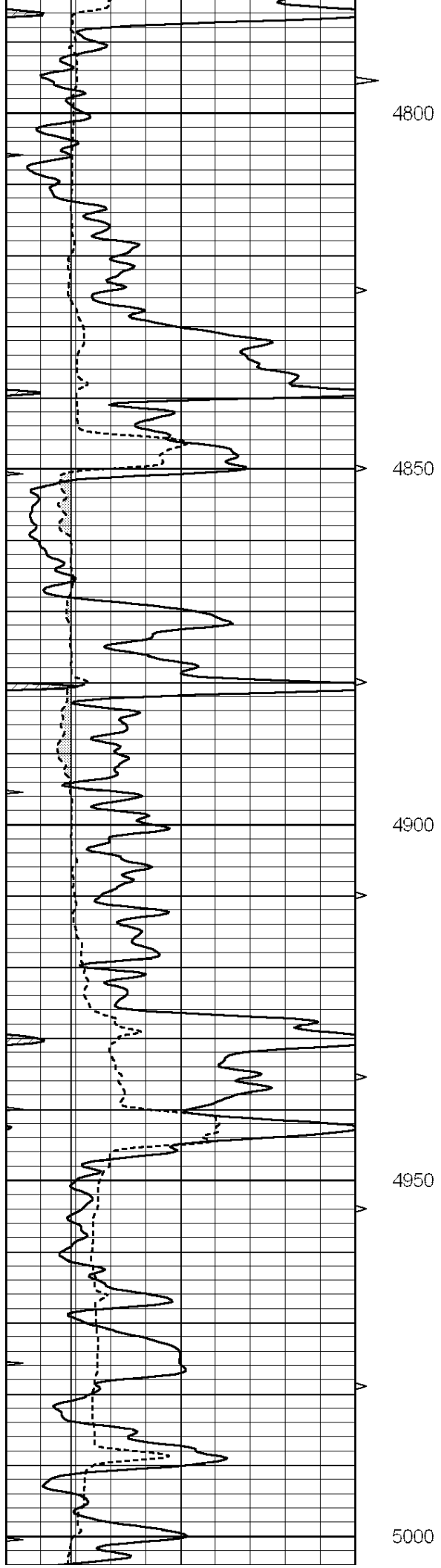
4600

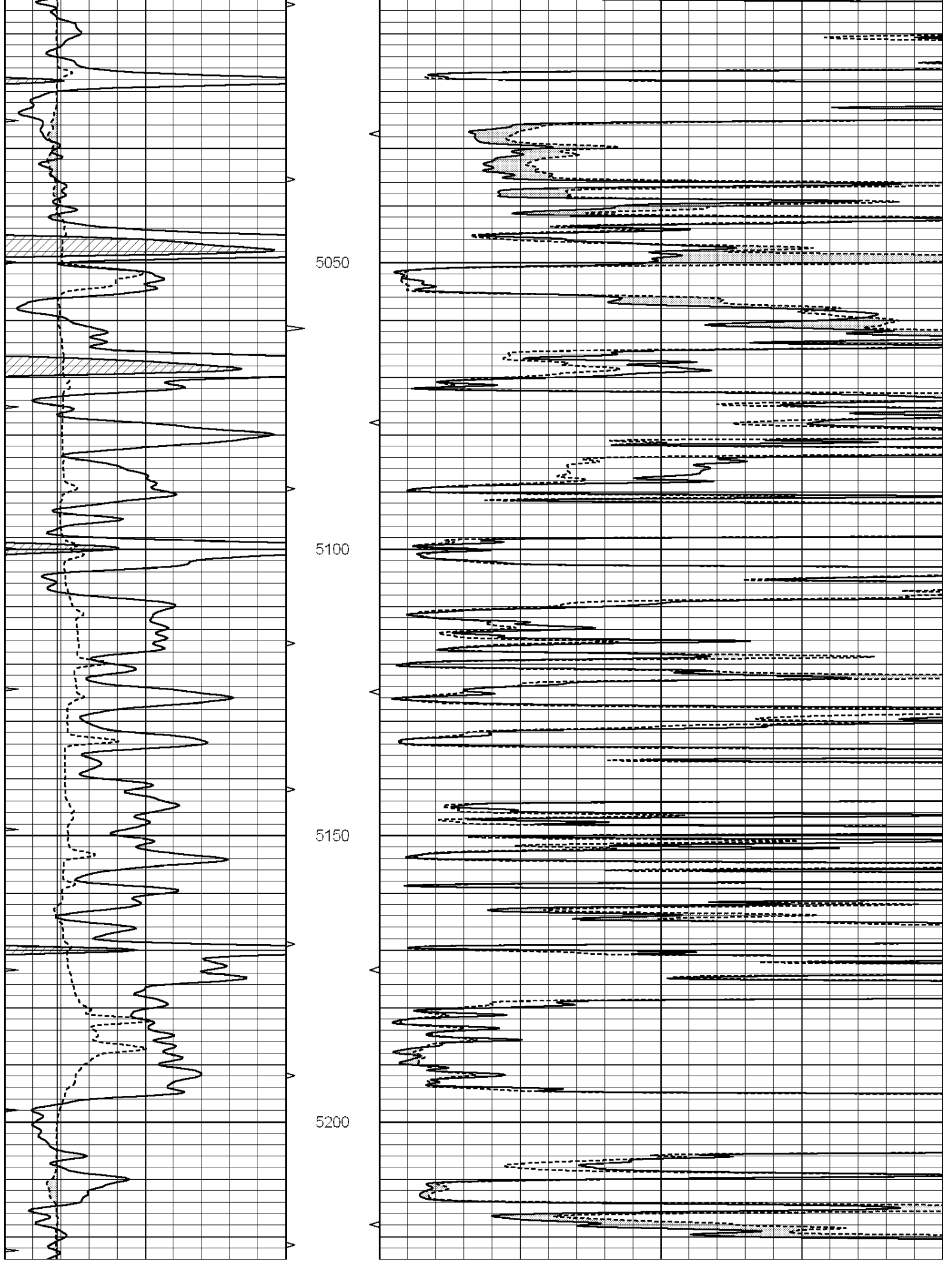
4650

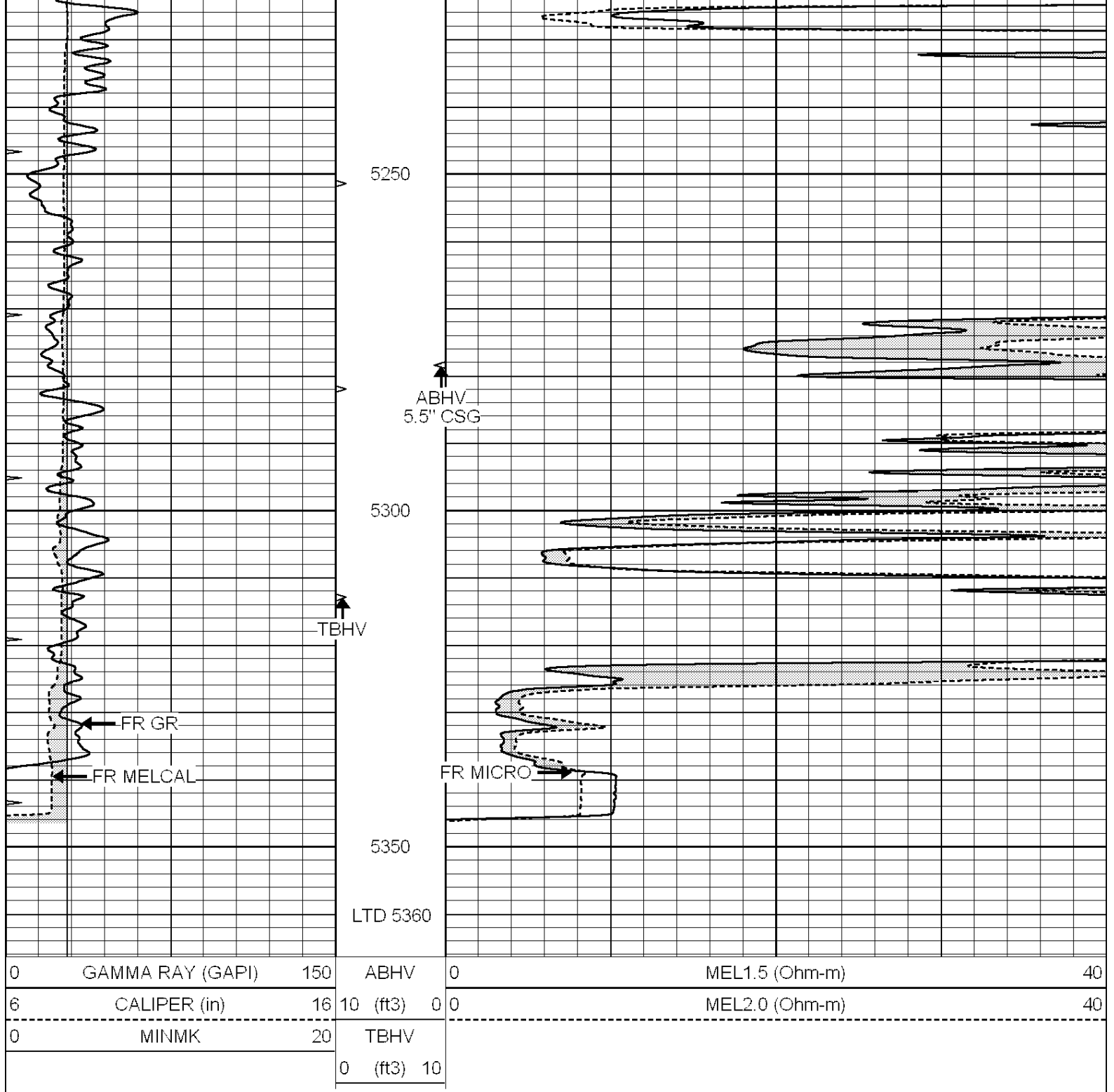
4700

4750







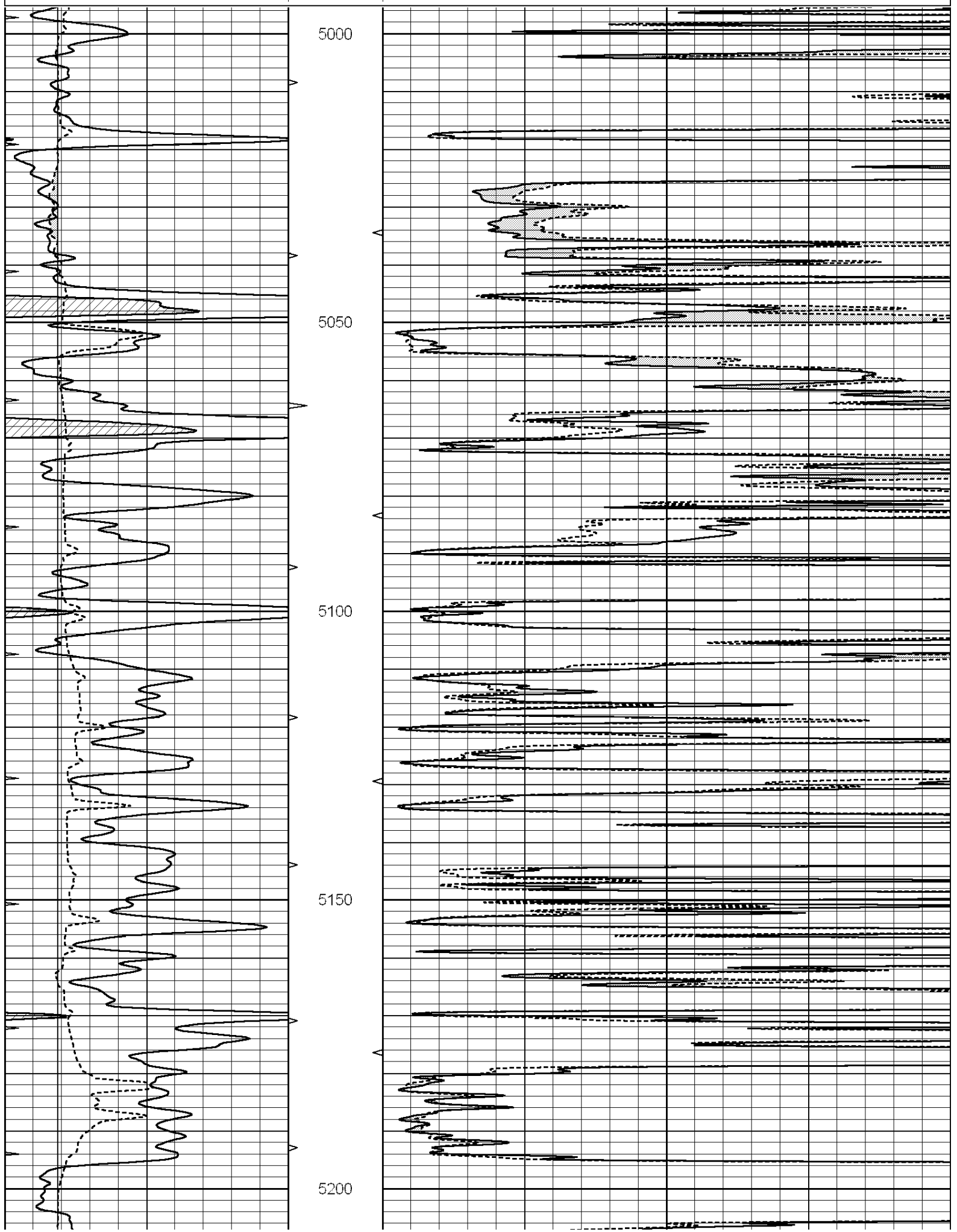


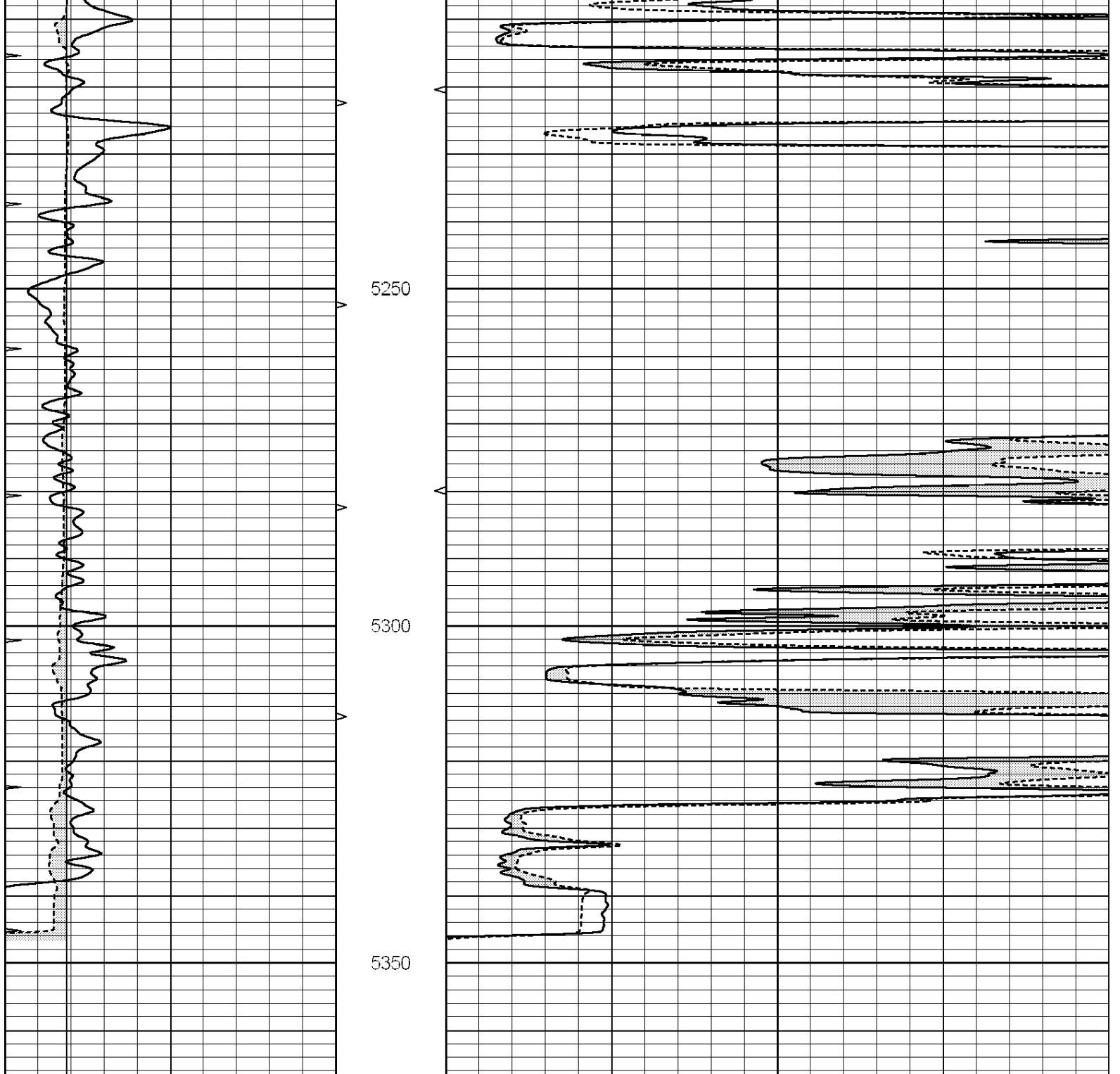
REPEAT SECTION

Database File: 010738pe.db
 Dataset Pathname: pass6.2
 Presentation Format: _micro
 Dataset Creation: Sun Apr 14 23:46:29 2013 by Calc SOC 120430
 Charted by: Depth in Feet scaled 1:240

0	GAMMA RAY (GAPI)	150	ABHV	0	MEL1.5 (Ohm-m)	40
6	CALIPER (in)	16	10 (ft3)	0 0	MEL2.0 (Ohm-m)	40
0	MINMK	20	TBHV			

0 (ft3) 10





0	GAMMA RAY (GAPI)	150	ABHV	0	MEL1.5 (Ohm-m)	40
6	CALIPER (in)	16	10 (ft3)	0	MEL2.0 (Ohm-m)	40
0	MINMK	20	TBHV			
			0 (ft3)	10		

Calibration Report

Database File: 010738pe.db
 Dataset Pathname: pass7.3
 Dataset Creation: Mon Apr 15 00:28:09 2013 by Calc SOC 120430

MICRO Calibration Report

Serial Number: 2
 Tool Model: PROBE
 Performed: Sun Apr 14 22:29:29 2013

Caliper Calibration:	Gain=5.622	Offset=-2.533
References	Low Cal 8.500	High Cal 16.000
Readings	1.731	3.065
1.5" Calibration:	Gain=48.000	Offset=-1.500
References	Low Cal 0.000	High Cal 20.000
Readings	0.015	0.458
2" Calibration:	Gain=46.000	Offset=-0.200
References	Low Cal 0.000	High Cal 20.000
Readings	0.003	0.384
Gamma Ray Calibration Report		
Serial Number:	GR4	
Tool Model:	OPEN	
Performed:	Thu Apr 11 05:00:50 2013	
Calibrator Value:	200.0	GAPI
Background Reading:	0.0	cps
Calibrator Reading:	189.0	cps
Sensitivity:	2.7000	GAPI/cps