



**COMPLETION
& PRODUCTION
SERVICES CO.**

**SONIC
LOG**

Company VINCENT OIL CORPORATION
Well KELLER NO. 1-27
Field WILDCAT
County FORD
State KANSAS

Company VINCENT OIL CORPORATION
Well KELLER NO. 1-27
Field WILDCAT
County FORD State KANSAS

Location: API # : 15-057-20879-00-00
SEC 27 TWP 28S RGE 23W
SW - SE - NE - NE
1210' FNL & 375' FEL
Permanent Datum GROUND LEVEL Elevation 2468
Log Measured From KELLY BUSHING 12' A.G.L.
Drilling Measured From KELLY BUSHING
Other Services
CNL/CDL/PE
DIL/MEL
Elevation
K.B. 2480
D.F. 2478
G.L. 2468

Date	03/17/2013
Run Number	TWO
Depth Driller	5320
Depth Logger	5320
Bottom Logged Interval	5306
Top Log Interval	600
Casing Driller	8 5/8" @ 609'
Casing Logger	604
Bit Size	7 7/8"
Type Fluid in Hole	CHEMICAL MUD
Density / Viscosity	9.2 / 52
pH / Fluid Loss	10.0 / 9.2
Source of Sample	FLOWLINE
Rim @ Meas. Temp	.54 @ 80 F
Rmt @ Meas. Temp	.432 @ 80 F
Rmc @ Meas. Temp	.648 @ 80 F
Source of Rmf / Rmc	MEASUREMENT
Rim @ BHT	.337 @ 128 F
Time Circulation Stopped	2 HOURS
Time Logger on Bottom	3:30 A.M.
Maximum Recorded Temperature	128 F
Equipment Number	4854
Location	HAYS, KANSAS
Recorded By	MIKE GARRISON
Witnessed By	JIM HALL

<<< Fold Here >>>

All interpretations are opinions based on inferences from electrical or other measurements and we cannot and do not guarantee the accuracy or correctness of any interpretation, and we shall not, except in the case of gross or willful negligence on our part, be liable or responsible for any loss, costs, damages, or expenses incurred or sustained by anyone resulting from any interpretation made by any of our officers, agents or employees. These interpretations are also subject to our general terms and conditions set out in our current Price Schedule.

Comments

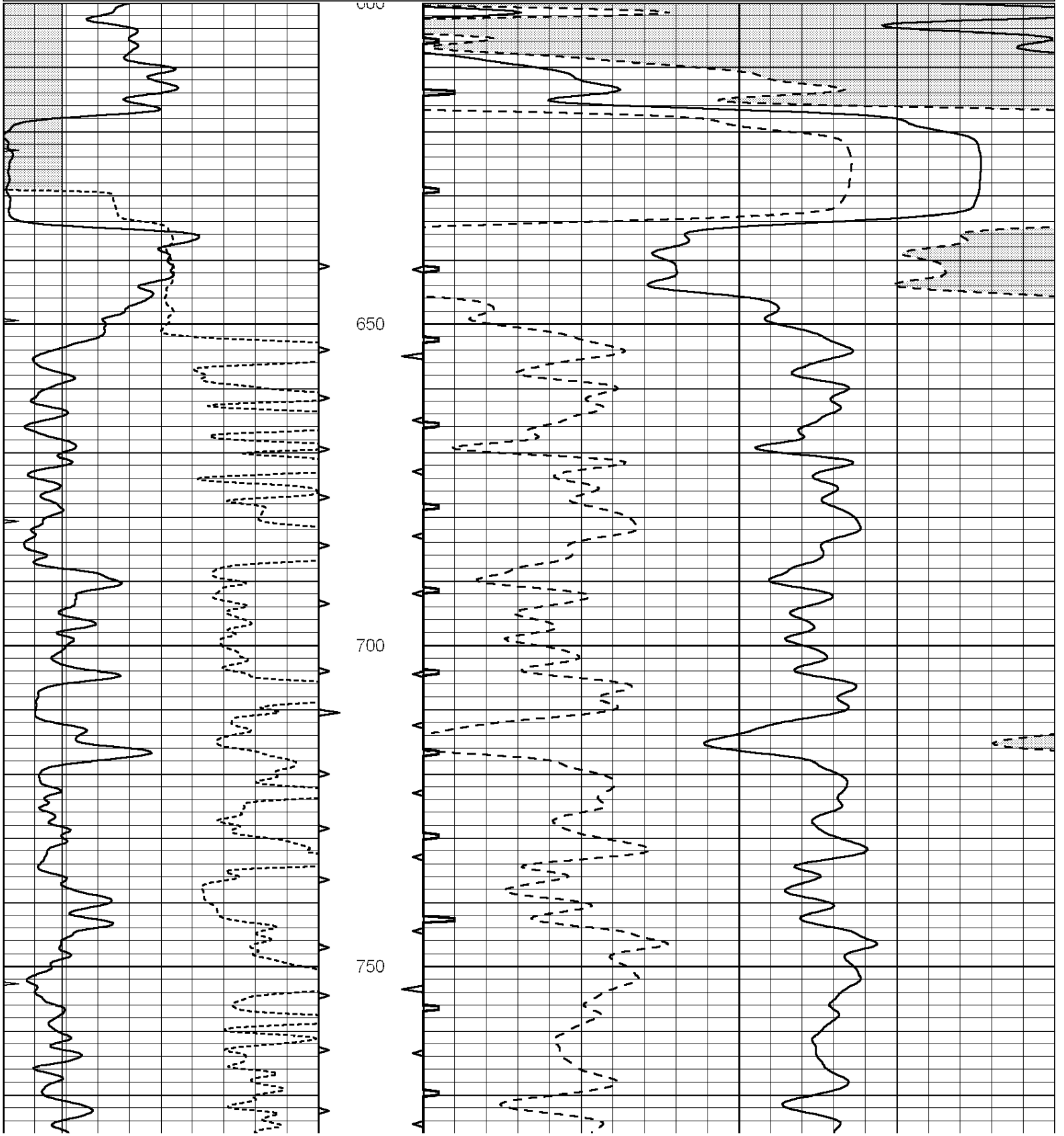
THANK YOU FOR USING "NABORS" HAYS, KANSAS (785) 628-6395
DIRECTIONS
FORD, KS- NORTH TO SADDLE RD, WEST ON BLACKTOP TO 123 RD, SOUTH TO DEAD END, .5 WEST,
SOUTH INTO AT TANK BATTERIES

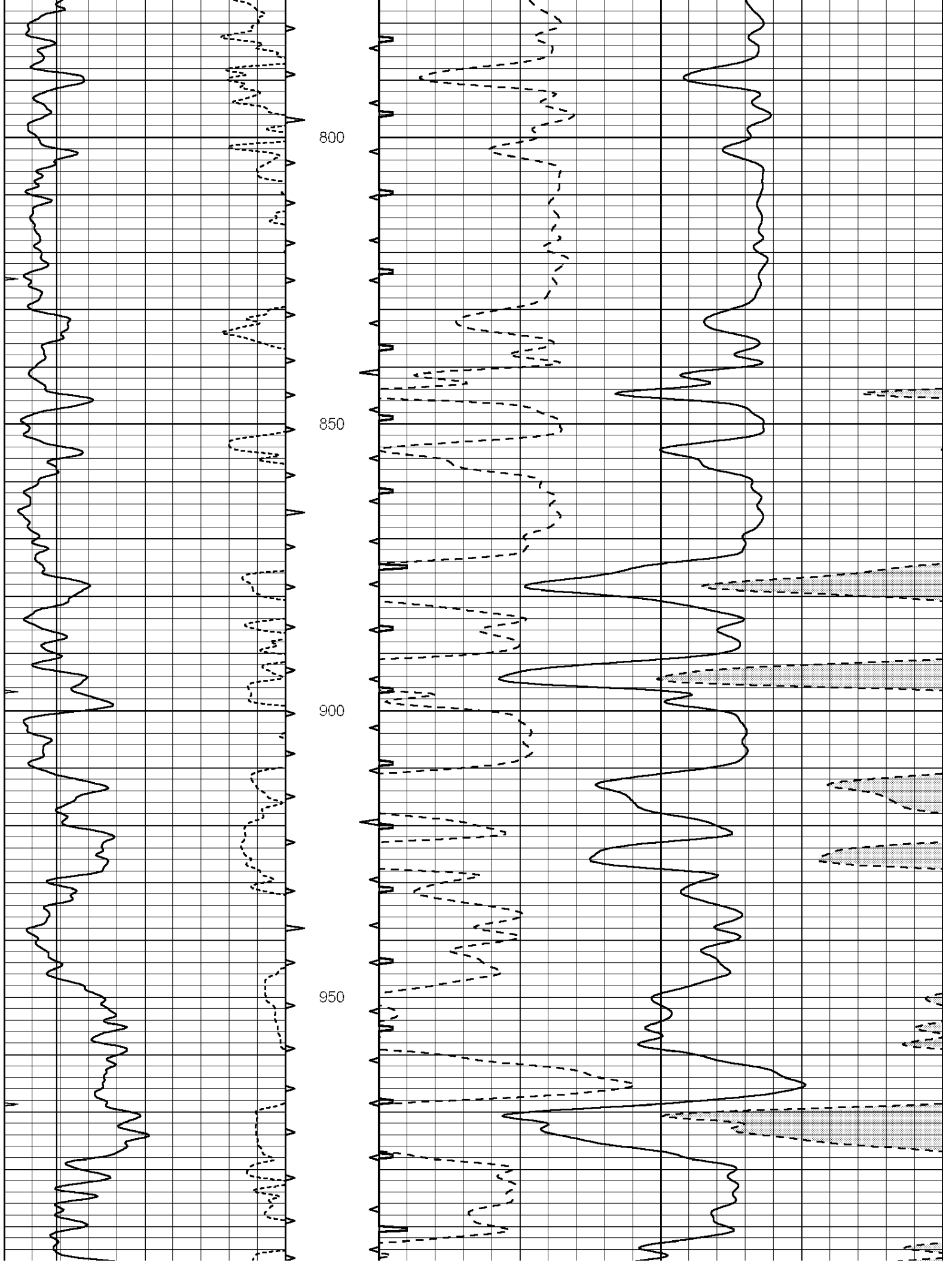


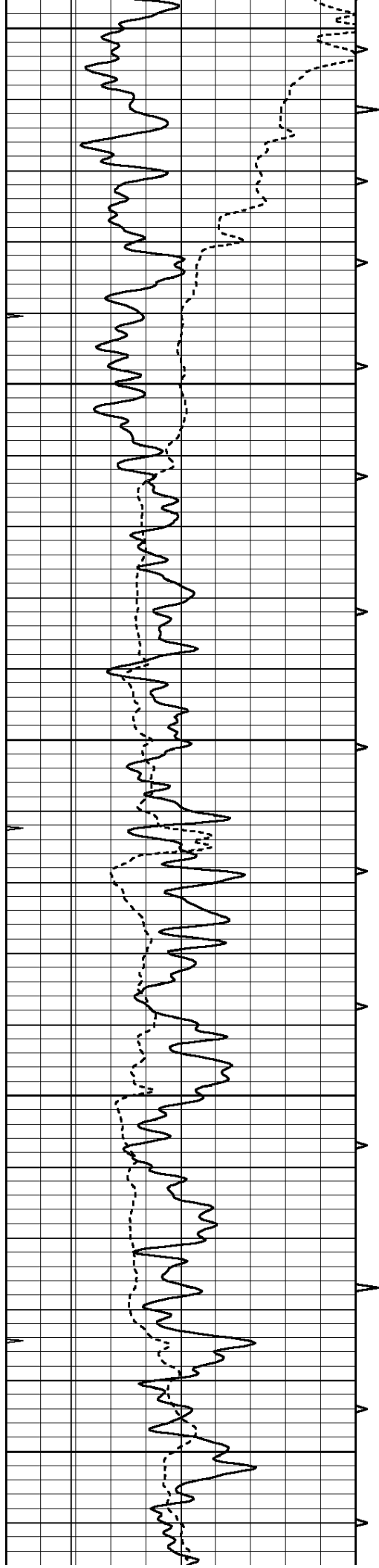
MAIN SECTION

Database File: 010726pe.db
 Dataset Pathname: pass6.8
 Presentation Format: slt
 Dataset Creation: Sun Mar 17 08:13:45 2013 by Calc SOC 120430
 Charted by: Depth in Feet scaled 1:240

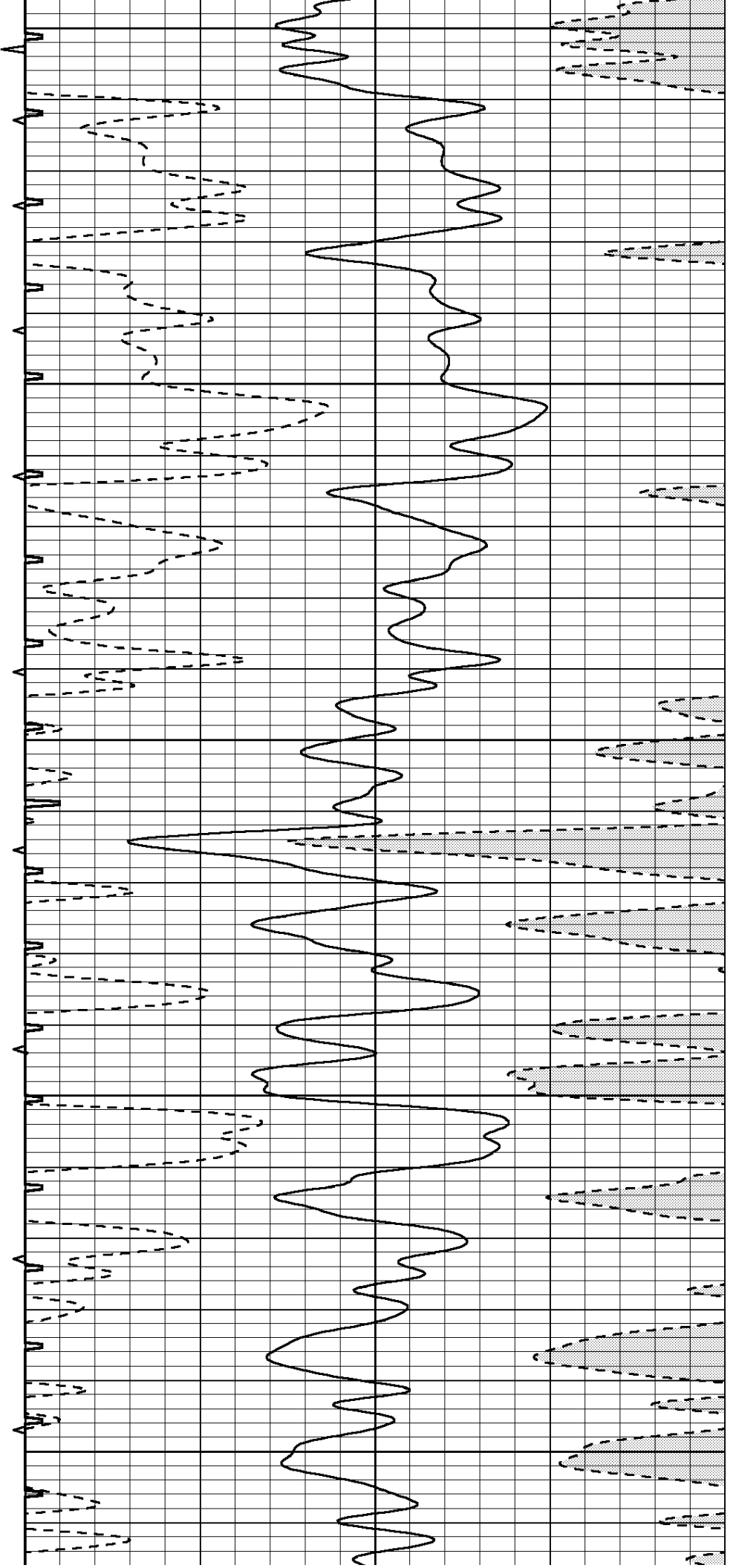
0	GAMMA RAY (GAPI)	150	ABHV	140	DELTA TIME (usec/ft)	40	
6	CALIPER (in)	16	10 (ft3)	0	30	SONIC POROSITY (pu)	-10
0	MINMK	20	TBHV	0	ITT (msec)	20	
			0 (ft3)	10			

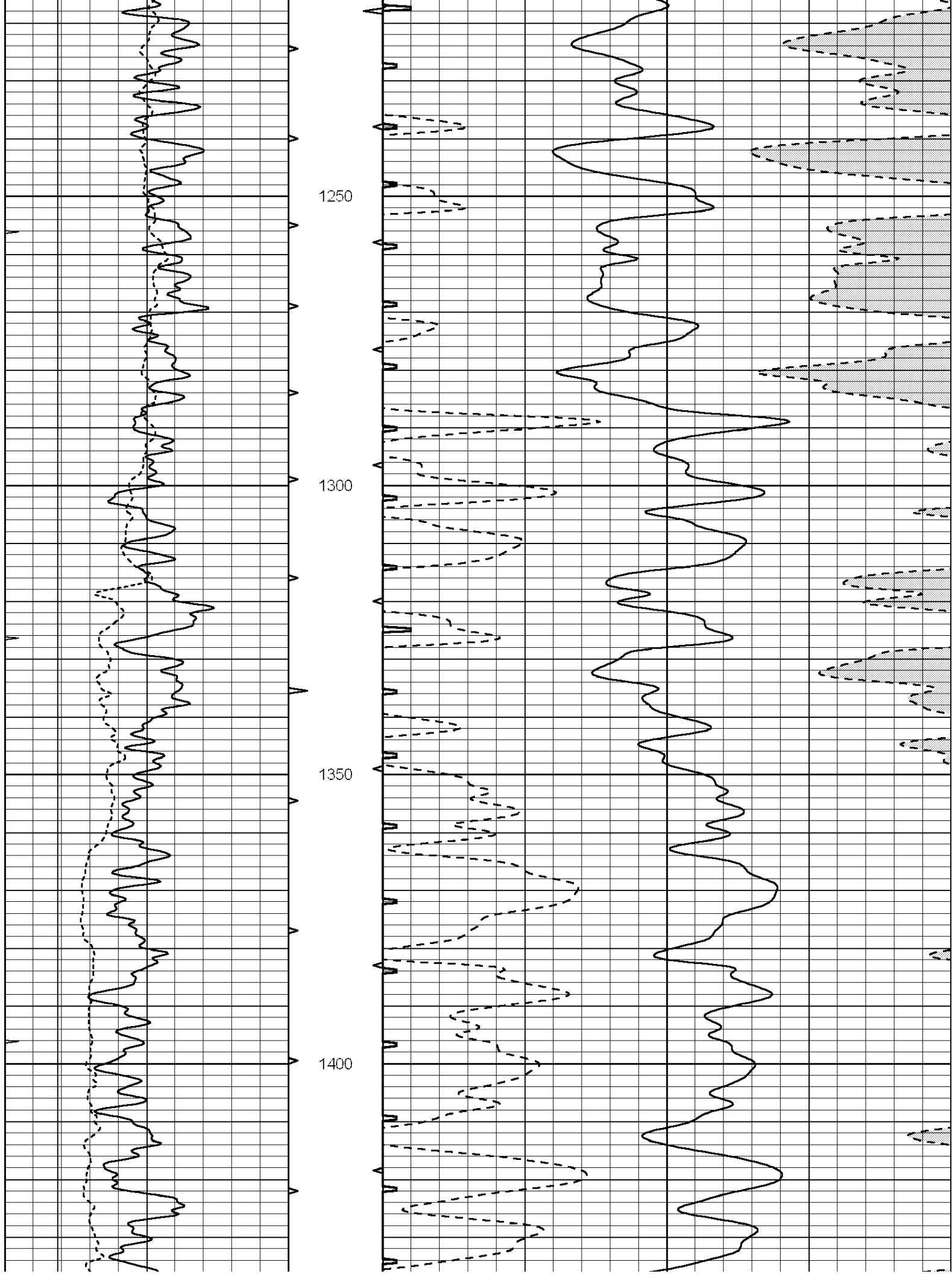


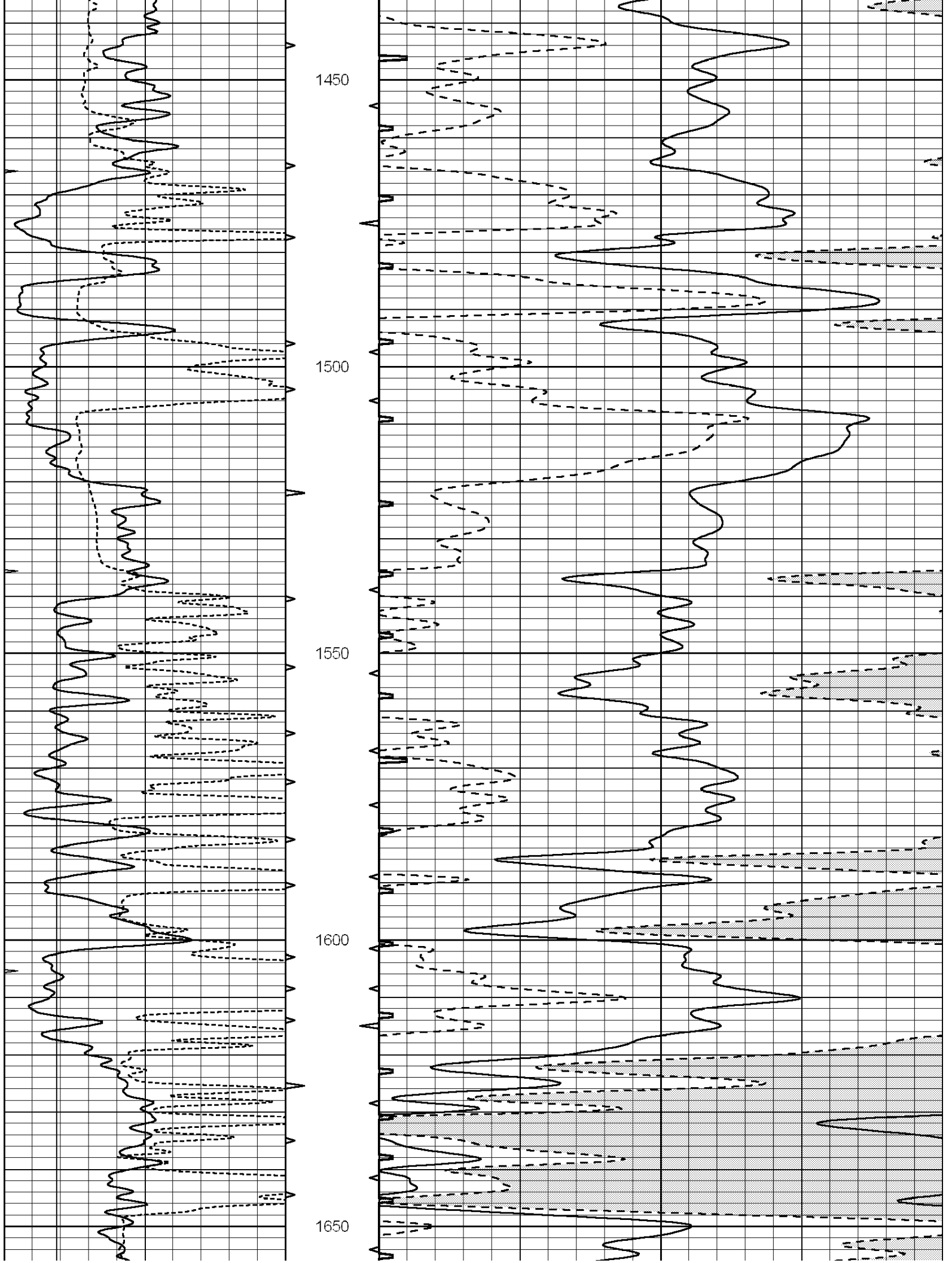


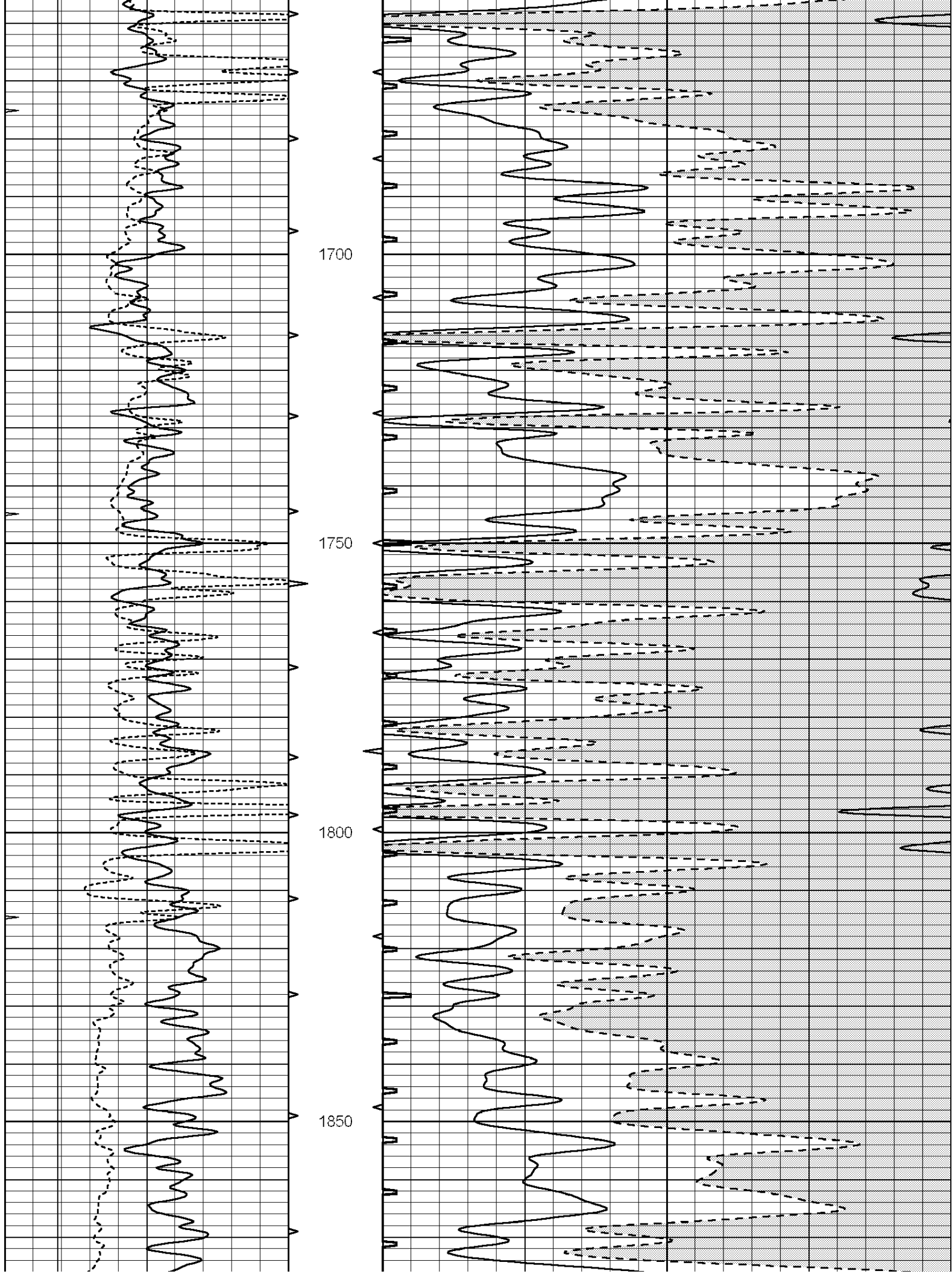


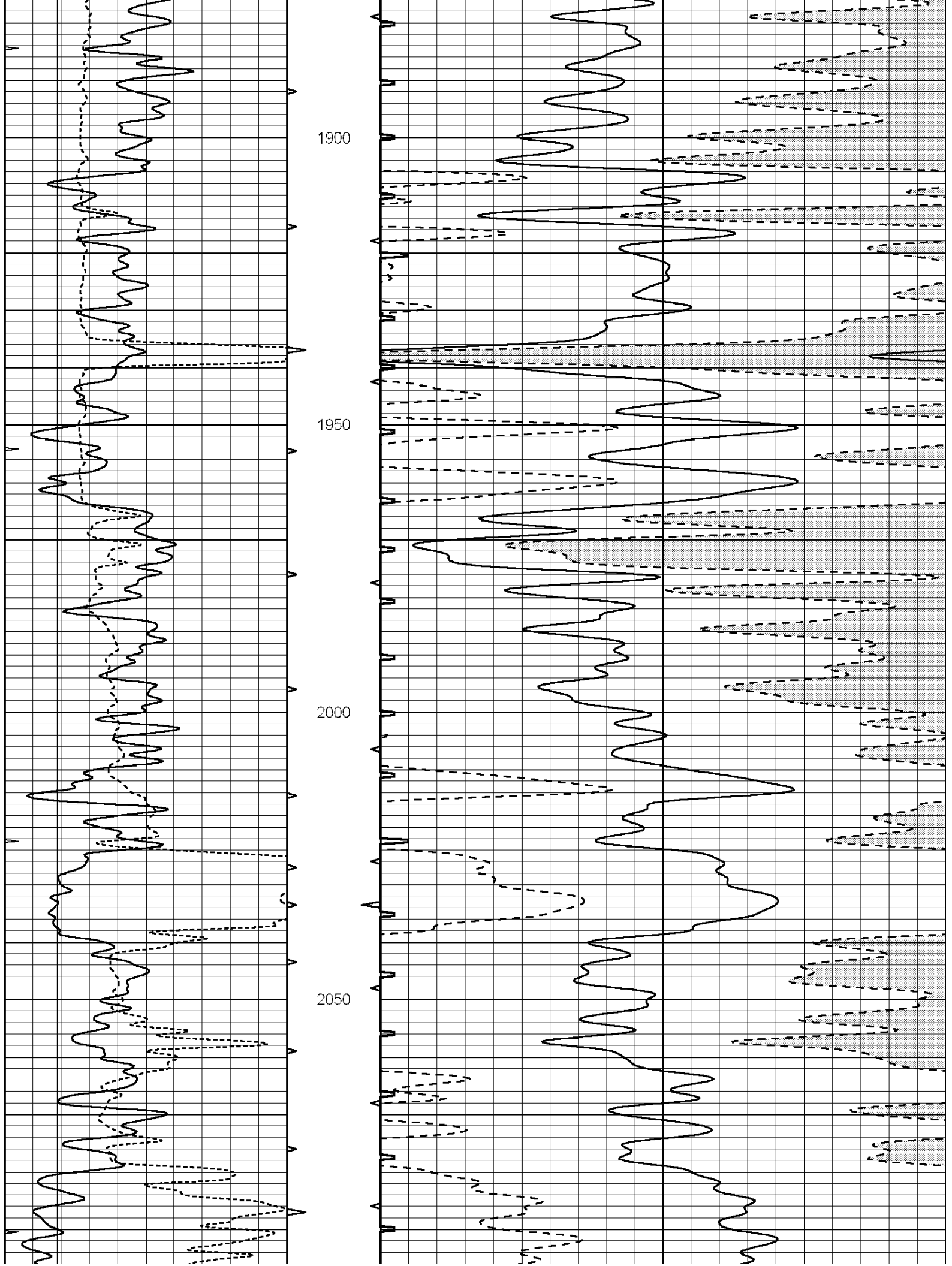
1000
1050
1100
1150
1200

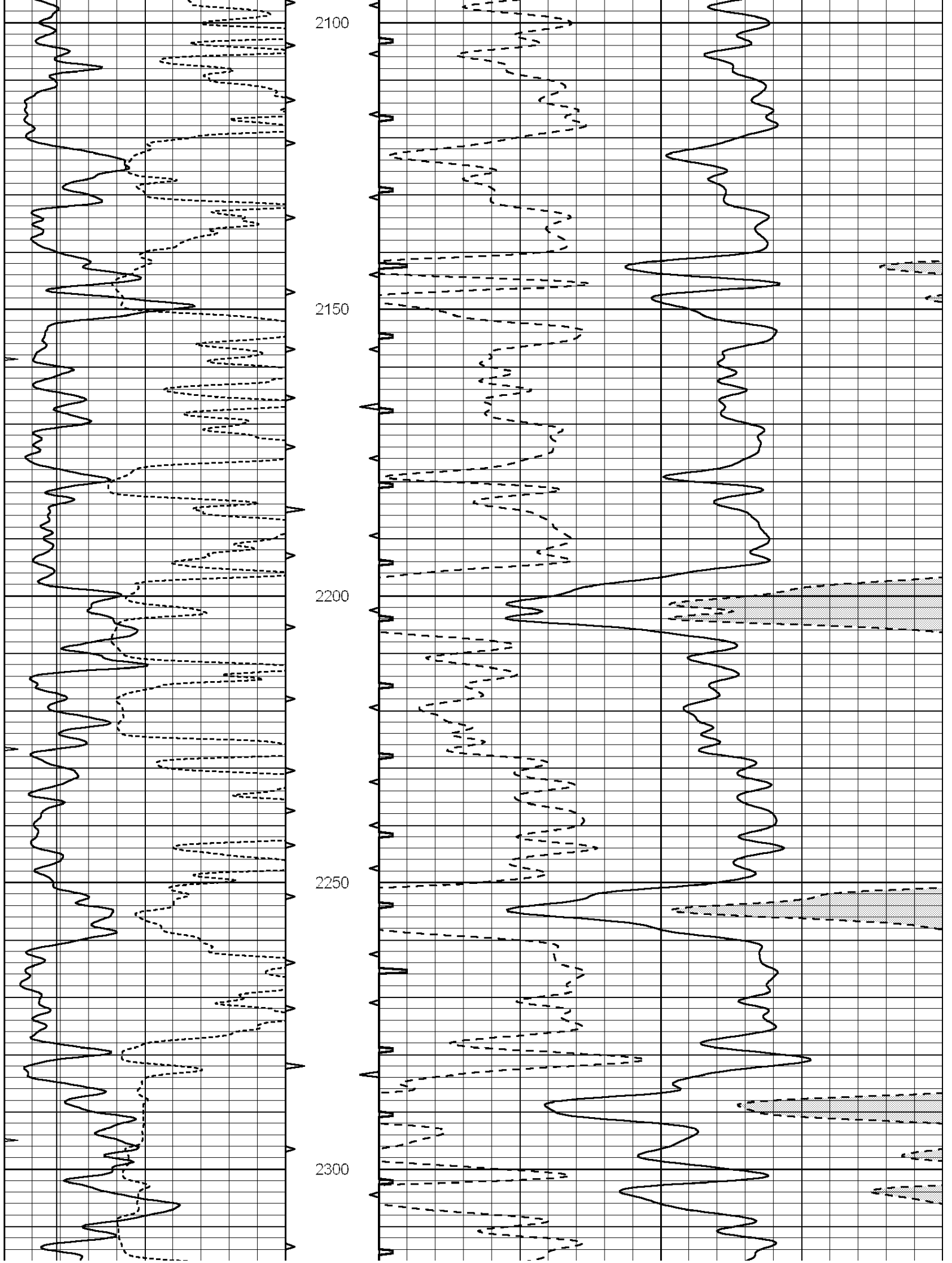


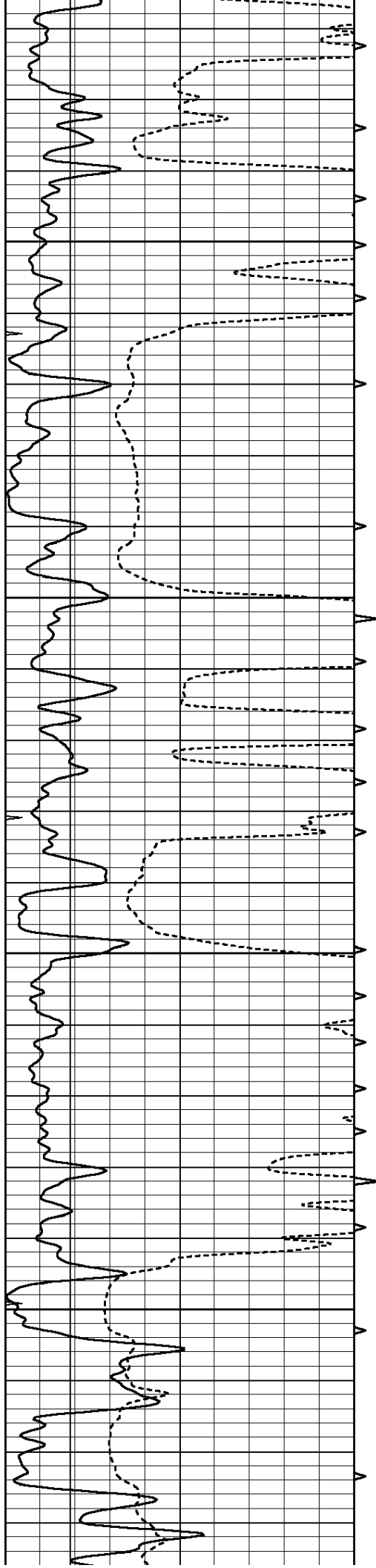










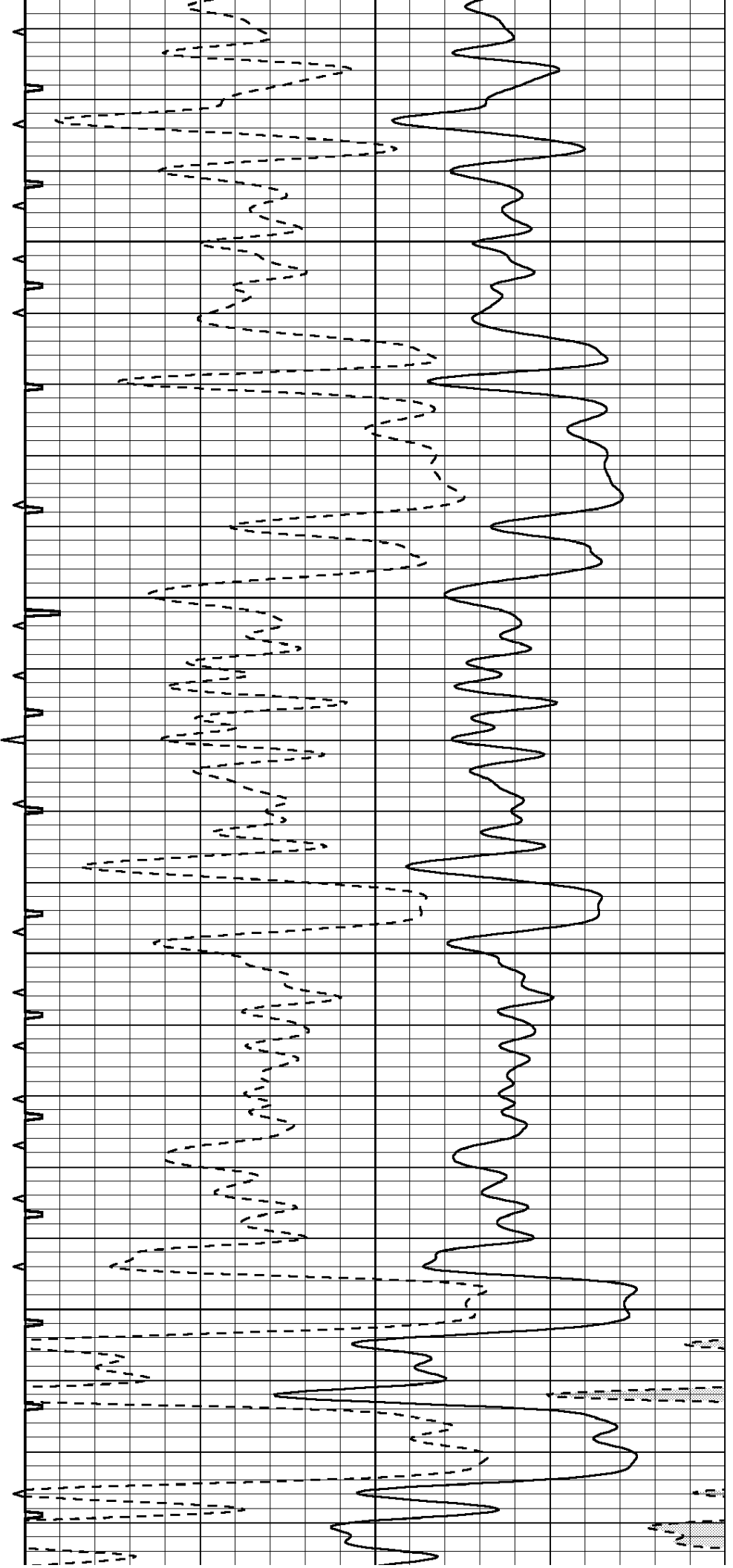


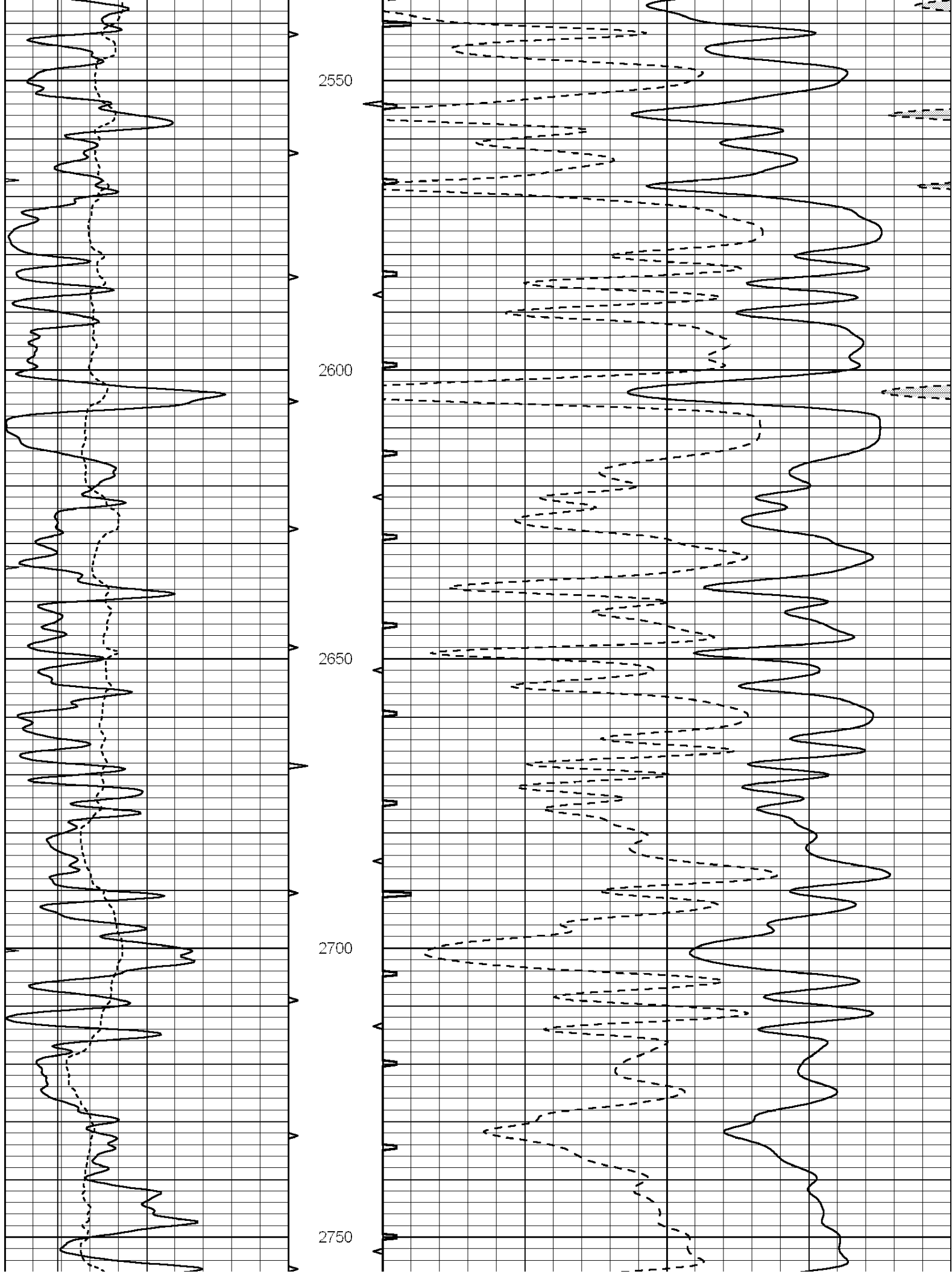
2350

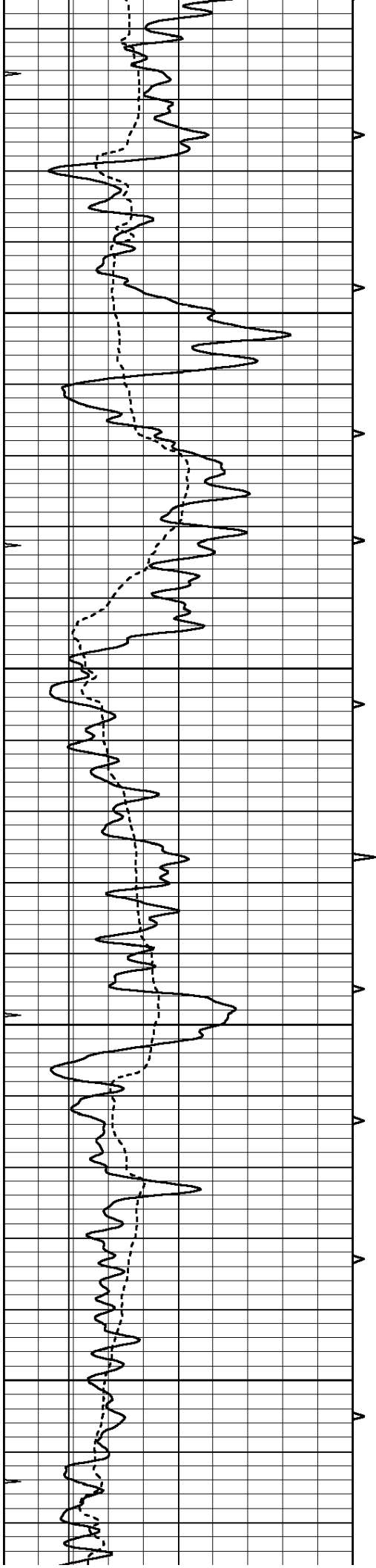
2400

2450

2500





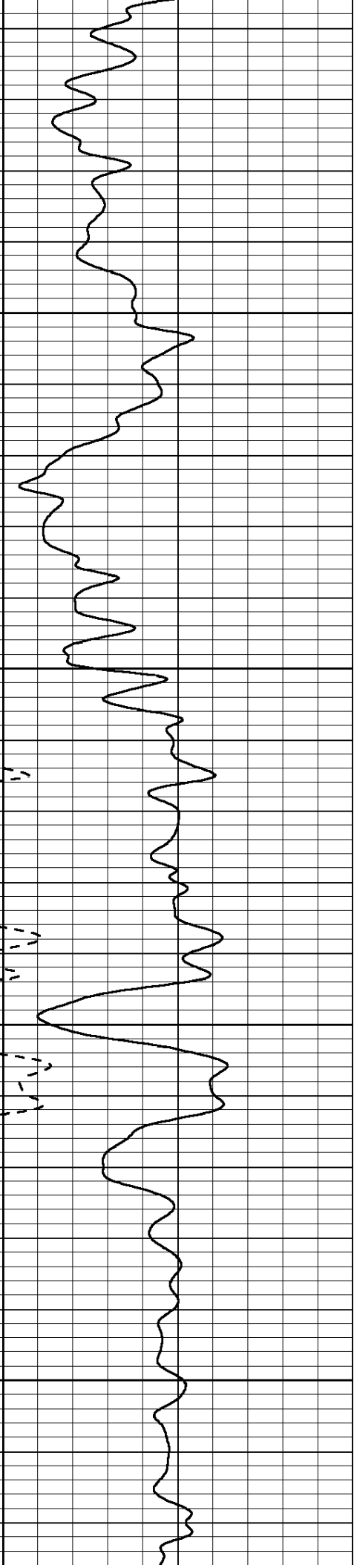
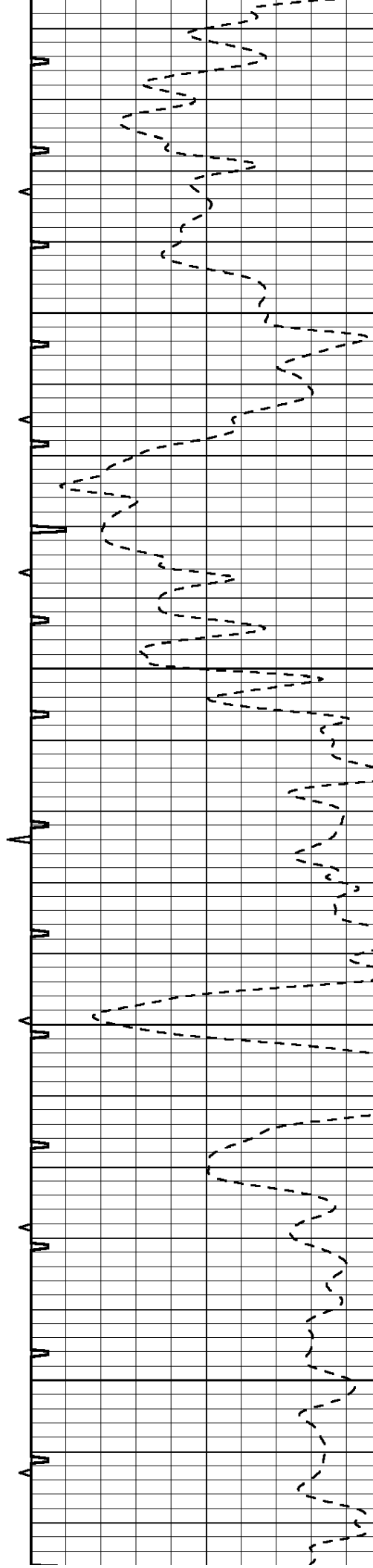


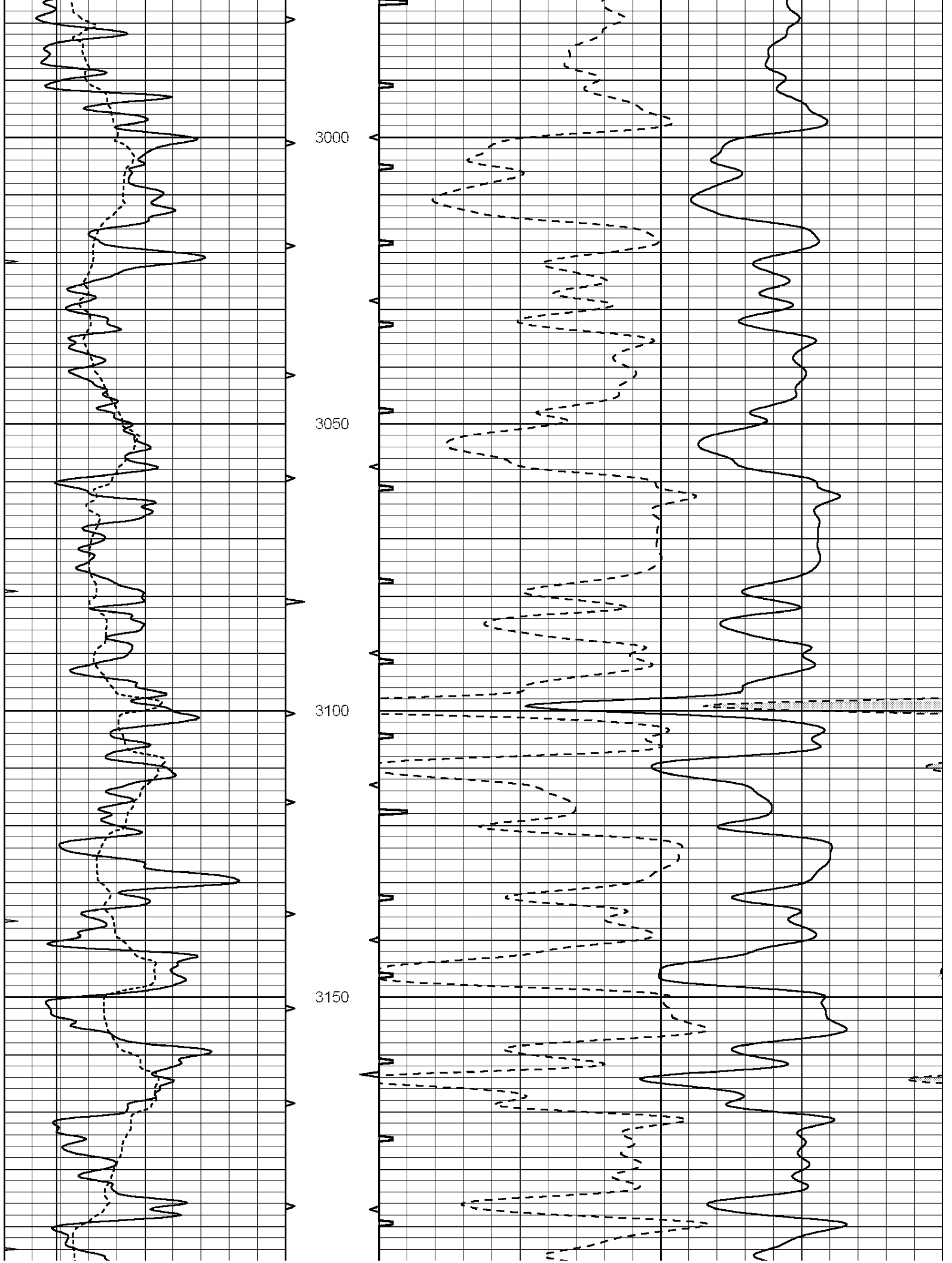
2800

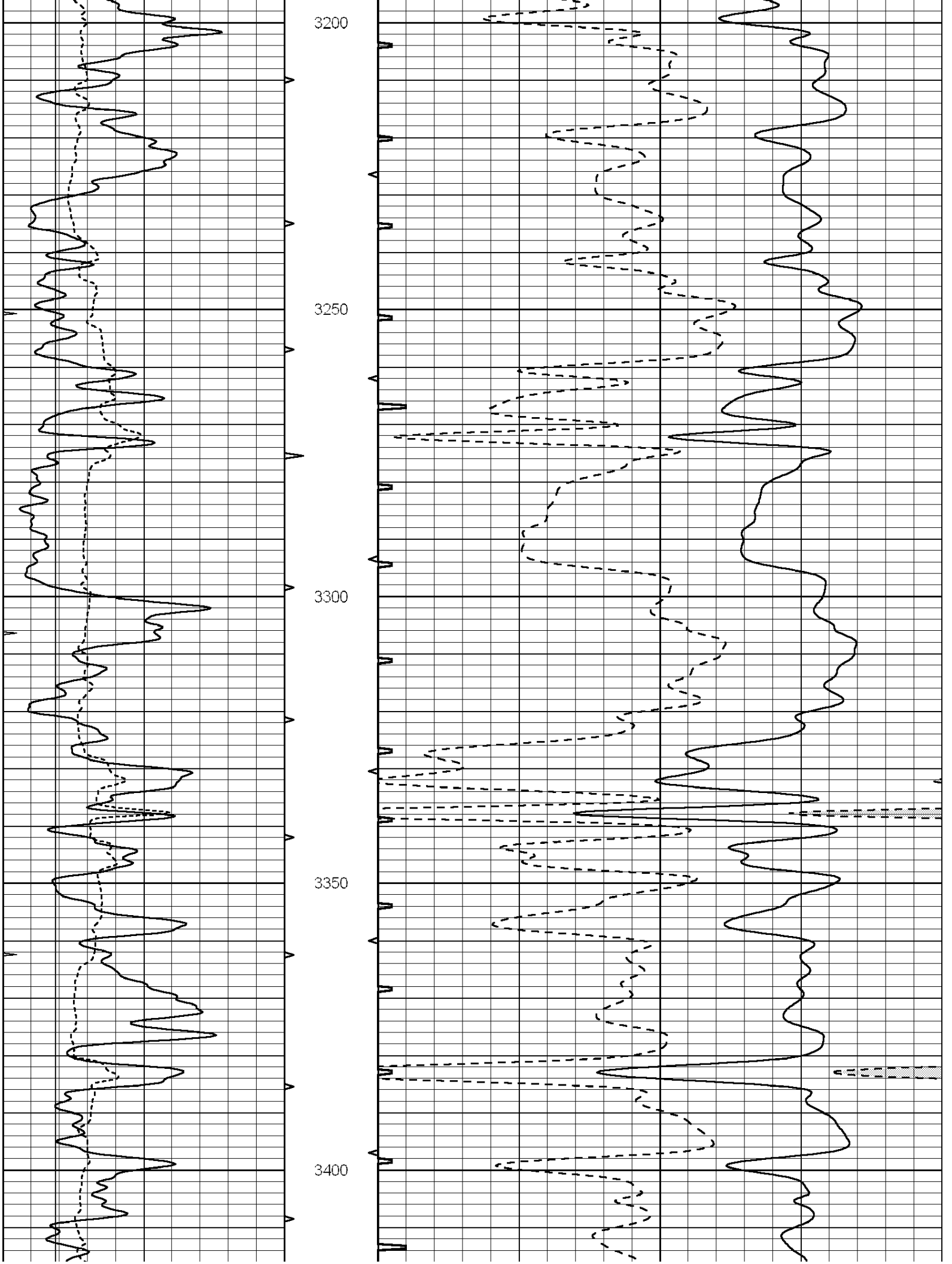
2850

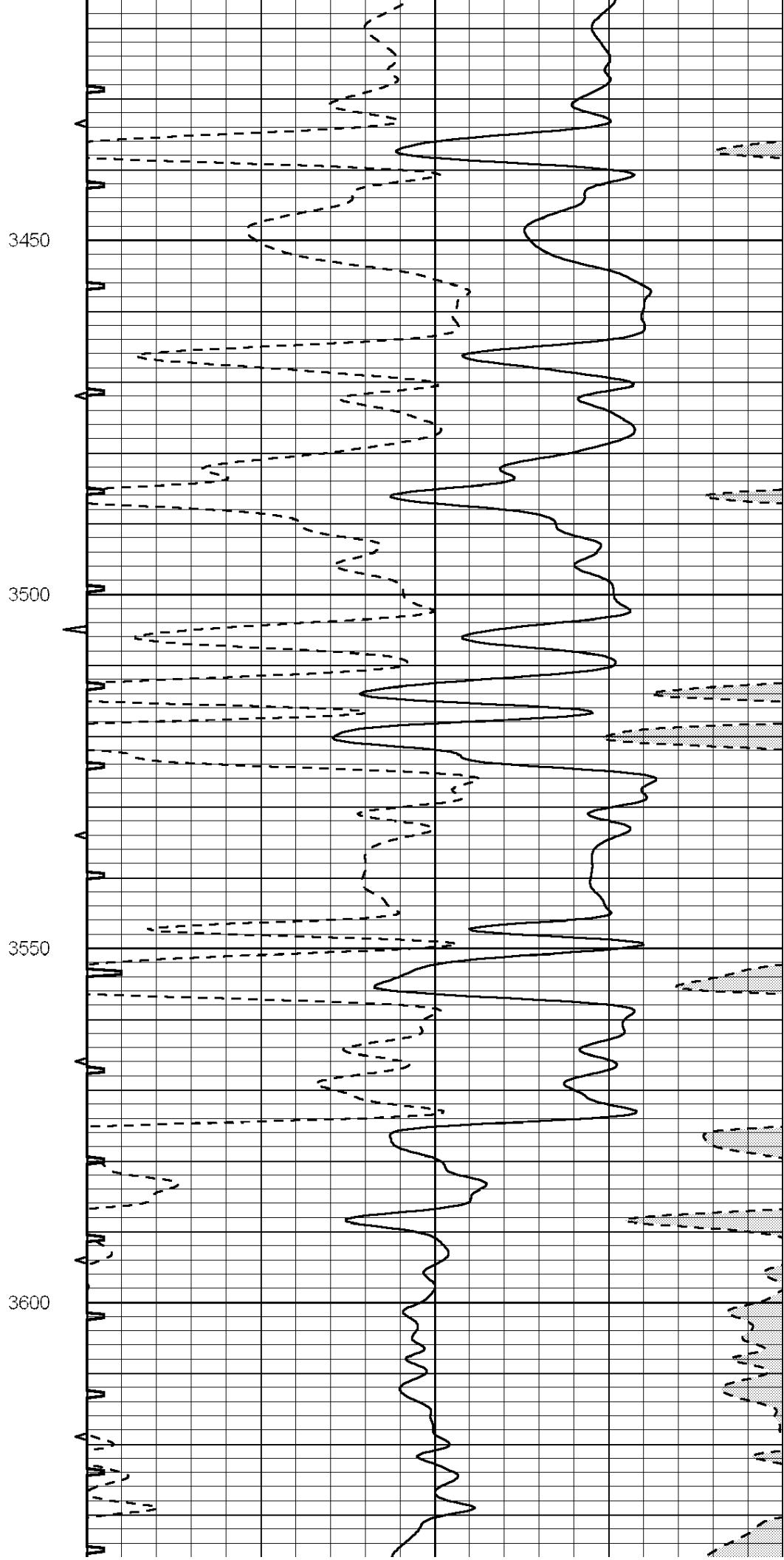
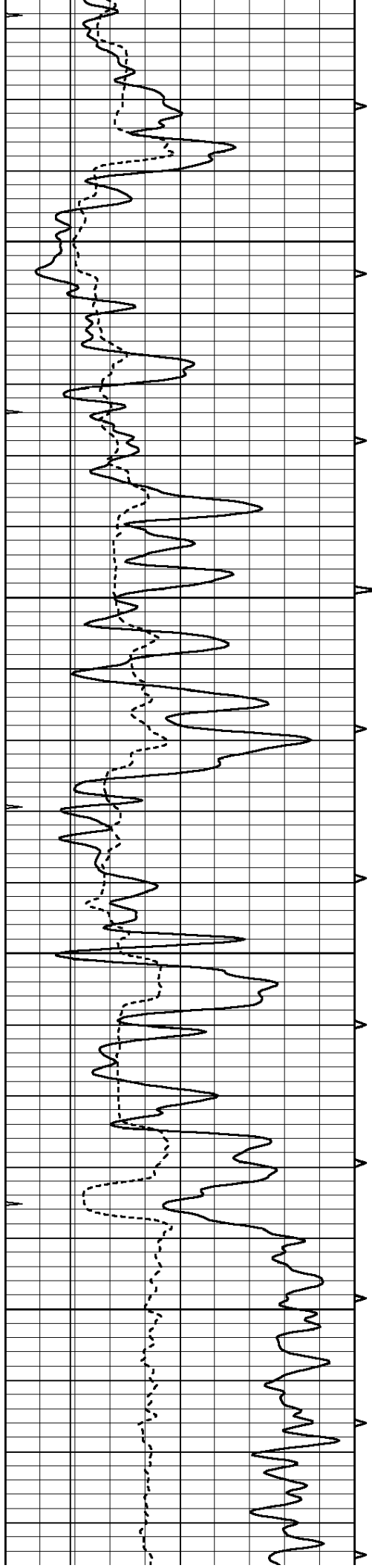
2900

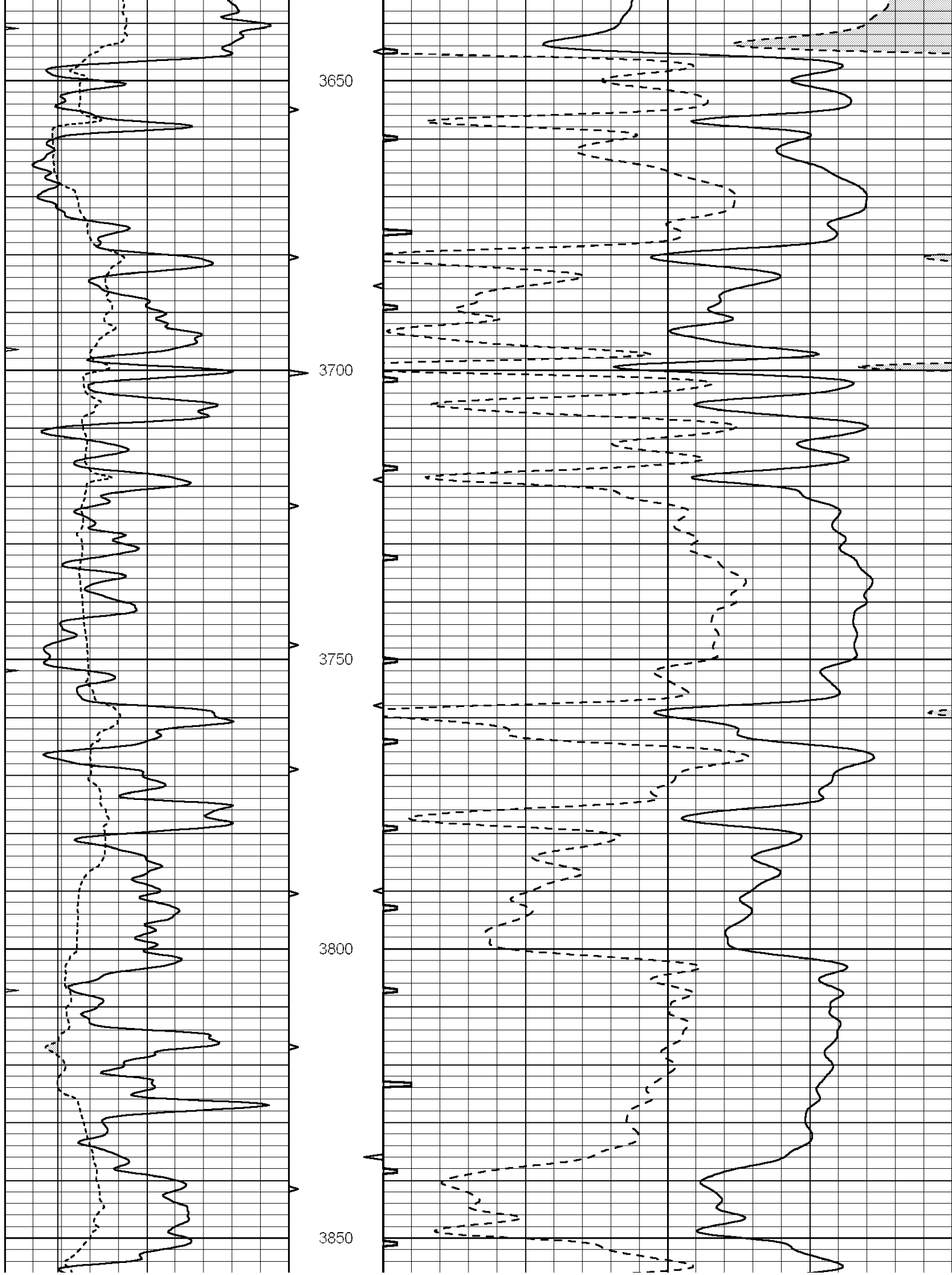
2950

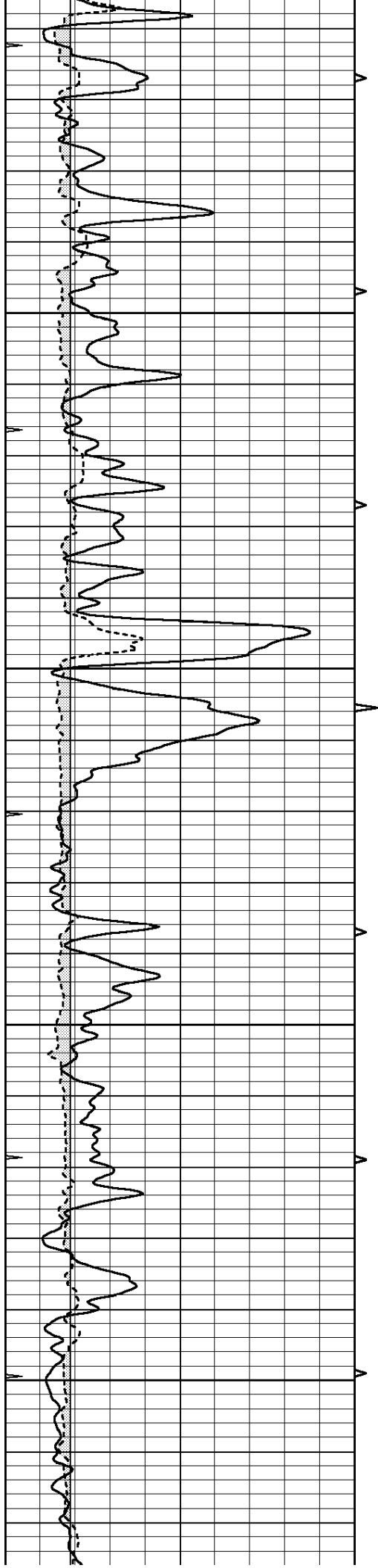










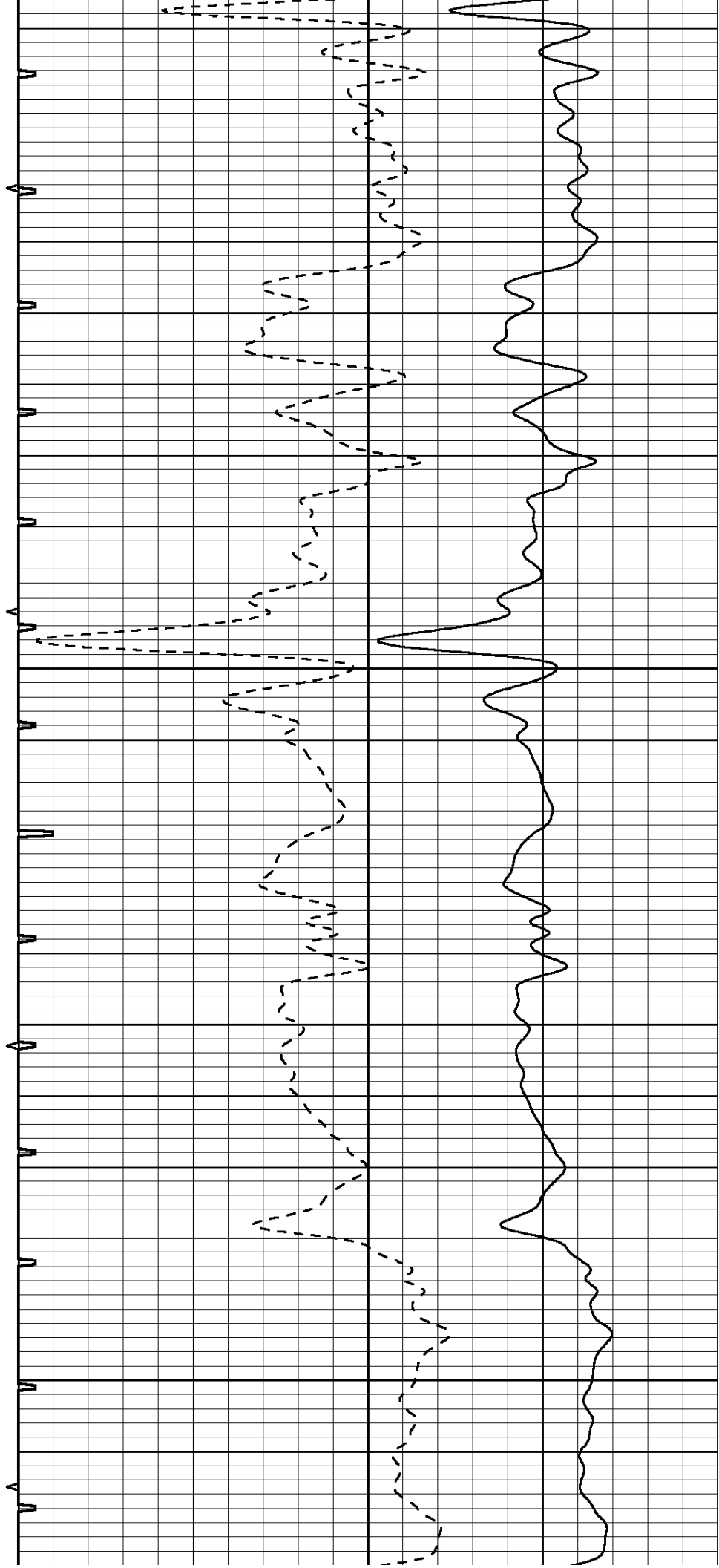


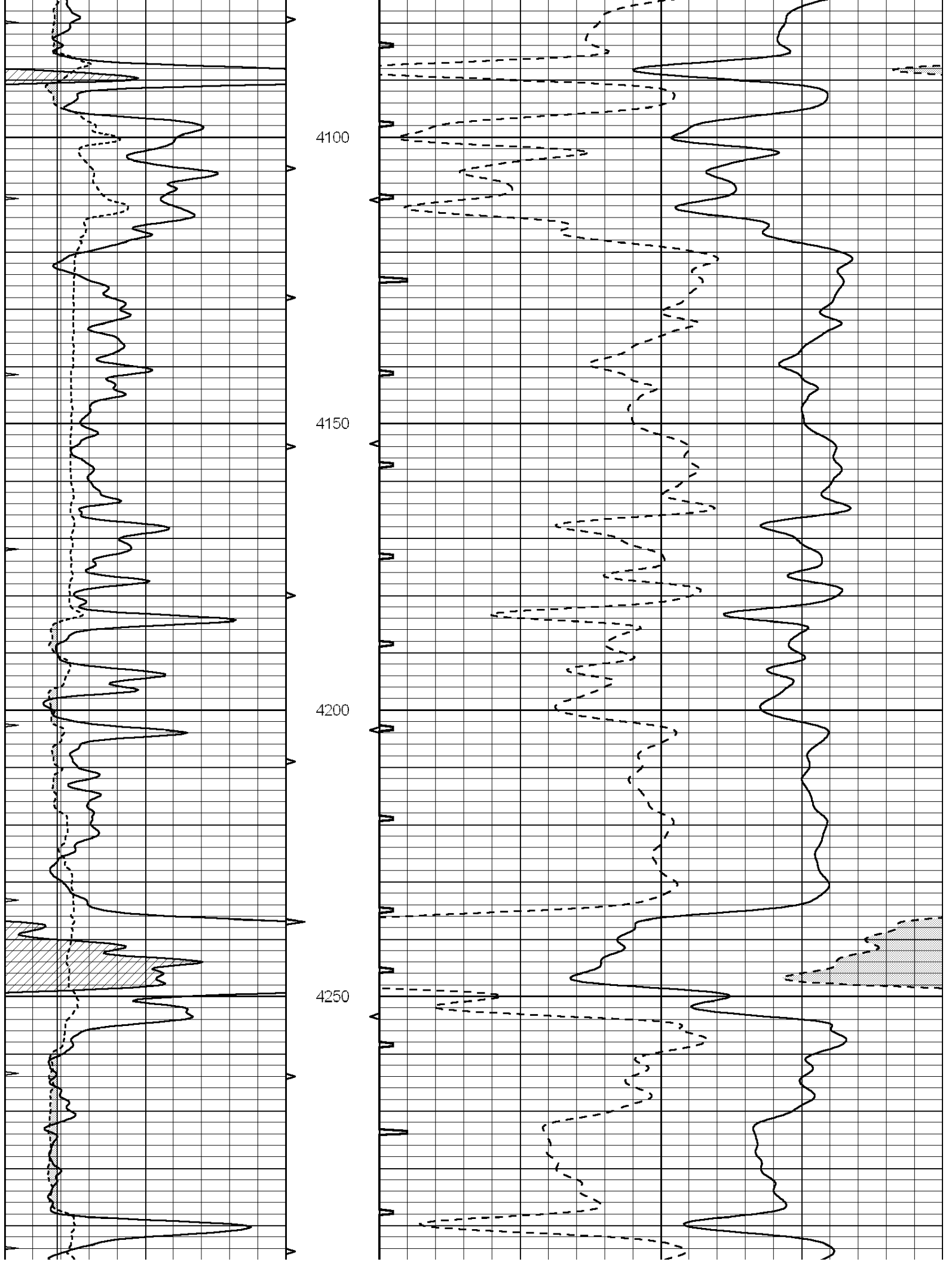
3900

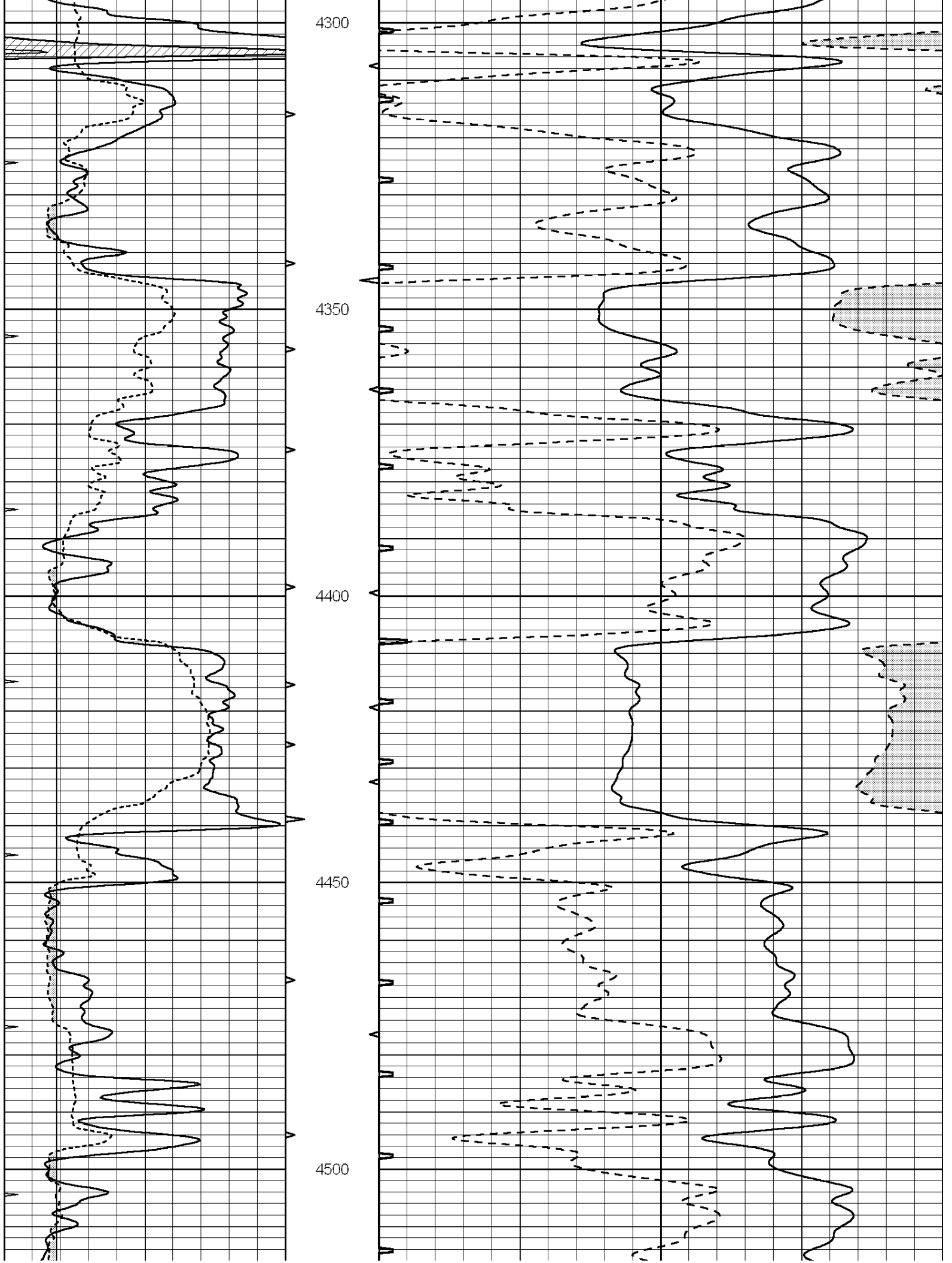
3950

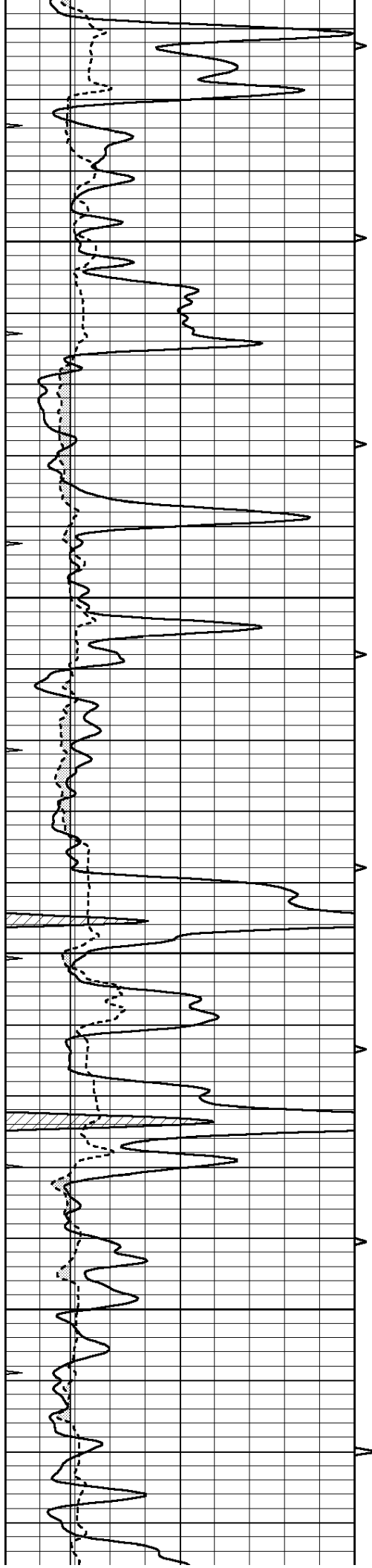
4000

4050







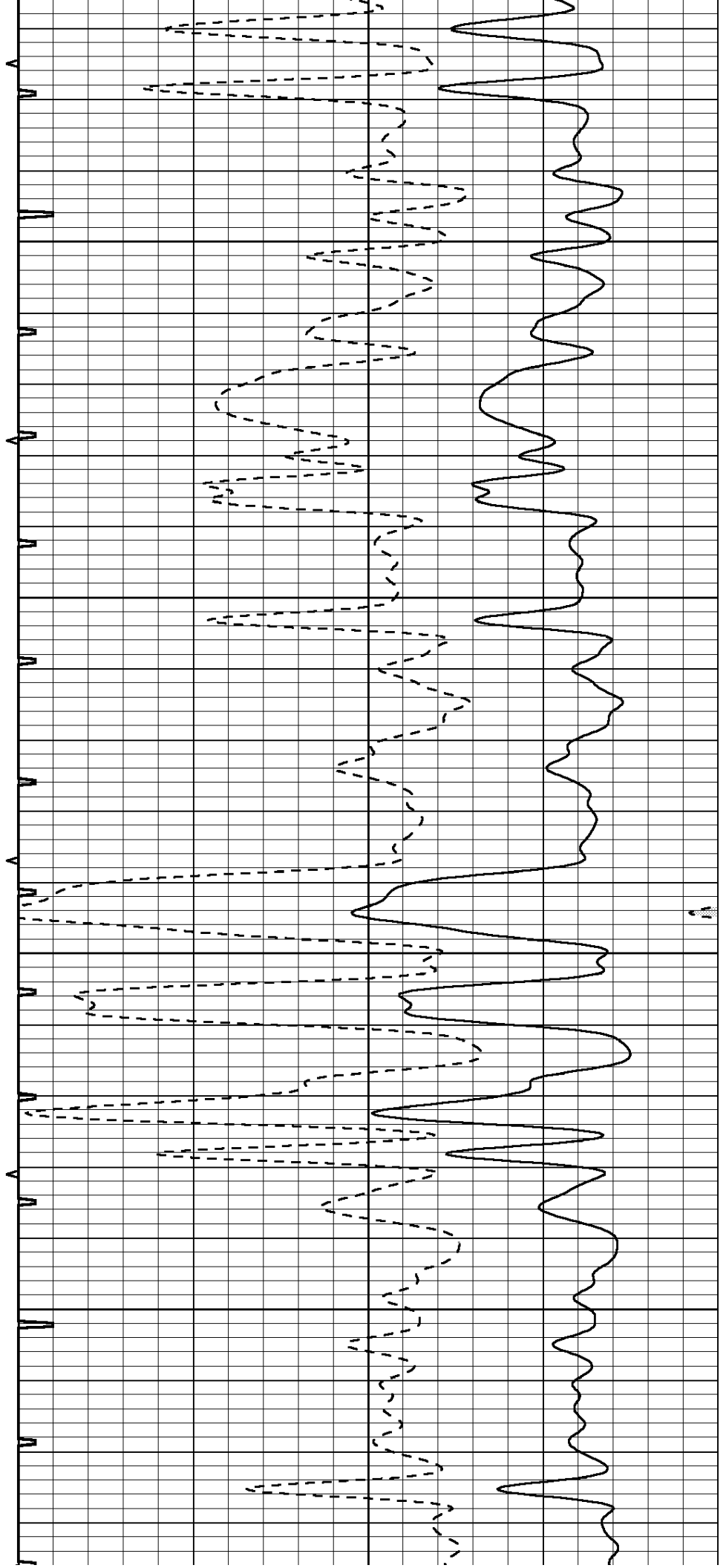


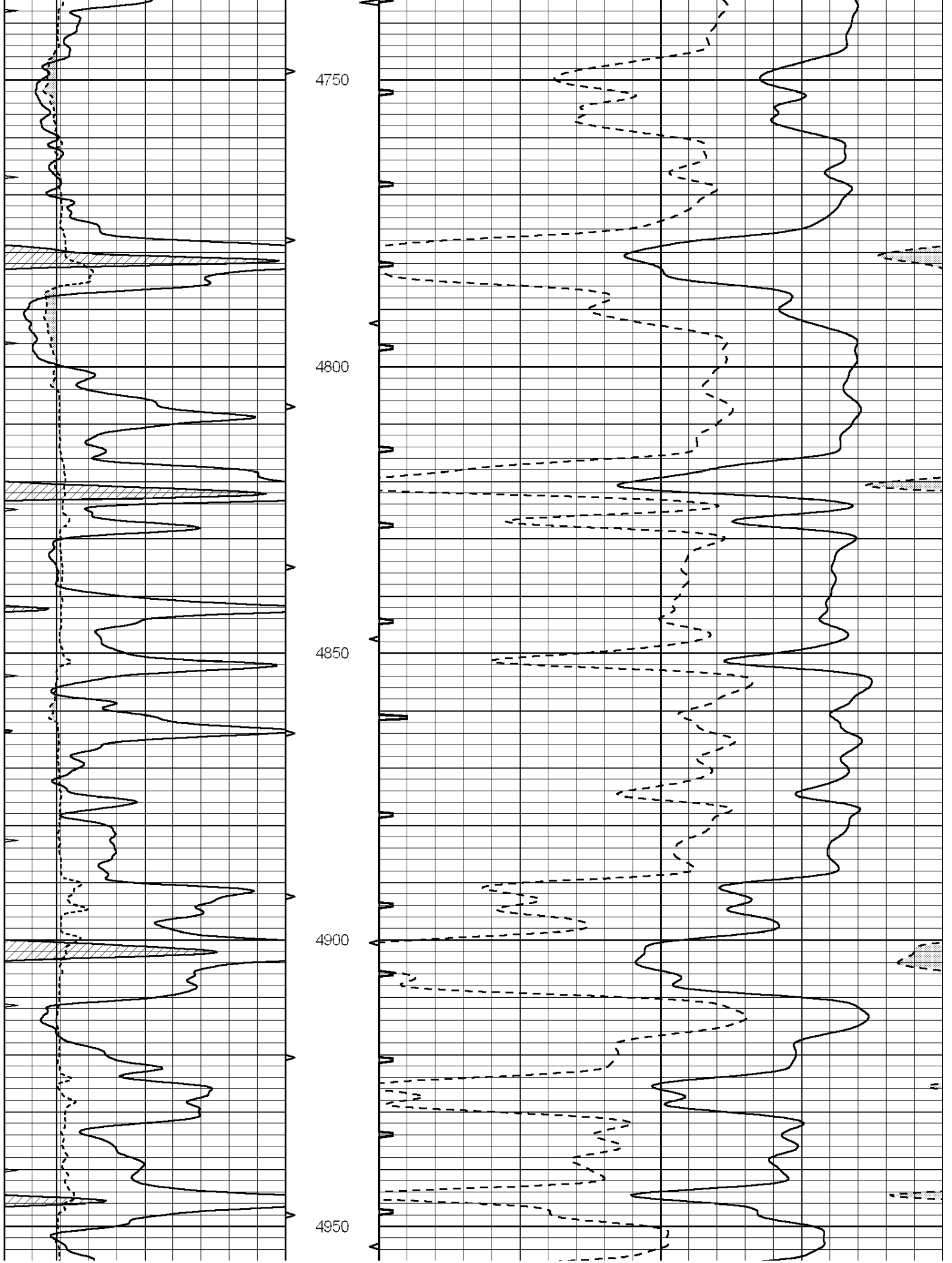
4550

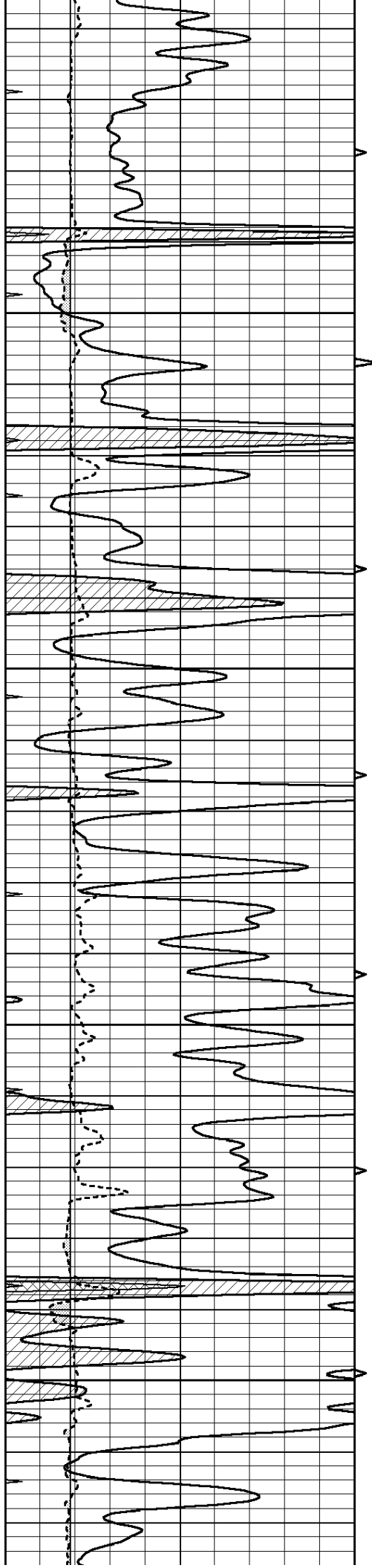
4600

4650

4700





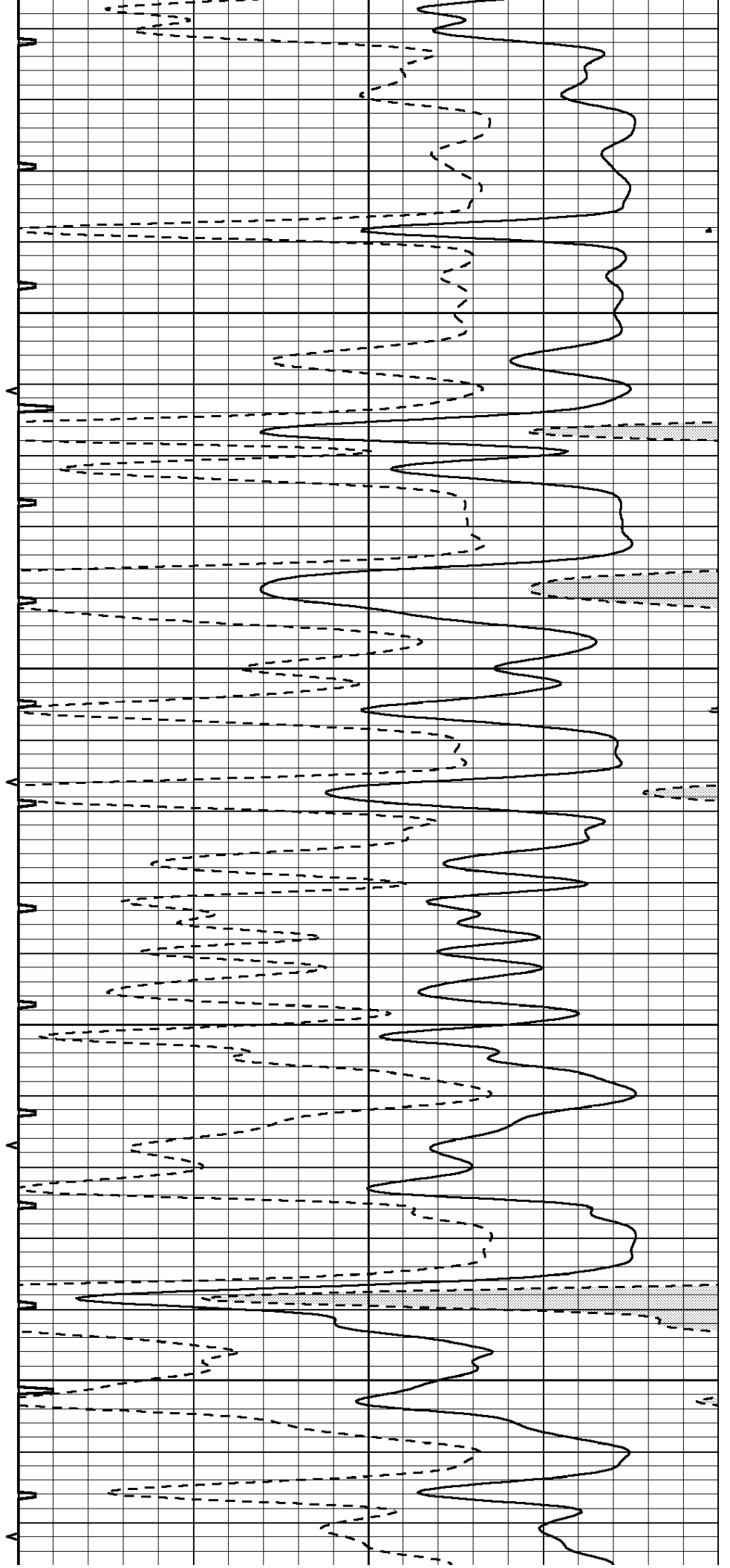


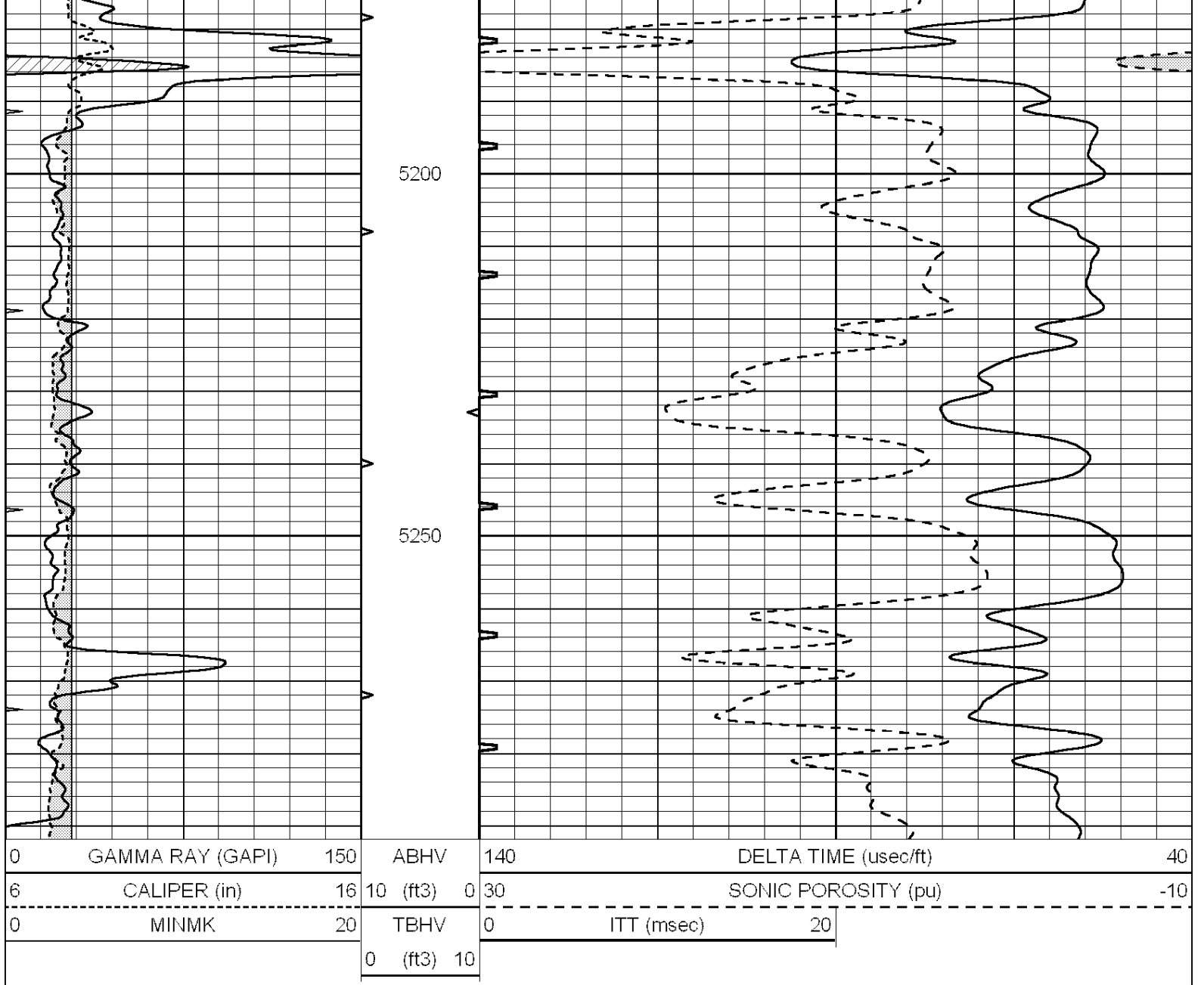
5000

5050

5100

5150





REPEAT SECTION

Database File: 010726pe.db
 Dataset Pathname: pass5.1
 Presentation Format: slt
 Dataset Creation: Sun Mar 17 07:39:49 2013 by Calc SOC 120430
 Charted by: Depth in Feet scaled 1:240

