



**COMPLETION
& PRODUCTION
SERVICES CO.**

**COMPENSATED
DENSITY / NEUTRON
PE LOG**

Company VINCENT OIL CORPORATION
Well KELLER NO. 1-27
Field WILDCAT
County FORD
State KANSAS

Company VINCENT OIL CORPORATION
Well KELLER NO. 1-27
Field WILDCAT
County FORD State KANSAS

Location: API # : 15-057-20879-00-00
SW - SE - NE - NE
1210' FNL & 375' FEL
SEC 27 TWP 28S RGE 23W
Permanent Datum GROUND LEVEL Elevation 2468
Log Measured From KELLY BUSHING 12' A.G.L.
Drilling Measured From KELLY BUSHING
Other Services
DIL
MEL/SON
Elevation
K.B. 2480
D.F. 2478
G.L. 2468

Date	03/17/2013		
Run Number	ONE		
Depth Driller	5320		
Depth Logger	5320		
Bottom Logged Interval	5296		
Top Log Interval	4100		
Casing Driller	8 5/8" @ 60'		
Casing Logger	604		
Bit Size	7 7/8"		
Type Fluid in Hole	CHEMICAL MUD	CHLORIDES 8,800 PPM	
Density / Viscosity	9.2 / 52		
pH / Fluid Loss	10.0 / 9.2		
Source of Sample	FLOWLINE		
Rim @ Meas. Temp	.54 @ 80 F		
Rmf @ Meas. Temp	.432 @ 80 F		
Rmc @ Meas. Temp	.648 @ 80 F		
Source of Rmf / Rmc	MEASUREMENT		
Rim @ BHT	.337 @ 128 F		
Time Circulation Stopped	2 HOURS		
Time Logger on Bottom	3:30 A.M.		
Maximum Recorded Temperature	128 F		
Equipment Number	4854		
Location	HAYS, KANSAS		
Recorded By	MIKE GARRISON		
Witnessed By	JIM HALL		

<<< Fold Here >>>

All interpretations are opinions based on inferences from electrical or other measurements and we cannot and do not guarantee the accuracy or correctness of any interpretation, and we shall not, except in the case of gross or willful negligence on our part, be liable or responsible for any loss, costs, damages, or expenses incurred or sustained by anyone resulting from any interpretation made by any of our officers, agents or employees. These interpretations are also subject to our general terms and conditions set out in our current Price Schedule.

Comments

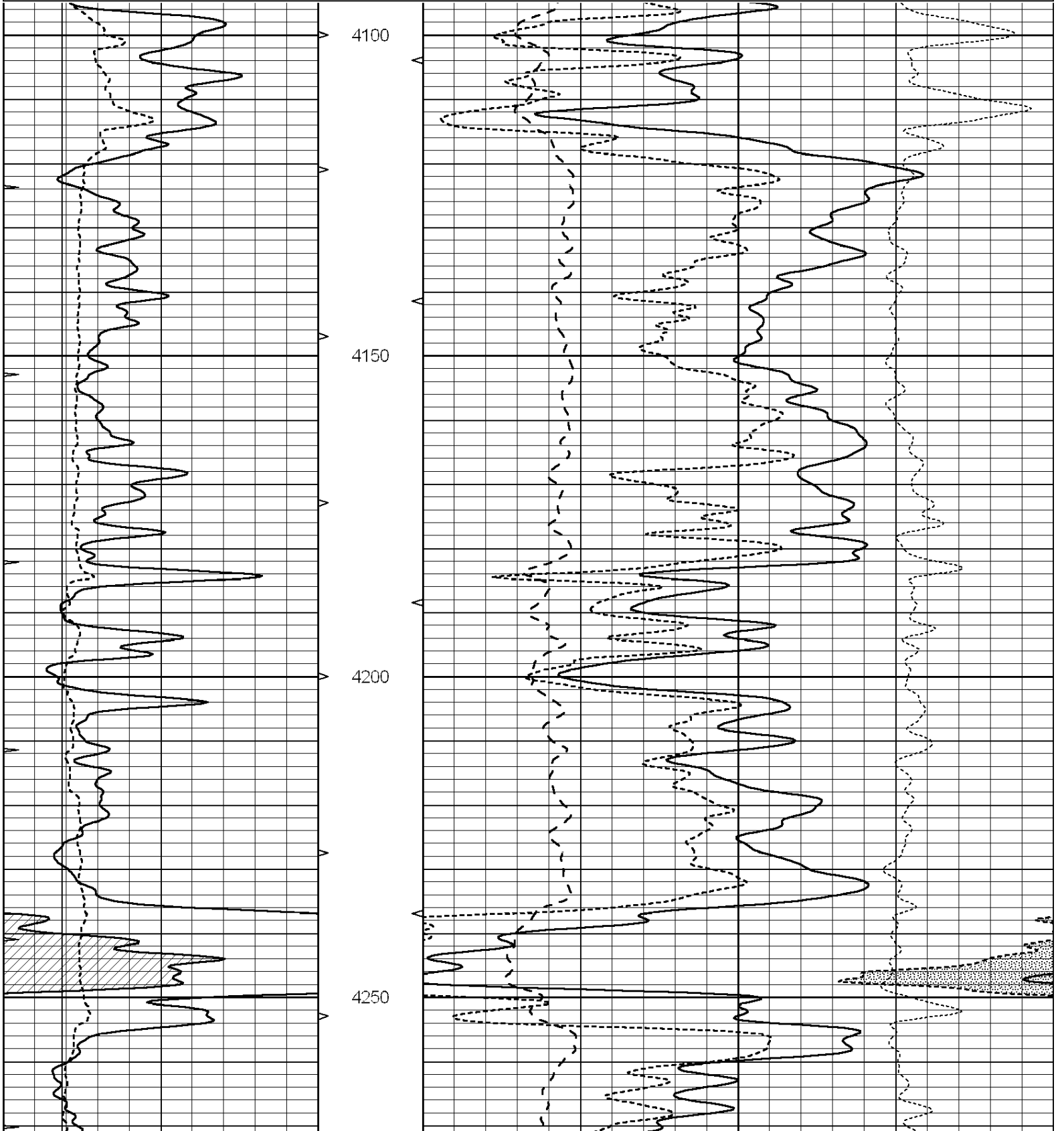
THANK YOU FOR USING "NABORS" HAYS, KANSAS (785) 628-6395
DIRECTIONS
FORD, KS- NORTH TO SADDLE RD, WEST ON BLACKTOP TO 123 RD, SOUTH TO DEAD END, .5 WEST,
SOUTH INTO AT TANK BATTERIES

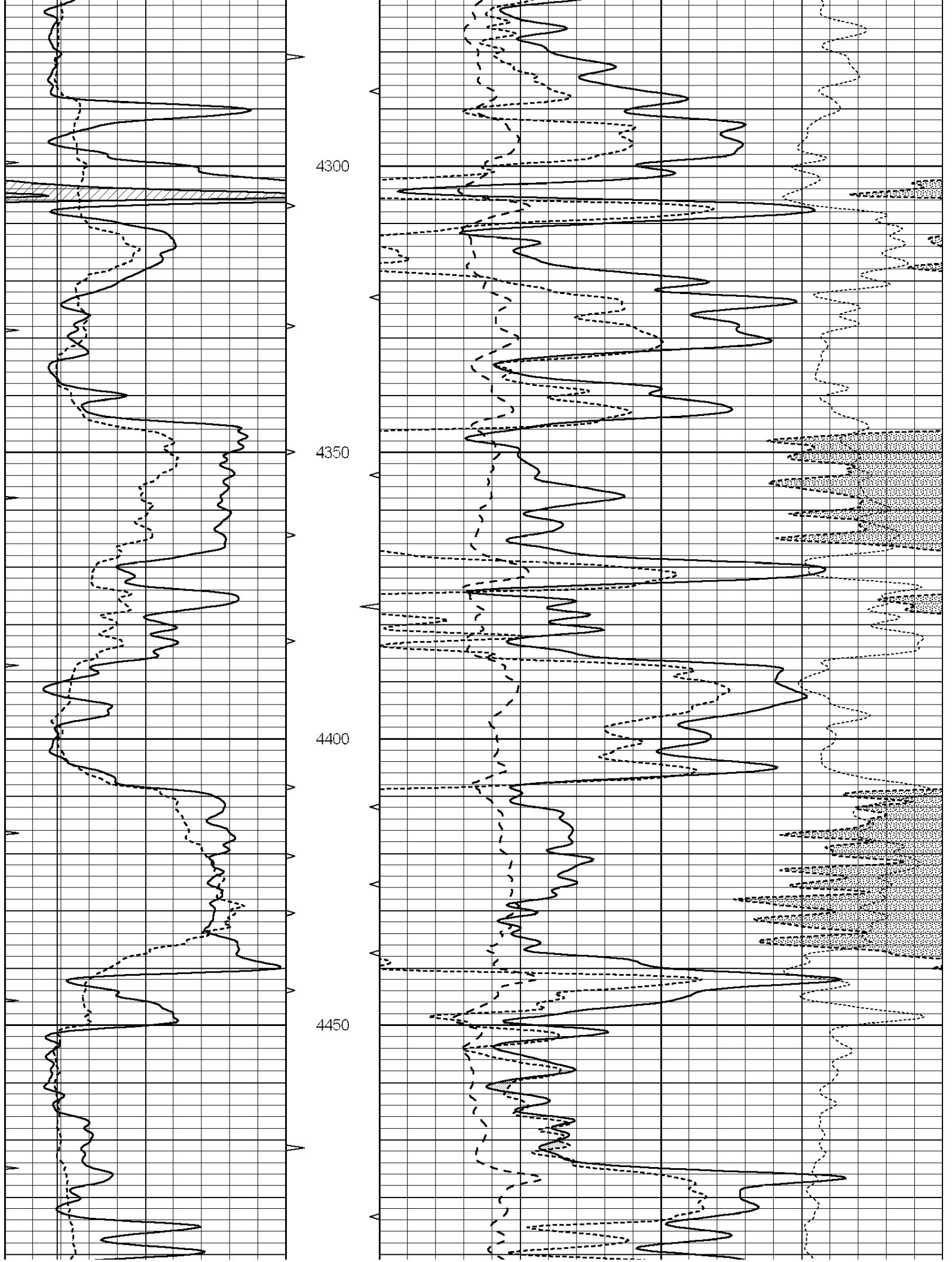


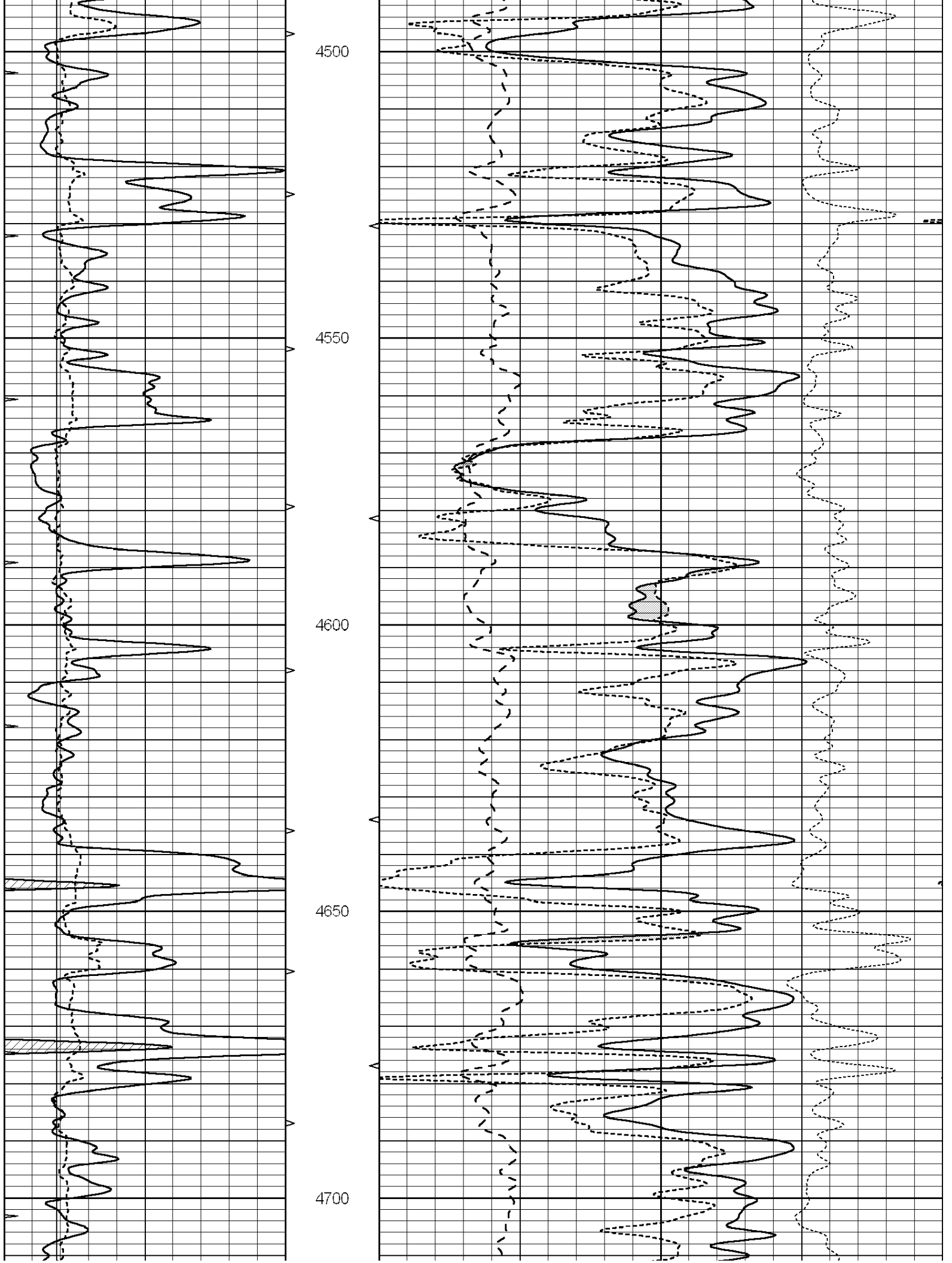
MAIN SECTION

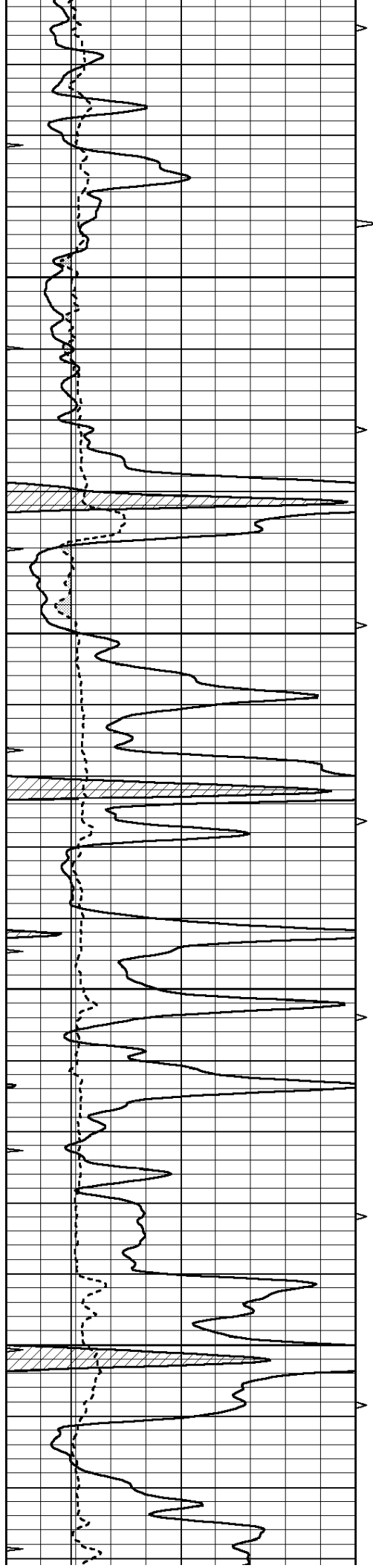
Database File: 010726pe.db
 Dataset Pathname: pass3.1
 Presentation Format: _ldt_neu
 Dataset Creation: Sun Mar 17 05:26:46 2013 by Calc SOC 120430
 Charted by: Depth in Feet scaled 1:240

0	GAMMA RAY (GAPI)	150	ABHV	30	COMPENSATED DENSITY (pu)	-10			
6	CALIPER (in)	16	10 (ft3)	0	30	COMPENSATED NEUTRON (pu)	-10		
0	MINMK	20	TBHV	0	PE	10	-0.25	CORRECTION (g/cc)	0.25
			0 (ft3)	10					







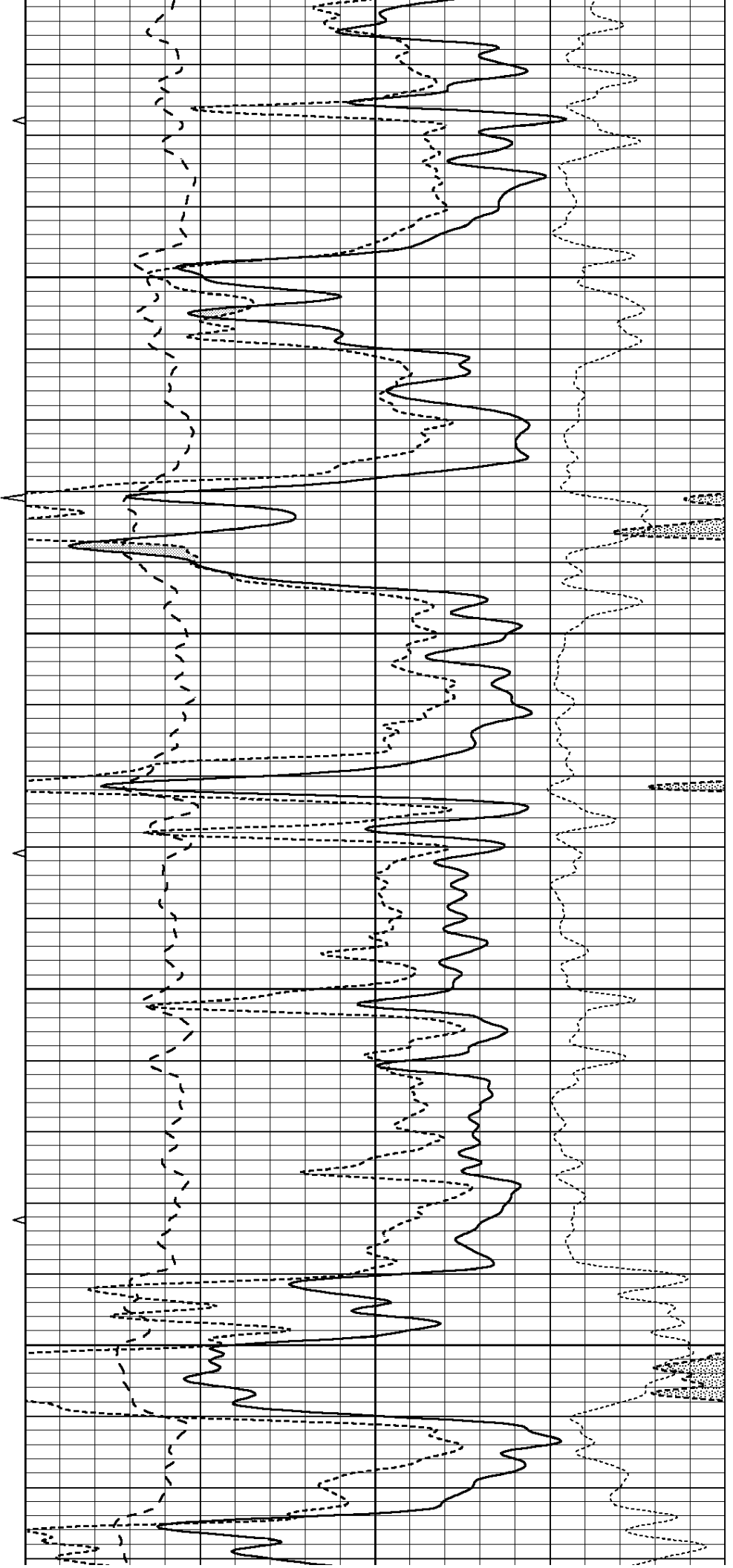


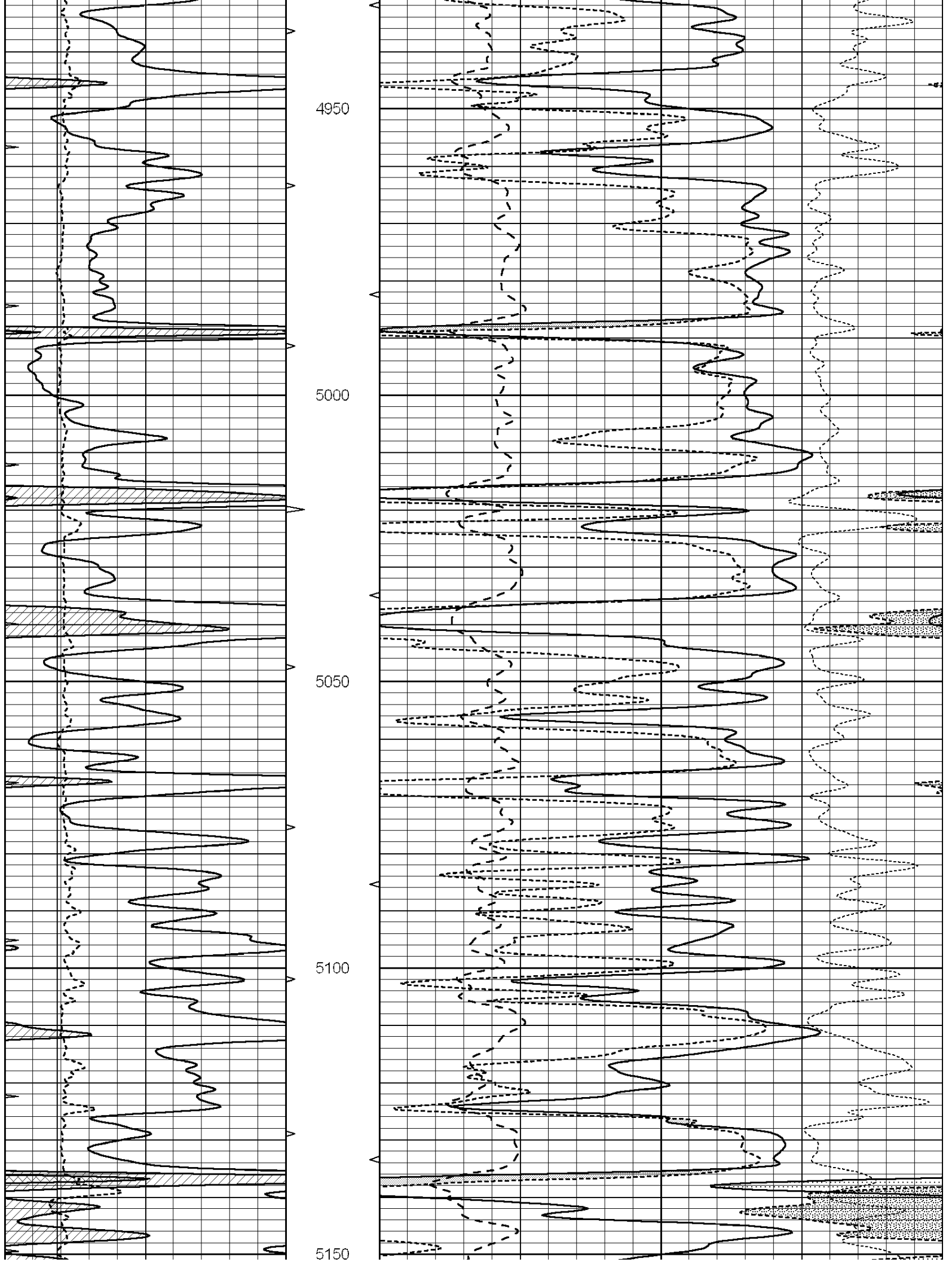
4750

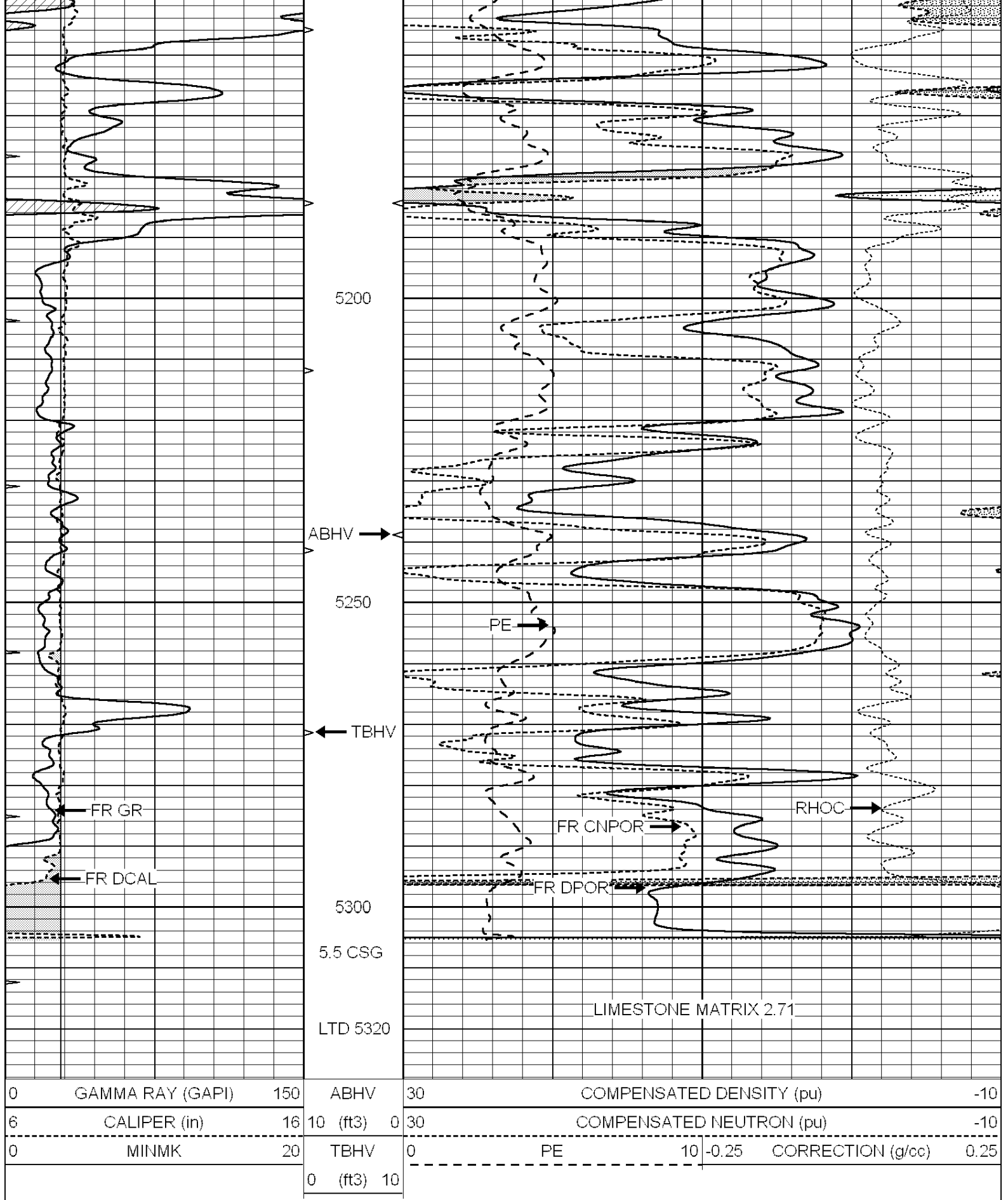
4800

4850

4900





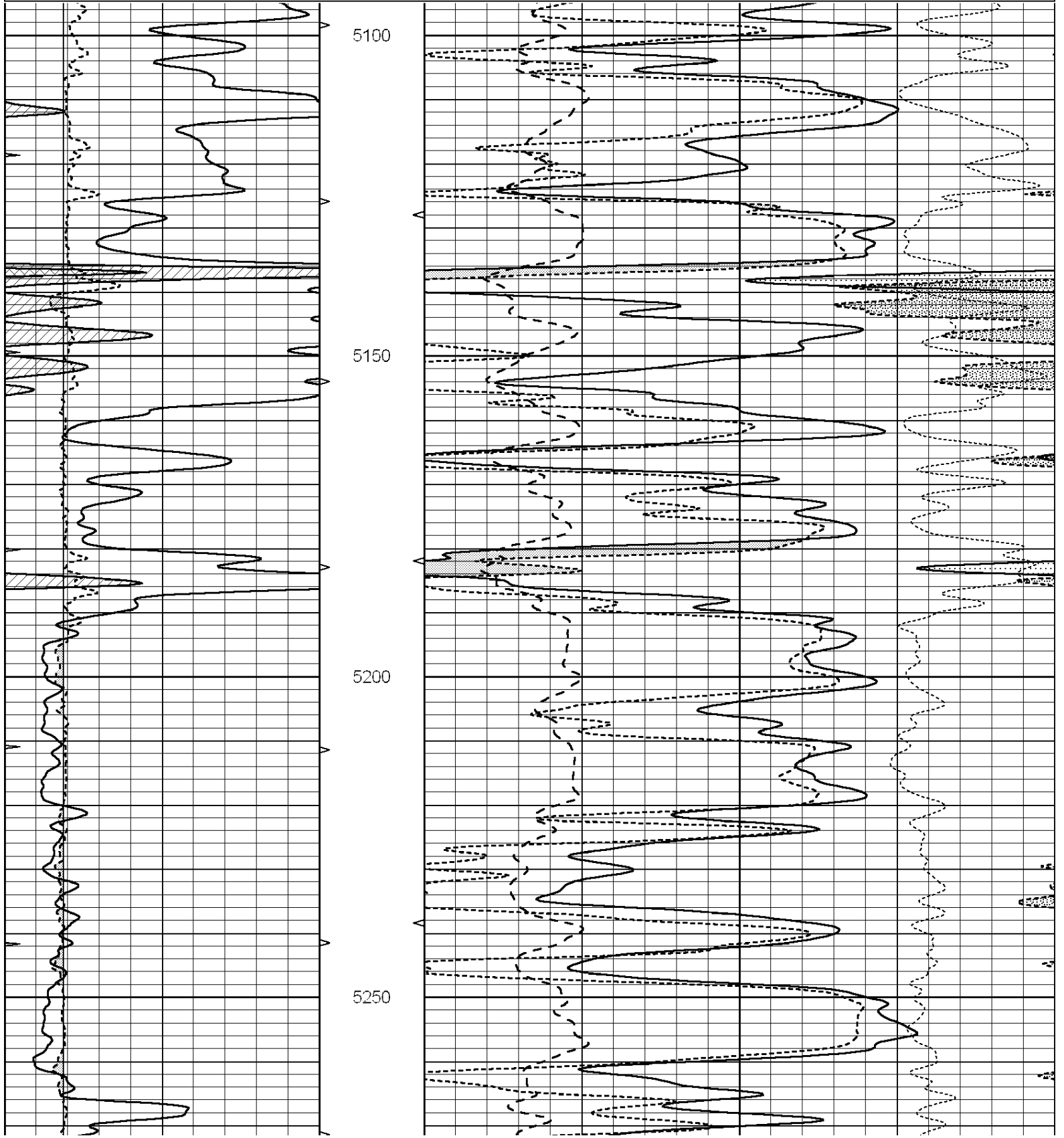


COMPLETION
& PRODUCTION
SERVICES

REPEAT SECTION

Database File: 010726pe.db
 Dataset Pathname: pass2.2
 Presentation Format: _ldt_neu
 Dataset Creation: Sun Mar 17 06:04:53 2013 by Calc SOC 120430
 Charted by: Depth in Feet scaled 1:240

0	GAMMA RAY (GAPI)	150	ABHV	30	COMPENSATED DENSITY (pu)			-10	
6	CALIPER (in)	16	10 (ft3)	0	COMPENSATED NEUTRON (pu)			-10	
0	MINMK	20	TBHV	0	PE	10	-0.25	CORRECTION (g/cc)	0.25
			0 (ft3)	10					





Calibration Report

Database File: 010726pe.db
 Dataset Pathname: pass3.1
 Dataset Creation: Sun Mar 17 05:26:46 2013 by Calc SOC 120430

Dual Induction Calibration Report

Serial-Model: PROBE9-DILG
 Surface Cal Performed: Sun Mar 10 00:44:14 2013
 Downhole Cal Performed: Mon Jul 28 12:02:56 2008
 After Survey Verification Performed: Mon Jul 28 12:02:56 2008

Surface Calibration

Loop:	Readings			References			Results	
	Air	Loop		Air	Loop		m	b
Deep	-0.014	0.629	V	0.000	400.000	mmho/m	621.923	-9.000
Medium	0.039	0.728	V	0.000	464.000	mmho/m	640.000	-19.000
Internal:	Zero	Cal		Zero	Cal		m	b
Deep	0.011	0.610	V	0.000	400.000	mmho/m	667.135	-7.256
Medium	0.005	0.712	V	0.000	464.000	mmho/m	655.677	-3.102

Downhole Calibration

	Readings			References			Results	
	Zero	Cal		Zero	Cal		m'	b'
Deep	0.000	0.000	mmho/m	14.508	388.384	mmho/m	1.000	0.000
Medium	0.000	0.000	mmho/m	166.367	504.400	mmho/m	1.000	0.000
LL3		7.500	V		1400.000	Ohm-m		
		0.000	V		20.000	Ohm-m		
		-7.200	V		4000.000	mmho-m		

After Survey Verification

	Readings			Targets			Results	
	Zero	Cal		Zero	Cal		m'	b'
Deep	0.000	0.000	mmho/m	0.000	0.000	mmho/m	0.000	0.000
Medium	0.000	0.000	mmho/m	0.000	0.000	mmho/m	0.000	0.000

LL3

1.000 Ohm-m
0.000 Ohm-m
1.000 mmho-m1.000 Ohm-m
0.000 Ohm-m
1.000 mmho-mLitho Density Calibration Report
Serial: 006 Model: PRB

Master Calibration

Performed Sun Aug 15 09:48:41 2010

	Background	Magnesium	Aluminum	Sandstone	
Window 1	1686.6	11612.8	3932.0	12718.8	cps
Window 2	1531.4	9204.7	3267.8	9851.9	cps
Window 3	1198.3	4733.6	1952.5	4920.6	cps
Window 4	317.3	321.2	325.9	303.6	cps
Long Space	0.0	7673.3	1736.4	8320.4	cps
Short Space	1.7	2548.5	1657.2	2628.8	cps
Rho		1.7100	2.5900	1.3800	g/cc
Pe		0.0000	2.5700	1.5500	
Rib Angle	: 43.8	Rib Slope	: 0.961	Density/Spine Ratio	: 0.569
Spine Angle	: 73.8	Spine Slope	: 3.453	Spine Intercept	: -18.1

Before Survey Verification

Performed Wed Dec 31 18:00:00 1969

Window 1	0.0	0.0	0.0	0.0	cps
Window 2	0.0	0.0	0.0	0.0	cps
Window 3	0.0	0.0	0.0	0.0	cps
Window 4	0.0	0.0	0.0	0.0	cps
Long Space	0.0	0.0	0.0	0.0	cps
Short Space	0.0	0.0	0.0	0.0	cps
Measured Rho		0.0000	0.0000	0.0000	g/cc
Measured Correction		0.0000	0.0000	0.0000	g/cc
Measured Pe			0.0000	0.0000	

After Survey Verification

Performed Wed Dec 31 18:00:00 1969

Window 1	0.0	0.0	0.0	0.0	cps
Window 2	0.0	0.0	0.0	0.0	cps
Window 3	0.0	0.0	0.0	0.0	cps
Window 4	0.0	0.0	0.0	0.0	cps
Long Space	0.0	0.0	0.0	0.0	cps
Short Space	0.0	0.0	0.0	0.0	cps
Measured Rho		0.0000	0.0000	0.0000	g/cc
Measured Correction		0.0000	0.0000	0.0000	g/cc
Measured Pe			0.0000	0.0000	

Compensated Neutron Calibration Report

Serial Number: 070808
Tool Model: Probe

PRE-SURVEY VERIFICATION

Detector	Readings	Measured	Target
Short Space	cps		
Long Space	cps	pu	pu

POST-SURVEY VERIFICATION

Detector	Readings	Measured	Target
----------	----------	----------	--------

Detector

Readings

measured

Target

Short Space

cps

pu

pu

Long Space

cps

Gamma Ray Calibration Report

Serial Number: 070559
Tool Model: OPEN_GR
Performed: Sun Mar 10 00:43:54 2013

Calibrator Value: 1.0 GAPI

Background Reading: 0.0 cps
Calibrator Reading: 1.0 cps

Sensitivity: 0.3500 GAPI/cps