



**COMPLETION
& PRODUCTION
SERVICES CO.**

**DUAL
INDUCTION
LOG**

Company VINCENT OIL CORPORATION
Well KELLER NO. 1-27
Field WILDCAT
County FORD
State KANSAS

Company VINCENT OIL CORPORATION
Well KELLER NO. 1-27
Field WILDCAT
County FORD State KANSAS

Location: API # : 15-057-20879-00-00
SEC 27 TWP 28S RGE 23W
SW - SE - NE - NE
1210' FNL & 375' FEL
Permanent Datum GROUND LEVEL Elevation 2468
Log Measured From KELLY BUSHING 12' A.G.L.
Drilling Measured From KELLY BUSHING
Other Services
CNL/CDL/PE
MEL/SON
Elevation
K.B. 2480
D.F. 2478
G.L. 2468

Date	03/17/2013
Run Number	ONE
Depth Driller	5320
Depth Logger	5320
Bottom Logged Interval	5318
Top Log Interval	00
Casing Driller	8 5/8" @ 60'
Casing Logger	604
Bit Size	7 7/8"
Type Fluid in Hole	CHEMICAL MUD
Density / Viscosity	9.2 / 52
pH / Fluid Loss	10.0 / 9.2
Source of Sample	FLOWLINE
Rim @ Meas. Temp	.54 @ 80 F
Rmf @ Meas. Temp	.432 @ 80 F
Rmc @ Meas. Temp	.648 @ 80 F
Source of Rmf / Rmc	MEASUREMENT
Rim @ BHT	.337 @ 128 F
Time Circulation Stopped	2 HOURS
Time Logger on Bottom	3:30 A.M.
Maximum Recorded Temperature	128 F
Equipment Number	4854
Location	HAYS, KANSAS
Recorded By	MIKE GARRISON
Witnessed By	JIM HALL

<<< Fold Here >>>

All interpretations are opinions based on inferences from electrical or other measurements and we cannot and do not guarantee the accuracy or correctness of any interpretation, and we shall not, except in the case of gross or willful negligence on our part, be liable or responsible for any loss, costs, damages, or expenses incurred or sustained by anyone resulting from any interpretation made by any of our officers, agents or employees. These interpretations are also subject to our general terms and conditions set out in our current Price Schedule.

Comments

THANK YOU FOR USING "NABORS" HAYS, KANSAS (785) 628-6395
DIRECTIONS
FORD, KS- NORTH TO SADDLE RD, WEST ON BLACKTOP TO 123 RD, SOUTH TO DEAD END, .5 WEST,
SOUTH INTO AT TANK BATTERIES



MAIN SECTION

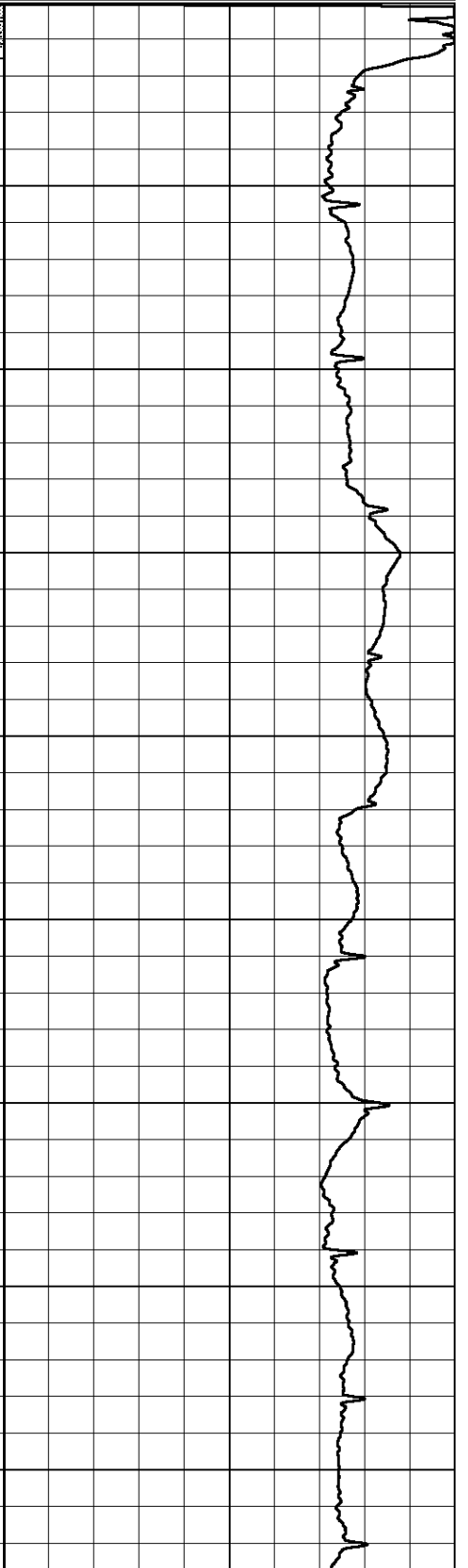
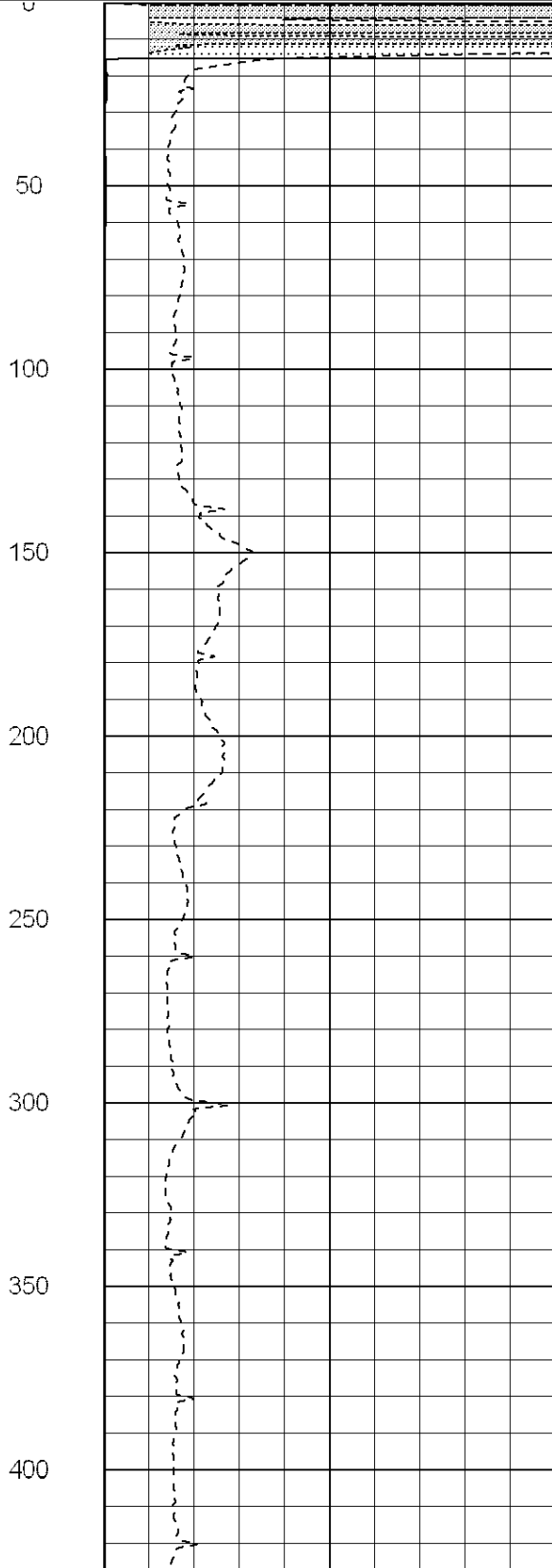
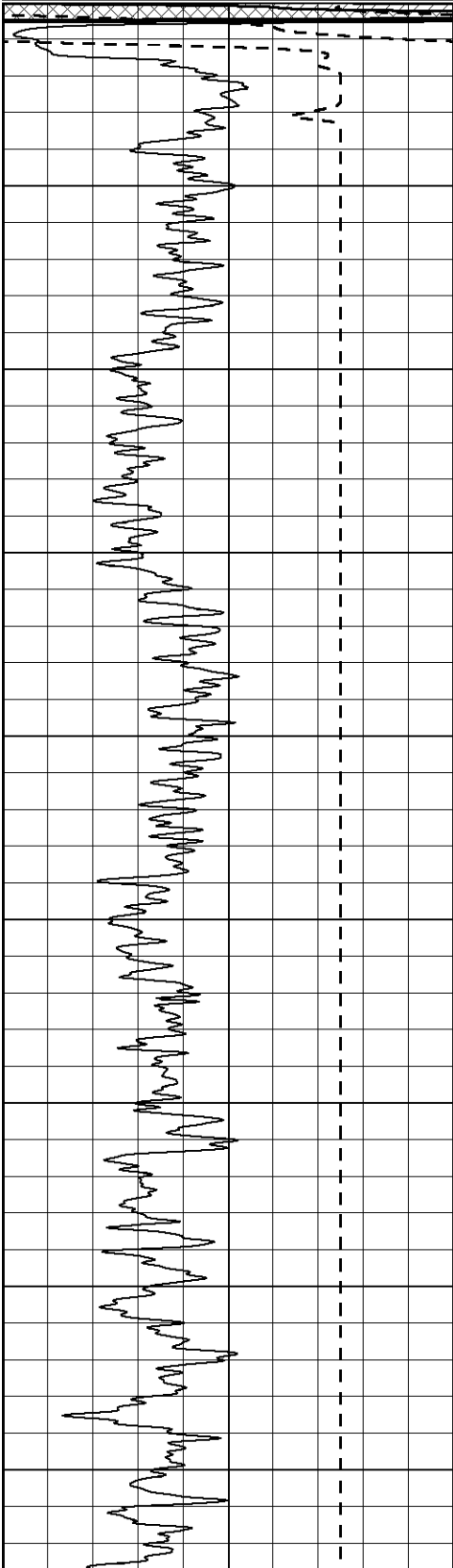
Database File: 010726pe.db
 Dataset Pathname: pass3.1
 Presentation Format: _dil2
 Dataset Creation: Sun Mar 17 05:26:46 2013 by Calc SOC 120430
 Charted by: Depth in Feet scaled 1:600

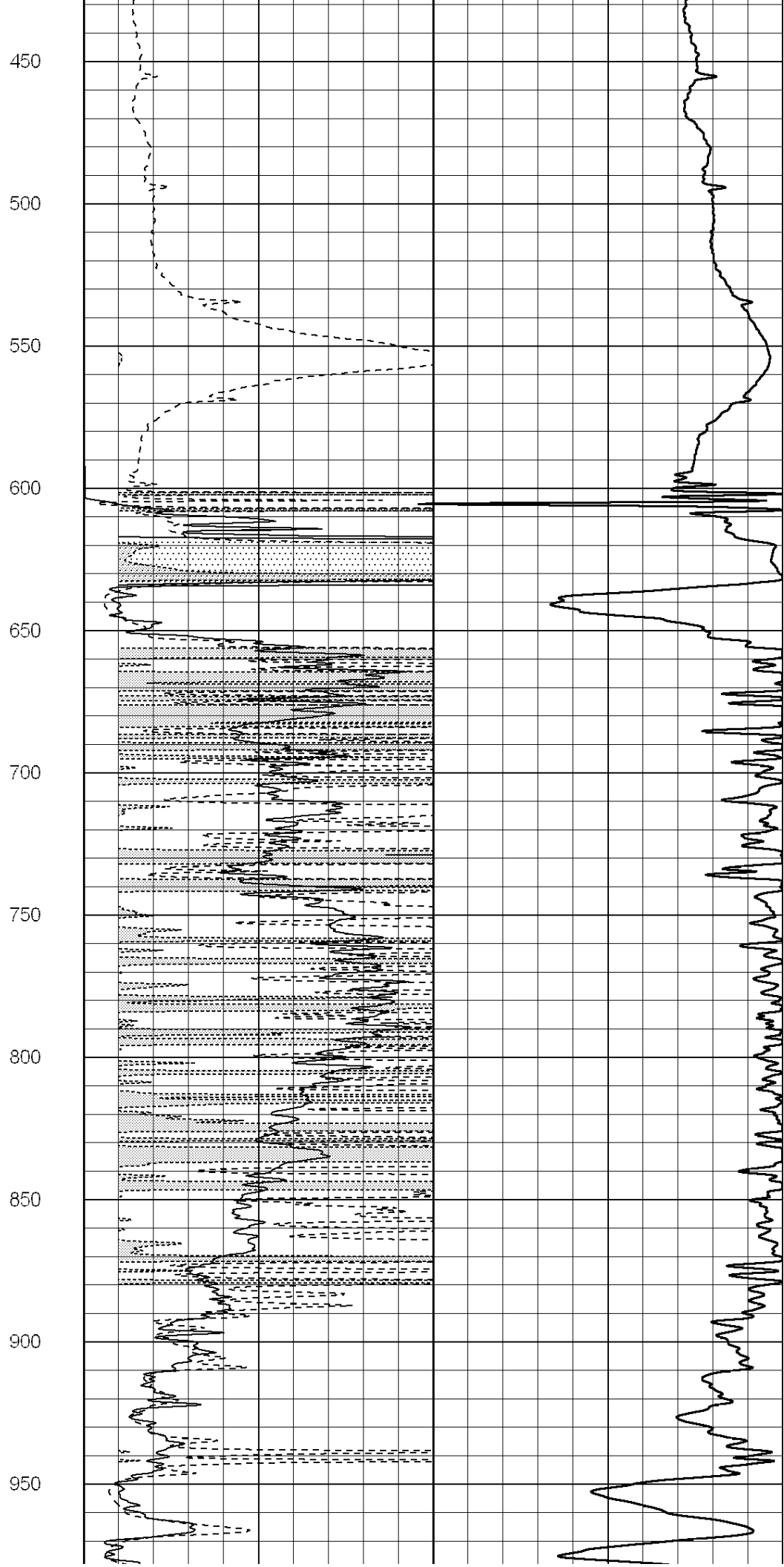
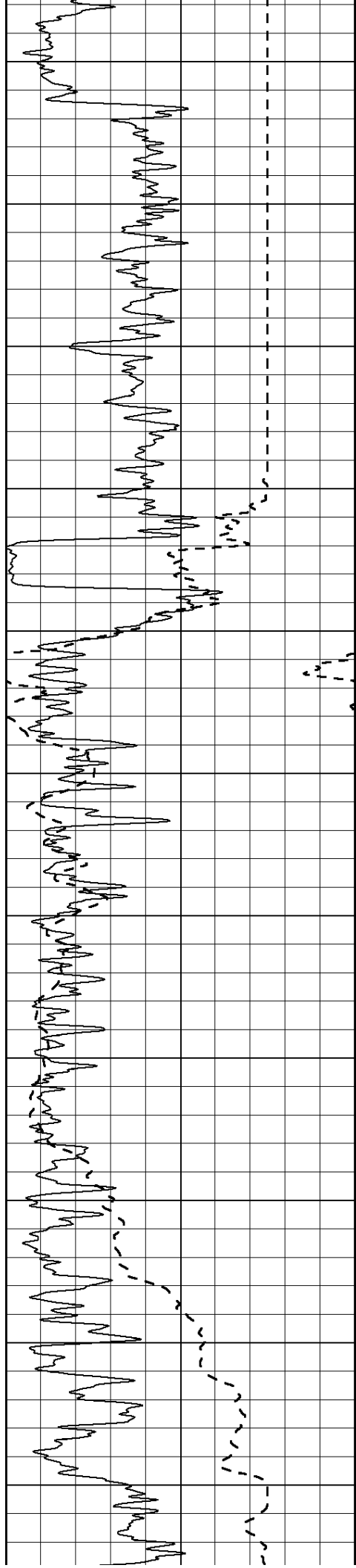
0	Gamma Ray (GAPI)	150
-100	SP (mV)	100

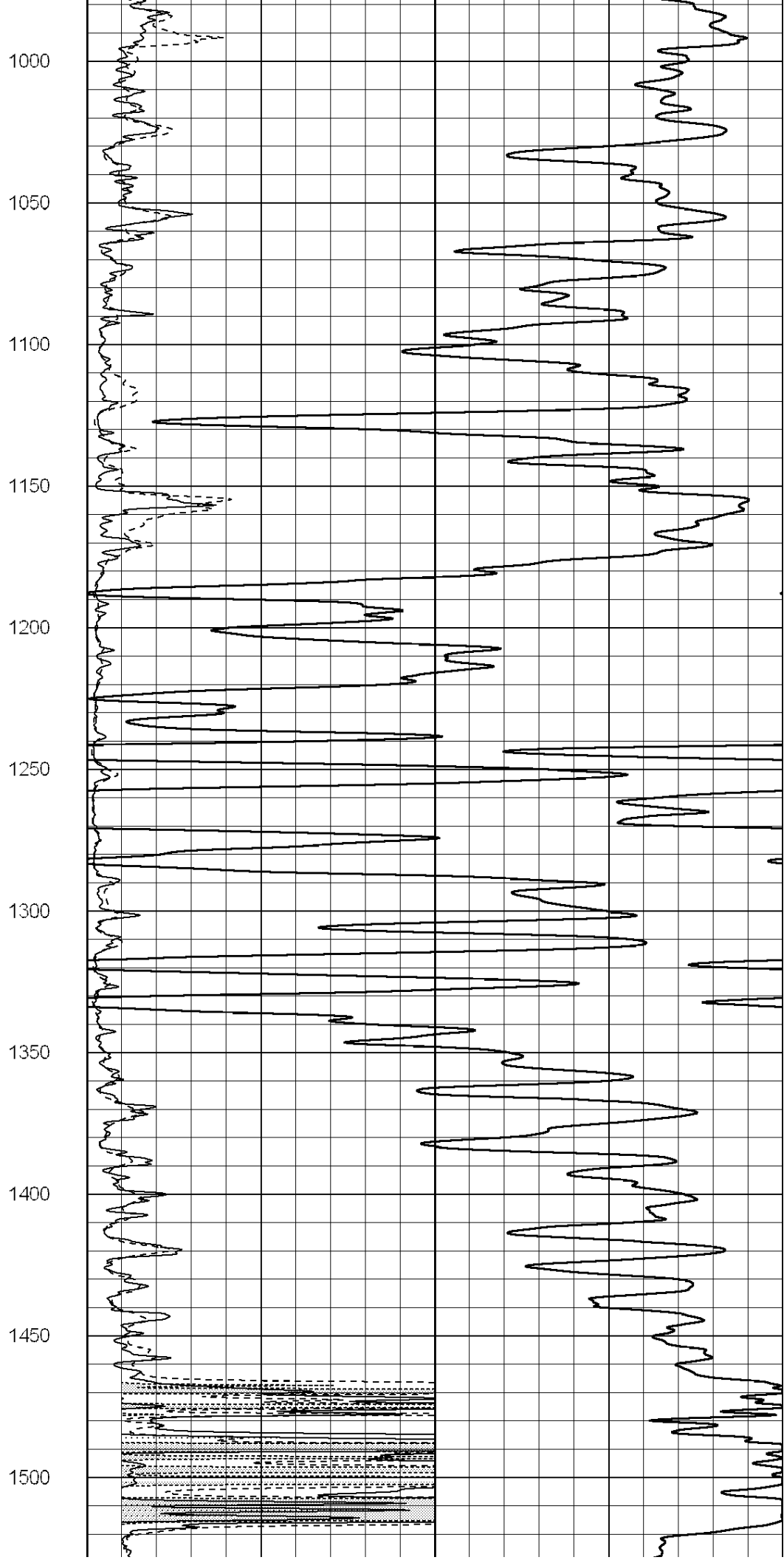
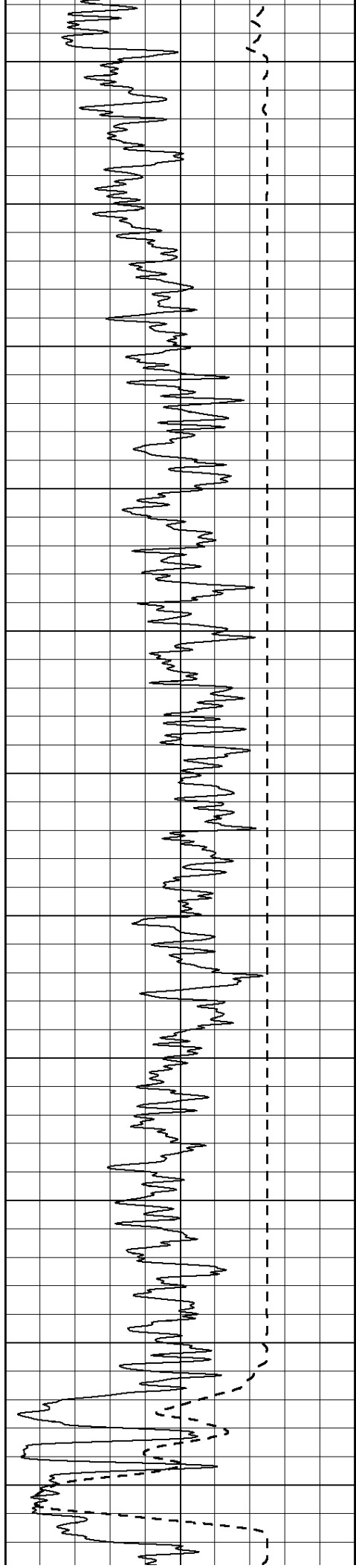
0	RLL3 (Ohm-m)	50
0	RILD (Ohm-m)	50

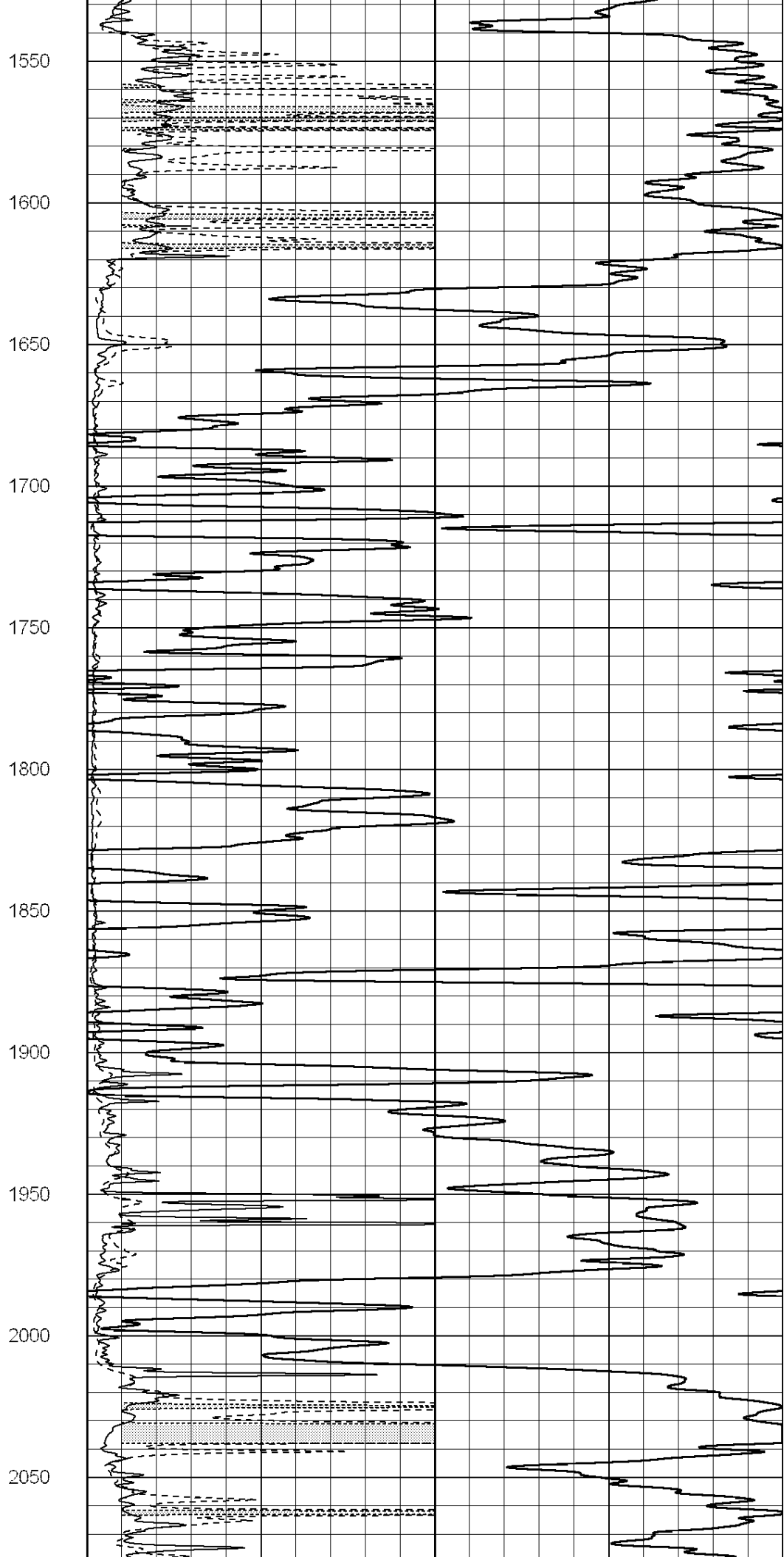
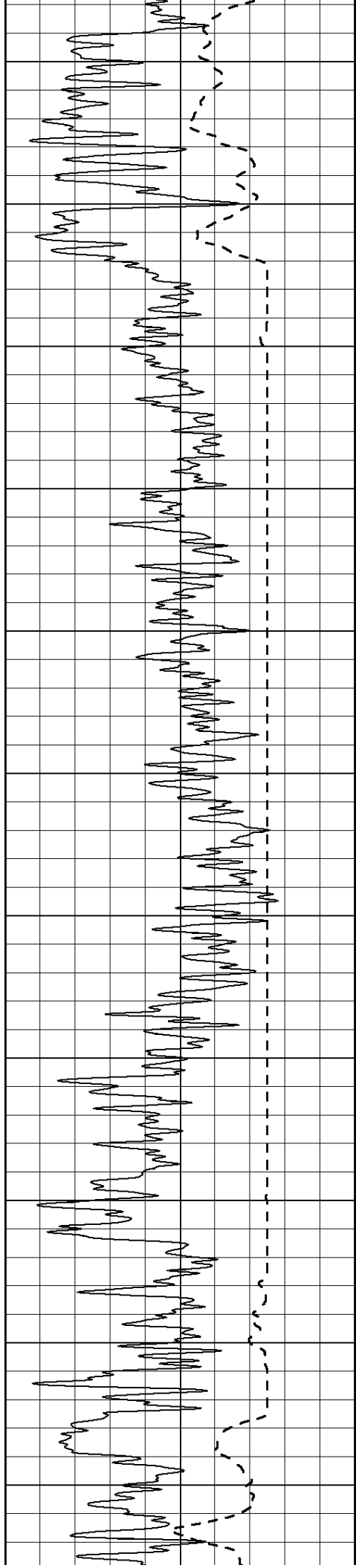
1000	CILD (mmho/m)	0
------	---------------	---

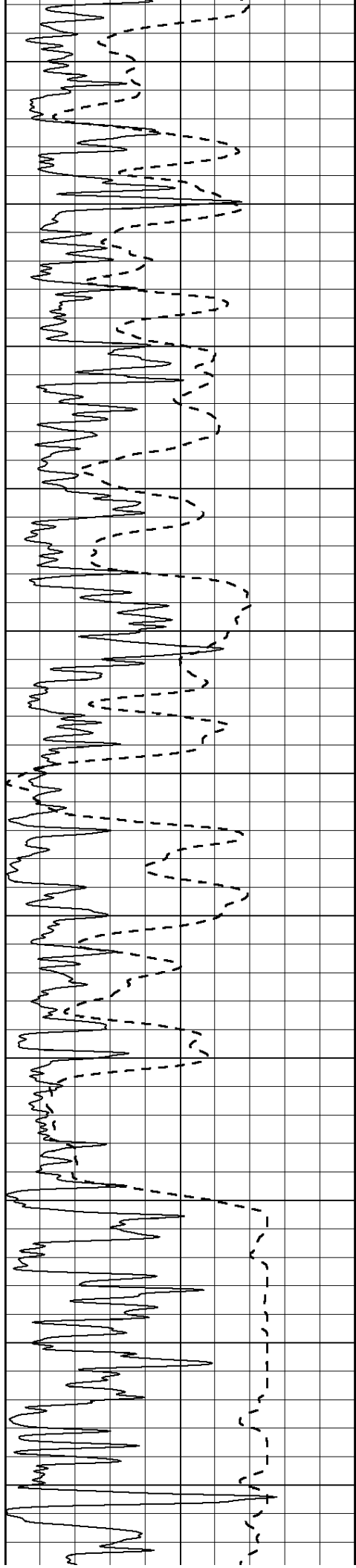
50	RILD X10 (Ohm-m)	500
50	RLL3 X10 (Ohm-m)	500











2100

2150

2200

2250

2300

2350

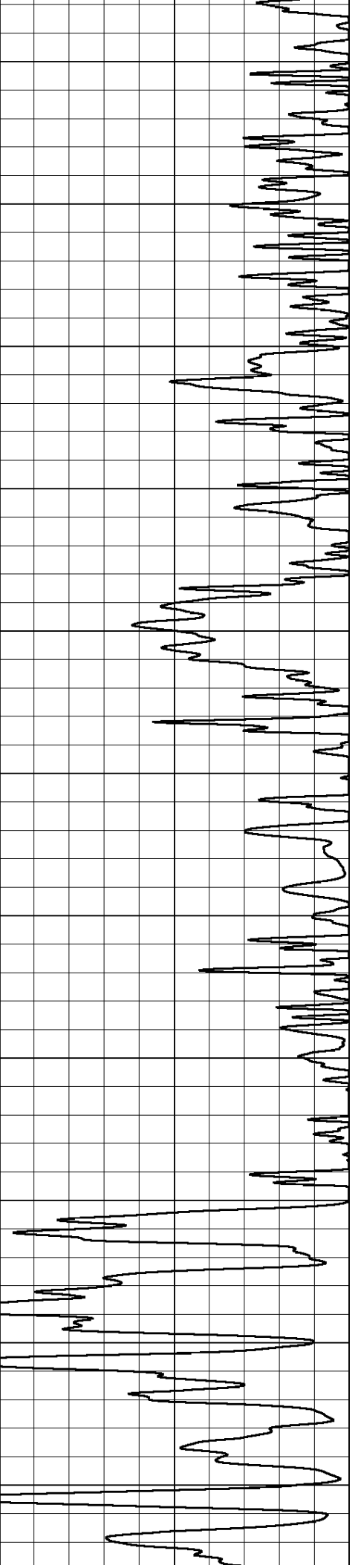
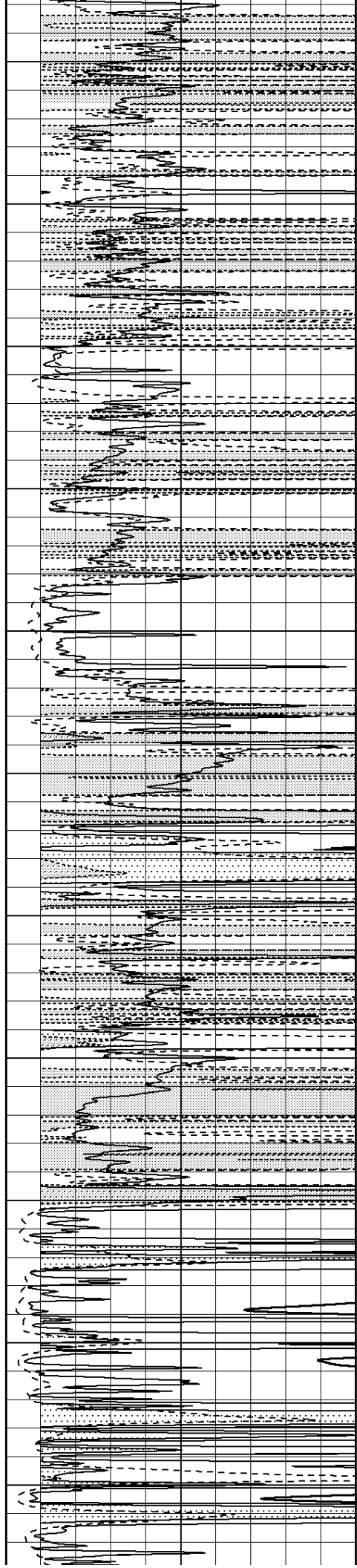
2400

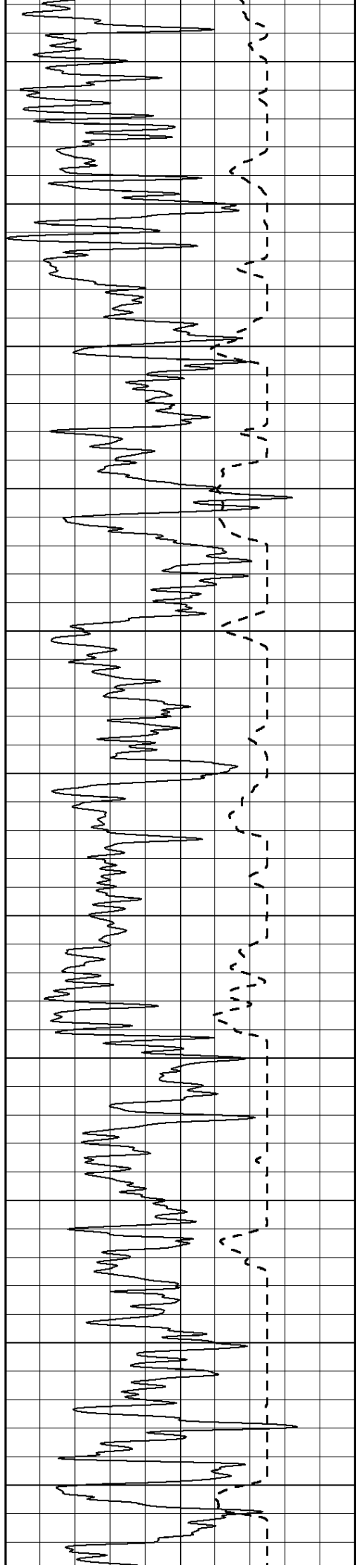
2450

2500

2550

2600





2650

2700

2750

2800

2850

2900

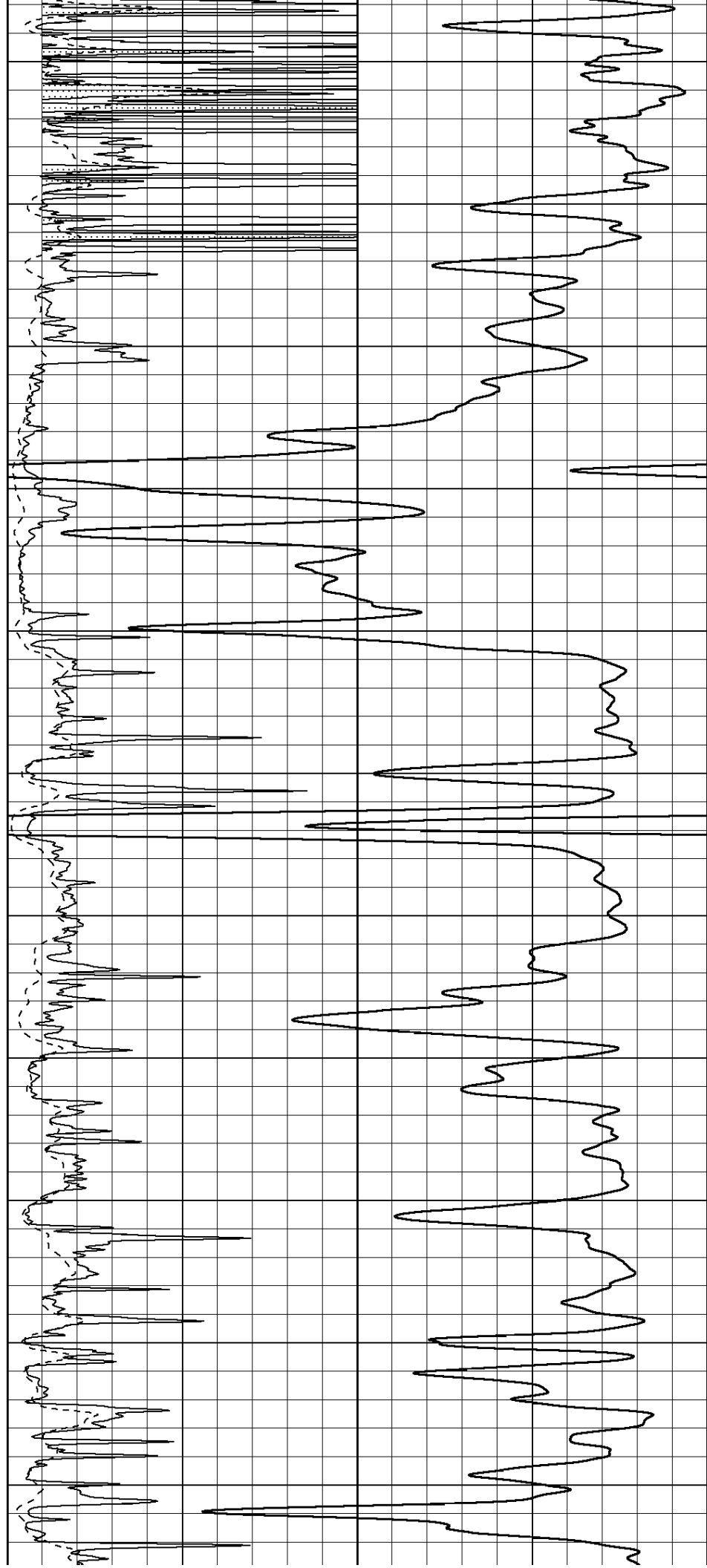
2950

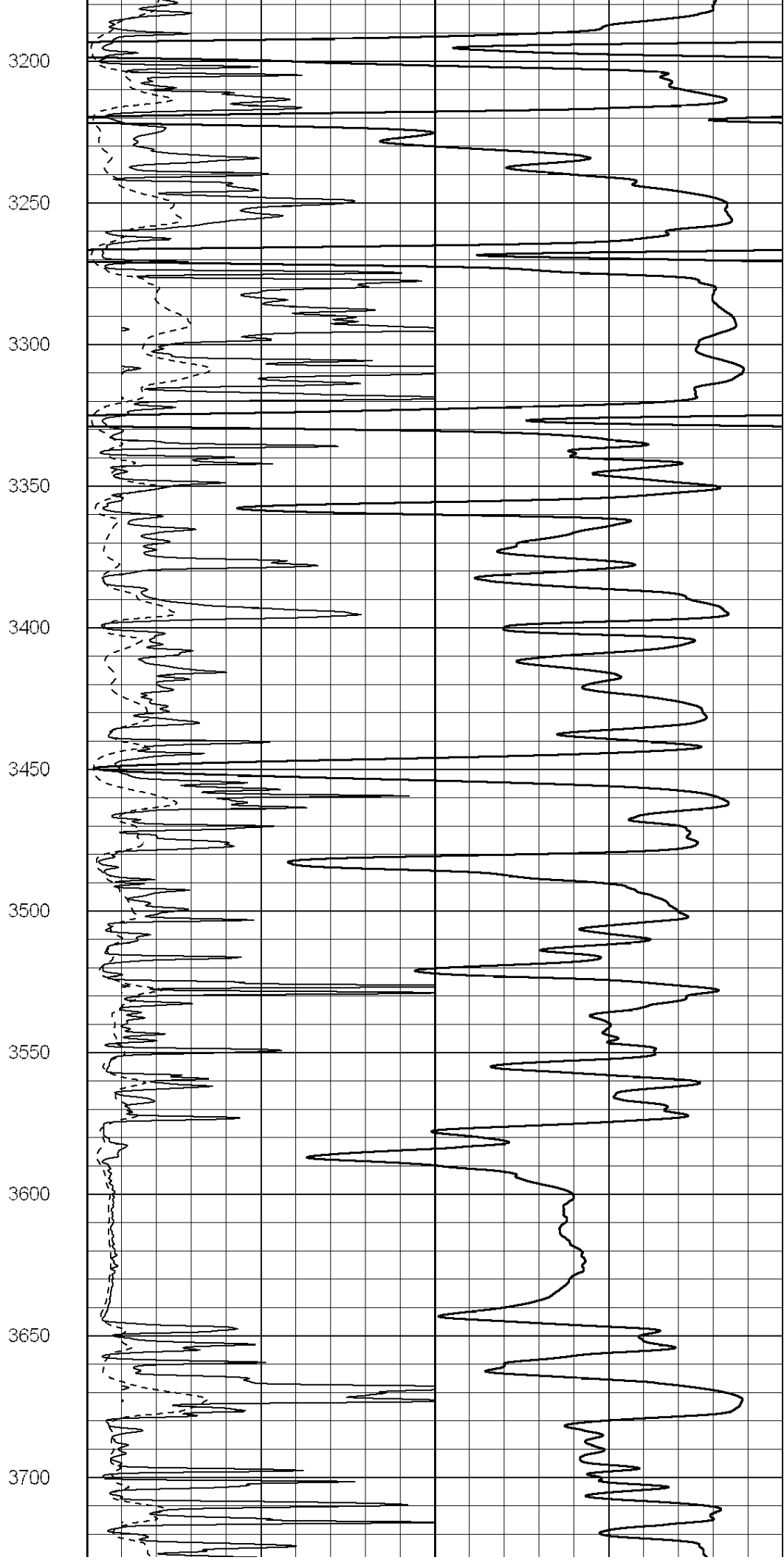
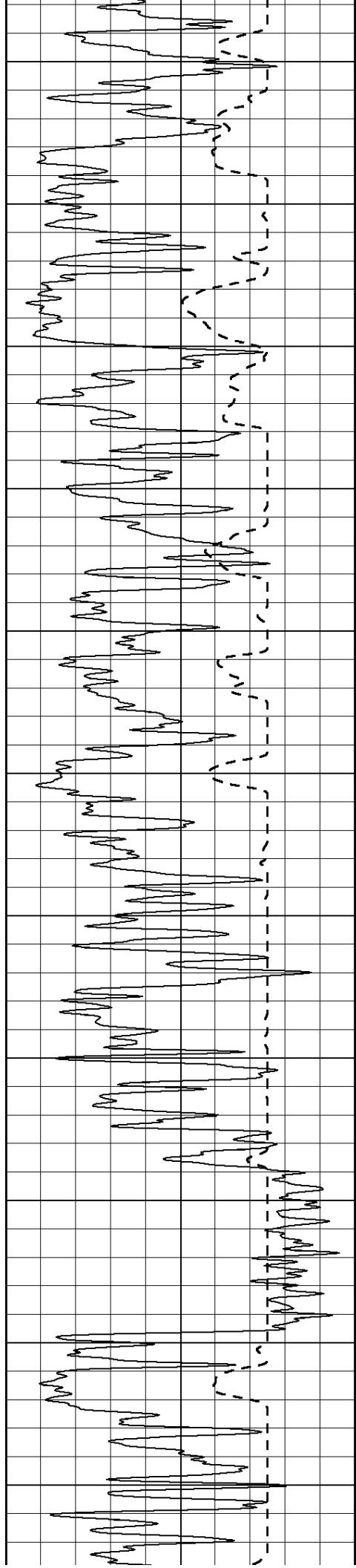
3000

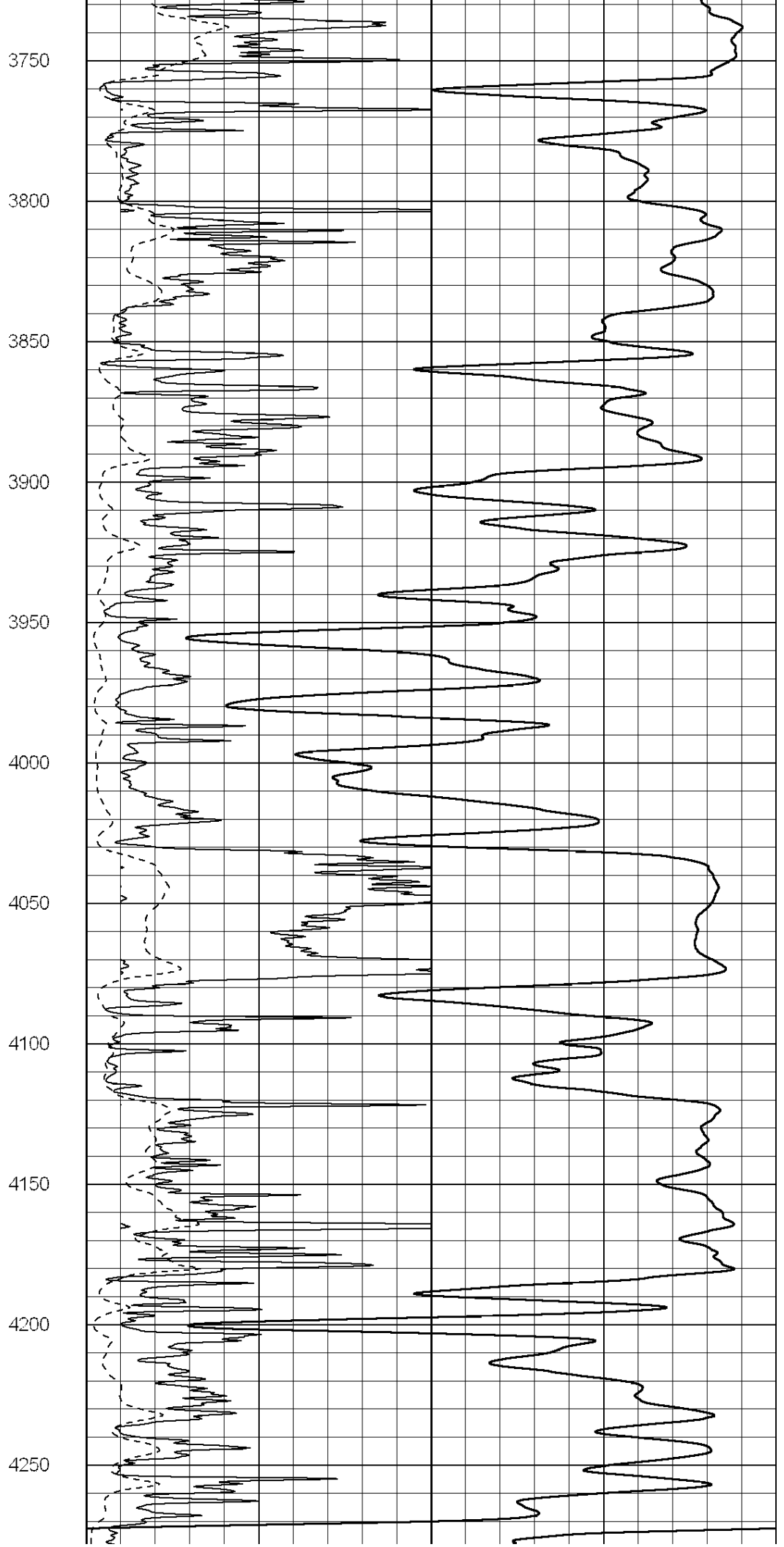
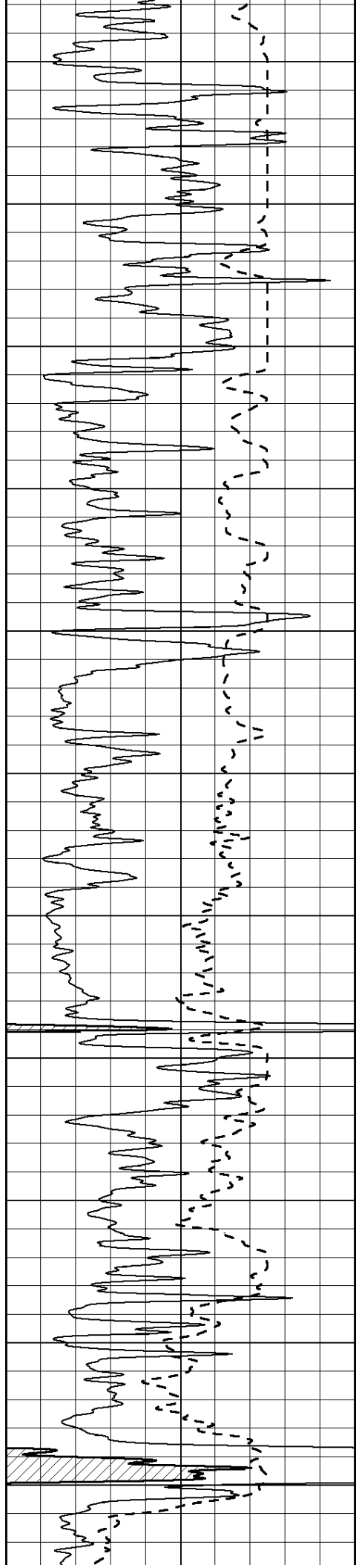
3050

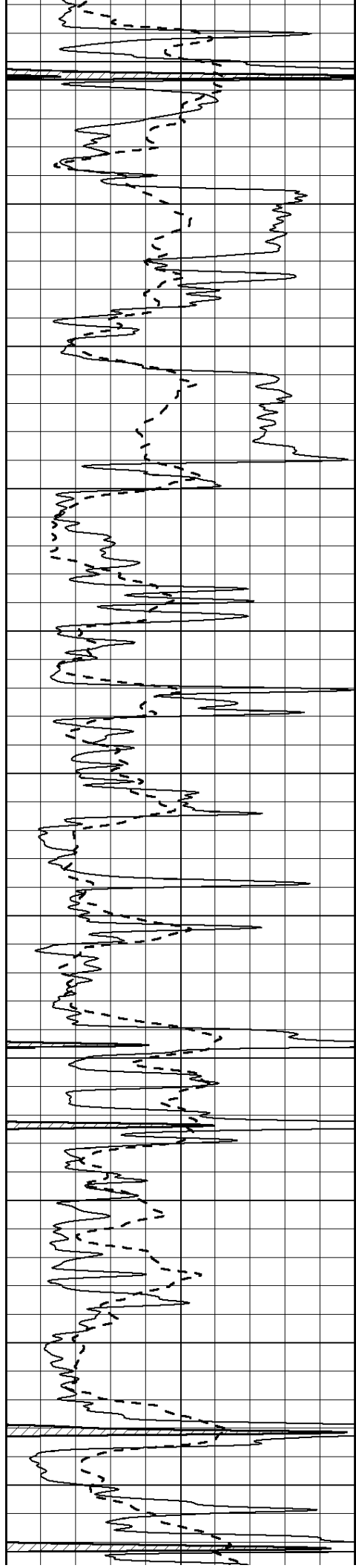
3100

3150









4300

4350

4400

4450

4500

4550

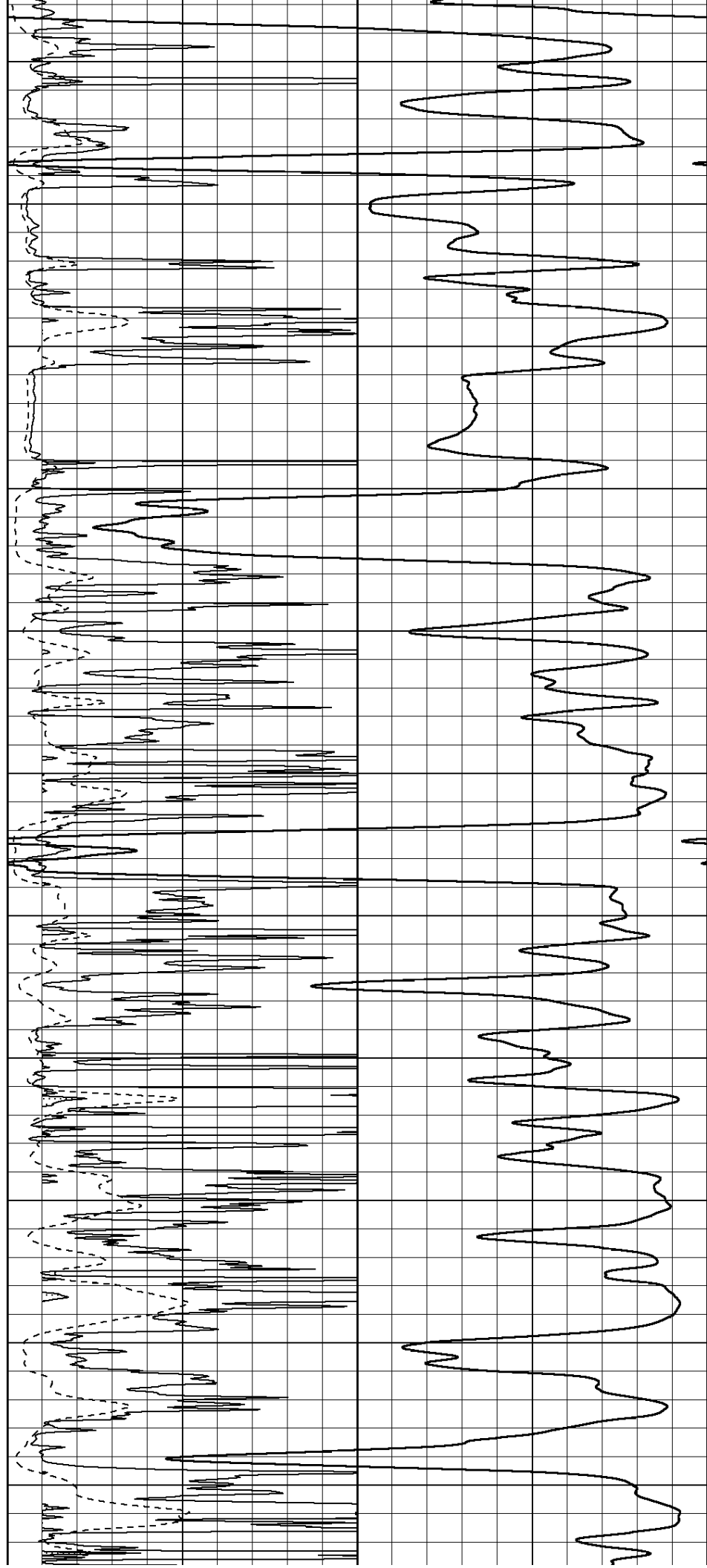
4600

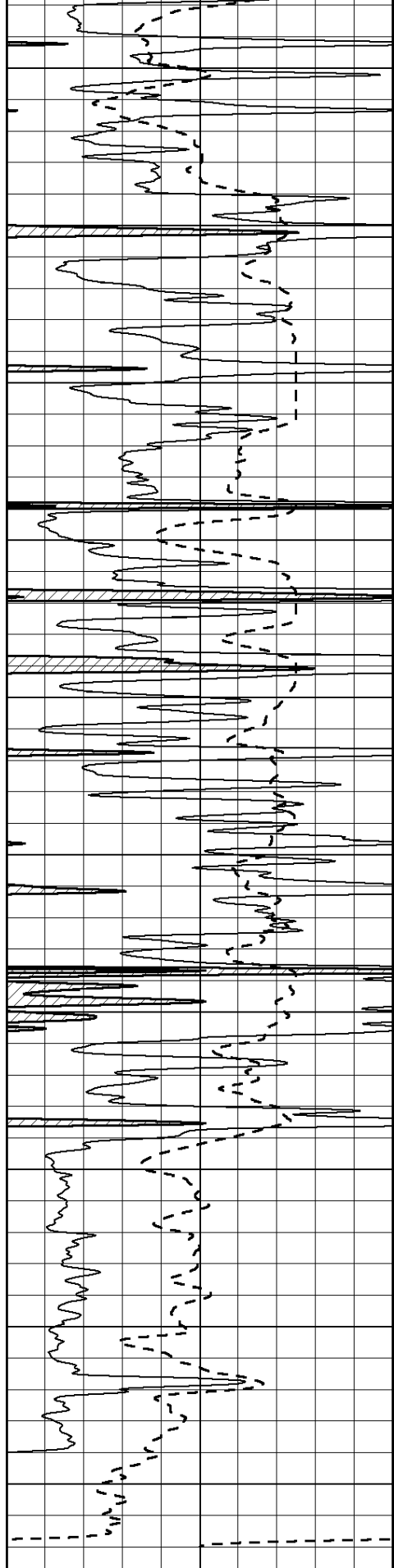
4650

4700

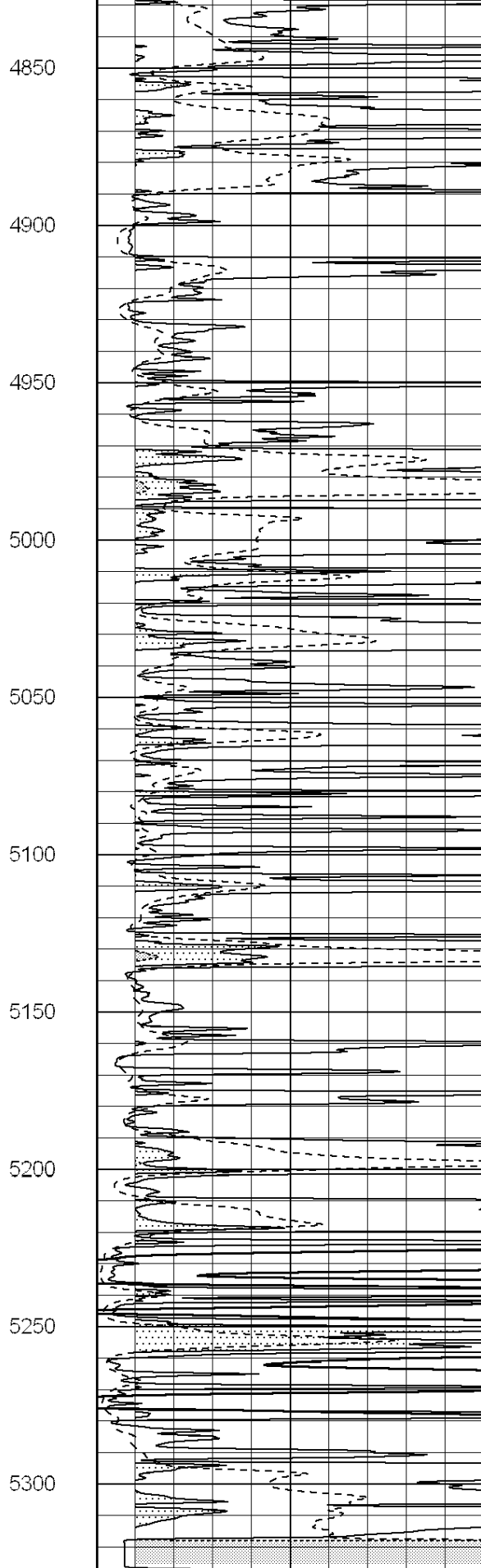
4750

4800

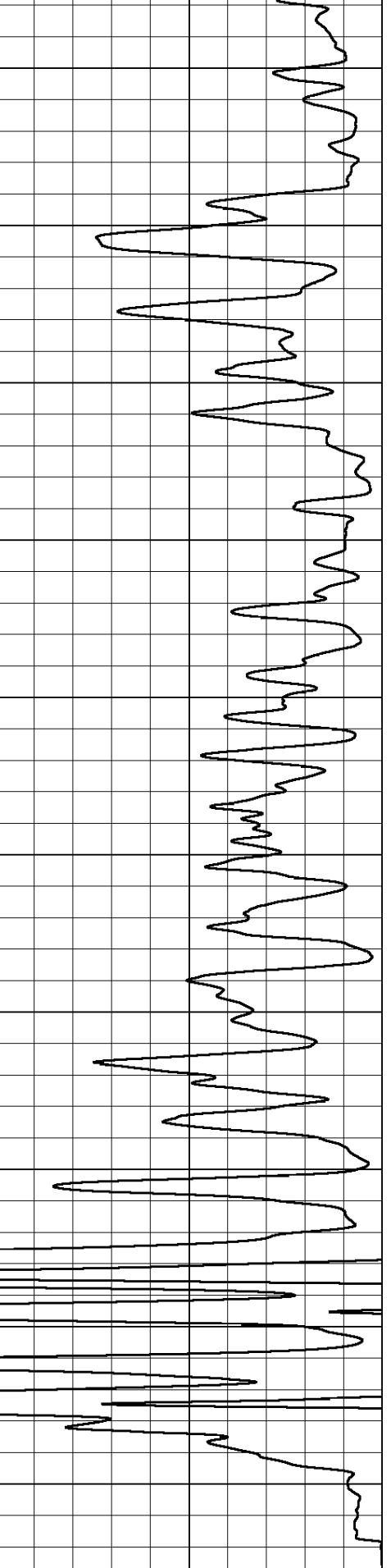




0 Gamma Ray (GAPI) 150
 -100 SP (mV) 100



0 RLL3 (Ohm-m) 50
 0 RILD (Ohm-m) 50
 1000 CILD (mmho/m) 0



50 RILD X10 (Ohm-m) 500

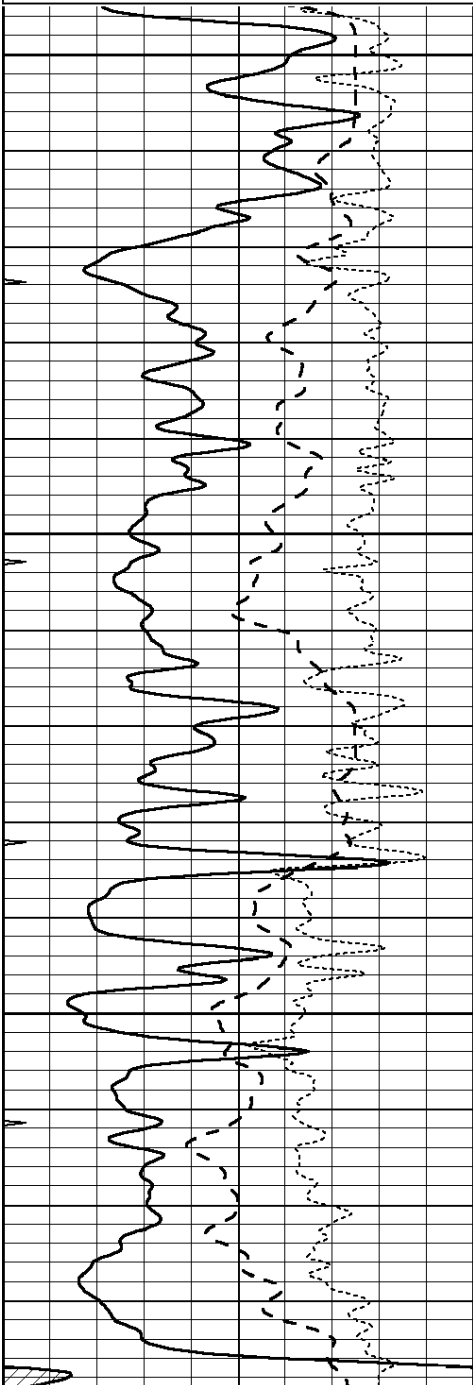


MAIN SECTION

Database File: 010726pe.db
 Dataset Pathname: pass3.1
 Presentation Format: _dil
 Dataset Creation: Sun Mar 17 05:26:46 2013 by Calc SOC 120430
 Charted by: Depth in Feet scaled 1:240

0	GAMMA RAY (GAPI)	150
-100	SP (mV)	100
-250	Rxo/Rt	50
0	MINMK	20

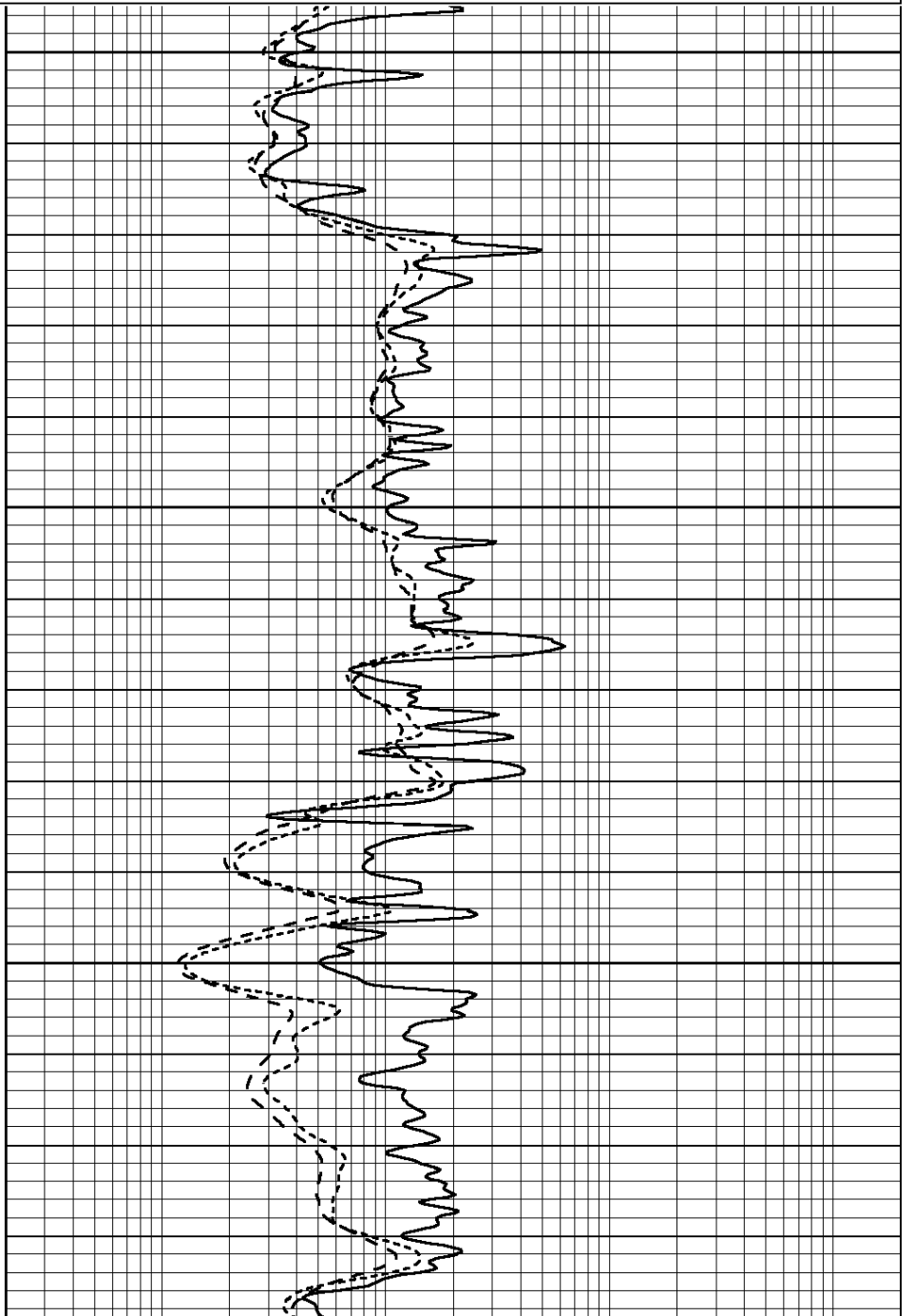
0.2	SHALLOW GUARD (Ohm-m)	2000
0.2	DEEP INDUCTION (Ohm-m)	2000
0.2	MEDIUM INDUCTION (Ohm-m)	2000

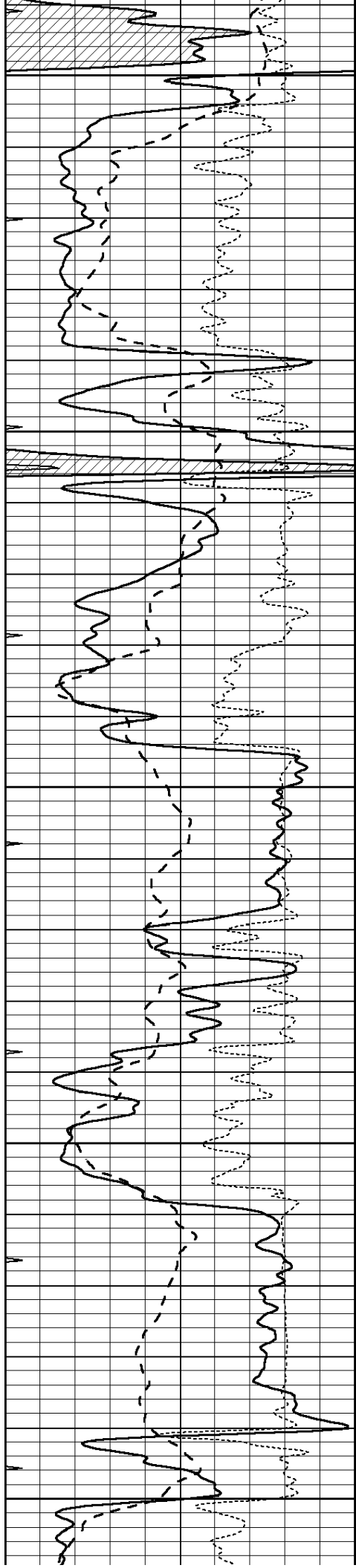


4100

4150

4200





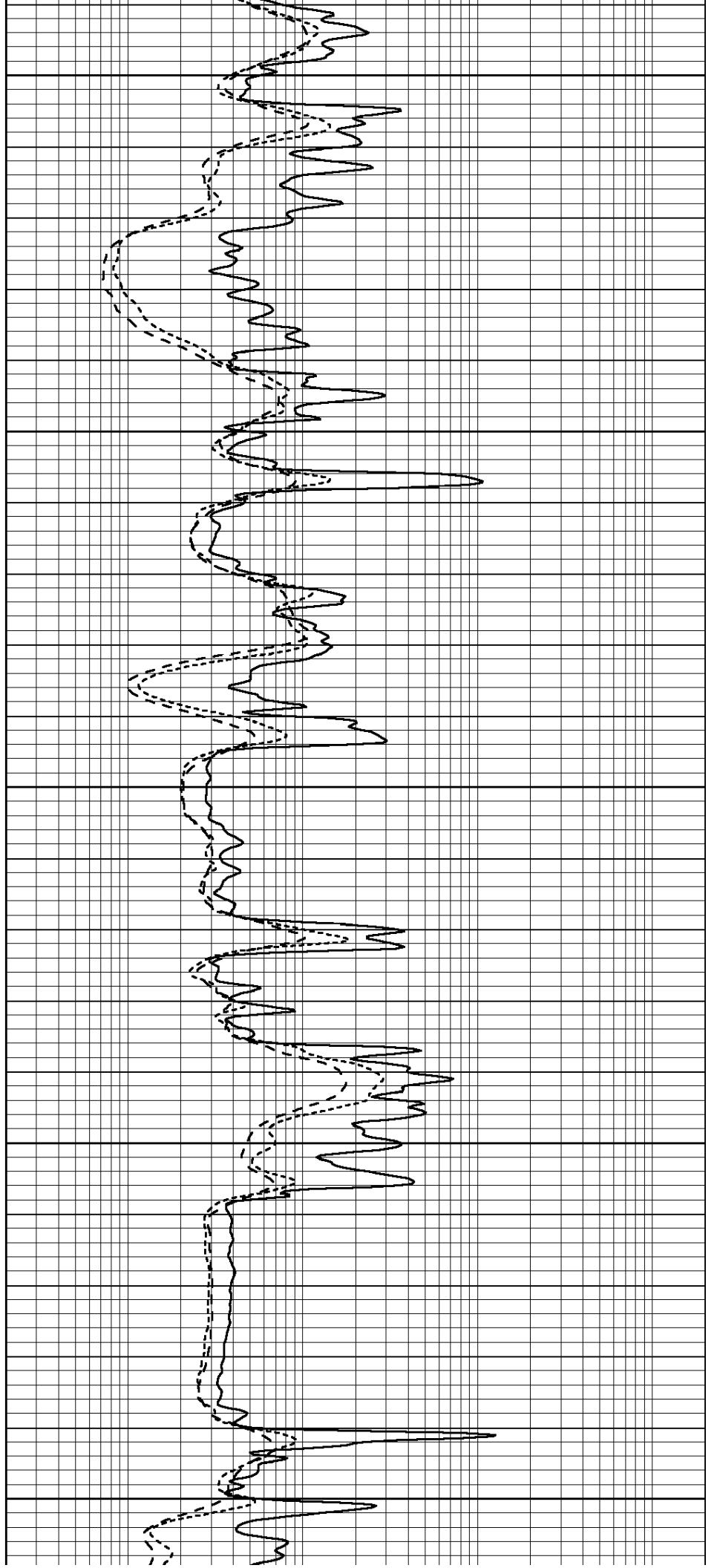
4250

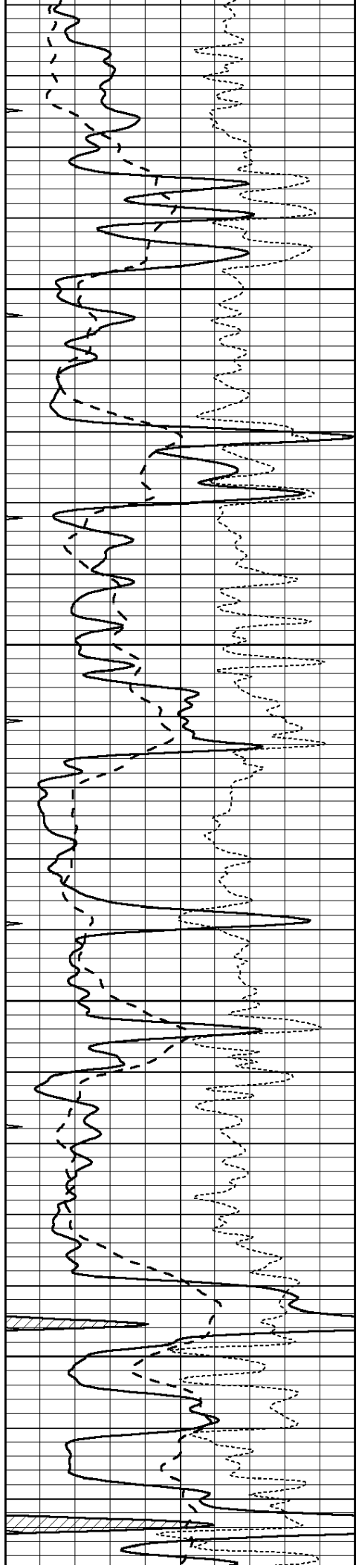
4300

4350

4400

4450



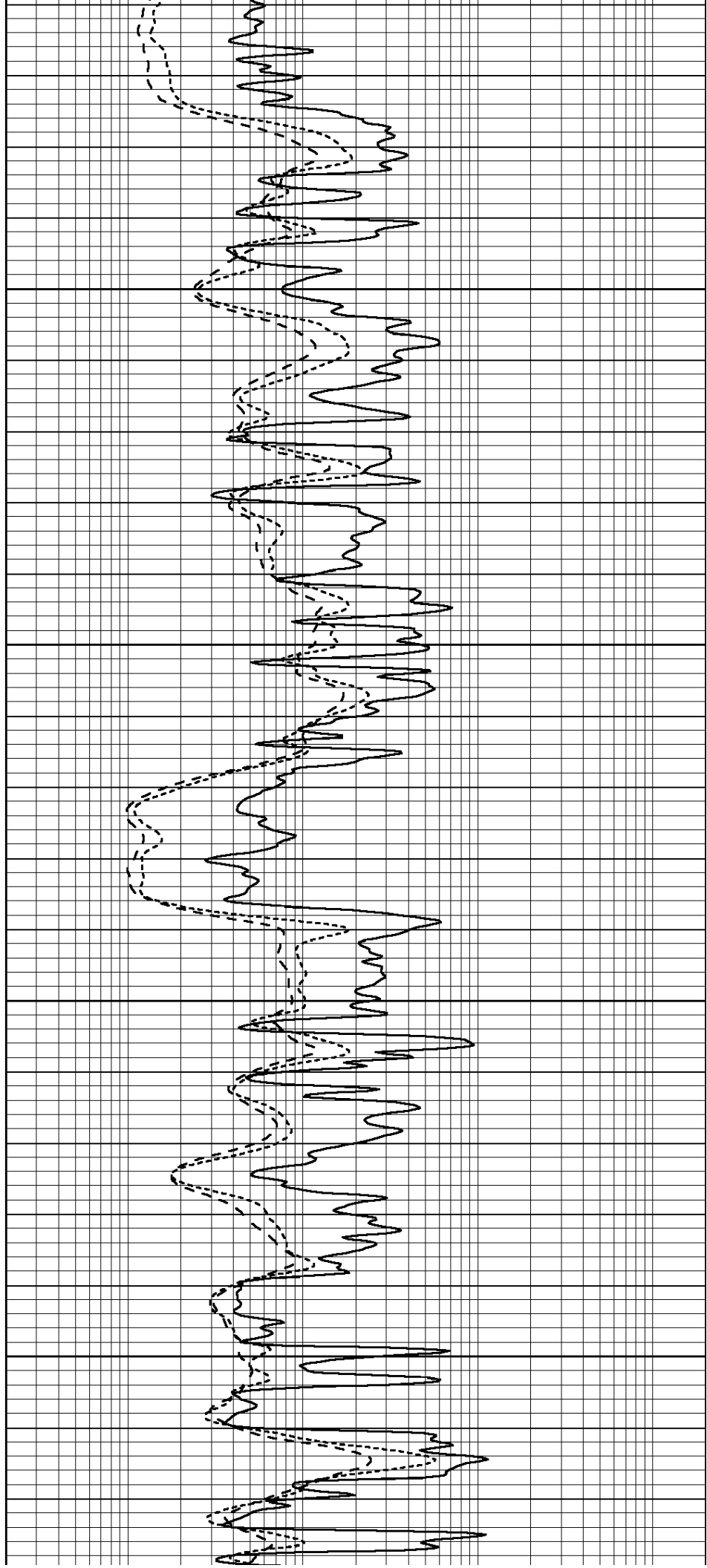


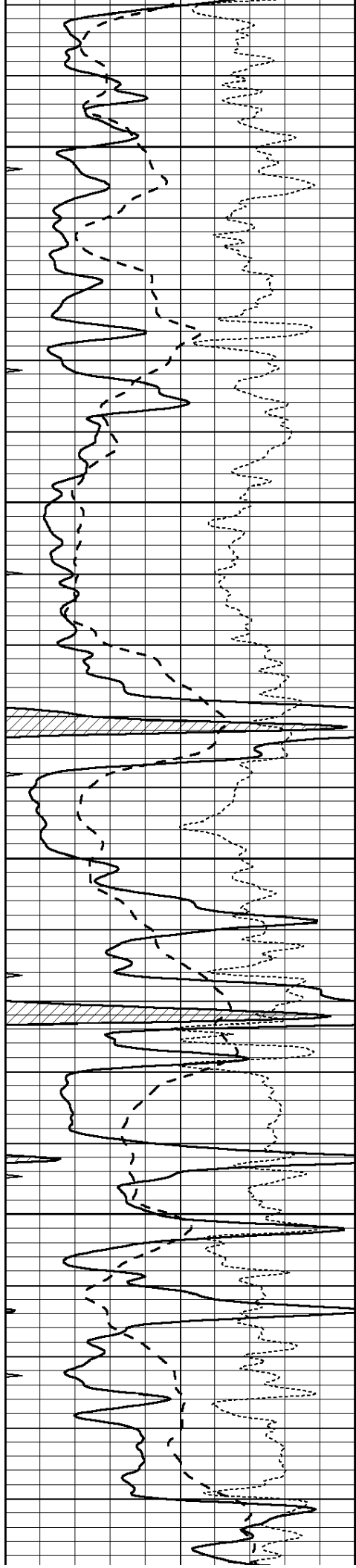
4500

4550

4600

4650



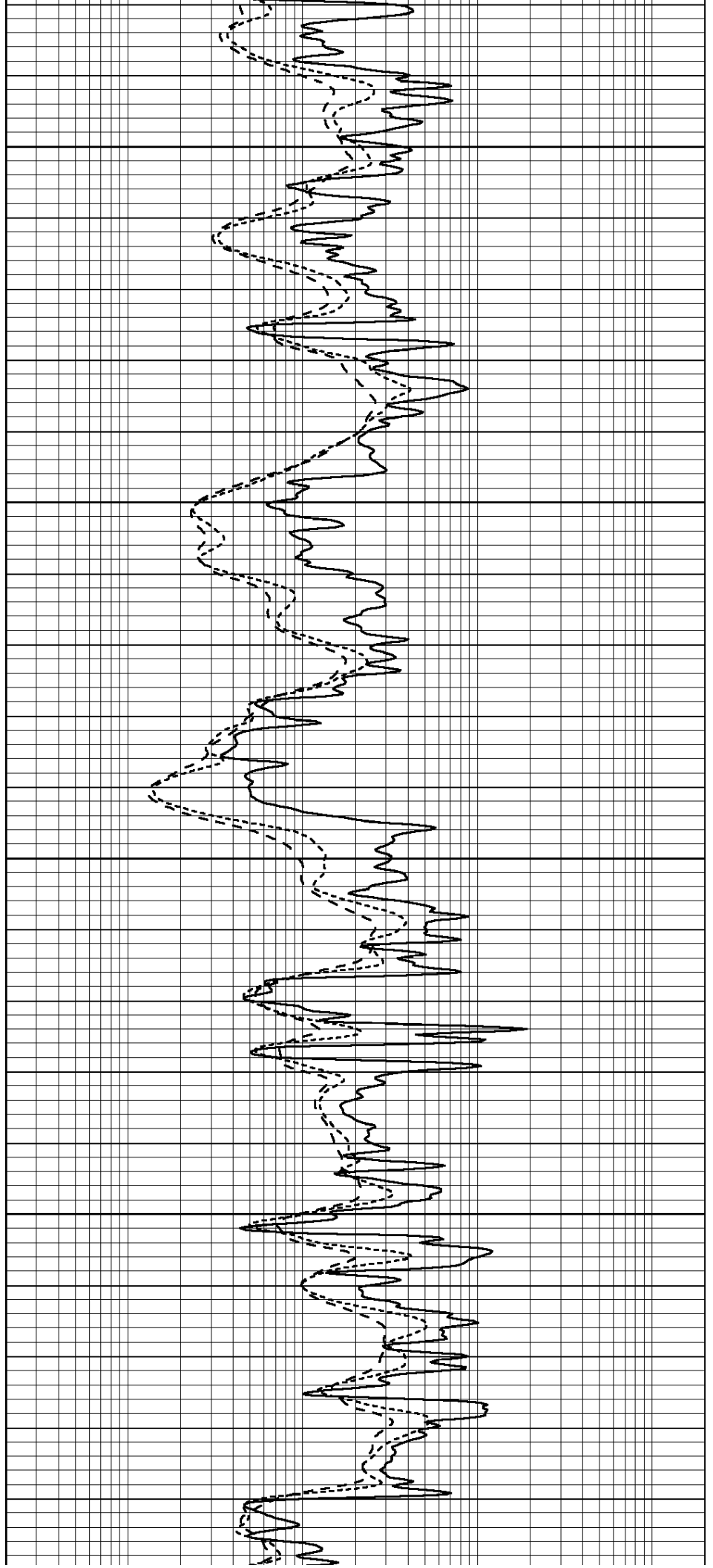


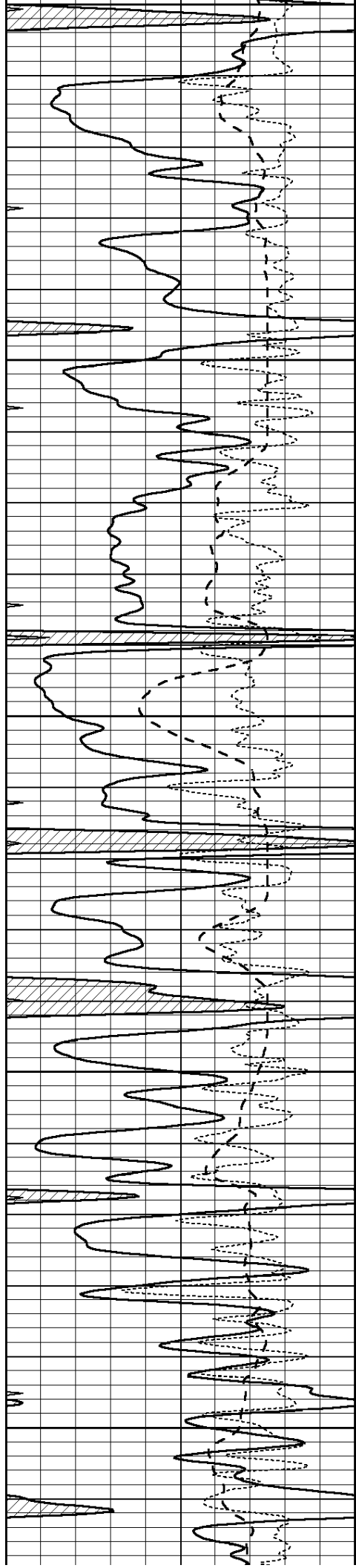
4700

4750

4800

4850





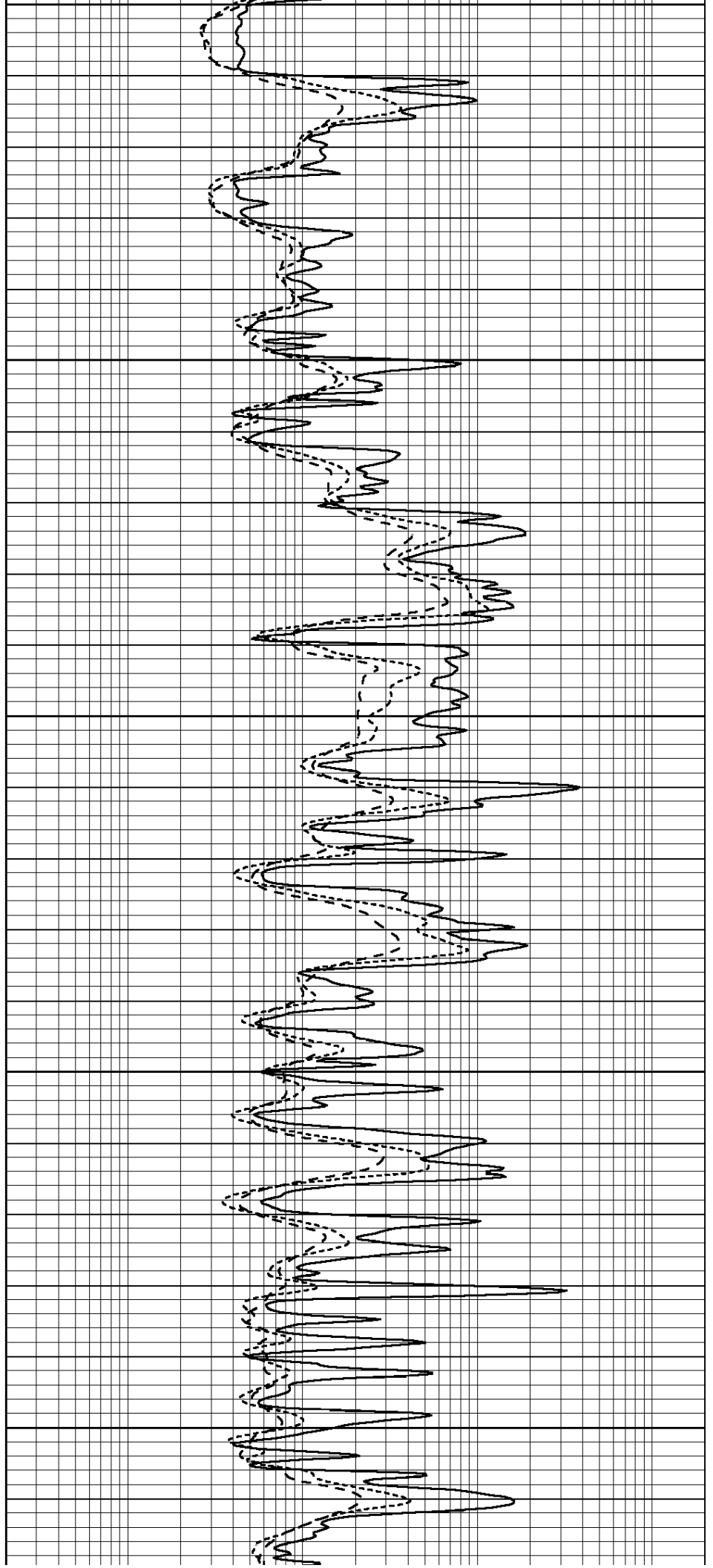
4900

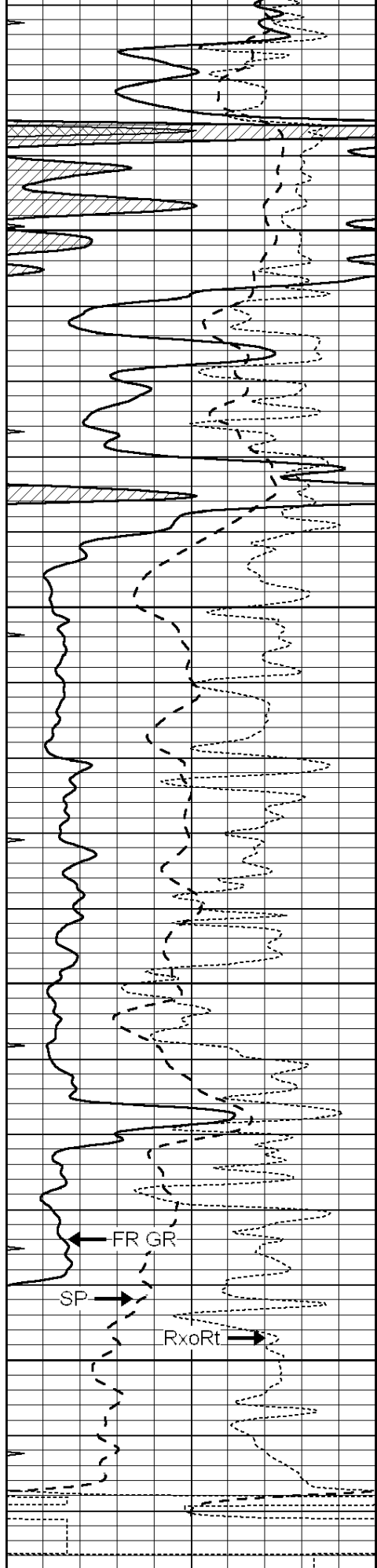
4950

5000

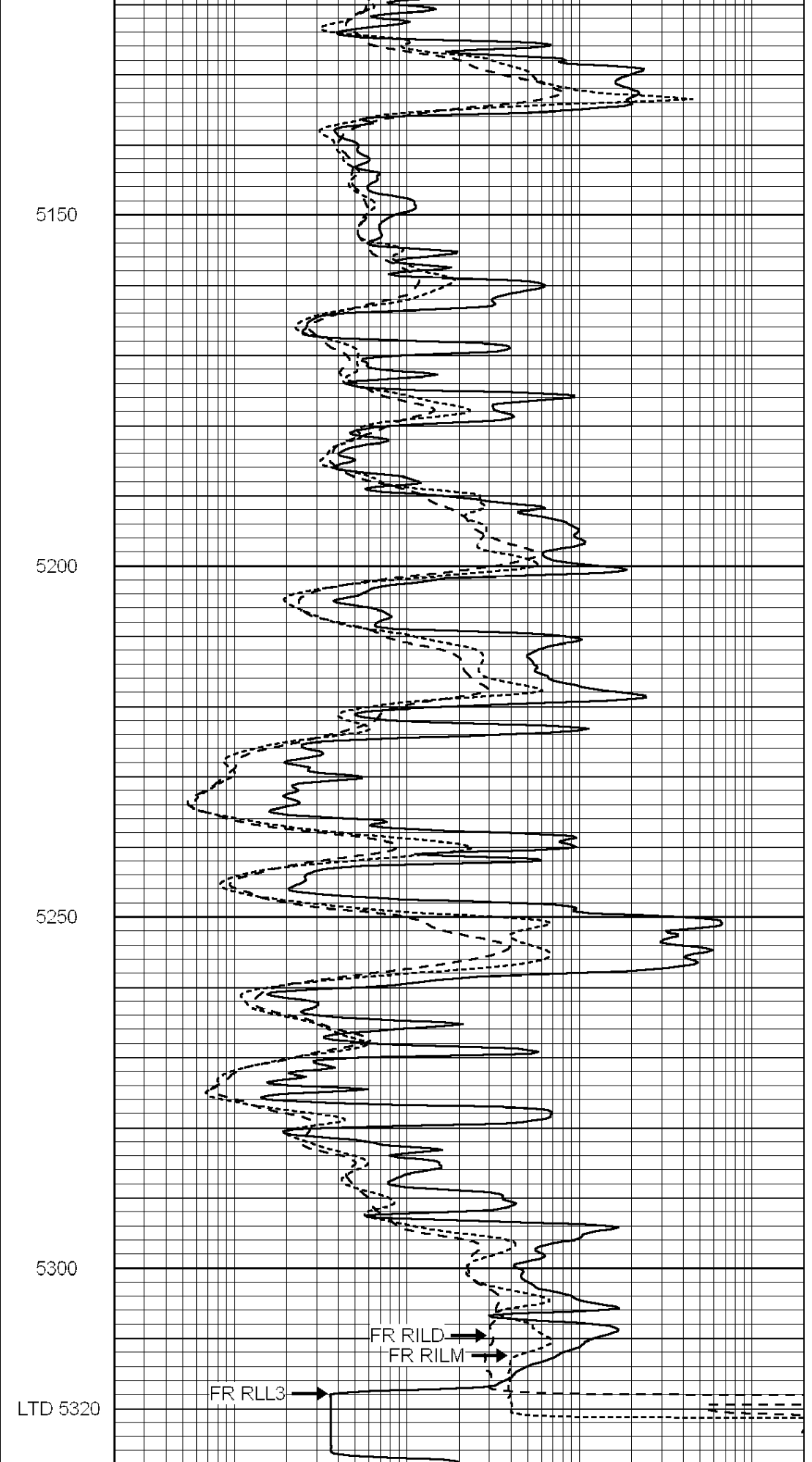
5050

5100





0 GAMMA RAY (GAPI) 150
 -100 SP (mV) 100



0.2 SHALLOW GUARD (Ohm-m) 2000
 0.2 DEEP INDUCTION (Ohm-m) 2000

-250	Rxo/Rt	50
0	MINMK	20

0.2 ----- MEDIUM INDUCTION (Ohm-m) 2000



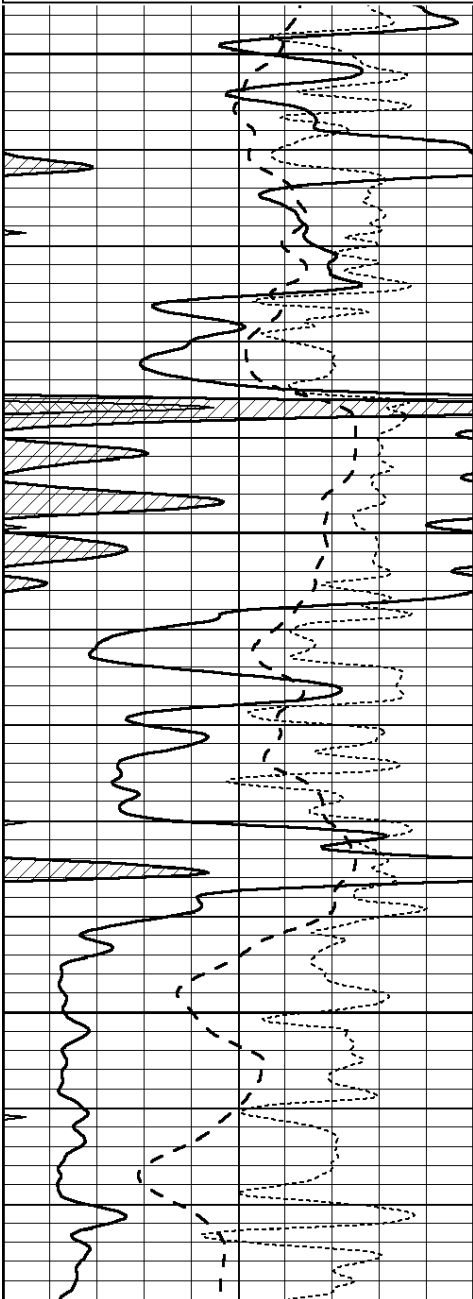
**COMPLETION
& PRODUCTION
SERVICES CO.**

REPEAT SECTION

Database File: 010726pe.db
 Dataset Pathname: pass2.2
 Presentation Format: _dil
 Dataset Creation: Sun Mar 17 06:04:53 2013 by Calc SOC 120430
 Charted by: Depth in Feet scaled 1:240

0	GAMMA RAY (GAPI)	150
-100	SP (mV)	100
-250	Rxo/Rt	50
0	MINMK	20

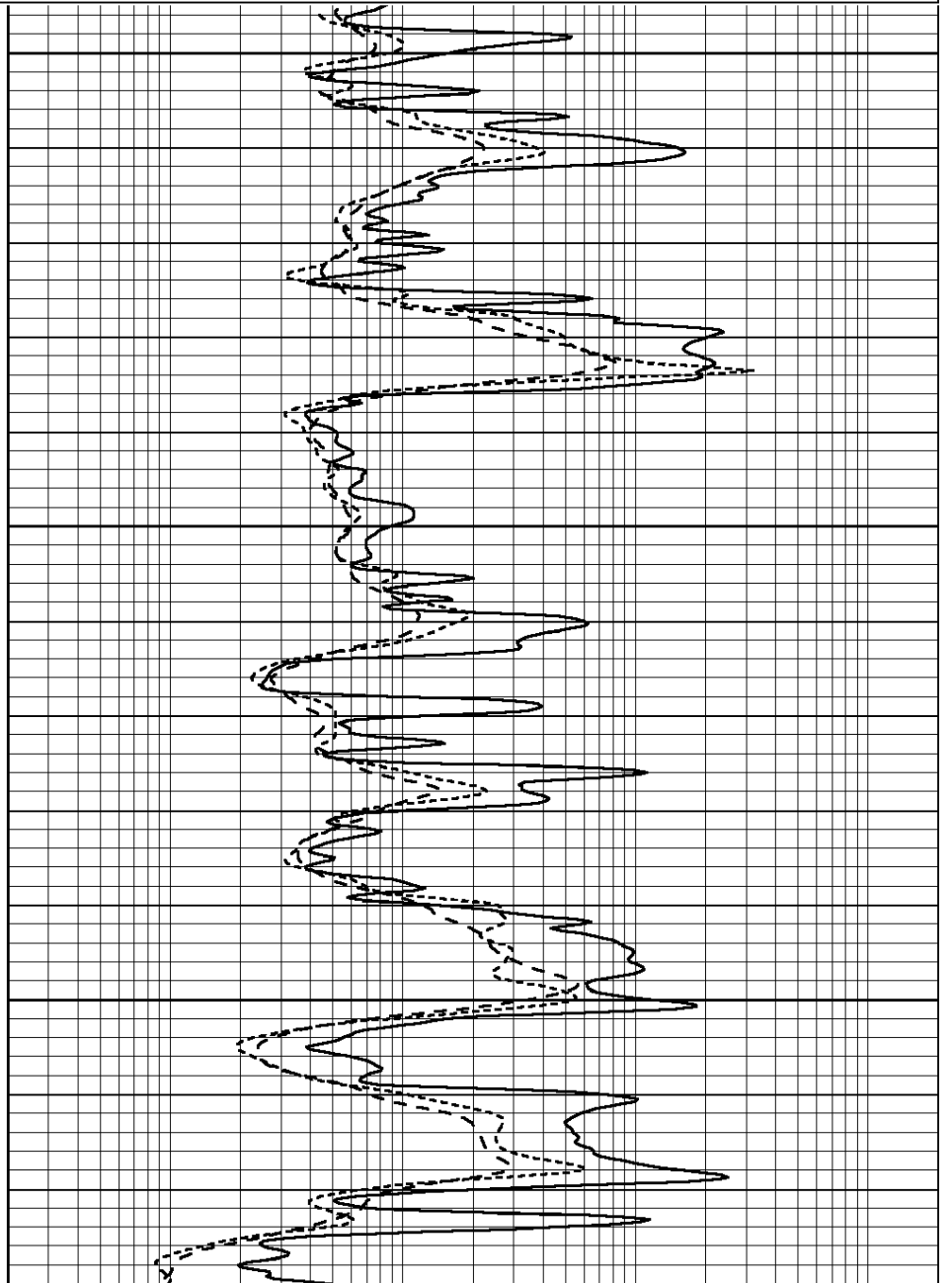
0.2	SHALLOW GUARD (Ohm-m)	2000
0.2	DEEP INDUCTION (Ohm-m)	2000
0.2	MEDIUM INDUCTION (Ohm-m)	2000

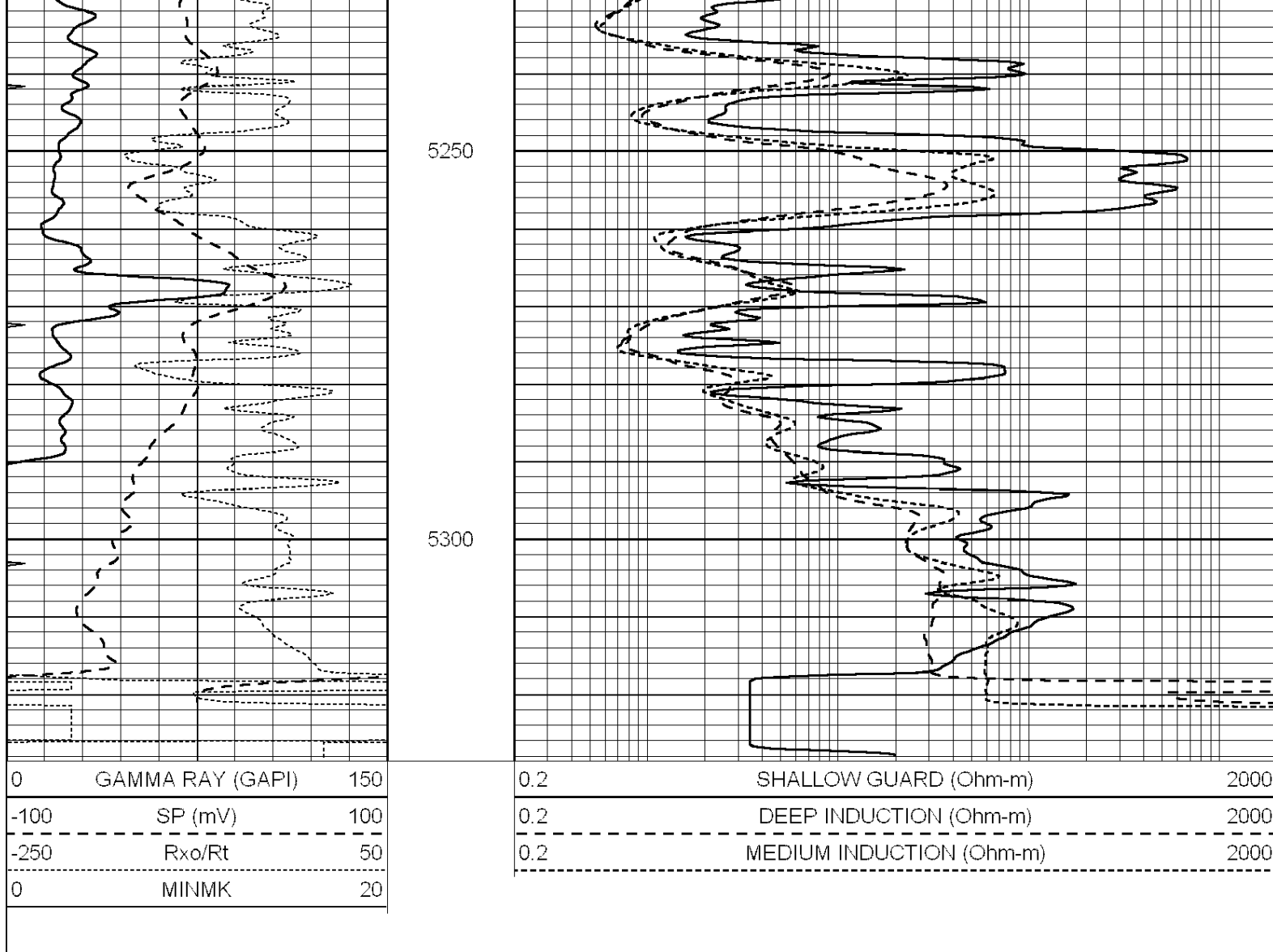


5100

5150

5200





Calibration Report

Database File: 010726pe.db
 Dataset Pathname: pass3.1
 Dataset Creation: Sun Mar 17 05:26:46 2013 by Calc SOC 120430

Dual Induction Calibration Report

Serial-Model: PROBE9-DILG
 Surface Cal Performed: Sun Mar 10 00:44:14 2013
 Downhole Cal Performed: Mon Jul 28 12:02:56 2008
 After Survey Verification Performed: Mon Jul 28 12:02:56 2008

Surface Calibration

Loop:	Readings			References			Results	
	Air	Loop	V	Air	Loop	mmho/m	m	b
Deep	-0.014	0.629	V	0.000	400.000	mmho/m	621.923	-9.000
Medium	0.039	0.728	V	0.000	464.000	mmho/m	640.000	-19.000
Internal:	Zero	Cal		Zero	Cal		m	b
Deep	0.011	0.610	V	0.000	400.000	mmho/m	667.135	-7.256
Medium	0.005	0.712	V	0.000	464.000	mmho/m	655.677	-3.102

Downhole Calibration

	Readings			References			Results	
	Zero	Cal	V	Zero	Cal	mmho/m	m	b
Deep	0.000	0.610	V	0.000	400.000	mmho/m	667.135	-7.256
Medium	0.000	0.712	V	0.000	464.000	mmho/m	655.677	-3.102

	Zero	Cal		Zero	Cal		m	b
Deep	0.000	0.000	mmho/m	14.508	388.384	mmho/m	1.000	0.000
Medium	0.000	0.000	mmho/m	166.367	504.400	mmho/m	1.000	0.000
LL3		7.500	V		1400.000	Ohm-m		
		0.000	V		20.000	Ohm-m		
		-7.200	V		4000.000	mmho-m		

After Survey Verification								
	Readings			Targets			Results	
	Zero	Cal		Zero	Cal		m'	b'
Deep	0.000	0.000	mmho/m	0.000	0.000	mmho/m	0.000	0.000
Medium	0.000	0.000	mmho/m	0.000	0.000	mmho/m	0.000	0.000
LL3		1.000	Ohm-m		1.000	Ohm-m		
		0.000	Ohm-m		0.000	Ohm-m		
		1.000	mmho-m		1.000	mmho-m		

Litho Density Calibration Report
Serial: 006 Model: PRB

Master Calibration		Performed Sun Aug 15 09:48:41 2010					
	Background	Magnesium	Aluminum	Sandstone			
Window 1	1686.6	11612.8	3932.0	12718.8			cps
Window 2	1531.4	9204.7	3267.8	9851.9			cps
Window 3	1198.3	4733.6	1952.5	4920.6			cps
Window 4	317.3	321.2	325.9	303.6			cps
Long Space	0.0	7673.3	1736.4	8320.4			cps
Short Space	1.7	2548.5	1657.2	2628.8			cps
Rho		1.7100	2.5900	1.3800			g/cc
Pe		0.0000	2.5700	1.5500			
Rib Angle	: 43.8	Rib Slope	: 0.961	Density/Spine Ratio			: 0.569
Spine Angle	: 73.8	Spine Slope	: 3.453	Spine Intercept			: -18.1

Before Survey Verification		Performed Wed Dec 31 18:00:00 1969					
	Background	Magnesium	Aluminum	Sandstone			
Window 1	0.0	0.0	0.0	0.0			cps
Window 2	0.0	0.0	0.0	0.0			cps
Window 3	0.0	0.0	0.0	0.0			cps
Window 4	0.0	0.0	0.0	0.0			cps
Long Space	0.0	0.0	0.0	0.0			cps
Short Space	0.0	0.0	0.0	0.0			cps
Measured Rho		0.0000	0.0000	0.0000			g/cc
Measured Correction		0.0000	0.0000	0.0000			g/cc
Measured Pe			0.0000	0.0000			

After Survey Verification		Performed Wed Dec 31 18:00:00 1969					
	Background	Magnesium	Aluminum	Sandstone			
Window 1	0.0	0.0	0.0	0.0			cps
Window 2	0.0	0.0	0.0	0.0			cps
Window 3	0.0	0.0	0.0	0.0			cps
Window 4	0.0	0.0	0.0	0.0			cps
Long Space	0.0	0.0	0.0	0.0			cps
Short Space	0.0	0.0	0.0	0.0			cps
Measured Rho		0.0000	0.0000	0.0000			g/cc
Measured Correction		0.0000	0.0000	0.0000			g/cc
Measured Pe			0.0000	0.0000			

Compensated Neutron Calibration Report

Serial Number: 070808
 Tool Model: Probe

PRE-SURVEY VERIFICATION

Detector	Readings	Measured	Target
Short Space	cps		
Long Space	cps	pu	pu

POST-SURVEY VERIFICATION

Detector	Readings	Measured	Target
Short Space	cps		
Long Space	cps	pu	pu

Gamma Ray Calibration Report

Serial Number: 070559
 Tool Model: OPEN_GR
 Performed: Sun Mar 10 00:43:54 2013

Calibrator Value: 1.0 GAPI

Background Reading: 0.0 cps
 Calibrator Reading: 1.0 cps

Sensitivity: 0.3500 GAPI/cps