



Pioneer Energy Services

# Microresistivity Log

15-065-23942-00-00

API No.

Company **H&C Oil Operating, Inc.**

Well **Minium #26-1**

Field **Wildcat**

County **Graham** State

**Kansas**

Location

890' FSL & 1650' FWL

Other Services  
CNL/CDL  
DIL

Sec: 26

Twp: 8S

Rge: 25W

Elevation

K.B. 2393

D.F. 2388

G.L. 2388

Permanent Datum Ground Level

Log Measured From Kelly Bushing

Drilling Measured From Kelly Bushing

5 Ft. Above Perm. Datum

Date

6/16/2013

Run Number

Two

Depth Driller

3980

Depth Logger

3982

Bottom Logged Interval

3981

Top Log Interval

3350

Casing Driller

8.625 @ 263

Casing Logger

263

Bit Size

7.875

Type Fluid in Hole

Chemical

Salinity, ppm CL

1200

Density / Viscosity

9.4 61

pH / Fluid Loss

10.0 7.8

Source of Sample

Flowline

Rm @ Meas. Temp

1.10 @ 74

Rmf @ Meas. Temp

0.83 @ 74

Rmc @ Meas. Temp

1.49 @ 74

Source of Rmf / Rmc

Charts

Rm @ BHT

0.64 @ 128

Operating Rig Time

4 Hours

Max Rec. Temp. F

128

Equipment Number

91

Location

Hays

Recorded By

D. Schmidt

Witnessed By

Marc Downing

<<< Fold Here >>>

All interpretations are opinions based on inferences from electrical or other measurements and we cannot and do not guarantee the accuracy or correctness of any interpretation, and we shall not, except in the case of gross or willful negligence on our part, be liable or responsible for any loss, costs, damages, or expenses incurred or sustained by anyone resulting from any interpretation made by any of our officers, agents or employees. These interpretations are also subject to our general terms and conditions set out in our current Price Schedule.

### Comments

Thank you for using Pioneer Energy Services  
www.pioneerenergy.com  
785 625 3858

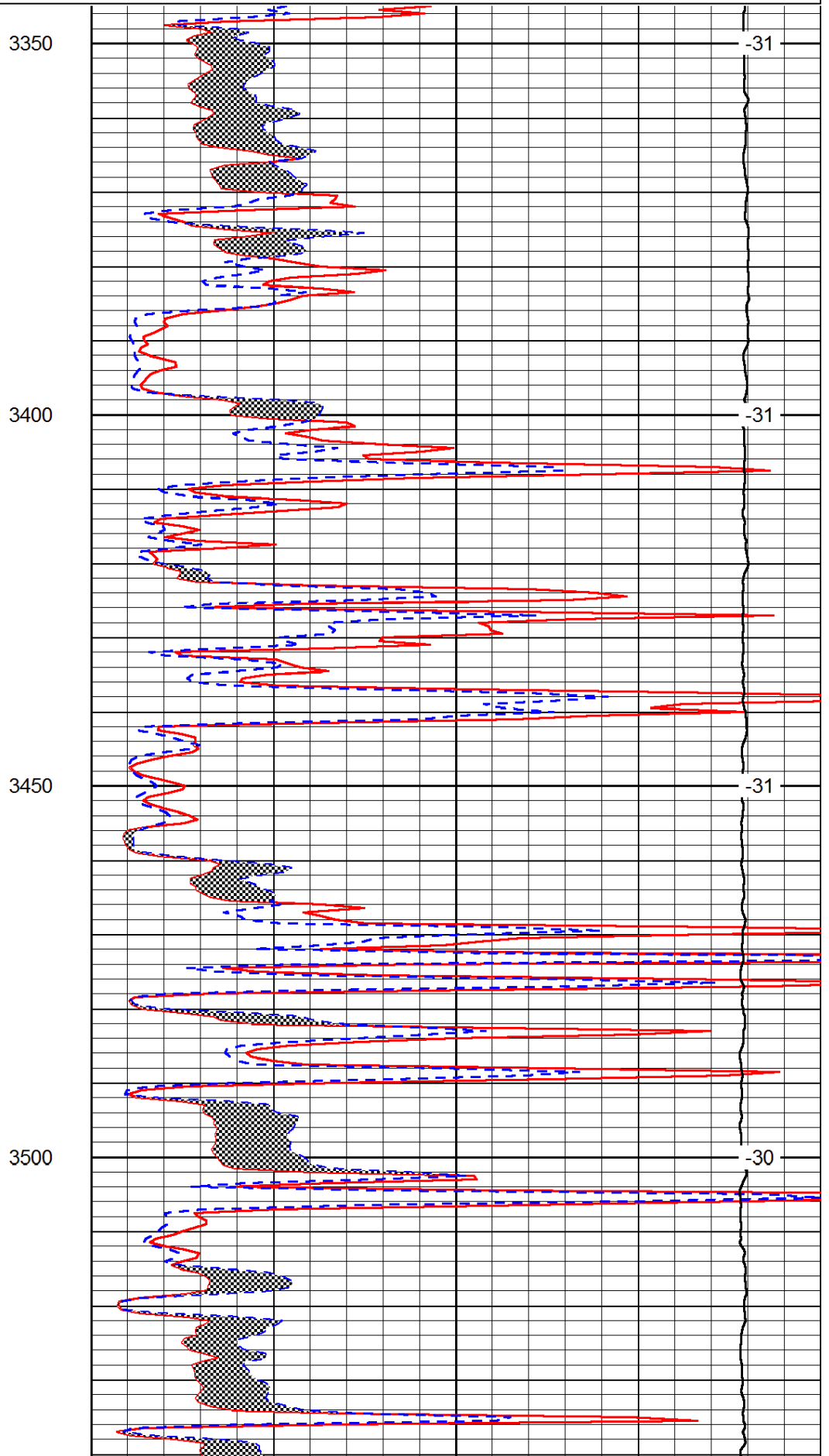
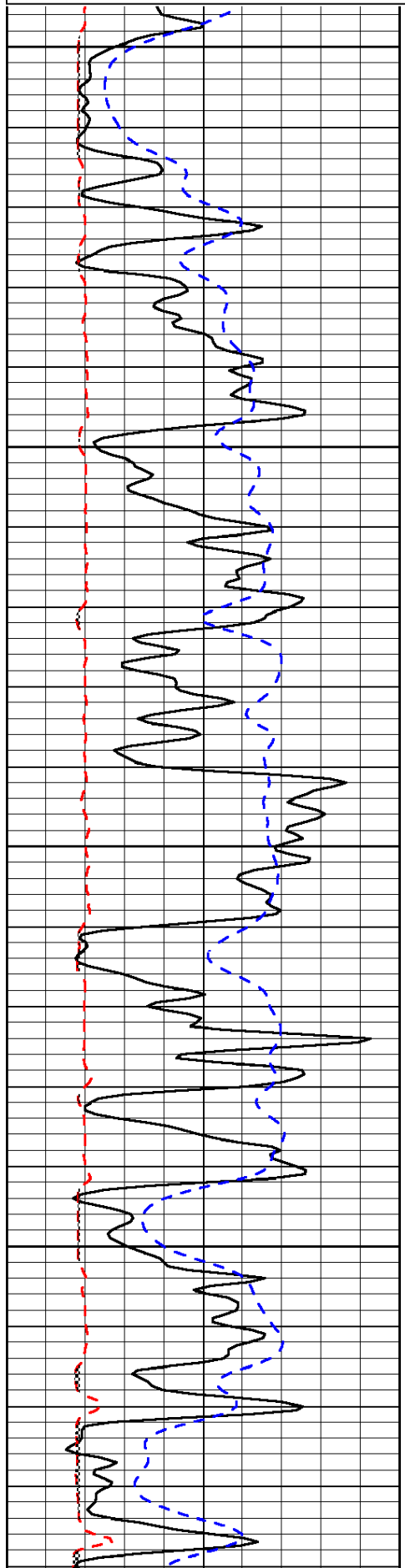
Morland,  
2 South, East & North into

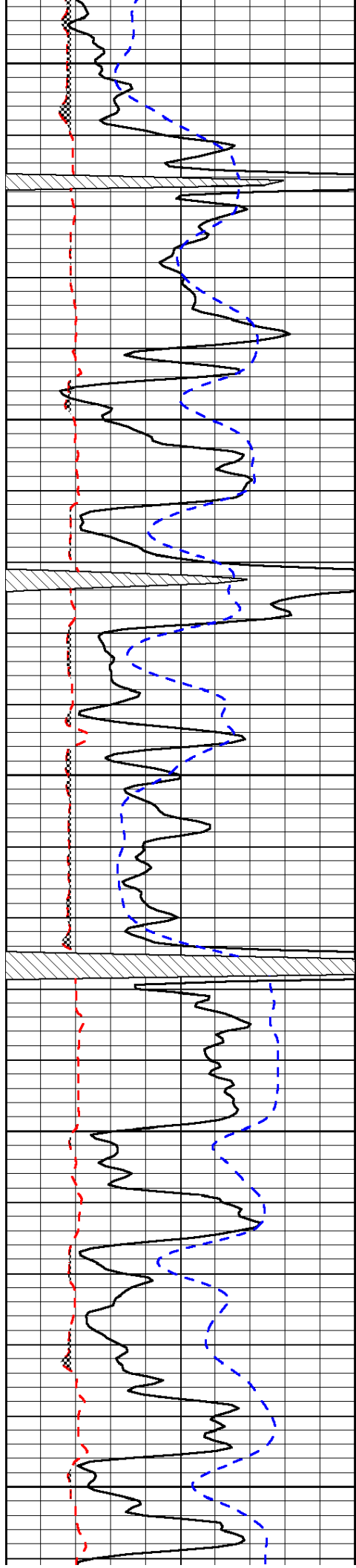
Database File: c:\warrior\data\h&c\_minium #26-1\h&c\_061613hd1.db  
Dataset Pathname: dil\hcstck1  
Presentation Format: micro  
Dataset Creation: Mon Jun 17 00:58:32 2013  
Charted by: Depth in Feet scaled 1:240

0	Gamma Ray	150
6	Micro Log Caliper (GAPI)	16
-200	SP (mV)	0

0	Micro Inverse 1 X 1	40
0	Micro Normal 2"	40
15000	Line Weight	0

LSPD





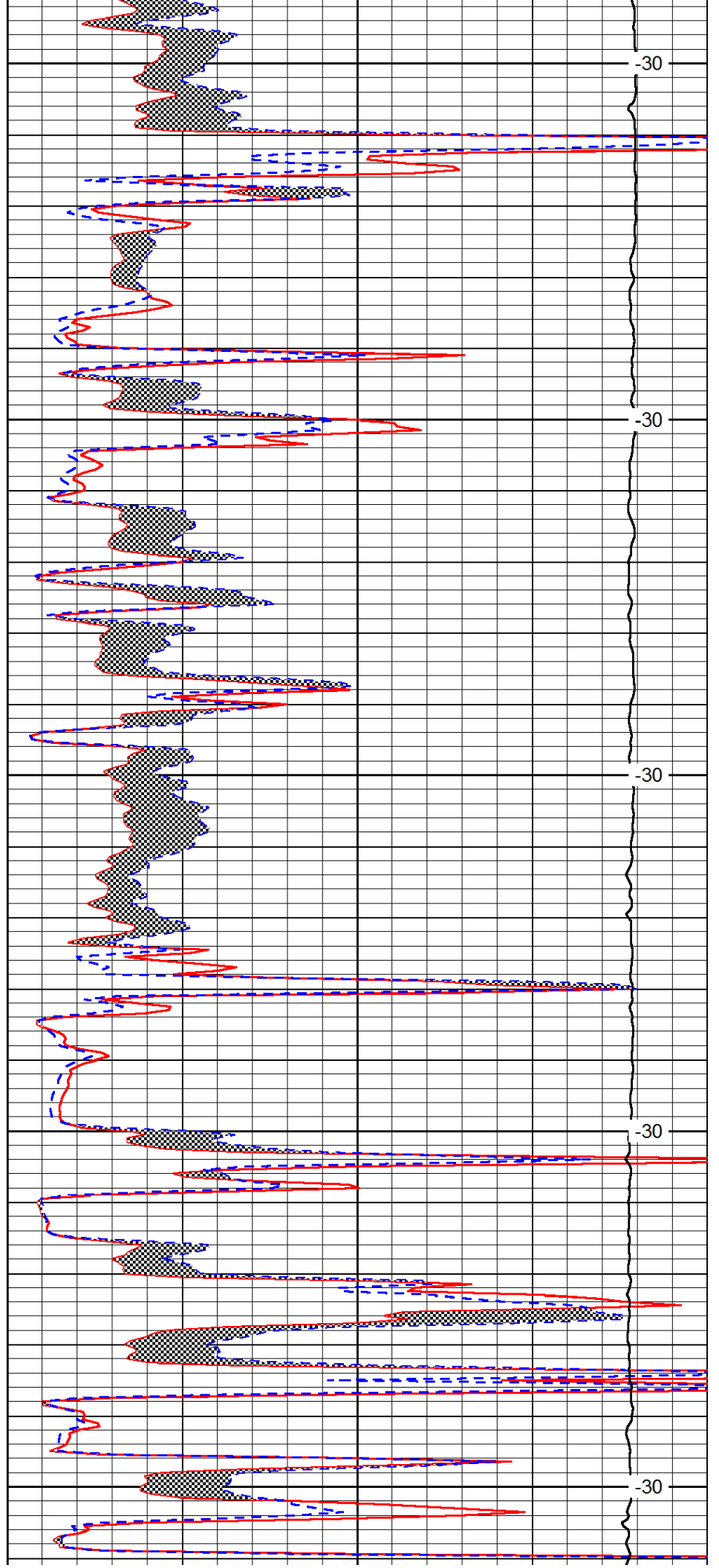
3550

3600

3650

3700

3750



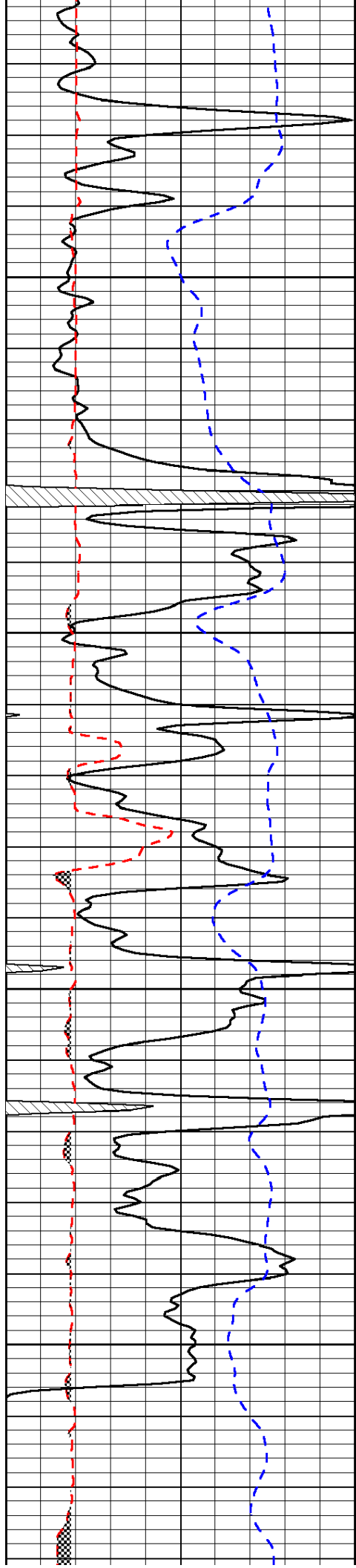
-30

-30

-30

-30

-30

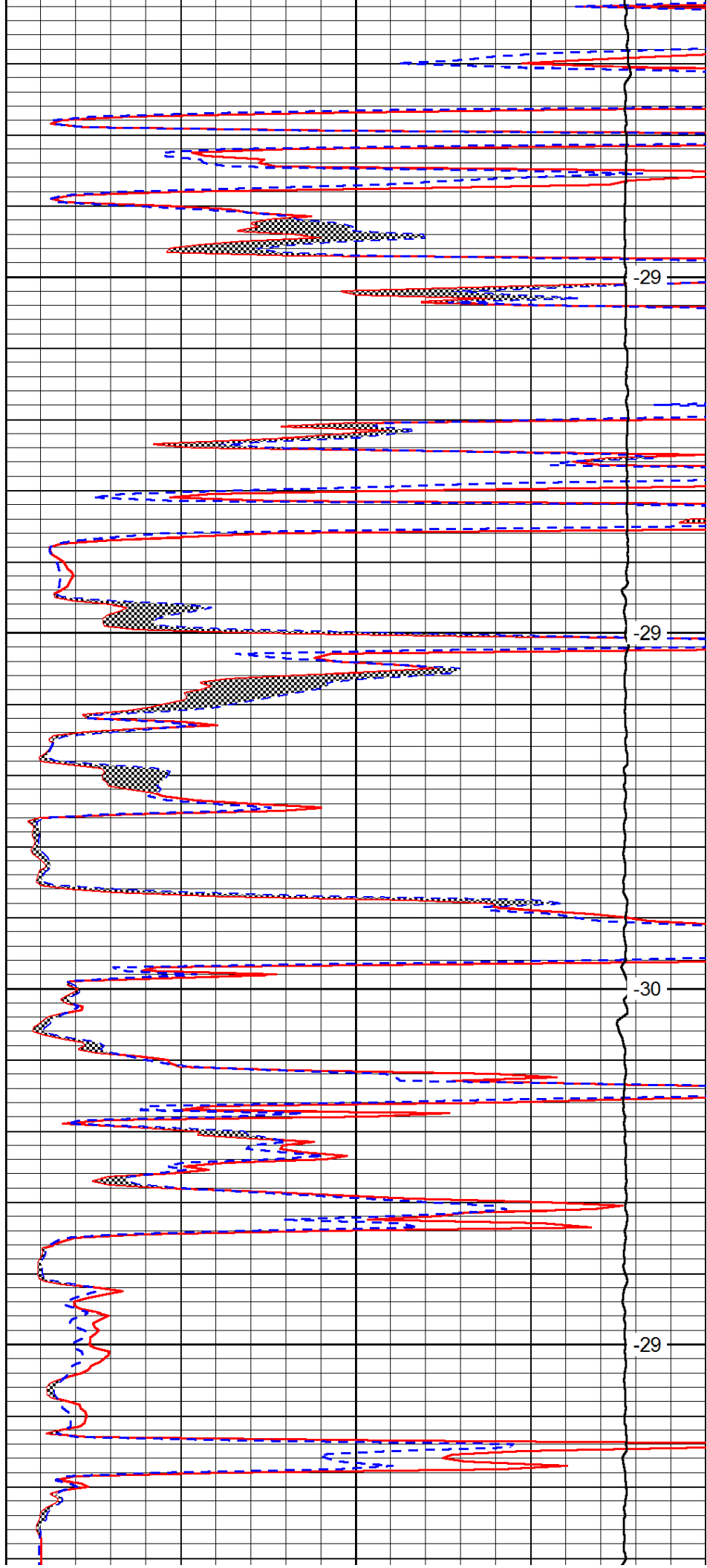


3800

3850

3900

3950

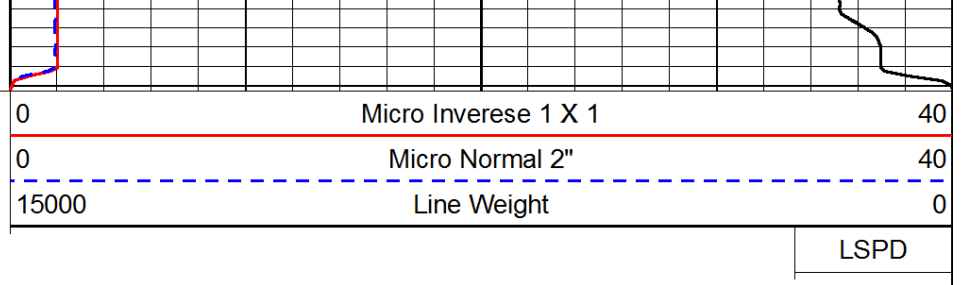
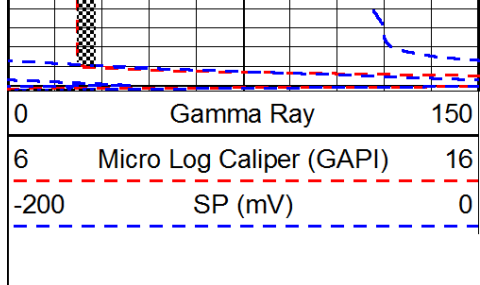


-29

-29

-30

-29



LSPD