



Pioneer Energy Services

Dual Compensated Porosity Log

15-065-23942-00-00

API No.

Company **H&C Oil Operating, Inc.**

Well **Minium #26-1**

Field **Wildcat**

County **Graham**

State **Kansas**

Location

890' FSL & 1650' FWL

Other Services
DIL
MEL

Sec: **26**

Twp: **8S**

Rge: **25W**

Elevation

K.B. 2393

D.F. 2388

G.L. 2388

Ground Level
Elevation 2388

Kelly Bushing
5 Ft. Above Perm. Datum

Drilling Measured From
Kelly Bushing

Date **6/16/2013**

Run Number **One**

Type Log **CNL / CDL**

Depth Driller **3980**

Depth Logger **3982**

Bottom Logged Interval **3961**

Top Logged Interval **3350**

Type Fluid In Hole **Chemical**

Salinity, PPM CL **1200**

Density **9.4**

Level **Full**

Max. Rec. Temp. F **128**

Operating Rig Time **4 Hours**

Equipment -- Location **91 Hays**

Recorded By **D. Schmidt**

Witnessed By **Marc Downing**

Borehole Record

Casing Record

Run No.	Bit	From	To	Size	Wgt.	From	To
1	12.25	00	263	8.625	24#	00	263
2	7.875	263	3980				

<<< Fold Here >>>

All interpretations are opinions based on inferences from electrical or other measurements and we cannot and do not guarantee the accuracy or correctness of any interpretation, and we shall not, except in the case of gross or willful negligence on our part, be liable or responsible for any loss, costs, damages, or expenses incurred or sustained by anyone resulting from any interpretation made by any of our officers, agents or employees. These interpretations are also subject to our general terms and conditions set out in our current Price Schedule.

Comments

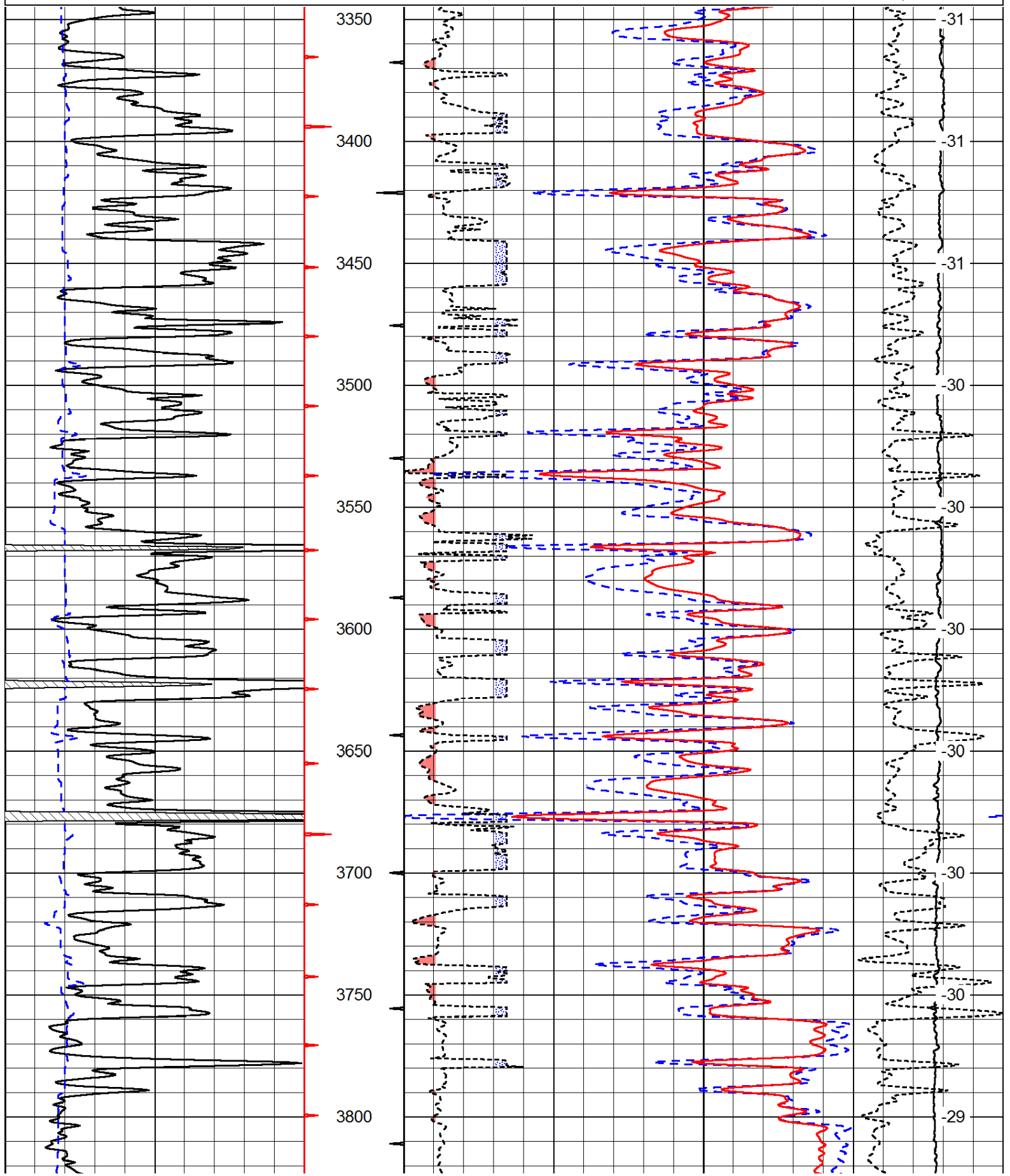
Thank you for using Pioneer Energy Services
www.pioneerenergy.com
785 625 3858

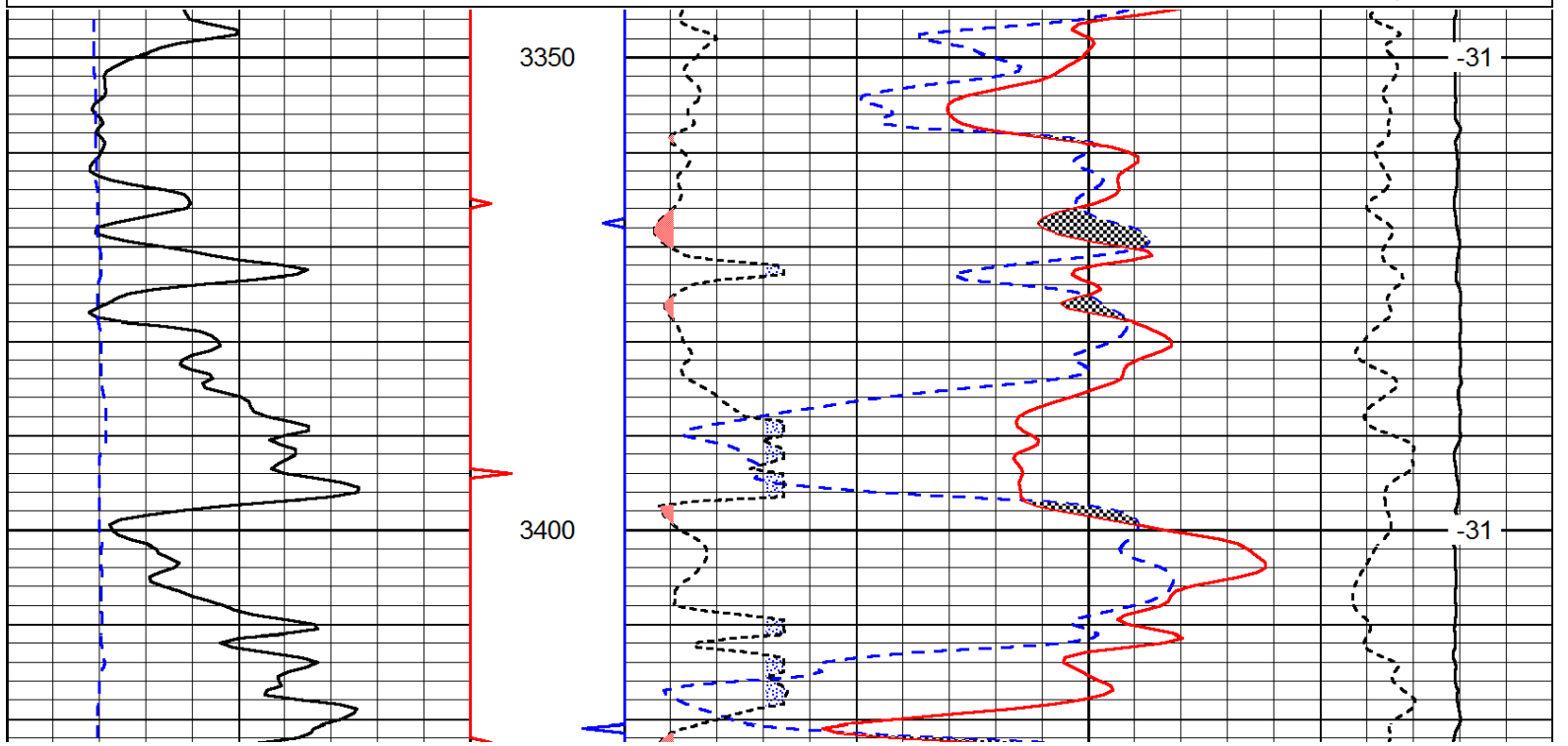
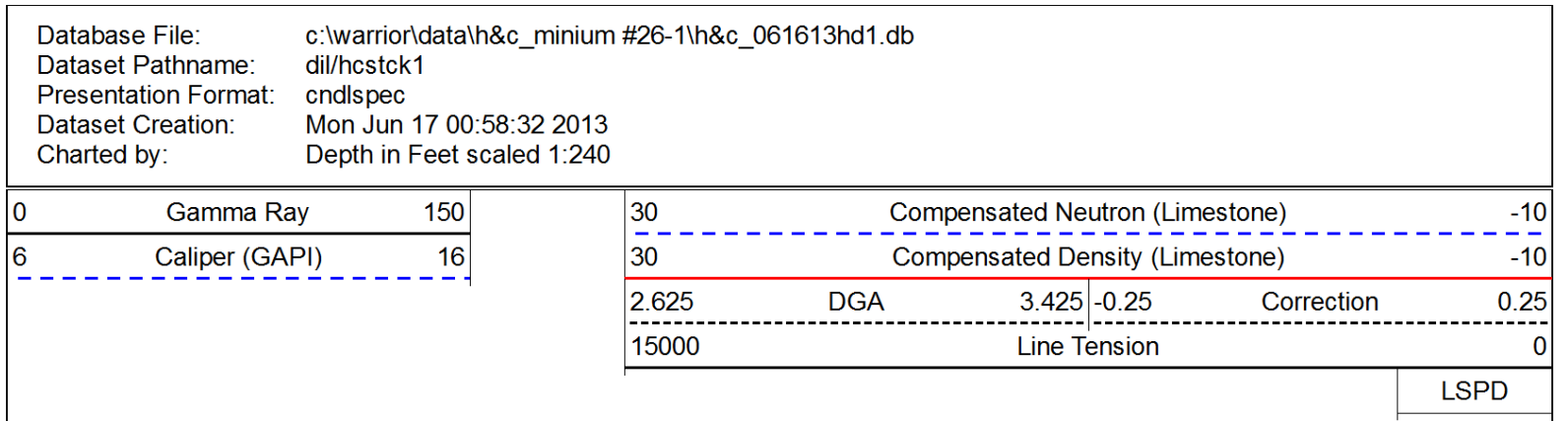
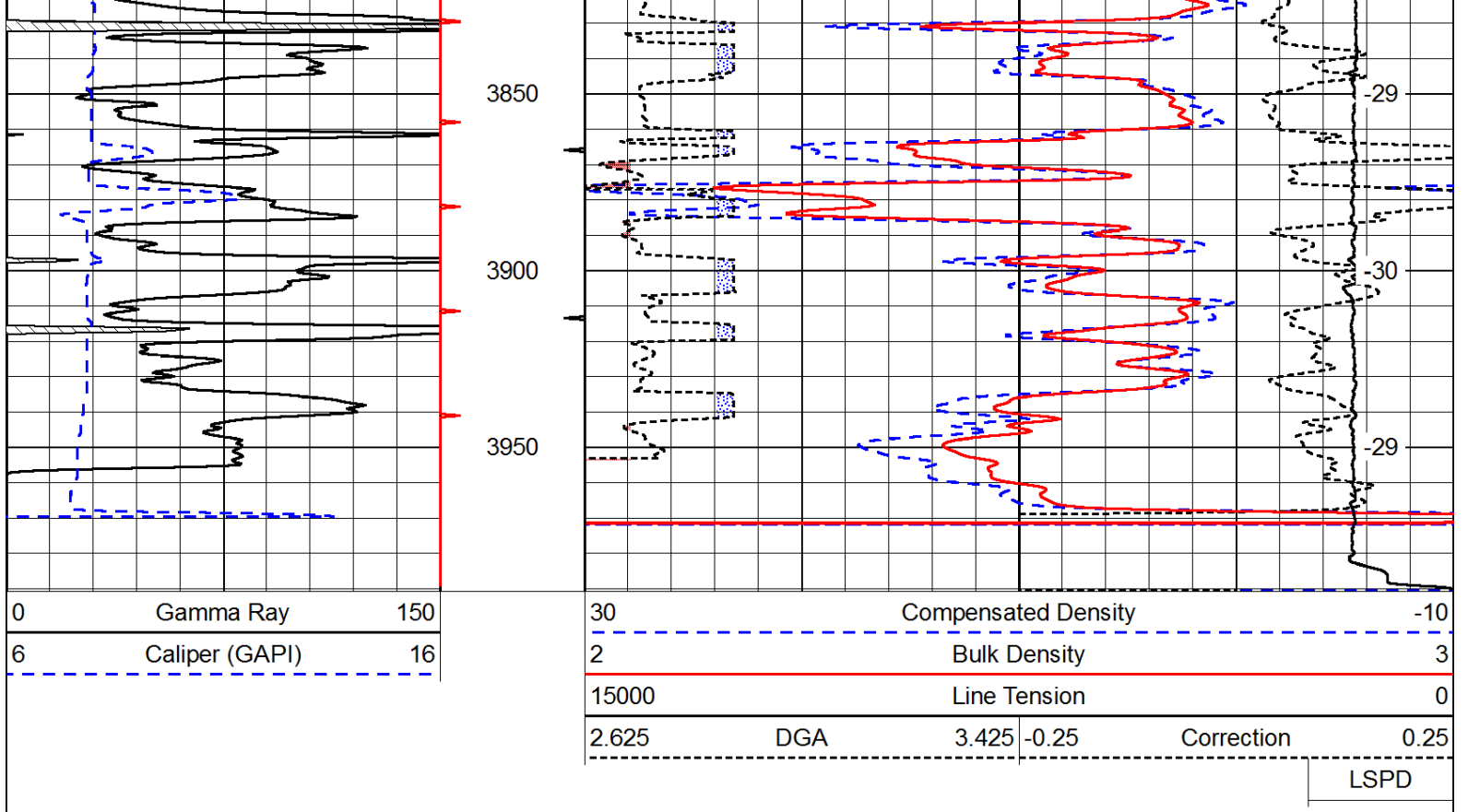
Morland,
2 South, East & North into

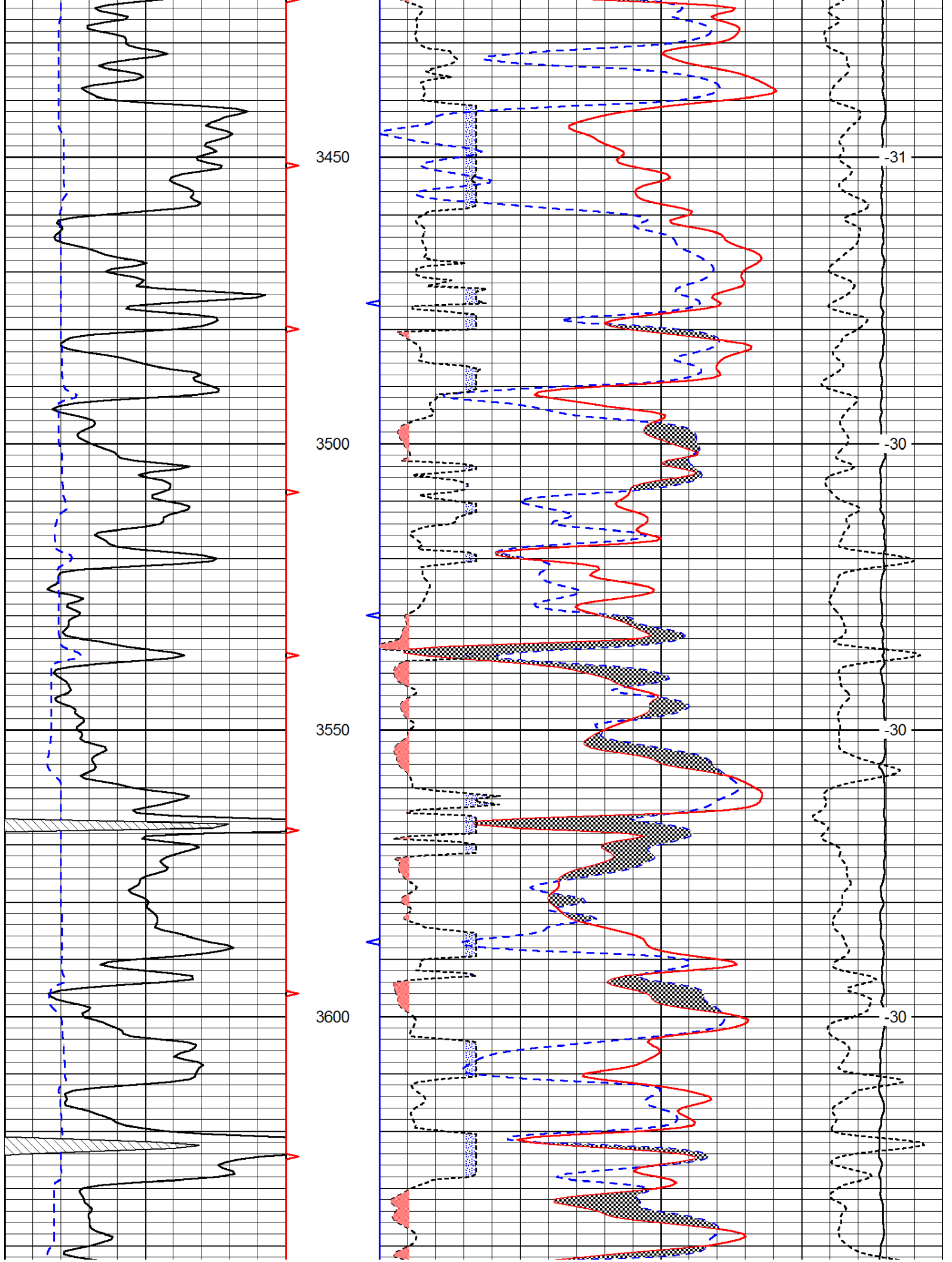
Database File: c:\warrior\data\h&c_minium #26-1\h&c_061613hd1.db
 Dataset Pathname: dil/hcstck1
 Presentation Format: cdl
 Dataset Creation: Mon Jun 17 00:58:32 2013
 Charted by: Depth in Feet scaled 1:600

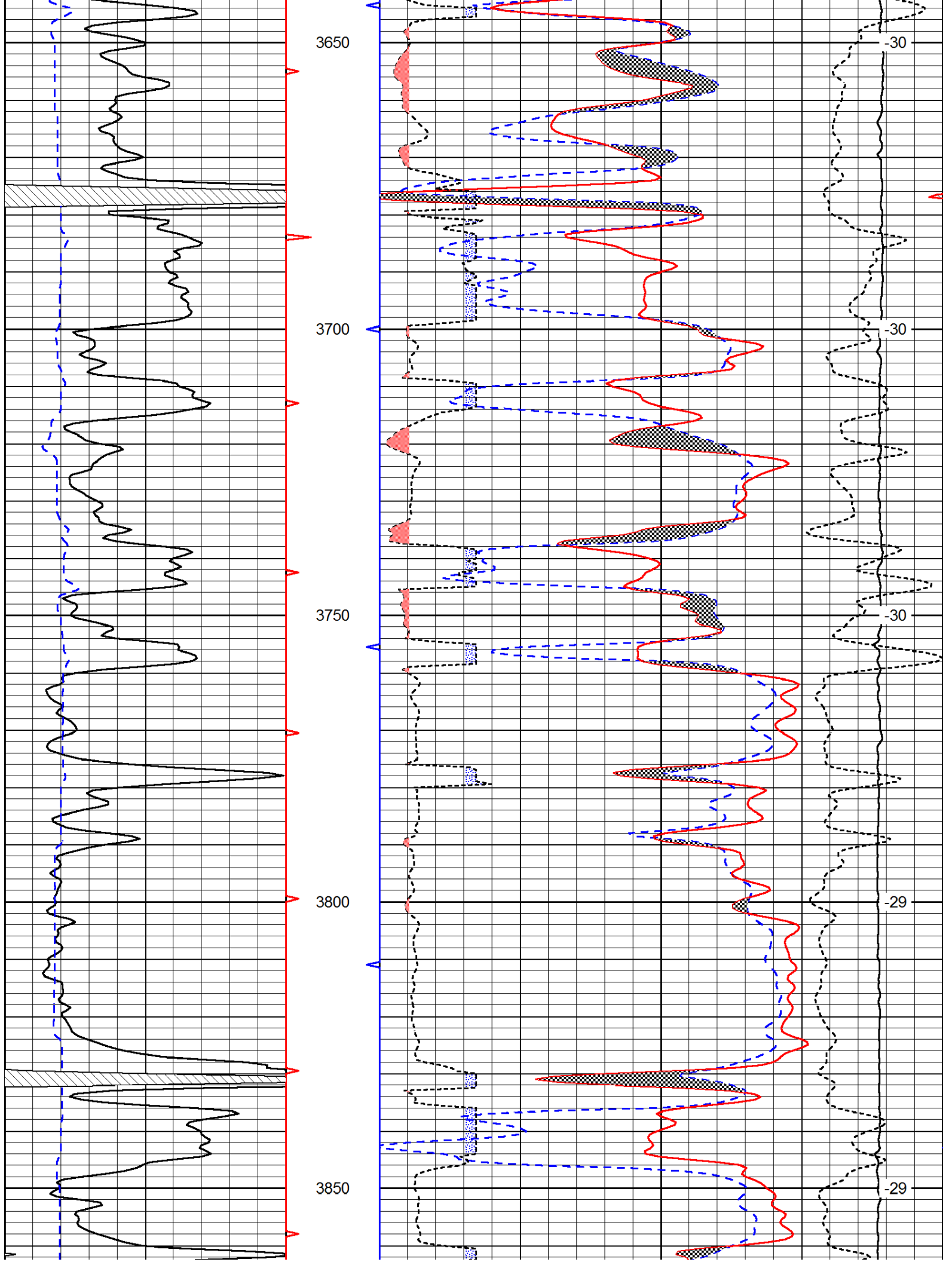
0	Gamma Ray	150
6	Caliper (GAPI)	16

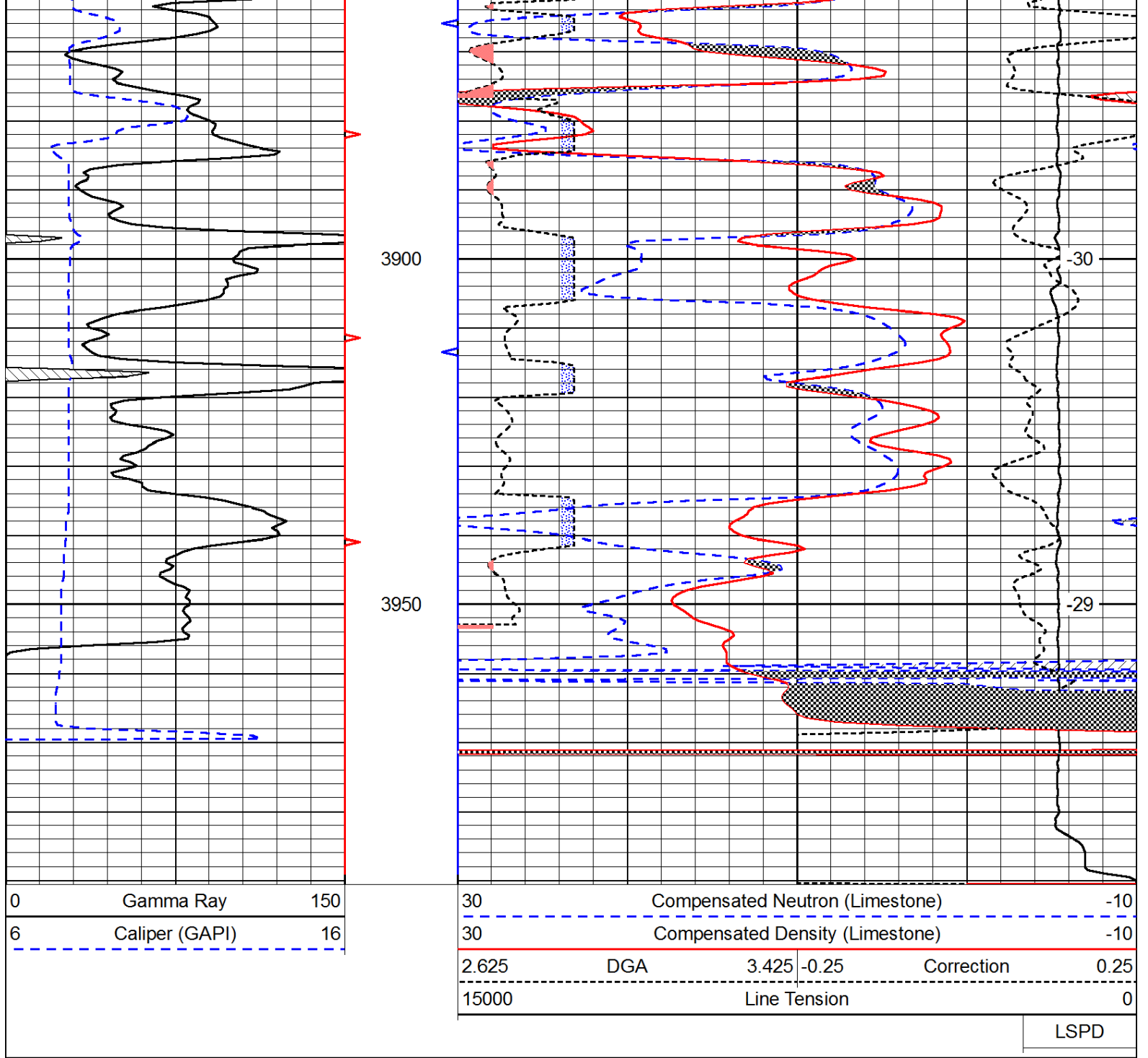
30	Compensated Density		-10
2	Bulk Density		3
15000	Line Tension		0
2.625	DGA	3.425 -0.25	Correction 0.25
LSPD			











LSPD