



Pioneer Energy Services

Dual Compensated Porosity Log

API No.

15-109-21,886-00-00

Company **Murfin Drilling Company, Inc.**

Well **WWWMM 2 - 4**

Field **Logan**

County **Logan** State **Kansas**

Location **N2 S2 NE SE
1735' FSL & 660' FEL**

Sec: **4** Twp: **13 S** Rge: **32 W**

Ground Level **Elevation 3040**

Log Measured From **Kelly Bushing** 11 Ft. Above Perm. Datum

Drilling Measured From **Kelly Bushing**

Other Services
DIL
MEI/BHCS
Elevation
K.B. 3051
D.F.
G.L. 3040

Date **4/14/2013**

Run Number **One**

Type Log **CNL / CDL**

Depth Driller **4780**

Depth Logger **4783**

Bottom Logged Interval **4762**

Top Logged Interval **3650**

Type Fluid In Hole **Chemical**

Salinity, PPM CL **2000**

Density **9.5**

Level **Full**

Max. Rec. Temp. F **124**

Operating Rig Time **5 1/2 Hours**

Equipment -- Location **17 Hays**

Recorded By **D. Martin**

Witnessed By **Steve Miller**

Borehole Record

Casing Record

Run No.	Bit	From	To	Size	Wgt.	From	To
One	12.25	00	226	8.625	23#	00	226
Two	7.875	226	TD				

<<< Fold Here >>>

All interpretations are opinions based on inferences from electrical or other measurements and we cannot and do not guarantee the accuracy or correctness of any interpretation, and we shall not, except in the case of gross or willful negligence on our part, be liable or responsible for any loss, costs, damages, or expenses incurred or sustained by anyone resulting from any interpretation made by any of our officers, agents or employees. These interpretations are also subject to our general terms and conditions set out in our current Price Schedule.

Comments

Thank you for using Log-Tech, Inc.
(785) 625-3858

Oakley, KS
11 S to Seneca Rd.(Gove Rd.),
1 W, 3/4 S, W Into

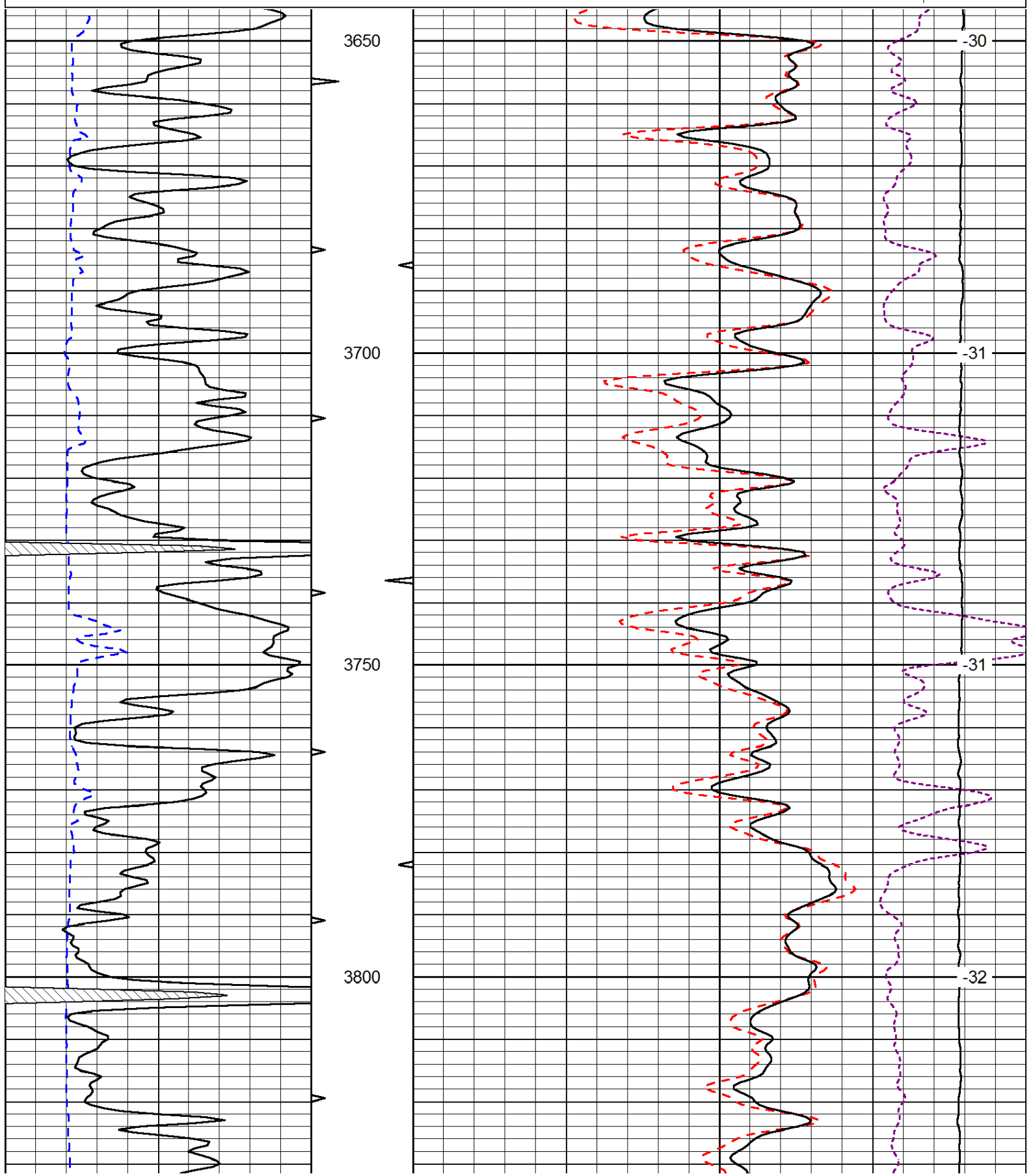
Database File: murfin_wwwm_2-4hd.db
Dataset Pathname: DIL/murfstk
Presentation Format: cdl
Dataset Creation: Sun Apr 14 23:07:31 2013
Charted by: Depth in Feet scaled 1:240

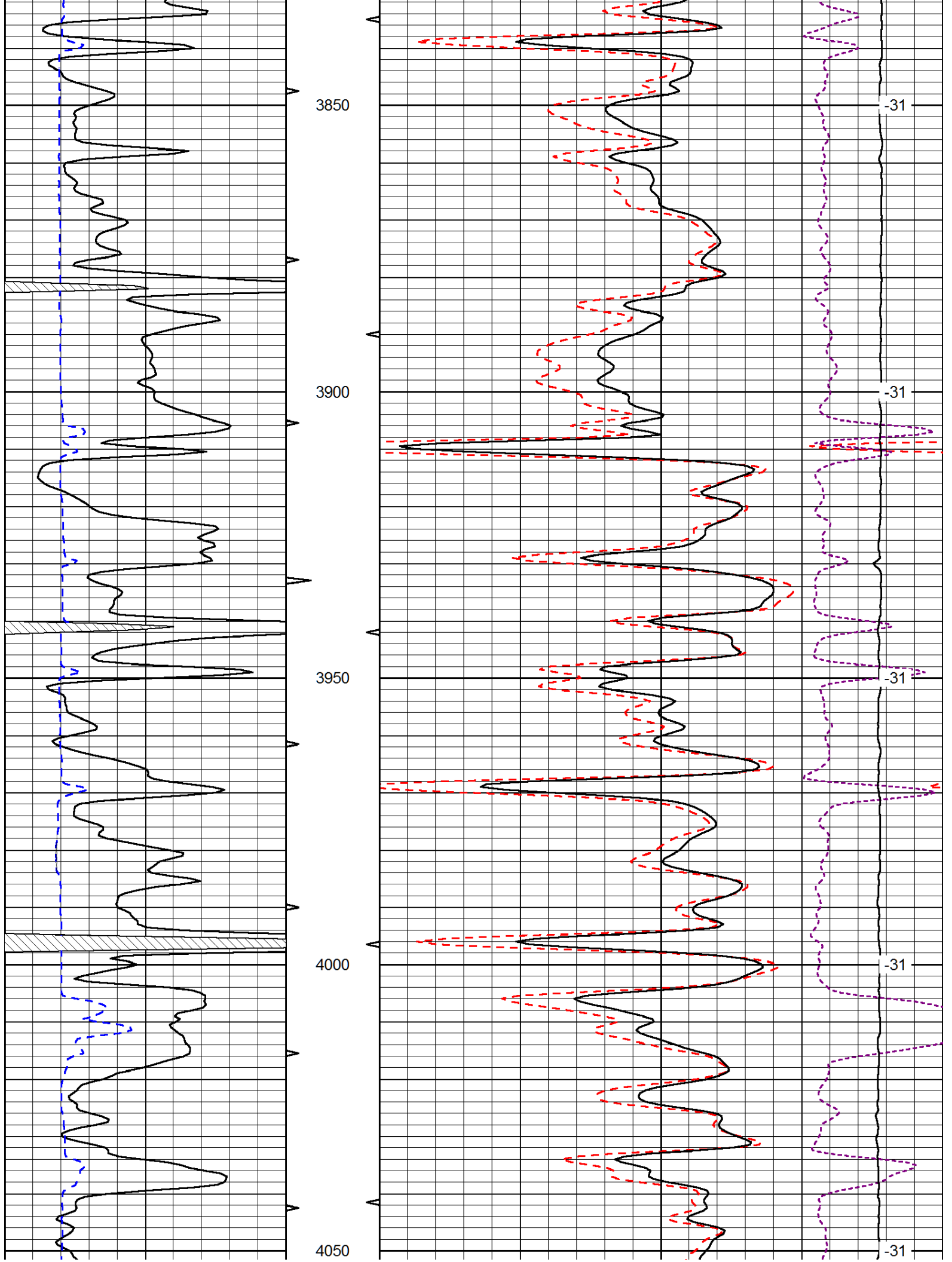
0	Gamma Ray (GAPI)	150
6	Caliper (in)	16

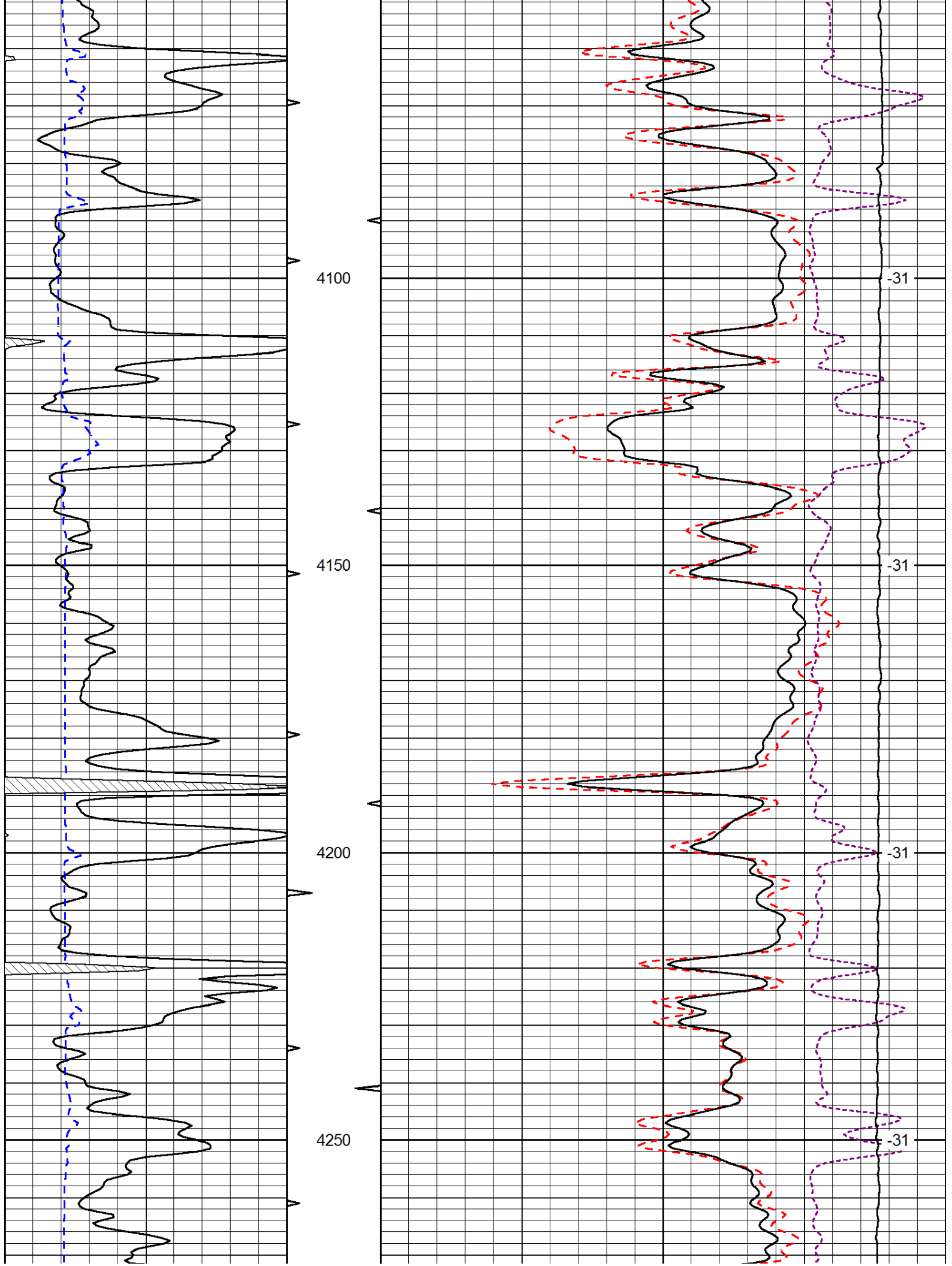
30	Compensated Density (pu)	-10
2	Bulk Density (g/cc)	3
15000	Line Tension (lb)	0

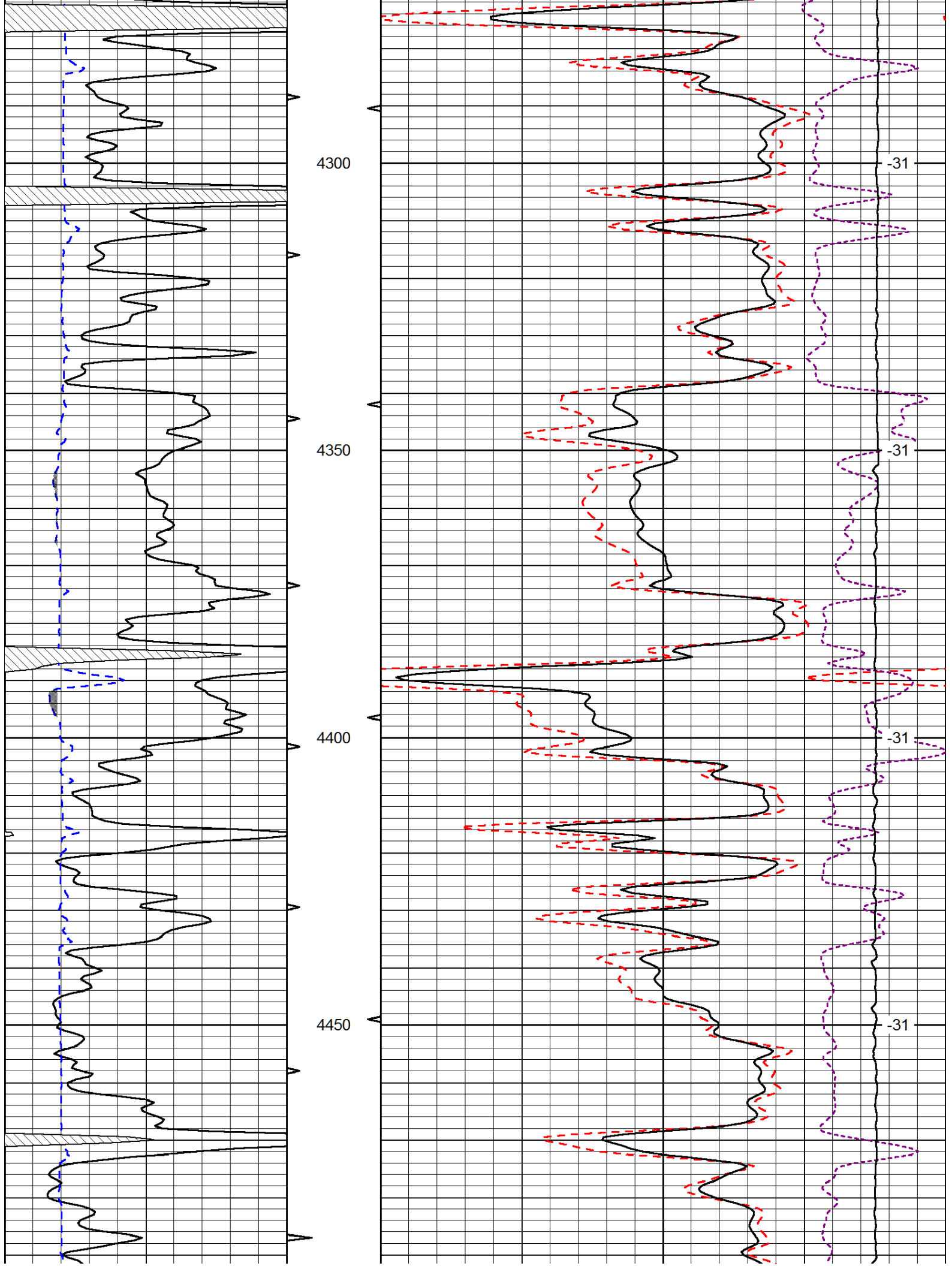
-0.25 Correction (g/cc) 0.25

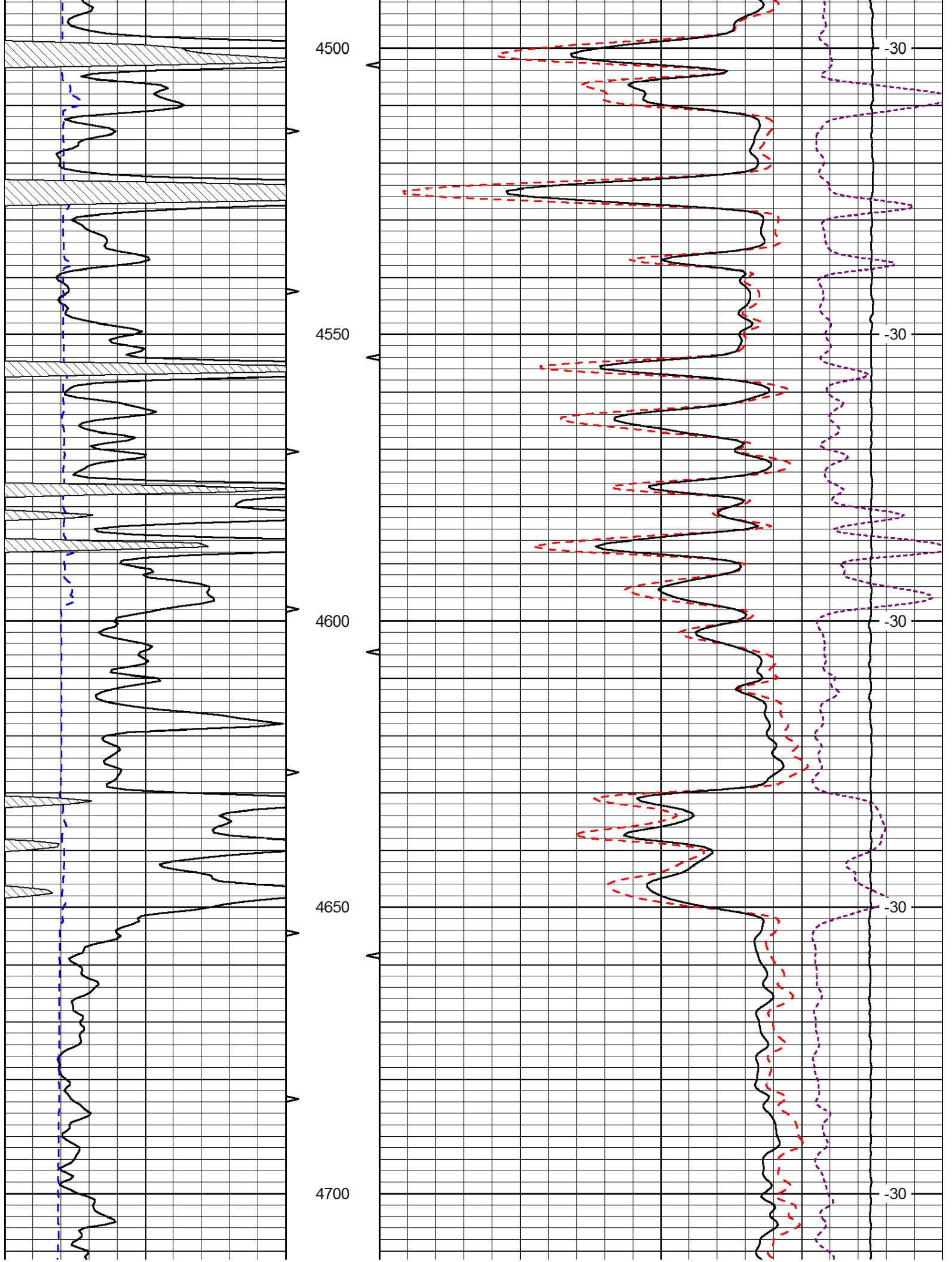
LSPD
(ft/min)

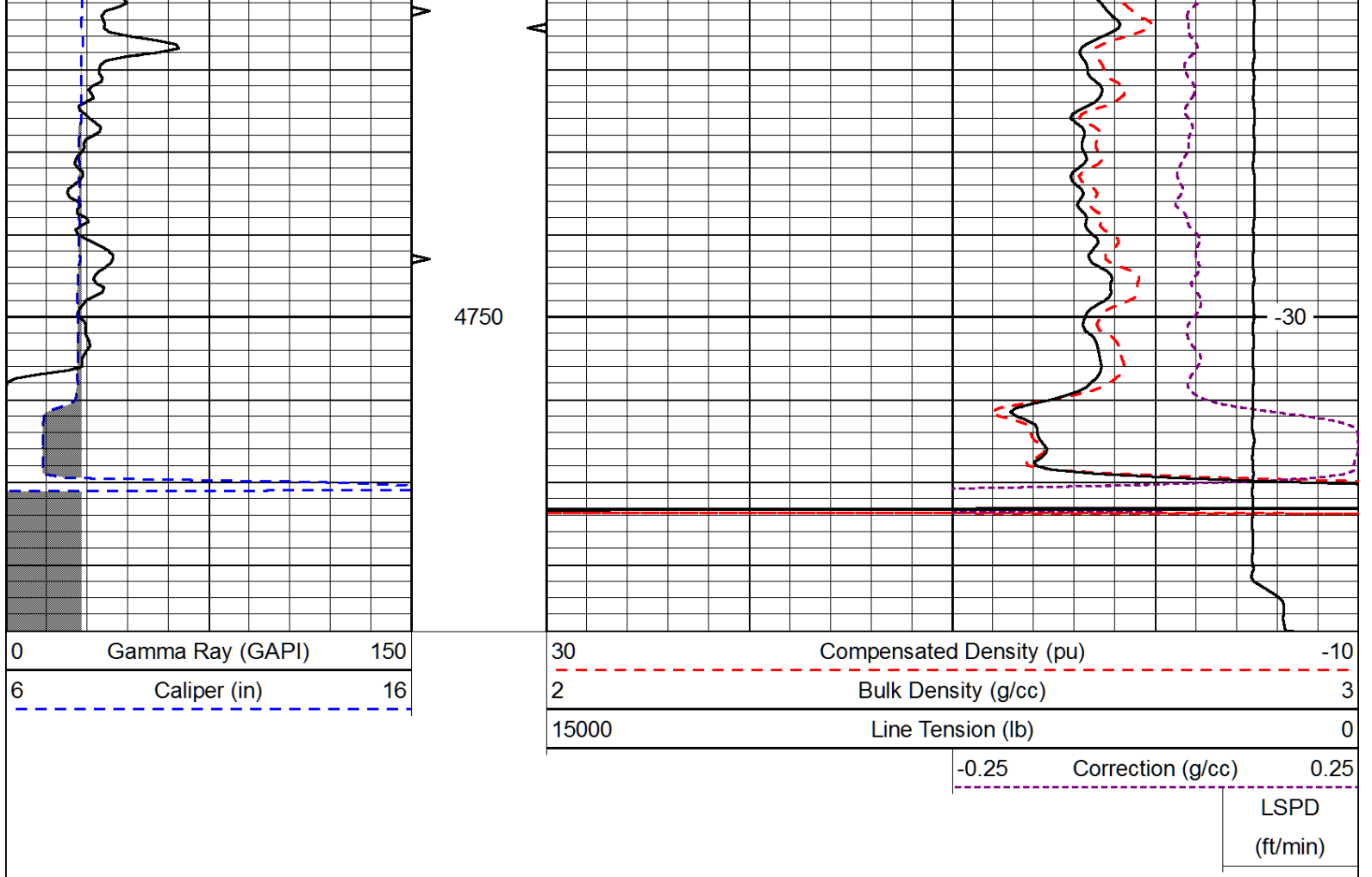




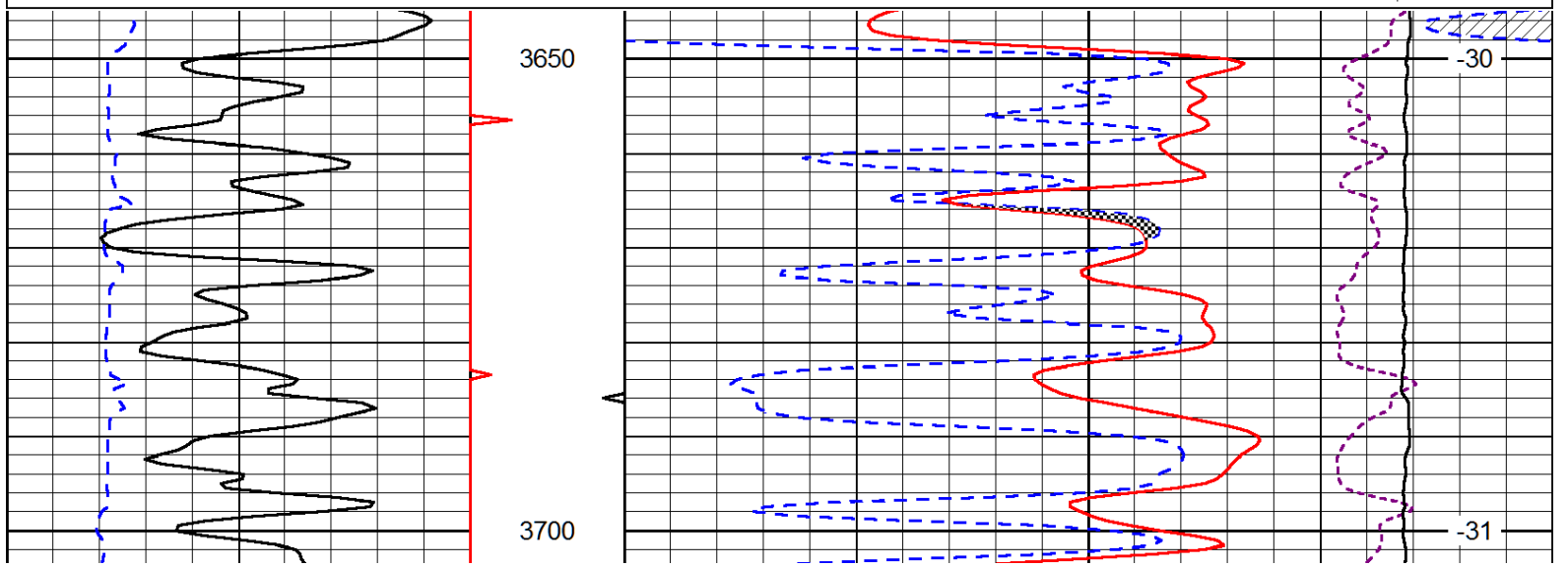
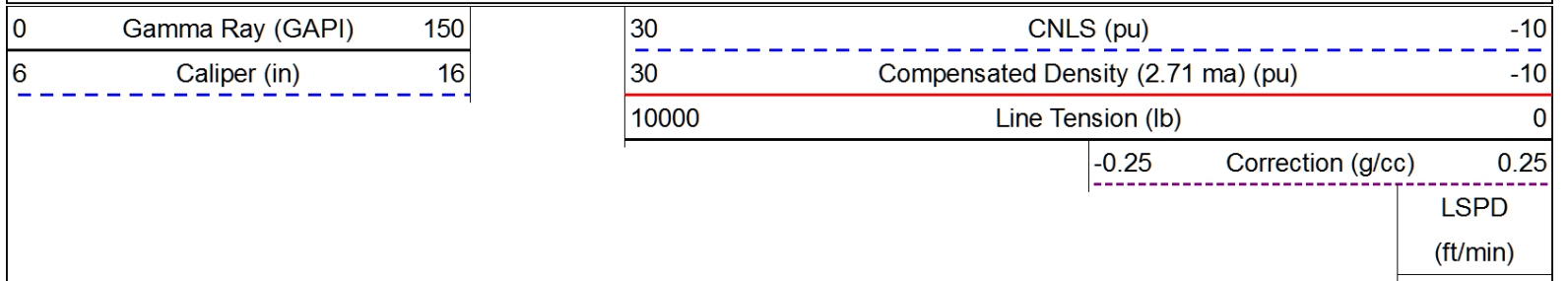


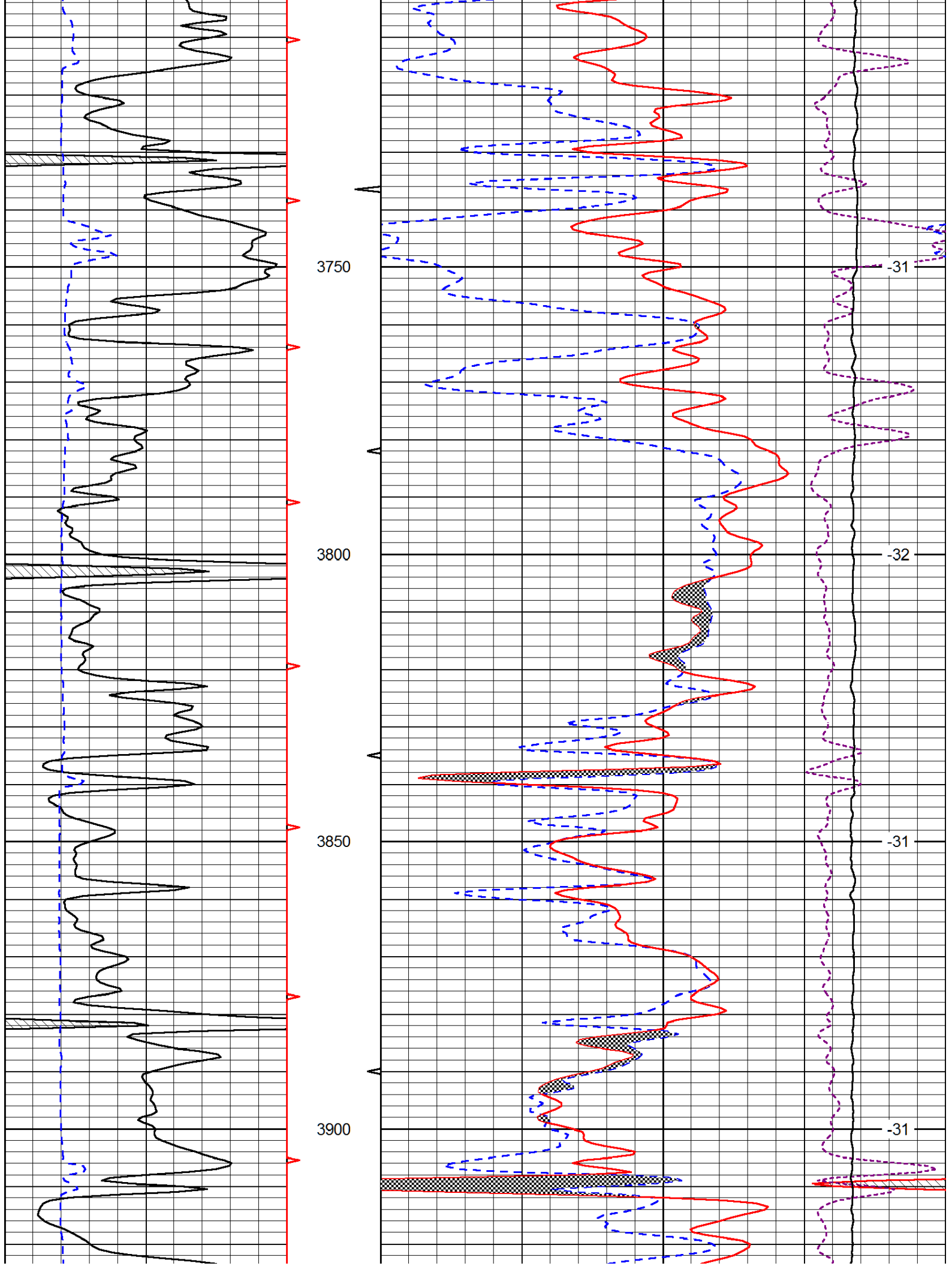


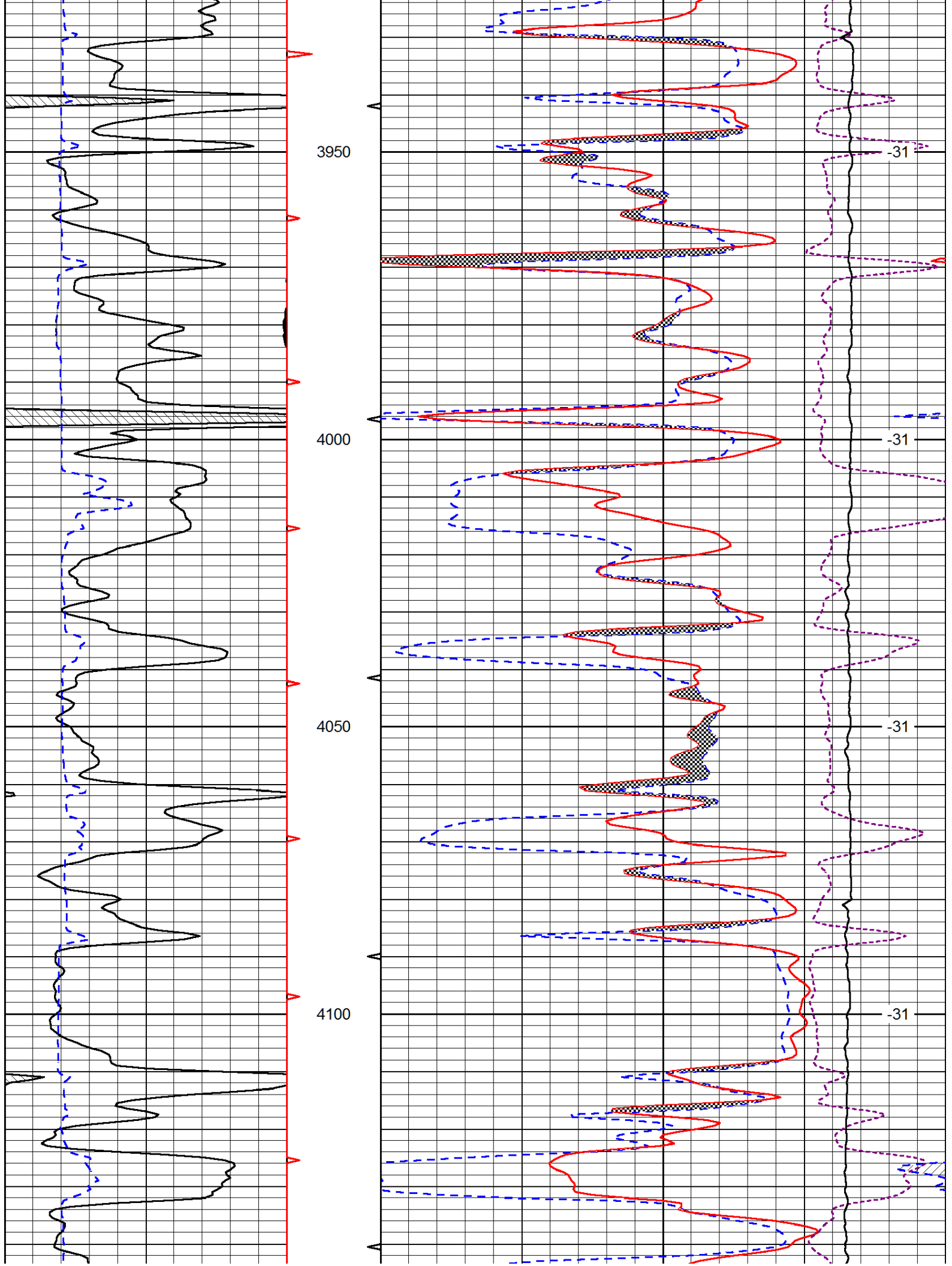


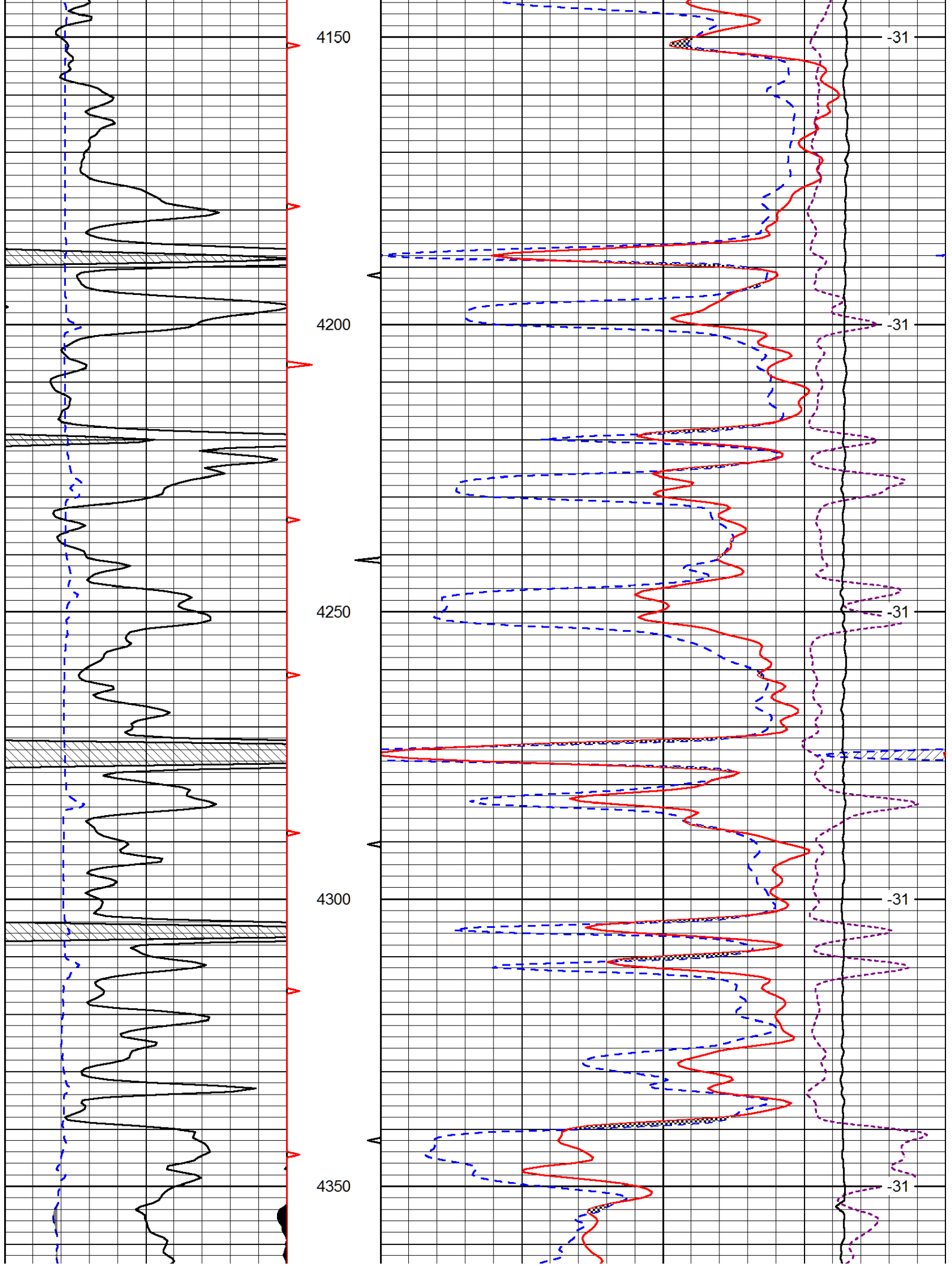


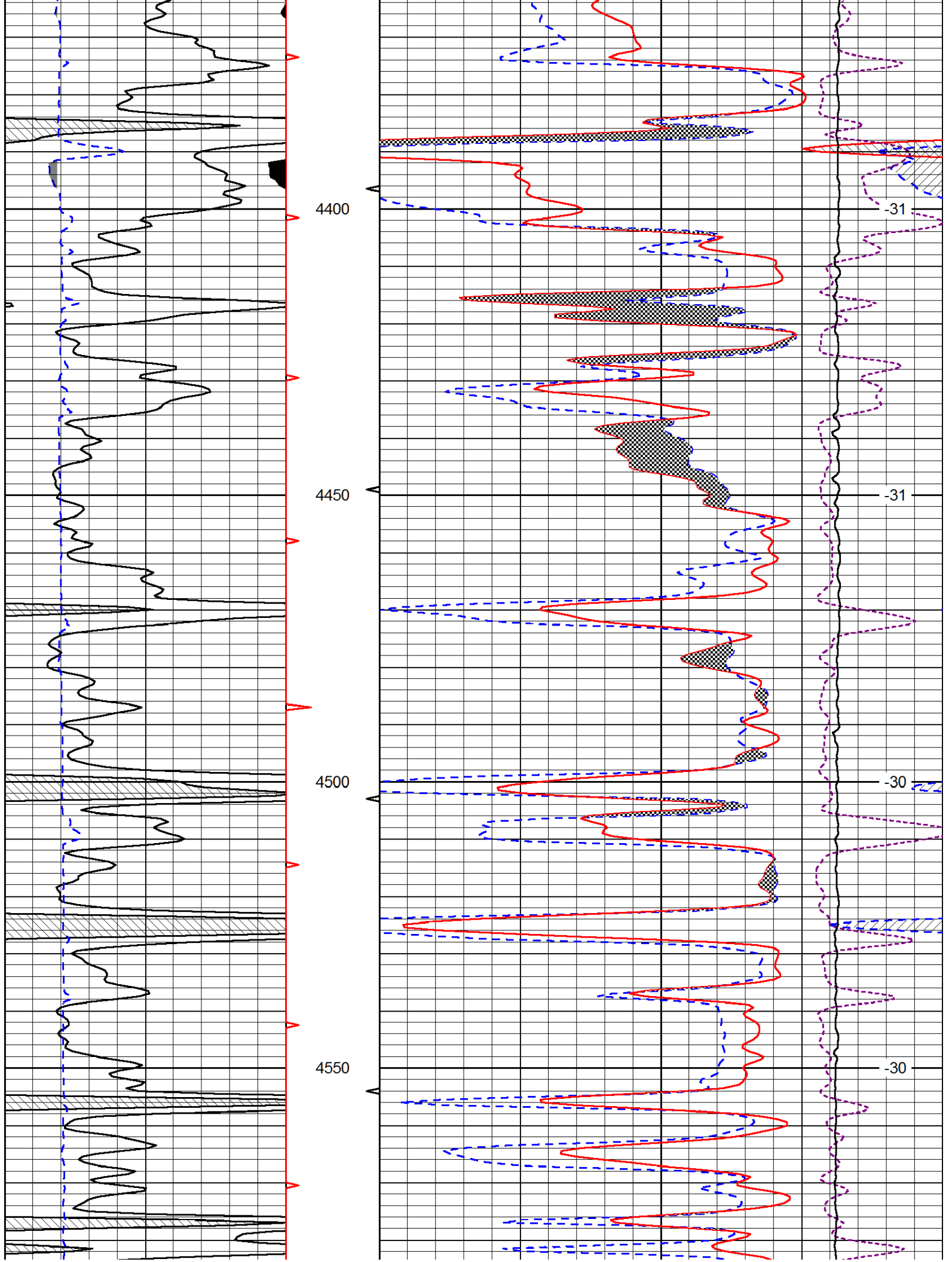
Database File: murfin_wwm_2-4hd.db
 Dataset Pathname: DIL/murfstk
 Presentation Format: cndlspec
 Dataset Creation: Sun Apr 14 23:07:31 2013
 Charted by: Depth in Feet scaled 1:240

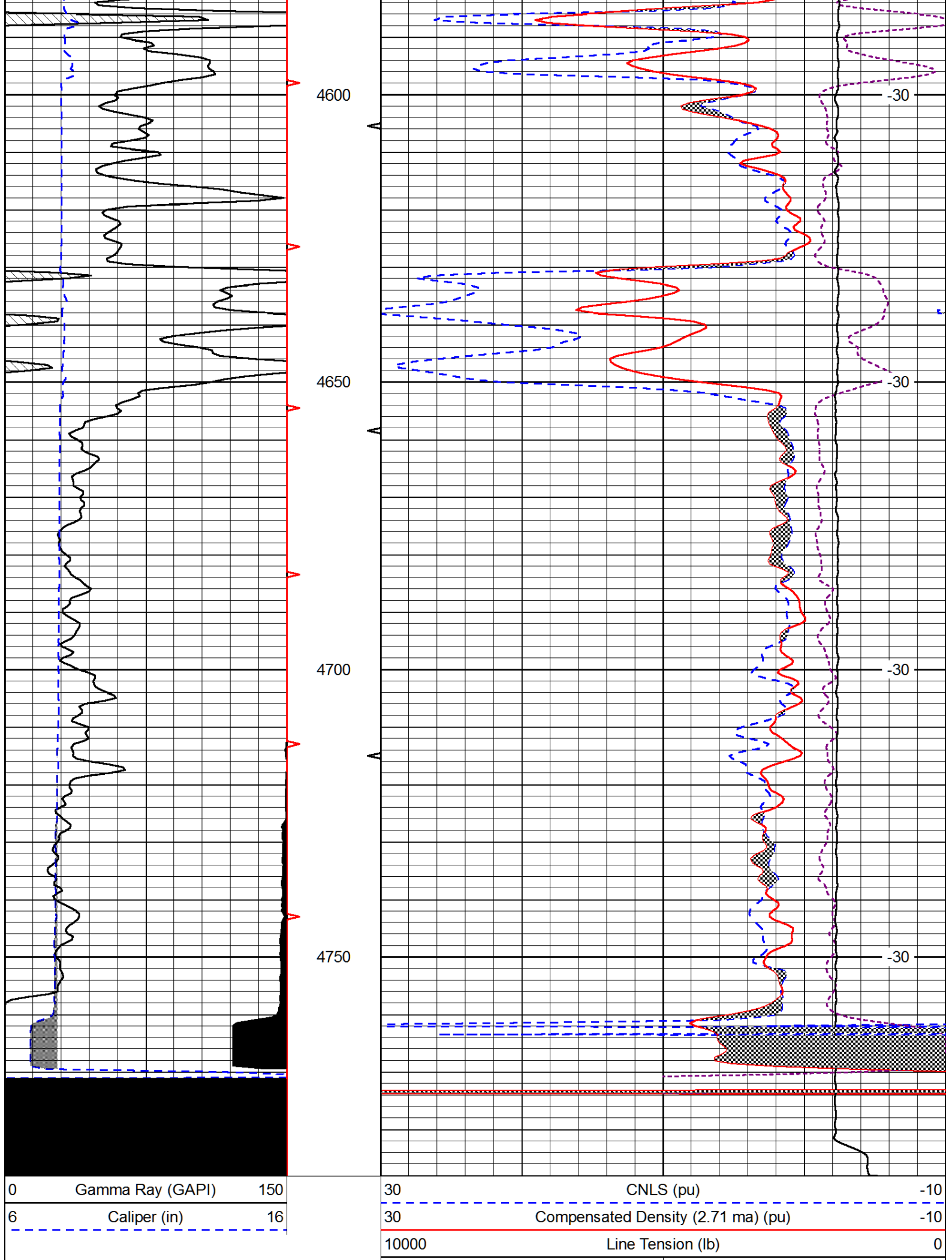












-0.25	Correction (g/cc)	0.25
LSPD (ft/min)		