

MID CONTINENT WELL LOGGING SERVICE, INC.

CONTINUOUS WELL LOGGING / COMPLETE HYDROCARBON ANALYSIS

2222 WESTPARK DR. STE. A
NORMAN, OK 73069
OFFICE (405) 360-7333
OPERATIONS (405) 590-3655
SALES (405) 203-9989

Scale 1:240 (5"=100') Imperial
Measured Depth Log

Well Name: SALLY 3420 2-12H
Location: SEC. 12, T34S, R20W, COMANCHE COUNTY, KANSAS
License Number: 15033217130100
Spud Date: 04/29/2013
Surface Coordinates: 200' FNL & 2,200' FWL SECTION 12, T34S, R20W
Region: COMANCHE
Drilling Completed: 05/09/2013

Bottom Hole 330' FSL & 1,980' FWL SECTION 12, T34S, R20W
Coordinates: LOGGED BY: Blake Johnson/ Adam Bromley
Ground Elevation (ft): 1,791' K.B. Elevation (ft): 1,811'
Logged Interval (ft): 2,200' To: 9,599' Total Depth (ft): 9,599'
Formation: MISSISSIPPIAN
Type of Drilling Fluid: WATER/NATIVE GEL

Printed by HORIZONTAL.LOG from WellSight Systems 1-800-447-1534 www.WellSight.com

OPERATOR

Company: SANDRIDGE ENERGY, INC
Address: 123 Robert S. Kerr Avenue, Ste. 2430
Oklahoma City, Oklahoma 73102-6406

GEOLOGIST

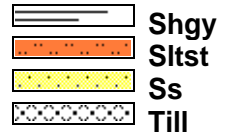
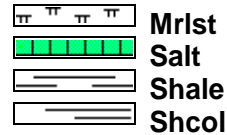
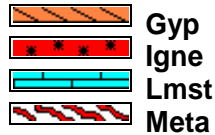
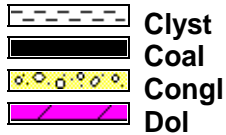
Name: Maggie Roden/ Kathy Gentry
Company: SANDRIDGE ENERGY, INC
Address: 123 Robert S. Kerr Avenue, Ste. 2430
Oklahoma City, Oklahoma 73102-6406

Cores

DSTs

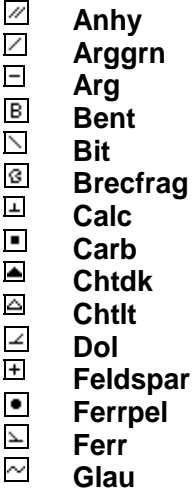
Comments

ROCK TYPES

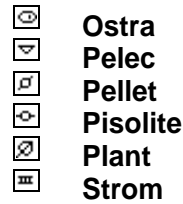
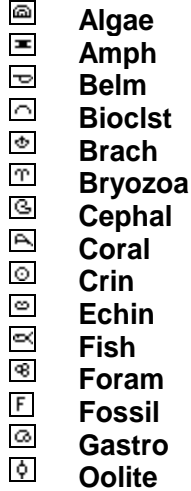


ACCESSORIES

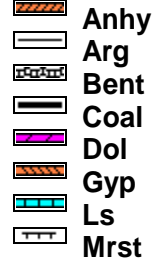
MINERAL



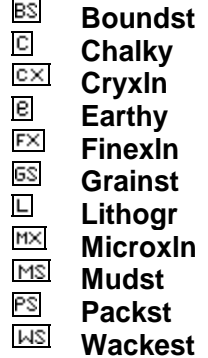
FOSSIL



STRINGER

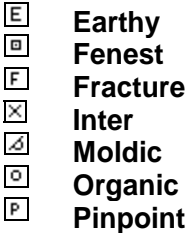


TEXTURE



OTHER SYMBOLS

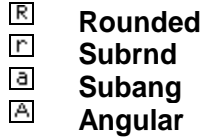
POROSITY



SORTING



ROUNDING



OIL SHOW

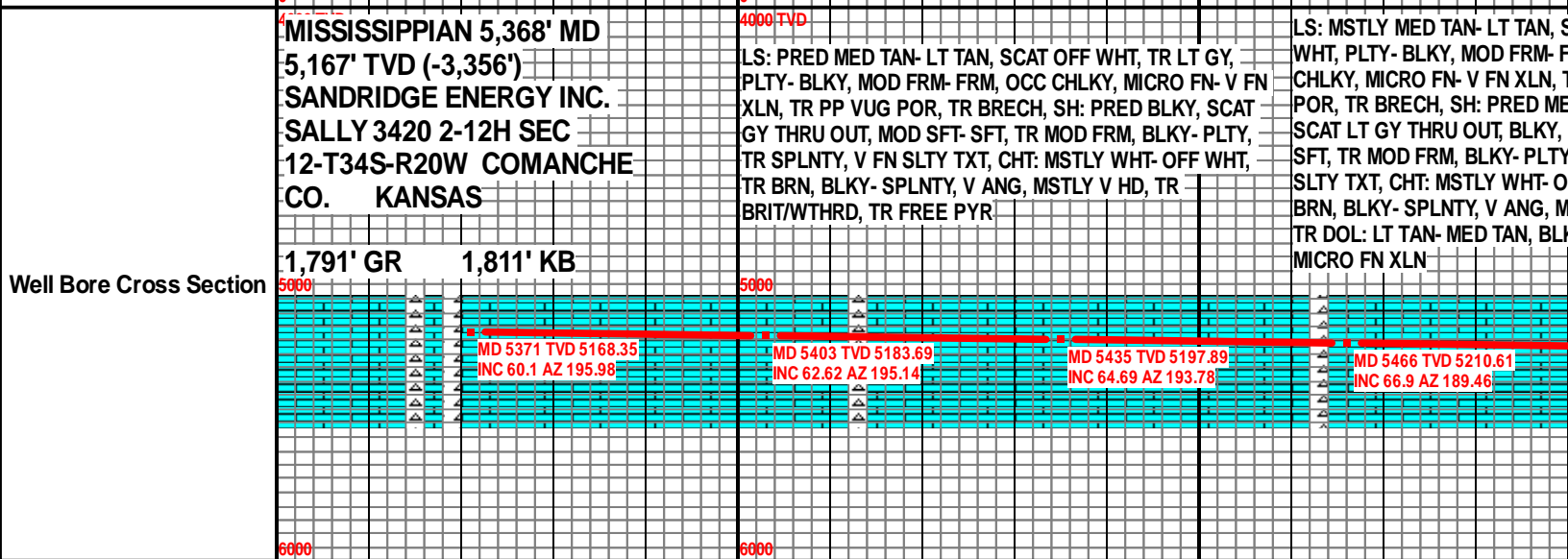
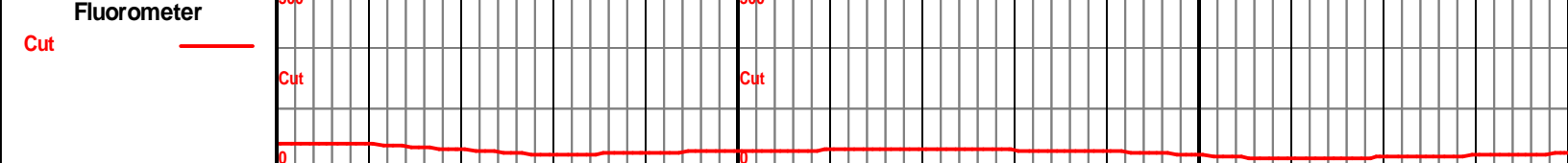
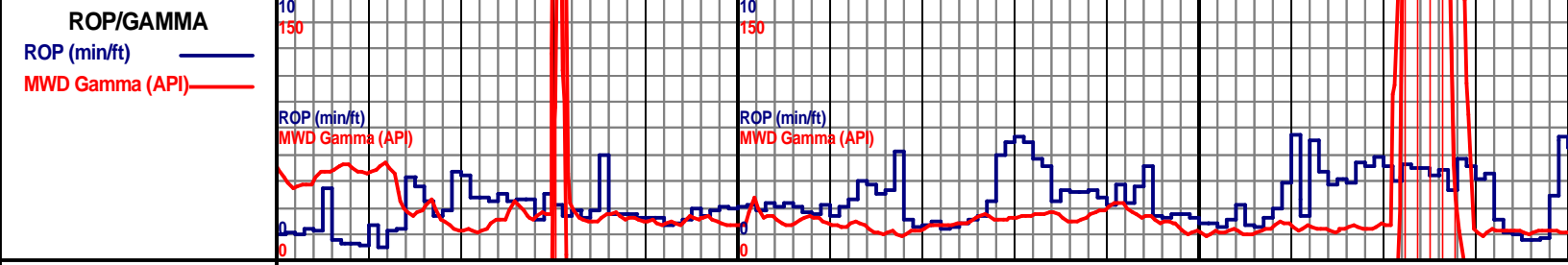
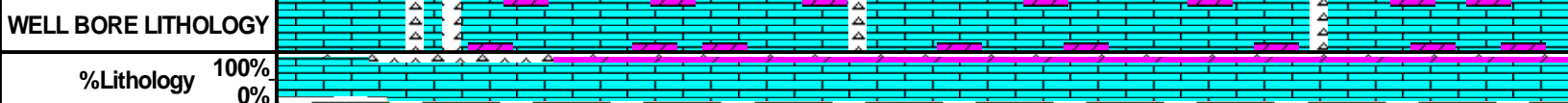
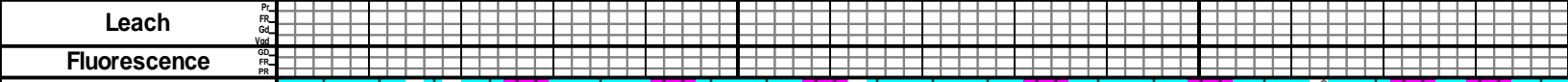
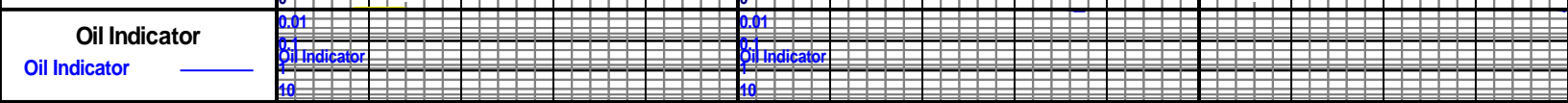
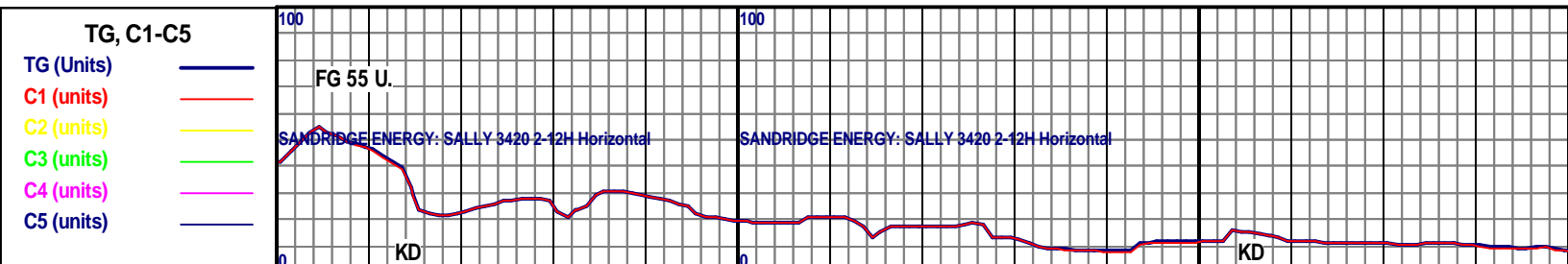


INTERVAL



EVENT





SANDRIDGE ENERGY: SALLY 3420 2-12H Horizontal

KD

KD

0

0.01

Oil Indicator

10

10

150

ROP (min/ft)

MPVD Gamma (API)

0

5500

5550

5600

5650

300

Cut

4000 TVD

SCAT OFF
FRM, OCC
TR PP VUG
ED GY- DK GY,
MOD SFT-
, PRED V FN
FF WHT, TR
STLY V HD,
KY, MOD FRM,

LS: PRED MED TAN- LT TAN, SME OFF WHT, BLKY- PLTY, MOD FRM- FRM, SME
CHLKY, MICRO FN- V FN XLN, OCC BRECH, TR PP VUG POR, SH: MSTLY DK GY-
MED GY, BLKY, MOD FRM- MOD SFT, SMTH- MOD SMTH TXT, CHT: MSTLY WHT-
OFF WHT, TR BRN, BLKY- SPLNTY, V ANG, V HD, TR DOL: LT TAN- MED TAN,
BLKY, MOD FRM, MICRO FN XLN TR MICRO INGRND PYR

LS: MSTLY MED TAN- LT TAN, OCC
OFF WHT, PLTY- BLKY, MOD FRM-
FRM, SME CHLKY, MSTLY MICRO
FN XLN, OCC V FN XLN, OCC
BRECH, TR HL FRAC POR, TR
SNDY LS, DOL: PRED BRN- LT BRN,
BLKY, FRM- MOD HD, MICRO FN
XLN, CHT: OFF WHT- OPQ, SPLNTY-
BLKY, V HD- HD, TR BRIT, TR HL
FRAC POR

LS
W
PL
FR
XL
PC
BL
PC

MD 5498 TVD 5222.63
INC 68.98 AZ 188.97

MD 5529 TVD 5233.08
INC 71.59 AZ 186.86

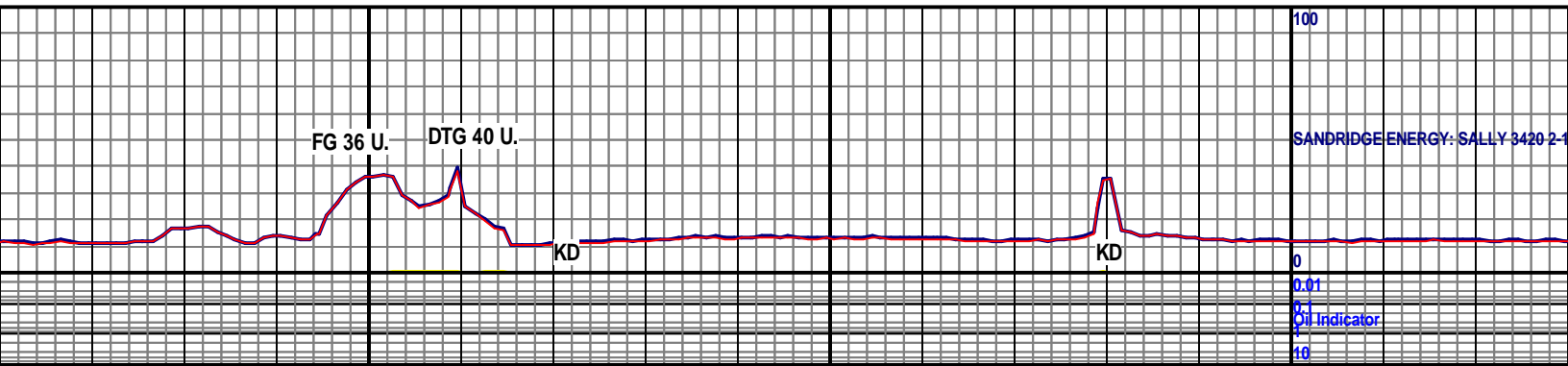
MD 5561 TVD 5242.52
INC 74.11 AZ 184.74

MD 5593 TVD 5250.53
INC 76.89 AZ 181.48

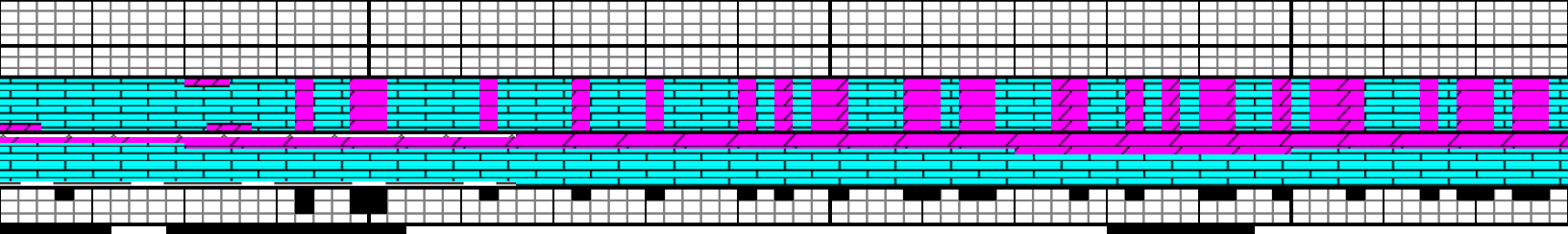
MD 5624 TVD 5256.77
INC 79.89 AZ 181.04

5000

6000

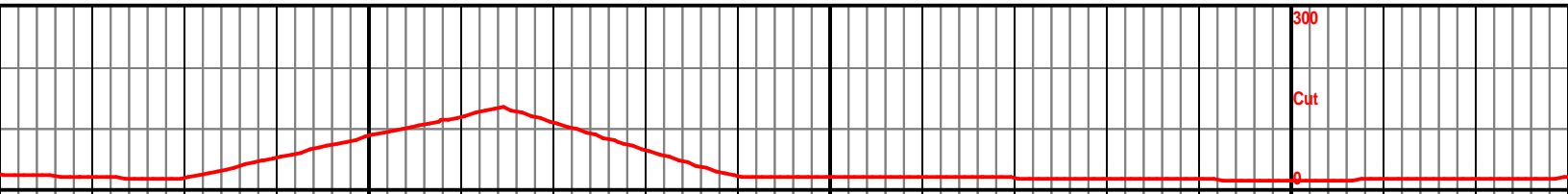
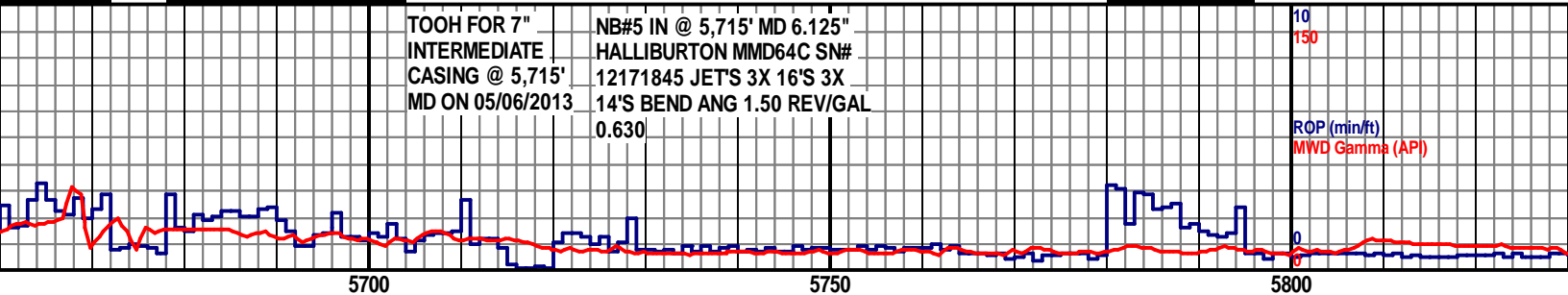


SANDRIDGE ENERGY: SALLY 3420 2-4



TOOH FOR 7" INTERMEDIATE CASING @ 5,715' MD ON 05/06/2013
 NB#5 IN @ 5,715' MD 6.125" HALLIBURTON MMD64C SN# 12171845 JET'S 3X 16'S 3X 14'S BEND ANG 1.50 REV/GAL 0.630

ROP (min/ft)
 MWD Gamma (API)

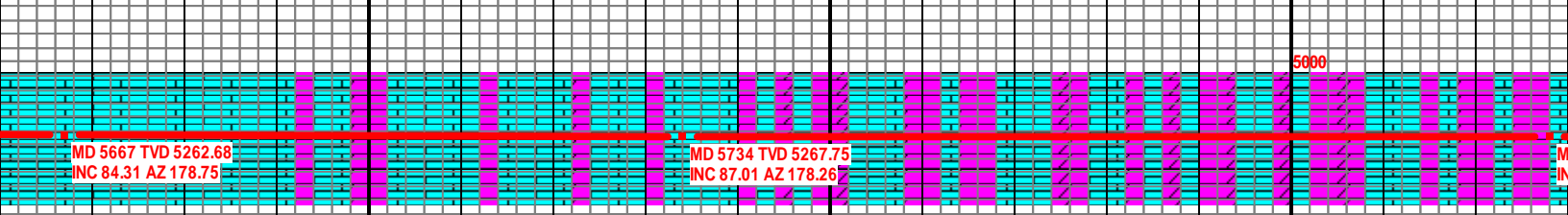


LS: PRED LT TAN- MED TAN, SCAT OFF HT THRU OUT, OCC OOL, TR OIDS, PLTY- BLKY, INCRG BLKY, MOD FRM- FRM, INCRG CHLKY, V FN- MICRO FN LN, OCC HL FRAC POR, TR PP VUG POR, DOL: DRK TAN- LT TAN, SUCRO, BLKY, MICRO FN XLN, PR INTRGRNLR POR

LS: MSTLY OFF WHT- WHT, SME LT TAN- MED TAN, OCC OOL, TR FREE OIDS, INCRG LITHO, PLTY- BLKY, MOD FRM- FRM, SME CHLKY, V FN- MICRO FN XLN, OCC HL FRAC POR, TR PP VUG POR, DOL: MED TAN- LT TAN, SUCRO, BLKY, MICRO FN XLN, PR- FR INTRGRNLR POR

WOB: 16
 RPM: 70
 SPM: 71
 PP: 1525
 GPM: 290

LS: PRED OFF WHT- WHT, SME LT TAN- MED TAN, OCC OOL, TR FREE OIDS, INCRG LITHO, PLTY- BLKY, MOD FRM- FRM, SME CHLKY, V FN- MICRO FN XLN, OCC HL FRAC POR, TR PP VUG POR, DOL: MED TAN- LT TAN, SUCRO, BLKY, MICRO FN XLN, PR- FR INTRGRNLR POR



MD 5667 TVD 5262.68
 INC 84.31 AZ 178.75

MD 5734 TVD 5267.75
 INC 87.01 AZ 178.26

4000 TVD

6000

2H Horizontal

KD

KD

05/08/2013 @
5,842' MD

5850

5900

5950

6000

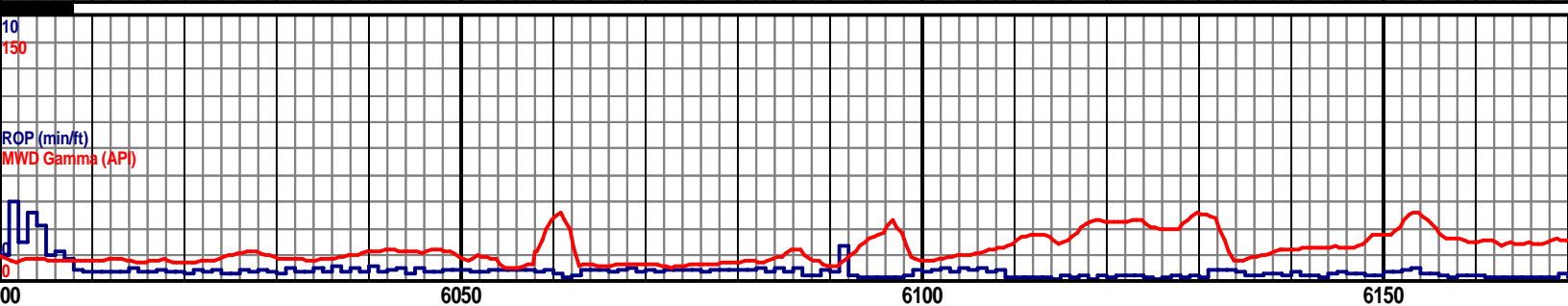
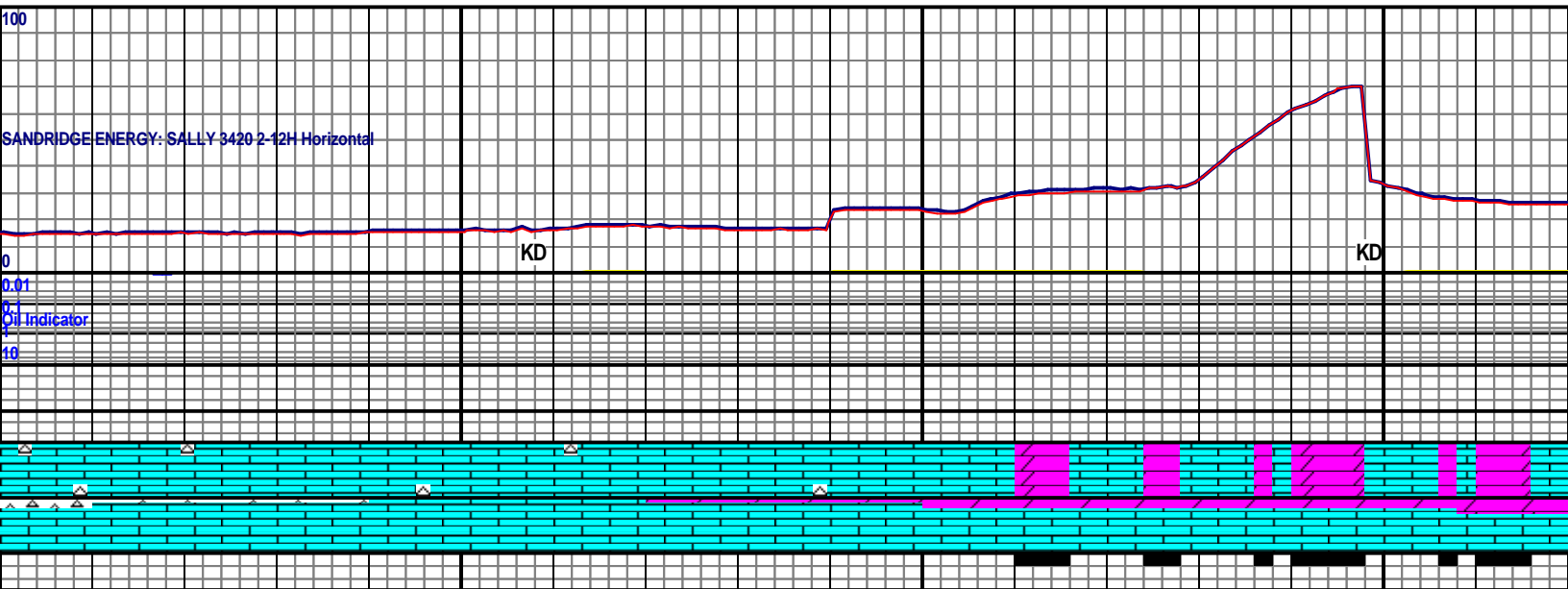
HT- WHT, SME LT TAN- MED TAN, SME OOL, TR FREE
LITHO, PLTY- BLKY, MOD FRM- FRM, SME CHLKY, V FN-
OCC HL FRAC POR, TR PP VUG POR, DOL: MSTLY MED
AT OFF WHT, DCRNGLY SUCRO, BLKY, MICRO FN XLN, PR

LS: MSTLY OFF WHT- LT TAN, BCMNG TAN, OCC OOL, TR FREE OIDS,
INCRNG LITHO, PLTY- BLKY, MOD FRM- FRM, BCMNG HD, MICRO FN-V FN
XLN, OCC HL FRAC POR, TR PP VUG POR, DOL: PRED MED TAN- LT TAN,
SCAT OFF WHT, BLKY, MICRO FN XLN, CHT: MSTLY OFF WHT- OPQ,
SPLNTY- BLKY, V HD- HD, TR MICRO INGRND PYR

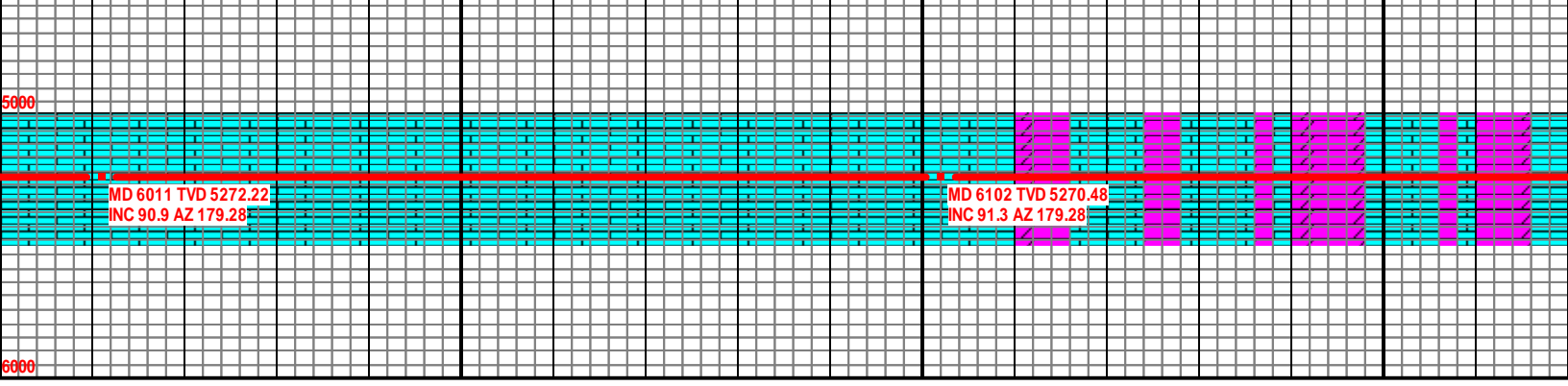
WO
RPI
SPN
PP:
GPI

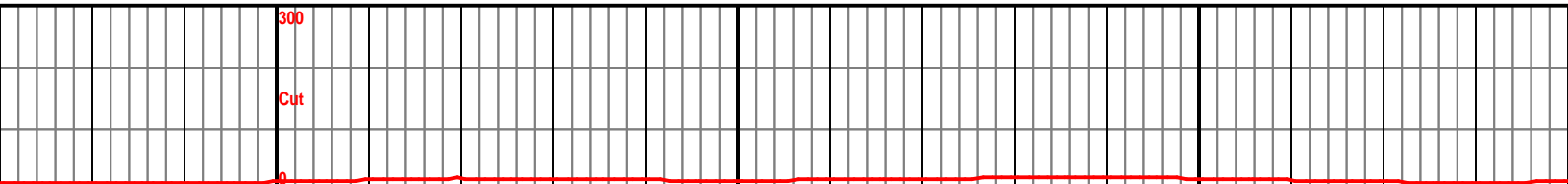
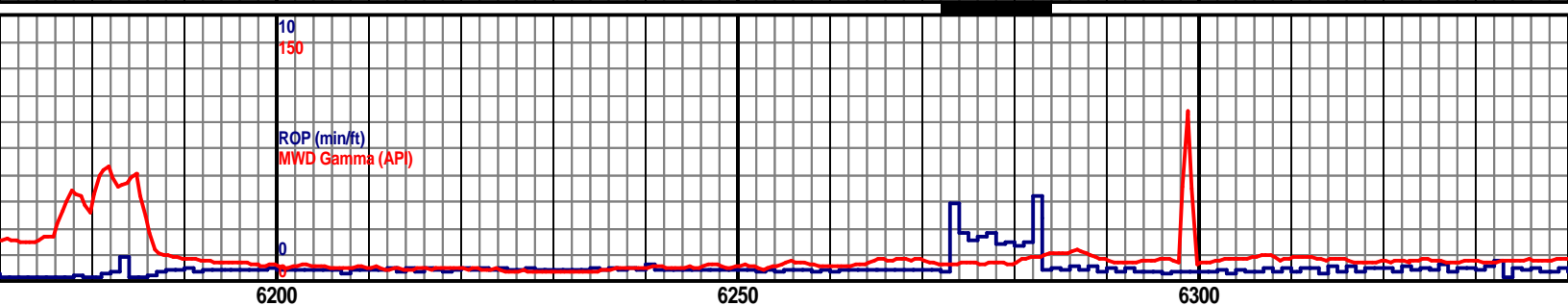
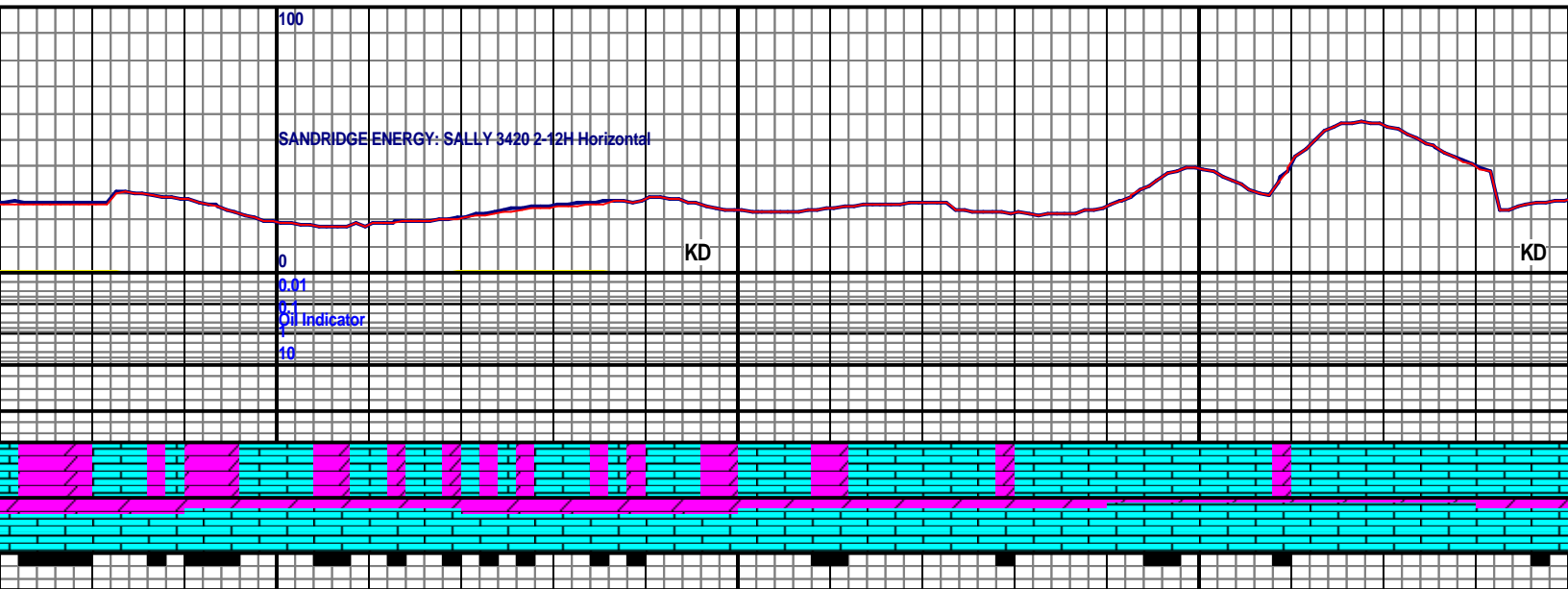
D 5828 TVD 5271.68
INC 88.2 AZ 178.04

MD 5919 TVD 5273.03
INC 90.1 AZ 178.35



<p>4000 TVD</p> <p>B: 20</p> <p>V: 70</p> <p>M: 71</p> <p>1679</p> <p>V: 292</p>	<p>LS: PRED MED TAN- TAN, SME LT TAN- OFF WHT, TR OOL, BLKY-PLTY, MOD FRM- FRM, SME HD, MICRO FN-V FN XLN, OCC HL FRAC POR, TR PP VUG POR, DOL: MSTLY MED TAN- LT TAN, SCAT OFF WHT, BLKY, MICRO FN XLN, CHT: PRED OFF WHT- OPQ, SPLNTY- BLKY, V HD- HD, TR CHT, TR MICRO INGRND - PYR</p>	<p>LS: MSTLY OFF WHT- WHT, OCC MED TAN- LT TAN, INCR OIDS, TR LITHO, PLTY- BLKY, MOD FRM- FRM, SME CH XLN, OCC HL FRAC POR, TR PP VUG POR, DOL: PRED M SME OFF WHT, SME SUCRO, BLKY, MICRO FN XLN, PR-</p>
--	--	--



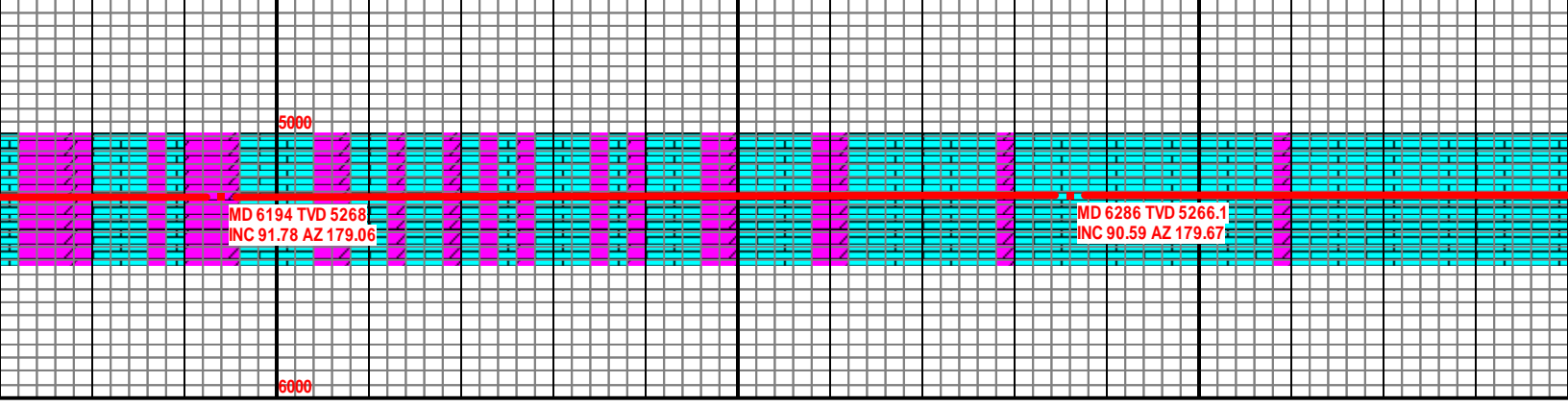


NG OOL, TR FREE
 LKY, V FN- MICRO FN
 MED TAN- LT TAN,
 FR INTRGRNLR POR

LS: PRED OFF WHT- LT TAN, TR WHT, OOL, SCAT OIDS, PLTY- BLKY,
 MOD FRM- FRM, MICRO FN- V FN XLN, DOL: LT TAN- OFF WHT, SUCRO,
 BLKY- PLTY, MOD FRM, MICRO FN XLN, CHT: WHT- OFF WHT, TR LT GY,
 SPLNTY- BLKY, V HD- HD

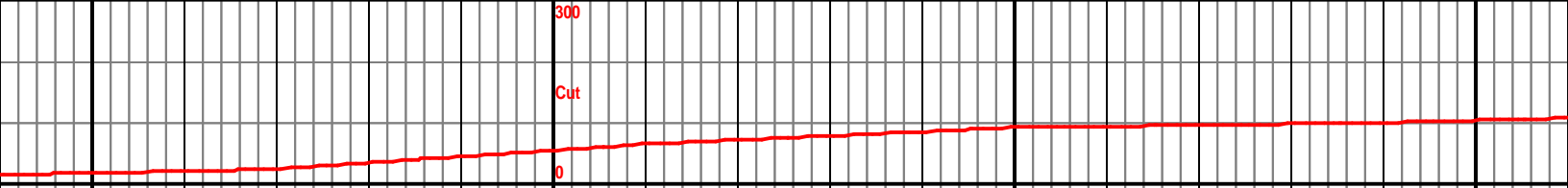
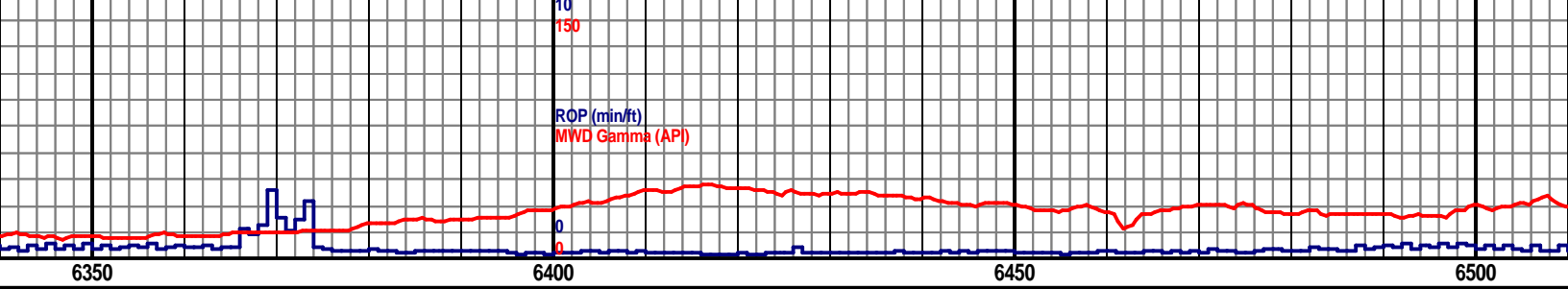
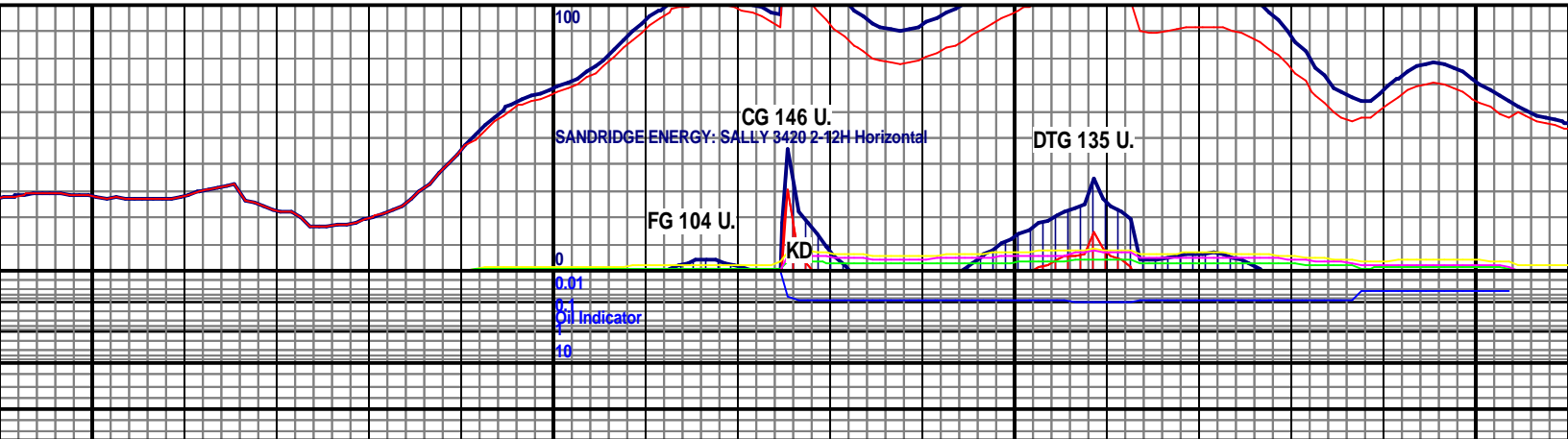
WOB: 11.8
 RPM: 68
 SPM: 71
 PP: 1679
 GPM: 291

LS: MSTLY OFF WHT- LT T
 OUT, BLKY- PLTY, DCRG
 FN XLN, DOL: PRED LT TA
 MICRO FN XLN, PR- FR IN



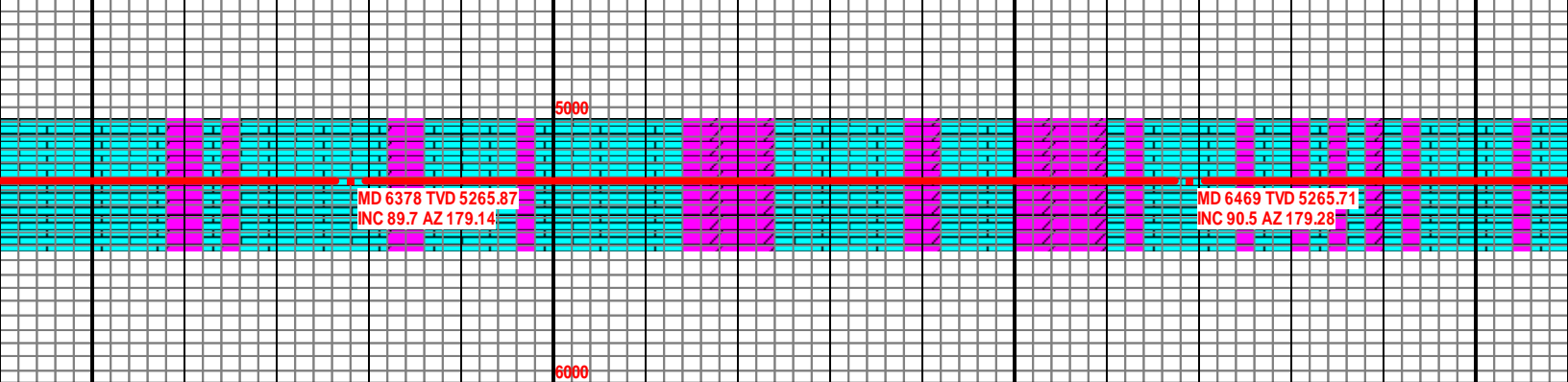
MD 6194 TVD 5268
 INC 91.78 AZ 179.06

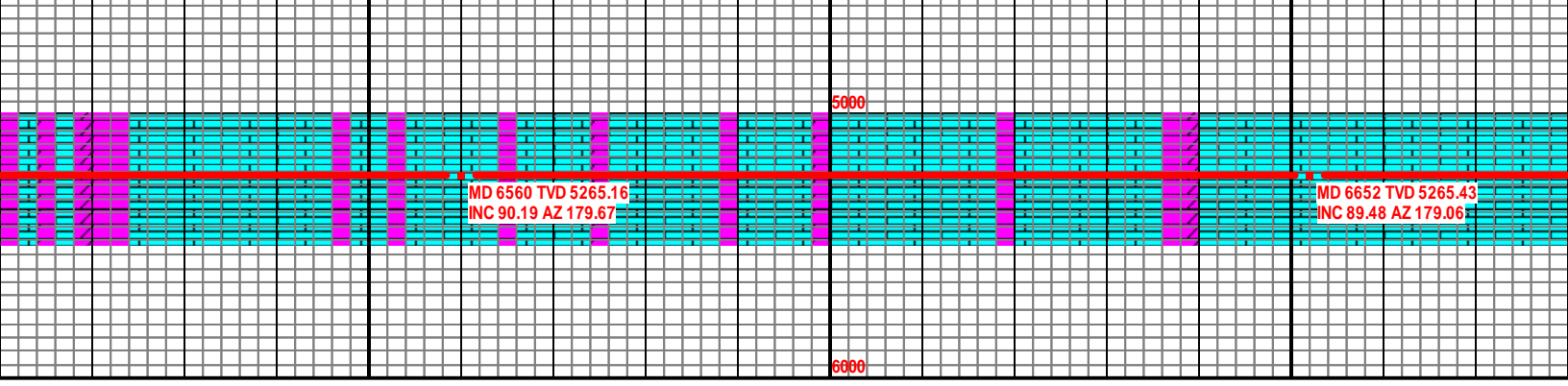
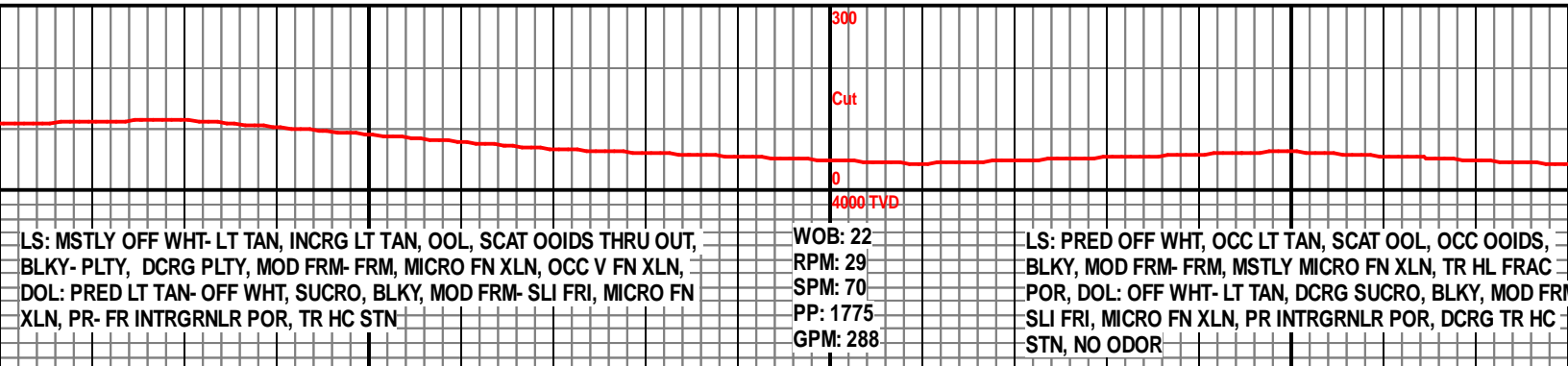
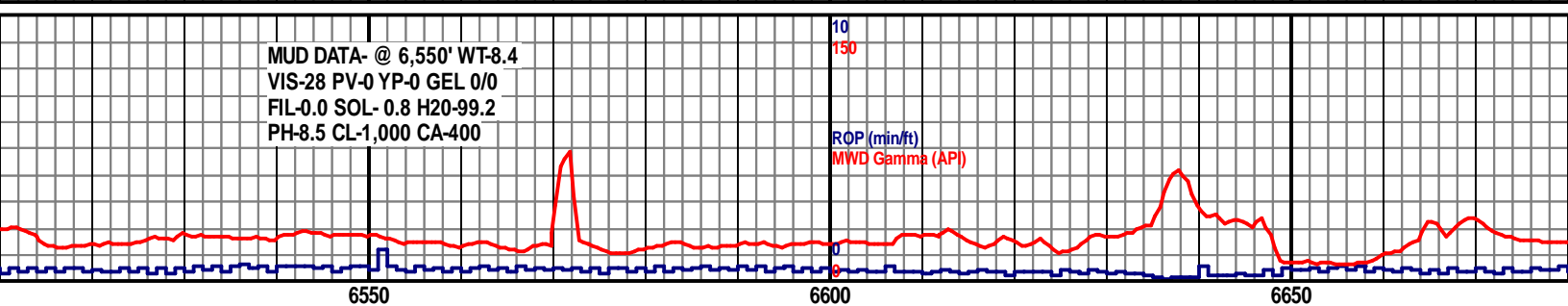
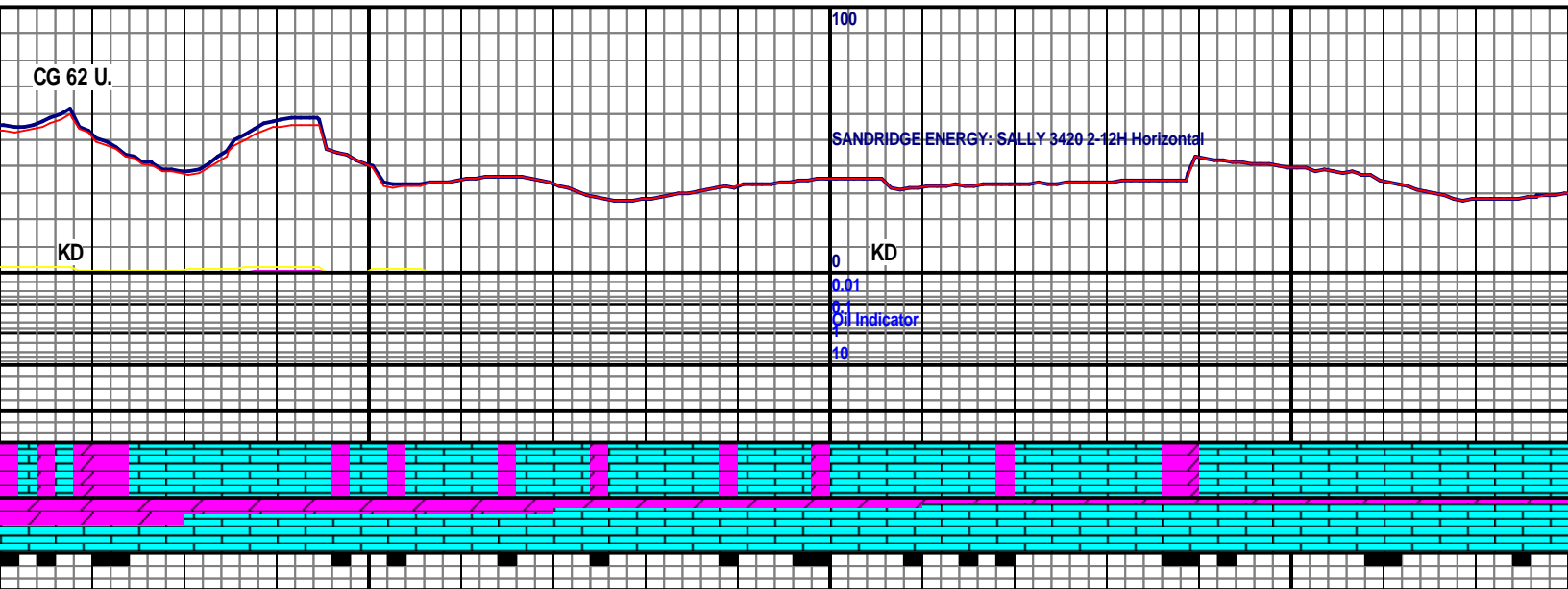
MD 6286 TVD 5266.1
 INC 90.59 AZ 179.67

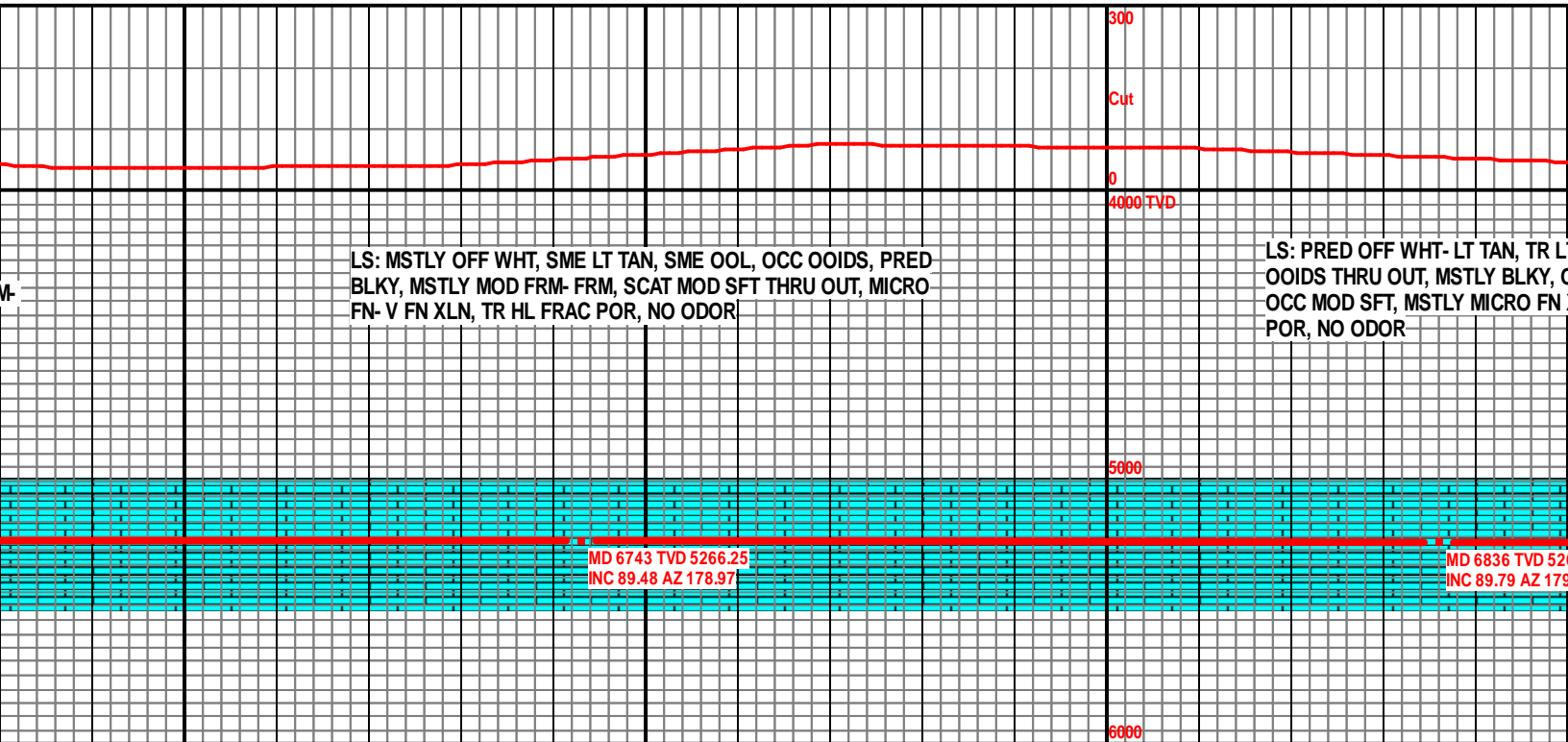
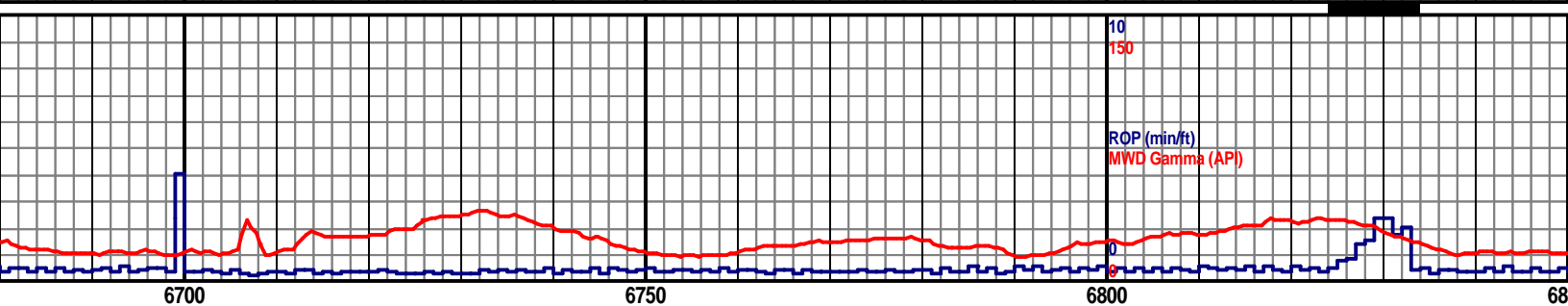
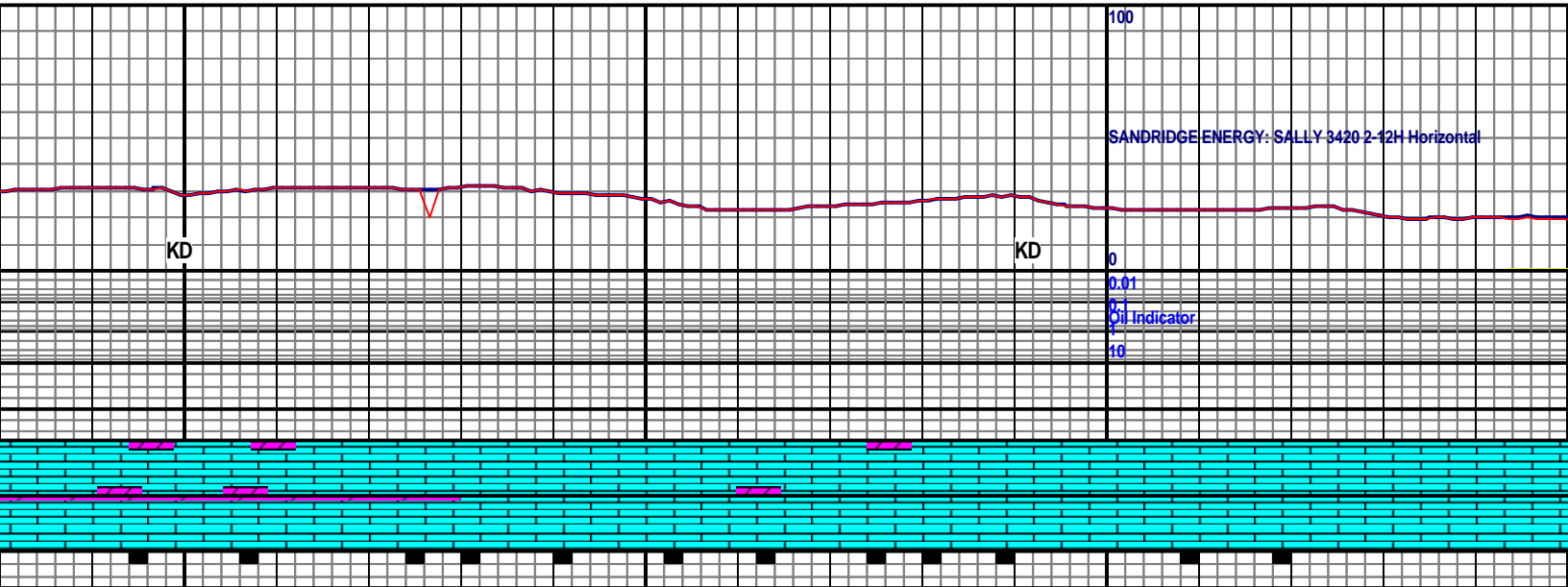


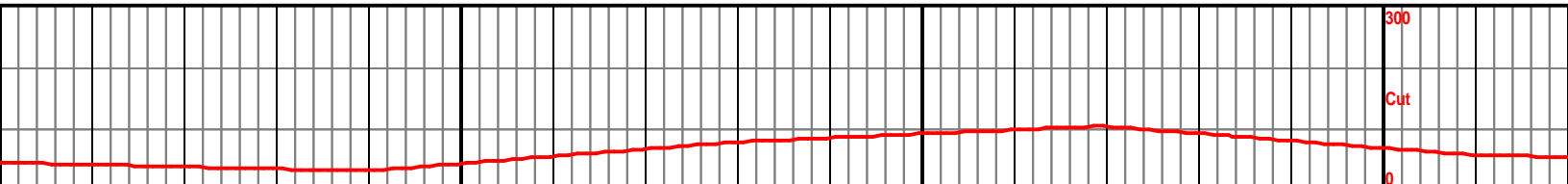
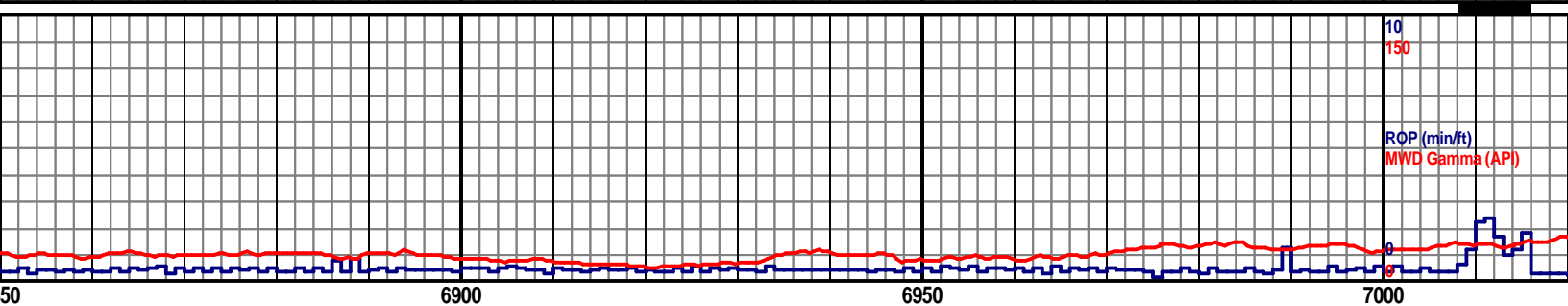
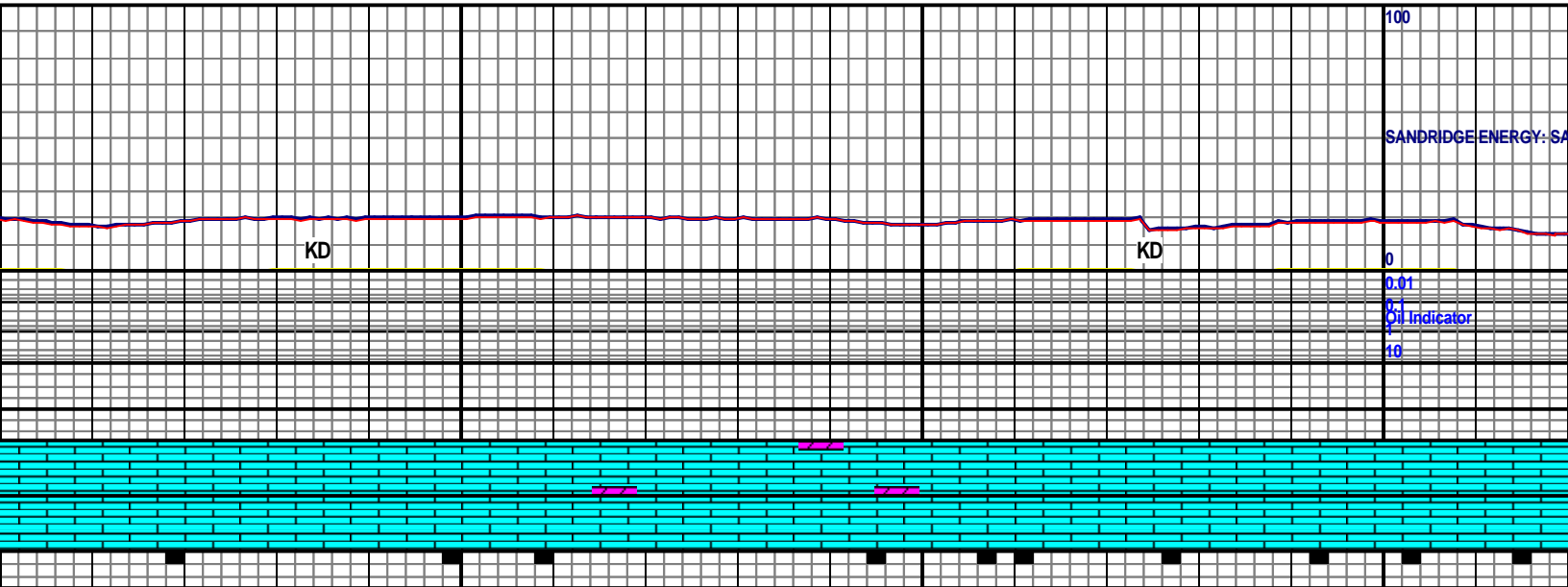
TAN, INCRG LT TAN, OOL, SCAT OIDS THRU
 PLTY, MOD FRM- FRM, MICRO FN XLN, OCC V
 AN- OFF WHT, SUCRO, BLKY, MOD FRM- SLI FRI,
 TRGRNLR POR, TR HC STN

DOL: PRED LT TAN, OCC OFF WHT, DCRG OFF WHT, SUCRO,
 BLKY, MSTLY SLI FRI, TR MOD FRM, MICRO FN XLN, FR- PR
 INTRGRNLR POR, SCAT HC STN, FNT ODOR, LS: OFF WHT- LT
 TAN, OOL, OCC OIDS, BLKY, TR PLTY, MOD FRM- FRM, OCC SFT,
 MICRO FN- V FN XLN





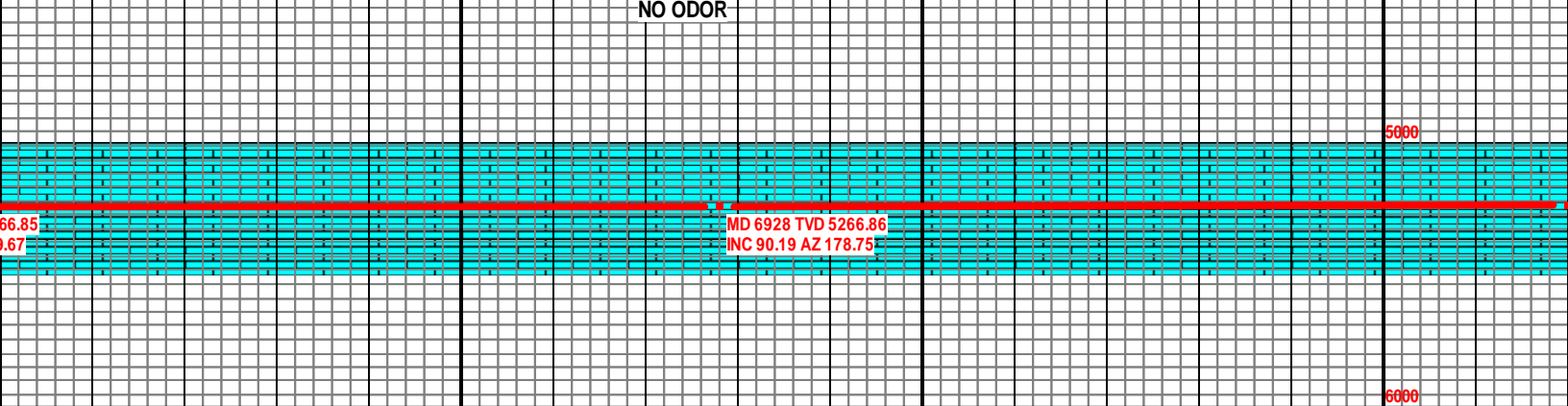




T GY, SLI INCRG LT GY, OOL, SCAT
 OCC PLTY, PRED MOD FRM- FRM,
 XLN, SCAT V FN XLN, TR HL FRAC

WOB: 16.2
 RPM: 70
 SPM: 72
 PP: 1758
 GPM: 295

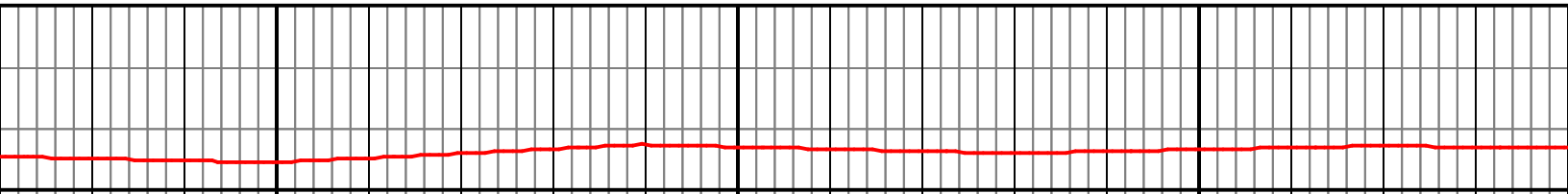
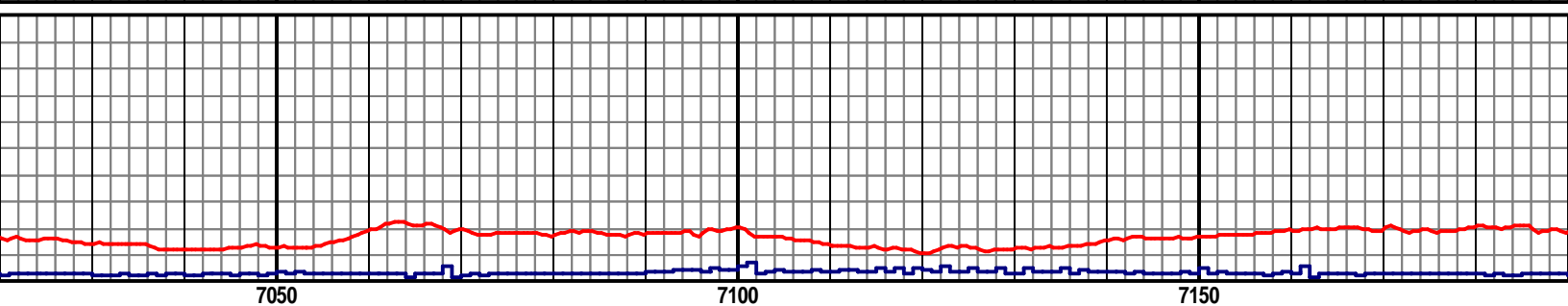
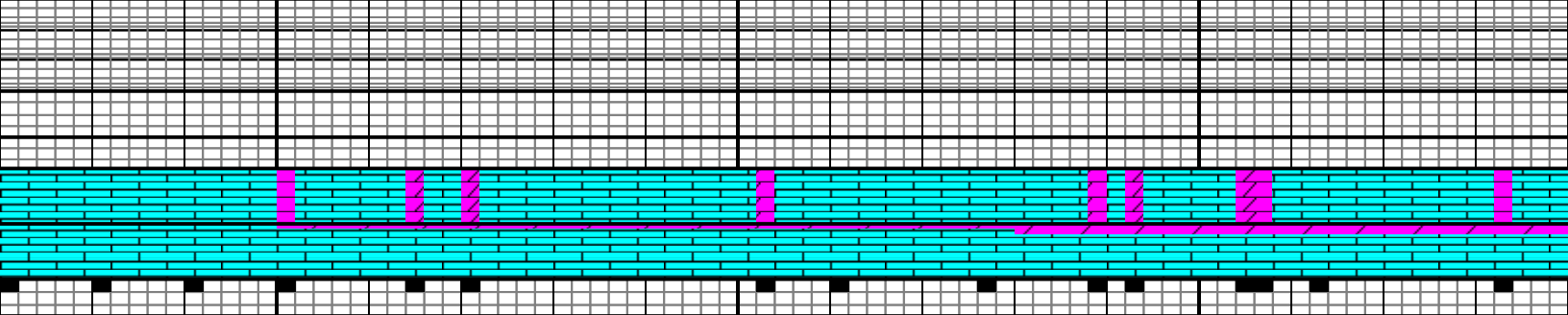
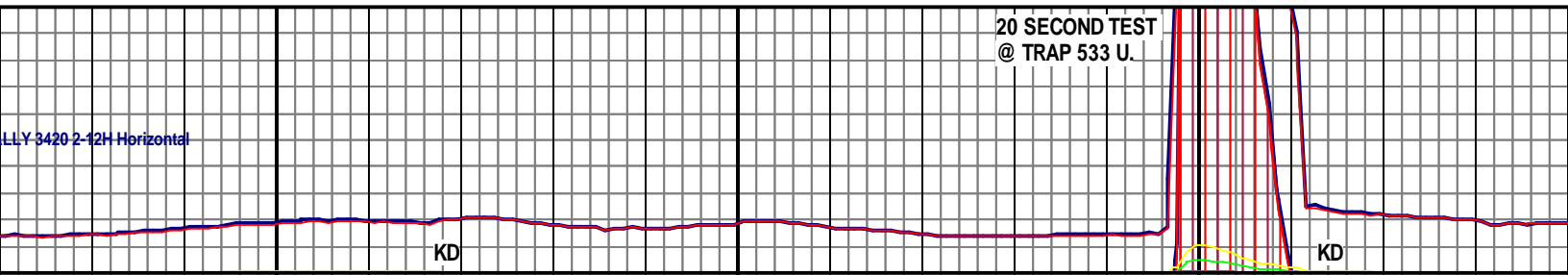
LS: MSTLY LT TAN- LT GY, SCAT OFF WHT THRU OUT, OCC WHT,
 OOL, SCAT OIDS, BLKY- PLTY, MOD SFT- MOD FRM, SCAT FRM
 THRU OUT, MICRO FN- V FN XLN, TR HL FRAC POR, TR DOL: OFF
 WHT- LT TAN, SUCRO, BLKY, MICRO FN XLN, MOD FRM- SLI FRI,
 NO ODOR



66.85 MD 6928 TVD 5266.86
 9.67 INC 90.19 AZ 178.75

20 SECOND TEST
@ TRAP 533 U.

LLY 3420 2-12H Horizontal



LS: PRED OFF WHT- LT TAN, SCAT LT GY THRU OUT, SME WHT, OOL,
OCC OOID, MSTLY BLKY, OCC PLTY, MOD SFT- MOD FRM, TR FRM,
MICRO FN- V FN XLN, DOL: LT TAN- OFF WHT, SUCRO, BLKY, SLI FRI-
MOD FRM, OCC FRI, MICRO FN XLN, PR INTRGRNLR POR, NO ODOR

LS: MSTLY OFF WHT- LT TAN, SCAT LT GY THRU OUT, SME WHT, OOL, OCC
OOID, PRED BLKY, OCC PLTY, MOD SFT- MOD FRM, TR FRM, MICRO FN- V
FN XLN, DOL: LT TAN- OFF WHT, SUCRO, BLKY, SLI FRI- MOD FRM, OCC
FRI, MICRO FN XLN, PR INTRGRNLR POR, NO ODOR



MD 7020 TVD 5266.13
INC 90.72 AZ 180.16

MD 7112 TVD 5265.33
INC 90.28 AZ 178.97

100

SANDRIDGE ENERGY: SALLY 3420 2-12H Horizontal

0
0.01
Oil Indicator
10

KD

KD

10
150

ROP (min/ft)
MWD Gamma (API)

7200

7250

7300

7350

300

Cut

0
4000 TVD

WOB: 20.7
RPM: 0
SPM: 71
PP: 1574
GPM: 293

DOL: PRED LT TAN- OFF WHT, SME OPQ, SUCRO, BLKY, SLI FRI- MOD
FRM, MICRO FN XLN, PR INTRGRNLR POR, LS: PRED OFF WHT- WHT,
SCAT LT TAN- LT GY THRU OUT, OOL, SCAT OIDS, MOD FRM- MOD
SFT, SME FRM, MICRO FN- V FN XLN, NO ODOR

DOL: MSTLY LT TAN- OFF WHT, SME OPQ, SUCRO
MICRO FN XLN, PR- FR INTRGRNLR POR, LS: PR
TAN, SME OOL, SCAT FREE OIDS, PRED PLTY,
FRM, MICRO FN- V FN XLN, NO ODOR

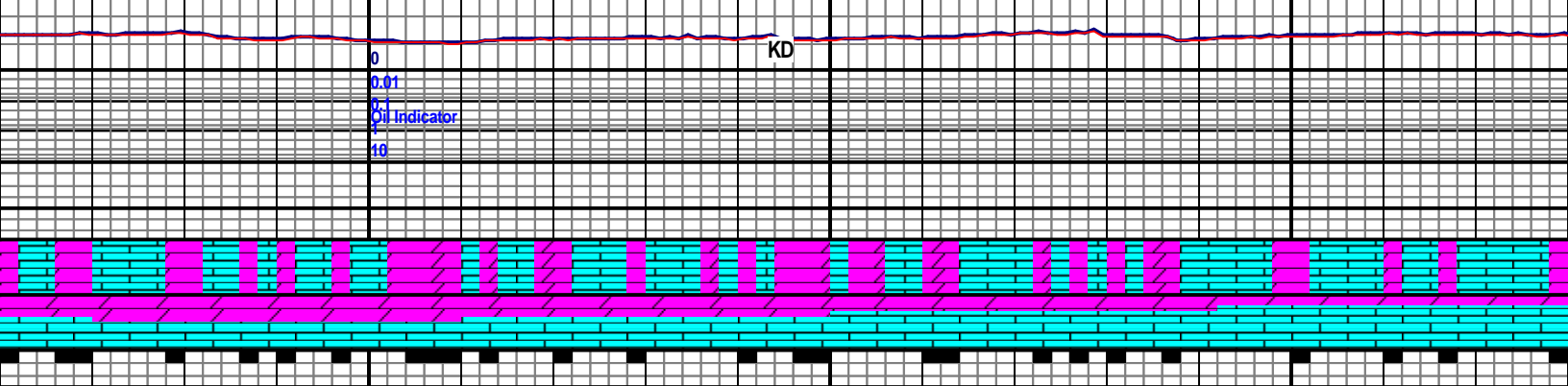
5000

MD 7207 TVD 5264.76
INC 90.41 AZ 179.54

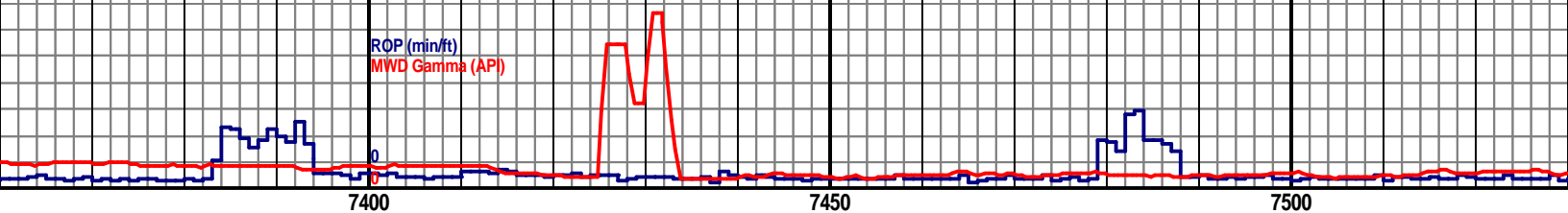
MD 7302 TVD 5264.26
INC 90.19 AZ 178.26

6000

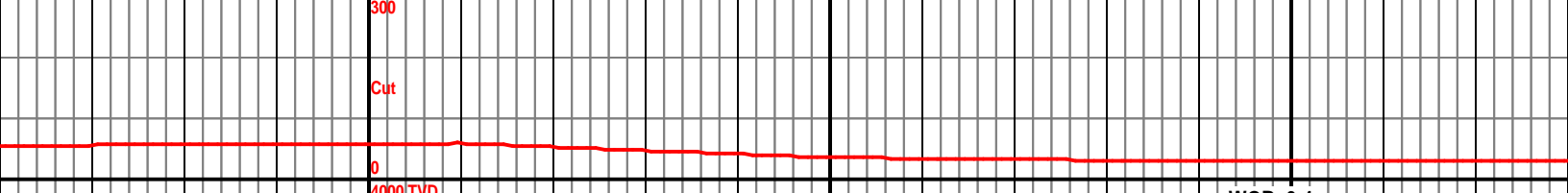
100
 SANDRIDGE ENERGY: SALLY 3420 2-12H Horizontal



10
 150
 ROP (min/ft)
 MWD Gamma (API)



300
 Cut
 4000 TVD



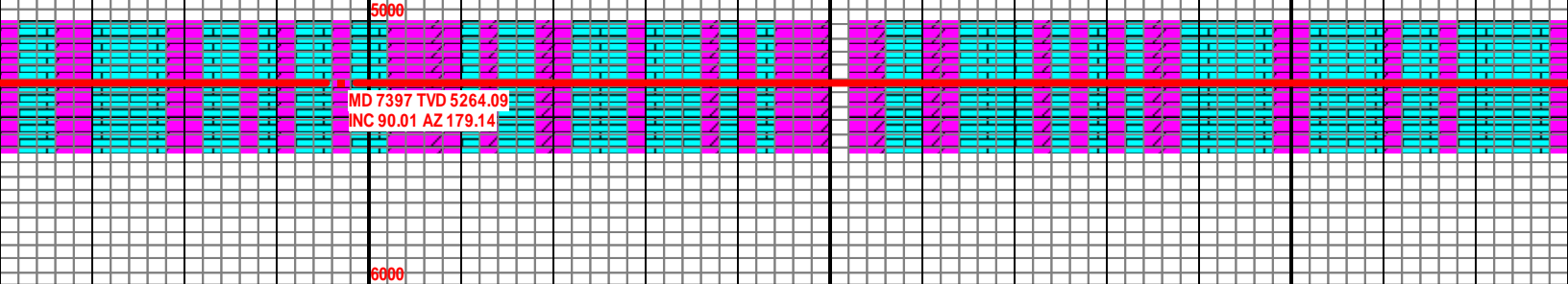
LS: BLKY, SLI FRI- MOD FRM,
 ED OFF WHT- WHT, OCC LT
 MOD FRM- MOD SFT, SME

LS: MSTLY OFF WHT- WHT, OCC LT TAN, SME OOL, SCAT FREE OIDS,
 PRED PLTY, MOD FRM- MOD SFT, SME FRM, INCRNG LITHO, MICRO FN- V
 FN XLN, DOL: MSTLY LT TAN- OFF WHT, SUCRO, BLKY, SLI FRI- MOD FRM,
 MICRO FN XLN, PR- FR INTRGRNLR POR, NO ODOR

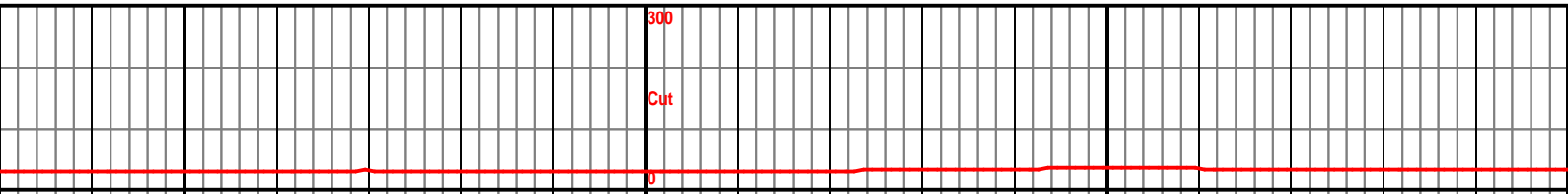
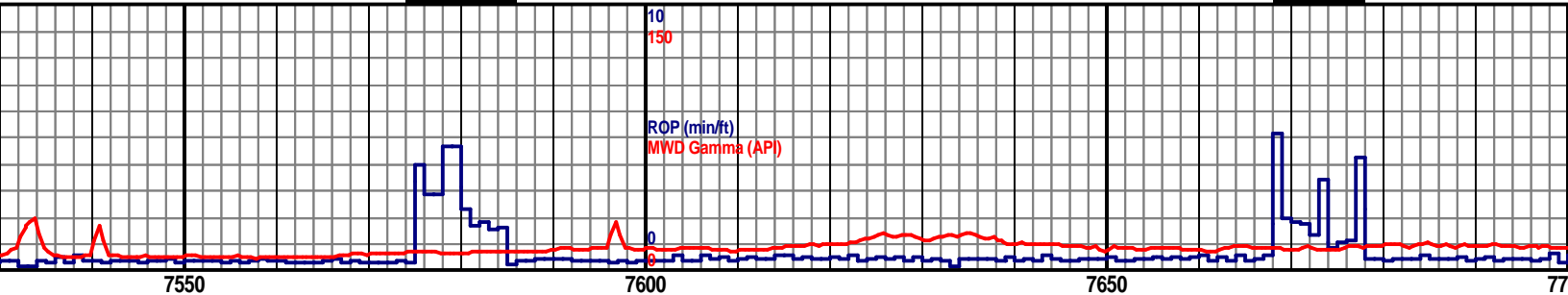
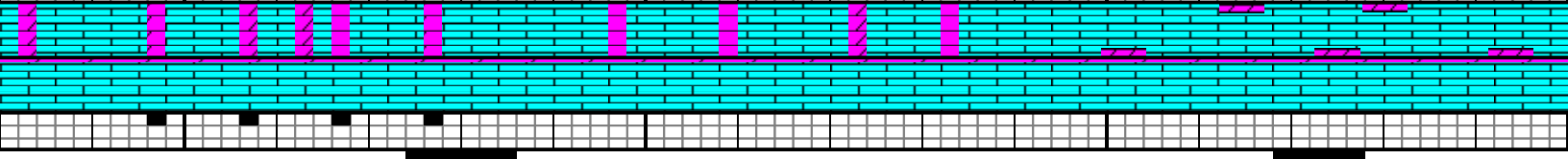
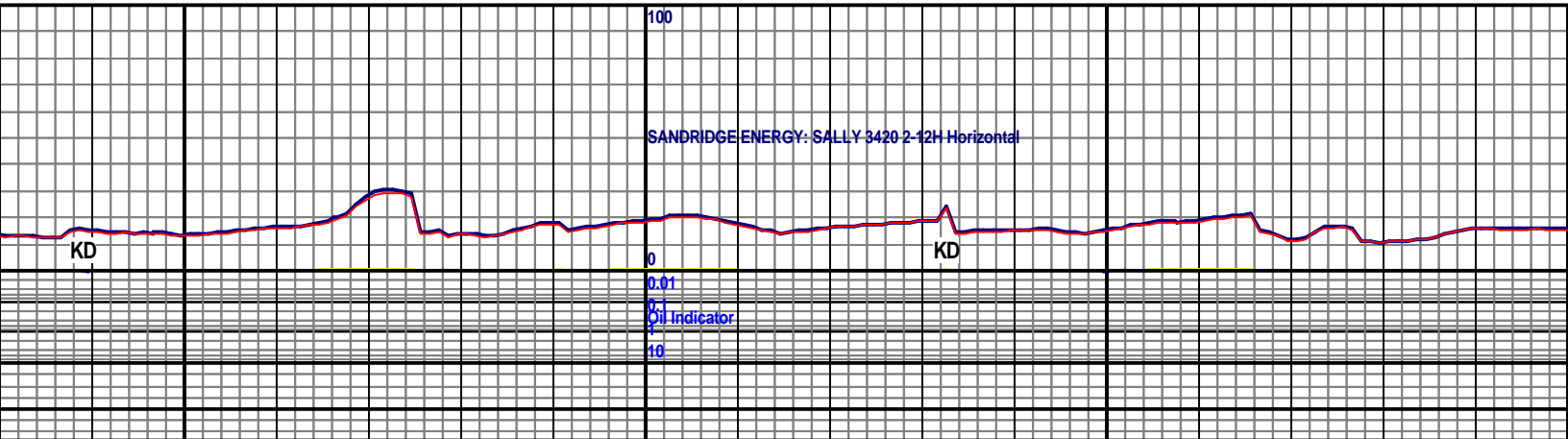
WOB: 6.4
 RPM: 70
 SPM: 71
 PP: 1952
 GPM: 292

LS: MSTLY OFF
 MSTLY PLTY, MC
 XLN, DOL: PRED
 MICRO FN XLN, I

5000
 MD 7397 TVD 5264.09
 INC 90.01 AZ 179.14

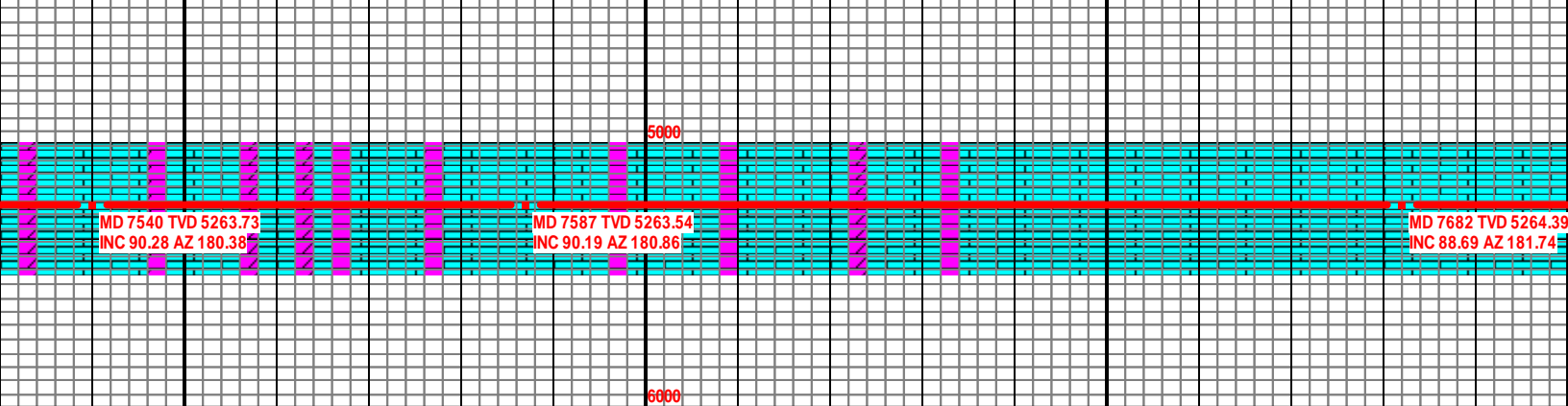


6000



WHT- WHT, SCAT LT TAN, OCC OOL, SCAT FREE OIDS,
 MOD FRM- MOD SFT, SME FRM, SME LITHO, MICRO FN- V FN
 LT TAN- OFF WHT, SCAT SUCRO, BLKY, MOD FRM- SLI FRI,
 PR INTRGRNLR POR

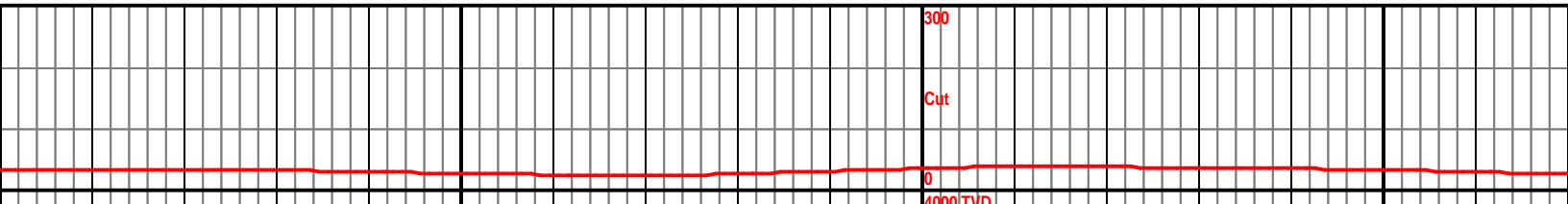
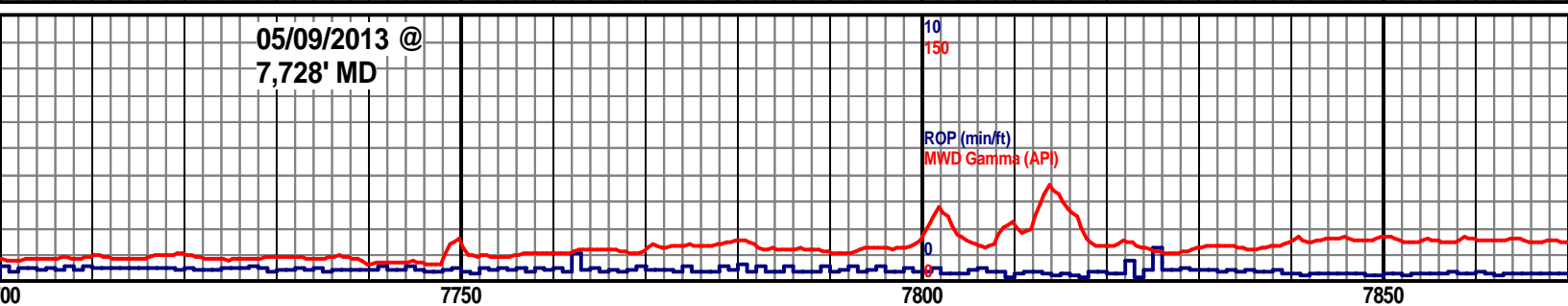
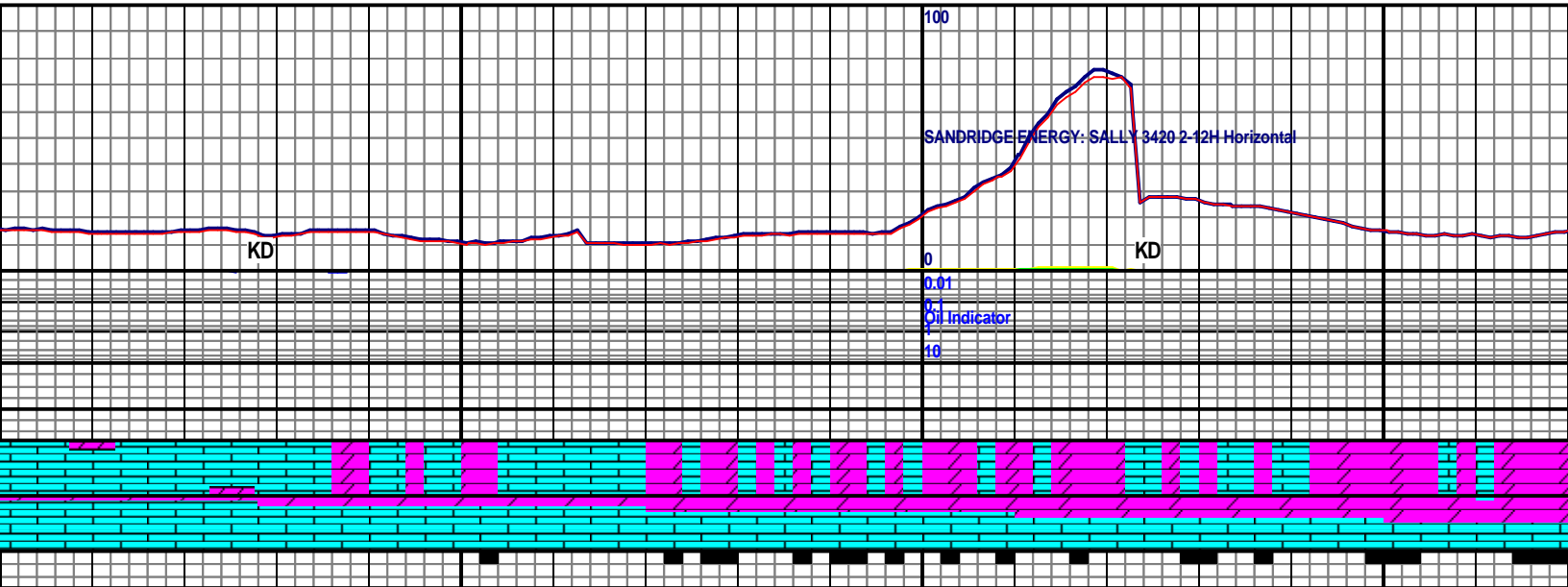
LS: MSTLY OFF WHT- WHT, SCAT LT TAN, OCC OOL, TR FREE OIDS, MSTLY
 PLTY, SME BLKY, MOD FRM- FRM, OCC MOD SFT, SME LITHO, MICRO FN- V FN
 XLN, DOL: PRED LT TAN- OFF WHT, BLKY, MSTLY MOD FRM, MICRO FN XLN



MD 7540 TVD 5263.73
 INC 90.28 AZ 180.38

MD 7587 TVD 5263.54
 INC 90.19 AZ 180.86

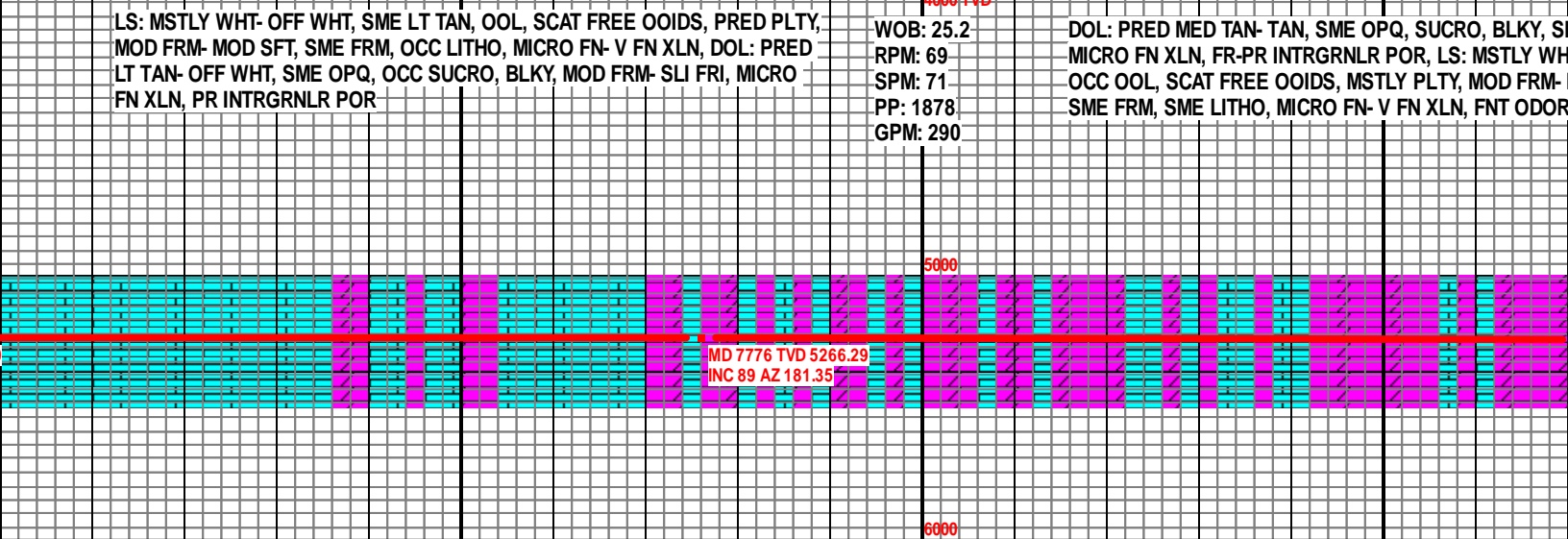
MD 7682 TVD 5264.39
 INC 88.69 AZ 181.74

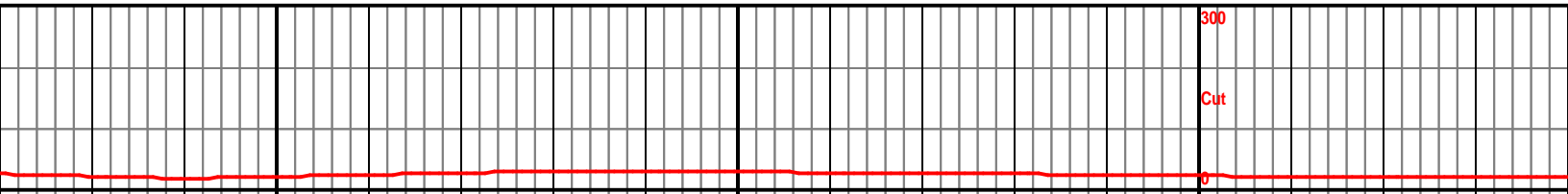
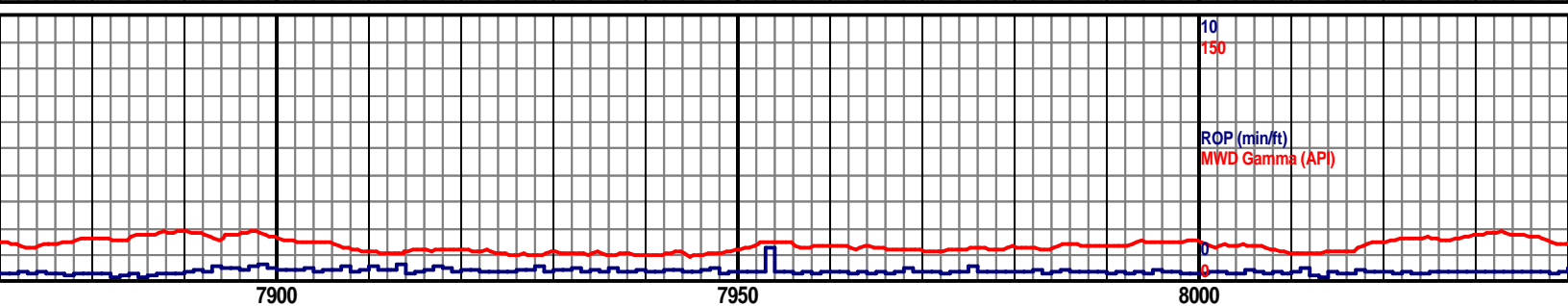
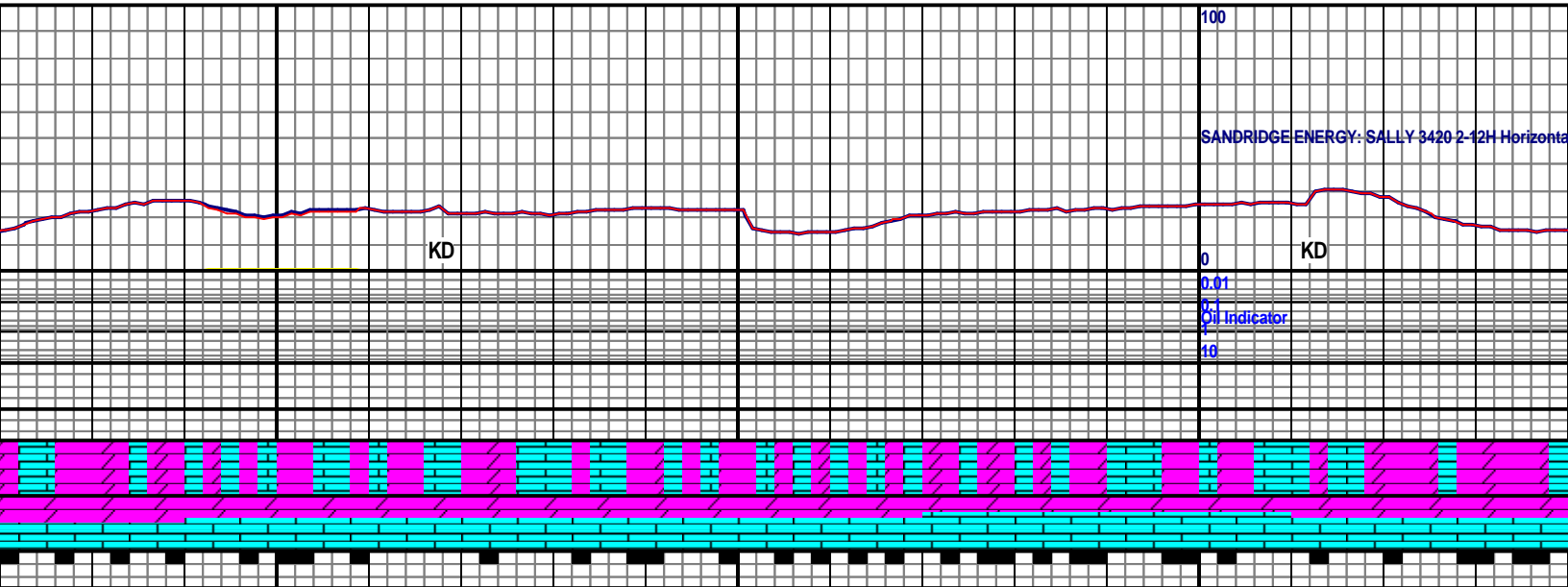


LS: MSTLY WHT- OFF WHT, SME LT TAN, OOL, SCAT FREE OIDS, PRED PLTY,
MOD FRM- MOD SFT, SME FRM, OCC LITHO, MICRO FN- V FN XLN, DOL: PRED
LT TAN- OFF WHT, SME OPQ, OCC SUCRO, BLKY, MOD FRM- SLI FRI, MICRO
FN XLN, PR INTRGRNLR POR

WOB: 25.2
RPM: 69
SPM: 71
PP: 1878
GPM: 290

DOL: PRED MED TAN- TAN, SME OPQ, SUCRO, BLKY, S
MICRO FN XLN, FR-PR INTRGRNLR POR, LS: MSTLY WH
OCC OOL, SCAT FREE OIDS, MSTLY PLTY, MOD FRM-
SME FRM, SME LITHO, MICRO FN- V FN XLN, FNT ODOR

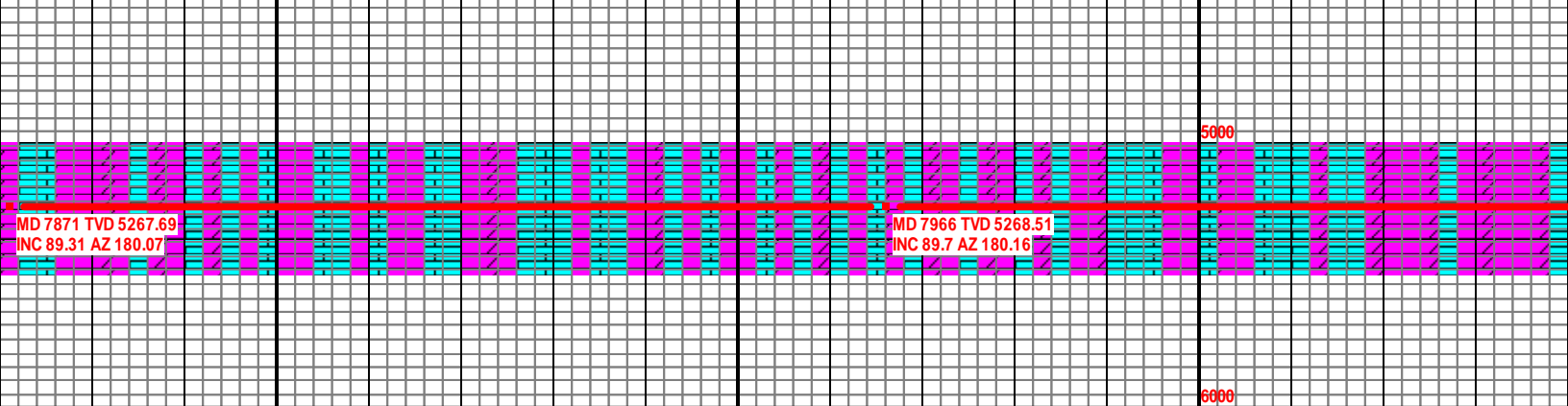




LI FRI- FRI,
 TT- OFF WHT,
 MOD SFT,

LS: MSLTY WHT- OFF WHT, SCAT LT TAN THRU OUT, SME OOL, OCC FREE
 OIDS, PRED PLTY, MOD FRM- MOD SFT, SME FRM, TR LITHO, MICRO FN-
 V FN XLN, DOL: PRED MED TAN- TAN, SME OPQ, SUCRO, BLKY, SLI FRI-
 FRI, MICRO FN XLN, FR-PR INTRGRNLR POR, FNT ODOR

DOL: PRED TAN- MED TAN
 XLN, FR-PR INTRGRNLR PO
 FREE OIDS, PRED PLTY,
 INCRNG ODOR



GAS SCALE
CHANGED 0
TO 300 @
8,080' MD

Scale Change
SANDRIDGE ENERGY-SALLY 3420 2-12H Horizontal

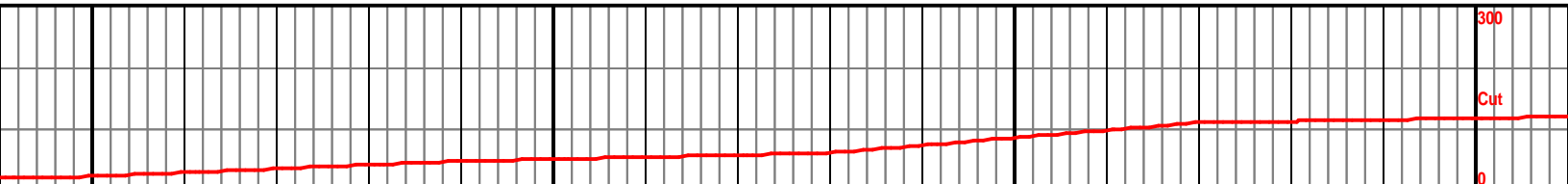
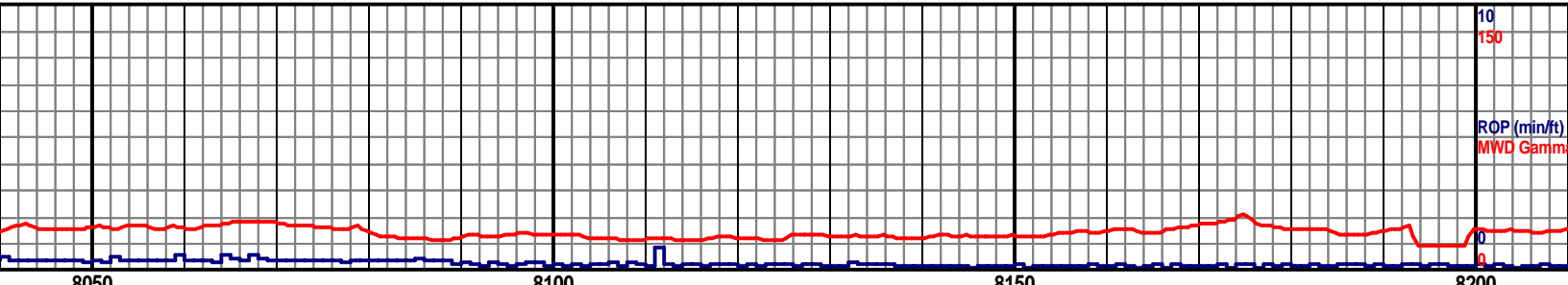
FG 206 U.

CG 352 U.

KD

KD

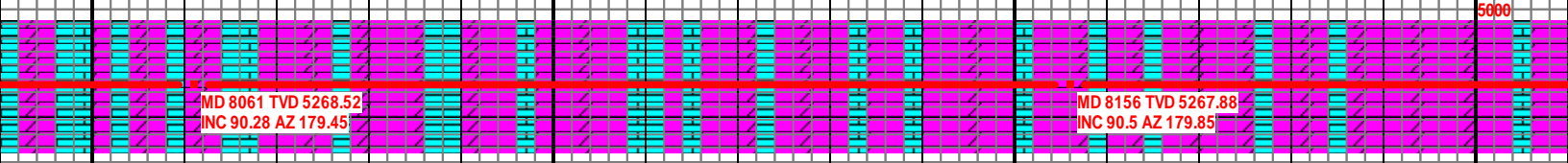
Oil Indicator
10



I, SME OPQ, SUCRO, BLKY, FRI- SLI FRI, MICRO FN
OR, LS: MSLTY OFF WHT- LT TAN, SME OOL, OCC
MOD FRM- MOD SFT, MICRO FN- V FN XLN,

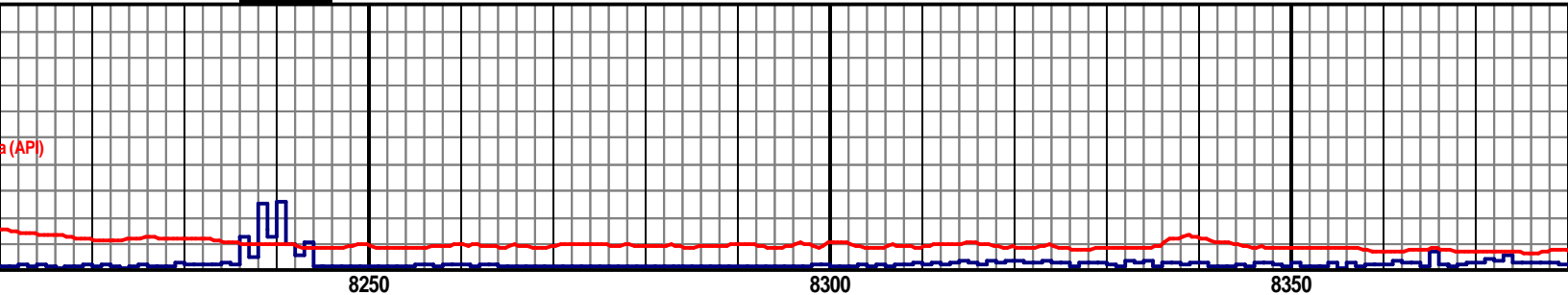
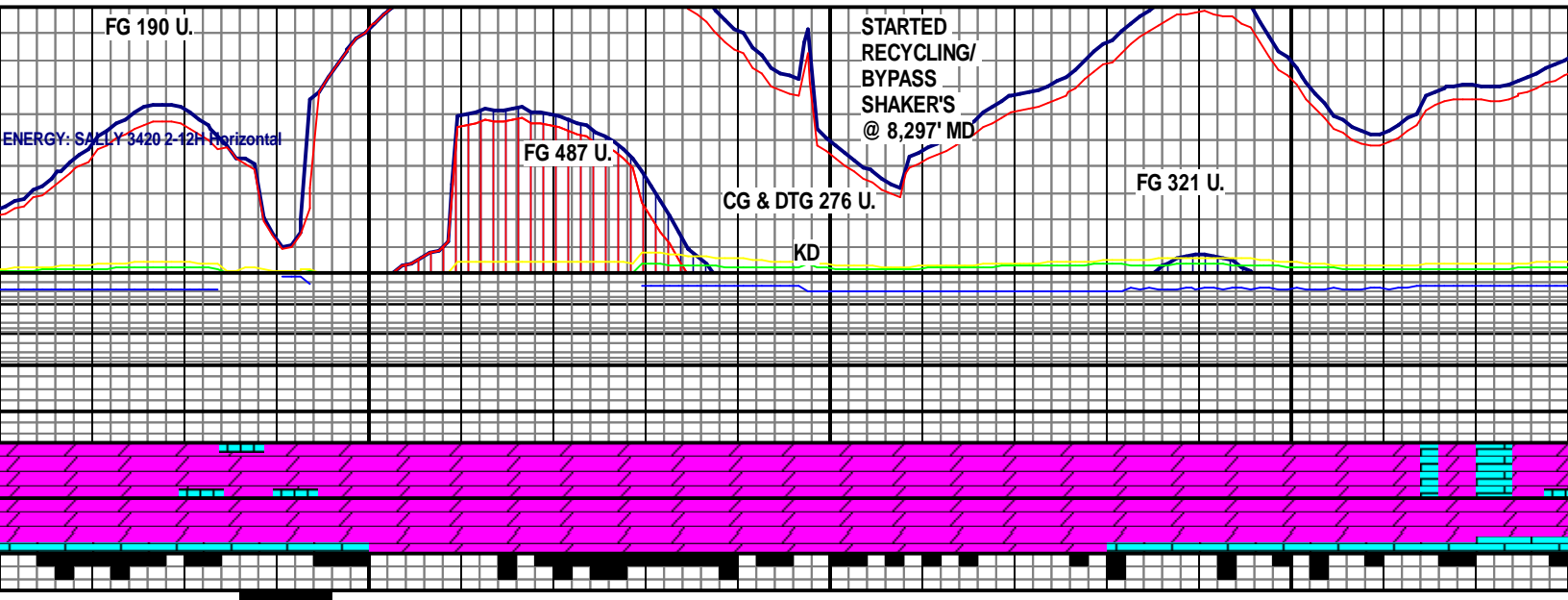
WOB: 23.1
RPM: 71
SPM: 70
PP: 2109
GPM: 286

DOL: MSTLY TAN- MED TAN, SME OPQ, SUCRO, BLKY, FRI- SLI FRI, MICRO FN XLN,
FR- GD INTRGRNLR POR, LS: MSLTY OFF WHT- LT TAN, SME OOL, OCC FREE OIDS,
PRED PLTY, MOD FRM- MOD SFT, MICRO FN- V FN XLN, SCAT HC STN, STRNG ODOR



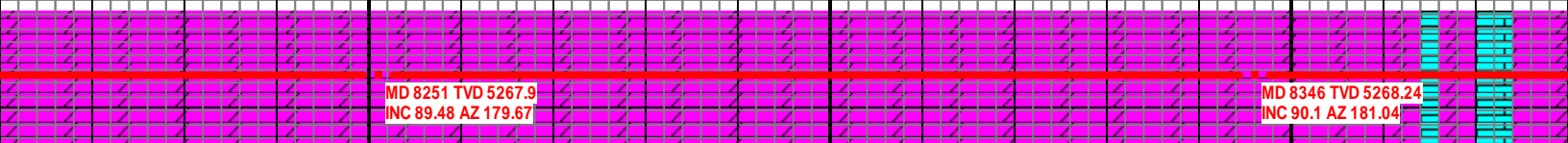
MD 8061 TVD 5268.52
INC 90.28 AZ 179.45

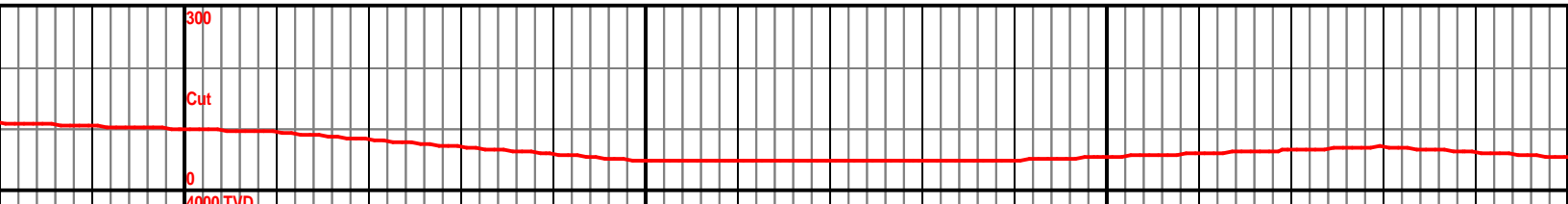
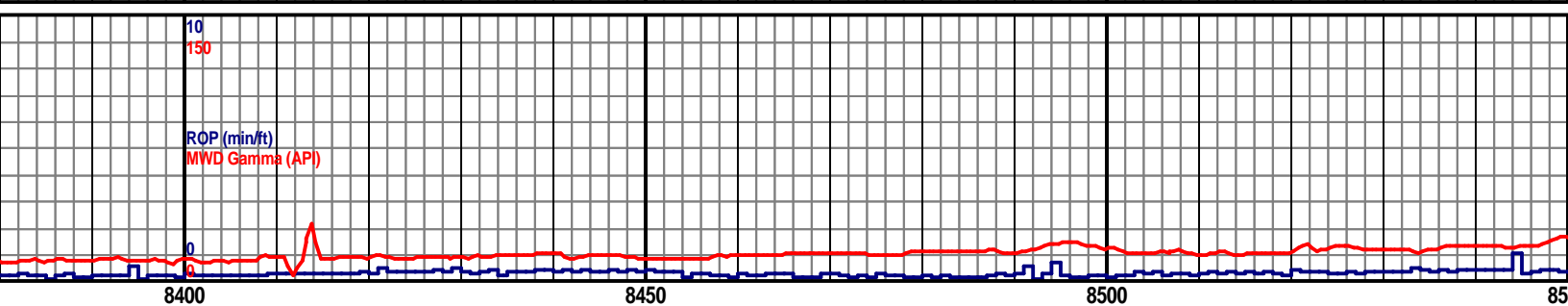
MD 8156 TVD 5267.88
INC 90.5 AZ 179.85



DOL: BRN- TAN, SCAT LT TAN THRU OUT, SUCRO, BLKY, FRI- SLI FRI,
 DCRG SLI FRI, MICRO FN XLN, GD- FR INTRGRNLR POR, HC STN |
 THRU OUT, STRNG O ODOR, LS: MSTLY OFF WHT, BLKY- PLTY, MOD
 FRM- MOD SFT, MICRO FN XLN

DOL: MSTLY BRN- TAN, INCRG LT TAN, SUCRO, PRED BLKY, FRI- SLI
 FRI, INCRG SLI FRI, MICRO FN XLN, FR- GD INTRGRNLR POR, DCRG
 HC STN, DCRG ODOR, LS: OFF WHT- WHT, BLKY- PLTY, MOD FRM-
 MOD SFT, MICRO FN- V FN XLN

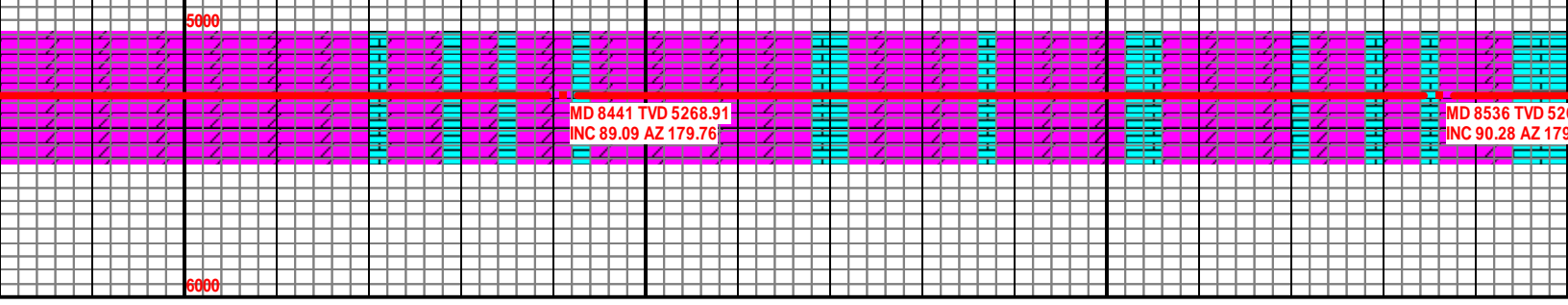


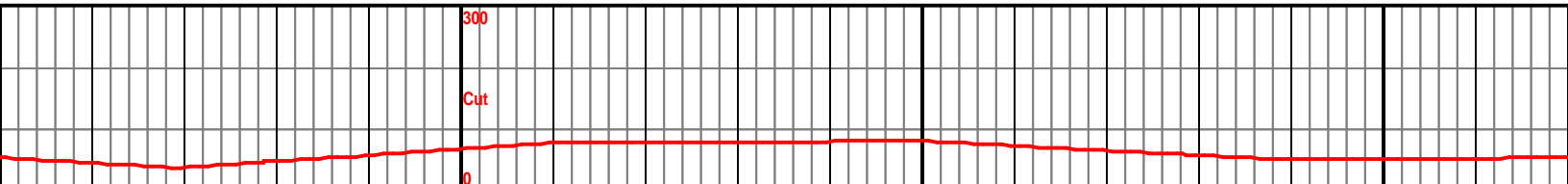
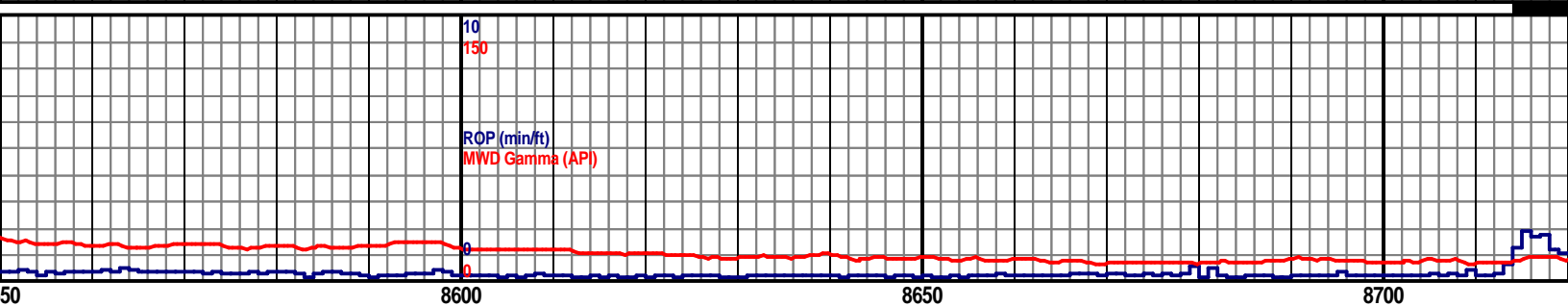
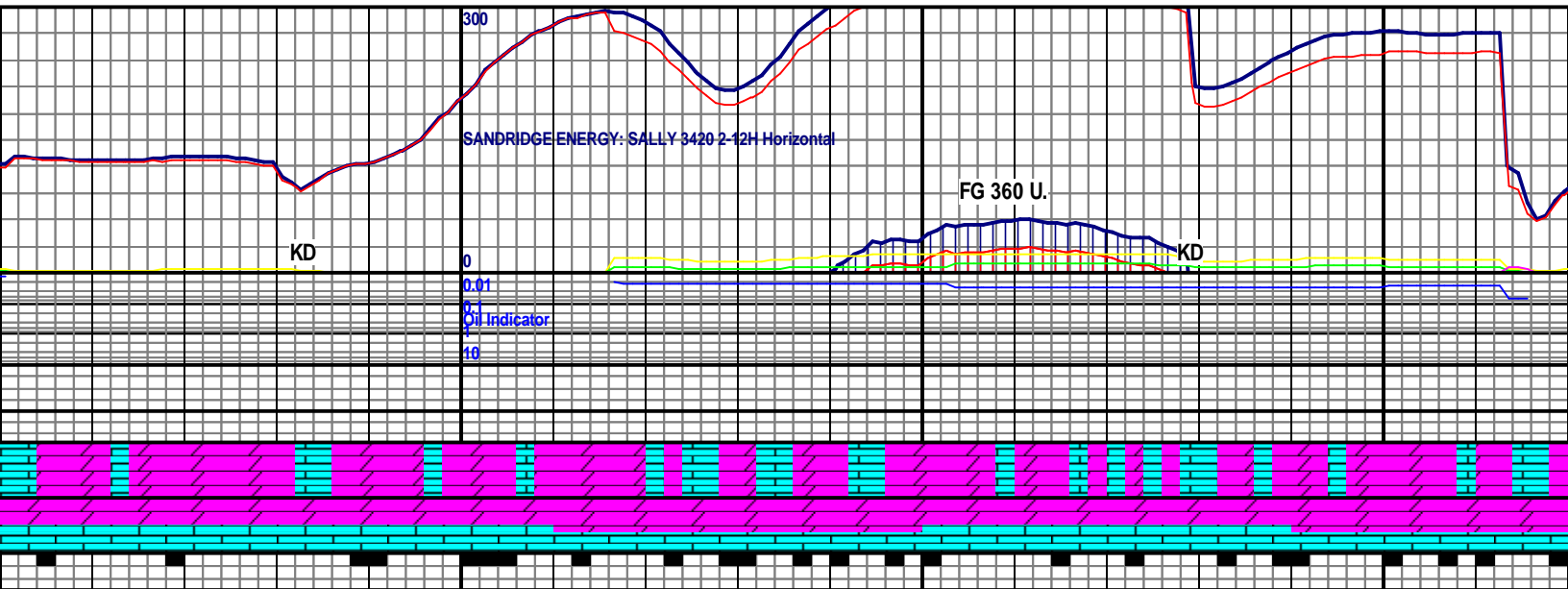


WOB: 14.3
 RPM: 68
 SPM: 70
 PP: 2210
 GPM: 286

DOL: PRED TAN- BRN, INCRG LT TAN, SUCRO, BLKY, SLI FRI- FRI,
 MICRO FN XLN, FR INTRGRNLR POR, OCC HC STN, NO ODOR, LS: PRED
 OFF WHT- LT TAN, OOL, OCC OIDS, BLKY- PLTY, MOD FRM- MOD SFT,
 MICRO FN- V FN XLN

DOL: MSTLY LT TAN- BRN, BCMG LT T
 FRI- SLI FRI, FR- PR INTRGRNLR POR
 PRED OFF WHT- LT TAN, OOL, SCAT
 MOD SFT, MICRO FN- V FN XLN



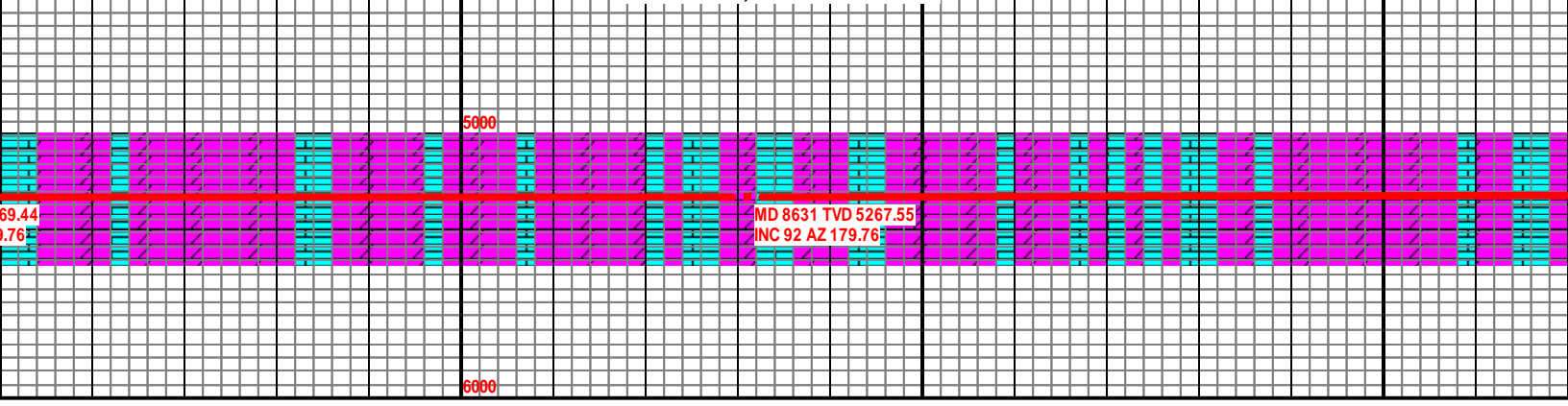


TAN, DCRG BRN, SUCRO, BLKY, SCAT HC STN, NO ODOR, LS: OIDS, BLKY- PLTY, MOD FRM-

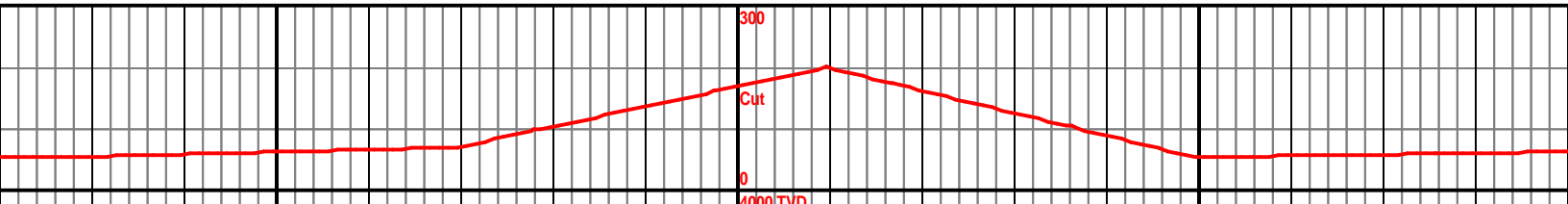
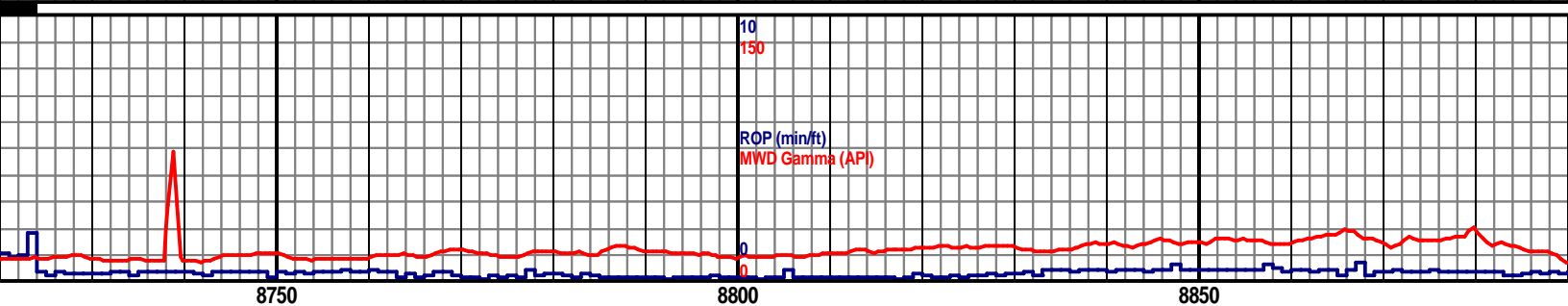
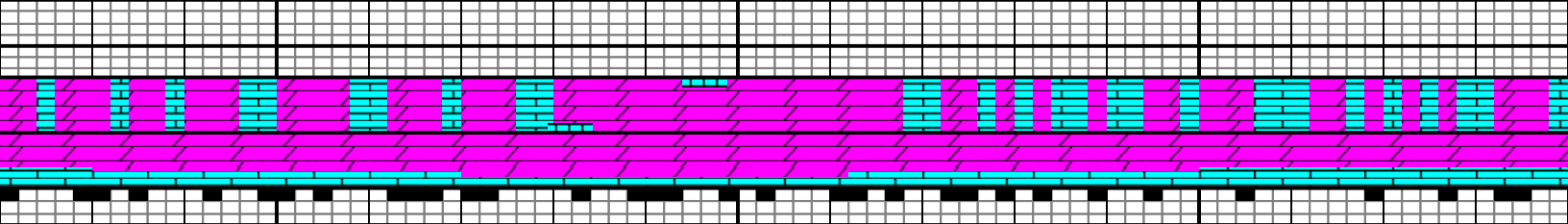
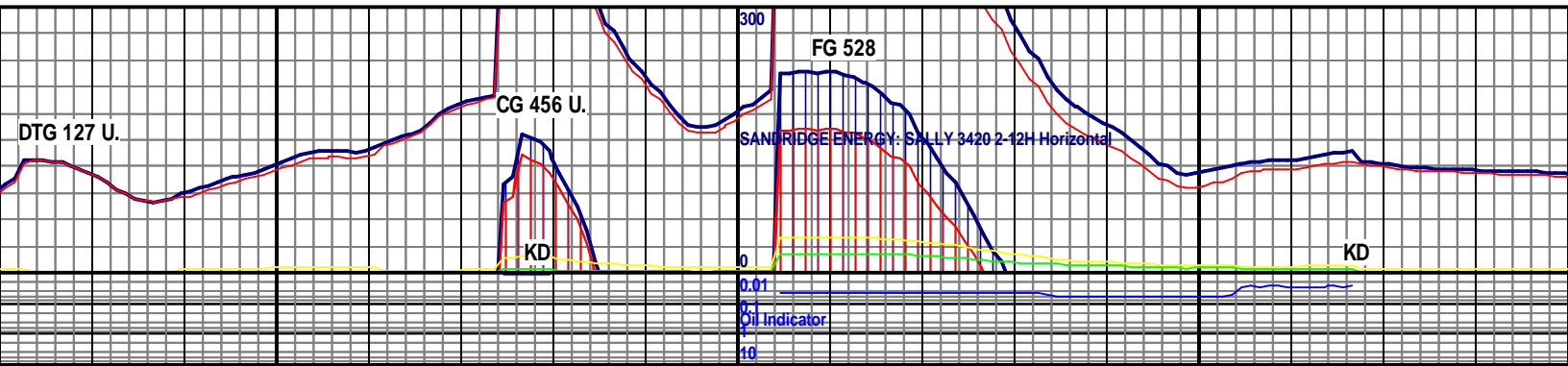
DOL: PRED LT TAN- MED TAN, SCAT BRN THRU OUT, SUCRO, BLKY, SLI FRI- FRI, INCRG FRI, MICRO FN XLN, GD INTRGRNLR POR, LS: OFF WHT- LT TAN, OOL, SME OIDS, BLKY- PLTY, MOD FRM- MOD SFT, MICRO FN- V FN XLN

WOB: 20.6
RPM: 76
SPM: 71
PP: 2323
GPM: 292

DOL: M
FRI- SL
SCAT H
OCC O

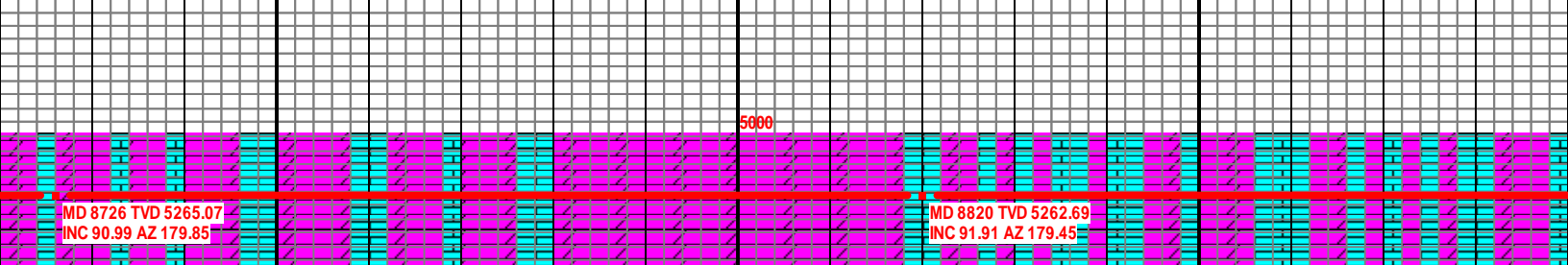


69.44
0.76



STLY MED TAN- LT TAN, SCAT BRN THRU OUT, SUCRO, BLKY, FRI, MICRO FN XLN, GD- FR INTRGRNLR POR, TR PP VUG POR, C STN, MOD STRNG ODOR, LS: OFF WHT- WHT, TR LT TAN, OOL, OIDS, BLKY- PLTY, MOD FRM- MOD SFT, MICRO FN- V FN XLN

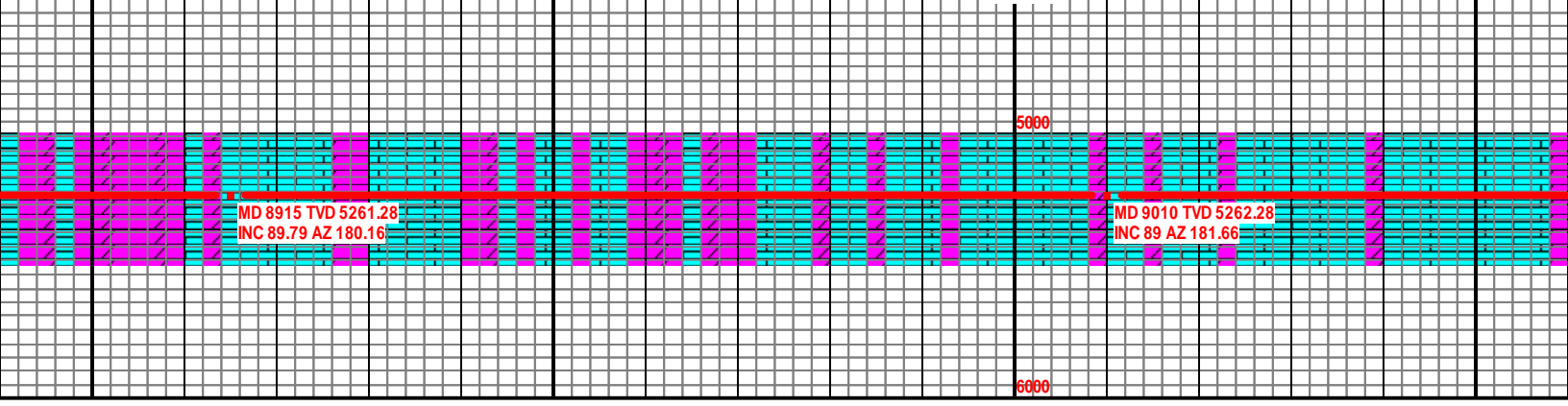
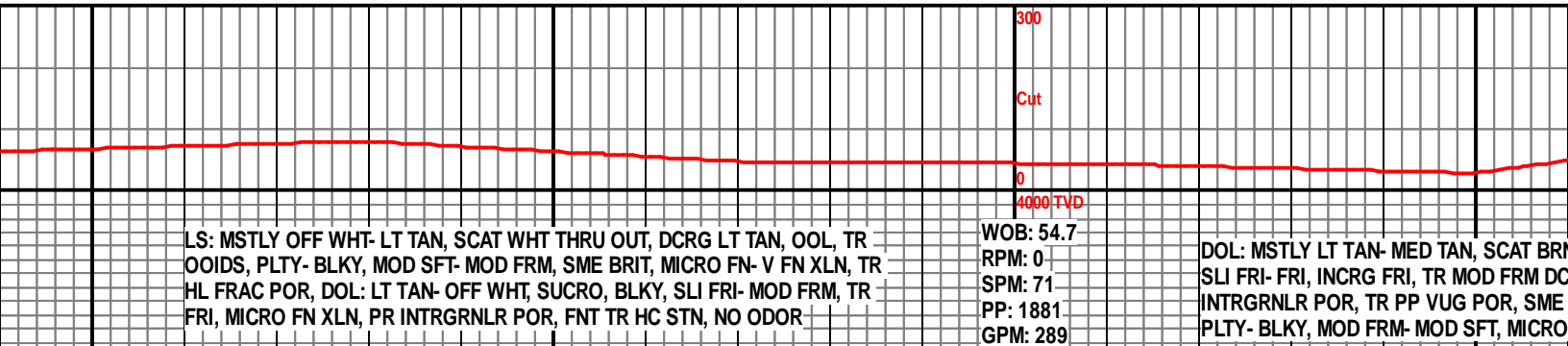
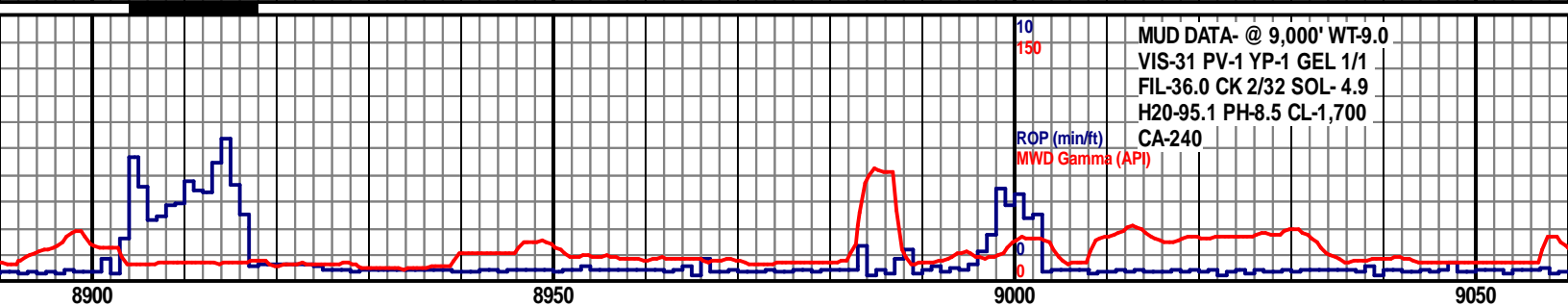
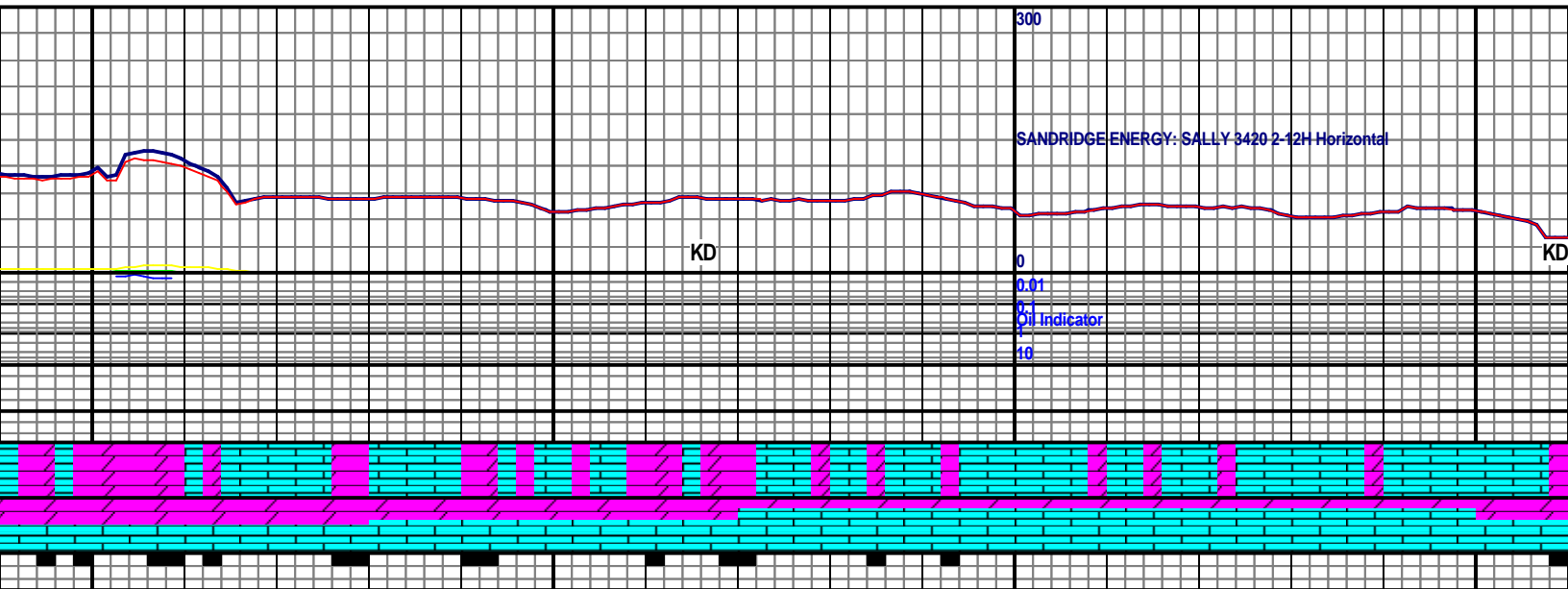
DOL: PRED LT TAN- MED TAN, DCRG MED TAN, BCMG LT TAN- OFF WHT, SUCRO, BLKY, FRI- SLI FRI, OCC MOD FRM, MICRO FN XLN, FR- PR INTRNLR POR, TR PP VUG POR, TR HC STN, FNT ODOR- NO ODOR, LS: OFF WHT- LT TAN, OOL, OCC OIDS, BLKY- PLTY, MOD FRM- MOD SFT, MICRO FN- V FN XLN

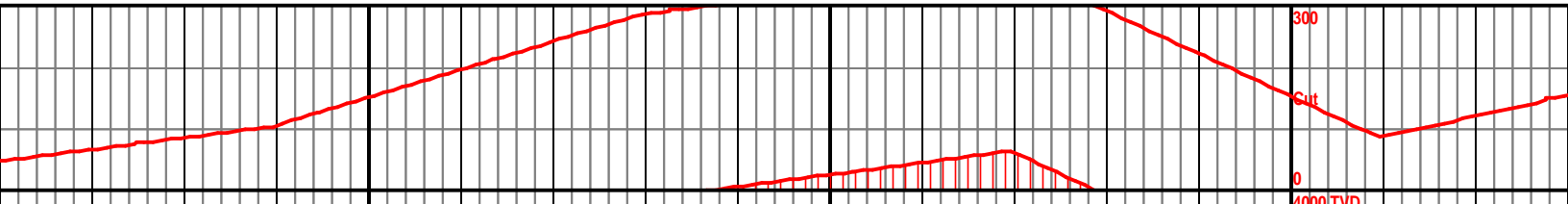
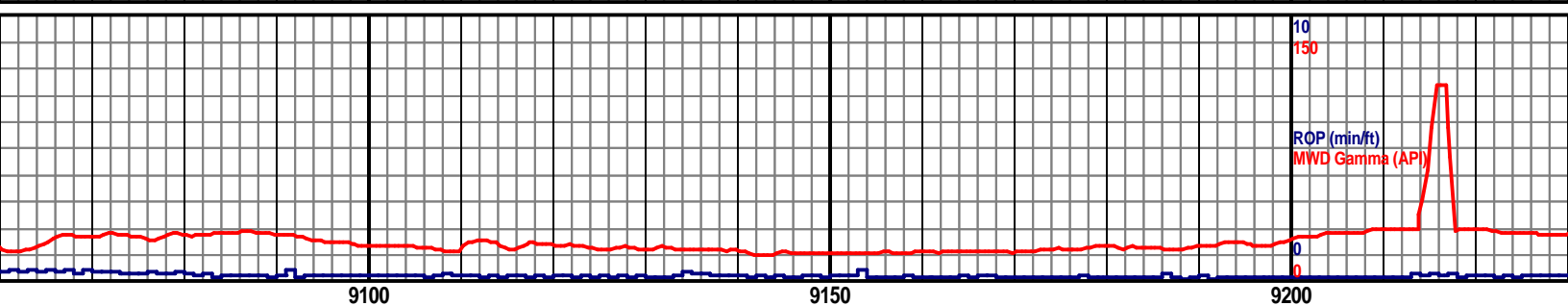
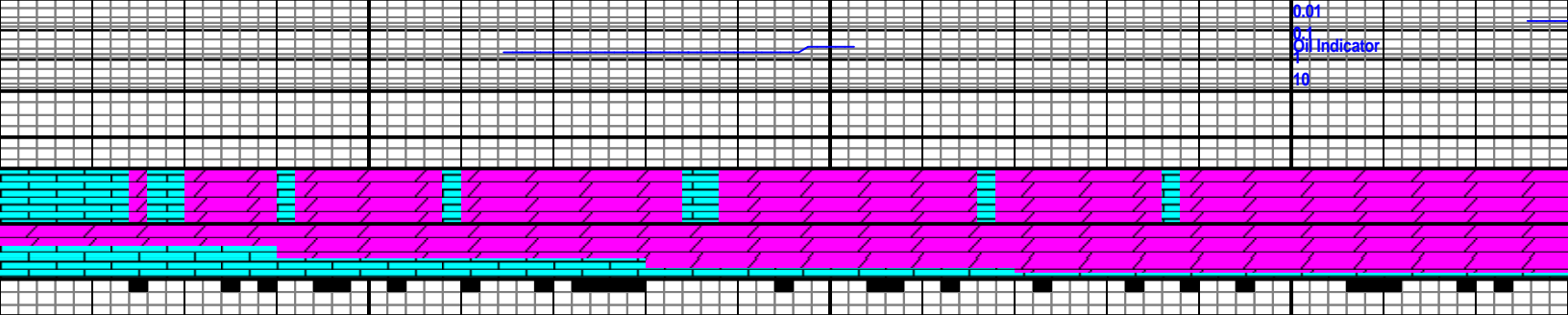
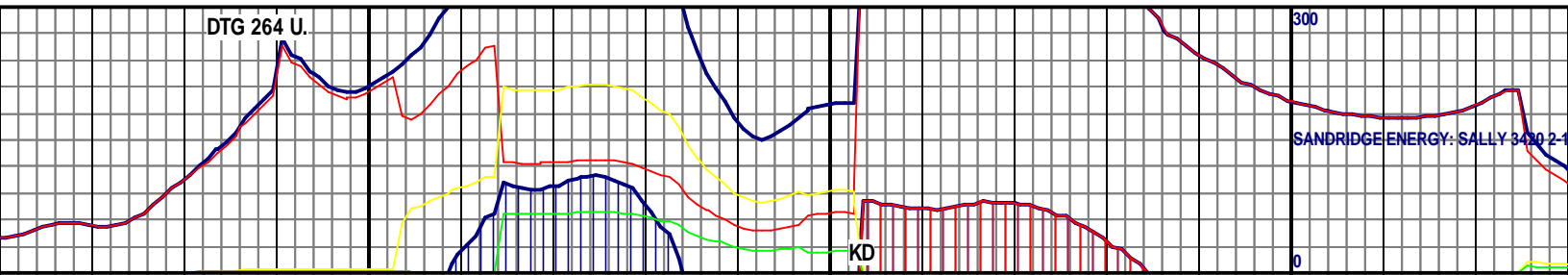


MD 8726 TVD 5265.07
INC 90.99 AZ 179.85

MD 8820 TVD 5262.69
INC 91.91 AZ 179.45

6000

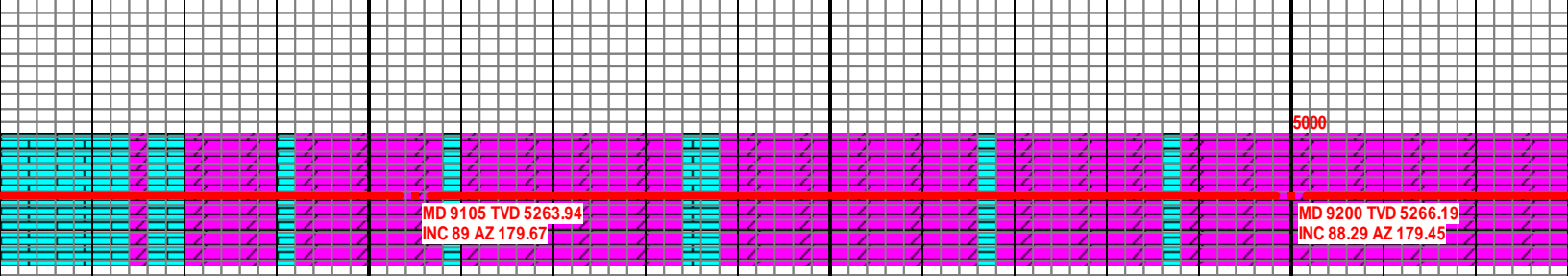


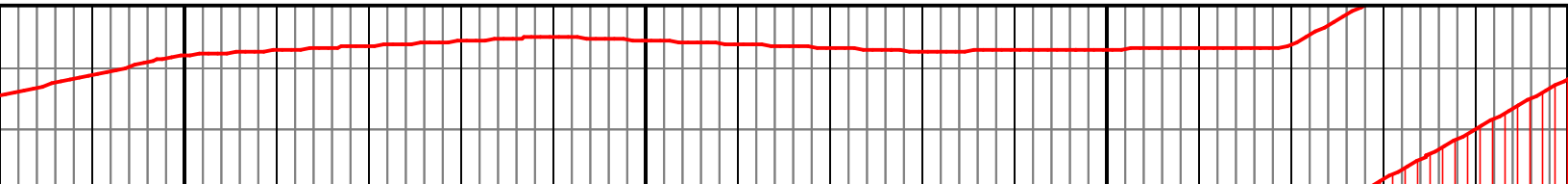
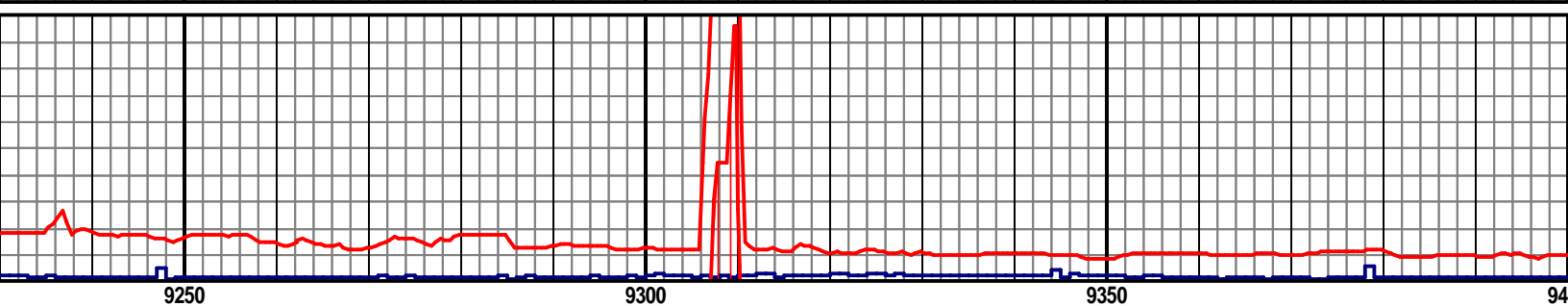
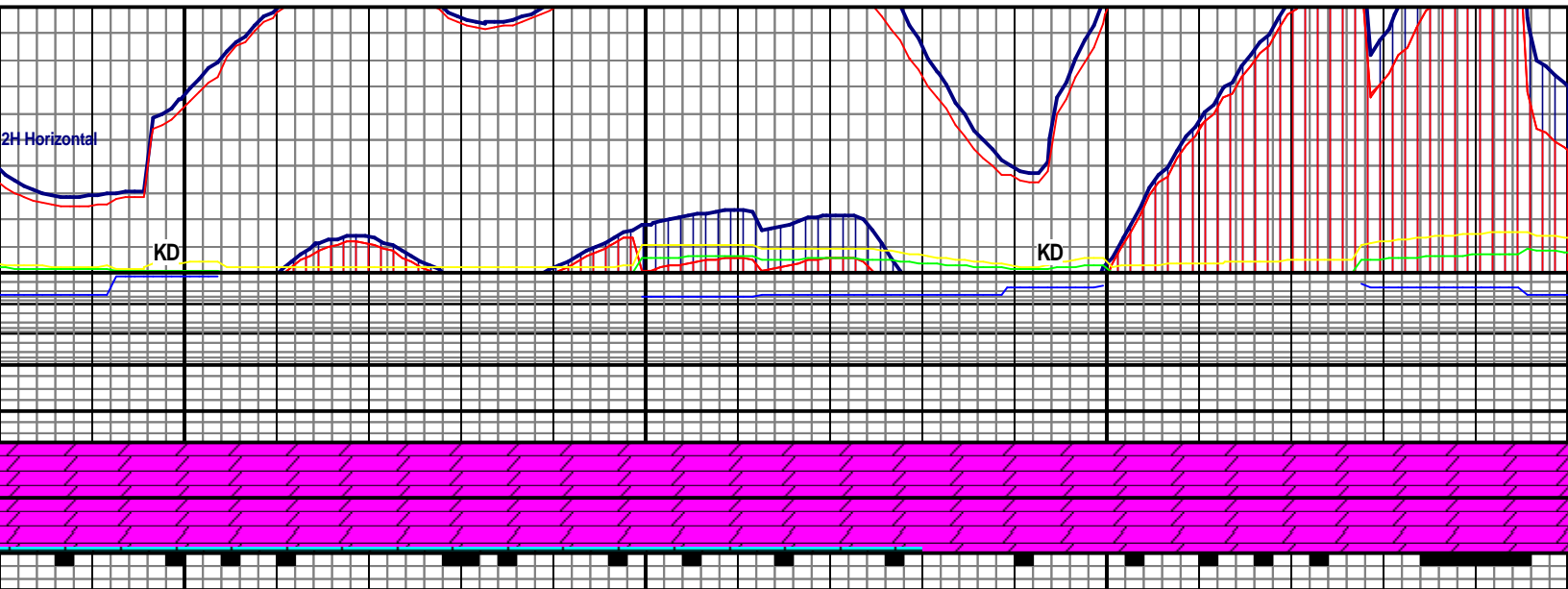


THRU OUT, SUCRO, BLKY, RG, MICRO FN XLN, FR HC STN, LS: OFF WHT- WHT, FN XLN

DOL: TAN- BRN, SUCRO, BLKY, MSTLY FRI, OCC SLI FRI, MICRO FN XLN, GD- FR INTRGRNLR POR, OCC PP VUG POR, INCRG SLI ODOR, LS: OFF WHT, PLTY- BLKY, MOD FRM- MOD SFT, MICRO FN- V FN XLN

DOL: LT TAN, MICRO FN XLN, HC STN, FNT

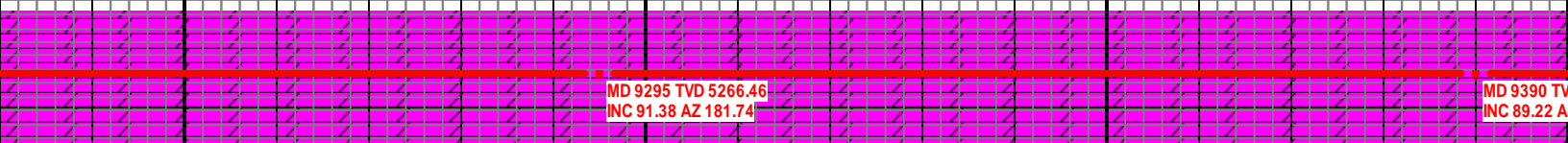




MED TAN SCAT BRN, SUCRO, BLKY, FRI- SLI FRI,
 N, FR- GD INTRGRNLR POR, SME PP VUG POR, TR
 ODOR

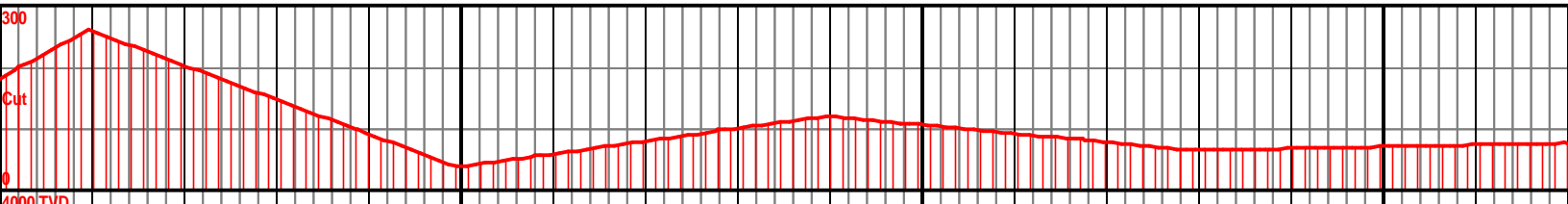
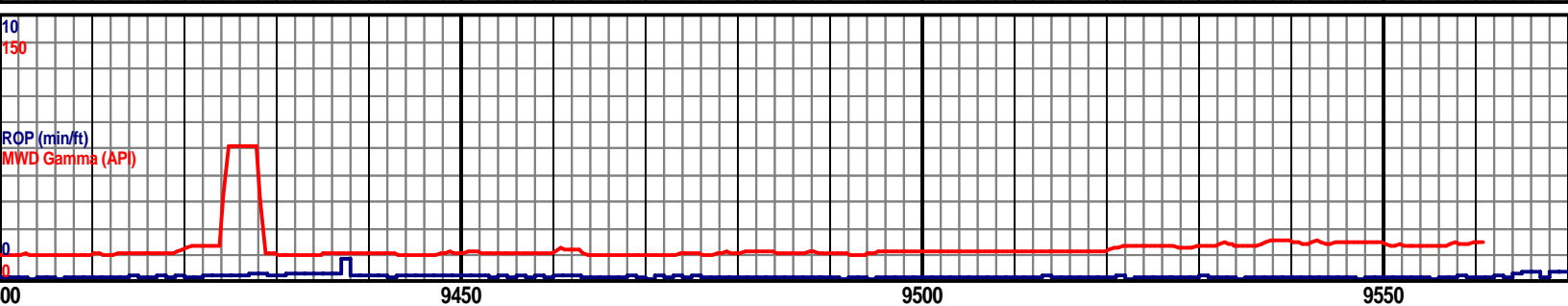
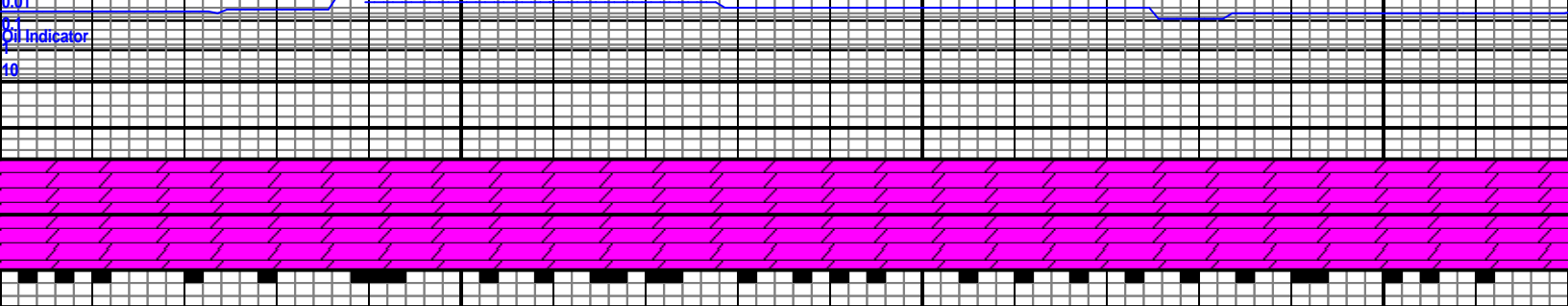
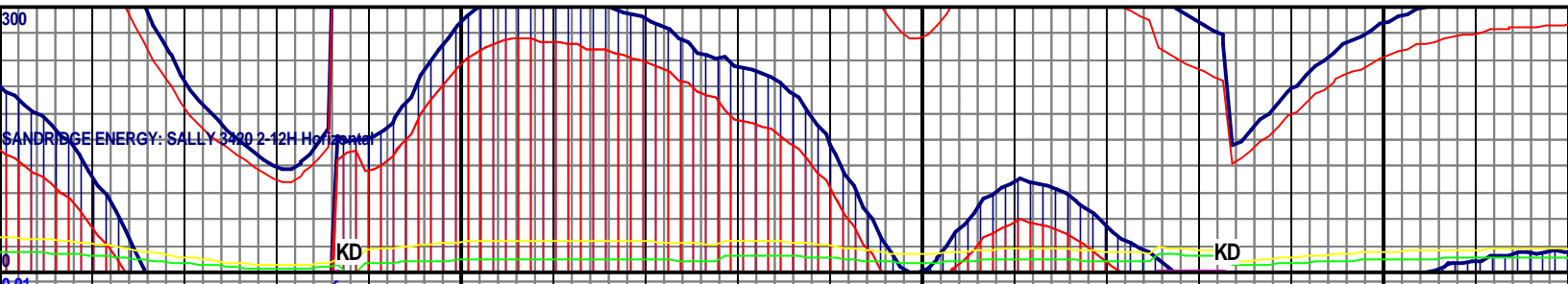
WOB: 18.0
 RPM: 77
 SPM: 72
 PP: 2458
 GPM: 313

DOL: PRED LT TAN, SCAT MED- DRK TAN THRU OUT, OCC BRN, SUCRO,
 BLKY, FRI, OCC SLI FRI, MICRO FN XLN, GD INTRGRNLR POR, SCAT HC
 STN, OCC PP VUG POR, TR LS: WHT- OFF WHT, PLTY- BLKY, MOD SFT-
 MOD FRM, MICRO FN XLN



MD 9295 TVD 5266.46
 INC 91.38 AZ 181.74

MD 9390 TV
 INC 89.22 A



4000 TVD

DOL: MSTLY MED TAN- LT TAN, SME DK TAN THRU OUT, OCC BRN, SUCRO, BLKY, FRI, SME SLI FRI, MICRO FN XLN, GD- FR INTRGRNLR POR, SCAT HC STN, SME PP VUG POR, TR LS: PRED WHT- OFF WHT, PLTY, MOD SFT- MOD FRM, MICRO FN XLN

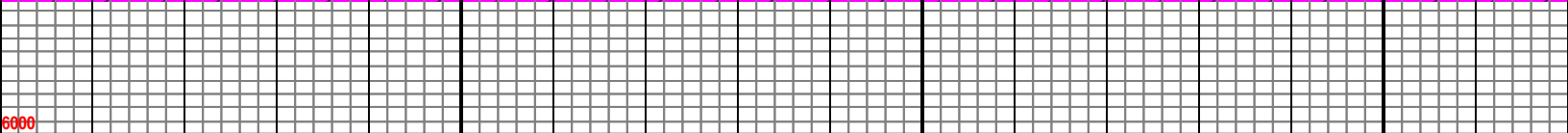
DOL: PRED LT TAN- MED TAN, DK TAN THRU OUT, TR BRN, S SLI FRI, MICRO FN XLN, GD- FR INTRGRNLR POR, SCAT HC S POR, TR LS: MSTLY WHT- OFF WHT, PLTY, MOD SFT- MOD FR

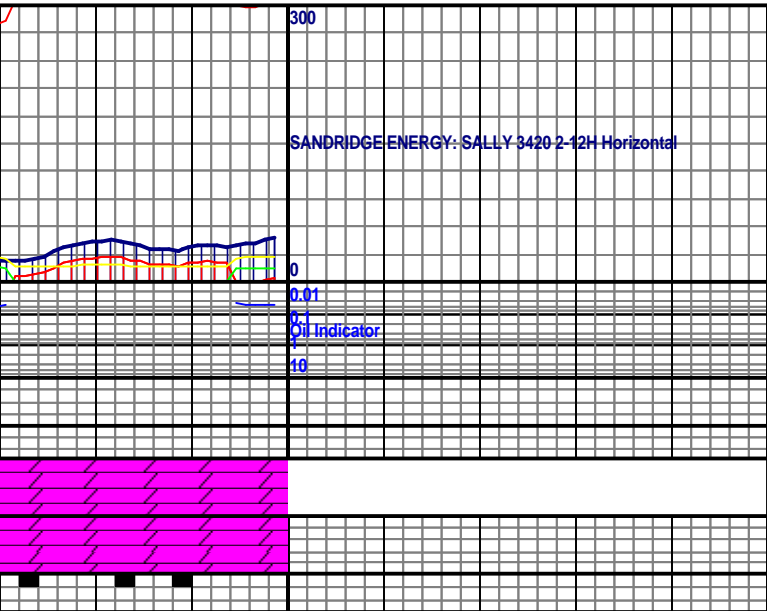
5000

MD 5265.96
Z 182.45

MD 9485 TVD 5268.68
INC 87.5 AZ 181.48

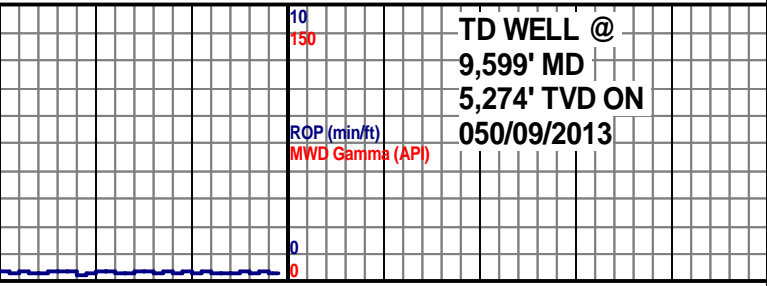
MD 9551 TVD 5271.79
INC 87.1 AZ 180.78





SANDRIDGE ENERGY: SALLY 3420 2-12H Horizontal

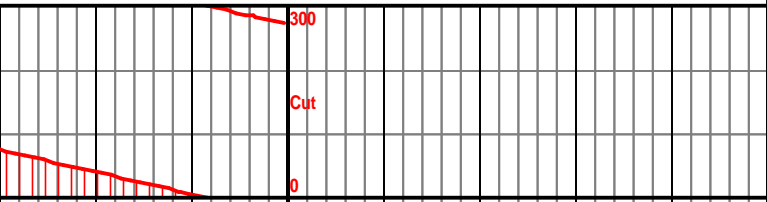
0.01
Oil Indicator
0
10



TD WELL @
9,599' MD
5,274' TVD ON
050/09/2013

ROP (min/ft)
MWD Gamma (API)

9600 96

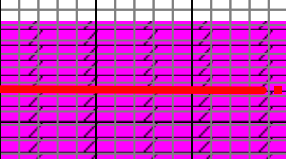


Cut

UCRO, BLKY, FRI-
STN, OCC PP VUG
RM, MICRO FN XLN

SANDRIDGE ENERGY INC.
SALLY 3420 2-12H SEC
12-T34S-R20W COMANCHE
CO. KANSAS

1,791' GR 1,811' KB



5000

PTB

MD 9599 TVD 5274.22
INC 87.1 AZ 180.78

6000