

GEOLOGIST

Name: Maggie Roden
Company: Sandridge Energy, Inc
Address: 123 Robert S. Kerr Avenue, Ste. 2430
Oklahoma City, Oklahoma 73102-6406

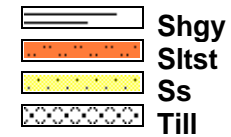
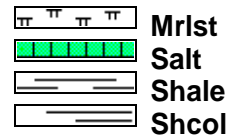
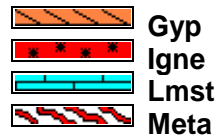
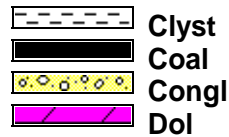
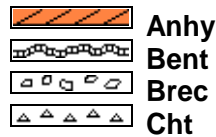
Cores

DSTs

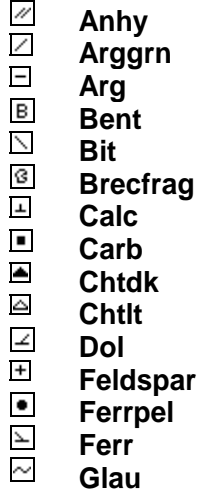
Comments

Trailer 28.

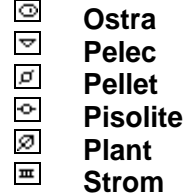
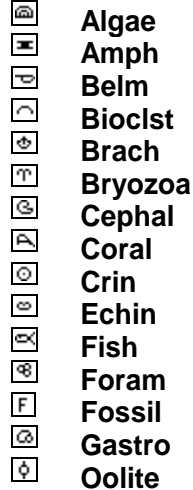
ROCK TYPES



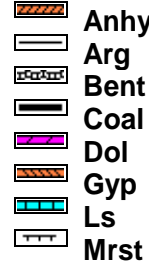
MINERAL



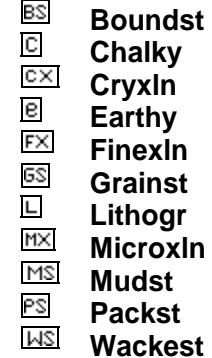
FOSSIL



STRINGER



TEXTURE



OTHER SYMBOLS

POROSITY

- E Earthy
- Fenest
- F Fracture
- X Inter
- ⊗ Moldic
- Organic
- P Pinpoint

- V Vuggy

SORTING

- W Well
- M Moderate
- P Poor

ROUNDING

- R Rounded
- r Subrnd
- a Subang
- A Angular

OIL SHOW

- Even

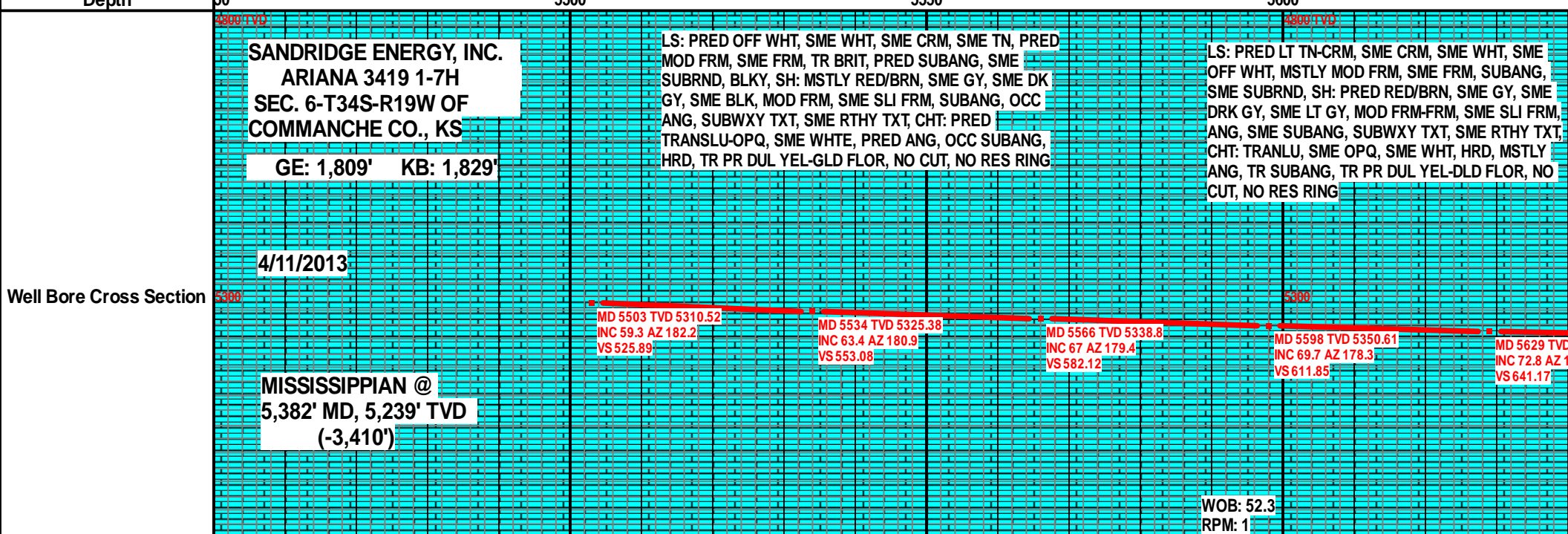
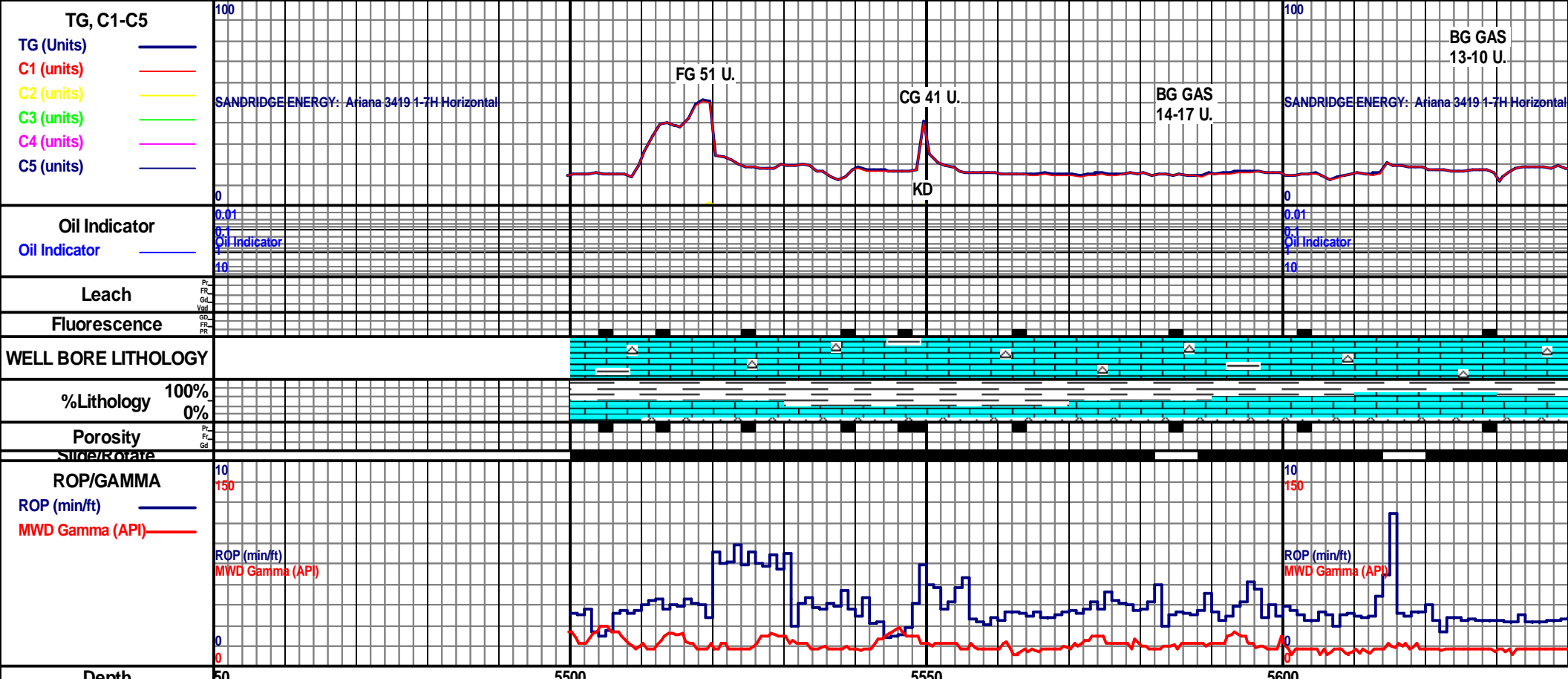
- ⊙ Spotted
- Ques
- D Dead

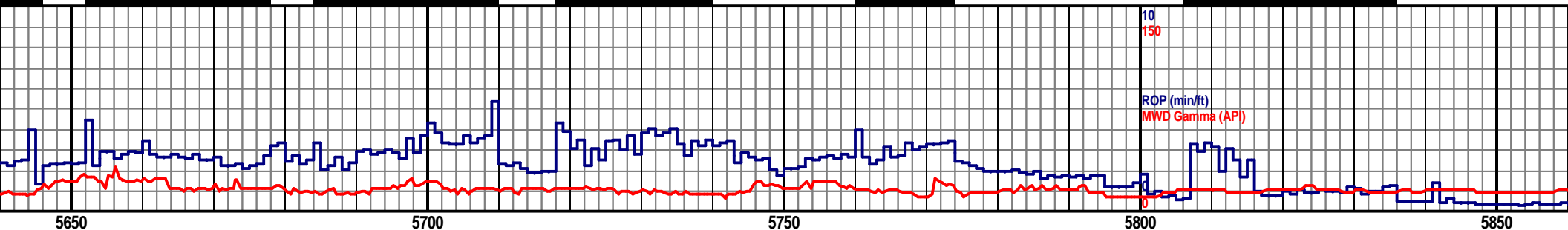
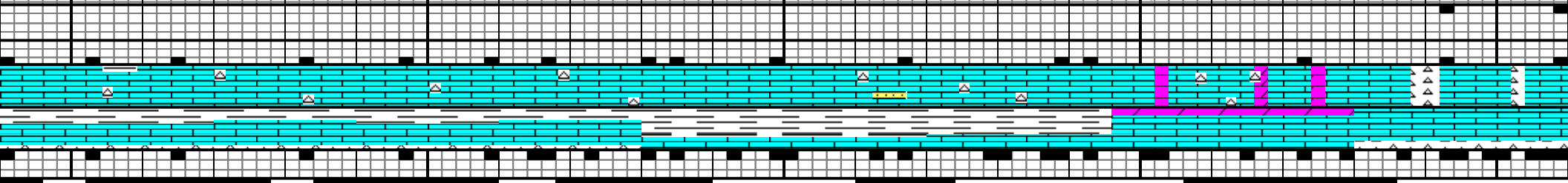
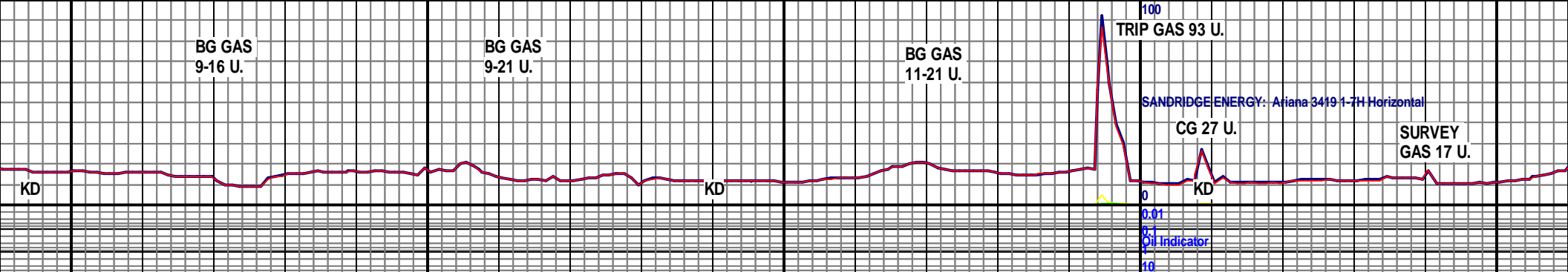
INTERVAL

- Core
- Dst

EVENT

- ▽ Rft
- ▴ Sidewall





LS: MOSTLY OFF WHT-TN, SME WHT, SME CRM, PRED MOD FRM, TR FRM, PRED SUBANG, OCC SUBRND, SH: MSTLY RED/BRN, SME GY, SME DRK GY, MOD FRM, SME FRM, SME BRIT, PRED ANG, SME SUBANG, SME SUBWXY TXT, TR RTHY TXT, CHT: MSTLY WHT-OPQ, SME TRANSLU, PRED HRD, OCC V FRM, PRED ANG, TR SUBANG, TR PR DUL YEL-GLD FLOR, NO VIS CUT, NO RES RING

SH: PRED RED- BRN W/ V SLI ORNG TNT, SME DRK BRN- RED, SME GRY- LT GRY, OCC DRK GRY, TR V DRK GRY- SLI BLK, MOD FRM- SLI FRM, SME SLI SFT, SUBANG, OCC ANG- SUBRND, BLKY- CHNKY, WXY, SME SUBWXY, SMTH TXT, LS: LT TAN- CRM, SME CRM- LT GRY, OCC WHT, OCC W/ SLI YEL/BRN STN, FRM- MOD FRM, SUBANG- SUBRND, TR ANG, V FN- MIC FN XLN, BLKY, TR PR FRAC POR, TR YEL- SLI GLD FLOR, NO CUT, NO RESD RING

WOB: 22.6
RPM: 23
PP: 1910
SPM: 73

LS: MSTLY DRTY WHT, SME CRM, SME OFF WH SUBANG- SUBRND, MSTLY BLKY, V FN- MIC FN POR, TR VUG POR, CHT: MSTLY WHT- OFF WH BLKY- CHNKY, OCC W/ V PRLY FRMD CHRTIFIED SME CRM- LT GRY, MOD FRM- FRM, SME SLI FR SLI TR V PR DLL LT YEL FLOR, V PR V SLO FNT VIS RESD RING

TD FOR INTERMEDIATE CASING @ 5,795'

7" CASING SET @ 5,778' MD

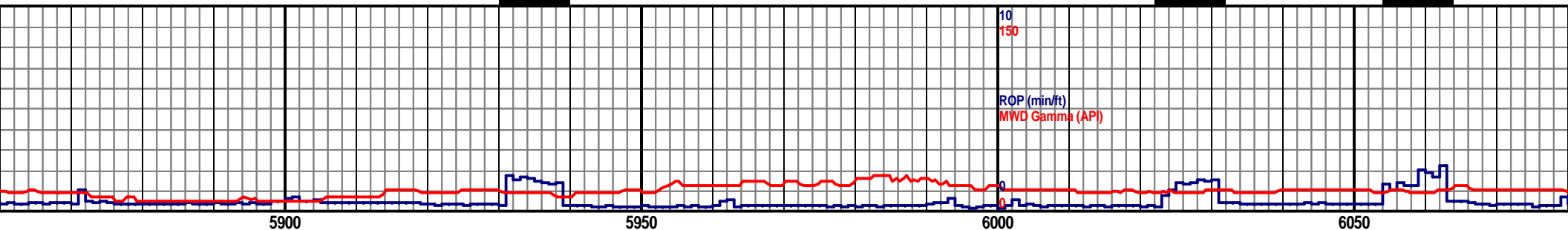
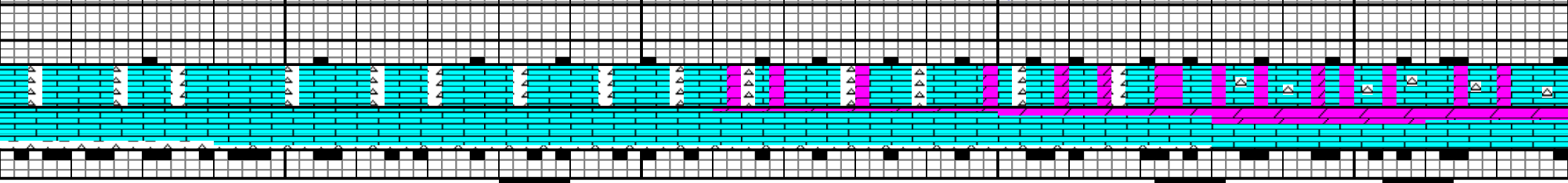
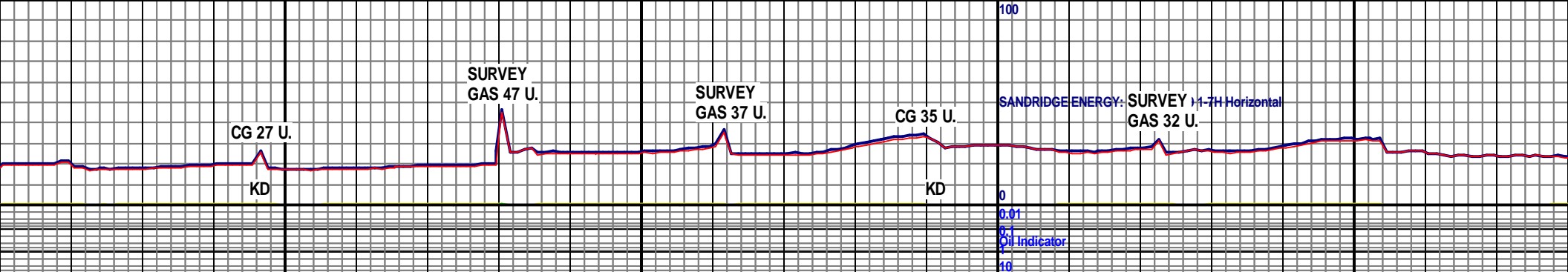


DRILLING W/ BIT #4, 6.125", HALLIBURTON, FX54D, SS# 11903503, JETS 5X12, IN @ 5,795'

4/14 SLIP DIE FELL INTO HOLE. P/U MAGNET/FISHING TOOLS. RECOVERY

MOTOR BEND: 1.5

11/2/2012

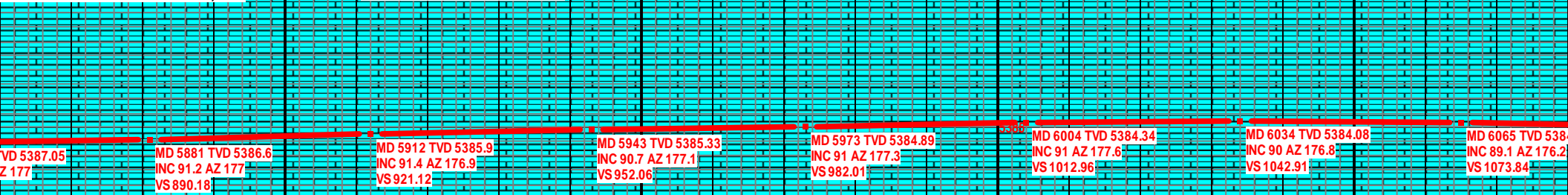


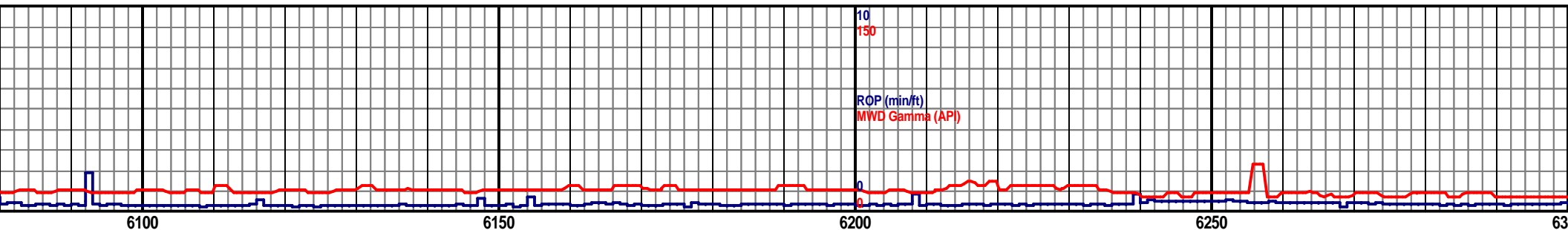
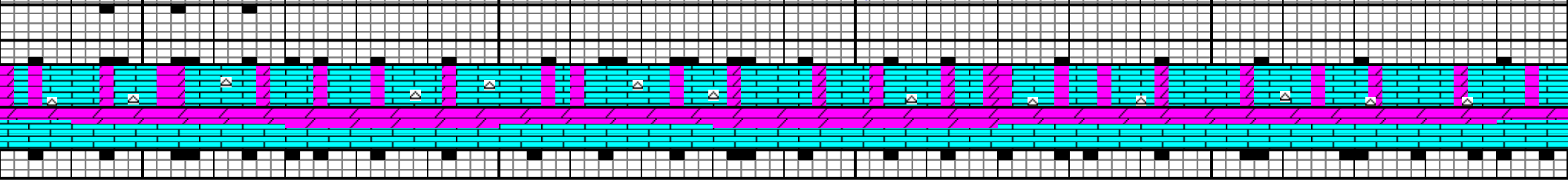
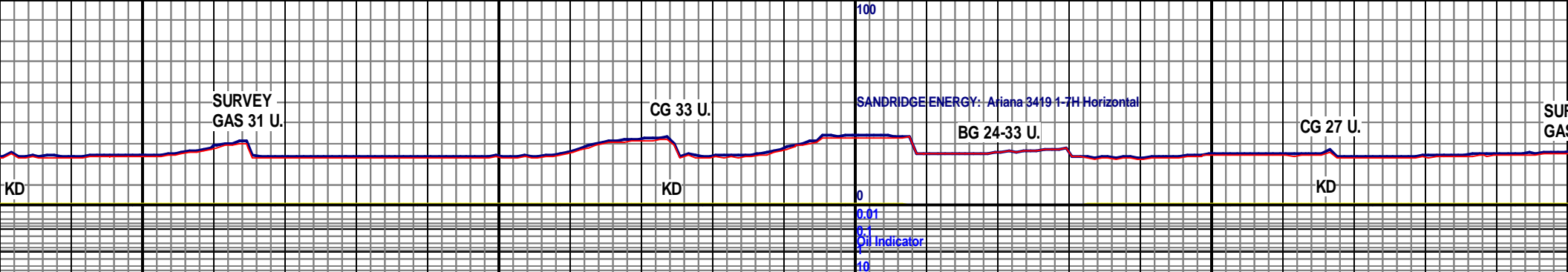
T, OCC LT GRY, FRM- MOD FRM,
 XLN, OCC FN XLN, OCC PR FRAC
 T, SME WHT- OPQ, ANG, SHRP,
 O OIDS, DOLO LS: WHT- CRM,
 M, SUBANG, OCC SUBRND, BLKY,
 MLKY- V LT BLU CUT- NO CUT, NO

LS: PRED WHT-OFF WHT, OCC CRM, SME LT TN, PRED MOD FRM, SME
 FRM, SUBANG, SME SUBRND, BLKY, V FN-MIC FN XLN, CHT:
 OPQ-TRANSLU, SME WHT, PRED ANG, TR SUBANG, BLKY-CHNKY, OCC W/
 V PRLY FRMD CHRTIFIED OIDS, DOLO LS: WHT-OFF WHT, SME CRM,
 OCC LT GY, MOD FRM, SME FRM, SUBANG, BLKY, SLI TR V PR DUL YEL
 FLOR, NO CUT, NO RES RING

WOB: 5.7
 RPM: 52
 PP: 1472
 SPM: 72

LS: PRED WHT, SME OFF WHT, SME CRM, SME LT TN, MOD FRM-FRM,
 SUBANG, OCC SUBRND, BLKY, DOLO LS: WHT-OFF WHT, SME CRM, O
 GY, MOD FRM, OCC FRM, SUBANG, BLKY, SME CHNKY, CHT: TR, WHT-
 SME TRANSLU, HRD, SME FRM, ANG, SLI TR V PR DUL YEL FLOR, V P
 SLO FNT MLKY-V LT BLU CUT, NO RES RING





4.33

MD 6095 TVD 5384.9
INC 88.7 AZ 175.8
VS 1103.75

MD 6126 TVD 5385.69
INC 88.4 AZ 175.7
VS 1134.63

MD 6156 TVD 5386.34
INC 89.1 AZ 175.7
VS 1164.53

MD 6187 TVD 5386.56
INC 90.1 AZ 175.6
VS 1195.42

MD 6217 TVD 5386.43
INC 90.4 AZ 175.7
VS 1225.31

MD 6248 TVD 5386.13
INC 90.7 AZ 175.6
VS 1256.21

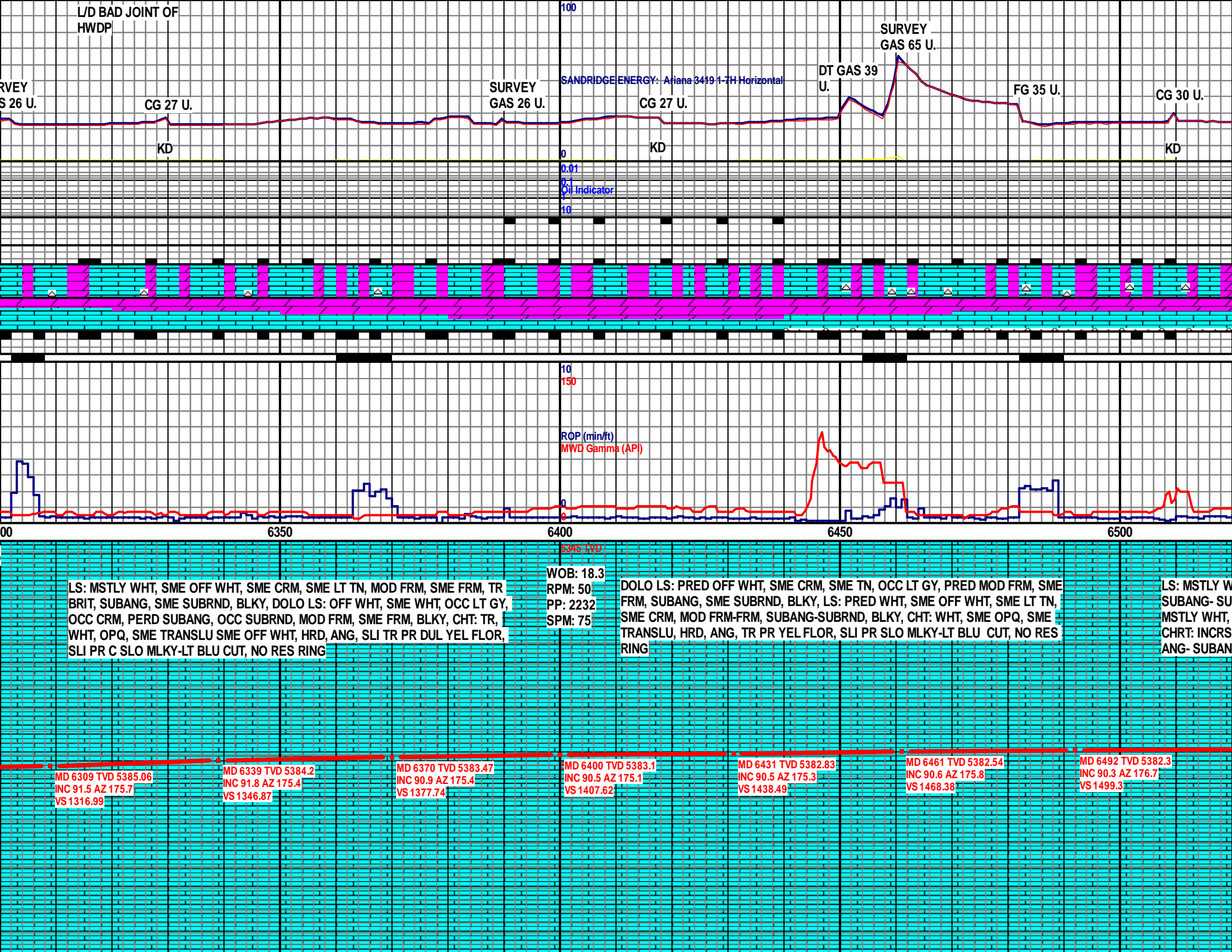
MD 6278 TVD 5385.71
INC 90.9 AZ 175.7
VS 1286.1

LS: MSTLY WHT, SME OFF WHT, SME LT TN, SME CRM, PRED MOD FRM, OCC FRM, TR BRIT, PRED SUBANG, OCC SUBRND, BLKY, DOLO LS: WHT-OFF WHT, SME CRM, SME TN, SME LT GY, MOD FRM-FRM, SUBANG, BLKY, OCC CHNKY, CHT: TR, WHT, OPQ, TRANSLU, HRD, ANG, SLI TR V PR DUL YEL FLOR, NO CUT, NO RES RING

LS: PRED WHT, SME OFF WHT, SME CRM, OCC LT TN, MOD FRM-FRM, SUBANG-SUBRND, SME BLKY, SME CHNKY, DOLO LS: PRED OFF WHT, SME WHT, SME LT GY, SUBANG, OCC SUBRND, PRED MOD FRM, OCC FRM, BLKY, CHT: TR WHT, OPQ, SME TRANSLU, SME OFF WHT, HRD, ANG, SLI TR V PR DUL YEL FLOR, NO CUT, NO RES RING

WOB: 17.5
RPM: 53
PP: 2176
SPM: 75

4/16/2013



L/D BAD JOINT OF HWDP

SURVEY GAS 26 U.

CG 27 U.

KD

SURVEY GAS 26 U.

CG 27 U.

KD

SANDRIDGE ENERGY - Ariana 3419 1-7H Horizontal

DT GAS 39 U.

SURVEY GAS 65 U.

FG 35 U.

CG 30 U.

KD

Oil Indicator
0
0.01
0.1
10

ROP (min/ft)
MWD Gamma (API)
10
150

00

6350

6400

6450

6500

5385 TVD

LS: MSTLY WHT, SME OFF WHT, SME CRM, SME LT TN, MOD FRM, SME FRM, TR BRIT, SUBANG, SME SUBRND, BLKY, DOLO LS: OFF WHT, SME WHT, OCC LT GY, OCC CRM, PERD SUBANG, OCC SUBRND, MOD FRM, SME FRM, BLKY, CHT: TR, WHT, OPQ, SME TRANSLU SME OFF WHT, HRD, ANG, SLI TR PR DUL YEL FLOR, SLI PR C SLO MLKY-LT BLU CUT, NO RES RING

WOB: 18.3
RPM: 50
PP: 2232
SPM: 75

DOLO LS: PRED OFF WHT, SME CRM, SME TN, OCC LT GY, PRED MOD FRM, SME FRM, SUBANG, SME SUBRND, BLKY, LS: PRED WHT, SME OFF WHT, SME LT TN, SME CRM, MOD FRM-FRM, SUBANG-SUBRND, BLKY, CHT: WHT, SME OPQ, SME TRANSLU, HRD, ANG, TR PR YEL FLOR, SLI PR SLO MLKY-LT BLU CUT, NO RES RING

LS: MSTLY WHT, SUBANG-SUBRND, MSTLY WHT, CHT: INCRS ANG-SUBAN

MD 6309 TVD 5385.06
INC 91.5 AZ 175.7
VS 1316.99

MD 6339 TVD 5384.2
INC 91.8 AZ 175.4
VS 1346.87

MD 6370 TVD 5383.47
INC 90.9 AZ 175.4
VS 1377.74

MD 6400 TVD 5383.1
INC 90.5 AZ 175.1
VS 1407.62

MD 6431 TVD 5382.83
INC 90.5 AZ 175.3
VS 1438.49

MD 6461 TVD 5382.54
INC 90.6 AZ 175.8
VS 1468.38

MD 6492 TVD 5382.3
INC 90.3 AZ 176.7
VS 1499.3

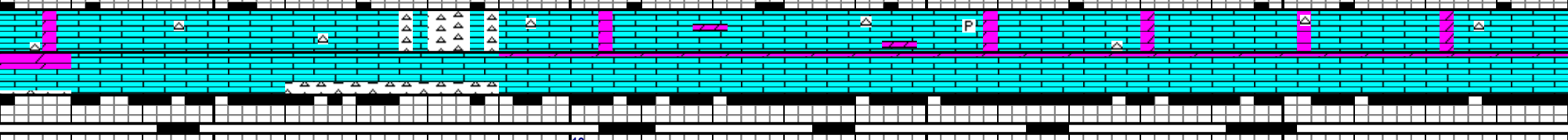
SANDRIDGE ENERGY: Ariana 3419 1-7H Horizontal

SURVEY GAS 35 U.

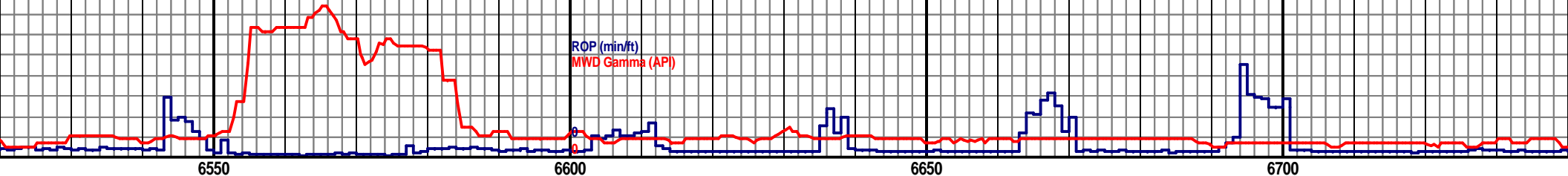
KD

KD

0.01
Oil Indicator
10



10
150
ROP (min/ft)
MWD Gamma (API)



6550

6600

6650

6700

5345 TVD

WHT, SME DRTY WHT- LT GRY, SME CRM, FRM- MOD FRM, OCC BRIT,
BRND, OCC ANG, BLKY, MIC FN- OCC V FN XLN, DOLO LS: DCRSNG,
SME LT GRY- OFF WHT, FRM- MOD FRM, MSTLY SUBRND, OCC SUBANG,
E, CLR- SLI OPQ, SME GRY, OCC FRSTD, OCC MOTT OPQ/GRY/SLI BLK,
G, SLI TR GLD- YEL FLOR,

WOB: 20.5
RPM: 52
PP: 2344
SPM: 73

LS: CRM- LT GRY, SME DRTY WHT, SME WHT, MOD FRM, OCC SLI FRM, TR FRM,
OCC FRI, SUBANG- SUBRND, BLKY, MIC FN- V FN XLN, TR FN XLN, DOLO LS: TR,
WHT, SME LT GRY, OCC CRM- OFF WHT, FRM- MOD FRM, OCC SLI FRM,
SUBRND, OCC SUBANG, CHRT: V SLI TR, CLR, SME FRSTD- OPQ, OCC LT GRY,
ANG- SUBANG, SLI TR PR FNT LT YEL FLOR,

LS: MSTLY CRM- WHT, SME LT GRY,
FRI, PRED SUBANG, SME SUBRND,
FN XLN, TR PR FRAC POR, DOLO L
MOD FRM, OCC SLI FRM, OCC BRIT
TNRSL, OCC CLR- OPQ, TR FRSTD,
FLOR, NO VIS CUT, NO RESD RING

MD 6522 TVD 5382.17
INC 90.2 AZ 176.6
VS 1529.23

MD 6553 TVD 5382.09
INC 90.1 AZ 177
VS 1560.17

MD 6584 TVD 5382.14
INC 89.7 AZ 176.4
VS 1591.11

MD 6614 TVD 5382.32
INC 89.6 AZ 177
VS 1621.04

MD 6645 TVD 5382.43
INC 90 AZ 178
VS 1652

MD 6675 TVD 5382.3
INC 90.5 AZ 178.4
VS 1681.98

MD 6706 TVD 5382.08
INC 90.3 AZ 178.8
VS 1712.97

MD
INC
VS 1

MUD CK ©
MW: 8.70
FV: 31
PV: 1
YP: 3
GEL: 1/1/

SURVEY
GAS 29 U.

BG GAS
23-36 U.

SANDRIDGE ENERGY: Ariana 3419 1-7H Horizontal

CG 29 U.

SURVEY
GAS 28 U.

KD

KD

0
0.01
0.1
Oil Indicator
10

10
150
ROP (min/ft)
MWD Gamma (API)

6750

6800

6850

6900

6950

5345 TVD

WHT, OFF WHT, SLI FRM- MOD FRM, OCC FRM, OCC- TR
TR ANG, BLKY, OCC PLTY, MIC FN- V FN XLN, TR
S: TR, WHT, OFF WHT, LT GRY, OCC CRM, FRM-
SUBRND, OCC SUBANG, CHRT: V SLI TR, MSTLY
ANG- SUBANG, SHRP, V SLI TR PR FNT LT YEL

WOB: 23.5
RPM: 54
PP: 2484
SPM: 73

LS: PRED CRM, SME OFF WHT- WHT, SME LT GRY, SLI TR LT TAN, MOD FRM- FRM,
OCC SLI FRM, OCC BRIT, SUBANG- SUBRND, BLKY, OCC PLTY, MIC FN- V FN XLN,
OCC FN XLN, TR SS STRNGRS, TR PR FRAC POR, DOLO LS: TR, CRM- OFF WHT,
SME WHT, OCC LT GRY, FRM- MOD FRM, SME SLI FRM, OCC BRIT/CRMBLY,
SUBRND- SUBANG, CHRT: V SLI TR, TNRSL, OCC CLR- OPQ, ANG, TR SUBANG,
SPLNTY, SHRP, V SLI TR V PR DLL YEL- LT YEL FLOR, V PR V SLO V FNT MLKY
CUT- NO CUT, NO VIS RESD RING

LS: PRED DRTY WHT- CRM, SME LT GRY, SME WHT
FRM, OCC FRM, OCC BRIT, SUBANG- SUBRND, TR A
FN- V FN XLN, OCC FN XLN, OCC SS STRNGRS, TR
WHT- OFF WHT, SME DRTY WHT- LT GRY, OCC CRM
FRM, OCC BRIT, SUBANG- SUBRND, CHRT: V SLI TR
OCC MOTT W/ GRY- DRK GRY, ANG- SUBANG, SHRP
FLOR,

MD 6736 TVD 5381.95
INC 90.2 AZ 178.8
VS 1742.95

MD 6767 TVD 5381.95
INC 89.8 AZ 179.3
VS 1773.94

MD 6798 TVD 5382.06
INC 89.8 AZ 179.4
VS 1804.94

MD 6828 TVD 5382.11
INC 90 AZ 179.3
VS 1834.93

MD 6859 TVD 5382.03
INC 90.3 AZ 179.4
VS 1865.93

MD 6889 TVD 5381.77
INC 90.7 AZ 179
VS 1895.92

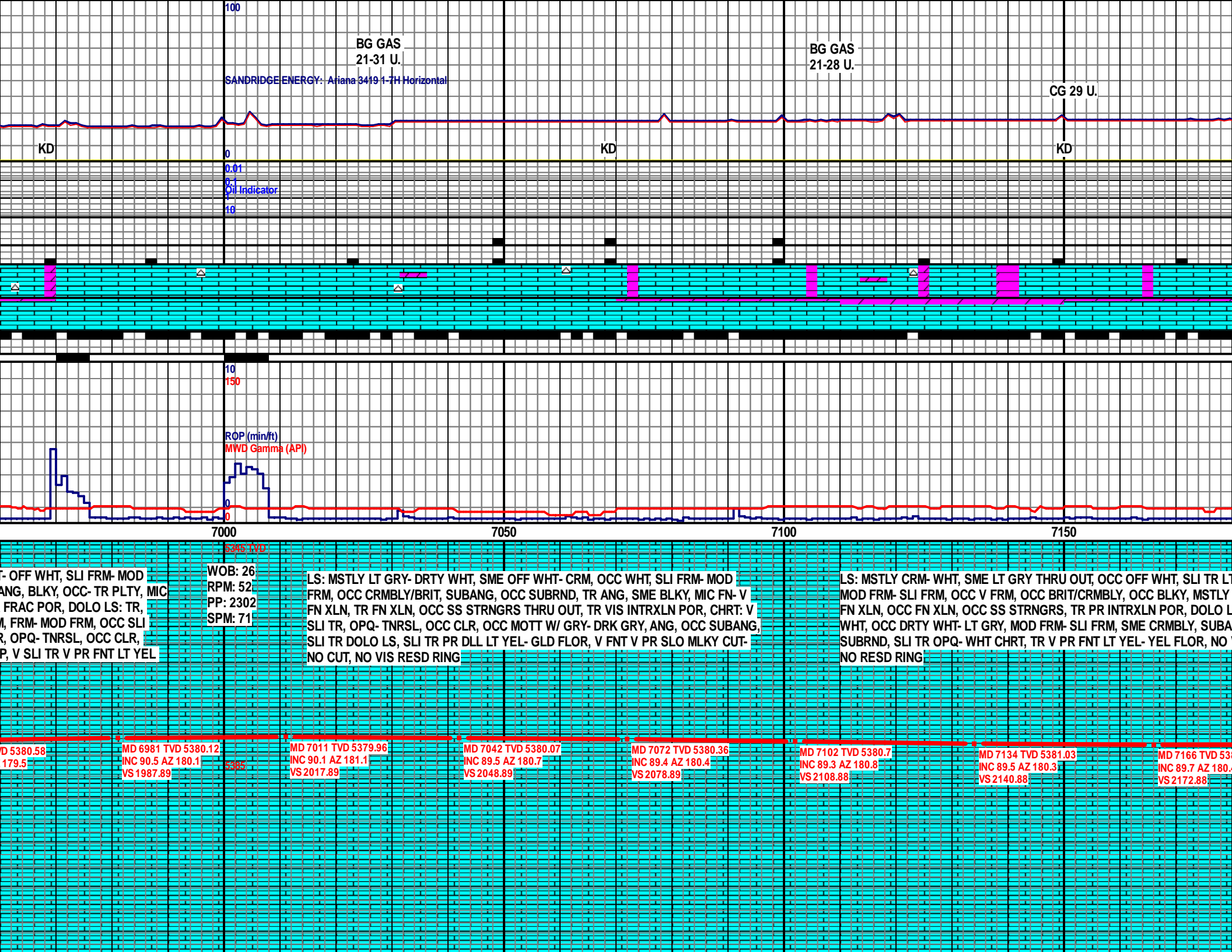
MD 6920 TVD 5381.23
INC 91.3 AZ 179.1
VS 1926.91

MD 6950 TVD 5381.23
INC 91.2 AZ 179.1
VS 1956.91

MUD CK @: 6,756

SOL: 1.4
OIL/WAT: 0.0/97.5
PH: 12.0
MA: 3.25
FA: 2.00/3.0

MUD CK @: 6,756
MW: 8.70
FV: 31
PV: 1
YP: 3
GEL: 1/1/0



BG GAS
21-31 U.

BG GAS
21-28 U.

CG 29 U.

SANDRIDGE ENERGY: Ariana 3419 H-7H Horizontal

KD

KD

KD

0
0.01
0.1
Oil Indicator
10

10
150
ROP (min/ft)
MWD Gamma (API)

7000

7050

7100

7150

5395 TVD

LS: OFF WHT, SLI FRM- MOD
ANG, BLKY, OCC- TR PLTY, MIC
FRAC POR, DOLO LS: TR,
M, FRM- MOD FRM, OCC SLI
R, OPQ- TNRSL, OCC CLR,
P, V SLI TR V PR FNT LT YEL

WOB: 26
RPM: 52
PP: 2302
SPM: 71

LS: MSTLY LT GRY- DRTY WHT, SME OFF WHT- CRM, OCC WHT, SLI FRM- MOD
FRM, OCC CRMBLY/BRIT, SUBANG, OCC SUBRND, TR ANG, SME BLKY, MIC FN- V
FN XLN, TR FN XLN, OCC SS STRNGRS THRU OUT, TR VIS INTRXLN POR, CHRT: V
SLI TR, OPQ- TNRSL, OCC CLR, OCC MOTT W/ GRY- DRK GRY, ANG, OCC SUBANG,
SLI TR DOLO LS, SLI TR PR DLL LT YEL- GLD FLOR, V FNT V PR SLO MLKY CUT-
NO CUT, NO VIS RESD RING

LS: MSTLY CRM- WHT, SME LT GRY THRU OUT, OCC OFF WHT, SLI TR LT
MOD FRM- SLI FRM, OCC V FRM, OCC BRIT/CRMBLY, OCC BLKY, MSTLY
FN XLN, OCC FN XLN, OCC SS STRNGRS, TR PR INTRXLN POR, DOLO L
WHT, OCC DRTY WHT- LT GRY, MOD FRM- SLI FRM, SME CRMBLY, SUBA
SUBRND, SLI TR OPQ- WHT CHRT, TR V PR FNT LT YEL- YEL FLOR, NO
NO RESD RING

MD 5380.58
INC 179.5

MD 6981 TVD 5380.12
INC 90.5 AZ 180.1
VS 1987.89

MD 7011 TVD 5379.96
INC 90.1 AZ 181.1
VS 2017.89

MD 7042 TVD 5380.07
INC 89.5 AZ 180.7
VS 2048.89

MD 7072 TVD 5380.36
INC 89.4 AZ 180.4
VS 2078.89

MD 7102 TVD 5380.7
INC 89.3 AZ 180.8
VS 2108.88

MD 7134 TVD 5381.03
INC 89.5 AZ 180.3
VS 2140.88

MD 7166 TVD 5381.36
INC 89.7 AZ 180.0
VS 2172.88

SANDRIDGE ENERGY: Ariana 3419 1-7H Horizontal

BG GAS 25-22 U.

BG GAS 25-28 U.

BG GAS 24-30 U.

BG GAS 24-25 U.

0
0.01
0.1
Oil Indicator
10

KD

KD

10
150
ROP (min/ft)
MWD Gamma (API)

7200

7250

7300

7350

7400

5345 TVD

T TAN,
MIC FN-V
S: MSTLY
NG-
VIS CUT,

WOB: 25.5
RPM: 52
PP: 2461
SPM: 73

LS: PRED WHT-CRM, SME OFF WHT, SME LT TN, SME LT GY, MOD FRM-FRM, SME SLI
FRM, TR BRIT, BLKY, OCC SS STRNGRS, SUBANG-SUBRND, DOLO LS: PRED WHT,
SME OFF WHT, SME CRM, SUBANG, OCC SUBRND, MOD FRM, SME FRM, CHT:
WHT-OPQ, SME TRANSLU, HRD, ANG, TR FNT PR YEL FLOR, NO CUT, NO RES RING

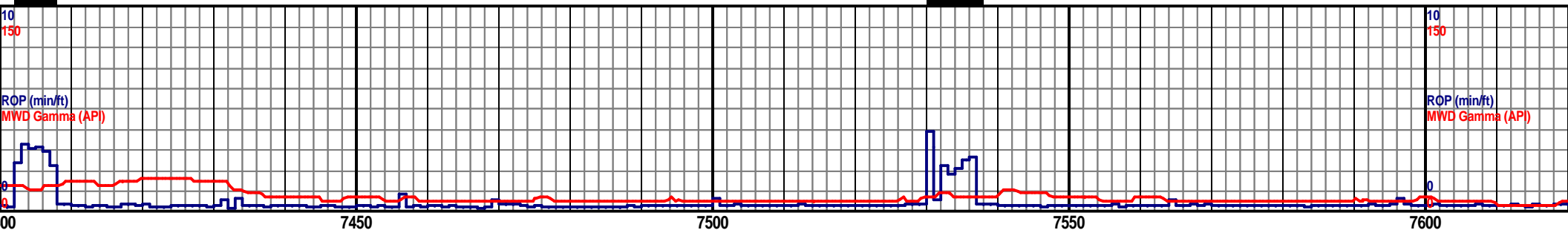
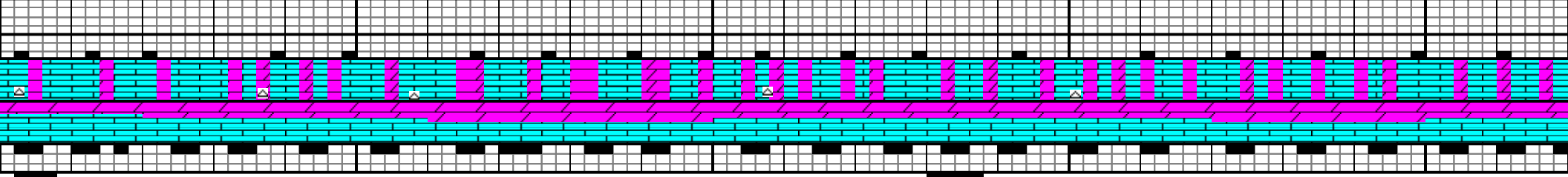
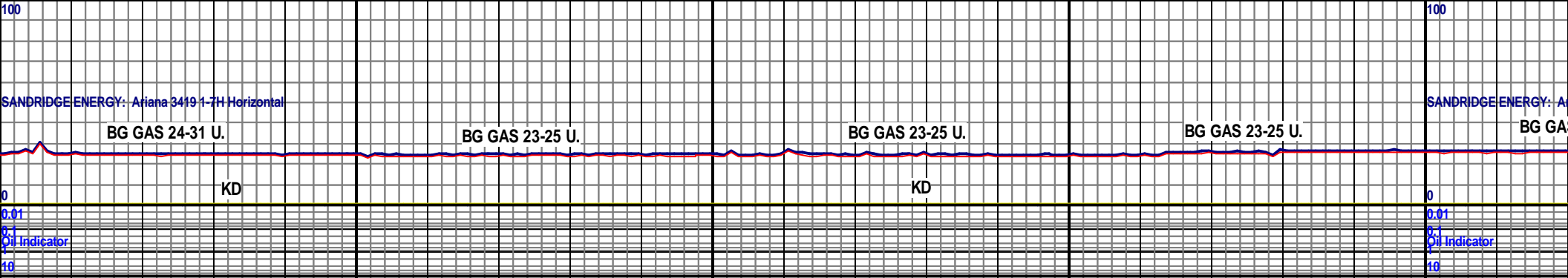
LS: PRED WHT, SME CRM, SME OFF WHT, SME LT GY, MOD FRM, SME FRM, OCC
BRIT, SME SLI FRM, SUBANG, OCC SUBRND, OCC SS STRNGRS, DOLO LS: PRED
WHT-OFF WHT, SME LT GY, OCC CRM, PRED SUBANG, SME SUBRND, MOD FRM,
OCC FRM, TR SLI FRM, CHT: TR, WHT-OPQ, SME TRANSLU, HRD, ANG, TR PR FNT
YEL FLOR, NO CUT, NO RES RING

81.25
4

MD 7197 TVD 5381.34
INC 90 AZ 180.1
VS 2203.88

MD 7292 TVD 5380.76
INC 90.7 AZ 179.7
VS 2298.87

MD 7387 TVD 5380.76
INC 91.5 AZ 179.7
VS 2393.85



5345 TVD

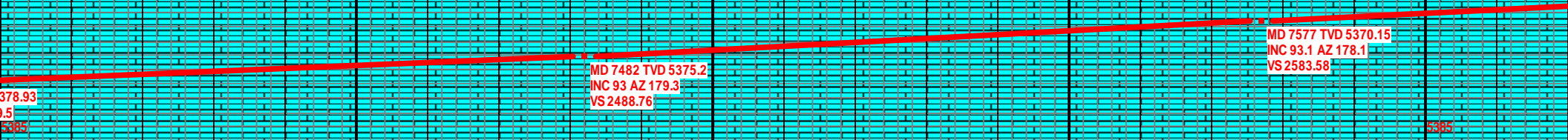
WOB: 30.2 LS: PRED WHT, SME OFF WHT, SME LT GY, SME CRM, MOD FRM-FRM, OCC SLI FRM, OCC BRITT, SUBANG-SUBRND, OCC SS STRNGRS, DOLO LS: PRED OFF WHT, SME WHT, SME CRM, SME GY-LT GY, MSTLY SUBANG, TR SUBRND, MOD FRM, SME FRM, TR PR FNT YEL FLOR, NO CUT, NO RES RING

WOB: 24.6 LS: P

RPM: 52 FRM,

PP: 2539 OFF V

SPM: 73 FRM,



BG GAS 23-25 U.

BG GAS 23-24 U.

BG GAS 23-26 U.

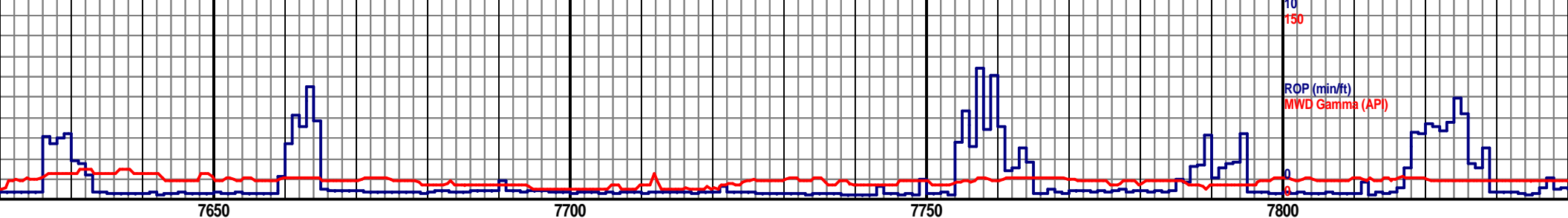
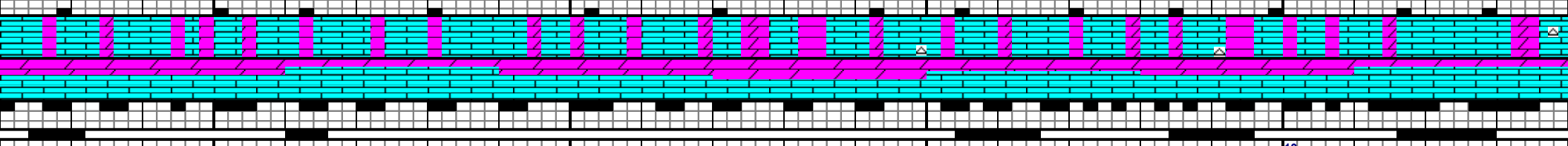
KD

KD

KD

0
0.01
0.1
1
10

Oil Indicator



7650

7700

7750

7800

10
150

ROP (min/ft)

MWD Gamma (API)

4/17/2013

5345 TVD

RED WHT, SME OFF WHT, SME CRM, SME TN, MOD FRM-FRM, OCC SLI
 OCC BRITT, SUBANG-SUBRND, OCC SS STRNGRS, DOLO LS: MSTLY
 WHT, SME WHT, SME LT GY, OCC LT TN, SUBANG, OCC SUBRND, MOD
 SME FRM, OCC SLI FRM, TR PR FNT YEL FLOR, NO CUT, NO RES RING

MD 7672 TVD 5365.42
 INC 92.6 AZ 178
 VS 2678.38

MD 7767 TVD 5360.87
 INC 92.9 AZ 178.2
 VS 2773.19

LS: MSTLY WHT, SME OFF WHT, SME CRM, SME LT TN, MOD FRM, SME
 FRM, TR SLI FRM, OCC BRIT, SUBANG, OCC SUBRND, OCC SS
 STRNGRS, DOLO LS: PRED OFF WHT, SME WHT, OCC LT GY, SME TN,
 SUBANG, SME SUBRND, MOD FRM-FRM, TR SLI FRM, TR V PR FNT YEL
 FLOR, NO CUT, NO RES RING

5300

LS: LT GRY- DRTY WHT, SME
 FRM, OCC CRMBLY, SUBANG
 PR FRAC POR, DOLO LS: PR
 FRM, SUBRND- SUBANG, BLI
 OPQ- TNRS, OCC CLR, OCC
 FLOR, TR BLU FLOR, NO VIS

WOB: 29.6
 RPM: 50
 PP: 2306

SURVEY
GAS 40 U.

SURVEY
GAS 30 U.

CG 35 U.

FG 38 U.

CG 49 U.

SANDRIDGE ENERGY: Ariana 3419 1-7H Horizontal

KD

KD

0.01
Oil Indicator
10

7850

7900

7950

8000

8050

ROP (min/ft)
MWD Gamma (API)

10
150

MD 7862 TVD 5357.47
INC 91.2 AZ 179.3
VS 2868.09

MD 7957 TVD 5355.73
INC 90.9 AZ 180.8
VS 2963.07

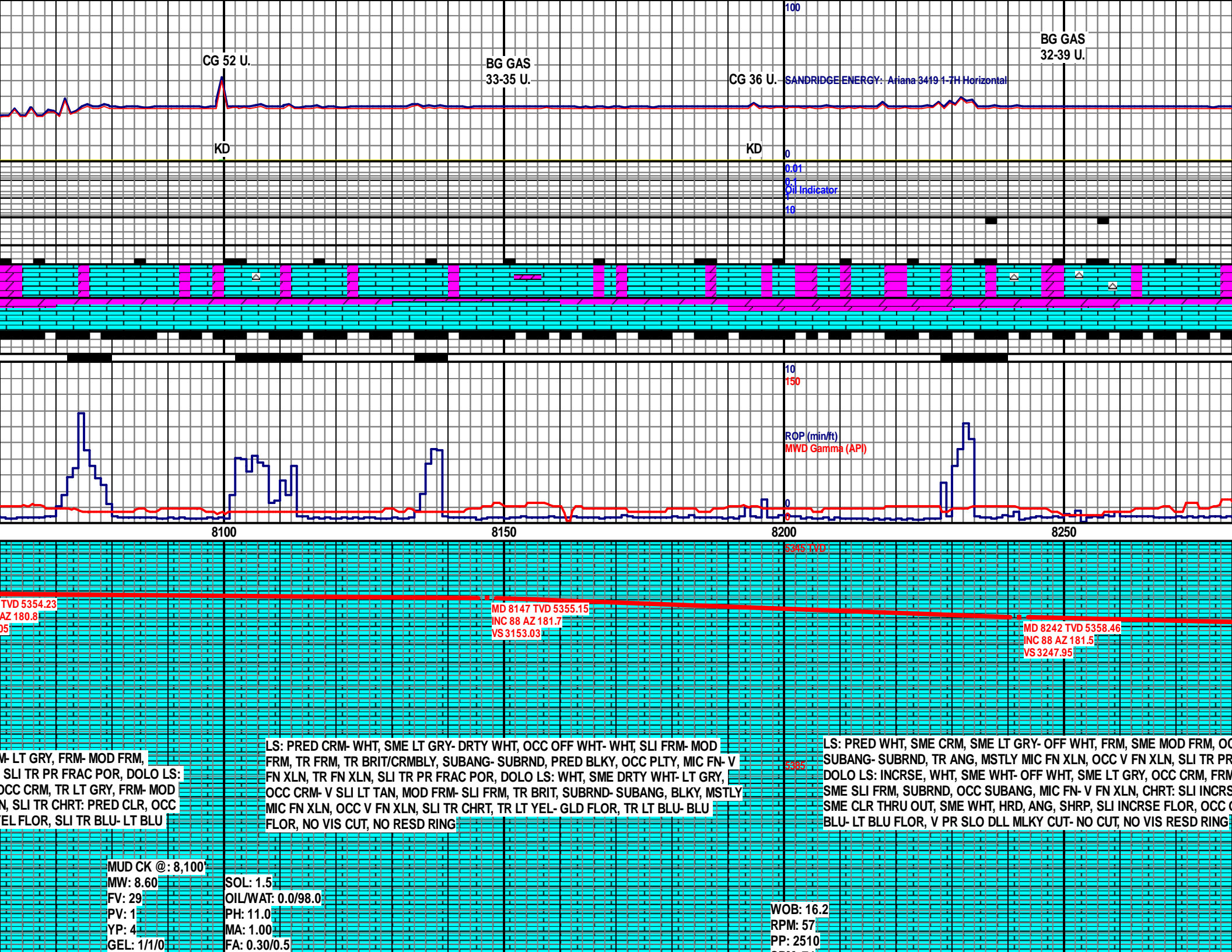
MD 8052
INC 90.9
VS 3058.0

CRM, OCC OFF WHT- WHT, SLI FRM- MOD FRM, TR
- SUBRND, SME- OCC BLKY, MIC FN- V FN XLN, SLI TR
ED WHT, SME DRTY WHT- LT GRY, OCC CRM, MOD
KY, PRED MIC FN XLN, OCC V FN XLN, CHRT: V SLI TR,
MOTT GRY, ANG, OCC SUBANG, TR LT YEL- GLD
CUT, NO RESD RING

LS: PRED CRM- LT GRY, SME OFF WHT- DRTY WHT, OCC WHT, SLI FRM- MOD FRM,
OCC FRM, TR BRIT/CRMBLY, SUBANG- SUBRND, OCC BLKY, MIC FN- V FN XLN, TR FN
XLN, SLI TR PR FRAC POR, DOLO LS: WHT, SME CRM- DRTY WHT, SME LT GRY, MOD
FRM- SLI FRM, OCC BRIT, SUBRND- OCC SUBANG, BLKY, MSTLY MIC FN XLN, OCC V
FN XLN, CHRT: V SLI TR, MSTLY TNRSL- SLI OPQ, OCC WHT, ANG- SUBANG, TR LT
YEL- YEL FLOR, SLI TR LT BLU- BLU FLOR, NO VIS CUT, NO RESD RING

LS: MSTLY DRTY WHT, SME OFF WHT, OCC CRM
SUBANG- SUBRND, TR ANG, MIC FN- V FN XLN,
SLI INCNSE, PRED WHT, SME WHT- OFF WHT, C
FRM, SUBRND- SUBANG, MIC FN- OCC V FN XLN
OPQ- FRSTD, V HRD, ANG, SME BRI, TR GLD- Y
FLOR, NO VIS CUT, NO RESD RING

WOB: 24.6
RPM: 55
PP: 2560



CG 52 U.

BG GAS
33-35 U.

CG 36 U. SANDRIDGE ENERGY - Ariana 3419 1-7H Horizontal

BG GAS
32-39 U.

KD

KD

0
0.01
0.1
Oil Indicator
10

8100

8150

8200

8250

ROP (min/ft)
MWD Gamma (API)

TVD 5354.23
AZ 180.8
35

MD 8147 TVD 5355.15
INC 88 AZ 181.7
VS 3153.03

MD 8242 TVD 5358.46
INC 88 AZ 181.5
VS 3247.95

LT GRY, FRM- MOD FRM,
SLI TR PR FRAC POR, DOLO LS:
OCC CRM, TR LT GRY, FRM- MOD
N, SLI TR CHRT: PRED CLR, OCC
EL FLOR, SLI TR BLU- LT BLU

LS: PRED CRM- WHT, SME LT GRY- DRTY WHT, OCC OFF WHT- WHT, SLI FRM- MOD
FRM, TR FRM, TR BRIT/CRMBLY, SUBANG- SUBRND, PRED BLKY, OCC PLTY, MIC FN- V
FN XLN, TR FN XLN, SLI TR PR FRAC POR, DOLO LS: WHT, SME DRTY WHT- LT GRY,
OCC CRM- V SLI LT TAN, MOD FRM- SLI FRM, TR BRIT, SUBRND- SUBANG, BLKY, MSTLY
MIC FN XLN, OCC V FN XLN, SLI TR CHRT, TR LT YEL- GLD FLOR, TR LT BLU- BLU
FLOR, NO VIS CUT, NO RESD RING

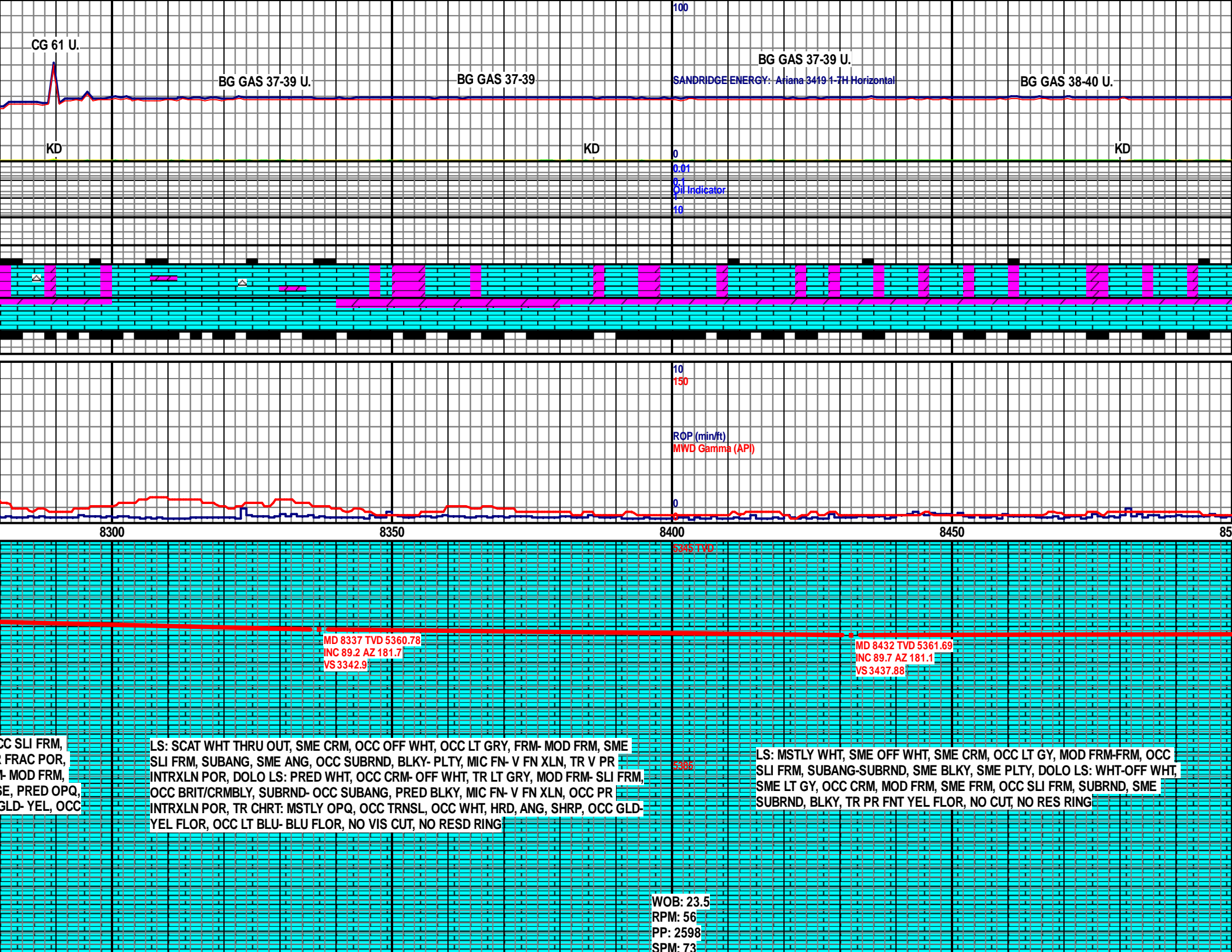
LS: PRED WHT, SME CRM, SME LT GRY- OFF WHT, FRM, SME MOD FRM, OC
SUBANG- SUBRND, TR ANG, MSTLY MIC FN XLN, OCC V FN XLN, SLI TR PR
DOLO LS: INCRSE, WHT, SME WHT- OFF WHT, SME LT GRY, OCC CRM, FRM
SME SLI FRM, SUBRND, OCC SUBANG, MIC FN- V FN XLN, CHRT: SLI INCRS
SME CLR THRU OUT, SME WHT, HRD, ANG, SHRP, SLI INCRSE FLOR, OCC C
BLU- LT BLU FLOR, V PR SLO DLL MLKY CUT- NO CUT, NO VIS RESD RING

MUD CK @: 8,100'

MW: 8.60
FV: 29
PV: 1
YP: 4
GEL: 1/1/0

SOL: 1.5
OIL/WAT: 0.0/98.0
PH: 11.0
MA: 1.00
FA: 0.30/0.5

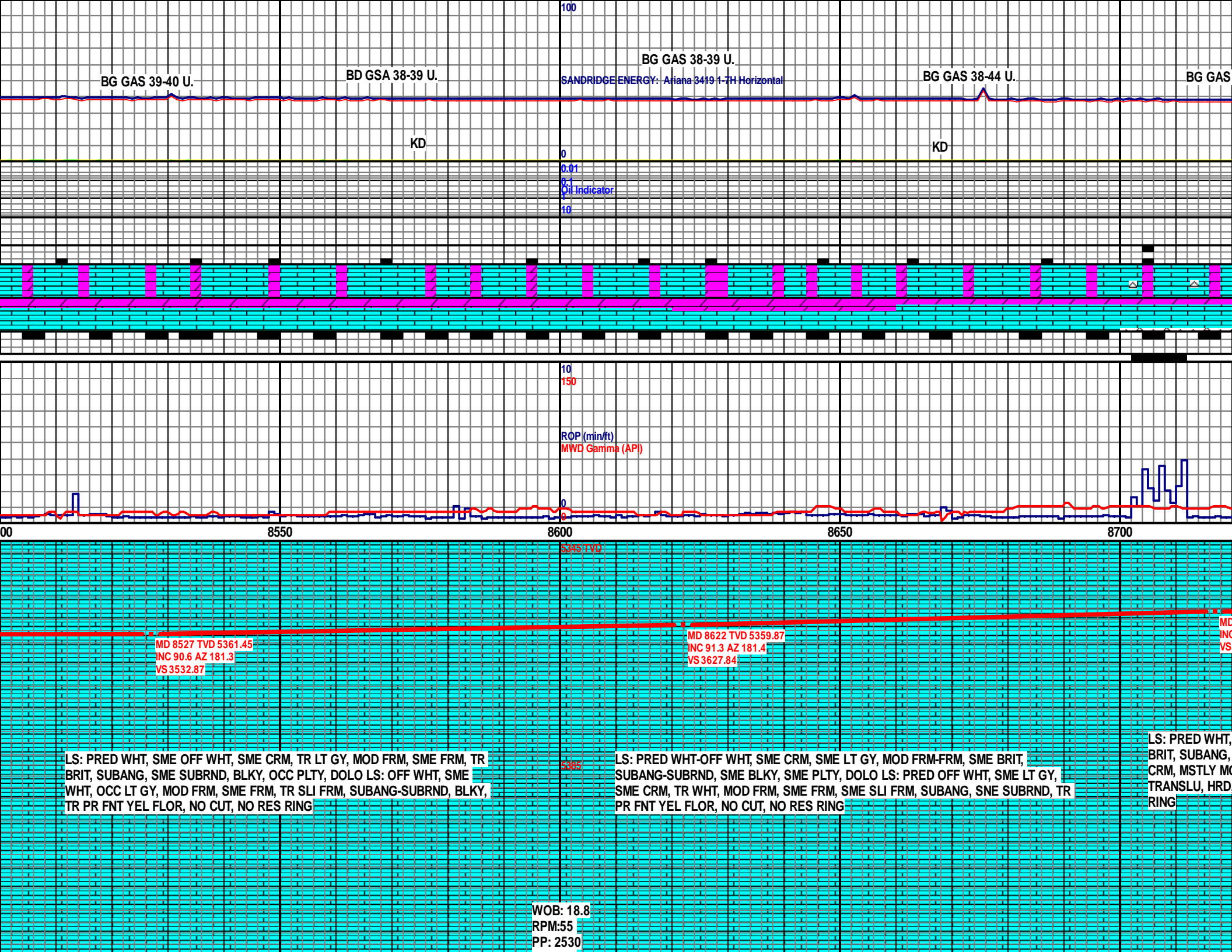
WOB: 16.2
RPM: 57
PP: 2510



OCC SLI FRM,
FRAC POR,
MOD FRM,
E, PRED OPQ,
GLD- YEL, OCC

LS: SCAT WHT THRU OUT, SME CRM, OCC OFF WHT, OCC LT GRY, FRM- MOD FRM, SME
SLI FRM, SUBANG, SME ANG, OCC SUBRND, BLKY- PLTY, MIC FN- V FN XLN, TR V PR
INTRXLN POR, DOLO LS: PRED WHT, OCC CRM- OFF WHT, TR LT GRY, MOD FRM- SLI FRM,
OCC BRIT/CRMBLY, SUBRND- OCC SUBANG, PRED BLKY, MIC FN- V FN XLN, OCC PR
INTRXLN POR, TR CHRT: MSTLY OPQ, OCC TRNSL, OCC WHT, HRD, ANG, SHRP, OCC GLD-
YEL FLOR, OCC LT BLU- BLU FLOR, NO VIS CUT, NO RESD RING

LS: MSTLY WHT, SME OFF WHT, SME CRM, OCC LT GY, MOD FRM-FRM, OCC
SLI FRM, SUBANG-SUBRND, SME BLKY, SME PLTY, DOLO LS: WHT-OFF WHT,
SME LT GY, OCC CRM, MOD FRM, SME FRM, OCC SLI FRM, SUBRND, SME
SUBRND, BLKY, TR PR FNT YEL FLOR, NO CUT, NO RES RING



BG GAS 39-40 U.

BD GSA 38-39 U.

BG GAS 38-39 U.

BG GAS 38-44 U.

BG GAS

SANDRIDGE ENERGY: Ariana 3419 H-7H Horizontal

KD

KD

100
0
0.01
Oil Indicator
10

10
150
ROP (min/ft)
MWD Gamma (API)

00

8550

8600

8650

8700

MD 8527 TVD 5361.45
INC 90.6 AZ 181.3
VS 3532.87

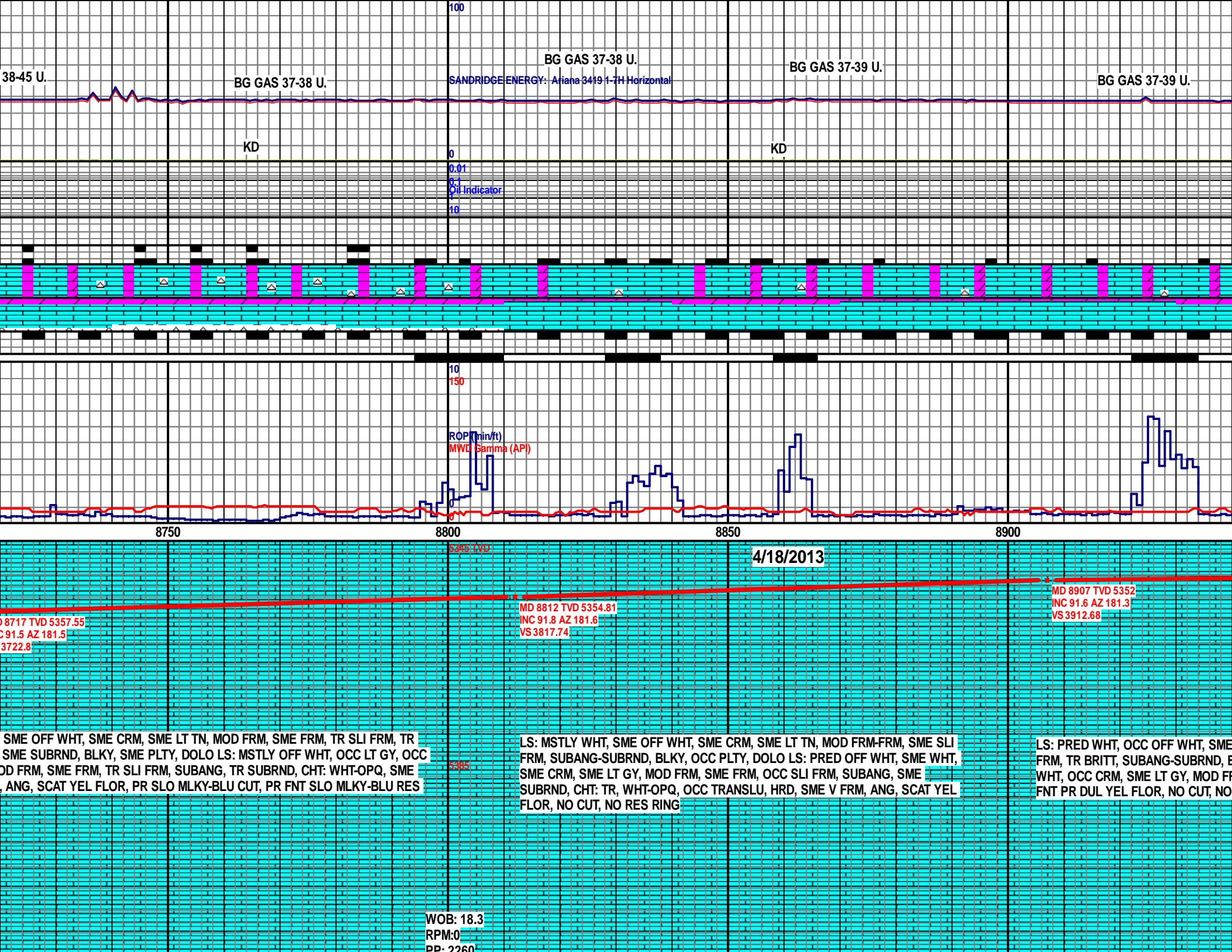
MD 8622 TVD 5359.87
INC 91.3 AZ 181.4
VS 3627.84

LS: PRED WHT, SME OFF WHT, SME CRM, TR LT GY, MOD FRM, SME FRM, TR BRIT, SUBANG, SME SUBRND, BLKY, OCC PLTY, DOLO LS: OFF WHT, SME WHT, OCC LT GY, MOD FRM, SME FRM, TR SLI FRM, SUBANG-SUBRND, BLKY, TR PR FNT YEL FLOR, NO CUT, NO RES RING

LS: PRED WHT-OFF WHT, SME CRM, SME LT GY, MOD FRM-FRM, SME BRIT, SUBANG-SUBRND, SME BLKY, SME PLTY, DOLO LS: PRED OFF WHT, SME LT GY, SME CRM, TR WHT, MOD FRM, SME FRM, SME SLI FRM, SUBANG, SNE SUBRND, TR PR FNT YEL FLOR, NO CUT, NO RES RING

LS: PRED WHT, BRIT, SUBANG, CRM, MSTLY M TRANSLU, HRD RING

WOB: 18.8
RPM: 55
PP: 2530



38-45 U.

BG GAS 37-38 U.

BG GAS 37-38 U.

SANDRIDGE ENERGY: Ariana 3419 1-7H Horizontal

BG GAS 37-39 U.

BG GAS 37-39 U.

KD

KD

0
0.01
0.1
Oil Indicator
10

ROP (min/ft)
MWD (Gamma (API))

8750

8800

8850

8900

4/18/2013

MD 8717 TVD 5357.55
INC 91.5 AZ 181.5
VS 3722.8

5345 TVD

MD 8812 TVD 5354.81
INC 91.8 AZ 181.6
VS 3817.74

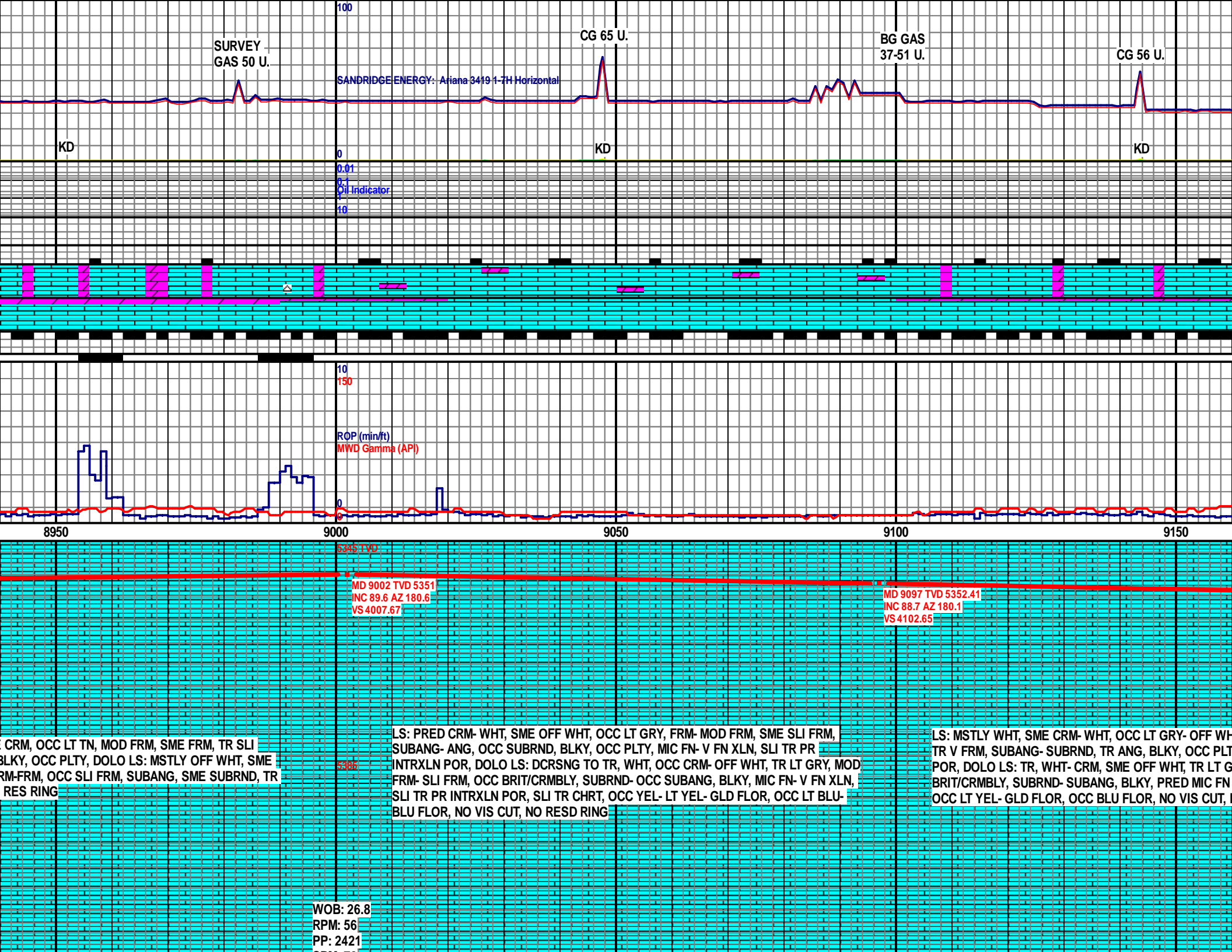
MD 8907 TVD 5352
INC 91.6 AZ 181.3
VS 3912.68

SME OFF WHT, SME CRM, SME LT TN, MOD FRM, SME FRM, TR SLI FRM, TR SME SUBRND, BLKY, SME PLTY, DOLO LS: MSTLY OFF WHT, OCC LT GY, OCC DD FRM, SME FRM, TR SLI FRM, SUBANG, TR SUBRND, CHT: WHT-OPQ, SME ANG, SCAT YEL FLOR, PR SLO MLKY-BLU CUT, PR FNT SLO MLKY-BLU RES

LS: MSTLY WHT, SME OFF WHT, SME CRM, SME LT TN, MOD FRM-FRM, SME SLI FRM, SUBANG-SUBRND, BLKY, OCC PLTY, DOLO LS: PRED OFF WHT, SME WHT, SME CRM, SME LT GY, MOD FRM, SME FRM, OCC SLI FRM, SUBANG, SME SUBRND, CHT: TR, WHT-OPQ, OCC TRANSLU, HRD, SME V FRM, ANG, SCAT YEL FLOR, NO CUT, NO RES RING

LS: PRED WHT, OCC OFF WHT, SME FRM, TR BRITT, SUBANG-SUBRND, E WHT, OCC CRM, SME LT GY, MOD FR FNT PR DUL YEL FLOR, NO CUT, NO

WOB: 18.3
RPM: 0
PP: 2260



SURVEY
GAS 50 U.

CG 65 U.

BG GAS
37-51 U.

CG 56 U.

SANDRIDGE ENERGY: Ariana 3419 1-7H Horizontal

KD

KD

KD

0
0.01
Oil Indicator
0.1
10

10
150
ROP (min/ft)
MWD Gamma (API)

8950

9000

9050

9100

9150

5345 TVD

MD 9002 TVD 5351
INC 89.6 AZ 180.6
VS 4007.67

MD 9097 TVD 5352.41
INC 88.7 AZ 180.1
VS 4102.65

CRM, OCC LT TN, MOD FRM, SME FRM, TR SLI
BLKY, OCC PLTY, DOLO LS: MSTLY OFF WHT, SME
FRM-FRM, OCC SLI FRM, SUBANG, SME SUBRND, TR
RES RING

LS: PRED CRM- WHT, SME OFF WHT, OCC LT GRY, FRM- MOD FRM, SME SLI FRM,
SUBANG- ANG, OCC SUBRND, BLKY, OCC PLTY, MIC FN- V FN XLN, SLI TR PR
INTRXLN POR, DOLO LS: DCRSNG TO TR, WHT, OCC CRM- OFF WHT, TR LT GRY, MOD
FRM- SLI FRM, OCC BRIT/CRMBLY, SUBRND- OCC SUBANG, BLKY, MIC FN- V FN XLN,
SLI TR PR INTRXLN POR, SLI TR CHRT, OCC YEL- LT YEL- GLD FLOR, OCC LT BLU-
BLU FLOR, NO VIS CUT, NO RESD RING

LS: MSTLY WHT, SME CRM- WHT, OCC LT GRY- OFF WHT,
TR V FRM, SUBANG- SUBRND, TR ANG, BLKY, OCC PLTY
POR, DOLO LS: TR, WHT- CRM, SME OFF WHT, TR LT GRY,
BRIT/CRMBLY, SUBRND- SUBANG, BLKY, PRED MIC FN
OCC LT YEL- GLD FLOR, OCC BLU FLOR, NO VIS CUT,

WOB: 26.8
RPM: 56
PP: 2421

BG GAS 31-41 U.

BG GAS 31-34 U.

CG 55 U.

SANDRIDGE ENERGY: Ariana 3419 1-7H Horizontal

KD

KD

0.01
0.1
Oil Indicator
10

10
150
ROP (min/ft)
MWD Gamma (API)

9200

9250

9300

9350

5345 TVD

MD 9192 TVD 5354.4
INC 88.9 AZ 179.7
VS 4197.63

MD 9287 TVD 5356.22
INC 88.9 AZ 179.4
VS 4292.6

IT, MOD FRM- FRM, SME SLI FRM,
Y, MIC FN- V FN XLN, TR FRAC
RY, MOD FRM- SLI FRM, OCC
XLN, OCC V FN XLN, SLI TR CHRT,
NO RESD RING

LS: PRED WHT, SME CRM, OCC OFF WHT, OCC LT GRY, MOD FRM- FRM, SME SLI FRM,
SUBANG, SME SUBRND, TR RND- ANG, BLKY, SME- OCC PLTY, MSTLY MIC FN XLN,
OCC V FN XLN, SLI TR PR FRAC POR, DOLO LS: TR, WHT, SME WHT- CRM, SME OFF
WHT, TR LT GRY, MOD FRM- SLI FRM, OCC BRIT/CRMBLY, MSTLY SUBRND, OCC
SUBANG, BLKY, MIC FN XLN, OCC- TR V FN XLN, CHRT: SLI INCRSE, OPQ- SLI TRNSL,
OCC CLR, OCC- TR WHT- OFF WHT, HRD- V HRD, ANG- SUBANG, SHRP, OCC LT YEL-
GLD FLOR, OCC BLU FLOR, NO VIS CUT, NO RESD RING

LS: MSTLY WHT- CRM, SME LT GRY- OFF WHT, SLI TR V LT TAN, FRM, SME MC
SLI FRM, SUBANG- SUBRND, MIC FN XLN, OCC V FN XLN, TR PR VUG POR, D
INCRSE, WHT, SME WHT- OFF WHT, SME LT GRY- CRM, FRM- MOD FRM, SME
SUBRND- SUBANG, MIC FN- V FN XLN, CHRT: DCRSE TO TR, MSTLY CLR, OCC
WHT, HRD, ANG, SHRP, TR GLD- LT YEL FLOR, NO VIS CUT, NO RESD RING

WOB: 28.8
RPM: 57
PP: 2475
SPM: 73

MUD CK @: 9,336'
MW: 8.80
FV: 31
PV: 4
YP: 4
GEL: 1/2/0
SOL: 3.1
OIL/WAT: 0.0/96.5
PH: 10.0
MA: 0.50
FA: 0.10/0.3

BG GAS 35-42 U.

BG GAS 32-42 U.

BG ASG 32-39 U.

BG GAS 33-37 U.

SANDRIDGE ENERGY: Ariana 3419 1-7H Horizontal

KD

KD

0
0.01
0.1
Oil Indicator
10

10
150
ROP (min/ft)
MWD Gamma (API)

9400

9450

9500

9550

9600

5345 TVD

MD 9572 TVD 5348.35
INC 92.6 AZ 178.8
VS 4577.3

MD 9382 TVD 5356.55
INC 90.7 AZ 178.9
VS 4387.57

MD 9477 TVD 5353.24
INC 93.3 AZ 178.6
VS 4482.47

DD FRM, OCC
DOLO LS:
SLI FRM,
OPQ, OCC

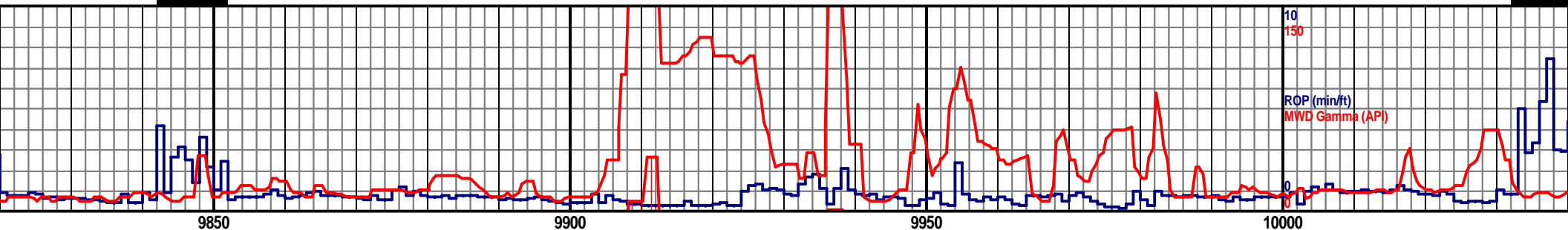
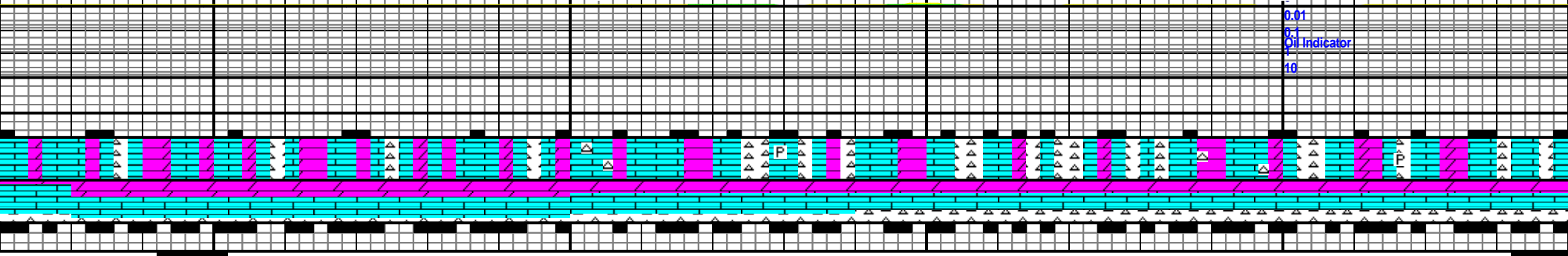
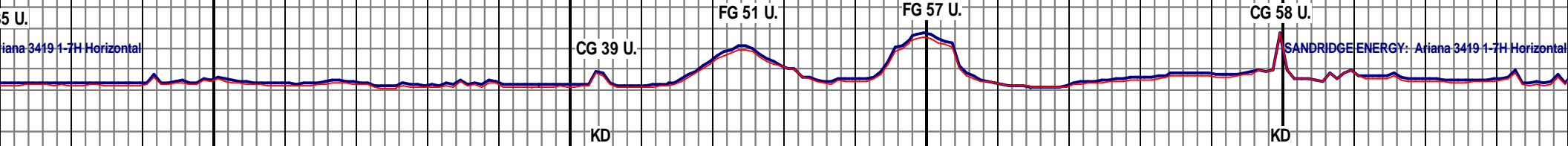
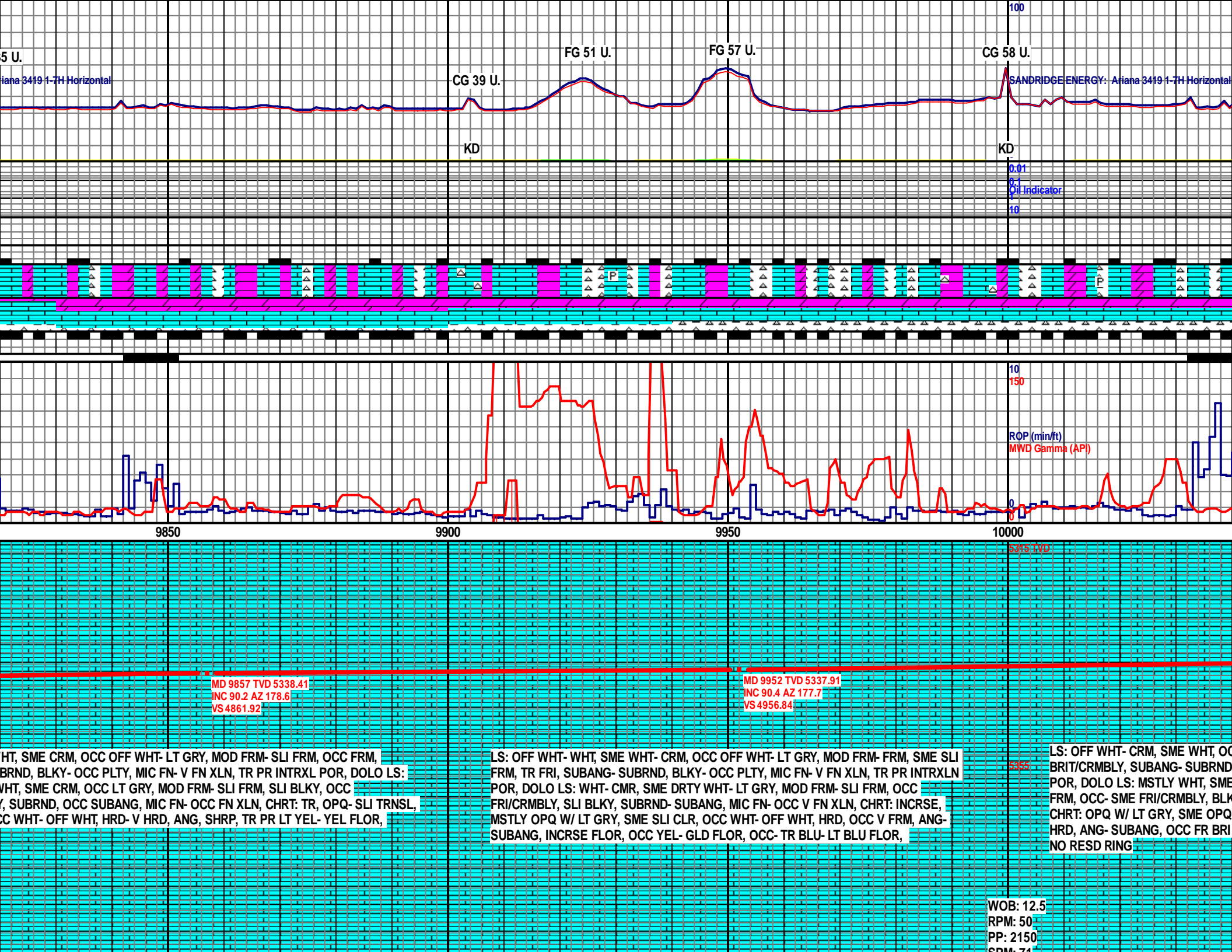
LS: WHT- OFF WHT, SME DRTY WHT- CRM, OCC LT GRY, FRM- MOD FRM, TR SLI FRM,
SUBANG- SUBRND, PRED MIC FN XLN, OCC V FN XLN, OCC PR FRAC POR, DOLO LS: TR,
WHT- CRM, SME WHT- OFF WHT, SME LT GRY- DRTY WHT, FRM- MOD FRM, SME SLI FRM,
SUBANG- SUBRND, MIC FN- V FN XLN, CHRT TO SLI TR, TR PR LT YEL- YEL FLOR, V SLI
TR LT BLU FLOR, NO VIS CUT, NO RESD RING

LS: PRED CRM- WHT, SME OFF WHT, OCC LT GRY- DRTY WHT, MOD FRM- FRM, TR V FRM,
TR SLI FRM, SUBANG- OCC SUBRND, BLKY- PLTY, MIC FN- OCC V FN XLN, DOLO/DOLO LS:
LT GRY- GRY, SME CRM- DRTY WHT, OCC WHT, MOD FRM- SLI FRM, SME CRMBLY/BRT,
SUBANG, V FN- MIC FN XLN, OCC SUCR, OCC INTRXLN POR, CHRT: TR, MSTLY OPQ- GRY,
OCC TRNSL, OCC OFF WHT- WHT, HRD- V FRM, ANG, SLI INCRSE FLOR, PR YEL- LT YEL
FLOR, NO CUT, NO RESD RING

NOTE TVD
ADJUSTME

WOB: 24.7
RPM: 55
PP: 2409
SPM: 73

WC
RP
PP
SP



MD 9857 TVD 5338.41
INC 90.2 AZ 178.6
VS 4861.92

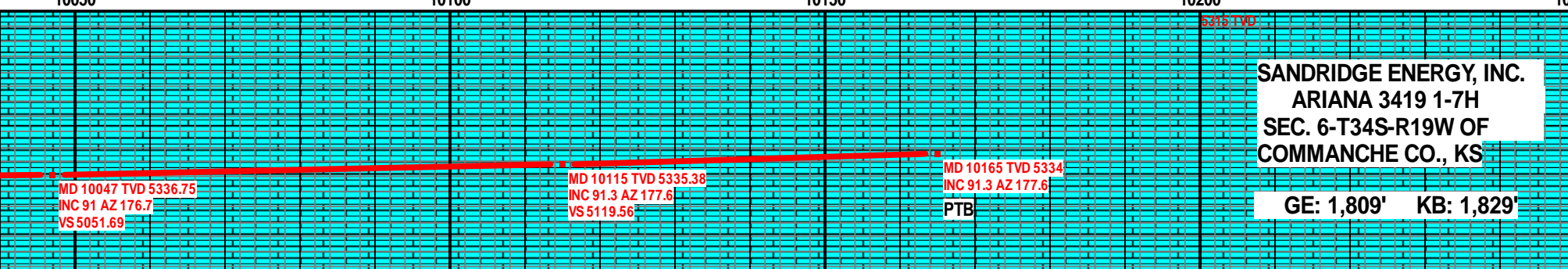
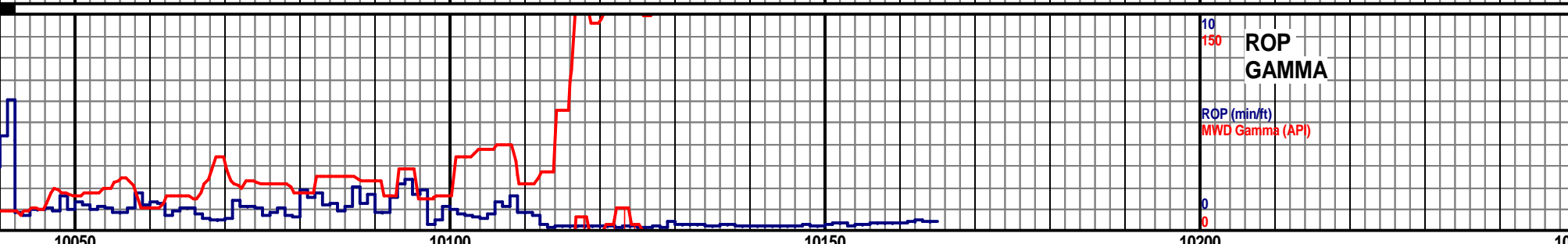
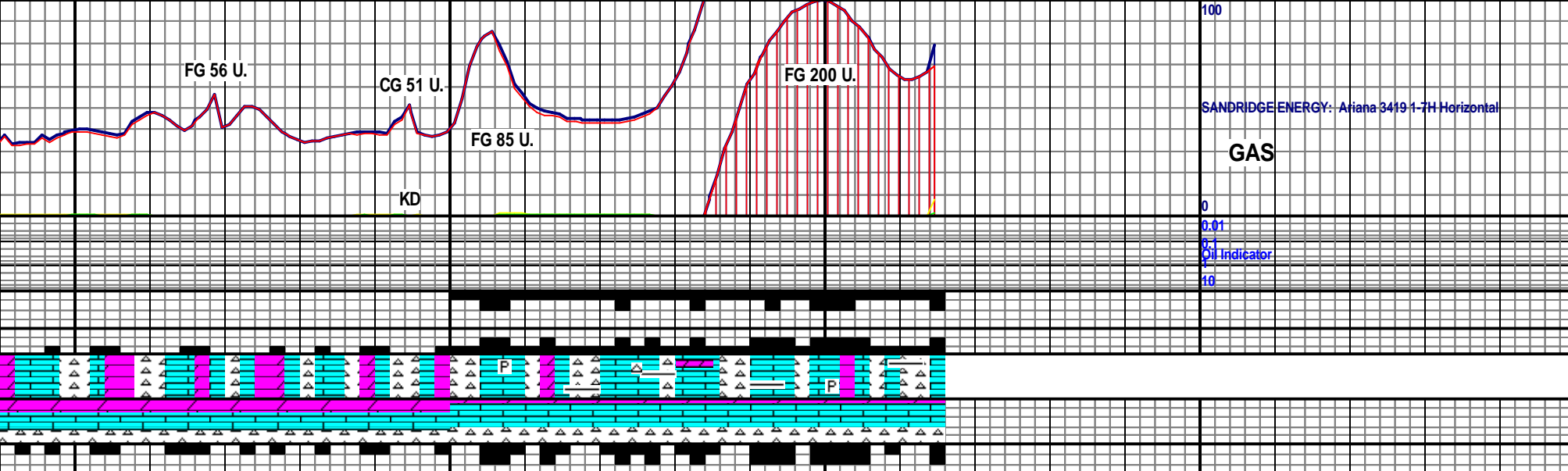
MD 9952 TVD 5337.91
INC 90.4 AZ 177.7
VS 4956.84

WHT, SME CRM, OCC OFF WHT- LT GRY, MOD FRM- SLI FRM, OCC FRM,
BRND, BLKY- OCC PLTY, MIC FN- V FN XLN, TR PR INTRXL POR, DOLO LS:
WHT, SME CRM, OCC LT GRY, MOD FRM- SLI FRM, SLI BLKY, OCC
SUBRND, OCC SUBANG, MIC FN- OCC FN XLN, CHRT: TR, OPQ- SLI TRNSL,
OCC WHT- OFF WHT, HRD- V HRD, ANG, SHRP, TR PR LT YEL- YEL FLOR,

LS: OFF WHT- WHT, SME WHT- CRM, OCC OFF WHT- LT GRY, MOD FRM- FRM, SME SLI
FRM, TR FRI, SUBANG- SUBRND, BLKY- OCC PLTY, MIC FN- V FN XLN, TR PR INTRXLN
POR, DOLO LS: WHT- CMR, SME DRTY WHT- LT GRY, MOD FRM- SLI FRM, OCC
FRI/CRMBLY, SLI BLKY, SUBRND- SUBANG, MIC FN- OCC V FN XLN, CHRT: INCRSE,
MSTLY OPQ W/ LT GRY, SME SLI CLR, OCC WHT- OFF WHT, HRD, OCC V FRM, ANG-
SUBANG, INCRSE FLOR, OCC YEL- GLD FLOR, OCC- TR BLU- LT BLU FLOR,

LS: OFF WHT- CRM, SME WHT, OC
BRIT/CRMBLY, SUBANG- SUBRND
POR, DOLO LS: MSTLY WHT, SME
FRM, OCC- SME FRI/CRMBLY, BLK
CHRT: OPQ W/ LT GRY, SME OPQ
HRD, ANG- SUBANG, OCC FR BRI
NO RESD RING

WOB: 12.5
RPM: 50
PP: 2150
SPM: 71



CC OFF WHT- LT GRY, MOD FRM- SLI FRM, OCC FRM, TR
BLKY- PLTY, MIC FN- SME V FN XLN, TR PR INTRXLN
CRM, OCC DRTY WHT- LT GRY, MOD FRM- SLI FRM, TR
Y- SLI BLKY, SUBANG- SUBRND, MIC FN- V FN XLN,
- SLI CLR, OCC WHT, TR OFF WHT, HRD- V FRM, OCC V
YEL- GLD FLOR, TR PR BLU- LT BLU FLOR, NO VIS CUT,

LS: PRED WHT, SME WHT- CRM, OCC OFF WHT W/ V LT TAN/AMBR STN, TR LT GRY, FRM-
MOD FRM, OCC SLI FRM, MSTLY SUBRND- SUBANG, BLKY, OCC PLTY, MIC FN- V FN XLN,
TR FN XLN, OCC PR FRAC POR, CHRT: MSTLY WHT, SME OFF WHT- OPQ, OCC OPQ- CLR,
HRD- V FRM, ANG- OCC SUBANG, TR W/ V LT ORNG/AMBR STN, DOLO LS: DCRSNG TO TR,
WHT- OFF WHT, OCC DRTY WHT- LT GRY, TR SHALE W/ ABUN MIC EMBDD PYR, INCNSE TO
FR FLOR, PRED LT YEL, SME LT YEL- V LT GRN/LT BLU FLOR, SLI FR MLKY STRMNG CUT,
PR THN- MED V LT BLU RESD RING

SANDRIDGE ENERGY, INC.
ARIANA 3419 1-7H
SEC. 6-T34S-R19W OF
COMMANCHE CO., KS

GE: 1,809' KB: 1,829'

DRILLERS TD @ 10,165' MD
ON 4/19/2013