



Pioneer Energy Services

## Dual Compensated Porosity Log

**Company** Lebsack Oil Production, Inc.  
**Well** Parlette #1-11  
**Field** West Damme  
**County** Finney  
**State** Kansas

**Location** SW NE NE SE  
 2300' FSL / 335' FEL  
**Sec:** 11 **Twp:** 22S **Rge:** 34W

**Permanent Datum** Ground Level Elevation 2918  
**Log Measured From** Kelly Bushing 13 Ft. Above Perm. Datum  
**Drilling Measured From** Kelly Bushing

**Other Services**  
 DILMEL

**Elevation**  
 K.B. 2931  
 D.F. 2918  
 G.L. 2918

15-055-22207-00-00

API No.

Date 3/16/2013

Run Number One

Type Log CNL / CDL

Depth Driller 4860

Depth Logger 4858

Bottom Logged Interval 4837

Top Logged Interval 3600

Type Fluid In Hole Chemical

Salinity, PPM CL 3900

Density 9.4

Level Full

Max. Rec. Temp. F 125

Operating Rig Time 4 Hours

Equipment -- Location 17 Days

Recorded By R. Barnhart

Witnessed By Wayne Lebsack

Josh Austin

**Borehole Record**      **Casing Record**

Run No.	Bit	From	To	Size	Wgt.	From	To
One	12.25	00	435	8.625	23#	00	435
Two	7.875	435	TD				

<<< Fold Here >>>

All interpretations are opinions based on inferences from electrical or other measurements and we cannot and do not guarantee the accuracy or correctness of any interpretation, and we shall not, except in the case of gross or willful negligence on our part, be liable or responsible for any loss, costs, damages, or expenses incurred or sustained by anyone resulting from any interpretation made by any of our officers, agents or employees. These interpretations are also subject to our general terms and conditions set out in our current Price Schedule.

### Comments

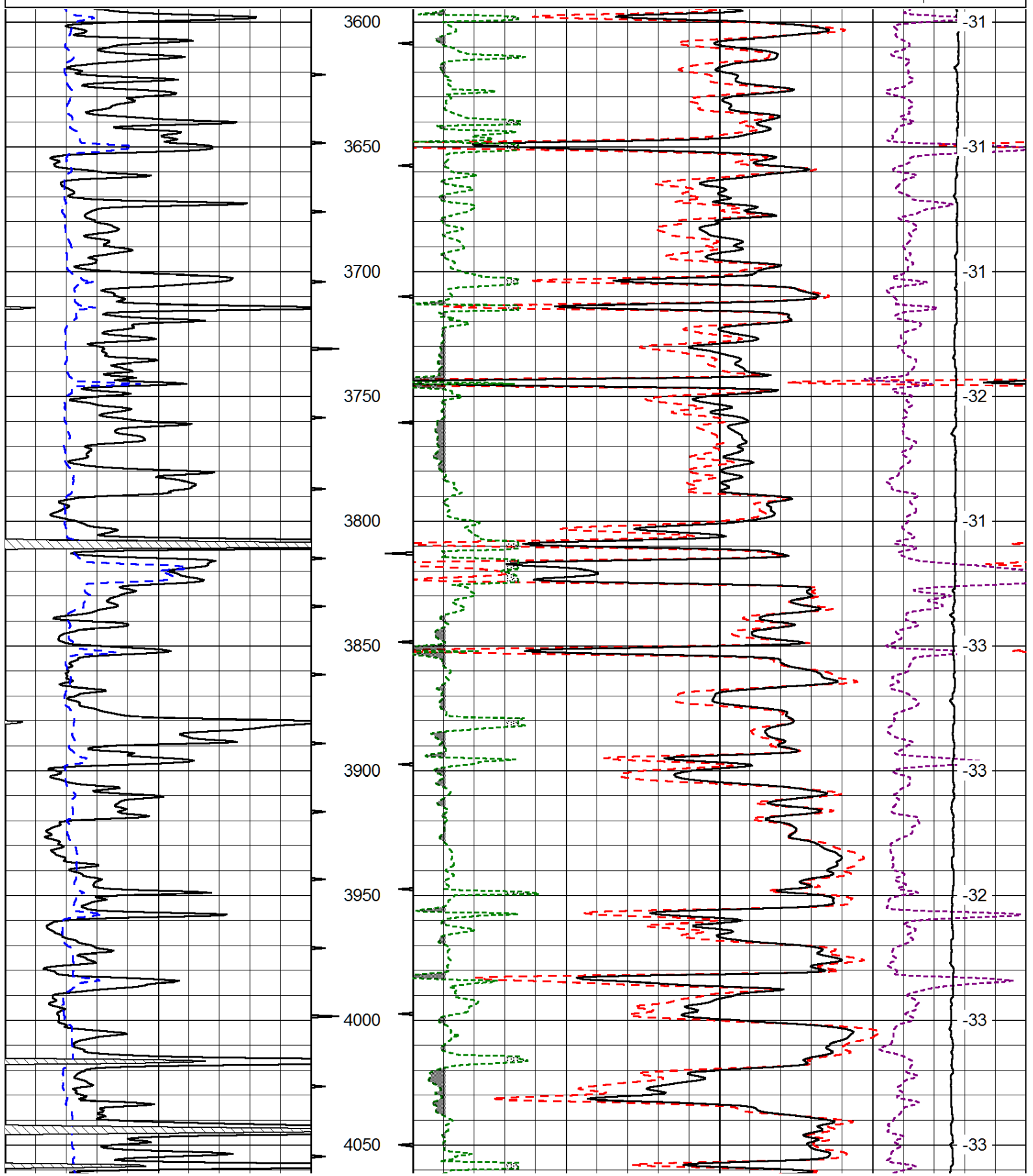
Thank you for using Log-Tech, Inc.  
 (785) 625-3858  
  
 Garden City, KS:  
 10N to Tennis Rd., 8 1/2W, S into

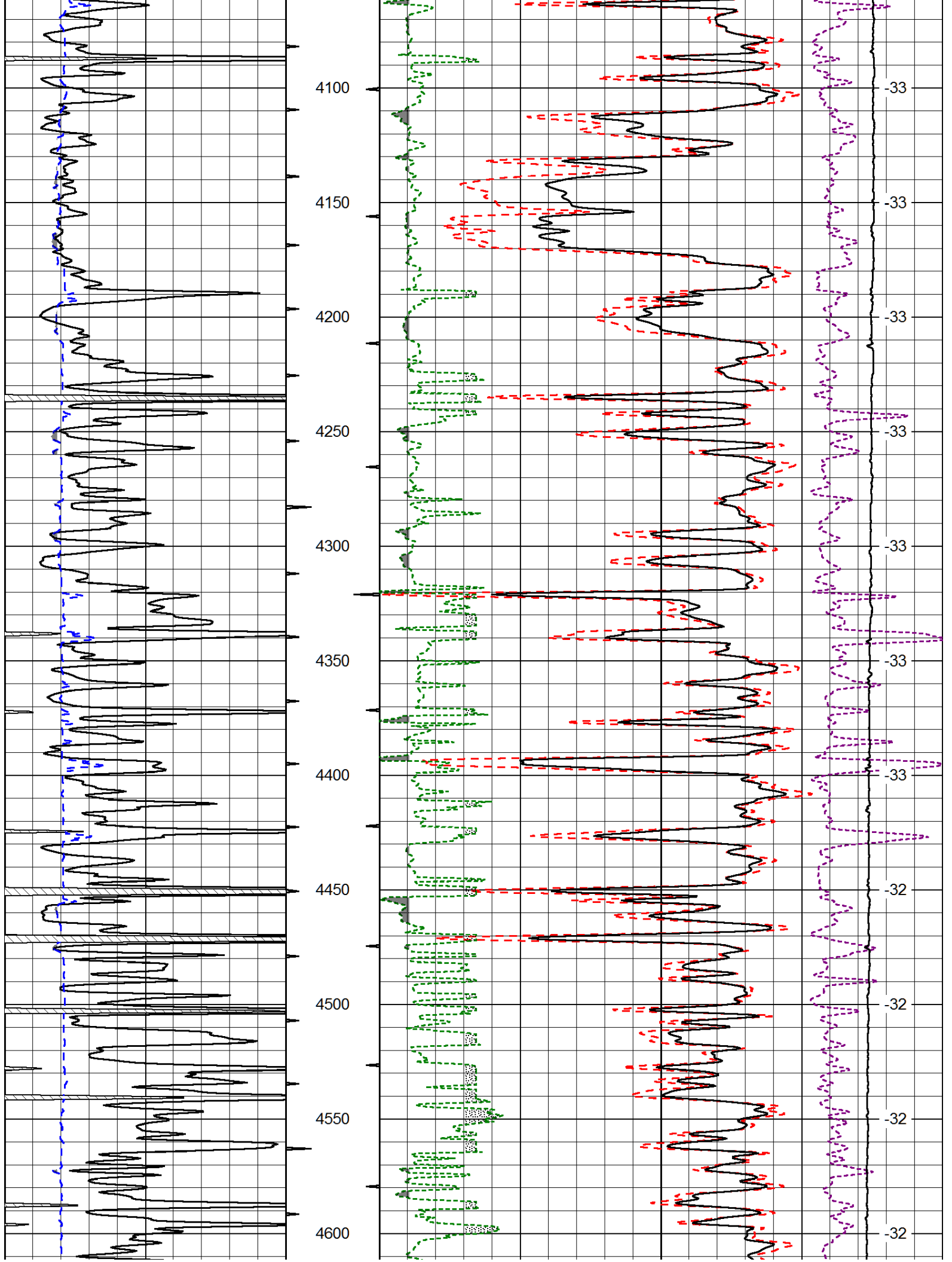
Database File: lebsack\_hd.db  
 Dataset Pathname: dil/lbsmain  
 Presentation Format: cdl  
 Dataset Creation: Sat Mar 16 12:25:48 2013  
 Charted by: Depth in Feet scaled 1:600

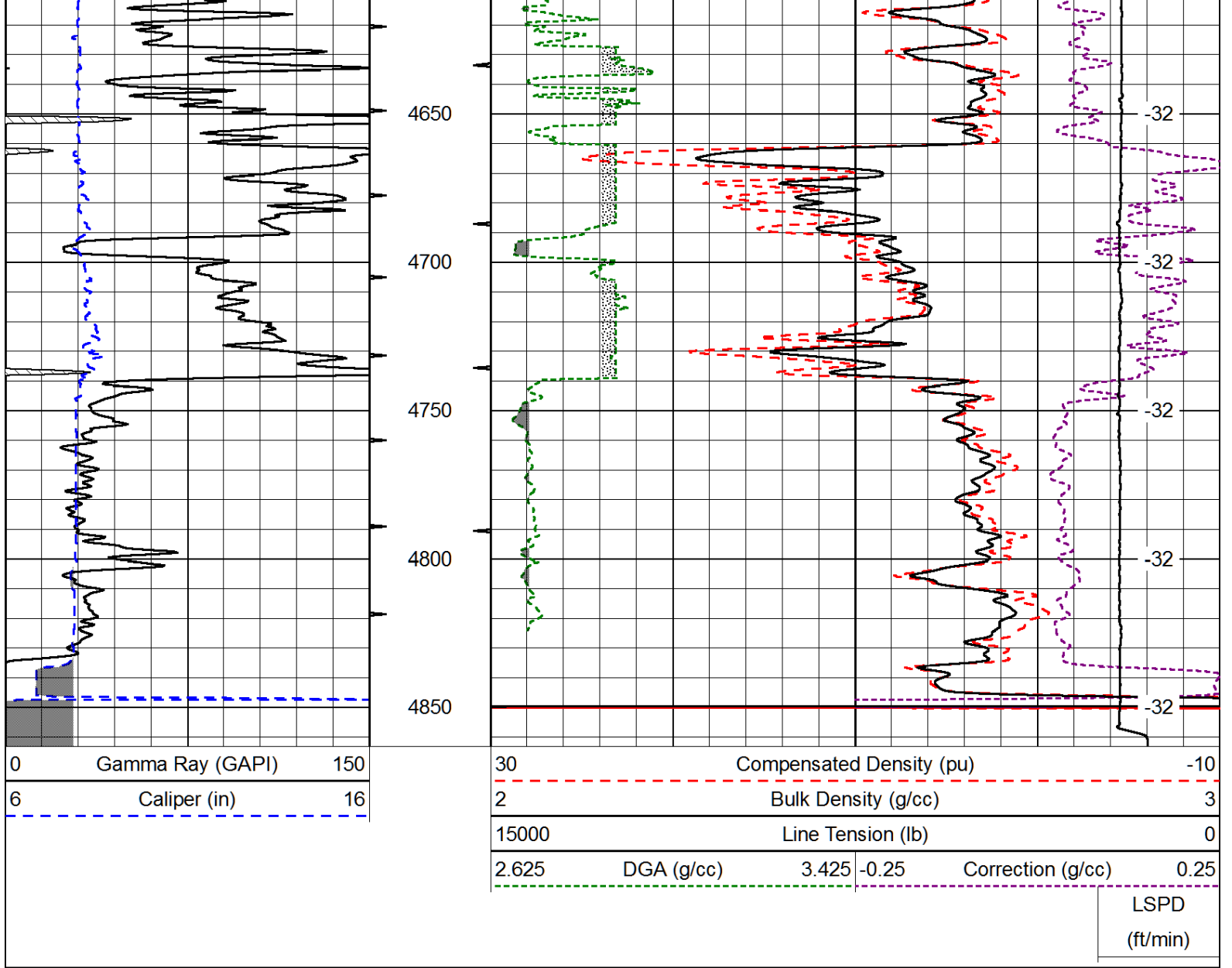
0	Gamma Ray (GAPI)	150
6	Caliper (in)	16

30	Compensated Density (pu)		-10
2	Bulk Density (g/cc)		3
15000	Line Tension (lb)		0
2.625	DGA (g/cc)	3.425	-0.25
		Correction (g/cc)	0.25

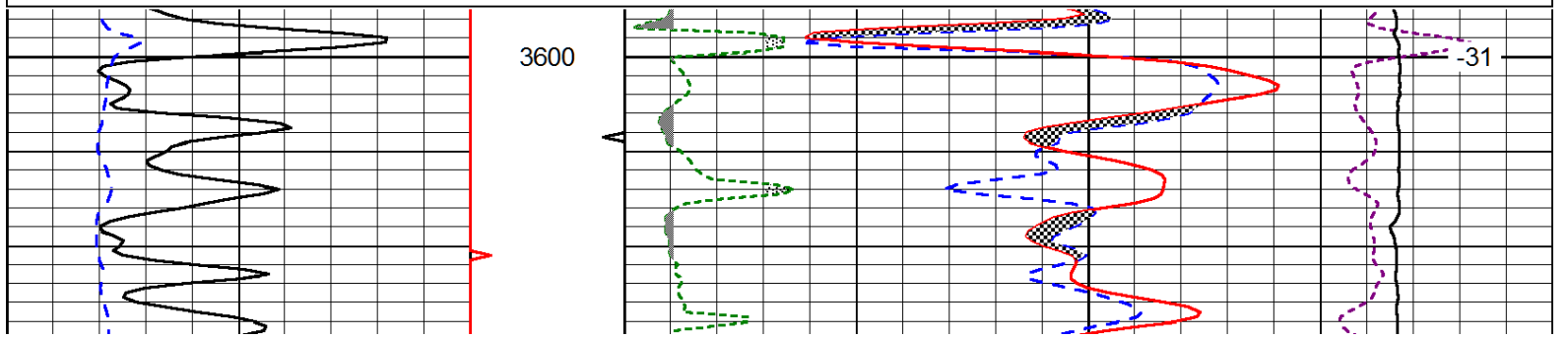
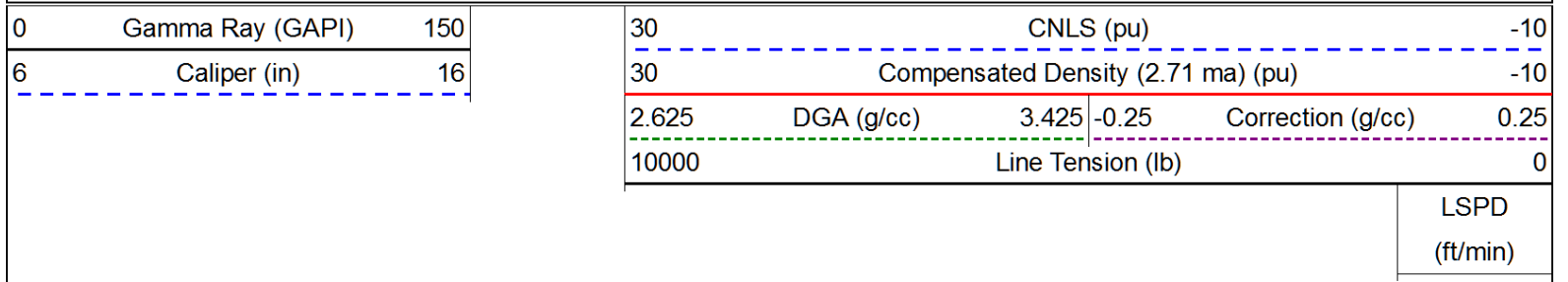
LSPD  
(ft/min)

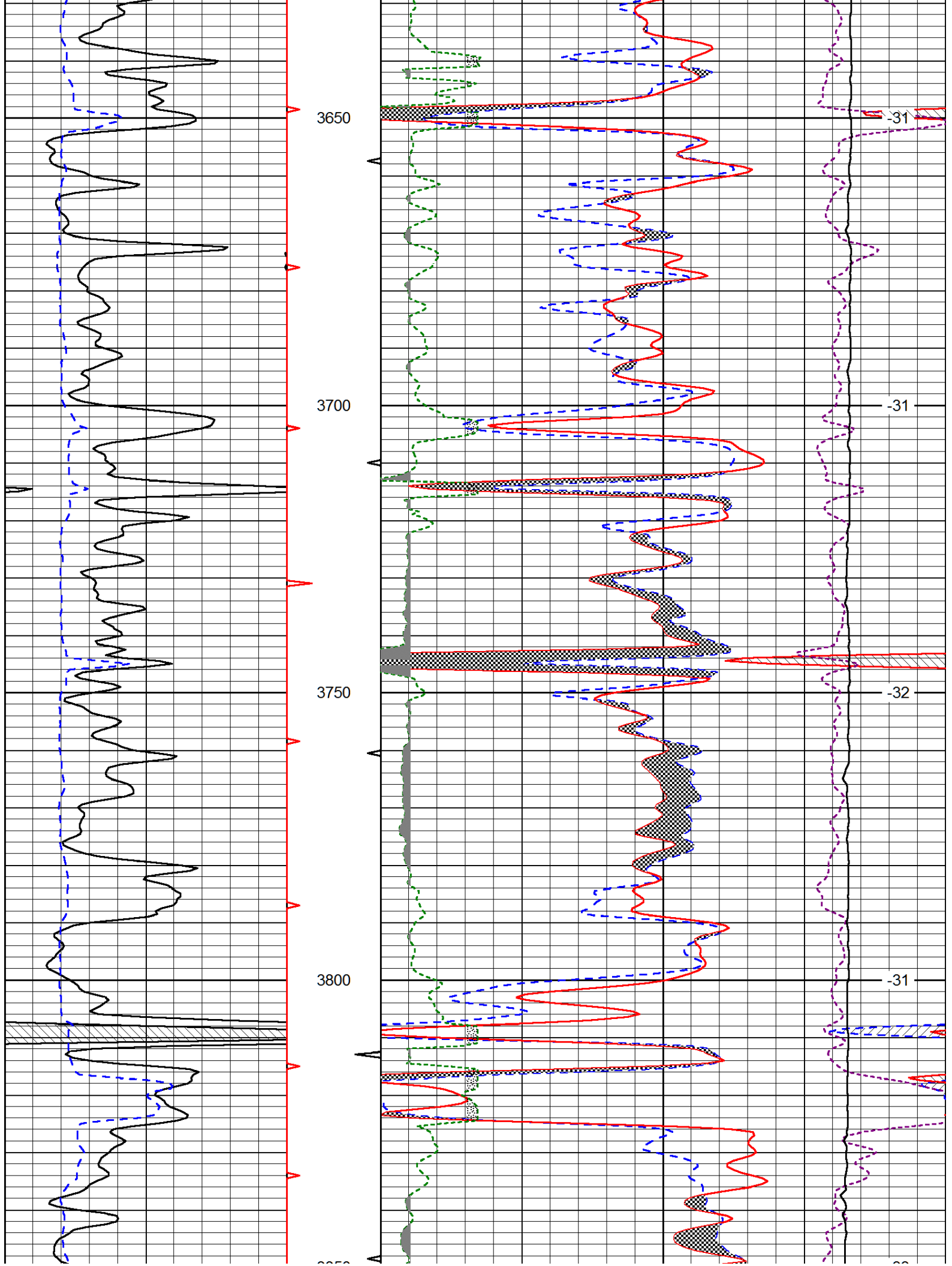


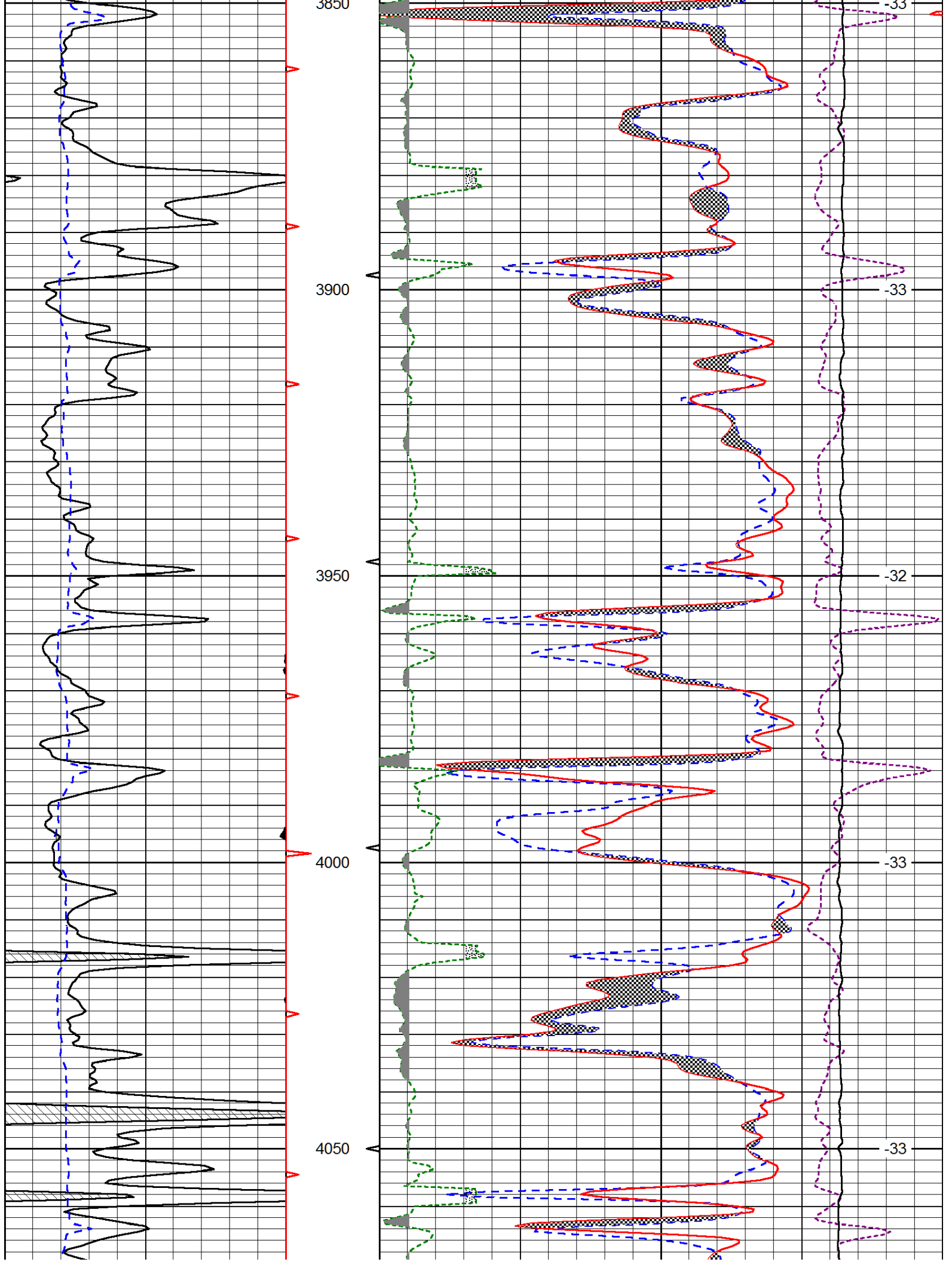


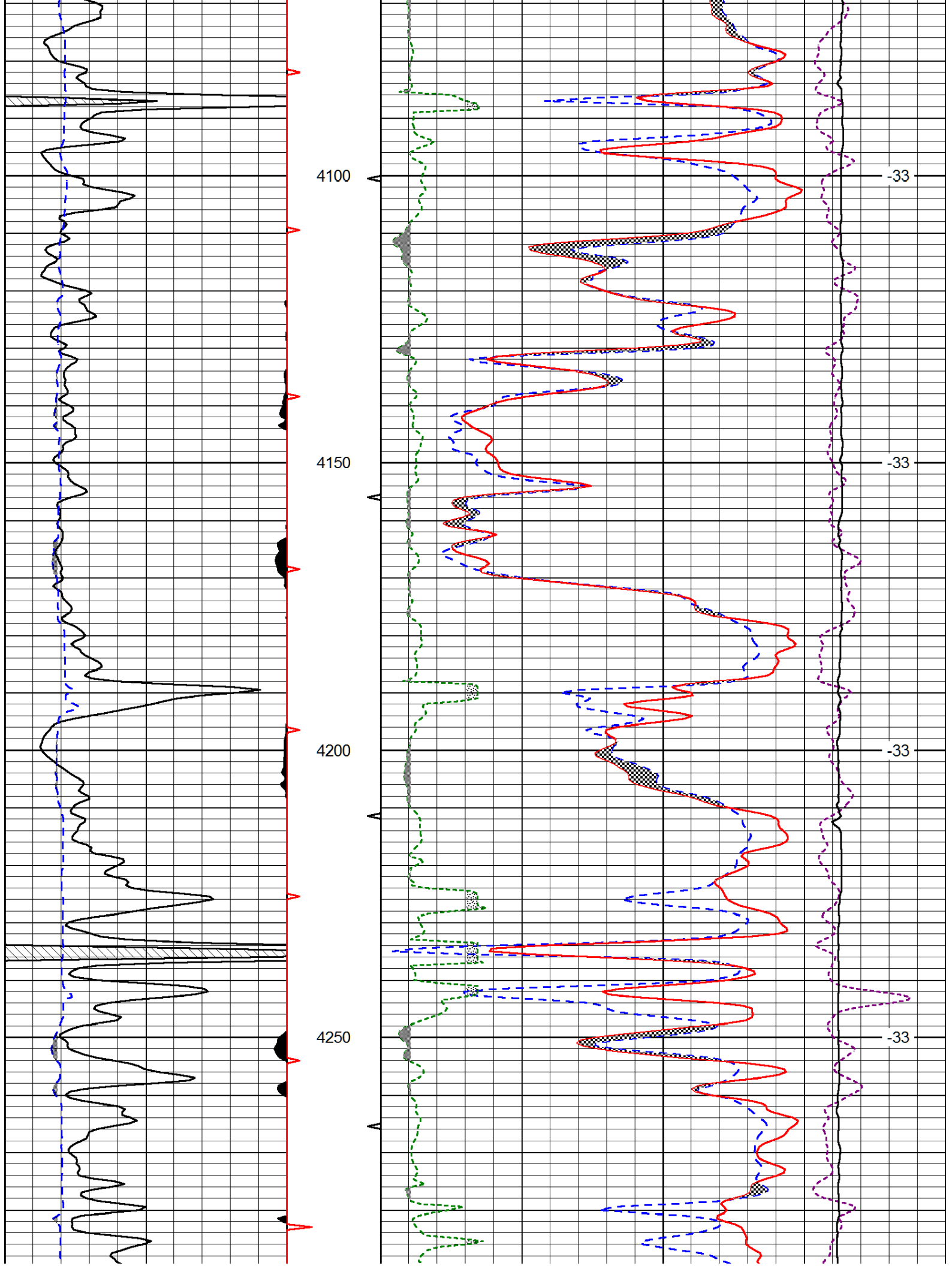


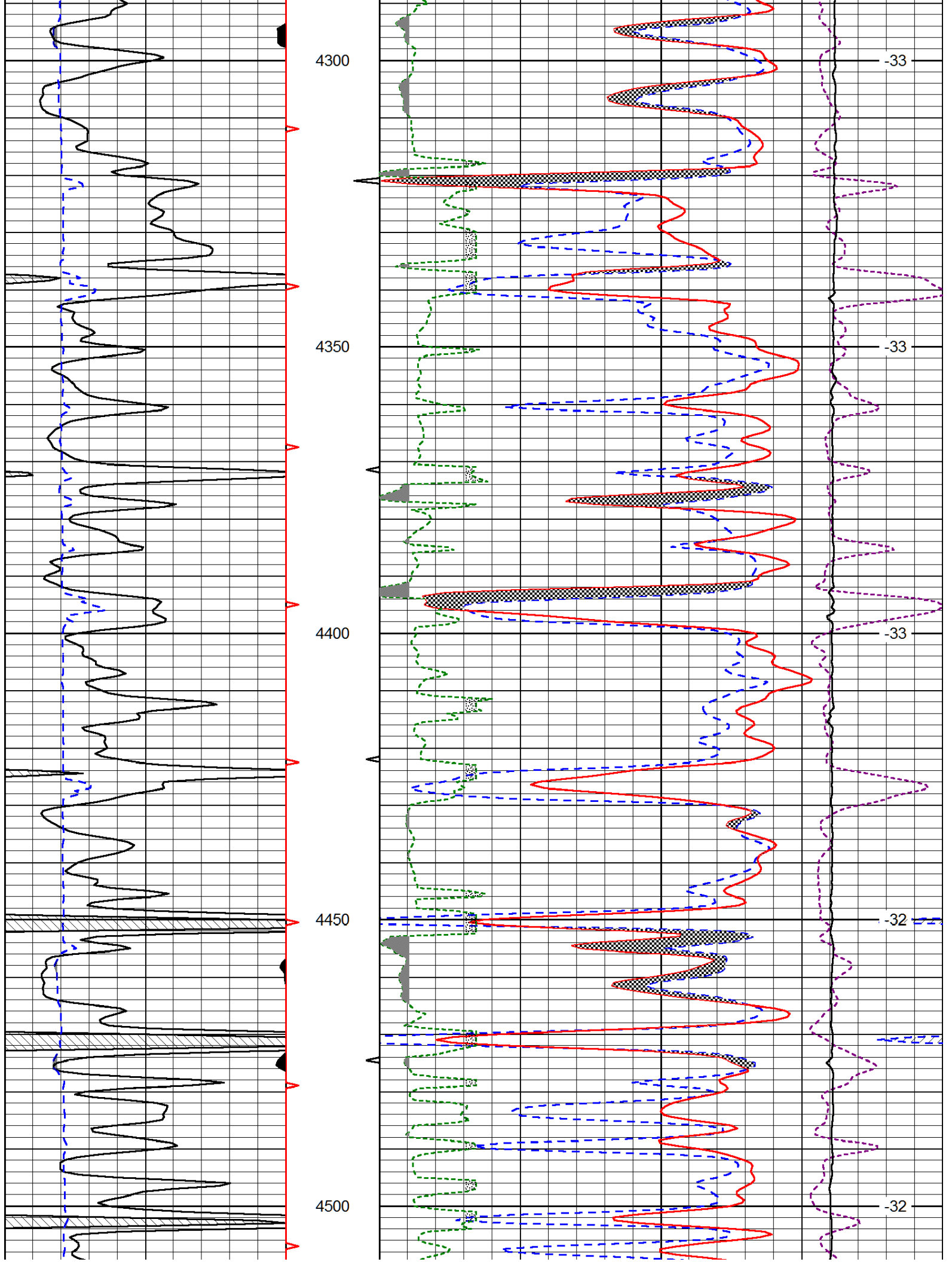
Database File: lebsack\_hd.db  
 Dataset Pathname: dil/lbsmain  
 Presentation Format: cndlspec  
 Dataset Creation: Sat Mar 16 12:25:48 2013  
 Charted by: Depth in Feet scaled 1:240

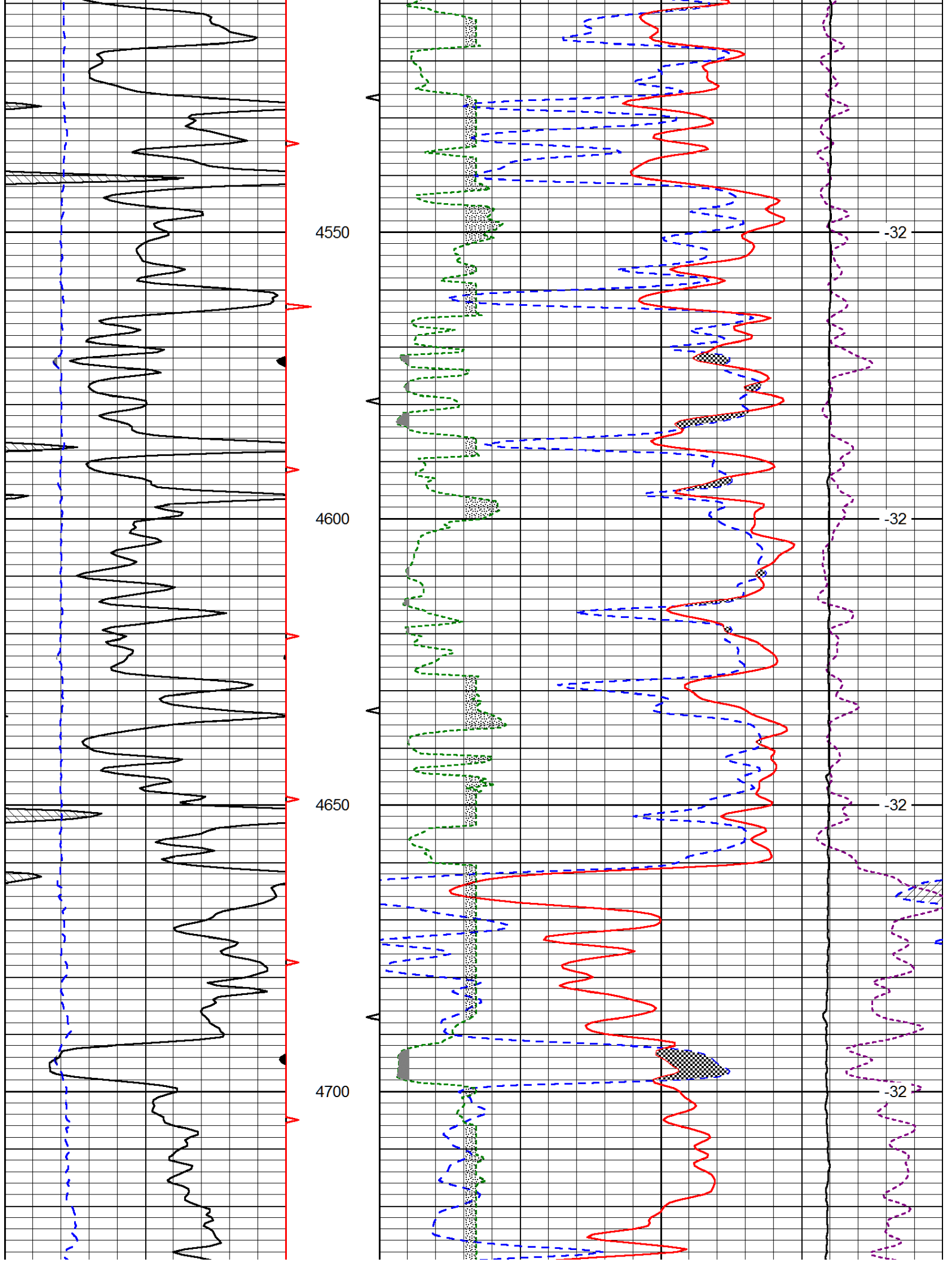


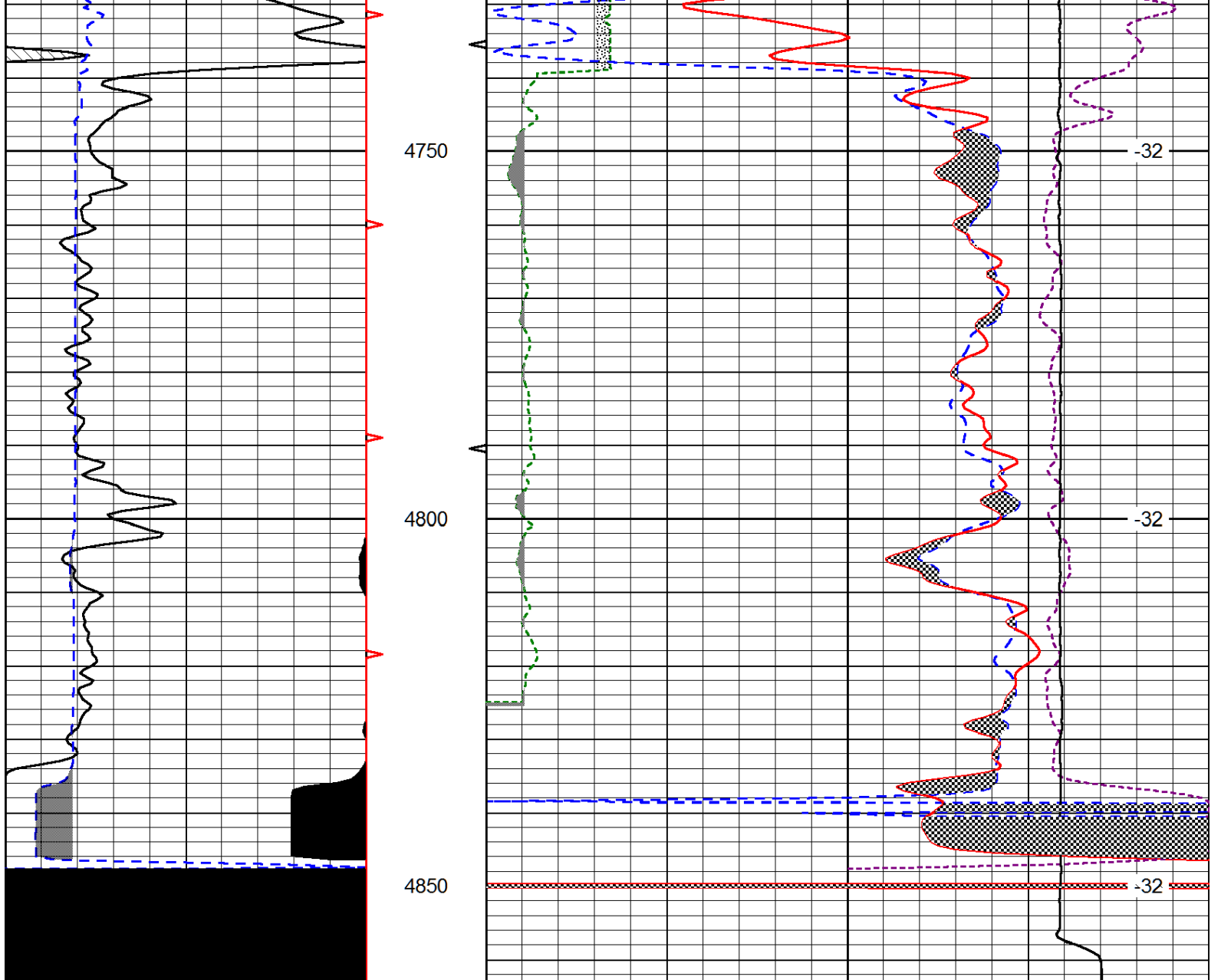












0	Gamma Ray (GAPI)	150
6	Caliper (in)	16

30	CNLS (pu)			-10	
30	Compensated Density (2.71 ma) (pu)			-10	
2.625	DGA (g/cc)	3.425	-0.25	Correction (g/cc)	0.25
10000	Line Tension (lb)			0	

LSPD  
(ft/min)