



Pioneer Energy Services

Microresistivity Log

API No. 15-055-22207-00-00

Company **Lebsack Oil Production, Inc.**
 Well **Parlette #1-11**
 Field **West Damme**
 County **Finney** State **Kansas**

Location **SW NE NE SE
2300' FSL / 335' FEL**

Sec: 11 Twp: 22S Rge: 34W

Other Services
CNL / CDL
DIL

Permanent Datum	Ground Level	Elevation 2918	K.B. 2931 D.F. 2918 G.L. 2918
Log Measured From	Kelly Bushing	13 Ft. Above Perm. Datum	
Drilling Measured From	Kelly Bushing		
Date	3/16/2013		
Run Number	Two		
Depth Driller	4860		
Depth Logger	4858		
Bottom Logged Interval	4857		
Top Log Interval	3600		
Casing Driller	8.625 @ 435		
Casing Logger	436		
Bit Size	7.875		
Type Fluid in Hole	Chemical		
Salinity, ppm CL	3900		
Density / Viscosity	9.4 49		
pH / Fluid Loss	9.0 8.8		
Source of Sample	Flowline		
Rm @ Meas. Temp	0.46 @ 56		
Rmf @ Meas. Temp	0.35 @ 56		
Rmc @ Meas. Temp	0.62 @ 56		
Source of Rmf / Rmc	Charts		
Rm @ BHT	0.21 @ 125		
Operating Rig Time	4 Hours		
Max Rec. Temp. F	125		
Equipment Number	17		
Location	Hays		
Recorded By	R. Barnhart		
Witnessed By	Wayne Lebsack	Josh Austin	

<<< Fold Here >>>

All interpretations are opinions based on inferences from electrical or other measurements and we cannot and do not guarantee the accuracy or correctness of any interpretation, and we shall not, except in the case of gross or willful negligence on our part, be liable or responsible for any loss, costs, damages, or expenses incurred or sustained by anyone resulting from any interpretation made by any of our officers, agents or employees. These interpretations are also subject to our general terms and conditions set out in our current Price Schedule.

Comments

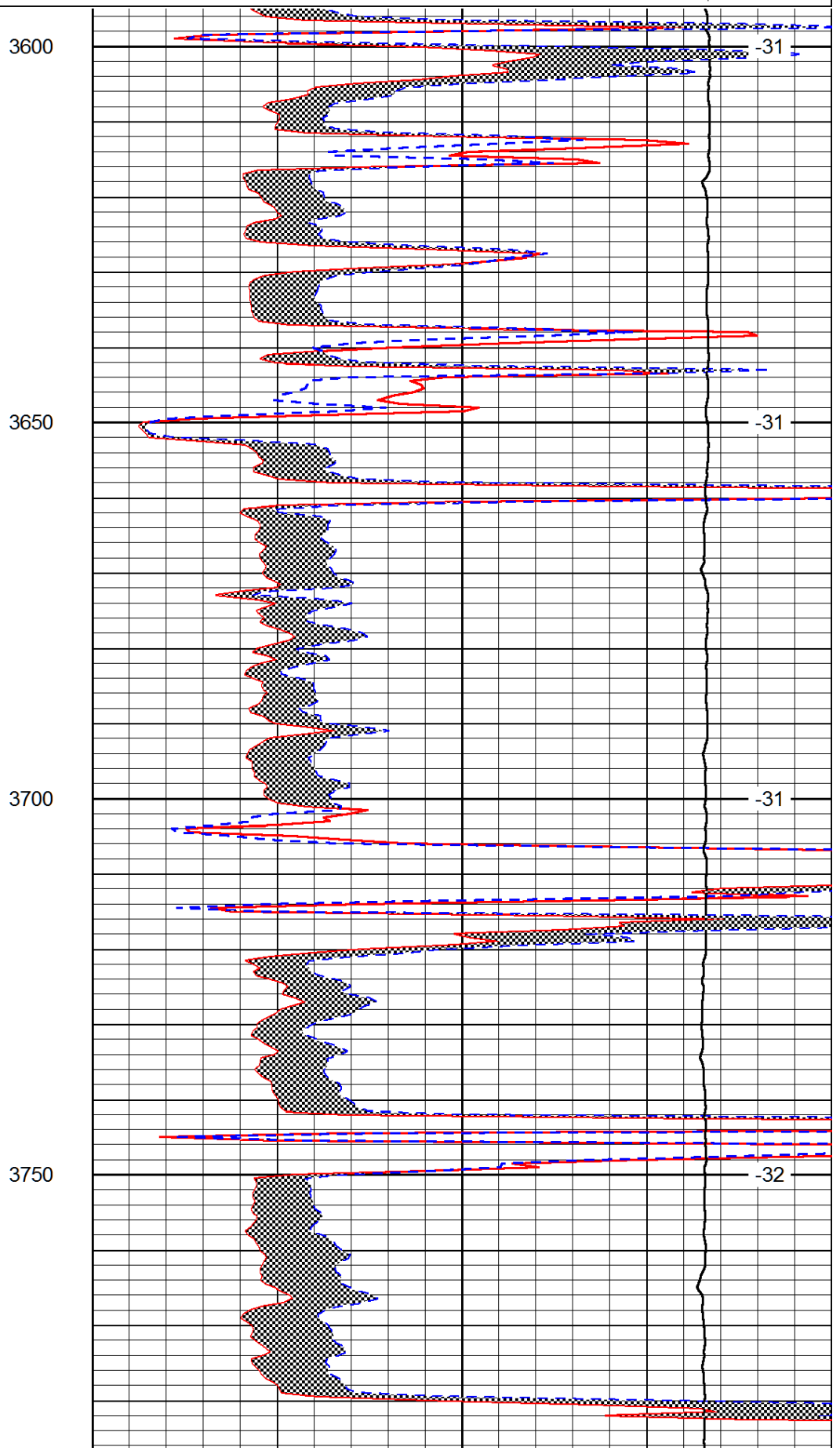
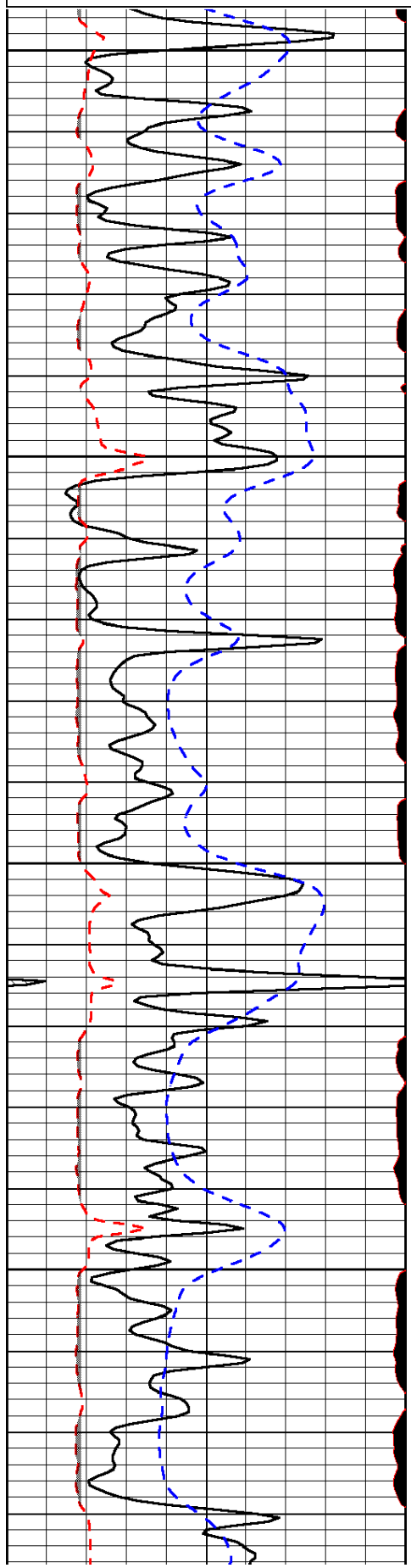
Thank you for using Log-Tech, Inc.
 (785) 625-3858

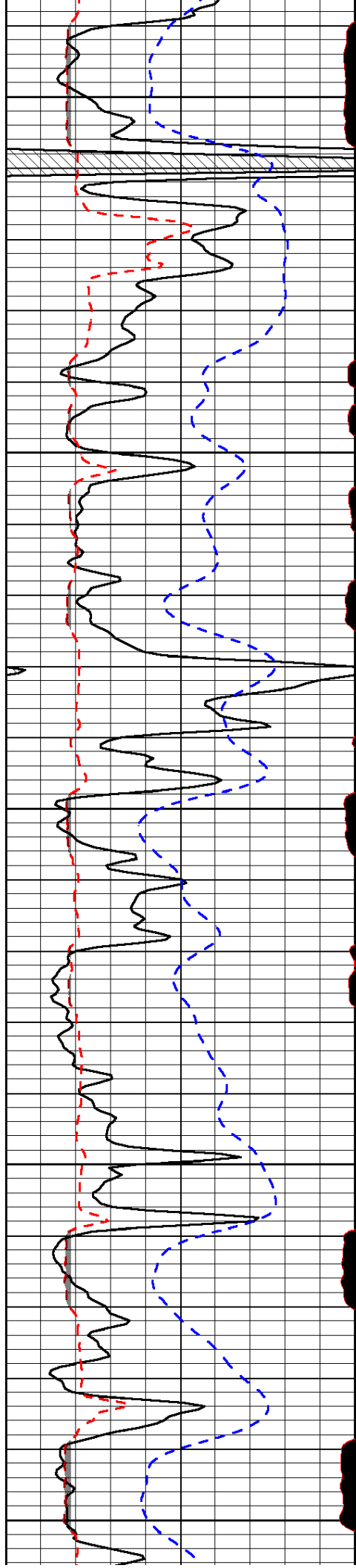
Garden City, KS:
 10N to Tennis Rd., 8 1/2W, S into

Database File: lebsack_hd.db
 Dataset Pathname: dil/lbsmain
 Presentation Format: micro
 Dataset Creation: Sat Mar 16 12:25:48 2013
 Charted by: Depth in Feet scaled 1:240

0	Gamma Ray (GAPI)	150
6	MCAL (in)	16
2.875	Mud Cake (in)	7.875
-200	SP (mV)	0

0	Micro Inverse 1 X 1 (Ohm-m)	40
0	Micro Normal 2" (Ohm-m)	40
10000	Line Weight (lb)	0
	LSPD (ft/min)	





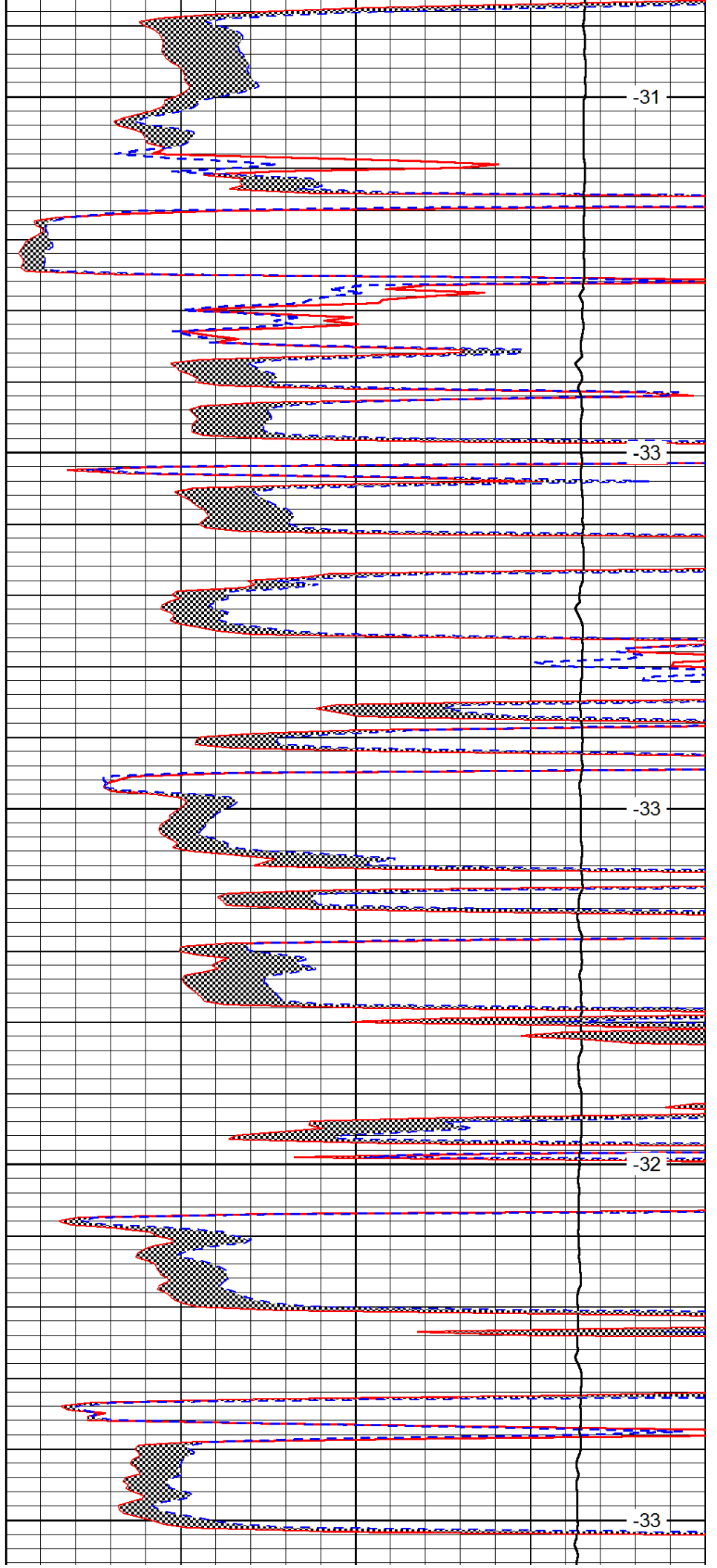
3800

3850

3900

3950

4000



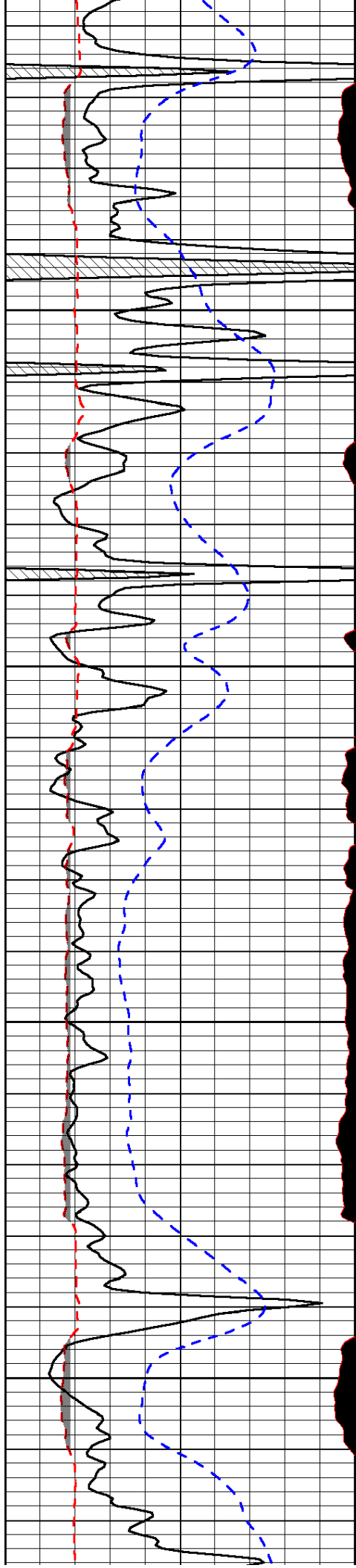
-31

-33

-33

-32

-33

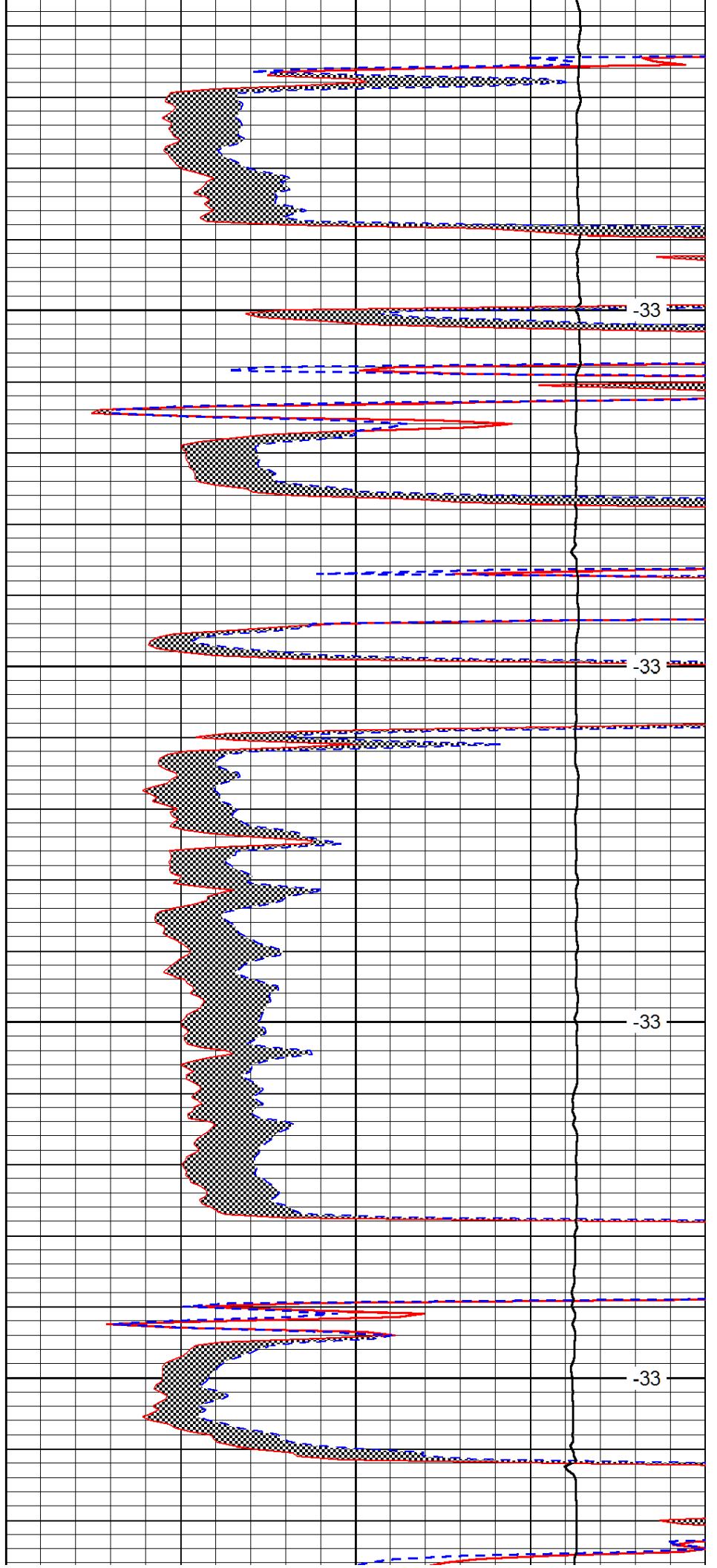


4050

4100

4150

4200

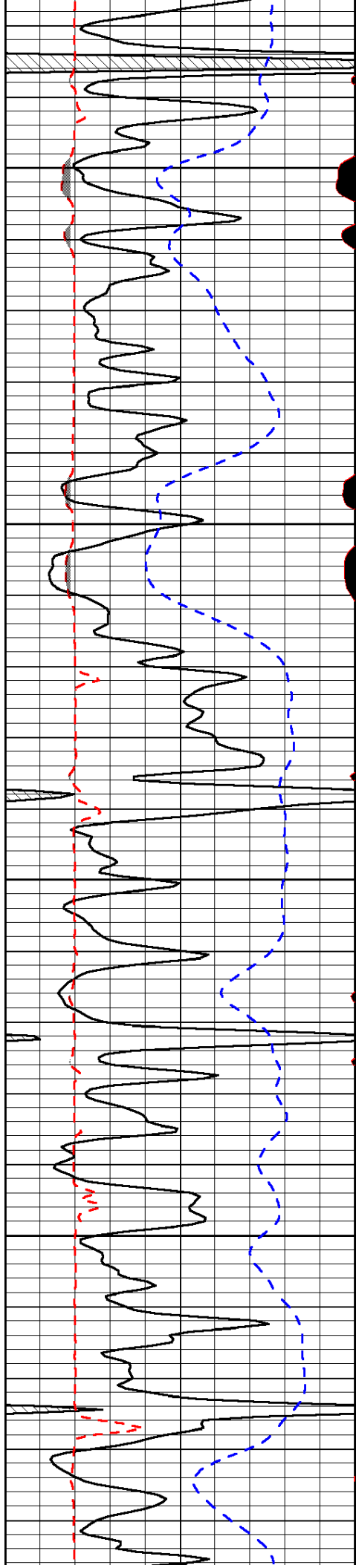


-33

-33

-33

-33

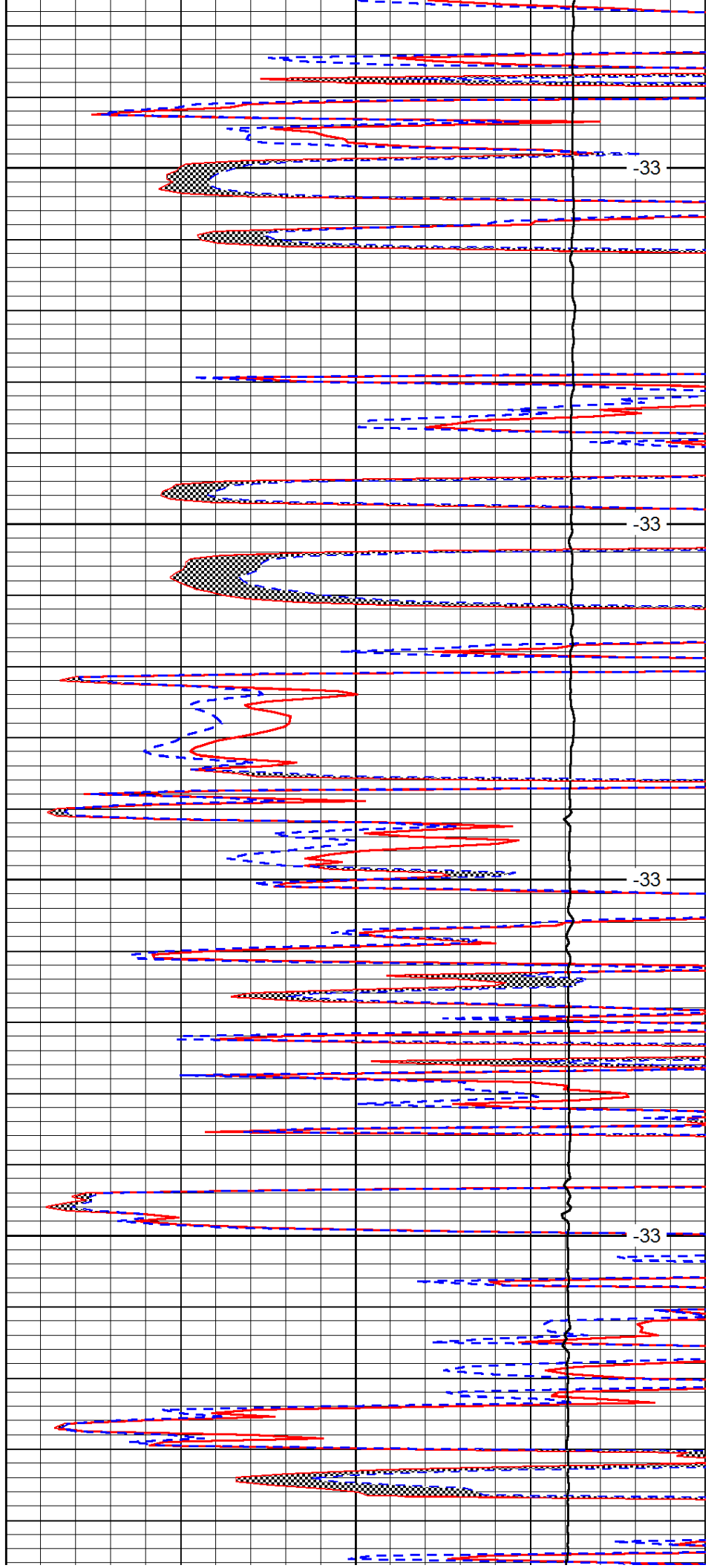


4250

4300

4350

4400

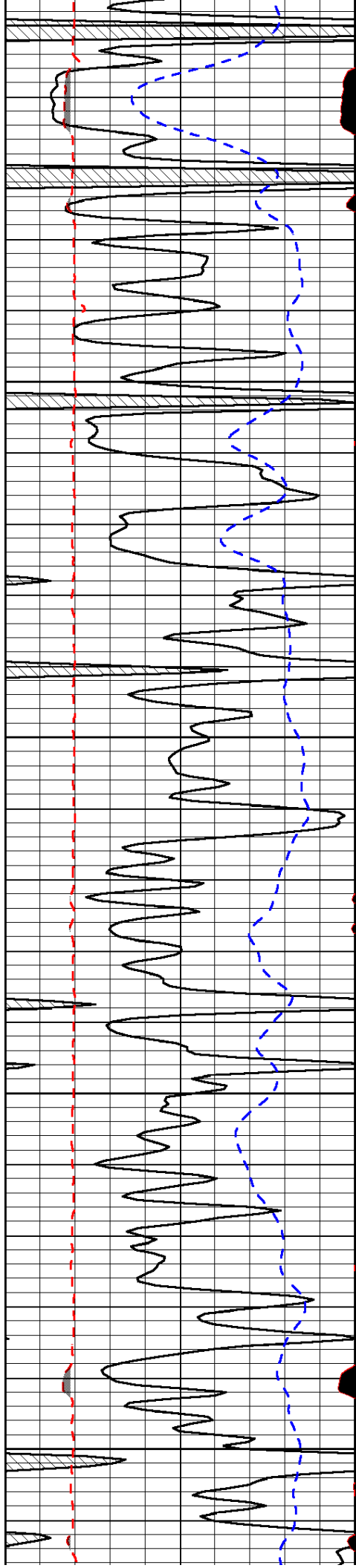


-33

-33

-33

-33



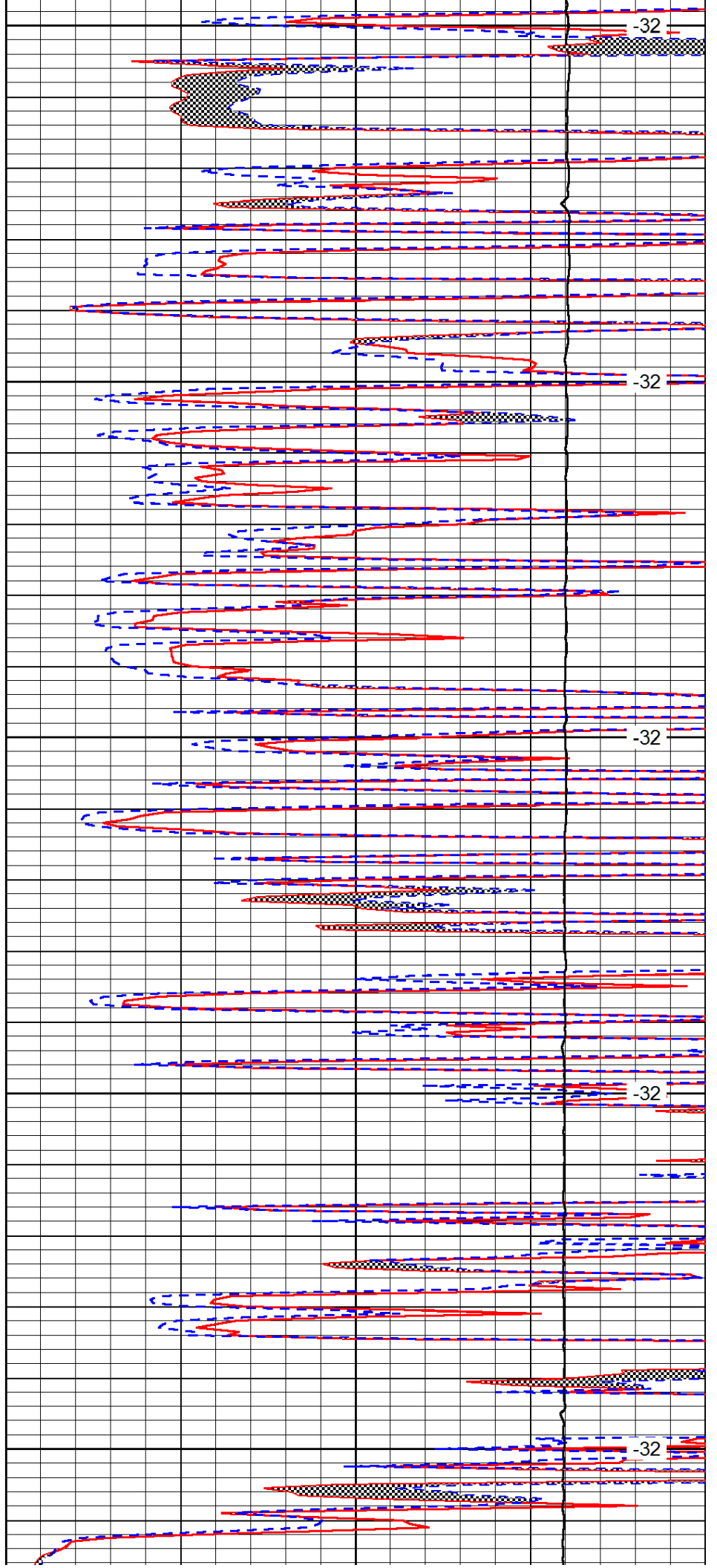
4450

4500

4550

4600

4650



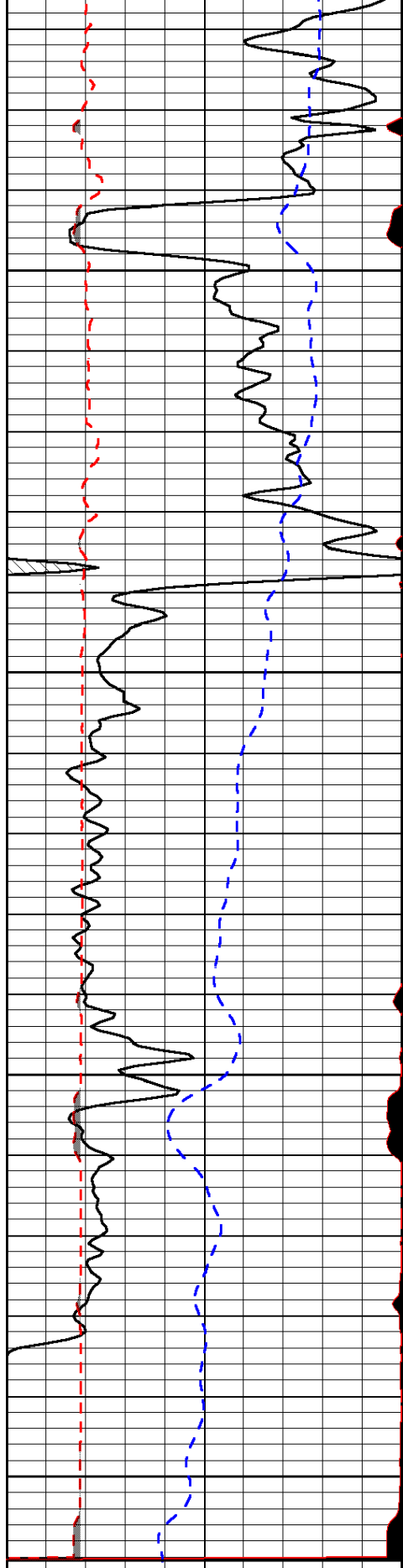
-32

-32

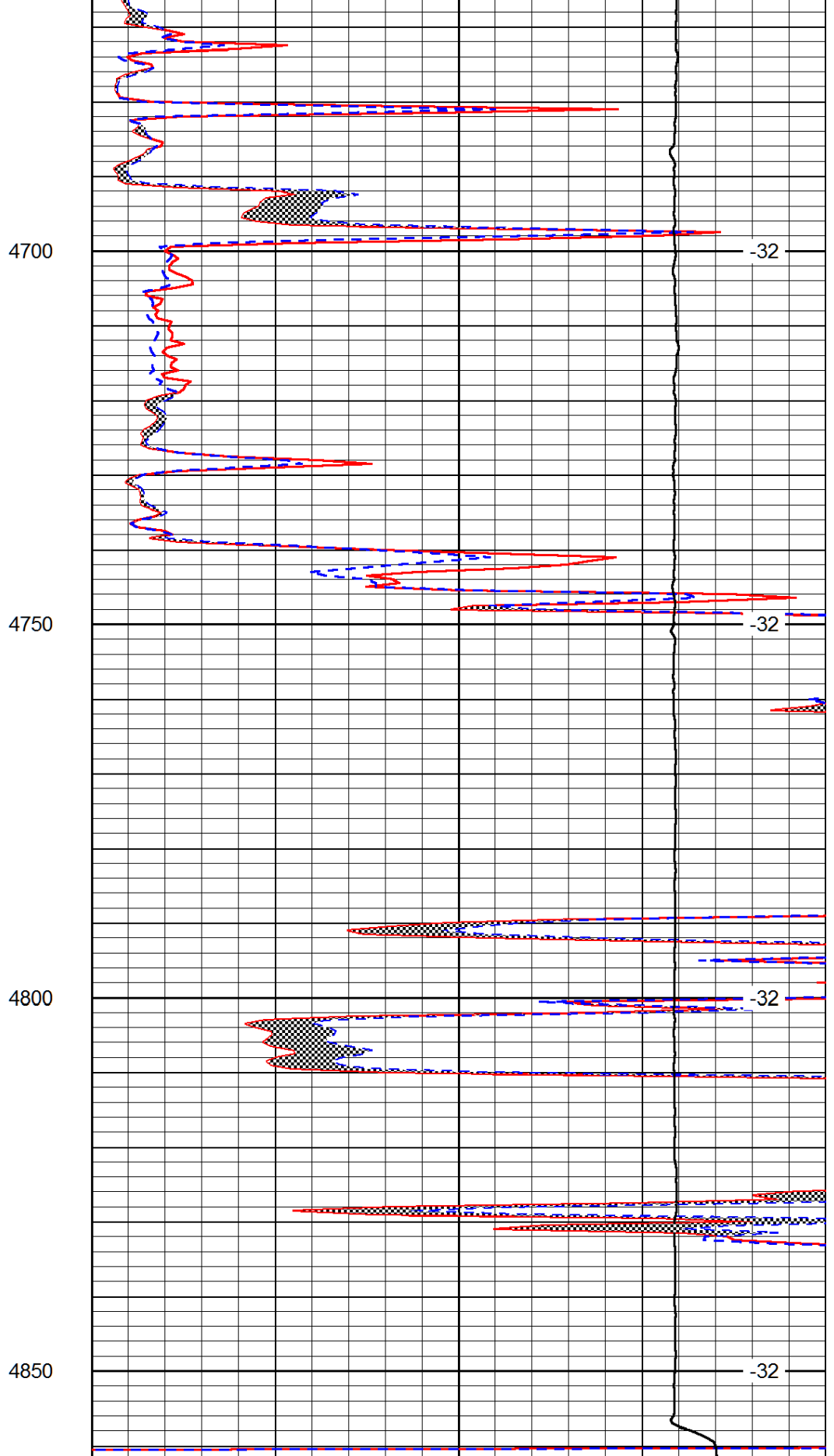
-32

-32

-32



0	Gamma Ray (GAPI)	150
6	MCAL (in)	16
2.875	Mud Cake (in)	7.875
-200	SP (mV)	0



0	Micro Inverse 1 X 1 (Ohm-m)	40
0	Micro Normal 2" (Ohm-m)	40
10000	Line Weight (lb)	0

LSPD
(ft/min)

