



**COMPLETION
& PRODUCTION
SERVICES CO.**

**SONIC
LOG**

Company RITCHIE EXPLORATION, INC.
Well SELENKE-HOCKERSMITH #1
Field
County GOVE State KANSAS

Company RITCHIE EXPLORATION, INC.
Well SELENKE-HOCKERSMITH #1
Field
County GOVE
State KANSAS

Location: API #: 15-063-22106-00-00
335' FSL & 2530' FEL
S2 - S2 - S2
SEC 22 TWP 13S RGE 31W
Permanent Datum GROUND LEVEL Elevation 2890
Log Measured From KELLY BUSHING 5' A.G.L.
Drilling Measured From KELLY BUSHING
Other Services
CNL/CDL
DIL
Elevation
K.B. 2895
D.F. 2893
G.L. 2890

Date	5/7/13		
Run Number	TWO		
Depth Driller	4770		
Depth Logger	4765		
Bottom Logged Interval	4755		
Top Log Interval	200		
Casing Driller	221		
Casing Logger	218		
Bit Size	7.875		
Type Fluid in Hole	CHEMICAL MUD	CHLORIDES 3.400	
Density / Viscosity	9.40 / 55		
pH / Fluid Loss	9.50 / 10.4		
Source of Sample	FLOWLINE		
Rim @ Meas. Temp	0.95 @ 86F		
Rmf @ Meas. Temp	0.71 @ 86F		
Rmc @ Meas. Temp	1.14 @ 86F		
Source of Rmf / Rmc	MEASURED		
Rim @ BHT	0.66 @ 123F		
Time Circulation Stopped	2 HOURS		
Time Logger on Bottom			
Maximum Recorded Temperature	123F		
Equipment Number	860		
Location	HAYS, KS.		
Recorded By	IAN MABB		
Witnessed By	MAX LOVELLY		

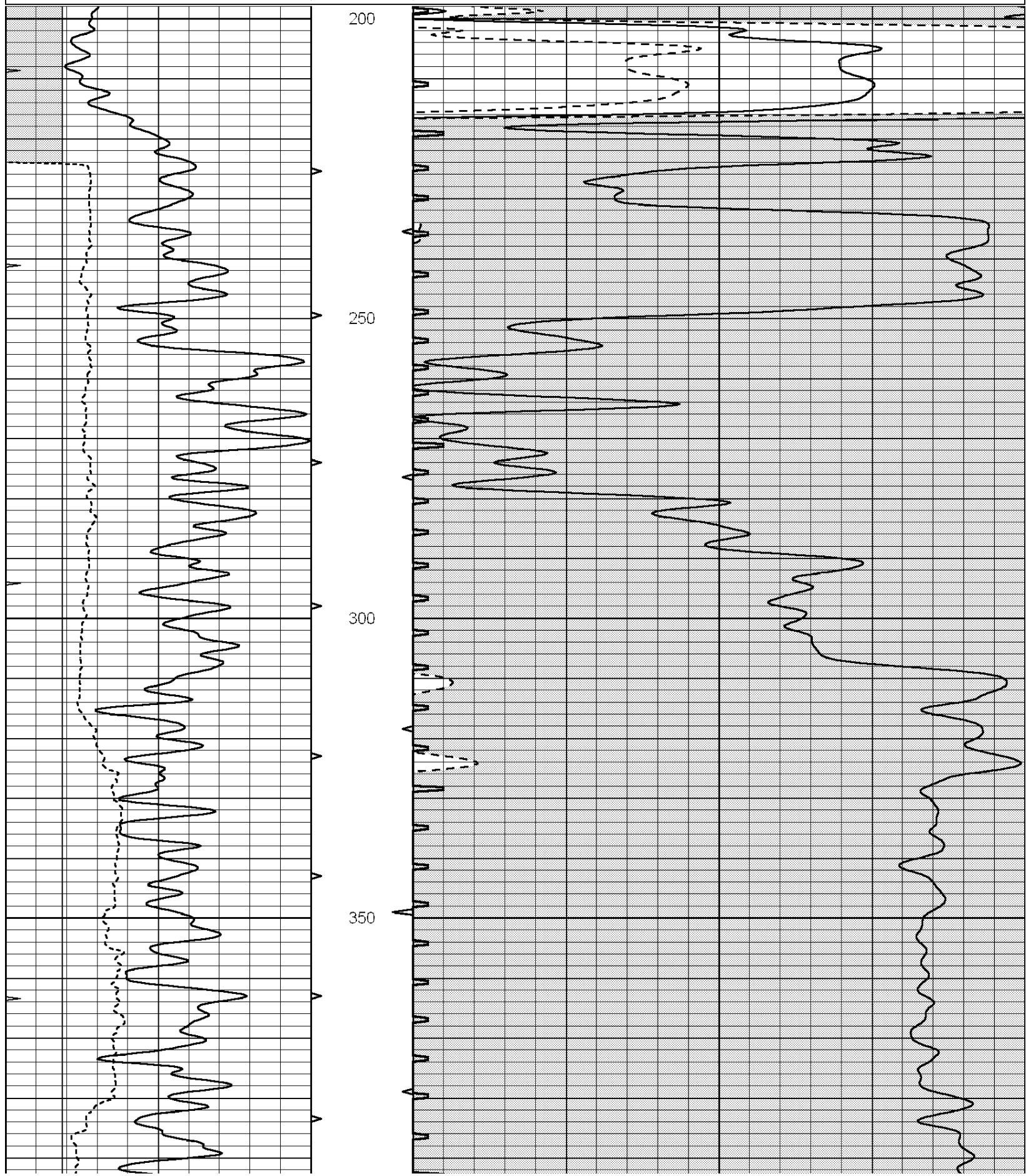
<<< Fold Here >>>

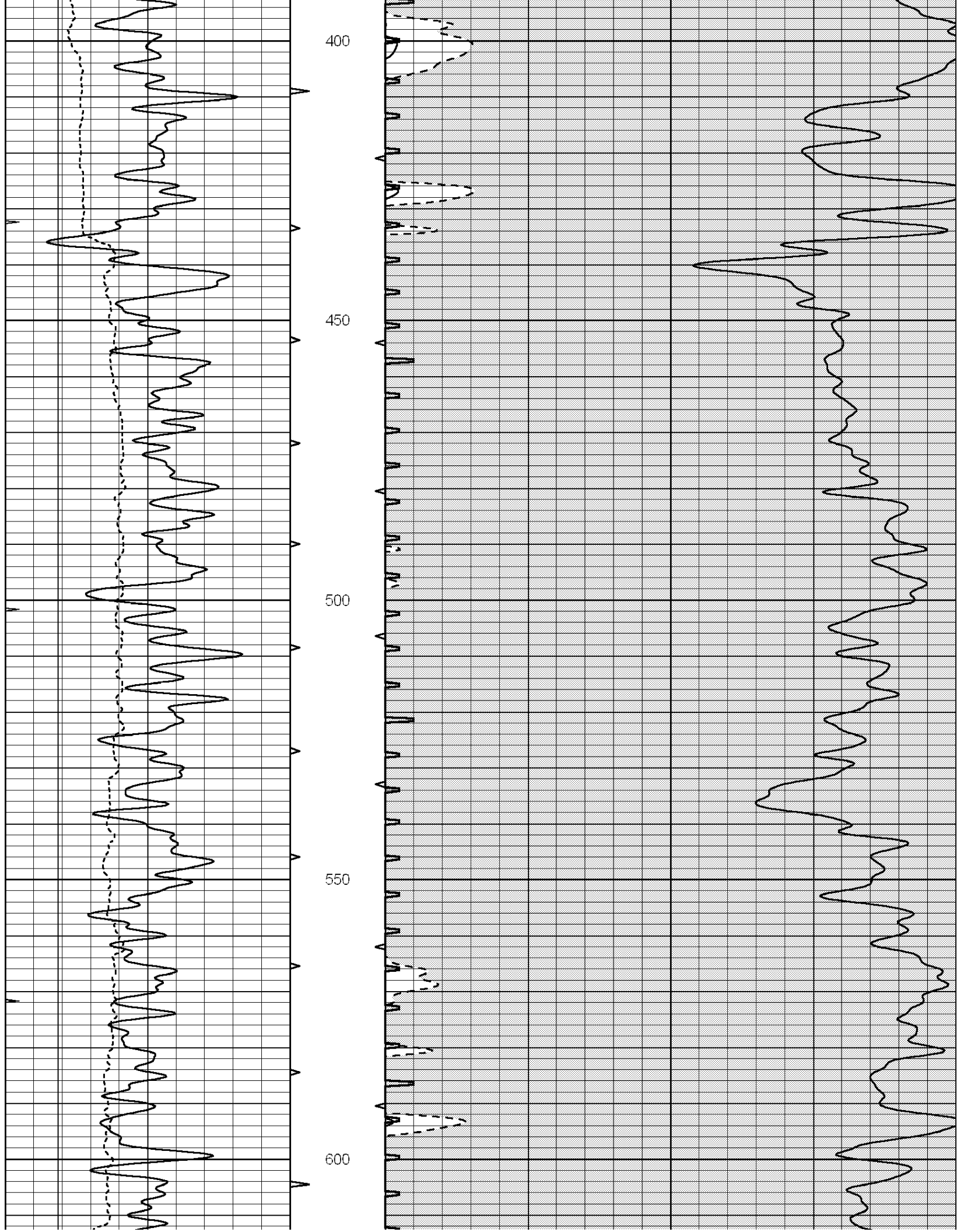
All interpretations are opinions based on inferences from electrical or other measurements and we cannot and do not guarantee the accuracy or correctness of any interpretation, and we shall not, except in the case of gross or willful negligence on our part, be liable or responsible for any loss, costs, damages, or expenses incurred or sustained by anyone resulting from any interpretation made by any of our officers, agents or employees. These interpretations are also subject to our general terms and conditions set out in our current Price Schedule.

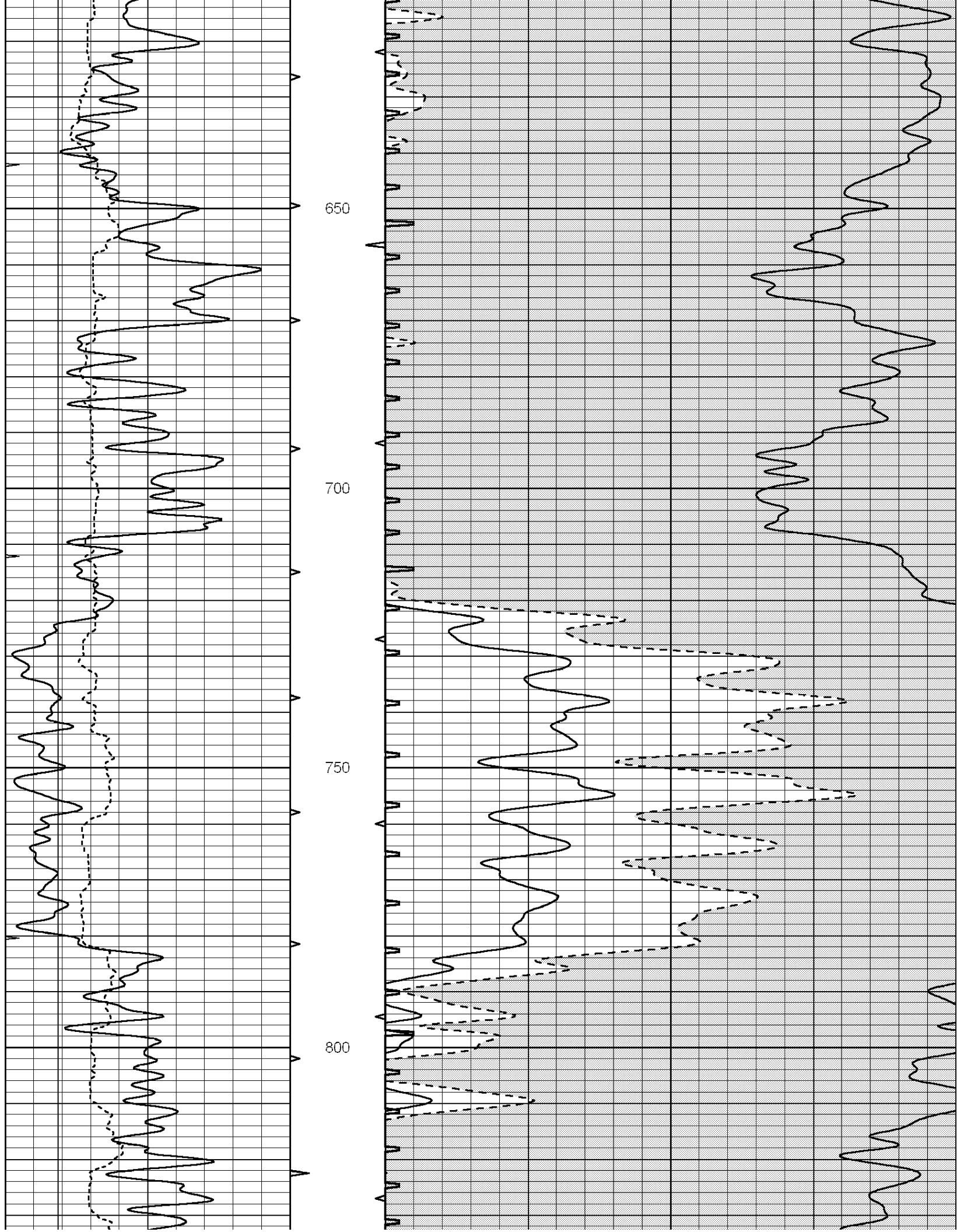
Comments

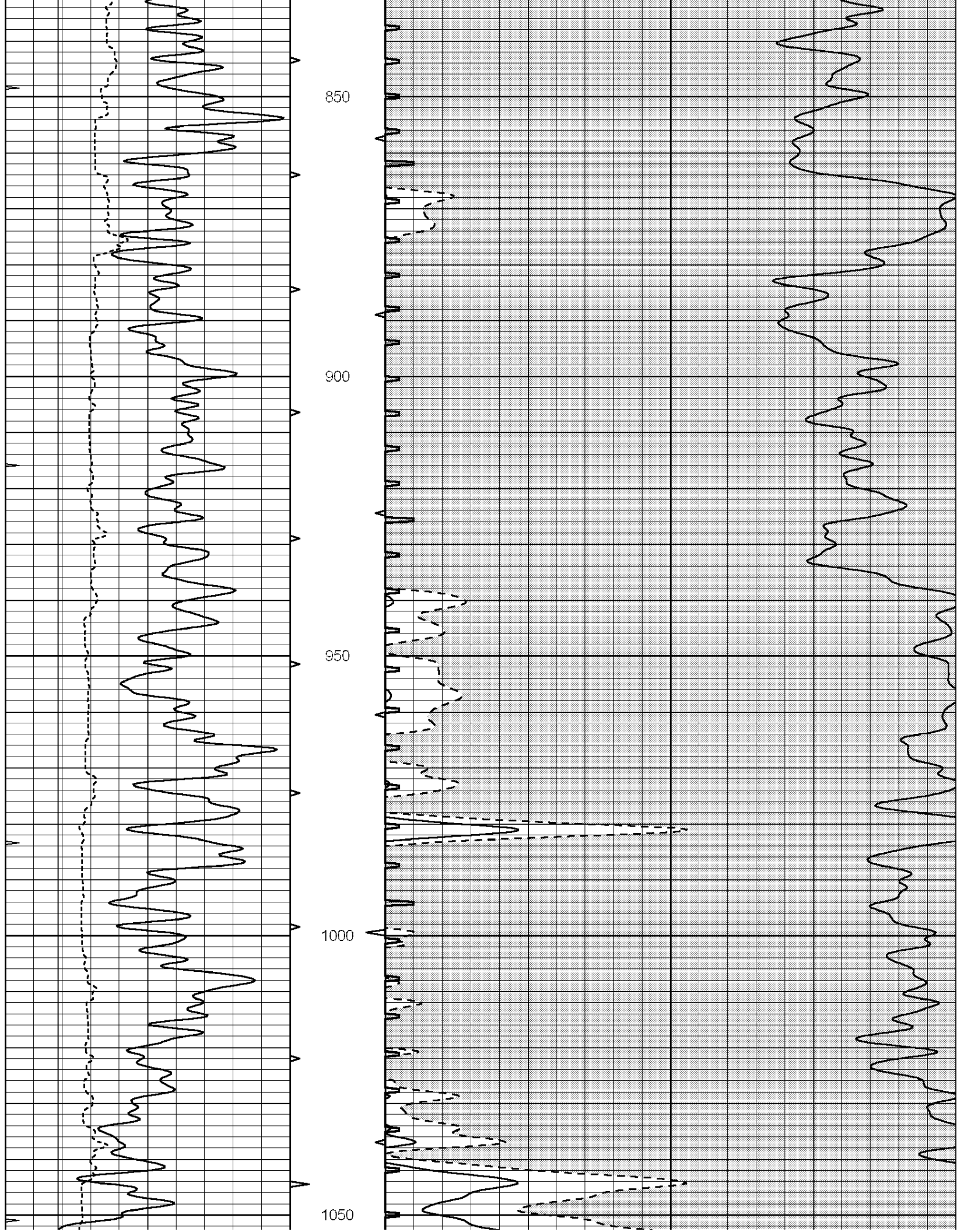
NABORS COMPLETION & PRODUCTION SERVICES
785-628-6395
THANK YOU FOR YOUR BUSINESS
DIRECTIONS: OAKLEY, KS. - 11 MILES SOUTH TO GOVE RD. - EAST TO RD. 16 - 4 MILES SOUTH TO RD. 0
- 1/2 EAST - NORTH INTO

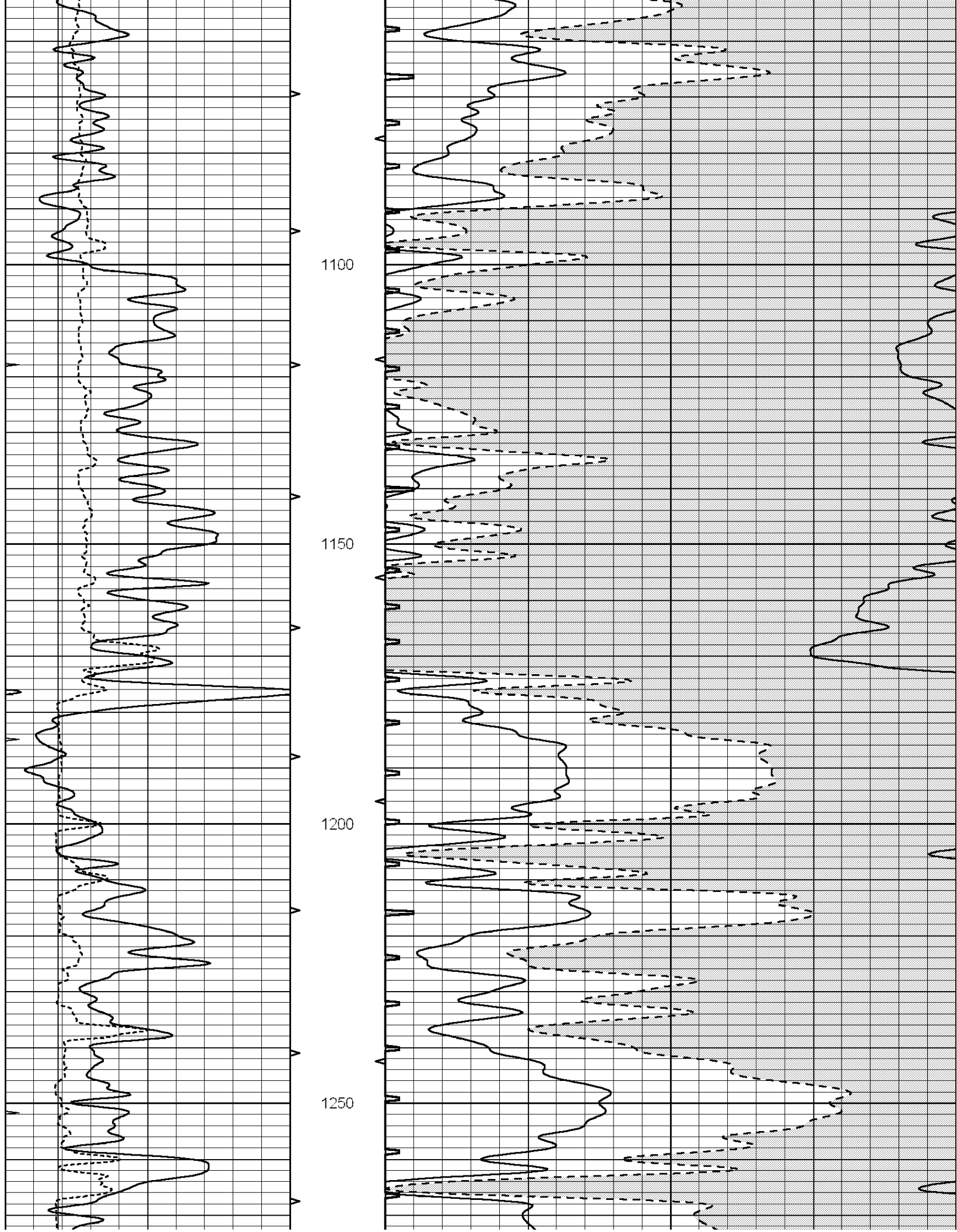
0	GAMMA RAY (GAPI)	150	ABHV	140	DELTA TIME (usec/ft)	40
6	MELCAL (in)	16	10 (ft3)	0 30	SONIC POROSITY (pu)	-10
0	MINMK	20	TBHV	0	ITT (msec)	20
			0 (ft3)	10		

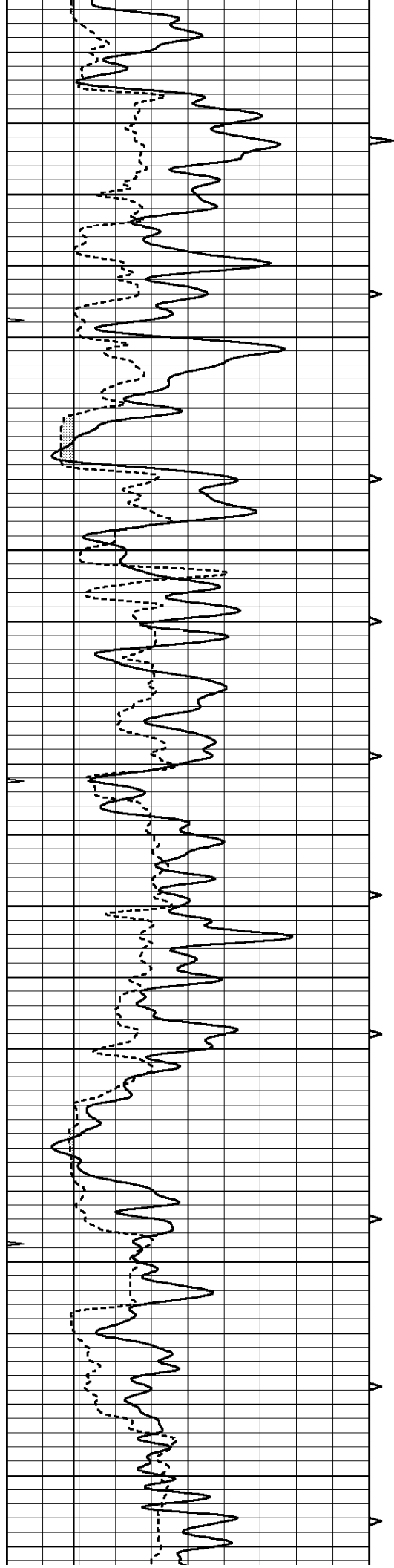










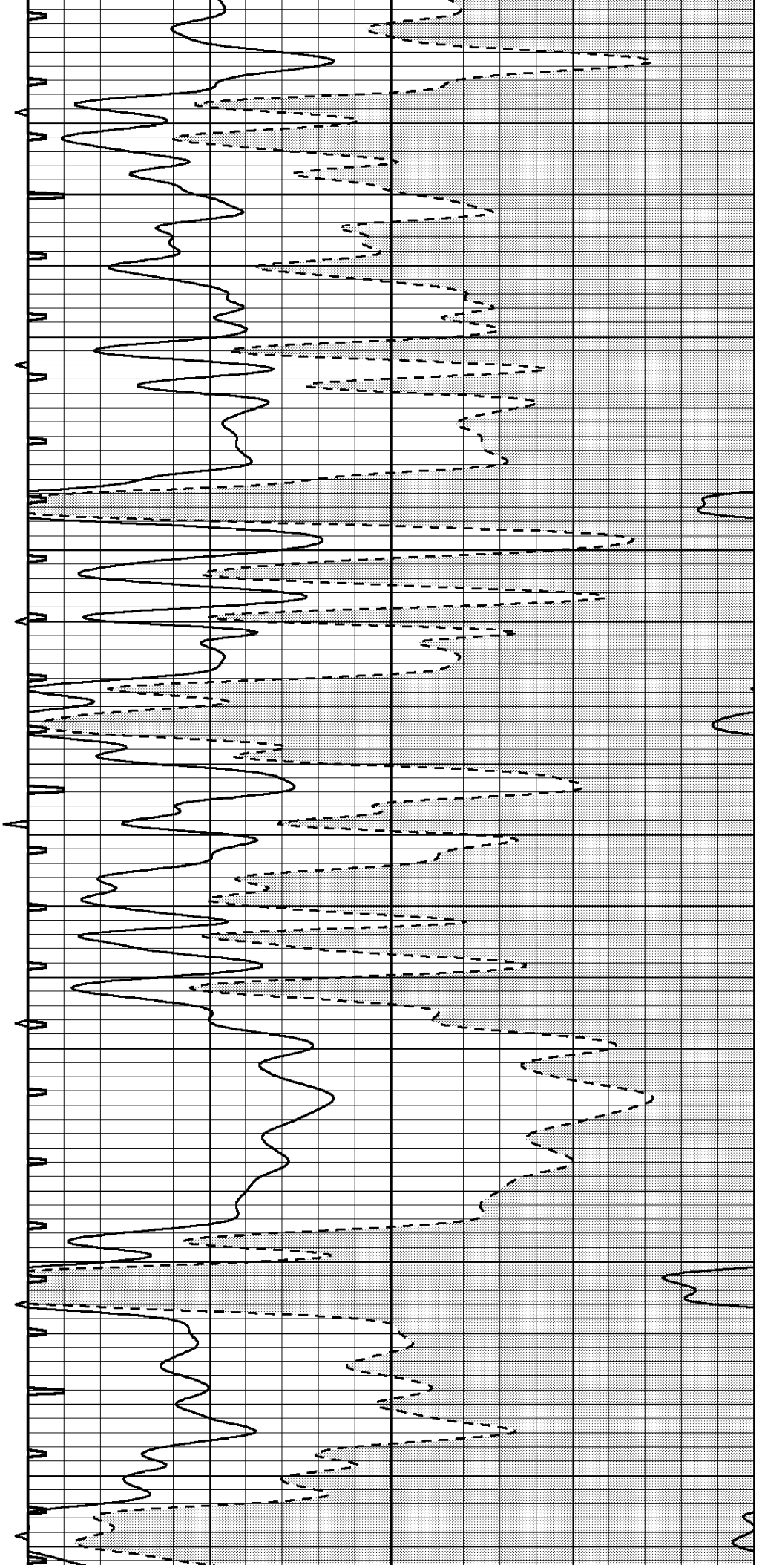


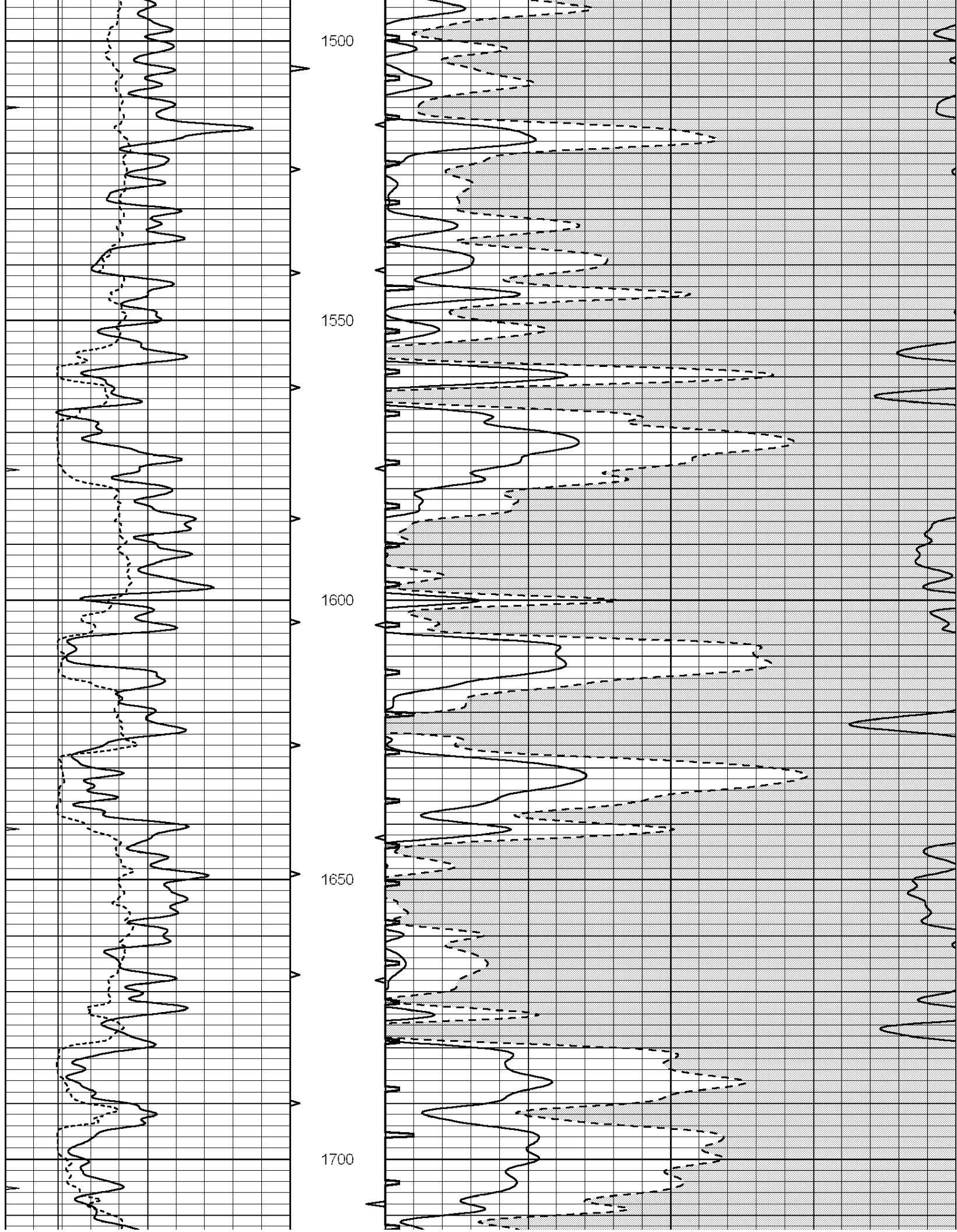
1300

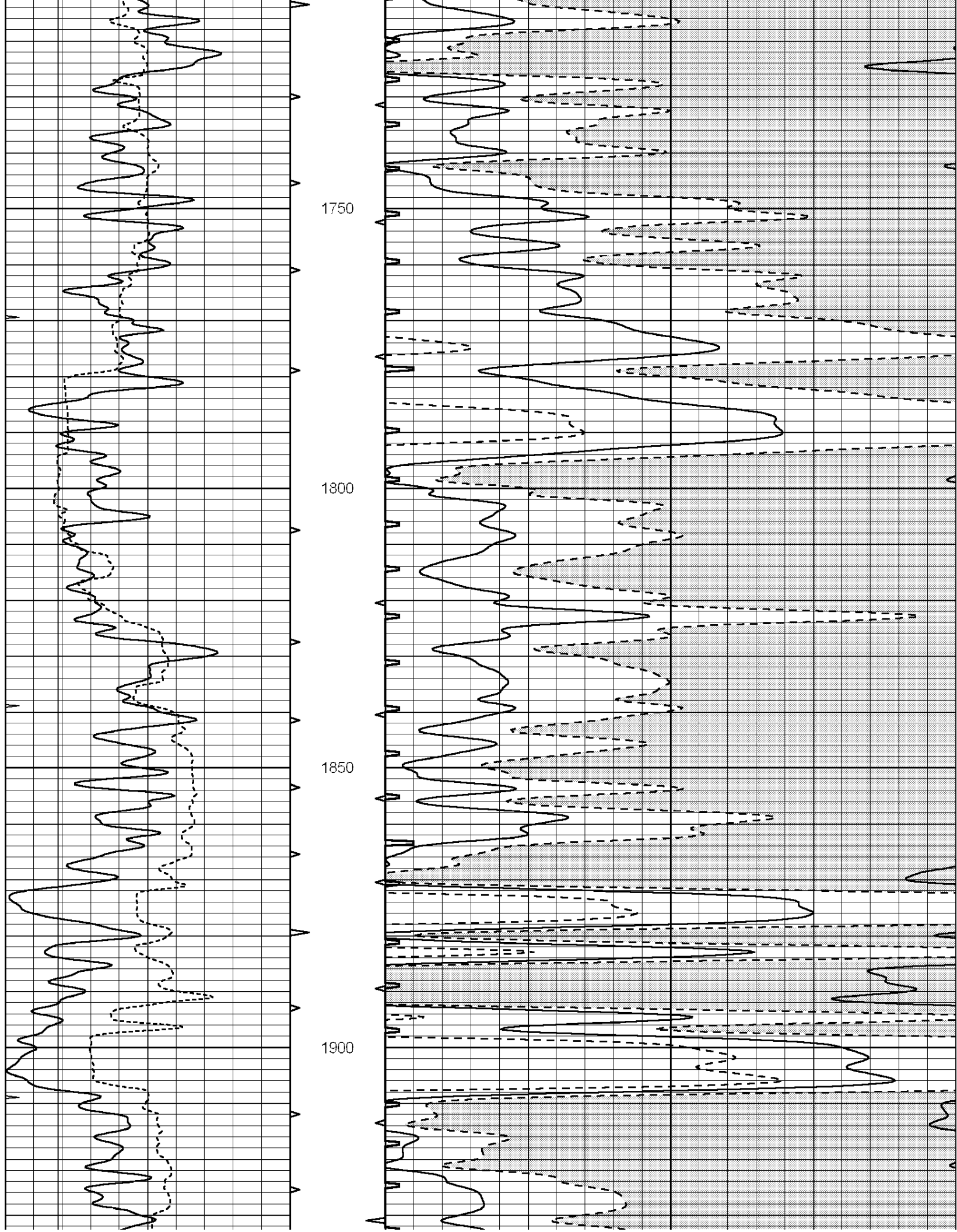
1350

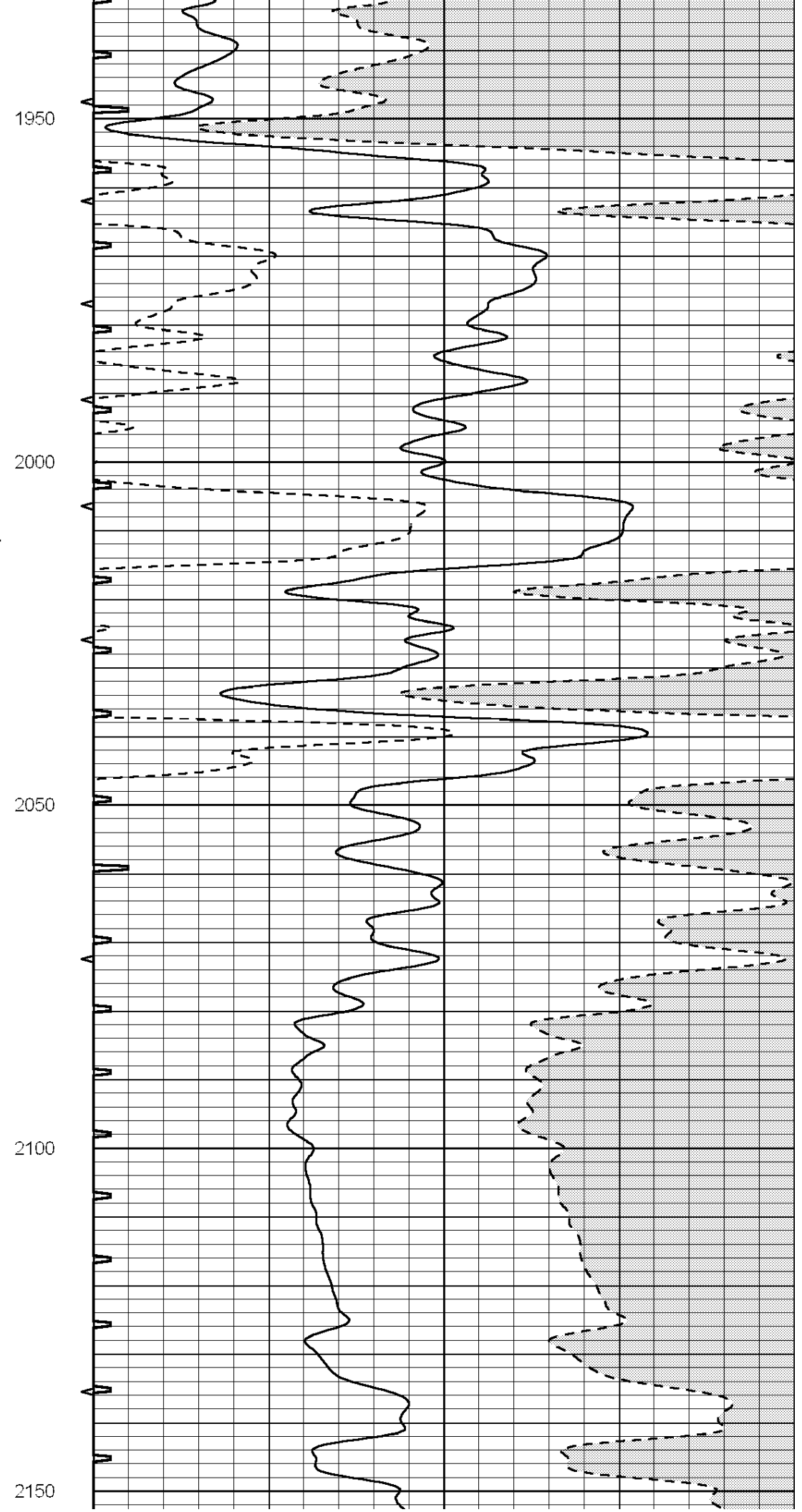
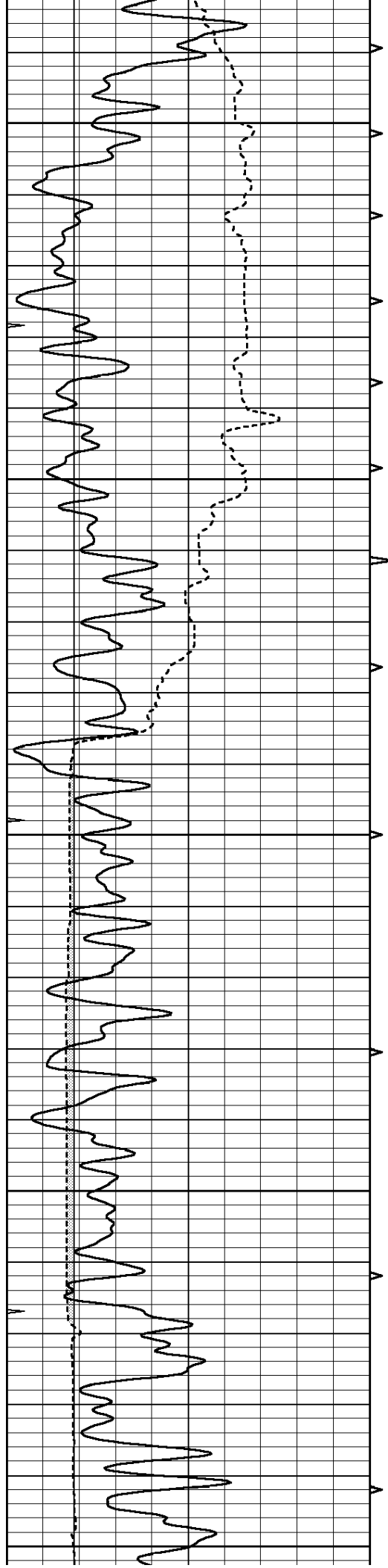
1400

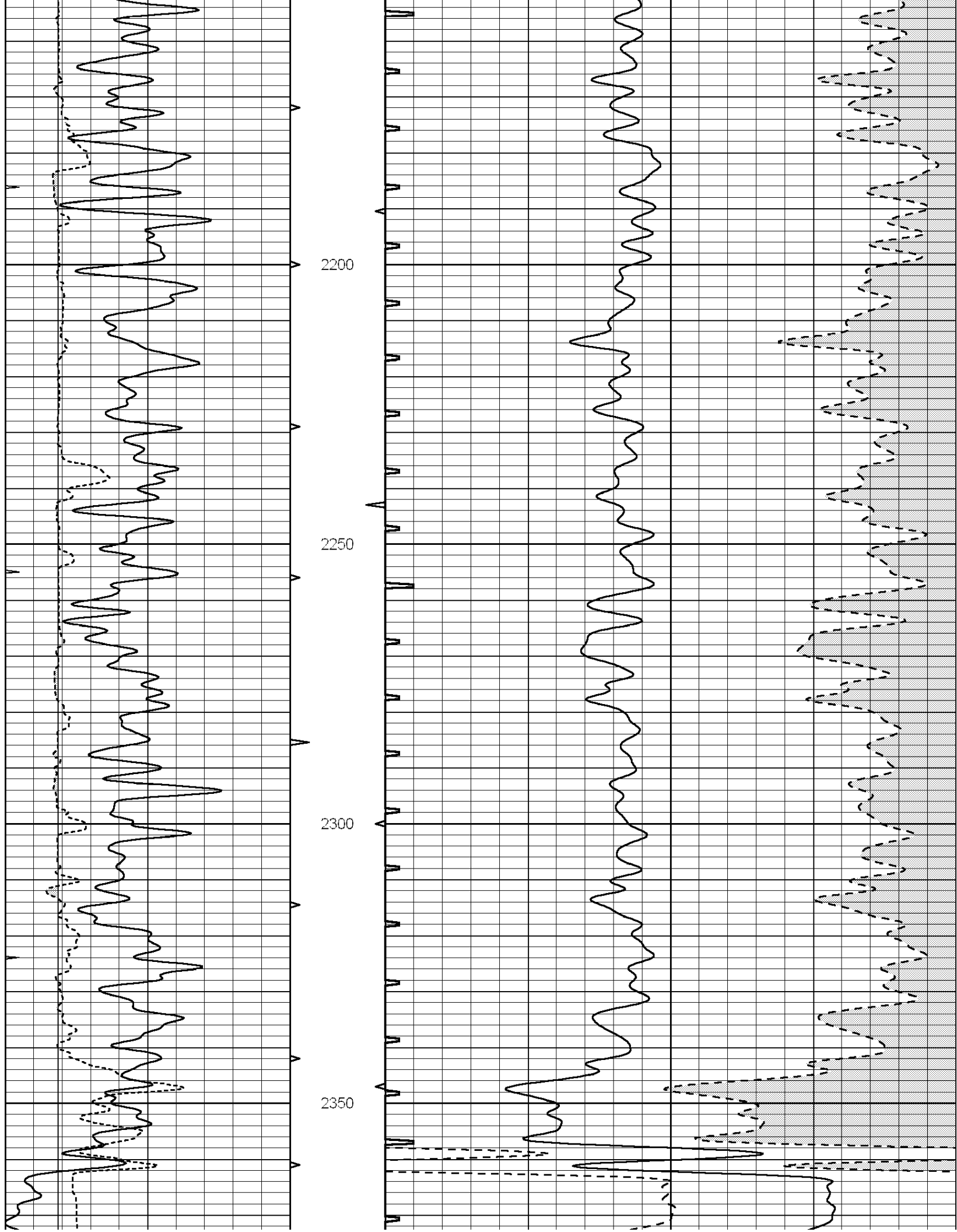
1450

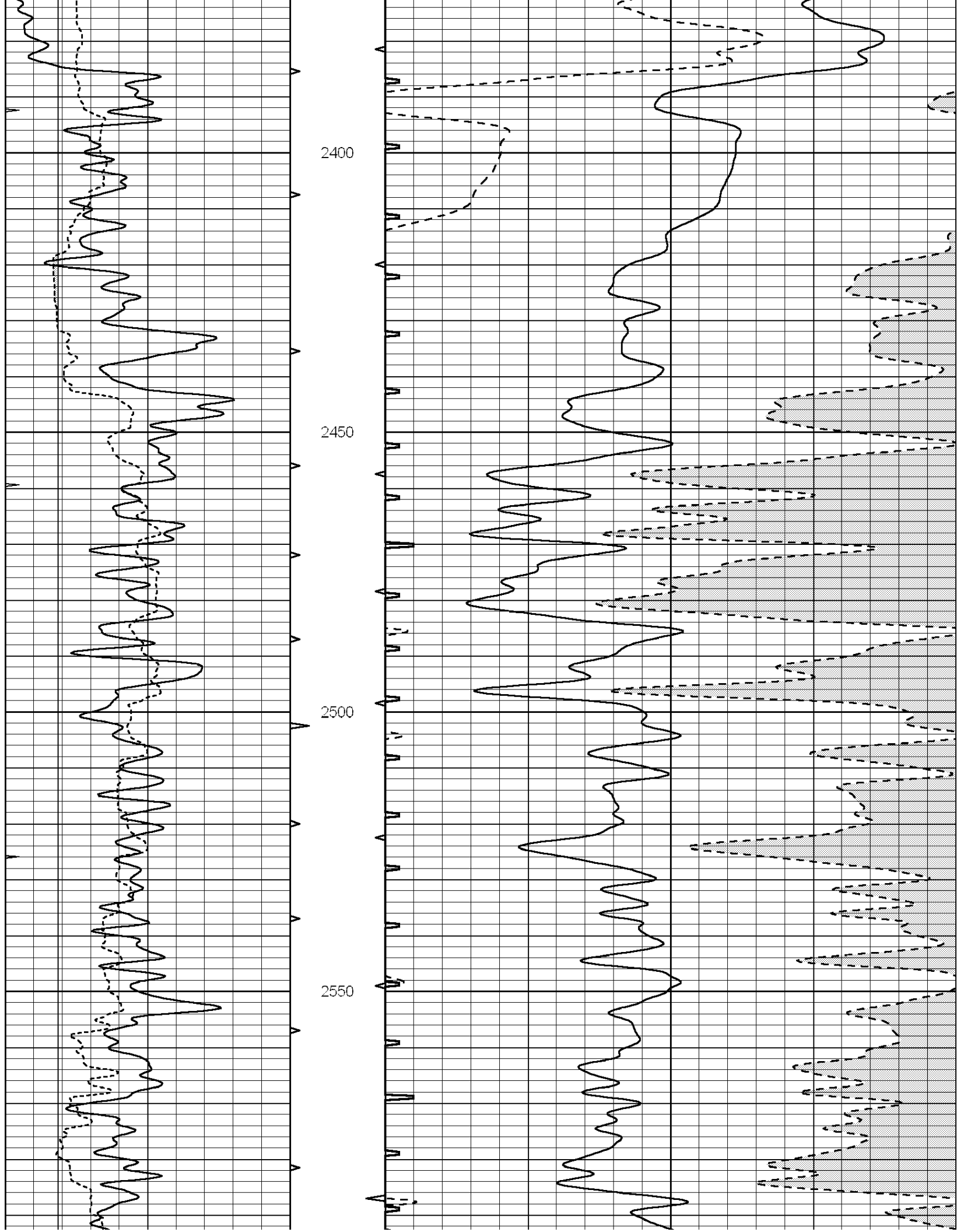


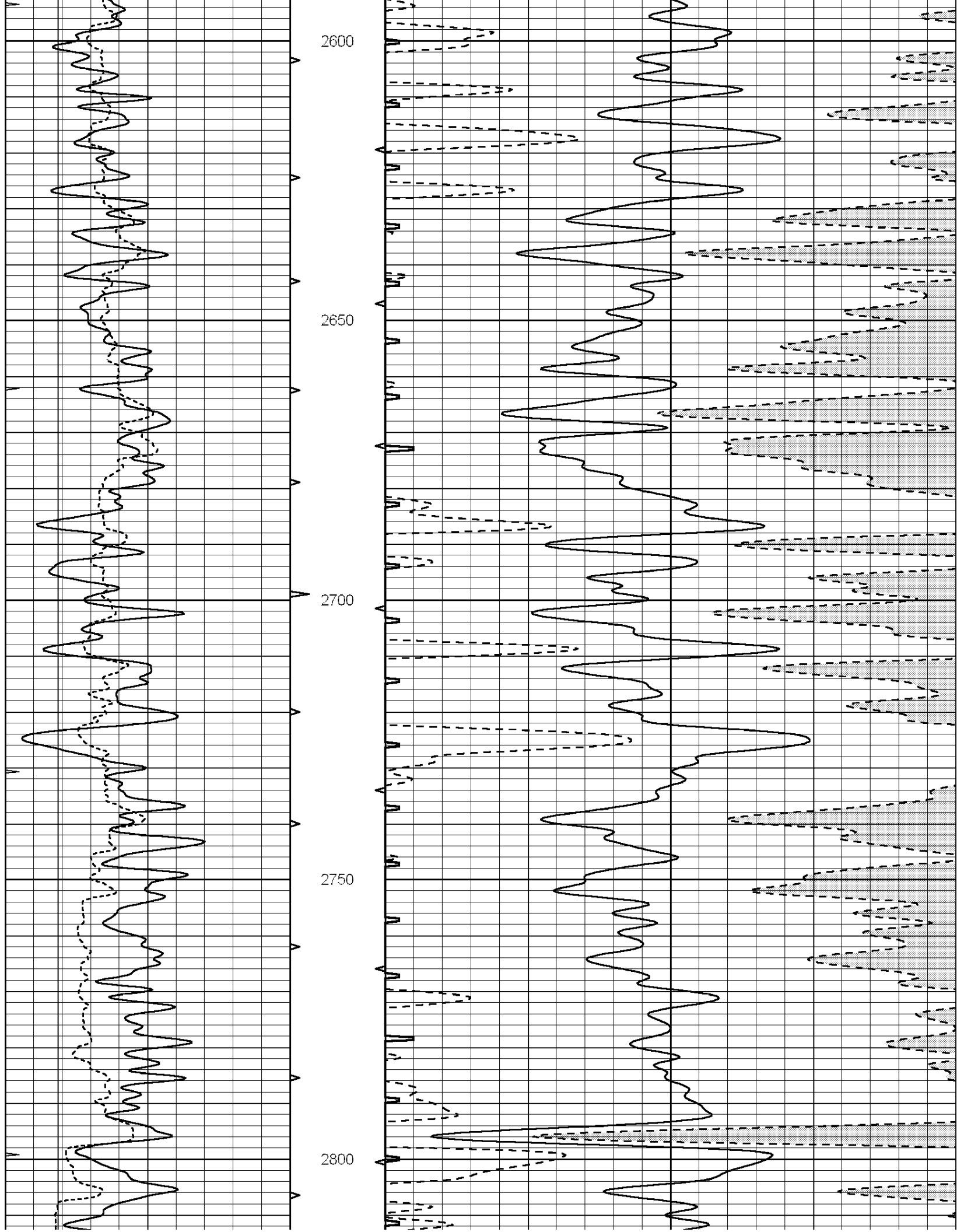


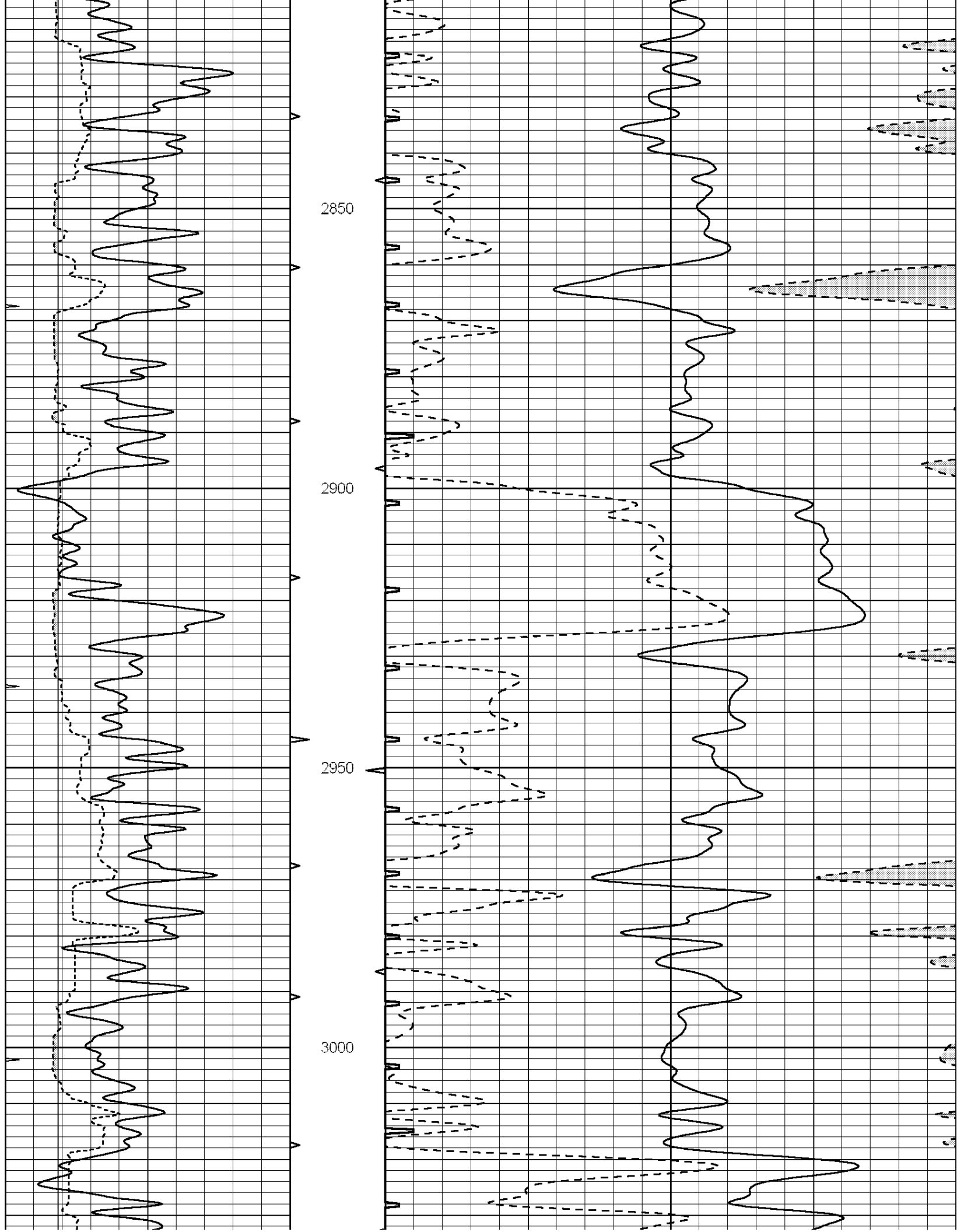


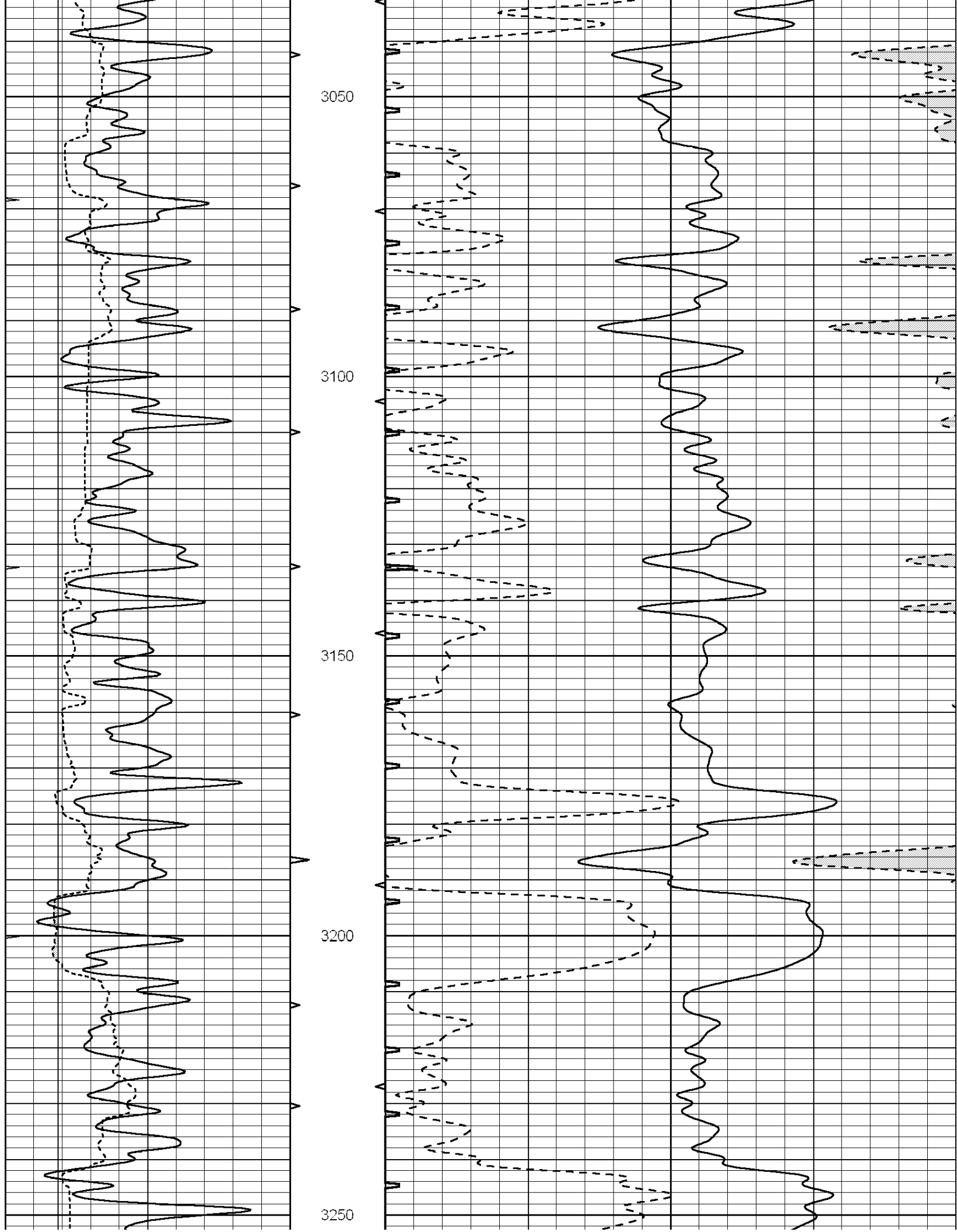


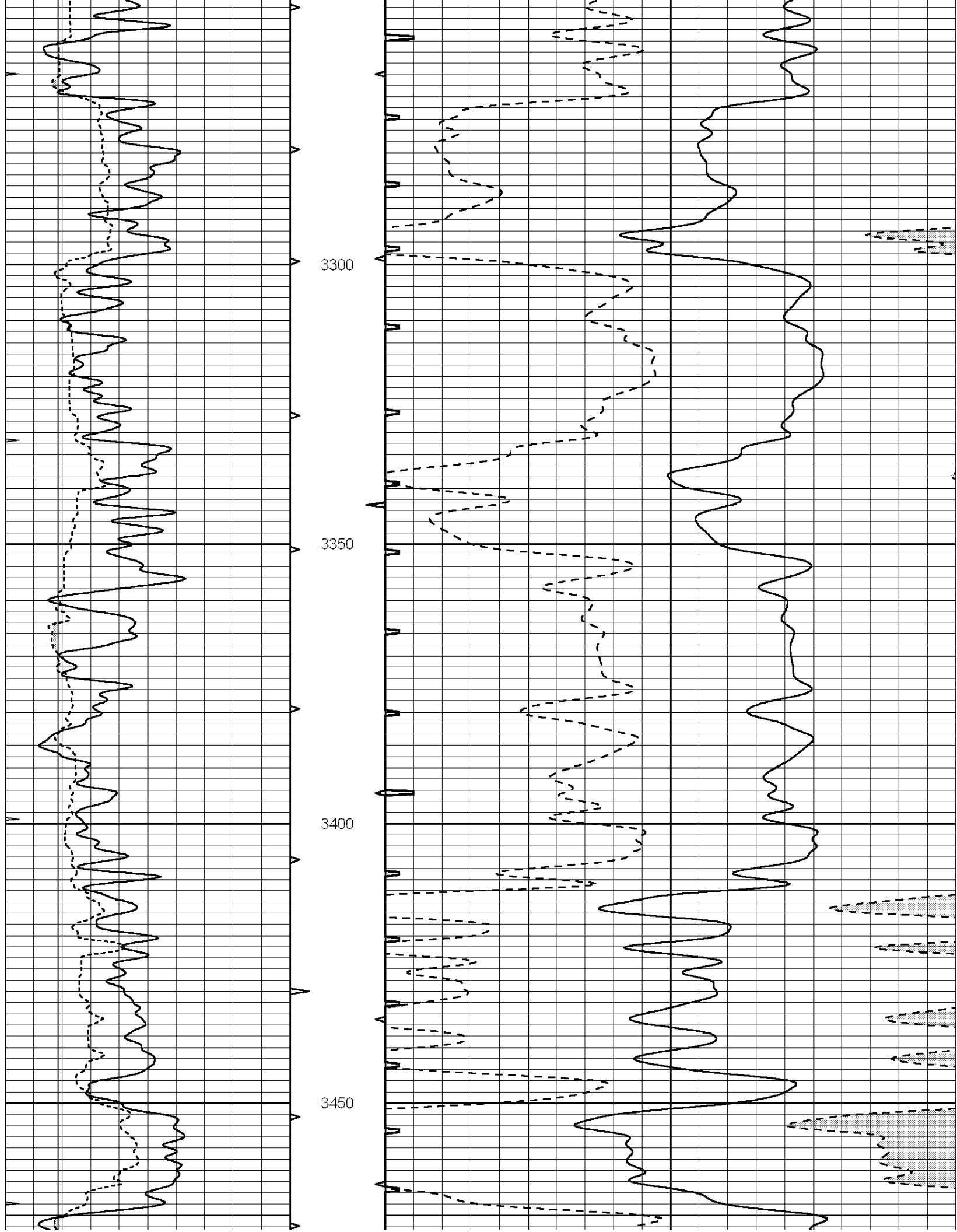


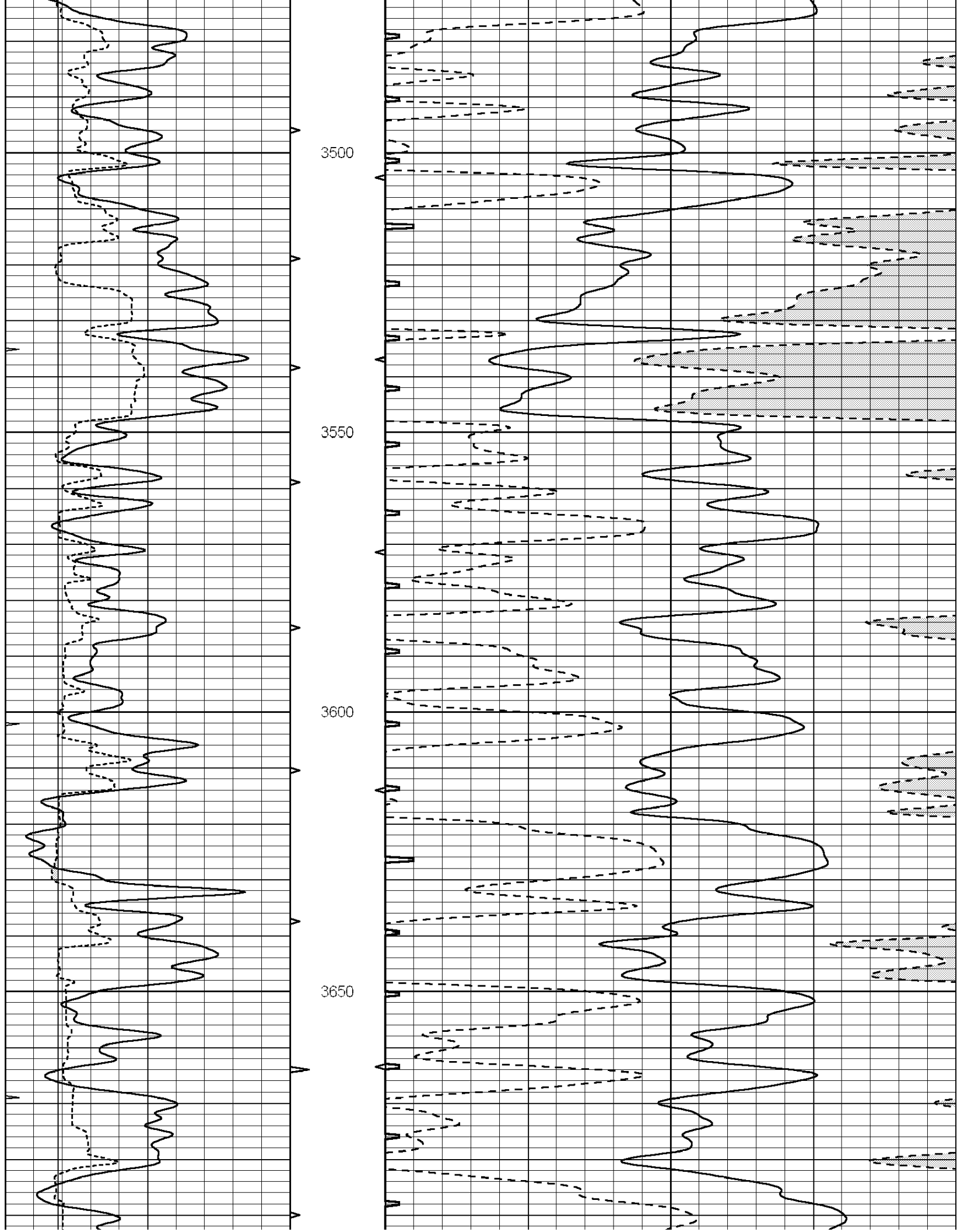


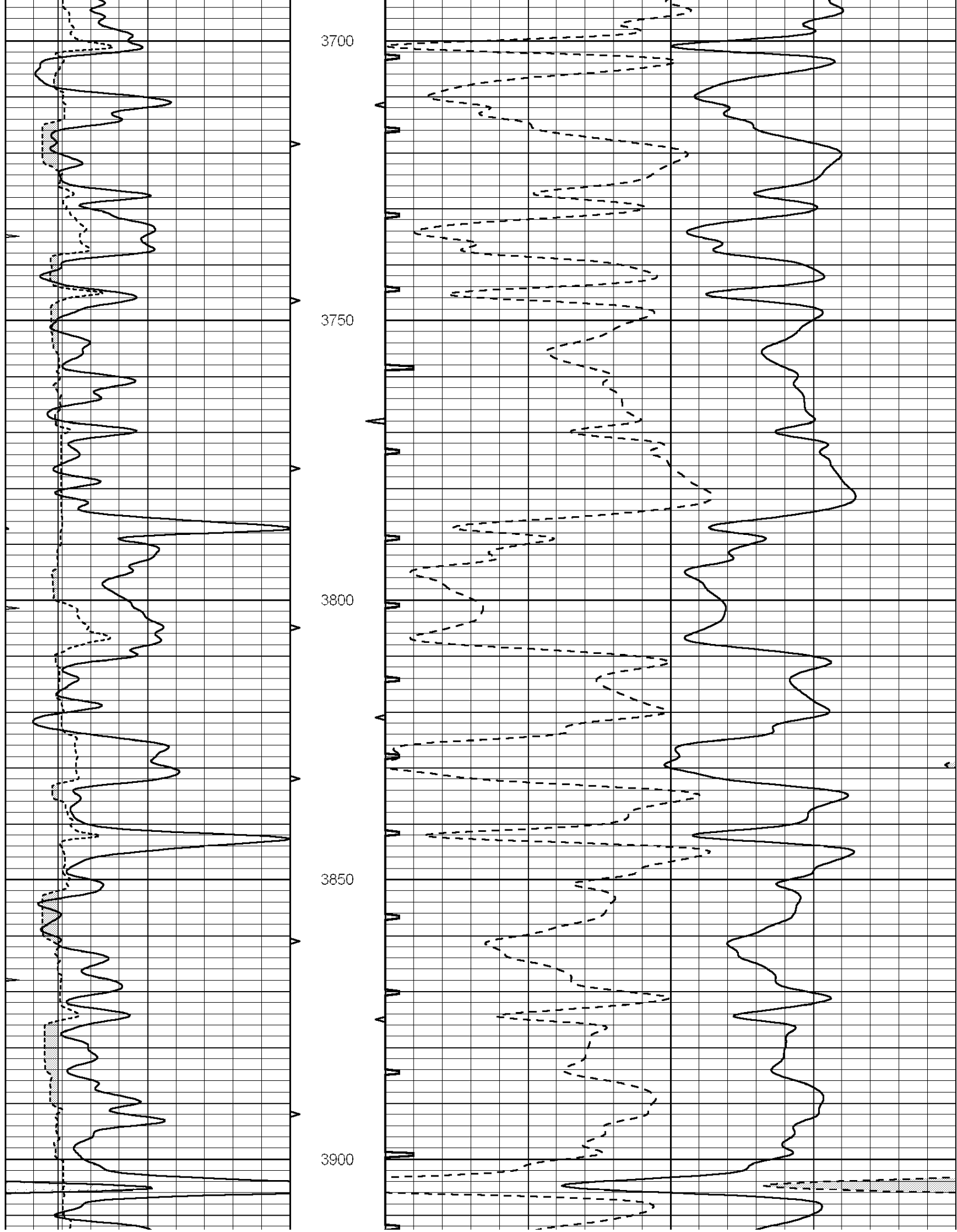


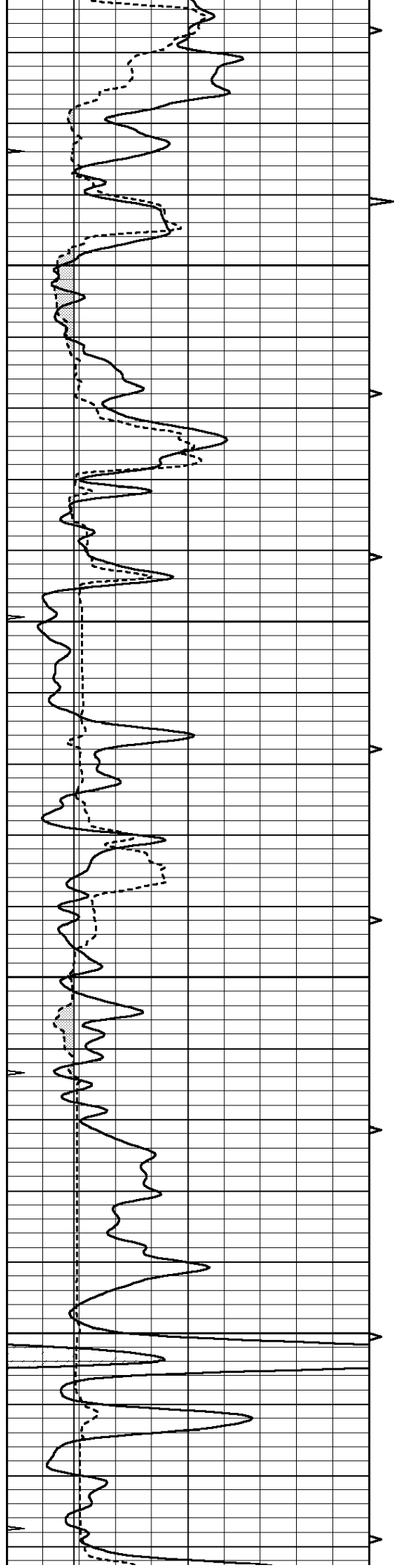










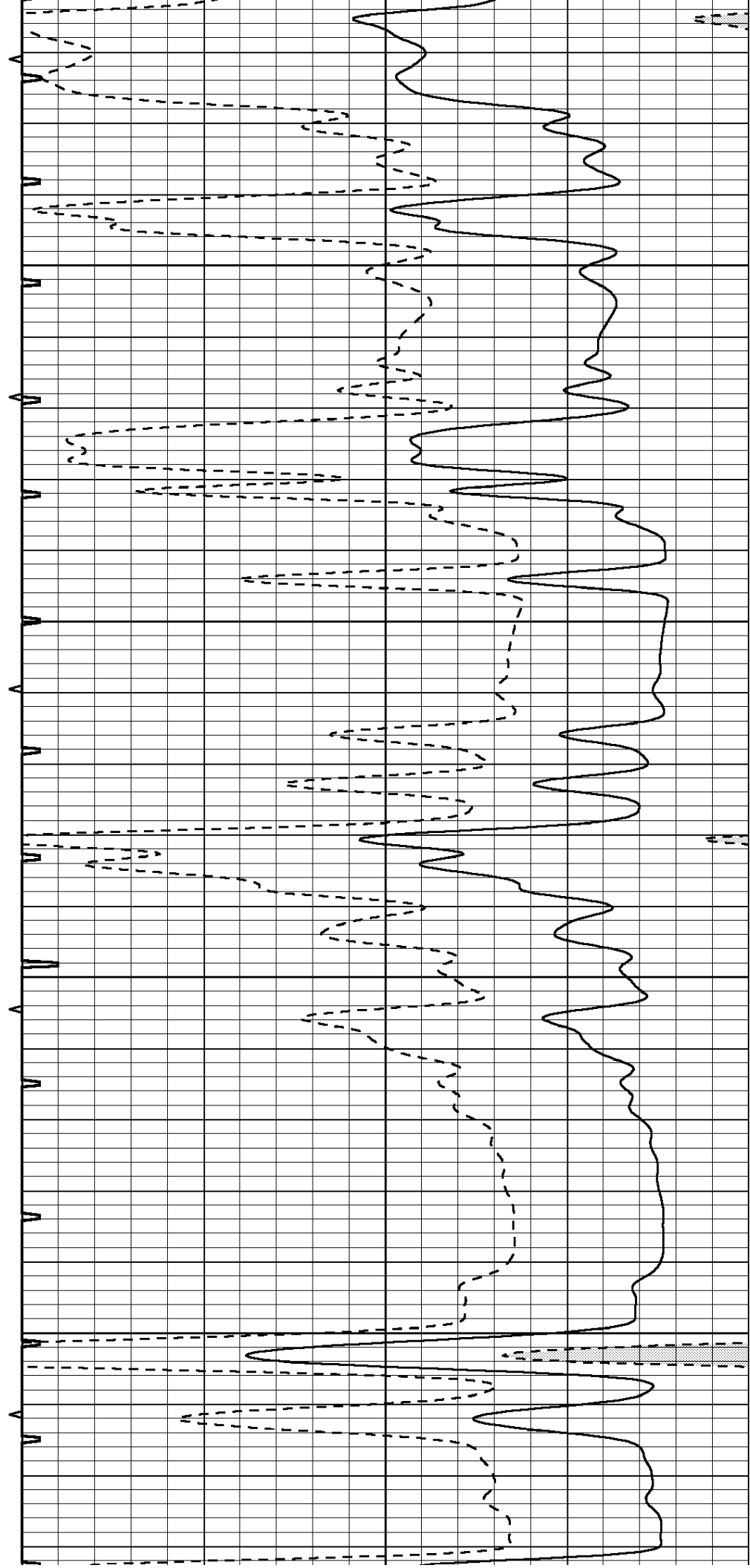


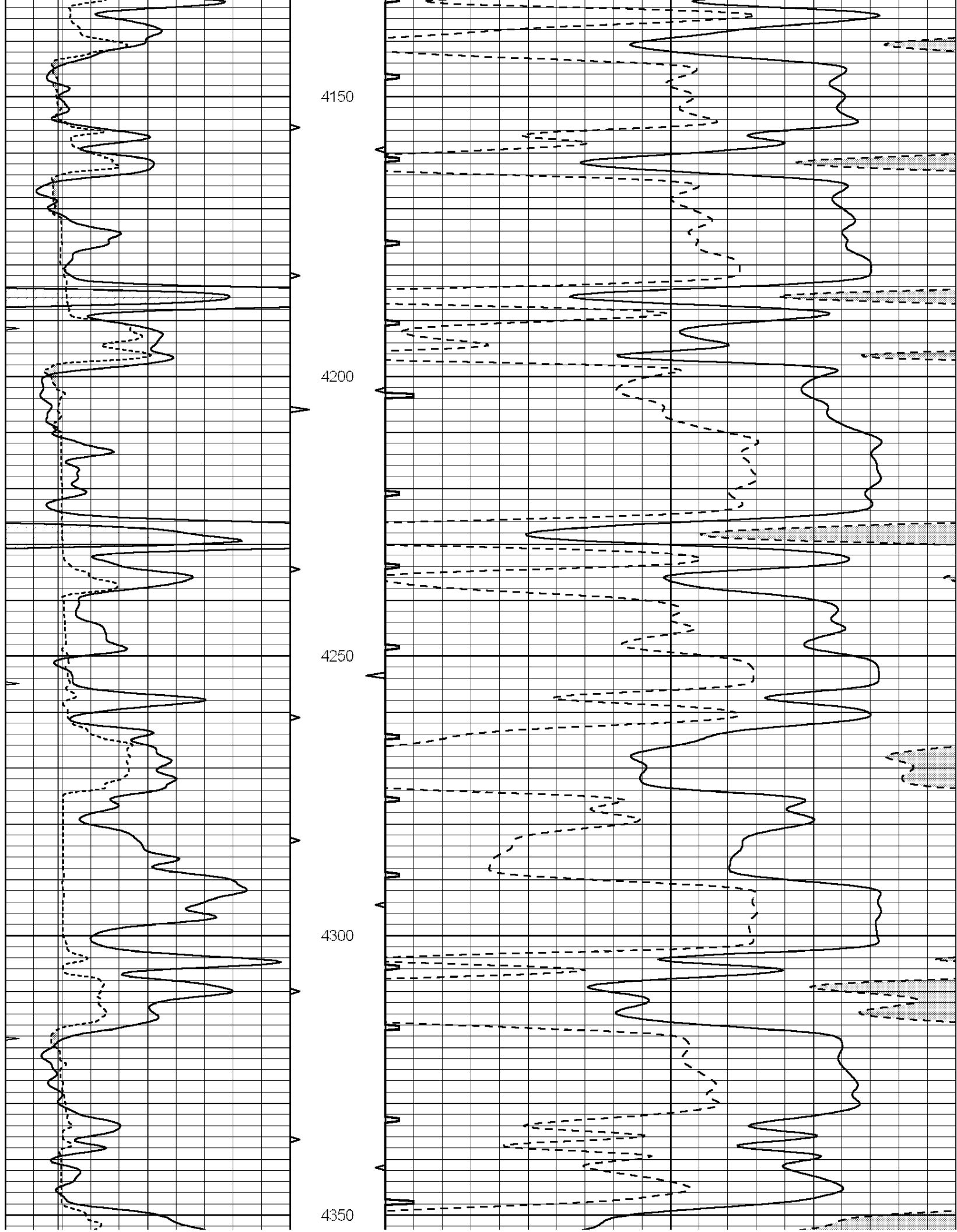
3950

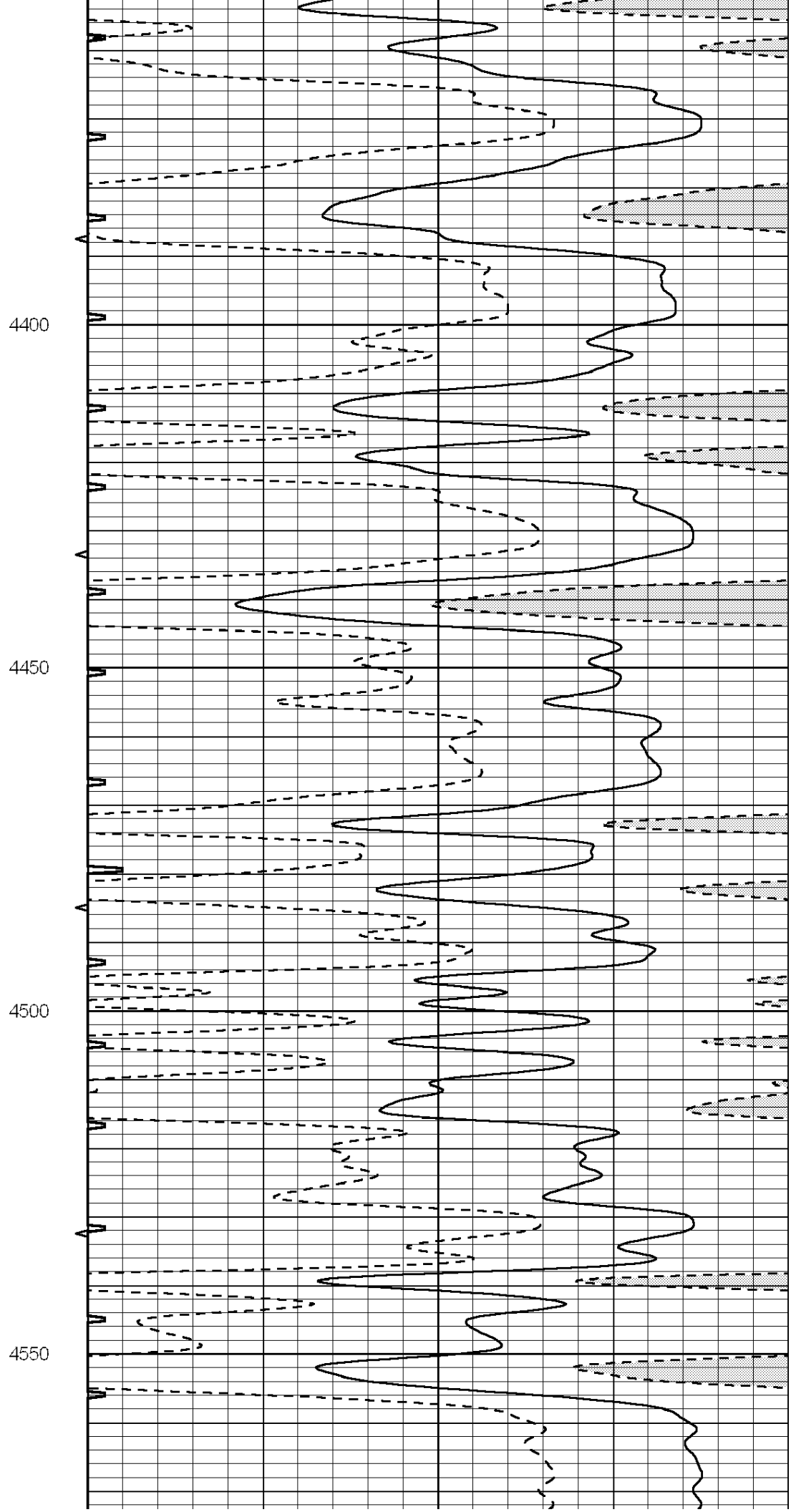
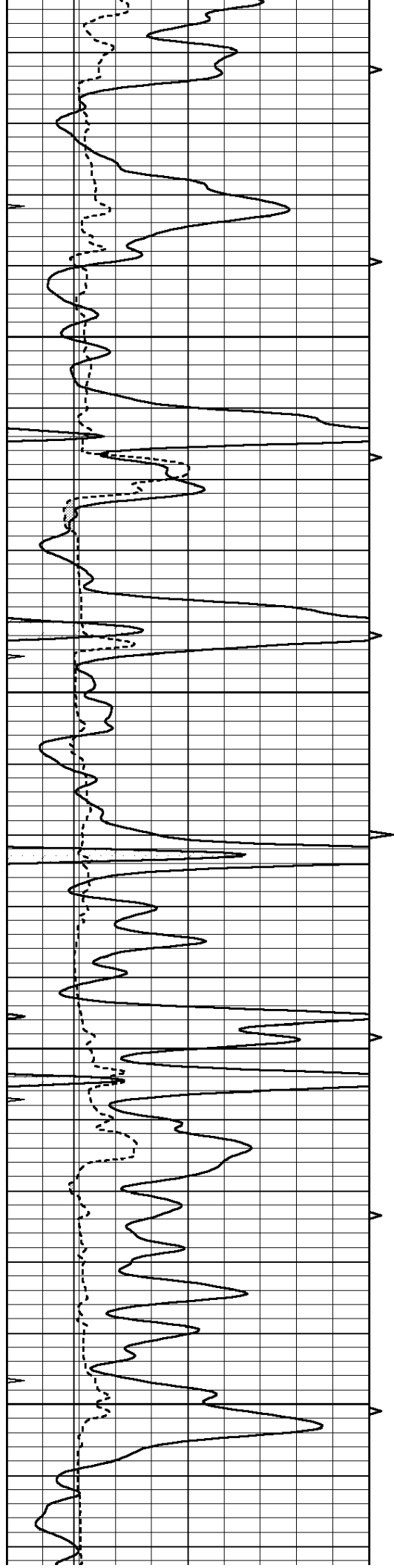
4000

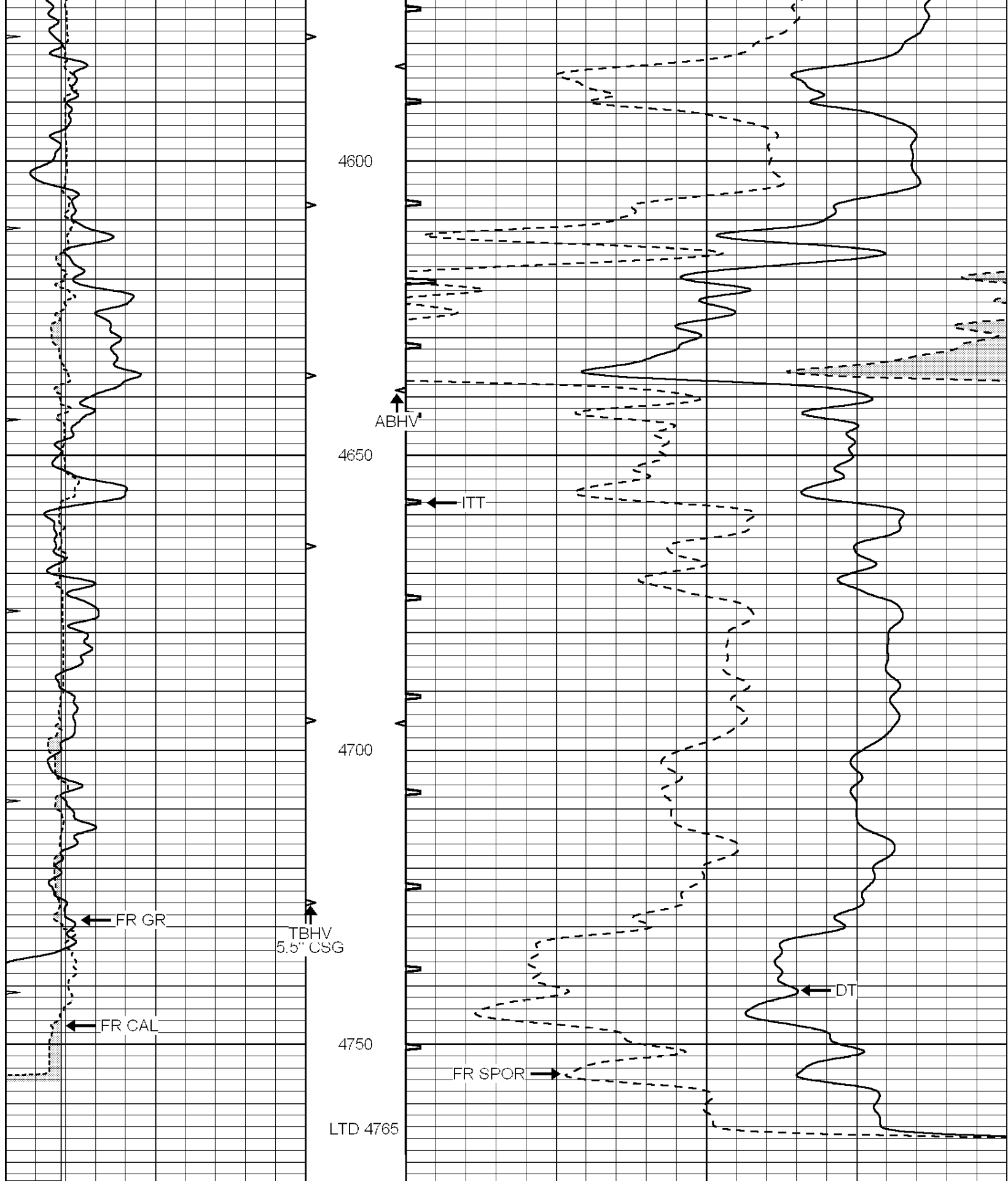
4050

4100









0	GAMMA RAY (GAPI)	150	ABHV	140	DELTA TIME (usec/ft)	40
6	MELCAL (in)	16	10 (ft3)	0 30	SONIC POROSITY (pu)	-10
0	MINMK	20	TBHV	0	ITT (msec)	20
			0 (ft3)	10		

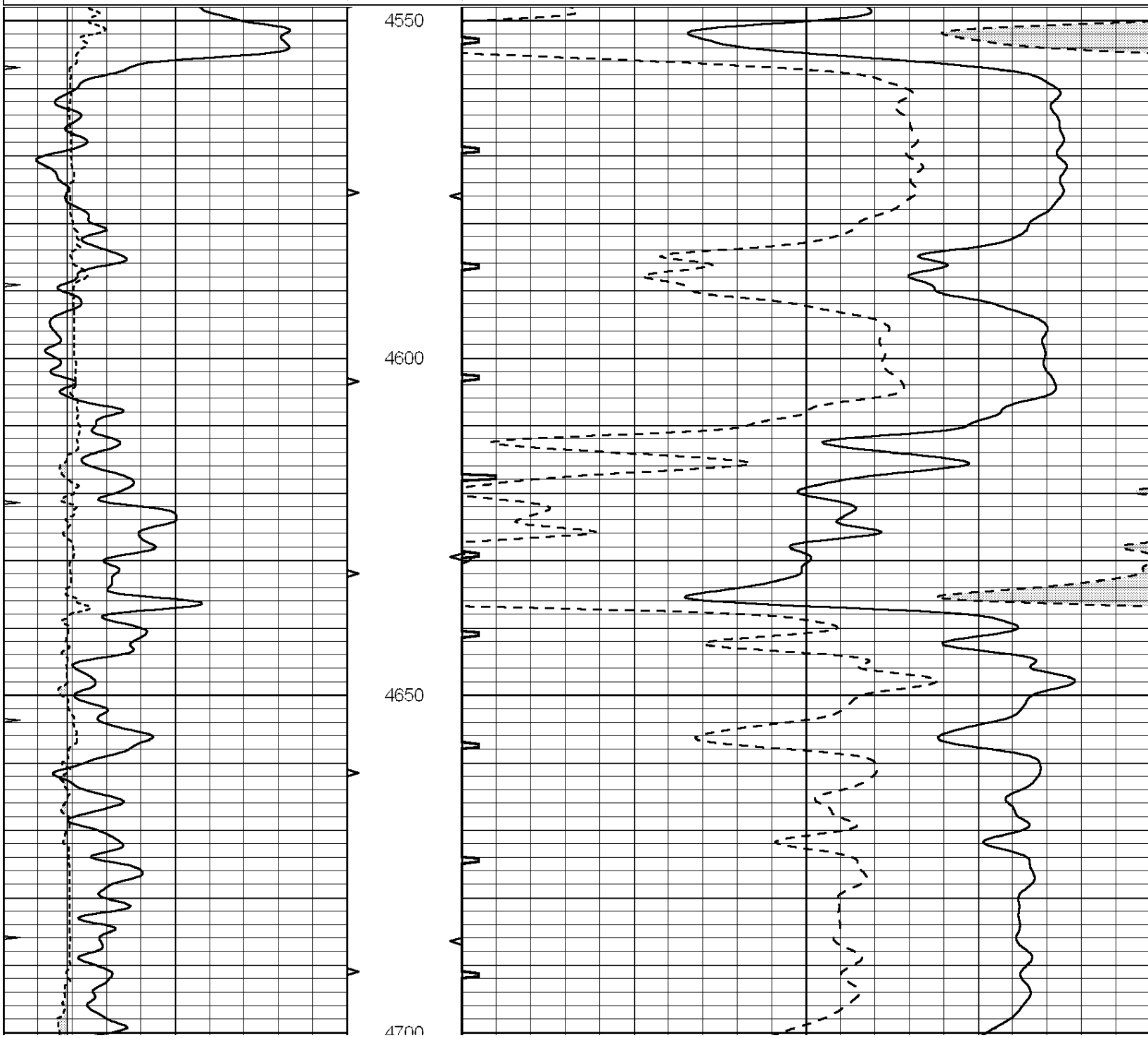


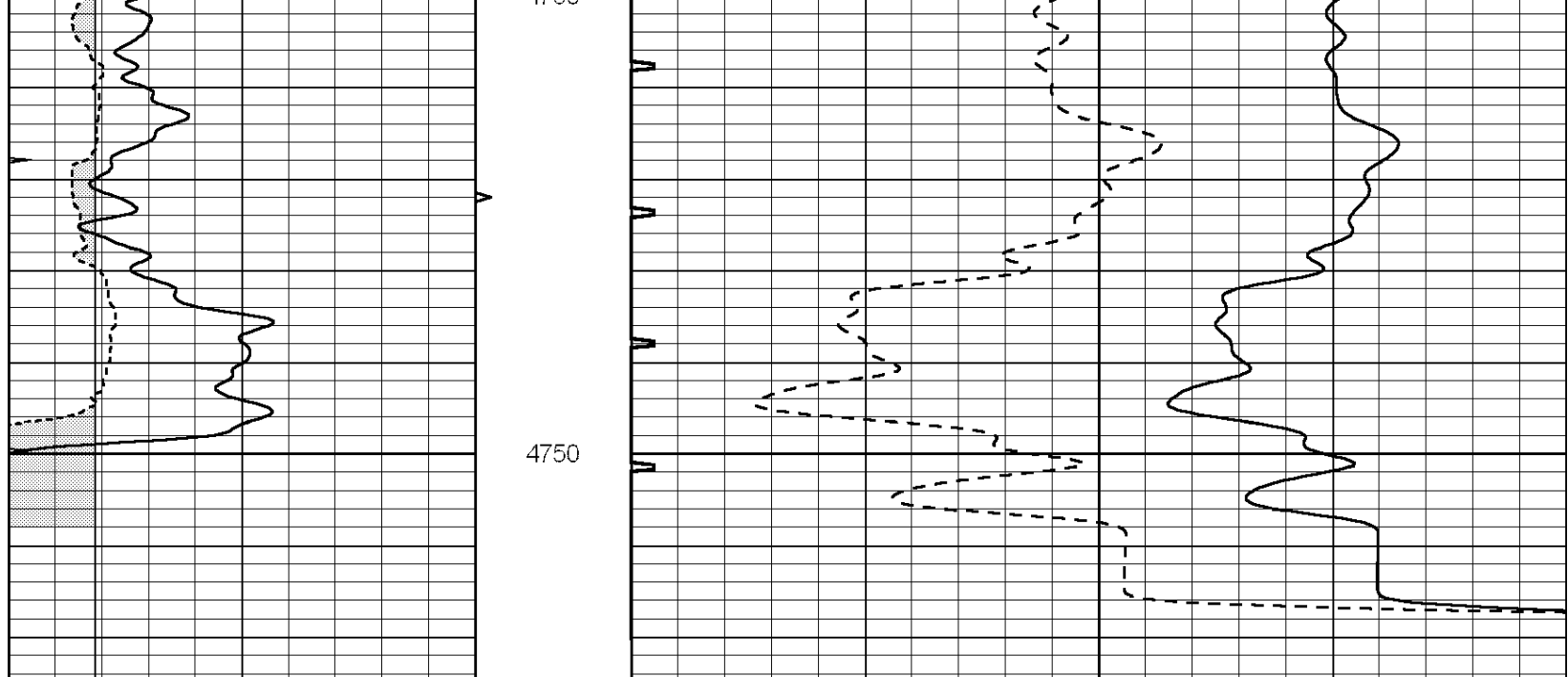
**COMPLETION
& PRODUCTION
SERVICES CO.**

REPEAT SECTION

Database File: 010998ddn.db
 Dataset Pathname: pass5.1
 Presentation Format: _slt
 Dataset Creation: Tue May 07 15:39:15 2013 by Calc Open-Cased 090629
 Charted by: Depth in Feet scaled 1:240

0	GAMMA RAY (GAPI)	150	ABHV	140	DELTA TIME (usec/ft)	40
6	MELCAL (in)	16	10 (ft3)	0 30	SONIC POROSITY (pu)	-10
0	MINMK	20	TBHV	0	ITT (msec)	20
			0 (ft3)	10		





0	GAMMA RAY (GAPI)	150	ABHV	140	DELTA TIME (usec/ft)	40
6	MELCAL (in)	16	10 (ft3) 0	30	SONIC POROSITY (pu)	-10
0	MINMK	20	TBHV	0	ITT (msec)	20
			0 (ft3) 10			