




**REMARKS**

LOGGED WITH 0 PSI AT SURFACE

DEPTH SCALE: 5":100'

PROCESSED VERSION: 2012.07.18.162"

**MAIN PASS**

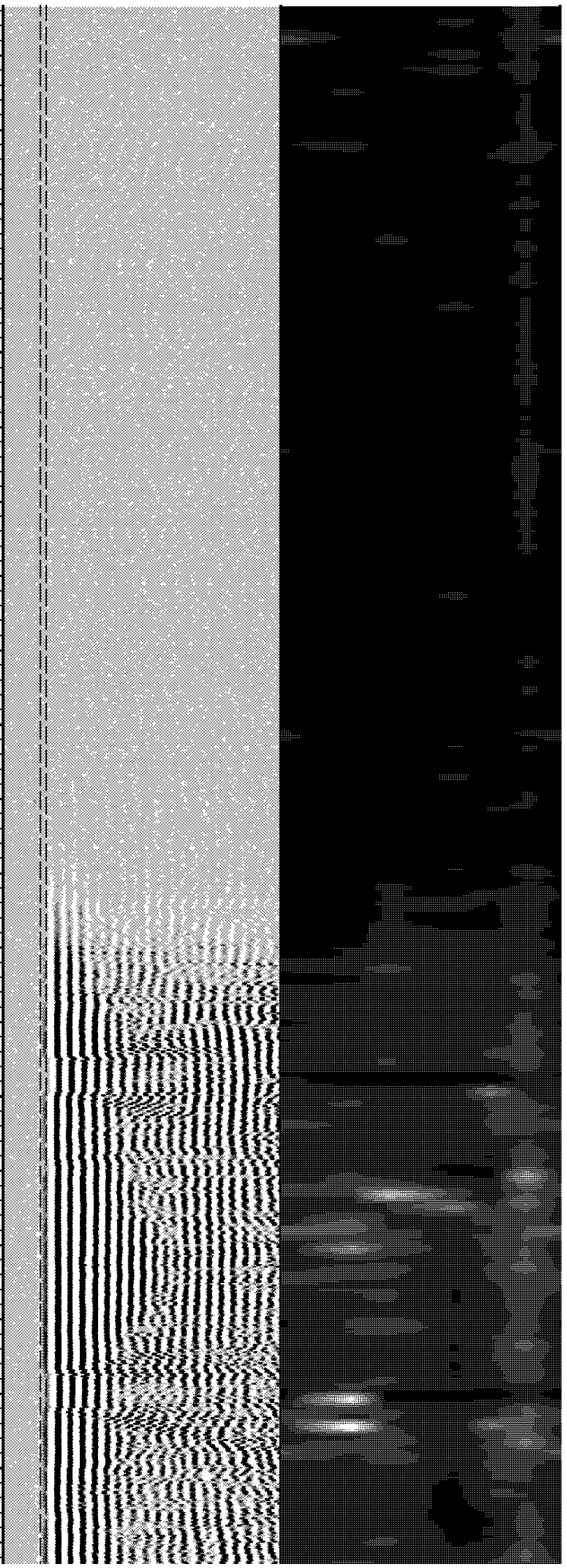
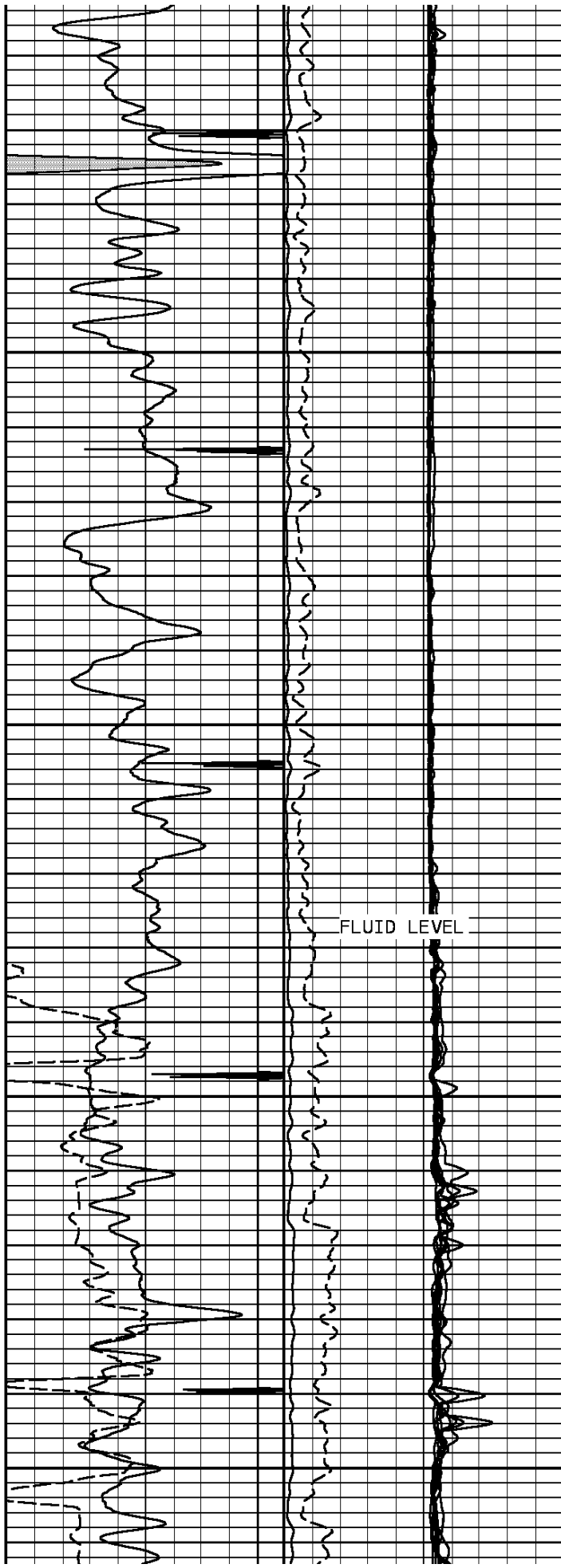
200166 SBLMAIN

FINISH DEPTH: 3059.4 Feet DIRECTION: UP DATE: 04/17/2013 TIME: 02:05 MODE: ORIGINAL  
 RECOMPUTED DATE: 04/17/2013 TIME: 02:05

				<b>SECTOR #8</b>											
				-5 mv 200											
				<b>SECTOR #7</b>											
				-5 mv 200											
				<b>SECTOR #6</b>											
				-5 mv 200											
				<b>SECTOR #5</b>											
				-5 mv 200											
				<b>SECTOR #4</b>											
				-5 mv 200											
				<b>SECTOR #3</b>											
				-5 mv 200											
				<b>SECTOR #2</b>											
				-5 mv 200											
				<b>SECTOR #1</b>											
				-5 mv 200											
		<b>Collar Locator</b>				<b>AMP 3FTX5</b>									
		-3000.0	mv	300.0			0	mv	20						
		<b>Gamma Ray</b>				<b>AMP 3FT</b>									
		0	API	150			0	mv	100						
<b>Tension</b>	<b>TRAVEL TIME 3FT</b>			<b>AMP 3FT</b>		<b>SECTOR #1</b>		<b>VARIABLE DENSITY 5FT</b>		<b>VARIABLE ENERGY</b>					
0 1000	380	Microseconds	180	0	mv	100	-5	mv	200	200	Microseconds	1200	0	Millivolts	80

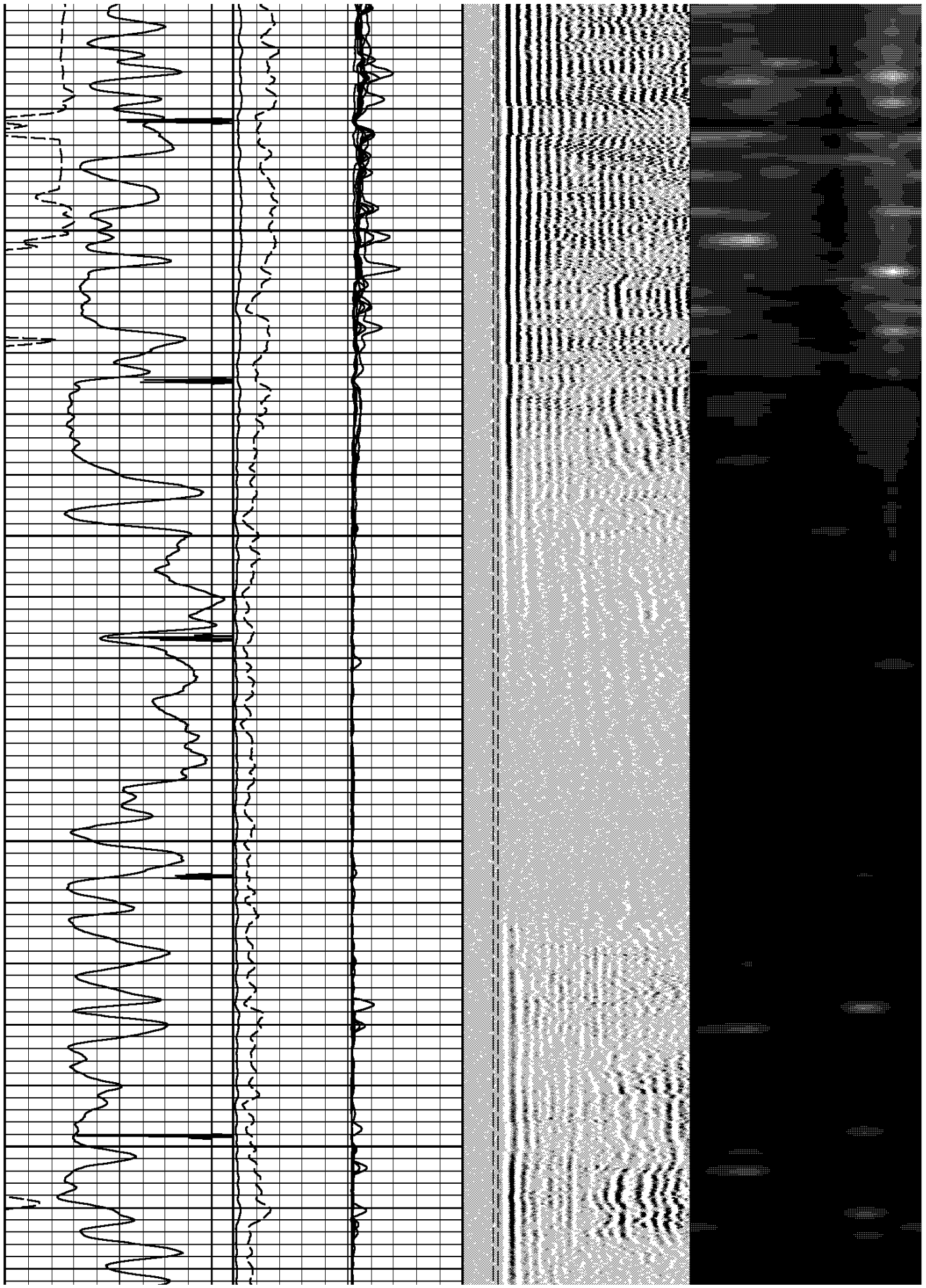
3100

3200



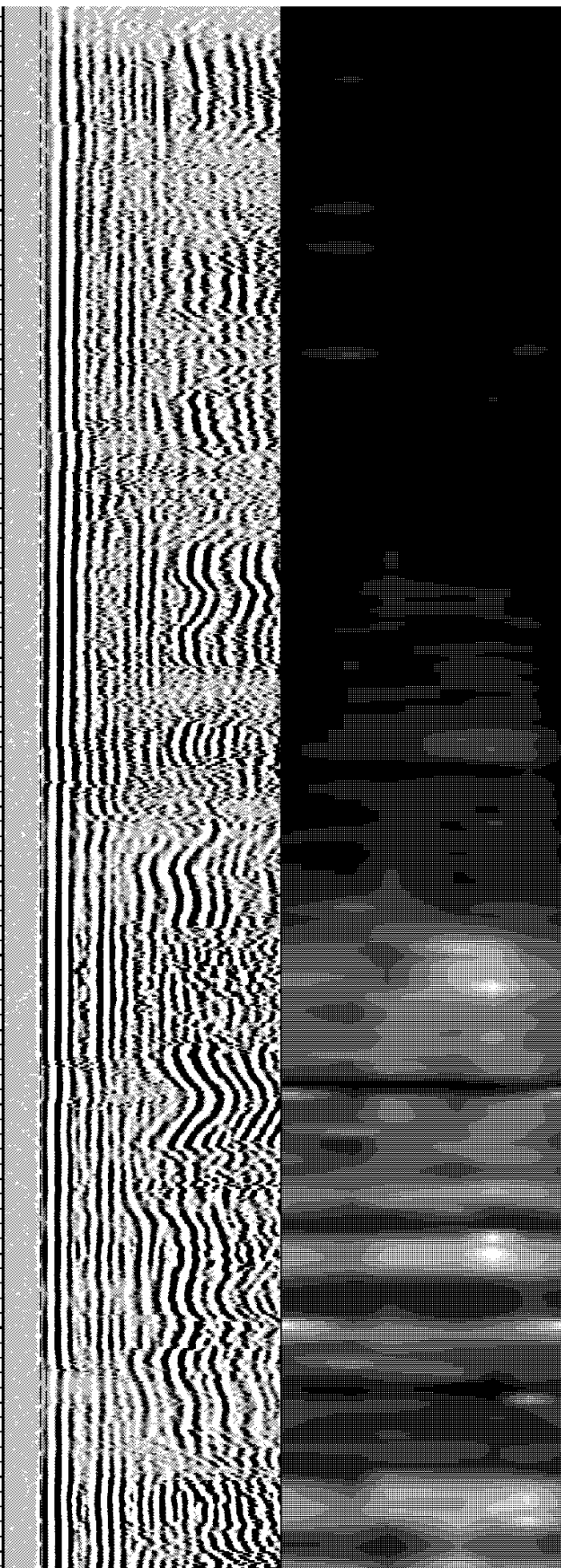
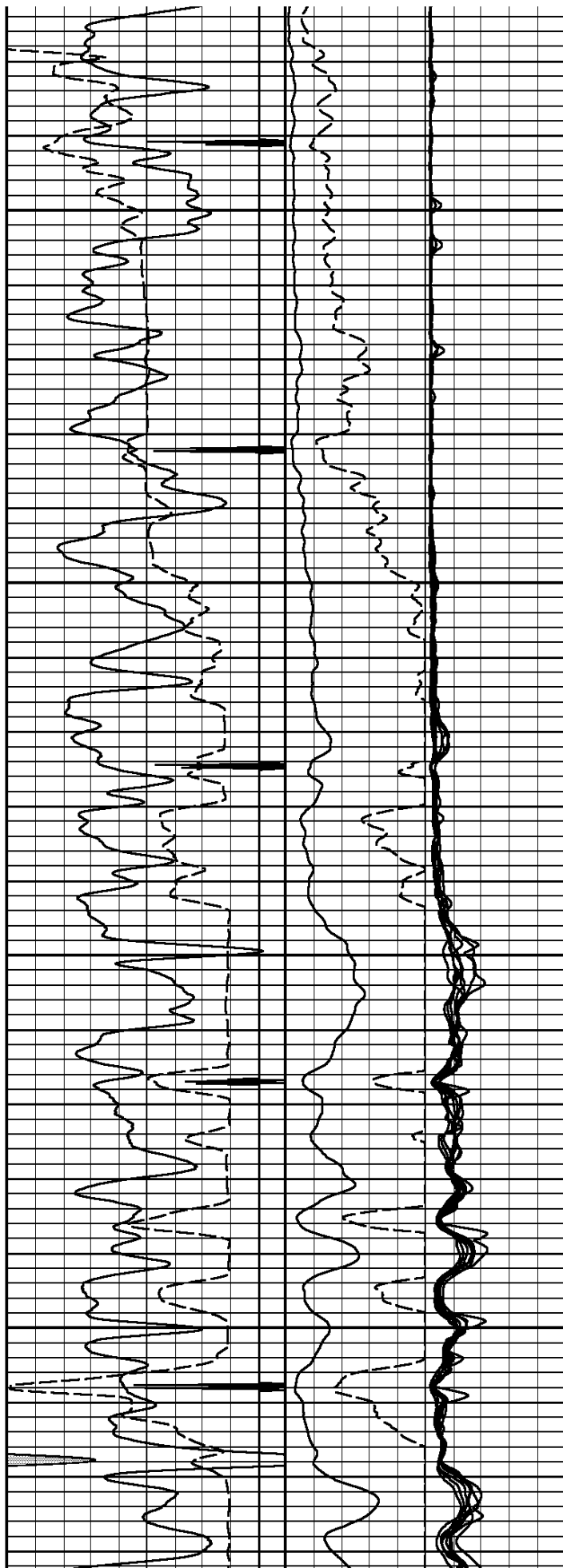
3300

3400



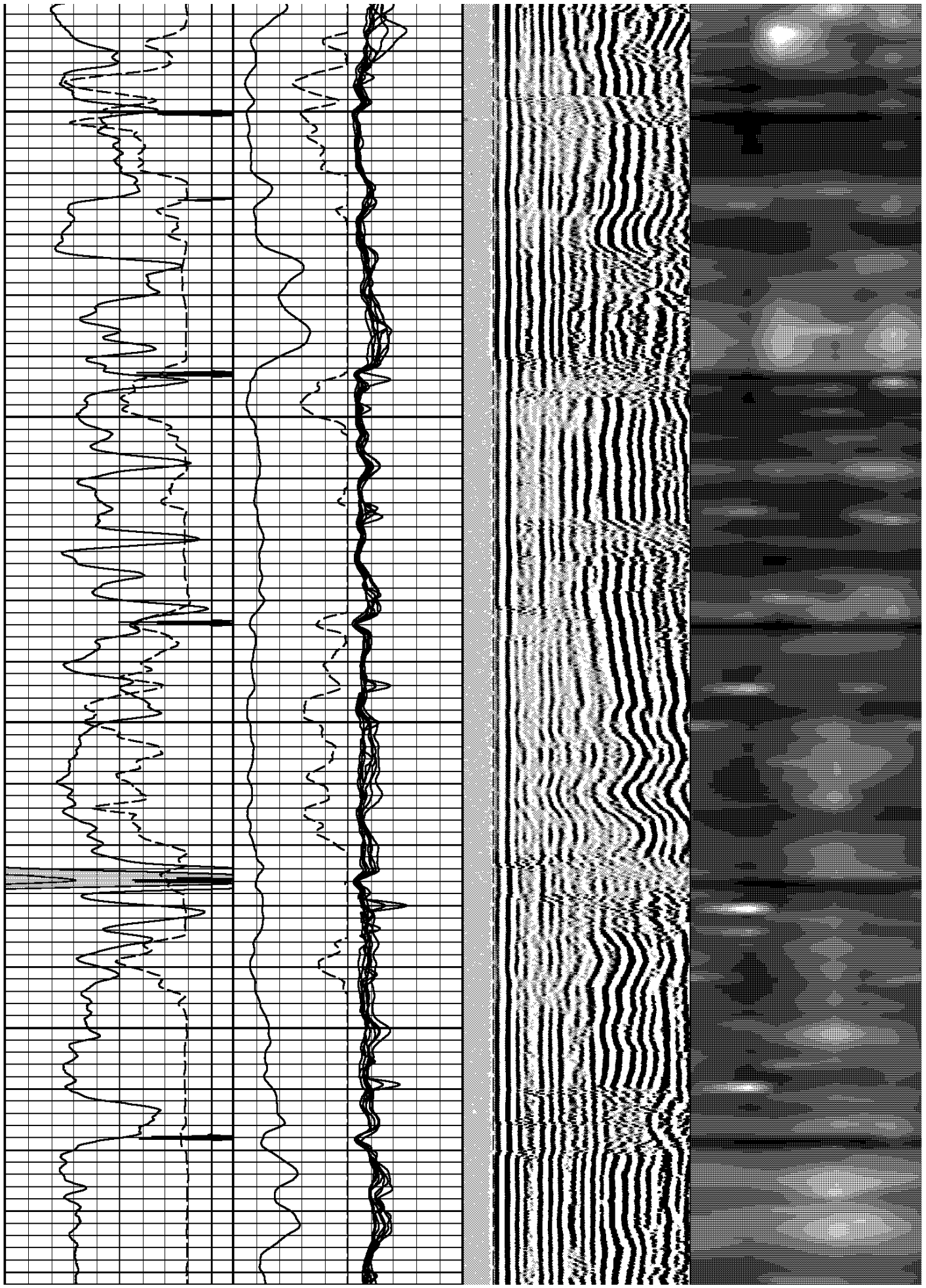
3500

3600



3700

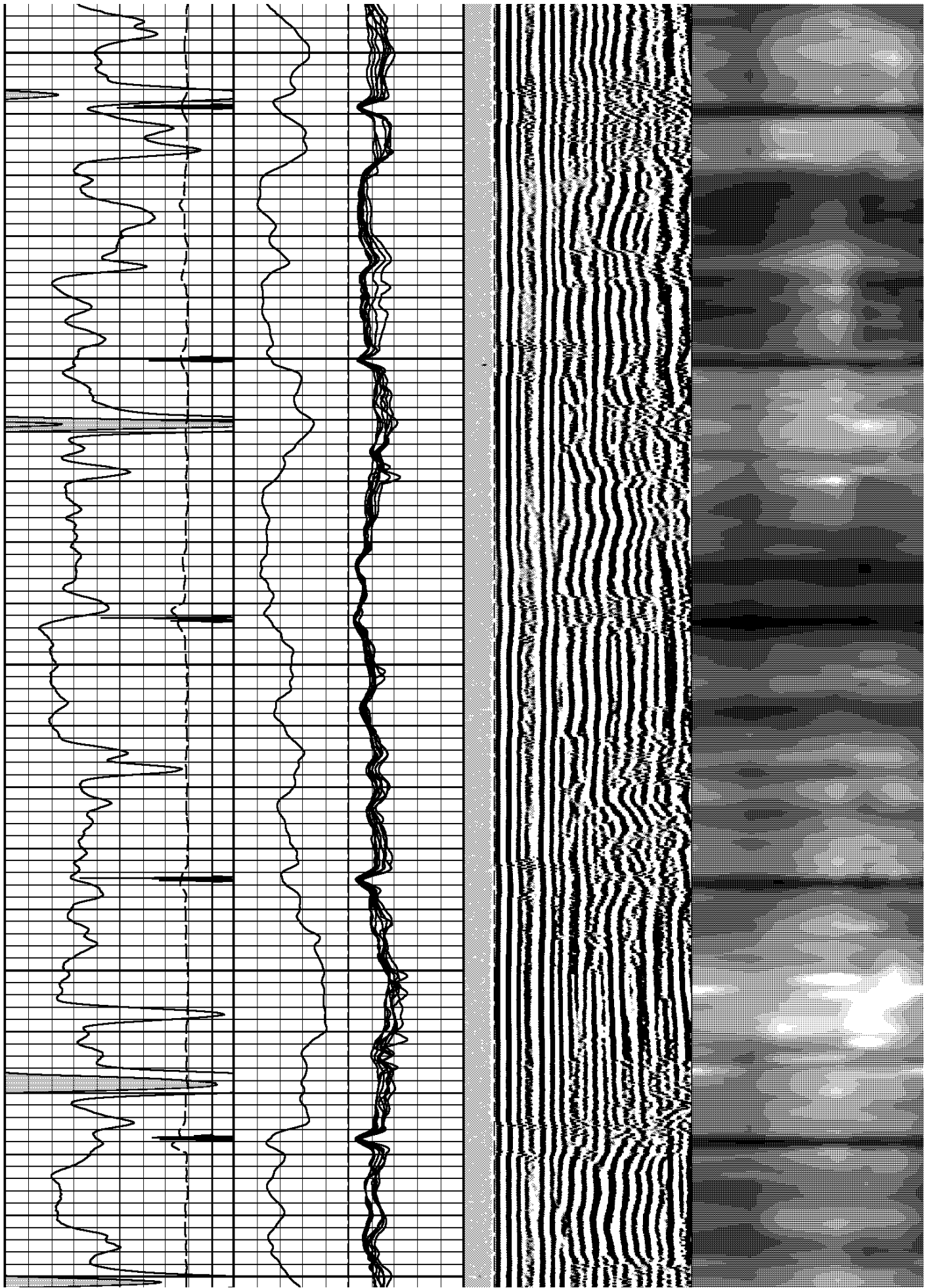
3800



3900

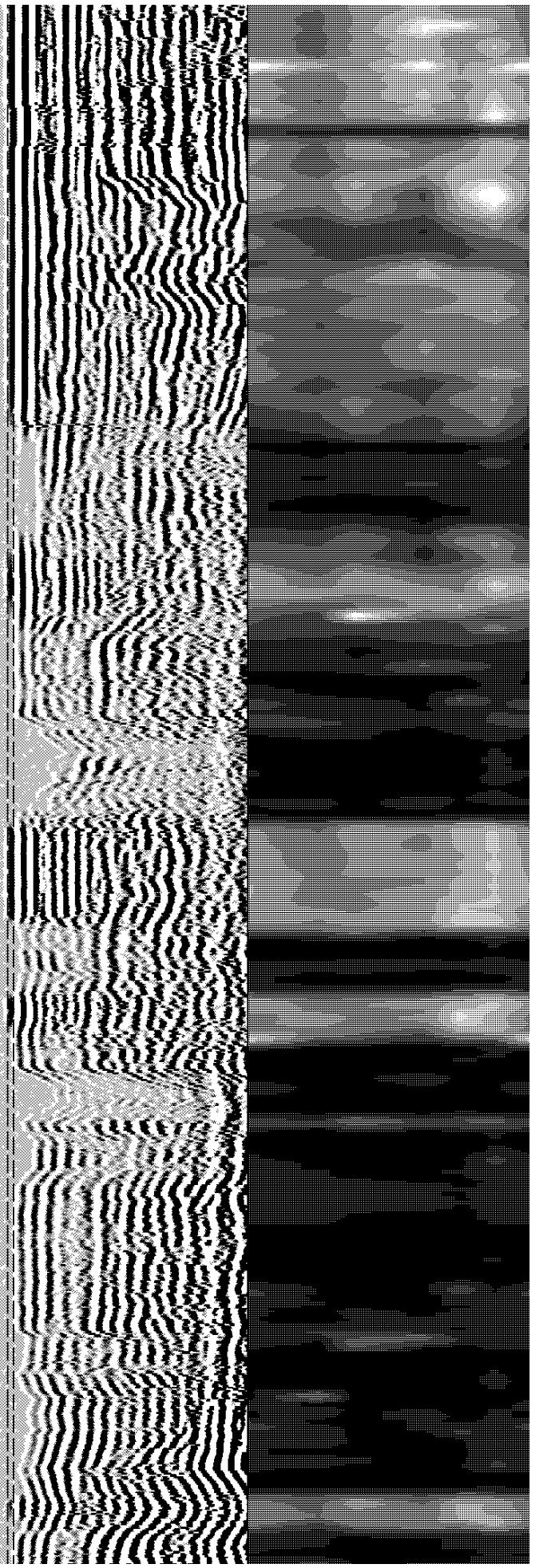
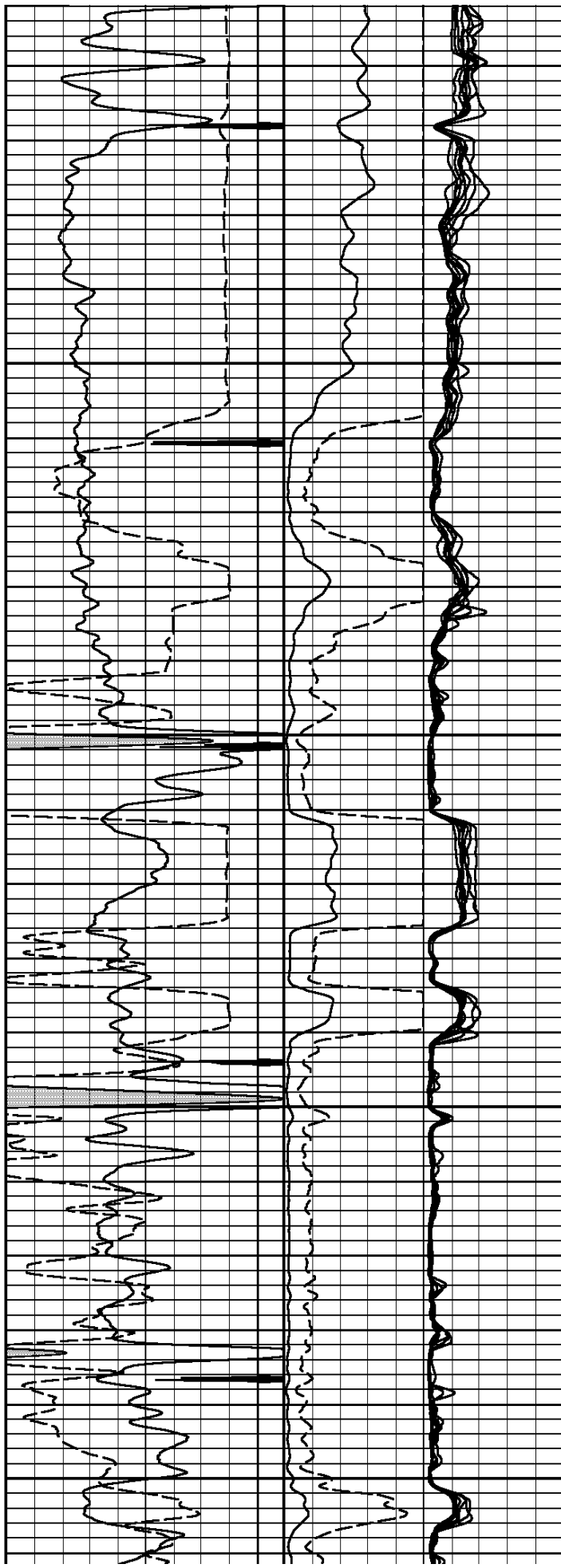
4000

4100



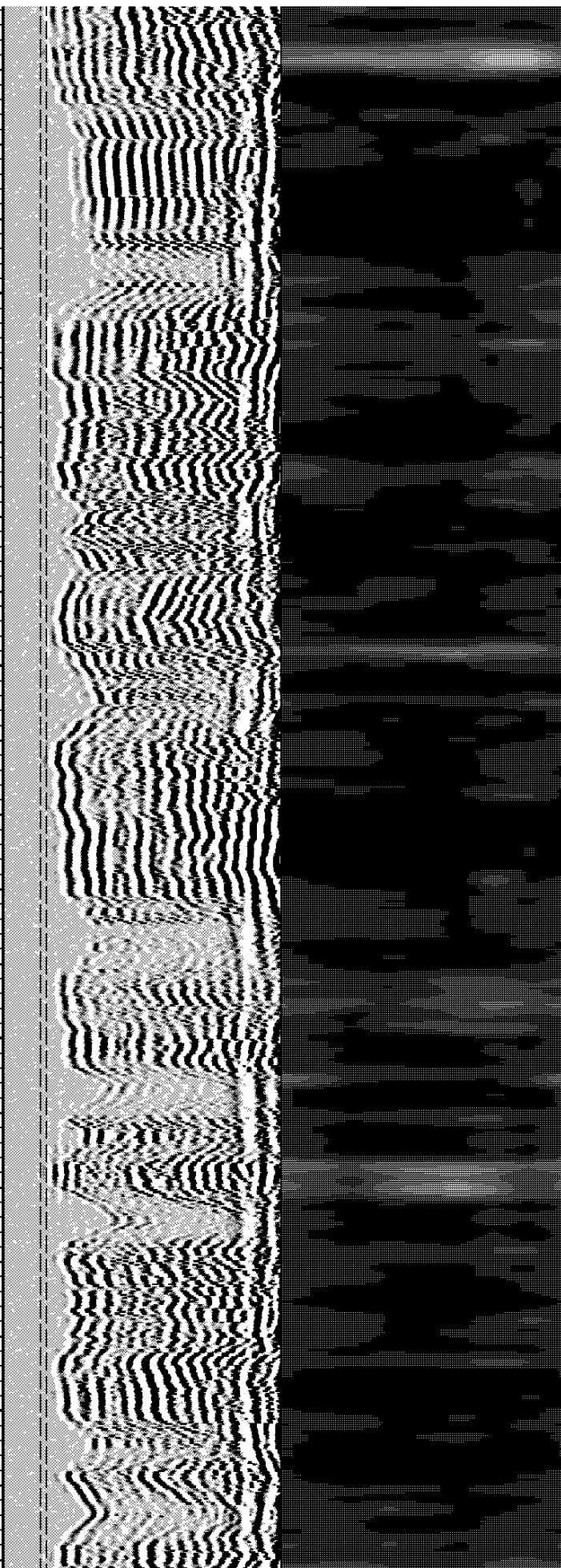
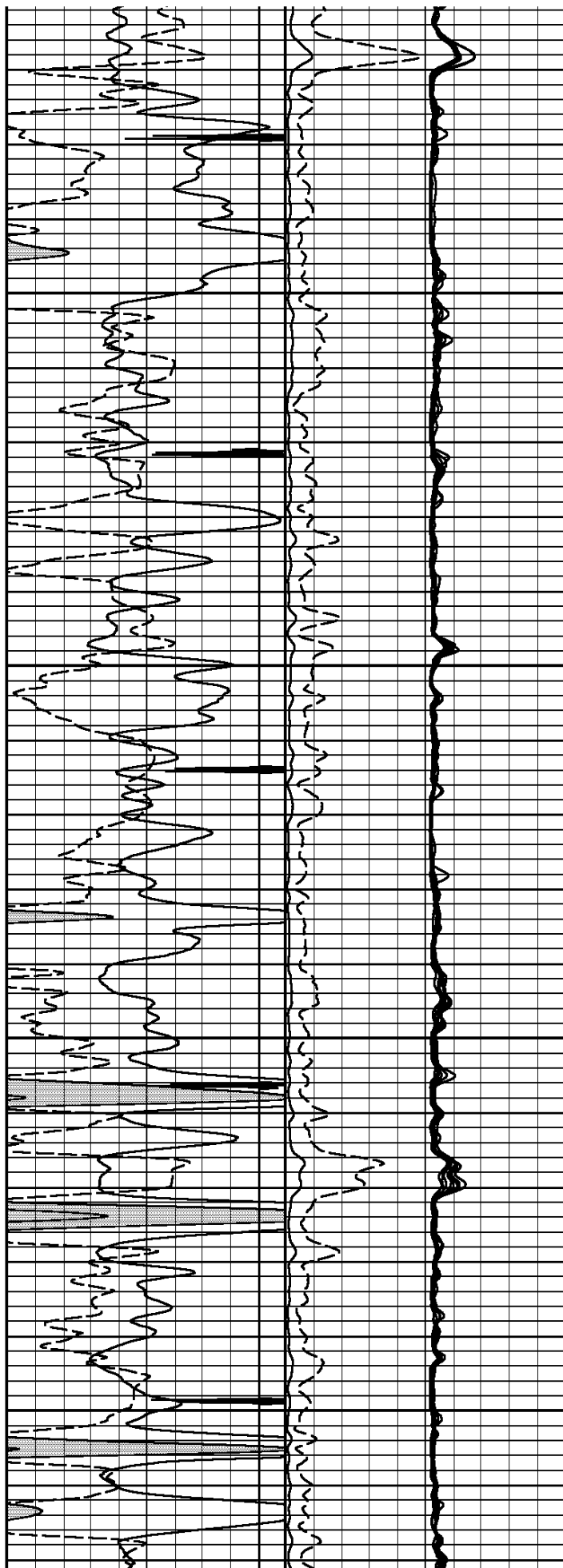
4200

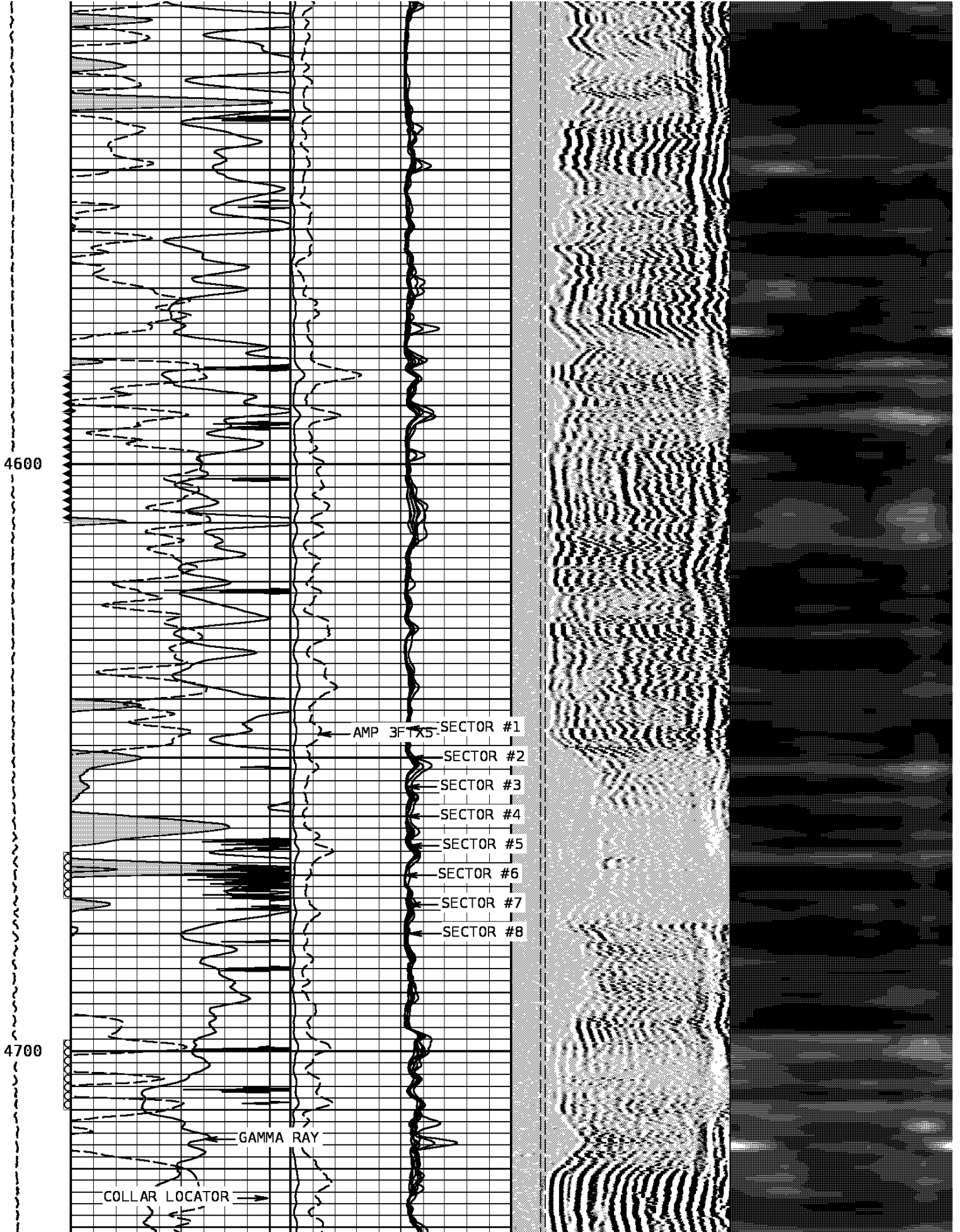
4300

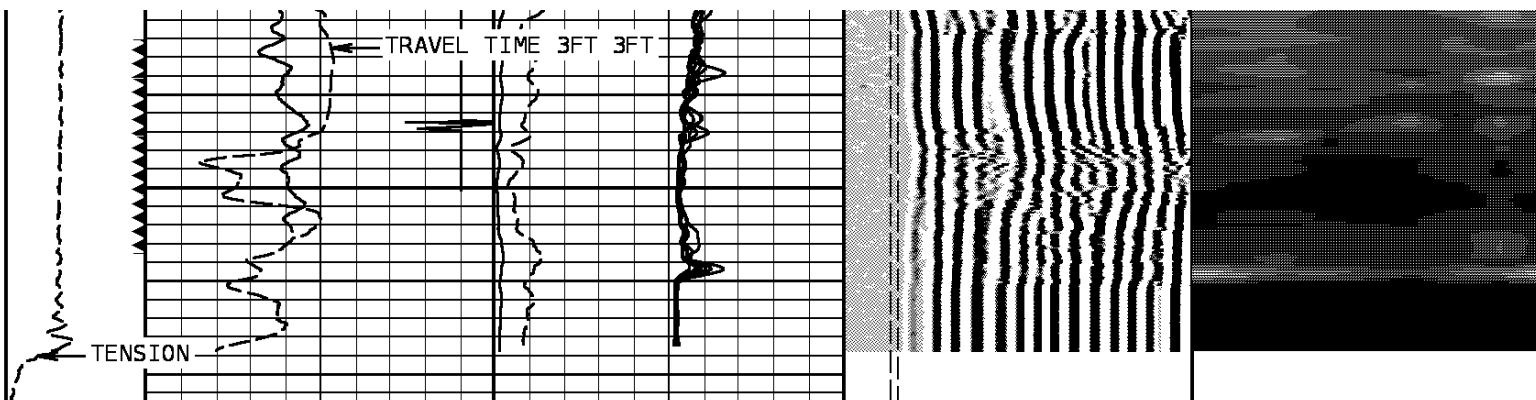


4400

4500







Tension	TRAVEL TIME 3FT	AMP 3FT	SECTOR #1	VARIABLE DENSITY 5FT	VARIABLE ENERGY
0 1000	380 Microseconds 180	0 mv 100	-5 mv 200	200 Microseconds 1200	0 Millivolts 80
<b>Gamma Ray</b>		<b>AMP 3FTX5</b>	<b>SECTOR #2</b>		
0	API 150	0 mv 20	-5 mv 200		
<b>Collar Locator</b>			<b>SECTOR #3</b>		
-3000.0	mv 300.0		-5 mv 200		
			<b>SECTOR #4</b>		
			-5 mv 200		
			<b>SECTOR #5</b>		
			-5 mv 200		
			<b>SECTOR #6</b>		
			-5 mv 200		
			<b>SECTOR #7</b>		
			-5 mv 200		
			<b>SECTOR #8</b>		
			-5 mv 200		

START DEPTH: 4773.4    DIRECTION: UP    DATE: 04/17/2013    TIME: 02:03    MODE: ORIGINAL  
 RECOMPUTED    DATE: 04/17/2013    TIME: 02:03

200166 SBLMAIN

MAIN PASS

DEPTH SCALE: 5":100'

LOGGED VERSION: 2012.07.18.162"

REMARKS

REMARKS

LOGGED WITH 0 PSI AT SURFACE

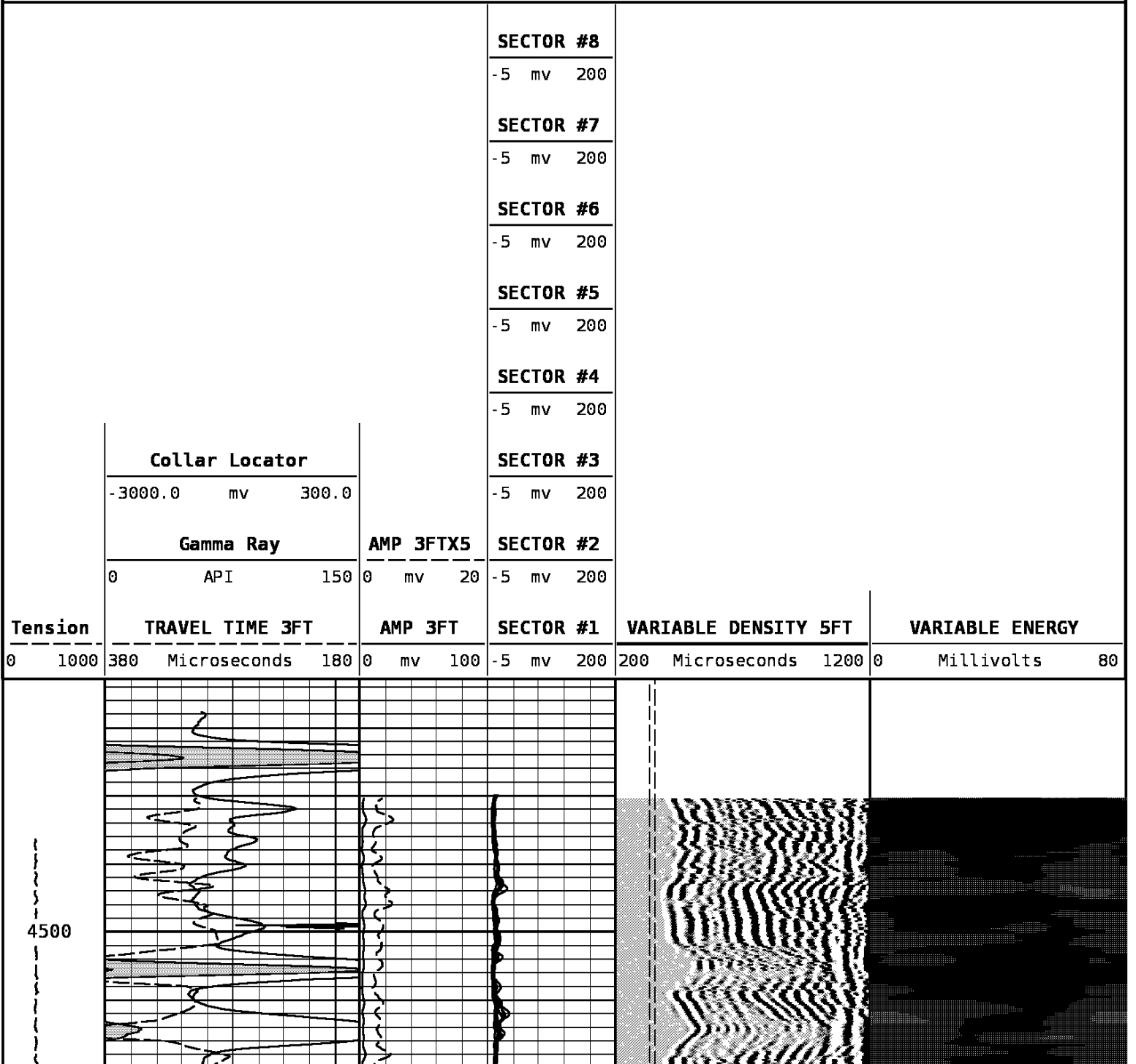
DEPTH SCALE: 5":100'

PROCESSED VERSION: 2012.07.18.162"

MAIN PASS

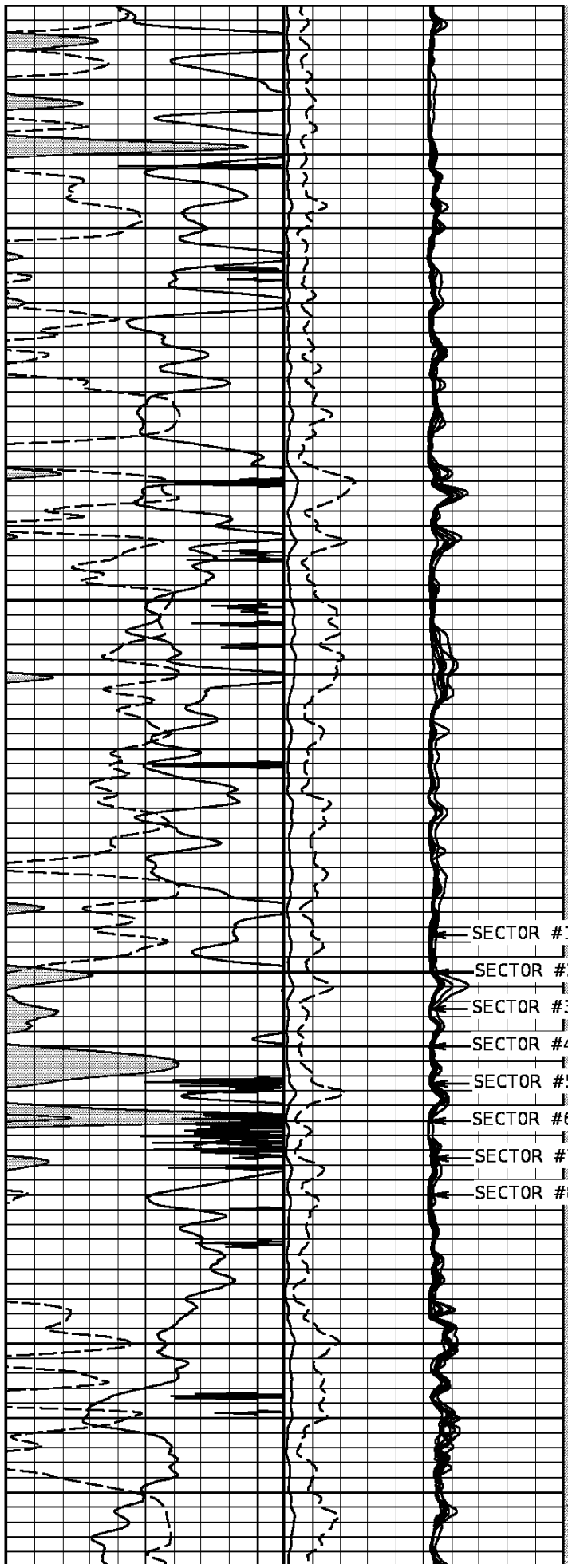
200166 SBLREPEAT

FINISH DEPTH: 4486.3 Feet DIRECTION: UP DATE: 04/17/2013 TIME: 02:08 MODE: ORIGINAL  
 RECOMPUTED DATE: 04/17/2013 TIME: 02:08

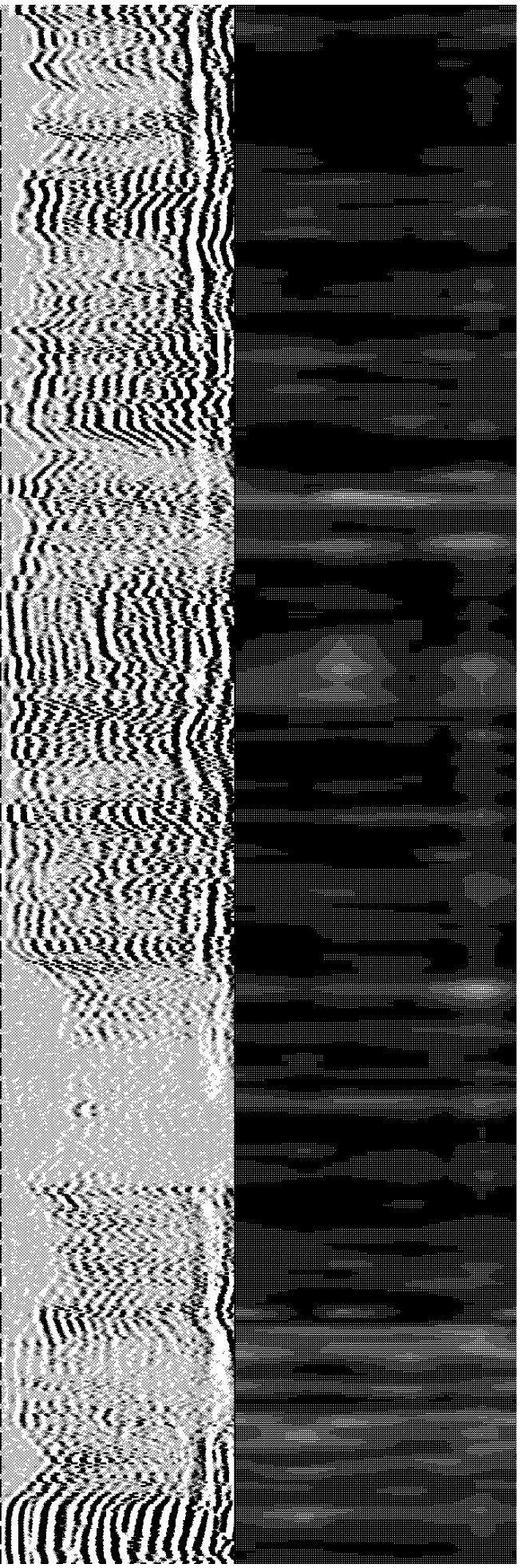


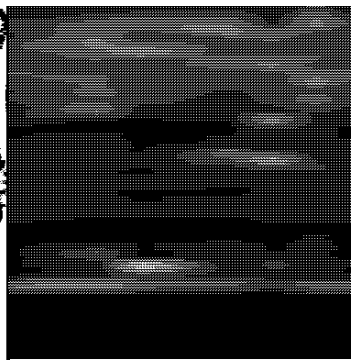
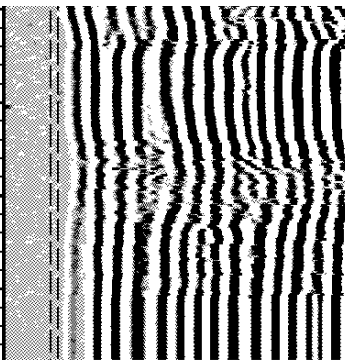
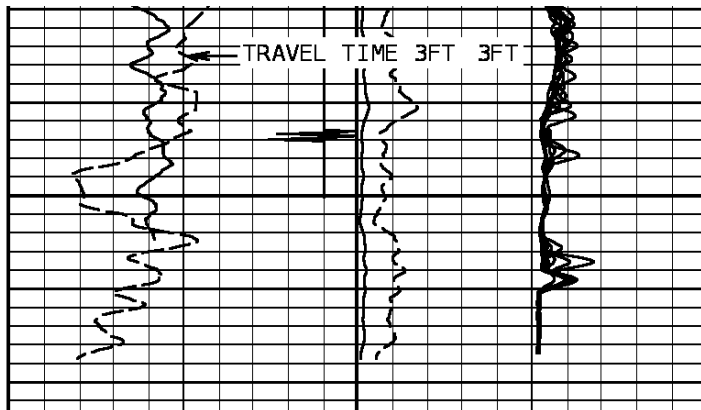
4600

4700



- ← SECTOR #1
- ← SECTOR #2
- ← SECTOR #3
- ← SECTOR #4
- ← SECTOR #5
- ← SECTOR #6
- ← SECTOR #7
- ← SECTOR #8





Tension	TRAVEL TIME 3FT	AMP 3FT	SECTOR #1	VARIABLE DENSITY 5FT	VARIABLE ENERGY
0 1000	380 Microseconds 180	0 mv 100	-5 mv 200	200 Microseconds 1200	0 Millivolts 80
	<b>Gamma Ray</b>	<b>AMP 3FTX5</b>	<b>SECTOR #2</b>		
	0 API 150	0 mv 20	-5 mv 200		
	<b>Collar Locator</b>		<b>SECTOR #3</b>		
	-3000.0 mv 300.0		-5 mv 200		
			<b>SECTOR #4</b>		
			-5 mv 200		
			<b>SECTOR #5</b>		
			-5 mv 200		
			<b>SECTOR #6</b>		
			-5 mv 200		
			<b>SECTOR #7</b>		
			-5 mv 200		
			<b>SECTOR #8</b>		
			-5 mv 200		

START DEPTH: 4773.5 DIRECTION: UP DATE: 04/17/2013 TIME: 02:08 MODE: ORIGINAL  
 RECOMPUTED DATE: 04/17/2013 TIME: 02:08

200166 SBLREPEAT

MAIN PASS

DEPTH SCALE: 5":100'

LOGGED VERSION: 2012.07.18.162"

1 7/16" Cablehead

Weight 2.2 LB  
 Length 1.0 FT  
 Max. Diameter 1.44 IN

Total Stack Weight 219.2 LB in air  
 Total Stack Length 24.01FT

**Collar Locator**

Weight 39.8 lb  
 Length 3.40 ft  
 Max. Diameter 2.7 in

**Slim Hole Gamma Ray**

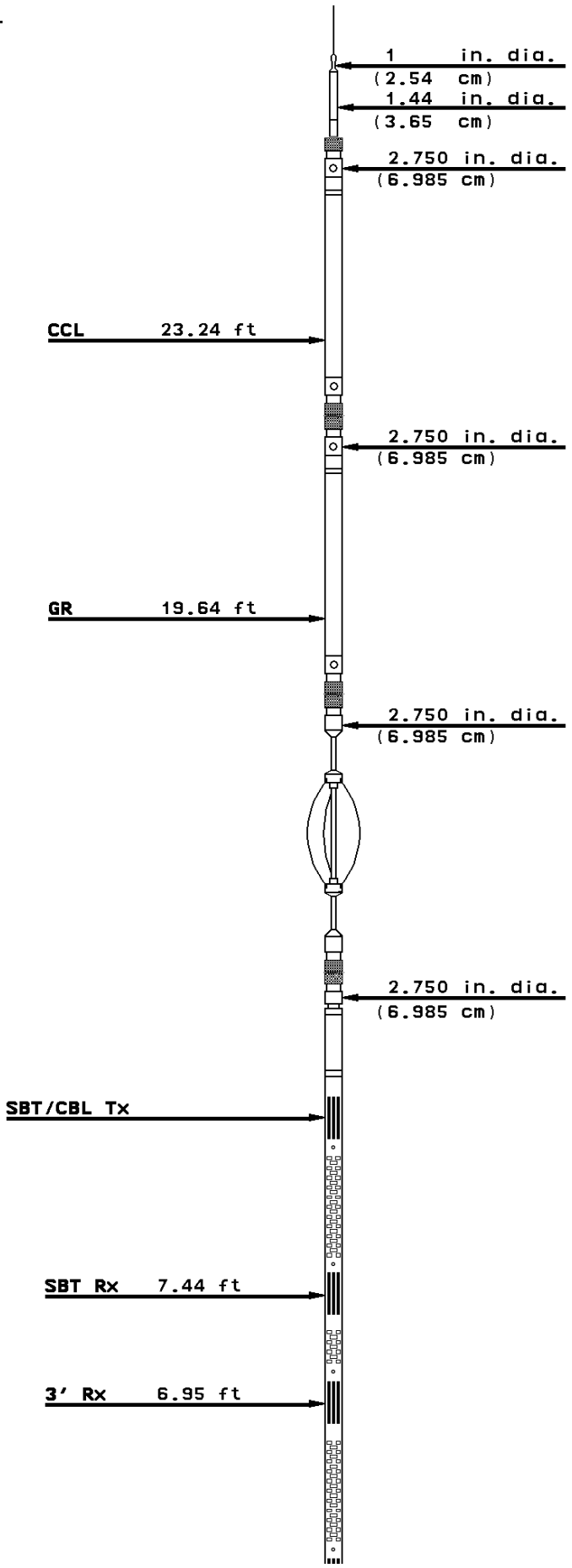
Weight 39.8 lb  
 Length 4.71 ft  
 Max. Diameter 2.7 in

**Slim Hole Centralizer**

Weight 23.8 lb  
 Length 3.08 ft  
 Max. Diameter 2.7 in

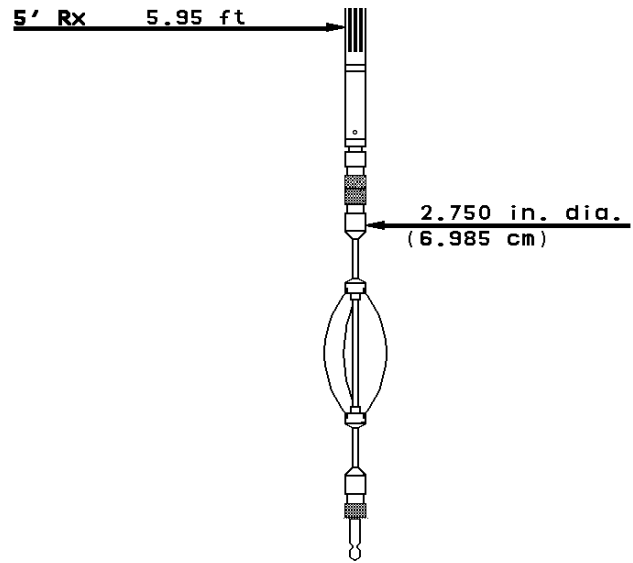
**Sector Bond**

Weight 89.8 lb  
 Length 10.32 ft  
 Max. Diameter 2.7 in



**Slim Hole Centralizer**

Weight 11.9 lb  
Length 2.49 ft  
Max. Diameter 2.7 in



COMPANY SANDRIDGE ENERGY  
WELL CAMPBELL 2133 1-6RE  
FIELD BUERKLE  
COUNTY FINNEY STATE KANSAS

