



Pioneer Energy Services

Dual Compensated Porosity Log

API No.	15-189-22,832-00-00		
Company	Palmer Oil, Inc.		
Well	Willis No.23-7		
Field	Willis		
County	Stevens		
State	Kansas		
Location	2250' FSL & 2300' FEL		
Other Services	DILMEL		
Sec:	23	Twp:	32S
		Rge:	37W
Permanent Datum	Ground Level	Elevation	3104
Log Measured From	Kelly Bushing	13 Ft. Above Perm. Datum	
Drilling Measured From	Kelly Bushing		
Date	2/13/2014		
Run Number	One		
Type Log	CNL / CDL		
Depth Driller	6500		
Depth Logger	6506		
Bottom Logged Interval	6485		
Top Logged Interval	4600		
Type Fluid In Hole	Chemical		
Salinity, PPM CL	2,100		
Density	9.35		
Level	Full		
Max. Rec. Temp. F	141		
Operating Rig Time	3 Hours		
Equipment -- Location	17 Hays		
Recorded By	C. Desaire		
Witnessed By	Wyatt Urban		

Borehole Record				Casing Record			
Run No.	Bit	From	To	Size	Wgt.	From	To
One	12.25	00	1740	8.625	23#	00	1740
Two	7.875	1740	TD				

<<< Fold Here >>>

All interpretations are opinions based on inferences from electrical or other measurements and we cannot and do not guarantee the accuracy or correctness of any interpretation, and we shall not, except in the case of gross or willful negligence on our part, be liable or responsible for any loss, costs, damages, or expenses incurred or sustained by anyone resulting from any interpretation made by any of our officers, agents or employees. These interpretations are also subject to our general terms and conditions set out in our current Price Schedule.

Comments

Thank you for using Log-Tech, Inc.
(785) 625-3858

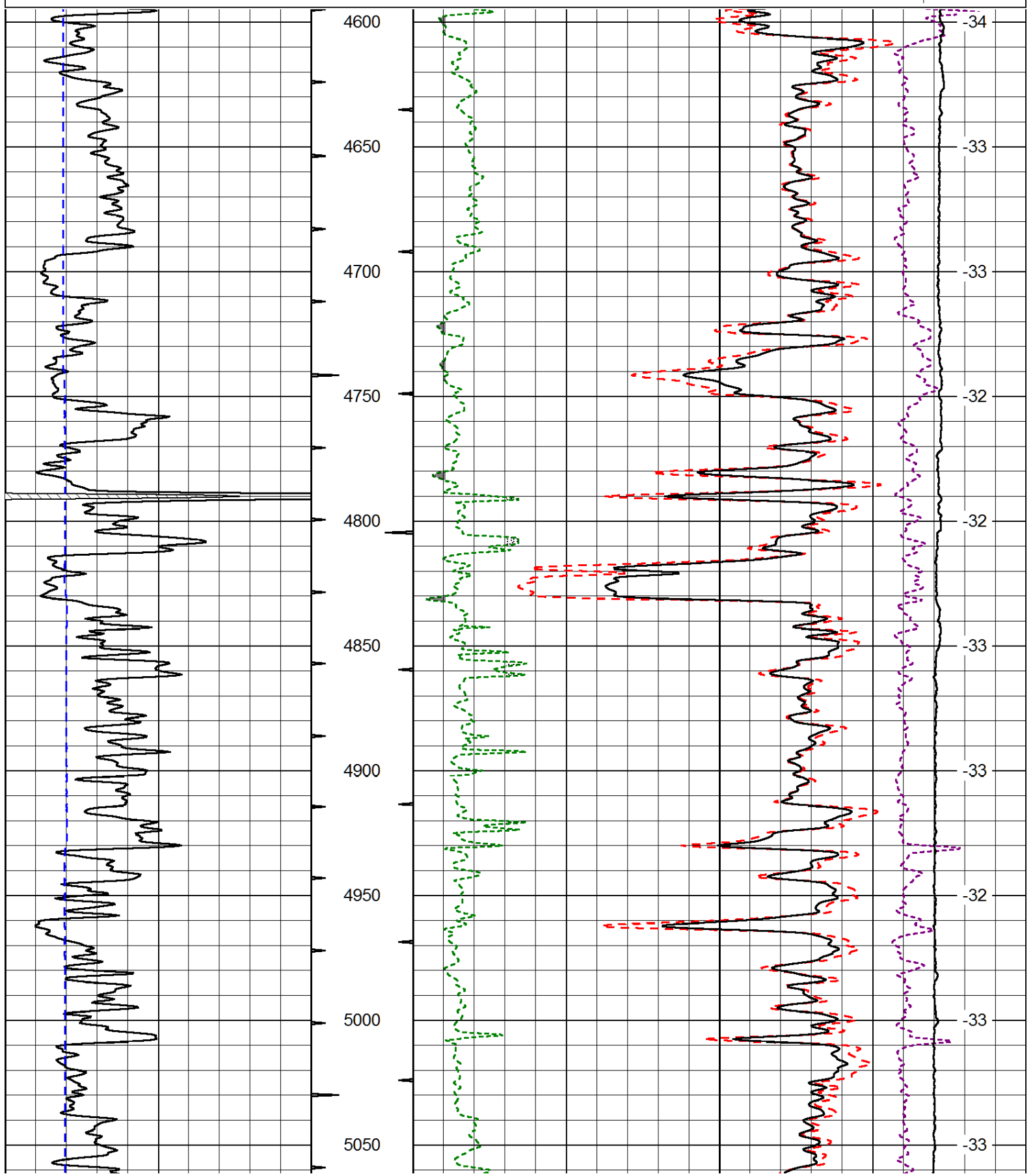
Moscow KS, S to U Rd, 2 W,
1/2 S between tank batt., N Into

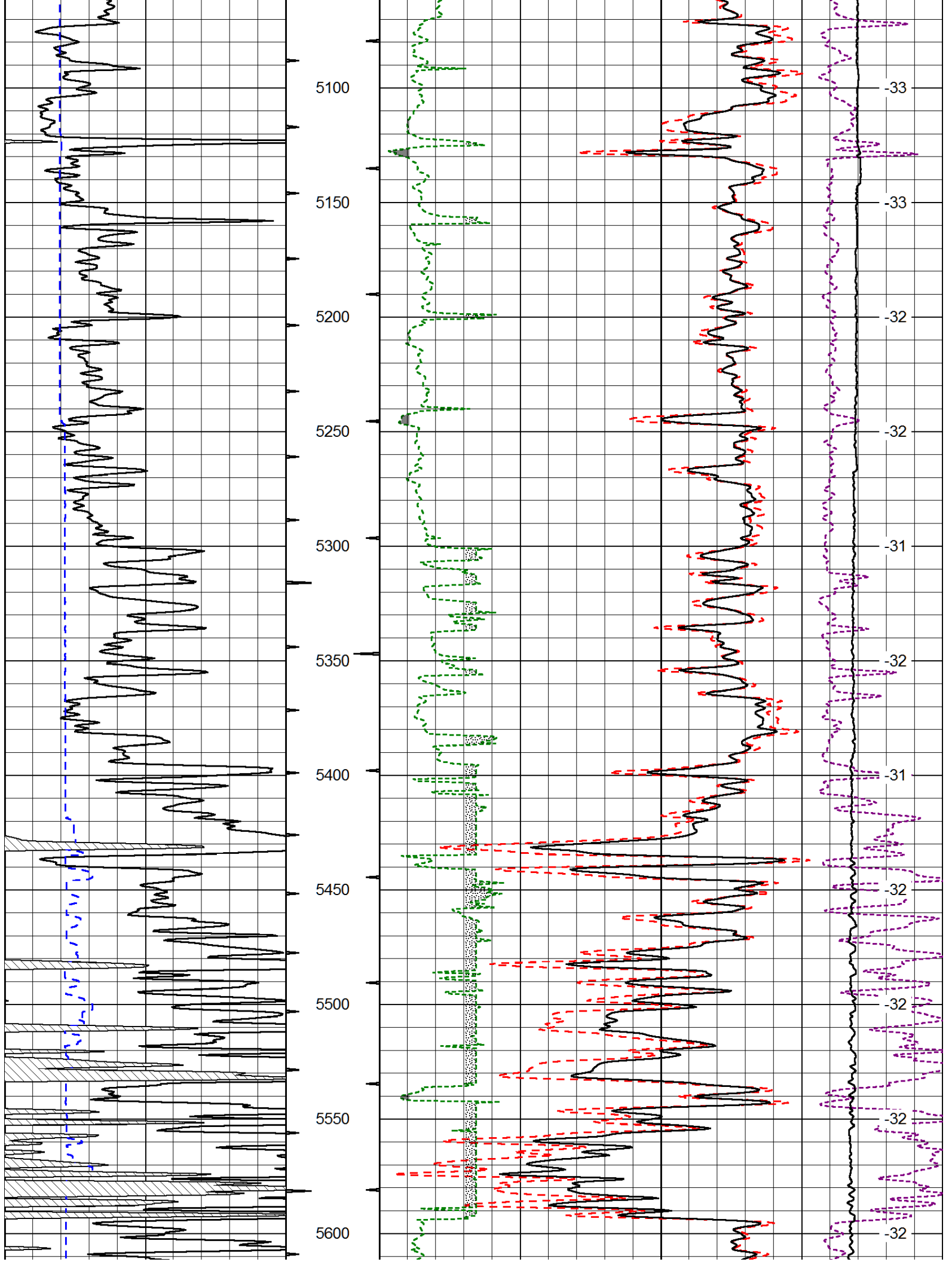
Database File: palmhd.db
 Dataset Pathname: dil/palmstk
 Presentation Format: cdl
 Dataset Creation: Thu Feb 13 02:37:18 2014
 Charted by: Depth in Feet scaled 1:600

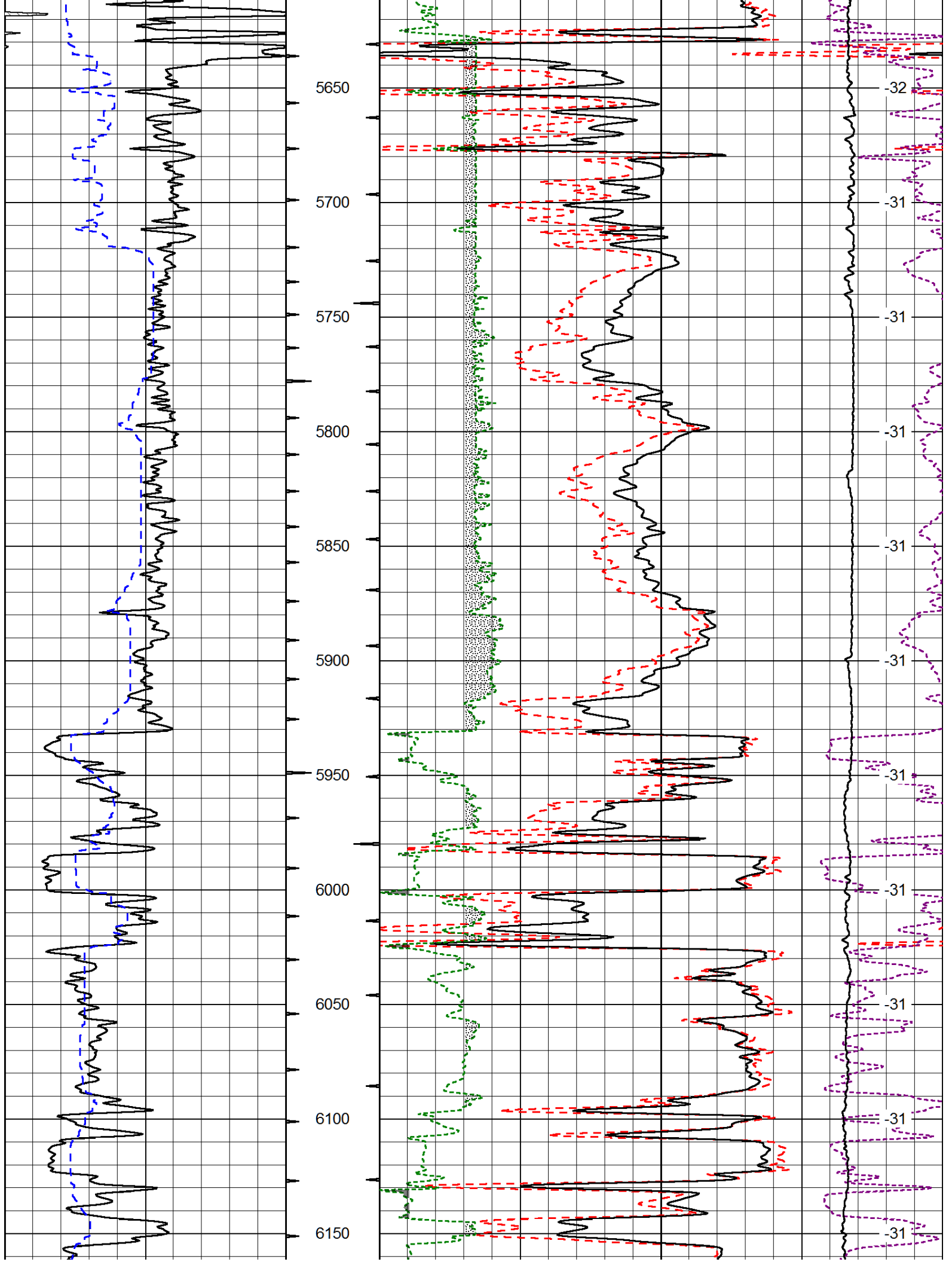
0	Gamma Ray (GAPI)	150
6	Caliper (in)	16

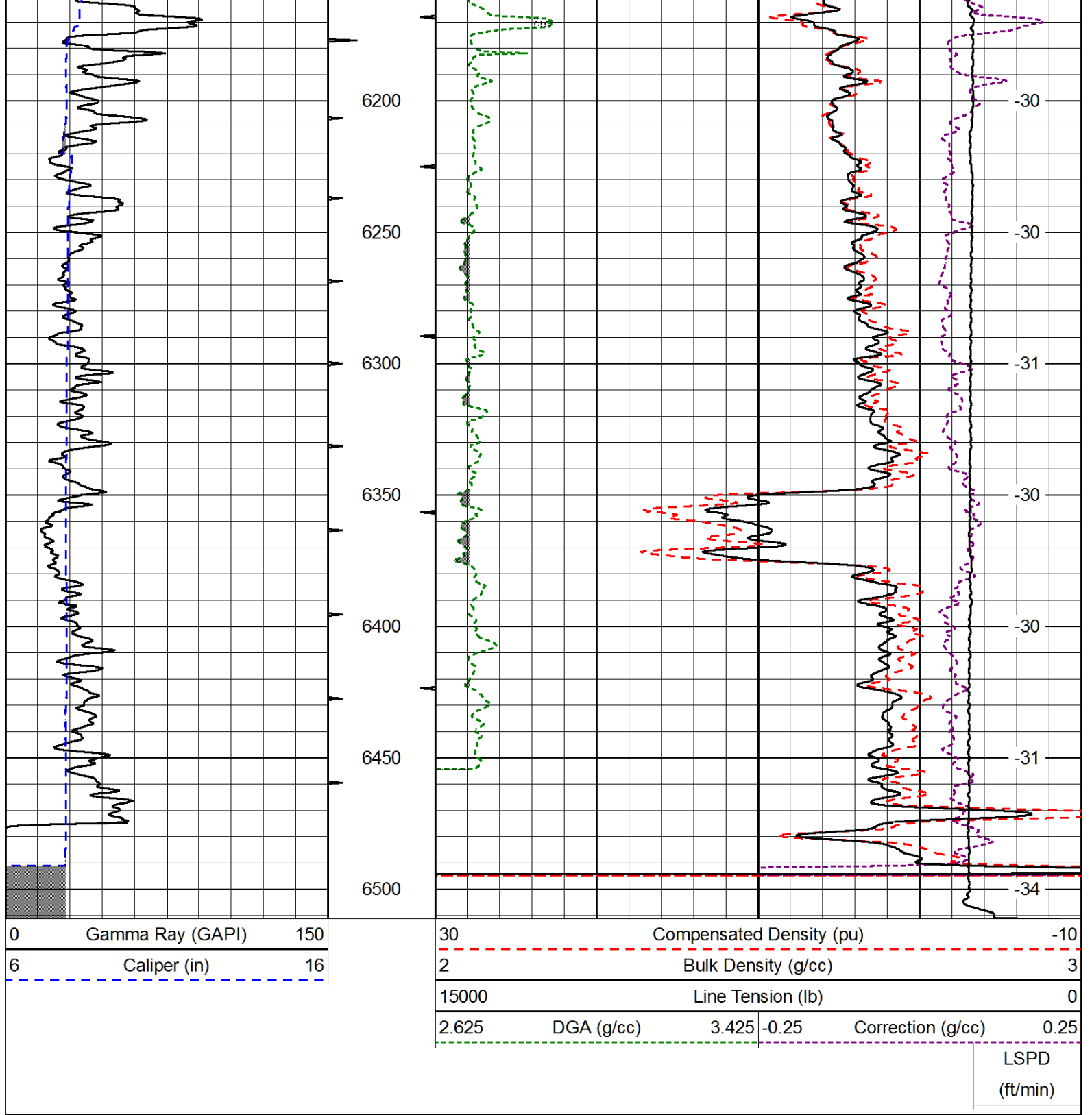
30	Compensated Density (pu)		-10
2	Bulk Density (g/cc)		3
15000	Line Tension (lb)		0
2.625	DGA (g/cc)	3.425	-0.25
			Correction (g/cc)
			0.25

LSPD
(ft/min)









Database File: palmhd.db
 Dataset Pathname: dil/palmstk
 Presentation Format: cndlspec
 Dataset Creation: Thu Feb 13 02:37:18 2014
 Charted by: Depth in Feet scaled 1:240

