



Pioneer Energy Services

Microresistivity Log

API No.	15-189-22,832-00-00		
Company	Palmer Oil, Inc.		
Well	Willis No.23-7		
Field	Willis		
County	Stevens	State	Kansas
Location	2250' FSL & 2300' FEL		
Sec: 23	Twp: 32S	Rge: 37W	Other Services CNL/CDL DIL

Permanent Datum	Ground Level	Elevation 3104	K.B. 3117 D.F. 3104 G.L. 3104
Log Measured From	Kelly Bushing	13 Ft. Above Perm. Datum	
Drilling Measured From	Kelly Bushing		
Date	2/13/2014		
Run Number	Two		
Depth Driller	6500		
Depth Logger	6506		
Bottom Logged Interval	6505		
Top Log Interval	4600		
Casing Driller	8.625 @ 1740		
Casing Logger	1737		
Bit Size	7.875		
Type Fluid in Hole	Chemical		
Salinity,ppm CL	2,100		
Density / Viscosity	9.35	57	
pH / Fluid Loss	9.5	8.8	
Source of Sample	Flowline		
Rm @ Meas. Temp	.65	@ 47	
Rmf @ Meas. Temp	.49	@ 47	
Rmc @ Meas. Temp	.88	@ 47	
Source of Rmf / Rmc	Charts		
Rm @ BHT	.22	@ 141	
Operating Rig Time	3 Hours		
Max Rec. Temp. F	141		
Equipment Number	17		
Location	Hays		
Recorded By	C. Desaire		
Witnessed By	Wyatt Urban		

<<< Fold Here >>>

All interpretations are opinions based on inferences from electrical or other measurements and we cannot and do not guarantee the accuracy or correctness of any interpretation, and we shall not, except in the case of gross or willful negligence on our part, be liable or responsible for any loss, costs, damages, or expenses incurred or sustained by anyone resulting from any interpretation made by any of our officers, agents or employees. These interpretations are also subject to our general terms and conditions set out in our current Price Schedule.

Comments

Thank you for using Log-Tech, Inc.
(785) 625-3858

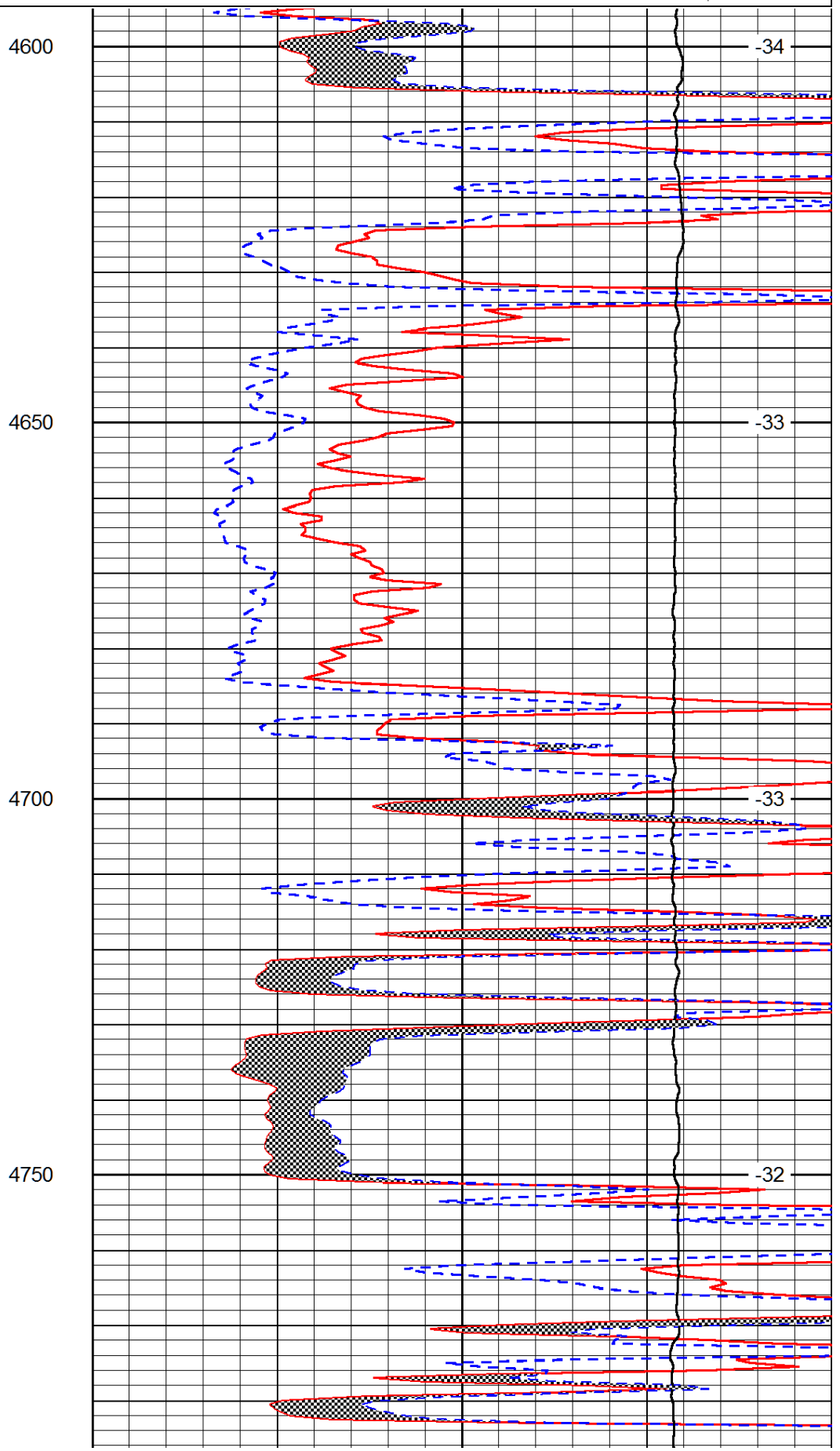
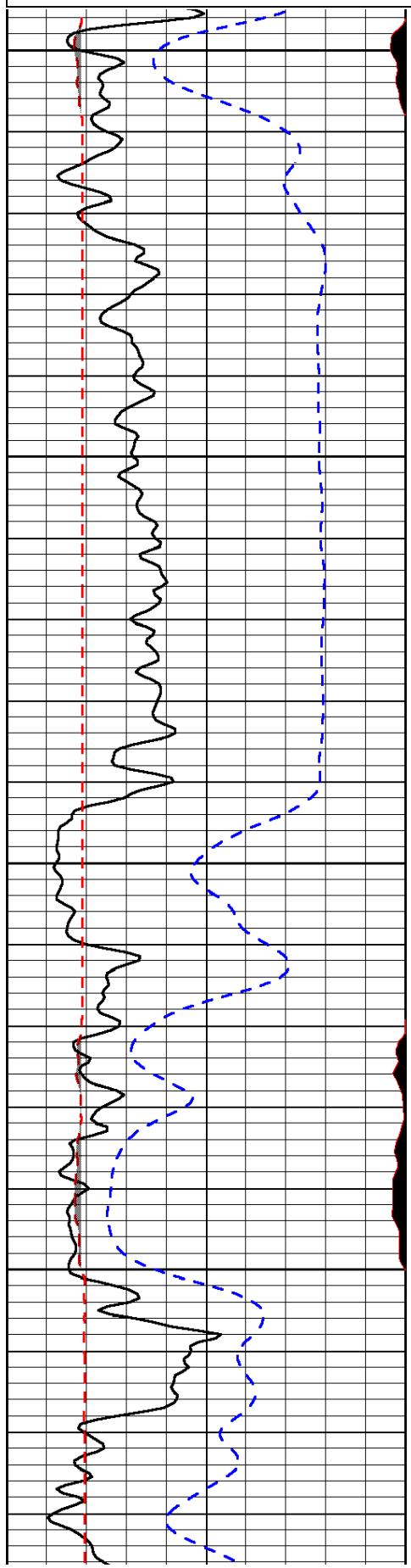
Moscow KS, S to U Rd, 2 W,
1/2 S between tank batt., N Into

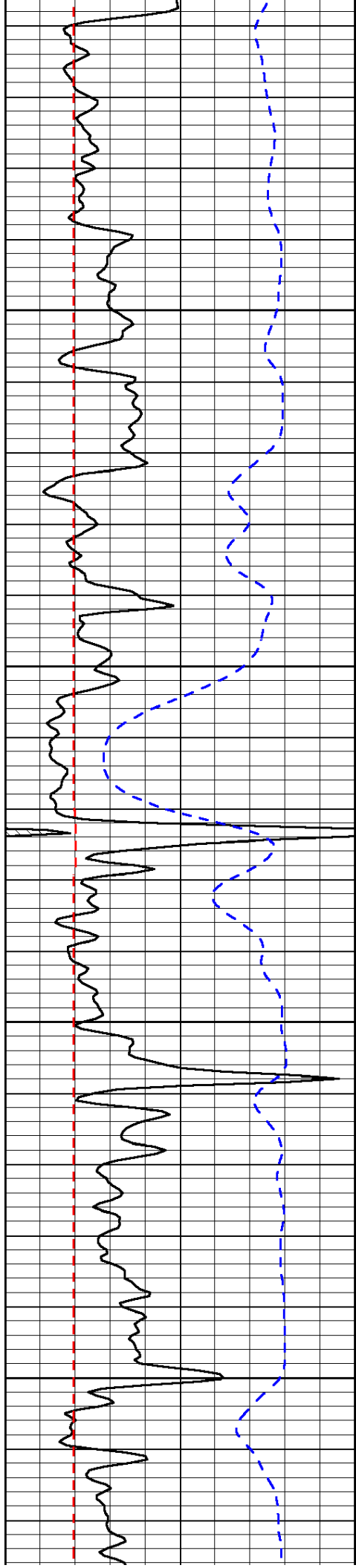
Database File: palmhd.db
 Dataset Pathname: dil/palmstk
 Presentation Format: micro
 Dataset Creation: Thu Feb 13 02:37:18 2014
 Charted by: Depth in Feet scaled 1:240

0	Gamma Ray (GAPI)	150
6	MCAL (in)	16
2.875	Mud Cake (in)	7.875
-200	SP (mV)	0

0	Micro Inverse 1 X 1 (Ohm-m)	40
0	Micro Normal 2" (Ohm-m)	40
10000	Line Weight (lb)	0

LSPD
(ft/min)



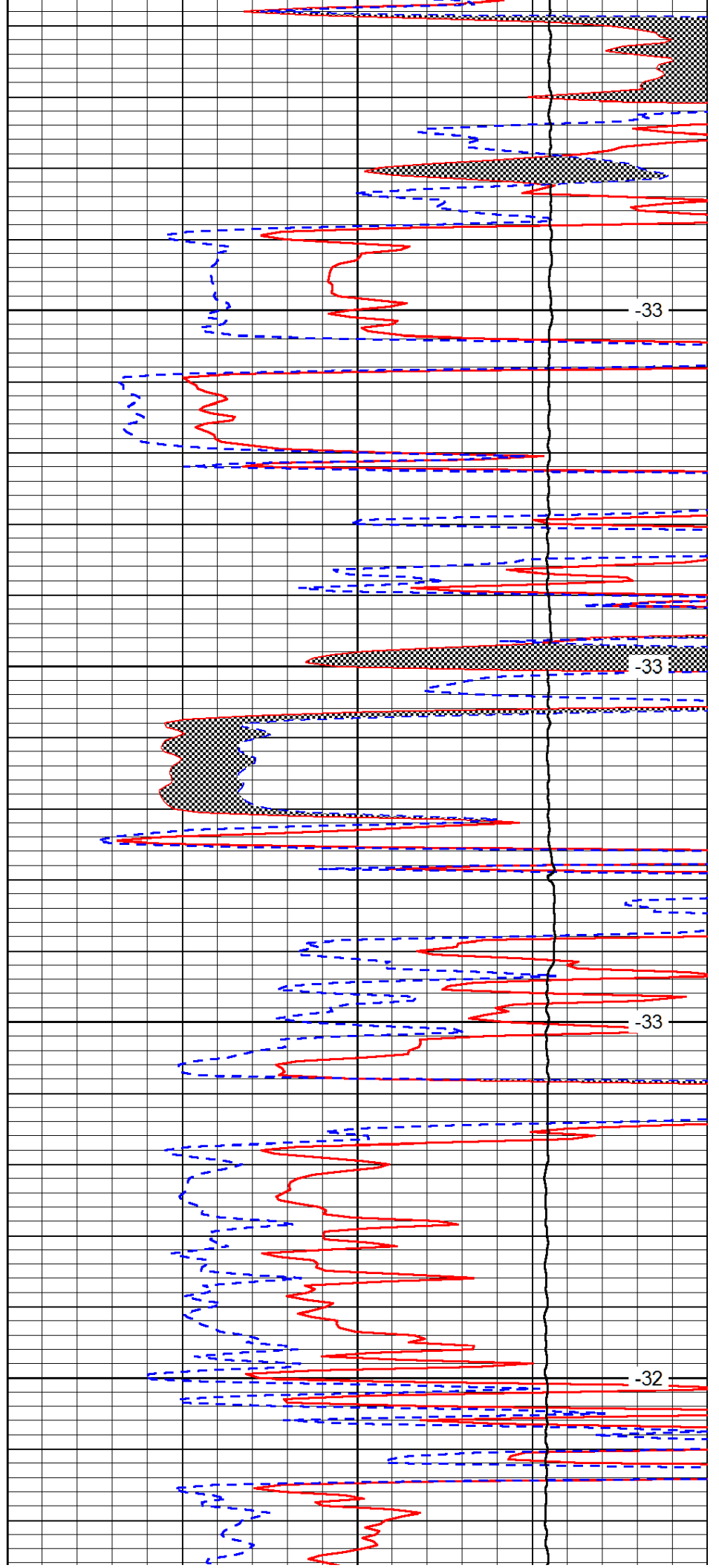


5050

5100

5150

5200

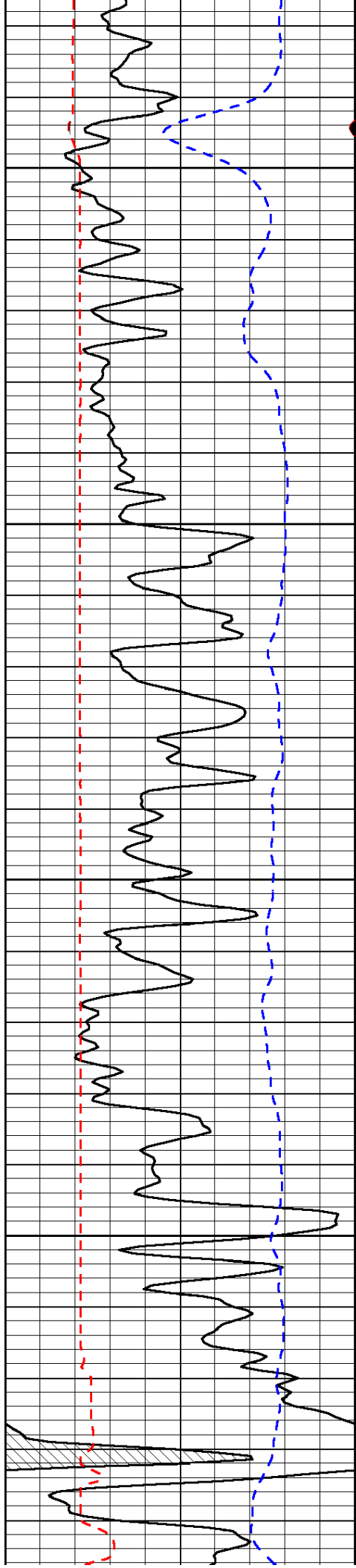


-33

-33

-33

-32

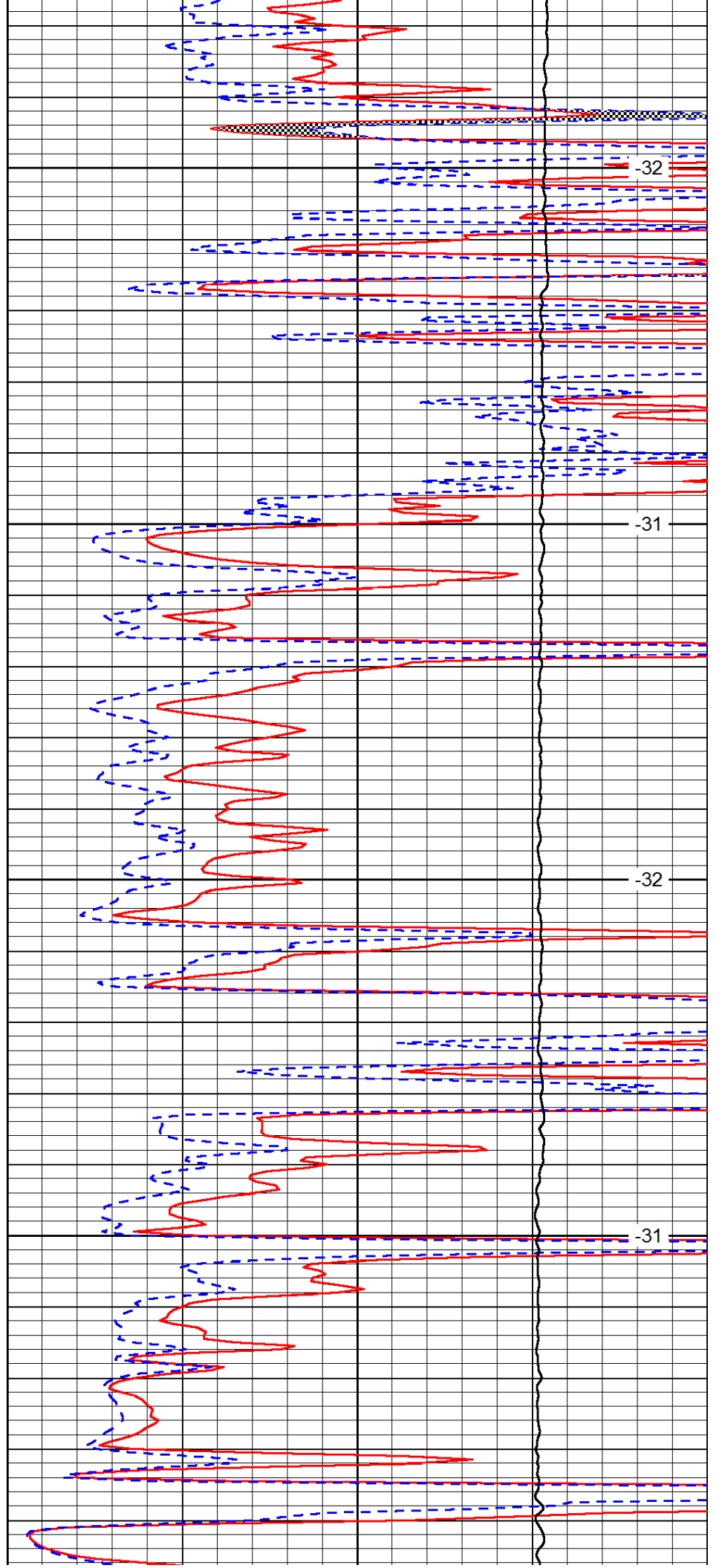


5250

5300

5350

5400

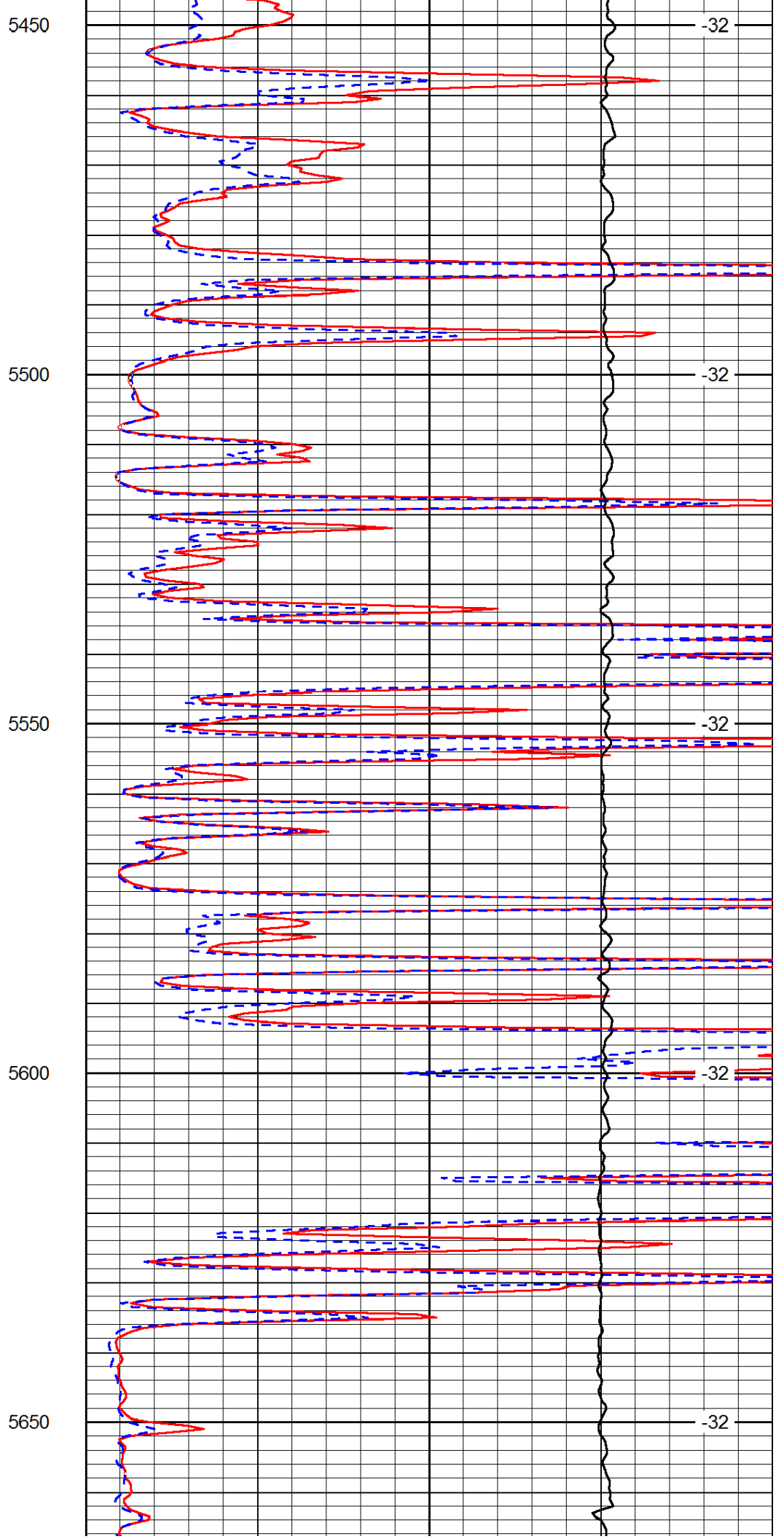
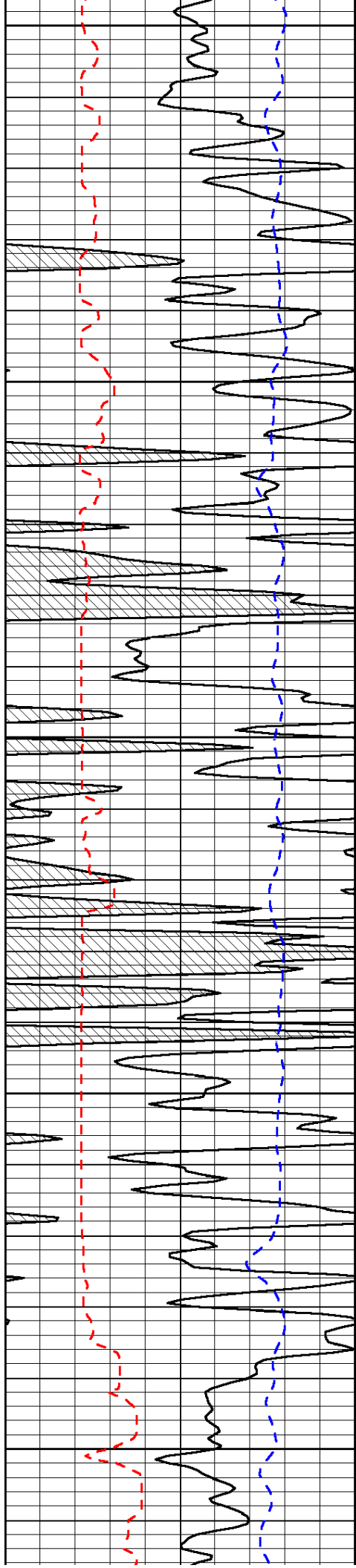


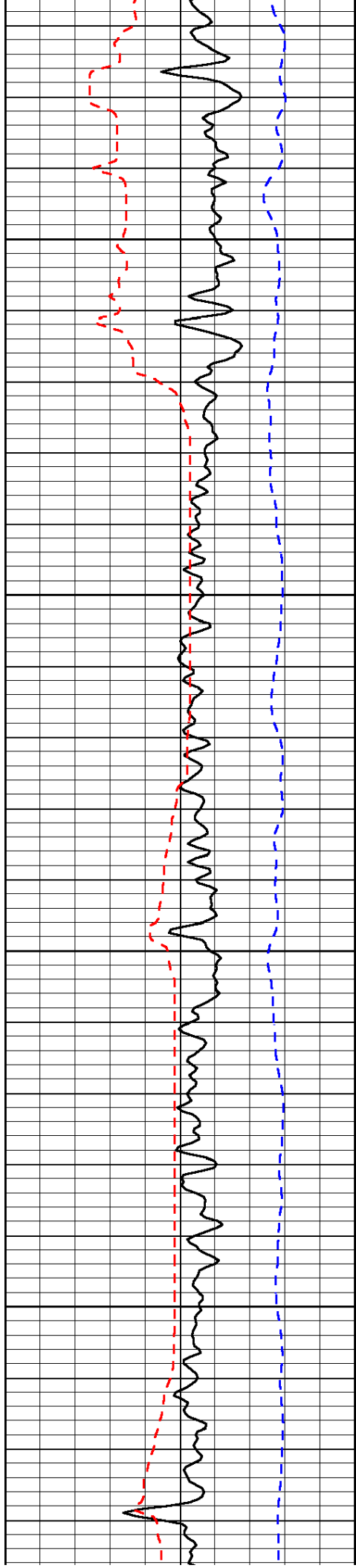
-32

-31

-32

-31



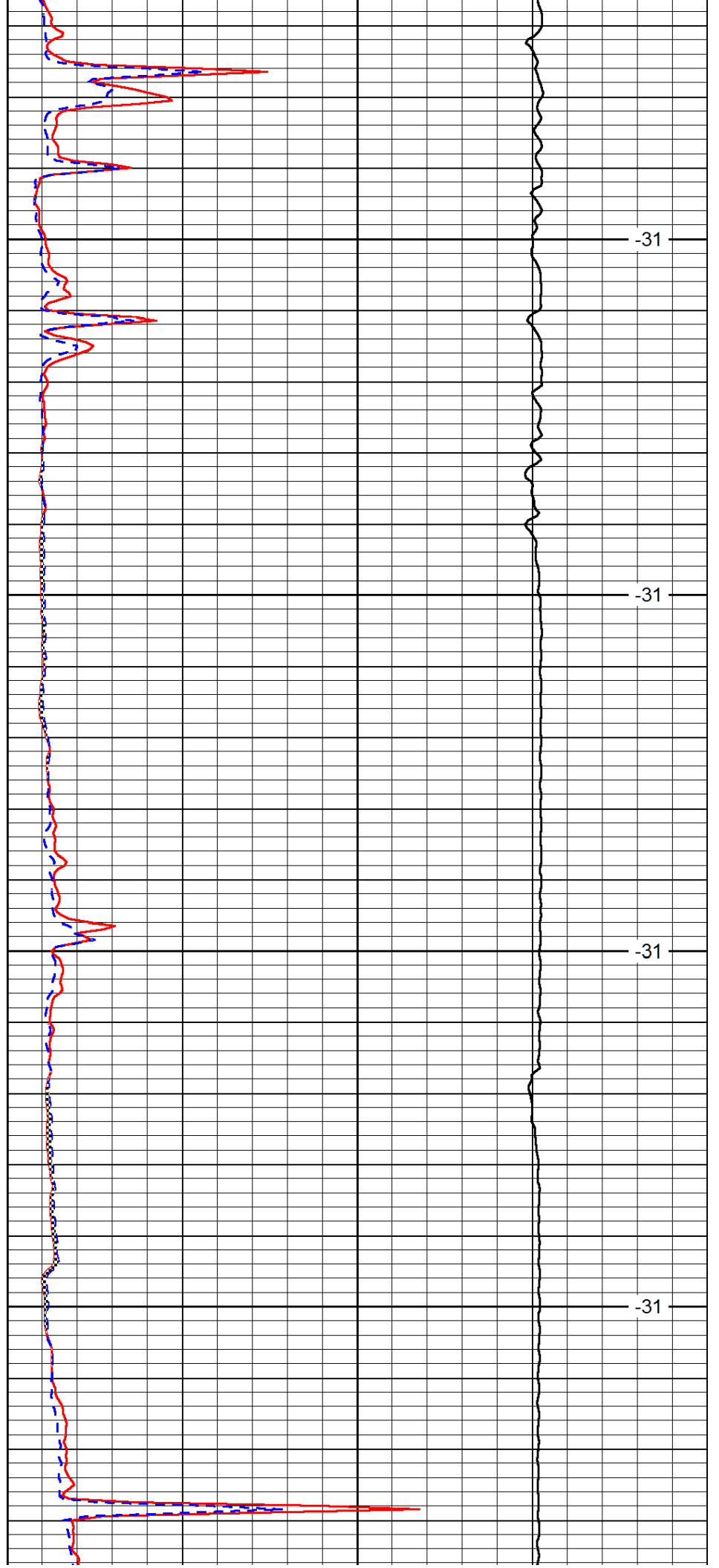


5700

5750

5800

5850

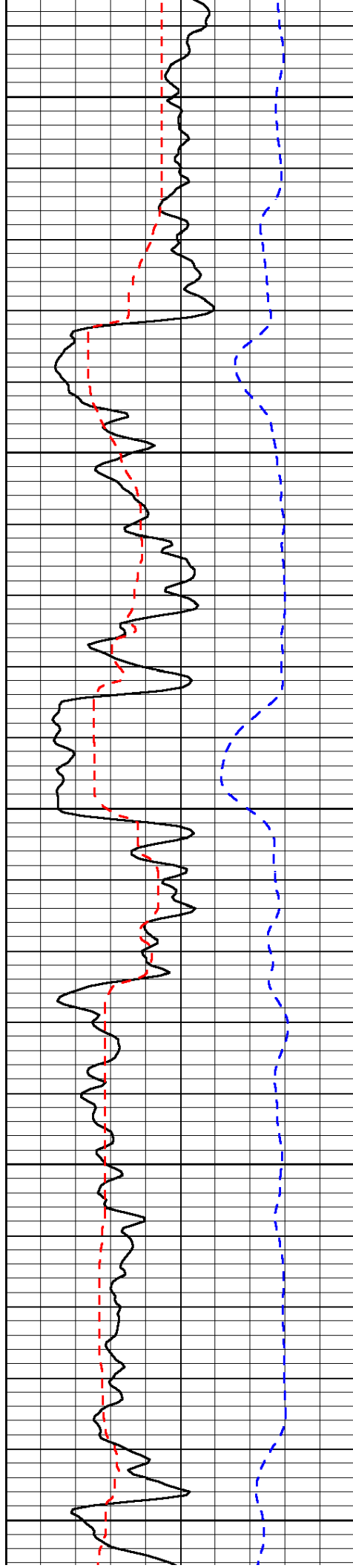


-31

-31

-31

-31



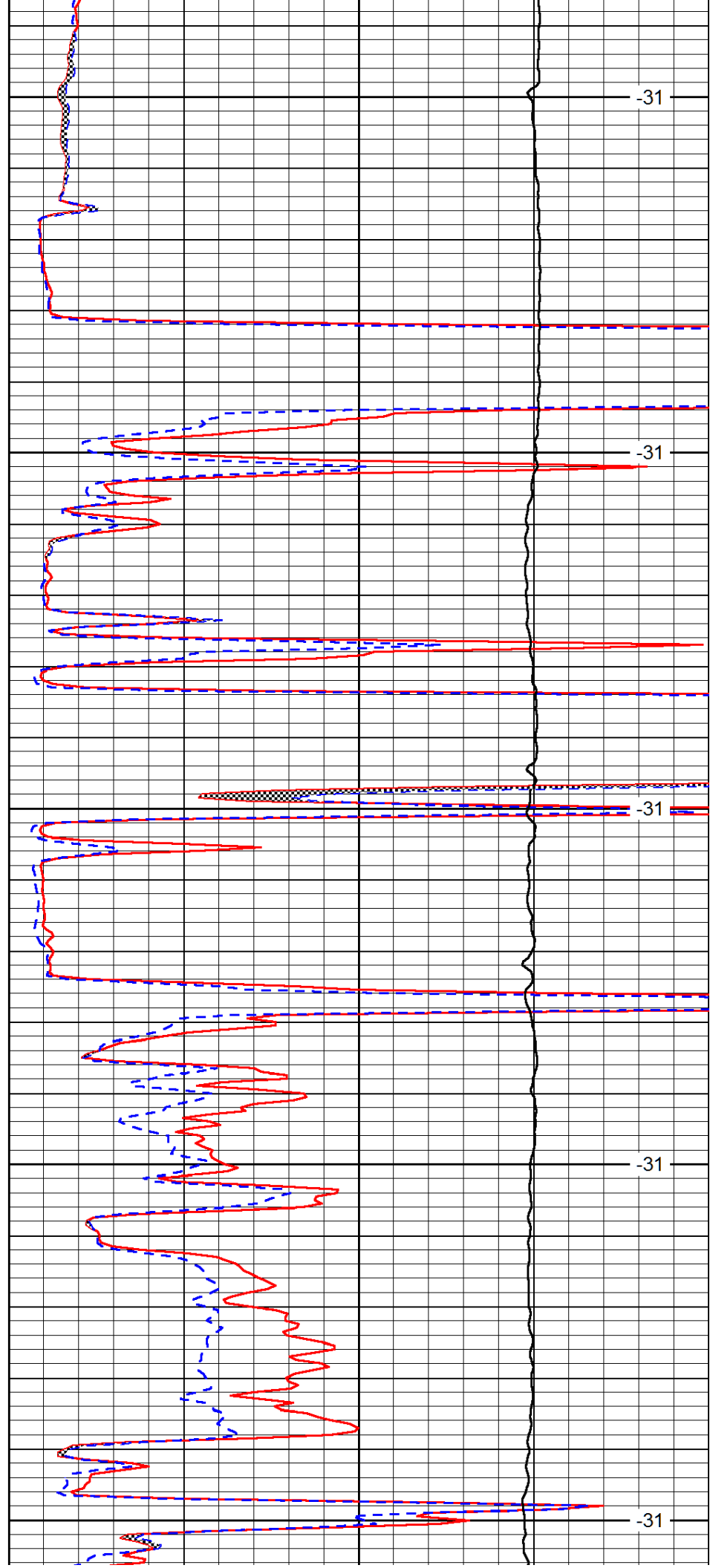
5900

5950

6000

6050

6100



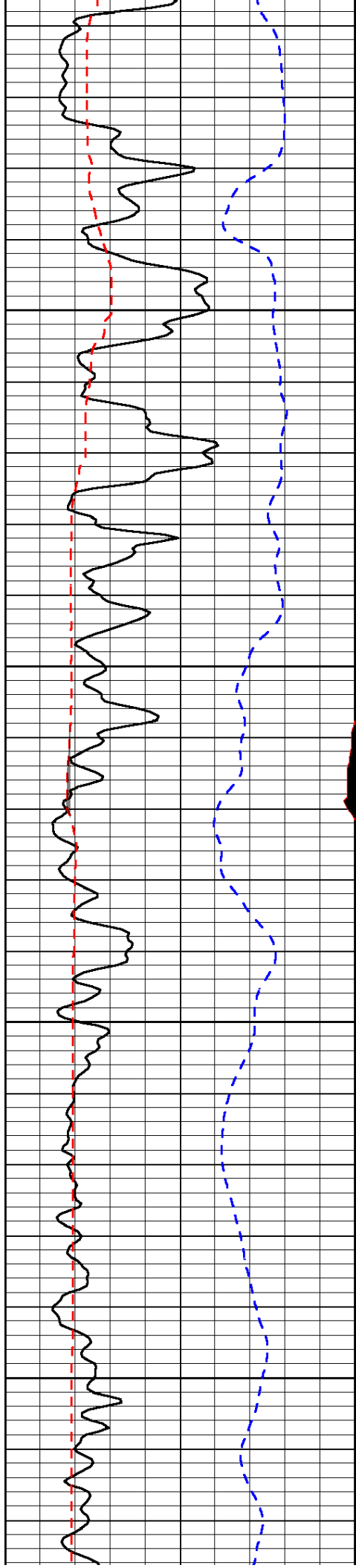
-31

-31

-31

-31

-31

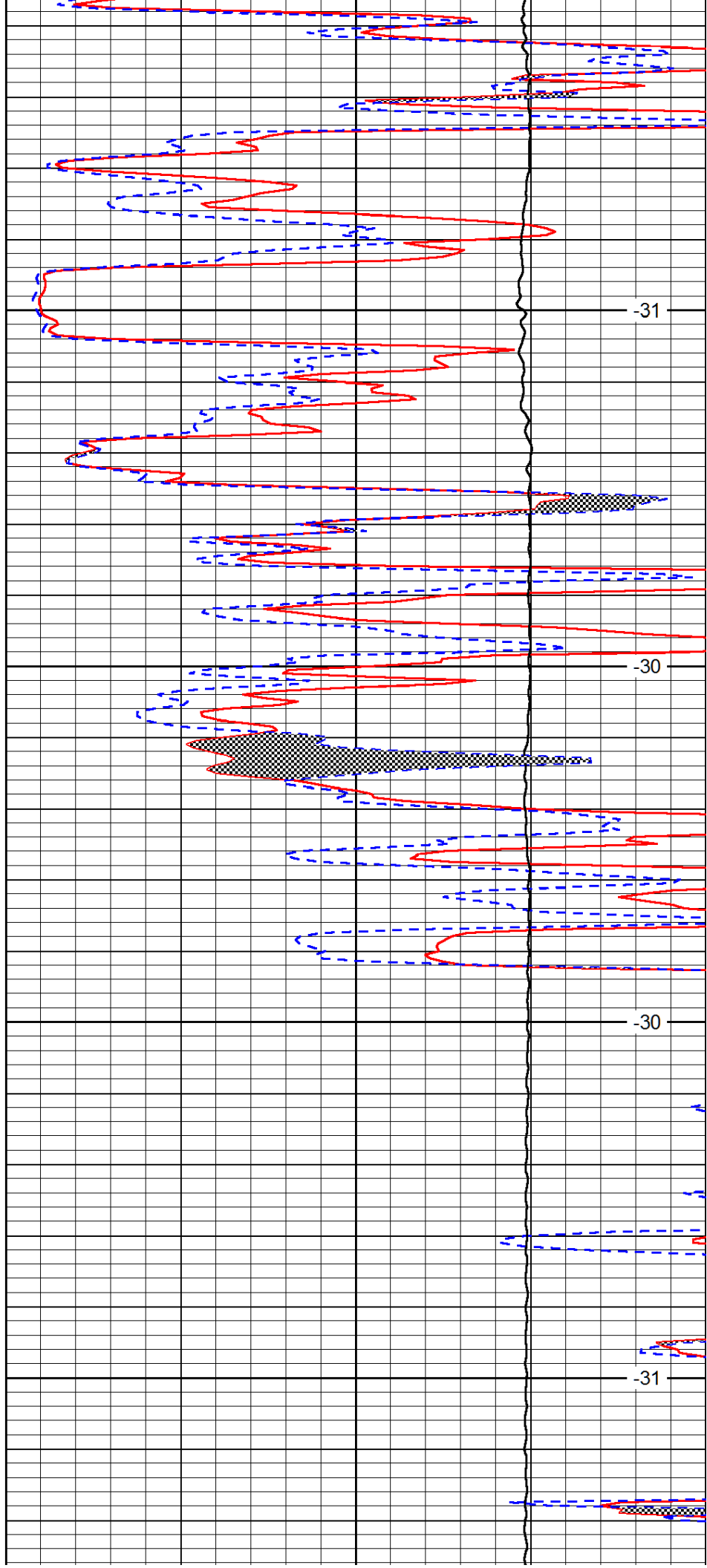


6150

6200

6250

6300

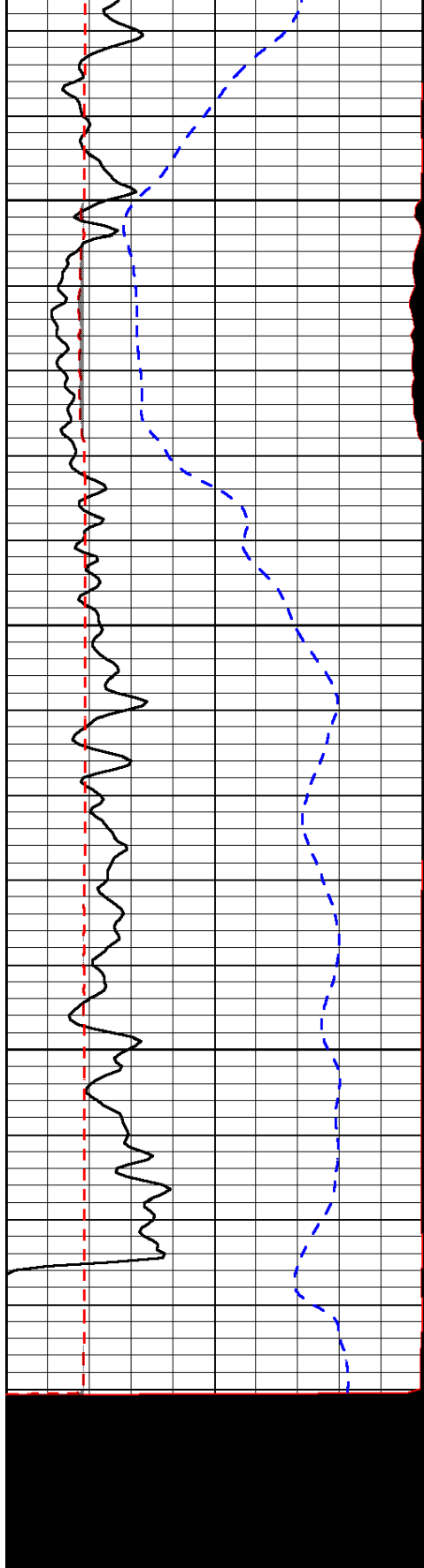


-31

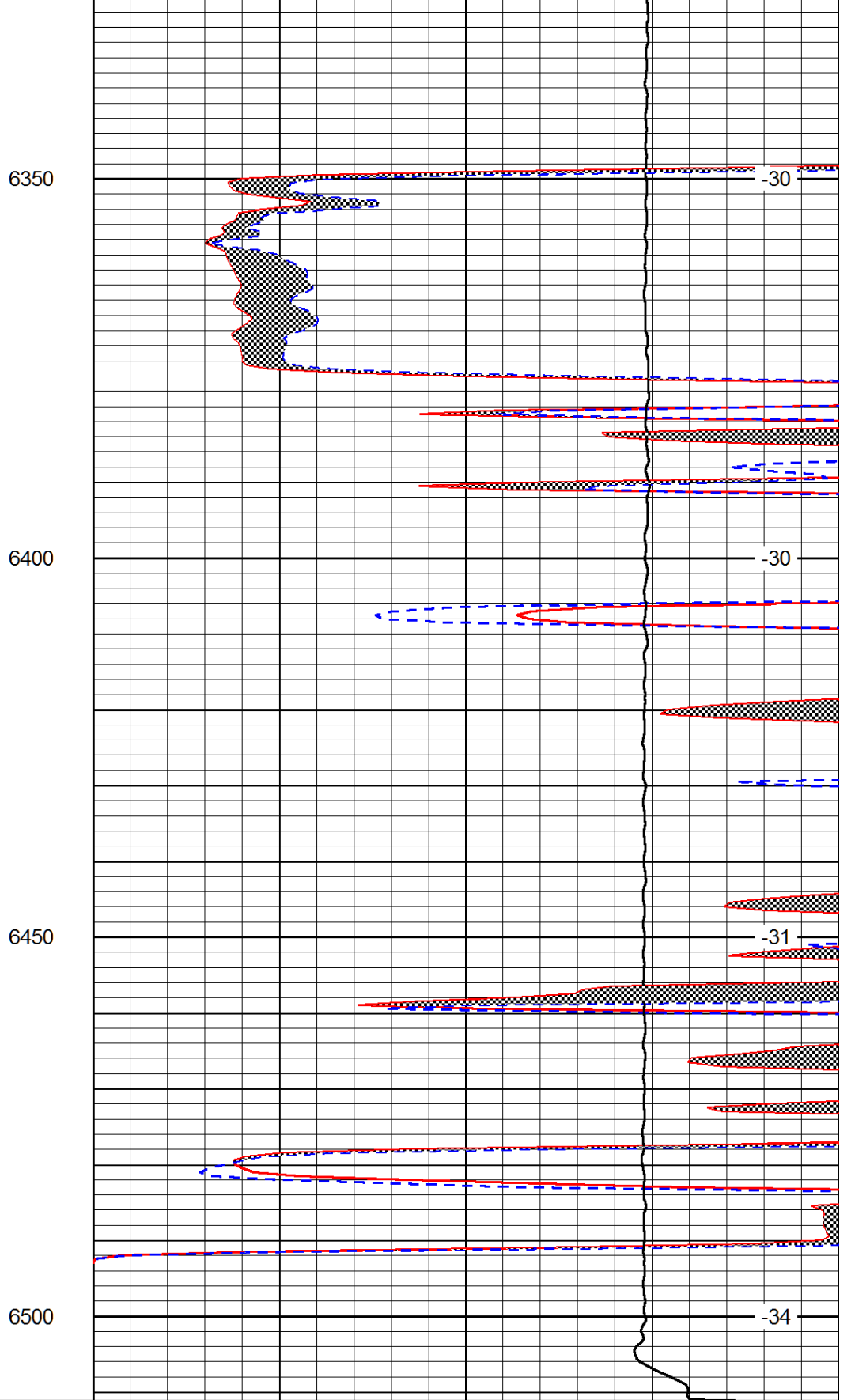
-30

-30

-31



0	Gamma Ray (GAPI)	150
6	MCAL (in)	16
2.875	Mud Cake (in)	7.875
-200	SP (mV)	0



0	Micro Inverse 1 X 1 (Ohm-m)	40
0	Micro Normal 2" (Ohm-m)	40
10000	Line Weight (lb)	0

LSPD
(ft/min)