



**GAMMA RAY
CEMENT BOND
COMPLETION LOG**

Company: POSTROCK ENERGY CORP.
Well: OLSON, RUBY A. #2-18
Field: CHEROKEE BASIN CBM

Company: POSTROCK ENERGY CORP.
Well: OLSON, RUBY A. #2-18
Field: CHEROKEE BASIN CBM
County: WILSON
State: KANSAS

Location: 919' FSL & 433' FWL
API #: 15-205-28146-00-00
Other Services: OPEN HOLE
Date: 4-29-2013

Company: POSTROCK ENERGY CORP.
Well: OLSON, RUBY A. #2-18
Field: CHEROKEE BASIN CBM
County: WILSON
State: KANSAS

Permanant Datum: TWP 28S RGE 16E
Log Measured From: Q1
Elevation: 1037'
Date: 5-03-2013
Run Number: 1 NW
Depth Chier: 1220'Top Log Interval: 1211.9'Bottom Logged Interval: 1208.9'Fluid Level: FULL

Type Fluid: WATER
Production Casing: 5" @ TD
Max. Recorded Temp.:
Estimated Cement Top:
Calculated Cement Top:
Amount & Type Cement:
Drilling Contractor:
Equipment Number: 105
Location: GORNALETR

Recorded By:
Witnessed By:

Company: POSTROCK ENERGY CORP.
Well: OLSON, RUBY A. #2-18
Field: CHEROKEE BASIN CBM
County: WILSON
State: KANSAS

Company: POSTROCK ENERGY CORP.
Well: OLSON, RUBY A. #2-18
Field: CHEROKEE BASIN CBM
County: WILSON
State: KANSAS

Company: POSTROCK ENERGY CORP.
Well: OLSON, RUBY A. #2-18
Field: CHEROKEE BASIN CBM
County: WILSON
State: KANSAS

<<< Fold Here >>>

All interpretations are opinions based on inferences from electrical or other measurements and we cannot and do not guarantee the accuracy or correctness of any interpretation, and we shall not, except in the case of gross or willful negligence on our part, be liable or responsible for any loss, costs, damages, or expenses incurred or sustained by anyone resulting from any interpretation made by any of our officers, agents or employees. These interpretations are also subject to our general terms and conditions set out in our current Price Schedule.

Comments

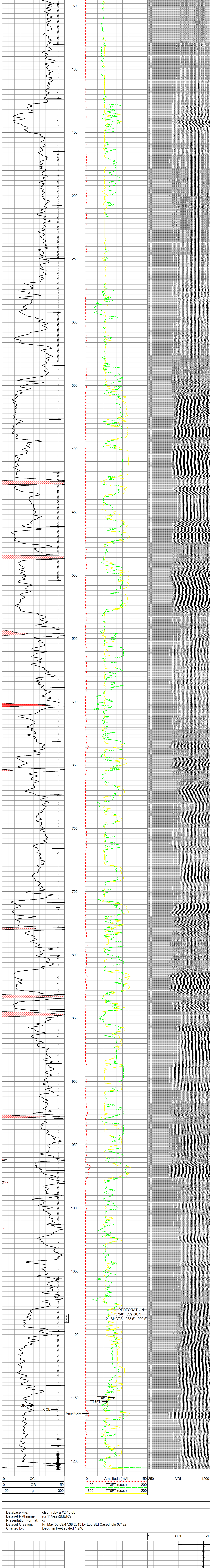
THANK YOU

Sensor	Offset (ft)	Schematic	Description	Len (ft)	OD (in)	Wt (lb)
			tekco tekco cent.	2.17	1.69	5.00
			CBLTEKCO-TEKCO2RCVR (TEKCO169) 111/16" TEKCO 2 RCVR DELWARE	9.75	1.69	50.00
WVF3FT	6.58					
WVF5FT	5.58					
WVFCAL	2.17					
WVFSYNC	2.17					
			tekco tekco cent.	2.17	1.69	5.00

Dataset: olson ruby a #2-18.db: field/well/run/1/pass2MERGE
Total Length: 14.08 ft
Total Weight: 60.00 lb
O.D.: 1.69 in

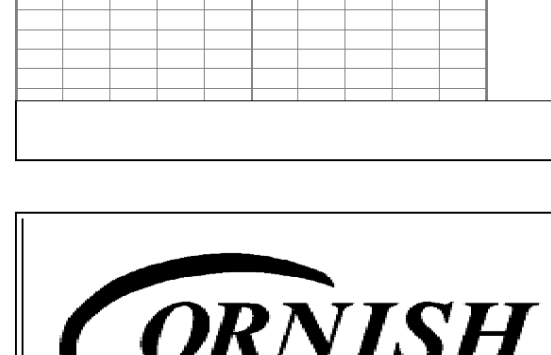
Database File: olson ruby a #2-18.db
Dataset Pathname: pass2MERGE
Presentation Format: scbl_dr
Dataset Creation: Fri May 03 09:25:19 2013
Charted by: Depth in Feet scaled 1.240

9	CCL	-1	0	Amplitude (mV)	150	250	VDL	1200
0	GR	150	1100	TT3FT (usec)	200			
150	gr	300	1800	TT5FT (usec)	200			



Database File: olson ruby a #2-18.db
Dataset Pathname: run11/pass2MERG
Presentation Format: ccl
Dataset Creation: Fri May 03 09:47:38 2013 by Log Std Casedhole 07122
Charted by: Depth in Feet scaled 1.240

9	CCL	-1	1100	NEW PERFS
9	CCL	-1		



Company: POSTROCK ENERGY CORP.
Well: OLSON, RUBY A. #2-18
Field: CHEROKEE BASIN CBM
County: WILSON SECTION 2 TWP 28S RGE 16E
State: KANSAS
Date: 5-03-2013