



Pioneer Energy Services

# Borehole Compensated Sonic Log

API No. 15-163-24132-00-00

Company: Great Plains Energy, Inc.  
Well: Odle #2-8  
Field: Wildcat  
County: Rooks  
State: Kansas

Location: NE SE SW SW  
335' FSL / 1100' FWL  
Sec: 8 Twp: 7S Rge: 18W

Ground Level: Kelly Bushing  
Elevation: 1939  
Log Measured From: Kelly Bushing  
5 Ft. Above Perm. Datum  
Drilling Measured From: Kelly Bushing

Other Services  
CNL/CDL  
MEL/DIL

Elevation  
K.B. 1944  
D.F. 1939  
G.L. 1939

Date	7/18/2013
Run Number	Two
Type Log	BHC Sonic
Depth Driller	3515
Depth Logger	3514
Bottom Logged Interval	3403
Top Logged Interval	200
Type Fluid In Hole	Chemical
Salinity, PPM CL	2700
Density	9.1
Level	Full
Max. Rec. Temp. F	111
Operating Rig Time	4 Hours
Equipment -- Location	17 Hays
Recorded By	R. Barnhart
Witnessed By	Mike Madcharo

Borehole Record		Casing Record				
Run No.	Bit From	To	Size	Wgt.	From	To
One	12.25	00	220	8.625	23#	00
Two	7.875	220	TD			220

<<< Fold Here >>>

All interpretations are opinions based on inferences from electrical or other measurements and we cannot and do not guarantee the accuracy or correctness of any interpretation, and we shall not, except in the case of gross or willful negligence on our part, be liable or responsible for any loss, costs, damages, or expenses incurred or sustained by anyone resulting from any interpretation made by any of our officers, agents or employees. These interpretations are also subject to our general terms and conditions set out in our current Price Schedule.

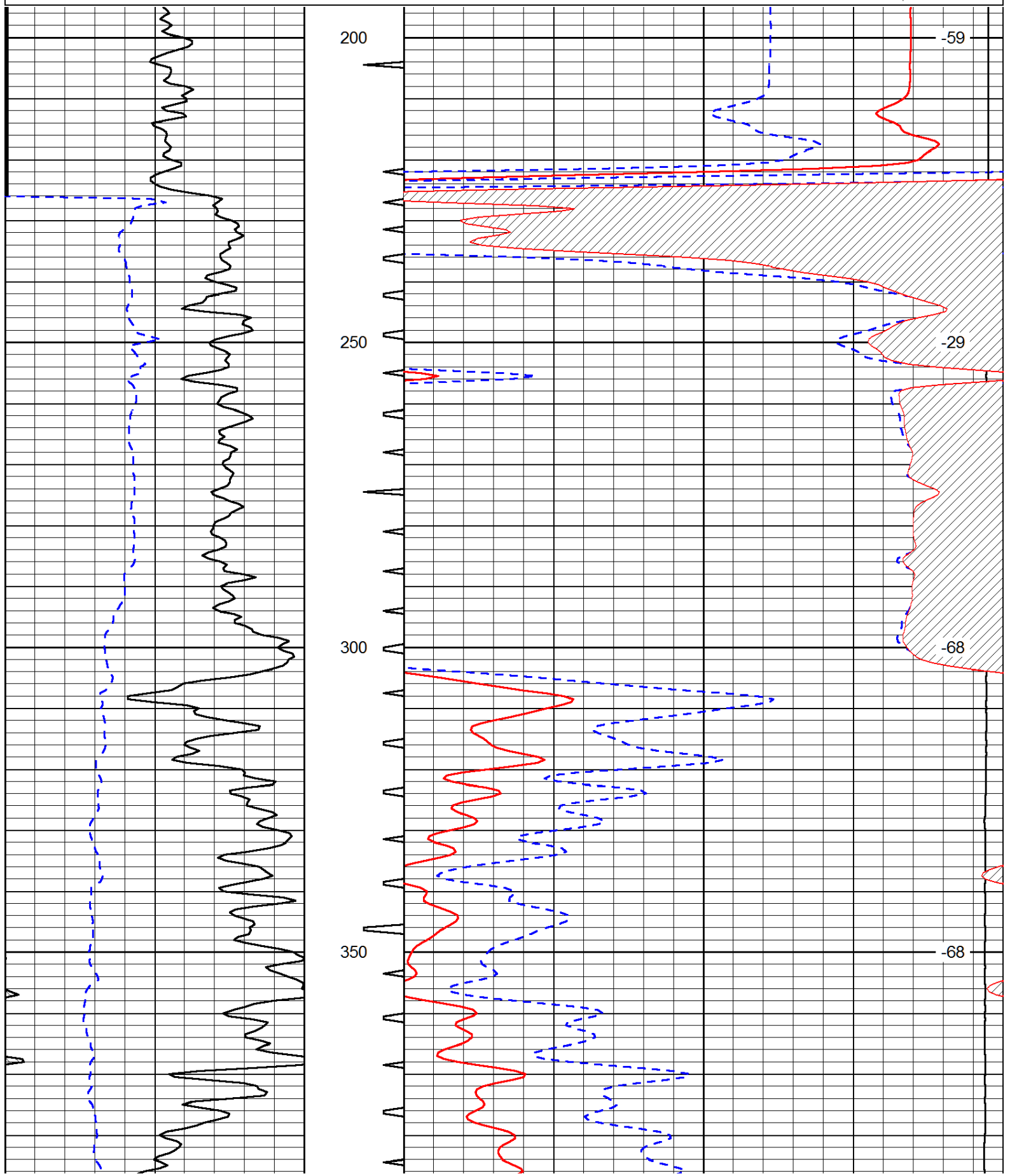
Comments

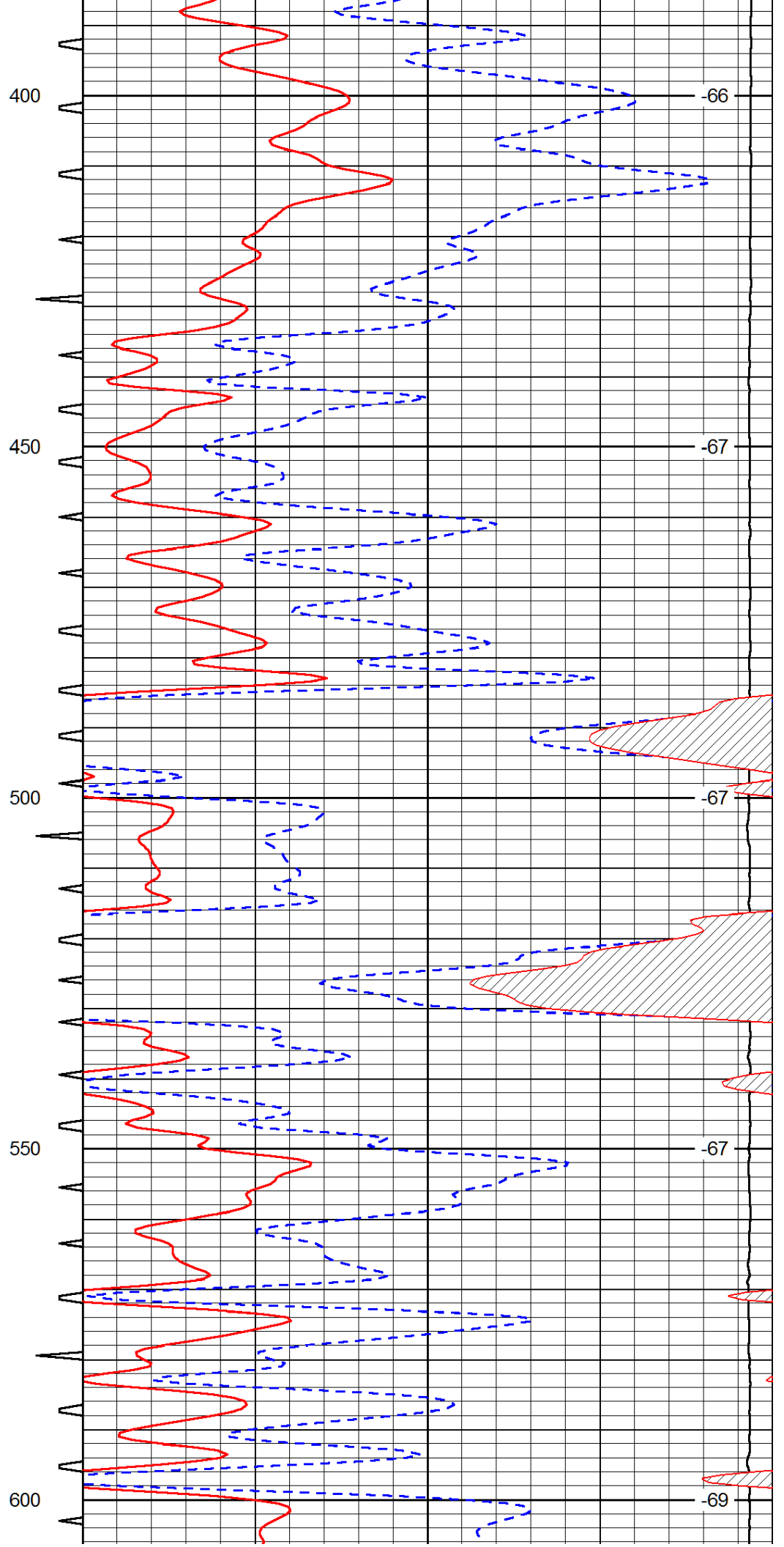
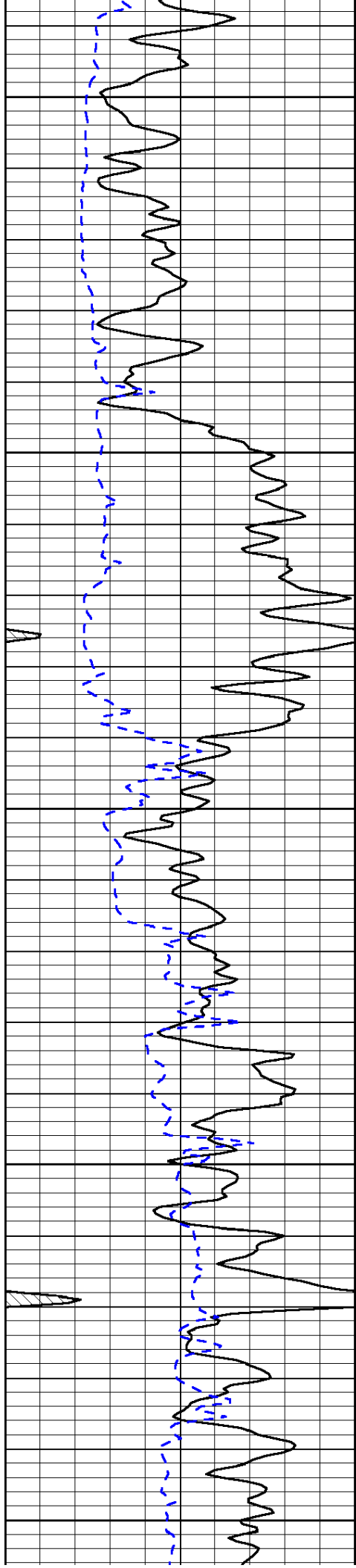
Thank you for using Log-Tech, Inc.  
(785) 625-3858

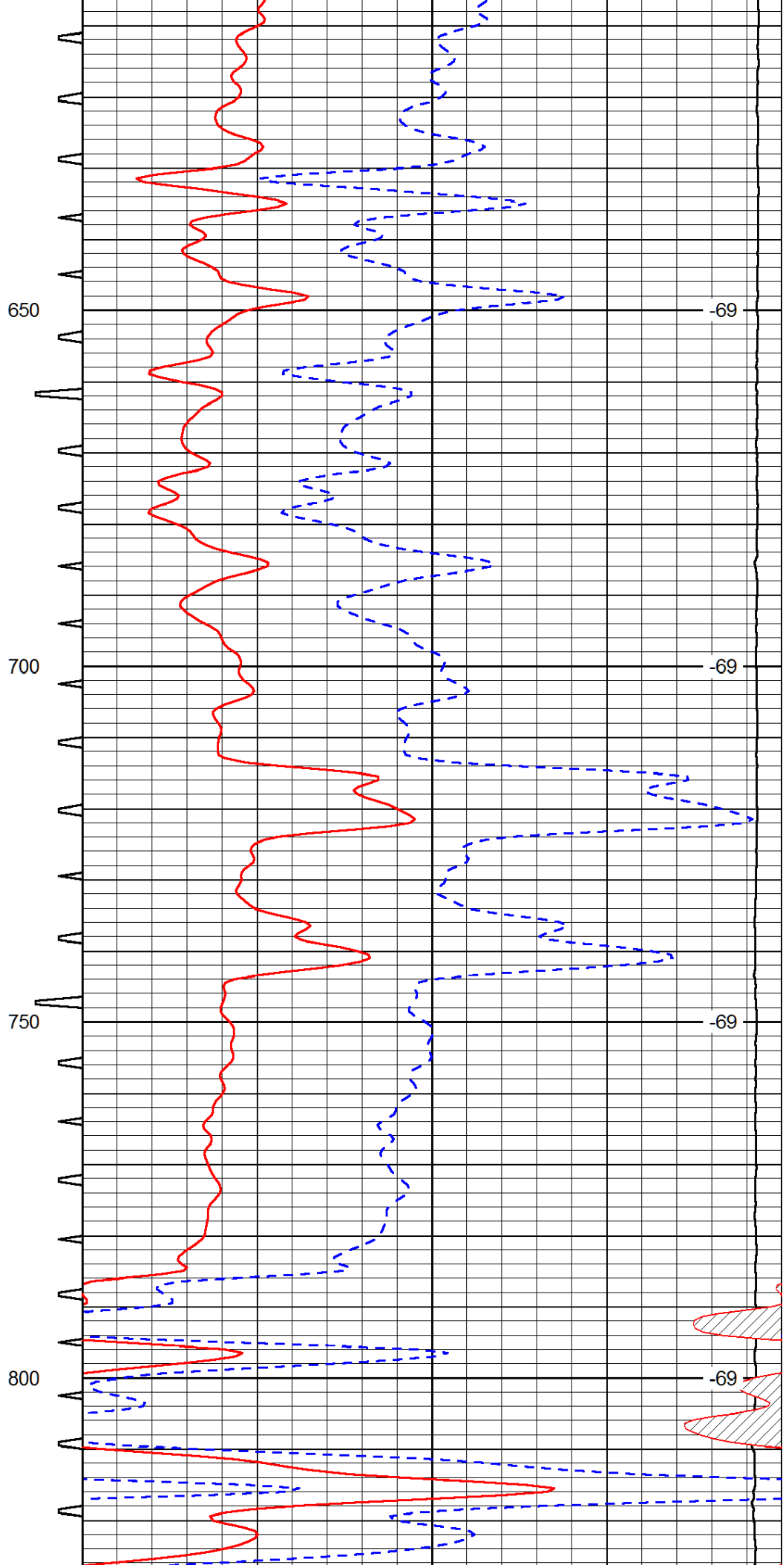
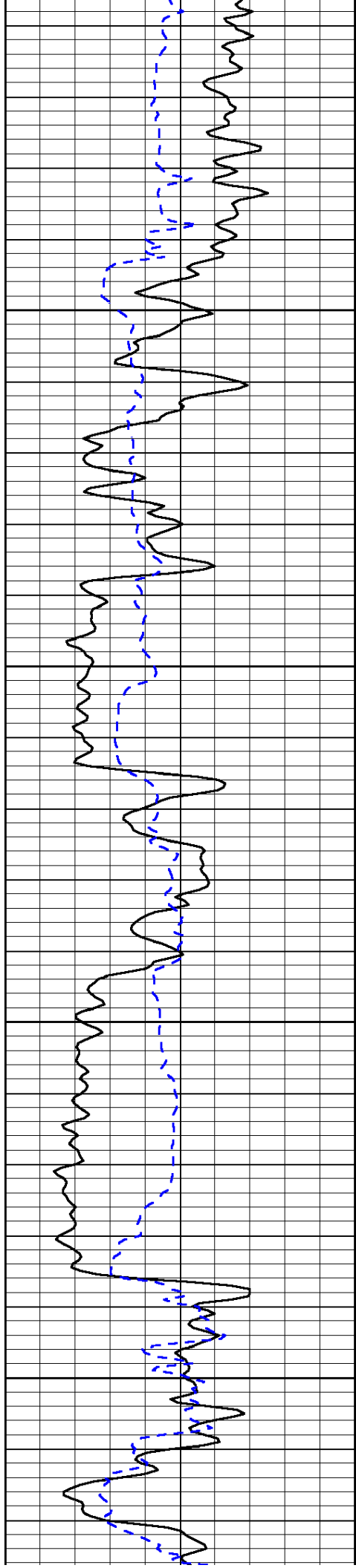
Stockton, KS:  
5W to 14 Rd., 2N thru CG, E into

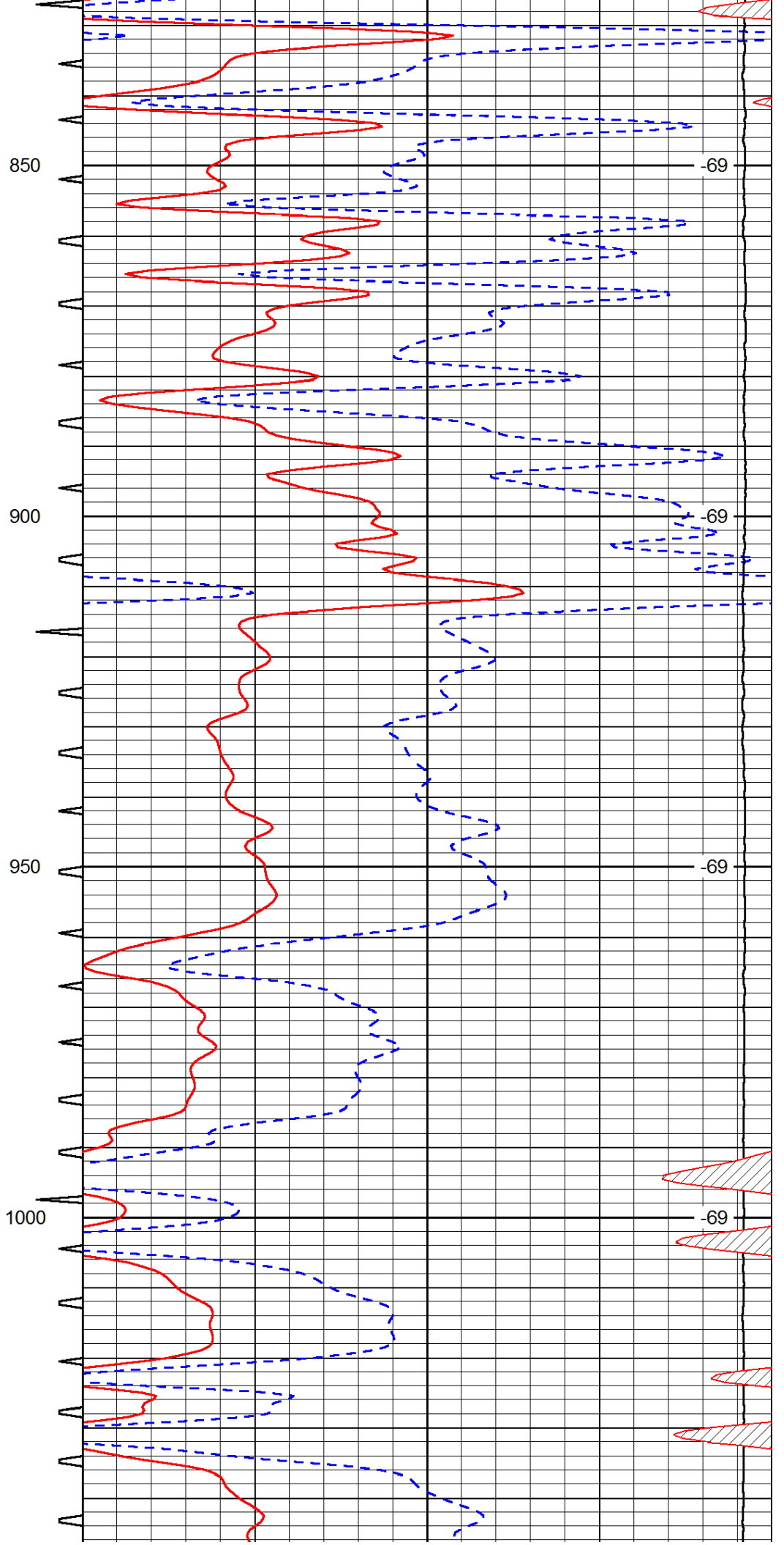
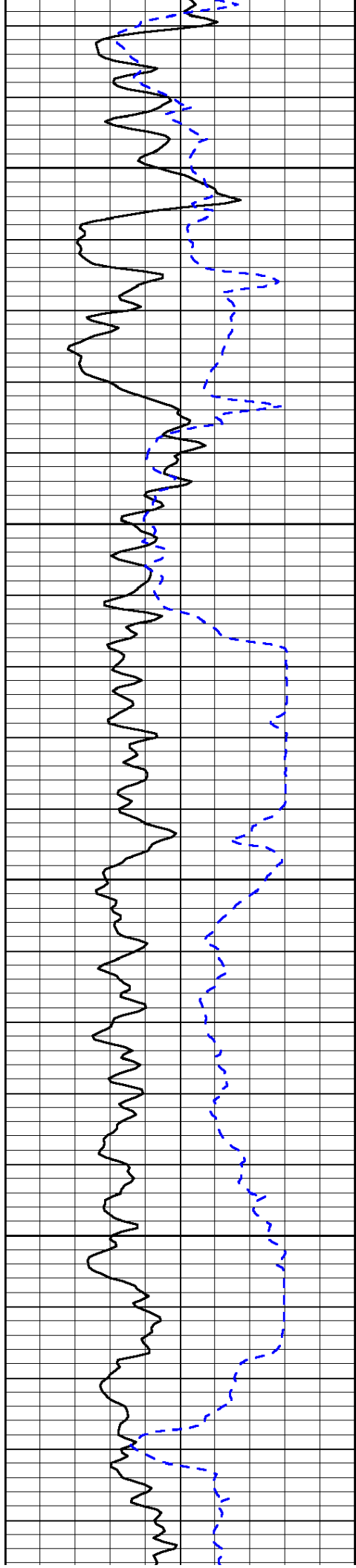
Database File: greatplains\_hd.db  
Dataset Pathname: dil/gpmain  
Presentation Format: sonic  
Dataset Creation: Thu Jul 18 17:39:28 2013  
Charted by: Depth in Feet scaled 1:240

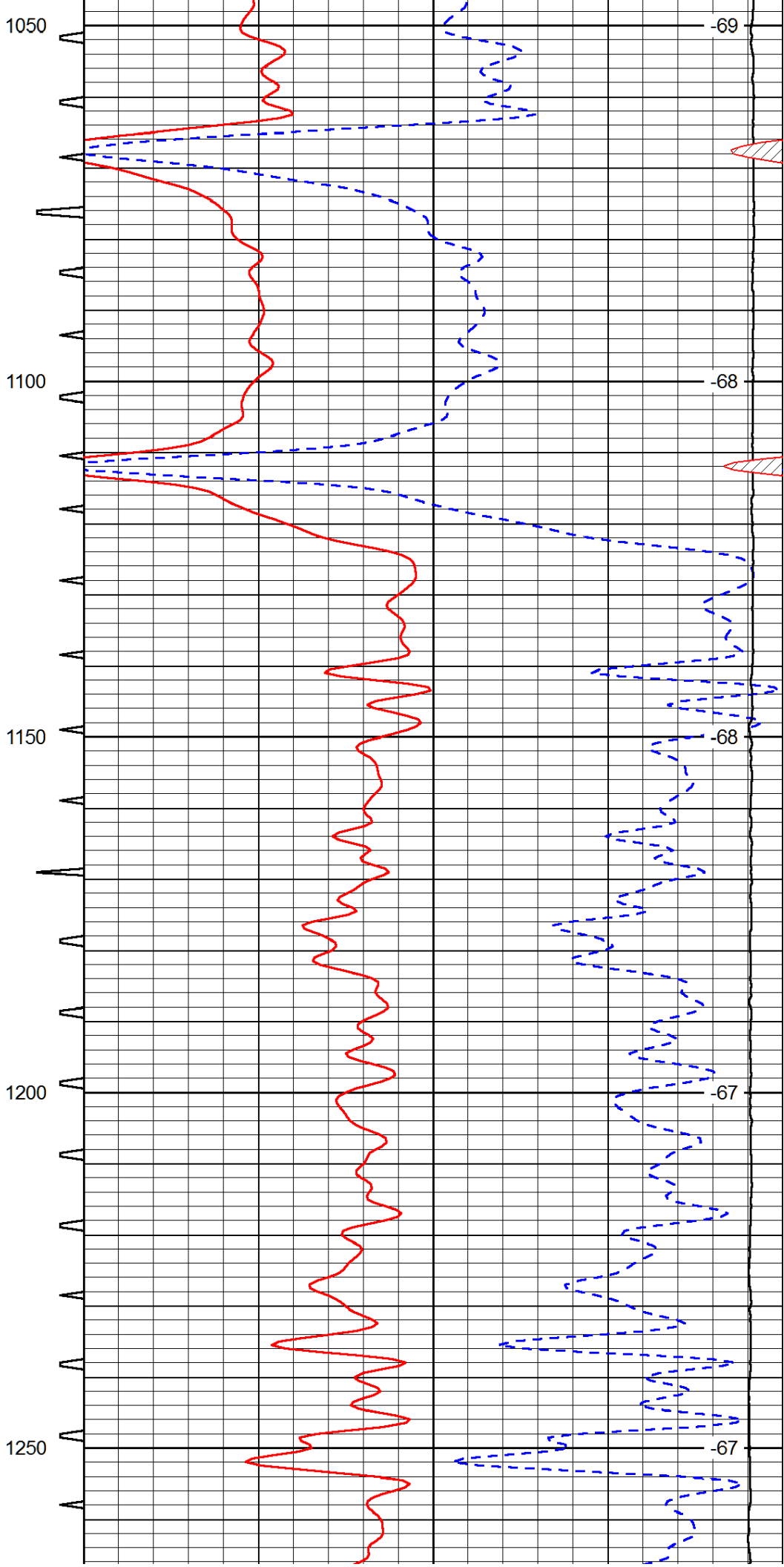
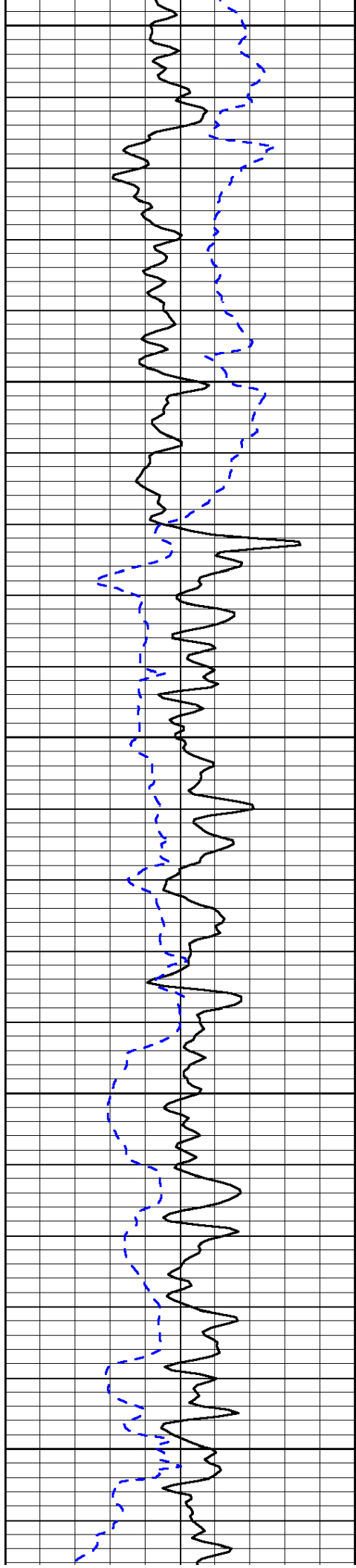
0	Gamma Ray (GAPI)	150	Sonic Int	140	Delta Time (usec/ft) (usec/ft)	40
150	Gamma Ray (GAPI)	300	5 (msec) 0	30	Sonic Porosity (pu)	-10
6	dCAL (in)	16		15000	LTEN (lb) (lb)	0
						LSPD (ft/min)

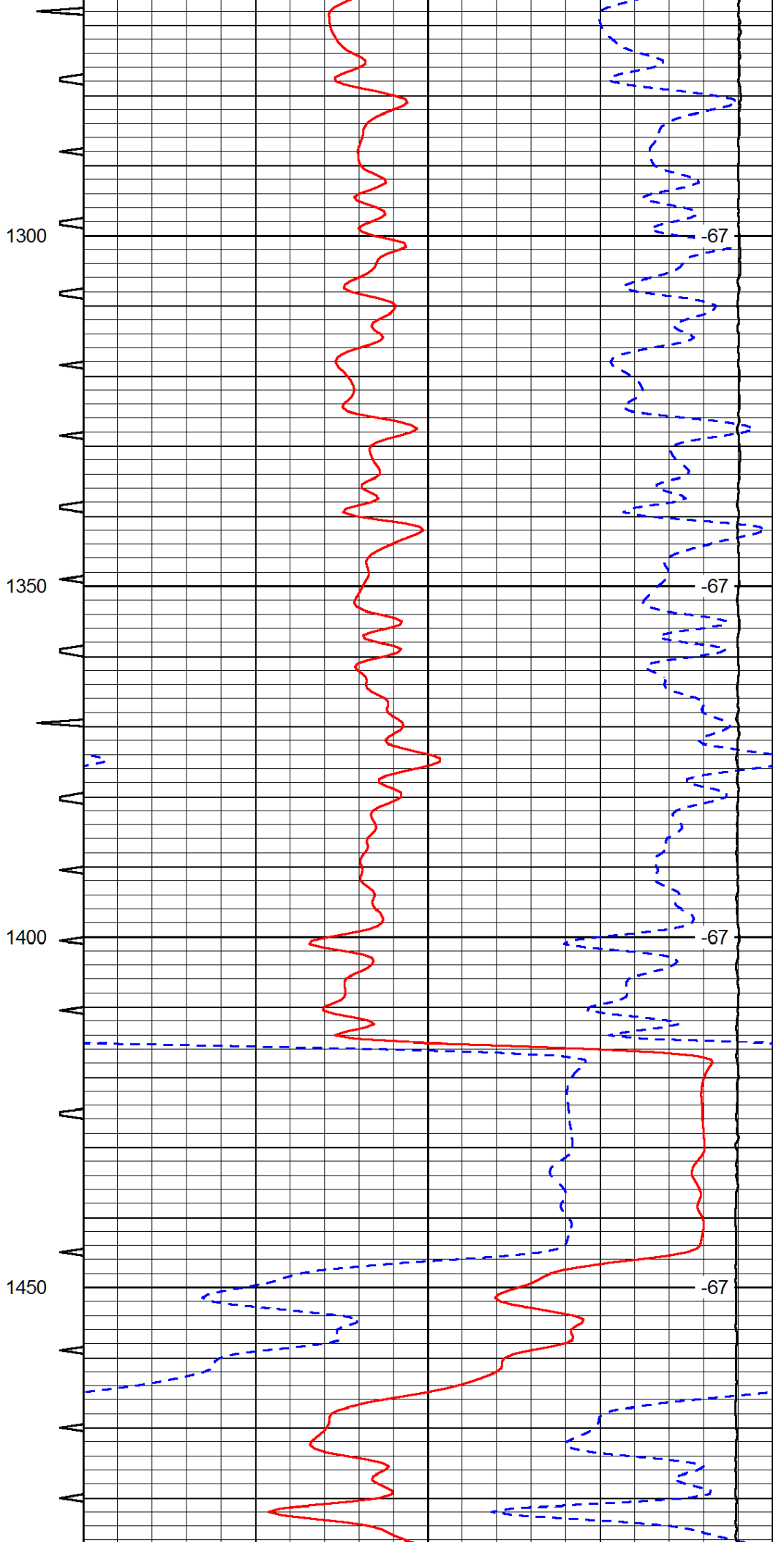
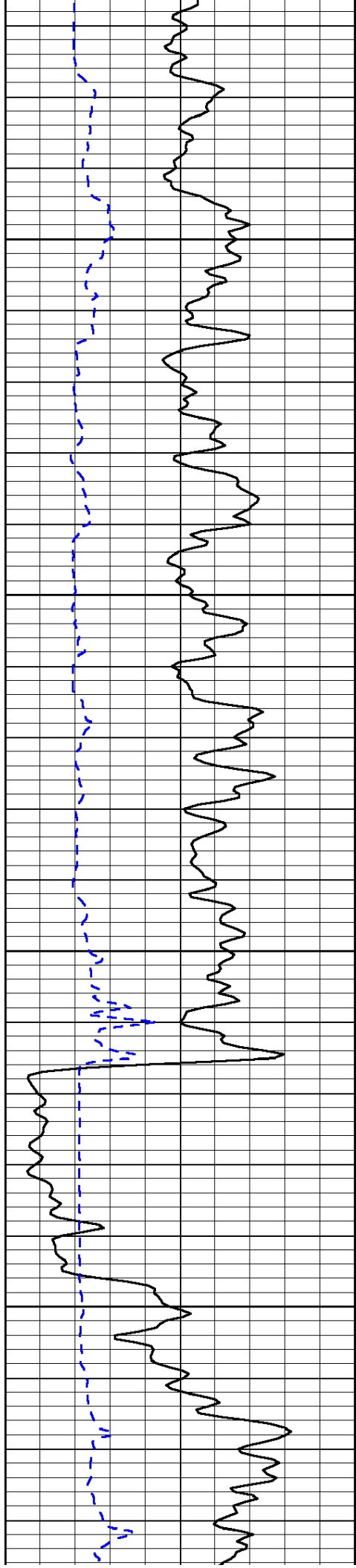


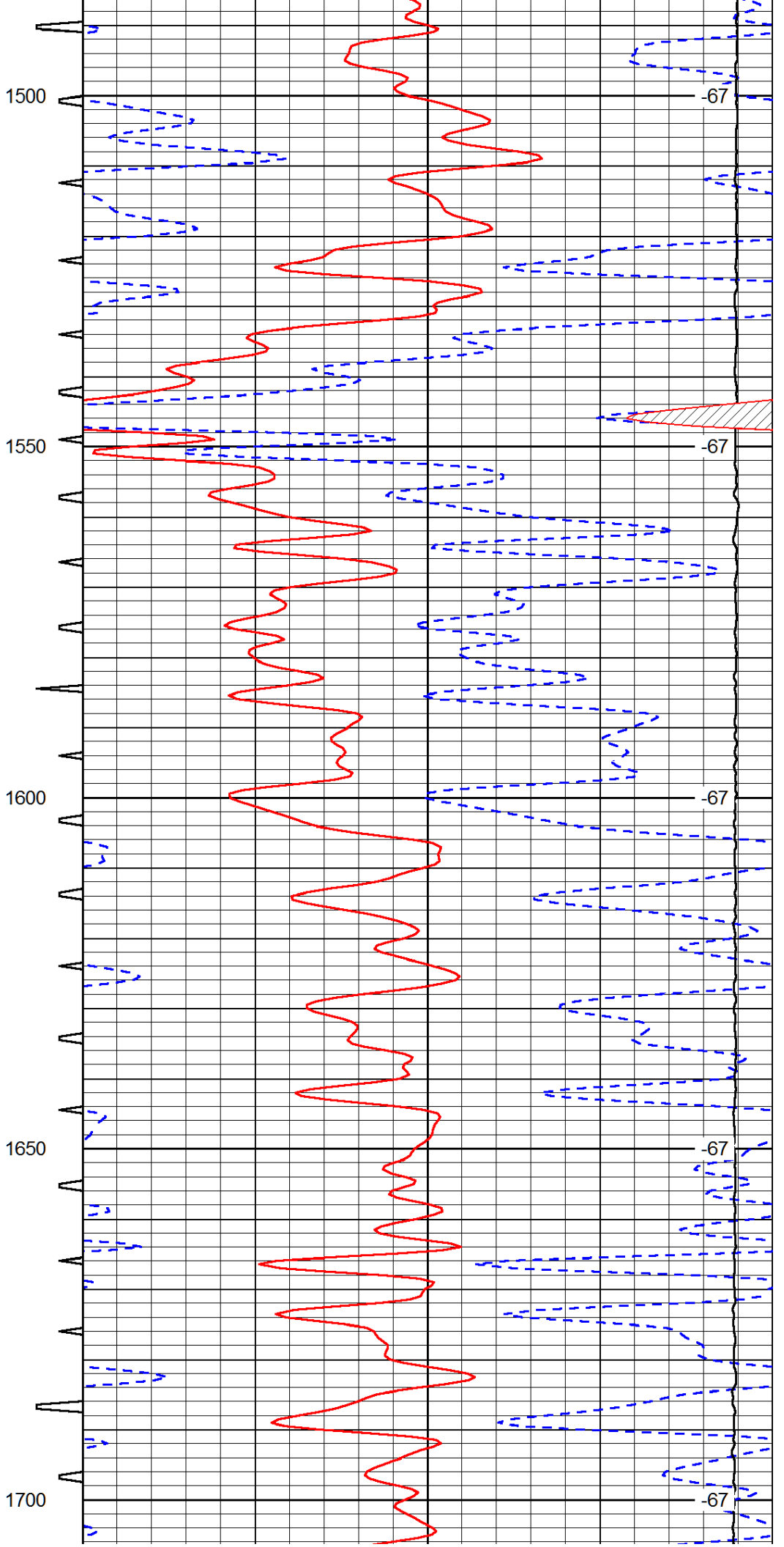
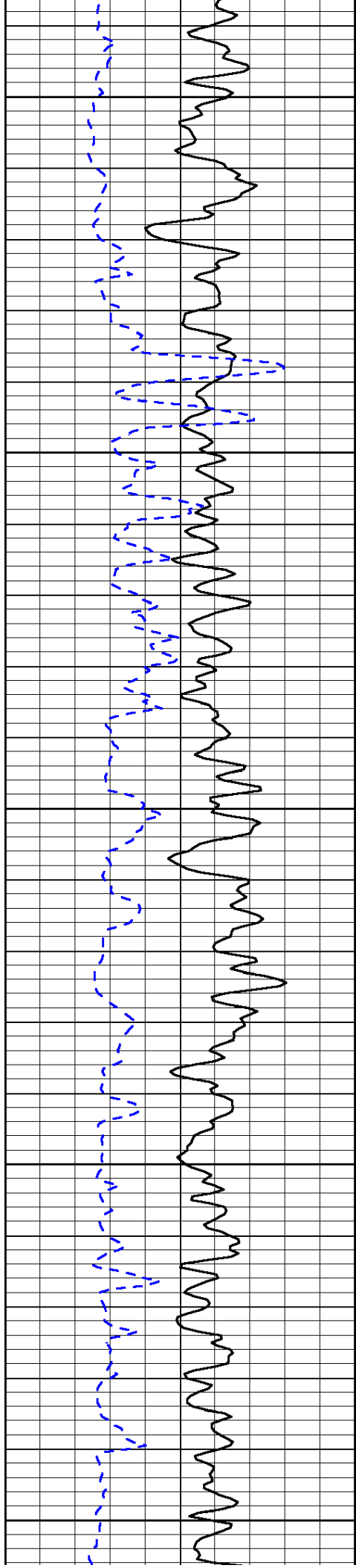


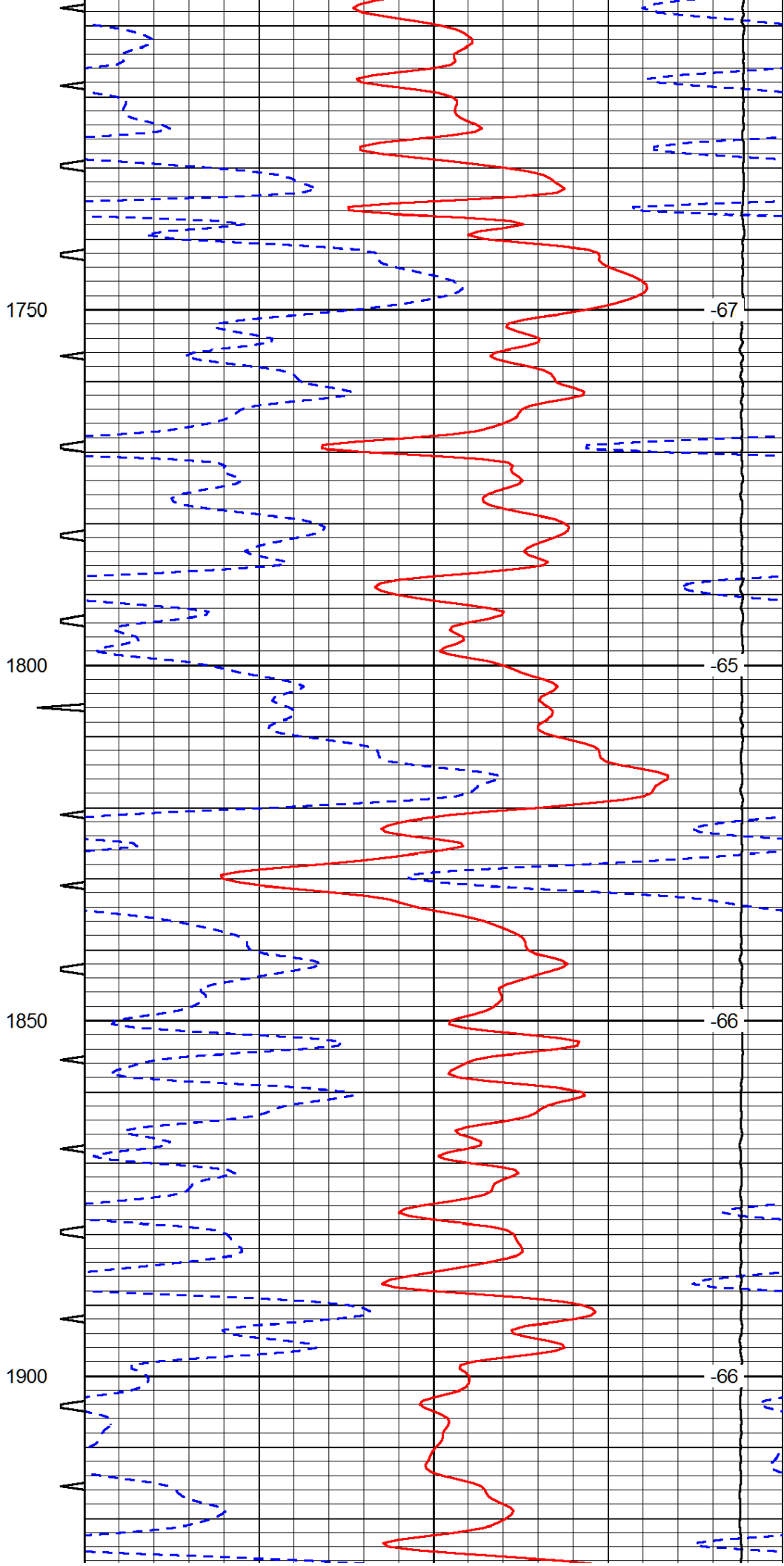
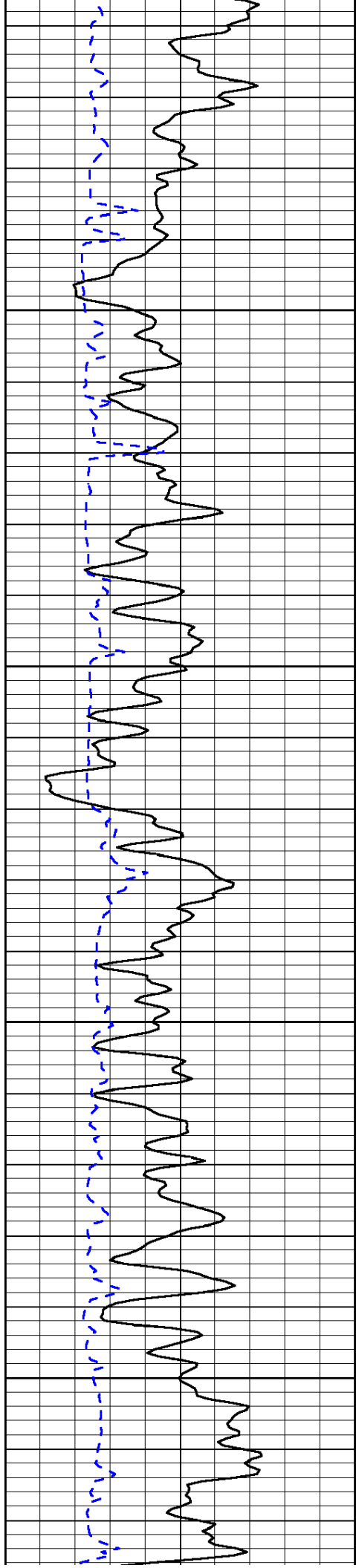


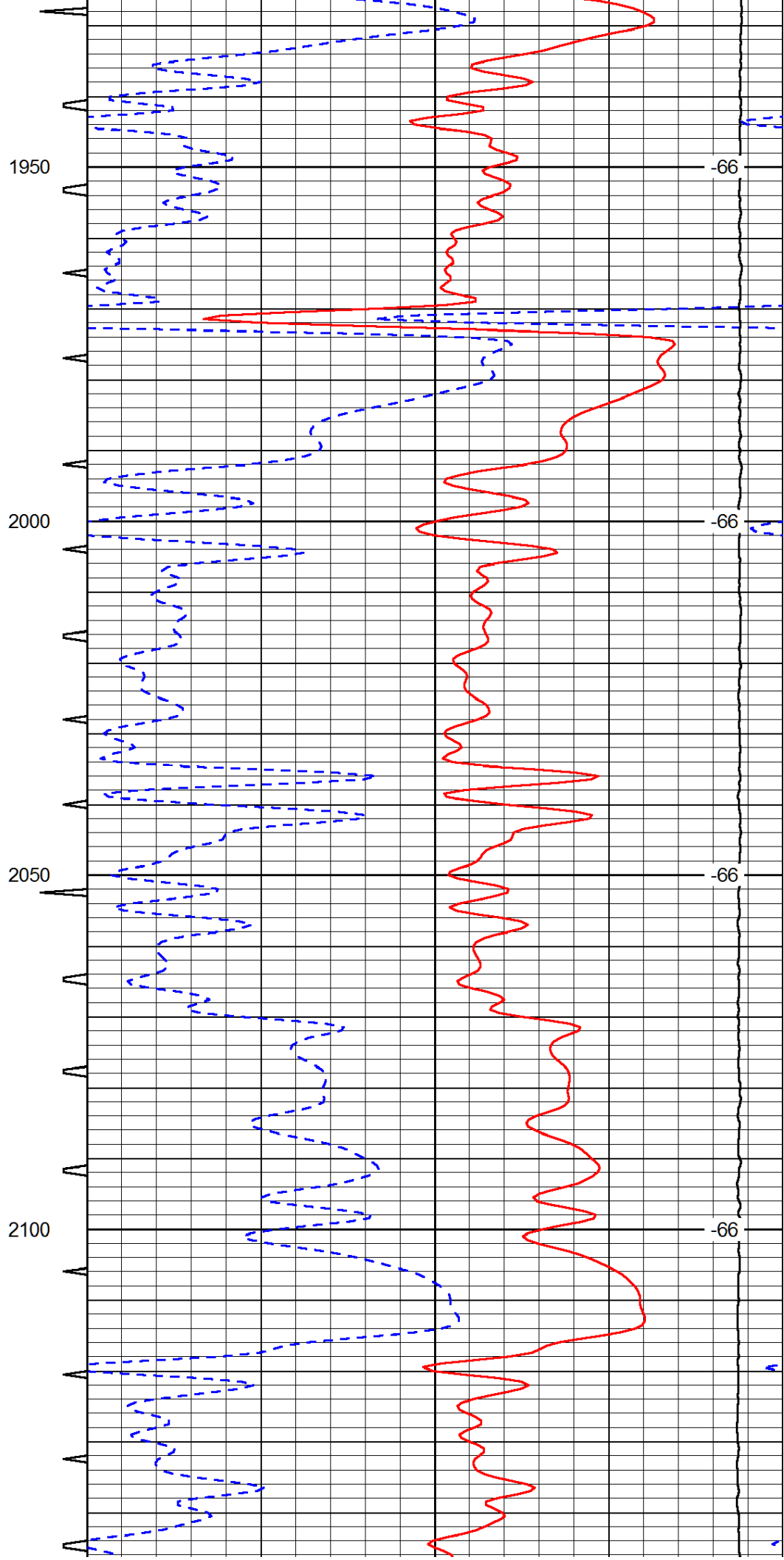
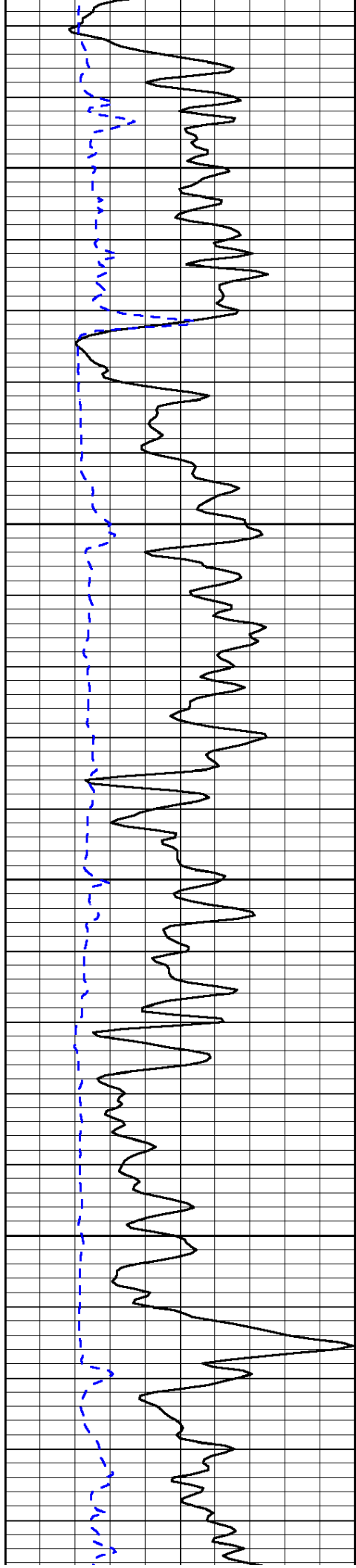


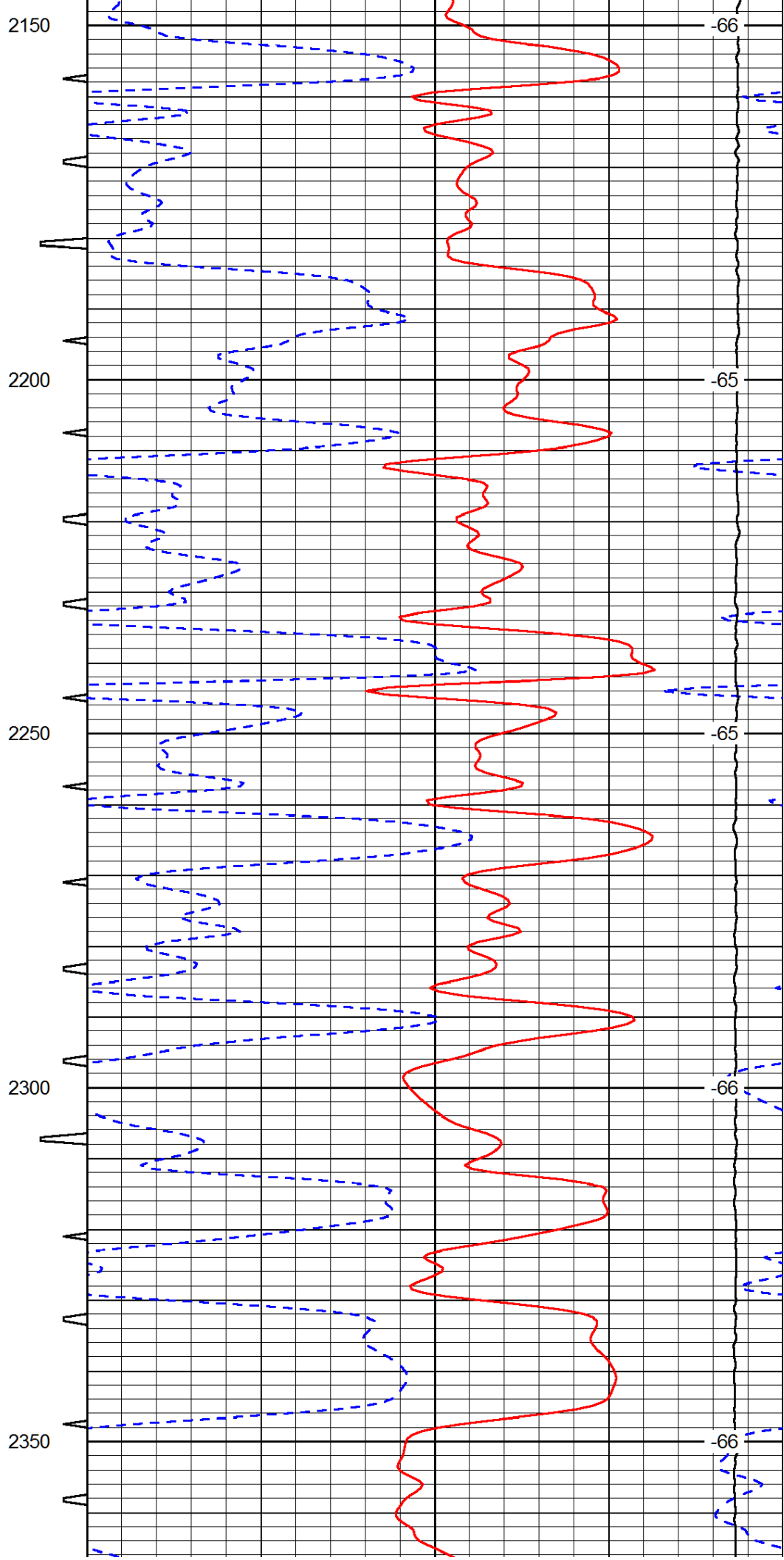
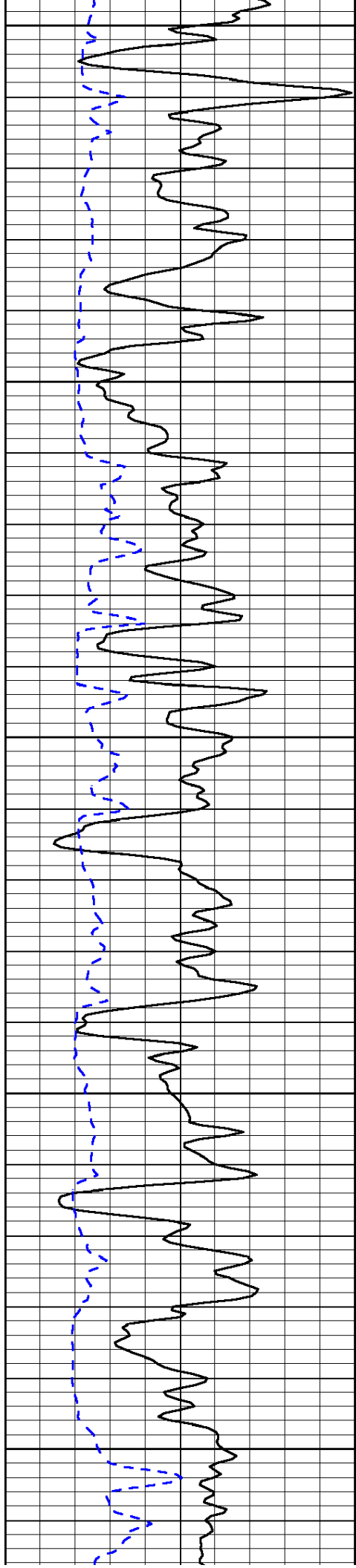


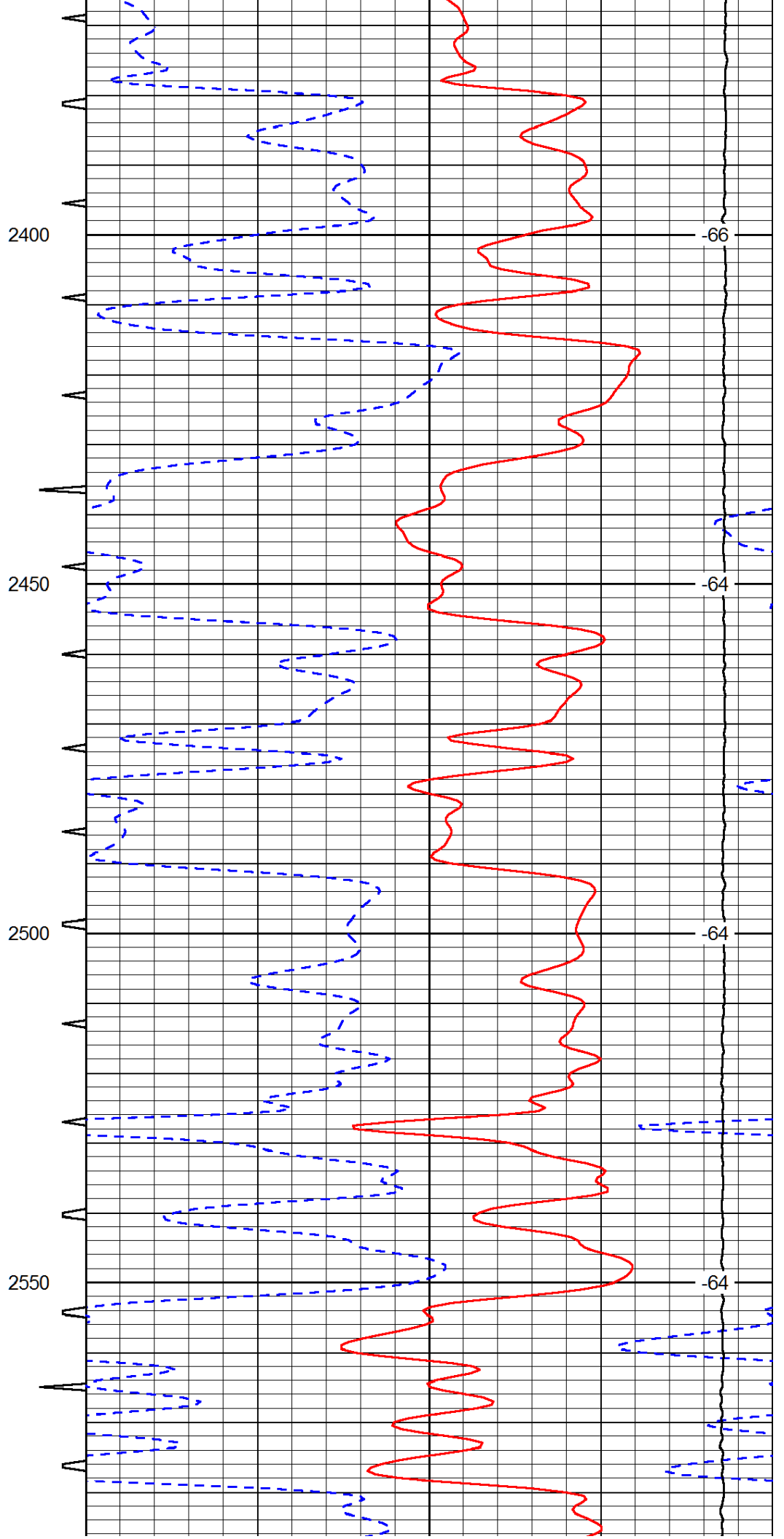
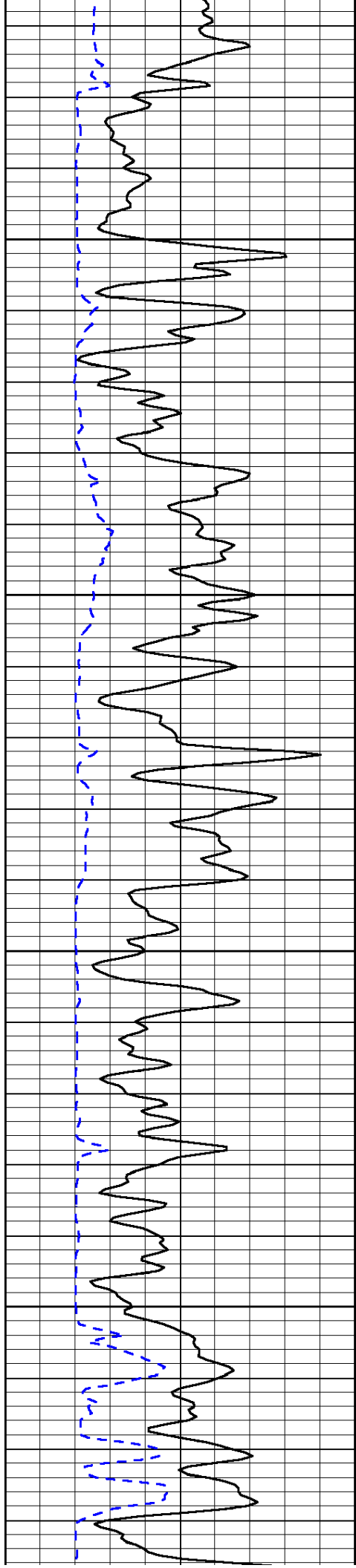


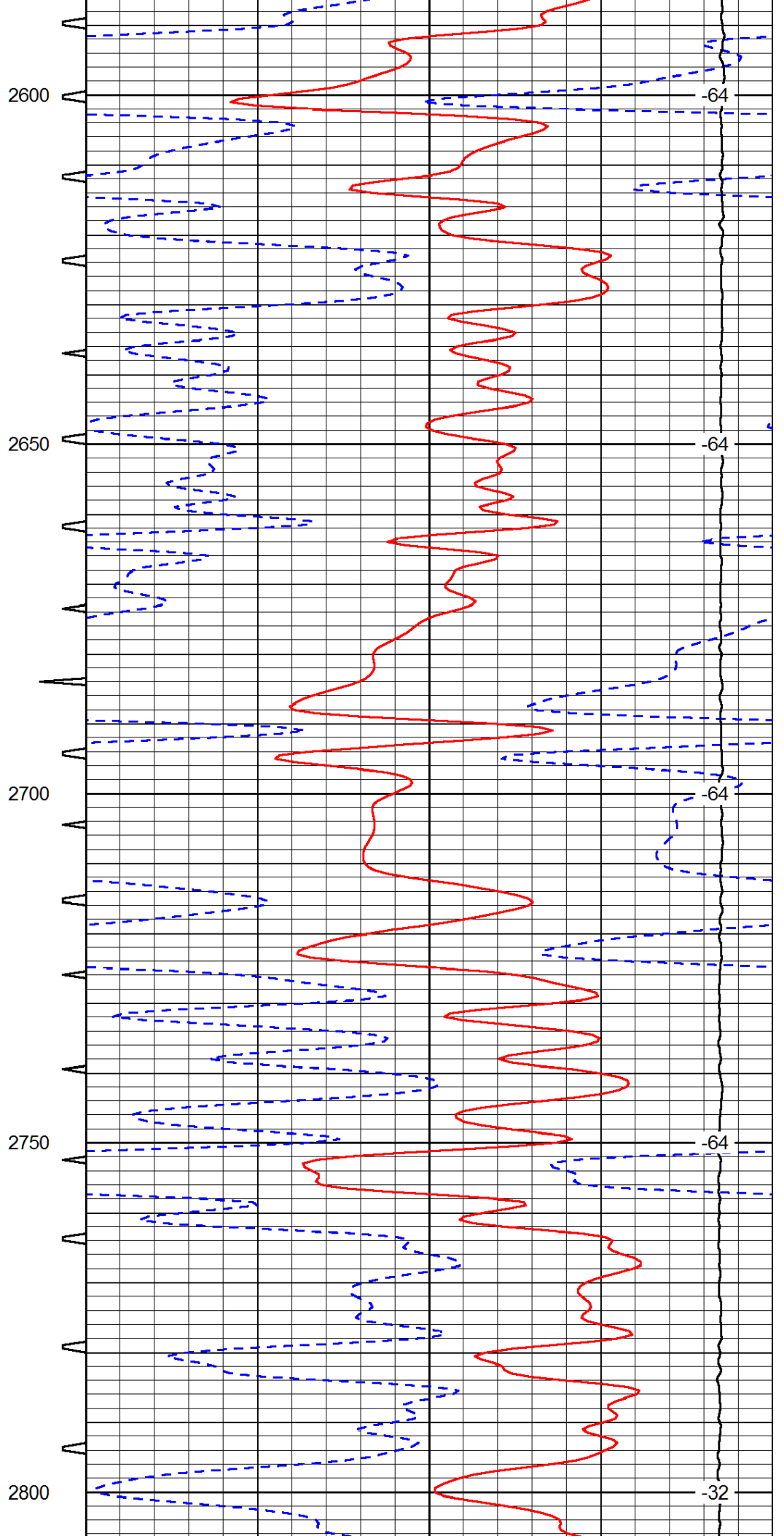
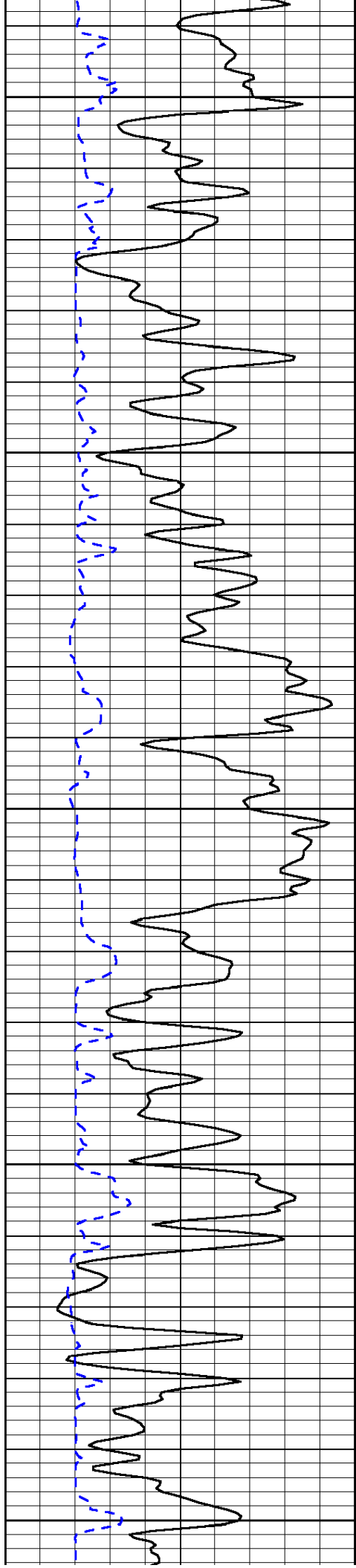


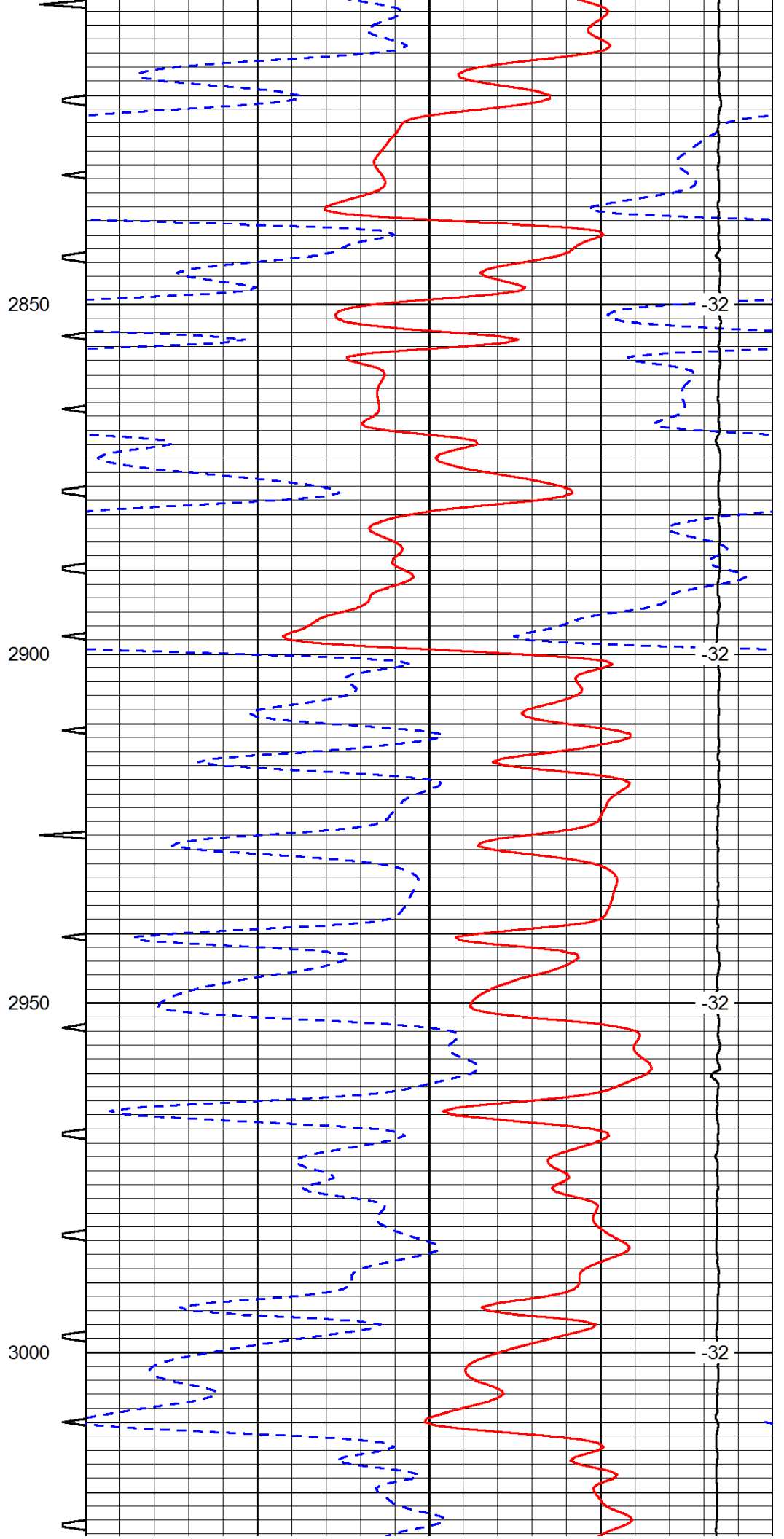
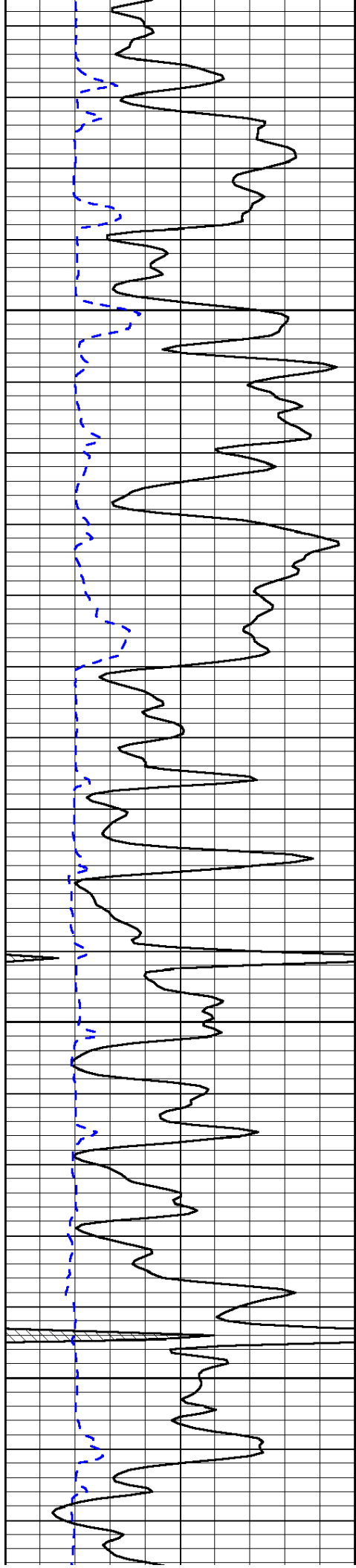


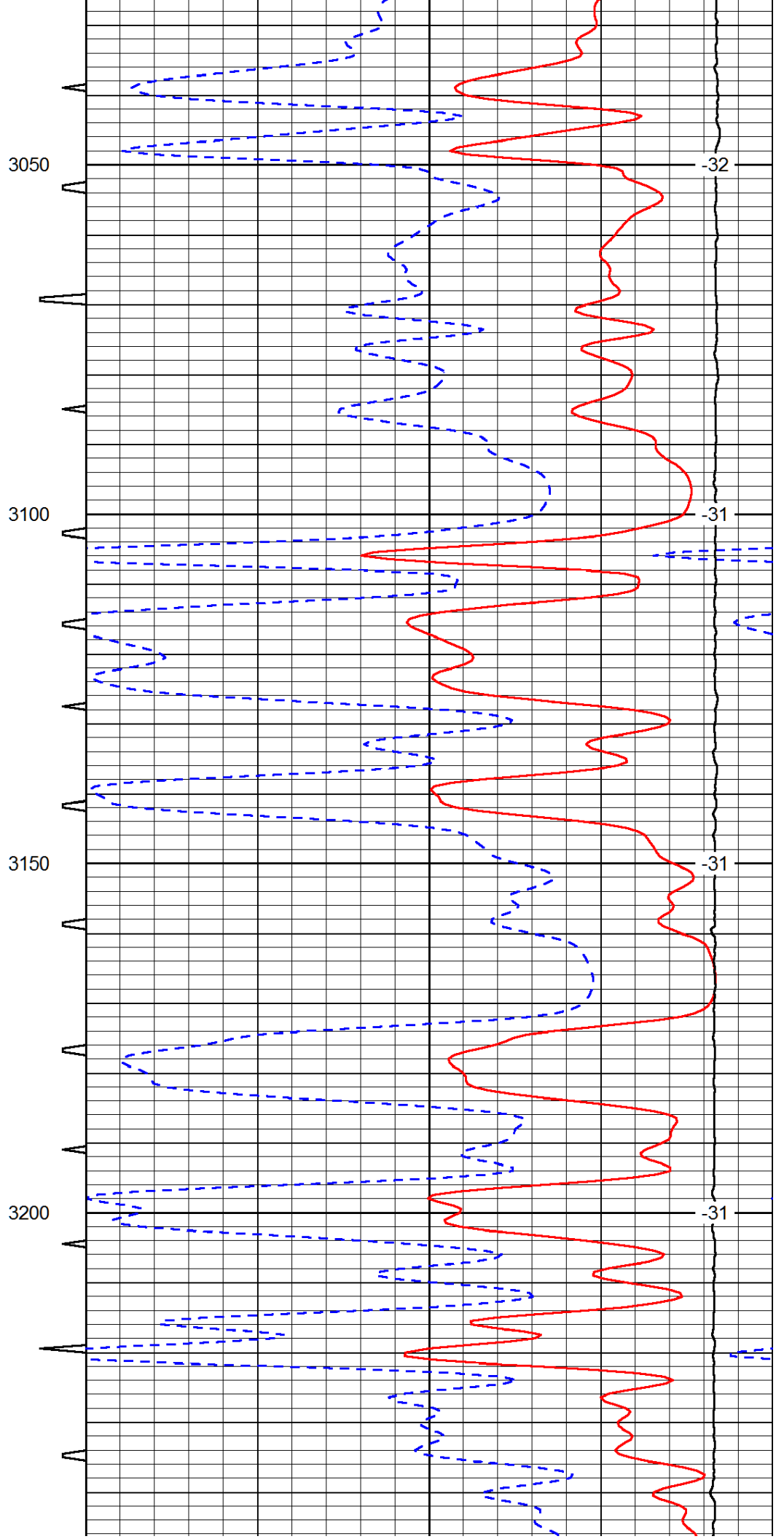
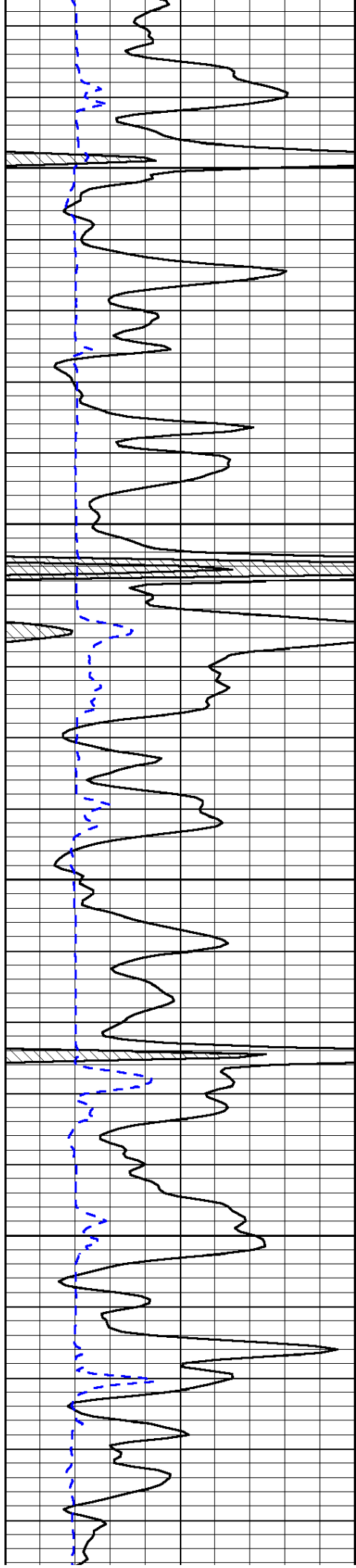


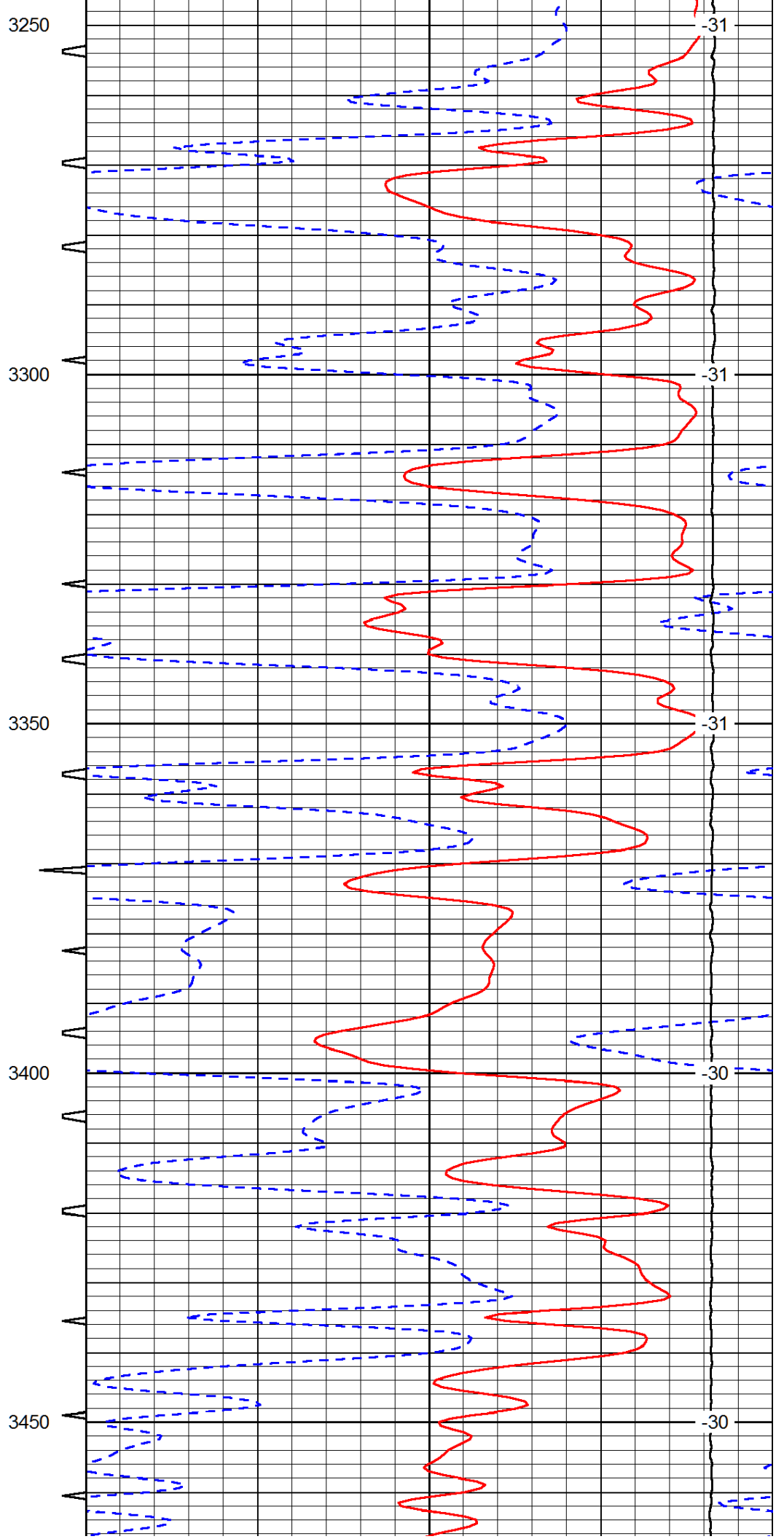
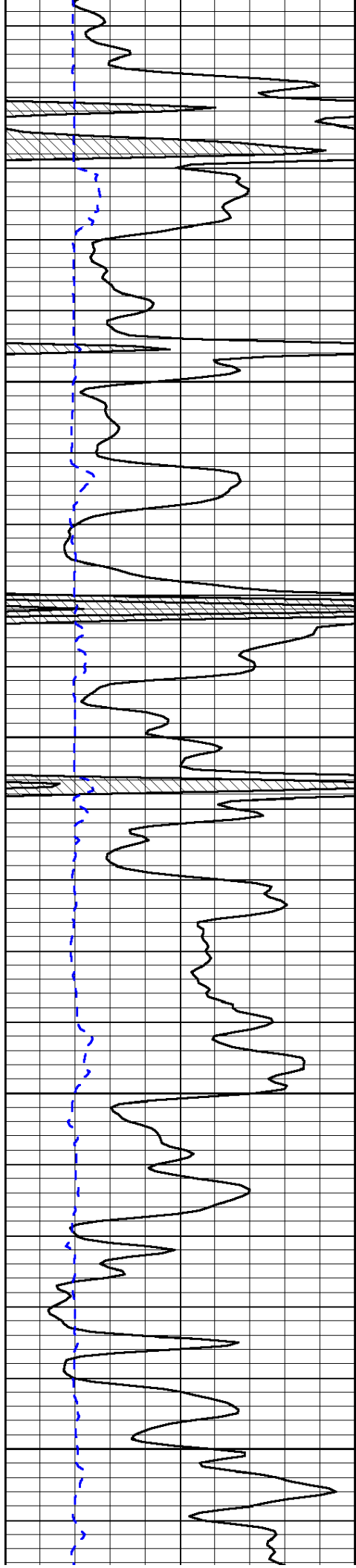


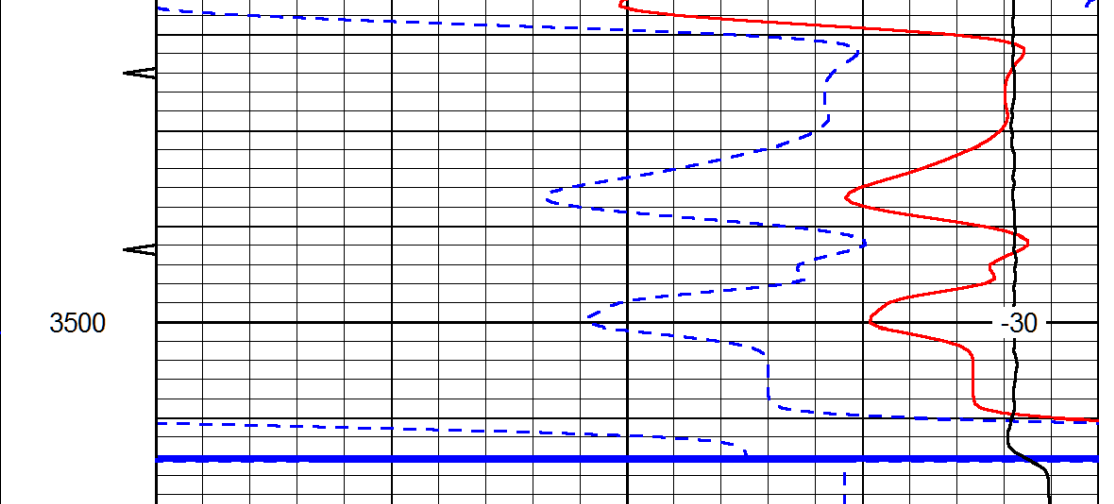
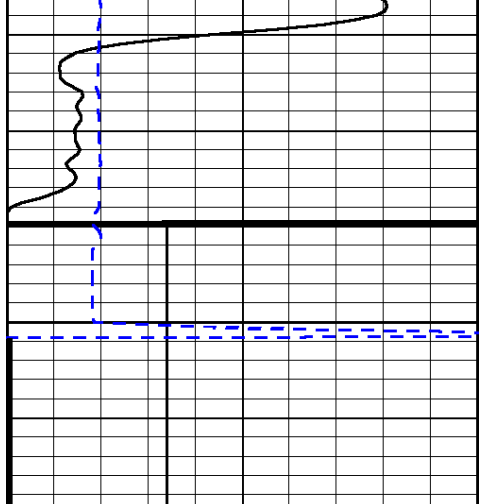












0	Gamma Ray (GAPI)	150	Sonic Int	140	Delta Time (usec/ft) (usec/ft)	40
150	Gamma Ray (GAPI)	300	5 (msec) 0	30	Sonic Porosity (pu)	-10
6	dCAL (in)	16		15000	LTEN (lb) (lb)	0
						LSPD (ft/min)