



Pioneer Energy Services

## Dual Compensated Porosity Log

**Company** Great Plains Energy, Inc.  
**Well** Odle #2-8  
**Field** Wildcat  
**County** Rooks  
**State** Kansas

Location NE SE SW SW  
 335' FSL / 1100' FWL  
 Sec: 8 Twp: 7S Rge: 18W  
 Other Services  
 DIL  
 MEL/BHCS

Permanent Datum Ground Level Elevation 1939  
 Log Measured From Kelly Bushing 5 Ft. Above Perm. Datum  
 Drilling Measured From Kelly Bushing

Date 7/18/2013  
 Run Number One  
 Type Log CNL / CDL  
 Depth Driller 3515  
 Depth Logger 3514  
 Bottom Logged Interval 3393  
 Top Logged Interval 2800  
 Type Fluid In Hole Chemical  
 Salinity, PPM CL 2700  
 Density 9.1  
 Level Full  
 Max. Rec. Temp. F 111  
 Operating Rig Time 4 Hours  
 Equipment -- Location 17 Hays  
 Recorded By R. Barnhart  
 Witnessed By Mike Madcharo

Borehole Record				Casing Record			
Run No.	Bit	From	To	Size	Wgt.	From	To
One	12.25	00	220	8.625	23#	00	220
Two	7.875	220	TD				

<<< Fold Here >>>

All interpretations are opinions based on inferences from electrical or other measurements and we cannot and do not guarantee the accuracy or correctness of any interpretation, and we shall not, except in the case of gross or willful negligence on our part, be liable or responsible for any loss, costs, damages, or expenses incurred or sustained by anyone resulting from any interpretation made by any of our officers, agents or employees. These interpretations are also subject to our general terms and conditions set out in our current Price Schedule.

### Comments

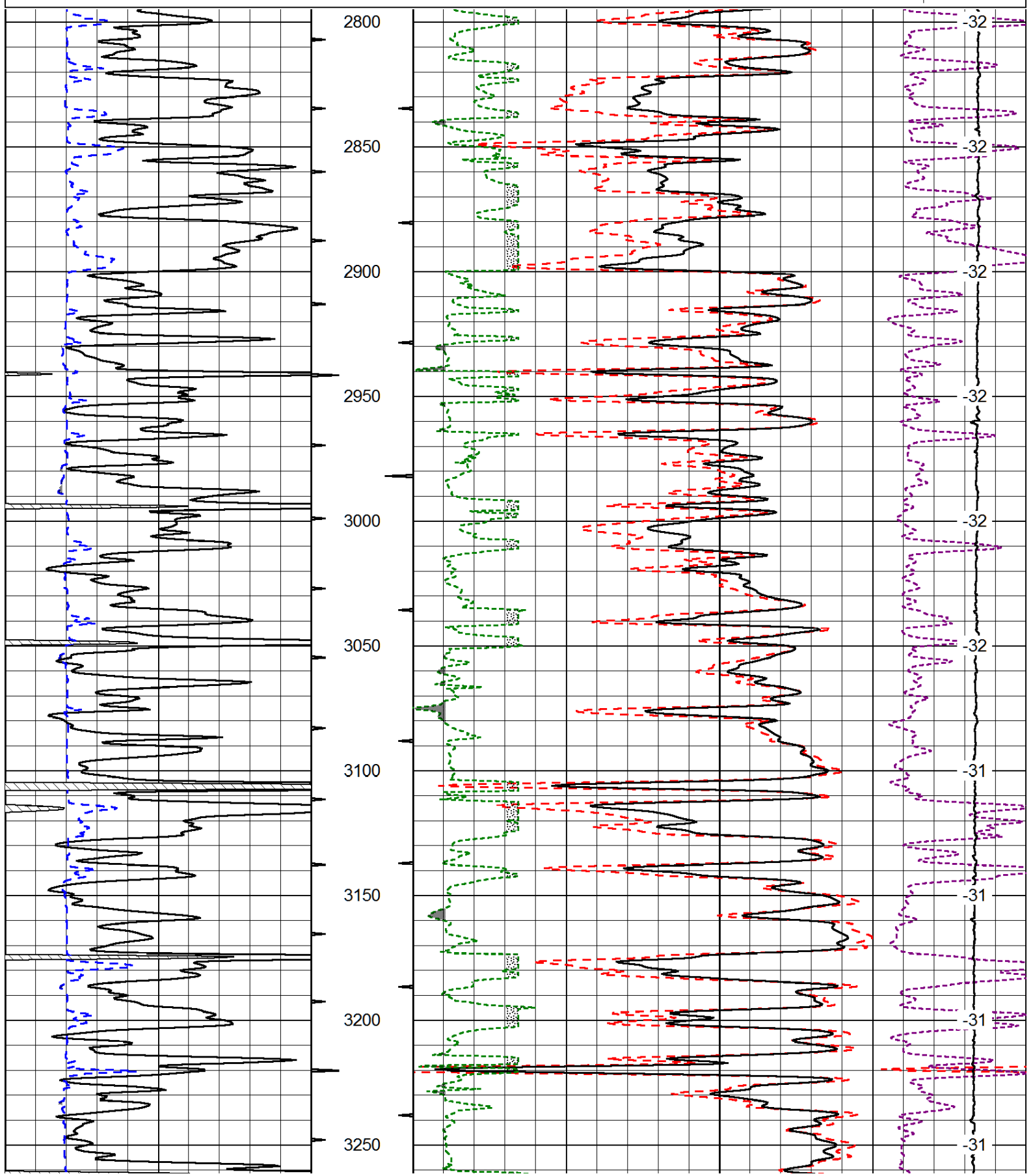
Thank you for using Log-Tech, Inc.  
 (785) 625-3858  
  
 Stockton, KS:  
 5W to 14 Rd., 2N thru CG, E into

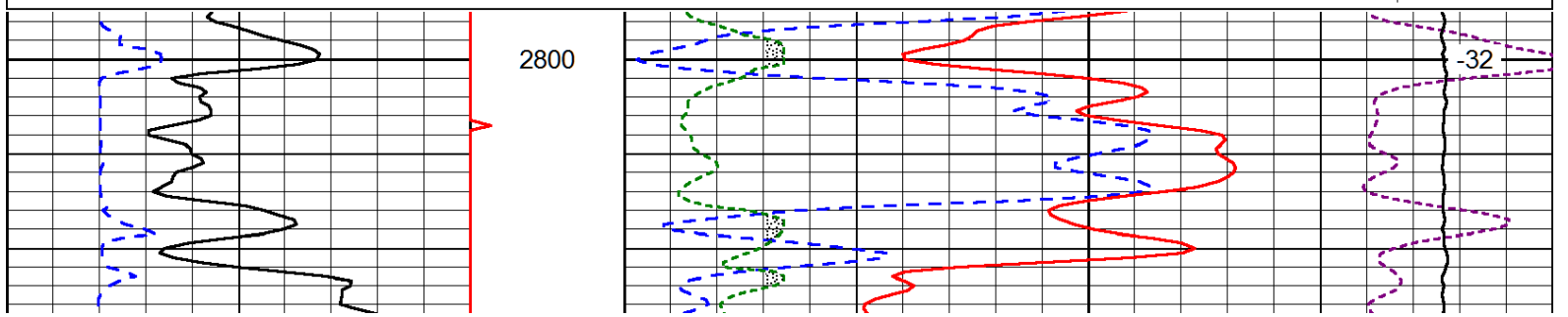
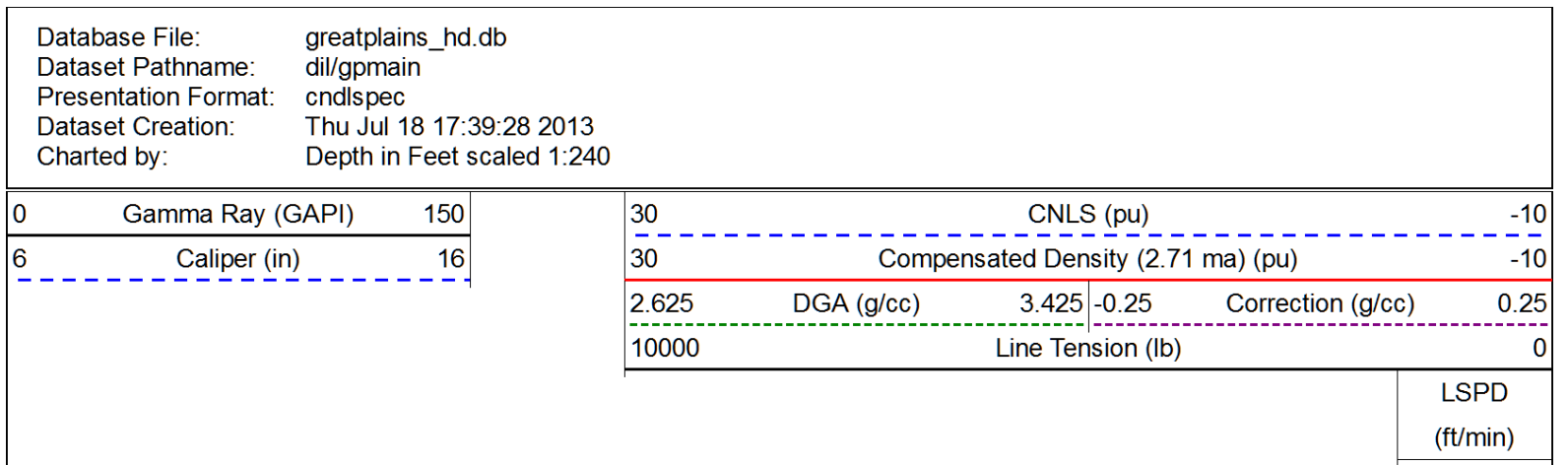
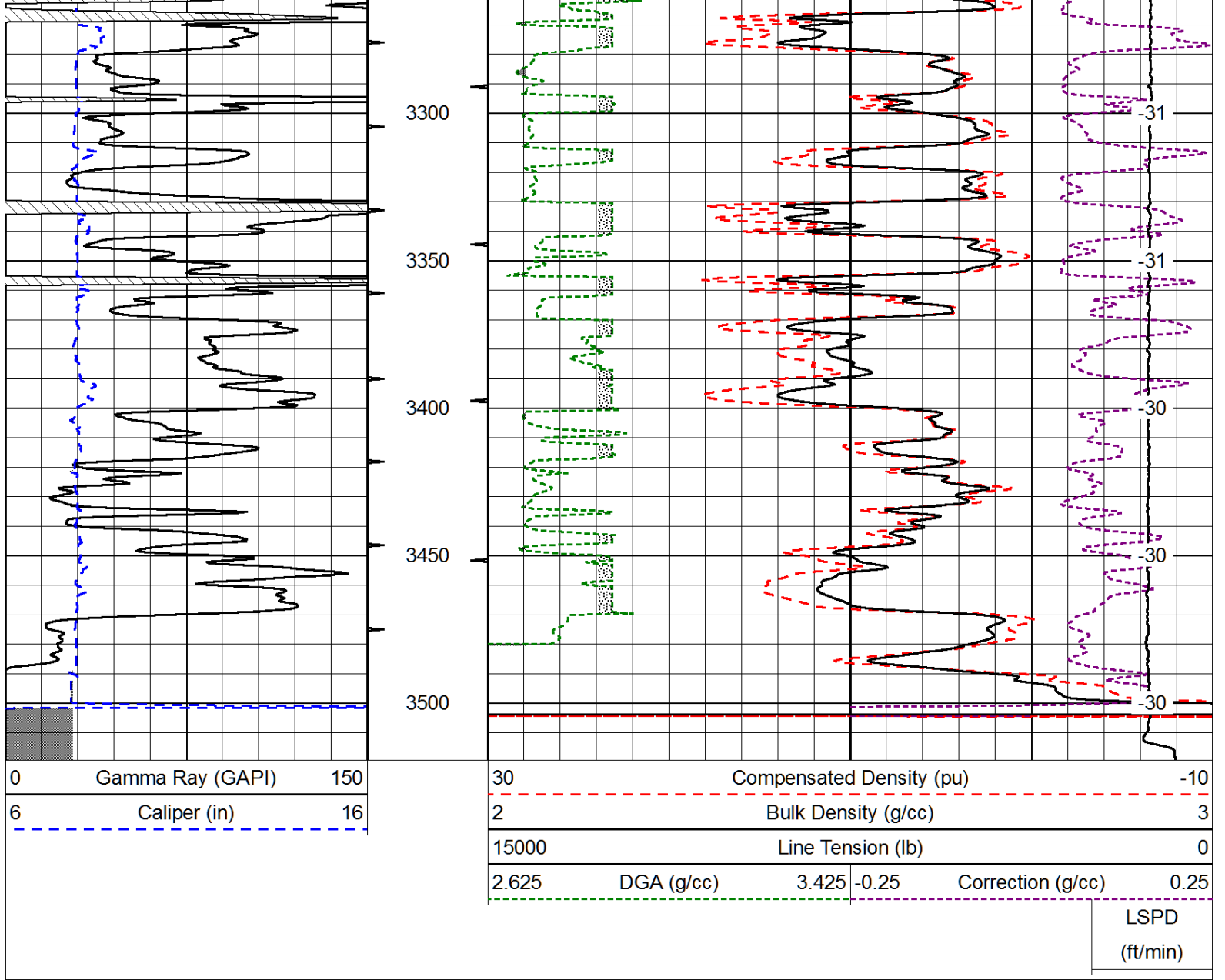
Database File: greatplains\_hd.db  
 Dataset Pathname: dil/gpmain  
 Presentation Format: cdl  
 Dataset Creation: Thu Jul 18 17:39:28 2013  
 Charted by: Depth in Feet scaled 1:600

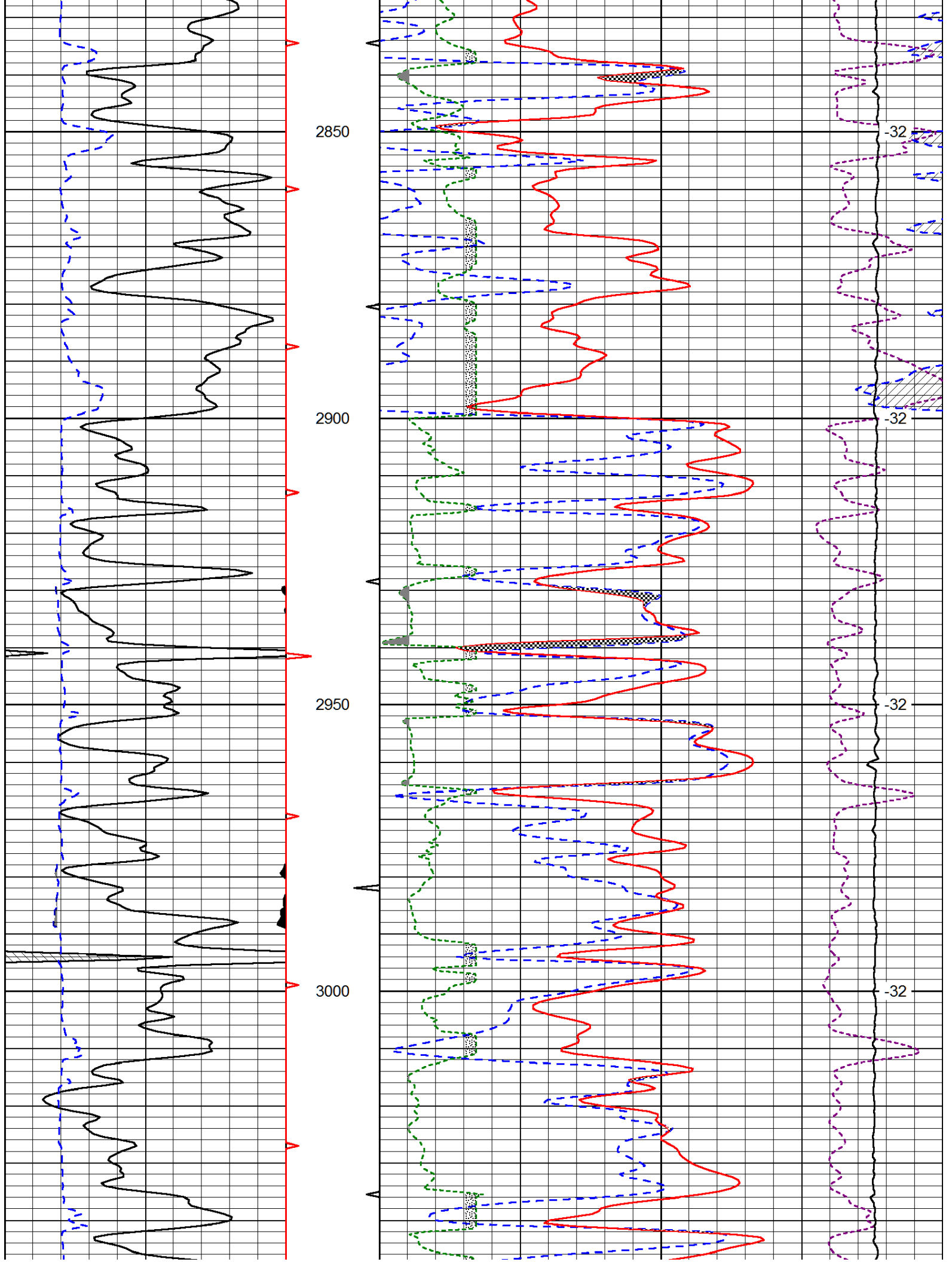
0	Gamma Ray (GAPI)	150
6	Caliper (in)	16

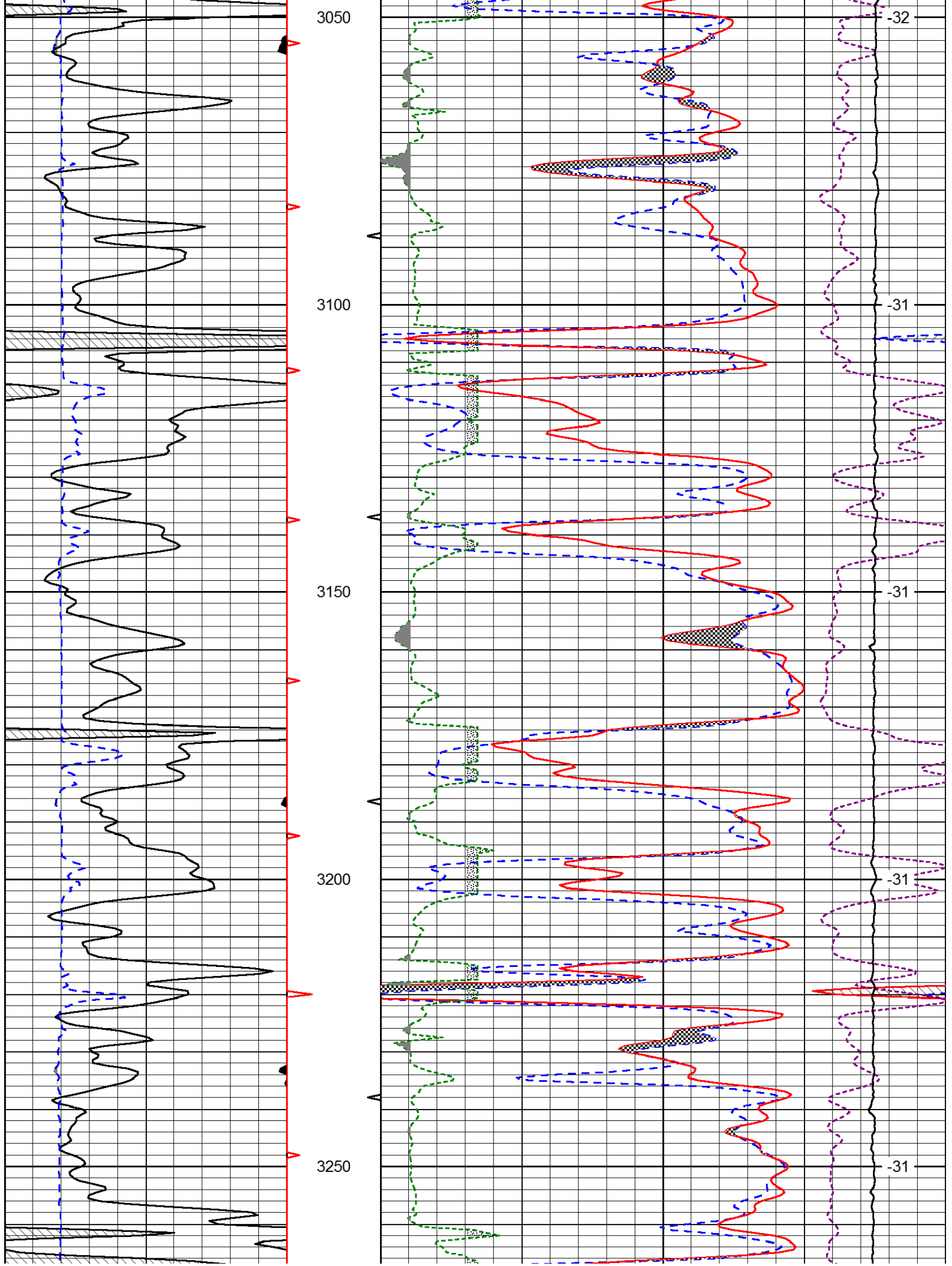
30	Compensated Density (pu)		-10
2	Bulk Density (g/cc)		3
15000	Line Tension (lb)		0
2.625	DGA (g/cc)	3.425	-0.25
	Correction (g/cc)		0.25

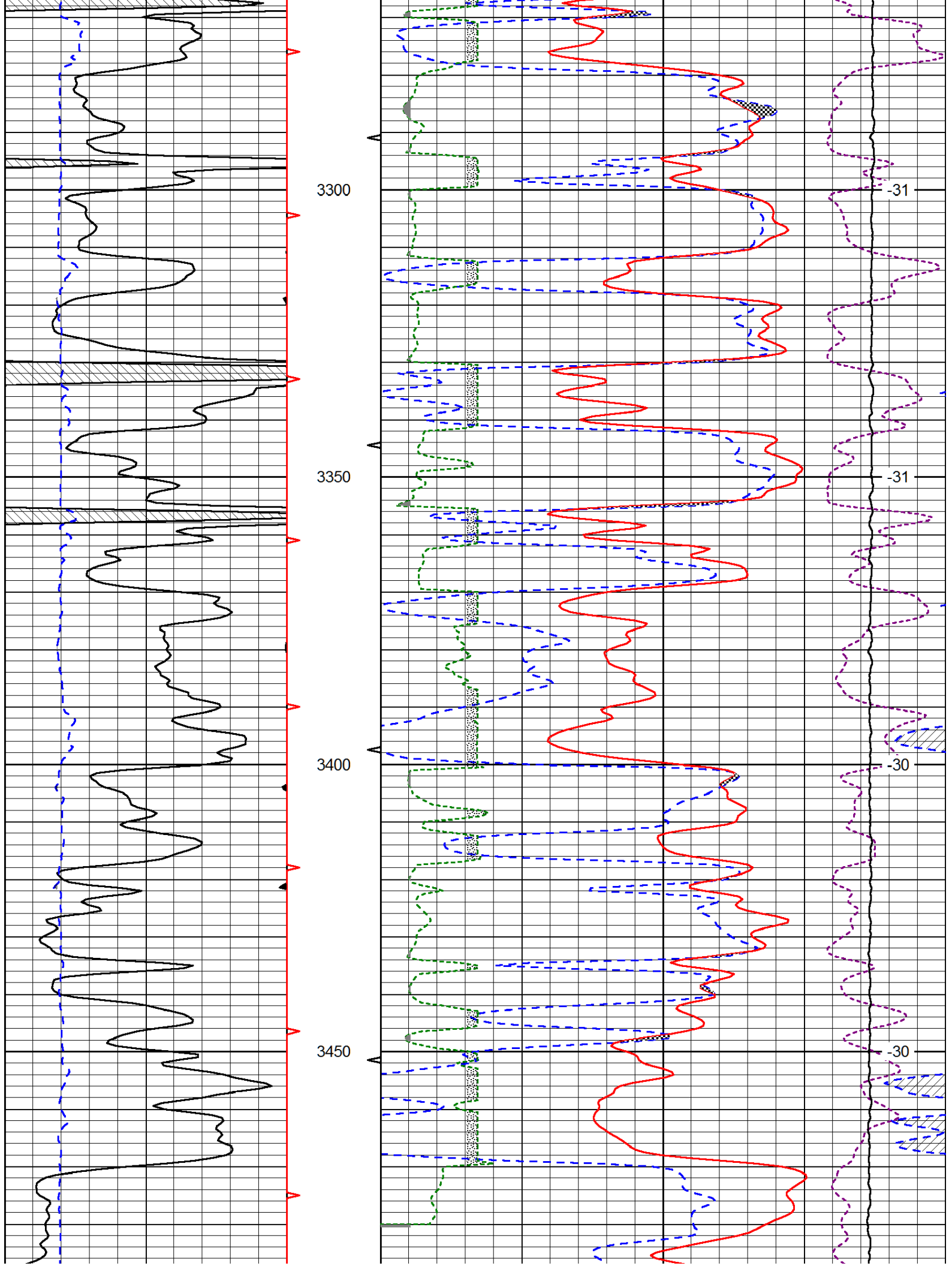
LSPD  
(ft/min)

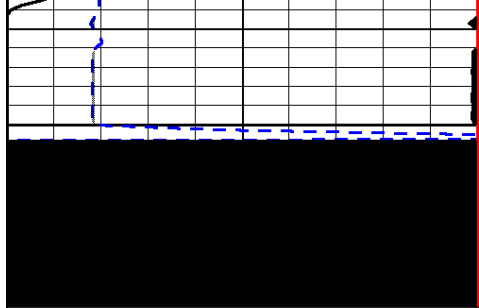




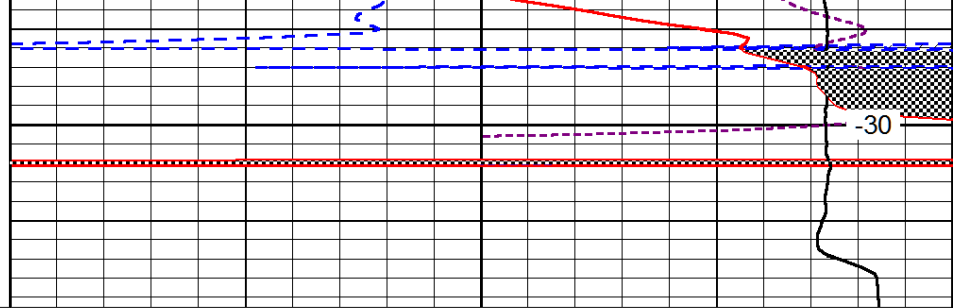








3500



0	Gamma Ray (GAPI)	150
6	Caliper (in)	16

30	CNLS (pu)			-10	
30	Compensated Density (2.71 ma) (pu)			-10	
2.625	DGA (g/cc)	3.425	-0.25	Correction (g/cc)	0.25
10000	Line Tension (lb)			0	

LSPD  
(ft/min)