



Pioneer Energy Services

Dual Induction Log

15-163-24132-00-00

API No.

Company **Great Plains Energy, Inc.**

Well **Odle #2-8**

Field **Wildcat**

County **Rooks**

State

Kansas

Location **NE SE SW SW
335' FSL / 1100' FWL**

Sec: **8** Twp: **7S** Rge: **18W**

Other Services
CNL/CDL
MEL/BHCS

Permanent Datum **Ground Level** Elevation **1939**

Log Measured From **Kelly Bushing** 5 Ft. Above Perm. Datum

Drilling Measured From **Kelly Bushing**

Date **7/18/2013**

Run Number **One**

Depth Driller **3515**

Depth Logger **3514**

Bottom Logged Interval **3413**

Top Log Interval **200**

Casing Driller **8.625 @ 220**

Casing Logger **224**

Bit Size **7.875**

Type Fluid in Hole **Chemical**

Salinity, ppm CL **2700**

Density / Viscosity **9.1 | 48**

pH / Fluid Loss **10.5 | 8.0**

Source of Sample **Flowline**

Rm @ Meas. Temp **0.42 @ 82**

Rmf @ Meas. Temp **0.32 @ 82**

Rmc @ Meas. Temp **0.57 @ 82**

Source of Rmf / Rmc **Charts**

Rm @ BHT **0.31 @ 111**

Operating Rig Time **4 Hours**

Max Rec. Temp. F **111**

Equipment Number **17**

Location **Hays**

Recorded By **R. Barnhart**

Witnessed By **Mike Madcharo**

<<< Fold Here >>>

All interpretations are opinions based on inferences from electrical or other measurements and we cannot and do not guarantee the accuracy or correctness of any interpretation, and we shall not, except in the case of gross or willful negligence on our part, be liable or responsible for any loss, costs, damages, or expenses incurred or sustained by anyone resulting from any interpretation made by any of our officers, agents or employees. These interpretations are also subject to our general terms and conditions set out in our current Price Schedule.

Comments

Thank you for using Log-Tech, Inc.
(785) 625-3858

Stockton, KS:
5W to 14 Rd., 2N thru CG, E into

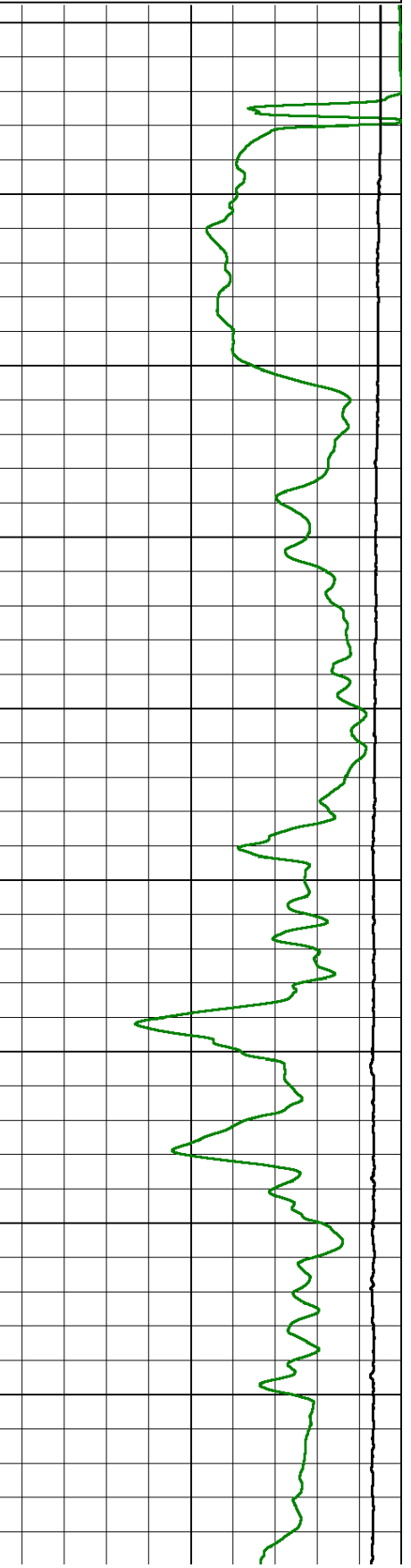
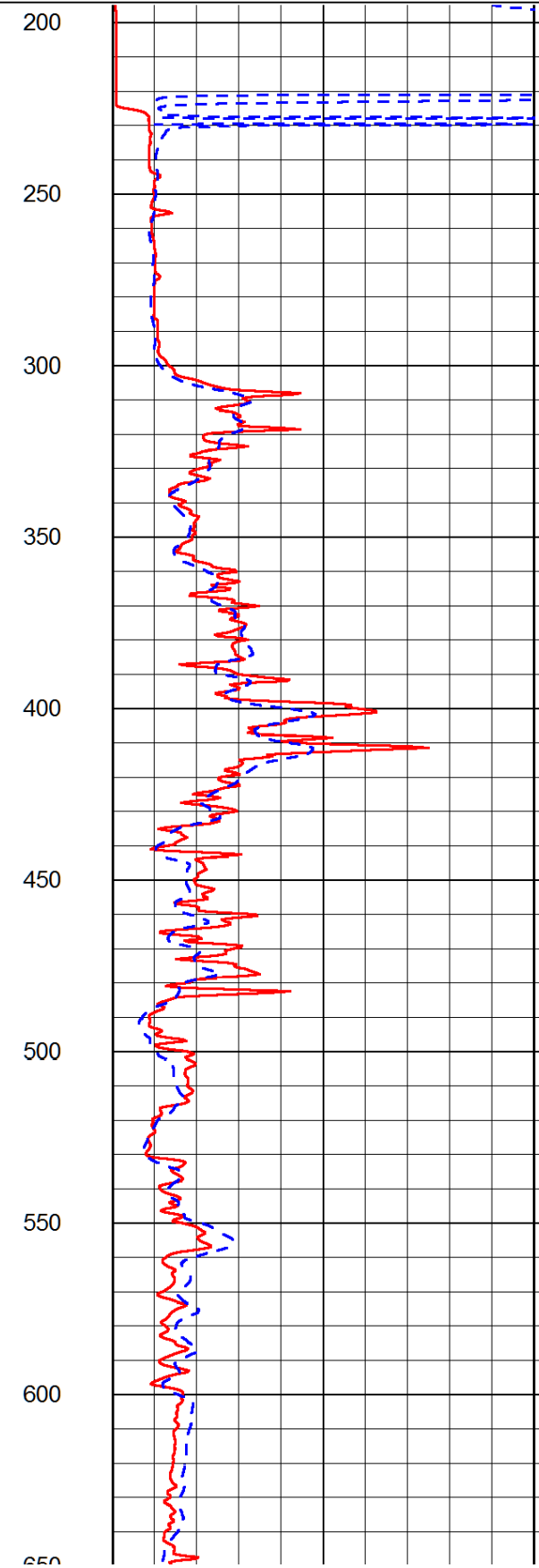
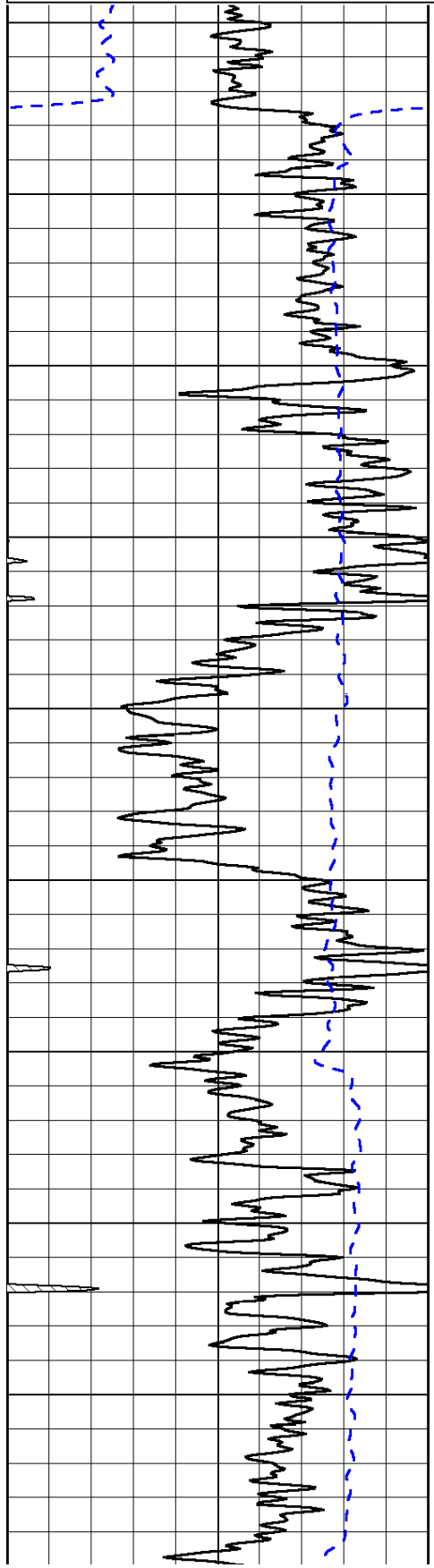
Database File: greatplains_hd.db
Dataset Pathname: dil/gpmain
Presentation Format: dil2in
Dataset Creation: Thu Jul 18 17:39:28 2013
Charted by: Depth in Feet scaled 1:600

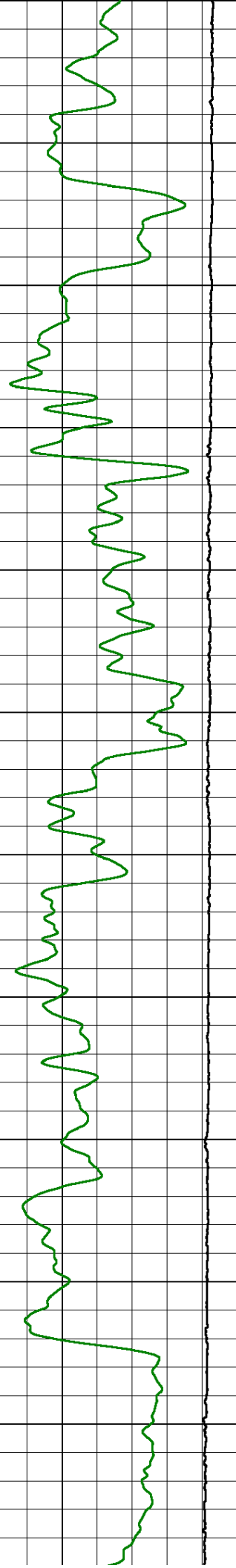
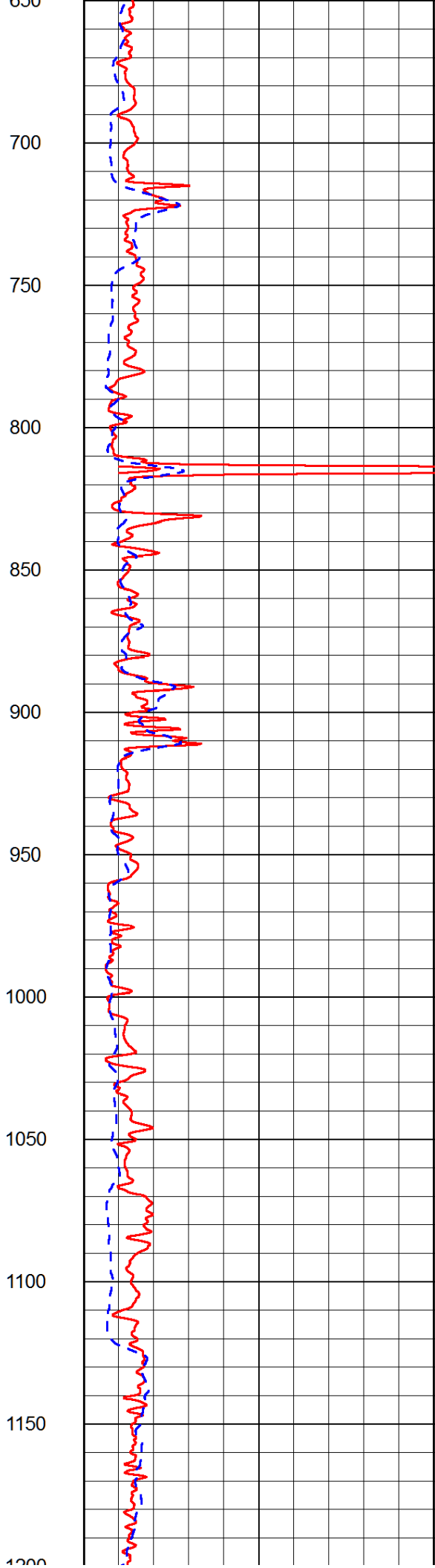
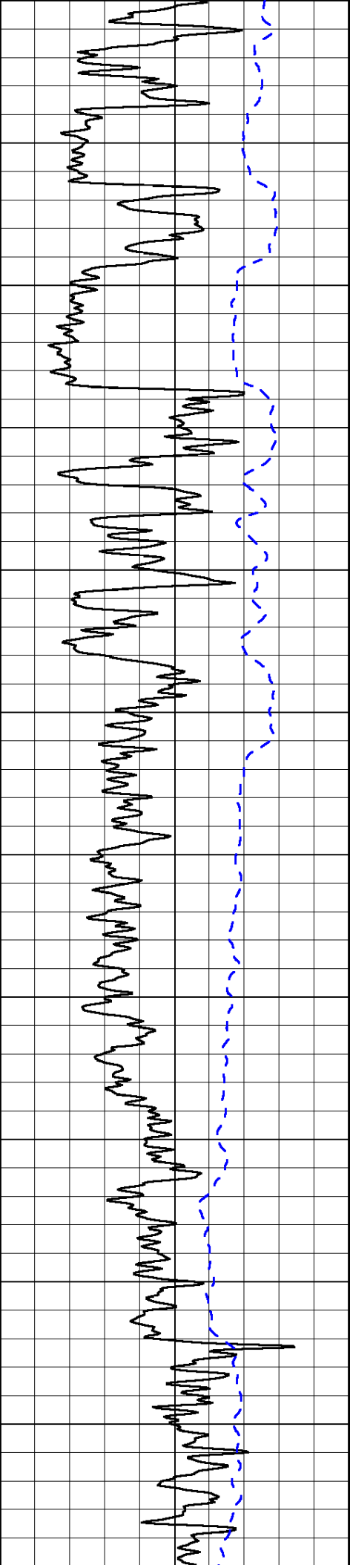
0	Gamma Ray (GAPI)	150
-200	SP (mV)	0

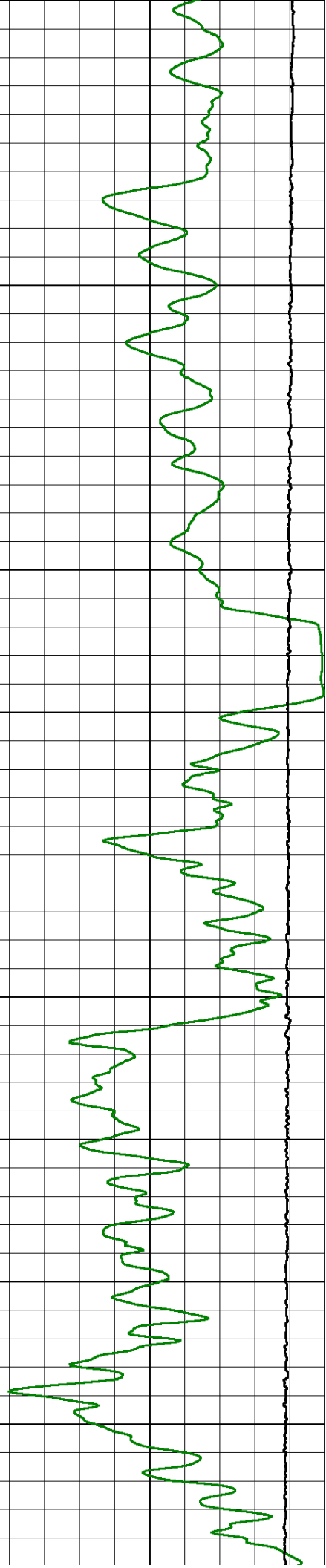
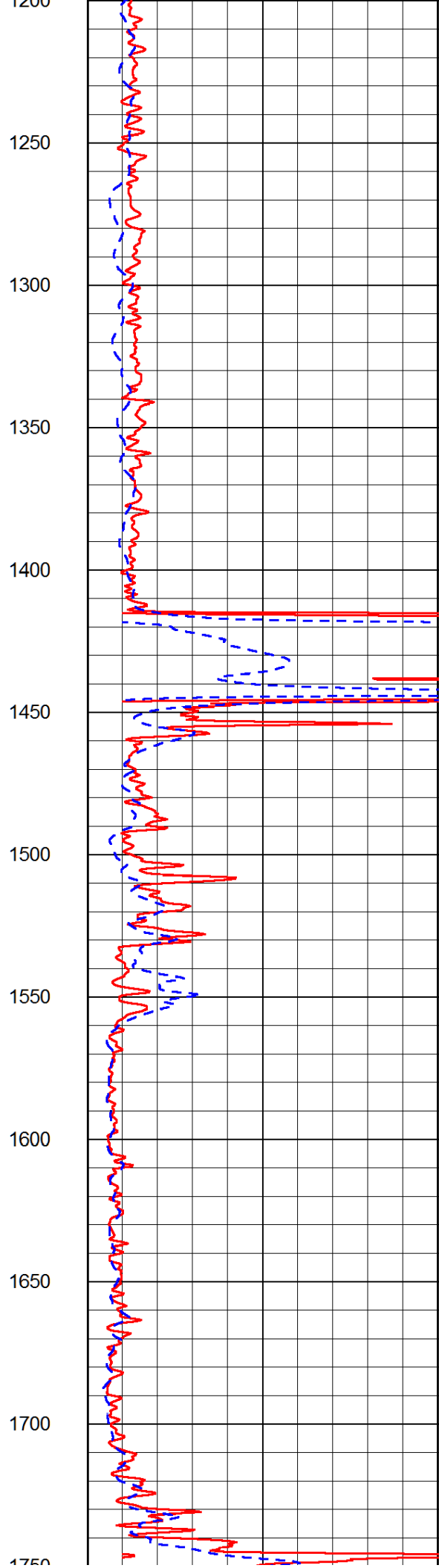
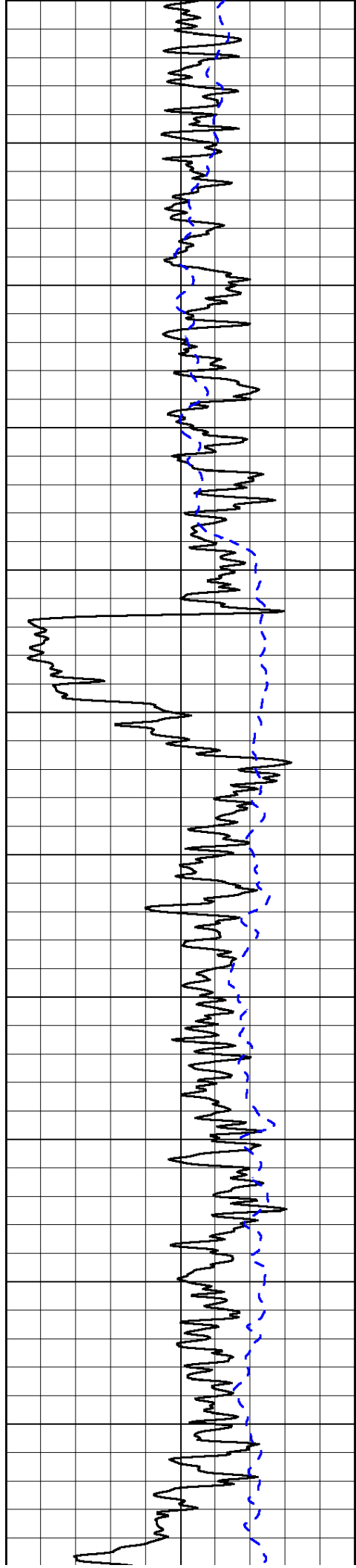
0	Shallow Resistivity (Ohm-m)	50
0	Deep Resistivity (Ohm-m)	50

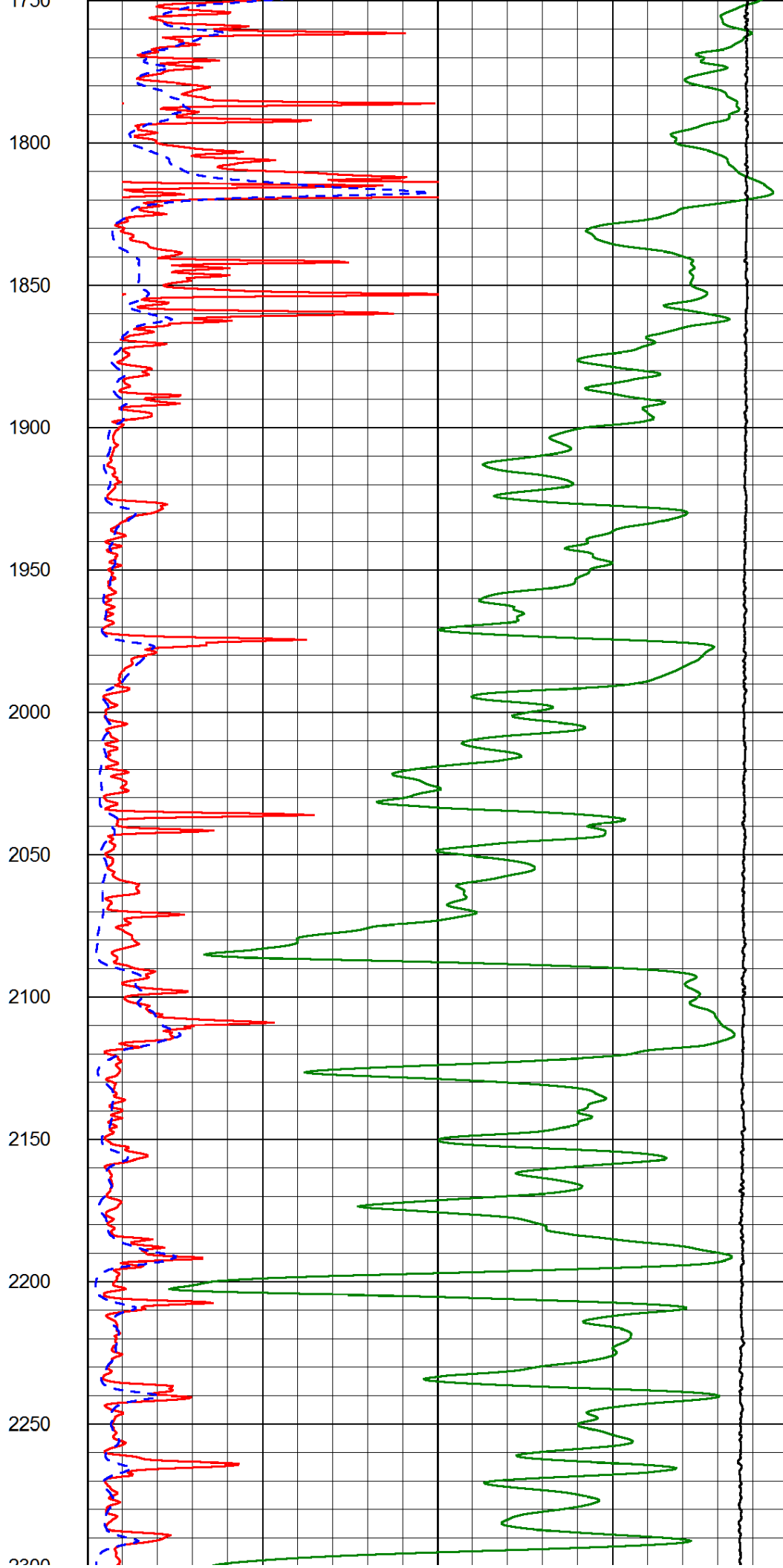
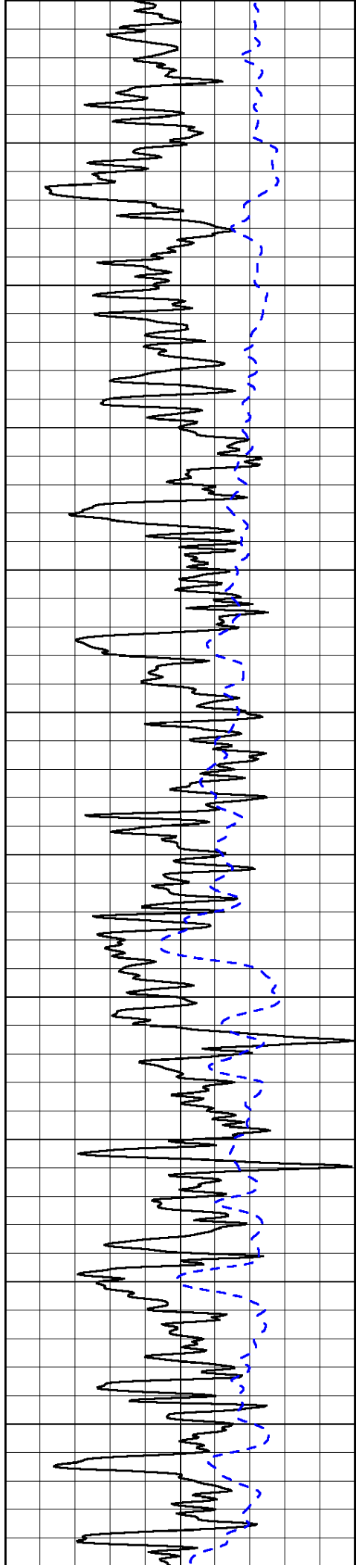
1000	Conductivity (Ohm-m)	0
15000	Line Tension (lb)	0

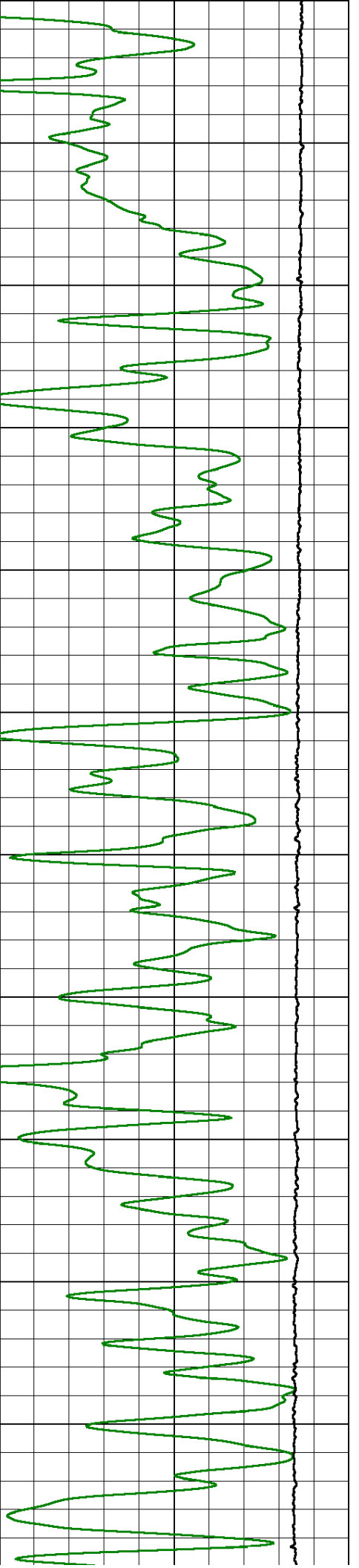
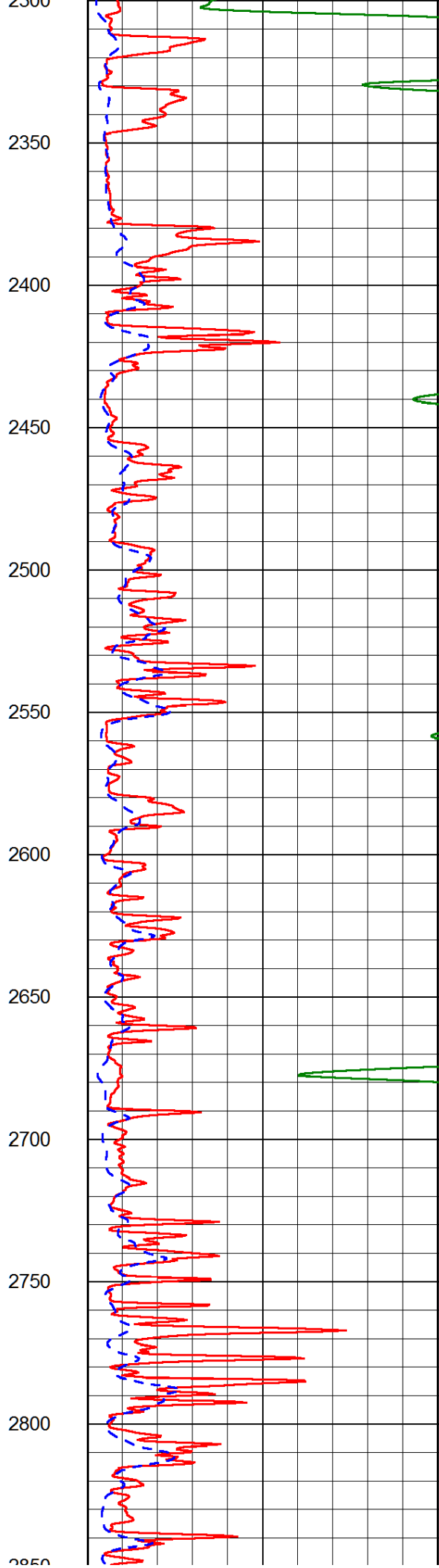
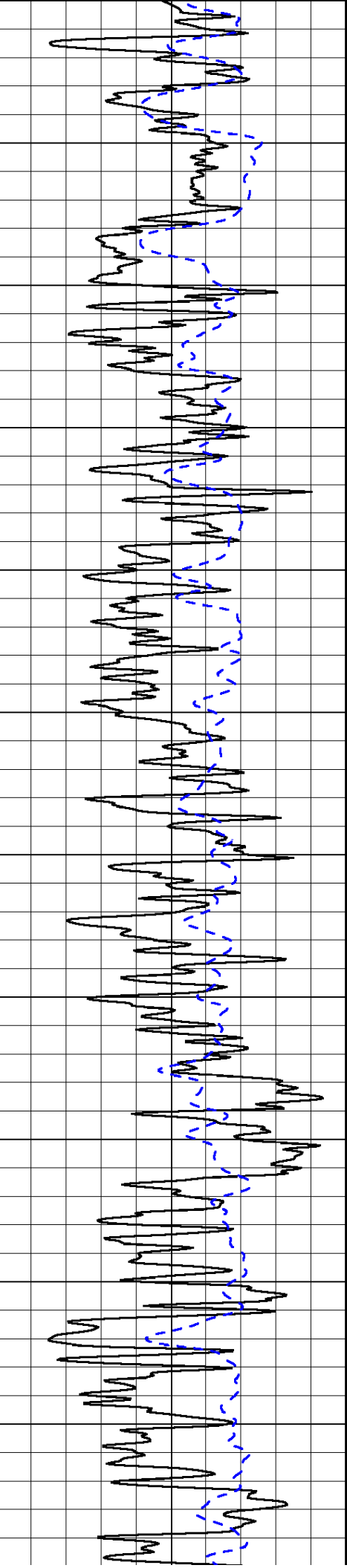
Shallow Resistivity		
50	(Ohm-m)	500
50	Deep Resistivity (Ohm-m)	500

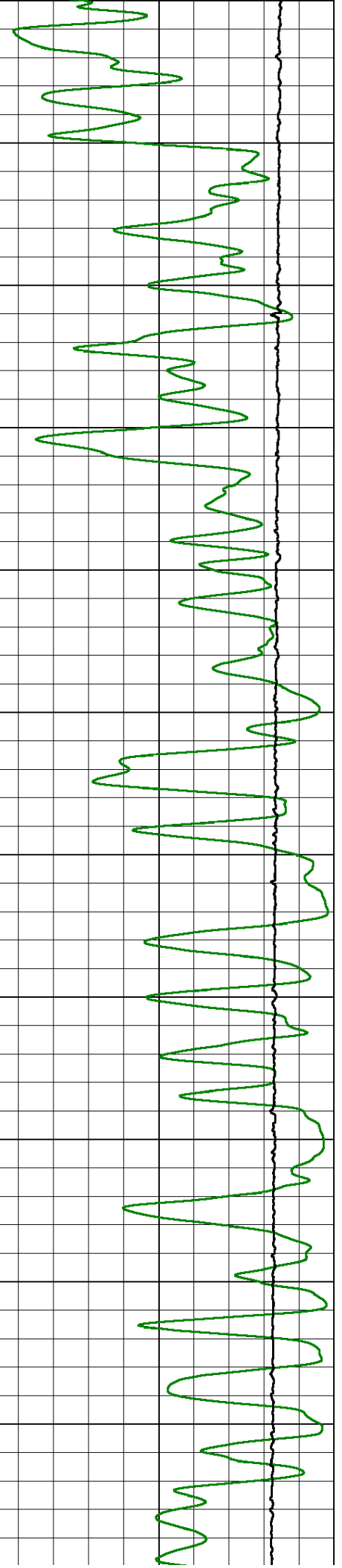
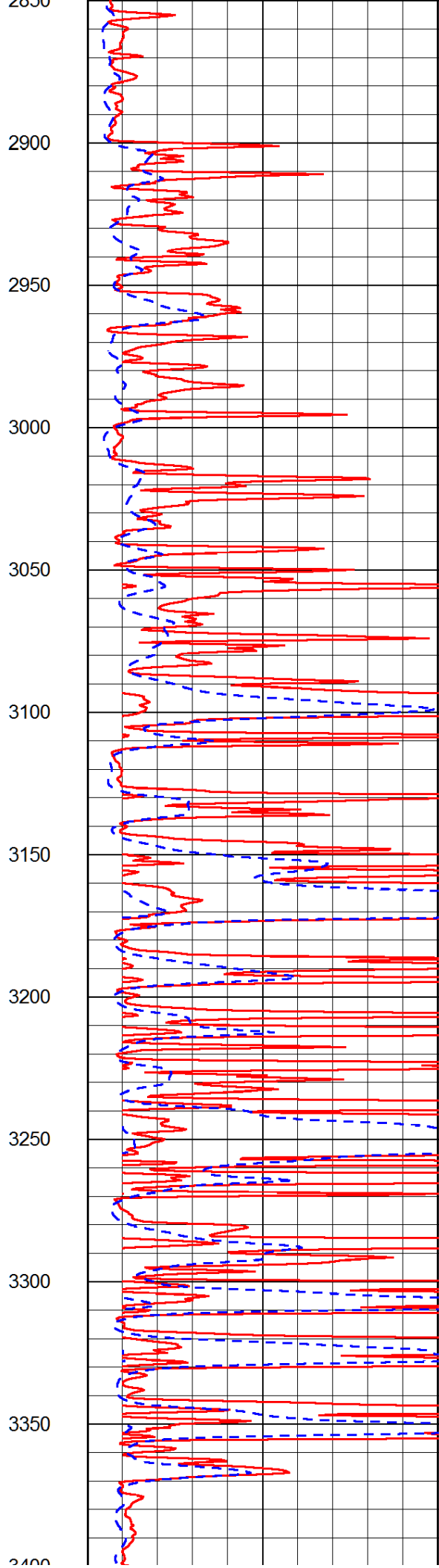
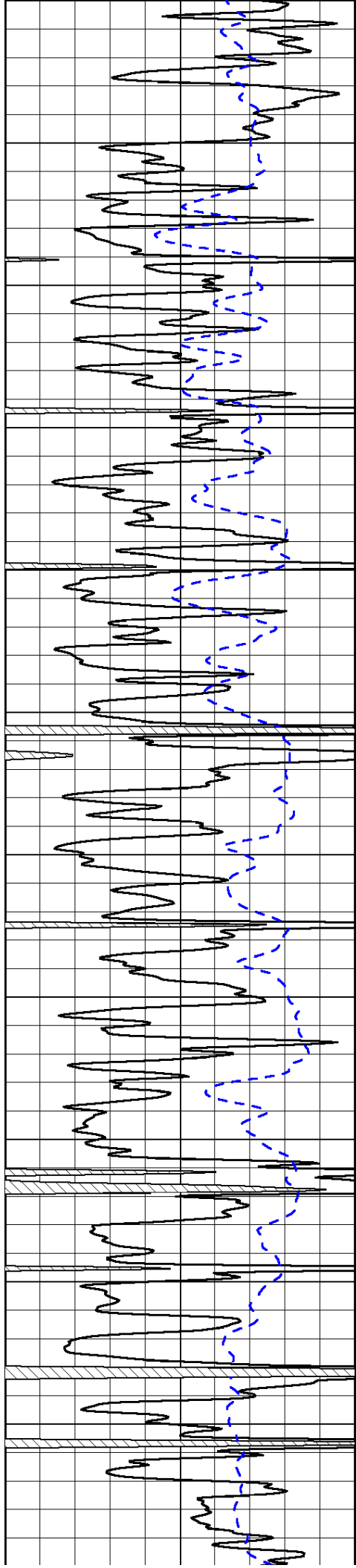


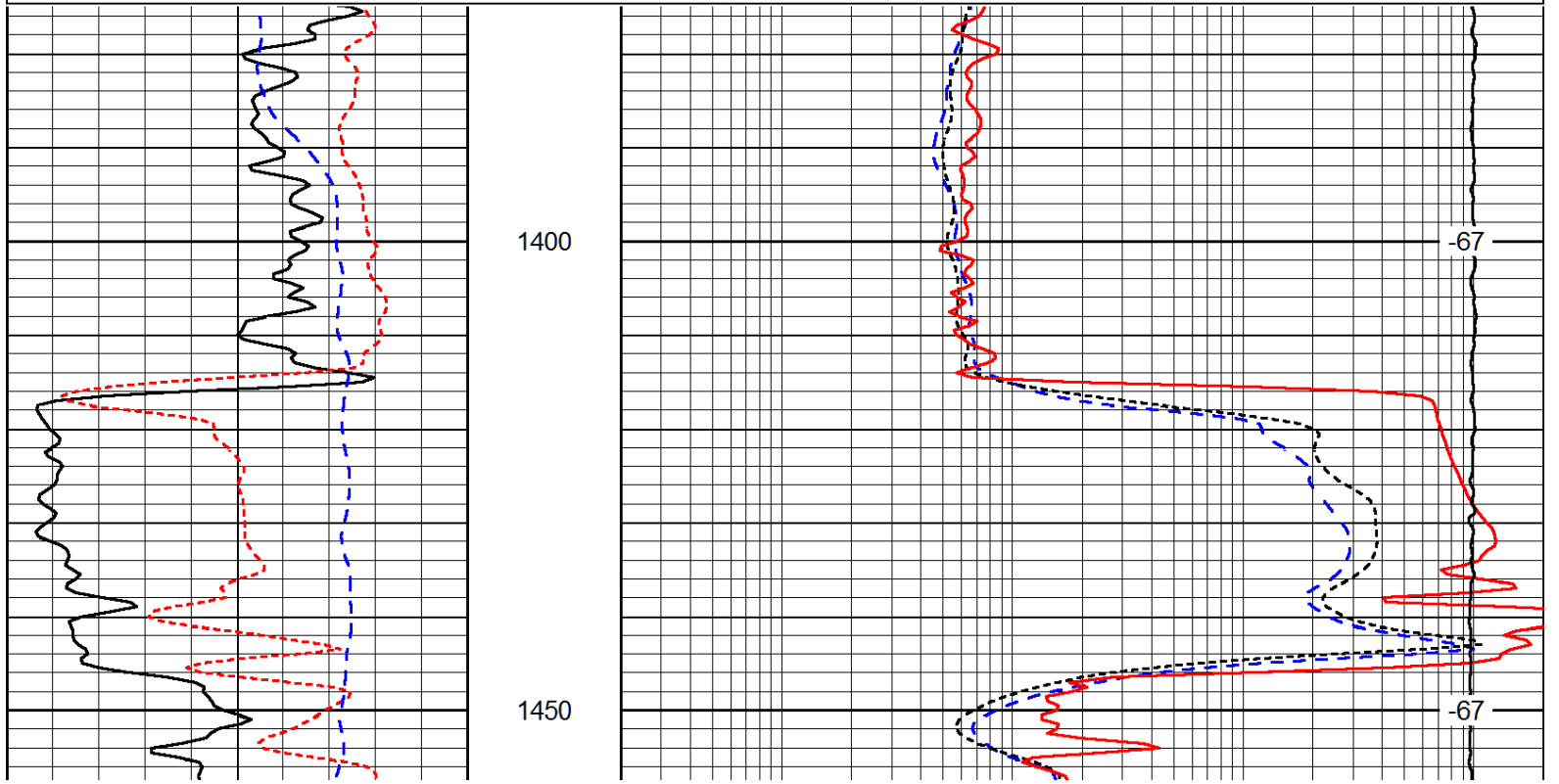
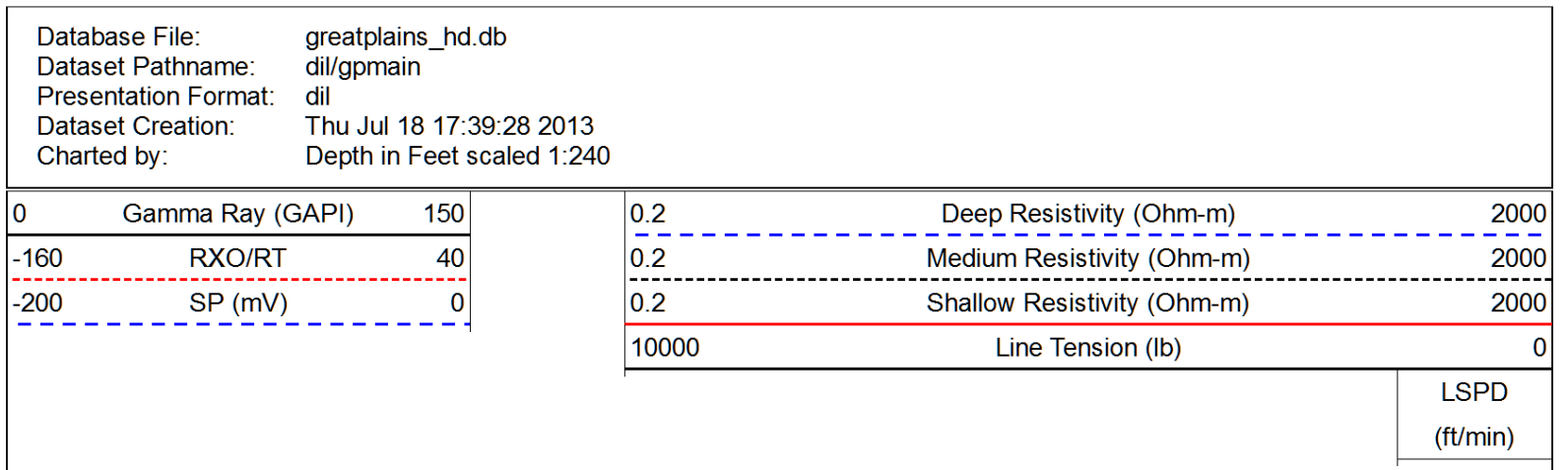
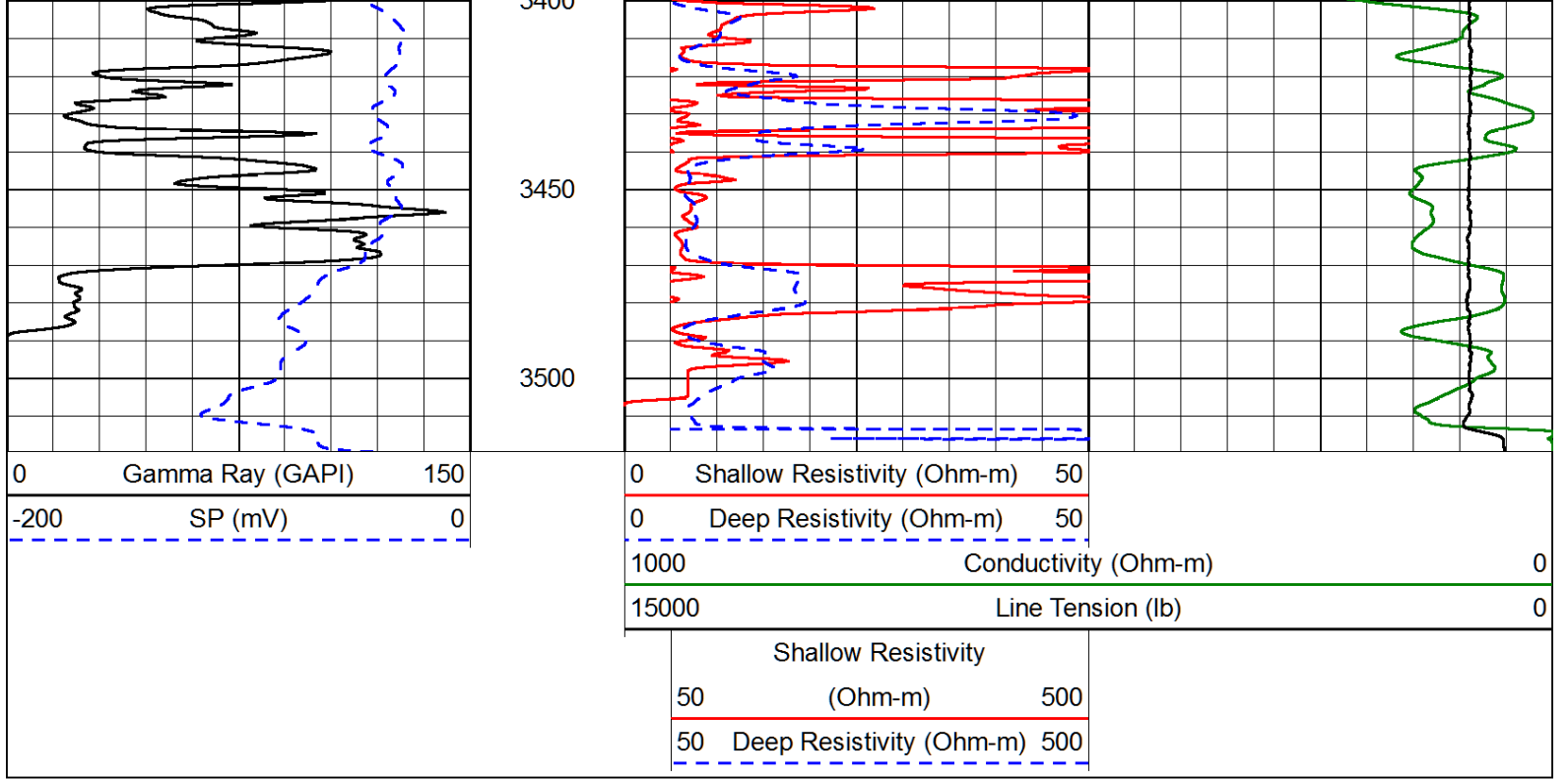


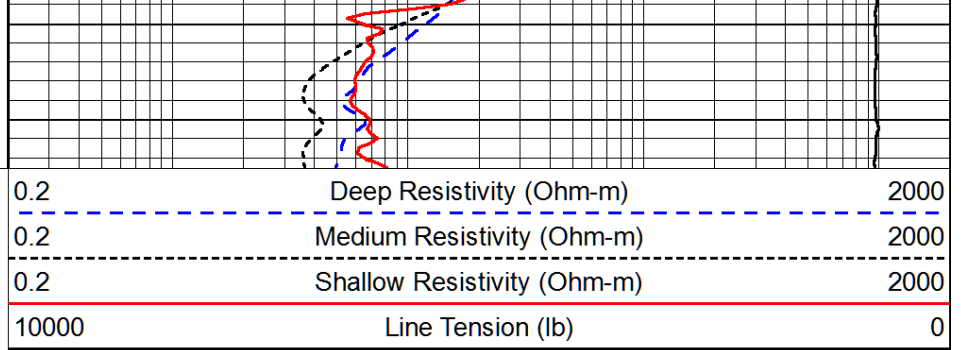
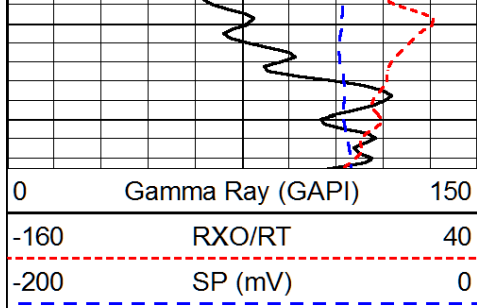






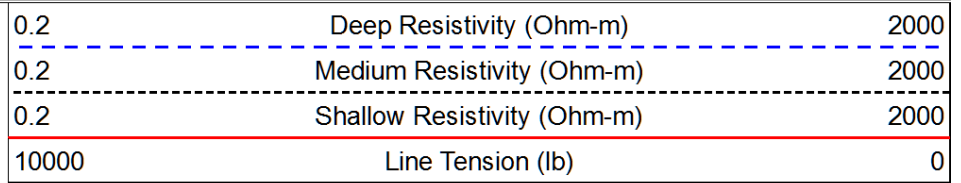
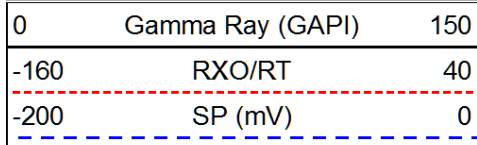




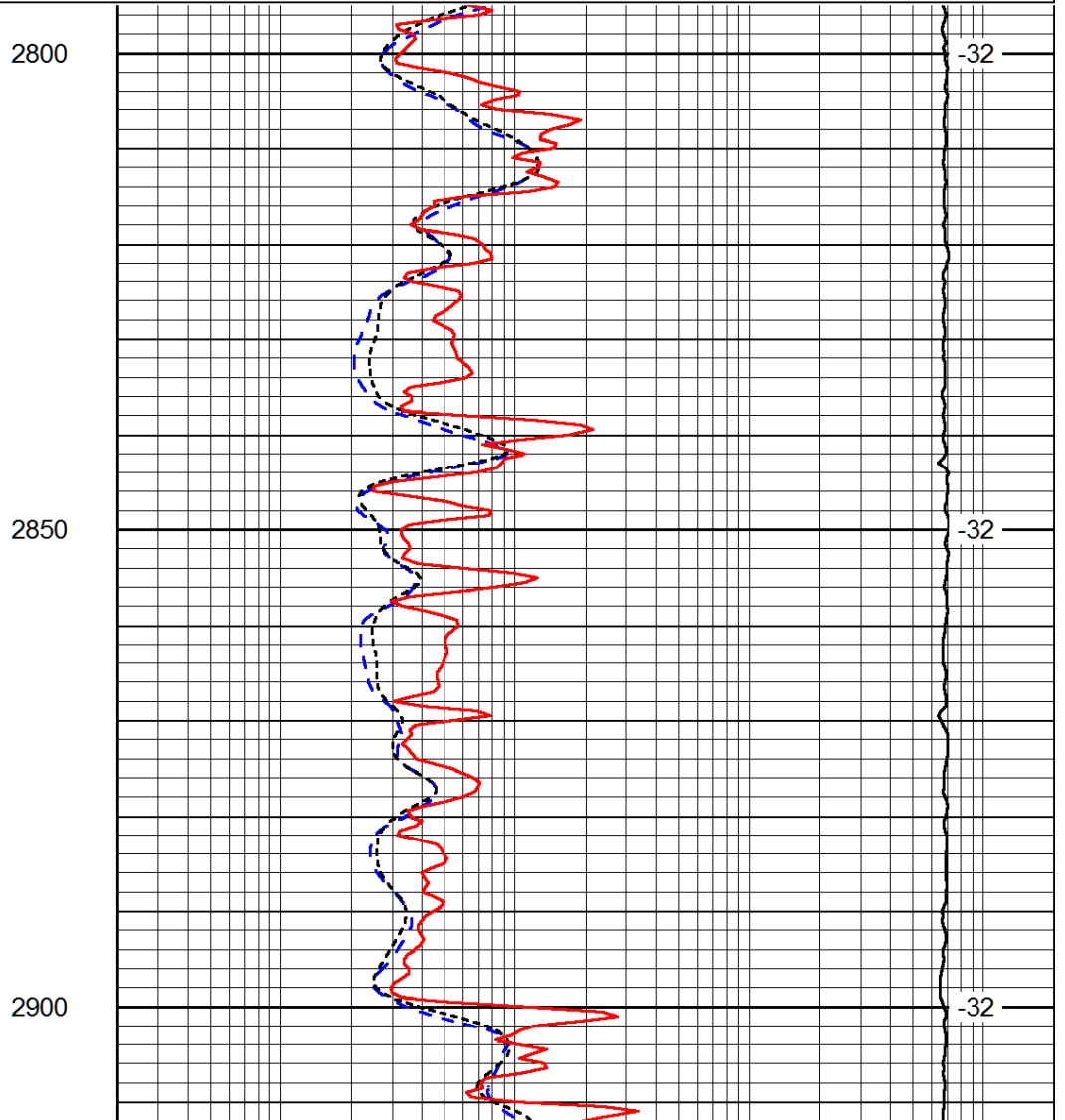
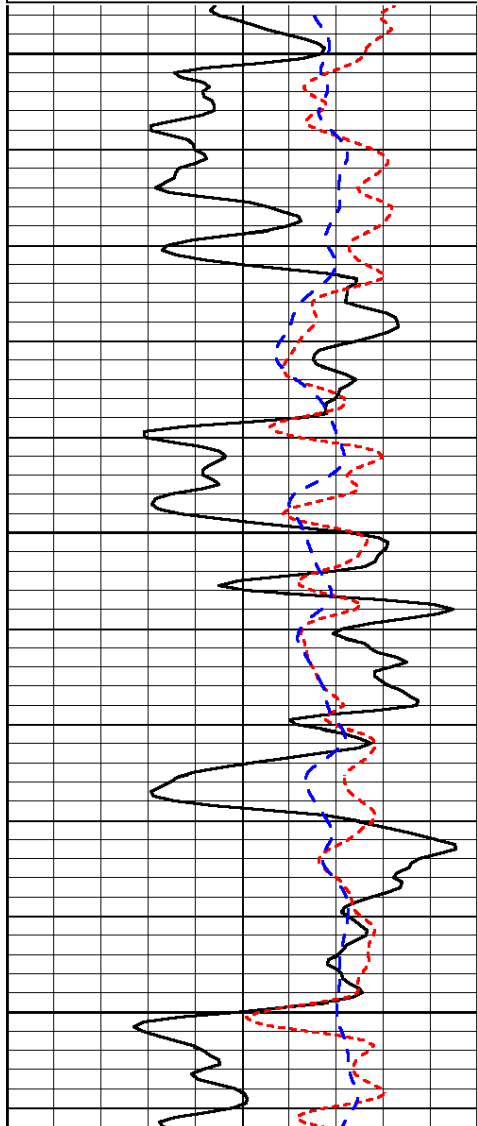


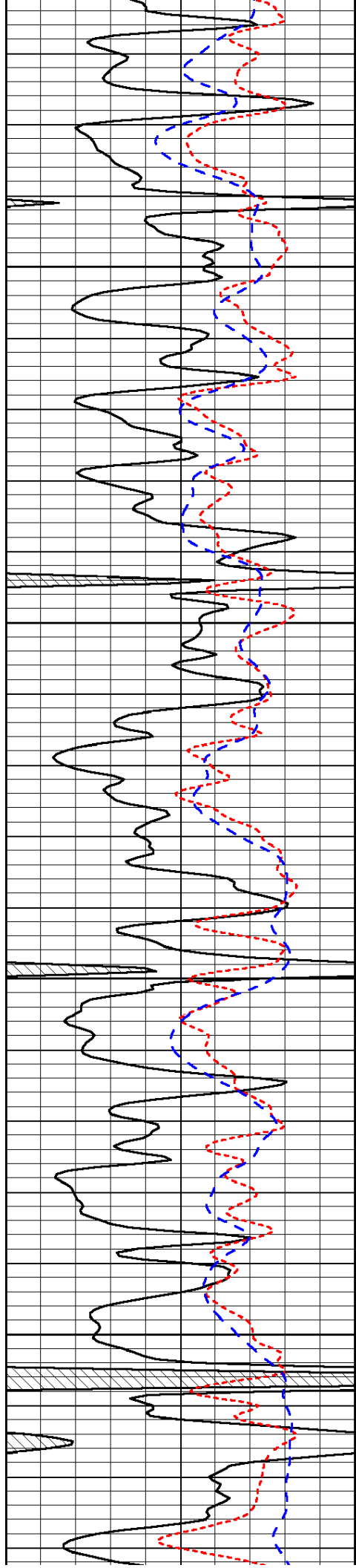
LSPD
(ft/min)

Database File: greatplains_hd.db
 Dataset Pathname: dil/gpmain
 Presentation Format: dil
 Dataset Creation: Thu Jul 18 17:39:28 2013
 Charted by: Depth in Feet scaled 1:240



LSPD
(ft/min)



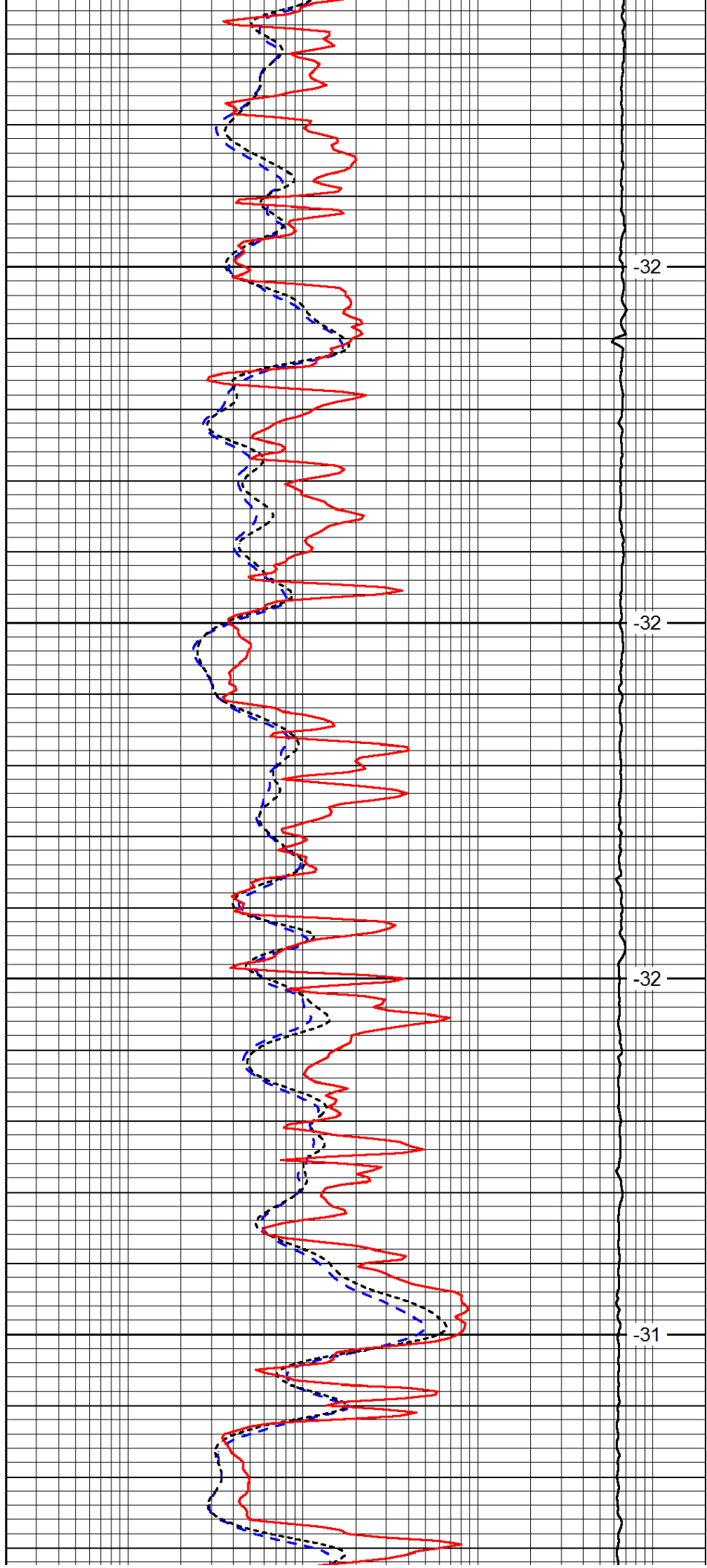


2950

3000

3050

3100

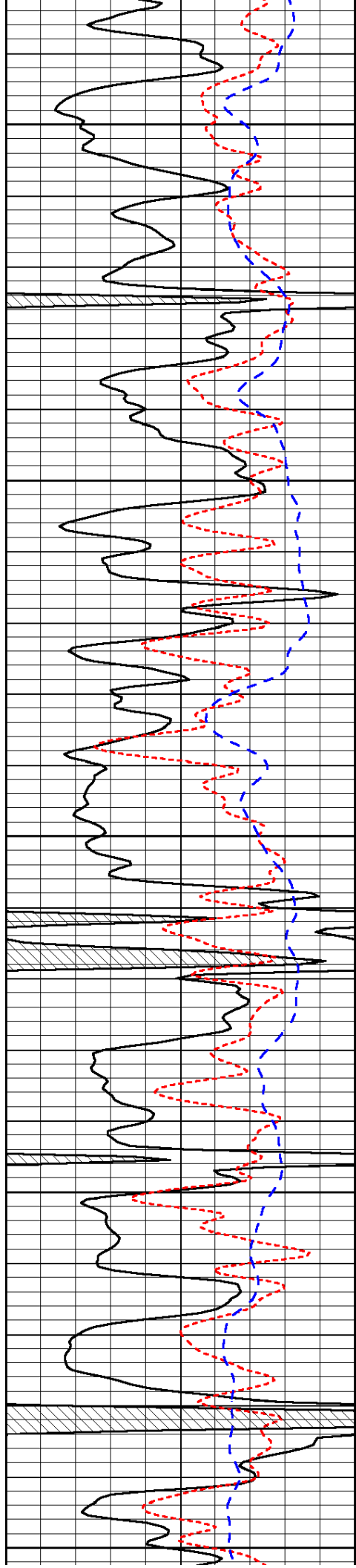


-32

-32

-32

-31



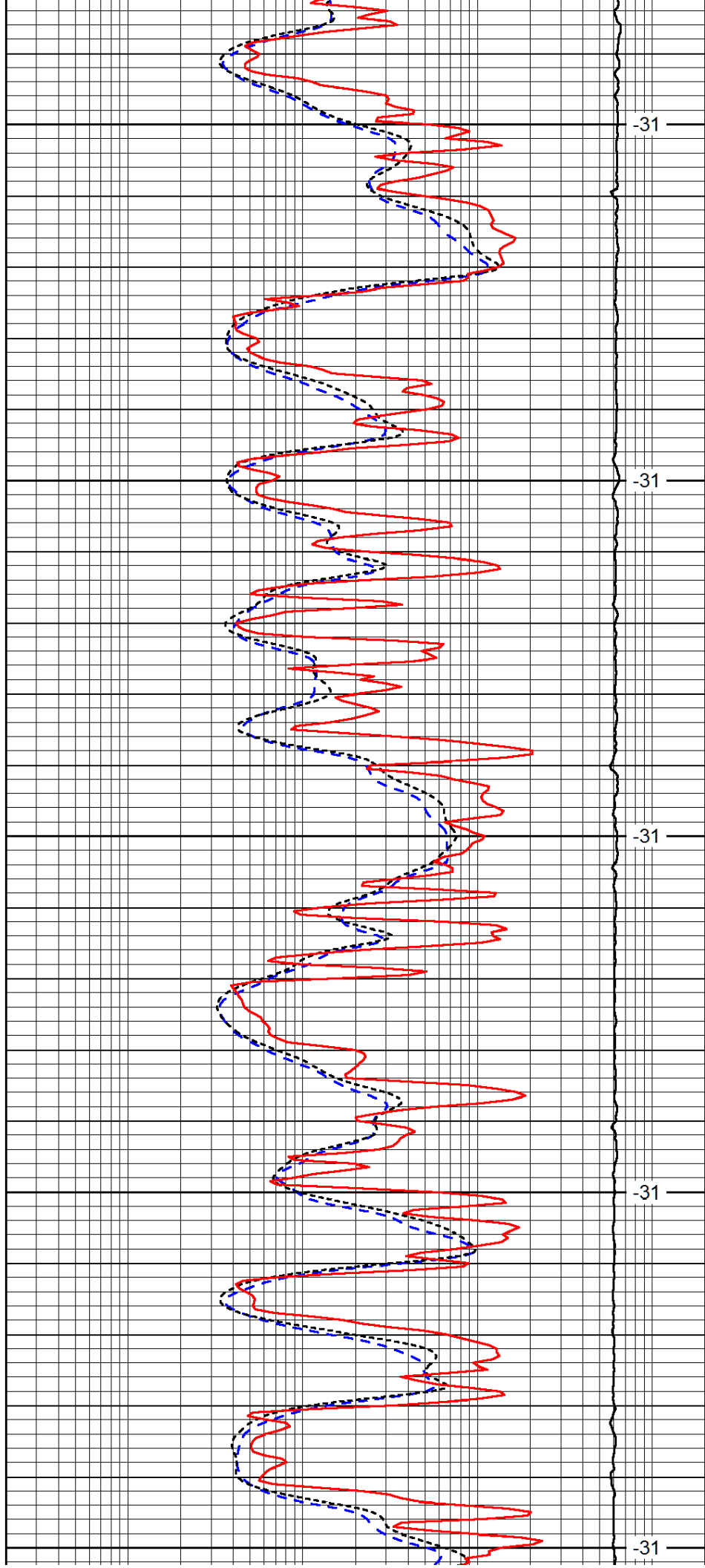
3150

3200

3250

3300

3350



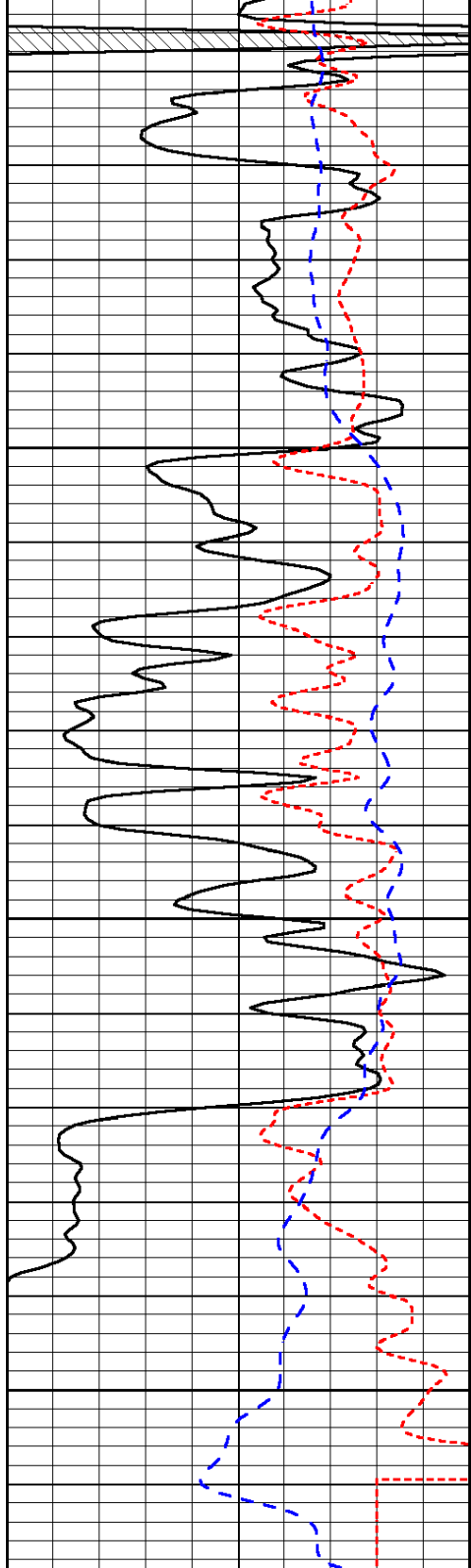
-31

-31

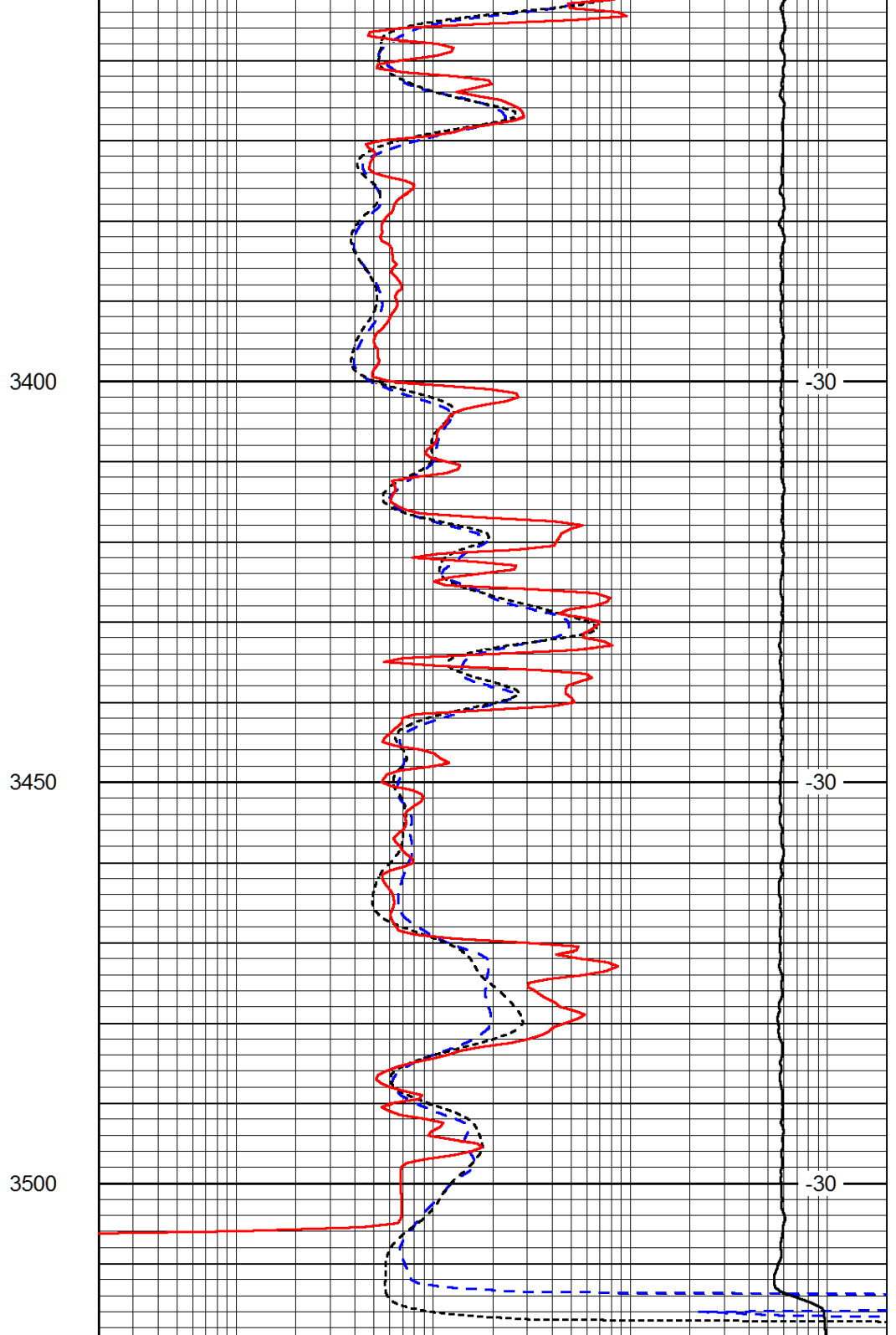
-31

-31

-31



0	Gamma Ray (GAPI)	150
-160	RXO/RT	40
-200	SP (mV)	0



0.2	Deep Resistivity (Ohm-m)	2000
0.2	Medium Resistivity (Ohm-m)	2000
0.2	Shallow Resistivity (Ohm-m)	2000
10000	Line Tension (lb)	0

LSPD
(ft/min)