



Pioneer Energy Services

Microresistivity Log

API No. 15-163-24132-00-00

Company: Great Plains Energy, Inc.
 Well: Odle #2-8
 Field: Wildcat
 County: Rooks State: Kansas

Location: NE SE SW SW
 335' FSL / 1100' FWL

Sec: 8 Twp: 7S Rge: 18W

Other Services: CNL/CDL DIL/BHCS

Permanent Datum	Ground Level	Elevation 1939	
Log Measured From	Kelly Bushing	5 Ft. Above Perm. Datum	K.B. 1944
Drilling Measured From	Kelly Bushing		D.F. 1939
Date	7/18/2013		G.L. 1939
Run Number	Two		
Depth Driller	3515		
Depth Logger	3514		
Bottom Logged Interval	3413		
Top Log Interval	2800		
Casing Driller	8.625 @ 220		
Casing Logger	224		
Bit Size	7.875		
Type Fluid in Hole	Chemical		
Salinity, ppm CL	2700		
Density / Viscosity	9.1 48		
pH / Fluid Loss	10.5 8.0		
Source of Sample	Flowline		
Rm @ Meas. Temp	0.42 @ 82		
Rmf @ Meas. Temp	0.32 @ 82		
Rmc @ Meas. Temp	0.57 @ 82		
Source of Rmf / Rmc	Charts		
Rm @ BHT	0.31 @ 111		
Operating Rig Time	4 Hours		
Max Rec. Temp. F	111		
Equipment Number	17		
Location	Hays		
Recorded By	R. Barnhart		
Witnessed By	Mike Madcharo		

<<< Fold Here >>>

All interpretations are opinions based on inferences from electrical or other measurements and we cannot and do not guarantee the accuracy or correctness of any interpretation, and we shall not, except in the case of gross or willful negligence on our part, be liable or responsible for any loss, costs, damages, or expenses incurred or sustained by anyone resulting from any interpretation made by any of our officers, agents or employees. These interpretations are also subject to our general terms and conditions set out in our current Price Schedule.

Comments

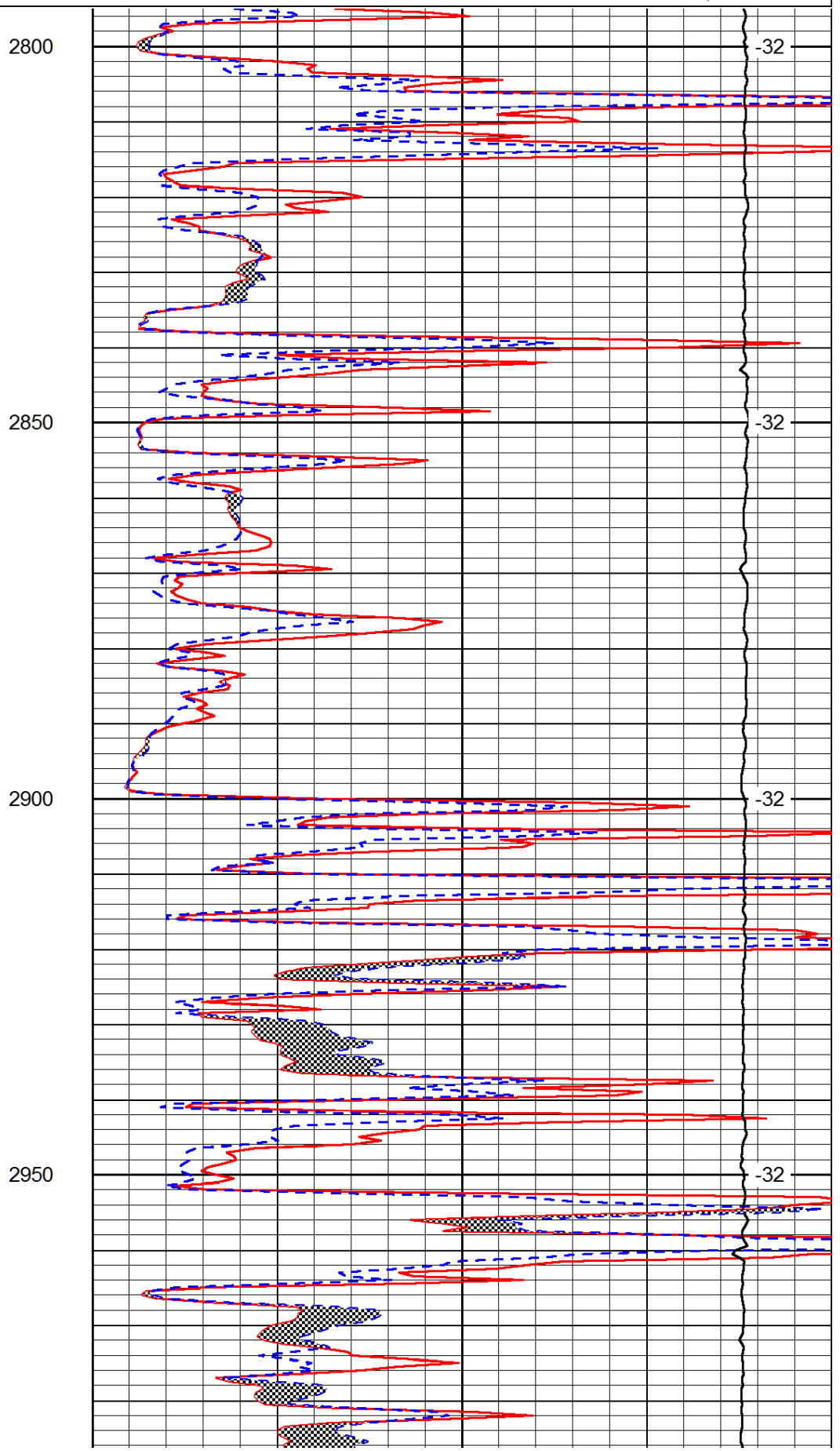
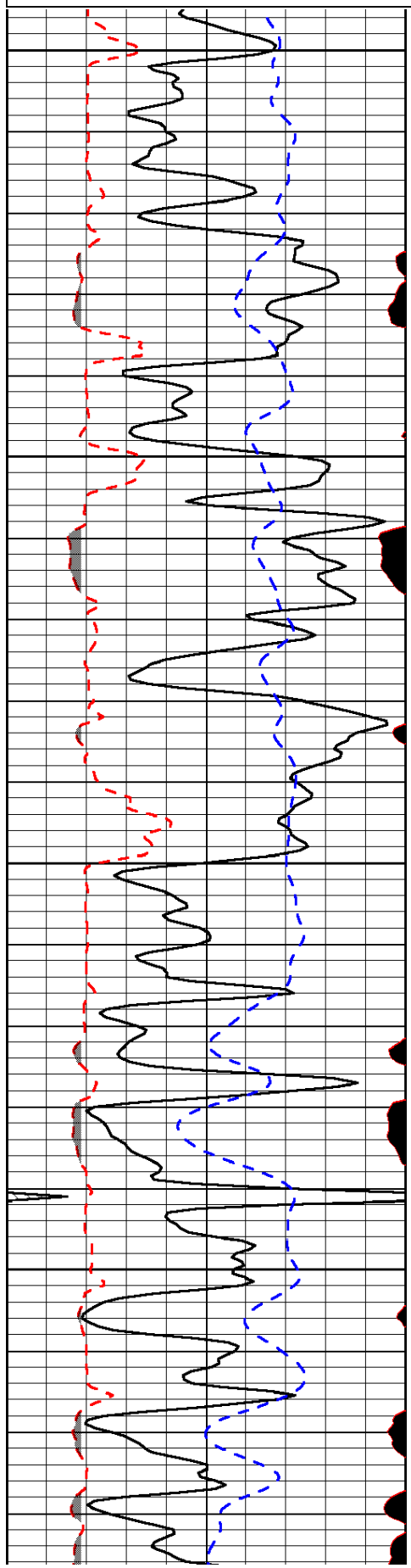
Thank you for using Log-Tech, Inc.
 (785) 625-3858

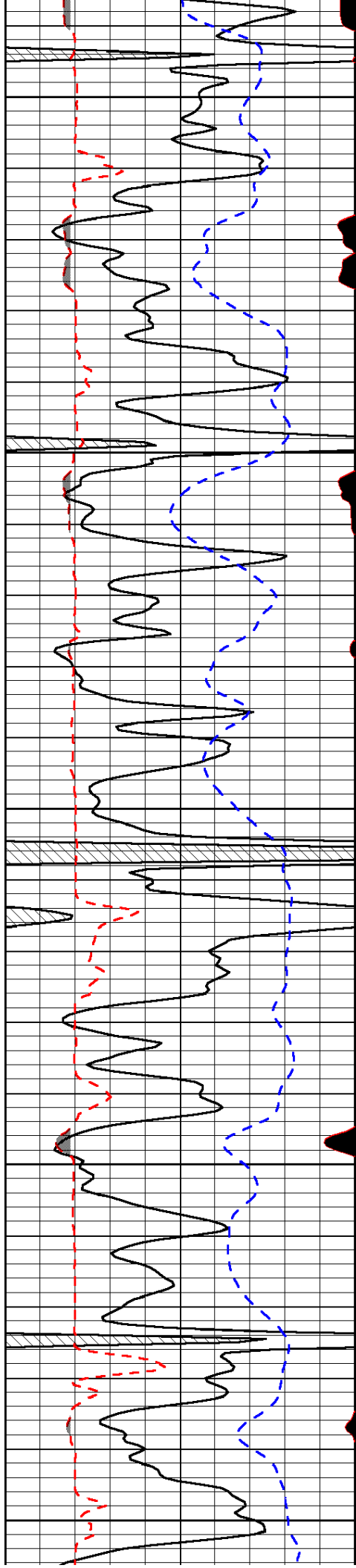
Stockton, KS:
 5W to 14 Rd., 2N thru CG, E into

0	Gamma Ray (GAPI)	150
6	MCAL (in)	16
2.875	Mud Cake (in)	7.875
-200	SP (mV)	0

0	Micro Inverse 1 X 1 (Ohm-m)	40
0	Micro Normal 2" (Ohm-m)	40
10000	Line Weight (lb)	0

LSPD
(ft/min)





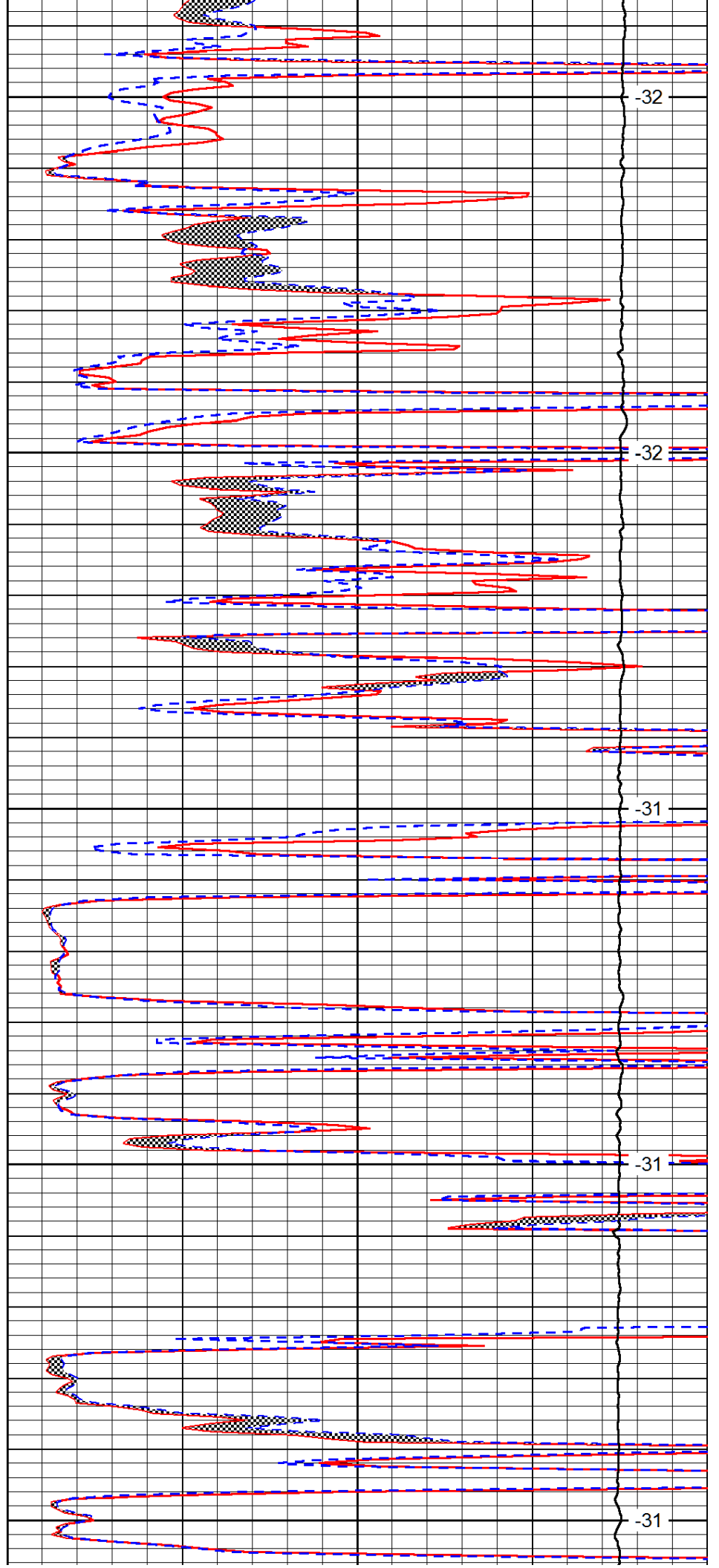
3000

3050

3100

3150

3200



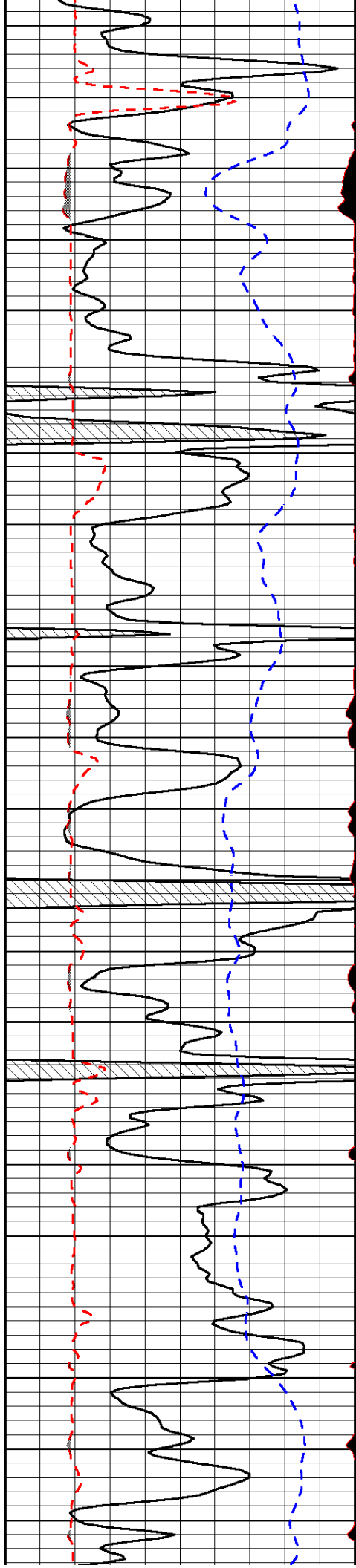
-32

-32

-31

-31

-31

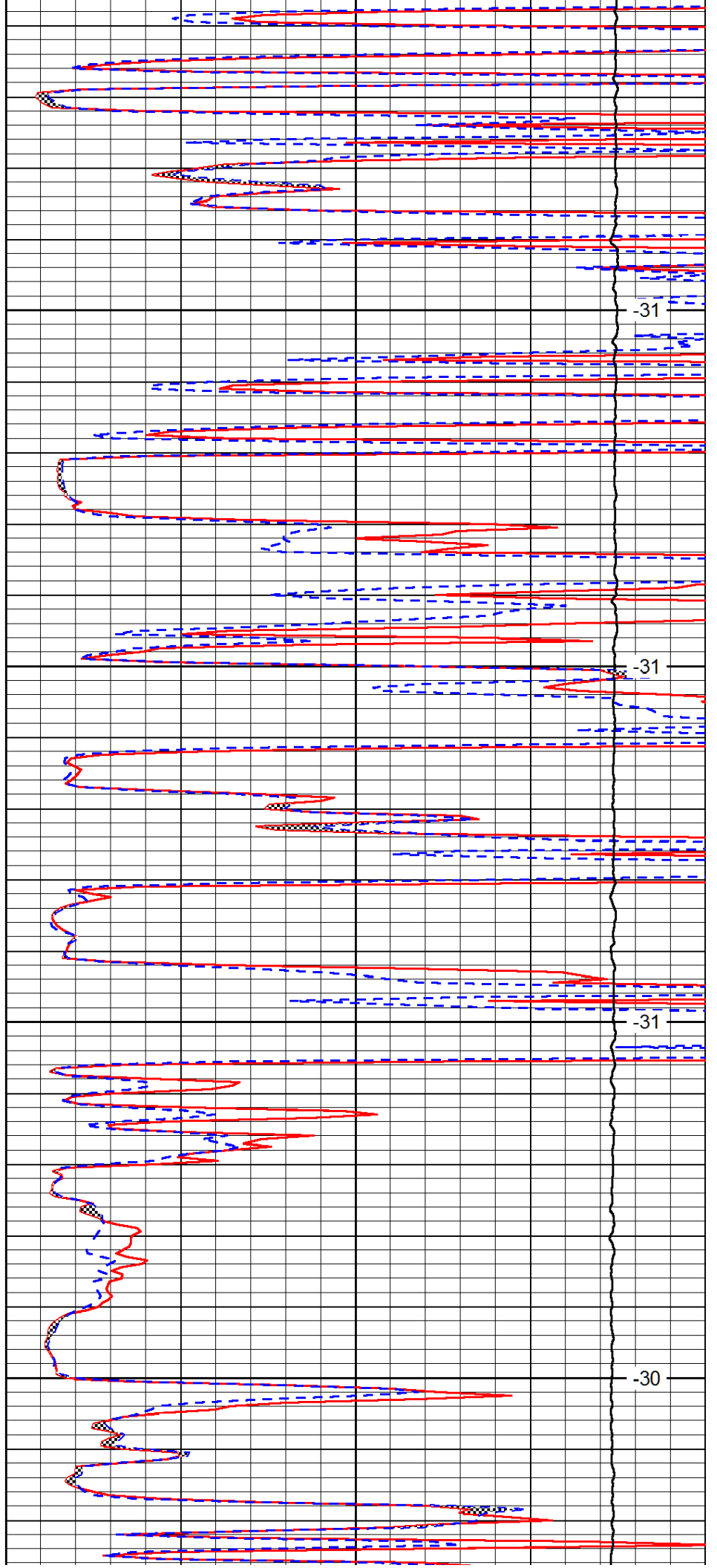


3250

3300

3350

3400

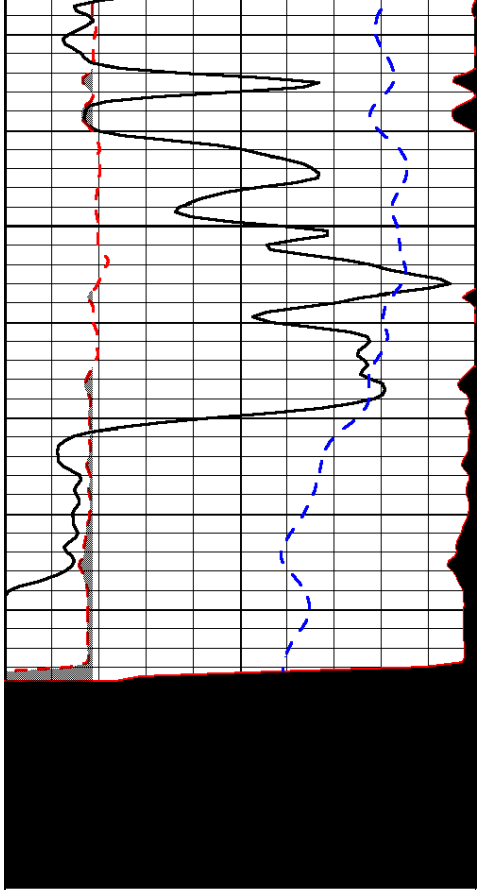


-31

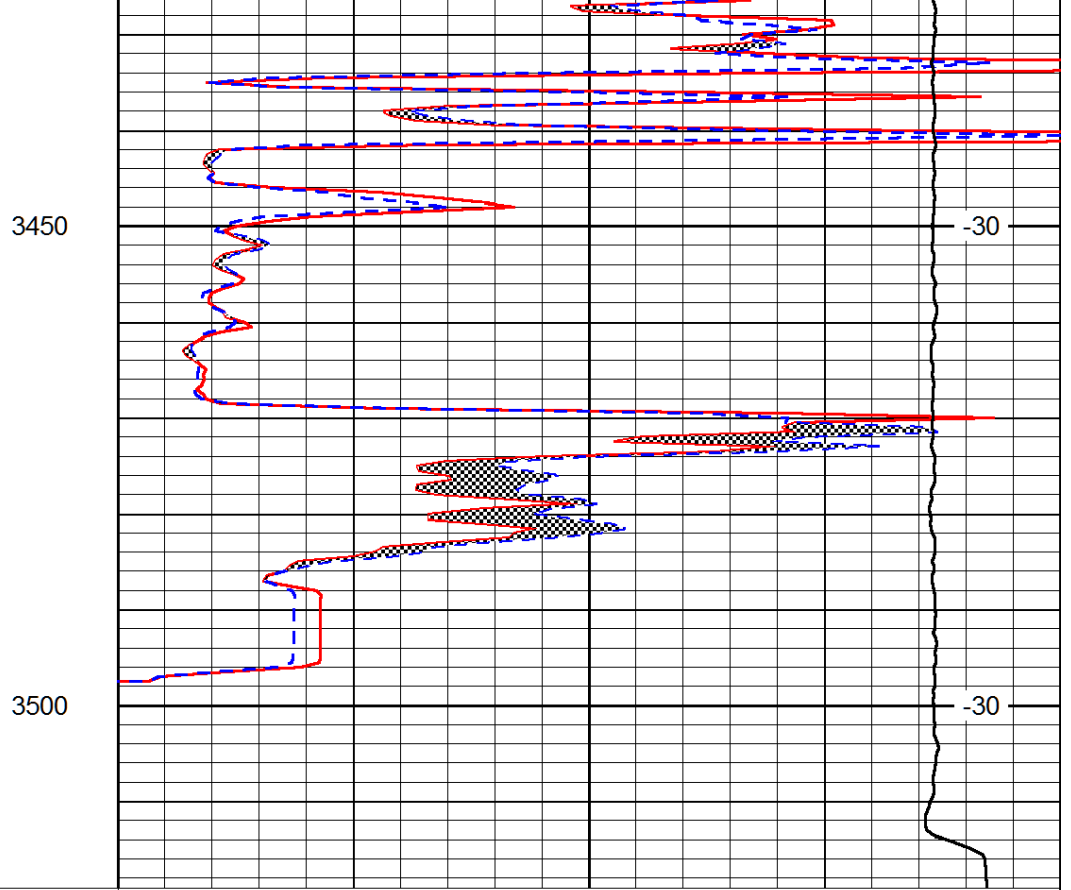
-31

-31

-30



0	Gamma Ray (GAPI)	150
6	MCAL (in)	16
2.875	Mud Cake (in)	7.875
-200	SP (mV)	0



0	Micro Inverse 1 X 1 (Ohm-m)	40
0	Micro Normal 2" (Ohm-m)	40
10000	Line Weight (lb)	0

LSPD (ft/min)
