



Pioneer Energy Services

Microresistivity Log

15-051-26,533-00-00

API No.

Company **TDI, Inc.**
 Well **Rossie # 1**
 Field **Unnamed**
 County **Eljis** State **Kansas**

Location **S2-N2-NW-SE
 2010' FSL & 1980' FEL**

Sec: **18** Twp: **12S** Rge: **18W**

Other Services
 CNL/CDL
 DIL

Permanent Datum **Ground Level** Elevation **2203**
 Log Measured From **Kelly Bushing** 10 Ft. Above Perm. Datum
 Drilling Measured From **Kelly Bushing**

Elevation
 K.B. 2213
 D.F. 2203
 G.L. 2203

Date	7/10/2013	
Run Number	Two	
Depth Driller	3939	
Depth Logger	3944	
Bottom Logged Interval	3943	
Top Log Interval	3100	
Casing Driller	8.625 @ 222	
Casing Logger	218	
Bit Size	7.875	
Type Fluid in Hole	Chemical	
Salinity, ppm CL	1,400	
Density / Viscosity	9.2 61	
pH / Fluid Loss	10.5 6.8	
Source of Sample	Flowline	
Rm @ Meas. Temp	.50 @ 90	
Rmf @ Meas. Temp	.38 @ 90	
Rmc @ Meas. Temp	.68 @ 90	
Source of Rmf / Rmc	Charts	
Rm @ BHT	.39 @ 115	
Operating Rig Time	4 Hours	
Max Rec. Temp. F	115	
Equipment Number	15	
Location	Hays	
Recorded By	J. Hennickson	T. Martin
Witnessed By	Herb Deines	Tom Denning

<<< Fold Here >>>

All interpretations are opinions based on inferences from electrical or other measurements and we cannot and do not guarantee the accuracy or correctness of any interpretation, and we shall not, except in the case of gross or willful negligence on our part, be liable or responsible for any loss, costs, damages, or expenses incurred or sustained by anyone resulting from any interpretation made by any of our officers, agents or employees. These interpretations are also subject to our general terms and conditions set out in our current Price Schedule.

Comments

Thank you for using Pioneer Energy Services
www.pioneerres.com
 785 625 3858

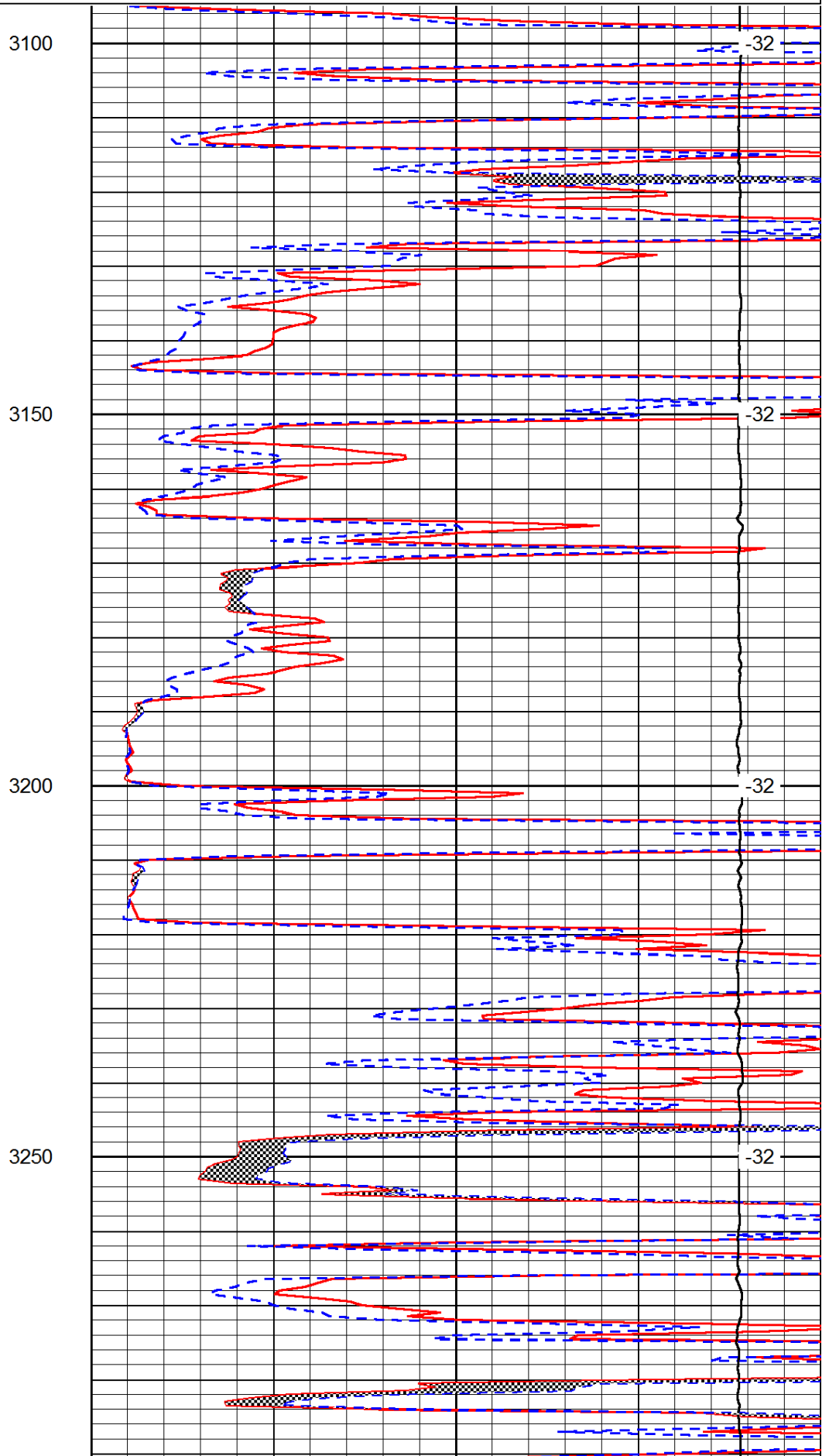
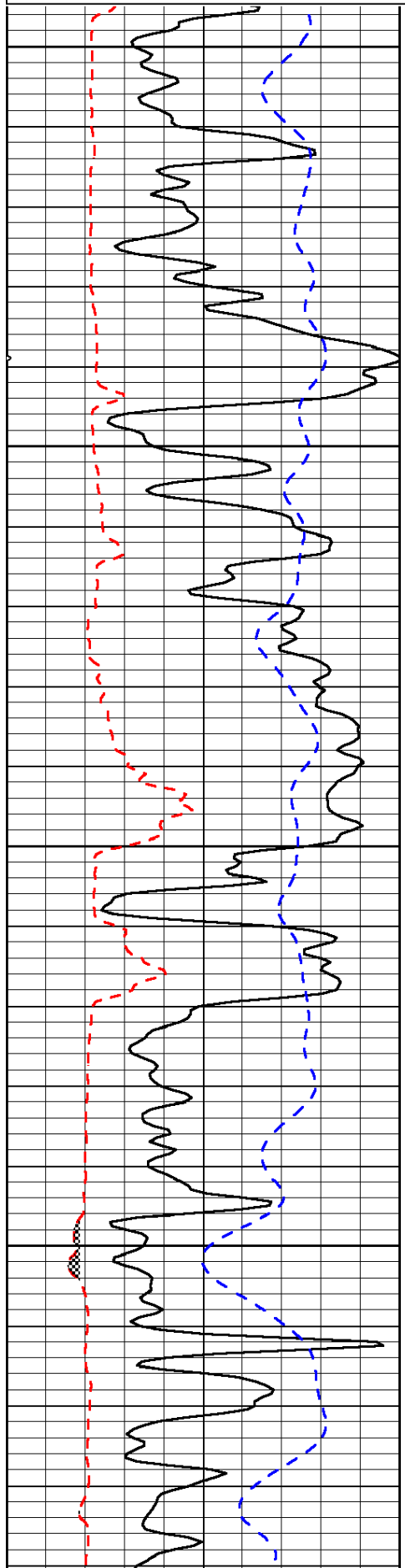
Hays Kansas
 North to Buckeye Rd, 2 West, 1/4 North, West Into

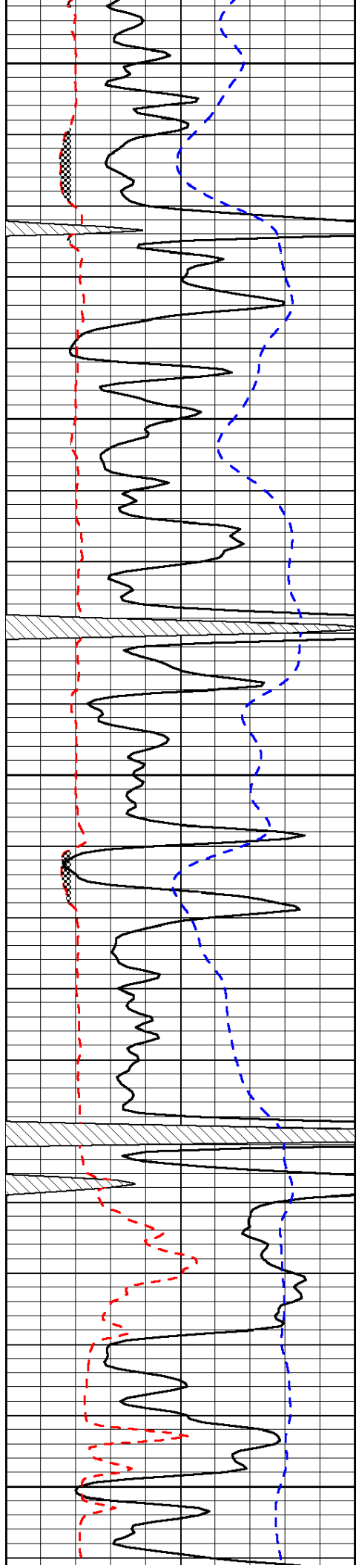
Database File: c:\warrior\data\tdi_rossie #1\tdi_rossie_1hd.db
 Dataset Pathname: DIL\tdistk
 Presentation Format: micro
 Dataset Creation: Wed Jul 10 22:53:41 2013
 Charted by: Depth in Feet scaled 1:240

0	Gamma Ray	150
6	Micro Log Caliper (GAPI)	16
-200	SP (mV)	0

0	Micro Inverse 1 X 1	40
0	Micro Normal 2"	40
15000	Line Weight	0

LSPD





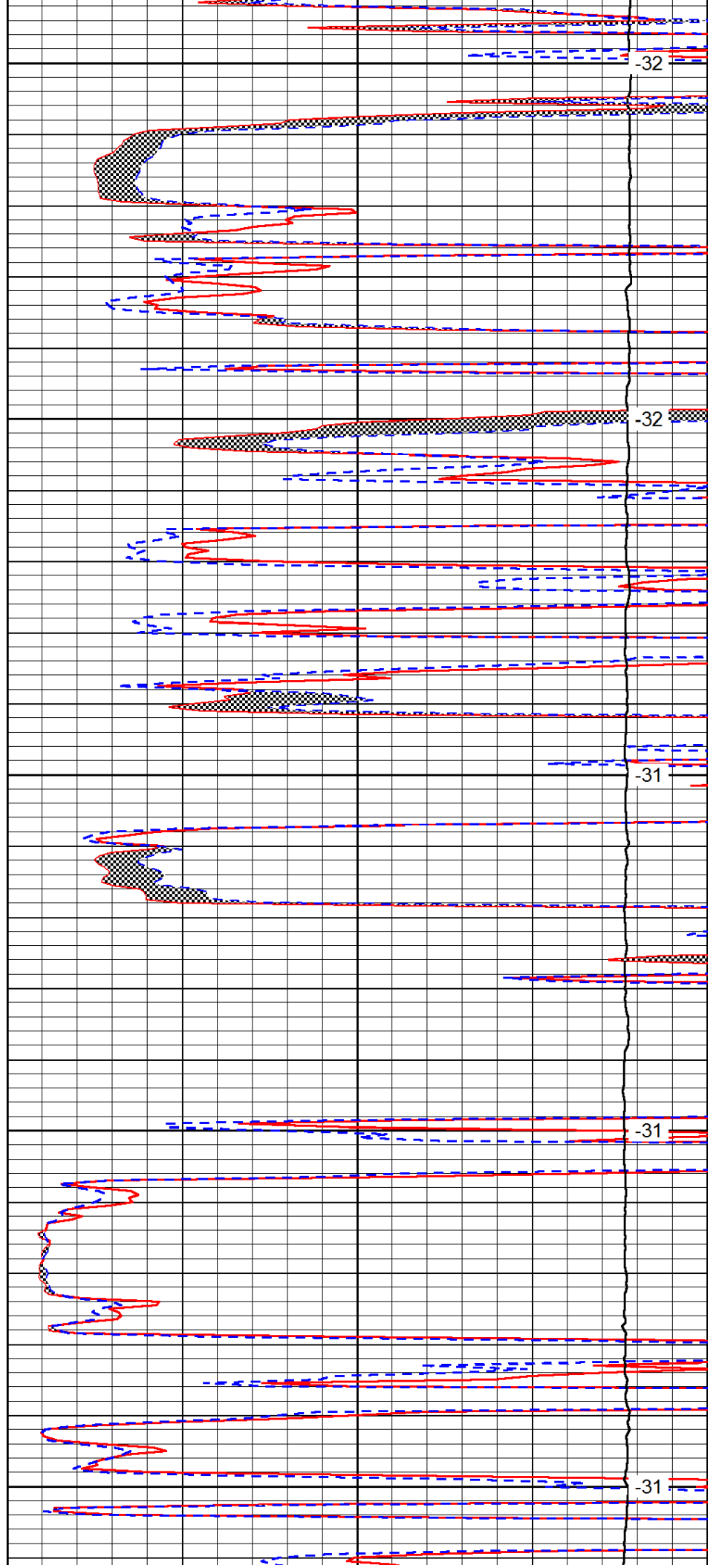
3300

3350

3400

3450

3500



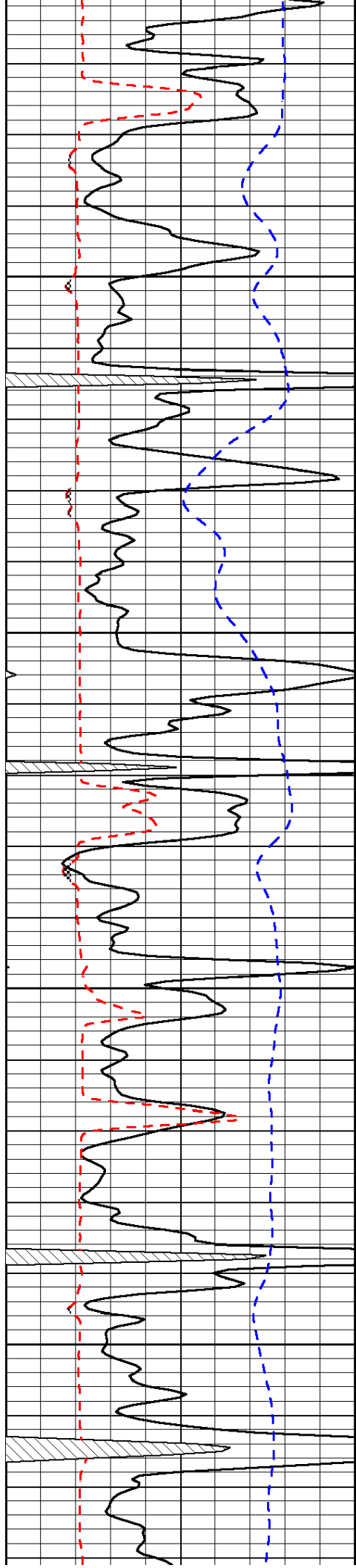
-32

-32

-31

-31

-31

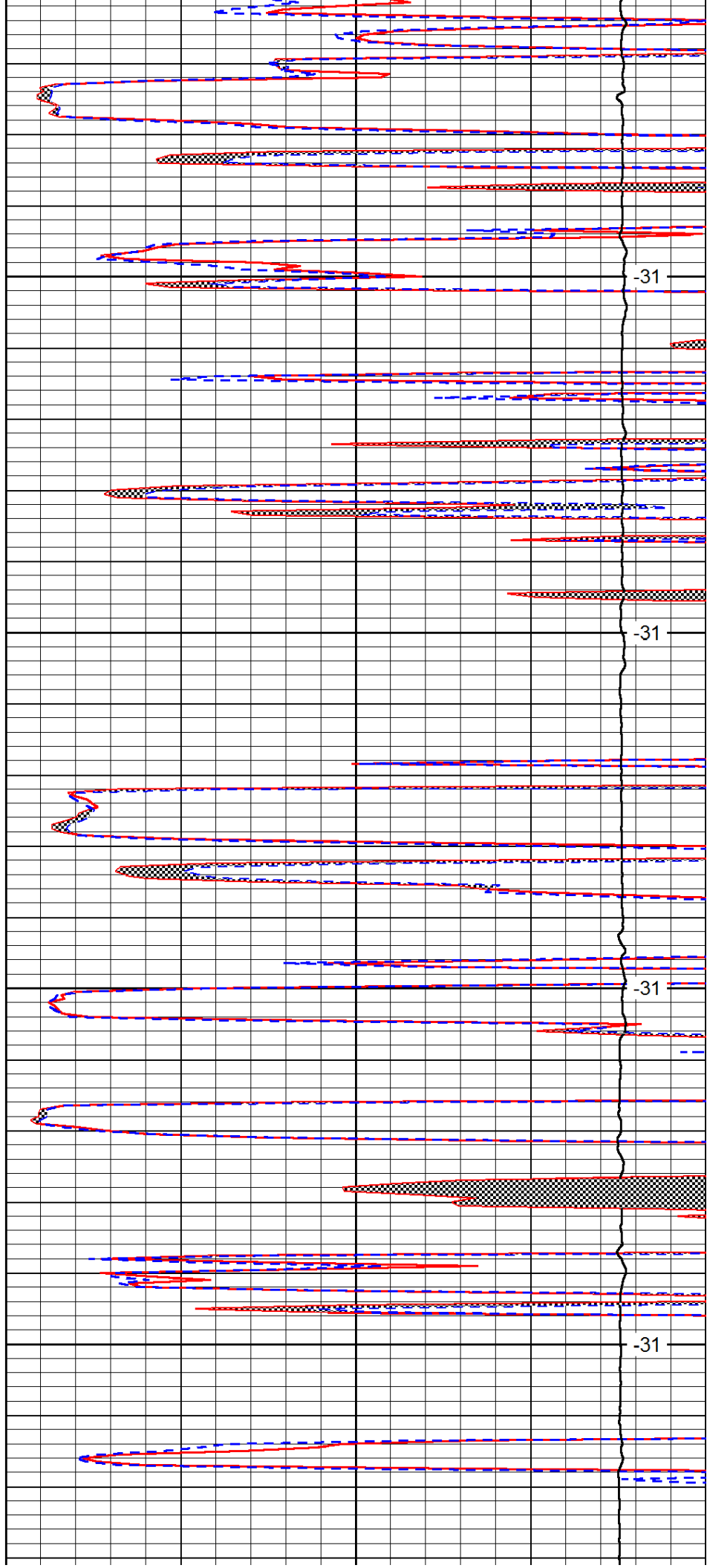


3550

3600

3650

3700

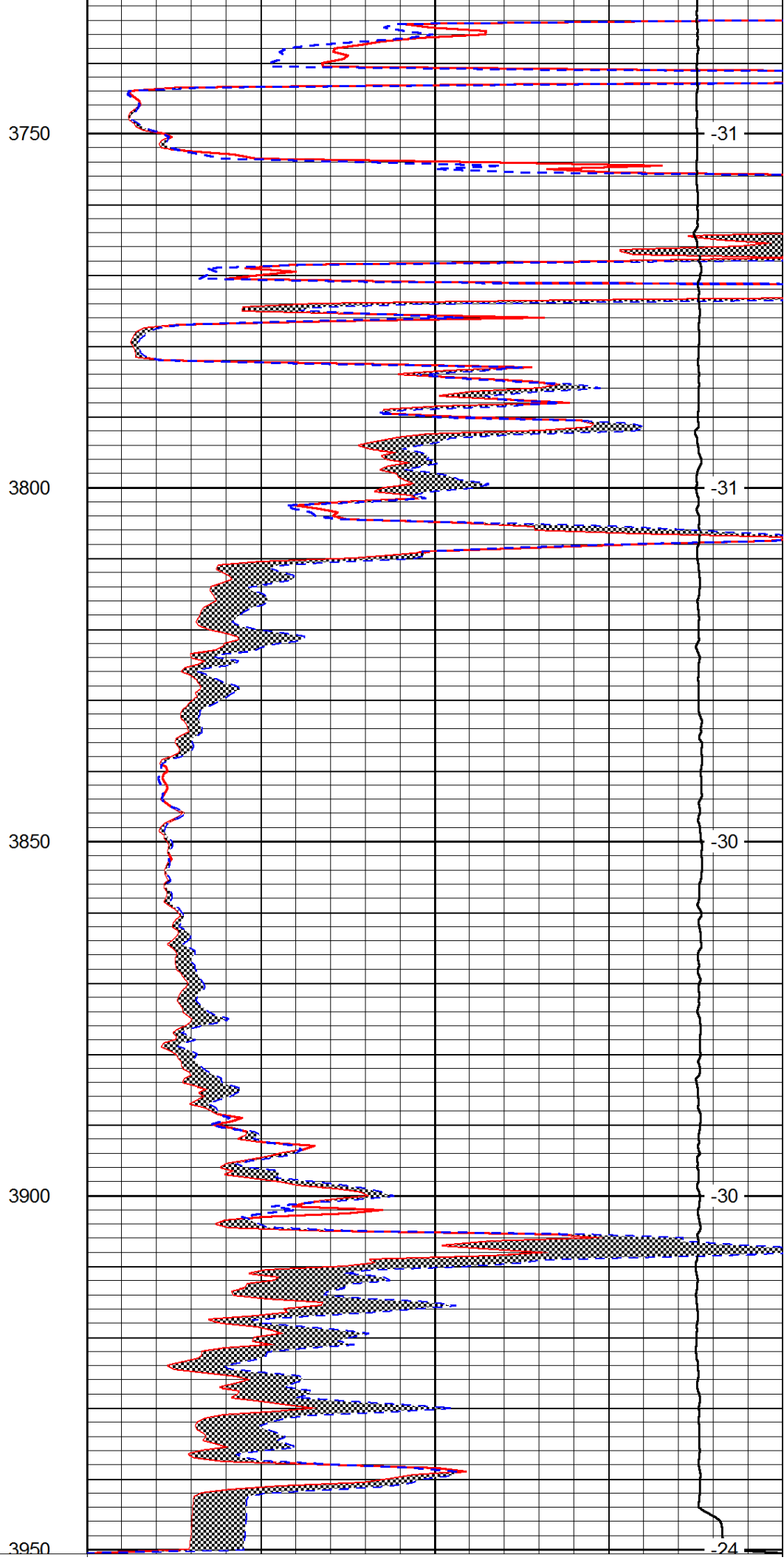
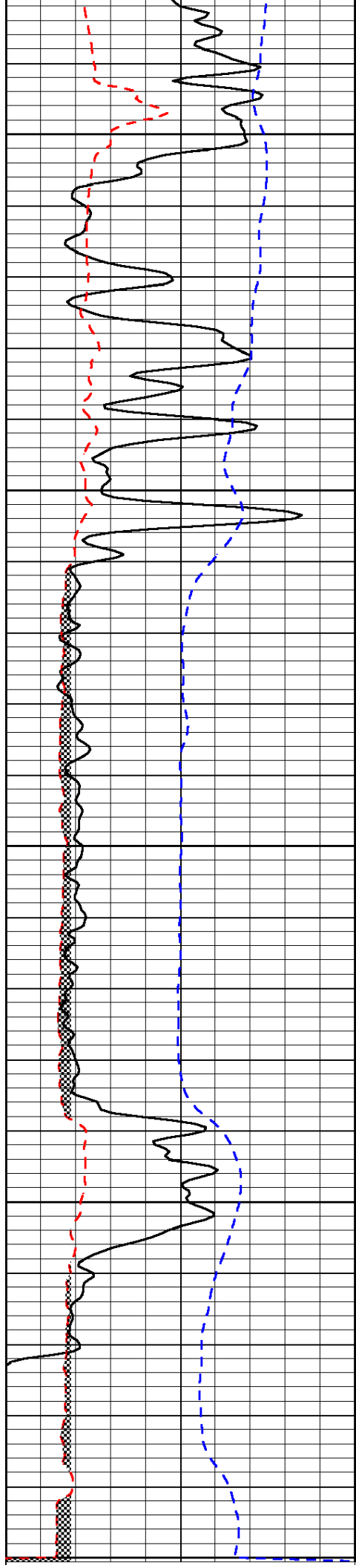


-31

-31

-31

-31



0	Gamma Ray	150
6	Micro Log Caliper (GAPI)	16
-200	SP (mV)	0

0	Micro Inverse 1 X 1	40
0	Micro Normal 2"	40
15000	Line Weight	0

LSPD