



**CEMENT
BOND
LOG**

Company Charles N. Griffin
 Well Karon Cunningham #1
 Field Eby East
 County Barber
 State Kansas

Company Charles N. Griffin
 Well Karon Cunningham #1
 Field Eby East
 County Barber State Kansas

Location: API #: 15-007-24118
 330' FNL & 900' FEL
 SEC 15 TWP 32S RGE 12W
 Permanent Datum Ground Level Elevation 1549'
 Log Measured From KB 10' AGL
 Drilling Measured From KB
 Other Services
 Elevation
 K.B. 1559'
 D.F. 1558'
 G.L. 1549'

Date	01-08-14			
Run Number	One			
Depth Driller	4830'			
Depth Logger	4612'			
Bottom Logged Interval	4611'			
Top Log Interval	2850'			
Open Hole Size	7 7/8"			
Type Fluid	Water			
Density / Viscosity	////			
Max. Recorded Temp.	////			
Estimated Cement Top	2990'			
Time Well Ready	8:00 AM			
Time Logger on Bottom	10:00 AM			
Equipment Number	T-440			
Location	Hays, KS			
Recorded By	Justin LaBarge	Casey Patterson		
Witnessed By	J.R. Griffin			
Borehole Record		Tubing Record		
Run Number	Bit	From	To	Size
				Weight
				From
				To
Casing Record	Size	Wgt/Ft	Top	Bottom
Surface String				
Prot. String				
Production String				
Liner				

<<< Fold Here >>>

All interpretations are opinions based on inferences from electrical or other measurements and we cannot and do not guarantee the accuracy or correctness of any interpretation, and we shall not, except in the case of gross or willful negligence on our part, be liable or responsible for any loss, costs, damages, or expenses incurred or sustained by anyone resulting from any interpretation made by any of our officers, agents or employees. These interpretations are also subject to our general terms and conditions set out in our current Price Schedule.

Comments

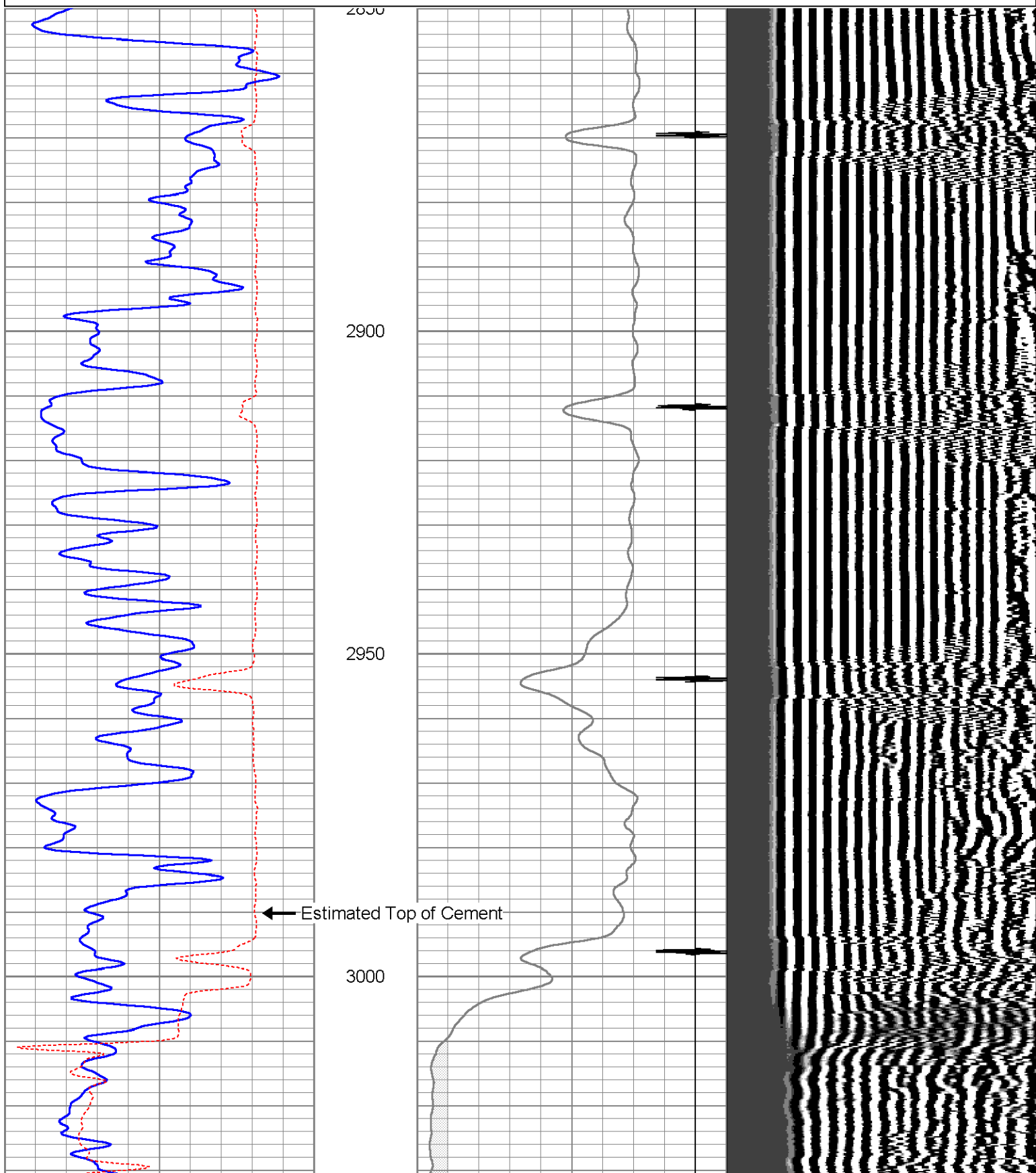
Past Caseys General Store, West 1.5 Miles, South Till Top Of Hill, West Into
 Thank You For Using Gemini Wireline

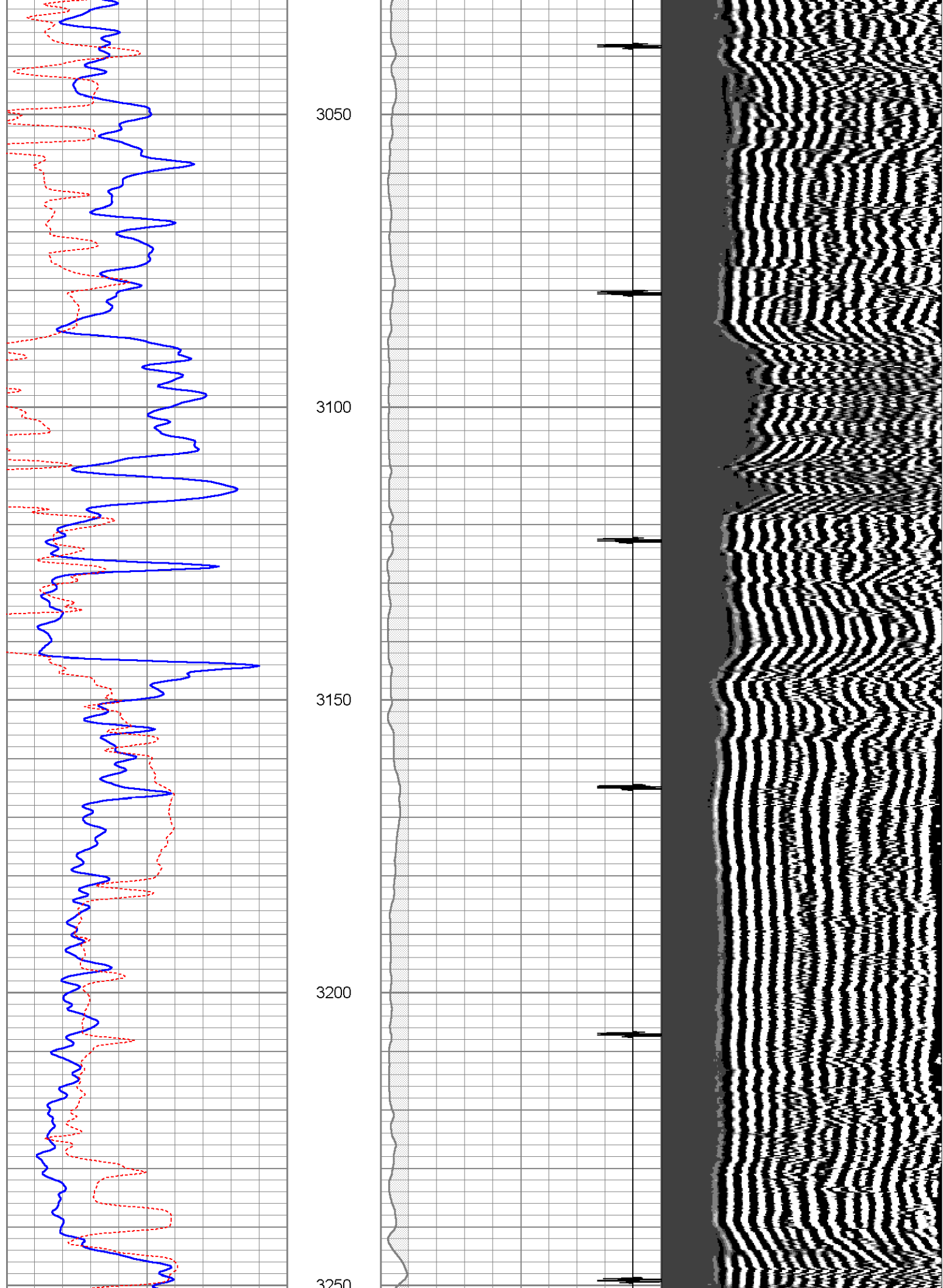


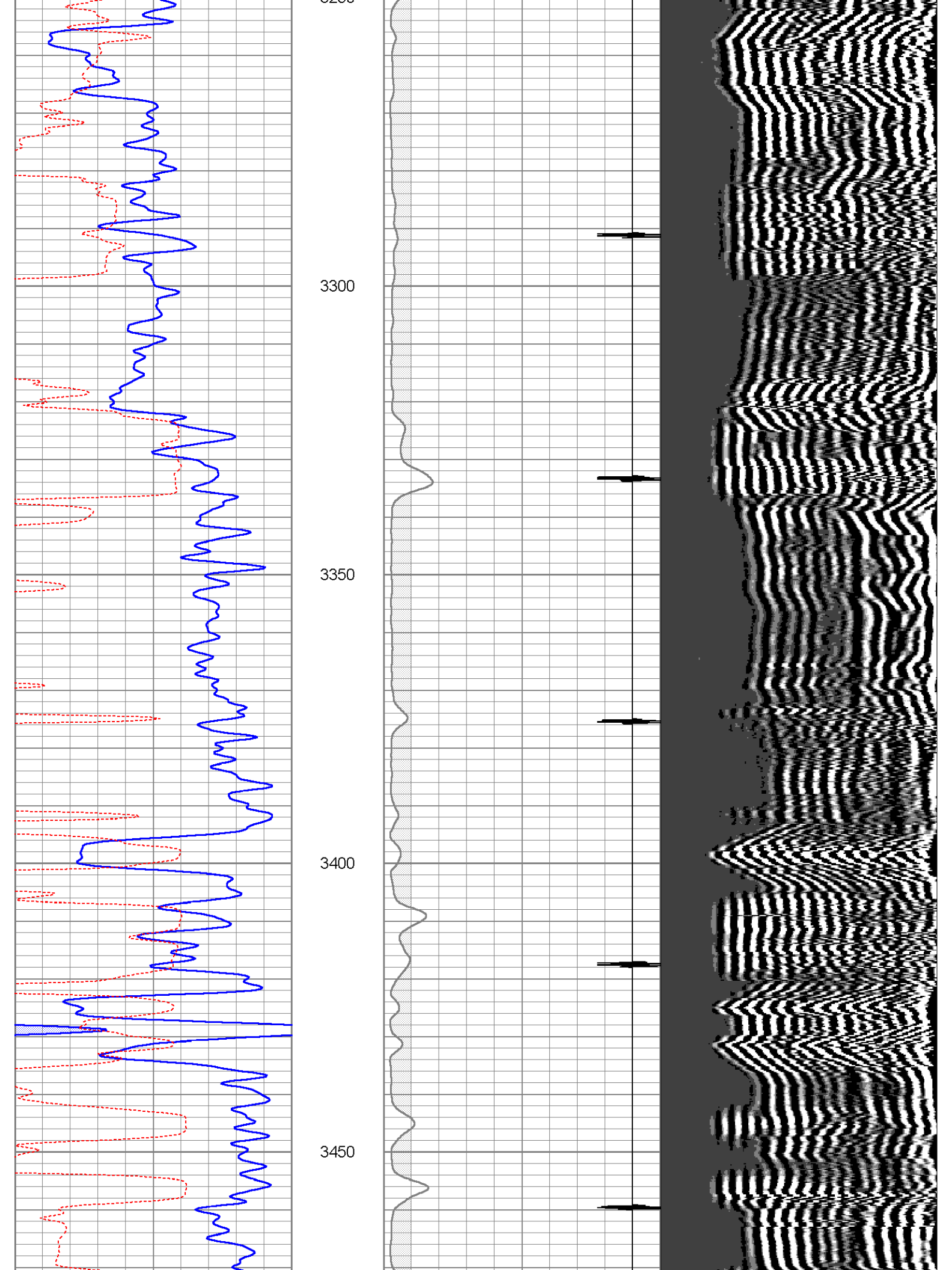
Main Pass

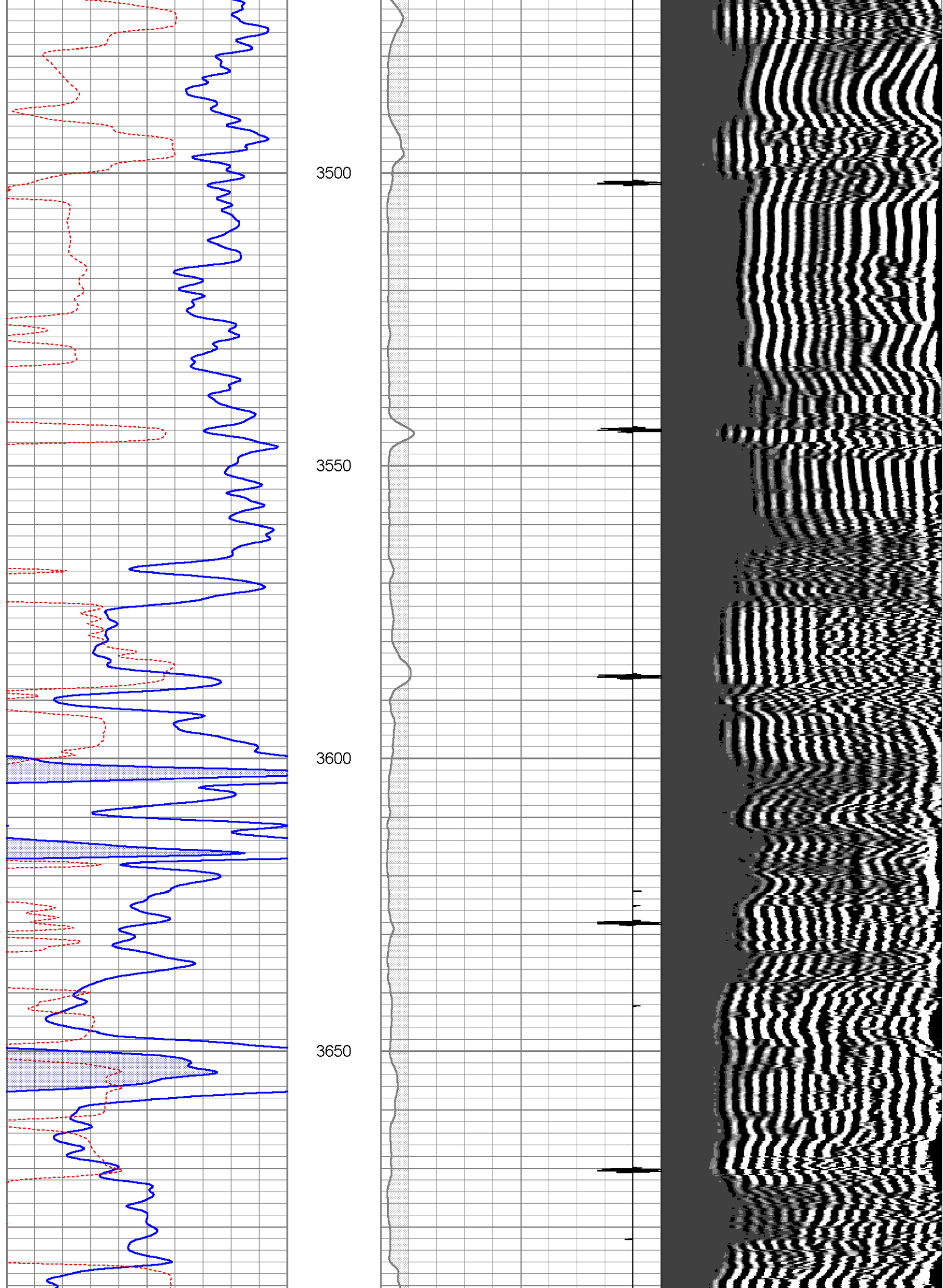
Database File: cgkaroncunningham#1cbl.db
 Dataset Pathname: pass3.1
 Presentation Format: cbl
 Dataset Creation: Wed Jan 08 10:55:01 2014 by Calc Open-Case 071220
 Charted by: Depth in Feet scaled 1:240

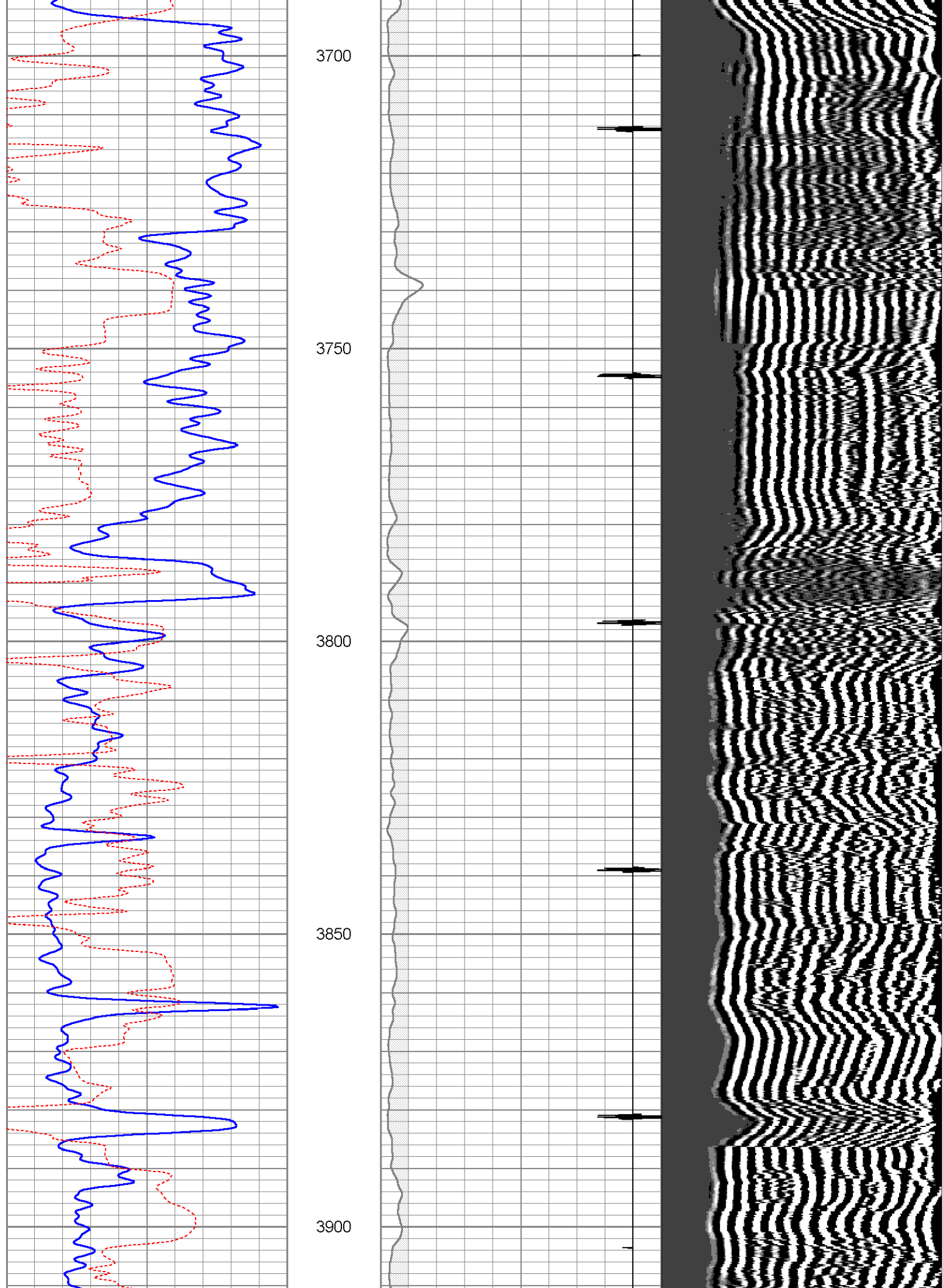
0	GR (GAPI)	150	18	CCL	-2	200	VDL	1200
150	GR (GAPI)	300	0	AMP3 (mV)	100			
420	TT3FT (usec)	220						

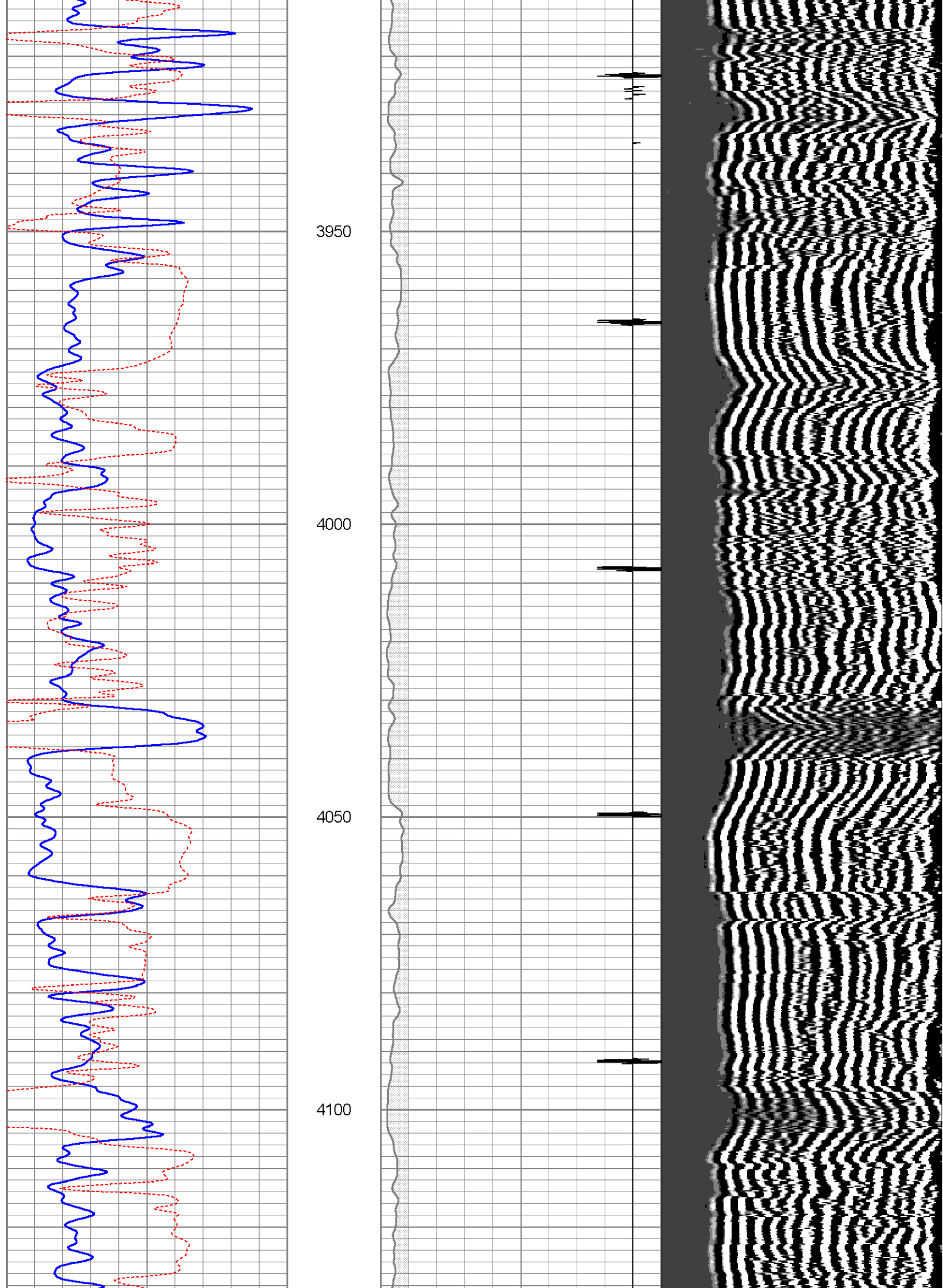


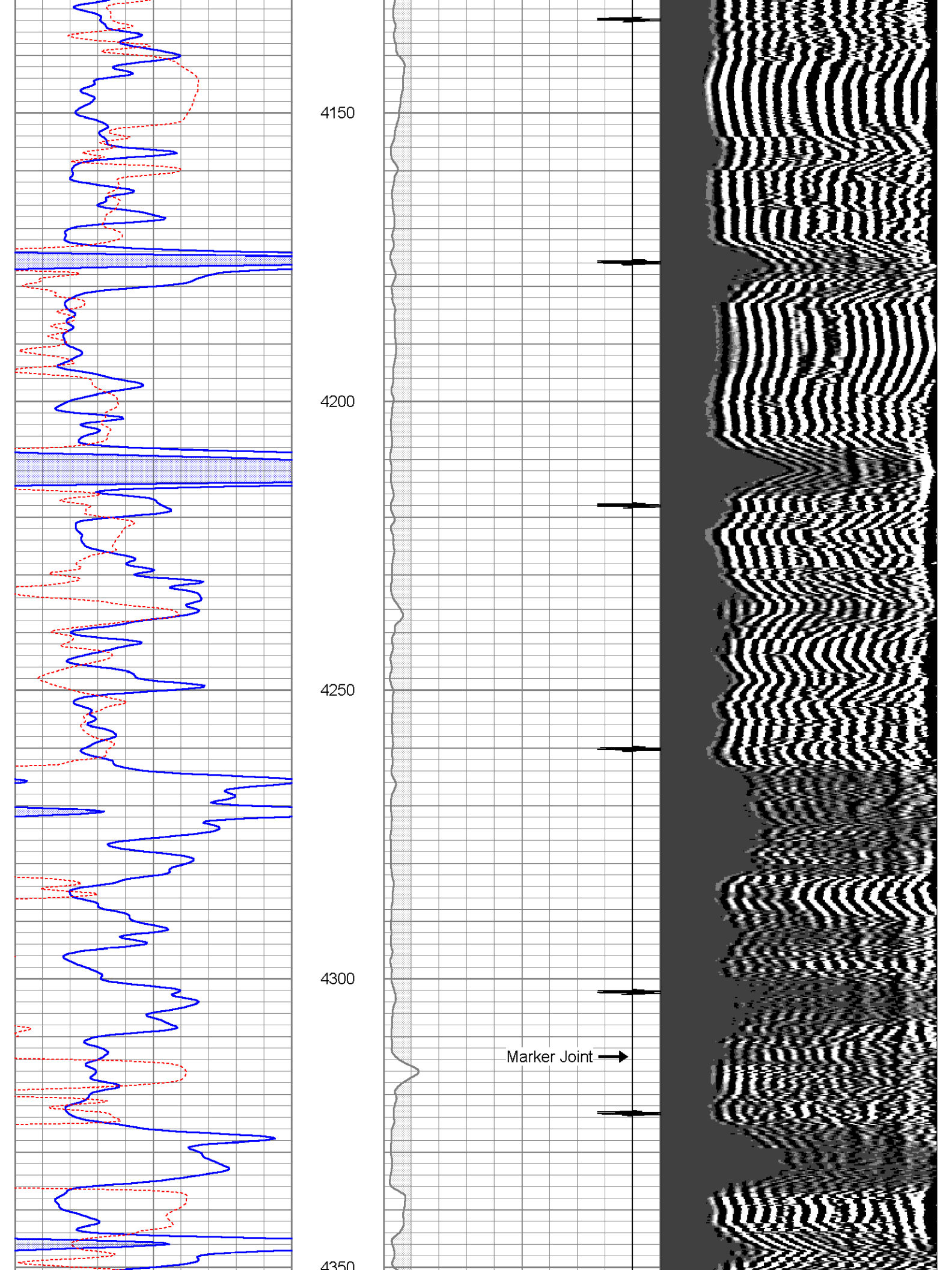


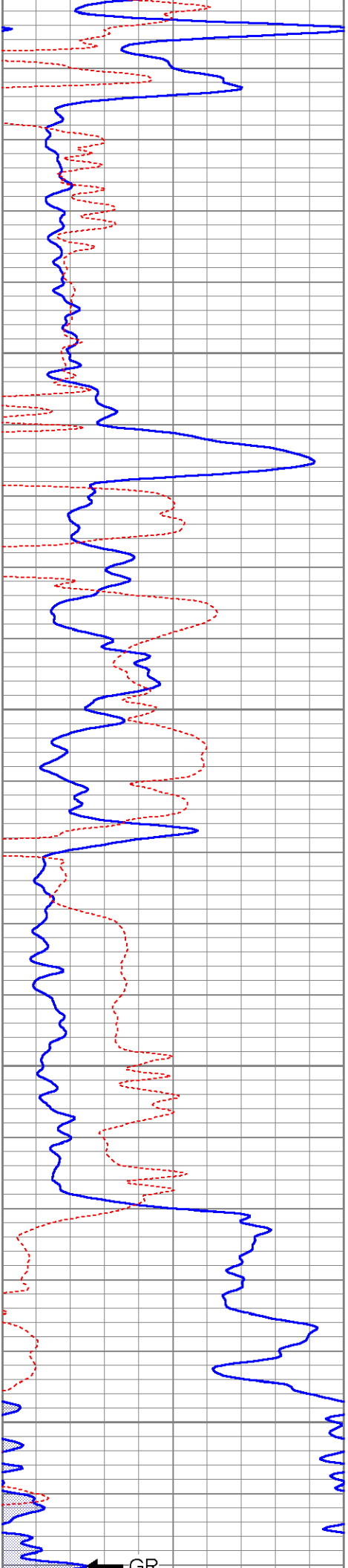










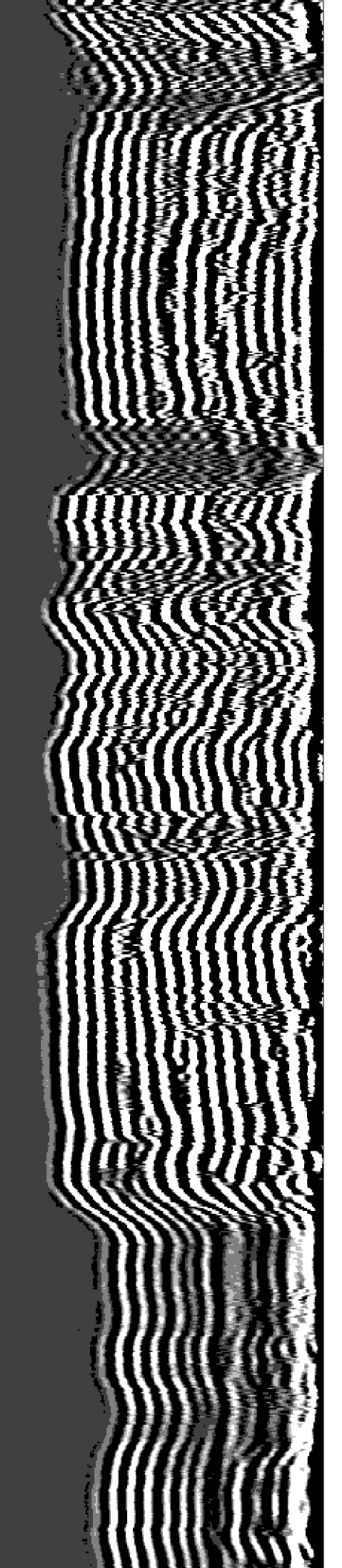
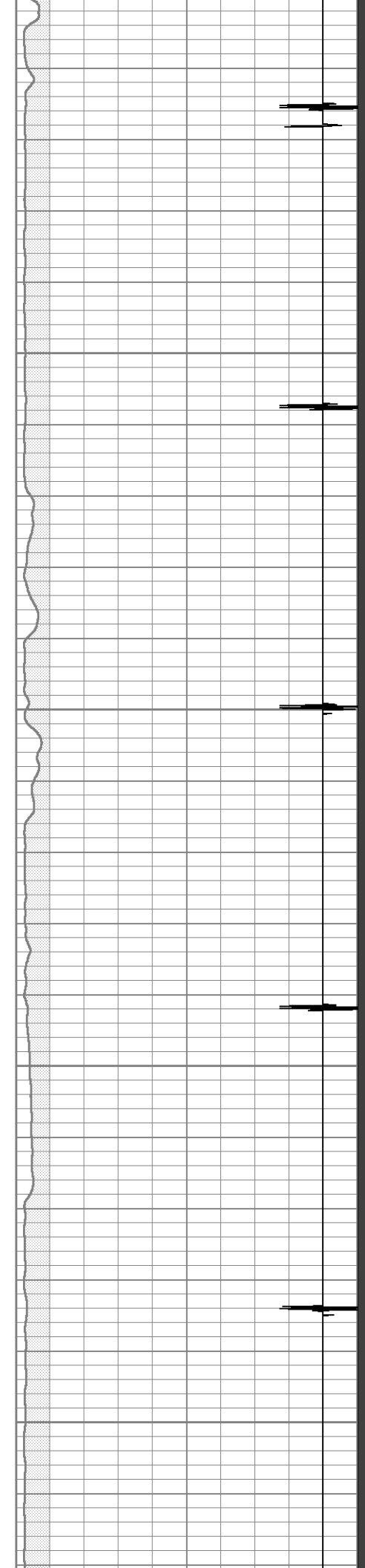


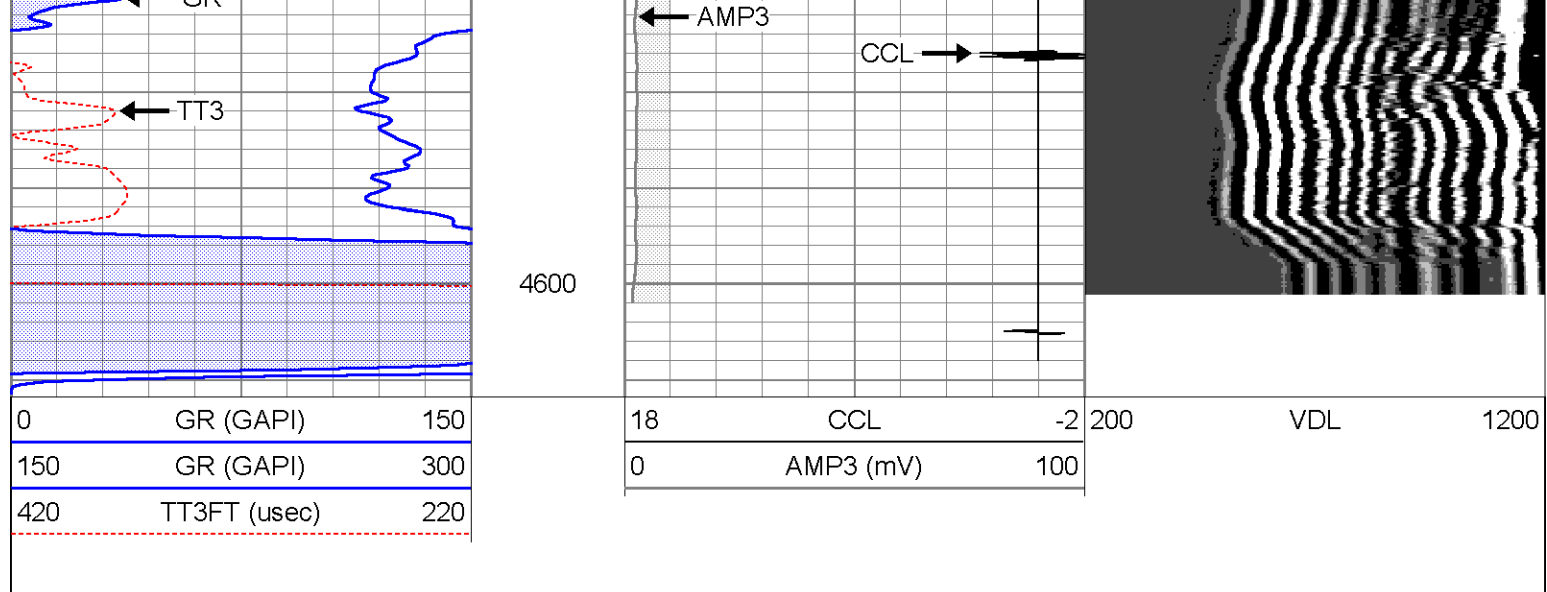
4400

4450

4500

4550

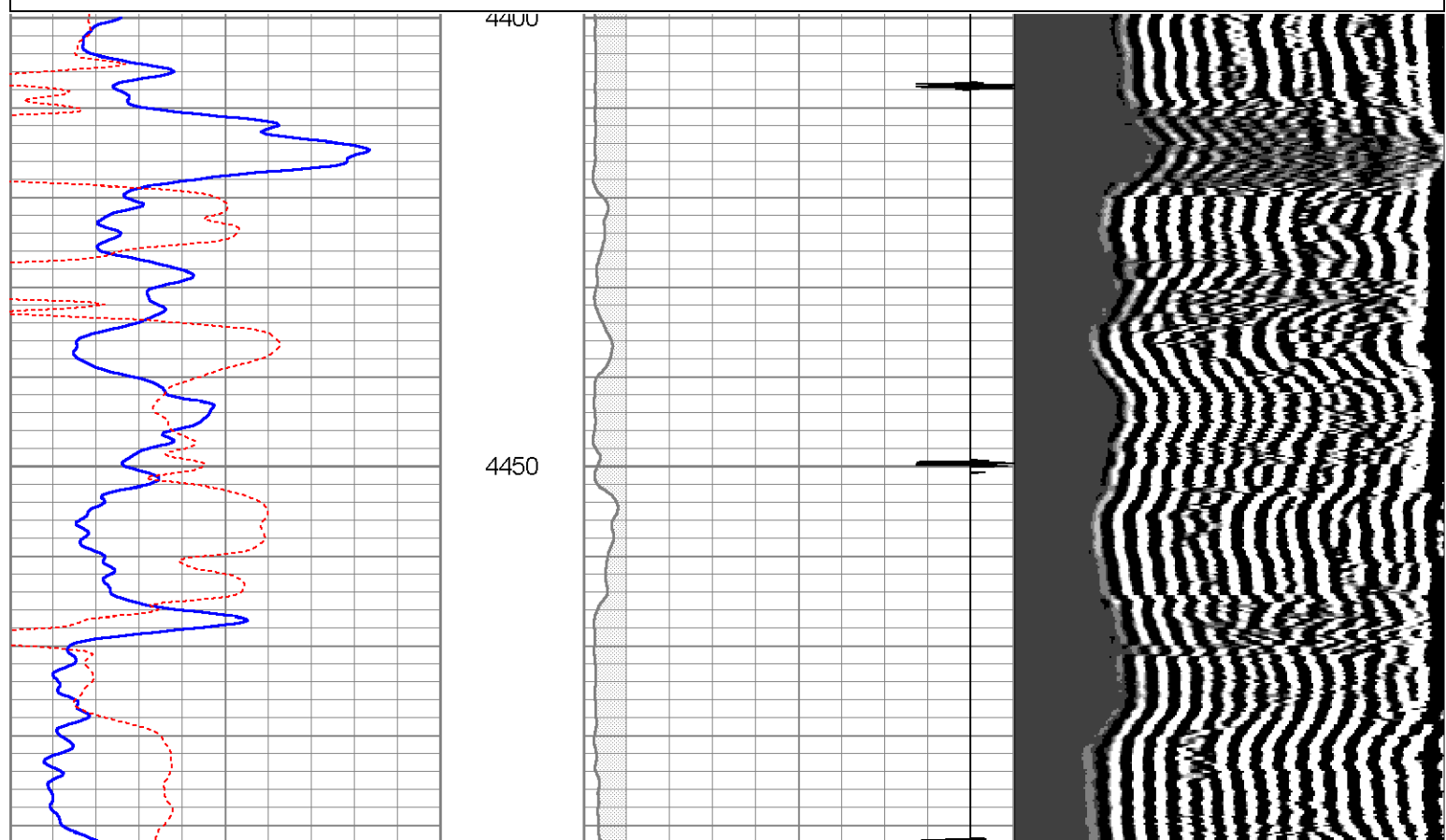


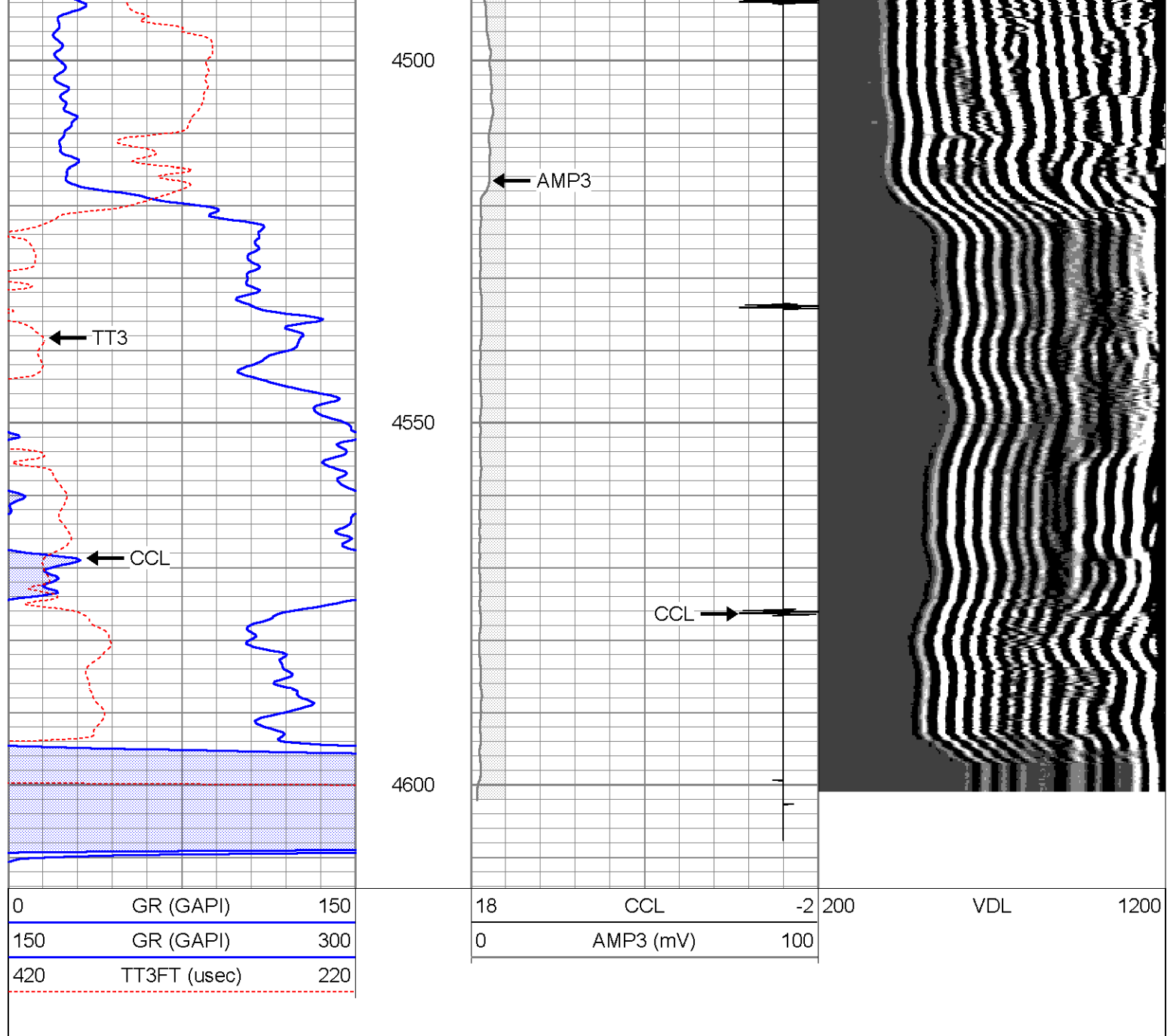


Repeat Section

Database File: cgkaroncunningham#1cbl.db
 Dataset Pathname: pass2
 Presentation Format: cbl
 Dataset Creation: Wed Jan 08 10:09:30 2014 by Log Open-Cased 071220
 Charted by: Depth in Feet scaled 1:240

0	GR (GAPI)	150	18	CCL	-2	200	VDL	1200
150	GR (GAPI)	300	0	AMP3 (mV)	100			
420	TT3FT (usec)	220						





Calibration Report

Database File: cgkaroncunningham#1cbl.db
 Dataset Pathname: pass3.1
 Dataset Creation: Wed Jan 08 10:55:01 2014 by Calc Open-Cased 071220

Gamma Ray Calibration Report

Serial Number: 080224
 Tool Model: Probe1
 Performed: Thu Sep 27 07:34:48 2012

Calibrator Value: 200.0 GAPI
 Background Reading: 15.0 cps
 Calibrator Reading: 222.7 cps

Sensitivity: 0.9629 GAPI/cps

Cement Bond Log Calibration Report

Serial Number: 080024
 Tool Model: DigitalCBL

Tool Model:
Performed:

DigitalCBL
Sat Dec 14 09:16:23 2013

Depth: 2603.51 ft
Casing Diameter: 5.5 in

3' Spacing 5' Spacing

Signal Zero: 2 0 mV
Calibrated Amplitude: 71.921 71.921 mV
Reading at Signal Zero: 0.0029541 0.00244141 V
Reading in Free Pipe: 0.91 1.21655 V

Gain: 77.0865 59.2376
Offset: 1.77228 -0.144623

Sensor	Offset (ft)	Schematic	Description	Len (ft)	OD (in)	Wt (lb)
			275 2 3/4" Centralizer	2.94	2.75	10.00
WVF3	11.69		Probedig-DigitalCBL (080024) 2 3/4 Bond Tool	8.77	2.75	92.00
WVF5	10.69					
			275 2 3/4" Centralizer	2.94	2.75	10.00
CCL	3.67		CCL-Probe (080224)	1.42	2.75	20.00
GR	2.30	GR-Probe1 (080224)	3.08	2.75	40.00	

Dataset: cgkaroncunningham#1cbl.db: field/well/run1/pass3.1
Total Length: 19.14 ft
Total Weight: 172.00 lb
O.D. 2.75 in